

Respiratory Virus Detections in Canada

Respiratory Virus Report, Week 10 - ending March 9, 2019

The Respiratory Virus Detection Surveillance System collects data from select laboratories across Canada on the number of tests performed and the number of tests positive for influenza and other respiratory viruses. Data are reported on a weekly basis year-round to the Centre for Immunization and Respiratory Infectious Diseases (CIRID), Public Health Agency of Canada. These data are also summarized in the weekly FluWatch report.

Table 1: Respiratory Virus Detections/Isolations for the week ending March 9, 2019 (Reporting Week 201910)

Reporting Laboratory	Flu Tested	A(H1N1)pdm09 Positive	A(H3) Positive	A(UnS) Positive	Total Flu A Positive	Total Flu B Positive	RSV Tested	RSV Positive	PIV Tested	PIV 1 Positive	PIV 2 Positive	PIV 3 Positive	PIV 4 Positive	Other PIV Positive	Adeno Tested	Adeno Positive	hMPV Tested	hMPV Positive	Entero/Rhino Tested	Entero/Rhino Positive	Coron Tested	Coron Positive
Newfoundland	212	0	0	55	55	0	212	34	212	0	5	10	0	0	212	3	212	3	212	3	N.A.	N.A.
Prince Edward Island	53	11	5	0	16	0	53	23	1	0	0	0	0	0	1	0	1	0	1	0	1	0
Nova Scotia	276	0	0	94	94	2	278	25	14	0	0	0	0	0	14	0	14	0	14	0	14	1
New Brunswick	476	13	4	85	102	2	476	63	134	0	0	3	0	0	134	2	134	8	134	6	134	9
Atlantic	1017	24	9	234	267	4	1019	145	361	0	5	13	0	0	361	5	361	11	361	9	149	10
Région Nord-Est	320	0	0	59	59	1	281	45	0	0	0	0	0	0	0	0	0	0	N.A.	N.A.	0	0
Québec-Chaudière-Appalaches	637	0	0	156	156	0	671	72	107	0	0	2	1	0	113	2	96	3	N.A.	N.A.	96	3
Centre-du-Québec	719	0	0	104	104	2	574	97	0	0	0	0	0	0	0	0	0	0	N.A.	N.A.	0	0
Montréal-Laval	1268	0	0	178	178	8	1229	105	516	4	0	10	0	0	516	13	512	29	N.A.	N.A.	512	23
Ouest du Québec	335	0	0	62	62	6	323	40	0	0	0	0	0	0	0	0	0	0	N.A.	N.A.	0	0
Montérégie	337	0	0	56	56	2	257	36	0	0	0	0	0	0	0	0	0	0	N.A.	N.A.	0	0
Province of Québec	3616	0	0	615	615	19	3335	395	623	4	0	12	1	0	629	15	608	32	N.A.	N.A.	608	26
Ottawa P.H.L.	24	3	2	0	5	0	24	3	6	0	0	0	0	0	6	0	6	1	0	0	0	0
CHEO - Ottawa	262	0	0	37	37	0	262	27	22	0	0	0	0	0	22	1	22	0	22	5	21	3
Kingston P.H.L.	36	3	9	3	15	1	36	2	14	0	0	0	0	0	14	0	12	0	2	0	0	0
UHN / Mount Sinai Hospital	366	0	0	29	29	3	366	13	19	0	0	0	0	0	0	0	0	0	N.A.	N.A.	N.A.	N.A.
P.H.O.L. - Toronto	318	10	26	4	40	2	308	10	222	0	0	5	0	0	222	0	211	8	11	0	0	0
Sick Kids Hospital - Toronto	66	2	5	2	9	2	52	1	52	0	0	3	0	0	52	2	52	7	52	8	52	0
Sunnybrook & Women's College HSC	58	0	3	1	4	1	58	0	58	0	0	0	0	0	58	0	58	5	58	1	58	5
Sault Ste. Marie P.H.L.	27	7	5	0	12	0	16	1	15	0	0	0	0	0	15	0	15	0	0	0	0	0
Timmins P.H.L.	25	3	0	1	4	0	22	1	22	0	0	0	0	0	22	0	21	0	1	0	0	0
St. Joseph's - London	156	0	0	35	35	1	156	11	32	1	0	0	1	0	32	2	32	1	32	2	15	3
London P.H.L.	107	3	13	13	29	0	107	5	66	0	0	1	0	0	66	0	64	1	2	0	0	0
Orillia P.H.L.	30	1	3	0	4	0	30	4	14	0	0	1	0	0	14	0	14	0	0	0	0	0
Thunder Bay P.H.L.	30	0	9	0	9	0	20	0	20	0	0	1	0	0	20	0	19	0	1	0	0	0
Sudbury P.H.L.	35	3	1	0	4	0	32	0	30	0	0	1	0	0	30	0	29	1	1	0	0	0
Hamilton P.H.L.	105	4	7	3	14	0	102	2	83	1	0	2	0	0	83	0	82	2	1	0	0	0
Peterborough P.H.L.	37	0	8	0	8	0	37	2	18	0	0	0	0	0	18	0	18	0	0	0	0	0
Province of Ontario	1682	39	91	128	258	10	1628	82	693	2	0	14	1	0	674	5	655	26	183	16	146	11
Manitoba	237	2	0	8	10	0	213	28	104	0	0	3	0	0	104	0	91	10	104	7	91	8
Regina	158	10	6	0	16	4	158	29	158	0	0	8	0	0	158	3	158	9	158	16	158	24
Saskatoon	169	0	0	25	25	1	169	26	169	0	0	2	0	0	169	1	169	1	169	2	169	4
Province of Saskatchewan	327	10	6	25	41	5	327	55	327	0	0	10	0	0	327	4	327	10	327	18	327	28
Province of Alberta	789	23	55	33	111	19	657	0	657	0	4	18	2	0	657	12	657	35	657	55	657	55
Prairies	1353	35	61	66	162	24	1197	83	1088	0	4	31	2	0	1088	16	1075	55	1088	80	1075	91
British Columbia	1063	143	145	171	459	13	1063	113	366	0	2	12	0	0	366	6	366	0	259	3	259	38
Yukon	6	0	1	2	3	0	6	2	N.A.	N.A.	N.A.	N.A.	N.A.	N.A.	N.A.	N.A.	N.A.	N.A.	N.A.	N.A.	N.A.	N.A.
Northwest Territories	22	2	0	0	2	1	22	0	22	0	0	3	0	0	22	1	22	0	22	1	22	3
Nunavut	2	1	0	0	1	0	2	0	2	0	0	0	0	0	2	1	2	0	2	1	2	0
Territories	30	3	1	2	6	1	30	2	24	0	0	3	0	0	24	2	24	0	24	2	24	3
CANADA	8761	244	307	1216	1767	71	8272	820	3155	6	11	85	4	0	3142	49	3089	124	1915	110	2261	179

Specimens from Yukon (YT), Northwest Territories (NT) and Nunavut (NU) are sent to reference laboratories in other provinces and reported results reflect specimens identified as originating from YT, NT or NU.

Results from British Columbia comprise of specimens from the following sites: BC Children's and Women's Hospital, Powell River Hospital, St. Paul's Hospital, Vancouver General Hospital, Victoria General Hospital, Interior Health Authority sites and Northern Health Authority sites.

Delays in the reporting of data may cause data to change retrospectively.

Table 2: Respiratory Virus Detections/Isolations for the period August 26, 2018 - March 9, 2019 (Reporting Weeks 201835-201910)

Reporting Laboratory	Flu Tested	A(H1N1)pdm09 Positive	A(H3) Positive	A(UnS) Positive	Total Flu A Positive	Total Flu B Positive	RSV Tested	RSV Positive	PIV Tested	PIV 1 Positive	PIV 2 Positive	PIV 3 Positive	PIV 4 Positive	Other PIV Positive	Adeno Tested	Adeno Positive	hMPV Tested	hMPV Positive	Entero/Rhino Tested	Entero/Rhino Positive	Coron Tested	Coron Positive
Newfoundland	2961	1	0	451	452	2	2961	322	2961	0	47	84	0	0	2961	28	2961	47	2961	268	N.A.	N.A.
Prince Edward Island	884	205	7	0	212	0	882	86	66	1	0	1	3	0	61	5	61	1	61	21	61	2
Nova Scotia	2528	0	0	494	494	8	2528	243	419	0	3	11	2	0	419	0	419	4	419	58	419	6
New Brunswick	9781	210	21	1966	2197	5	9784	862	2479	0	16	16	38	0	2479	110	2479	64	2479	272	2479	103
Atlantic	16154	416	28	2911	3355	15	16155	1513	5925	1	66	112	43	0	5920	143	5920	116	5920	619	2959	111
Région Nord-Est	6514	0	0	1277	1277	9	5068	400	0	0	0	0	0	0	0	0	0	0	N.A.	N.A.	0	0
Québec-Chaudière-Appalaches	11397	0	0	2551	2551	13	11777	1329	2203	4	29	18	9	0	2276	77	1855	16	N.A.	N.A.	1693	20
Centre-du-Québec	13480	0	0	2911	2911	134	10723	1306	0	0	0	0	0	0	36	0	0	0	N.A.	N.A.	0	0
Montréal-Laval	30105	0	0	3687	3687	81	29079	2589	15927	56	147	87	35	0	15927	455	15614	213	N.A.	N.A.	15563	631
Ouest du Québec	10128	0	0	2259	2259	35	9188	1288	0	0	0	0	0	0	0	0	0	0	N.A.	N.A.	0	0
Montérégie	6572	0	0	1128	1129	15	6250	569	0	0	0	0	0	0	0	0	0	0	N.A.	N.A.	0	0
Province of Québec	78196	0	0	13813	13814	287	72085	7481	18130	60	176	105	44	0	18239	532	17469	229	N.A.	N.A.	17256	651
Ottawa P.H.L.	777	88	45	19	152	0	772	79	418	0	3	3	0	0	418	0	400	5	21	0	0	0
CHEO - Ottawa	5911	0	0	618	618	12	5911	808	648	2	8	6	5	0	649	20	648	12	641	169	633	28
Kingston P.H.L.	720	59	36	11	106	5	720	57	511	0	3	5	0	0	511	0	491	3	65	0	0	0
UHN / Mount Sinai Hospital	8739	5	9	598	612	21	8739	422	444	0	9	0	2	0	0	0	401	2	N.A.	N.A.	N.A.	N.A.
P.H.O.L. - Toronto	10517	800	419	72	1291	40	10185	456	8197	12	57	34	0	0	8198	33	7975	72	378	0	0	0
Sick Kids Hospital - Toronto	1994	109	27	95	231	9	1689	208	1689	12	35	26	21	0	1689	64	1689	54	1689	404	1689	113
Sunnybrook & Women's College HSC	1886	68	48	10	126	4	1886	57	1886	4	5	8	1	0	1886	1	1886	37	1886	164	1886	73
Sault Ste. Marie P.H.L.	302	40	8	1	49	0	262	9	250	0	3	0	0	0	250	0	245	3	7	0	0	0
Timmins P.H.L.	295	55	1	1	57	0	238	4	238	0	7	3	0	0	238	0	231	1	15	0	0	0
St. Joseph's - London	3193	3	0	376	379	1	3186	333	1097	3	5	7	14	0	1097	27	1097	32	811	143	620	14
London P.H.L.	3081	301	81	60	442	6	3044	291	2101	2	19	10	0	0	2101	13	2033	16	114	0	0	0
Orillia P.H.L.	849	60	28	15	103	1	849	114	584	1	2	5	0	0	584	1	572	5	25	0	0	0
Thunder Bay P.H.L.	312	28	19	5	52	0	258	7	251	1	1	9	0	0	250	0	237	7	23	0	0	0
Sudbury P.H.L.	652	40	5	0	45	0	612	28	595	1	4	1	0	0	595	2	564	9	53	0	0	0
Hamilton P.H.L.	2784	214	86	28	328	4	2729	122	2152	5	14	20	0	0	2152	11	2116	15	75	0	0	0
Peterborough P.H.L.	831	42	26	17	85	2	828	46	655	2	3	0	0	0	655	0	648	5	9	0	0	0
Province of Ontario	42843	1912	838	1926	4676	105	41908	3041	21716	45	178	137	43	0	21273	172	21233	278	5900	885	4923	233
Manitoba	7656	282	21	719	1022	8	7471	403	3037	1	11	24	12	0	3037	30	1848	48	3037	353	1882	71
Regina	7017	1405	74	147	1626	18	7017	376	8950	4	60	128	35	0	7017	99	7017	95	7017	1292	7017	155
Saskatoon	4785	0	0	715	715	10	4785	318	4785	2	7	18	13	0	4785	28	4785	38	4785	271	4785	54
Province of Saskatchewan	11802	1405	74	862	2341	28	11802	694	13735	6	67	146	48	0	11802	127	11802	133	11802	1563	11802	209
Province of Alberta	27533	3517	285	1791	5593	98	22172	0	22172	23	199	291	213	0	22172	291	22172	472	22172	3408	22172	998
Prairies	46991	5204	380	3372	8956	134	41445	1097	38944	30	277	461	273	0	37011	448	35822	653	37011	5324	35856	1278
British Columbia	17761	2752	620	1187	4559	57	17761	1084	7371	10	61	175	89	0	7371	99	7371	26	5651	1256	5651	302
Yukon	267	50	4	20	74	0	267	17	N.A.	N.A.	N.A.	N.A.	N.A.	N.A.	N.A.	N.A.	N.A.	N.A.	N.A.	N.A.	N.A.	N.A.
Northwest Territories	610	157	2	0	159	1	606	0	606	1	0	23	3	0	606	20	606	3	606	106	606	32
Nunavut	67	20	0	0	20	0	67	0	67	0	0	0	0	0	67	11	66	0	67	20	66	7
Territories	944	227	6	20	253	1	940	17	673	1	0	23	3	0	673	31	672	3	673	126	672	39
CANADA	202889	10511	1872	23229	35613	599	190294	14233	92759	147	758	1013	495	0	90487	1425	88487	1305	55155	8210	67317	2614

Specimens from YT, NT and NU are sent to reference laboratories in other provinces and reported results reflect specimens identified as originating from YT, NT or NU.

Results from British Columbia comprise of specimens from the following sites: BC Children's and Women's Hospital, Powell River Hospital, St. Paul's Hospital, Vancouver General Hospital, Victoria General Hospital, Interior Health Authority sites and Northern Health Authority sites.

Delays in the reporting of data may cause data to change retrospectively.

Due to reporting delays, the sum of weekly report totals do not add up to cumulative totals.

Figure 1: Number positive laboratory tests for other respiratory viruses by report week, Canada, 2018-19

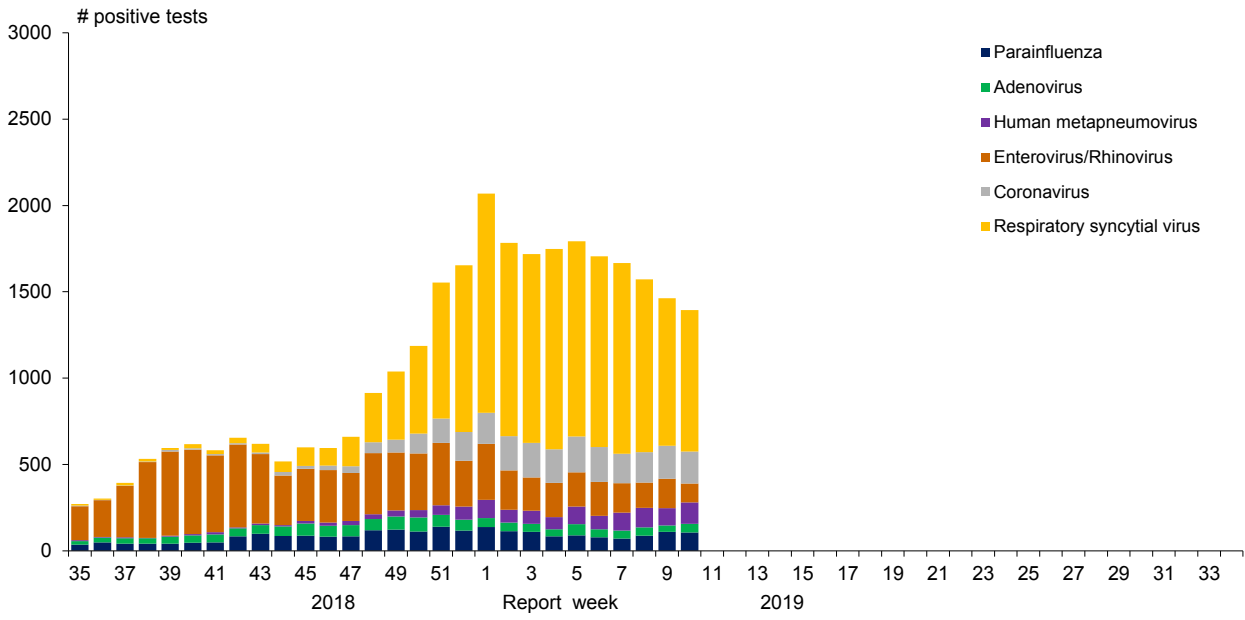


Figure 2: Positive Influenza Tests (%) in Canada by Region by Week of Report

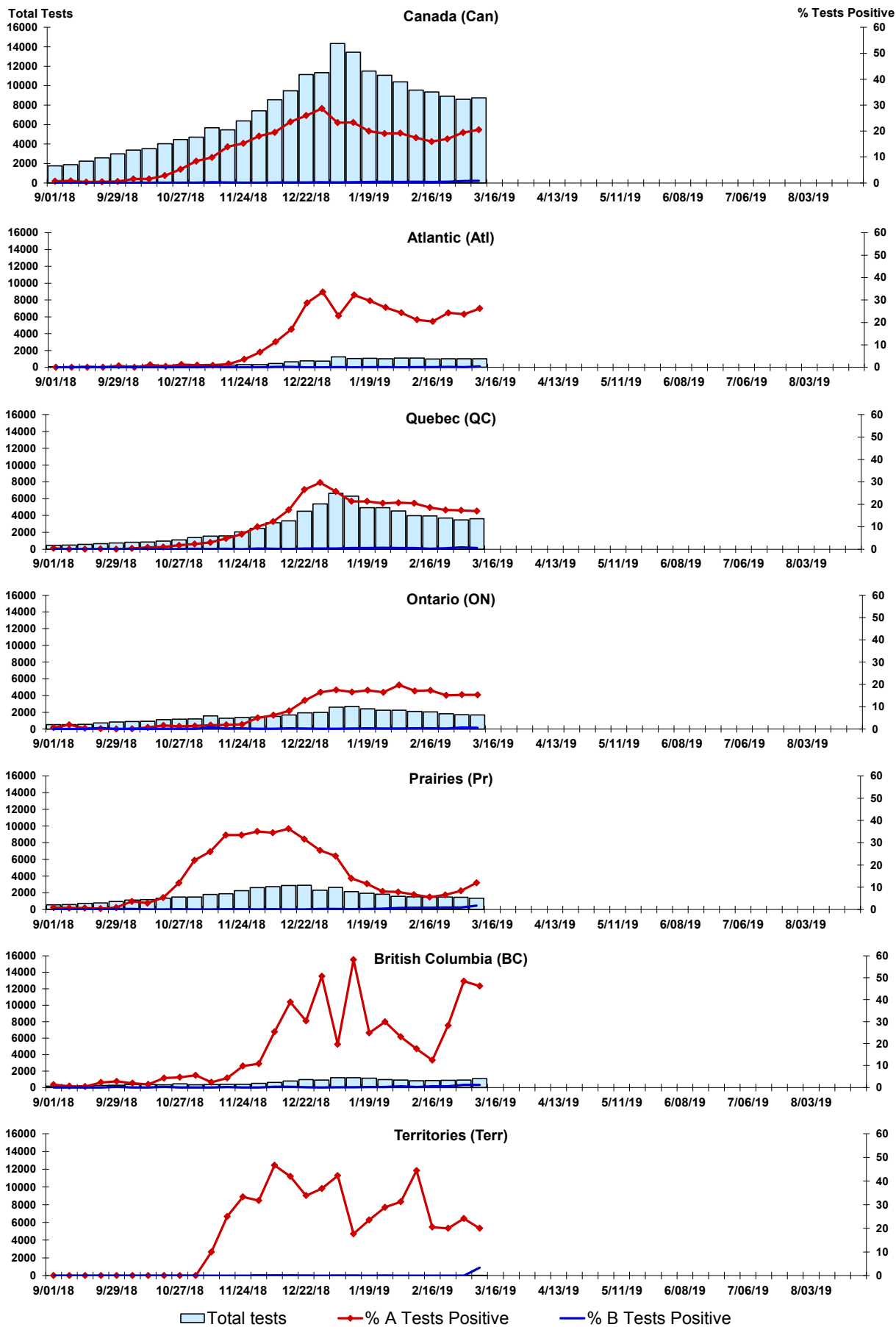


Figure 3: Positive Respiratory syncytial virus (RSV) Tests (%) in Canada by Region by Week of Report

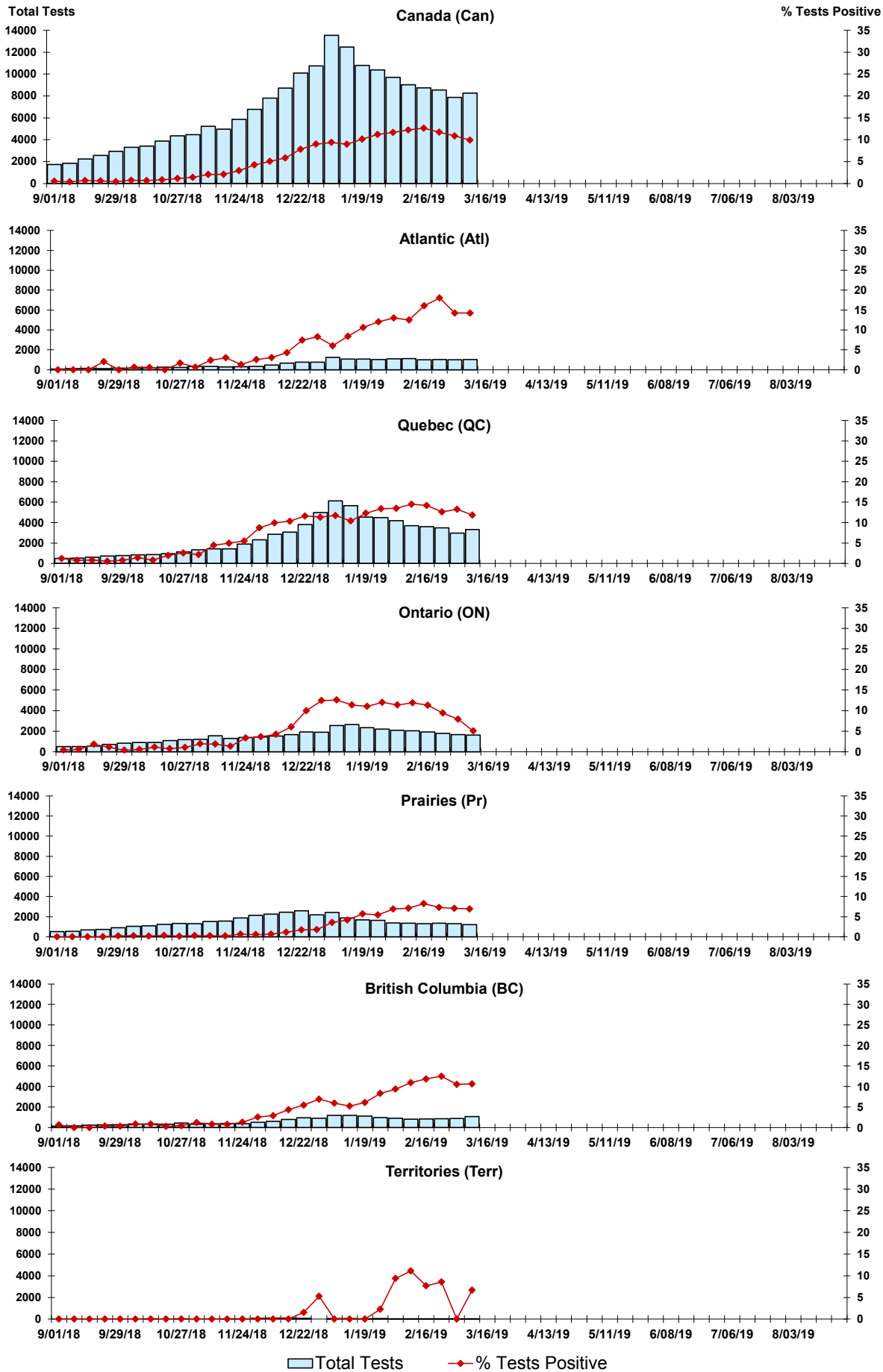


Figure 4: Positive Parainfluenza (PIV) Tests (%) in Canada by Region by Week of Report

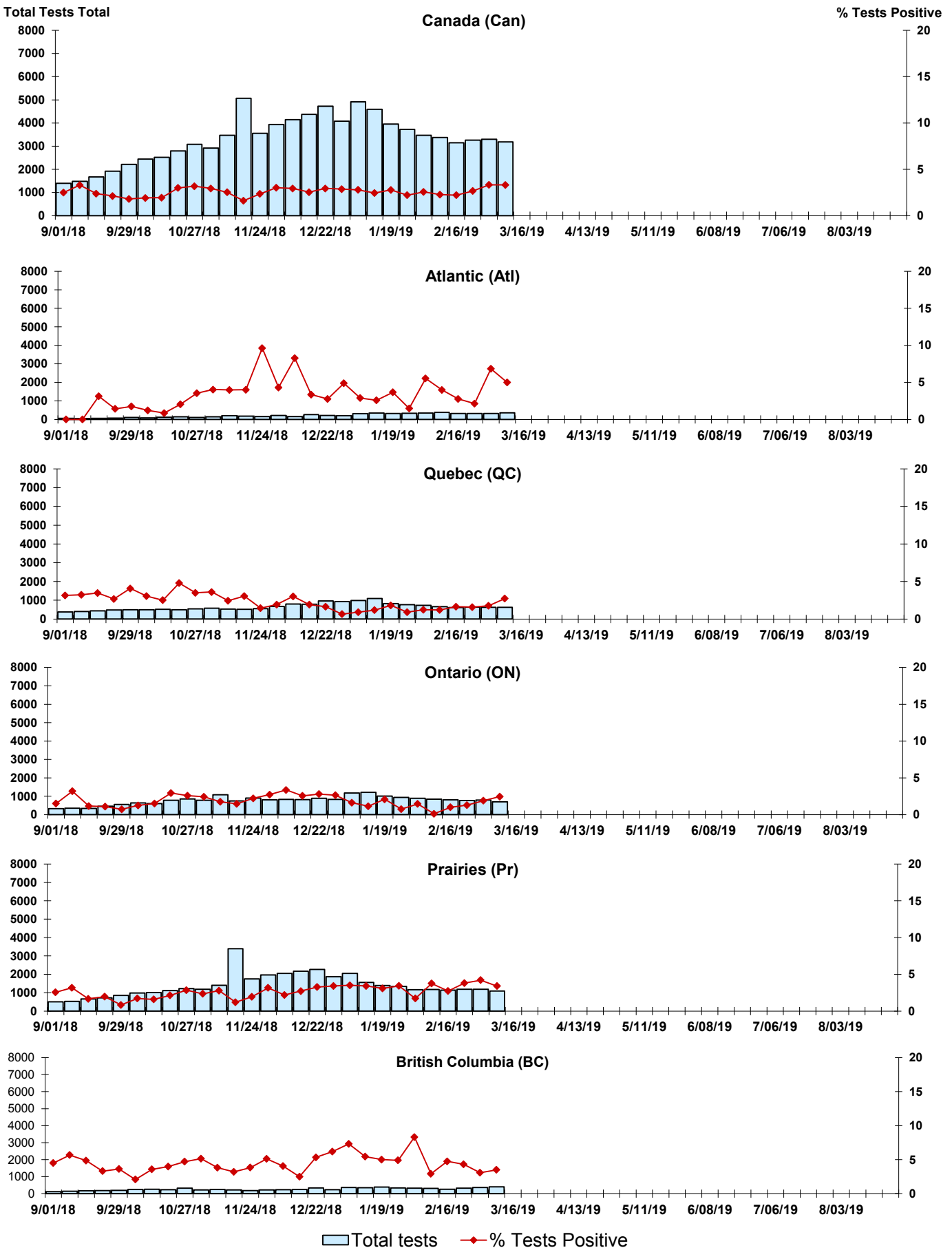


Figure 5: Positive Adenovirus (adeno) Tests (%) in Canada by Region by Week of Report

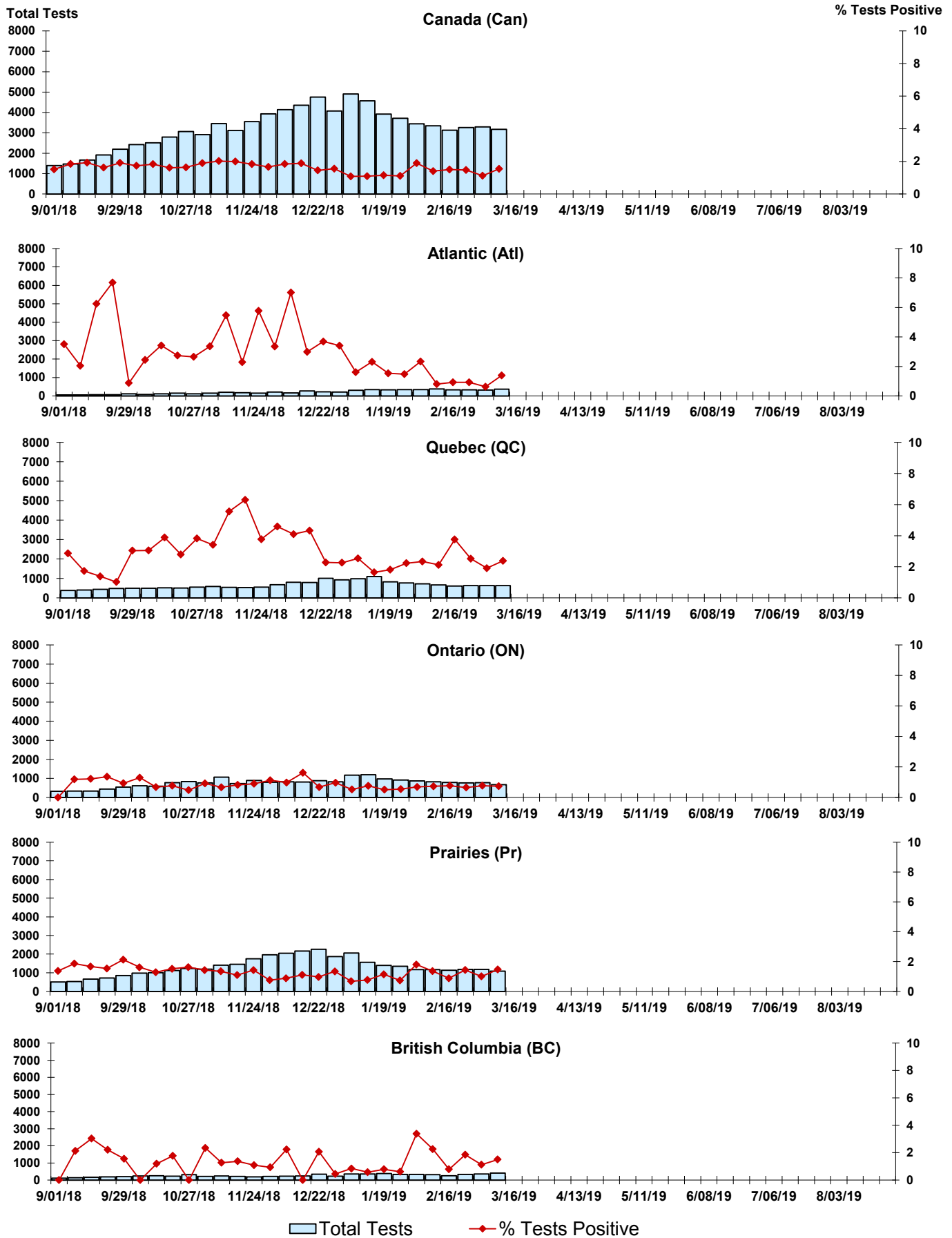
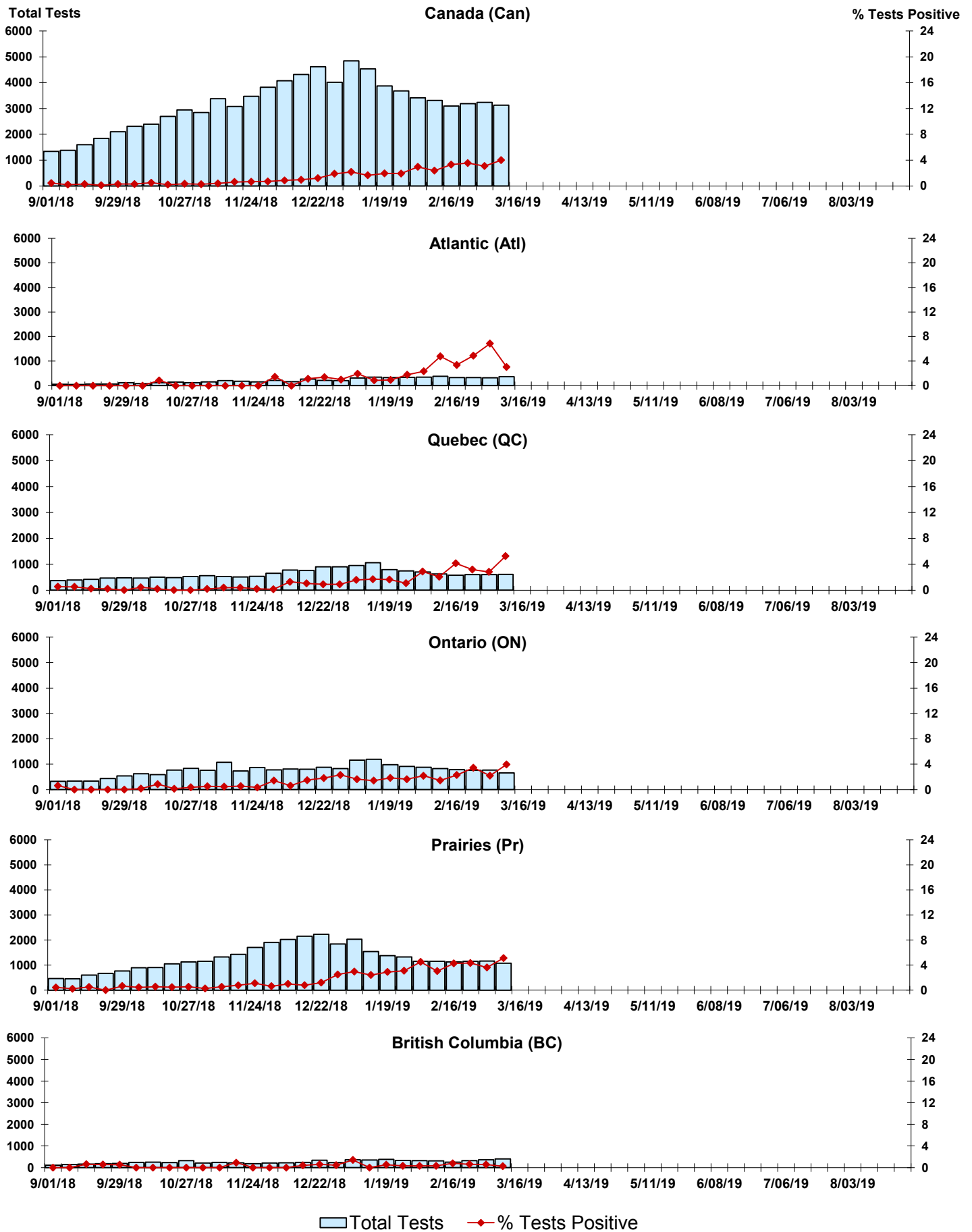


Figure 6: Positive human metapneumovirus (hMPV) Tests (%) in Canada by Region by Week of Report



Legend: Total Tests (light blue bar), % Tests Positive (red line with diamond)

Figure 7: Positive Enterovirus/Rhinovirus (entero/rhino) Tests (%) in Canada by Region by Week of Report

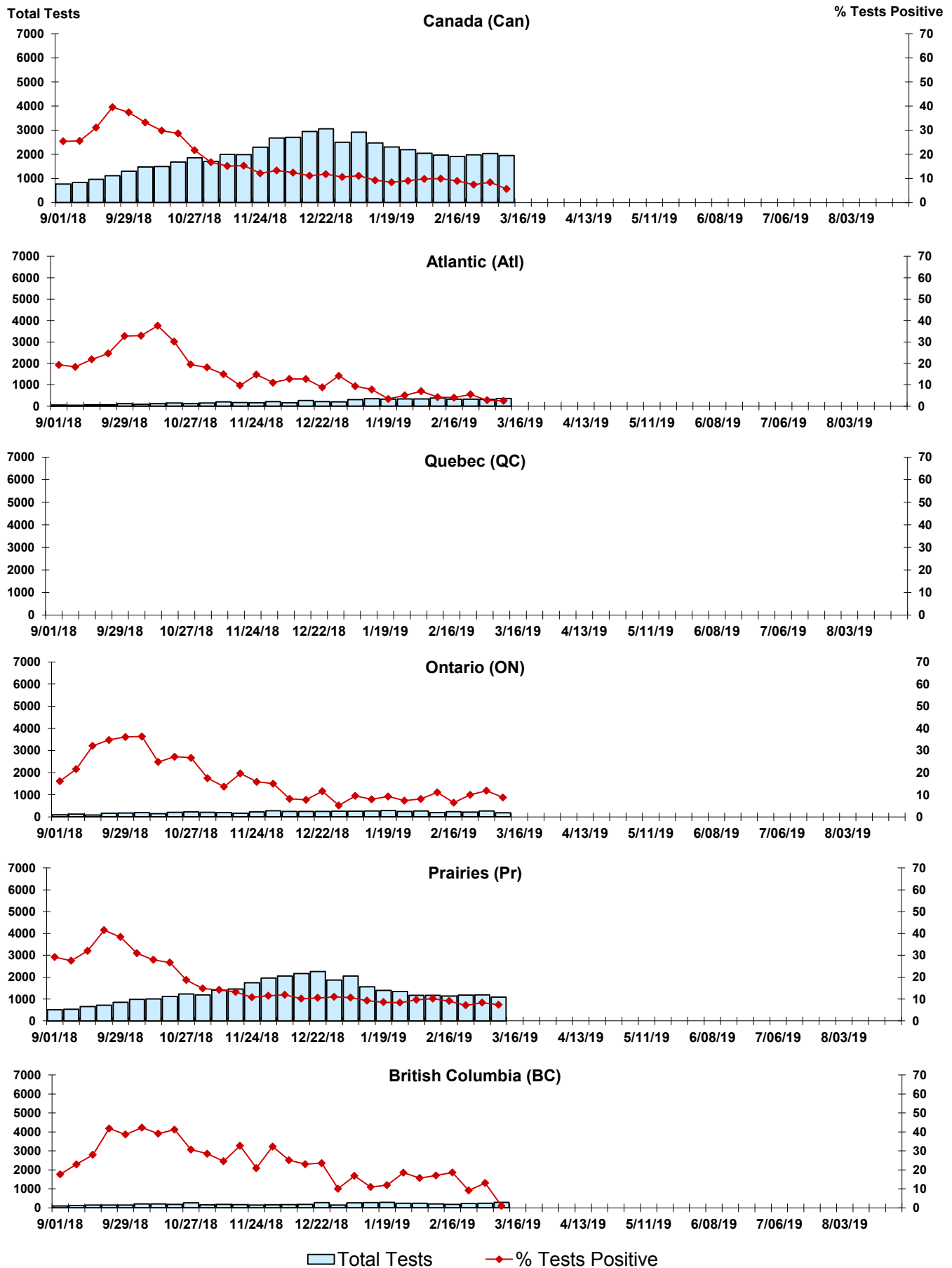
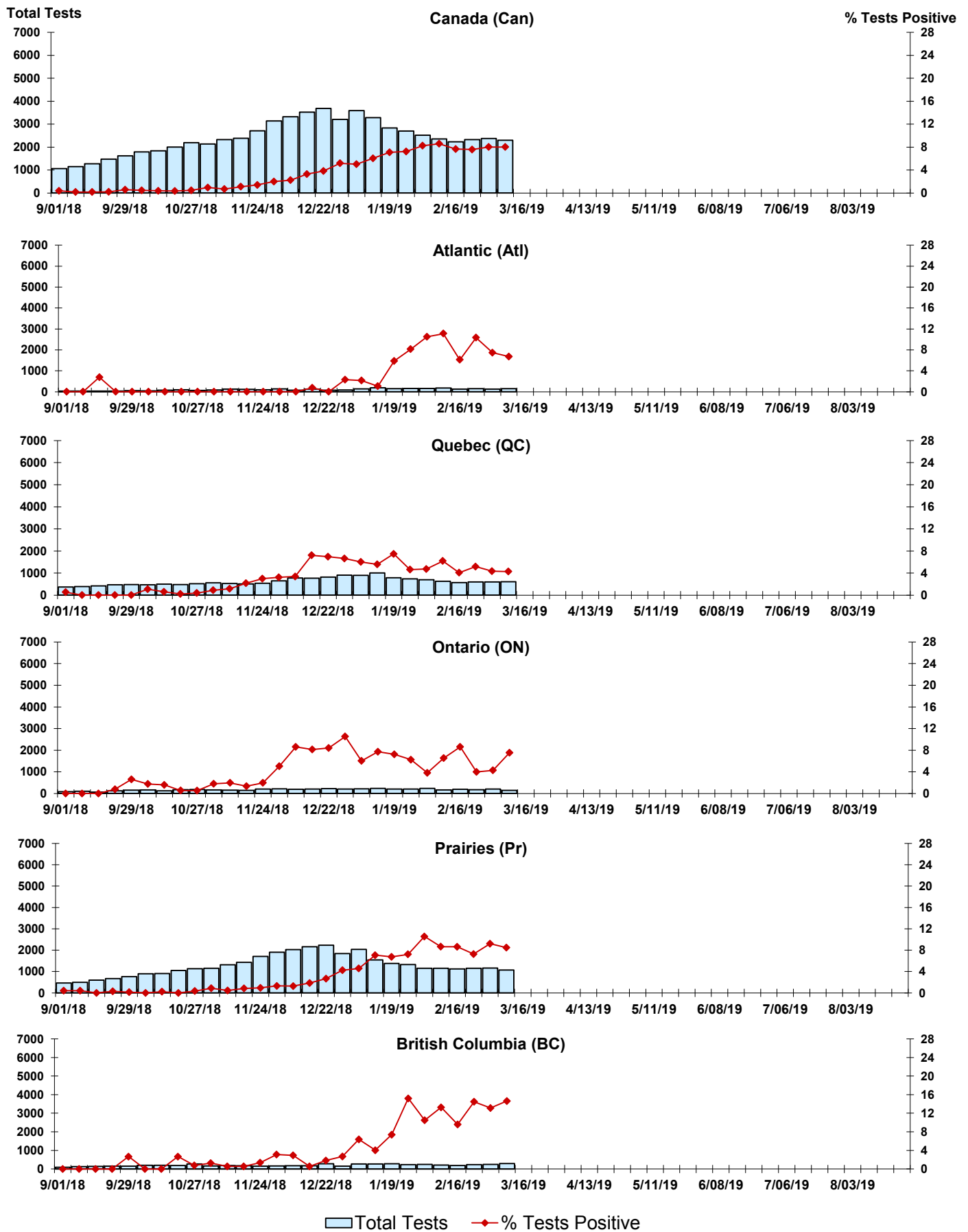


Figure 8: Positive Coronavirus (coron) Tests (%) in Canada by Region by Week of Report



Abbreviations:

A(H1N1)pdm09: Influenza A(H1N1)pdm09

A(H3): Influenza A(H3N2)

A (UnS): Influenza A (Unsubtyped)

Adeno: Adenovirus

CHEO: Children's Hospital of Eastern Ontario

Coron: Coronavirus

Entero: Enterovirus

hMPV: human metapneumovirus

HSC: Health Sciences Centre

N.A.: Not Applicable

P.H.L.: Public Health Laboratory

P.H.O.L.: Public Health Ontario Laboratory

PIV: Parainfluenza

Rhino: Rhinovirus

RSV: Respiratory syncytial virus

UHN: University Health Network

Notes:

Specimens from Yukon (YT), Northwest Territories (NT) and Nunavut (NU) are sent to reference laboratories in other provinces. Results reported for the Territories reflect the number of specimens that are identified as originating from YT, NT or NU.

Delays in the reporting of data may cause data to change retrospectively.

Due to reporting delays, the sum of weekly report totals do not add up to cumulative totals.