

Respiratory Virus Detections in Canada

Respiratory Virus Report, Week 12 - ending March 23, 2019

The Respiratory Virus Detection Surveillance System collects data from select laboratories across Canada on the number of tests performed and the number of tests positive for influenza and other respiratory viruses. Data are reported on a weekly basis year-round to the Centre for Immunization and Respiratory Infectious Diseases (CIRID), Public Health Agency of Canada. These data are also summarized in the weekly FluWatch report.

Table 1: Respiratory Virus Detections/Isolations for the week ending March 23, 2019 (Reporting Week 201912)

Reporting Laboratory	Flu Tested	A(H1N1)pdm09 Positive	A(H3) Positive	A(UnS) Positive	Total Flu A Positive	Total Flu B Positive	RSV Tested	RSV Positive	PIV Tested	PIV 1 Positive	PIV 2 Positive	PIV 3 Positive	PIV 4 Positive	Other PIV Positive	Adeno Tested	Adeno Positive	hMPV Tested	hMPV Positive	Entero/Rhino Tested	Entero/Rhino Positive	Coron Tested	Coron Positive
Newfoundland	220	0	0	78	78	1	220	22	220	0	1	10	0	0	220	3	220	15	220	5	N.A.	N.A.
Prince Edward Island	65	5	9	0	14	0	65	15	2	0	0	0	0	0	2	0	2	0	2	1	2	0
Nova Scotia	244	0	0	77	77	2	245	17	10	0	1	0	0	0	10	0	10	1	10	2	10	0
New Brunswick	594	13	6	101	120	24	594	54	134	0	0	3	0	0	134	4	134	13	134	10	134	10
Atlantic	1123	18	15	256	289	27	1124	108	366	0	2	14	0	0	366	7	366	29	366	18	146	10
Région Nord-Est	313	0	0	44	44	5	263	45	0	0	0	0	0	0	0	0	0	0	N.A.	N.A.	0	0
Québec-Chaudière-Appalaches	522	0	0	108	108	3	531	42	66	0	1	0	0	0	65	0	55	4	N.A.	N.A.	55	0
Centre-du-Québec	574	0	0	76	76	5	489	66	0	0	0	0	0	0	0	0	0	0	N.A.	N.A.	0	0
Montréal-Laval	1072	0	0	113	113	6	1064	71	474	2	0	22	0	0	474	17	469	35	N.A.	N.A.	469	11
Ouest du Québec	315	0	0	47	47	5	289	25	0	0	0	0	0	0	0	0	0	0	N.A.	N.A.	0	0
Montérégie	285	0	0	35	35	2	285	29	0	0	0	0	0	0	0	0	0	0	N.A.	N.A.	0	0
Province of Québec	3081	0	0	423	423	26	2921	278	540	2	1	22	0	0	539	17	524	39	N.A.	N.A.	524	11
Ottawa P.H.L.	19	0	2	0	2	1	19	2	8	0	0	0	0	0	8	0	8	0	0	0	0	0
CHEO - Ottawa	265	0	0	29	29	2	265	26	27	0	1	1	0	0	27	0	27	1	27	8	25	2
Kingston P.H.L.	34	3	8	0	11	2	34	4	10	0	0	0	0	0	10	0	9	0	1	0	0	0
UHN / Mount Sinai Hospital	323	0	0	26	26	3	323	12	24	0	0	1	0	0	0	0	24	1	N.A.	N.A.	N.A.	N.A.
P.H.O.L. - Toronto	311	11	27	9	47	2	304	12	235	1	1	2	0	0	235	2	228	11	7	0	0	0
Sick Kids Hospital - Toronto	0	0	0	0	0	0	0	0	0	0	0	0	0	0	0	0	0	0	0	0	0	0
Sunnybrook & Women's College HSC	89	0	8	0	8	0	89	1	89	0	0	0	0	0	89	0	89	5	89	1	89	3
Sault Ste. Marie P.H.L.	29	2	12	1	15	0	17	1	13	0	0	0	0	0	13	0	13	0	0	0	0	0
Timmins P.H.L.	6	1	1	0	2	0	4	0	4	0	0	0	0	0	4	0	4	0	0	0	0	0
St. Joseph's - London	177	0	0	32	32	0	177	3	43	1	0	1	0	0	43	0	43	3	43	2	28	0
London P.H.L.	107	2	15	3	20	1	107	5	73	0	2	2	0	0	73	0	72	1	1	0	0	0
Orillia P.H.L.	40	3	5	4	12	0	40	4	21	1	0	0	0	0	21	0	21	0	0	0	0	0
Thunder Bay P.H.L.	10	0	0	0	0	0	9	3	9	0	0	1	0	0	9	0	9	0	0	0	0	0
Sudbury P.H.L.	25	1	0	0	1	0	24	1	22	0	0	0	0	0	22	1	21	0	1	0	0	0
Hamilton P.H.L.	129	1	13	1	15	0	118	2	108	2	0	2	0	0	108	1	105	6	3	0	0	0
Peterborough P.H.L.	32	0	9	1	10	0	32	0	14	0	0	1	0	0	14	0	14	0	0	0	0	0
Province of Ontario	1596	24	100	106	230	11	1562	76	700	5	4	11	0	0	676	4	687	28	196	13	166	7
Manitoba	202	2	3	6	11	3	182	22	106	0	1	2	0	0	106	2	84	7	106	11	84	15
Regina	198	3	9	1	13	14	198	44	198	0	0	12	0	0	198	4	198	12	198	16	198	27
Saskatoon	232	0	0	25	25	4	232	24	232	0	0	2	0	6	232	0	232	9	232	16	232	5
Province of Saskatchewan	430	3	9	26	38	18	430	68	430	0	0	14	0	6	430	4	430	21	430	32	430	32
Province of Alberta	829	22	87	50	159	22	687	0	687	2	2	31	0	0	687	16	687	46	687	64	687	42
Prairies	1461	27	99	82	208	43	1299	90	1223	2	3	47	0	6	1223	22	1201	74	1223	107	1201	89
British Columbia	1291	59	125	355	539	22	1291	99	398	0	1	23	1	0	398	8	398	4	242	30	242	32
Yukon	6	0	0	0	0	0	6	0	N.A.	N.A.	N.A.	N.A.	N.A.	N.A.	N.A.	N.A.	N.A.	N.A.	N.A.	N.A.	N.A.	N.A.
Northwest Territories	11	3	0	0	3	0	11	0	11	0	0	0	0	0	11	0	11	0	11	0	11	3
Nunavut	1	0	0	0	0	0	1	0	1	0	0	0	0	0	1	0	1	0	1	1	1	0
Territories	18	3	0	0	3	0	18	0	12	0	0	0	0	0	12	0	12	0	12	1	12	3
CANADA	8570	131	339	1222	1692	129	8215	651	3239	9	11	117	1	6	3214	58	3188	174	2039	169	2291	152

Specimens from Yukon (YT), Northwest Territories (NT) and Nunavut (NU) are sent to reference laboratories in other provinces and reported results reflect specimens identified as originating from YT, NT or NU.

Results from British Columbia comprise of specimens from the following sites: BC Children's and Women's Hospital, Powell River Hospital, St. Paul's Hospital, Vancouver General Hospital, Victoria General Hospital, Interior Health Authority sites and Northern Health Authority sites.

Delays in the reporting of data may cause data to change retrospectively.

Table 2: Respiratory Virus Detections/Isolations for the period August 26, 2018 - March 23, 2019 (Reporting Weeks 201835-201912)

Reporting Laboratory	Flu Tested	A(H1N1)pdm09 Positive	A(H3) Positive	A(UnS) Positive	Total Flu A Positive	Total Flu B Positive	RSV Tested	RSV Positive	PIV Tested	PIV 1 Positive	PIV 2 Positive	PIV 3 Positive	PIV 4 Positive	Other PIV Positive	Adeno Tested	Adeno Positive	hMPV Tested	hMPV Positive	Entero/Rhino Tested	Entero/Rhino Positive	Coron Tested	Coron Positive
Newfoundland	3363	1	0	575	576	3	3363	366	3363	0	50	98	0	0	3363	32	3363	71	3363	276	N.A.	N.A.
Prince Edward Island	1003	216	27	0	243	0	1001	109	69	1	0	1	3	0	64	5	64	2	64	22	64	2
Nova Scotia	2986	0	0	628	628	10	2987	287	450	0	4	12	2	0	450	0	450	6	450	60	450	9
New Brunswick	10834	230	34	2175	2439	33	10837	986	2740	0	16	26	38	0	2740	115	2740	95	2740	296	2740	123
Atlantic	18186	447	61	3378	3886	46	18188	1748	6622	1	70	137	43	0	6617	152	6617	174	6617	654	3254	134
Région Nord-Est	7160	0	0	1363	1363	15	5618	504	0	0	0	0	0	0	0	0	0	0	N.A.	N.A.	0	0
Québec-Chaudière-Appalaches	12527	0	0	2763	2763	18	12665	1395	2357	4	32	21	9	0	2434	80	1980	21	N.A.	N.A.	1818	21
Centre-du-Québec	14726	0	0	3078	3078	140	11744	1436	0	0	0	0	0	0	36	0	0	0	N.A.	N.A.	0	0
Montréal-Laval	32380	0	0	3957	3957	93	31328	2742	16901	60	147	119	35	0	16901	487	16573	268	N.A.	N.A.	16522	657
Ouest du Québec	10789	0	0	2371	2371	42	9800	1339	0	0	0	0	0	0	0	0	0	0	N.A.	N.A.	0	0
Montérégie	7116	0	0	1203	1204	22	6743	618	0	0	0	0	0	0	0	0	0	0	N.A.	N.A.	0	0
Province of Québec	84698	0	0	14735	14736	330	77898	8034	19258	64	179	140	44	0	19371	567	18553	289	N.A.	N.A.	18340	678
Ottawa P.H.L.	818	91	48	19	158	2	813	84	444	0	3	4	0	0	444	0	425	5	23	0	0	0
CHEO - Ottawa	6430	0	0	687	687	16	6430	859	691	2	9	8	5	0	692	20	691	13	684	179	672	31
Kingston P.H.L.	774	64	45	11	120	7	774	61	538	0	3	5	0	0	538	0	515	4	68	0	0	0
UHN / Mount Sinai Hospital	9357	5	10	638	653	28	9357	445	489	0	9	1	2	0	0	0	446	3	N.A.	N.A.	N.A.	N.A.
P.H.O.L. - Toronto	11164	833	480	81	1394	43	10802	484	8703	13	58	38	0	0	8704	39	8460	92	404	0	0	0
Sick Kids Hospital - Toronto	1994	109	27	95	231	9	1689	208	1689	12	35	26	21	0	1689	64	1689	54	1689	404	1689	113
Sunnybrook & Women's College HSC	2047	71	60	10	141	5	2047	60	2047	4	5	9	1	0	2047	1	2047	47	2047	169	2047	81
Sault Ste. Marie P.H.L.	357	45	26	2	73	0	297	12	279	0	3	0	0	0	279	0	273	5	10	0	0	0
Timmins P.H.L.	308	56	3	1	60	0	248	4	248	0	7	3	0	0	248	0	241	1	15	0	0	0
St. Joseph's - London	3535	3	0	431	434	1	3528	341	1186	4	5	10	14	0	1186	27	1186	35	878	146	669	14
London P.H.L.	3311	309	128	56	493	9	3274	301	2248	4	21	12	0	0	2248	13	2176	17	121	0	0	0
Orillia P.H.L.	919	65	35	20	120	1	919	120	635	2	2	5	0	0	635	1	623	5	27	0	0	0
Thunder Bay P.H.L.	336	28	20	5	53	0	280	11	273	1	1	10	0	0	272	2	259	7	24	0	0	0
Sudbury P.H.L.	701	45	5	0	50	0	656	29	637	1	4	1	0	0	637	3	604	9	60	0	0	0
Hamilton P.H.L.	3016	225	112	30	367	4	2945	124	2335	7	14	24	0	0	2335	14	2295	24	86	0	0	0
Peterborough P.H.L.	892	43	39	18	100	2	889	47	697	2	4	1	0	0	697	0	689	5	10	0	0	0
Province of Ontario	45959	1992	1038	2104	5134	127	44948	3190	23139	52	183	157	43	0	22651	184	22619	326	6279	908	5217	247
Manitoba	8124	290	39	716	1045	11	7874	464	3265	1	12	30	12	0	3265	32	2032	59	3265	371	2066	93
Regina	7358	1413	88	149	1650	41	7358	446	9291	4	60	153	35	0	7358	106	7358	112	7358	1318	7358	204
Saskatoon	5204	0	0	759	759	14	5204	368	5204	2	7	22	13	6	5204	30	5204	54	5204	292	5204	62
Province of Saskatchewan	12562	1413	88	908	2409	55	12562	814	14495	6	67	175	48	6	12562	136	12562	166	12562	1610	12562	266
Province of Alberta	29245	3551	439	1909	5899	142	23533	0	23533	25	207	346	219	0	23533	321	23533	554	23533	3545	23533	1090
Prairies	49931	5254	566	3533	9353	208	43969	1278	41293	32	286	551	279	6	39360	489	38127	779	39360	5526	38161	1449
British Columbia	20214	2937	934	1417	5288	105	20214	1292	8233	11	62	212	92	0	8233	118	8233	33	6197	1317	6197	365
Yukon	278	50	4	20	74	0	278	17	N.A.	N.A.	N.A.	N.A.	N.A.	N.A.	N.A.	N.A.	N.A.	N.A.	N.A.	N.A.	N.A.	N.A.
Northwest Territories	660	164	2	0	166	1	656	0	656	2	0	24	3	0	656	20	656	4	656	113	656	44
Nunavut	69	20	0	0	20	0	69	0	69	0	0	0	0	0	69	11	68	0	69	21	68	7
Territories	1007	234	6	20	260	1	1003	17	725	2	0	24	3	0	725	31	724	4	725	134	724	51
CANADA	219995	10864	2605	25187	38657	817	206220	15559	99270	162	780	1221	504	6	96957	1541	94873	1605	59178	8539	71893	2924

Specimens from YT, NT and NU are sent to reference laboratories in other provinces and reported results reflect specimens identified as originating from YT, NT or NU.

Results from British Columbia comprise of specimens from the following sites: BC Children's and Women's Hospital, Powell River Hospital, St. Paul's Hospital, Vancouver General Hospital, Victoria General Hospital, Interior Health Authority sites and Northern Health Authority sites.

Delays in the reporting of data may cause data to change retrospectively.

Due to reporting delays, the sum of weekly report totals do not add up to cumulative totals.

Figure 1: Number positive laboratory tests for other respiratory viruses by report week, Canada, 2018-19

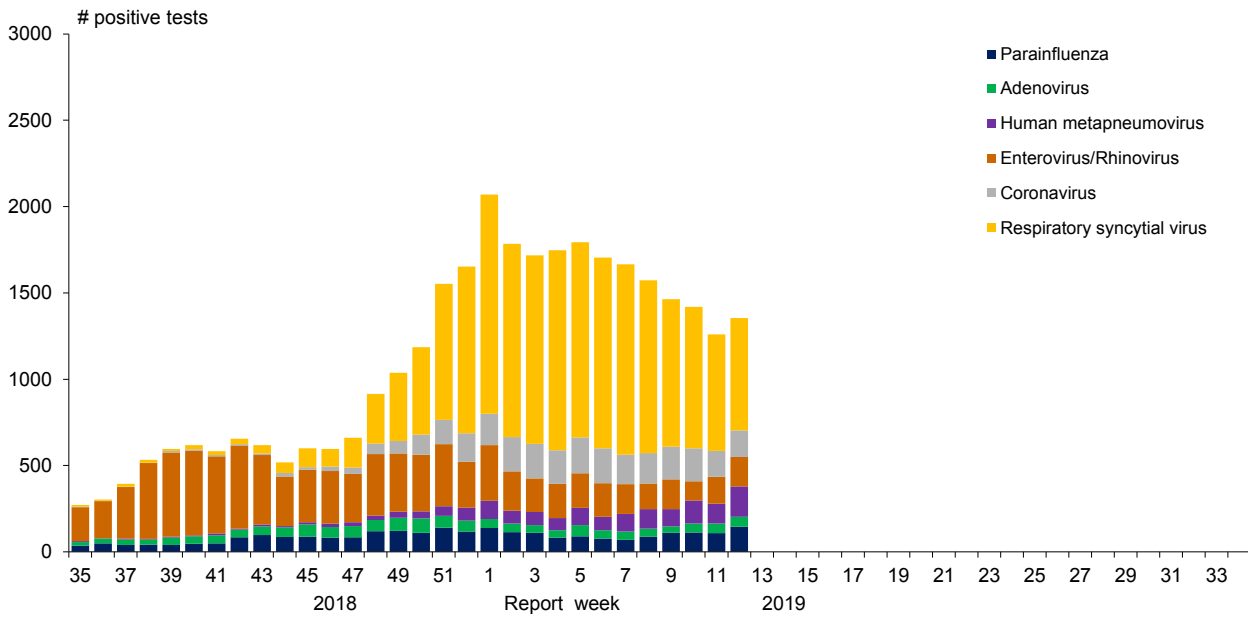


Figure 2: Positive Influenza Tests (%) in Canada by Region by Week of Report

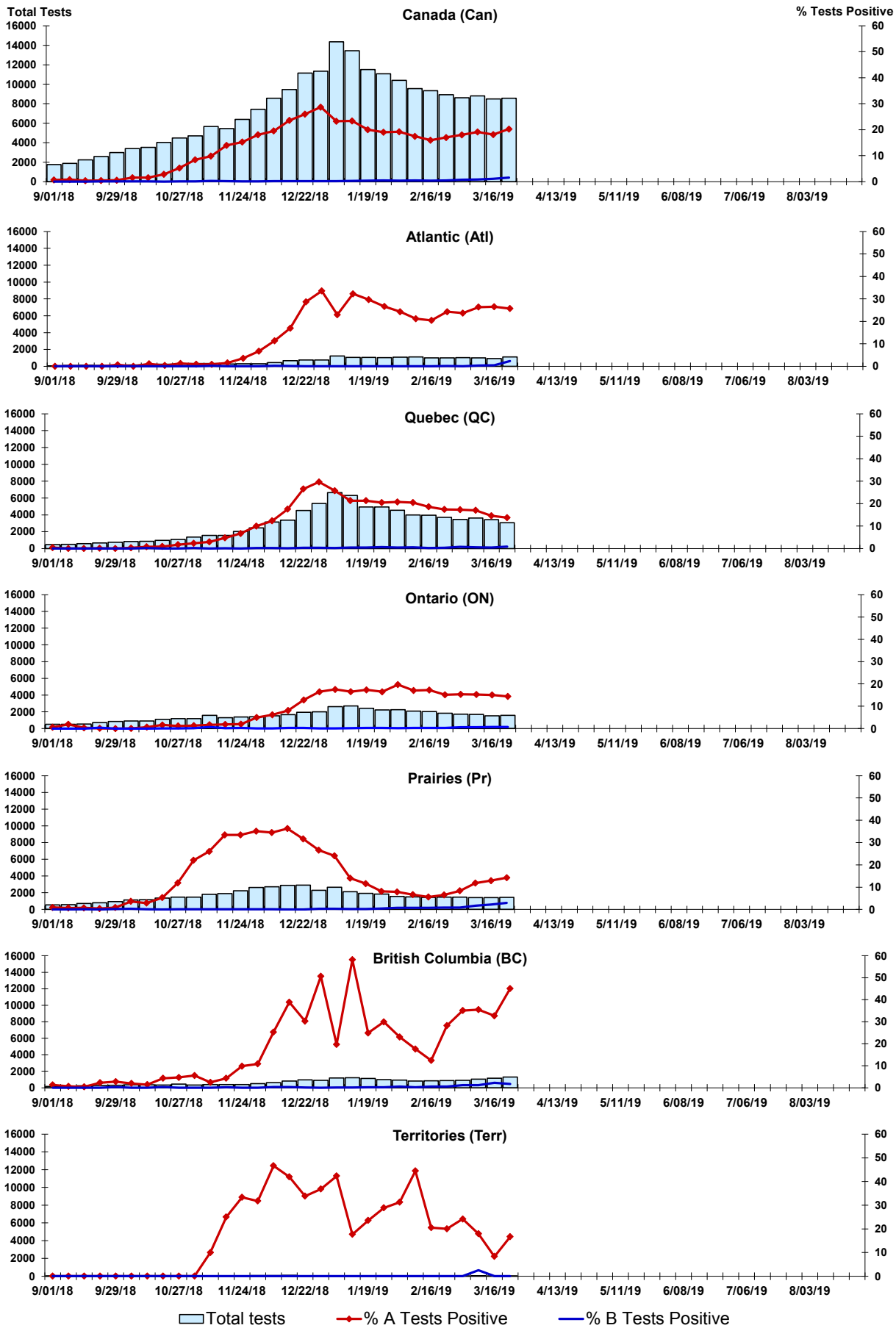


Figure 3: Positive Respiratory syncytial virus (RSV) Tests (%) in Canada by Region by Week of Report

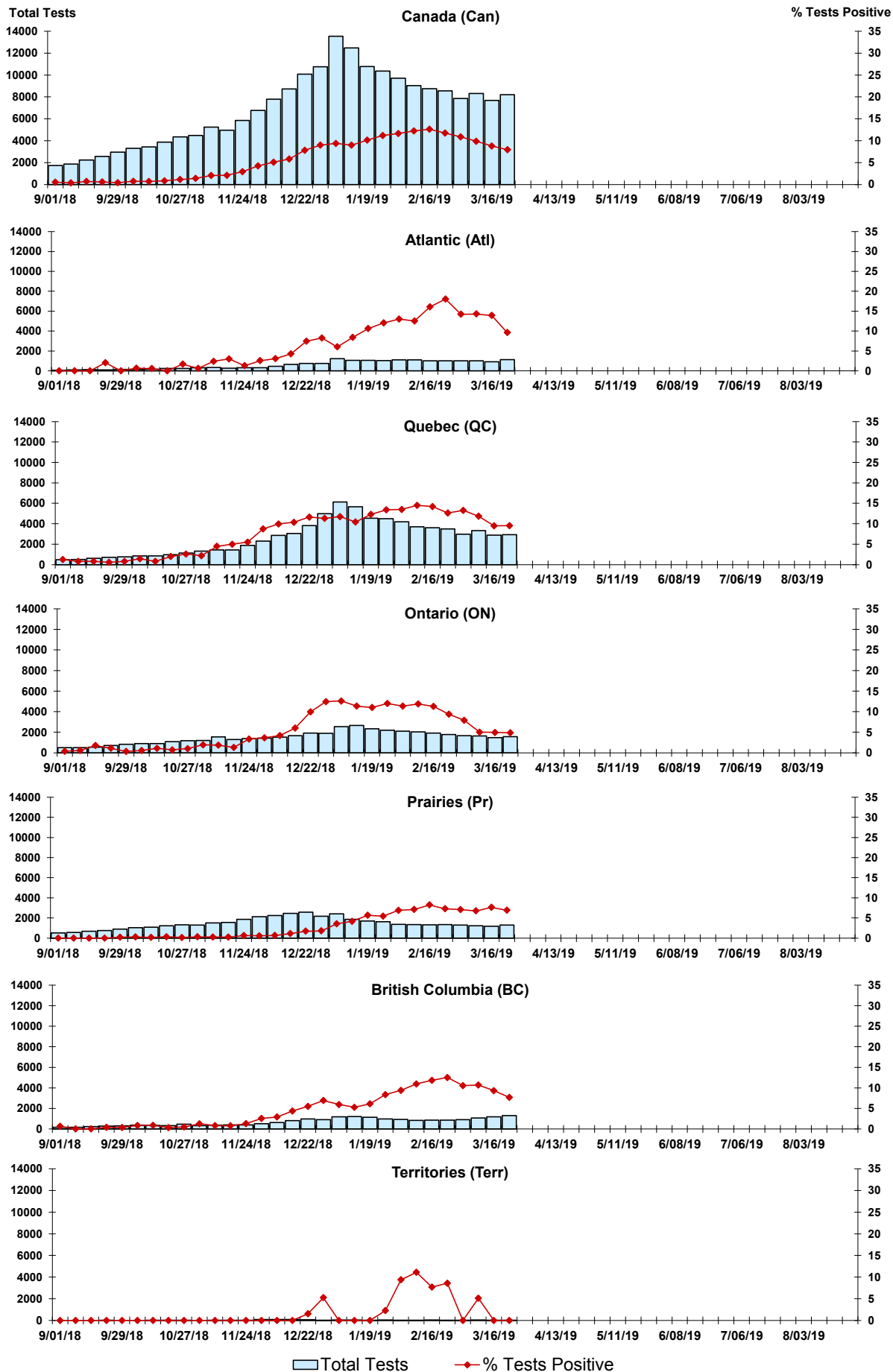


Figure 4: Positive Parainfluenza (PIV) Tests (%) in Canada by Region by Week of Report

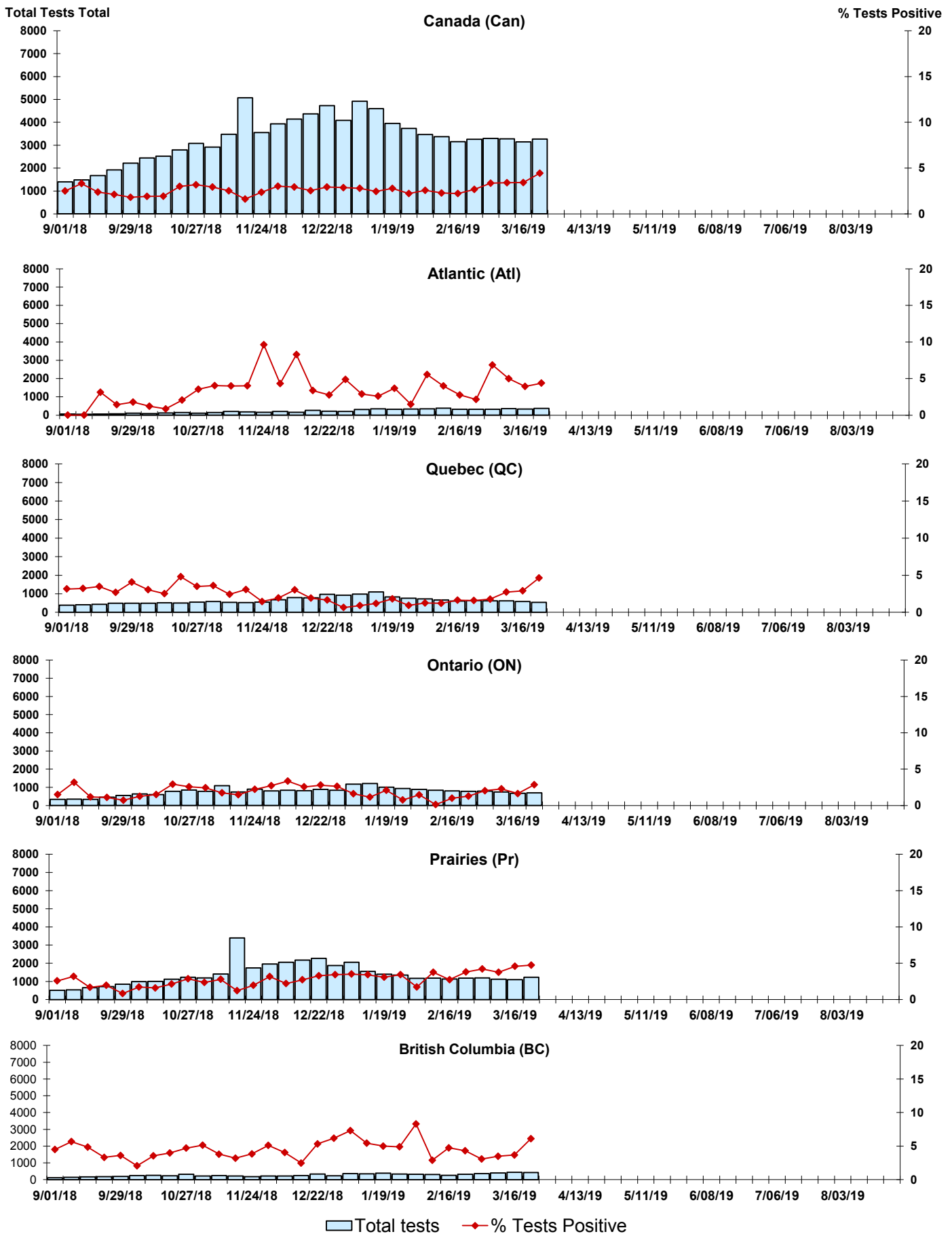


Figure 5: Positive Adenovirus (adeno) Tests (%) in Canada by Region by Week of Report

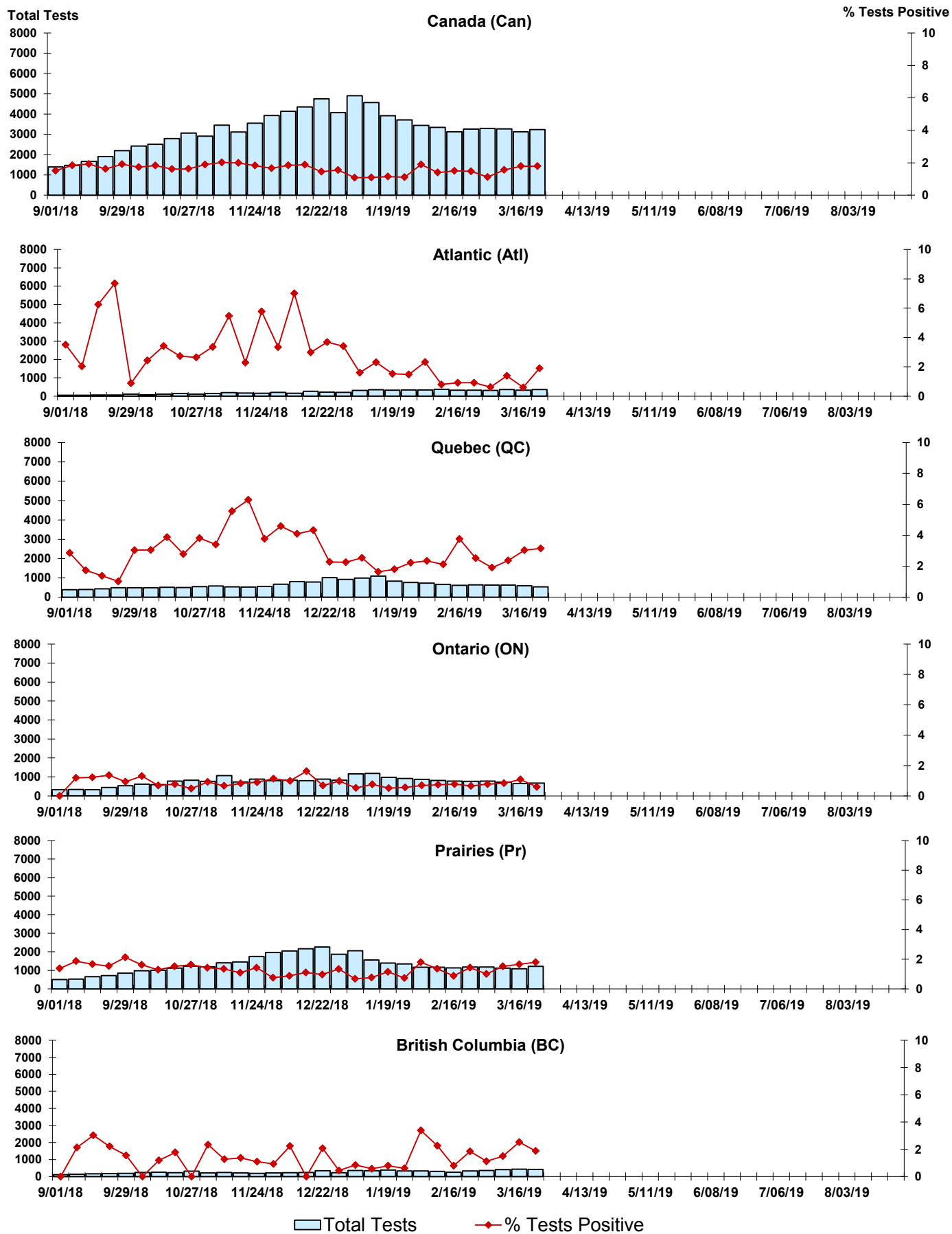


Figure 6: Positive human metapneumovirus (hMPV) Tests (%) in Canada by Region by Week of Report

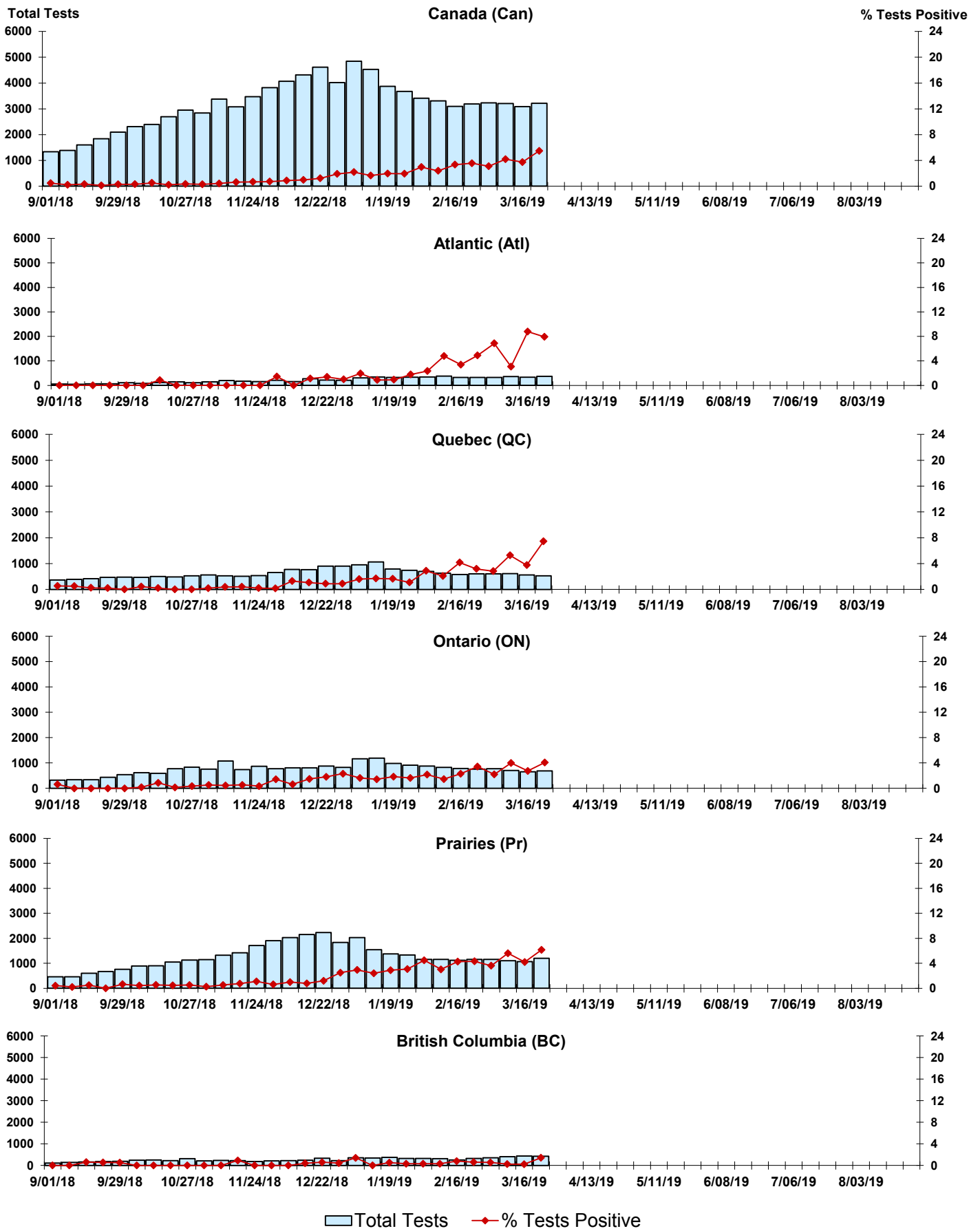


Figure 7: Positive Enterovirus/Rhinovirus (entero/rhino) Tests (%) in Canada by Region by Week of Report

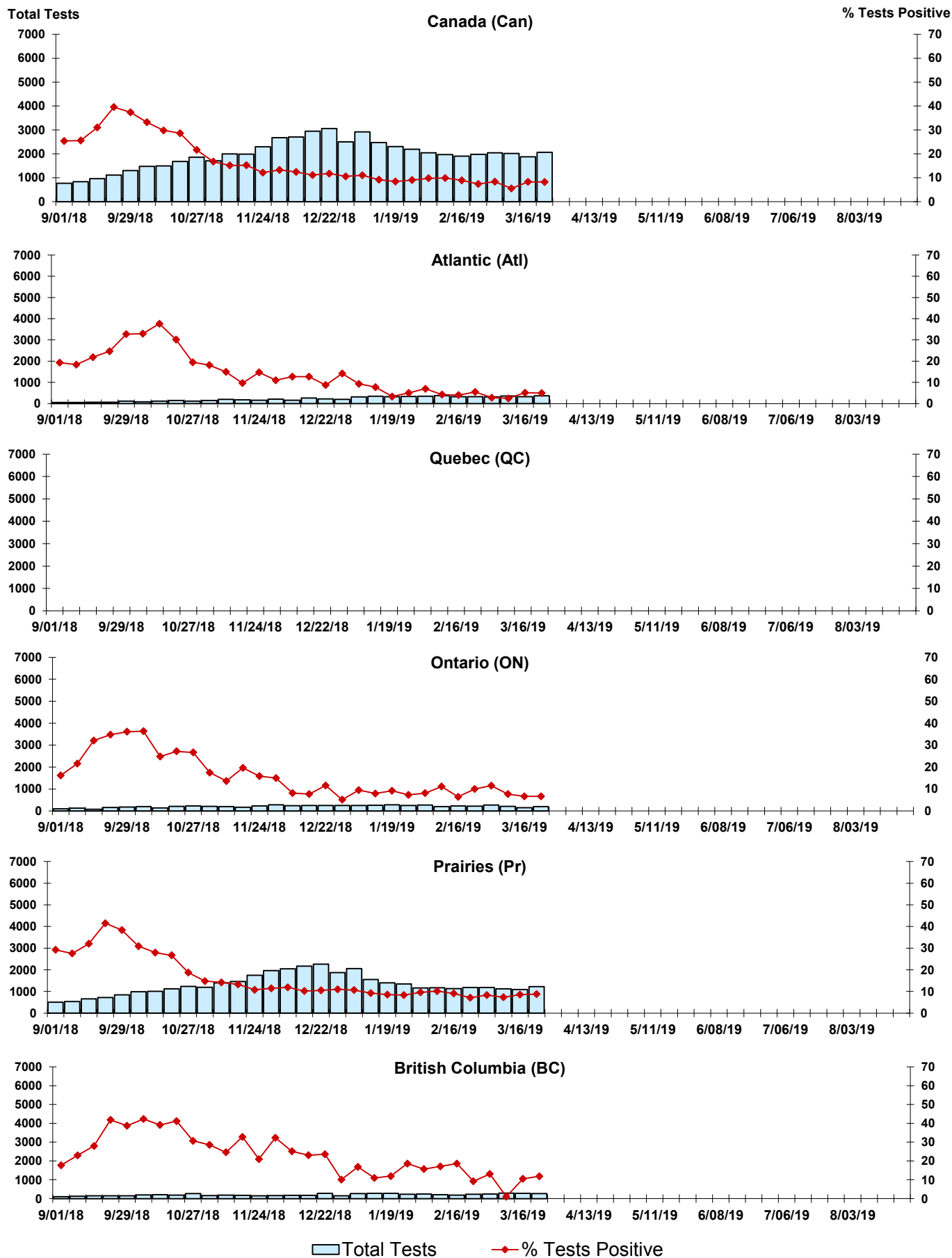
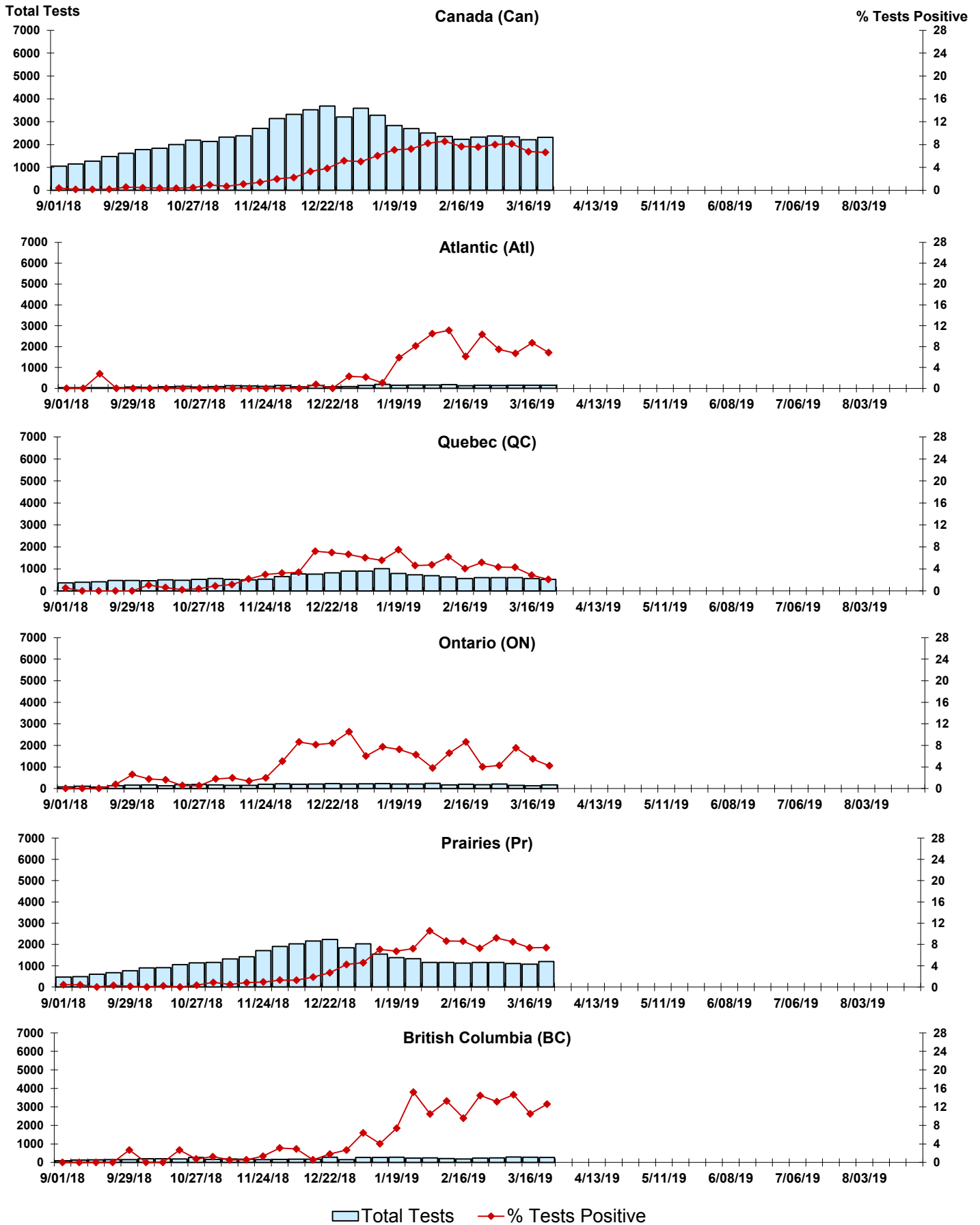


Figure 8: Positive Coronavirus (coron) Tests (%) in Canada by Region by Week of Report



Abbreviations:

A(H1N1)pdm09: Influenza A(H1N1)pdm09

A(H3): Influenza A(H3N2)

A (UnS): Influenza A (Unsubtyped)

Adeno: Adenovirus

CHEO: Children's Hospital of Eastern Ontario

Coron: Coronavirus

Entero: Enterovirus

hMPV: human metapneumovirus

HSC: Health Sciences Centre

N.A.: Not Applicable

P.H.L.: Public Health Laboratory

P.H.O.L.: Public Health Ontario Laboratory

PIV: Parainfluenza

Rhino: Rhinovirus

RSV: Respiratory syncytial virus

UHN: University Health Network

Notes:

Specimens from Yukon (YT), Northwest Territories (NT) and Nunavut (NU) are sent to reference laboratories in other provinces. Results reported for the Territories reflect the number of specimens that are identified as originating from YT, NT or NU.

Delays in the reporting of data may cause data to change retrospectively.

Due to reporting delays, the sum of weekly report totals do not add up to cumulative totals.