

Respiratory Virus Detections in Canada

Respiratory Virus Report, Week 15 - ending April 13, 2019

The Respiratory Virus Detection Surveillance System collects data from select laboratories across Canada on the number of tests performed and the number of tests positive for influenza and other respiratory viruses. Data are reported on a weekly basis year-round to the Centre for Immunization and Respiratory Infectious Diseases (CIRID), Public Health Agency of Canada. These data are also summarized in the weekly FluWatch report.

Table 1: Respiratory Virus Detections/Isolations for the week ending April 13, 2019 (Reporting Week 201915)

Reporting Laboratory	Flu Tested	A(H1N1)pdm09 Positive	A(H3) Positive	A(UnS) Positive	Total Flu A Positive	Total Flu B Positive	RSV Tested	RSV Positive	PIV Tested	PIV 1 Positive	PIV 2 Positive	PIV 3 Positive	PIV 4 Positive	Other PIV Positive	Adeno Tested	Adeno Positive	hMPV Tested	hMPV Positive	Entero/Rhino Tested	Entero/Rhino Positive	Coron Tested	Coron Positive
Newfoundland	326	0	0	97	97	0	326	16	326	0	5	9	0	0	326	2	326	32	326	11	N.A.	N.A.
Prince Edward Island	50	1	7	0	8	0	50	7	0	0	0	0	0	0	0	0	9	1	9	0	0	0
Nova Scotia	148	0	0	29	29	1	148	16	15	0	0	1	0	0	15	0	15	1	15	2	15	0
New Brunswick	443	0	0	50	50	42	443	40	120	0	0	9	1	0	120	2	120	5	120	14	120	8
Atlantic	967	1	7	176	184	43	967	79	461	0	5	19	1	0	461	4	470	39	470	27	135	8
Région Nord-Est	325	0	0	38	38	4	275	25	0	0	0	0	0	0	0	0	0	0	N.A.	N.A.	0	0
Québec-Chaudière-Appalaches	408	0	0	68	68	4	436	19	70	1	0	5	0	0	82	3	61	2	N.A.	N.A.	58	2
Centre-du-Québec	549	0	0	104	104	4	478	27	0	0	0	0	0	0	0	0	0	0	N.A.	N.A.	0	0
Montréal-Laval	1063	0	0	109	109	27	1056	41	531	6	1	32	1	0	531	17	518	37	N.A.	N.A.	518	8
Ouest du Québec	294	0	0	50	50	6	283	15	0	0	0	0	0	0	0	0	0	0	N.A.	N.A.	0	0
Montérégie	254	0	0	31	31	1	254	9	0	0	0	0	0	0	0	0	0	0	N.A.	N.A.	0	0
Province of Québec	2893	0	0	400	400	46	2782	136	601	7	1	37	1	0	613	20	579	39	N.A.	N.A.	576	10
Ottawa P.H.L.	17	0	2	0	2	1	17	0	1	0	0	0	0	0	1	1	1	0	0	0	0	0
CHEO - Ottawa	232	0	0	37	37	2	232	13	22	0	0	2	0	0	22	0	22	0	22	3	21	2
Kingston P.H.L.	12	0	2	0	2	2	12	0	5	0	1	1	0	0	5	1	5	0	0	0	0	0
UHN / Mount Sinai Hospital	297	0	4	18	22	4	297	5	14	0	0	2	0	0	0	0	14	0	N.A.	N.A.	N.A.	N.A.
P.H.O.L. - Toronto	305	6	31	4	41	5	294	11	219	1	1	7	0	0	219	2	211	11	8	0	0	0
Sick Kids Hospital - Toronto	69	0	5	2	7	5	60	1	60	1	0	4	0	0	60	4	60	6	60	10	60	1
Sunnybrook & Women's College HSC	77	0	10	0	10	0	77	0	77	1	0	1	0	0	77	0	77	6	77	5	77	3
Sault Ste. Marie P.H.L.	8	0	2	0	2	0	6	0	6	0	0	0	0	0	6	0	6	0	0	0	0	0
Timmins P.H.L.	6	0	2	0	2	0	4	0	4	0	0	0	0	0	4	0	4	0	0	0	0	0
St. Joseph's - London	168	0	0	23	23	0	168	2	48	0	0	4	0	0	48	0	48	1	21	2	21	1
London P.H.L.	113	1	15	4	20	1	113	8	78	0	0	0	0	0	78	2	76	5	2	0	0	0
Orillia P.H.L.	28	0	6	1	7	0	28	1	10	0	0	1	0	0	10	0	10	1	0	0	0	0
Thunder Bay P.H.L.	19	0	4	3	7	0	12	2	10	0	0	0	0	0	10	1	9	0	1	0	0	0
Sudbury P.H.L.	19	0	2	0	2	0	18	0	15	1	0	0	0	0	15	0	12	0	3	0	0	0
Hamilton P.H.L.	111	2	17	1	20	0	102	1	86	1	0	3	0	0	86	1	83	5	3	0	0	0
Peterborough P.H.L.	40	1	7	2	10	1	40	0	17	0	0	1	0	0	17	0	17	1	0	0	0	0
Province of Ontario	1521	10	109	95	214	21	1480	44	672	5	2	26	0	0	658	12	655	36	211	20	193	8
Manitoba	294	3	11	7	21	1	266	17	165	1	1	10	0	0	165	4	102	6	165	18	102	5
Regina	162	4	11	3	18	4	162	27	162	0	0	8	0	0	162	3	162	9	162	20	162	13
Saskatoon	196	0	0	28	28	1	196	8	196	0	0	0	0	13	196	0	196	10	196	19	196	4
Province of Saskatchewan	358	4	11	31	46	5	358	35	358	0	0	8	0	13	358	3	358	19	358	39	358	17
Province of Alberta	906	5	110	32	147	21	747	0	747	1	4	54	5	0	747	12	747	29	747	86	747	54
Prairies	1558	12	132	70	214	27	1371	52	1270	2	5	72	5	13	1270	19	1207	54	1270	143	1207	76
British Columbia	688	78	243	69	390	19	688	34	328	0	0	24	5	0	328	2	328	3	259	22	259	17
Yukon	12	1	1	1	3	0	12	0	N.A.	N.A.	N.A.	N.A.	N.A.	N.A.	N.A.	N.A.	N.A.	N.A.	N.A.	N.A.	N.A.	N.A.
Northwest Territories	9	2	0	0	2	0	9	0	9	0	0	0	0	0	9	0	9	0	9	2	9	0
Nunavut	8	0	0	0	0	0	8	0	8	1	0	1	0	0	8	0	8	0	8	0	8	1
Territories	29	3	1	1	5	0	29	0	17	1	0	1	0	0	17	0	17	0	17	2	17	1
CANADA	7656	104	492	811	1407	156	7317	345	3349	15	13	179	12	13	3347	57	3256	171	2227	214	2387	120

Specimens from Yukon (YT), Northwest Territories (NT) and Nunavut (NU) are sent to reference laboratories in other provinces and reported results reflect specimens identified as originating from YT, NT or NU.

Results from British Columbia comprise of specimens from the following sites: BC Children's and Women's Hospital, Powell River Hospital, St. Paul's Hospital, Vancouver General Hospital, Victoria General Hospital, Interior Health Authority sites and Northern Health Authority sites.

Delays in the reporting of data may cause data to change retrospectively.

Table 2: Respiratory Virus Detections/Isolations for the period August 26, 2018 - April 13, 2019 (Reporting Weeks 201835-201915)

Reporting Laboratory	Flu Tested	A(H1N1)pdm09 Positive	A(H3) Positive	A(UnS) Positive	Total Flu A Positive	Total Flu B Positive	RSV Tested	RSV Positive	PIV Tested	PIV 1 Positive	PIV 2 Positive	PIV 3 Positive	PIV 4 Positive	Other PIV Positive	Adeno Tested	Adeno Positive	hMPV Tested	hMPV Positive	Entero/Rhino Tested	Entero/Rhino Positive	Coron Tested	Coron Positive
Newfoundland	4298	1	0	918	919	3	4298	427	4298	0	56	121	0	0	4298	35	4298	134	4298	297	N.A.	N.A.
Prince Edward Island	1157	220	50	1	271	0	1155	133	72	1	0	2	3	0	67	5	76	3	76	22	67	3
Nova Scotia	3496	0	0	738	738	14	3502	349	488	0	4	21	2	0	488	0	488	8	488	63	488	9
New Brunswick	12157	230	34	2399	2663	174	12156	1115	3068	0	16	48	40	0	3068	119	3068	118	3068	325	3068	155
Atlantic	21108	451	84	4056	4591	191	21111	2024	7926	1	76	192	45	0	7921	159	7930	263	7930	707	3623	167
Région Nord-Est	8122	0	0	1510	1510	30	6391	590	0	0	0	0	0	0	0	0	0	0	N.A.	N.A.	0	0
Québec-Chaudière-Appalaches	13980	0	0	3010	3010	28	14176	1481	2616	5	32	35	9	0	2715	89	2198	31	N.A.	N.A.	2031	25
Centre-du-Québec	16330	0	0	3379	3379	153	13061	1543	0	0	0	0	0	0	36	0	0	0	N.A.	N.A.	0	0
Montréal-Laval	35595	0	0	4285	4285	139	34492	2907	18408	70	150	187	36	0	18408	536	18046	360	N.A.	N.A.	17995	695
Ouest du Québec	11640	0	0	2555	2555	65	10627	1376	0	0	0	0	0	0	0	0	0	0	N.A.	N.A.	0	0
Montérégie	7911	0	0	1305	1306	26	7501	658	0	0	0	0	0	0	0	0	0	0	N.A.	N.A.	0	0
Province of Québec	93578	0	0	16044	16045	441	86248	8555	21024	75	182	222	45	0	21159	625	20244	391	N.A.	N.A.	20026	720
Ottawa P.H.L.	878	91	62	19	172	3	873	87	477	0	3	4	0	0	477	1	458	7	24	0	0	0
CHEO - Ottawa	7109	0	0	778	778	18	7109	903	762	3	10	15	6	0	763	23	762	14	755	190	737	37
Kingston P.H.L.	845	66	63	11	140	10	845	61	582	0	4	7	0	0	582	1	558	6	77	0	0	0
UHN / Mount Sinai Hospital	10297	5	15	700	720	34	10297	466	560	1	9	8	3	0	0	0	517	4	N.A.	N.A.	N.A.	N.A.
P.H.O.L. - Toronto	12095	862	592	90	1544	51	11690	510	9395	14	60	56	0	0	9396	46	9121	118	441	0	0	0
Sick Kids Hospital - Toronto	2324	111	40	118	269	25	1951	216	1951	14	35	32	25	0	1951	76	1951	72	1951	459	1951	126
Sunnybrook & Women's College HSC	2264	71	84	10	165	6	2264	62	2264	5	5	10	1	0	2264	1	2264	67	2264	185	2264	88
Sault Ste. Marie P.H.L.	393	47	38	3	88	0	326	14	300	0	3	0	0	0	300	0	294	5	10	0	0	0
Timmins P.H.L.	336	57	6	1	64	0	272	6	272	0	7	3	0	0	272	0	265	1	15	0	0	0
St. Joseph's - London	3997	3	0	501	504	3	3865	352	1305	4	6	20	15	0	1305	29	1305	43	936	152	727	19
London P.H.L.	3639	315	171	61	547	12	3602	320	2482	4	22	16	0	0	2482	18	2397	32	148	0	0	0
Orillia P.H.L.	1021	66	44	21	131	1	1021	127	708	2	2	11	0	0	708	1	695	10	33	0	0	0
Thunder Bay P.H.L.	389	29	38	8	75	0	305	13	296	1	1	11	0	0	295	4	280	7	25	0	0	0
Sudbury P.H.L.	782	47	13	0	60	0	727	30	703	3	4	1	0	0	703	3	665	9	65	0	0	0
Hamilton P.H.L.	3323	231	154	31	416	6	3234	130	2575	10	14	32	0	0	2575	18	2531	36	111	0	0	0
Peterborough P.H.L.	992	44	56	21	121	3	989	47	766	2	4	2	0	0	766	0	757	8	12	0	0	0
Province of Ontario	50684	2045	1376	2373	5794	172	49370	3344	25398	63	189	228	50	0	24839	221	24820	439	7071	996	5890	280
Manitoba	9005	308	64	724	1096	20	8655	539	3743	3	13	59	12	0	3743	37	2352	73	3743	402	2386	115
Regina	7743	1422	112	153	1687	61	7743	503	9676	4	60	168	35	0	7743	112	7743	129	7743	1359	7743	227
Saskatoon	5770	0	0	827	827	22	5770	417	5770	2	7	22	13	48	5770	37	5770	96	5770	341	5770	69
Province of Saskatchewan	13513	1422	112	980	2514	83	13513	920	15446	6	67	190	48	48	13513	149	13513	225	13513	1700	13513	296
Province of Alberta	32104	3586	786	2052	6424	209	25886	0	25886	26	222	487	230	0	25886	361	25886	686	25886	3799	25886	1227
Prairies	54622	5316	962	3756	10034	312	48054	1459	45075	35	302	736	290	48	43142	547	41751	984	43142	5901	41785	1638
British Columbia	23136	3098	1371	1603	6072	195	23099	1466	9362	13	67	290	100	0	9362	132	9362	67	7017	1398	7017	425
Yukon	320	54	12	29	95	0	320	18	N.A.	N.A.	N.A.	N.A.	N.A.	N.A.	N.A.	N.A.	N.A.	N.A.	N.A.	N.A.	N.A.	N.A.
Northwest Territories	715	172	2	0	174	1	711	0	711	2	0	27	4	0	711	21	711	6	711	119	711	46
Nunavut	89	20	0	0	20	0	89	0	89	2	0	2	0	0	89	12	88	0	89	23	88	8
Territories	1124	246	14	29	289	1	1120	18	800	4	0	29	4	0	800	33	799	6	800	142	799	54
CANADA	244252	11156	3807	27861	42825	1312	229002	16866	109585	191	816	1697	534	48	107223	1717	104906	2150	65960	9144	79140	3284

Specimens from YT, NT and NU are sent to reference laboratories in other provinces and reported results reflect specimens identified as originating from YT, NT or NU.

Results from British Columbia comprise of specimens from the following sites: BC Children's and Women's Hospital, Powell River Hospital, St. Paul's Hospital, Vancouver General Hospital, Victoria General Hospital, Interior Health Authority sites and Northern Health Authority sites.

Delays in the reporting of data may cause data to change retrospectively.

Due to reporting delays, the sum of weekly report totals do not add up to cumulative totals.

Figure 1: Number positive laboratory tests for other respiratory viruses by report week, Canada, 2018-19

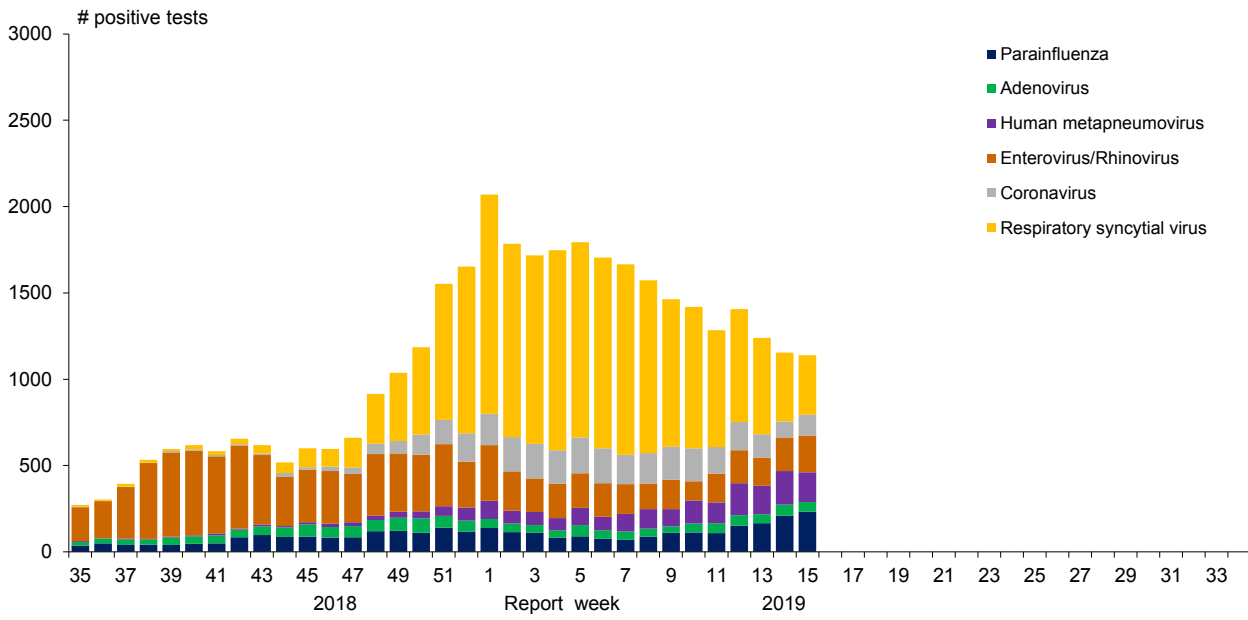


Figure 2: Positive Influenza Tests (%) in Canada by Region by Week of Report

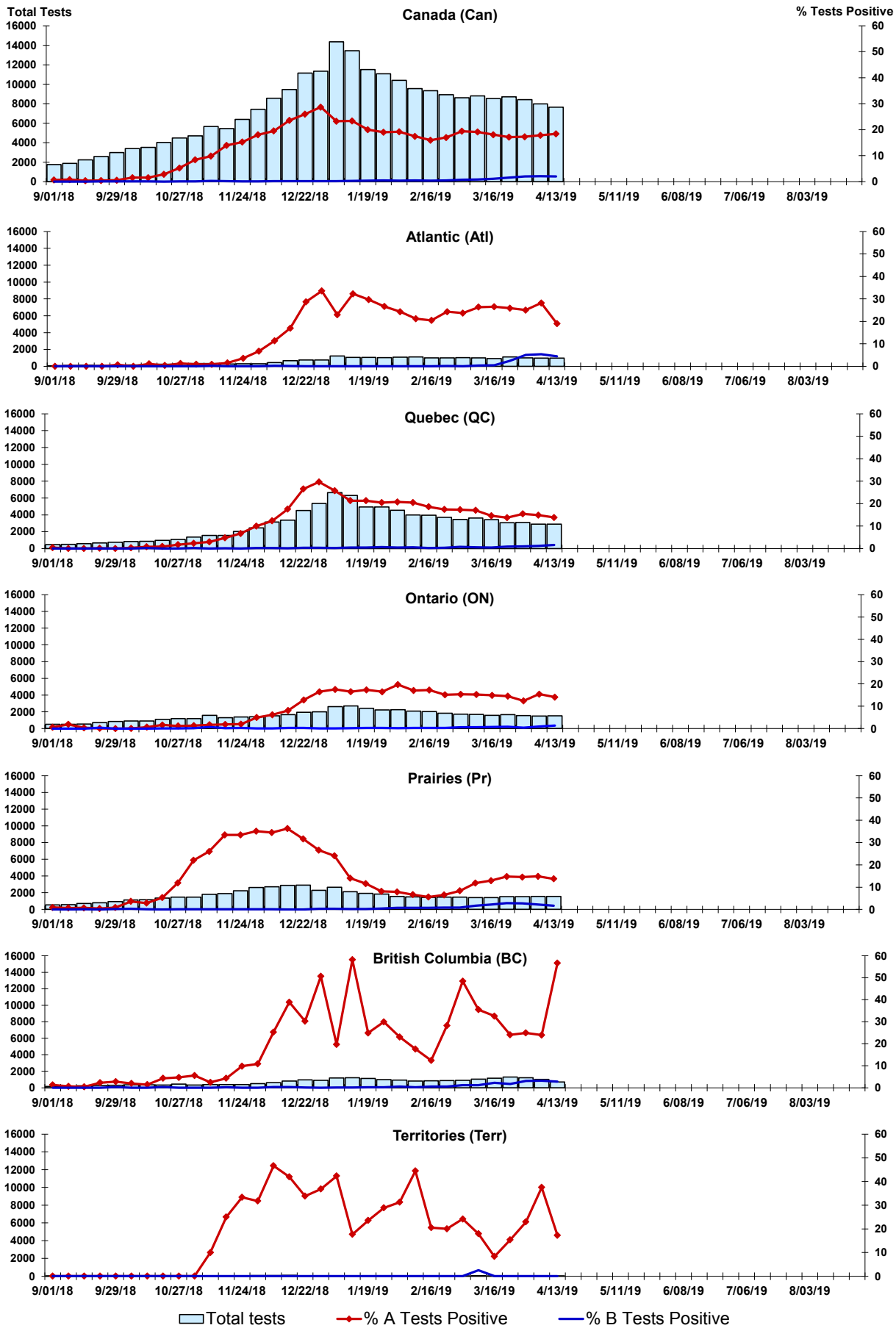


Figure 3: Positive Respiratory syncytial virus (RSV) Tests (%) in Canada by Region by Week of Report

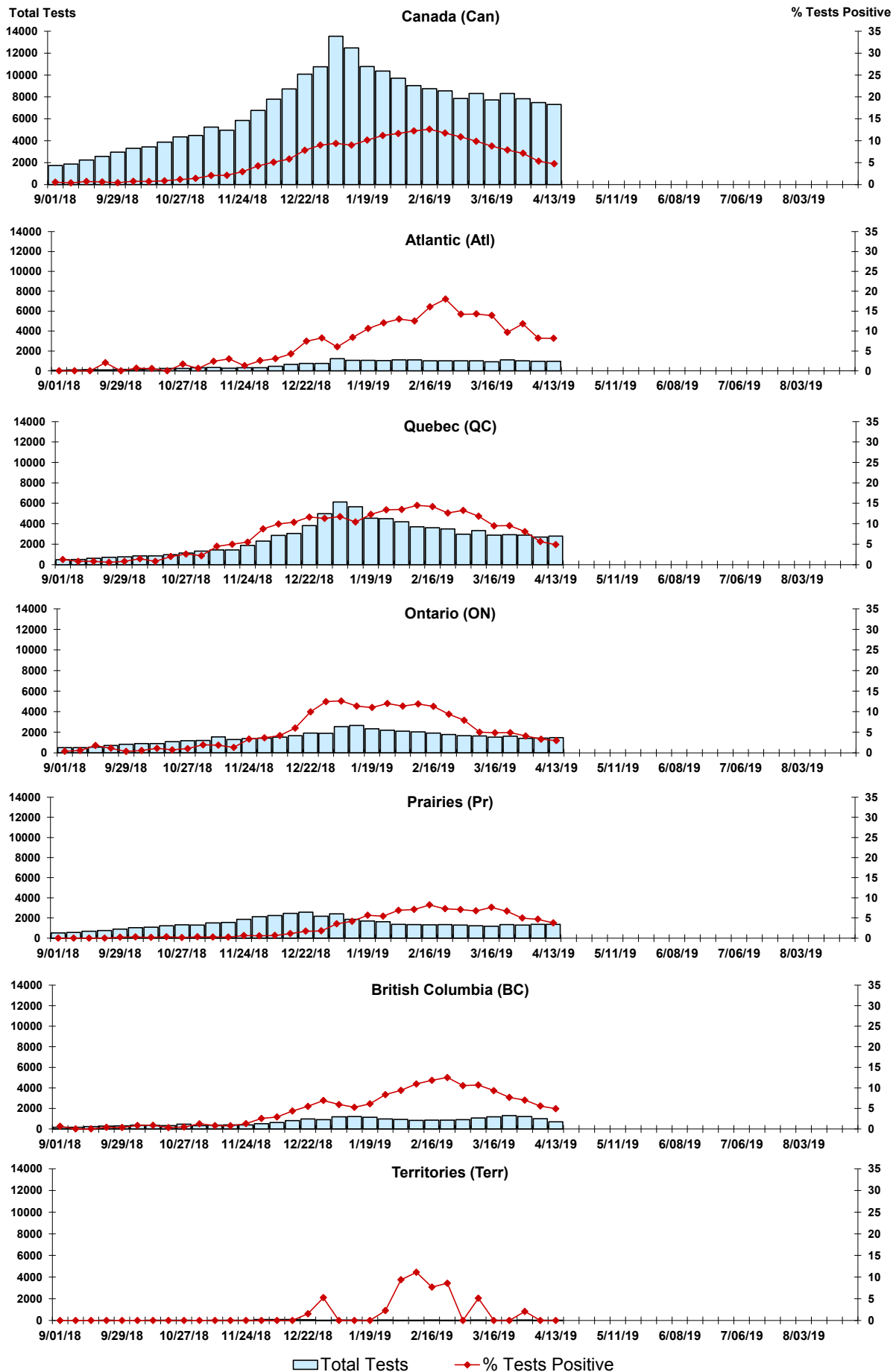


Figure 4: Positive Parainfluenza (PIV) Tests (%) in Canada by Region by Week of Report

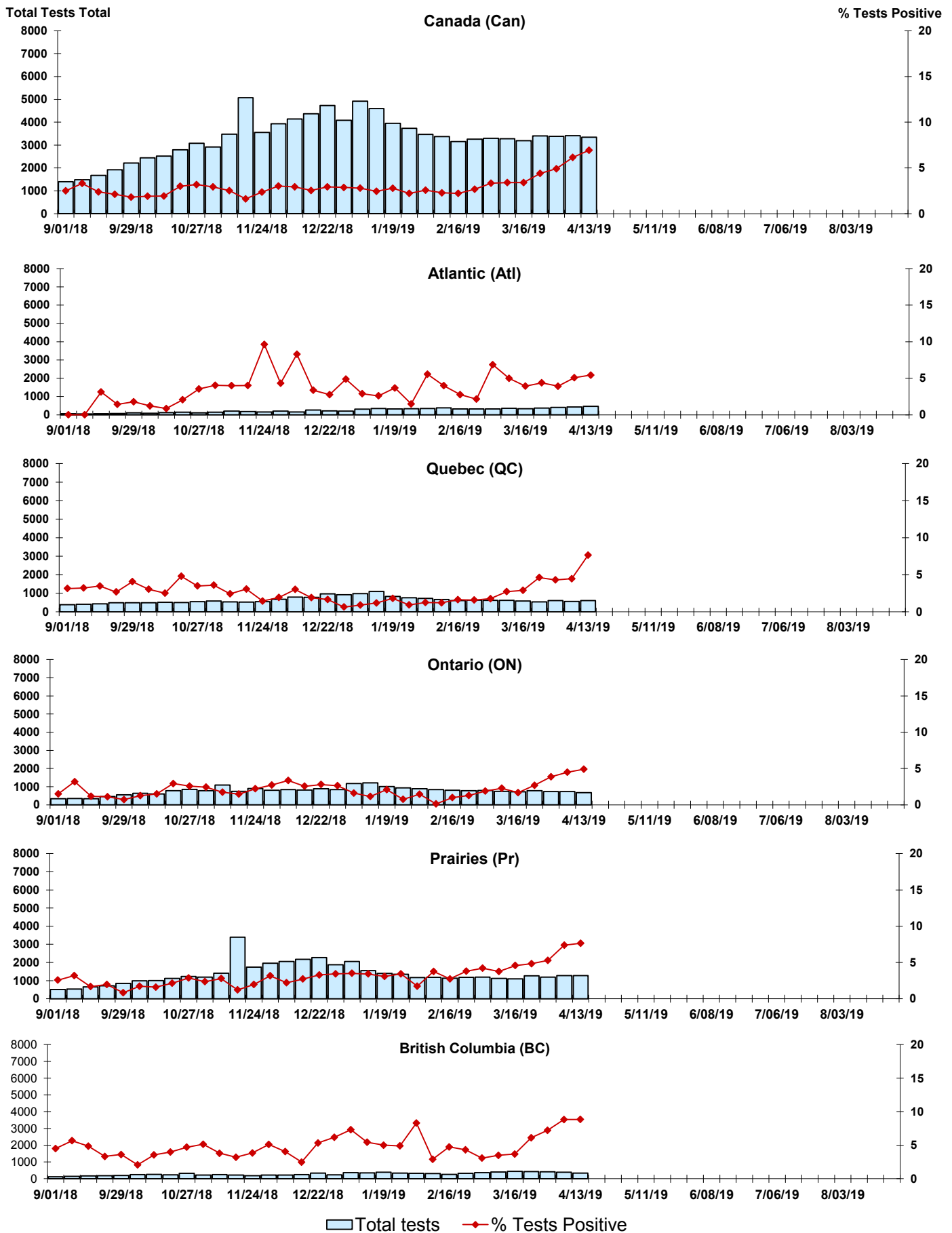


Figure 5: Positive Adenovirus (adeno) Tests (%) in Canada by Region by Week of Report

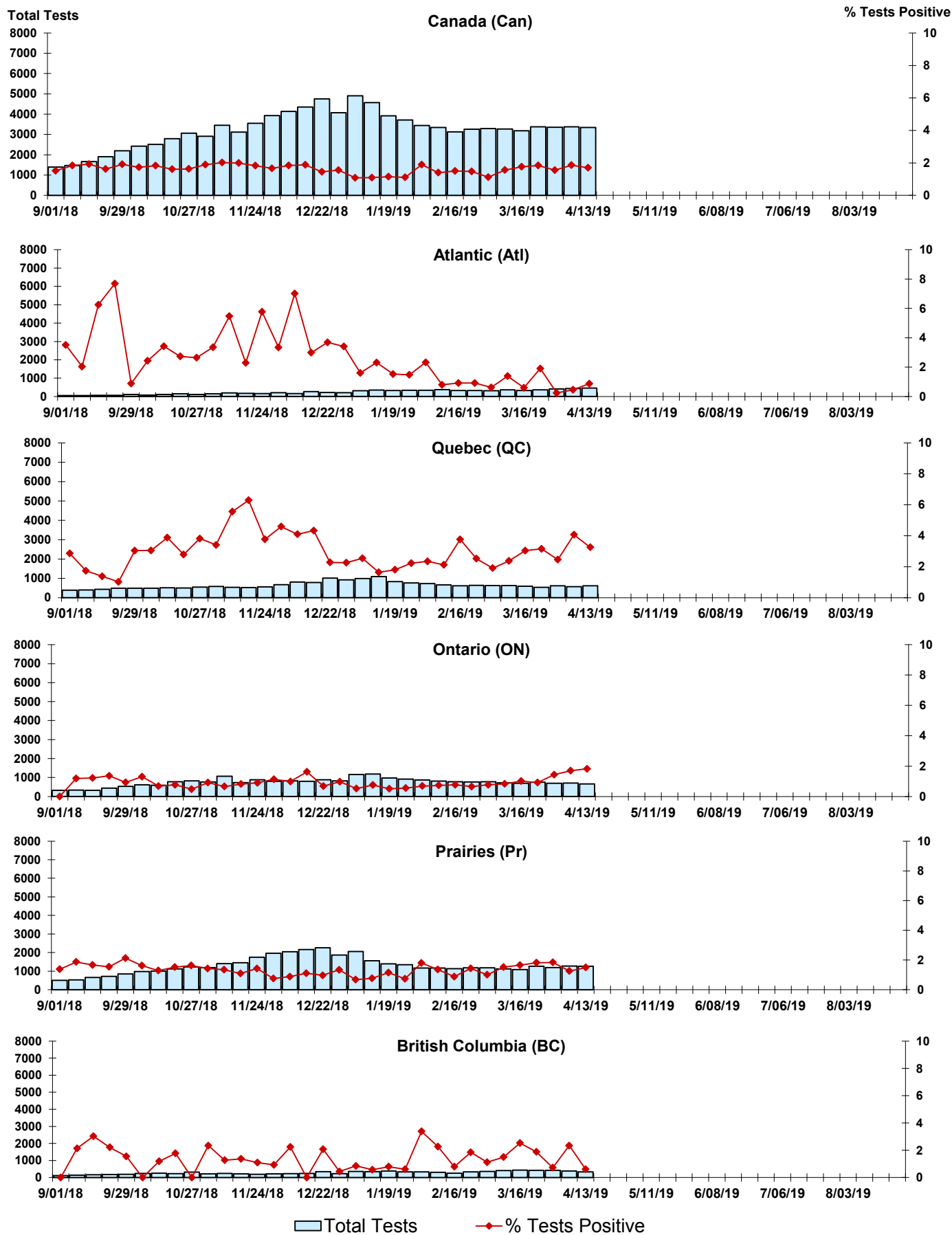


Figure 6: Positive human metapneumovirus (hMPV) Tests (%) in Canada by Region by Week of Report

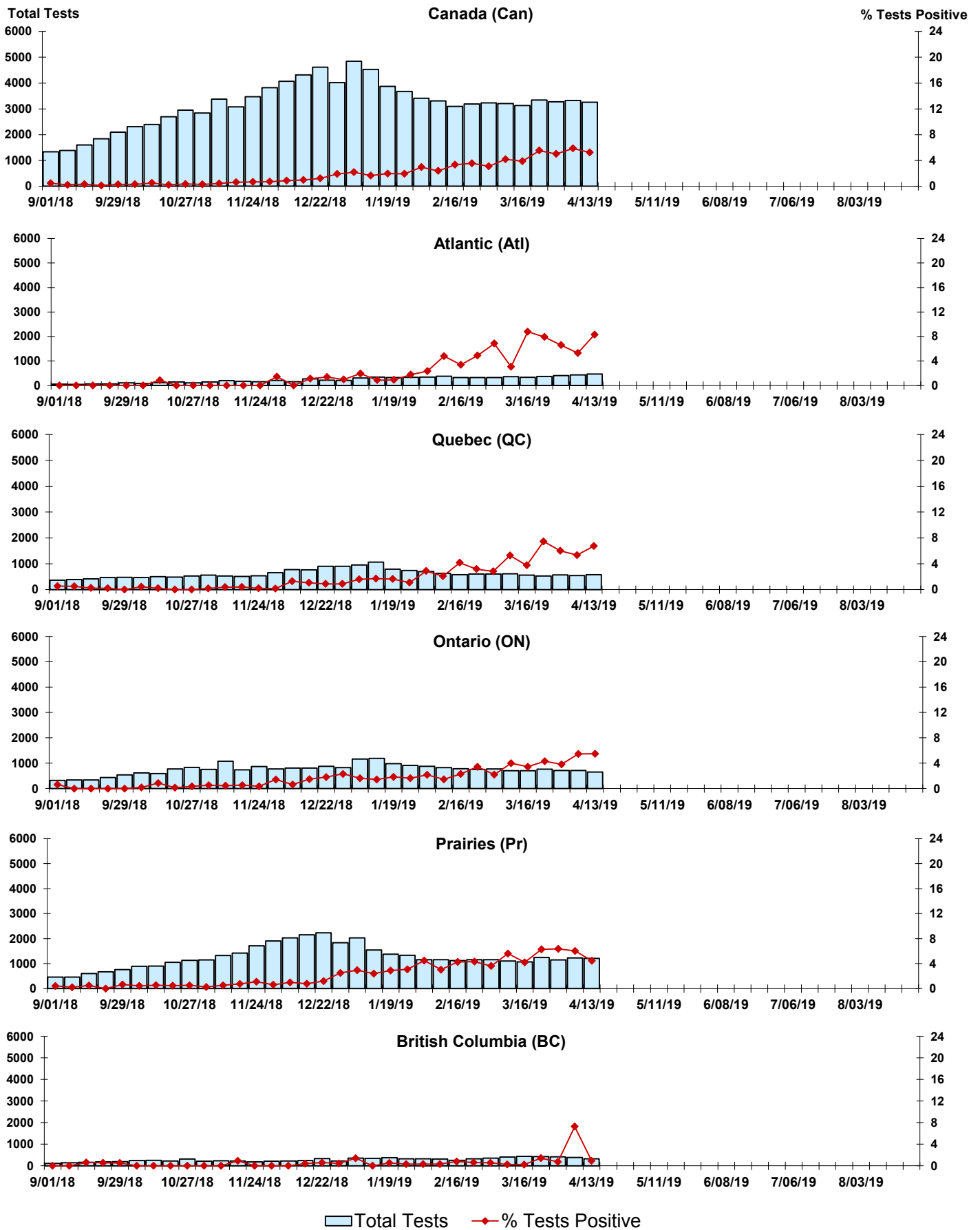


Figure 7: Positive Enterovirus/Rhinovirus (entero/rhino) Tests (%) in Canada by Region by Week of Report

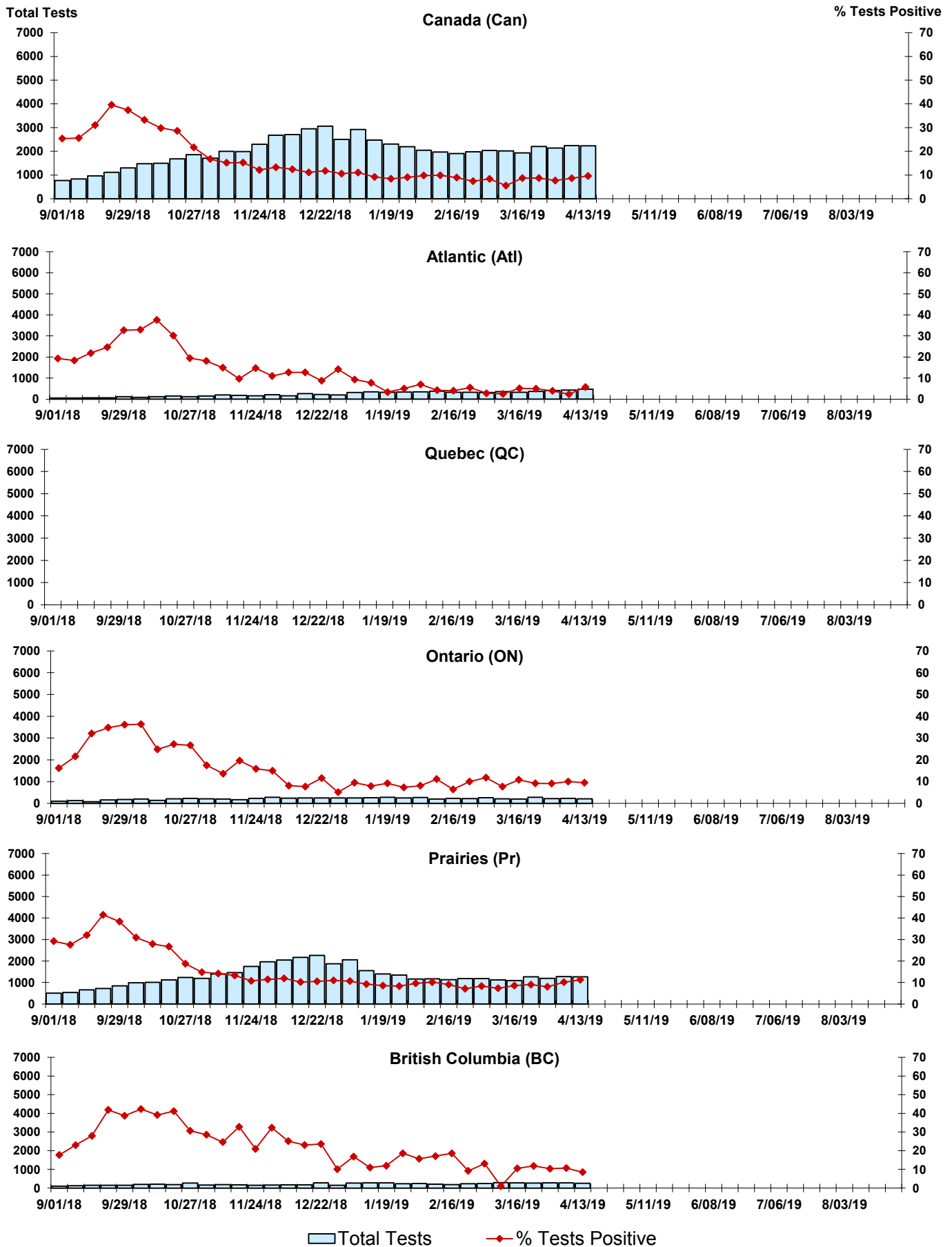
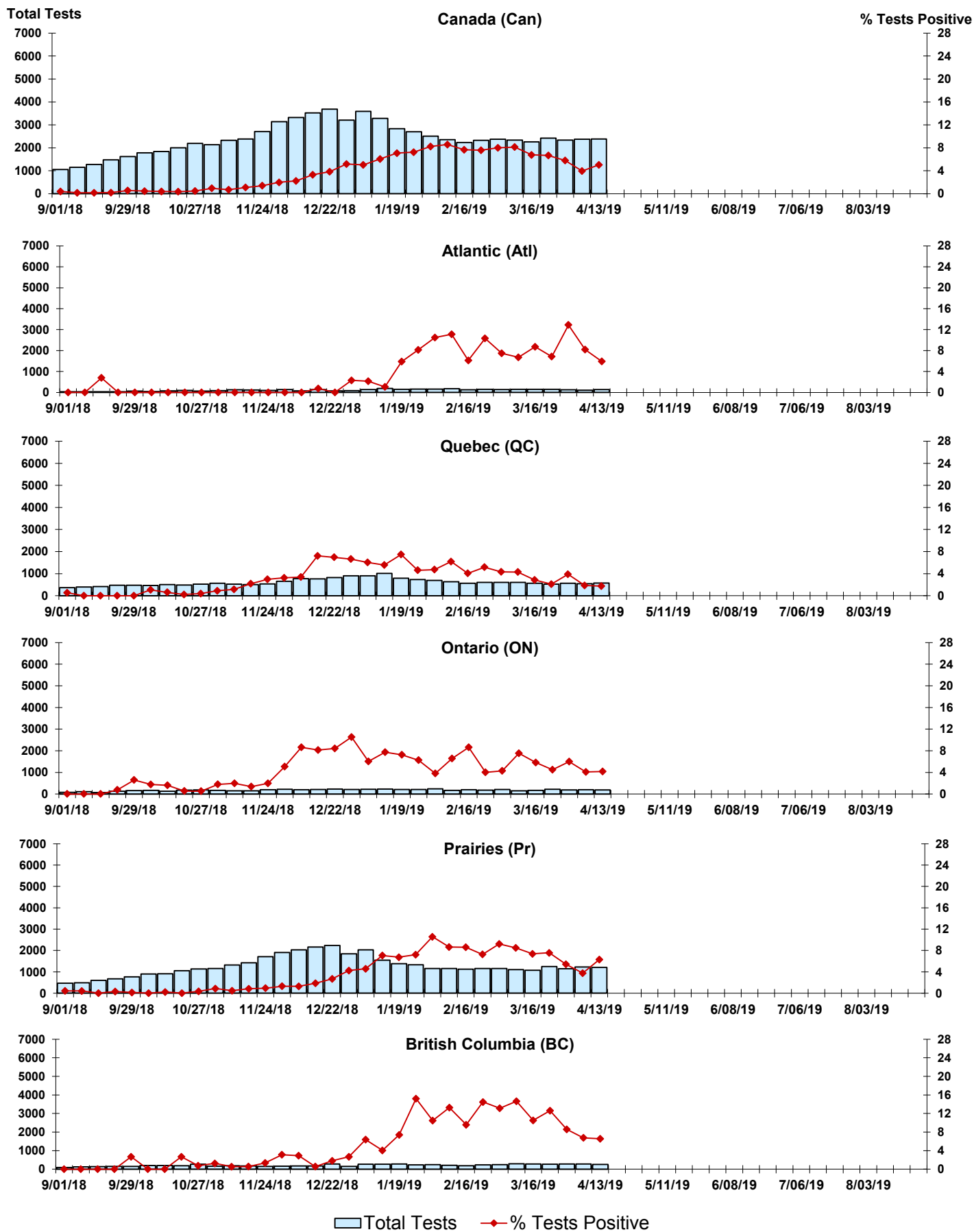


Figure 8: Positive Coronavirus (coron) Tests (%) in Canada by Region by Week of Report



Abbreviations:

A(H1N1)pdm09: Influenza A(H1N1)pdm09

A(H3): Influenza A(H3N2)

A (UnS): Influenza A (Unsubtyped)

Adeno: Adenovirus

CHEO: Children's Hospital of Eastern Ontario

Coron: Coronavirus

Entero: Enterovirus

hMPV: human metapneumovirus

HSC: Health Sciences Centre

N.A.: Not Applicable

P.H.L.: Public Health Laboratory

P.H.O.L.: Public Health Ontario Laboratory

PIV: Parainfluenza

Rhino: Rhinovirus

RSV: Respiratory syncytial virus

UHN: University Health Network

Notes:

Specimens from Yukon (YT), Northwest Territories (NT) and Nunavut (NU) are sent to reference laboratories in other provinces. Results reported for the Territories reflect the number of specimens that are identified as originating from YT, NT or NU.

Delays in the reporting of data may cause data to change retrospectively.

Due to reporting delays, the sum of weekly report totals do not add up to cumulative totals.