

Respiratory Virus Detections in Canada

Respiratory Virus Report, Week 17 - ending April 27, 2019

The Respiratory Virus Detection Surveillance System collects data from select laboratories across Canada on the number of tests performed and the number of tests positive for influenza and other respiratory viruses. Data are reported on a weekly basis year-round to the Centre for Immunization and Respiratory Infectious Diseases (CIRID), Public Health Agency of Canada. These data are also summarized in the weekly FluWatch report.

Table 1: Respiratory Virus Detections/Isolations for the week ending April 27, 2019 (Reporting Week 201917)

Reporting Laboratory	Flu Tested	A(H1N1)pdm09 Positive	A(H3) Positive	A(UnS) Positive	Total Flu A Positive	Total Flu B Positive	RSV Tested	RSV Positive	PIV Tested	PIV 1 Positive	PIV 2 Positive	PIV 3 Positive	PIV 4 Positive	Other PIV Positive	Adeno Tested	Adeno Positive	hMPV Tested	hMPV Positive	Entero/Rhino Tested	Entero/Rhino Positive	Coron Tested	Coron Positive
Newfoundland	195	0	0	30	30	0	195	14	195	6	0	13	0	0	195	0	195	20	195	5	N.A.	N.A.
Prince Edward Island	26	0	4	0	4	1	26	1	1	0	0	0	0	0	1	0	1	0	1	0	1	0
Nova Scotia	113	0	0	15	15	2	113	10	8	0	0	2	0	0	8	0	8	0	8	1	8	0
New Brunswick	443	0	0	59	59	36	443	24	88	0	0	9	0	0	88	0	88	7	88	3	88	3
Atlantic	777	0	4	104	108	39	777	49	292	6	0	24	0	0	292	0	292	27	292	9	97	3
Région Nord-Est	222	0	0	13	13	4	188	24	0	0	0	0	0	0	0	0	0	0	N.A.	N.A.	0	0
Québec-Chaudière-Appalaches	419	0	0	29	29	7	431	22	68	0	0	6	0	0	67	2	57	4	N.A.	N.A.	57	0
Centre-du-Québec	459	0	0	81	81	15	402	10	0	0	0	0	0	0	0	0	0	0	N.A.	N.A.	0	0
Montréal-Laval	920	0	0	79	79	36	910	17	435	2	1	23	1	0	435	10	428	18	N.A.	N.A.	428	4
Ouest du Québec	206	0	0	22	22	16	195	2	0	0	0	0	0	0	0	0	0	0	N.A.	N.A.	0	0
Montréal	219	0	0	13	13	3	219	4	0	0	0	0	0	0	0	0	0	0	N.A.	N.A.	0	0
Province of Québec	2445	0	0	237	237	81	2345	79	503	2	1	29	1	0	502	12	485	22	N.A.	N.A.	485	4
Ottawa P.H.L.	21	0	2	1	3	0	21	1	8	0	0	0	0	0	8	0	6	0	2	0	0	0
CHEO - Ottawa	185	0	0	19	19	4	185	5	21	0	0	0	0	0	21	1	21	0	21	4	21	1
Kingston P.H.L.	26	1	7	0	8	0	26	0	16	0	0	1	0	0	16	0	13	1	4	0	0	0
UHN / Mount Sinai Hospital	279	0	0	10	10	9	279	1	14	0	0	1	0	0	0	0	14	1	N.A.	N.A.	N.A.	N.A.
P.H.O.L. - Toronto	305	5	16	5	26	4	298	5	243	1	1	6	0	0	243	3	239	9	4	0	0	0
Sick Kids Hospital - Toronto	77	1	1	1	3	2	55	1	55	0	0	9	0	0	55	1	55	7	55	12	55	3
Sunnybrook & Women's College HSC	66	0	6	0	6	0	66	0	66	0	0	2	0	0	66	0	66	4	66	3	66	1
Sault Ste. Marie P.H.L.	9	0	2	0	2	0	8	3	5	0	0	0	0	0	5	0	5	0	0	0	0	0
Timmins P.H.L.	7	1	1	0	2	0	6	1	4	0	0	0	0	0	4	0	4	0	0	0	0	0
St. Joseph's - London	121	0	0	10	10	1	125	3	49	0	0	5	0	0	49	1	49	1	30	4	30	0
London P.H.L.	102	0	7	1	8	1	102	3	84	0	1	7	0	0	84	0	81	2	3	0	0	0
Orillia P.H.L.	41	0	7	0	7	0	41	0	18	0	0	0	0	0	18	0	18	0	0	0	0	0
Thunder Bay P.H.L.	11	0	1	0	1	0	11	2	8	0	0	0	0	0	8	0	8	0	0	0	0	0
Sudbury P.H.L.	18	0	1	0	1	0	16	1	16	0	0	1	0	0	16	0	16	0	0	0	0	0
Hamilton P.H.L.	138	0	13	0	13	3	135	4	114	0	1	9	0	0	114	1	113	4	1	0	0	0
Peterborough P.H.L.	32	0	15	0	15	0	32	0	8	0	0	2	0	0	8	0	8	0	0	0	0	0
Province of Ontario	1438	8	79	47	134	24	1406	30	729	1	3	43	0	0	715	7	716	29	200	24	186	5
Manitoba	289	5	9	4	18	12	256	17	155	1	1	15	0	0	155	4	90	4	155	25	90	3
Regina	138	1	11	0	12	8	138	17	138	0	1	13	0	0	138	4	138	6	138	30	138	7
Saskatoon	149	0	0	26	26	3	149	11	149	0	0	10	0	0	149	5	149	12	149	19	149	8
Province of Saskatchewan	287	1	11	26	38	11	287	28	287	0	1	23	0	0	287	9	287	18	287	49	287	15
Province of Alberta	750	15	85	27	127	16	645	0	645	2	3	62	2	0	645	16	645	28	645	89	645	26
Prairies	1326	21	105	57	183	39	1188	45	1087	3	5	100	2	0	1087	29	1022	50	1087	163	1022	44
British Columbia	394	14	46	37	97	7	394	14	237	0	1	24	3	0	237	1	237	0	237	48	237	13
Yukon	19	8	0	2	10	0	19	0	N.A.	N.A.	N.A.	N.A.	N.A.	N.A.	N.A.	N.A.	N.A.	N.A.	N.A.	N.A.	N.A.	N.A.
Northwest Territories	9	1	0	0	1	0	9	0	9	0	0	0	0	0	9	0	9	1	9	4	9	0
Nunavut	5	0	0	0	0	0	5	0	5	1	0	0	0	0	5	2	5	0	5	4	5	0
Territories	33	9	0	2	11	0	33	0	14	1	0	0	0	0	14	2	14	1	14	8	14	0
CANADA	6413	52	234	484	770	190	6143	217	2862	13	10	220	6	0	2847	51	2766	129	1830	252	2041	69

Specimens from Yukon (YT), Northwest Territories (NT) and Nunavut (NU) are sent to reference laboratories in other provinces and reported results reflect specimens identified as originating from YT, NT or NU.

Results from British Columbia comprise of specimens from the following sites: BC Children's and Women's Hospital, Powell River Hospital, St. Paul's Hospital, Vancouver General Hospital, Victoria General Hospital, Interior Health Authority sites and Northern Health Authority sites.

Delays in the reporting of data may cause data to change retrospectively.

Table 2: Respiratory Virus Detections/Isolations for the period August 26, 2018 - April 27, 2019 (Reporting Weeks 201835-201917)

Reporting Laboratory	Flu Tested	A(H1N1)pdm09 Positive	A(H3) Positive	A(UnS) Positive	Total Flu A Positive	Total Flu B Positive	RSV Tested	RSV Positive	PIV Tested	PIV 1 Positive	PIV 2 Positive	PIV 3 Positive	PIV 4 Positive	Other PIV Positive	Adeno Tested	Adeno Positive	hMPV Tested	hMPV Positive	Entero/Rhino Tested	Entero/Rhino Positive	Coron Tested	Coron Positive
Newfoundland	4690	1	0	1000	1001	4	4690	465	4690	6	58	143	0	0	4690	37	4690	171	4690	305	N.A.	N.A.
Prince Edward Island	1205	220	56	1	277	1	1203	136	83	1	0	2	3	0	78	5	78	3	78	22	78	3
Nova Scotia	3747	0	0	774	774	17	3753	374	505	0	4	25	2	0	505	0	505	8	505	64	505	11
New Brunswick	12984	230	34	2517	2781	245	12983	1177	3244	0	18	65	40	0	3244	120	3244	132	3244	339	3244	165
Atlantic	22626	451	90	4292	4833	267	22629	2152	8522	7	80	235	45	0	8517	162	8517	314	8517	730	3827	179
Région Nord-Est	8640	0	0	1546	1546	41	8820	647	0	0	0	0	0	0	0	0	0	0	N.A.	N.A.	0	0
Québec-Chaudière-Appalaches	14875	0	0	3097	3097	44	15093	1541	2767	5	32	48	9	0	2871	91	2324	36	N.A.	N.A.	2155	27
Centre-du-Québec	17297	0	0	3570	3570	180	13918	1565	0	0	0	0	0	0	36	0	0	0	N.A.	N.A.	0	0
Montréal-Laval	37470	0	0	4443	4443	197	36342	2947	19322	76	151	253	37	0	19322	562	18946	412	N.A.	N.A.	18895	712
Ouest du Québec	12068	0	0	2624	2624	90	11029	1386	0	0	0	0	0	0	0	0	0	0	N.A.	N.A.	0	0
Montérégie	8369	0	0	1344	1345	34	7959	669	0	0	0	0	0	0	0	0	0	0	N.A.	N.A.	0	0
Province of Québec	98719	0	0	16624	16625	586	91161	8755	22089	81	183	301	46	0	22229	653	21270	448	N.A.	N.A.	21050	739
Ottawa P.H.L.	913	91	67	21	179	3	908	88	504	0	3	4	0	0	504	1	483	9	26	0	0	0
CHEO - Ottawa	7518	0	0	821	821	25	7518	914	802	3	10	16	6	0	803	24	802	15	795	197	777	39
Kingston P.H.L.	889	67	70	11	148	11	889	61	615	0	4	12	0	0	615	1	585	7	87	0	0	0
UHN / Mount Sinai Hospital	10859	5	15	727	747	46	10859	472	583	1	9	10	3	0	0	0	540	5	N.A.	N.A.	N.A.	N.A.
P.H.O.L. - Toronto	12652	870	640	96	1606	59	12225	518	9862	15	61	67	0	0	9863	50	9576	136	463	0	0	0
Sick Kids Hospital - Toronto	2482	112	41	121	274	30	2066	218	2066	17	35	47	25	0	2066	77	2066	83	2066	487	2066	131
Sunnybrook & Women's College HSC	2390	71	95	11	177	6	2390	62	2390	5	5	13	1	0	2390	1	2390	72	2390	190	2390	94
Sault Ste. Marie P.H.L.	407	47	40	3	90	0	339	17	310	0	3	0	0	0	310	0	304	5	10	0	0	0
Timmins P.H.L.	352	58	8	1	67	0	286	7	284	0	7	3	0	0	284	0	277	1	15	0	0	0
St. Joseph's - London	4243	3	0	520	523	5	4115	356	1403	5	6	28	15	0	1403	31	1403	46	1015	157	780	20
London P.H.L.	3805	318	187	59	564	14	3767	327	2613	4	23	29	0	0	2613	18	2525	36	161	0	0	0
Orillia P.H.L.	1105	66	61	22	149	1	1105	127	763	2	2	11	0	0	763	1	750	13	34	0	0	0
Thunder Bay P.H.L.	419	29	43	8	80	0	331	15	318	1	1	11	0	0	317	4	302	9	25	0	0	0
Sudbury P.H.L.	815	47	16	0	63	0	757	32	734	3	4	2	0	0	734	3	691	10	70	0	0	0
Hamilton P.H.L.	3597	234	193	32	459	11	3500	135	2789	12	15	48	0	0	2789	21	2742	42	127	0	0	0
Peterborough P.H.L.	1051	44	75	22	141	3	1048	49	804	2	4	5	0	0	804	0	795	10	12	0	0	0
Province of Ontario	53497	2062	1551	2475	6088	214	52103	3398	26840	70	192	306	50	0	26258	232	26231	499	7514	1042	6238	294
Manitoba	9591	317	80	728	1125	37	9174	575	4058	4	17	84	12	0	4058	42	2530	79	4058	439	2564	121
Regina	7990	1428	132	153	1713	76	7990	531	9923	4	62	190	35	0	7990	118	7990	141	7990	1400	7990	241
Saskatoon	6069	0	0	870	870	32	6069	434	6069	2	7	35	13	48	6069	46	6069	120	6069	379	6069	87
Province of Saskatchewan	14059	1428	132	1023	2583	108	14059	965	15992	6	69	225	48	48	14059	164	14059	261	14059	1779	14059	328
Province of Alberta	33744	3613	997	2126	6736	250	27292	0	27292	29	226	620	239	0	27292	393	27292	761	27292	3989	27292	1287
Prairies	57394	5358	1209	3877	10444	395	50525	1540	47342	39	312	929	299	48	45409	599	43881	1101	45409	6207	43915	1736
British Columbia	24246	3138	1472	1606	6216	215	24209	1521	9928	13	68	331	103	0	9928	139	9928	70	7517	1474	7517	455
Yukon	347	62	12	35	109	0	347	18	N.A.	N.A.	N.A.	N.A.	N.A.	N.A.	N.A.	N.A.	N.A.	N.A.	N.A.	N.A.	N.A.	N.A.
Northwest Territories	738	174	2	0	176	1	733	0	733	2	0	28	4	0	733	22	733	7	733	126	733	46
Nunavut	103	20	0	0	20	0	103	0	103	4	0	3	0	0	103	16	102	0	103	27	102	9
Territories	1188	256	14	35	305	1	1183	18	836	6	0	31	4	0	836	38	835	7	836	153	835	55
CANADA	257670	11265	4336	28909	44511	1678	241810	17384	115557	216	835	2133	547	48	113177	1823	110662	2439	69793	9606	83382	3458

Specimens from YT, NT and NU are sent to reference laboratories in other provinces and reported results reflect specimens identified as originating from YT, NT or NU.

Results from British Columbia comprise of specimens from the following sites: BC Children's and Women's Hospital, Powell River Hospital, St. Paul's Hospital, Vancouver General Hospital, Victoria General Hospital, Interior Health Authority sites and Northern Health Authority sites.

Delays in the reporting of data may cause data to change retrospectively.

Due to reporting delays, the sum of weekly report totals do not add up to cumulative totals.

Figure 1: Number positive laboratory tests for other respiratory viruses by report week, Canada, 2018-19

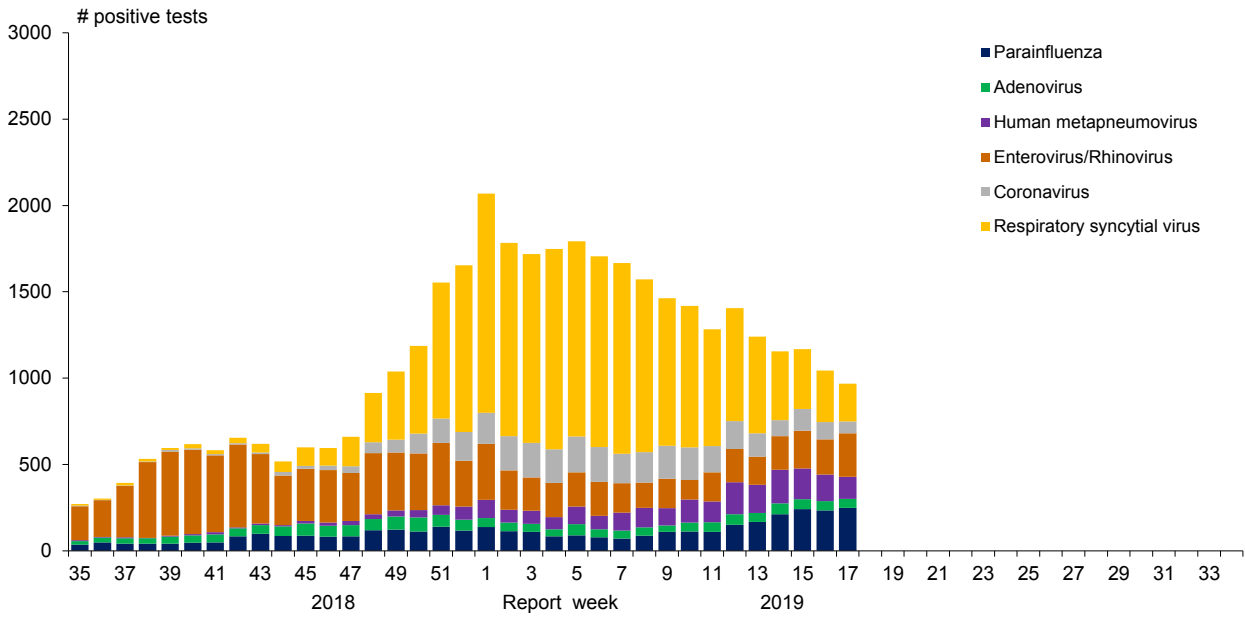


Figure 2: Positive Influenza Tests (%) in Canada by Region by Week of Report

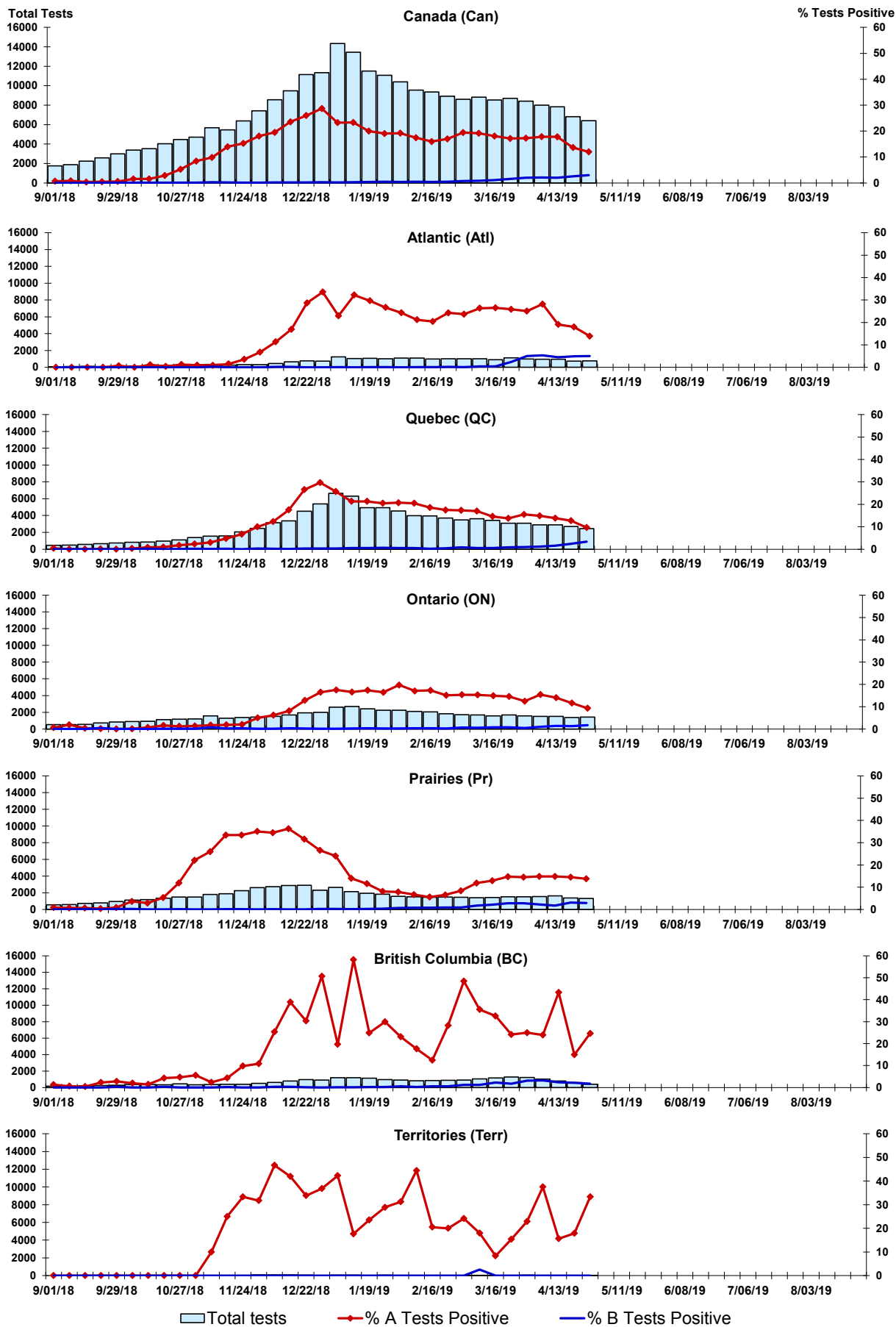


Figure 3: Positive Respiratory syncytial virus (RSV) Tests (%) in Canada by Region by Week of Report

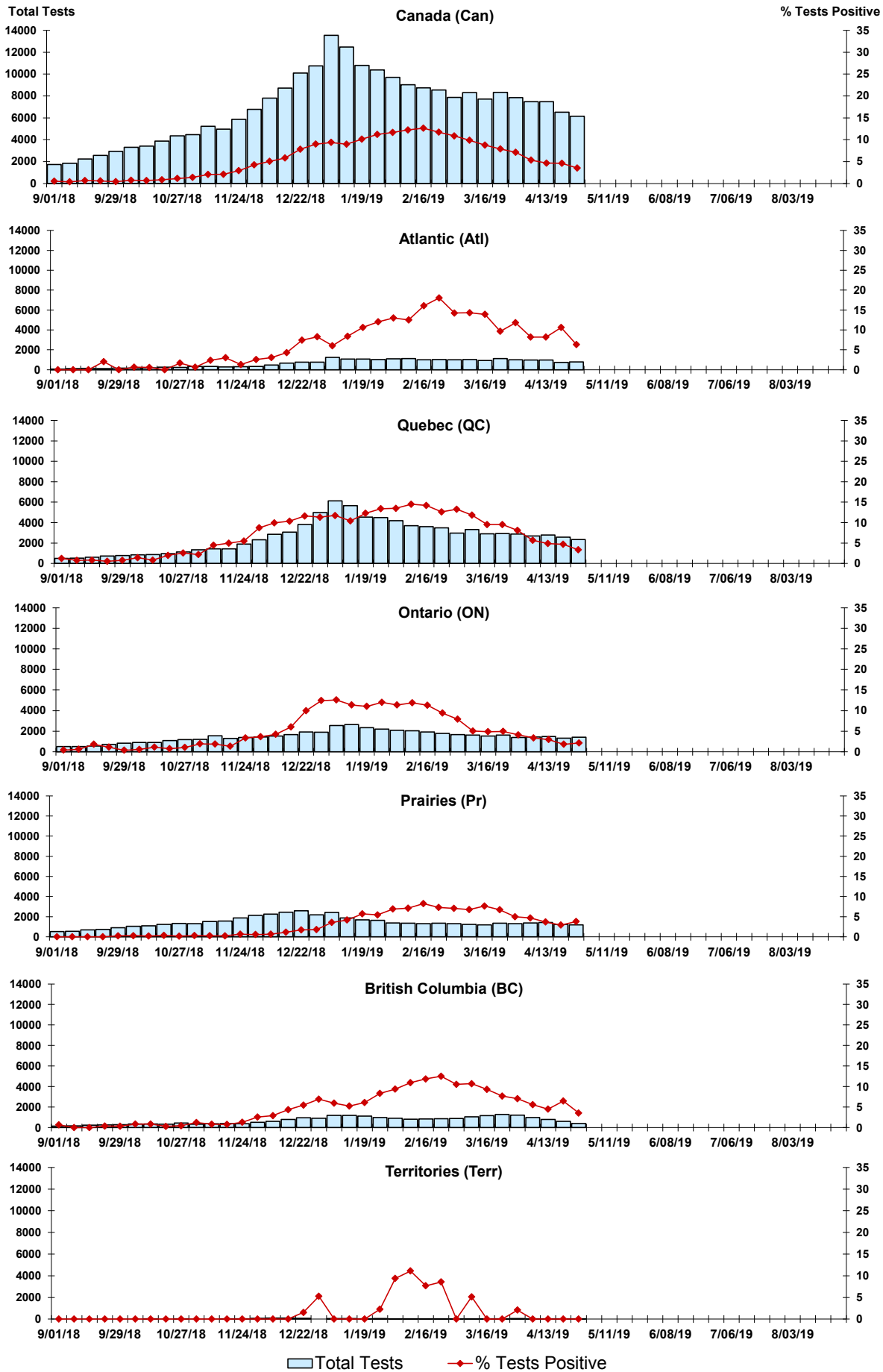


Figure 4: Positive Parainfluenza (PIV) Tests (%) in Canada by Region by Week of Report

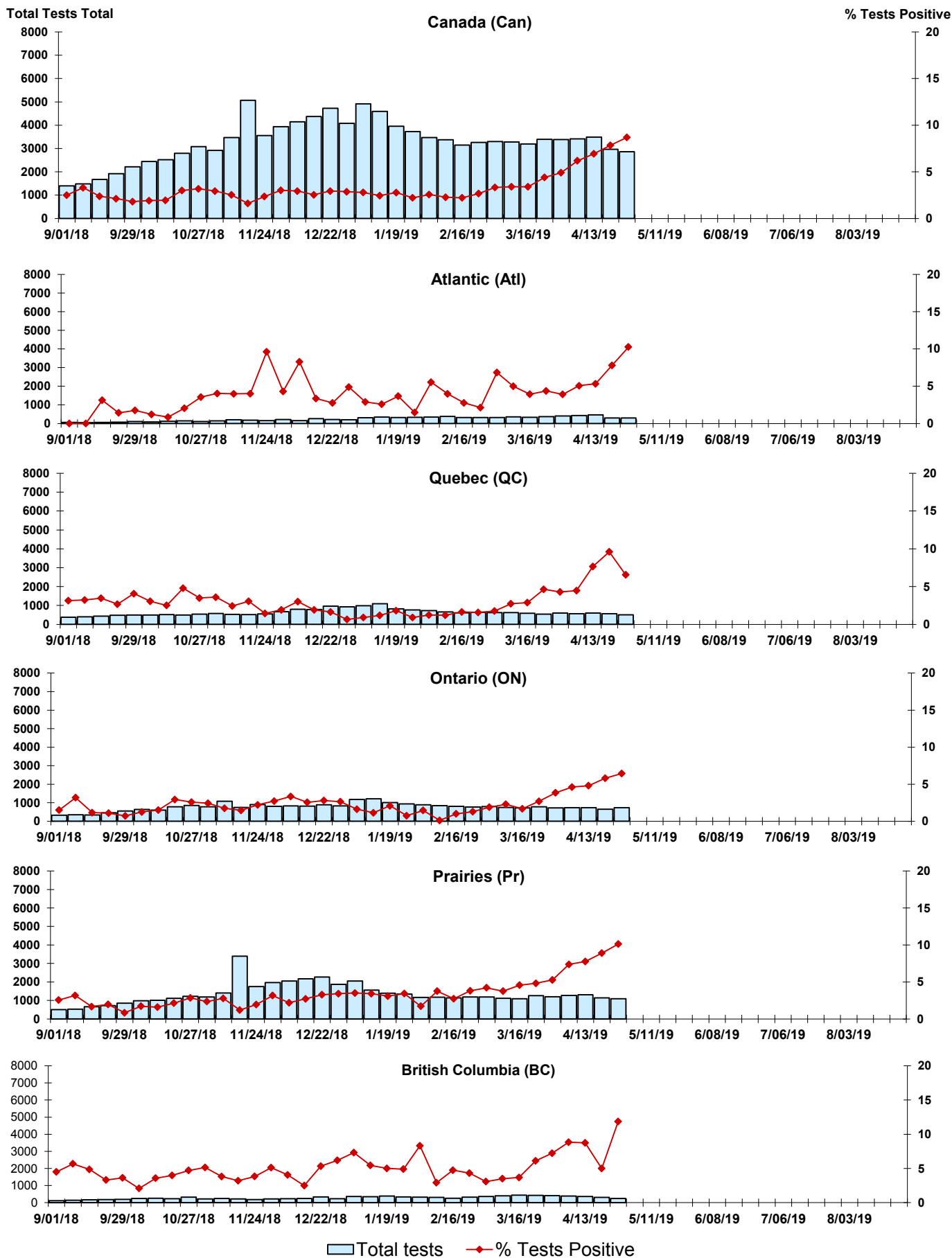


Figure 5: Positive Adenovirus (adeno) Tests (%) in Canada by Region by Week of Report

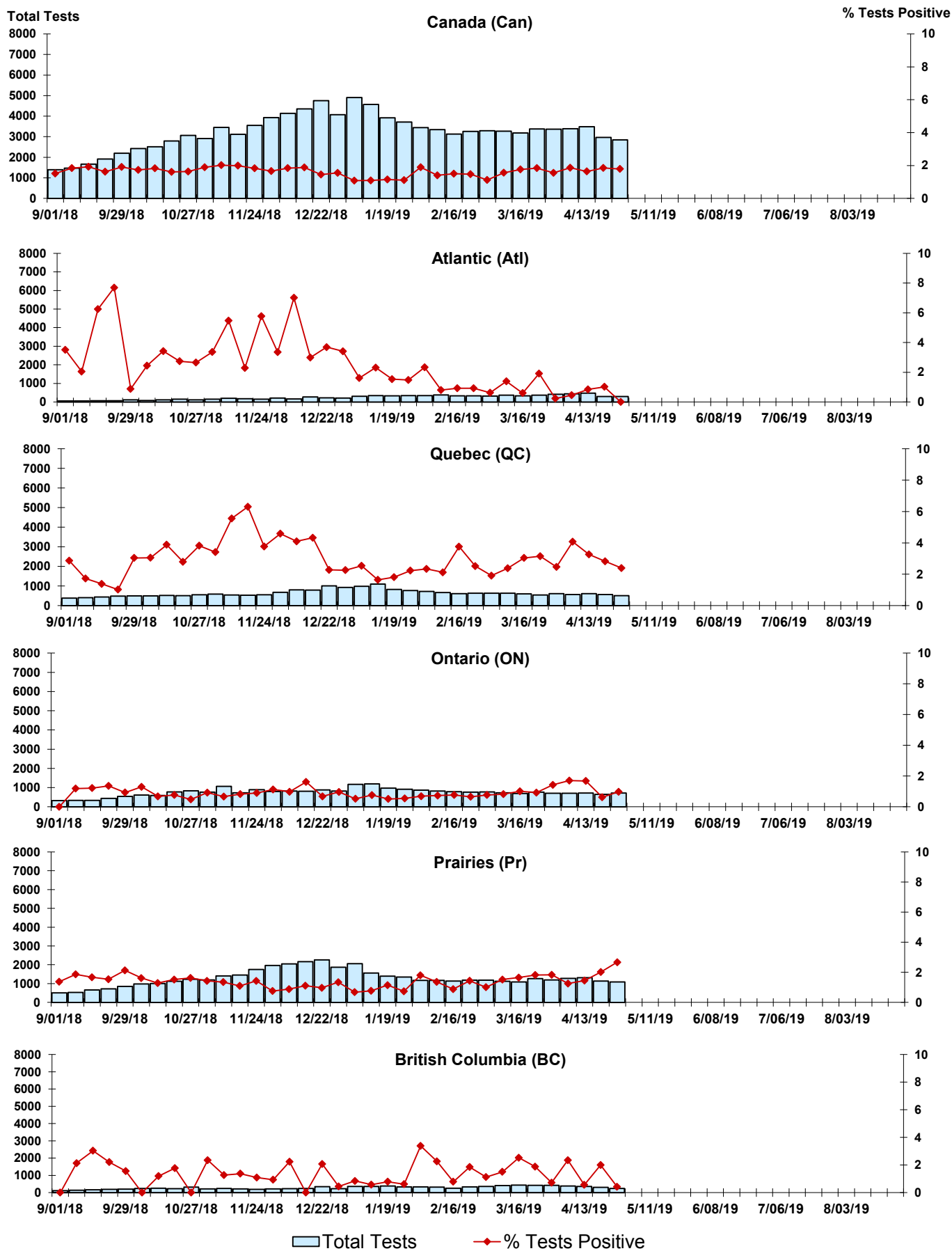


Figure 6: Positive human metapneumovirus (hMPV) Tests (%) in Canada by Region by Week of Report

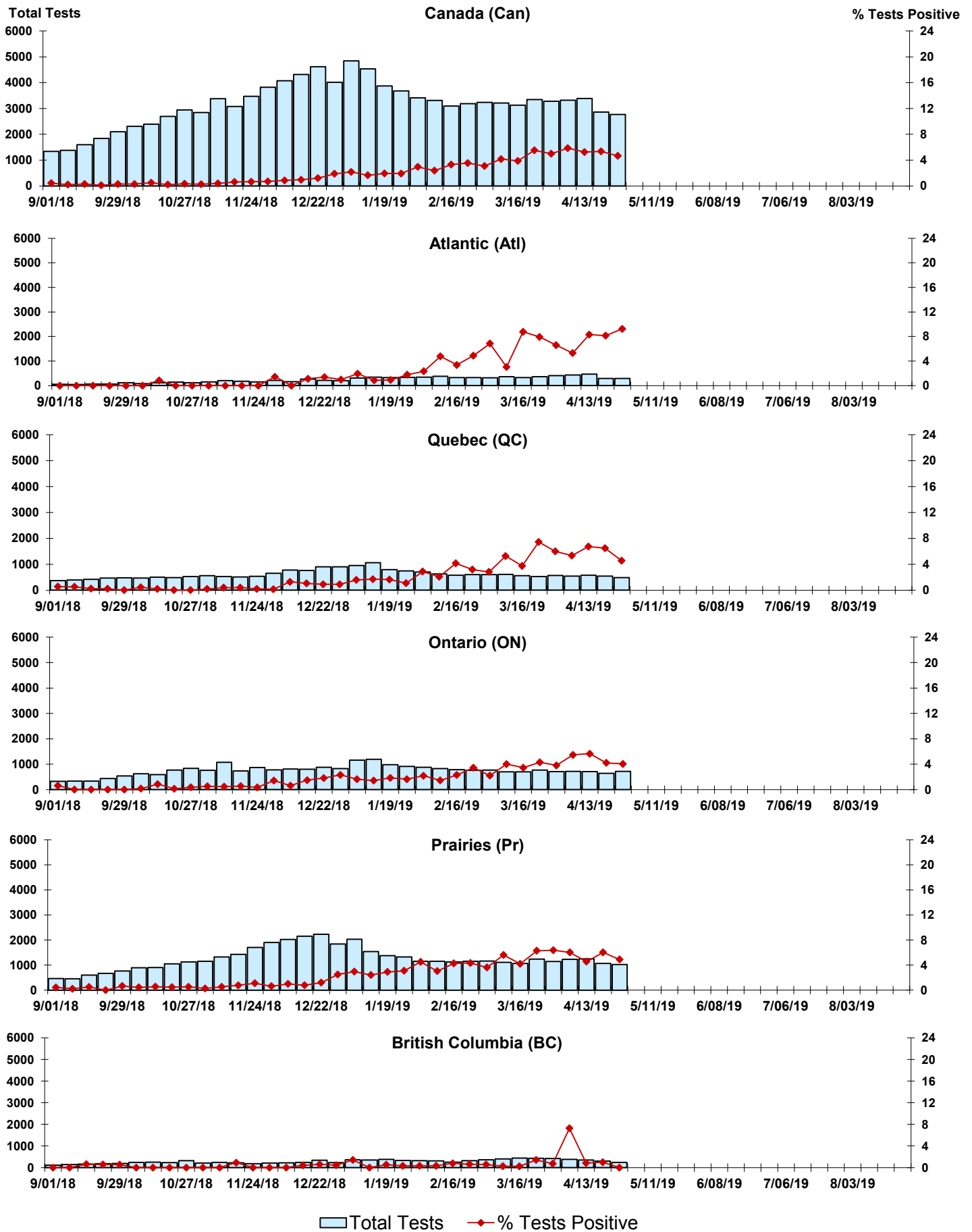


Figure 7: Positive Enterovirus/Rhinovirus (entero/rhino) Tests (%) in Canada by Region by Week of Report

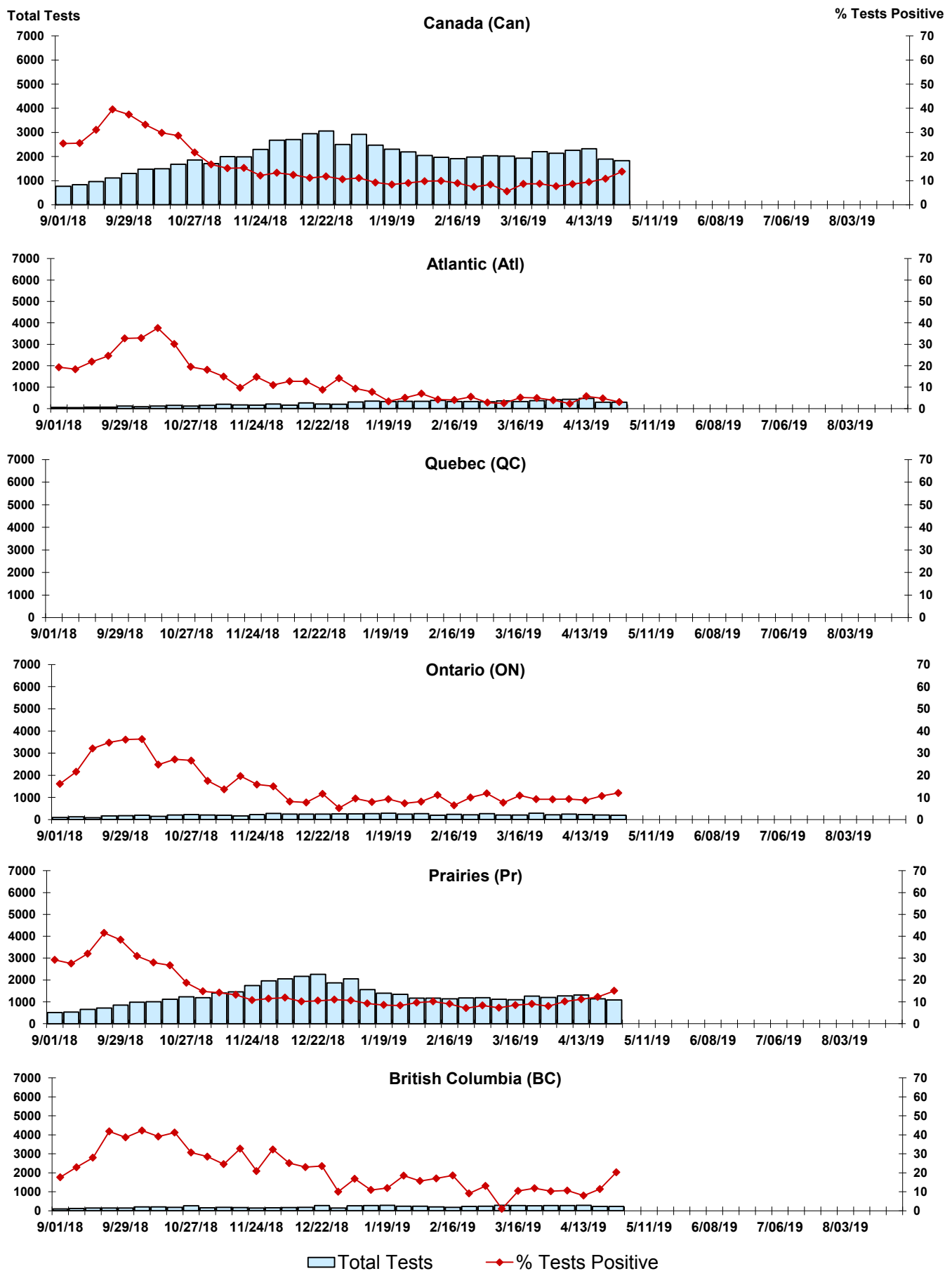
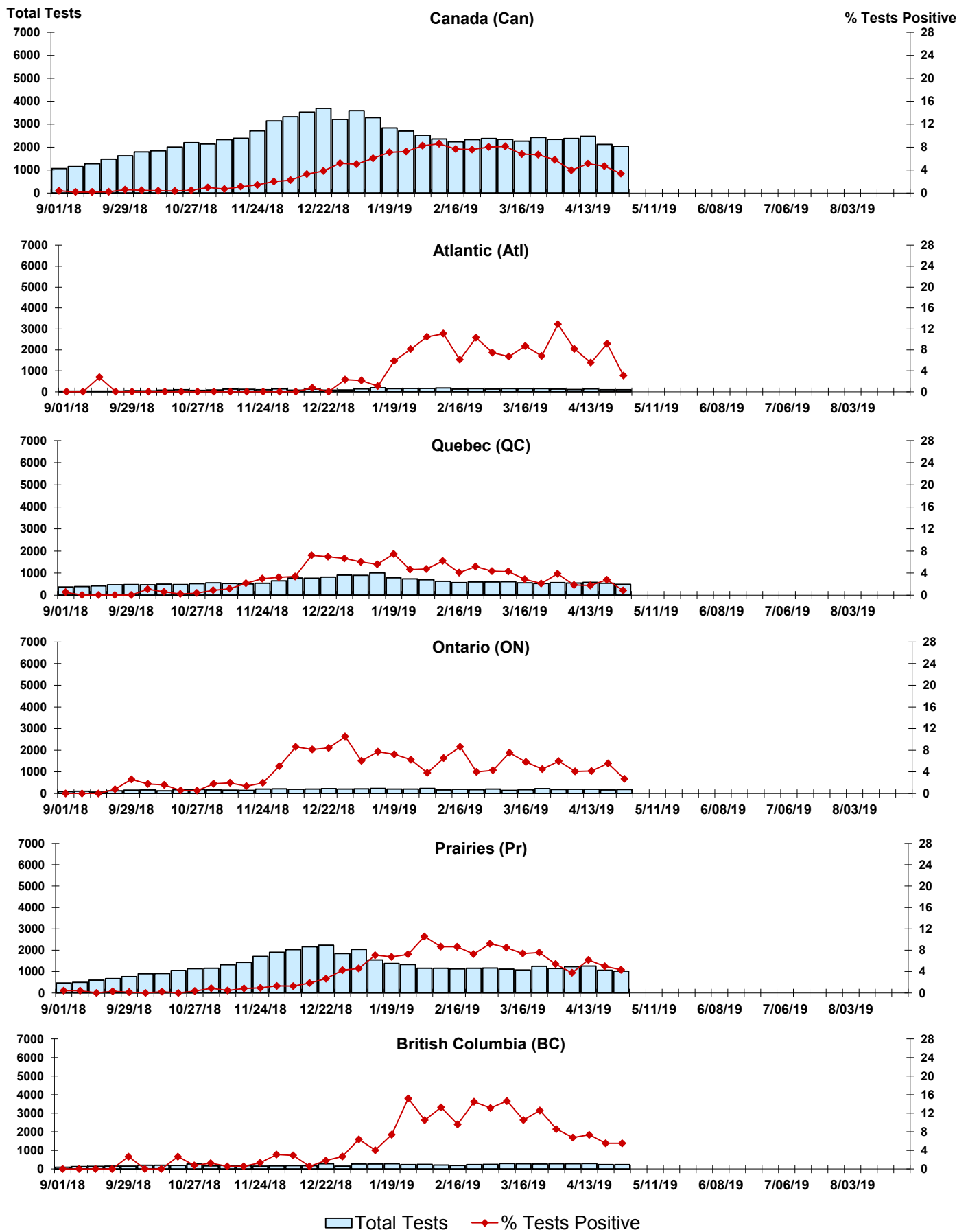


Figure 8: Positive Coronavirus (coron) Tests (%) in Canada by Region by Week of Report



Abbreviations:

A(H1N1)pdm09: Influenza A(H1N1)pdm09

A(H3): Influenza A(H3N2)

A (UnS): Influenza A (Unsubtyped)

Adeno: Adenovirus

CHEO: Children's Hospital of Eastern Ontario

Coron: Coronavirus

Entero: Enterovirus

hMPV: human metapneumovirus

HSC: Health Sciences Centre

N.A.: Not Applicable

P.H.L.: Public Health Laboratory

P.H.O.L.: Public Health Ontario Laboratory

PIV: Parainfluenza

Rhino: Rhinovirus

RSV: Respiratory syncytial virus

UHN: University Health Network

Notes:

Specimens from Yukon (YT), Northwest Territories (NT) and Nunavut (NU) are sent to reference laboratories in other provinces. Results reported for the Territories reflect the number of specimens that are identified as originating from YT, NT or NU.

Delays in the reporting of data may cause data to change retrospectively.

Due to reporting delays, the sum of weekly report totals do not add up to cumulative totals.