

# Respiratory Virus Detections in Canada

## Respiratory Virus Report, Week 18 - ending May 4, 2019

The Respiratory Virus Detection Surveillance System collects data from select laboratories across Canada on the number of tests performed and the number of tests positive for influenza and other respiratory viruses. Data are reported on a weekly basis year-round to the Centre for Immunization and Respiratory Infectious Diseases (CIRID), Public Health Agency of Canada. These data are also summarized in the weekly FluWatch report.

**Table 1: Respiratory Virus Detections/Isolations for the week ending May 4, 2019 (Reporting Week 201918)**

Reporting Laboratory	Flu Tested	A(H1N1)pdm09 Positive	A(H3) Positive	A(UnS) Positive	Total Flu A Positive	Total Flu B Positive	RSV Tested	RSV Positive	PIV Tested	PIV 1 Positive	PIV 2 Positive	PIV 3 Positive	PIV 4 Positive	Other PIV Positive	Adeno Tested	Adeno Positive	hMPV Tested	hMPV Positive	Entero/Rhino Tested	Entero/Rhino Positive	Coron Tested	Coron Positive
Newfoundland	133	0	0	15	15	0	133	8	133	2	0	13	0	0	133	0	133	11	133	7	N.A.	N.A.
Prince Edward Island	14	1	0	0	1	0	14	1	0	0	0	0	0	0	0	0	0	0	0	0	0	0
Nova Scotia	77	0	0	8	8	0	79	11	3	0	0	0	0	0	3	0	3	0	3	0	3	0
New Brunswick	307	0	0	29	29	32	307	17	111	0	0	15	1	0	111	2	111	2	111	15	111	4
<b>Atlantic</b>	<b>531</b>	<b>1</b>	<b>0</b>	<b>52</b>	<b>53</b>	<b>32</b>	<b>533</b>	<b>37</b>	<b>247</b>	<b>2</b>	<b>0</b>	<b>28</b>	<b>1</b>	<b>0</b>	<b>247</b>	<b>2</b>	<b>247</b>	<b>13</b>	<b>247</b>	<b>22</b>	<b>114</b>	<b>4</b>
Région Nord-Est	224	0	0	9	9	5	184	20	0	0	0	0	0	0	0	0	0	0	N.A.	N.A.	0	0
Québec-Chaudière-Appalaches	361	0	0	16	16	7	380	12	96	2	0	6	0	0	97	6	80	4	N.A.	N.A.	78	0
Centre-du-Québec	391	0	0	33	33	5	338	11	0	0	0	0	0	0	0	0	0	0	N.A.	N.A.	0	0
Montréal-Laval	769	0	0	56	56	25	675	8	471	2	0	41	0	0	471	5	465	22	N.A.	N.A.	465	4
Ouest du Québec	234	0	0	23	23	18	224	9	0	0	0	0	0	0	0	0	0	0	N.A.	N.A.	0	0
Montréal	170	0	0	15	15	5	170	2	0	0	0	0	0	0	0	0	0	0	N.A.	N.A.	0	0
<b>Province of Québec</b>	<b>2149</b>	<b>0</b>	<b>0</b>	<b>152</b>	<b>152</b>	<b>65</b>	<b>1971</b>	<b>62</b>	<b>567</b>	<b>4</b>	<b>0</b>	<b>47</b>	<b>0</b>	<b>0</b>	<b>568</b>	<b>11</b>	<b>545</b>	<b>26</b>	<b>N.A.</b>	<b>N.A.</b>	<b>543</b>	<b>4</b>
Ottawa P.H.L.	19	0	1	1	2	1	19	0	8	0	0	0	0	0	8	0	7	0	1	0	0	0
CHEO - Ottawa	174	0	0	14	14	3	174	3	17	1	0	1	0	0	17	1	17	1	17	4	16	0
Kingston P.H.L.	30	0	1	1	2	3	30	0	15	0	0	2	0	0	15	0	14	0	2	0	0	0
UHN / Mount Sinai Hospital	266	0	0	8	8	1	266	1	7	0	0	0	0	0	0	0	7	0	N.A.	N.A.	N.A.	N.A.
P.H.O.L. - Toronto	277	3	12	1	16	2	273	6	243	0	0	8	0	0	243	0	234	5	9	0	0	0
Sick Kids Hospital - Toronto	49	0	2	1	3	2	49	0	49	1	0	2	0	0	49	3	49	3	49	12	49	2
Sunnybrook & Women's College HSC	67	1	1	0	2	0	67	0	67	0	0	1	0	0	67	0	67	0	67	1	67	0
Sault Ste. Marie P.H.L.	4	0	0	0	0	0	4	0	4	0	0	0	0	0	4	0	4	0	0	0	0	0
Timmins P.H.L.	12	0	1	0	1	0	10	2	10	0	0	0	0	0	10	0	10	0	0	0	0	0
St. Joseph's - London	116	0	0	2	2	0	116	1	45	0	0	3	0	0	45	0	45	0	45	6	27	1
London P.H.L.	68	0	6	1	7	1	68	1	53	0	0	5	0	0	53	1	49	1	4	0	0	0
Orillia P.H.L.	40	0	4	0	4	1	40	0	15	0	0	0	0	0	15	0	15	0	0	0	0	0
Thunder Bay P.H.L.	14	1	2	0	3	0	9	0	9	0	0	2	0	0	9	0	9	0	0	0	0	0
Sudbury P.H.L.	19	0	1	0	1	0	18	0	18	0	0	0	0	0	18	0	16	1	2	0	0	0
Hamilton P.H.L.	101	0	11	0	11	1	100	0	88	0	0	5	0	0	88	0	87	2	1	0	0	0
Peterborough P.H.L.	28	0	3	0	3	0	28	0	14	0	0	0	0	0	14	0	13	1	1	0	0	0
<b>Province of Ontario</b>	<b>1284</b>	<b>5</b>	<b>45</b>	<b>29</b>	<b>79</b>	<b>15</b>	<b>1271</b>	<b>14</b>	<b>662</b>	<b>2</b>	<b>0</b>	<b>29</b>	<b>0</b>	<b>0</b>	<b>655</b>	<b>5</b>	<b>643</b>	<b>14</b>	<b>198</b>	<b>23</b>	<b>159</b>	<b>3</b>
Manitoba	315	4	8	4	16	7	287	12	183	0	0	10	0	0	183	1	88	0	183	22	88	5
Regina	104	0	5	0	5	0	104	5	104	0	1	2	0	0	104	2	104	8	104	13	104	20
Saskatoon	0	0	0	0	0	0	0	0	0	0	0	0	0	0	0	0	0	0	0	0	0	0
Province of Saskatchewan	104	0	5	0	5	0	104	5	104	0	1	2	0	0	104	2	104	8	104	13	104	20
Province of Alberta	797	5	69	22	96	21	686	0	686	2	0	78	0	0	686	7	686	32	686	88	686	18
<b>Prairies</b>	<b>1216</b>	<b>9</b>	<b>82</b>	<b>26</b>	<b>117</b>	<b>28</b>	<b>1077</b>	<b>17</b>	<b>973</b>	<b>2</b>	<b>1</b>	<b>90</b>	<b>0</b>	<b>0</b>	<b>973</b>	<b>10</b>	<b>878</b>	<b>40</b>	<b>973</b>	<b>123</b>	<b>878</b>	<b>43</b>
<b>British Columbia</b>	<b>383</b>	<b>10</b>	<b>24</b>	<b>22</b>	<b>56</b>	<b>7</b>	<b>383</b>	<b>16</b>	<b>247</b>	<b>0</b>	<b>0</b>	<b>18</b>	<b>0</b>	<b>0</b>	<b>247</b>	<b>5</b>	<b>247</b>	<b>0</b>	<b>206</b>	<b>34</b>	<b>206</b>	<b>5</b>
Yukon	12	3	2	0	5	0	12	0	N.A.	N.A.	N.A.	N.A.	N.A.	N.A.	N.A.	N.A.	N.A.	N.A.	N.A.	N.A.	N.A.	N.A.
Northwest Territories	6	0	1	0	1	0	6	0	6	0	0	0	0	0	6	1	6	0	6	0	6	0
Nunavut	3	0	0	0	0	0	3	0	3	0	0	0	0	0	3	0	3	0	3	0	3	0
<b>Territories</b>	<b>21</b>	<b>3</b>	<b>3</b>	<b>0</b>	<b>6</b>	<b>0</b>	<b>21</b>	<b>0</b>	<b>9</b>	<b>0</b>	<b>0</b>	<b>0</b>	<b>0</b>	<b>0</b>	<b>9</b>	<b>1</b>	<b>9</b>	<b>0</b>	<b>9</b>	<b>0</b>	<b>9</b>	<b>0</b>
<b>CANADA</b>	<b>5584</b>	<b>28</b>	<b>154</b>	<b>281</b>	<b>463</b>	<b>147</b>	<b>5256</b>	<b>146</b>	<b>2705</b>	<b>10</b>	<b>1</b>	<b>212</b>	<b>1</b>	<b>0</b>	<b>2699</b>	<b>34</b>	<b>2569</b>	<b>93</b>	<b>1633</b>	<b>202</b>	<b>1909</b>	<b>59</b>

Specimens from Yukon (YT), Northwest Territories (NT) and Nunavut (NU) are sent to reference laboratories in other provinces and reported results reflect specimens identified as originating from YT, NT or NU.

Results from British Columbia comprise of specimens from the following sites: BC Children's and Women's Hospital, Powell River Hospital, St. Paul's Hospital, Vancouver General Hospital, Victoria General Hospital, Interior Health Authority sites and Northern Health Authority sites.

Delays in the reporting of data may cause data to change retrospectively.

**Table 2: Respiratory Virus Detections/Isolations for the period August 26, 2018 - May 4, 2019 (Reporting Weeks 201835-201918)**

Reporting Laboratory	Flu Tested	A(H1N1)pdm09 Positive	A(H3) Positive	A(UnS) Positive	Total Flu A Positive	Total Flu B Positive	RSV Tested	RSV Positive	PIV Tested	PIV 1 Positive	PIV 2 Positive	PIV 3 Positive	PIV 4 Positive	Other PIV Positive	Adeno Tested	Adeno Positive	hMPV Tested	hMPV Positive	Entero/Rhino Tested	Entero/Rhino Positive	Coron Tested	Coron Positive
Newfoundland	4823	1	0	1015	1016	4	4823	473	4823	8	58	156	0	0	4823	37	4823	182	4823	312	N.A.	N.A.
Prince Edward Island	1219	221	56	1	278	1	1217	137	83	1	0	2	3	0	78	5	78	3	78	22	78	3
Nova Scotia	3823	0	0	782	782	17	3831	385	508	0	4	25	2	0	508	0	508	8	508	64	508	11
New Brunswick	13291	230	34	2546	2810	277	13290	1194	3355	0	18	80	41	0	3355	122	3355	134	3355	354	3355	169
<b>Atlantic</b>	<b>23156</b>	<b>452</b>	<b>90</b>	<b>4344</b>	<b>4886</b>	<b>299</b>	<b>23161</b>	<b>2189</b>	<b>8769</b>	<b>9</b>	<b>80</b>	<b>263</b>	<b>46</b>	<b>0</b>	<b>8764</b>	<b>164</b>	<b>8764</b>	<b>327</b>	<b>8764</b>	<b>752</b>	<b>3941</b>	<b>183</b>
Région Nord-Est	8864	0	0	1555	1555	46	7004	667	0	0	0	0	0	0	0	0	0	0	N.A.	N.A.	0	0
Québec-Chaudière-Appalaches	15236	0	0	3113	3113	51	15473	1553	2863	7	32	54	9	0	2968	97	2404	40	N.A.	N.A.	2233	27
Centre-du-Québec	17688	0	0	3603	3603	185	14256	1576	0	0	0	0	0	0	36	0	0	0	N.A.	N.A.	0	0
Montréal-Laval	38239	0	0	4499	4499	222	37017	2955	19793	78	151	294	37	0	19793	567	19411	434	N.A.	N.A.	19360	716
Ouest du Québec	12302	0	0	2647	2647	108	11253	1395	0	0	0	0	0	0	0	0	0	0	N.A.	N.A.	0	0
Montérégie	8539	0	0	1359	1360	39	8129	671	0	0	0	0	0	0	0	0	0	0	N.A.	N.A.	0	0
<b>Province of Québec</b>	<b>100868</b>	<b>0</b>	<b>0</b>	<b>16776</b>	<b>16777</b>	<b>651</b>	<b>93132</b>	<b>8817</b>	<b>22656</b>	<b>85</b>	<b>183</b>	<b>348</b>	<b>46</b>	<b>0</b>	<b>22797</b>	<b>664</b>	<b>21815</b>	<b>474</b>	<b>N.A.</b>	<b>N.A.</b>	<b>21593</b>	<b>743</b>
Ottawa P.H.L.	932	91	68	22	181	4	927	88	520	0	3	6	0	0	520	1	498	9	27	0	0	0
CHEO - Ottawa	7692	0	0	835	835	28	7692	917	819	4	10	17	6	0	820	25	819	16	812	201	793	39
Kingston P.H.L.	919	67	71	12	150	14	919	61	632	0	4	14	0	0	632	1	601	7	89	0	0	0
UHN / Mount Sinai Hospital	11125	5	15	735	755	47	11125	473	590	1	9	10	3	0	0	0	547	5	N.A.	N.A.	N.A.	N.A.
P.H.O.L. - Toronto	12929	873	653	96	1622	61	12498	524	10125	16	61	76	0	0	10126	50	9830	142	476	0	0	0
Sick Kids Hospital - Toronto	2531	112	43	122	277	32	2115	218	2115	18	35	49	25	0	2115	80	2115	86	2115	499	2115	133
Sunnybrook & Women's College HSC	2457	72	96	11	179	6	2457	62	2457	5	5	14	1	0	2457	1	2457	72	2457	191	2457	94
Sault Ste. Marie P.H.L.	411	47	40	3	90	0	343	17	314	0	3	0	0	0	314	0	308	5	10	0	0	0
Timmins P.H.L.	364	58	9	1	68	0	296	9	294	0	7	3	0	0	294	0	287	1	15	0	0	0
St. Joseph's - London	4359	3	0	522	525	5	4231	357	1448	5	6	31	15	0	1448	31	1448	46	1060	163	807	21
London P.H.L.	3873	319	193	59	571	15	3835	328	2666	4	23	34	0	0	2666	19	2574	37	165	0	0	0
Orillia P.H.L.	1145	66	65	22	153	2	1145	127	793	2	2	11	0	0	793	1	780	15	35	0	0	0
Thunder Bay P.H.L.	433	30	45	8	83	0	340	15	327	1	1	13	0	0	326	4	311	9	25	0	0	0
Sudbury P.H.L.	834	47	17	0	64	0	775	32	752	3	4	2	0	0	752	3	707	11	72	0	0	0
Hamilton P.H.L.	3698	234	204	32	470	12	3600	135	2880	12	15	54	0	0	2880	21	2832	44	132	0	0	0
Peterborough P.H.L.	1079	44	78	22	144	3	1076	49	827	2	4	5	0	0	827	0	817	11	13	0	0	0
<b>Province of Ontario</b>	<b>54781</b>	<b>2068</b>	<b>1597</b>	<b>2502</b>	<b>6167</b>	<b>229</b>	<b>53374</b>	<b>3412</b>	<b>27559</b>	<b>73</b>	<b>192</b>	<b>339</b>	<b>50</b>	<b>0</b>	<b>26970</b>	<b>237</b>	<b>26931</b>	<b>516</b>	<b>7721</b>	<b>1065</b>	<b>6397</b>	<b>297</b>
Manitoba	9906	322	93	726	1141	44	9461	589	4241	4	17	94	12	0	4241	42	2618	79	4241	461	2652	126
Regina	8094	1428	137	153	1718	76	8094	536	10027	4	63	192	35	0	8094	120	8094	149	8094	1413	8094	261
Saskatoon	6069	0	0	870	870	32	6069	434	6069	2	7	35	13	48	6069	46	6069	120	6069	379	6069	87
Province of Saskatchewan	14163	1428	137	1023	2588	108	14163	970	16096	6	70	227	48	48	14163	166	14163	269	14163	1792	14163	348
Province of Alberta	34578	3618	1072	2149	6839	273	28009	0	28009	31	227	702	241	0	28009	400	28009	796	28009	4085	28009	1307
<b>Prairies</b>	<b>58647</b>	<b>5368</b>	<b>1302</b>	<b>3898</b>	<b>10568</b>	<b>425</b>	<b>51633</b>	<b>1559</b>	<b>48346</b>	<b>41</b>	<b>314</b>	<b>1023</b>	<b>301</b>	<b>48</b>	<b>46413</b>	<b>608</b>	<b>44790</b>	<b>1144</b>	<b>46413</b>	<b>6338</b>	<b>44824</b>	<b>1781</b>
British Columbia	24762	3150	1497	1596	6243	223	24725	1540	10260	13	68	351	103	0	10260	144	10260	74	7761	1510	7761	462
Yukon	359	65	14	35	114	0	359	18	N.A.	N.A.	N.A.	N.A.	N.A.	N.A.	N.A.	N.A.	N.A.	N.A.	N.A.	N.A.	N.A.	N.A.
Northwest Territories	750	175	3	0	178	2	745	0	745	2	0	28	4	0	745	24	745	7	745	126	745	47
Nunavut	108	20	0	0	20	0	108	0	108	4	0	3	0	0	108	16	107	0	108	27	107	9
<b>Territories</b>	<b>1217</b>	<b>260</b>	<b>17</b>	<b>35</b>	<b>312</b>	<b>2</b>	<b>1212</b>	<b>18</b>	<b>853</b>	<b>6</b>	<b>0</b>	<b>31</b>	<b>4</b>	<b>0</b>	<b>853</b>	<b>40</b>	<b>852</b>	<b>7</b>	<b>853</b>	<b>153</b>	<b>852</b>	<b>56</b>
<b>CANADA</b>	<b>263431</b>	<b>11298</b>	<b>4503</b>	<b>29151</b>	<b>44953</b>	<b>1829</b>	<b>247237</b>	<b>17535</b>	<b>118443</b>	<b>227</b>	<b>837</b>	<b>2355</b>	<b>550</b>	<b>48</b>	<b>116057</b>	<b>1857</b>	<b>113412</b>	<b>2542</b>	<b>71512</b>	<b>9818</b>	<b>85368</b>	<b>3522</b>

Specimens from YT, NT and NU are sent to reference laboratories in other provinces and reported results reflect specimens identified as originating from YT, NT or NU.

Results from British Columbia comprise of specimens from the following sites: BC Children's and Women's Hospital, Powell River Hospital, St. Paul's Hospital, Vancouver General Hospital, Victoria General Hospital, Interior Health Authority sites and Northern Health Authority sites.

Delays in the reporting of data may cause data to change retrospectively.

Due to reporting delays, the sum of weekly report totals do not add up to cumulative totals.

Figure 1: Number positive laboratory tests for other respiratory viruses by report week, Canada, 2018-19

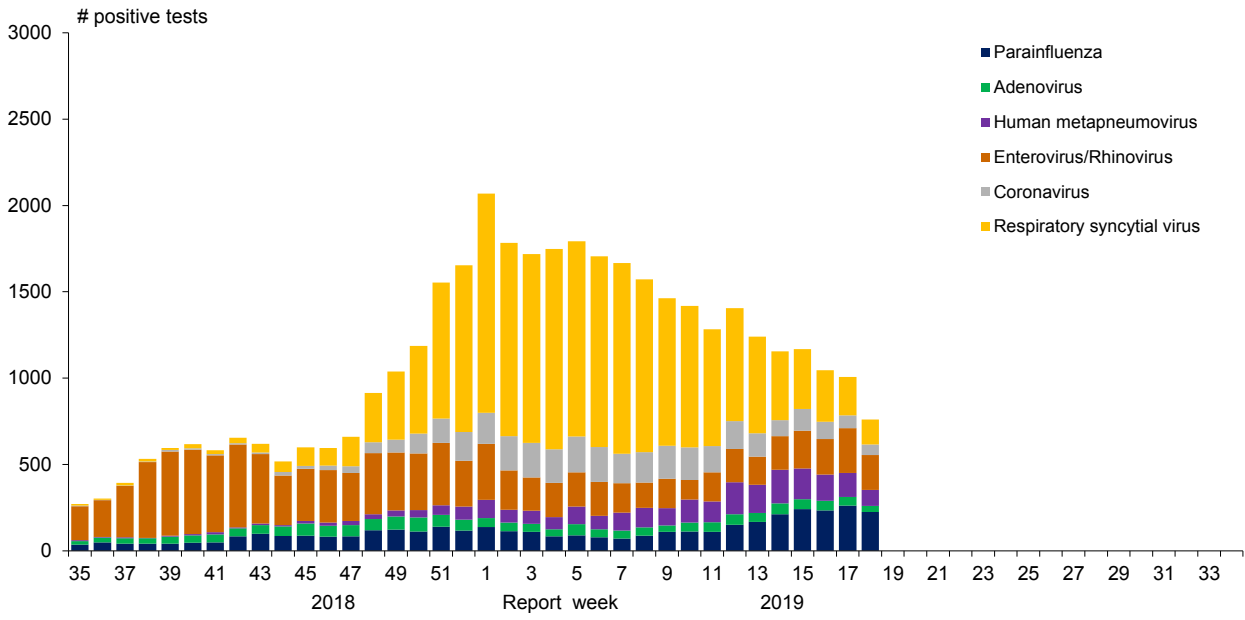


Figure 2: Positive Influenza Tests (%) in Canada by Region by Week of Report

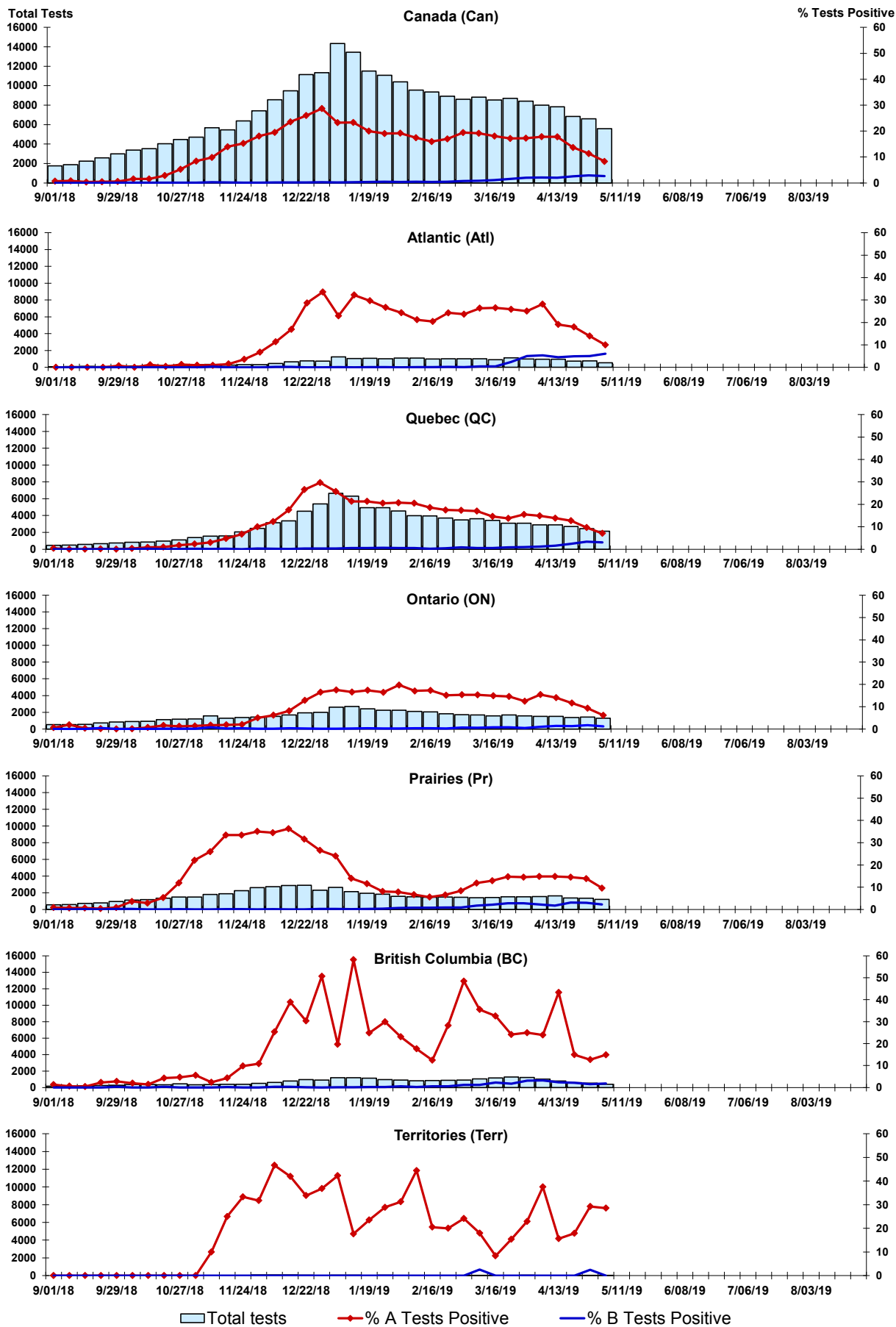


Figure 3: Positive Respiratory syncytial virus (RSV) Tests (%) in Canada by Region by Week of Report

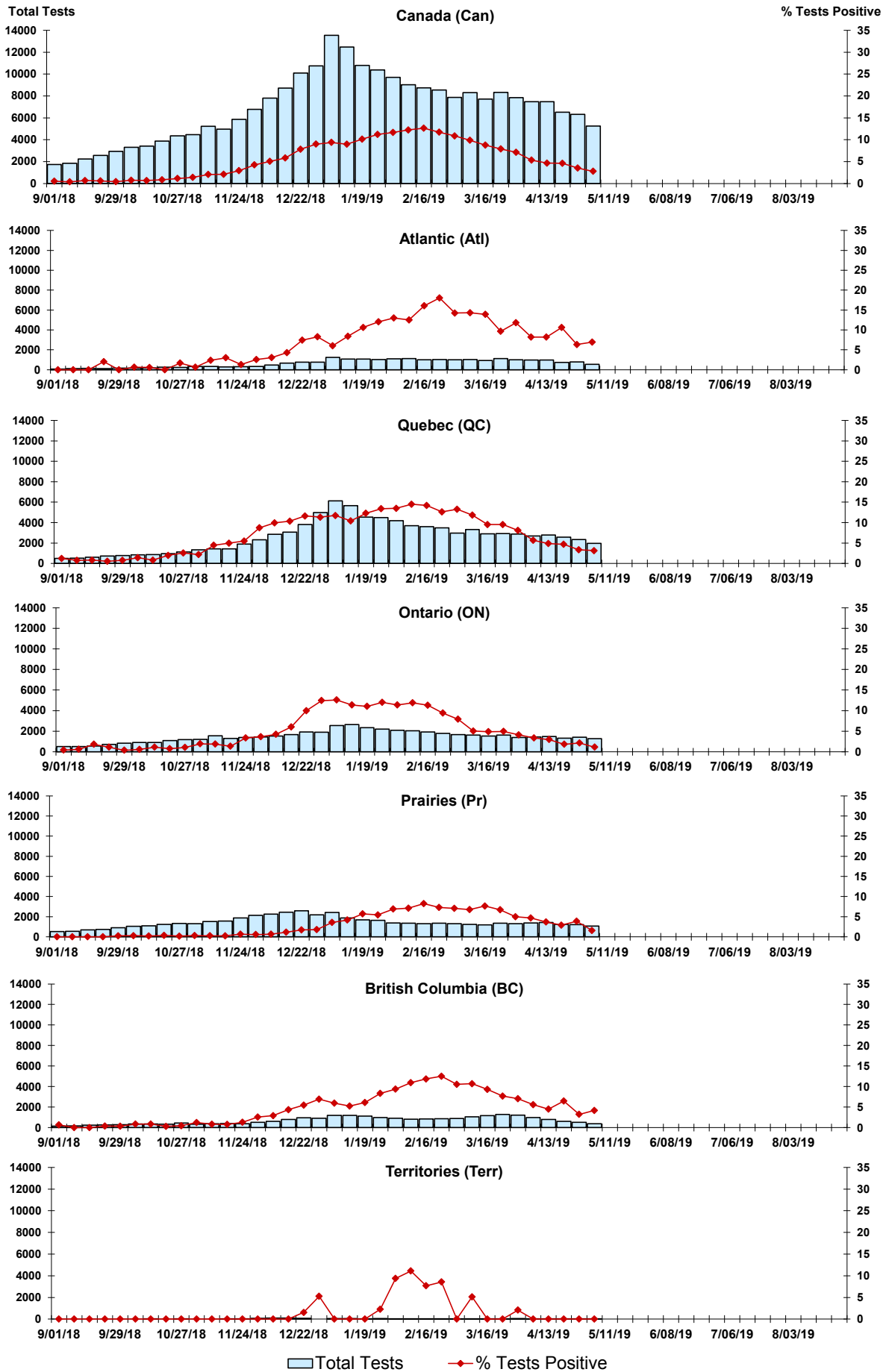


Figure 4: Positive Parainfluenza (PIV) Tests (%) in Canada by Region by Week of Report

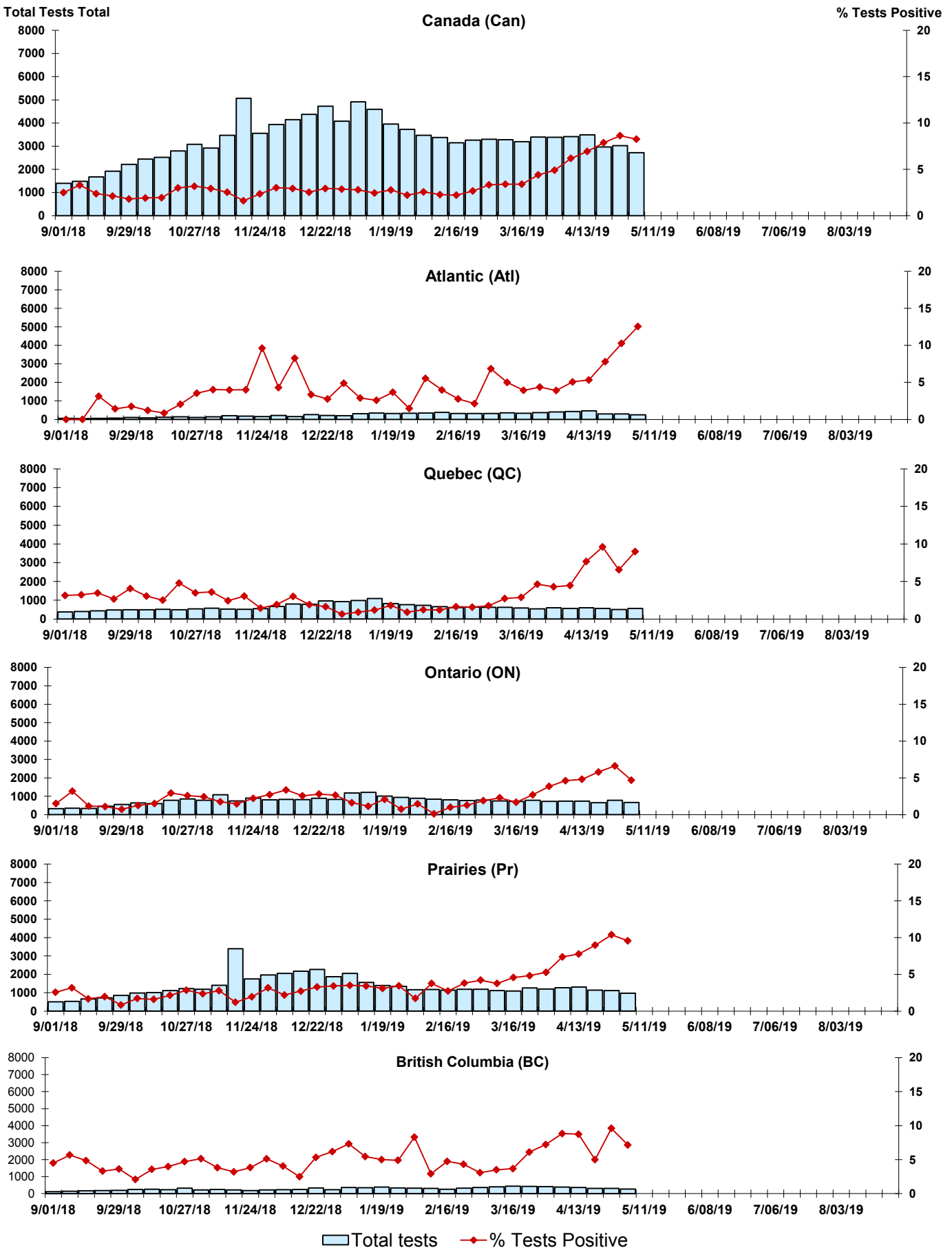


Figure 5: Positive Adenovirus (adeno) Tests (%) in Canada by Region by Week of Report

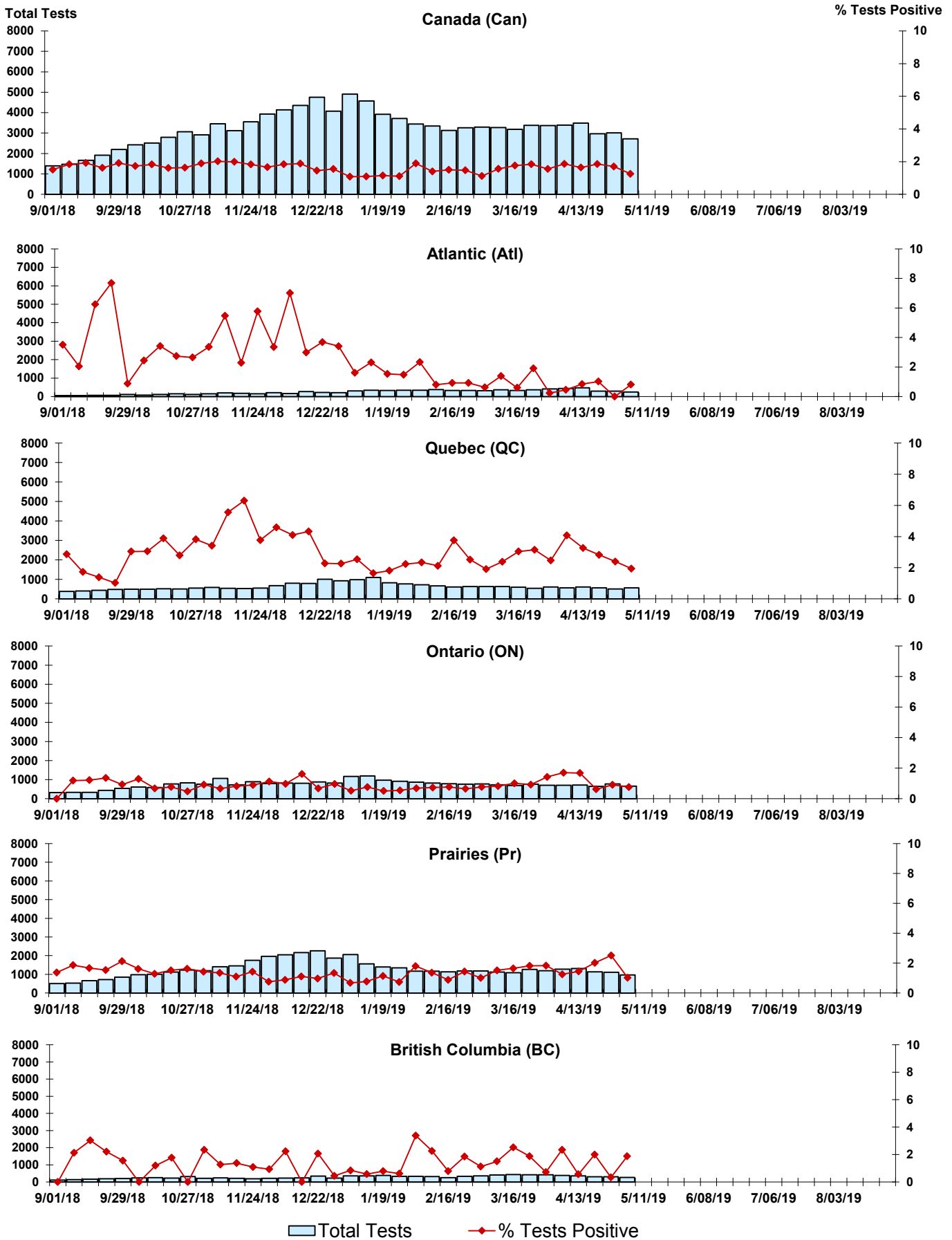
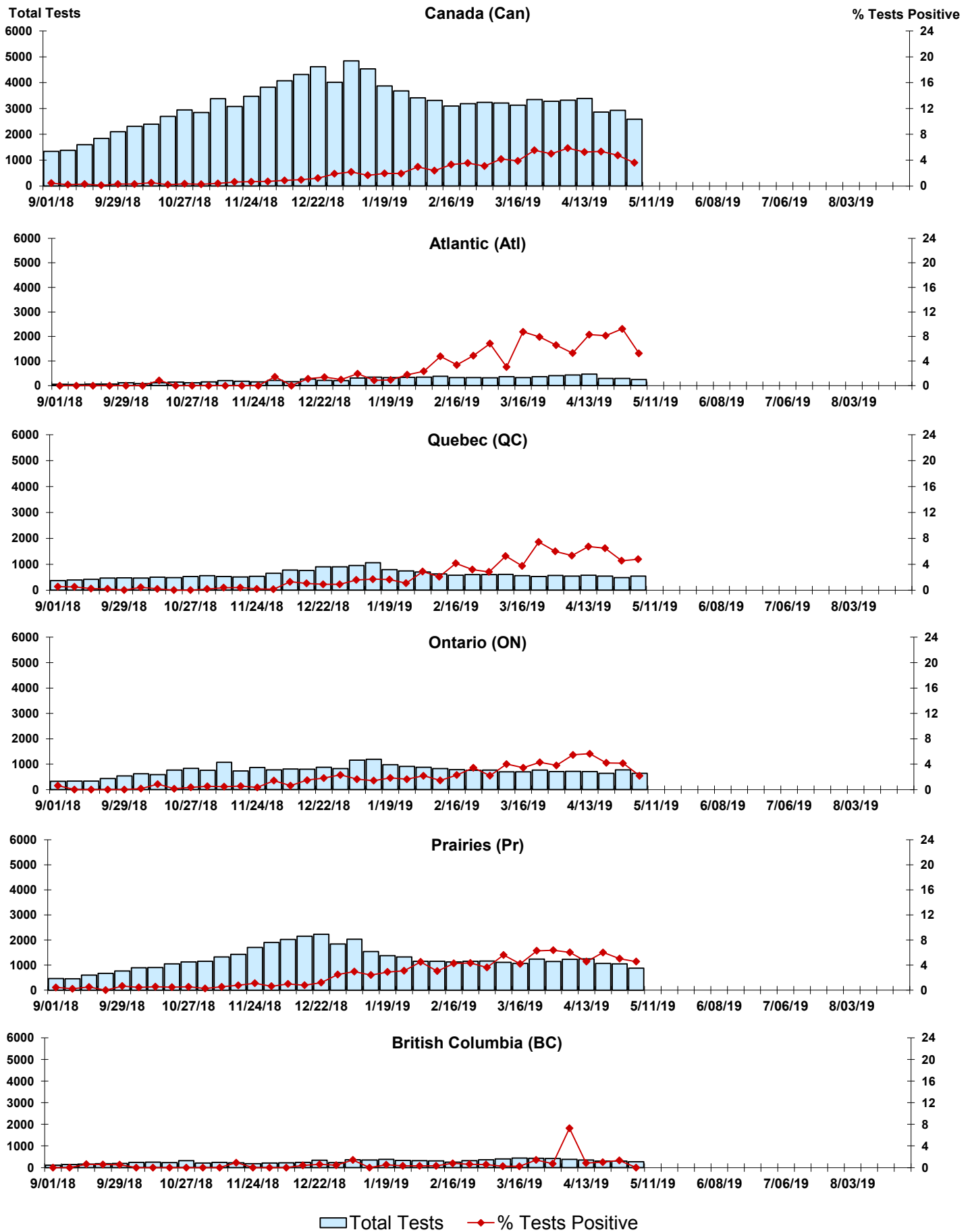


Figure 6: Positive human metapneumovirus (hMPV) Tests (%) in Canada by Region by Week of Report



□ Total Tests    —◆ % Tests Positive



Figure 7: Positive Enterovirus/Rhinovirus (entero/rhino) Tests (%) in Canada by Region by Week of Report

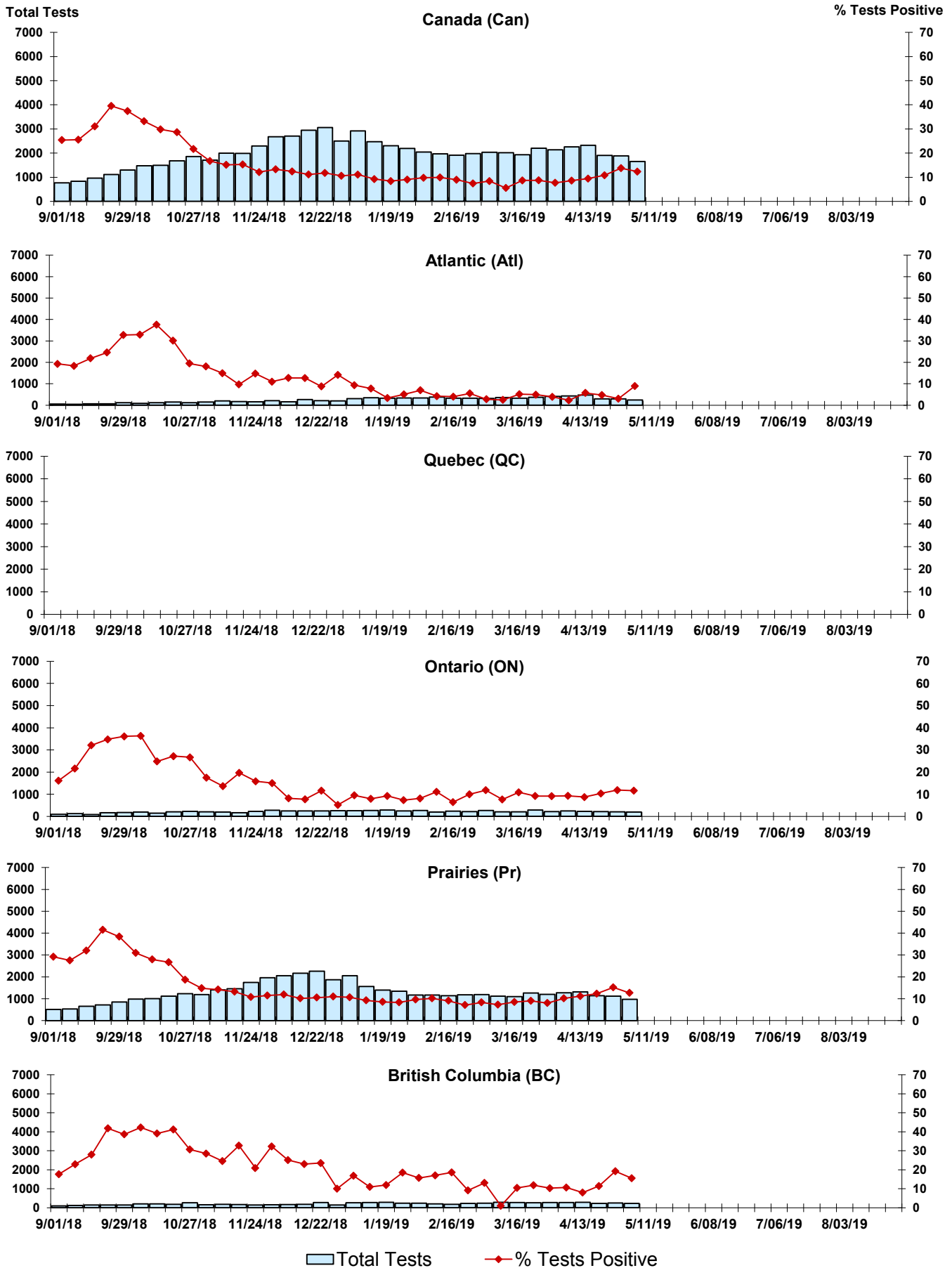
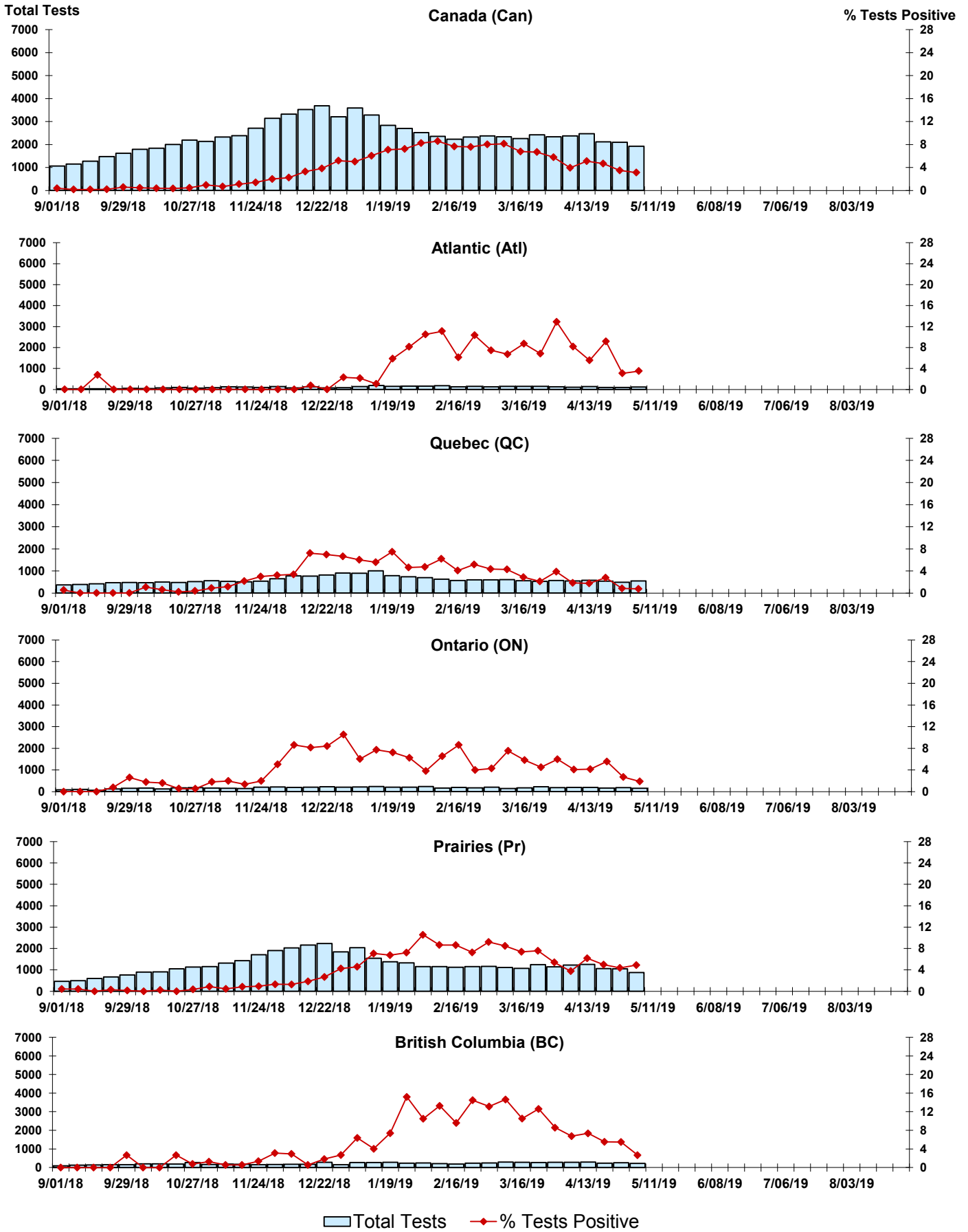


Figure 8: Positive Coronavirus (coron) Tests (%) in Canada by Region by Week of Report



## Abbreviations:

A(H1N1)pdm09: Influenza A(H1N1)pdm09

A(H3): Influenza A(H3N2)

A (UnS): Influenza A (Unsubtyped)

Adeno: Adenovirus

CHEO: Children's Hospital of Eastern Ontario

Coron: Coronavirus

Entero: Enterovirus

hMPV: human metapneumovirus

HSC: Health Sciences Centre

N.A.: Not Applicable

P.H.L.: Public Health Laboratory

P.H.O.L.: Public Health Ontario Laboratory

PIV: Parainfluenza

Rhino: Rhinovirus

RSV: Respiratory syncytial virus

UHN: University Health Network

## Notes:

Specimens from Yukon (YT), Northwest Territories (NT) and Nunavut (NU) are sent to reference laboratories in other provinces. Results reported for the Territories reflect the number of specimens that are identified as originating from YT, NT or NU.

Delays in the reporting of data may cause data to change retrospectively.

Due to reporting delays, the sum of weekly report totals do not add up to cumulative totals.