

Respiratory Virus Detections in Canada

Respiratory Virus Report, Week 20 - ending May 18, 2019

The Respiratory Virus Detection Surveillance System collects data from select laboratories across Canada on the number of tests performed and the number of tests positive for influenza and other respiratory viruses. Data are reported on a weekly basis year-round to the Centre for Immunization and Respiratory Infectious Diseases (CIRID), Public Health Agency of Canada. These data are also summarized in the weekly FluWatch report.

Table 1: Respiratory Virus Detections/Isolations for the week ending May 18, 2019 (Reporting Week 201920)

Reporting Laboratory	Flu Tested	A(H1N1)pdm09 Positive	A(H3) Positive	A(UnS) Positive	Total Flu A Positive	Total Flu B Positive	RSV Tested	RSV Positive	PIV Tested	PIV 1 Positive	PIV 2 Positive	PIV 3 Positive	PIV 4 Positive	Other PIV Positive	Adeno Tested	Adeno Positive	hMPV Tested	hMPV Positive	Entero/Rhino Tested	Entero/Rhino Positive	Coron Tested	Coron Positive
Newfoundland	77	0	0	4	4	0	77	1	77	1	0	3	0	0	77	1	77	12	77	3	N.A.	N.A.
Prince Edward Island	12	0	0	0	0	1	12	0	1	0	0	0	0	0	1	0	1	0	1	0	1	0
Nova Scotia	64	0	0	0	0	1	65	5	10	0	0	1	0	0	10	1	10	0	10	1	10	0
New Brunswick	266	9	2	3	14	22	266	11	85	0	0	14	0	0	85	1	85	4	85	10	85	0
Atlantic	419	9	2	7	18	24	420	17	173	1	0	18	0	0	173	3	173	16	173	14	96	0
Région Nord-Est	135	0	0	6	6	3	111	12	0	0	0	0	0	0	0	0	0	0	N.A.	N.A.	0	0
Québec-Chaudière-Appalaches	253	0	0	15	15	11	256	7	65	0	0	5	0	0	67	3	56	5	N.A.	N.A.	55	0
Centre-du-Québec	270	0	0	11	11	11	241	3	0	0	0	0	0	0	0	0	0	0	N.A.	N.A.	0	0
Montréal-Laval	815	0	0	38	38	22	803	5	478	4	0	39	0	0	478	20	474	20	N.A.	N.A.	474	4
Ouest du Québec	205	0	0	15	15	19	197	1	0	0	0	0	0	0	0	0	0	0	N.A.	N.A.	0	0
Montréal	147	0	0	8	8	2	147	4	0	0	0	0	0	0	0	0	0	0	N.A.	N.A.	0	0
Province of Québec	1825	0	0	93	93	68	1755	32	543	4	0	44	0	0	545	23	530	25	N.A.	N.A.	529	4
Ottawa P.H.L.	7	0	2	0	2	0	7	0	1	0	0	0	0	0	1	0	1	0	0	0	0	0
CHEO - Ottawa	141	0	0	7	7	5	141	2	14	0	0	1	0	0	14	1	14	0	14	2	14	0
Kingston P.H.L.	14	0	0	0	0	0	14	0	8	0	0	0	0	0	8	0	8	0	0	0	0	0
UHN / Mount Sinai Hospital	0	0	0	0	0	0	0	0	0	0	0	0	0	0	0	0	0	0	N.A.	N.A.	N.A.	N.A.
P.H.O.L. - Toronto	377	2	29	1	32	4	377	3	321	1	0	17	0	0	321	1	311	14	10	0	0	0
Sick Kids Hospital - Toronto	53	0	2	0	2	0	53	2	53	1	0	1	1	0	53	2	53	7	53	14	53	0
Sunnybrook & Women's College HSC	49	0	1	0	1	0	49	0	49	2	0	5	0	0	49	0	49	3	49	5	49	1
Sault Ste. Marie P.H.L.	9	0	0	0	0	0	8	0	8	0	0	1	0	0	8	0	8	0	0	0	0	0
Timmins P.H.L.	13	2	0	0	2	0	3	0	3	0	0	0	0	0	3	0	3	0	0	0	0	0
St. Joseph's - London	85	0	0	1	1	0	85	0	34	0	0	0	0	0	34	0	34	4	16	4	16	0
London P.H.L.	60	0	2	0	2	0	60	0	55	0	0	3	0	0	55	0	50	3	5	0	0	0
Orillia P.H.L.	27	1	4	0	5	0	27	0	10	0	0	1	0	0	10	0	10	0	0	0	0	0
Thunder Bay P.H.L.	3	1	0	0	1	0	0	0	0	0	0	0	0	0	0	0	0	0	0	0	0	0
Sudbury P.H.L.	10	0	1	0	1	0	10	0	9	0	0	1	0	0	9	0	9	0	0	0	0	0
Hamilton P.H.L.	72	0	4	0	4	1	72	0	67	0	0	1	0	0	67	2	65	1	2	0	0	0
Peterborough P.H.L.	24	0	0	0	0	0	24	0	10	0	0	0	0	0	10	0	10	0	0	0	0	0
Province of Ontario	944	6	45	9	60	10	930	7	642	4	0	31	1	0	642	6	625	32	149	25	132	1
Manitoba	220	4	12	2	18	7	192	9	113	1	0	15	0	0	113	2	81	1	113	29	81	3
Regina	151	2	5	0	7	1	151	3	151	0	1	8	0	0	151	2	151	11	151	26	151	25
Saskatoon	80	0	0	1	1	4	80	0	80	0	0	1	0	0	80	2	80	3	80	17	80	4
Province of Saskatchewan	231	2	5	1	8	5	231	3	231	0	1	9	0	0	231	4	231	14	231	43	231	29
Province of Alberta	805	4	69	19	92	18	728	0	728	5	2	71	2	0	728	15	728	31	728	119	728	11
Prairies	1256	10	86	22	118	30	1151	12	1072	6	3	95	2	0	1072	21	1040	46	1072	191	1040	43
British Columbia	353	2	22	28	52	2	353	7	189	2	0	21	0	0	189	2	189	1	152	41	152	8
Yukon	3	0	0	0	0	0	3	0	N.A.	N.A.	N.A.	N.A.	N.A.	N.A.	N.A.	N.A.	N.A.	N.A.	N.A.	N.A.	N.A.	N.A.
Northwest Territories	8	0	0	0	0	0	8	0	8	1	0	0	0	0	8	0	8	0	8	1	8	0
Nunavut	1	0	0	0	0	0	1	0	1	0	0	0	0	0	1	0	1	0	1	0	1	0
Territories	12	0	0	0	0	0	12	0	9	1	0	0	0	0	9	0	9	0	9	1	9	0
CANADA	4809	27	155	159	341	134	4621	75	2628	18	3	209	3	0	2630	55	2566	120	1555	272	1958	56

Specimens from Yukon (YT), Northwest Territories (NT) and Nunavut (NU) are sent to reference laboratories in other provinces and reported results reflect specimens identified as originating from YT, NT or NU.

Results from British Columbia comprise of specimens from the following sites: BC Children's and Women's Hospital, Powell River Hospital, St. Paul's Hospital, Vancouver General Hospital, Victoria General Hospital, Interior Health Authority sites and Northern Health Authority sites.

Delays in the reporting of data may cause data to change retrospectively.

Table 2: Respiratory Virus Detections/Isolations for the period August 26, 2018 - May 18, 2019 (Reporting Weeks 201835-201920)

Reporting Laboratory	Flu Tested	A(H1N1)pdm09 Positive	A(H3) Positive	A(UnS) Positive	Total Flu A Positive	Total Flu B Positive	RSV Tested	RSV Positive	PIV Tested	PIV 1 Positive	PIV 2 Positive	PIV 3 Positive	PIV 4 Positive	Other PIV Positive	Adeno Tested	Adeno Positive	hMPV Tested	hMPV Positive	Entero/Rhino Tested	Entero/Rhino Positive	Coron Tested	Coron Positive	
Newfoundland	4967	1	0	1028	1029	4	4967	478	4967	9	58	163	0	0	4967	38	4967	201	4967	317	N.A.	N.A.	
Prince Edward Island	1244	221	56	1	278	2	1242	139	84	1	0	2	3	0	79	5	79	3	79	22	79	3	
Nova Scotia	3958	0	0	784	784	19	3967	393	527	0	4	28	2	0	527	1	527	8	527	66	527	11	
New Brunswick	13870	240	36	2574	2850	322	13869	1214	3483	0	18	108	41	0	3483	124	3483	144	3483	378	3483	174	
Atlantic	24039	462	92	4387	4941	347	24045	2224	9061	10	80	301	46	0	9056	168	9056	356	9056	783	4089	188	
Région Nord-Est	9201	0	0	1580	1580	56	7240	692	0	0	0	0	0	0	0	0	0	0	0	N.A.	N.A.	0	0
Québec-Chaudière-Appalaches	15794	0	0	3134	3134	70	16042	1571	3013	8	32	64	9	0	3118	104	2533	45	N.A.	N.A.	2359	29	
Centre-du-Québec	18301	0	0	3639	3639	203	14731	1584	0	0	0	0	0	0	36	0	0	0	N.A.	N.A.	0	0	
Montréal-Laval	39957	0	0	4617	4617	276	38721	2975	20739	86	152	371	39	0	20739	596	20345	461	N.A.	N.A.	20294	723	
Ouest du Québec	12725	0	0	2689	2689	148	11667	1400	0	0	0	0	0	0	0	0	0	0	N.A.	N.A.	0	0	
Montérégie	8876	0	0	1381	1382	45	8466	677	0	0	0	0	0	0	0	0	0	0	N.A.	N.A.	0	0	
Province of Québec	104854	0	0	17040	17041	798	96867	8899	23752	94	184	435	48	0	23893	700	22878	506	N.A.	N.A.	22653	752	
Ottawa P.H.L.	946	91	70	22	183	4	941	88	536	0	3	8	0	0	536	1	512	9	29	0	0	0	
CHEO - Ottawa	7955	0	0	849	849	34	7954	922	855	4	10	21	6	0	856	27	855	17	848	205	827	39	
Kingston P.H.L.	962	67	71	12	150	14	962	62	676	0	4	17	0	0	676	1	641	7	98	0	0	0	
UHN / Mount Sinai Hospital	11125	5	15	735	755	47	11125	473	590	1	9	10	3	0	0	0	547	5	N.A.	N.A.	N.A.	N.A.	
P.H.O.L. - Toronto	13557	883	699	96	1678	65	13121	532	10669	20	61	98	0	0	10670	53	10358	160	498	0	0	0	
Sick Kids Hospital - Toronto	2646	112	45	122	279	35	2230	220	2230	21	37	57	26	0	2230	82	2230	98	2230	524	2230	135	
Sunnybrook & Women's College HSC	2579	72	100	11	183	6	2579	62	2579	7	5	21	1	0	2579	1	2579	82	2579	199	2579	97	
Sault Ste. Marie P.H.L.	430	47	40	3	90	0	361	17	332	0	3	2	0	0	332	0	326	5	10	0	0	0	
Timmins P.H.L.	384	60	9	1	70	0	306	10	304	0	7	5	0	0	304	0	297	1	18	0	0	0	
St. Joseph's - London	4562	3	0	528	531	5	4434	359	1526	5	6	37	15	0	1526	31	1526	51	1095	168	842	21	
London P.H.L.	4003	320	200	59	579	15	3965	328	2783	5	23	39	0	0	2783	19	2683	41	185	0	0	0	
Orillia P.H.L.	1208	67	73	23	163	2	1208	128	852	2	2	21	0	0	852	1	839	15	37	0	0	0	
Thunder Bay P.H.L.	445	32	45	8	85	0	349	18	336	1	1	15	0	0	335	4	320	9	26	0	0	0	
Sudbury P.H.L.	880	48	22	0	70	0	818	32	793	3	4	6	0	0	793	3	746	13	75	0	0	0	
Hamilton P.H.L.	3870	234	220	33	487	14	3772	135	3030	12	15	60	0	0	3030	23	2978	47	148	0	0	0	
Peterborough P.H.L.	1117	44	78	22	144	3	1113	49	860	2	4	5	0	0	860	0	850	12	13	0	0	0	
Province of Ontario	56669	2085	1687	2524	6296	244	55238	3435	28951	83	194	422	51	0	28362	246	28287	572	8107	1107	6703	302	
Manitoba	10350	327	115	728	1170	57	9857	602	4474	5	18	114	12	0	4474	45	2777	81	4474	507	2811	129	
Regina	8352	1433	149	155	1737	79	8352	545	10285	4	64	206	35	0	8352	126	8352	167	8352	1452	8352	294	
Saskatoon	6282	0	0	881	881	41	6282	440	6282	2	7	39	13	48	6282	52	6282	132	6282	420	6282	97	
Province of Saskatchewan	14634	1433	149	1036	2618	120	14634	985	16567	6	71	245	48	48	14634	178	14634	299	14634	1872	14634	391	
Province of Alberta	36257	3637	1206	2190	7033	313	29464	0	29464	44	232	851	244	0	29464	433	29464	860	29464	4320	29464	1344	
Prairies	61241	5397	1470	3954	10821	490	53955	1587	50505	55	321	1210	304	48	48572	656	46875	1240	48572	6699	46909	1864	
British Columbia	25521	3155	1551	1636	6342	231	25484	1564	10722	16	68	393	103	0	10722	148	10722	77	8151	1606	8151	480	
Yukon	368	65	15	35	115	0	368	18	N.A.	N.A.	N.A.	N.A.	N.A.	N.A.	N.A.	N.A.	N.A.	N.A.	N.A.	N.A.	N.A.	N.A.	
Northwest Territories	771	175	4	0	179	2	766	0	766	4	0	28	4	0	766	26	766	8	766	130	766	47	
Nunavut	114	20	0	0	20	0	114	0	114	4	0	3	0	0	114	17	113	0	114	29	113	9	
Territories	1253	260	19	35	314	2	1248	18	880	8	0	31	4	0	880	43	879	8	880	159	879	56	
CANADA	273577	11359	4819	29576	45755	2112	256837	17727	123871	266	847	2792	556	48	121485	1961	118697	2759	74766	10354	89384	3642	

Specimens from YT, NT and NU are sent to reference laboratories in other provinces and reported results reflect specimens identified as originating from YT, NT or NU.

Results from British Columbia comprise of specimens from the following sites: BC Children's and Women's Hospital, Powell River Hospital, St. Paul's Hospital, Vancouver General Hospital, Victoria General Hospital, Interior Health Authority sites and Northern Health Authority sites.

Delays in the reporting of data may cause data to change retrospectively.

Due to reporting delays, the sum of weekly report totals do not add up to cumulative totals.

Figure 1: Number positive laboratory tests for other respiratory viruses by report week, Canada, 2018-19

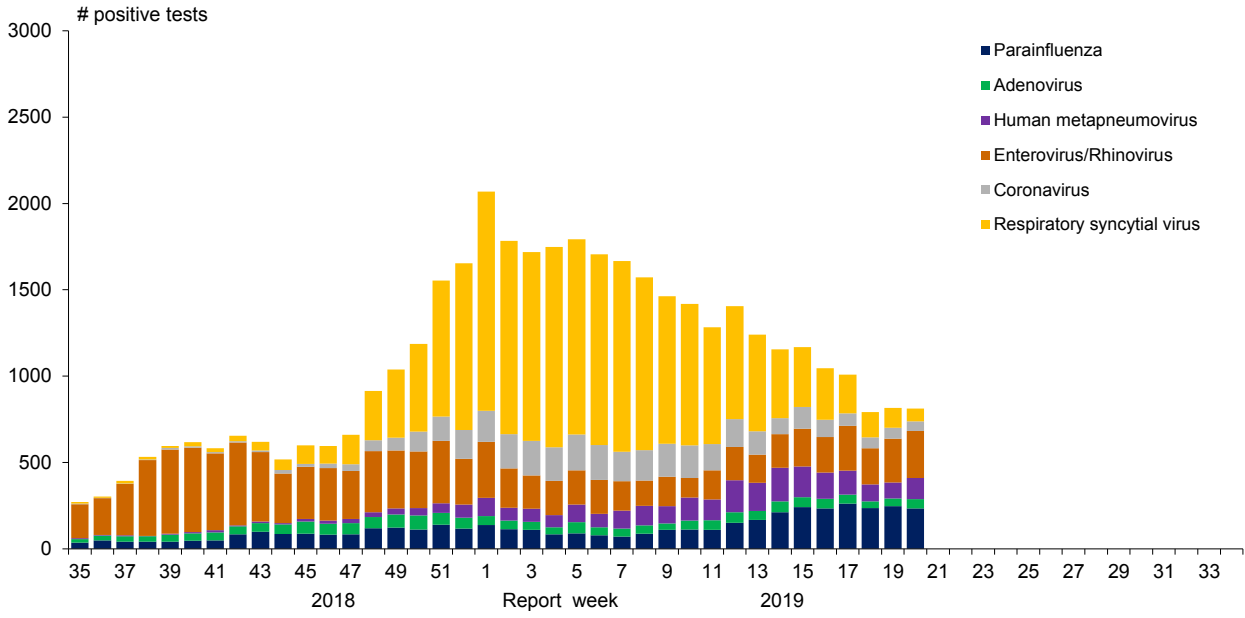


Figure 2: Positive Influenza Tests (%) in Canada by Region by Week of Report

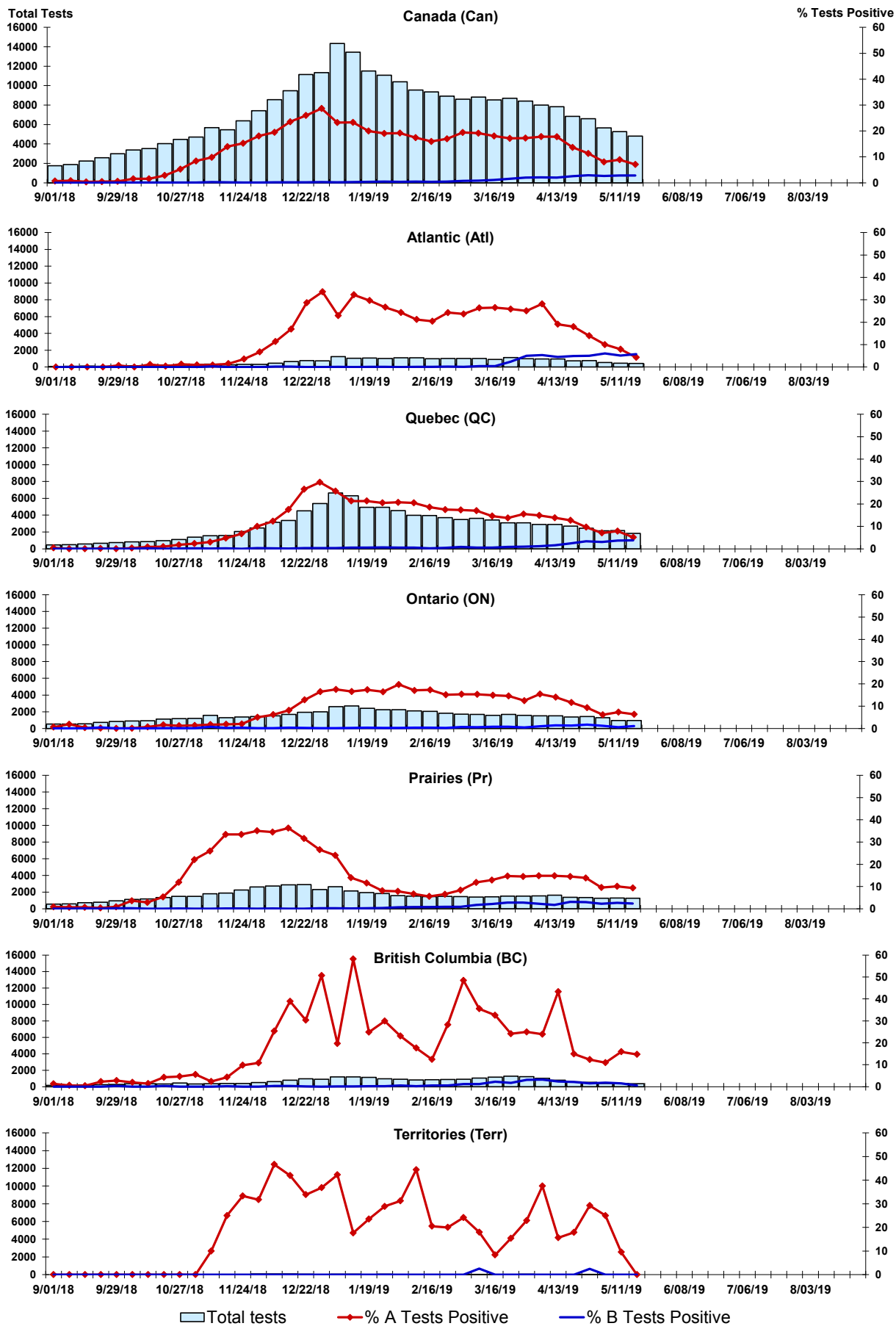


Figure 3: Positive Respiratory syncytial virus (RSV) Tests (%) in Canada by Region by Week of Report

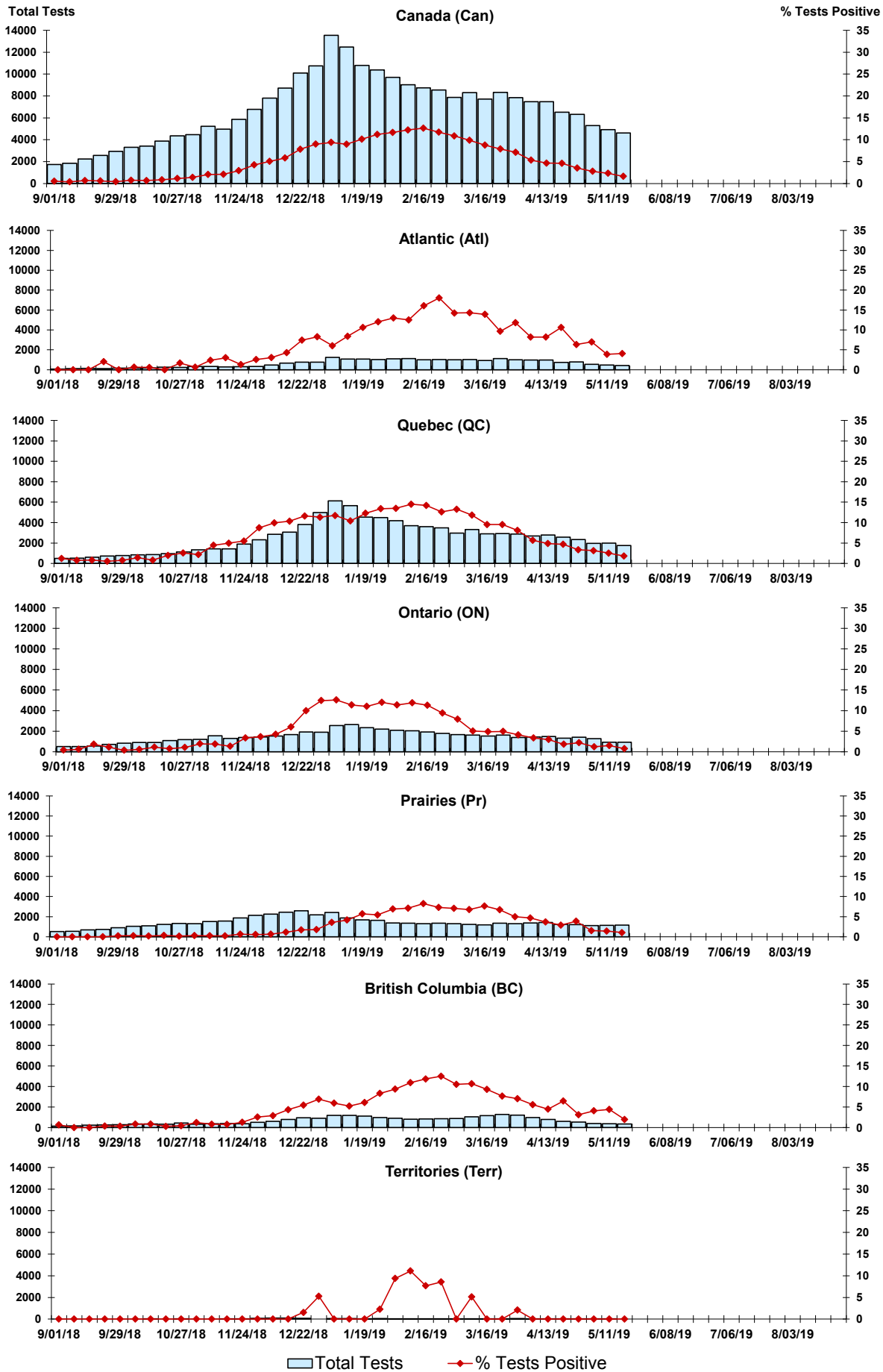


Figure 4: Positive Parainfluenza (PIV) Tests (%) in Canada by Region by Week of Report

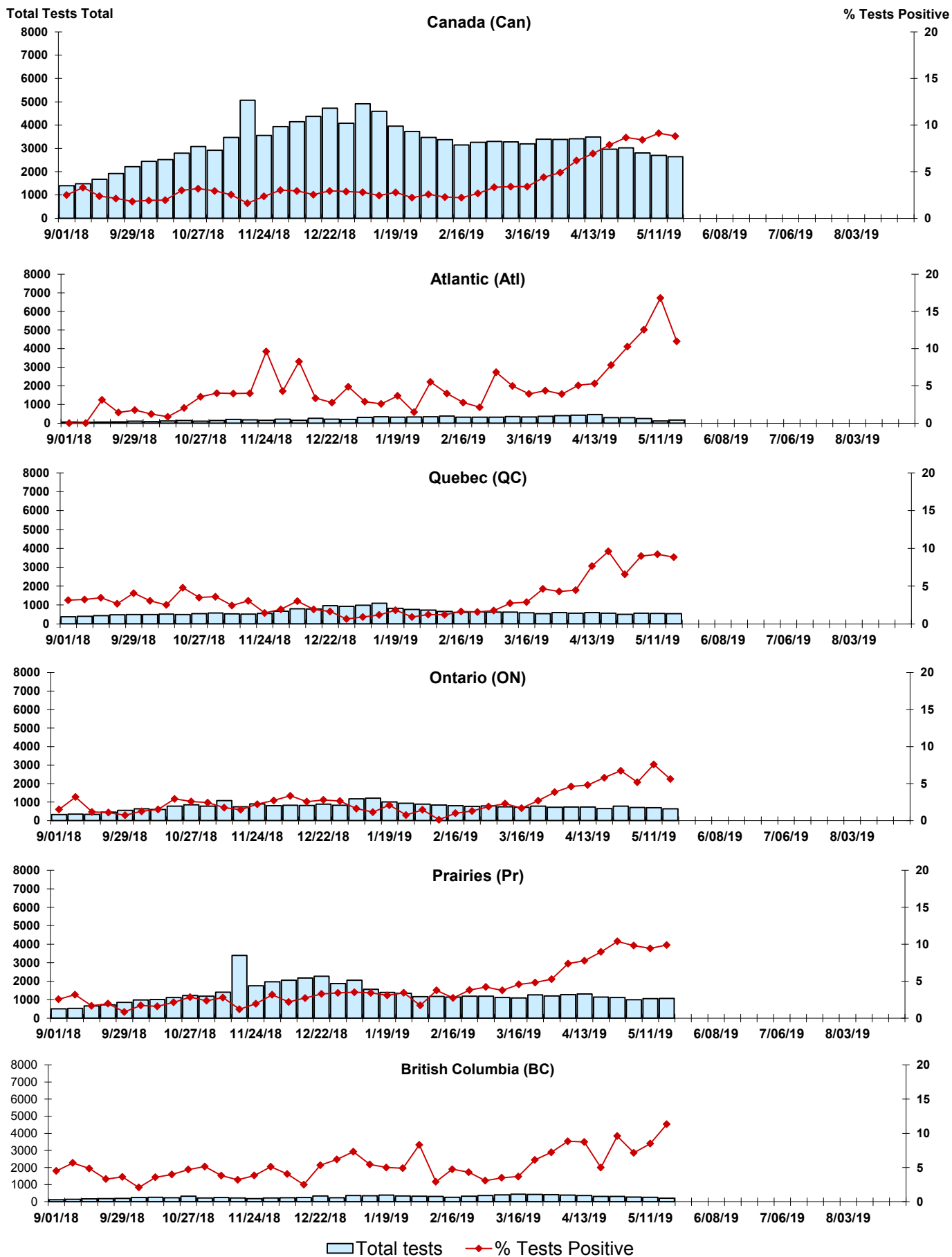


Figure 5: Positive Adenovirus (adeno) Tests (%) in Canada by Region by Week of Report

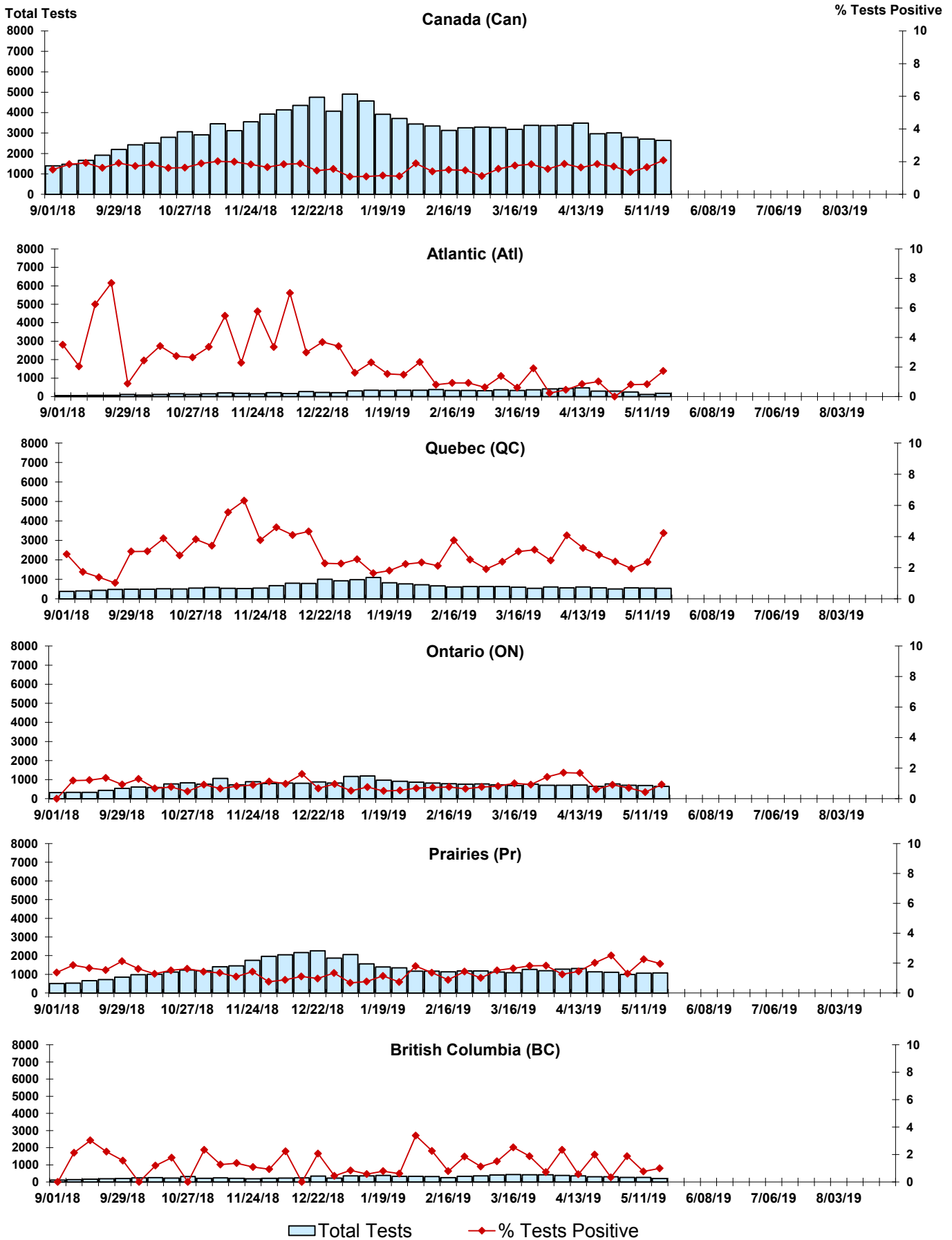
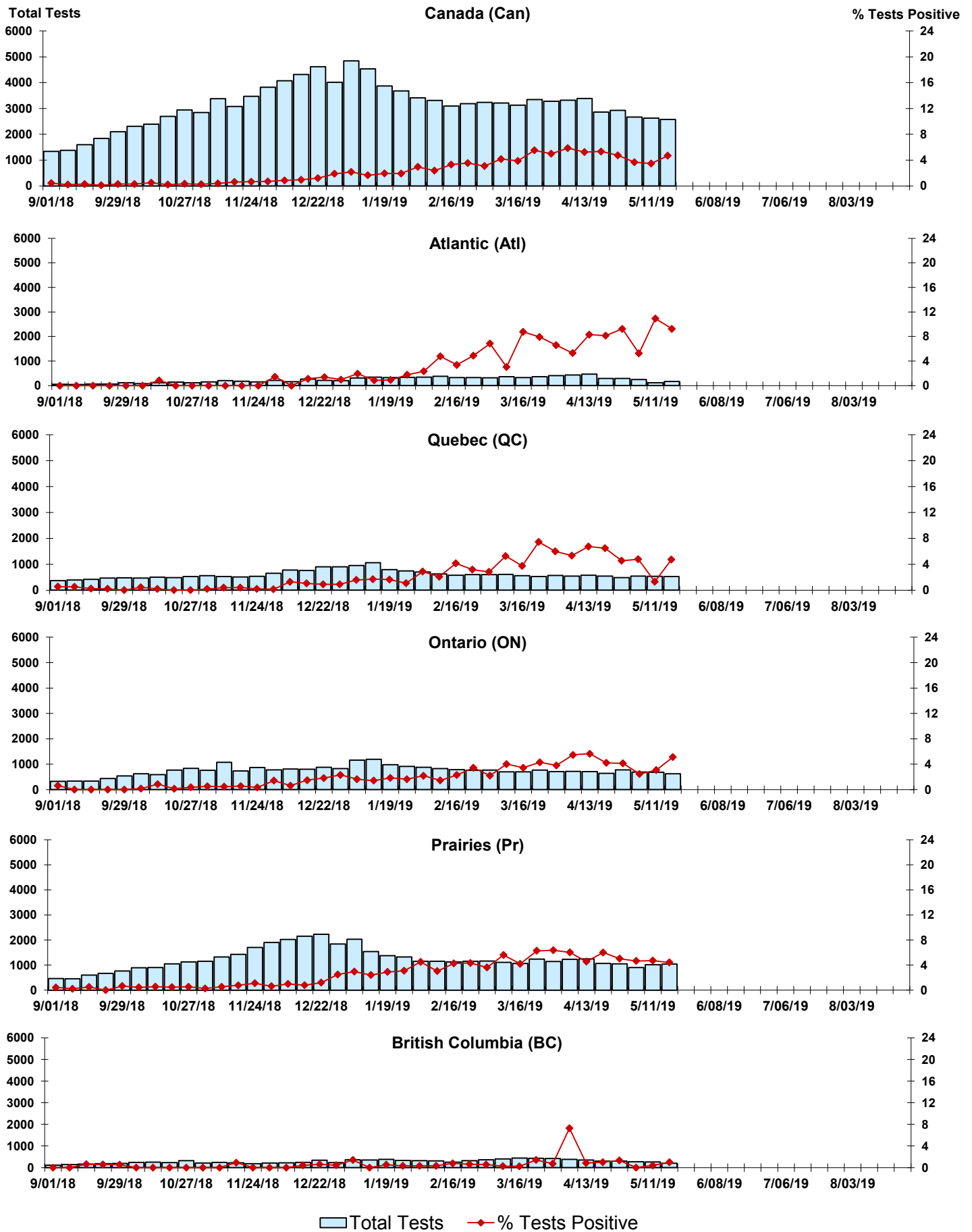


Figure 6: Positive human metapneumovirus (hMPV) Tests (%) in Canada by Region by Week of Report



Legend: █ Total Tests ◆ % Tests Positive

Figure 7: Positive Enterovirus/Rhinovirus (entero/rhino) Tests (%) in Canada by Region by Week of Report

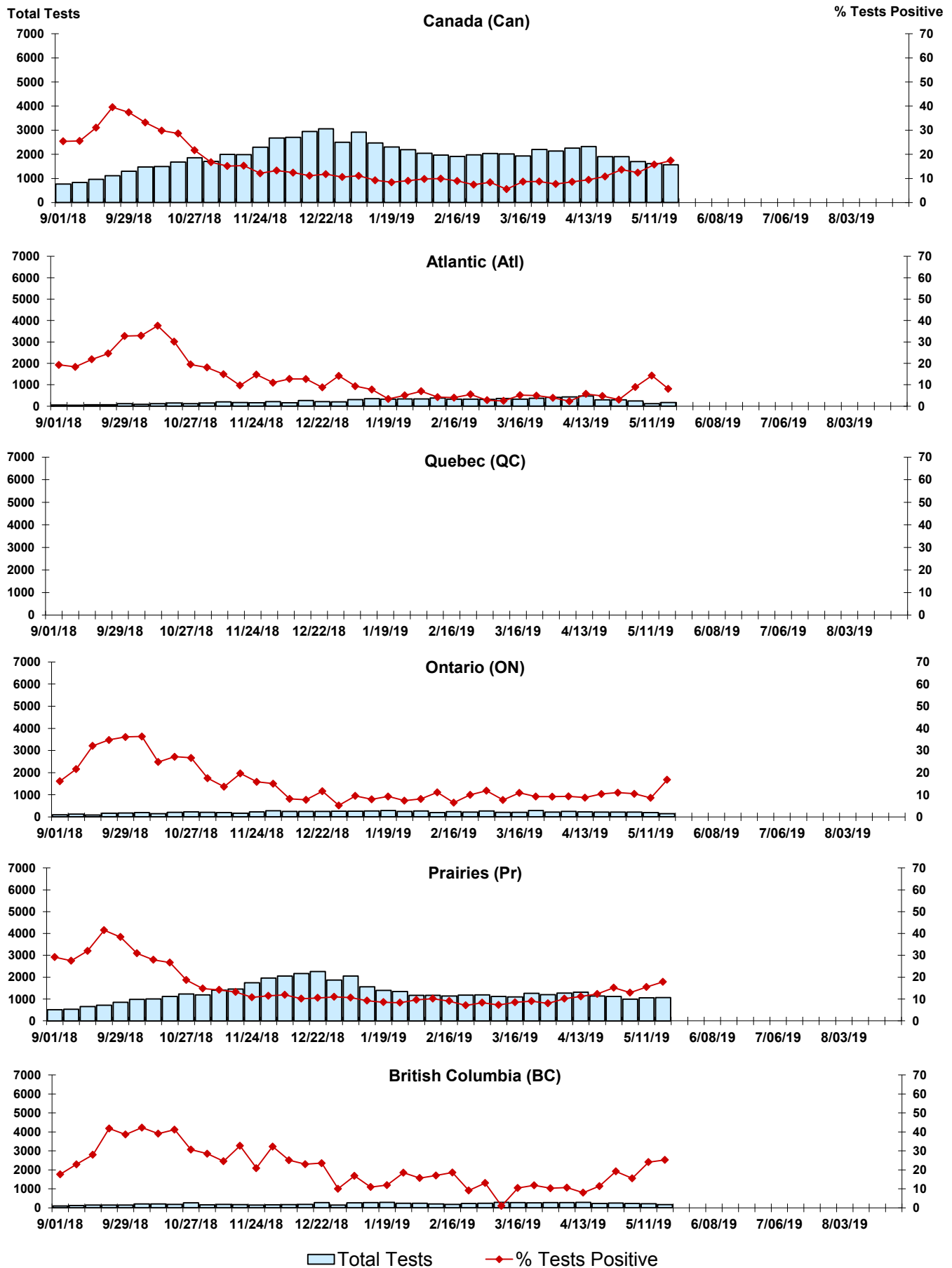
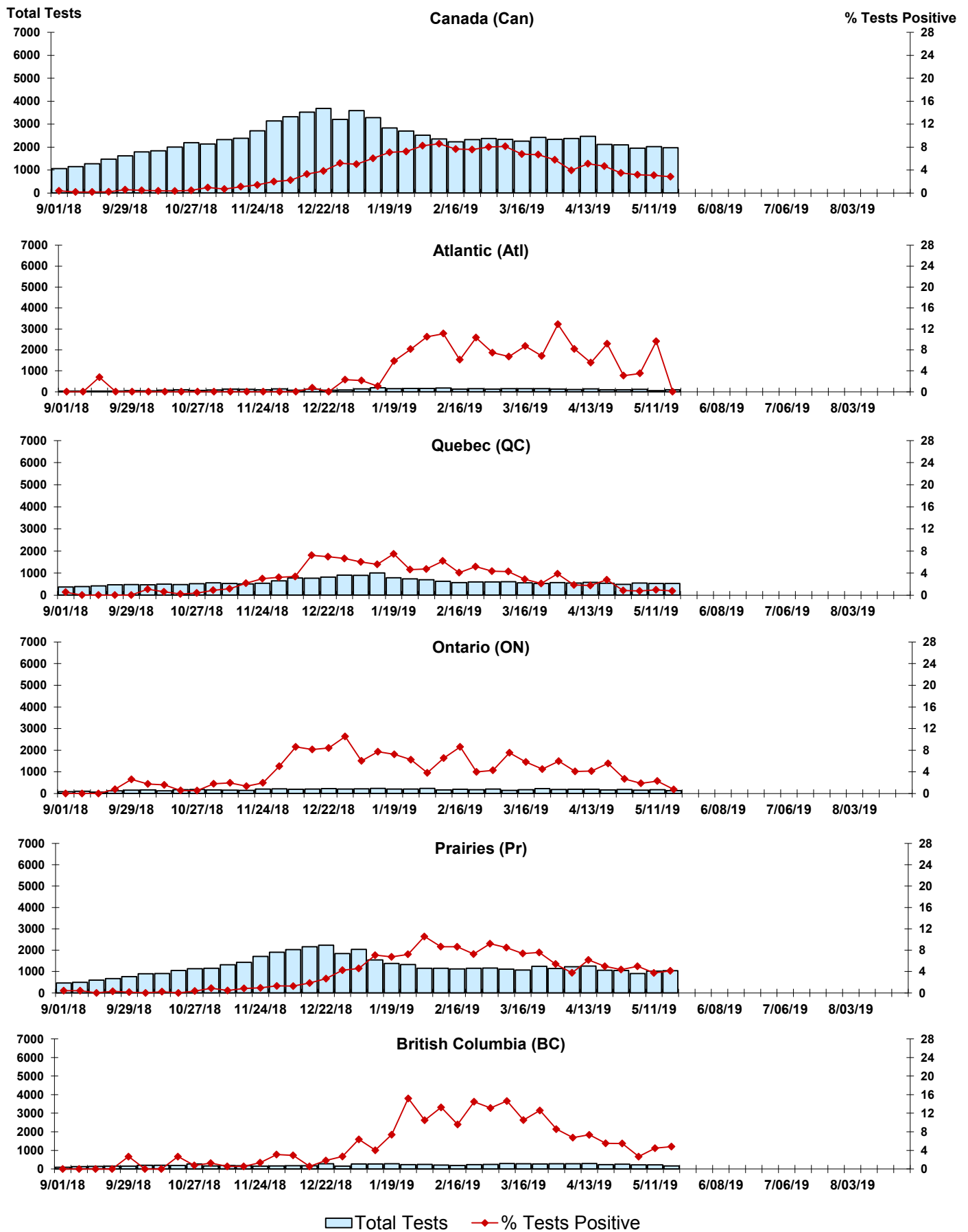


Figure 8: Positive Coronavirus (coron) Tests (%) in Canada by Region by Week of Report



Abbreviations:

A(H1N1)pdm09: Influenza A(H1N1)pdm09

A(H3): Influenza A(H3N2)

A (UnS): Influenza A (Unsubtyped)

Adeno: Adenovirus

CHEO: Children's Hospital of Eastern Ontario

Coron: Coronavirus

Entero: Enterovirus

hMPV: human metapneumovirus

HSC: Health Sciences Centre

N.A.: Not Applicable

P.H.L.: Public Health Laboratory

P.H.O.L.: Public Health Ontario Laboratory

PIV: Parainfluenza

Rhino: Rhinovirus

RSV: Respiratory syncytial virus

UHN: University Health Network

Notes:

Specimens from Yukon (YT), Northwest Territories (NT) and Nunavut (NU) are sent to reference laboratories in other provinces. Results reported for the Territories reflect the number of specimens that are identified as originating from YT, NT or NU.

Delays in the reporting of data may cause data to change retrospectively.

Due to reporting delays, the sum of weekly report totals do not add up to cumulative totals.