

# Respiratory Virus Detections in Canada

## Respiratory Virus Report, Week 22 - ending June 1, 2019

The Respiratory Virus Detection Surveillance System collects data from select laboratories across Canada on the number of tests performed and the number of tests positive for influenza and other respiratory viruses. Data are reported on a weekly basis year-round to the Centre for Immunization and Respiratory Infectious Diseases (CIRID), Public Health Agency of Canada. These data are also summarized in the weekly FluWatch report.

**Table 1: Respiratory Virus Detections/Isolations for the week ending June 1, 2019 (Reporting Week 201922)**

Reporting Laboratory	Flu Tested	A(H1N1)pdm09 Positive	A(H3) Positive	A(UnS) Positive	Total Flu A Positive	Total Flu B Positive	RSV Tested	RSV Positive	PIV Tested	PIV 1 Positive	PIV 2 Positive	PIV 3 Positive	PIV 4 Positive	Other PIV Positive	Adeno Tested	Adeno Positive	hMPV Tested	hMPV Positive	Entero/Rhino Tested	Entero/Rhino Positive	Coron Tested	Coron Positive
Newfoundland	63	0	0	2	2	0	63	4	63	1	0	7	0	0	63	3	63	7	63	8	N.A.	N.A.
Prince Edward Island	6	0	0	0	0	0	6	0	2	0	0	0	0	0	2	0	2	0	2	0	2	0
Nova Scotia	40	0	0	1	1	0	41	7	2	0	0	1	1	0	2	0	2	0	2	0	2	0
New Brunswick	171	5	0	1	6	8	171	2	58	0	0	6	1	0	58	0	58	2	58	6	58	1
<b>Atlantic</b>	<b>280</b>	<b>5</b>	<b>0</b>	<b>4</b>	<b>9</b>	<b>8</b>	<b>281</b>	<b>13</b>	<b>125</b>	<b>1</b>	<b>0</b>	<b>14</b>	<b>2</b>	<b>0</b>	<b>125</b>	<b>3</b>	<b>125</b>	<b>9</b>	<b>125</b>	<b>14</b>	<b>62</b>	<b>1</b>
Région Nord-Est	93	0	0	1	1	3	75	1	0	0	0	0	0	0	0	0	0	0	N.A.	N.A.	0	0
Québec-Chaudière-Appalaches	243	0	0	1	1	3	249	4	66	1	0	10	0	0	66	3	57	1	N.A.	N.A.	57	0
Centre-du-Québec	151	0	0	0	0	4	118	0	0	0	0	0	0	0	0	0	0	0	N.A.	N.A.	0	0
Montréal-Laval	646	0	0	13	13	19	647	7	414	6	1	26	0	0	414	11	402	10	N.A.	N.A.	402	1
Ouest du Québec	98	0	0	3	3	8	97	0	0	0	0	0	0	0	0	0	0	0	N.A.	N.A.	0	0
Montréal	118	0	0	6	6	4	118	0	0	0	0	0	0	0	0	0	0	0	N.A.	N.A.	0	0
<b>Province of Québec</b>	<b>1349</b>	<b>0</b>	<b>0</b>	<b>24</b>	<b>24</b>	<b>41</b>	<b>1304</b>	<b>12</b>	<b>480</b>	<b>7</b>	<b>1</b>	<b>36</b>	<b>0</b>	<b>0</b>	<b>480</b>	<b>14</b>	<b>459</b>	<b>11</b>	<b>N.A.</b>	<b>N.A.</b>	<b>459</b>	<b>1</b>
Ottawa P.H.L.	13	0	0	0	0	0	13	0	9	0	0	0	0	0	9	0	6	0	3	0	0	0
CHEO - Ottawa	122	0	0	0	0	4	122	3	122	0	0	2	0	0	23	0	23	1	23	3	23	0
Kingston P.H.L.	10	0	0	0	0	0	10	1	6	0	0	0	0	0	6	0	6	0	0	0	0	0
UHN / Mount Sinai Hospital	180	1	0	3	4	0	180	1	9	0	0	1	0	0	0	0	12	1	N.A.	N.A.	N.A.	N.A.
P.H.O.L. - Toronto	290	3	1	1	5	3	289	0	271	1	0	13	0	0	271	3	263	4	8	0	0	0
Sick Kids Hospital - Toronto	63	2	1	0	3	2	63	1	63	1	0	4	0	0	63	2	63	4	63	18	63	0
Sunnybrook & Women's College HSC	56	0	0	0	0	0	56	0	56	2	0	4	0	0	56	0	56	1	56	3	56	0
Sault Ste. Marie P.H.L.	4	0	0	0	0	0	4	1	3	0	0	0	0	0	3	0	3	0	0	0	0	0
Timmins P.H.L.	8	0	0	0	0	0	8	0	8	0	0	1	0	0	8	0	8	0	0	0	0	0
St. Joseph's - London	32	0	0	0	0	0	32	0	32	0	0	0	0	0	32	1	32	2	31	4	31	0
London P.H.L.	66	0	1	1	2	0	66	0	63	1	0	1	0	0	63	1	57	0	6	0	0	0
Orillia P.H.L.	21	0	0	0	0	0	21	0	18	0	0	1	0	0	18	0	18	1	0	0	0	0
Thunder Bay P.H.L.	3	0	0	0	0	0	3	0	3	0	0	0	0	0	3	0	3	0	0	0	0	0
Sudbury P.H.L.	15	0	0	0	0	0	15	0	14	0	0	1	0	0	14	0	14	0	0	0	0	0
Hamilton P.H.L.	71	1	1	0	2	0	70	0	65	0	0	3	0	0	65	0	63	3	2	0	0	0
Peterborough P.H.L.	13	0	0	0	0	0	13	0	11	0	0	0	0	0	11	0	11	0	0	0	0	0
<b>Province of Ontario</b>	<b>967</b>	<b>7</b>	<b>4</b>	<b>5</b>	<b>16</b>	<b>9</b>	<b>965</b>	<b>7</b>	<b>753</b>	<b>5</b>	<b>0</b>	<b>31</b>	<b>0</b>	<b>0</b>	<b>645</b>	<b>7</b>	<b>638</b>	<b>17</b>	<b>204</b>	<b>29</b>	<b>185</b>	<b>0</b>
Manitoba	215	1	2	2	5	4	190	7	110	0	0	9	0	0	110	1	69	1	110	19	69	0
Regina	66	0	0	1	1	0	66	2	66	0	0	9	0	0	66	6	66	2	66	20	66	1
Saskatoon	73	0	0	0	0	2	73	0	73	0	0	2	0	0	73	2	73	1	73	11	73	1
Province of Saskatchewan	139	0	0	1	1	2	139	2	139	0	0	11	0	0	139	8	139	3	139	31	139	2
Province of Alberta	556	0	37	8	45	9	489	0	489	6	1	38	1	0	489	8	489	16	489	84	489	4
<b>Prairies</b>	<b>910</b>	<b>1</b>	<b>39</b>	<b>11</b>	<b>51</b>	<b>15</b>	<b>818</b>	<b>9</b>	<b>738</b>	<b>6</b>	<b>1</b>	<b>58</b>	<b>1</b>	<b>0</b>	<b>738</b>	<b>17</b>	<b>697</b>	<b>20</b>	<b>738</b>	<b>134</b>	<b>697</b>	<b>6</b>
<b>British Columbia</b>	<b>242</b>	<b>2</b>	<b>7</b>	<b>4</b>	<b>13</b>	<b>1</b>	<b>242</b>	<b>3</b>	<b>205</b>	<b>1</b>	<b>1</b>	<b>21</b>	<b>0</b>	<b>0</b>	<b>205</b>	<b>2</b>	<b>205</b>	<b>0</b>	<b>176</b>	<b>43</b>	<b>176</b>	<b>1</b>
Yukon	7	0	1	1	2	0	7	0	N.A.	N.A.	N.A.	N.A.	N.A.	N.A.	N.A.	N.A.	N.A.	N.A.	N.A.	N.A.	N.A.	N.A.
Northwest Territories	4	0	0	0	0	0	4	0	4	0	0	0	0	0	4	0	4	0	4	1	4	0
Nunavut	1	0	0	0	0	0	1	0	1	0	0	0	0	0	1	0	1	0	1	1	1	0
<b>Territories</b>	<b>12</b>	<b>0</b>	<b>1</b>	<b>1</b>	<b>2</b>	<b>0</b>	<b>12</b>	<b>0</b>	<b>5</b>	<b>0</b>	<b>0</b>	<b>0</b>	<b>0</b>	<b>0</b>	<b>5</b>	<b>0</b>	<b>5</b>	<b>0</b>	<b>5</b>	<b>2</b>	<b>5</b>	<b>0</b>
<b>CANADA</b>	<b>3760</b>	<b>15</b>	<b>51</b>	<b>49</b>	<b>115</b>	<b>74</b>	<b>3622</b>	<b>44</b>	<b>2306</b>	<b>20</b>	<b>3</b>	<b>160</b>	<b>3</b>	<b>0</b>	<b>2198</b>	<b>43</b>	<b>2129</b>	<b>57</b>	<b>1248</b>	<b>222</b>	<b>1584</b>	<b>9</b>

Specimens from Yukon (YT), Northwest Territories (NT) and Nunavut (NU) are sent to reference laboratories in other provinces and reported results reflect specimens identified as originating from YT, NT or NU.

Results from British Columbia comprise of specimens from the following sites: BC Children's and Women's Hospital, Powell River Hospital, St. Paul's Hospital, Vancouver General Hospital, Victoria General Hospital, Interior Health Authority sites and Northern Health Authority sites.

Delays in the reporting of data may cause data to change retrospectively.

**Table 2: Respiratory Virus Detections/Isolations for the period August 26, 2018 - June 1, 2019 (Reporting Weeks 201835-201922)**

Reporting Laboratory	Flu Tested	A(H1N1)pdm09 Positive	A(H3) Positive	A(UnS) Positive	Total Flu A Positive	Total Flu B Positive	RSV Tested	RSV Positive	PIV Tested	PIV 1 Positive	PIV 2 Positive	PIV 3 Positive	PIV 4 Positive	Other PIV Positive	Adeno Tested	Adeno Positive	hMPV Tested	hMPV Positive	Entero/Rhino Tested	Entero/Rhino Positive	Coron Tested	Coron Positive
Newfoundland	5101	1	0	1032	1033	4	5101	484	5101	10	58	175	0	0	5101	42	5101	214	5101	330	N.A.	N.A.
Prince Edward Island	1255	221	56	1	278	2	1253	140	86	1	0	2	3	0	81	5	81	3	81	22	81	3
Nova Scotia	4045	0	0	786	786	21	4055	405	534	0	4	30	3	0	534	1	534	8	534	66	534	11
New Brunswick	14242	245	37	2589	2871	348	14241	1225	3631	0	18	125	42	0	3631	125	3631	148	3631	396	3631	176
<b>Atlantic</b>	<b>24643</b>	<b>467</b>	<b>93</b>	<b>4408</b>	<b>4968</b>	<b>375</b>	<b>24650</b>	<b>2254</b>	<b>9352</b>	<b>11</b>	<b>80</b>	<b>332</b>	<b>48</b>	<b>0</b>	<b>9347</b>	<b>173</b>	<b>9347</b>	<b>373</b>	<b>9347</b>	<b>814</b>	<b>4246</b>	<b>190</b>
Région Nord-Est	9371	0	0	1584	1584	61	7368	697	0	0	0	0	0	0	0	0	0	0	N.A.	N.A.	0	0
Québec-Chaudière-Appalaches	16188	0	0	3138	3138	78	16458	1581	3157	9	32	83	9	0	3260	109	2653	48	N.A.	N.A.	2479	31
Centre-du-Québec	18639	0	0	3646	3646	213	15001	1588	0	0	0	0	0	0	36	0	0	0	N.A.	N.A.	0	0
Montréal-Laval	41287	0	0	4650	4650	325	40040	2991	21553	97	153	423	39	0	21553	612	21141	482	N.A.	N.A.	21090	724
Ouest du Québec	12980	0	0	2697	2697	171	11887	1404	0	0	0	0	0	0	0	0	0	0	N.A.	N.A.	0	0
Montérégie	9077	0	0	1392	1393	50	8665	678	0	0	0	0	0	0	0	0	0	0	N.A.	N.A.	0	0
<b>Province of Québec</b>	<b>107542</b>	<b>0</b>	<b>0</b>	<b>17107</b>	<b>17108</b>	<b>898</b>	<b>99419</b>	<b>8939</b>	<b>24710</b>	<b>106</b>	<b>185</b>	<b>506</b>	<b>48</b>	<b>0</b>	<b>24849</b>	<b>721</b>	<b>23794</b>	<b>530</b>	<b>N.A.</b>	<b>N.A.</b>	<b>23569</b>	<b>755</b>
Ottawa P.H.L.	962	91	70	22	183	4	957	88	552	0	3	8	0	0	552	1	523	9	34	0	0	0
CHEO - Ottawa	8215	0	0	858	858	40	8214	929	1115	4	10	24	6	0	896	28	895	18	888	213	867	39
Kingston P.H.L.	981	67	71	12	150	14	981	63	697	0	4	18	0	0	697	1	662	7	100	0	0	0
UHN / Mount Sinai Hospital	11959	6	15	748	769	52	11959	483	647	1	9	11	3	0	0	0	595	8	N.A.	N.A.	N.A.	N.A.
P.H.O.L. - Toronto	14186	888	708	98	1694	78	13749	538	11258	21	61	131	0	0	11259	57	10929	175	526	0	0	0
Sick Kids Hospital - Toronto	2748	114	46	122	282	39	2332	222	2332	22	37	62	26	0	2332	84	2332	102	2332	556	2332	135
Sunnybrook & Women's College HSC	2686	73	100	11	184	6	2686	62	2686	12	5	29	1	0	2686	1	2686	85	2686	204	2686	98
Sault Ste. Marie P.H.L.	438	47	40	3	90	0	370	18	340	0	3	2	0	0	340	0	334	5	10	0	0	0
Timmins P.H.L.	395	60	10	1	71	0	324	12	322	0	7	6	0	0	322	0	315	1	18	0	0	0
St. Joseph's - London	4665	3	0	530	533	6	4537	361	1584	5	6	39	15	0	1584	32	1584	53	1138	174	885	21
London P.H.L.	4138	320	205	60	585	18	4100	333	2902	6	23	46	0	0	2902	20	2788	42	208	0	0	0
Orillia P.H.L.	1256	67	75	23	165	2	1256	128	904	2	2	23	0	0	904	1	891	17	37	0	0	0
Thunder Bay P.H.L.	449	32	45	8	85	0	355	18	342	1	1	15	0	0	341	4	326	9	26	0	0	0
Sudbury P.H.L.	911	48	22	0	70	0	849	33	822	4	4	8	0	0	822	3	774	13	76	0	0	0
Hamilton P.H.L.	4004	235	224	33	492	14	3905	136	3153	12	15	69	0	0	3153	24	3099	51	161	0	0	0
Peterborough P.H.L.	1147	44	78	22	144	3	1143	49	902	3	4	7	0	0	902	0	890	12	15	0	0	0
<b>Province of Ontario</b>	<b>59140</b>	<b>2095</b>	<b>1709</b>	<b>2551</b>	<b>6355</b>	<b>276</b>	<b>57717</b>	<b>3473</b>	<b>30558</b>	<b>93</b>	<b>194</b>	<b>498</b>	<b>51</b>	<b>0</b>	<b>29692</b>	<b>256</b>	<b>29623</b>	<b>607</b>	<b>8485</b>	<b>1159</b>	<b>7007</b>	<b>303</b>
Manitoba	10711	329	122	729	1180	67	10175	617	4655	6	19	139	12	0	4655	46	2904	84	4655	548	2938	129
Regina	8486	1433	150	159	1742	80	8486	548	10419	4	64	222	35	0	8486	135	8486	174	8486	1492	8486	296
Saskatoon	6457	0	0	882	882	47	6457	441	6457	3	7	44	14	48	6457	57	6457	138	6457	449	6457	100
Province of Saskatchewan	14943	1433	150	1041	2624	127	14943	989	16876	7	71	266	49	48	14943	192	14943	312	14943	1941	14943	396
Province of Alberta	37487	3640	1297	2208	7145	335	30541	0	30541	56	235	948	247	0	30541	449	30541	911	30541	4480	30541	1356
<b>Prairies</b>	<b>63141</b>	<b>5402</b>	<b>1569</b>	<b>3978</b>	<b>10949</b>	<b>529</b>	<b>55659</b>	<b>1606</b>	<b>52072</b>	<b>69</b>	<b>325</b>	<b>1353</b>	<b>308</b>	<b>48</b>	<b>50139</b>	<b>687</b>	<b>48388</b>	<b>1307</b>	<b>50139</b>	<b>6969</b>	<b>48422</b>	<b>1881</b>
British Columbia	26094	3157	1565	1595	6317	235	26057	1570	11157	17	71	429	104	0	11157	155	11157	78	8515	1684	8515	489
Yukon	378	65	16	36	117	0	378	18	N.A.	N.A.	N.A.	N.A.	N.A.	N.A.	N.A.	N.A.	N.A.	N.A.	N.A.	N.A.	N.A.	N.A.
Northwest Territories	783	175	6	0	181	2	778	0	778	4	0	29	4	0	778	26	778	8	778	131	778	47
Nunavut	117	20	0	0	20	0	117	0	117	4	0	4	0	0	117	18	116	0	117	31	116	9
<b>Territories</b>	<b>1278</b>	<b>260</b>	<b>22</b>	<b>36</b>	<b>318</b>	<b>2</b>	<b>1273</b>	<b>18</b>	<b>895</b>	<b>8</b>	<b>0</b>	<b>33</b>	<b>4</b>	<b>0</b>	<b>895</b>	<b>44</b>	<b>894</b>	<b>8</b>	<b>895</b>	<b>162</b>	<b>894</b>	<b>56</b>
<b>CANADA</b>	<b>281838</b>	<b>11381</b>	<b>4958</b>	<b>29675</b>	<b>46015</b>	<b>2315</b>	<b>264775</b>	<b>17860</b>	<b>128744</b>	<b>304</b>	<b>855</b>	<b>3151</b>	<b>563</b>	<b>48</b>	<b>126079</b>	<b>2036</b>	<b>123203</b>	<b>2903</b>	<b>77381</b>	<b>10788</b>	<b>92653</b>	<b>3674</b>

Specimens from YT, NT and NU are sent to reference laboratories in other provinces and reported results reflect specimens identified as originating from YT, NT or NU.

Results from British Columbia comprise of specimens from the following sites: BC Children's and Women's Hospital, Powell River Hospital, St. Paul's Hospital, Vancouver General Hospital, Victoria General Hospital, Interior Health Authority sites and Northern Health Authority sites.

Delays in the reporting of data may cause data to change retrospectively.

Due to reporting delays, the sum of weekly report totals do not add up to cumulative totals.

Figure 1: Number positive laboratory tests for other respiratory viruses by report week, Canada, 2018-19

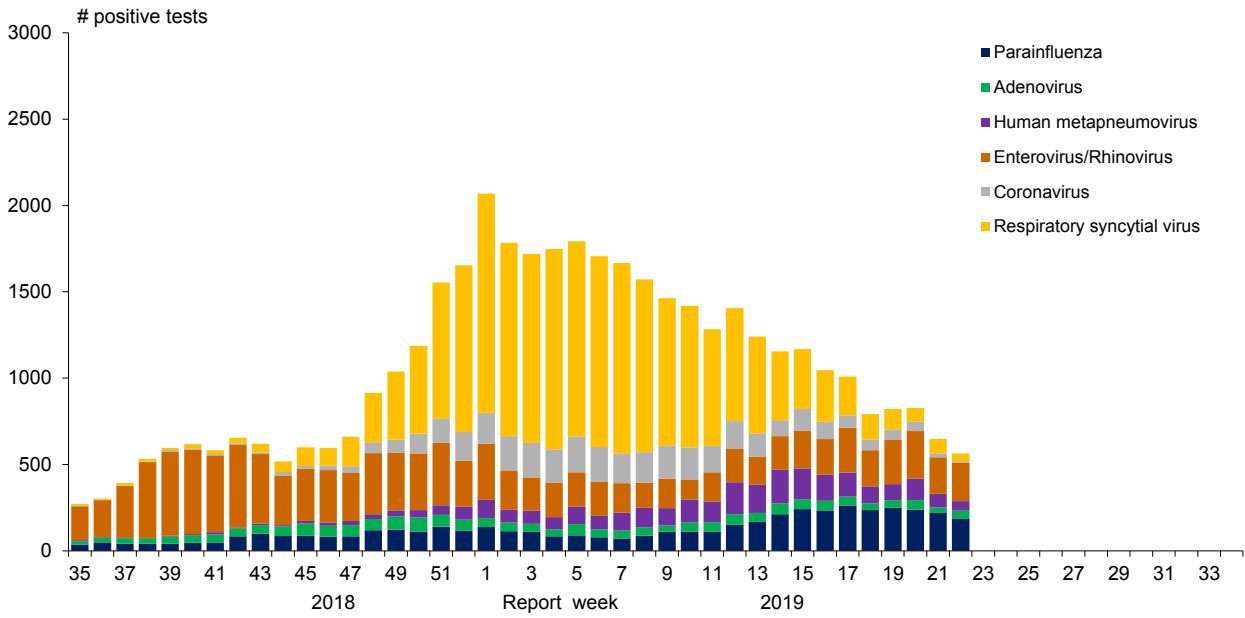


Figure 2: Positive Influenza Tests (%) in Canada by Region by Week of Report

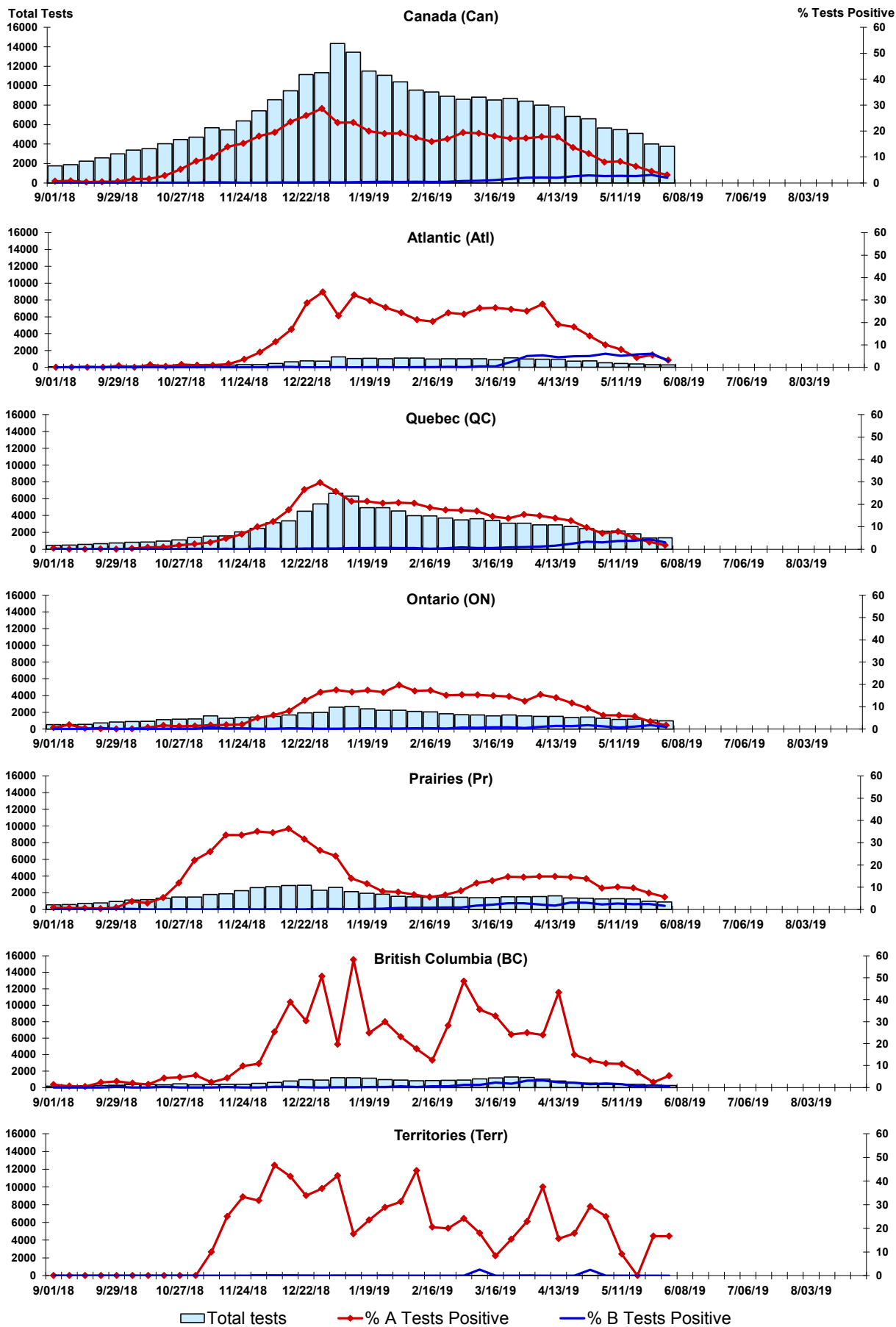


Figure 3: Positive Respiratory syncytial virus (RSV) Tests (%) in Canada by Region by Week of Report

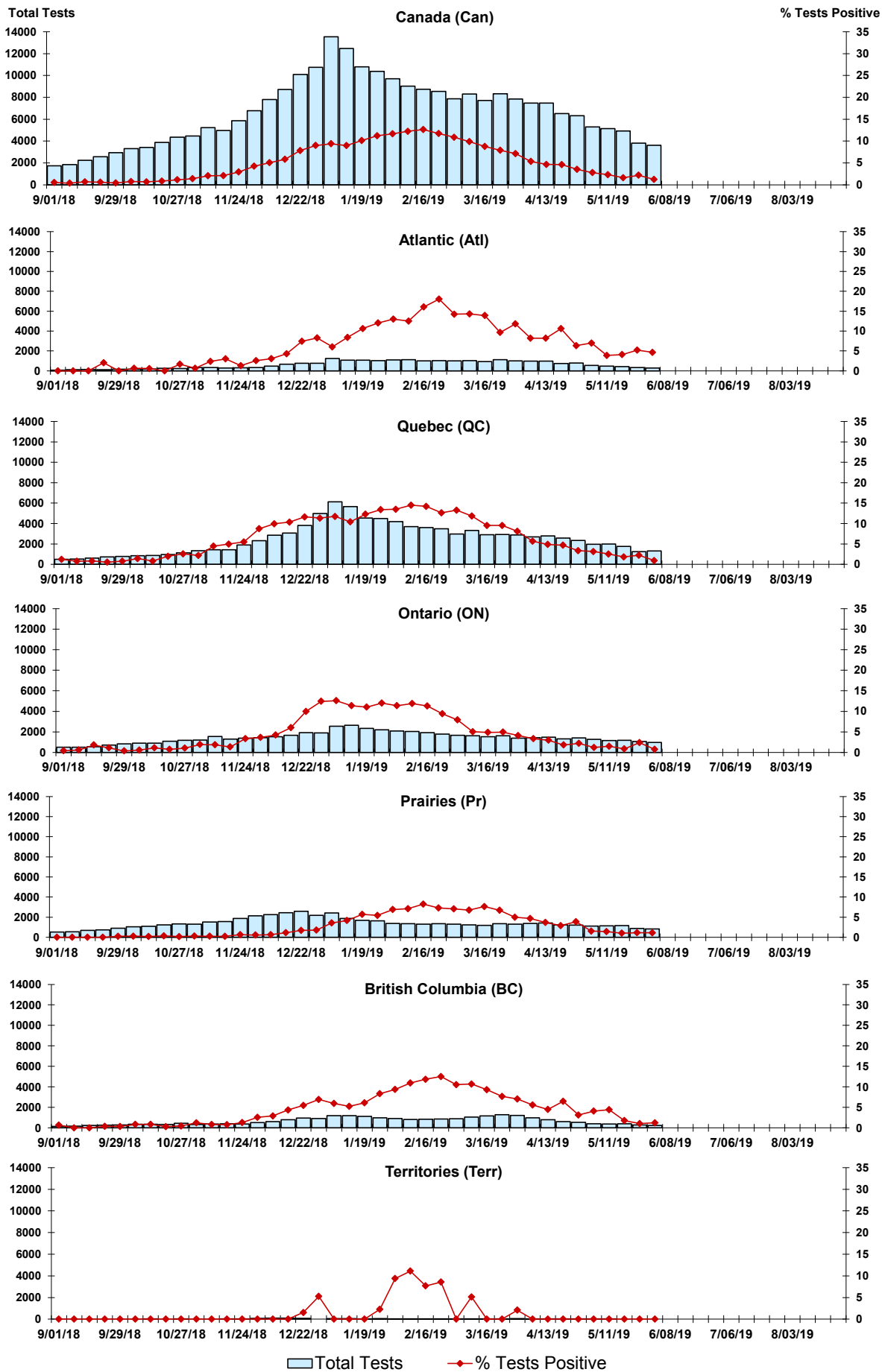


Figure 4: Positive Parainfluenza (PIV) Tests (%) in Canada by Region by Week of Report

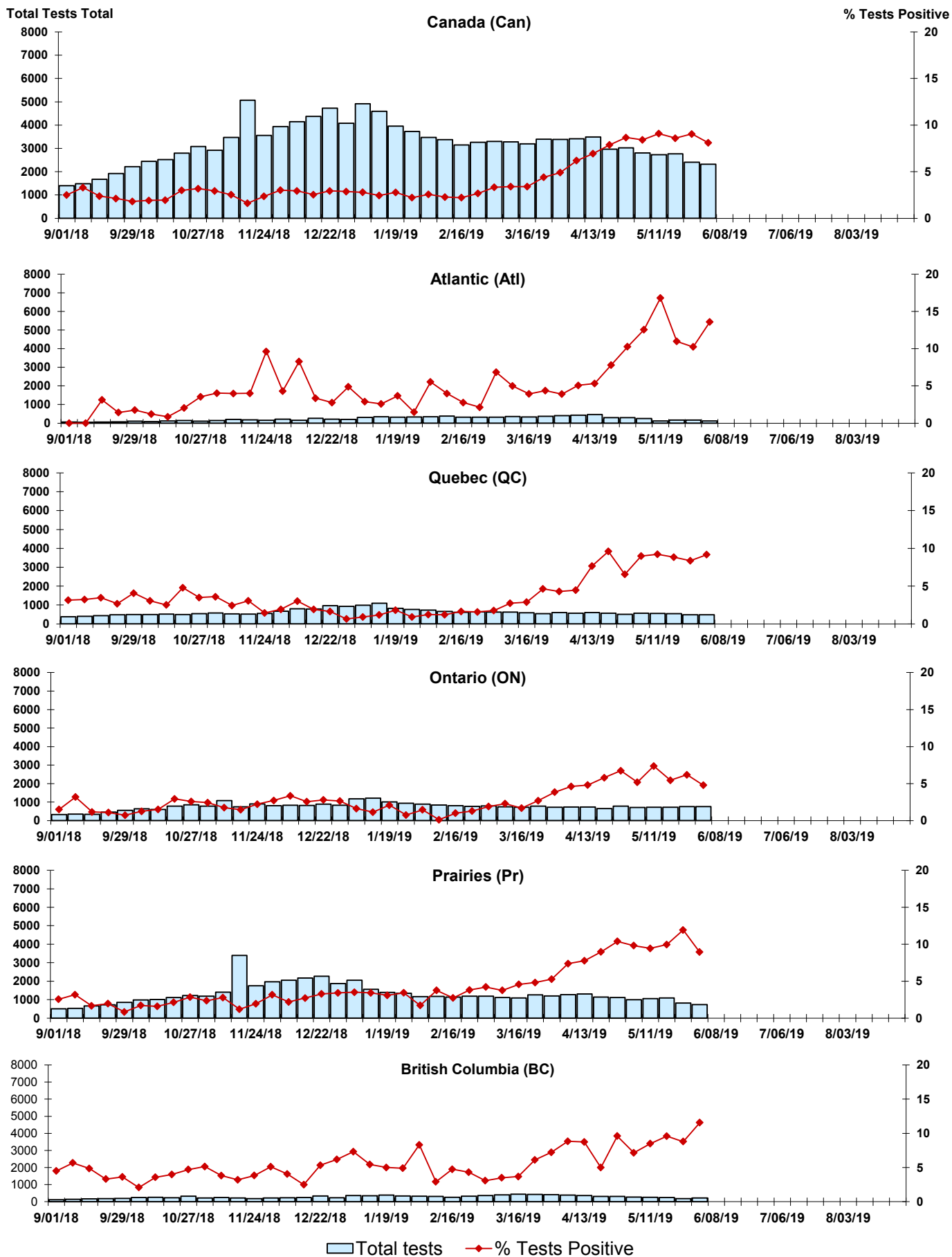


Figure 5: Positive Adenovirus (adeno) Tests (%) in Canada by Region by Week of Report

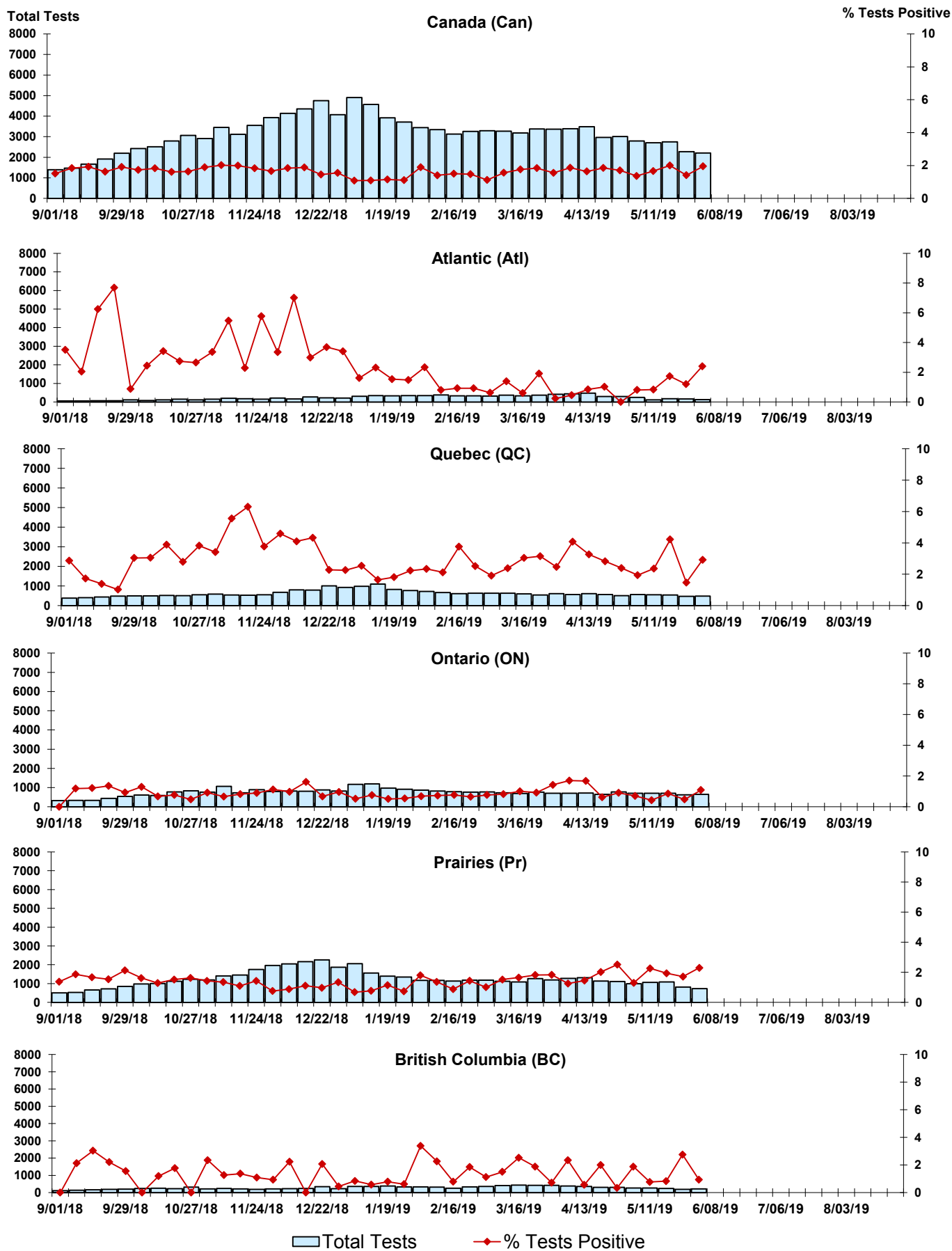
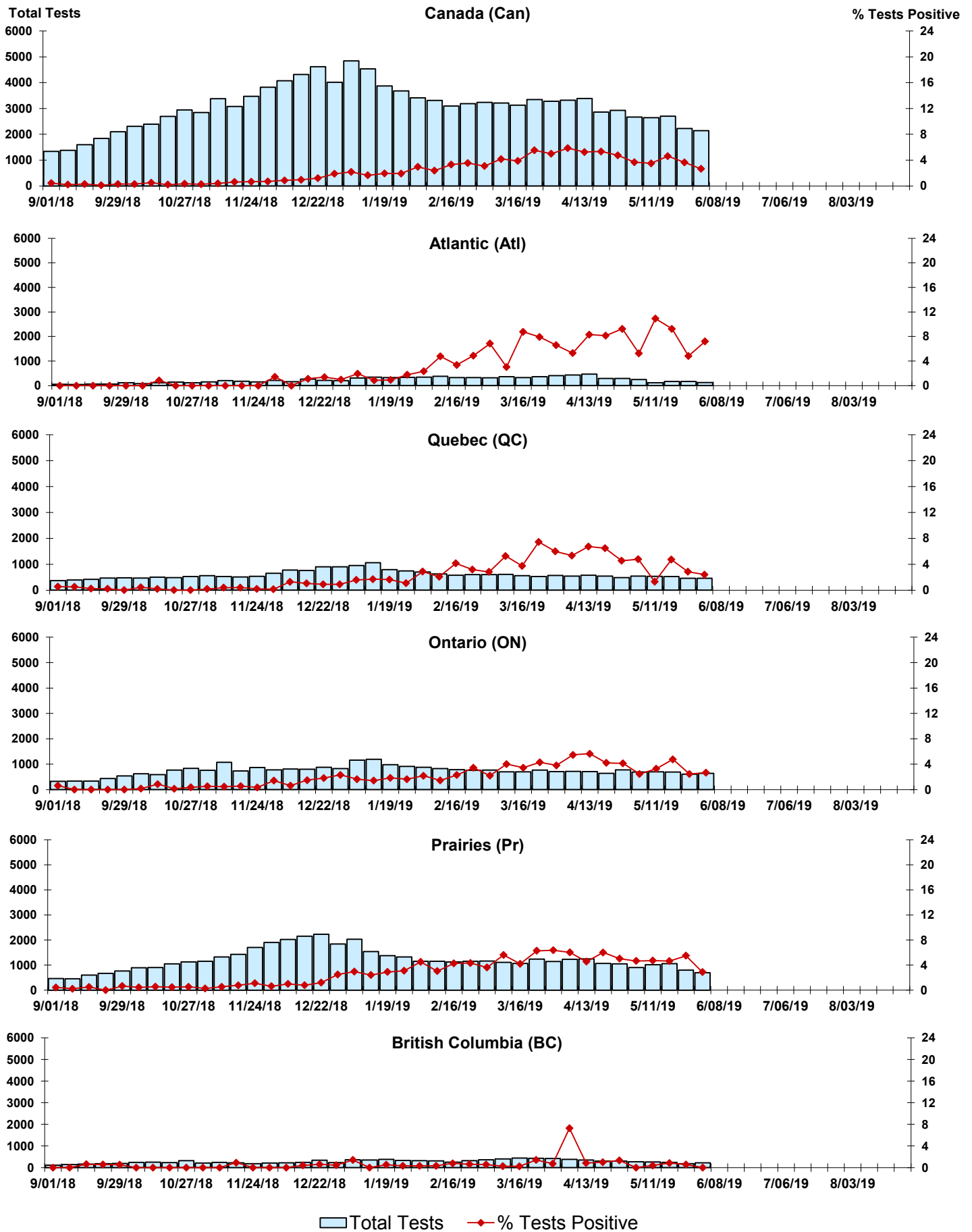


Figure 6: Positive human metapneumovirus (hMPV) Tests (%) in Canada by Region by Week of Report



Legend: Total Tests (light blue bar), % Tests Positive (red line with diamond)



Figure 7: Positive Enterovirus/Rhinovirus (entero/rhino) Tests (%) in Canada by Region by Week of Report

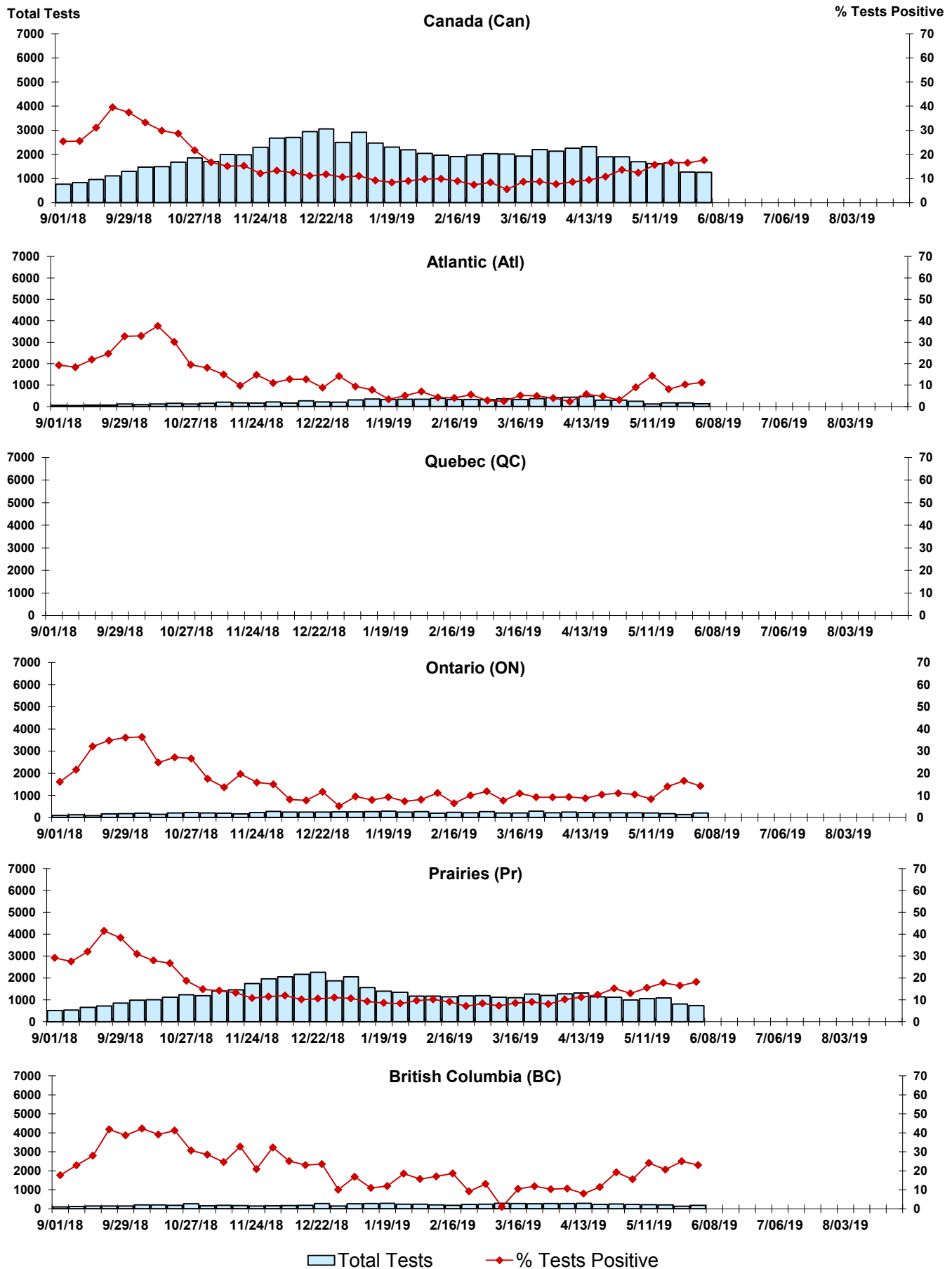
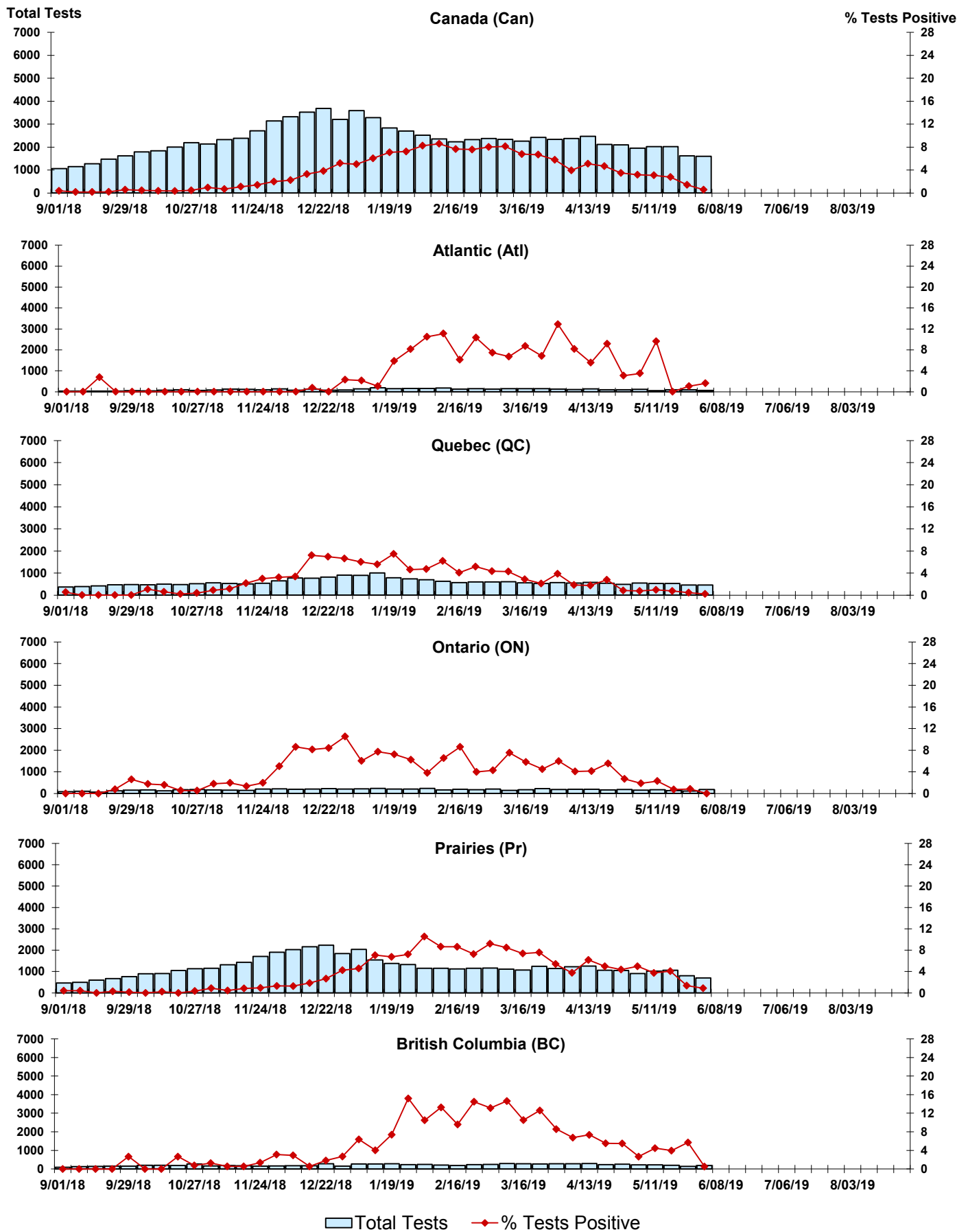


Figure 8: Positive Coronavirus (coron) Tests (%) in Canada by Region by Week of Report



## Abbreviations:

A(H1N1)pdm09: Influenza A(H1N1)pdm09

A(H3): Influenza A(H3N2)

A (UnS): Influenza A (Unsubtyped)

Adeno: Adenovirus

CHEO: Children's Hospital of Eastern Ontario

Coron: Coronavirus

Entero: Enterovirus

hMPV: human metapneumovirus

HSC: Health Sciences Centre

N.A.: Not Applicable

P.H.L.: Public Health Laboratory

P.H.O.L.: Public Health Ontario Laboratory

PIV: Parainfluenza

Rhino: Rhinovirus

RSV: Respiratory syncytial virus

UHN: University Health Network

## Notes:

Specimens from Yukon (YT), Northwest Territories (NT) and Nunavut (NU) are sent to reference laboratories in other provinces. Results reported for the Territories reflect the number of specimens that are identified as originating from YT, NT or NU.

Delays in the reporting of data may cause data to change retrospectively.

Due to reporting delays, the sum of weekly report totals do not add up to cumulative totals.