

Respiratory Virus Detections in Canada

Respiratory Virus Report, Week 23 - ending June 8, 2019

The Respiratory Virus Detection Surveillance System collects data from select laboratories across Canada on the number of tests performed and the number of tests positive for influenza and other respiratory viruses. Data are reported on a weekly basis year-round to the Centre for Immunization and Respiratory Infectious Diseases (CIRID), Public Health Agency of Canada. These data are also summarized in the weekly FluWatch report.

Table 1: Respiratory Virus Detections/Isolations for the week ending June 8, 2019 (Reporting Week 201923)

Reporting Laboratory	Flu Tested	A(H1N1)pdm09 Positive	A(H3) Positive	A(UnS) Positive	Total Flu A Positive	Total Flu B Positive	RSV Tested	RSV Positive	PIV Tested	PIV 1 Positive	PIV 2 Positive	PIV 3 Positive	PIV 4 Positive	Other PIV Positive	Adeno Tested	Adeno Positive	hMPV Tested	hMPV Positive	Entero/Rhino Tested	Entero/Rhino Positive	Coron Tested	Coron Positive
Newfoundland	0	0	0	0	0	0	0	0	0	0	0	0	0	0	0	0	0	0	0	0	N.A.	N.A.
Prince Edward Island	3	0	0	0	0	0	3	0	0	0	0	0	0	0	0	0	0	0	0	0	0	0
Nova Scotia	19	0	0	0	0	0	20	1	5	0	0	0	0	0	5	0	5	0	5	1	5	0
New Brunswick	220	1	2	6	9	7	220	5	69	0	0	2	1	0	69	3	69	0	69	17	69	0
Atlantic	242	1	2	6	9	7	243	6	74	0	0	2	1	0	74	3	74	0	74	18	74	0
Région Nord-Est	64	0	0	0	0	2	56	5	0	0	0	0	0	0	0	0	0	0	N.A.	N.A.	0	0
Québec-Chaudière-Appalaches	84	0	0	1	1	1	94	1	92	0	0	5	0	0	94	3	81	0	N.A.	N.A.	81	0
Centre-du-Québec	83	0	0	0	0	5	63	0	0	0	0	0	0	0	0	0	0	0	N.A.	N.A.	0	0
Montréal-Laval	595	0	0	8	8	12	599	6	405	4	0	28	1	0	405	10	395	6	N.A.	N.A.	395	1
Ouest du Québec	78	0	0	1	1	5	76	1	0	0	0	0	0	0	0	0	0	0	N.A.	N.A.	0	0
Montérégie	90	0	0	0	0	1	90	1	0	0	0	0	0	0	0	0	0	0	N.A.	N.A.	0	0
Province of Québec	994	0	0	10	10	26	978	14	497	4	0	33	1	0	499	13	476	6	N.A.	N.A.	476	1
Ottawa P.H.L.	4	0	0	0	0	0	4	0	2	0	0	0	0	0	2	0	2	0	0	0	0	0
CHEO - Ottawa	109	0	0	2	2	2	109	1	17	1	0	2	0	0	17	0	17	0	17	6	17	0
Kingston P.H.L.	13	0	0	0	0	2	13	0	9	0	0	0	0	0	9	0	7	0	2	0	0	0
UHN / Mount Sinai Hospital	232	0	0	0	0	3	232	0	18	0	0	3	0	0	0	0	18	0	N.A.	N.A.	N.A.	N.A.
P.H.O.L. - Toronto	246	2	2	2	6	3	246	1	226	1	0	12	0	0	226	2	218	8	8	0	0	0
Sick Kids Hospital - Toronto	51	1	0	0	1	0	51	2	51	2	0	2	0	0	51	0	51	0	51	11	51	0
Sunnybrook & Women's College HSC	53	0	0	0	0	0	53	0	53	0	0	2	0	0	53	0	53	2	53	12	53	2
Sault Ste. Marie P.H.L.	1	0	0	0	0	0	1	0	1	0	0	0	0	0	1	0	1	0	0	0	0	0
Timmins P.H.L.	5	0	0	0	0	0	4	0	4	0	0	0	0	0	4	0	3	0	1	0	0	0
St. Joseph's - London	25	0	0	0	0	0	25	0	22	0	0	3	0	0	22	1	22	0	18	2	18	0
London P.H.L.	39	0	0	0	0	0	39	0	36	0	0	2	0	0	36	0	34	0	2	0	0	0
Orillia P.H.L.	19	0	2	0	2	0	19	0	11	0	0	0	0	0	11	0	11	1	0	0	0	0
Thunder Bay P.H.L.	3	0	0	0	0	0	3	0	3	0	0	0	0	0	3	0	3	0	0	0	0	0
Sudbury P.H.L.	13	0	0	0	0	0	13	0	11	1	0	0	0	0	11	0	11	0	0	0	0	0
Hamilton P.H.L.	37	1	0	0	1	0	37	0	36	0	0	2	0	0	36	1	36	0	0	0	0	0
Peterborough P.H.L.	11	0	0	0	0	0	11	0	5	0	0	0	0	0	5	0	5	0	0	0	0	0
Province of Ontario	861	4	4	4	12	10	860	4	505	5	0	28	0	0	487	4	492	11	152	31	139	2
Manitoba	167	0	5	2	7	4	154	6	86	0	0	3	0	0	86	0	59	1	86	16	59	1
Regina	73	0	0	4	4	1	73	2	73	0	0	2	0	0	73	4	73	2	73	23	73	6
Saskatoon	99	0	0	3	3	0	99	1	99	0	0	3	0	0	99	1	99	9	99	16	99	0
Province of Saskatchewan	172	0	0	7	7	1	172	3	172	0	0	5	0	0	172	5	172	11	172	39	172	6
Province of Alberta	514	1	20	4	25	9	458	0	458	7	3	41	0	0	458	7	458	11	458	75	458	7
Prairies	853	1	25	13	39	14	784	9	716	7	3	49	0	0	716	12	689	23	716	130	689	14
British Columbia	222	1	8	5	14	2	222	1	185	1	1	11	0	0	185	0	185	0	143	33	143	3
Yukon	3	0	0	1	1	0	3	0	N.A.	N.A.	N.A.	N.A.	N.A.	N.A.	N.A.	N.A.	N.A.	N.A.	N.A.	N.A.	N.A.	N.A.
Northwest Territories	5	0	0	0	0	0	5	0	5	0	0	2	0	0	5	0	5	0	5	2	5	0
Nunavut	0	0	0	0	0	0	0	0	0	0	0	0	0	0	0	0	0	0	0	0	0	0
Territories	8	0	0	1	1	0	8	0	5	0	0	2	0	0	5	0	5	0	5	2	5	0
CANADA	3180	7	39	39	85	59	3095	34	1982	17	4	125	2	0	1966	32	1921	40	1090	214	1526	20

Specimens from Yukon (YT), Northwest Territories (NT) and Nunavut (NU) are sent to reference laboratories in other provinces and reported results reflect specimens identified as originating from YT, NT or NU.

Results from British Columbia comprise of specimens from the following sites: BC Children's and Women's Hospital, Powell River Hospital, St. Paul's Hospital, Vancouver General Hospital, Victoria General Hospital, Interior Health Authority sites and Northern Health Authority sites.

Delays in the reporting of data may cause data to change retrospectively.

Table 2: Respiratory Virus Detections/Isolations for the period August 26, 2018 - June 8, 2019 (Reporting Weeks 201835-201923)

Reporting Laboratory	Flu Tested	A(H1N1)pdm09 Positive	A(H3) Positive	A(UnS) Positive	Total Flu A Positive	Total Flu B Positive	RSV Tested	RSV Positive	PIV Tested	PIV 1 Positive	PIV 2 Positive	PIV 3 Positive	PIV 4 Positive	Other PIV Positive	Adeno Tested	Adeno Positive	hMPV Tested	hMPV Positive	Entero/Rhino Tested	Entero/Rhino Positive	Coron Tested	Coron Positive
Newfoundland	5101	1	0	1032	1033	4	5101	484	5101	10	58	175	0	0	5101	42	5101	214	5101	330	N.A.	N.A.
Prince Edward Island	1258	221	56	1	278	2	1256	140	86	1	0	2	3	0	81	5	81	3	81	22	81	3
Nova Scotia	4064	0	0	786	786	21	4075	406	539	0	4	30	3	0	539	1	539	8	539	67	539	11
New Brunswick	14462	246	39	2595	2880	355	14461	1230	3700	0	18	127	43	0	3700	128	3700	148	3700	413	3700	176
Atlantic	24885	468	95	4414	4977	382	24893	2260	9426	11	80	334	49	0	9421	176	9421	373	9421	832	4320	190
Région Nord-Est	9435	0	0	1584	1584	63	7424	702	0	0	0	0	0	0	0	0	0	0	N.A.	N.A.	0	0
Québec-Chaudière-Appalaches	16272	0	0	3139	3139	79	16552	1582	3249	9	32	88	9	0	3354	112	2734	48	N.A.	N.A.	2560	31
Centre-du-Québec	18722	0	0	3646	3646	218	15064	1588	0	0	0	0	0	0	36	0	0	0	N.A.	N.A.	0	0
Montréal-Laval	41882	0	0	4658	4658	337	40639	2997	21958	101	153	451	40	0	21958	622	21536	488	N.A.	N.A.	21485	725
Ouest du Québec	13058	0	0	2698	2698	176	11963	1405	0	0	0	0	0	0	0	0	0	0	N.A.	N.A.	0	0
Montérégie	9167	0	0	1392	1393	51	8755	679	0	0	0	0	0	0	0	0	0	0	N.A.	N.A.	0	0
Province of Québec	108536	0	0	17117	17118	924	100397	8953	25207	110	185	539	49	0	25348	734	24270	536	N.A.	N.A.	24045	756
Ottawa P.H.L.	966	91	70	22	183	4	961	88	558	0	3	8	0	0	558	1	529	9	35	0	0	0
CHEO - Ottawa	8324	0	0	860	860	42	8323	930	912	5	10	26	6	0	913	28	912	18	905	219	884	39
Kingston P.H.L.	994	67	71	12	150	16	994	63	708	0	4	18	0	0	708	1	671	7	103	0	0	0
UHN / Mount Sinai Hospital	12191	6	15	748	769	55	12191	483	665	1	9	14	3	0	0	0	613	8	N.A.	N.A.	N.A.	N.A.
P.H.O.L. - Toronto	14432	891	709	99	1699	80	13995	539	11489	23	61	144	0	0	11490	59	11150	183	544	0	0	0
Sick Kids Hospital - Toronto	2799	115	46	122	283	39	2383	224	2383	24	37	64	26	0	2383	84	2383	102	2383	567	2383	135
Sunnybrook & Women's College HSC	2739	73	100	11	184	6	2739	62	2739	12	5	31	1	0	2739	1	2739	87	2739	216	2739	100
Sault Ste. Marie P.H.L.	439	47	40	3	90	0	371	18	341	0	3	2	0	0	341	0	335	5	10	0	0	0
Timmins P.H.L.	400	60	10	1	71	0	328	12	326	0	7	6	0	0	326	0	318	1	21	0	0	0
St. Joseph's - London	4690	3	0	530	533	6	4562	361	1606	5	6	42	15	0	1606	33	1606	53	1156	176	903	21
London P.H.L.	4177	320	205	60	585	18	4139	333	2938	6	23	49	0	0	2938	20	2822	42	212	0	0	0
Orillia P.H.L.	1275	67	77	23	167	2	1275	128	918	2	2	24	0	0	918	1	905	18	37	0	0	0
Thunder Bay P.H.L.	452	32	45	8	85	0	358	18	345	1	1	15	0	0	344	4	329	9	26	0	0	0
Sudbury P.H.L.	924	48	22	0	70	0	862	33	833	5	4	9	0	0	833	3	785	13	77	0	0	0
Hamilton P.H.L.	4041	236	224	33	493	14	3942	136	3192	12	15	71	0	0	3192	25	3138	52	163	0	0	0
Peterborough P.H.L.	1158	44	78	22	144	3	1154	49	909	3	4	7	0	0	909	0	897	12	15	0	0	0
Province of Ontario	60001	2100	1712	2554	6366	285	58577	3477	30862	99	194	530	51	0	30198	260	30132	619	8656	1190	7146	305
Manitoba	10878	331	128	728	1187	70	10329	623	4741	6	19	142	12	0	4741	46	2963	85	4741	564	2997	130
Regina	8559	1433	150	163	1746	81	8559	550	10492	4	64	224	35	0	8559	139	8559	176	8559	1515	8559	302
Saskatoon	6556	0	0	885	885	47	6556	442	6556	3	7	47	14	48	6556	58	6556	147	6556	465	6556	100
Province of Saskatchewan	15115	1433	150	1048	2631	128	15115	992	17048	7	71	271	49	48	15115	197	15115	323	15115	1980	15115	402
Province of Alberta	38030	3641	1318	2212	7171	345	31025	0	31025	63	238	993	247	0	31025	456	31025	926	31025	4560	31025	1363
Prairies	64023	5405	1596	3988	10989	543	56469	1615	52814	76	328	1406	308	48	50881	699	49103	1334	50881	7104	49137	1895
British Columbia	26316	3158	1573	1598	6329	237	26279	1571	11357	18	72	440	104	0	11357	155	11357	79	8673	1719	8673	492
Yukon	381	65	16	37	118	0	381	18	N.A.	N.A.	N.A.	N.A.	N.A.	N.A.	N.A.	N.A.	N.A.	N.A.	N.A.	N.A.	N.A.	N.A.
Northwest Territories	789	175	6	0	181	2	784	0	784	5	0	31	4	0	784	26	784	9	784	134	784	47
Nunavut	117	20	0	0	20	0	117	0	117	4	0	4	0	0	117	18	116	0	117	31	116	9
Territories	1287	260	22	37	319	2	1282	18	901	9	0	35	4	0	901	44	900	9	901	165	900	56
CANADA	285048	11391	4998	29708	46098	2373	267897	17894	130567	323	859	3284	565	48	128106	2068	125183	2950	78532	11010	94221	3694

Specimens from YT, NT and NU are sent to reference laboratories in other provinces and reported results reflect specimens identified as originating from YT, NT or NU.

Results from British Columbia comprise of specimens from the following sites: BC Children's and Women's Hospital, Powell River Hospital, St. Paul's Hospital, Vancouver General Hospital, Victoria General Hospital, Interior Health Authority sites and Northern Health Authority sites.

Delays in the reporting of data may cause data to change retrospectively.

Due to reporting delays, the sum of weekly report totals do not add up to cumulative totals.

Figure 1: Number positive laboratory tests for other respiratory viruses by report week, Canada, 2018-19

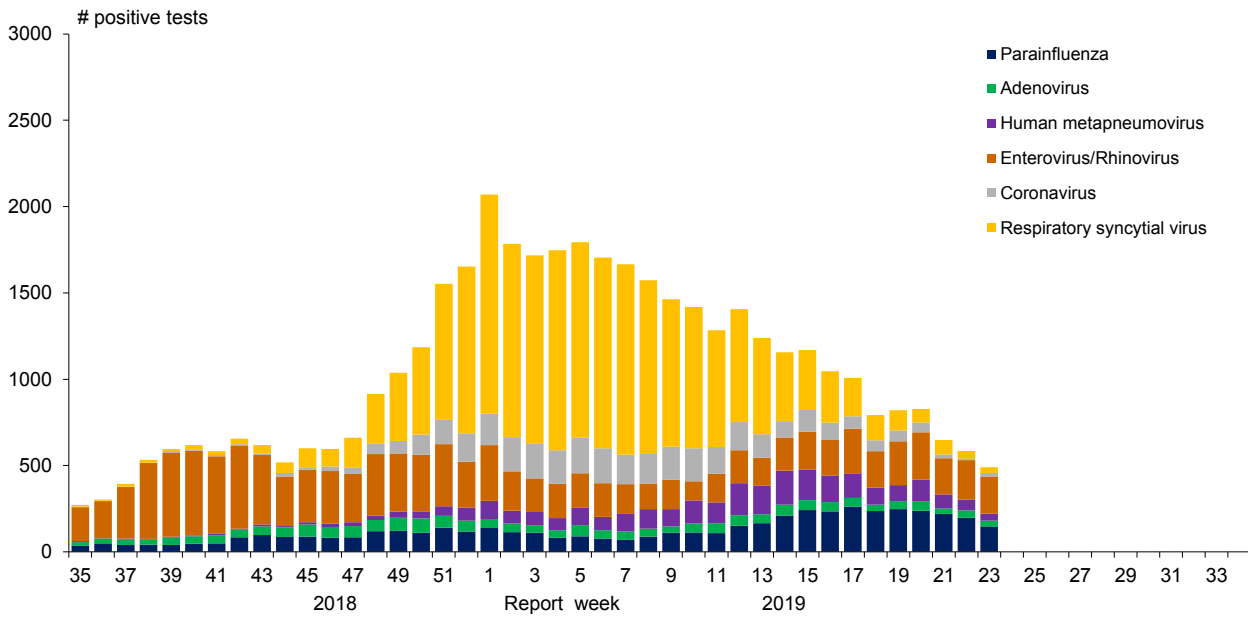


Figure 2: Positive Influenza Tests (%) in Canada by Region by Week of Report

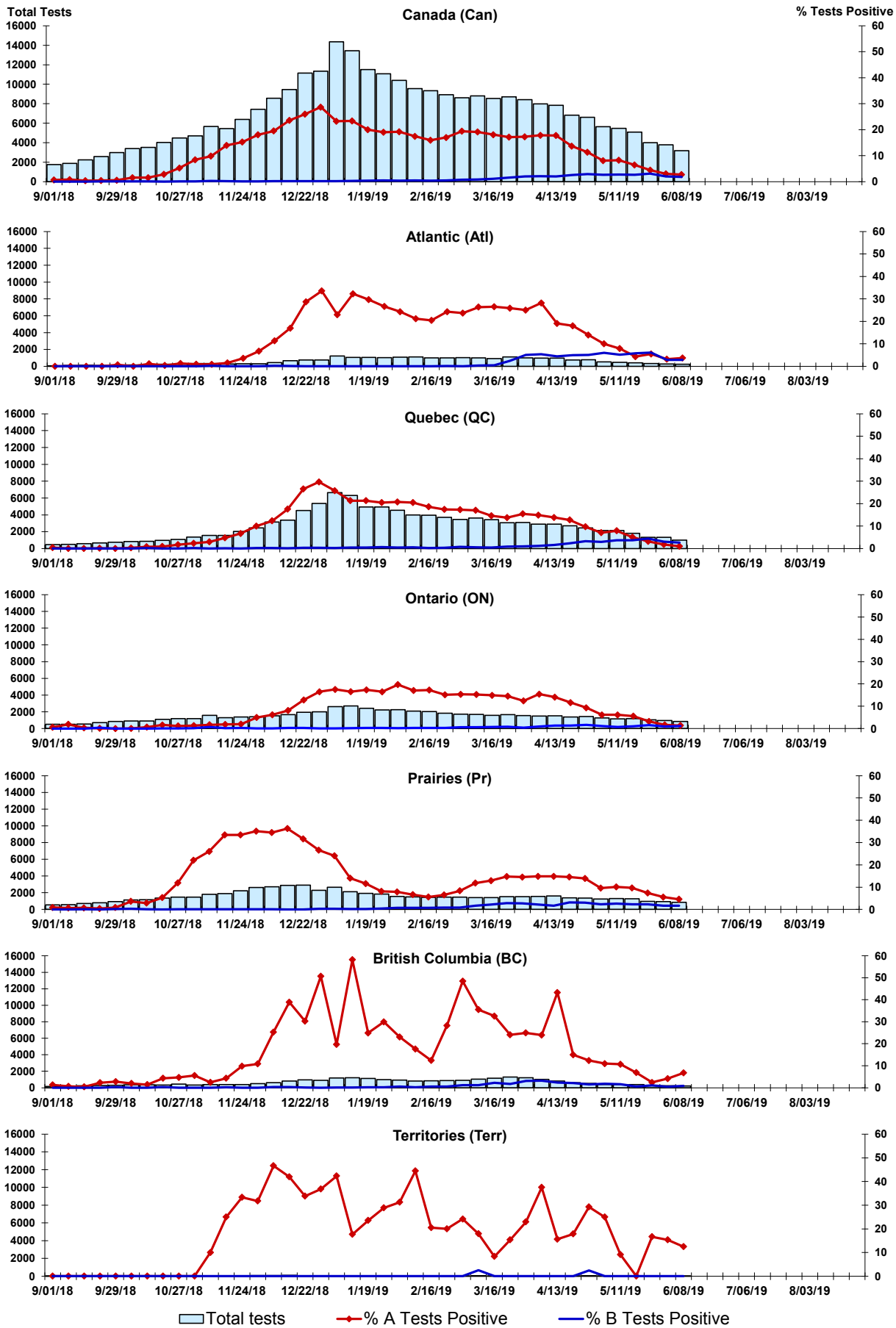


Figure 3: Positive Respiratory syncytial virus (RSV) Tests (%) in Canada by Region by Week of Report

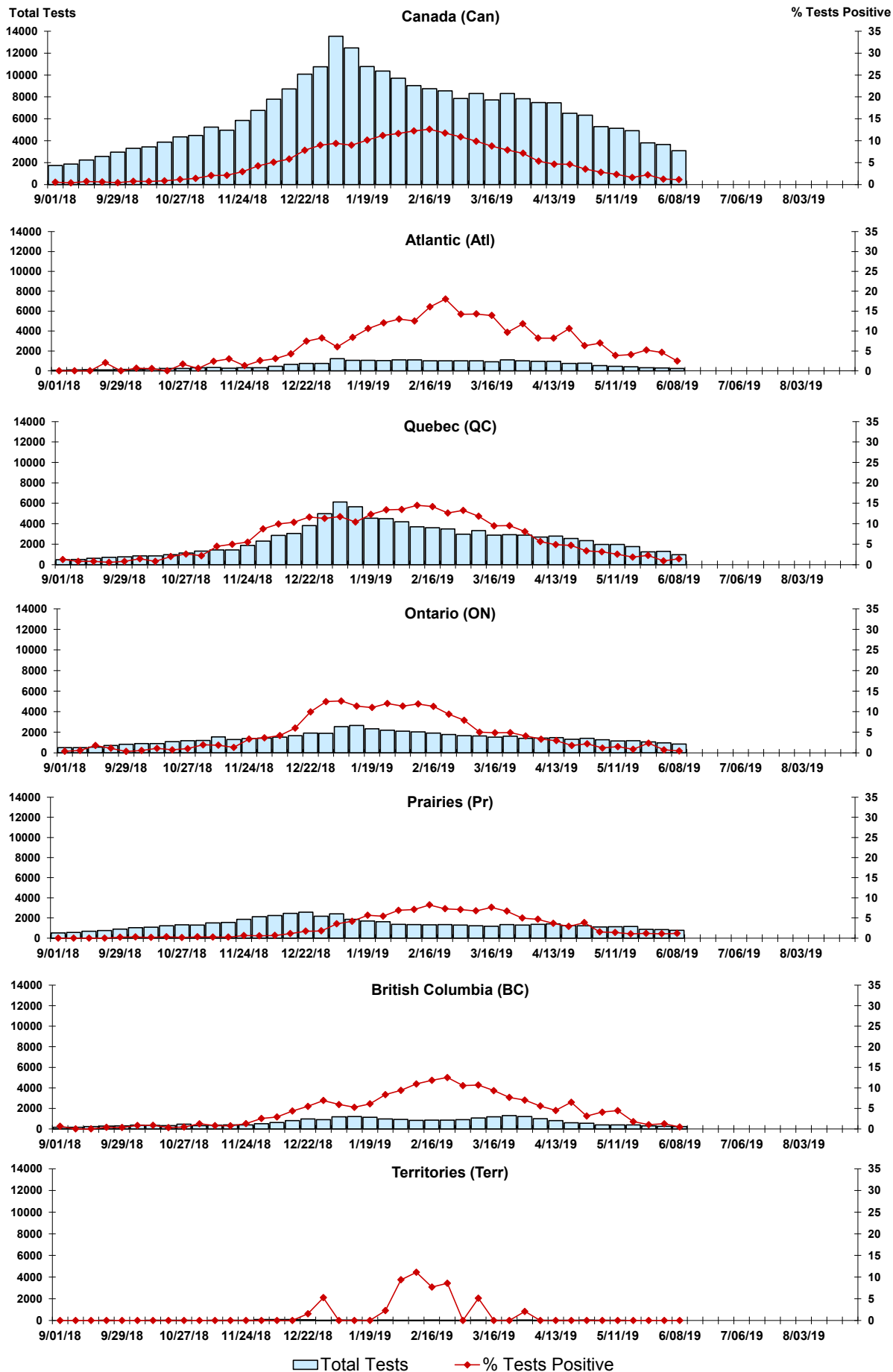


Figure 4: Positive Parainfluenza (PIV) Tests (%) in Canada by Region by Week of Report

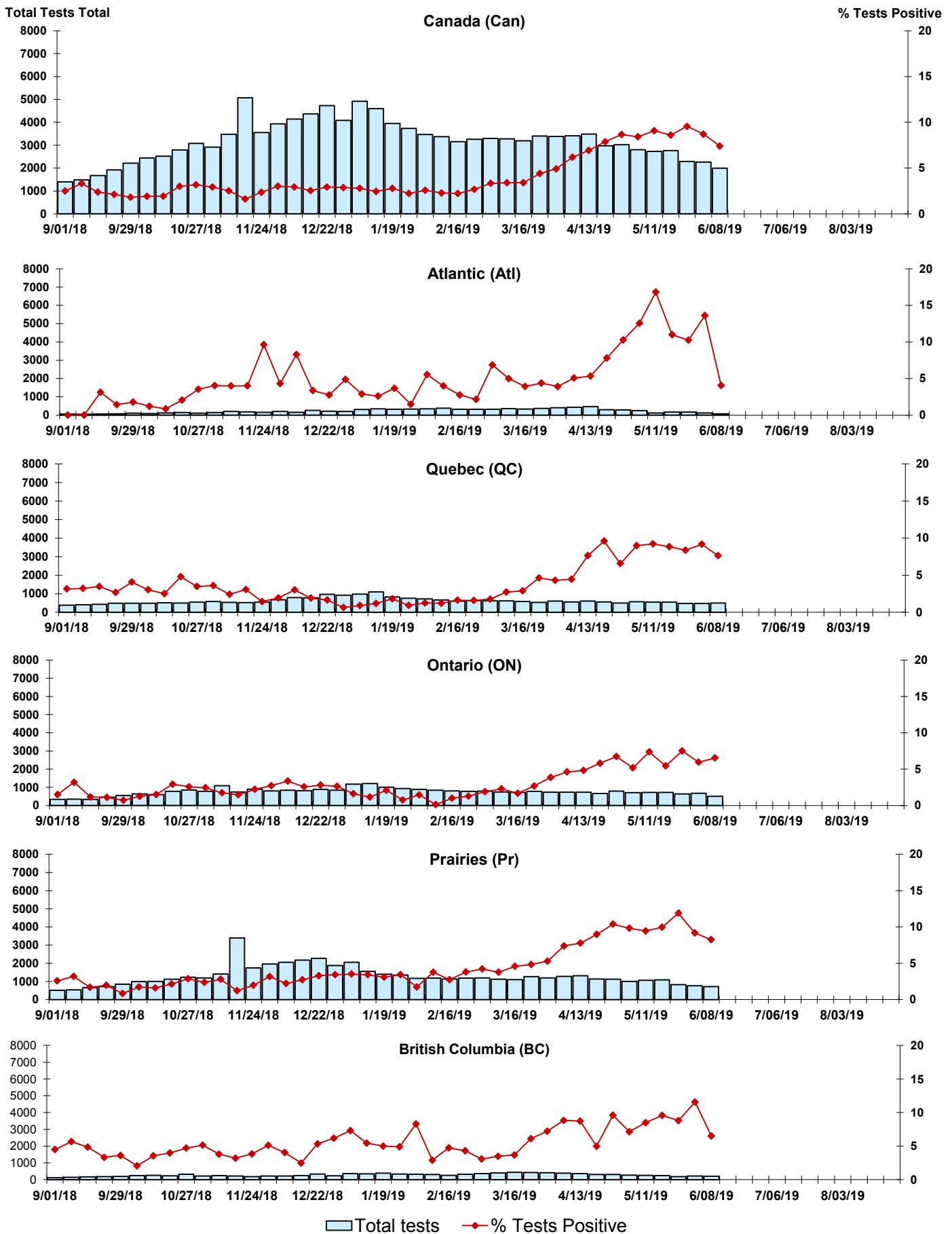


Figure 5: Positive Adenovirus (adeno) Tests (%) in Canada by Region by Week of Report

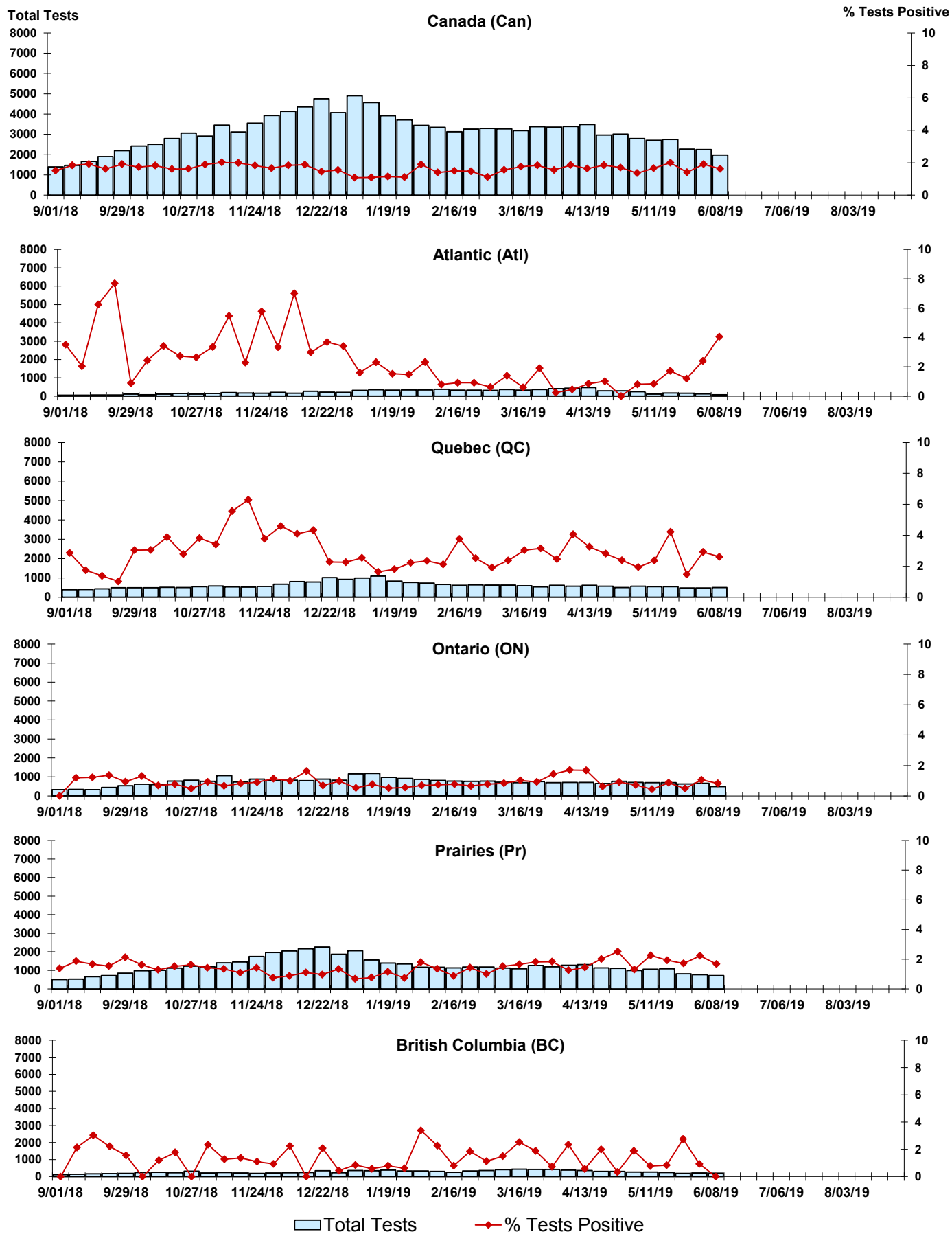


Figure 6: Positive human metapneumovirus (hMPV) Tests (%) in Canada by Region by Week of Report

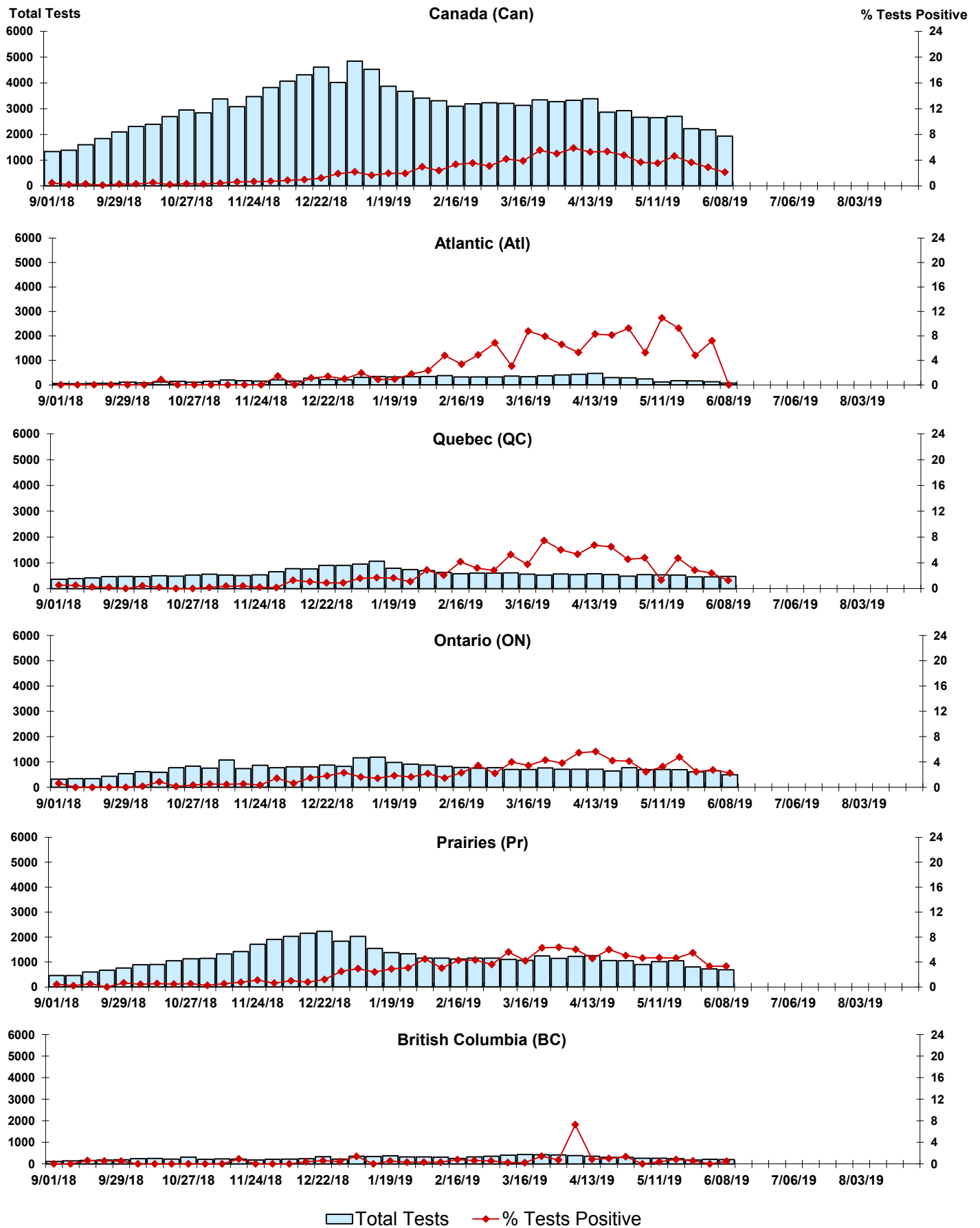


Figure 7: Positive Enterovirus/Rhinovirus (entero/rhino) Tests (%) in Canada by Region by Week of Report

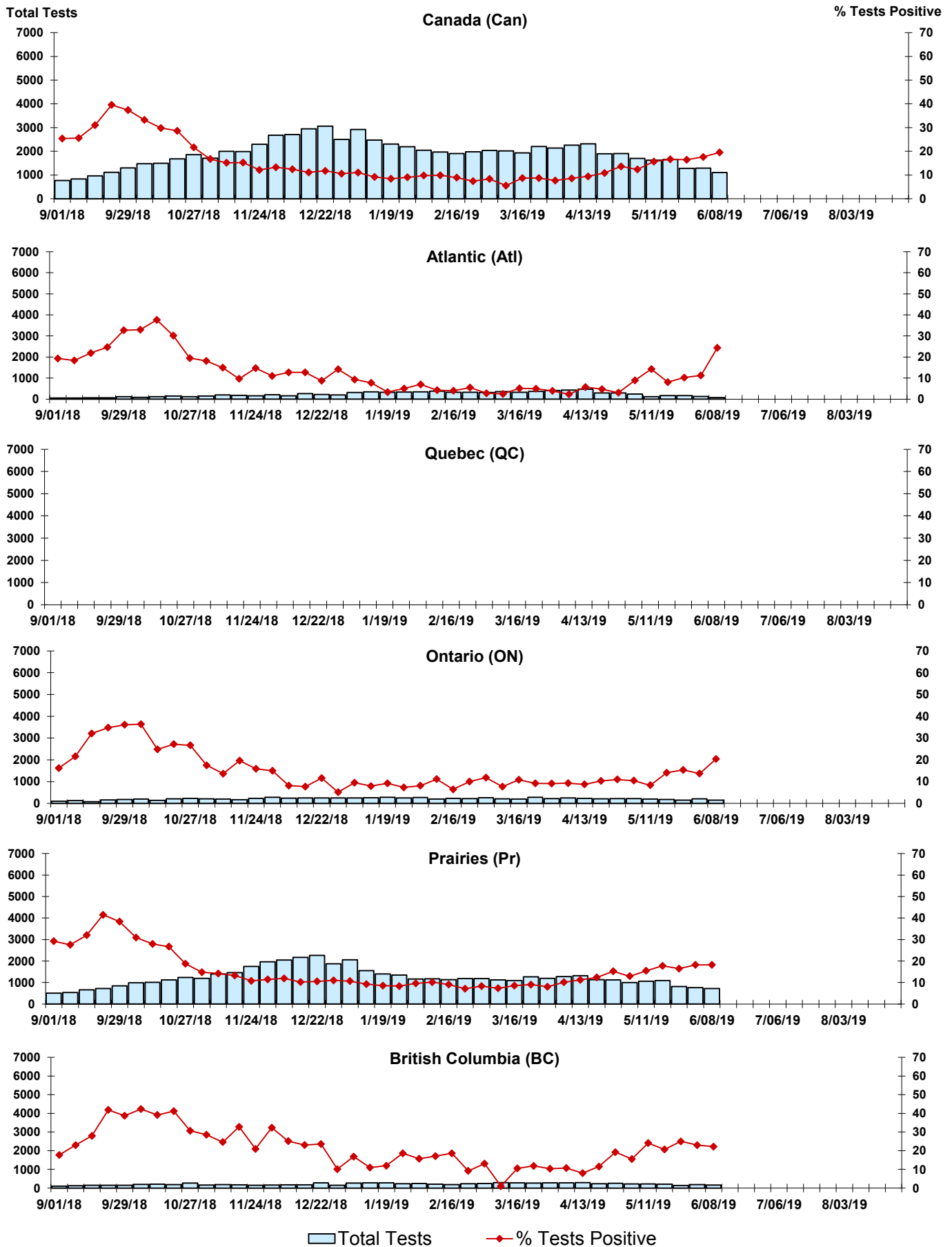
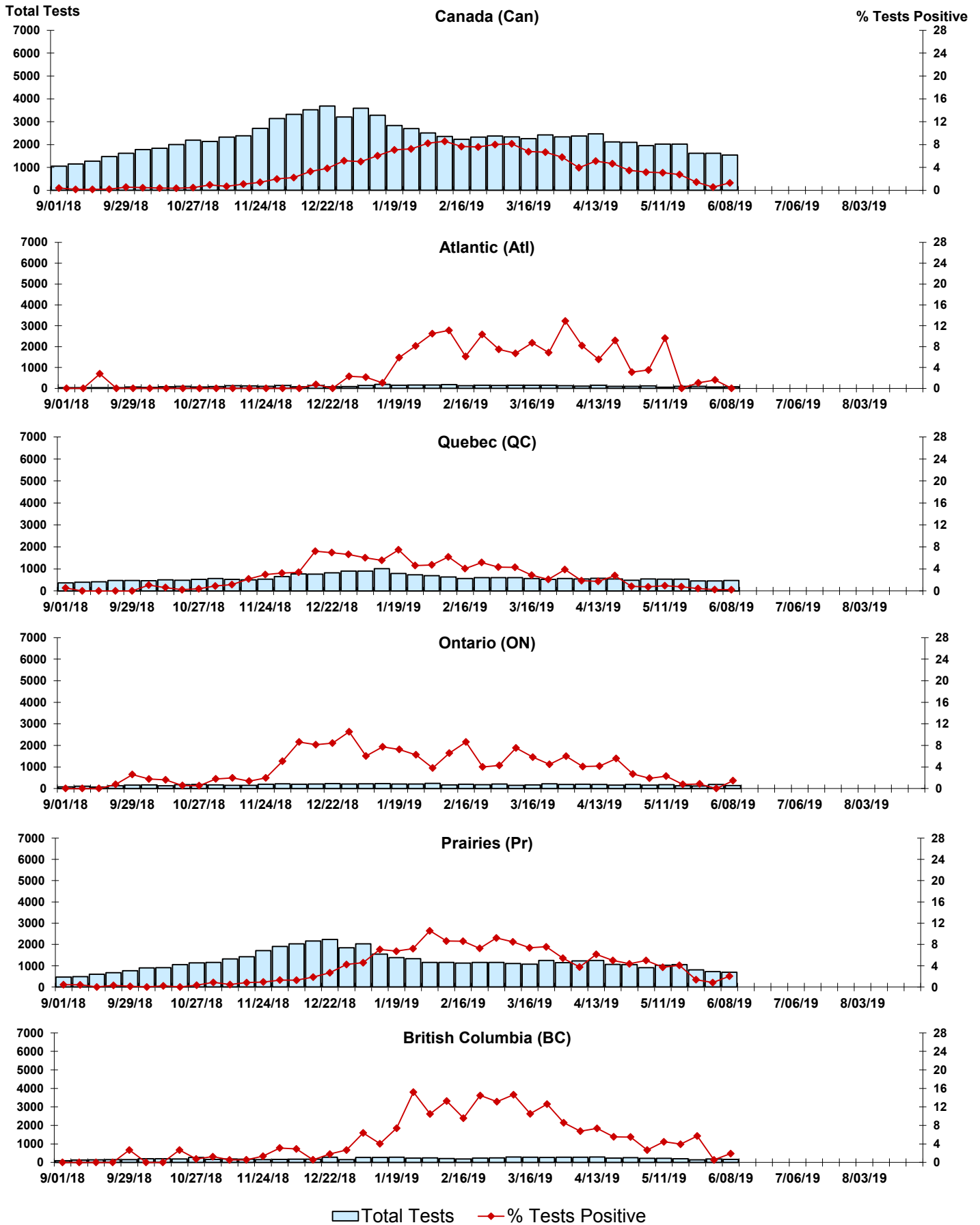


Figure 8: Positive Coronavirus (coron) Tests (%) in Canada by Region by Week of Report



Abbreviations:

A(H1N1)pdm09: Influenza A(H1N1)pdm09

A(H3): Influenza A(H3N2)

A (UnS): Influenza A (Unsubtyped)

Adeno: Adenovirus

CHEO: Children's Hospital of Eastern Ontario

Coron: Coronavirus

Entero: Enterovirus

hMPV: human metapneumovirus

HSC: Health Sciences Centre

N.A.: Not Applicable

P.H.L.: Public Health Laboratory

P.H.O.L.: Public Health Ontario Laboratory

PIV: Parainfluenza

Rhino: Rhinovirus

RSV: Respiratory syncytial virus

UHN: University Health Network

Notes:

Specimens from Yukon (YT), Northwest Territories (NT) and Nunavut (NU) are sent to reference laboratories in other provinces. Results reported for the Territories reflect the number of specimens that are identified as originating from YT, NT or NU.

Delays in the reporting of data may cause data to change retrospectively.

Due to reporting delays, the sum of weekly report totals do not add up to cumulative totals.