

Respiratory Virus Detections in Canada

Respiratory Virus Report, Week 26 - ending June 29, 2019

The Respiratory Virus Detection Surveillance System collects data from select laboratories across Canada on the number of tests performed and the number of tests positive for influenza and other respiratory viruses. Data are reported on a weekly basis year-round to the Centre for Immunization and Respiratory Infectious Diseases (CIRID), Public Health Agency of Canada. These data are also summarized in the weekly FluWatch report.

Table 1: Respiratory Virus Detections/Isolations for the week ending June 29, 2019 (Reporting Week 201926)

Reporting Laboratory	Flu Tested	A(H1N1)pdm09 Positive	A(H3) Positive	A(UnS) Positive	Total Flu A Positive	Total Flu B Positive	RSV Tested	RSV Positive	PIV Tested	PIV 1 Positive	PIV 2 Positive	PIV 3 Positive	PIV 4 Positive	Other PIV Positive	Adeno Tested	Adeno Positive	hMPV Tested	hMPV Positive	Entero/Rhino Tested	Entero/Rhino Positive	Coron Tested	Coron Positive
Newfoundland	56	0	0	0	0	6	56	0	56	0	0	2	0	0	56	1	56	1	56	11	N.A.	N.A.
Prince Edward Island	1	0	0	0	0	0	1	0	1	0	0	0	0	0	1	0	1	0	1	0	1	0
Nova Scotia	21	0	0	0	0	0	21	0	8	0	0	1	0	0	8	0	8	1	8	1	8	0
New Brunswick	89	0	0	0	0	1	89	1	38	0	0	0	0	0	38	1	38	0	38	4	38	1
Atlantic	167	0	0	0	0	7	167	1	103	0	0	3	0	0	103	2	103	2	103	16	47	1
Région Nord-Est	39	0	0	0	0	1	30	0	0	0	0	0	0	0	0	0	0	0	N.A.	N.A.	0	0
Québec-Chaudière-Appalaches	62	0	0	2	2	1	64	0	57	1	0	0	1	0	59	5	0	0	N.A.	N.A.	51	0
Centre-du-Québec	30	0	0	0	0	1	27	0	0	0	0	0	0	0	0	0	0	0	N.A.	N.A.	0	0
Montréal-Laval	420	0	0	4	4	3	419	3	319	4	0	13	0	0	319	7	0	0	N.A.	N.A.	308	0
Ouest du Québec	27	0	0	0	0	0	25	0	0	0	0	0	0	0	0	0	0	0	N.A.	N.A.	0	0
Montérégie	41	0	0	1	1	0	41	0	0	0	0	0	0	0	0	0	0	0	N.A.	N.A.	0	0
Province of Québec	619	0	0	7	7	6	606	3	376	5	0	13	1	0	378	12	0	0	N.A.	N.A.	359	0
Ottawa P.H.L.	3	0	0	0	0	0	3	0	3	0	0	0	0	0	3	0	1	0	2	0	0	0
CHEO - Ottawa	75	0	0	0	0	3	75	1	15	1	2	0	0	0	15	0	15	0	15	3	14	1
Kingston P.H.L.	8	0	0	0	0	0	8	0	8	0	0	0	0	0	8	0	6	0	3	0	0	0
UHN / Mount Sinai Hospital	170	0	0	1	1	2	170	0	8	0	0	0	0	0	0	0	8	0	N.A.	N.A.	N.A.	N.A.
P.H.O.L. - Toronto	261	0	3	1	4	0	261	1	257	3	0	7	0	0	257	3	248	1	9	0	0	0
Sick Kids Hospital - Toronto	43	0	0	0	0	0	43	0	43	1	0	4	0	0	43	1	43	3	43	13	43	0
Sunnybrook & Women's College HSC	7	0	0	0	0	0	7	0	7	0	0	1	0	0	7	0	7	0	7	2	7	0
Sault Ste. Marie P.H.L.	1	0	0	0	0	0	1	0	1	0	0	0	0	0	1	0	1	0	0	0	0	0
Timmins P.H.L.	4	0	0	0	0	0	4	0	4	0	0	0	0	0	4	0	4	0	0	0	0	0
St. Joseph's - London	0	0	0	0	0	0	0	0	0	0	0	0	0	0	0	0	0	0	0	0	0	0
London P.H.L.	24	0	0	0	0	0	24	0	24	0	0	1	0	0	24	0	23	0	1	0	0	0
Orillia P.H.L.	11	0	0	0	0	0	11	0	8	0	0	0	0	0	8	0	8	0	0	0	0	0
Thunder Bay P.H.L.	3	0	0	0	0	0	3	0	3	0	0	0	0	0	3	0	2	0	1	0	0	0
Sudbury P.H.L.	10	0	0	0	0	0	10	0	10	0	0	0	0	0	10	0	8	0	2	0	0	0
Hamilton P.H.L.	45	0	0	0	0	0	45	0	45	1	0	1	0	0	45	0	41	0	4	0	0	0
Peterborough P.H.L.	22	0	0	0	0	0	22	0	21	0	0	1	0	0	21	0	19	0	2	0	0	0
Province of Ontario	687	0	3	2	5	5	687	2	457	6	2	15	0	0	449	4	434	4	89	18	64	1
Manitoba	0	0	0	0	0	0	0	0	0	0	0	0	0	0	0	0	0	0	0	0	0	0
Regina	108	0	0	7	7	2	108	2	53	0	0	5	2	0	53	2	53	0	53	18	53	1
Saskatoon	70	0	0	1	1	1	70	1	70	0	0	1	0	0	70	1	70	2	70	24	70	0
Province of Saskatchewan	178	0	0	8	8	3	178	3	123	0	0	6	2	0	123	3	123	2	123	42	123	1
Province of Alberta	472	0	7	1	8	2	435	0	435	3	0	10	1	0	435	5	435	8	435	108	435	4
Prairies	650	0	7	9	16	5	613	3	558	3	0	16	3	0	558	8	558	10	558	150	558	5
British Columbia	287	0	16	3	19	1	287	4	234	0	1	18	0	0	234	3	234	0	186	54	186	1
Yukon	7	0	2	0	2	0	7	0	N.A.	N.A.	N.A.	N.A.	N.A.	N.A.	N.A.	N.A.	N.A.	N.A.	N.A.	N.A.	N.A.	N.A.
Northwest Territories	4	0	0	0	0	1	4	0	4	0	0	0	0	0	4	0	4	0	4	1	4	0
Nunavut	1	0	0	0	0	0	1	0	1	0	0	0	0	0	1	0	1	0	1	1	1	0
Territories	12	0	2	0	2	1	12	0	5	0	0	0	0	0	5	0	5	0	5	2	5	0
CANADA	2422	0	28	21	49	25	2372	13	1733	14	3	65	4	0	1727	29	1334	16	941	240	1219	8

Specimens from Yukon (YT), Northwest Territories (NT) and Nunavut (NU) are sent to reference laboratories in other provinces and reported results reflect specimens identified as originating from YT, NT or NU.

Results from British Columbia comprise of specimens from the following sites: BC Children's and Women's Hospital, Powell River Hospital, St. Paul's Hospital, Vancouver General Hospital, Victoria General Hospital, Interior Health Authority sites and Northern Health Authority sites.

Delays in the reporting of data may cause data to change retrospectively.

Table 2: Respiratory Virus Detections/Isolations for the period August 26, 2018 - June 29, 2019 (Reporting Weeks 201835-201926)

Reporting Laboratory	Flu Tested	A(H1N1)pdm09 Positive	A(H3) Positive	A(UnS) Positive	Total Flu A Positive	Total Flu B Positive	RSV Tested	RSV Positive	PIV Tested	PIV 1 Positive	PIV 2 Positive	PIV 3 Positive	PIV 4 Positive	Other PIV Positive	Adeno Tested	Adeno Positive	hMPV Tested	hMPV Positive	Entero/Rhino Tested	Entero/Rhino Positive	Coron Tested	Coron Positive
Newfoundland	5322	1	0	1034	1035	11	5322	486	5322	10	58	190	0	0	5322	47	5322	226	5322	354	N.A.	N.A.
Prince Edward Island	1267	221	56	1	278	2	1265	140	90	1	0	2	3	0	85	6	85	3	85	22	85	4
Nova Scotia	4143	0	0	786	786	22	4154	408	581	0	4	36	3	0	581	3	581	10	581	70	581	11
New Brunswick	14818	246	39	2598	2883	366	14817	1234	3841	0	18	129	43	0	3841	136	3841	151	3841	438	3841	179
Atlantic	25550	468	95	4419	4982	401	25558	2268	9834	11	80	357	49	0	9829	192	9829	390	9829	884	4507	194
Région Nord-Est	9578	0	0	1585	1585	68	7541	704	0	0	0	0	0	0	0	0	0	0	N.A.	N.A.	0	0
Québec-Chaudière-Appalaches	16514	0	0	3144	3144	81	16816	1583	3481	10	33	96	10	0	3593	129	2888	50	N.A.	N.A.	2765	31
Centre-du-Québec	18847	0	0	3649	3649	222	15185	1589	0	0	0	0	0	0	36	0	0	0	N.A.	N.A.	0	0
Montréal-Laval	43365	0	0	4683	4683	364	42151	3009	23042	118	161	486	40	0	23042	655	22278	499	N.A.	N.A.	22535	733
Ouest du Québec	13212	0	0	2701	2701	180	12114	1407	0	0	0	0	0	0	0	0	0	0	N.A.	N.A.	0	0
Montérégie	9333	0	0	1394	1395	52	8921	679	0	0	0	0	0	0	0	0	0	0	N.A.	N.A.	0	0
Province of Québec	110849	0	0	17156	17157	967	102728	8971	26523	128	194	582	50	0	26671	784	25166	549	N.A.	N.A.	25300	764
Ottawa P.H.L.	979	91	70	22	183	4	974	88	573	0	3	8	0	0	573	1	540	9	39	0	0	0
CHEO - Ottawa	8580	0	0	862	862	48	8579	937	962	6	13	27	6	0	963	28	962	18	955	230	933	41
Kingston P.H.L.	1010	67	71	12	150	16	1010	63	726	0	4	18	0	0	726	1	687	7	109	0	0	0
UHN / Mount Sinai Hospital	12742	6	15	755	776	58	12742	489	711	1	9	16	3	0	0	0	640	8	N.A.	N.A.	N.A.	N.A.
P.H.O.L. - Toronto	15080	893	717	100	1710	87	14643	542	12118	30	61	171	0	0	12119	65	11745	186	591	0	0	0
Sick Kids Hospital - Toronto	2956	115	46	123	284	40	2540	225	2540	25	37	71	26	0	2540	87	2540	109	2540	612	2540	137
Sunnybrook & Women's College HSC	2802	74	101	11	186	6	2802	62	2802	13	5	33	2	0	2802	1	2802	87	2802	223	2802	100
Sault Ste. Marie P.H.L.	442	47	42	3	92	0	374	18	343	0	3	2	0	0	343	0	336	5	11	0	0	0
Timmins P.H.L.	406	60	10	1	71	0	335	12	333	0	7	6	0	0	333	0	325	1	21	0	0	0
St. Joseph's - London	4760	3	0	530	533	6	4632	361	1676	6	6	42	15	0	1676	36	1661	54	1211	187	964	21
London P.H.L.	4265	320	205	60	585	18	4227	333	3023	6	23	53	0	0	3023	20	2901	43	222	0	0	0
Orillia P.H.L.	1311	67	78	23	168	2	1311	128	956	2	2	25	0	0	956	1	942	18	43	0	0	0
Thunder Bay P.H.L.	462	32	45	8	85	0	368	18	355	1	1	15	0	0	354	4	337	9	28	0	0	0
Sudbury P.H.L.	952	48	22	0	70	0	890	33	863	5	4	9	0	0	863	3	808	13	86	0	0	0
Hamilton P.H.L.	4148	236	225	33	494	14	4049	136	3299	15	15	79	0	0	3299	25	3238	52	172	0	0	0
Peterborough P.H.L.	1219	44	78	22	144	3	1215	49	968	3	4	12	0	0	968	1	951	12	21	0	0	0
Province of Ontario	62114	2103	1725	2565	6393	302	60691	3494	32248	113	197	587	52	0	31538	273	31415	631	9100	1268	7495	309
Manitoba	11189	334	131	728	1193	73	10604	631	4912	8	21	156	12	0	4912	57	3083	89	4912	603	3117	132
Regina	8831	1433	150	176	1759	85	8831	560	10653	4	64	234	37	0	8720	145	8720	179	8720	1568	8720	310
Saskatoon	6786	0	0	888	888	49	6786	445	6786	3	7	52	15	48	6786	61	6786	152	6786	527	6786	102
Province of Saskatchewan	15617	1433	150	1064	2647	134	15617	1005	17439	7	71	286	52	48	15506	206	15506	331	15506	2095	15506	412
Province of Alberta	39483	3642	1364	2221	7227	359	32339	0	32339	76	239	1062	253	0	32339	473	32339	967	32339	4860	32339	1376
Prairies	66289	5409	1645	4013	11067	566	58560	1636	54690	91	331	1504	317	48	52757	736	50928	1387	52757	7558	50962	1920
British Columbia	27189	3159	1613	1604	6376	238	27152	1576	12075	19	73	489	114	0	12075	167	12075	79	9256	1871	9256	499
Yukon	406	65	30	38	133	0	406	18	N.A.	N.A.	N.A.	N.A.	N.A.	N.A.	N.A.	N.A.	N.A.	N.A.	N.A.	N.A.	N.A.	N.A.
Northwest Territories	804	175	6	0	181	3	799	0	799	6	0	32	4	0	799	26	799	11	799	141	799	47
Nunavut	123	20	0	0	20	0	123	0	123	4	0	4	0	0	123	18	122	0	123	36	122	9
Territories	1333	260	36	38	334	3	1328	18	922	10	0	36	4	0	922	44	921	11	922	177	921	56
CANADA	293324	11399	5114	29795	46309	2477	276017	17963	136292	372	875	3555	586	48	133792	2196	130334	3047	81864	11758	98441	3742

Specimens from YT, NT and NU are sent to reference laboratories in other provinces and reported results reflect specimens identified as originating from YT, NT or NU.

Results from British Columbia comprise of specimens from the following sites: BC Children's and Women's Hospital, Powell River Hospital - St. Paul's Hospital - Vancouver General Hospital, Victoria General Hospital, Interior Health Authority sites and Northern Health Authority sites.

Delays in the reporting of data may cause data to change retrospectively.

Due to reporting delays, the sum of weekly report totals do not add up to cumulative totals.

Figure 1: Number positive laboratory tests for other respiratory viruses by report week, Canada, 2018-19

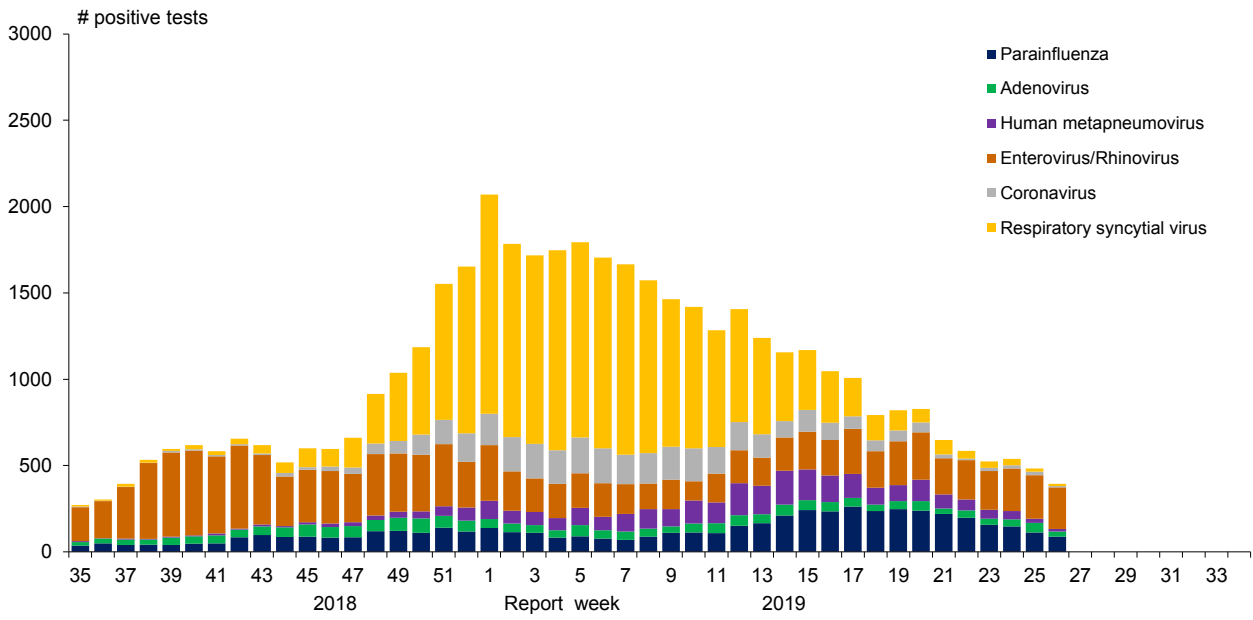


Figure 2: Positive Influenza Tests (%) in Canada by Region by Week of Report

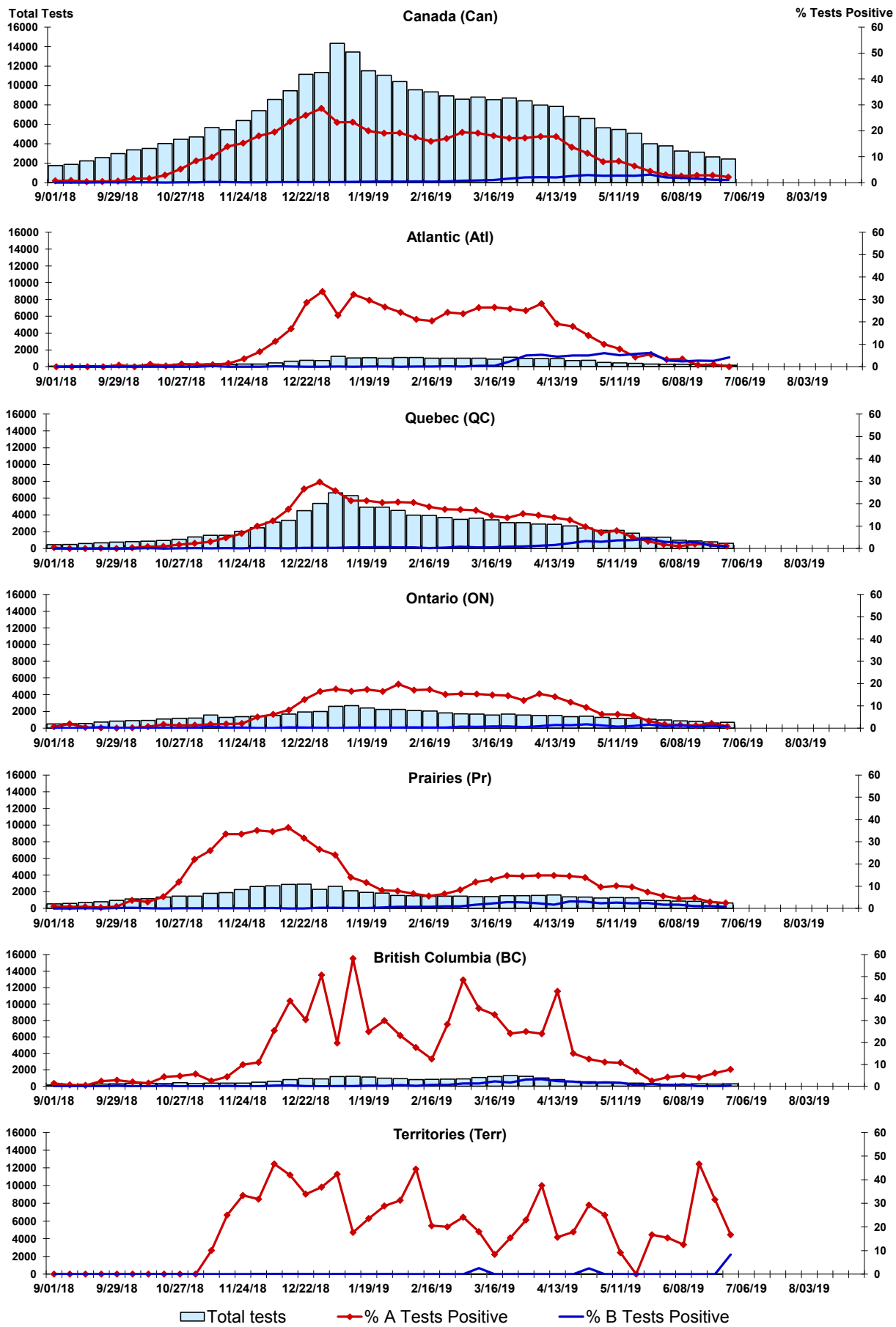


Figure 3: Positive Respiratory syncytial virus (RSV) Tests (%) in Canada by Region by Week of Report

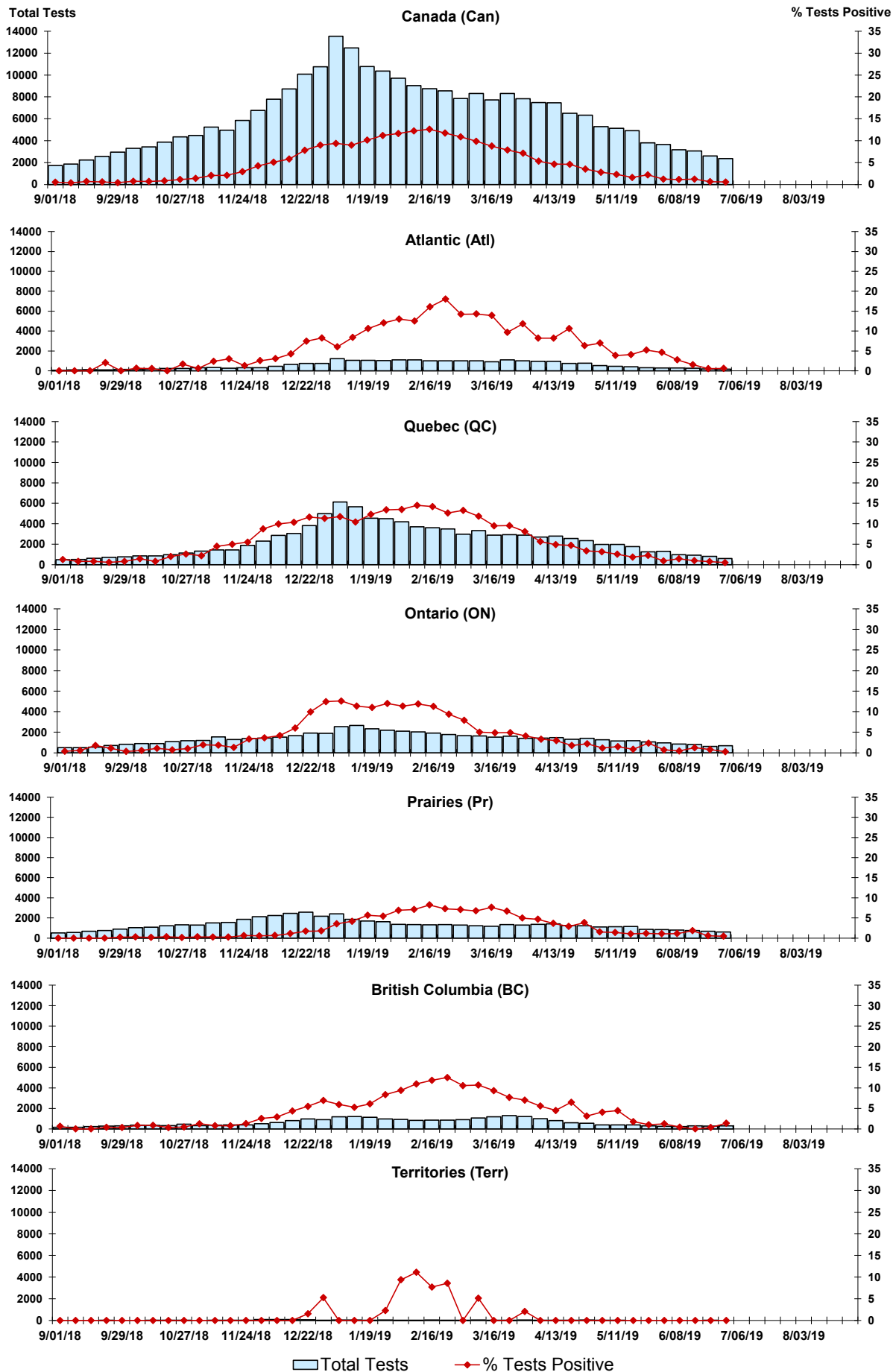


Figure 4: Positive Parainfluenza (PIV) Tests (%) in Canada by Region by Week of Report

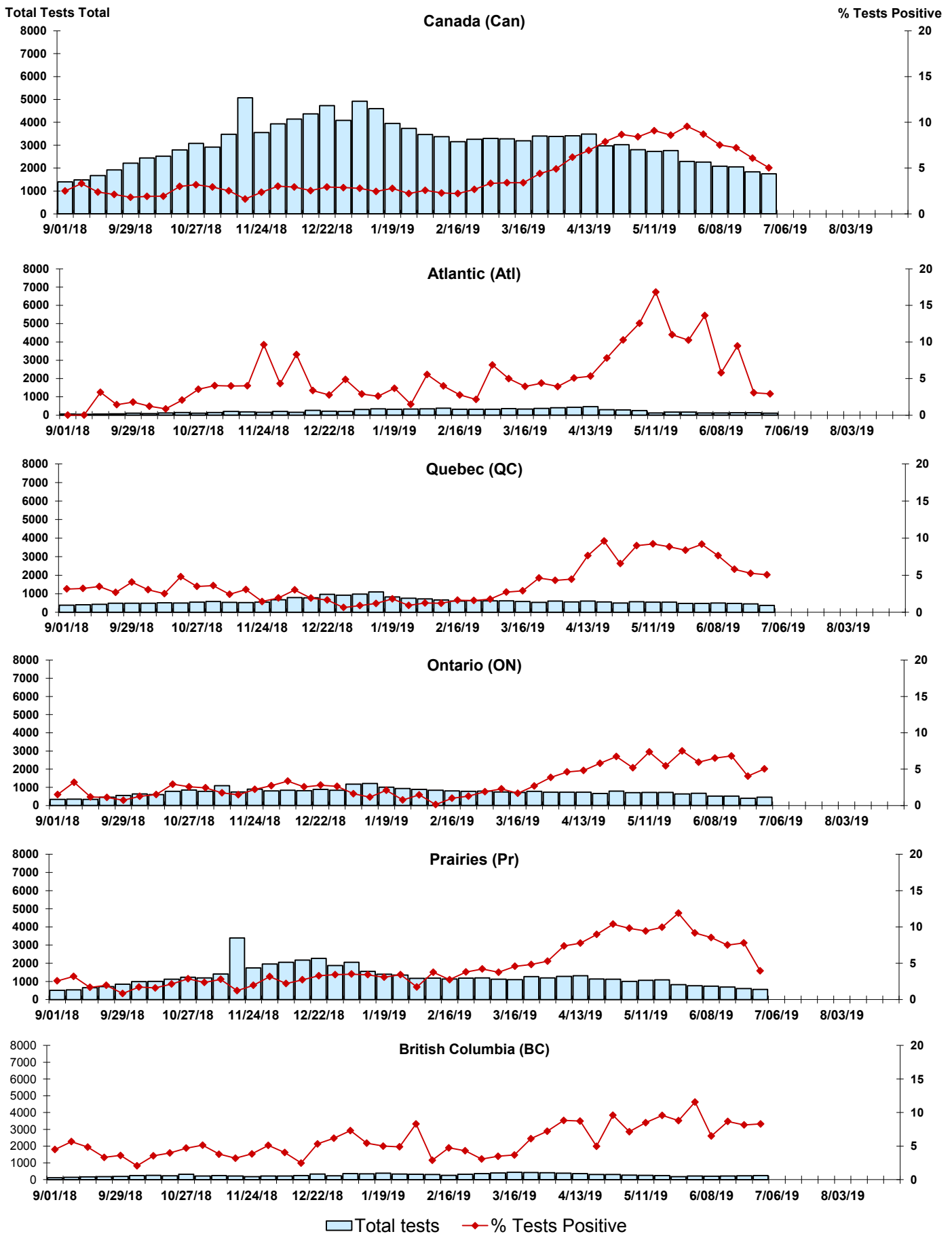


Figure 5: Positive Adenovirus (adeno) Tests (%) in Canada by Region by Week of Report

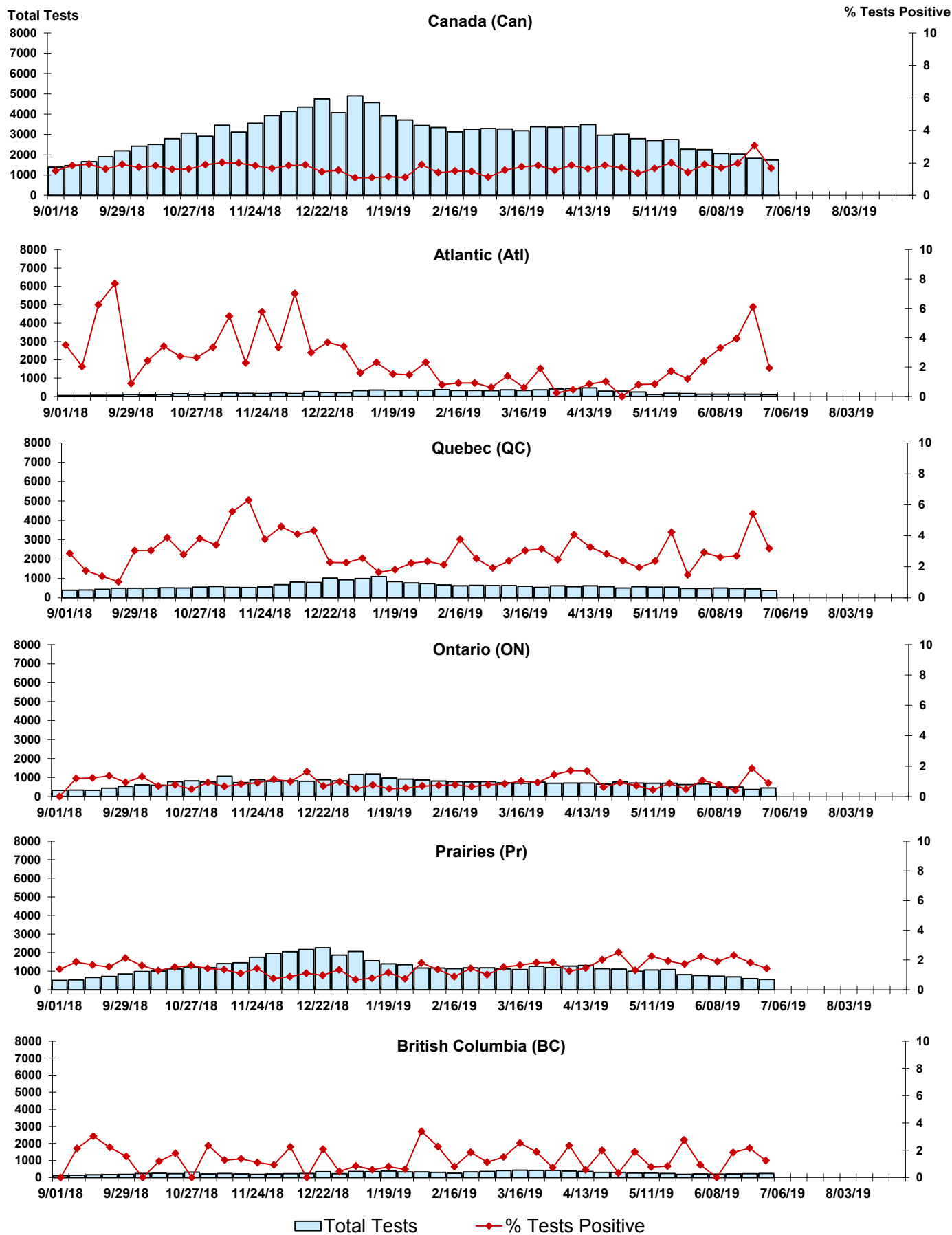


Figure 6: Positive human metapneumovirus (hMPV) Tests (%) in Canada by Region by Week of Report

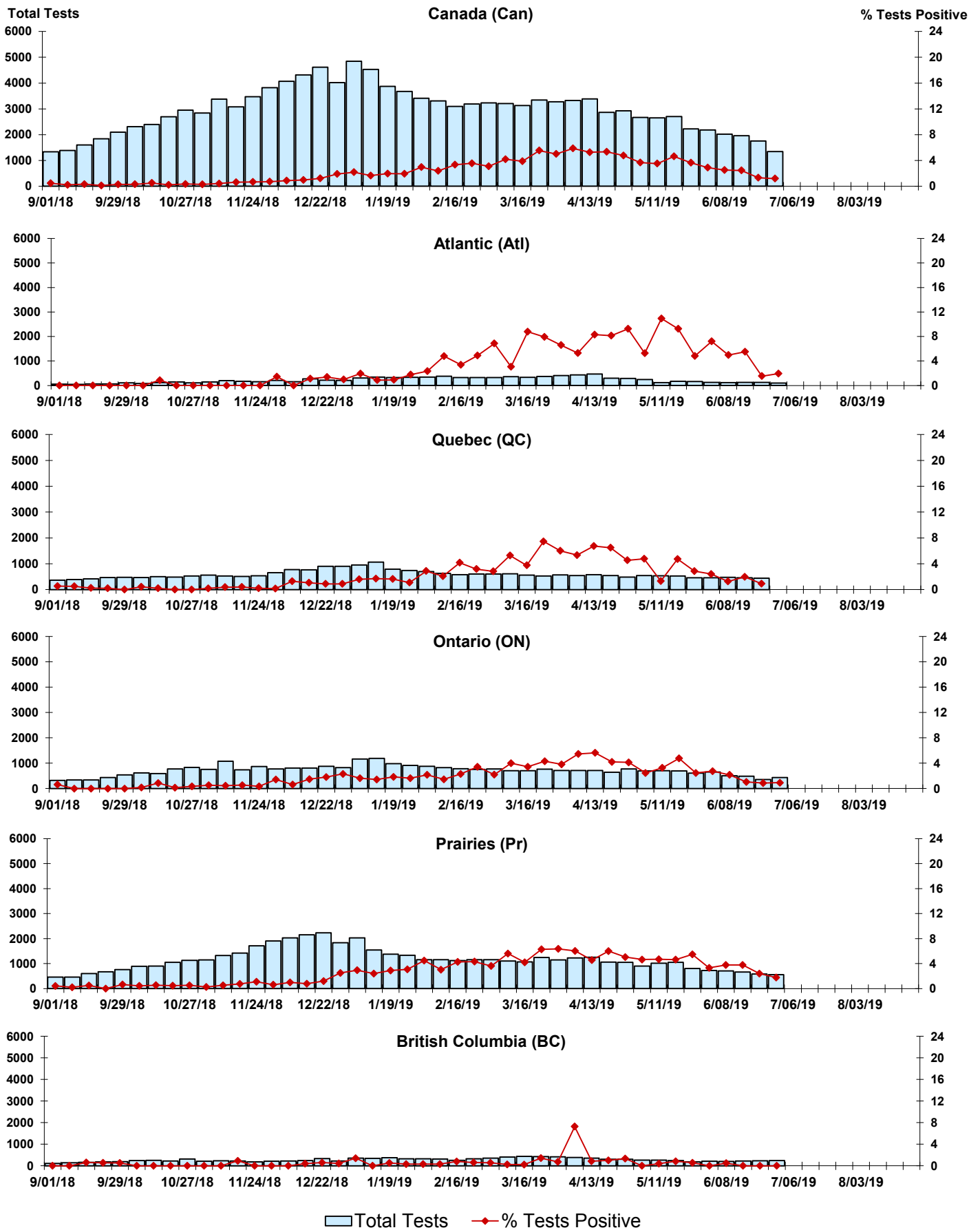


Figure 7: Positive Enterovirus/Rhinovirus (entero/rhino) Tests (%) in Canada by Region by Week of Report

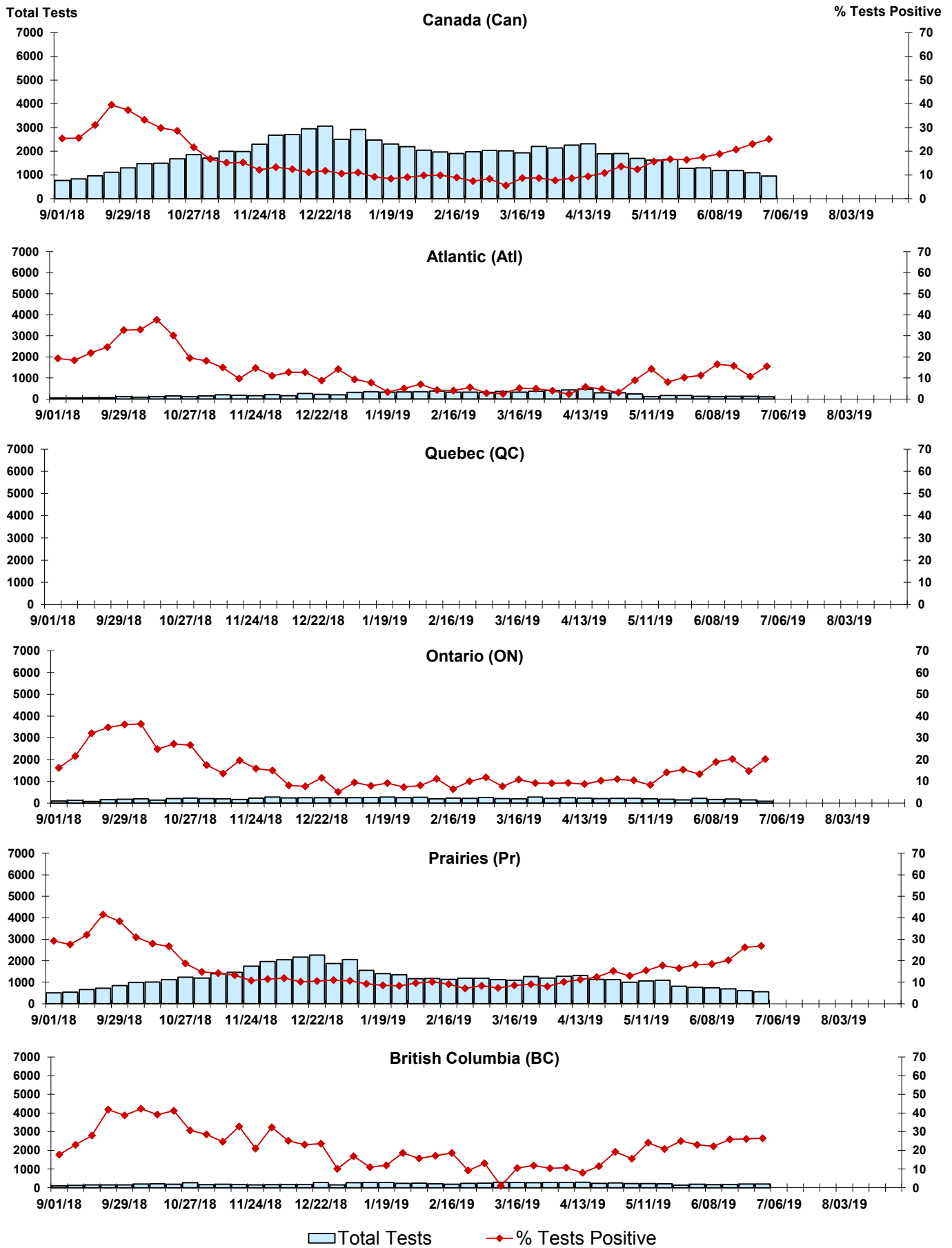
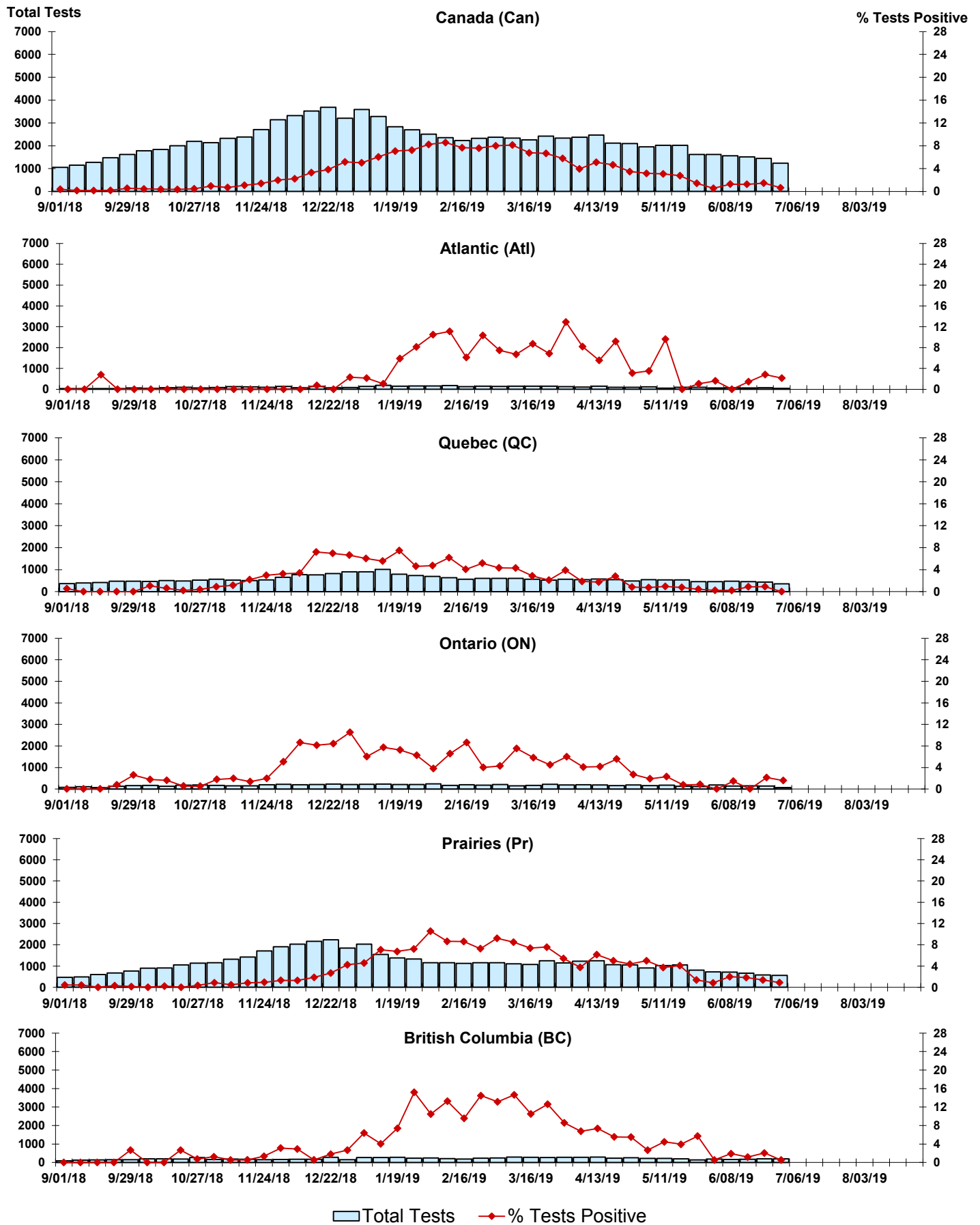


Figure 8: Positive Coronavirus (coron) Tests (%) in Canada by Region by Week of Report



Abbreviations:

A(H1N1)pdm09: Influenza A(H1N1)pdm09

A(H3): Influenza A(H3N2)

A (UnS): Influenza A (Unsubtyped)

Adeno: Adenovirus

CHEO: Children's Hospital of Eastern Ontario

Coron: Coronavirus

Entero: Enterovirus

hMPV: human metapneumovirus

HSC: Health Sciences Centre

N.A.: Not Applicable

P.H.L.: Public Health Laboratory

P.H.O.L.: Public Health Ontario Laboratory

PIV: Parainfluenza

Rhino: Rhinovirus

RSV: Respiratory syncytial virus

UHN: University Health Network

Notes:

Specimens from Yukon (YT), Northwest Territories (NT) and Nunavut (NU) are sent to reference laboratories in other provinces. Results reported for the Territories reflect the number of specimens that are identified as originating from YT, NT or NU.

Delays in the reporting of data may cause data to change retrospectively.

Due to reporting delays, the sum of weekly report totals do not add up to cumulative totals.