

Respiratory Virus Detections in Canada

Respiratory Virus Report, Week 30 - ending July 27, 2019

The Respiratory Virus Detection Surveillance System collects data from select laboratories across Canada on the number of tests performed and the number of tests positive for influenza and other respiratory viruses. Data are reported on a weekly basis year-round to the Centre for Immunization and Respiratory Infectious Diseases (CIRID), Public Health Agency of Canada. These data are also summarized in the weekly FluWatch report.

Table 1: Respiratory Virus Detections/Isolations for the week ending July 27, 2019 (Reporting Week 201930)

Reporting Laboratory	Flu Tested	A(H1N1)pdm09 Positive	A(H3) Positive	A(UnS) Positive	Total Flu A Positive	Total Flu B Positive	RSV Tested	RSV Positive	PIV Tested	PIV 1 Positive	PIV 2 Positive	PIV 3 Positive	PIV 4 Positive	Other PIV Positive	Adeno Tested	Adeno Positive	hMPV Tested	hMPV Positive	Entero/Rhino Tested	Entero/Rhino Positive	Coron Tested	Coron Positive
Newfoundland	31	0	0	0	0	0	31	0	31	0	0	1	0	0	31	0	31	1	31	8	N.A.	N.A.
Prince Edward Island	0	0	0	0	0	0	0	0	0	0	0	0	0	0	0	0	0	0	0	0	0	0
Nova Scotia	4	0	0	0	0	0	4	0	2	0	2	0	0	0	2	0	2	0	2	1	2	0
New Brunswick	95	0	0	0	0	0	95	0	45	1	0	0	0	0	45	2	45	0	45	1	45	0
Atlantic	130	0	0	0	0	0	130	0	78	1	0	2	0	0	78	2	78	1	78	10	47	0
Région Nord-Est	19	0	0	0	0	0	18	0	0	0	0	0	0	0	0	0	0	0	N.A.	N.A.	0	0
Québec-Chaudière-Appalaches	25	0	0	0	0	0	27	0	40	0	1	0	0	0	41	3	0	0	N.A.	N.A.	39	0
Centre-du-Québec	21	0	0	0	0	0	20	1	0	0	0	0	0	0	0	0	0	0	N.A.	N.A.	0	0
Montréal-Laval	353	0	0	0	0	3	378	3	306	5	1	4	0	0	306	7	0	0	N.A.	N.A.	303	1
Ouest du Québec	22	0	0	0	0	0	22	0	0	0	0	0	0	0	0	0	0	0	N.A.	N.A.	0	0
Montréal	20	0	0	0	0	0	20	0	0	0	0	0	0	0	0	0	0	0	N.A.	N.A.	0	0
Province of Québec	460	0	0	0	0	3	485	4	346	5	2	4	0	0	347	10	0	0	N.A.	N.A.	342	1
Ottawa P.H.L.	9	0	0	0	0	0	9	0	6	0	0	0	0	0	6	0	6	0	0	0	0	0
CHEO - Ottawa	0	0	0	0	0	0	0	0	0	0	0	0	0	0	0	0	0	0	0	0	0	0
Kingston P.H.L.	8	0	0	0	0	0	8	0	5	0	0	0	0	0	5	0	5	0	0	0	0	0
UHN / Mount Sinai Hospital	133	0	0	1	1	1	133	1	14	0	0	0	0	0	0	0	14	0	N.A.	N.A.	N.A.	N.A.
P.H.O.L. - Toronto	172	1	0	0	1	0	172	0	172	0	4	0	0	0	172	5	160	1	12	0	0	0
Sick Kids Hospital - Toronto	52	0	0	0	0	0	52	0	52	3	0	0	0	0	52	0	52	4	52	13	52	0
Sunnybrook & Women's College HSC	6	0	0	0	0	0	6	0	6	0	0	0	0	0	6	0	6	0	6	1	6	0
Sault Ste. Marie P.H.L.	0	0	0	0	0	0	0	0	0	0	0	0	0	0	0	0	0	0	0	0	0	0
Timmins P.H.L.	1	0	0	0	0	0	1	0	1	0	0	0	0	0	1	0	1	0	0	0	0	0
St. Joseph's - London	19	0	0	0	0	0	19	0	19	1	0	0	0	0	19	1	19	1	19	5	17	0
London P.H.L.	29	0	0	0	0	0	29	0	27	0	0	0	0	0	27	0	24	0	6	0	0	0
Orillia P.H.L.	9	0	0	0	0	0	8	0	5	0	0	0	0	0	5	0	3	0	2	0	0	0
Thunder Bay P.H.L.	3	0	0	0	0	0	3	0	3	0	0	0	0	0	3	1	3	0	0	0	0	0
Sudbury P.H.L.	1	0	0	0	0	0	1	0	1	0	0	0	0	0	1	0	1	0	0	0	0	0
Hamilton P.H.L.	34	0	0	0	0	0	34	0	32	0	0	1	0	0	32	0	31	0	1	0	0	0
Peterborough P.H.L.	16	0	0	0	0	0	16	0	10	0	0	0	0	0	10	0	9	0	1	0	0	0
Province of Ontario	492	1	0	1	2	1	491	1	353	4	0	5	0	0	339	7	334	6	113	21	89	0
Manitoba	74	0	0	0	0	0	71	0	46	0	0	1	0	0	46	0	19	0	46	11	19	0
Regina	61	0	0	0	0	0	61	1	27	0	0	0	0	0	27	1	27	1	27	11	27	0
Saskatoon	57	0	0	0	0	1	57	0	57	0	0	2	0	0	57	0	57	0	57	19	57	0
Province of Saskatchewan	118	0	0	0	0	1	118	1	84	0	0	2	0	0	84	1	84	1	84	30	84	0
Province of Alberta	360	0	4	2	6	1	340	0	340	3	0	2	0	0	340	2	340	3	340	73	340	1
Prairies	552	0	4	2	6	2	529	1	470	3	0	5	0	0	470	3	443	4	470	114	443	1
British Columbia	231	0	9	2	11	0	231	1	166	1	3	5	0	0	166	0	166	0	133	20	133	1
Yukon	0	0	0	0	0	0	0	0	N.A.	N.A.	N.A.	N.A.	N.A.	N.A.	N.A.	N.A.	N.A.	N.A.	N.A.	N.A.	N.A.	N.A.
Northwest Territories	3	0	0	0	0	0	3	0	3	0	0	0	0	0	3	0	3	0	3	1	3	0
Nunavut	0	0	0	0	0	0	0	0	0	0	0	0	0	0	0	0	0	0	0	0	0	0
Territories	3	0	0	0	0	0	3	0	3	0	0	0	0	0	3	0	3	0	3	1	3	0
CANADA	1868	1	13	5	19	6	1869	7	1416	14	5	21	0	0	1403	22	1024	11	797	166	1057	3

Specimens from Yukon (YT), Northwest Territories (NT) and Nunavut (NU) are sent to reference laboratories in other provinces and reported results reflect specimens identified as originating from YT, NT or NU.

Results from British Columbia comprise of specimens from the following sites: BC Children's and Women's Hospital, Powell River Hospital, St. Paul's Hospital, Vancouver General Hospital, Victoria General Hospital, Interior Health Authority sites and Northern Health Authority sites.

Delays in the reporting of data may cause data to change retrospectively.

Table 2: Respiratory Virus Detections/Isolations for the period August 26, 2018 - July 27, 2019 (Reporting Weeks 201835-201930)

Reporting Laboratory	Flu Tested	A(H1N1)pdm09 Positive	A(H3) Positive	A(UnS) Positive	Total Flu A Positive	Total Flu B Positive	RSV Tested	RSV Positive	PIV Tested	PIV 1 Positive	PIV 2 Positive	PIV 3 Positive	PIV 4 Positive	Other PIV Positive	Adeno Tested	Adeno Positive	hMPV Tested	hMPV Positive	Entero/Rhino Tested	Entero/Rhino Positive	Coron Tested	Coron Positive	
Newfoundland	5481	1	0	1034	1035	13	5481	489	5481	11	59	201	0	0	5481	51	5481	229	5481	377	N.A.	N.A.	
Prince Edward Island	1271	221	56	2	279	2	1269	140	91	1	0	2	3	0	86	6	86	3	86	22	86	4	
Nova Scotia	4202	0	0	786	786	22	4213	408	618	1	4	39	3	0	618	3	618	10	618	77	618	11	
New Brunswick	15113	246	39	2598	2883	366	15112	1237	3958	2	18	137	45	0	3958	140	3958	151	3958	449	3958	179	
Atlantic	26067	468	95	4420	4983	403	26075	2274	10148	15	81	379	51	0	10143	200	10143	393	10143	925	4662	194	
Région Nord-Est	9658	0	0	1585	1585	68	7618	704	0	0	0	0	0	0	0	0	0	0	0	N.A.	N.A.	0	0
Québec-Chaudière-Appalaches	16651	0	0	3144	3144	82	16966	1585	3671	10	34	105	11	0	3785	137	2888	50	N.A.	N.A.	2947	31	
Centre-du-Québec	18946	0	0	3649	3649	225	15285	1592	0	0	0	0	0	0	36	0	0	0	N.A.	N.A.	0	0	
Montréal-Laval	44891	0	0	4686	4686	371	43739	3020	24295	139	163	508	40	0	24295	697	22278	499	N.A.	N.A.	23762	738	
Ouest du Québec	13328	0	0	2702	2702	181	12228	1408	0	0	0	0	0	0	0	0	0	0	N.A.	N.A.	0	0	
Montérégie	9456	0	0	1395	1396	54	9044	679	0	0	0	0	0	0	0	0	0	0	N.A.	N.A.	0	0	
Province of Québec	112930	0	0	17161	17162	981	104880	8988	27966	149	197	613	51	0	28116	834	25166	549	N.A.	N.A.	26709	769	
Ottawa P.H.L.	999	91	70	22	183	4	994	88	590	0	3	8	0	0	590	1	555	9	41	0	0	0	
CHEO - Ottawa	8762	0	0	862	862	50	8761	939	1022	6	13	28	6	0	1023	30	1022	18	1015	245	991	41	
Kingston P.H.L.	1042	67	71	12	150	16	1042	63	755	0	4	18	0	0	755	1	715	7	115	0	0	0	
UHN / Mount Sinai Hospital	13323	6	15	758	779	62	13323	497	766	1	9	17	3	0	0	0	695	8	N.A.	N.A.	N.A.	N.A.	
P.H.O.L. - Toronto	15782	897	719	98	1714	87	15342	542	12814	36	61	185	0	0	12815	72	12402	188	646	0	0	0	
Sick Kids Hospital - Toronto	3145	115	47	123	285	40	2729	225	2729	35	37	75	27	0	2729	90	2729	121	2729	667	2729	138	
Sunnybrook & Women's College HSC	2824	74	101	11	186	6	2824	62	2824	13	5	33	4	0	2824	1	2824	87	2824	228	2824	100	
Sault Ste. Marie P.H.L.	443	47	42	3	92	0	375	18	345	0	3	2	0	0	345	0	336	5	13	0	0	0	
Timmins P.H.L.	420	60	10	1	71	0	349	12	347	0	7	6	0	0	347	0	339	1	24	0	0	0	
St. Joseph's - London	4864	3	1	530	534	6	4736	361	1779	7	6	43	15	0	1779	40	1764	56	1307	211	1058	21	
London P.H.L.	4371	320	205	60	585	18	4333	333	3126	6	23	58	0	0	3126	20	2995	43	242	0	0	0	
Orillia P.H.L.	1348	67	78	23	168	2	1347	128	988	3	2	25	0	0	988	1	971	19	49	0	0	0	
Thunder Bay P.H.L.	473	32	45	8	85	0	379	18	366	1	1	15	0	0	365	6	346	9	31	0	0	0	
Sudbury P.H.L.	964	48	22	0	70	0	902	33	874	5	4	9	0	0	874	3	817	13	88	0	0	0	
Hamilton P.H.L.	4258	236	225	33	494	14	4159	136	3406	17	15	81	0	0	3406	25	3339	52	181	0	0	0	
Peterborough P.H.L.	1292	44	78	22	144	3	1288	49	1036	4	4	13	0	0	1036	1	1013	12	27	0	0	0	
Province of Ontario	64310	2107	1729	2566	6402	308	62883	3504	33767	134	197	616	55	0	33002	291	32862	648	9633	1372	7872	310	
Manitoba	11681	335	131	727	1193	77	11058	632	5224	9	22	169	13	0	5224	60	3263	89	5224	670	3296	132	
Regina	9202	1433	150	181	1764	88	9202	561	10826	4	65	240	38	0	8893	149	8893	181	8893	1634	8893	310	
Saskatoon	7061	0	0	889	889	50	7061	445	7061	4	7	56	15	48	7061	67	7061	153	7061	594	7061	103	
Province of Saskatchewan	16263	1433	150	1070	2653	138	16263	1006	17887	8	72	296	53	48	15954	216	15954	334	15954	2228	15954	413	
Province of Alberta	41197	3642	1389	2225	7256	366	33934	0	33934	94	247	1103	256	0	33934	500	33934	992	33934	5243	33934	1387	
Prairies	69141	5410	1670	4022	11102	581	61255	1638	57045	111	341	1568	322	48	55112	776	53151	1415	55112	8141	53184	1932	
British Columbia	28201	3162	1655	1622	6439	242	28164	1585	12892	29	80	505	117	0	12842	177	12842	79	9901	1988	9901	513	
Yukon	417	66	32	39	137	0	417	18	N.A.	N.A.	N.A.	N.A.	N.A.	N.A.	N.A.	N.A.	N.A.	N.A.	N.A.	N.A.	N.A.	N.A.	
Northwest Territories	817	175	6	0	181	3	812	0	812	6	0	32	4	0	812	27	812	11	812	146	812	47	
Nunavut	126	20	0	0	20	0	126	0	126	4	0	4	0	0	126	18	125	0	126	37	125	9	
Territories	1360	261	38	39	338	3	1355	18	938	10	0	36	4	0	938	45	937	11	938	183	937	56	
CANADA	302009	11408	5187	29830	46426	2518	284612	18007	142756	448	896	3717	600	48	140153	2323	135101	3095	85727	12609	103265	3774	

Specimens from YT, NT and NU are sent to reference laboratories in other provinces and reported results reflect specimens identified as originating from YT, NT or NU.

Results from British Columbia comprise of specimens from the following sites: BC Children's and Women's Hospital, Powell River Hospital, St. Paul's Hospital, Vancouver General Hospital, Victoria General Hospital, Interior Health Authority sites and Northern Health Authority sites.

Delays in the reporting of data may cause data to change retrospectively.

Due to reporting delays, the sum of weekly report totals do not add up to cumulative totals.

Figure 1: Number positive laboratory tests for other respiratory viruses by report week, Canada, 2018-19

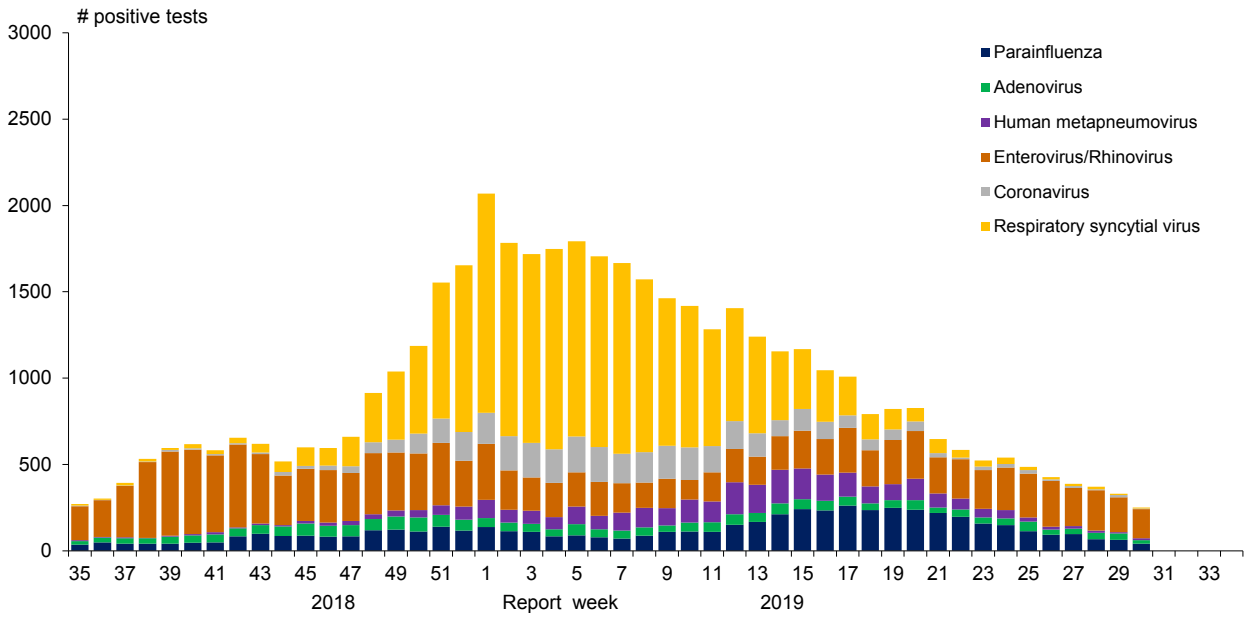


Figure 2: Positive Influenza Tests (%) in Canada by Region by Week of Report

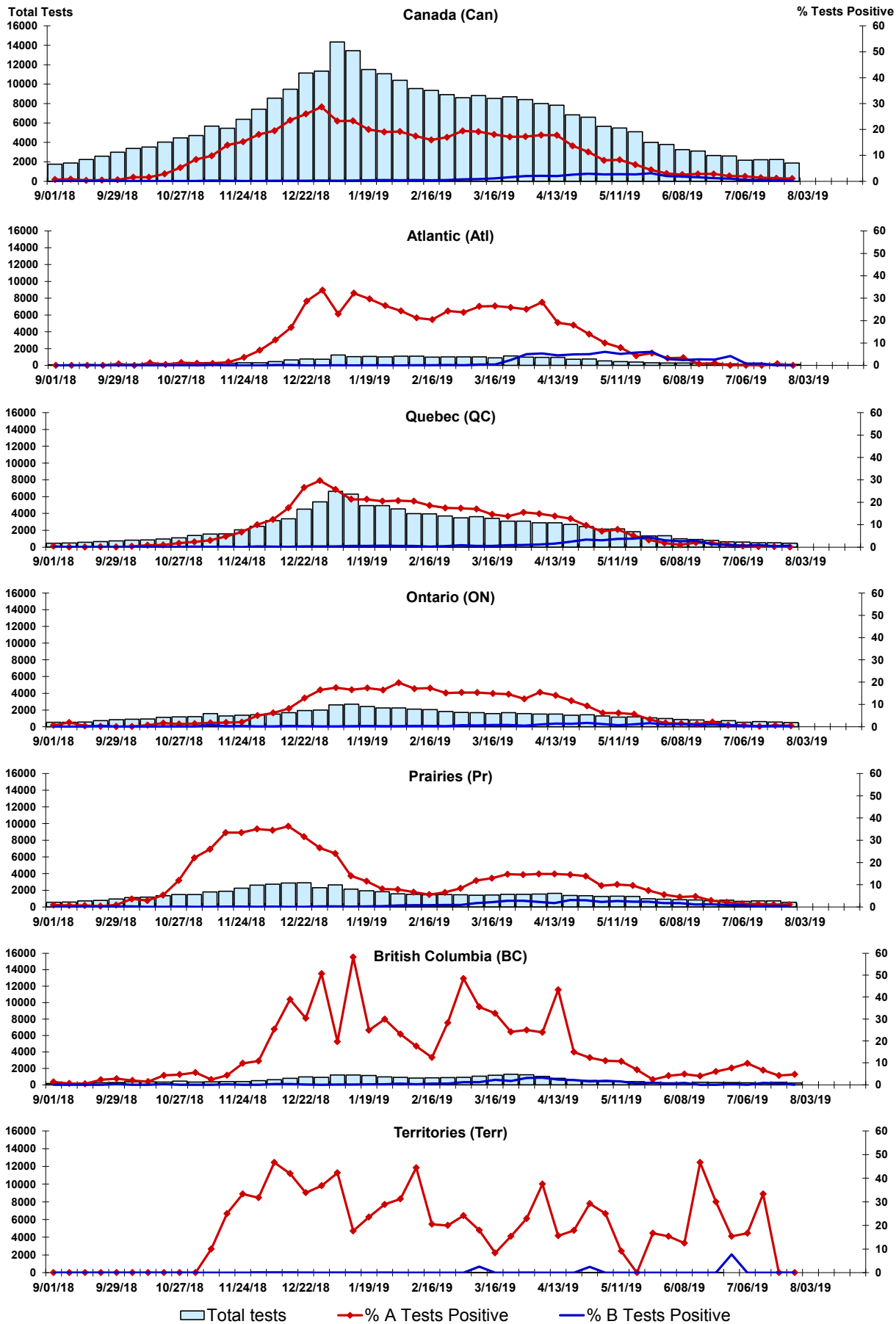


Figure 3: Positive Respiratory syncytial virus (RSV) Tests (%) in Canada by Region by Week of Report

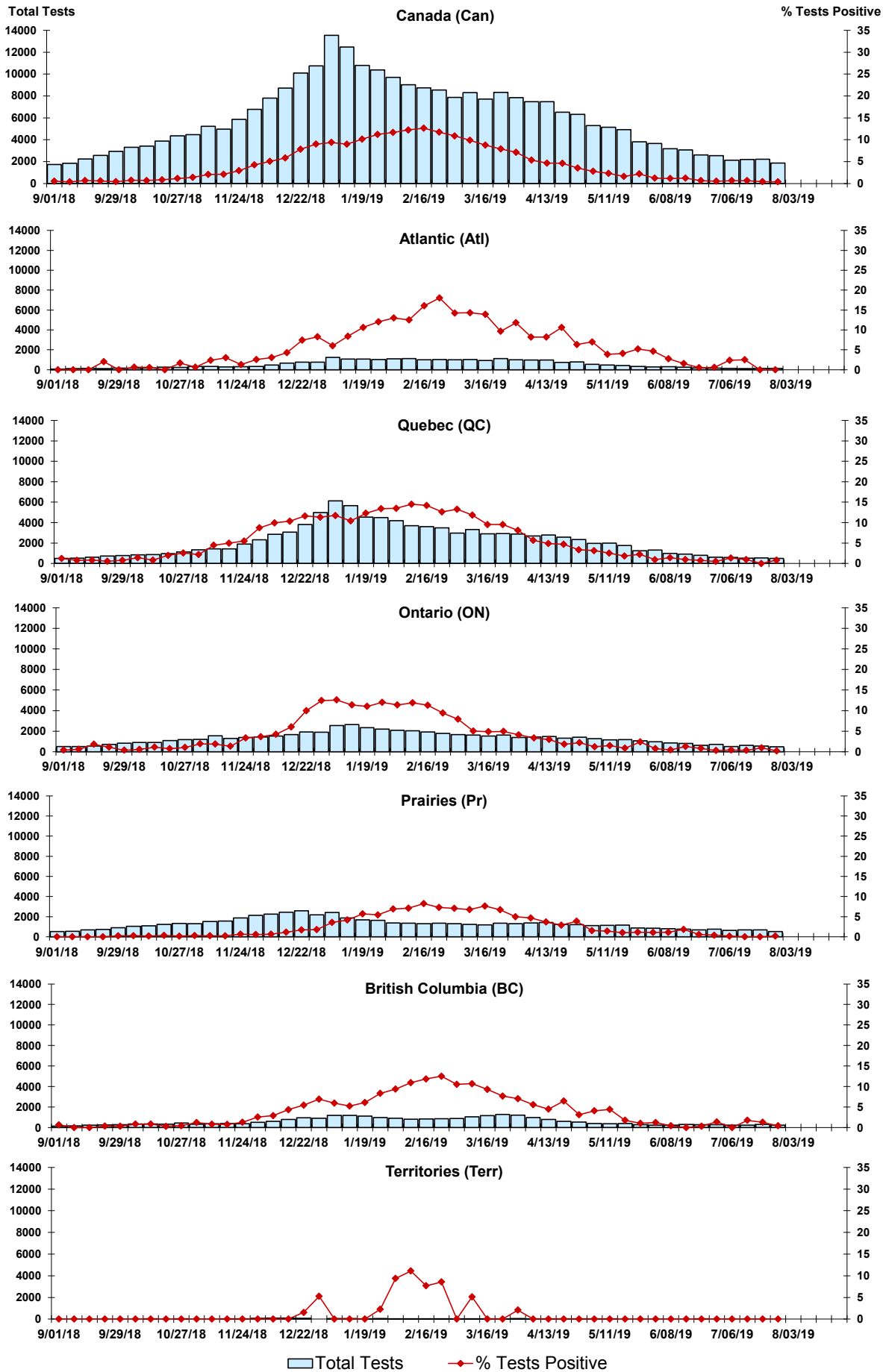


Figure 4: Positive Parainfluenza (PIV) Tests (%) in Canada by Region by Week of Report

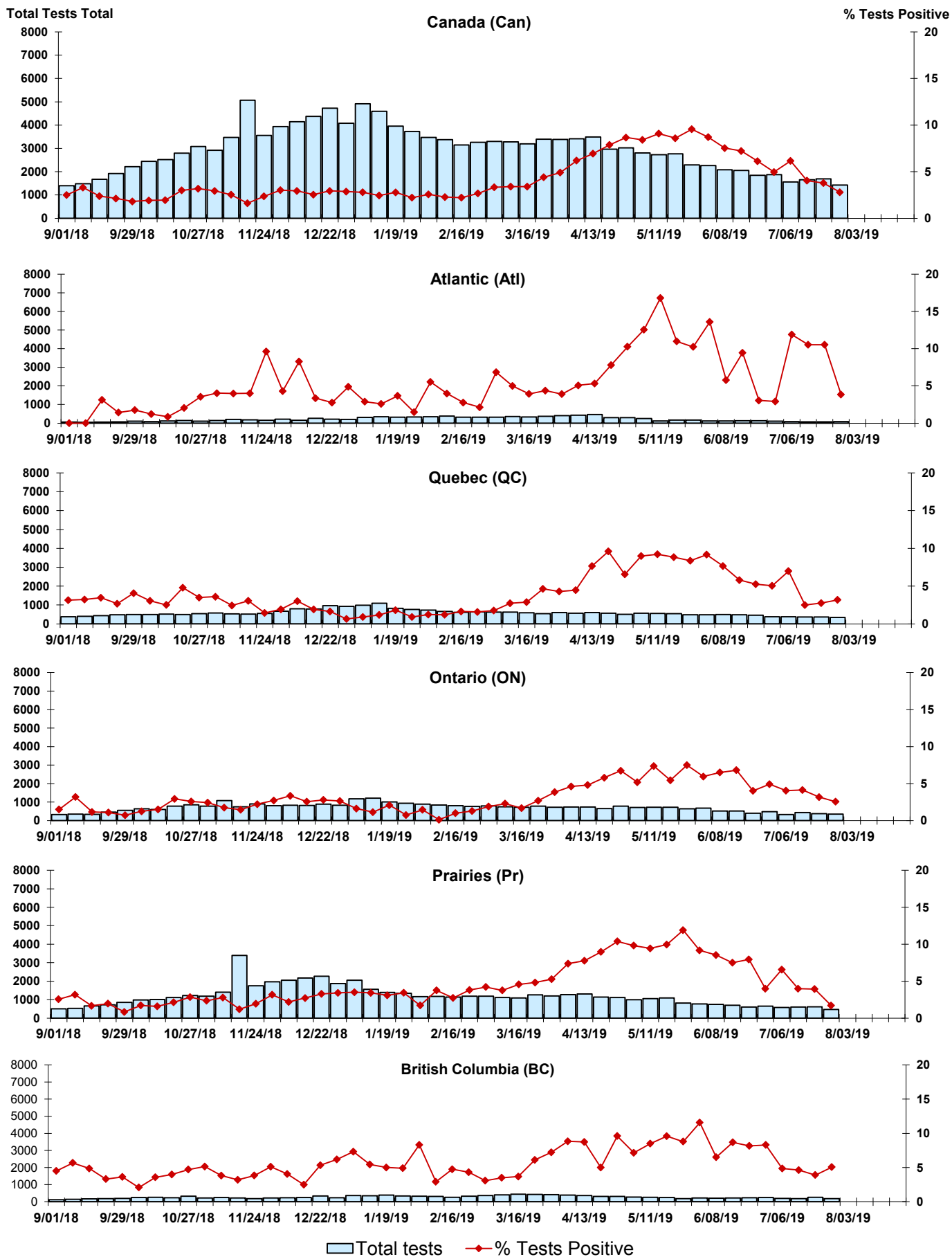


Figure 5: Positive Adenovirus (adeno) Tests (%) in Canada by Region by Week of Report

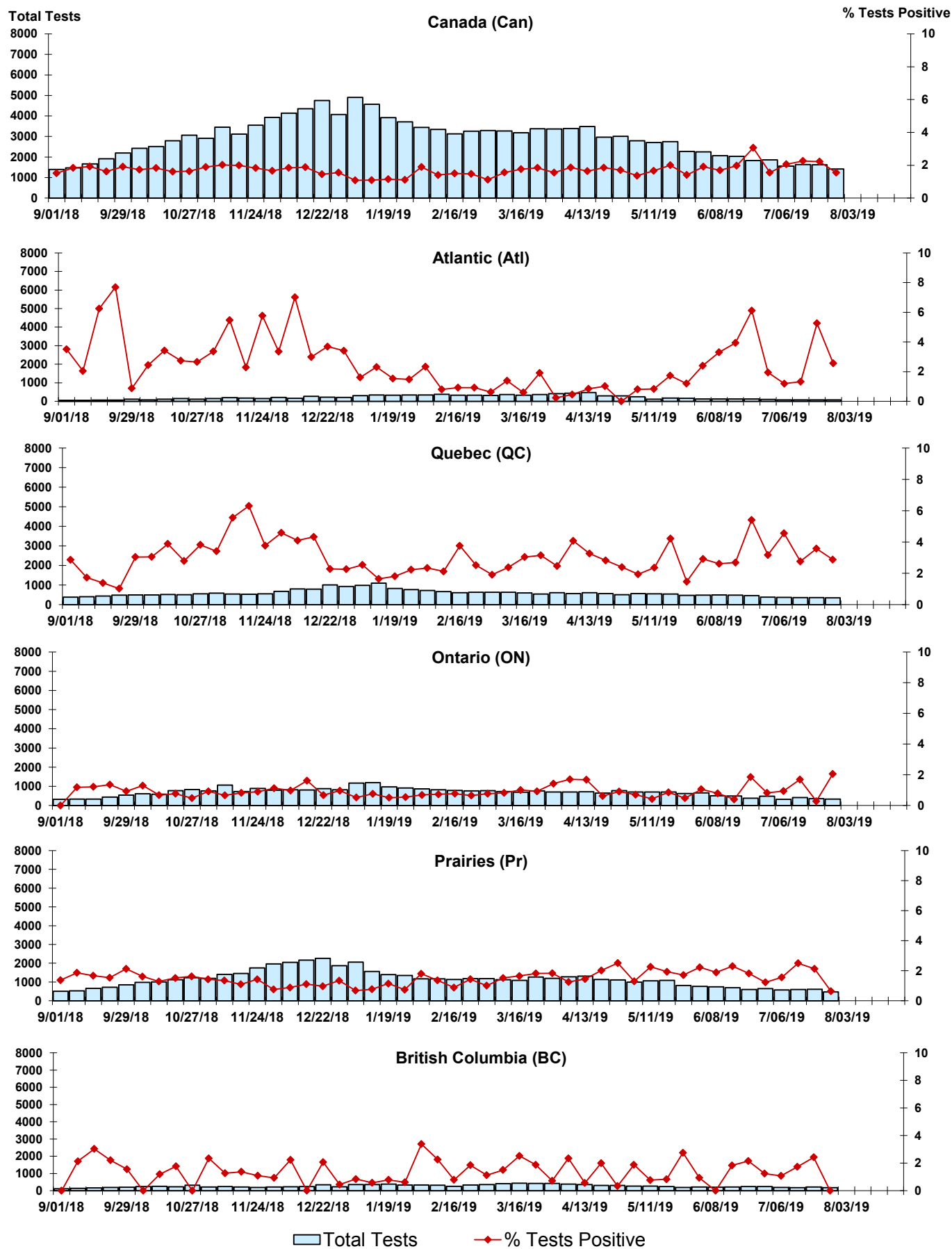
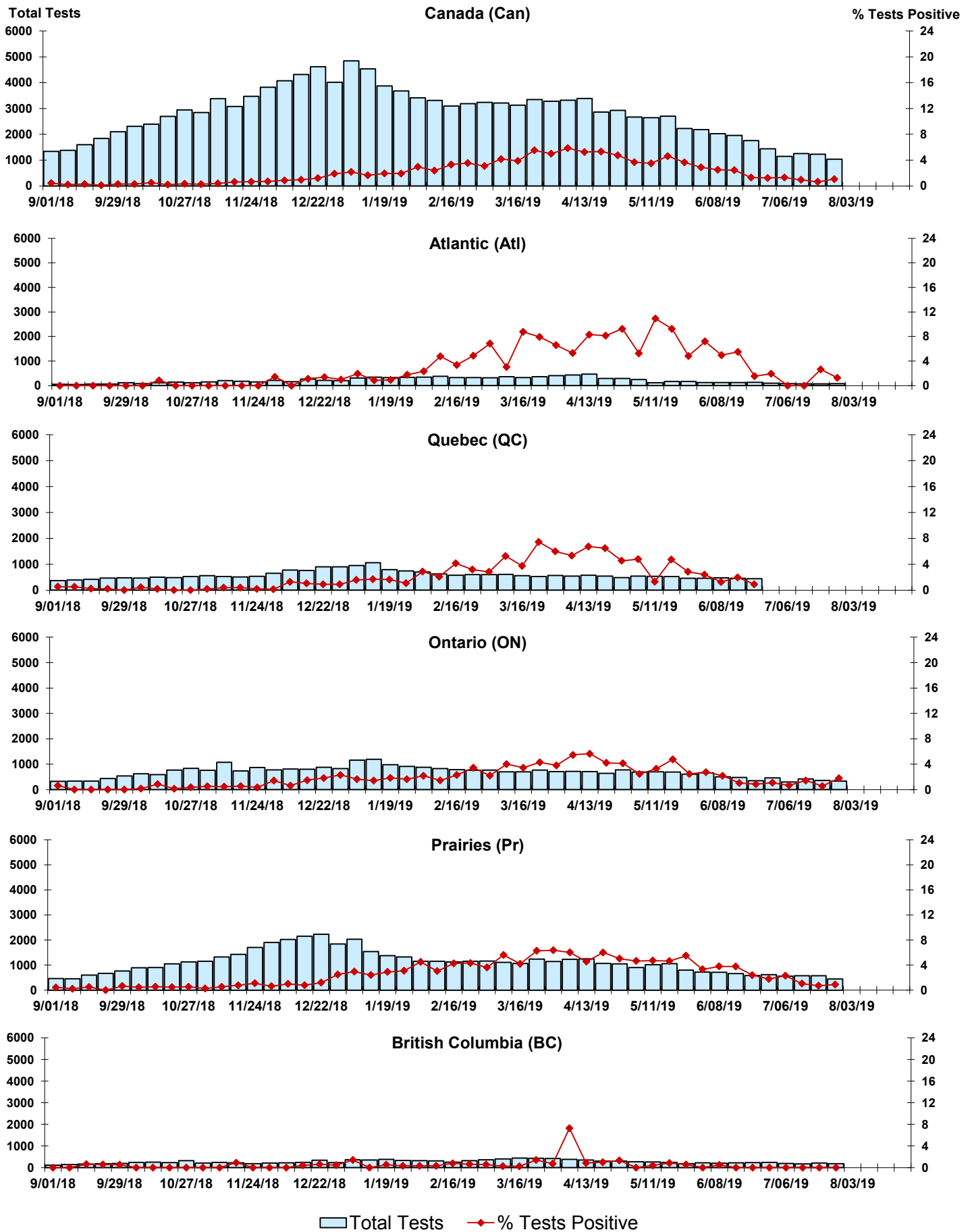


Figure 6: Positive human metapneumovirus (hMPV) Tests (%) in Canada by Region by Week of Report



Legend: █ Total Tests ◆ % Tests Positive

Figure 7: Positive Enterovirus/Rhinovirus (entero/rhino) Tests (%) in Canada by Region by Week of Report

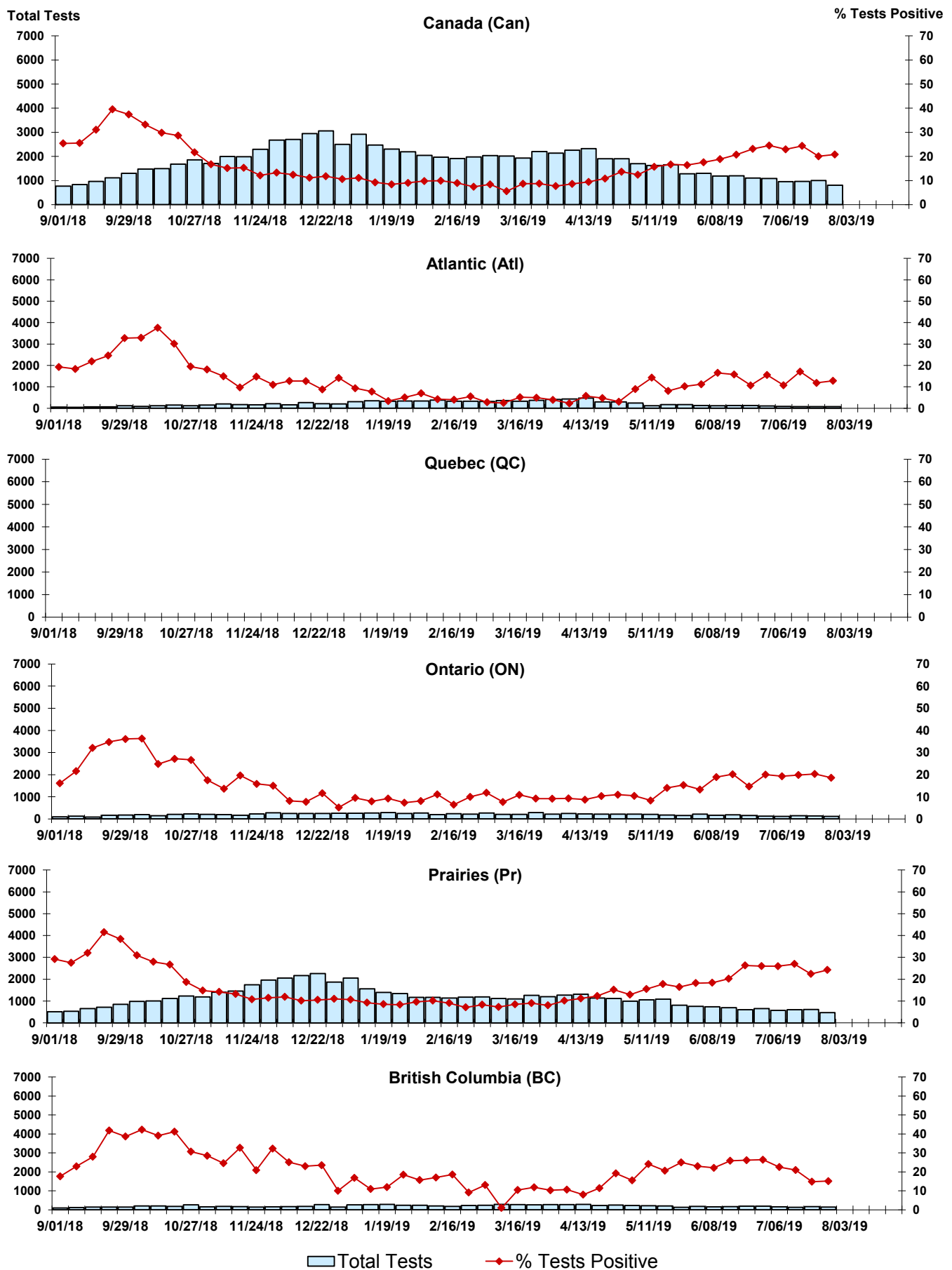
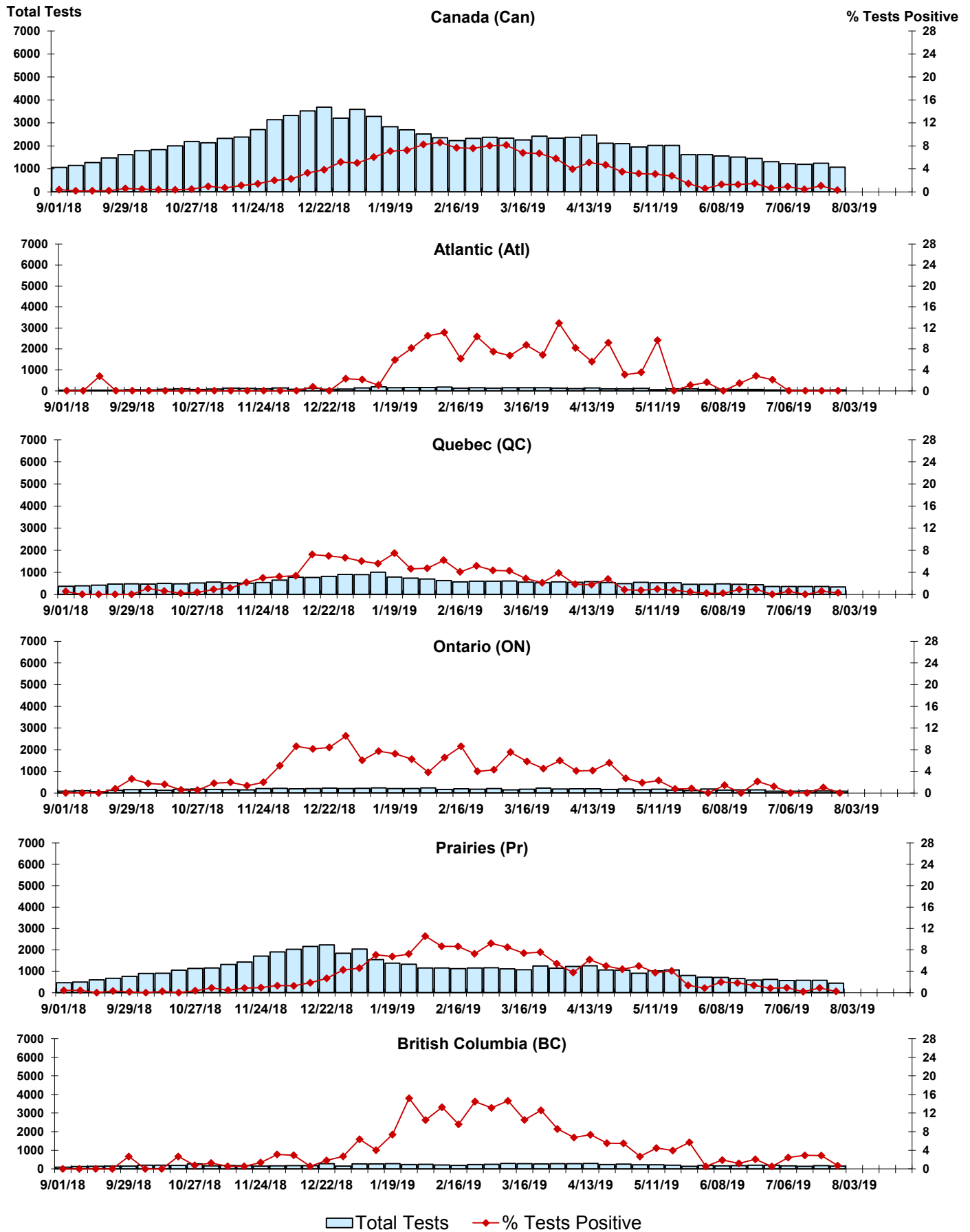


Figure 8: Positive Coronavirus (coron) Tests (%) in Canada by Region by Week of Report



Abbreviations:

A(H1N1)pdm09: Influenza A(H1N1)pdm09

A(H3): Influenza A(H3N2)

A (UnS): Influenza A (Unsubtyped)

Adeno: Adenovirus

CHEO: Children's Hospital of Eastern Ontario

Coron: Coronavirus

Entero: Enterovirus

hMPV: human metapneumovirus

HSC: Health Sciences Centre

N.A.: Not Applicable

P.H.L.: Public Health Laboratory

P.H.O.L.: Public Health Ontario Laboratory

PIV: Parainfluenza

Rhino: Rhinovirus

RSV: Respiratory syncytial virus

UHN: University Health Network

Notes:

Specimens from Yukon (YT), Northwest Territories (NT) and Nunavut (NU) are sent to reference laboratories in other provinces. Results reported for the Territories reflect the number of specimens that are identified as originating from YT, NT or NU.

Delays in the reporting of data may cause data to change retrospectively.

Due to reporting delays, the sum of weekly report totals do not add up to cumulative totals.