

Respiratory Virus Detections in Canada

Respiratory Virus Report, Week 33 - ending August 17, 2019

The Respiratory Virus Detection Surveillance System collects data from select laboratories across Canada on the number of tests performed and the number of tests positive for influenza and other respiratory viruses. Data are reported on a weekly basis year-round to the Centre for Immunization and Respiratory Infectious Diseases (CIRID), Public Health Agency of Canada. These data are also summarized in the weekly FluWatch report.

Table 1: Respiratory Virus Detections/Isolations for the week ending August 17, 2019 (Reporting Week 201933)

| Reporting Laboratory | Flu Tested | A(H1N1)pdm09 Positive | A(H3) Positive | A(UnS) Positive | Total Flu A Positive | Total Flu B Positive | RSV Tested | RSV Positive | PIV Tested | PIV 1 Positive | PIV 2 Positive | PIV 3 Positive | PIV 4 Positive | Other PIV Positive | Adeno Tested | Adeno Positive | hMPV Tested | hMPV Positive | Entero/Rhino Tested | Entero/Rhino Positive | Coron Tested | Coron Positive |
|----------------------------------|-------------|-----------------------|----------------|-----------------|----------------------|----------------------|-------------|--------------|-------------|----------------|----------------|----------------|----------------|--------------------|--------------|----------------|-------------|---------------|---------------------|-----------------------|--------------|----------------|
| Newfoundland | 25 | 0 | 0 | 0 | 0 | 0 | 25 | 0 | 25 | 0 | 0 | 0 | 0 | 0 | 25 | 0 | 25 | 1 | 25 | 4 | N.A. | N.A. |
| Prince Edward Island | 2 | 0 | 0 | 0 | 0 | 0 | 2 | 0 | 0 | 0 | 0 | 0 | 0 | 0 | 0 | 0 | 0 | 0 | 0 | 0 | 0 | 0 |
| Nova Scotia | 16 | 0 | 0 | 0 | 0 | 0 | 16 | 0 | 5 | 0 | 0 | 0 | 0 | 0 | 5 | 0 | 5 | 0 | 5 | 0 | 5 | 0 |
| New Brunswick | 64 | 0 | 0 | 0 | 0 | 0 | 64 | 0 | 28 | 0 | 0 | 1 | 0 | 0 | 28 | 3 | 28 | 0 | 28 | 8 | 28 | 1 |
| Atlantic | 107 | 0 | 0 | 0 | 0 | 0 | 107 | 0 | 58 | 0 | 0 | 1 | 0 | 0 | 58 | 3 | 58 | 1 | 58 | 12 | 33 | 1 |
| Région Nord-Est | 16 | 0 | 0 | 0 | 0 | 0 | 13 | 0 | 0 | 0 | 0 | 0 | 0 | 0 | 0 | 0 | 0 | 0 | N.A. | N.A. | 0 | 0 |
| Québec-Chaudière-Appalaches | 25 | 0 | 0 | 0 | 0 | 0 | 30 | 0 | 40 | 0 | 0 | 0 | 0 | 0 | 43 | 1 | 0 | 0 | N.A. | N.A. | 37 | 0 |
| Centre-du-Québec | 18 | 0 | 0 | 0 | 0 | 0 | 18 | 0 | 0 | 0 | 0 | 0 | 0 | 0 | 0 | 0 | 0 | 0 | N.A. | N.A. | 0 | 0 |
| Montréal-Laval | 380 | 0 | 0 | 2 | 2 | 2 | 390 | 1 | 341 | 3 | 0 | 0 | 0 | 0 | 341 | 19 | 0 | 0 | N.A. | N.A. | 334 | 0 |
| Ouest du Québec | 14 | 0 | 0 | 0 | 0 | 0 | 14 | 0 | 0 | 0 | 0 | 0 | 0 | 0 | 0 | 0 | 0 | 0 | N.A. | N.A. | 0 | 0 |
| Montréal | 19 | 0 | 0 | 0 | 0 | 0 | 19 | 0 | 0 | 0 | 0 | 0 | 0 | 0 | 0 | 0 | 0 | 0 | N.A. | N.A. | 0 | 0 |
| Province of Québec | 472 | 0 | 0 | 2 | 2 | 2 | 484 | 1 | 381 | 3 | 0 | 0 | 0 | 0 | 384 | 20 | 0 | 0 | N.A. | N.A. | 371 | 0 |
| Ottawa P.H.L. | 6 | 0 | 0 | 0 | 0 | 0 | 6 | 0 | 6 | 0 | 0 | 0 | 0 | 0 | 6 | 0 | 5 | 0 | 1 | 0 | 0 | 0 |
| CHEO - Ottawa | 65 | 0 | 0 | 1 | 1 | 0 | 65 | 0 | 17 | 0 | 0 | 0 | 0 | 0 | 17 | 0 | 17 | 0 | 17 | 2 | 16 | 0 |
| Kingston P.H.L. | 11 | 0 | 0 | 0 | 0 | 0 | 11 | 0 | 8 | 0 | 0 | 0 | 0 | 0 | 8 | 0 | 5 | 0 | 3 | 0 | 0 | 0 |
| UHN / Mount Sinai Hospital | 137 | 0 | 0 | 2 | 2 | 0 | 137 | 2 | 14 | 0 | 1 | 0 | 0 | 0 | 0 | 0 | 14 | 0 | N.A. | N.A. | N.A. | N.A. |
| P.H.O.L. - Toronto | 147 | 0 | 0 | 0 | 0 | 0 | 147 | 1 | 146 | 1 | 0 | 3 | 0 | 0 | 146 | 0 | 135 | 0 | 11 | 0 | 0 | 0 |
| Sick Kids Hospital - Toronto | 54 | 0 | 0 | 0 | 0 | 0 | 54 | 1 | 54 | 0 | 0 | 1 | 0 | 0 | 54 | 1 | 54 | 0 | 54 | 10 | 54 | 0 |
| Sunnybrook & Women's College HSC | 0 | 0 | 0 | 0 | 0 | 0 | 0 | 0 | 0 | 0 | 0 | 0 | 0 | 0 | 0 | 0 | 0 | 0 | 0 | 0 | 0 | 0 |
| Sault Ste. Marie P.H.L. | 3 | 0 | 0 | 0 | 0 | 0 | 3 | 0 | 2 | 0 | 0 | 0 | 0 | 0 | 2 | 0 | 2 | 0 | 0 | 0 | 0 | 0 |
| Timmins P.H.L. | 1 | 0 | 0 | 0 | 0 | 0 | 1 | 0 | 1 | 0 | 0 | 0 | 0 | 0 | 1 | 0 | 1 | 0 | 0 | 0 | 0 | 0 |
| St. Joseph's - London | 0 | 0 | 0 | 0 | 0 | 0 | 0 | 0 | 0 | 0 | 0 | 0 | 0 | 0 | 0 | 0 | 0 | 0 | 0 | 0 | 0 | 0 |
| London P.H.L. | 27 | 0 | 0 | 0 | 0 | 0 | 27 | 0 | 27 | 0 | 0 | 0 | 0 | 0 | 27 | 0 | 26 | 0 | 1 | 0 | 0 | 0 |
| Orillia P.H.L. | 6 | 0 | 0 | 0 | 0 | 0 | 6 | 0 | 4 | 0 | 0 | 0 | 0 | 0 | 4 | 0 | 4 | 0 | 0 | 0 | 0 | 0 |
| Thunder Bay P.H.L. | 1 | 0 | 0 | 0 | 0 | 0 | 1 | 0 | 1 | 0 | 0 | 0 | 0 | 0 | 1 | 0 | 1 | 0 | 0 | 0 | 0 | 0 |
| Sudbury P.H.L. | 5 | 0 | 0 | 0 | 0 | 0 | 5 | 0 | 4 | 0 | 0 | 0 | 0 | 0 | 4 | 0 | 4 | 0 | 0 | 0 | 0 | 0 |
| Hamilton P.H.L. | 22 | 0 | 0 | 0 | 0 | 1 | 22 | 0 | 22 | 0 | 0 | 0 | 0 | 0 | 22 | 0 | 22 | 0 | 0 | 0 | 0 | 0 |
| Peterborough P.H.L. | 20 | 0 | 0 | 0 | 0 | 0 | 20 | 0 | 20 | 1 | 0 | 0 | 0 | 0 | 20 | 0 | 20 | 0 | 0 | 0 | 0 | 0 |
| Province of Ontario | 505 | 0 | 0 | 3 | 3 | 1 | 505 | 4 | 326 | 2 | 0 | 5 | 0 | 0 | 312 | 1 | 310 | 0 | 87 | 12 | 70 | 0 |
| Manitoba | 122 | 0 | 0 | 1 | 1 | 0 | 122 | 0 | 90 | 3 | 0 | 2 | 0 | 0 | 90 | 1 | 37 | 0 | 90 | 11 | 37 | 0 |
| Regina | 170 | 0 | 0 | 1 | 1 | 0 | 170 | 0 | 109 | 0 | 0 | 0 | 0 | 0 | 109 | 3 | 109 | 1 | 109 | 33 | 109 | 0 |
| Saskatoon | 52 | 0 | 0 | 1 | 1 | 0 | 52 | 0 | 52 | 0 | 0 | 0 | 0 | 0 | 52 | 1 | 52 | 1 | 52 | 10 | 52 | 0 |
| Province of Saskatchewan | 222 | 0 | 0 | 2 | 2 | 0 | 222 | 0 | 161 | 0 | 0 | 0 | 0 | 0 | 161 | 4 | 161 | 2 | 161 | 43 | 161 | 0 |
| Province of Alberta | 361 | 0 | 0 | 0 | 0 | 0 | 331 | 0 | 331 | 3 | 0 | 1 | 0 | 0 | 331 | 2 | 331 | 3 | 331 | 69 | 331 | 2 |
| Prairies | 705 | 0 | 0 | 3 | 3 | 0 | 675 | 0 | 582 | 6 | 0 | 3 | 0 | 0 | 582 | 7 | 529 | 5 | 582 | 123 | 529 | 2 |
| British Columbia | 182 | 0 | 4 | 1 | 5 | 2 | 182 | 1 | 155 | 2 | 1 | 1 | 1 | 0 | 155 | 2 | 155 | 0 | 152 | 32 | 152 | 0 |
| Yukon | 2 | 0 | 0 | 0 | 0 | 0 | 2 | 0 | N.A. | N.A. | N.A. | N.A. | N.A. | N.A. | N.A. | N.A. | N.A. | N.A. | N.A. | N.A. | N.A. | N.A. |
| Northwest Territories | 4 | 0 | 0 | 0 | 0 | 0 | 4 | 0 | 4 | 0 | 0 | 0 | 0 | 0 | 4 | 0 | 4 | 0 | 4 | 4 | 4 | 0 |
| Nunavut | 2 | 0 | 0 | 0 | 0 | 0 | 2 | 0 | 2 | 0 | 0 | 0 | 0 | 0 | 2 | 0 | 2 | 0 | 2 | 1 | 2 | 0 |
| Territories | 8 | 0 | 0 | 0 | 0 | 0 | 8 | 0 | 6 | 0 | 0 | 0 | 0 | 0 | 6 | 0 | 6 | 0 | 6 | 5 | 6 | 0 |
| CANADA | 1979 | 0 | 4 | 9 | 13 | 5 | 1961 | 6 | 1508 | 13 | 1 | 10 | 1 | 0 | 1497 | 33 | 1058 | 6 | 885 | 184 | 1161 | 3 |

Specimens from Yukon (YT), Northwest Territories (NT) and Nunavut (NU) are sent to reference laboratories in other provinces and reported results reflect specimens identified as originating from YT, NT or NU.

Results from British Columbia comprise of specimens from the following sites: BC Children's and Women's Hospital, Powell River Hospital, St. Paul's Hospital, Vancouver General Hospital, Victoria General Hospital, Interior Health Authority sites and Northern Health Authority sites.

Delays in the reporting of data may cause data to change retrospectively.

Table 2: Respiratory Virus Detections/Isolations for the period August 26, 2018 - August 17, 2019 (Reporting Weeks 201835-201933)

| Reporting Laboratory | Flu Tested | A(H1N1)pdm09 Positive | A(H3) Positive | A(UnS) Positive | Total Flu A Positive | Total Flu B Positive | RSV Tested | RSV Positive | PIV Tested | PIV 1 Positive | PIV 2 Positive | PIV 3 Positive | PIV 4 Positive | Other PIV Positive | Adeno Tested | Adeno Positive | hMPV Tested | hMPV Positive | Entero/Rhino Tested | Entero/Rhino Positive | Coron Tested | Coron Positive |
|----------------------------------|---------------|-----------------------|----------------|-----------------|----------------------|----------------------|---------------|--------------|---------------|----------------|----------------|----------------|----------------|--------------------|---------------|----------------|---------------|---------------|---------------------|-----------------------|---------------|----------------|
| Newfoundland | 5560 | 1 | 0 | 1035 | 1036 | 13 | 5560 | 490 | 5560 | 11 | 59 | 202 | 0 | 0 | 5560 | 52 | 5560 | 230 | 5560 | 387 | N.A. | N.A. |
| Prince Edward Island | 1273 | 221 | 56 | 2 | 279 | 2 | 1271 | 140 | 91 | 1 | 0 | 2 | 3 | 0 | 86 | 6 | 86 | 3 | 86 | 22 | 86 | 4 |
| Nova Scotia | 4247 | 0 | 0 | 786 | 786 | 22 | 4258 | 408 | 641 | 1 | 4 | 39 | 3 | 0 | 641 | 3 | 641 | 11 | 641 | 80 | 641 | 11 |
| New Brunswick | 15321 | 246 | 39 | 2598 | 2883 | 366 | 15320 | 1237 | 4059 | 2 | 18 | 138 | 45 | 0 | 4059 | 145 | 4059 | 152 | 4059 | 463 | 4059 | 180 |
| Atlantic | 26401 | 468 | 95 | 4421 | 4984 | 403 | 26409 | 2275 | 10351 | 15 | 81 | 381 | 51 | 0 | 10346 | 206 | 10346 | 396 | 10346 | 952 | 4786 | 195 |
| Région Nord-Est | 9690 | 0 | 0 | 1585 | 1585 | 68 | 7645 | 704 | 0 | 0 | 0 | 0 | 0 | 0 | 0 | 0 | 0 | 0 | N.A. | N.A. | 0 | 0 |
| Québec-Chaudière-Appalaches | 16738 | 0 | 0 | 3144 | 3144 | 83 | 17060 | 1585 | 3790 | 10 | 34 | 106 | 12 | 0 | 3908 | 143 | 2888 | 50 | N.A. | N.A. | 3058 | 31 |
| Centre-du-Québec | 18986 | 0 | 0 | 3649 | 3649 | 225 | 15325 | 1592 | 0 | 0 | 0 | 0 | 0 | 0 | 36 | 0 | 0 | 0 | N.A. | N.A. | 0 | 0 |
| Montréal-Laval | 45990 | 0 | 0 | 4690 | 4690 | 375 | 44882 | 3024 | 25277 | 147 | 165 | 512 | 40 | 0 | 25277 | 736 | 22278 | 499 | N.A. | N.A. | 24725 | 739 |
| Ouest du Québec | 13370 | 0 | 0 | 2702 | 2702 | 181 | 12270 | 1408 | 0 | 0 | 0 | 0 | 0 | 0 | 0 | 0 | 0 | 0 | N.A. | N.A. | 0 | 0 |
| Montérégie | 9524 | 0 | 0 | 1395 | 1396 | 54 | 9112 | 681 | 0 | 0 | 0 | 0 | 0 | 0 | 0 | 0 | 0 | 0 | N.A. | N.A. | 0 | 0 |
| Province of Québec | 114298 | 0 | 0 | 17165 | 17166 | 986 | 106294 | 8994 | 29067 | 157 | 199 | 618 | 52 | 0 | 29221 | 879 | 25166 | 549 | N.A. | N.A. | 27783 | 770 |
| Ottawa P.H.L. | 1018 | 91 | 70 | 22 | 183 | 4 | 1013 | 88 | 612 | 0 | 3 | 8 | 0 | 0 | 612 | 1 | 572 | 9 | 46 | 0 | 0 | 0 |
| CHEO - Ottawa | 8996 | 0 | 0 | 864 | 864 | 50 | 8995 | 939 | 1088 | 6 | 13 | 29 | 6 | 0 | 1089 | 31 | 1088 | 18 | 1081 | 255 | 1056 | 41 |
| Kingston P.H.L. | 1062 | 67 | 71 | 12 | 150 | 16 | 1062 | 63 | 775 | 0 | 4 | 18 | 0 | 0 | 775 | 1 | 729 | 7 | 122 | 0 | 0 | 0 |
| UHN / Mount Sinai Hospital | 13725 | 6 | 15 | 764 | 785 | 62 | 13725 | 502 | 793 | 1 | 9 | 18 | 3 | 0 | 0 | 0 | 722 | 8 | N.A. | N.A. | N.A. | N.A. |
| P.H.O.L. - Toronto | 16240 | 897 | 720 | 98 | 1715 | 87 | 15799 | 544 | 13268 | 38 | 61 | 190 | 0 | 0 | 13269 | 75 | 12823 | 191 | 684 | 0 | 0 | 0 |
| Sick Kids Hospital - Toronto | 3261 | 115 | 47 | 123 | 285 | 40 | 2845 | 227 | 2845 | 37 | 37 | 77 | 27 | 0 | 2845 | 92 | 2845 | 122 | 2845 | 691 | 2845 | 138 |
| Sunnybrook & Women's College HSC | 2832 | 74 | 101 | 11 | 186 | 6 | 2832 | 62 | 2832 | 14 | 5 | 33 | 4 | 0 | 2832 | 1 | 2832 | 87 | 2832 | 231 | 2832 | 100 |
| Sault Ste. Marie P.H.L. | 457 | 47 | 42 | 3 | 92 | 0 | 389 | 18 | 358 | 0 | 3 | 2 | 0 | 0 | 358 | 0 | 348 | 5 | 16 | 0 | 0 | 0 |
| Timmins P.H.L. | 424 | 60 | 10 | 1 | 71 | 0 | 353 | 12 | 351 | 0 | 7 | 6 | 0 | 0 | 351 | 0 | 343 | 1 | 24 | 0 | 0 | 0 |
| St. Joseph's - London | 4896 | 3 | 1 | 530 | 534 | 6 | 4768 | 361 | 1811 | 8 | 6 | 43 | 15 | 0 | 1811 | 41 | 1780 | 56 | 1338 | 218 | 1087 | 21 |
| London P.H.L. | 4444 | 320 | 205 | 60 | 585 | 18 | 4406 | 333 | 3199 | 6 | 23 | 59 | 0 | 0 | 3199 | 20 | 3063 | 43 | 252 | 0 | 0 | 0 |
| Orillia P.H.L. | 1369 | 67 | 78 | 23 | 168 | 2 | 1369 | 128 | 1011 | 3 | 2 | 25 | 0 | 0 | 1011 | 1 | 994 | 19 | 49 | 0 | 0 | 0 |
| Thunder Bay P.H.L. | 478 | 32 | 45 | 8 | 85 | 0 | 384 | 18 | 371 | 1 | 1 | 15 | 0 | 0 | 370 | 7 | 351 | 9 | 31 | 0 | 0 | 0 |
| Sudbury P.H.L. | 983 | 48 | 22 | 0 | 70 | 0 | 921 | 33 | 892 | 5 | 4 | 10 | 0 | 0 | 892 | 3 | 834 | 13 | 89 | 0 | 0 | 0 |
| Hamilton P.H.L. | 4339 | 236 | 225 | 33 | 494 | 15 | 4240 | 136 | 3487 | 17 | 15 | 82 | 0 | 0 | 3487 | 25 | 3419 | 52 | 182 | 0 | 0 | 0 |
| Peterborough P.H.L. | 1328 | 44 | 78 | 22 | 144 | 3 | 1324 | 50 | 1078 | 6 | 4 | 14 | 0 | 0 | 1078 | 1 | 1055 | 12 | 27 | 0 | 0 | 0 |
| Province of Ontario | 65852 | 2107 | 1730 | 2574 | 6411 | 309 | 64425 | 3514 | 34771 | 142 | 197 | 629 | 55 | 0 | 33979 | 299 | 33798 | 652 | 9919 | 1416 | 8090 | 310 |
| Manitoba | 12040 | 335 | 131 | 728 | 1194 | 77 | 11413 | 634 | 5488 | 14 | 22 | 175 | 13 | 0 | 5488 | 64 | 3373 | 89 | 5488 | 701 | 3406 | 132 |
| Regina | 9607 | 1433 | 150 | 183 | 1766 | 88 | 9607 | 563 | 11089 | 4 | 65 | 240 | 38 | 0 | 9156 | 155 | 9156 | 184 | 9156 | 1700 | 9156 | 310 |
| Saskatoon | 7239 | 0 | 0 | 890 | 890 | 51 | 7239 | 446 | 7239 | 6 | 7 | 56 | 15 | 48 | 7239 | 74 | 7239 | 155 | 7239 | 617 | 7239 | 103 |
| Province of Saskatchewan | 16846 | 1433 | 150 | 1073 | 2656 | 139 | 16846 | 1009 | 18328 | 10 | 72 | 296 | 53 | 48 | 16395 | 229 | 16395 | 339 | 16395 | 2317 | 16395 | 413 |
| Province of Alberta | 42394 | 3647 | 1390 | 2225 | 7262 | 369 | 35061 | 0 | 35061 | 103 | 251 | 1109 | 260 | 0 | 35061 | 518 | 35061 | 1003 | 35061 | 5479 | 35061 | 1391 |
| Prairies | 71280 | 5415 | 1671 | 4026 | 11112 | 585 | 63320 | 1643 | 58877 | 127 | 345 | 1580 | 326 | 48 | 56944 | 811 | 54829 | 1431 | 56944 | 8497 | 54862 | 1936 |
| British Columbia | 28791 | 3165 | 1684 | 1625 | 6474 | 244 | 28754 | 1587 | 13263 | 35 | 83 | 517 | 119 | 0 | 13212 | 184 | 13213 | 79 | 10303 | 2079 | 10303 | 514 |
| Yukon | 423 | 66 | 33 | 39 | 138 | 0 | 423 | 18 | N.A. | N.A. | N.A. | N.A. | N.A. | N.A. | N.A. | N.A. | N.A. | N.A. | N.A. | N.A. | N.A. | N.A. |
| Northwest Territories | 827 | 175 | 6 | 0 | 181 | 3 | 822 | 0 | 822 | 6 | 0 | 32 | 4 | 0 | 822 | 27 | 822 | 11 | 822 | 150 | 822 | 47 |
| Nunavut | 130 | 20 | 0 | 0 | 20 | 0 | 130 | 0 | 130 | 4 | 1 | 4 | 0 | 0 | 130 | 18 | 129 | 0 | 130 | 39 | 129 | 9 |
| Territories | 1380 | 261 | 39 | 39 | 339 | 3 | 1375 | 18 | 952 | 10 | 1 | 36 | 4 | 0 | 952 | 45 | 951 | 11 | 952 | 189 | 951 | 56 |
| CANADA | 308002 | 11416 | 5219 | 29850 | 46486 | 2530 | 290577 | 18031 | 147281 | 486 | 906 | 3761 | 607 | 48 | 144654 | 2424 | 138303 | 3118 | 88464 | 13133 | 106775 | 3781 |

Specimens from YT, NT and NU are sent to reference laboratories in other provinces and reported results reflect specimens identified as originating from YT, NT or NU.

Results from British Columbia comprise of specimens from the following sites: BC Children's and Women's Hospital, Powell River Hospital, St. Paul's Hospital, Vancouver General Hospital, Victoria General Hospital, Interior Health Authority sites and Northern Health Authority sites.

Delays in the reporting of data may cause data to change retrospectively.

Due to reporting delays, the sum of weekly report totals do not add up to cumulative totals.

Figure 1: Number positive laboratory tests for other respiratory viruses by report week, Canada, 2018-19

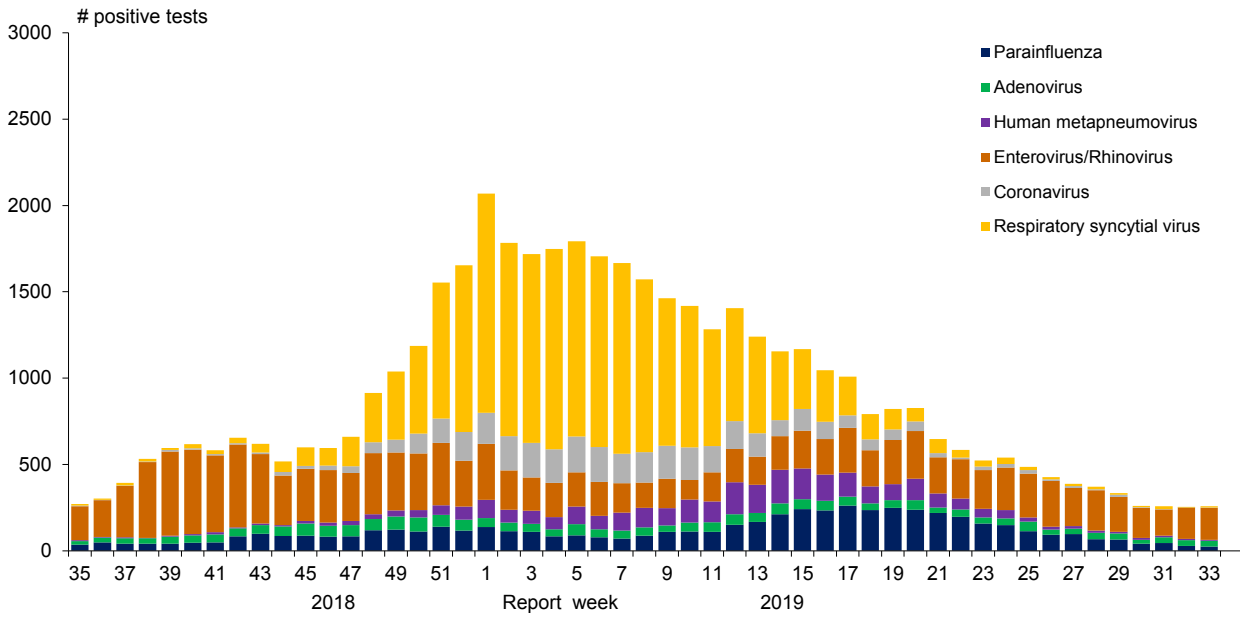


Figure 2: Positive Influenza Tests (%) in Canada by Region by Week of Report

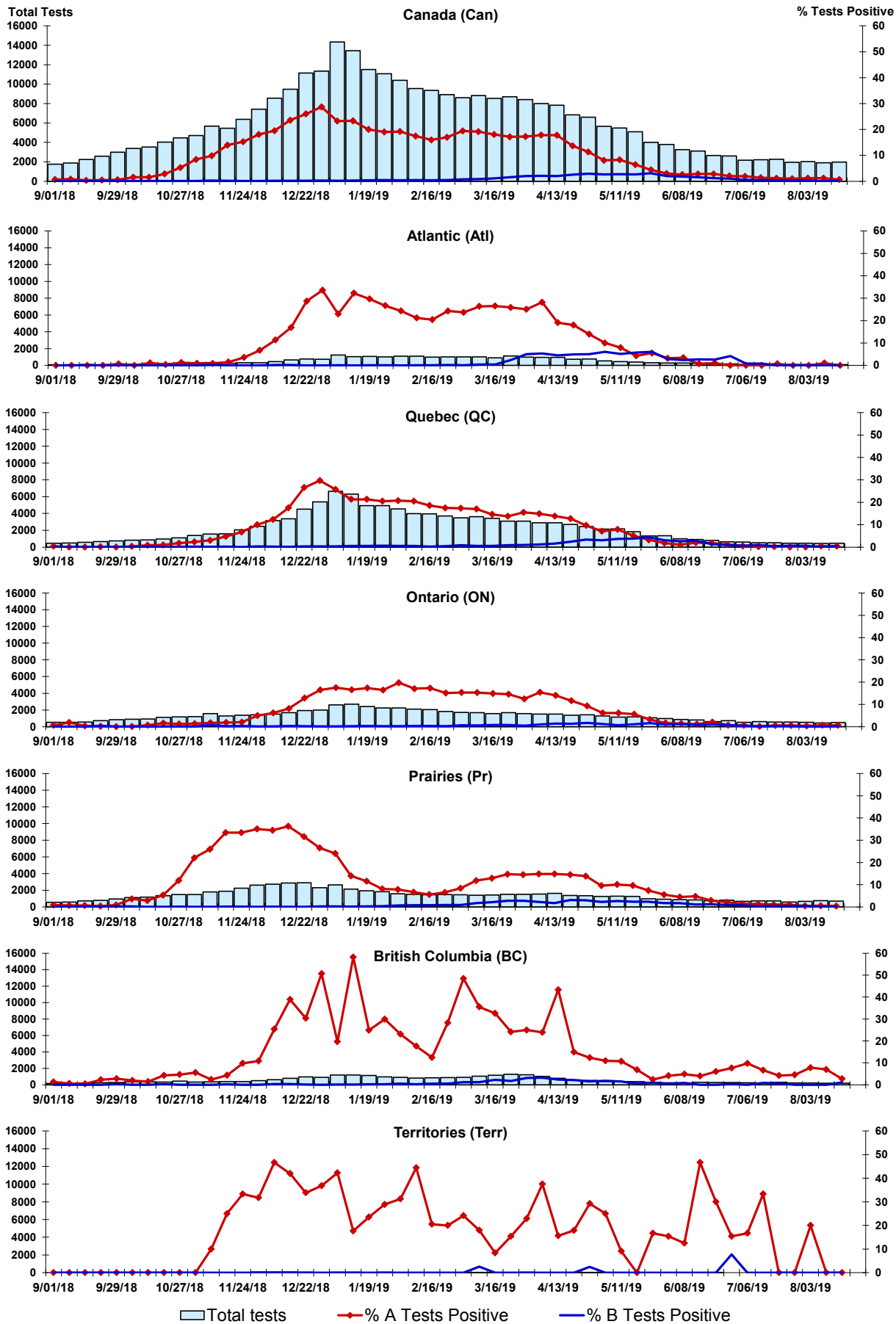


Figure 3: Positive Respiratory syncytial virus (RSV) Tests (%) in Canada by Region by Week of Report

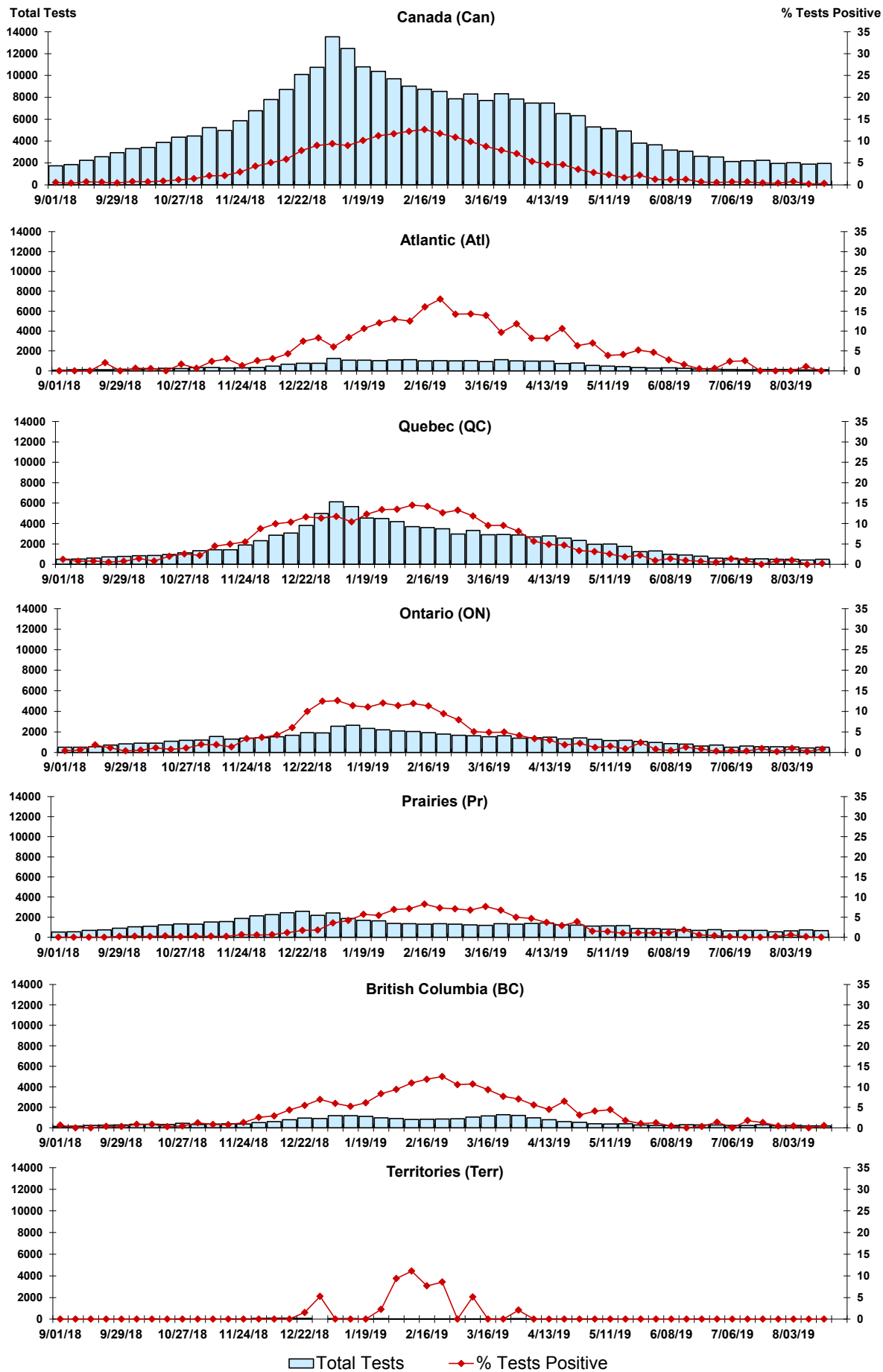


Figure 4: Positive Parainfluenza (PIV) Tests (%) in Canada by Region by Week of Report

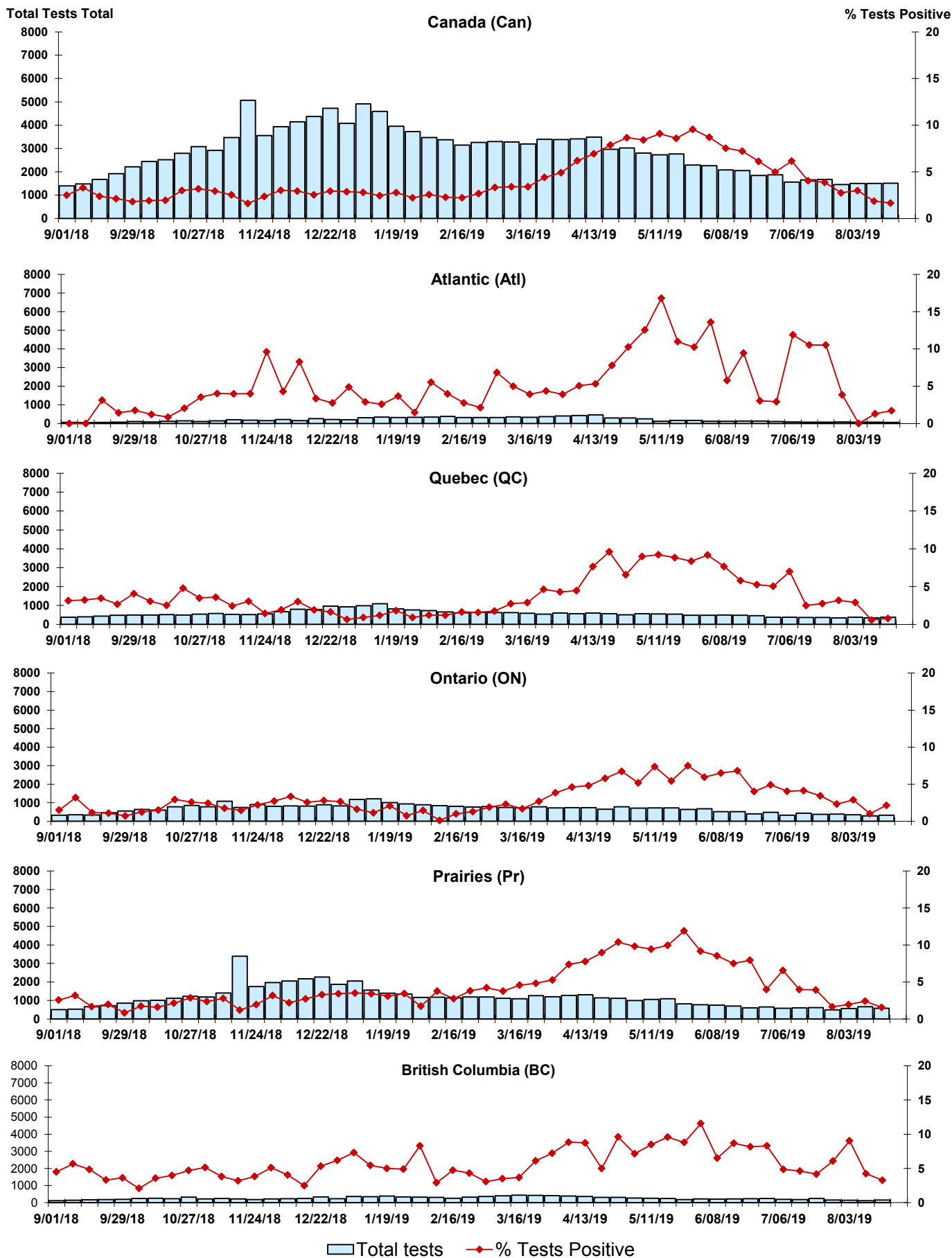


Figure 5: Positive Adenovirus (adeno) Tests (%) in Canada by Region by Week of Report

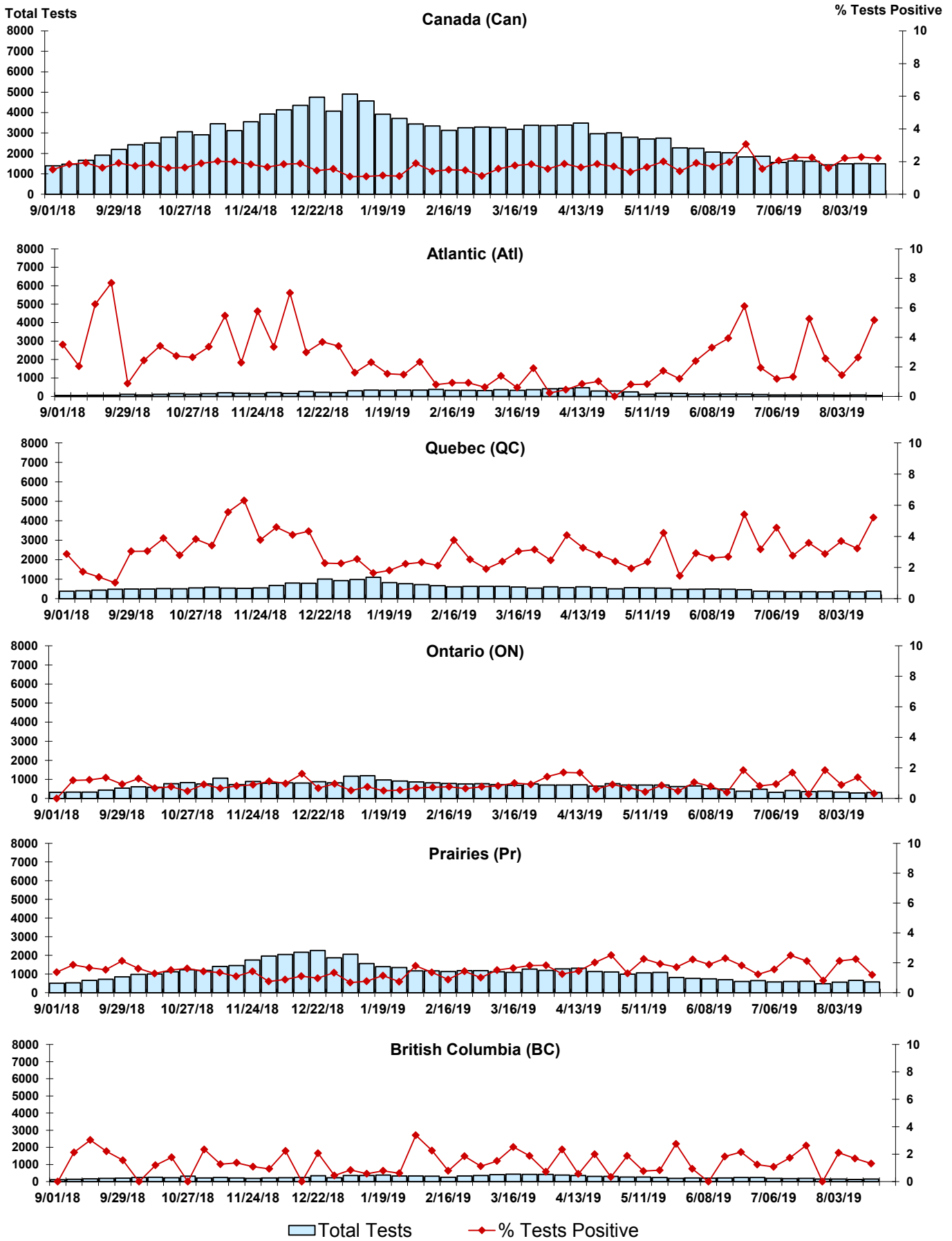
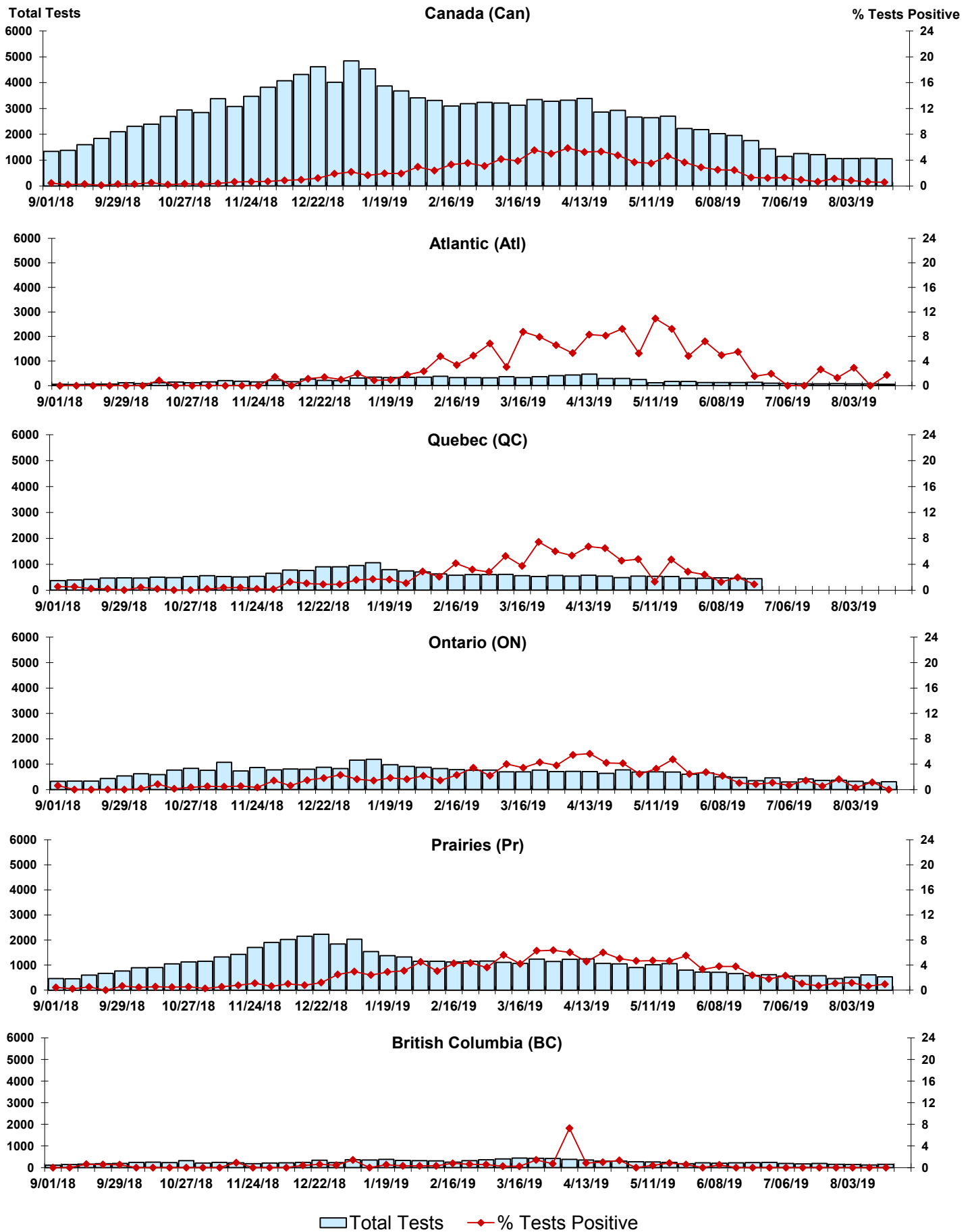


Figure 6: Positive human metapneumovirus (hMPV) Tests (%) in Canada by Region by Week of Report



Legend: Total Tests (light blue bar), % Tests Positive (red line with diamond)

Figure 7: Positive Enterovirus/Rhinovirus (entero/rhino) Tests (%) in Canada by Region by Week of Report

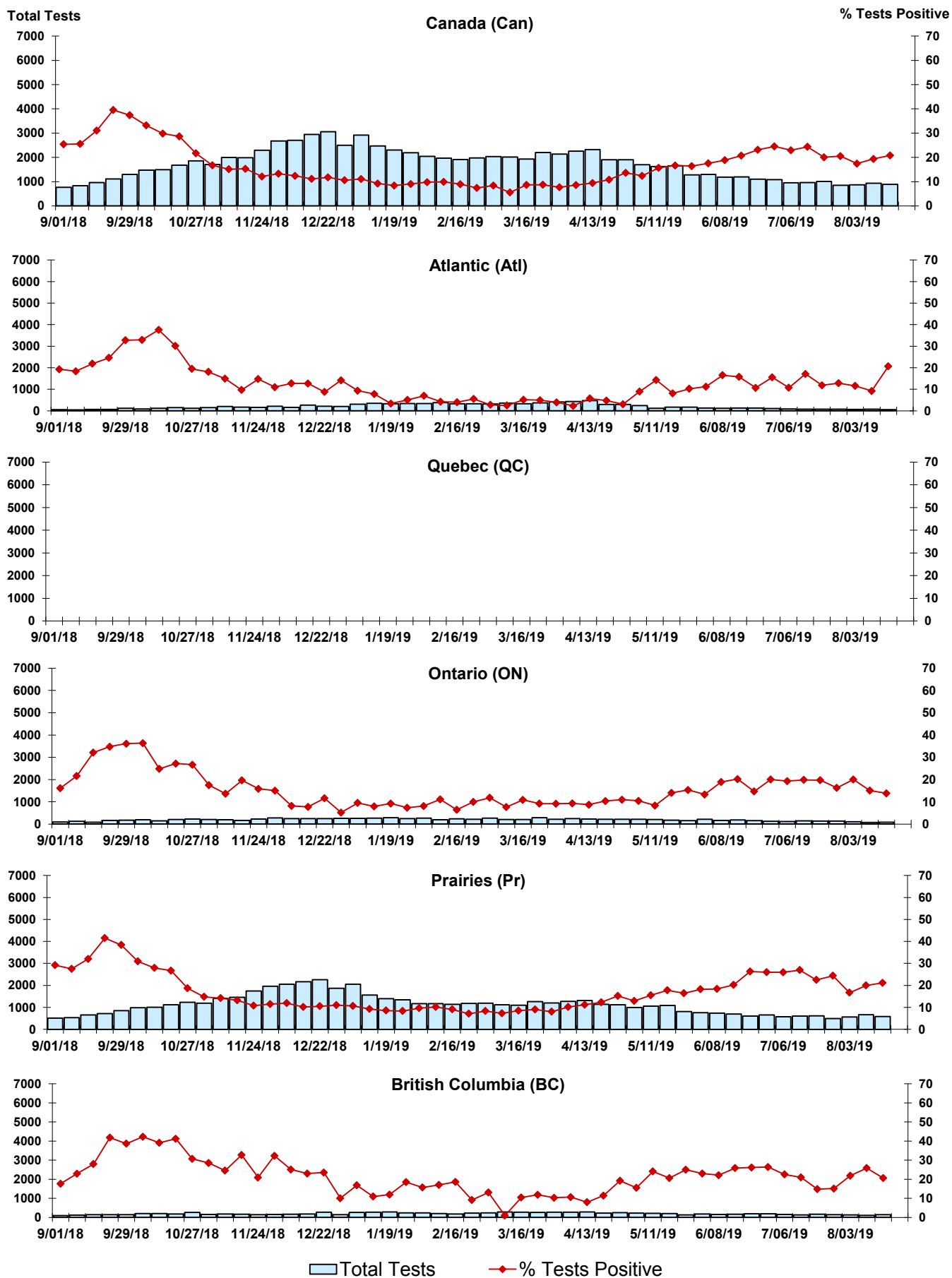
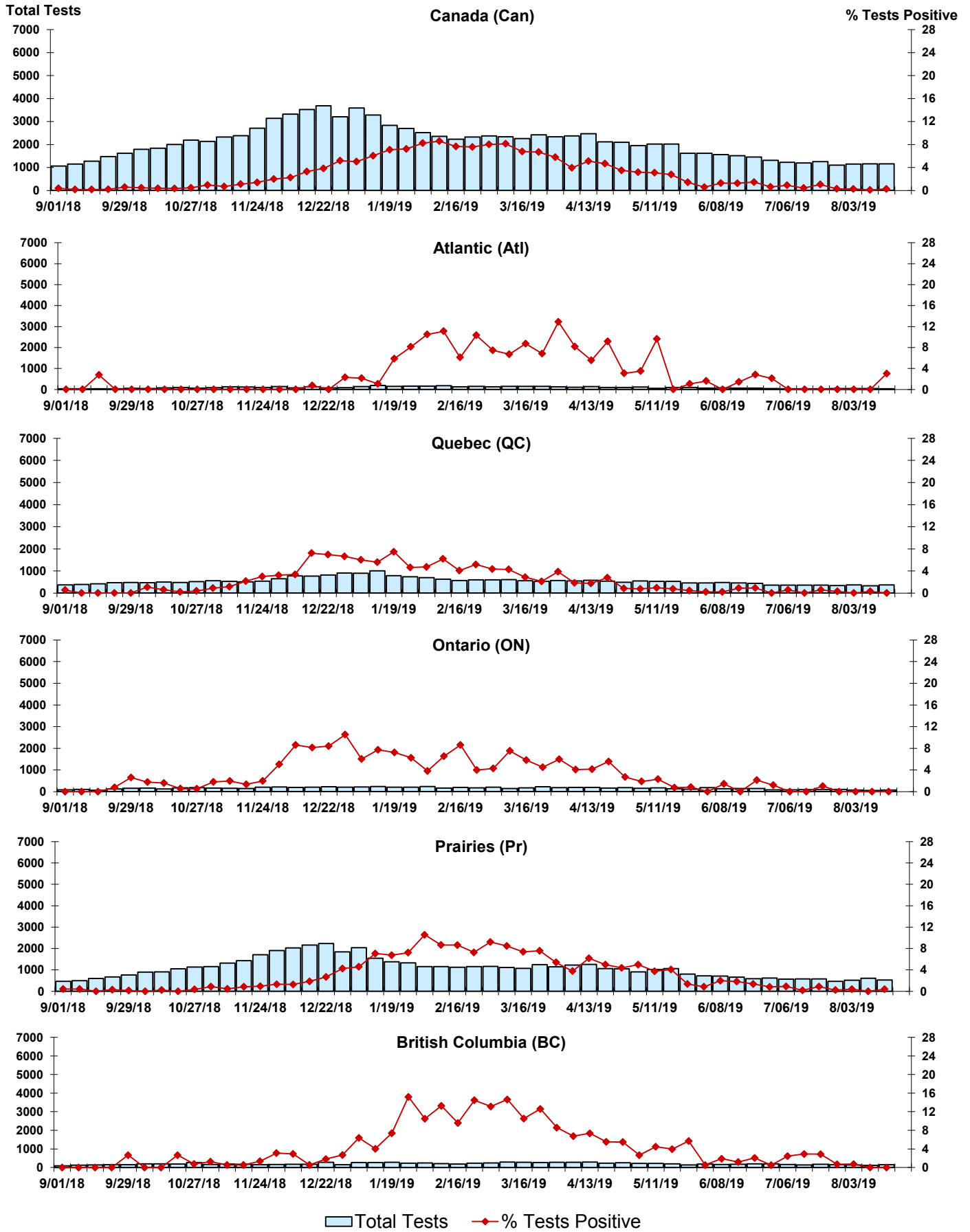


Figure 8: Positive Coronavirus (coron) Tests (%) in Canada by Region by Week of Report



Abbreviations:

A(H1N1)pdm09: Influenza A(H1N1)pdm09

A(H3): Influenza A(H3N2)

A (UnS): Influenza A (Unsubtyped)

Adeno: Adenovirus

CHEO: Children's Hospital of Eastern Ontario

Coron: Coronavirus

Entero: Enterovirus

hMPV: human metapneumovirus

HSC: Health Sciences Centre

N.A.: Not Applicable

P.H.L.: Public Health Laboratory

P.H.O.L.: Public Health Ontario Laboratory

PIV: Parainfluenza

Rhino: Rhinovirus

RSV: Respiratory syncytial virus

UHN: University Health Network

Notes:

Specimens from Yukon (YT), Northwest Territories (NT) and Nunavut (NU) are sent to reference laboratories in other provinces. Results reported for the Territories reflect the number of specimens that are identified as originating from YT, NT or NU.

Delays in the reporting of data may cause data to change retrospectively.

Due to reporting delays, the sum of weekly report totals do not add up to cumulative totals.