

Respiratory Virus Detections in Canada

Respiratory Virus Report, Week 04 - ending January 26, 2019

The Respiratory Virus Detection Surveillance System collects data from select laboratories across Canada on the number of tests performed and the number of tests positive for influenza and other respiratory viruses. Data are reported on a weekly basis year-round to the Centre for Immunization and Respiratory Infectious Diseases (CIRID), Public Health Agency of Canada. These data are also summarized in the weekly FluWatch report.

Table 1: Respiratory Virus Detections/Isolations for the week ending January 26, 2019 (Reporting Week 201904)

Reporting Laboratory	Flu Tested	A(H1N1)pdm09 Positive	A(H3) Positive	A(UnS) Positive	Total Flu A Positive	Total Flu B Positive	RSV Tested	RSV Positive	PIV Tested	PIV 1 Positive	PIV 2 Positive	PIV 3 Positive	PIV 4 Positive	Other PIV Positive	Adeno Tested	Adeno Positive	hMPV Tested	hMPV Positive	Entero/Rhino Tested	Entero/Rhino Positive	Coron Tested	Coron Positive
Newfoundland	177	0	0	26	26	0	177	18	177	0	2	0	0	0	177	3	177	2	177	10	N.A.	N.A.
Prince Edward Island	103	41	0	0	41	0	103	6	0	0	0	0	0	0	0	0	0	0	0	0	0	0
Nova Scotia	143	0	0	27	27	1	143	21	10	0	0	0	0	0	10	0	10	0	10	1	10	0
New Brunswick	611	20	4	157	181	0	611	79	150	0	1	2	0	0	150	2	150	4	150	6	150	13
Atlantic	1034	61	4	210	275	1	1034	124	337	0	3	2	0	0	337	5	337	6	337	17	160	13
Région Nord-Est	378	0	0	70	70	0	282	36	0	0	0	0	0	0	0	0	0	0	N.A.	N.A.	0	0
Québec-Chaudière-Appalaches	796	0	0	180	180	0	836	122	89	0	0	0	0	0	91	5	78	1	N.A.	N.A.	74	2
Centre-du-Québec	949	0	0	210	210	19	730	115	0	0	0	0	0	0	0	0	0	0	N.A.	N.A.	0	0
Montréal-Laval	1645	0	0	238	238	11	1552	185	673	1	1	5	0	0	673	12	662	7	N.A.	N.A.	662	32
Ouest du Québec	772	0	0	228	228	1	687	103	0	0	0	0	0	0	0	0	0	0	N.A.	N.A.	0	0
Montérégie	397	0	0	85	85	1	397	40	0	0	0	0	0	0	0	0	0	0	N.A.	N.A.	0	0
Province of Québec	4937	0	0	1011	1011	32	4484	601	762	1	1	5	0	0	764	17	740	8	N.A.	N.A.	736	34
Ottawa P.H.L.	50	8	2	3	13	0	50	12	9	0	0	0	0	0	9	0	9	0	0	0	0	0
CHEO - Ottawa	348	0	0	65	65	1	348	73	26	0	0	0	0	0	26	0	26	0	26	1	26	1
Kingston P.H.L.	35	10	0	2	12	0	35	2	9	0	0	0	0	0	9	0	8	0	1	0	0	0
UHN / Mount Sinai Hospital	489	1	1	46	48	3	489	36	23	0	0	0	0	0	0	0	23	0	N.A.	N.A.	N.A.	N.A.
P.H.O.L. - Toronto	462	63	27	5	95	1	442	36	284	0	0	2	0	0	284	0	276	3	8	0	0	0
Sick Kids Hospital - Toronto	0	0	0	0	0	0	68	17	68	0	0	1	0	0	68	4	68	3	68	10	68	6
Sunnybrook & Women's College HSC	86	1	3	2	6	0	86	2	86	0	0	0	0	0	86	0	86	1	86	5	86	6
Sault Ste. Marie P.H.L.	16	2	0	0	2	0	14	1	13	0	0	0	0	0	13	0	13	0	0	0	0	0
Timmins P.H.L.	6	2	0	0	2	0	4	0	4	0	0	0	0	0	4	0	4	0	0	0	0	0
St. Joseph's - London	210	0	0	31	31	0	210	22	62	0	0	0	0	0	62	0	62	1	28	2	28	0
London P.H.L.	175	19	8	6	33	0	175	31	91	0	0	1	0	0	91	0	85	0	6	0	0	0
Orillia P.H.L.	66	2	1	0	3	1	66	17	31	0	0	0	0	0	31	0	30	2	1	0	0	0
Thunder Bay P.H.L.	20	3	0	0	3	0	13	1	13	0	0	0	0	0	13	0	13	1	0	0	0	0
Sudbury P.H.L.	44	5	1	0	6	0	38	3	36	0	0	0	0	0	36	0	36	2	0	0	0	0
Hamilton P.H.L.	129	19	6	1	26	0	127	10	95	0	0	0	0	0	95	1	95	1	0	0	0	0
Peterborough P.H.L.	36	4	2	5	11	0	34	1	19	0	1	0	0	0	19	0	19	0	0	0	0	0
Province of Ontario	2172	139	51	166	356	6	2199	264	869	0	1	4	0	0	846	5	853	14	224	18	208	13
Manitoba	384	10	20	0	30	0	379	29	86	0	0	1	1	0	86	0	73	8	86	5	73	2
Regina	174	18	1	2	21	0	174	27	174	1	0	4	1	0	174	1	174	6	174	24	174	14
Saskatoon	214	0	0	13	13	3	214	33	214	0	0	0	1	0	214	0	214	2	214	1	214	2
Province of Saskatchewan	388	18	1	15	34	3	388	60	388	1	0	4	2	0	388	1	388	8	388	25	388	16
Province of Alberta	991	44	10	20	74	4	819	0	819	1	11	17	4	0	819	7	819	21	819	80	819	72
Prairies	1763	72	31	35	138	7	1586	89	1293	2	11	22	7	0	1293	8	1280	37	1293	110	1280	90
British Columbia	972	218	22	87	327	2	972	81	307	0	1	13	2	0	307	2	307	1	217	43	217	33
Yukon	17	10	0	1	11	0	17	1	N.A.	N.A.	N.A.	N.A.	N.A.	N.A.	N.A.	N.A.	N.A.	N.A.	N.A.	N.A.	N.A.	N.A.
Northwest Territories	19	1	0	0	1	0	18	0	18	0	0	2	0	0	18	1	18	0	18	3	18	3
Nunavut	5	0	0	0	0	0	5	0	5	0	0	0	0	0	5	0	5	0	5	3	5	0
Territories	41	11	0	1	12	0	40	1	23	0	0	2	0	0	23	1	23	0	23	6	23	3
CANADA	10919	501	108	1510	2119	48	10315	1160	3591	3	17	48	9	0	3570	38	3540	66	2094	194	2624	186

Specimens from Yukon (YT), Northwest Territories (NT) and Nunavut (NU) are sent to reference laboratories in other provinces and reported results reflect specimens identified as originating from YT, NT or NU.

Results from British Columbia comprise of specimens from the following sites: BC Children's and Women's Hospital, Powell River Hospital, St. Paul's Hospital, Vancouver General Hospital, Victoria General Hospital, Interior Health Authority sites and Northern Health Authority sites.

Delays in the reporting of data may cause data to change retrospectively.

Table 2: Respiratory Virus Detections/Isolations for the period August 26, 2018 - January 26, 2019 (Reporting Weeks 201835-201904)

Reporting Laboratory	Flu Tested	A(H1N1)pdm09 Positive	A(H3) Positive	A(UnS) Positive	Total Flu A Positive	Total Flu B Positive	RSV Tested	RSV Positive	PIV Tested	PIV 1 Positive	PIV 2 Positive	PIV 3 Positive	PIV 4 Positive	Other PIV Positive	Adeno Tested	Adeno Positive	hMPV Tested	hMPV Positive	Entero/Rhino Tested	Entero/Rhino Positive	Coron Tested	Coron Positive
Newfoundland	1807	1	0	212	213	1	1807	143	1807	0	16	43	0	0	1807	17	1807	11	1807	223	N.A.	N.A.
Prince Edward Island	530	131	0	0	131	0	528	17	58	0	0	1	3	0	53	5	53	0	53	21	53	0
Nova Scotia	1278	0	0	129	129	3	1284	94	349	0	3	9	1	0	349	0	349	3	349	54	349	3
New Brunswick	6278	113	10	1297	1420	2	6281	344	1656	0	15	8	33	0	1656	97	1656	16	1656	232	1656	28
Atlantic	9893	245	10	1638	1893	6	9900	598	3870	0	34	61	37	0	3865	119	3865	30	3865	530	2058	31
Région Nord-Est	4692	0	0	949	949	3	3488	121	0	0	0	0	0	0	0	0	0	0	N.A.	N.A.	0	0
Québec-Chaudière-Appalaches	7473	0	0	1672	1672	12	7652	780	1622	4	29	9	7	0	1677	67	1376	5	N.A.	N.A.	1229	6
Centre-du-Québec	8693	0	0	2045	2045	96	7053	659	0	0	0	0	0	0	36	0	0	0	N.A.	N.A.	0	0
Montréal-Laval	22252	0	0	2478	2478	40	21493	1872	12636	46	144	46	35	0	12636	368	12376	99	N.A.	N.A.	12325	467
Ouest du Québec	7147	0	0	1536	1536	13	6444	847	0	0	0	0	0	0	0	0	0	0	N.A.	N.A.	0	0
Montérégie	4676	0	0	779	780	8	4663	357	0	0	0	0	0	0	0	0	0	0	N.A.	N.A.	0	0
Province of Québec	54933	0	0	9459	9460	172	50793	4636	14258	50	173	55	42	0	14349	435	13752	104	N.A.	N.A.	13554	473
Ottawa P.H.L.	521	56	14	11	81	0	516	40	311	0	2	3	0	0	311	0	295	1	18	0	0	0
CHEO - Ottawa	4128	0	0	324	324	10	4128	478	515	0	7	4	5	0	515	16	514	6	507	142	508	20
Kingston P.H.L.	514	32	15	3	50	0	514	30	395	0	3	2	0	0	395	0	380	1	54	0	0	0
UHN / Mount Sinai Hospital	6418	4	7	396	407	15	6418	310	333	0	8	0	2	0	0	0	309	2	N.A.	N.A.	N.A.	N.A.
P.H.O.L. - Toronto	8218	607	215	51	873	25	7978	292	6598	12	55	23	0	0	6599	27	6429	34	295	0	0	0
Sick Kids Hospital - Toronto	1348	74	4	27	105	1	1337	182	1337	8	34	19	21	0	1337	48	1337	36	1337	348	1337	89
Sunnybrook & Women's College HSC	1406	59	24	8	91	0	1406	39	1406	4	5	5	1	0	1406	1	1406	18	1406	132	1406	51
Sault Ste. Marie P.H.L.	177	10	1	0	11	0	170	5	163	0	0	0	0	0	163	0	159	2	4	0	0	0
Timmins P.H.L.	184	27	0	0	27	0	157	0	157	0	7	3	0	0	157	0	151	1	12	0	0	0
St. Joseph's - London	2082	3	0	145	148	0	2075	212	828	2	5	6	11	0	828	22	828	26	587	132	483	6
London P.H.L.	2221	204	24	32	260	4	2194	167	1600	2	18	7	0	0	1600	12	1553	9	76	0	0	0
Orillia P.H.L.	573	30	3	4	37	1	573	69	426	0	2	4	0	0	426	1	415	2	15	0	0	0
Thunder Bay P.H.L.	193	21	2	5	28	0	168	3	161	1	1	8	0	0	160	0	154	4	12	0	0	0
Sudbury P.H.L.	436	13	2	0	15	0	421	18	414	1	4	0	0	0	414	2	390	7	36	0	0	0
Hamilton P.H.L.	2068	141	37	17	195	3	2048	87	1663	2	13	12	0	0	1663	9	1634	7	53	0	0	0
Peterborough P.H.L.	674	35	9	14	58	2	671	31	550	2	3	0	0	0	550	0	545	3	7	0	0	0
Province of Ontario	31161	1316	357	1037	2710	61	30774	1963	16857	34	167	96	40	0	16524	138	16499	159	4494	757	3791	169
Manitoba	6068	236	24	659	919	4	5966	200	2488	0	10	14	11	0	2488	28	1407	25	2488	319	1441	26
Regina	6010	1367	62	141	1570	1	6010	162	7943	3	54	81	35	0	6010	87	6010	52	6010	1194	6010	60
Saskatoon	3688	0	0	667	667	8	3688	162	3688	1	5	7	9	0	3688	26	3688	17	3688	236	3688	16
Province of Saskatchewan	9698	1367	62	808	2237	9	9698	324	11631	4	59	88	44	0	9698	113	9698	69	9698	1430	9698	76
Province of Alberta	22310	3362	105	1635	5102	38	17840	0	17840	20	165	208	187	0	17840	213	17840	273	17840	2975	17840	569
Prairies	38076	4965	191	3102	8258	51	33504	524	31959	24	234	310	242	0	30026	354	28945	367	30026	4724	28979	671
British Columbia	12351	2096	139	752	2987	16	12351	492	5398	9	46	115	78	0	5398	63	5398	17	4236	1090	4236	122
Yukon	196	37	1	7	45	0	196	3	N.A.	N.A.	N.A.	N.A.	N.A.	N.A.	N.A.	N.A.	N.A.	N.A.	N.A.	N.A.	N.A.	N.A.
Northwest Territories	505	146	2	0	148	0	501	0	501	0	0	18	3	0	501	15	501	2	501	95	501	11
Nunavut	47	9	0	0	9	0	47	0	47	0	0	0	0	0	47	5	46	0	47	16	46	1
Territories	748	192	3	7	202	0	744	3	548	0	0	18	3	0	548	20	547	2	548	111	547	12
CANADA	147162	8814	700	15995	25510	306	138066	8216	72890	117	654	655	442	0	70710	1129	69006	679	43169	7212	53165	1478

Specimens from YT, NT and NU are sent to reference laboratories in other provinces and reported results reflect specimens identified as originating from YT, NT or NU.

Results from British Columbia comprise of specimens from the following sites: BC Children's and Women's Hospital, Powell River Hospital, St. Paul's Hospital, Vancouver General Hospital, Victoria General Hospital, Interior Health Authority sites and Northern Health Authority sites.

Delays in the reporting of data may cause data to change retrospectively.

Due to reporting delays, the sum of weekly report totals do not add up to cumulative totals.

Figure 1: Number positive laboratory tests for other respiratory viruses by report week, Canada, 2018-19

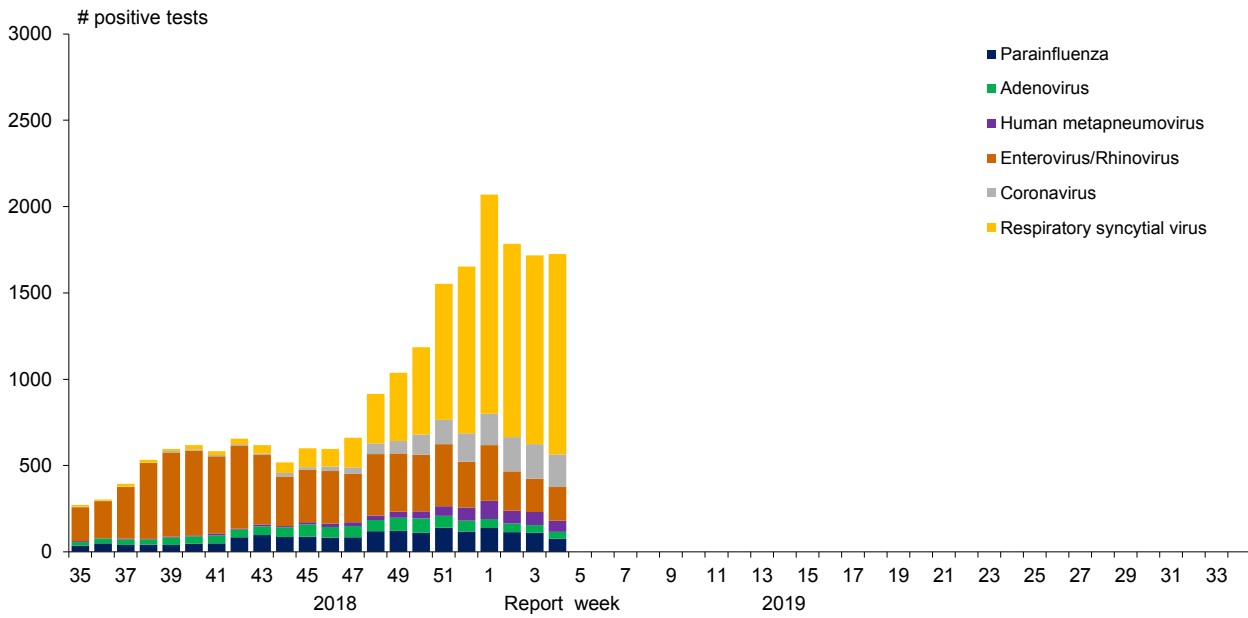


Figure 2: Positive Influenza Tests (%) in Canada by Region by Week of Report

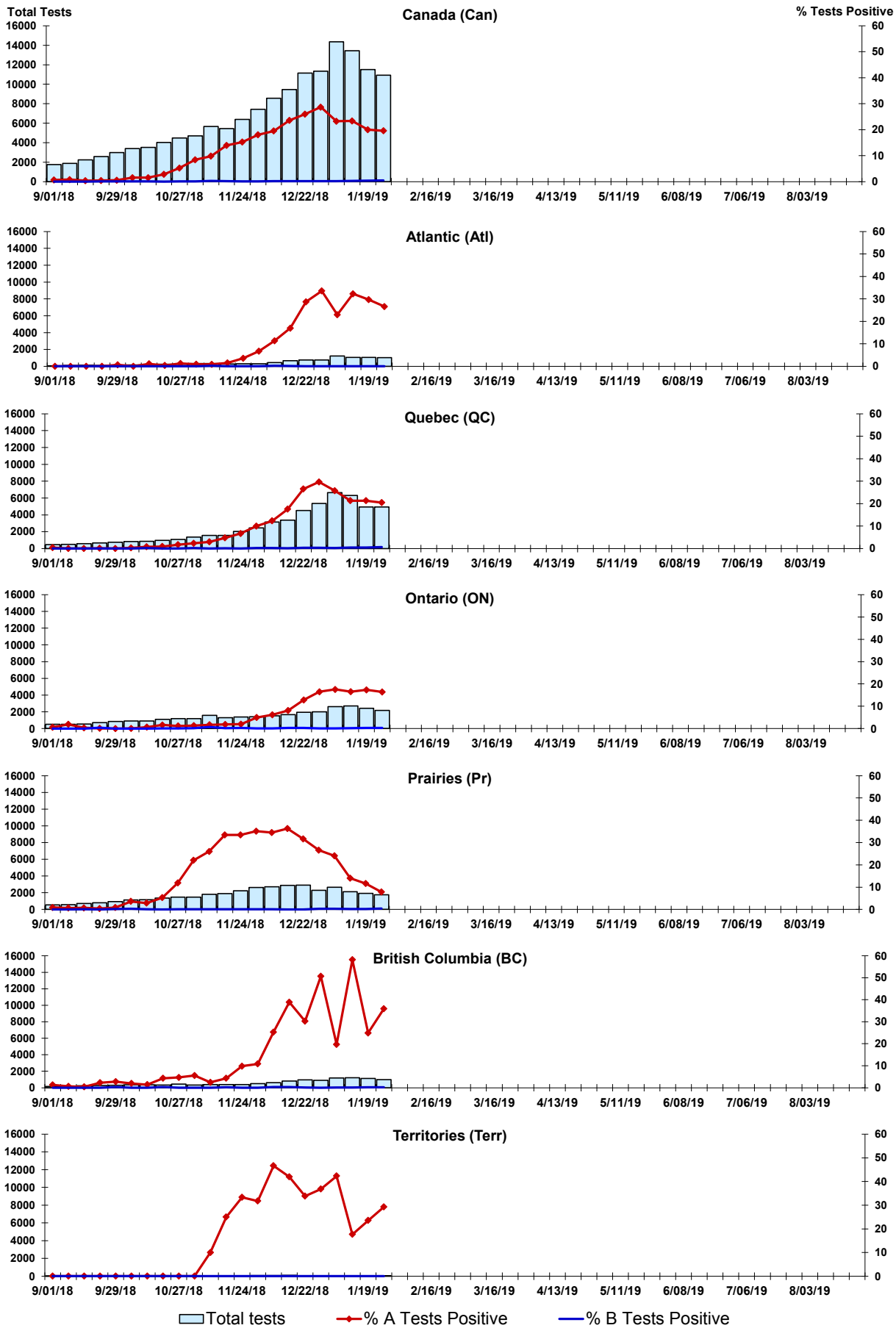


Figure 3: Positive Respiratory syncytial virus (RSV) Tests (%) in Canada by Region by Week of Report

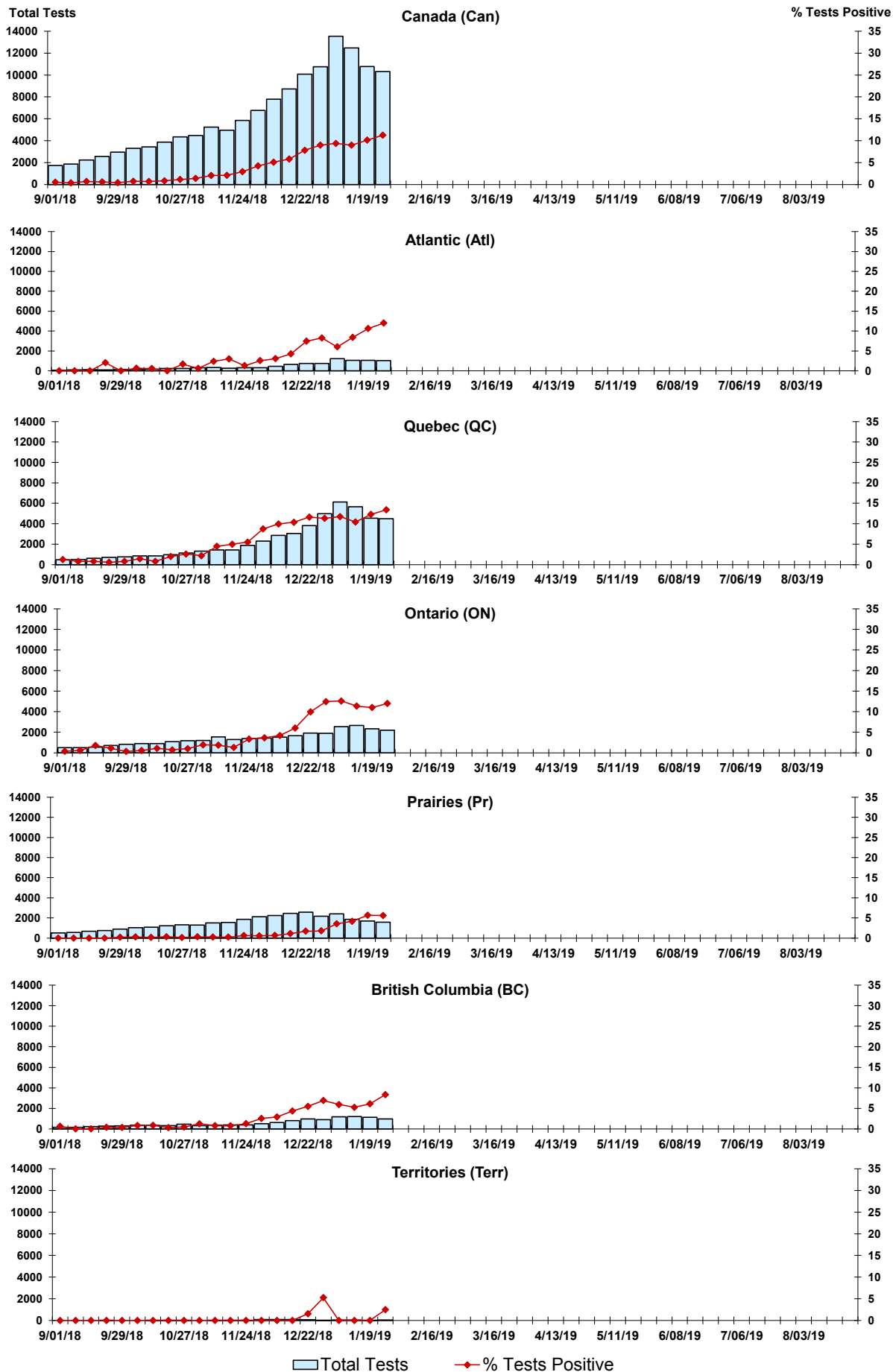


Figure 4: Positive Parainfluenza (PIV) Tests (%) in Canada by Region by Week of Report

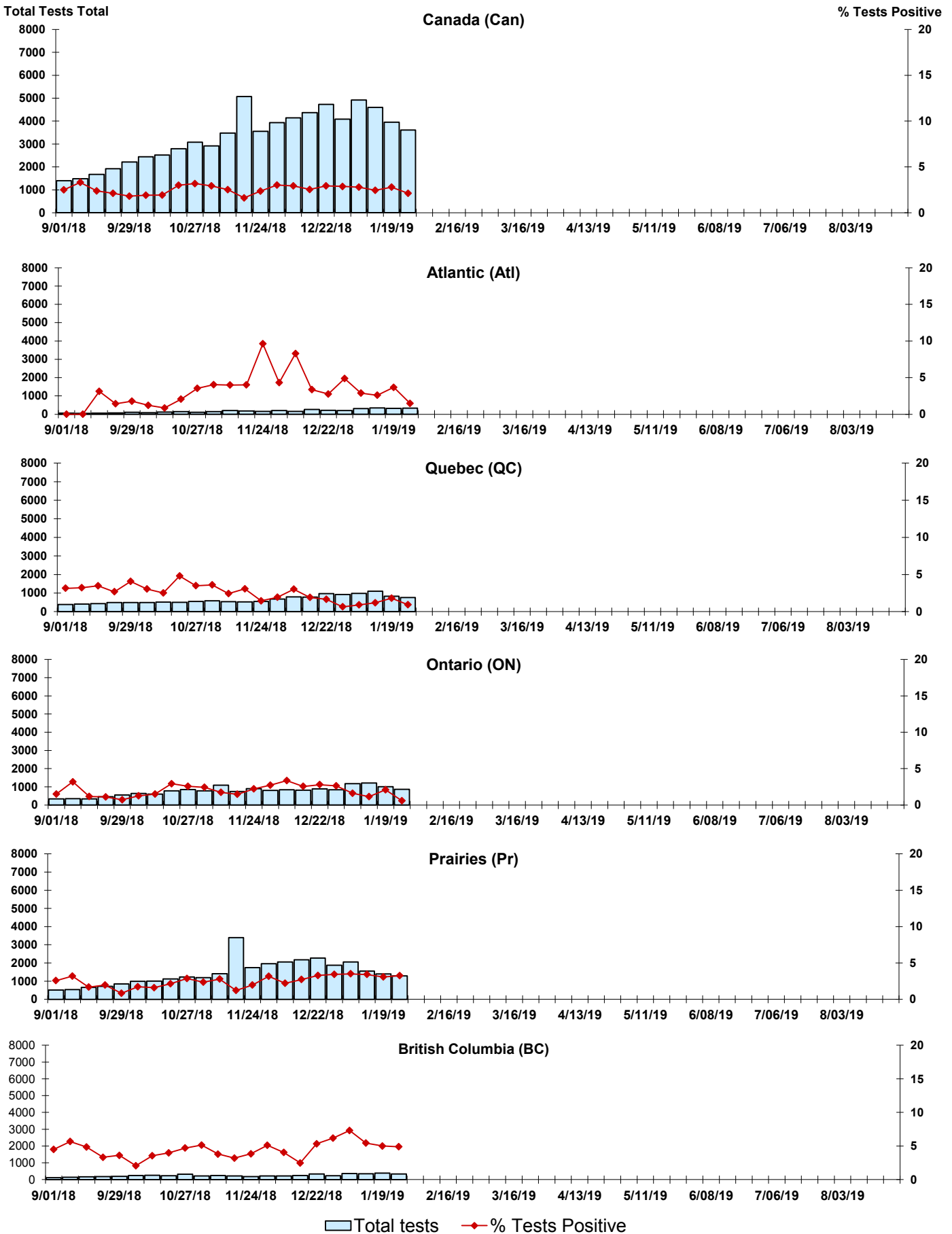


Figure 5: Positive Adenovirus (adeno) Tests (%) in Canada by Region by Week of Report

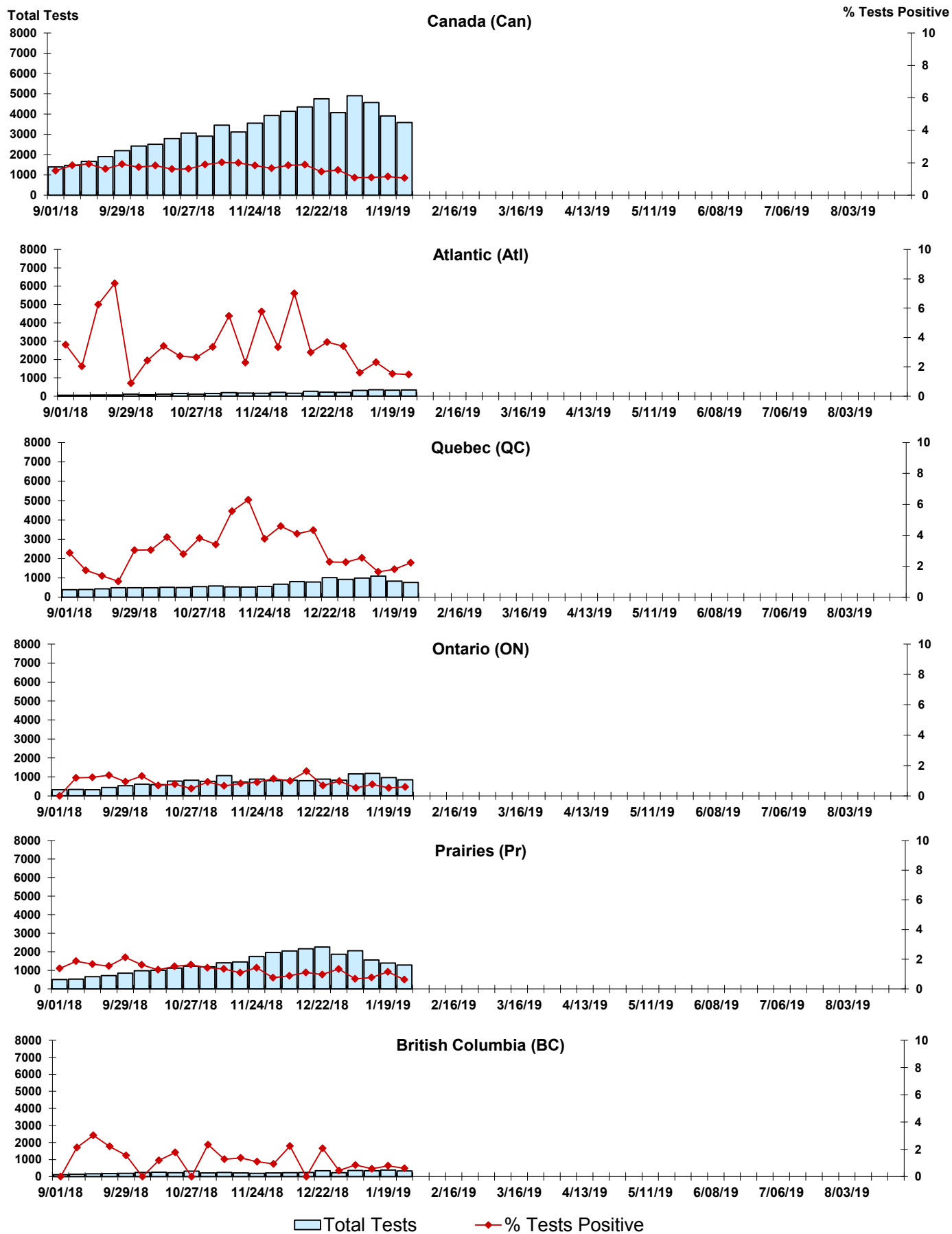


Figure 6: Positive human metapneumovirus (hMPV) Tests (%) in Canada by Region by Week of Report

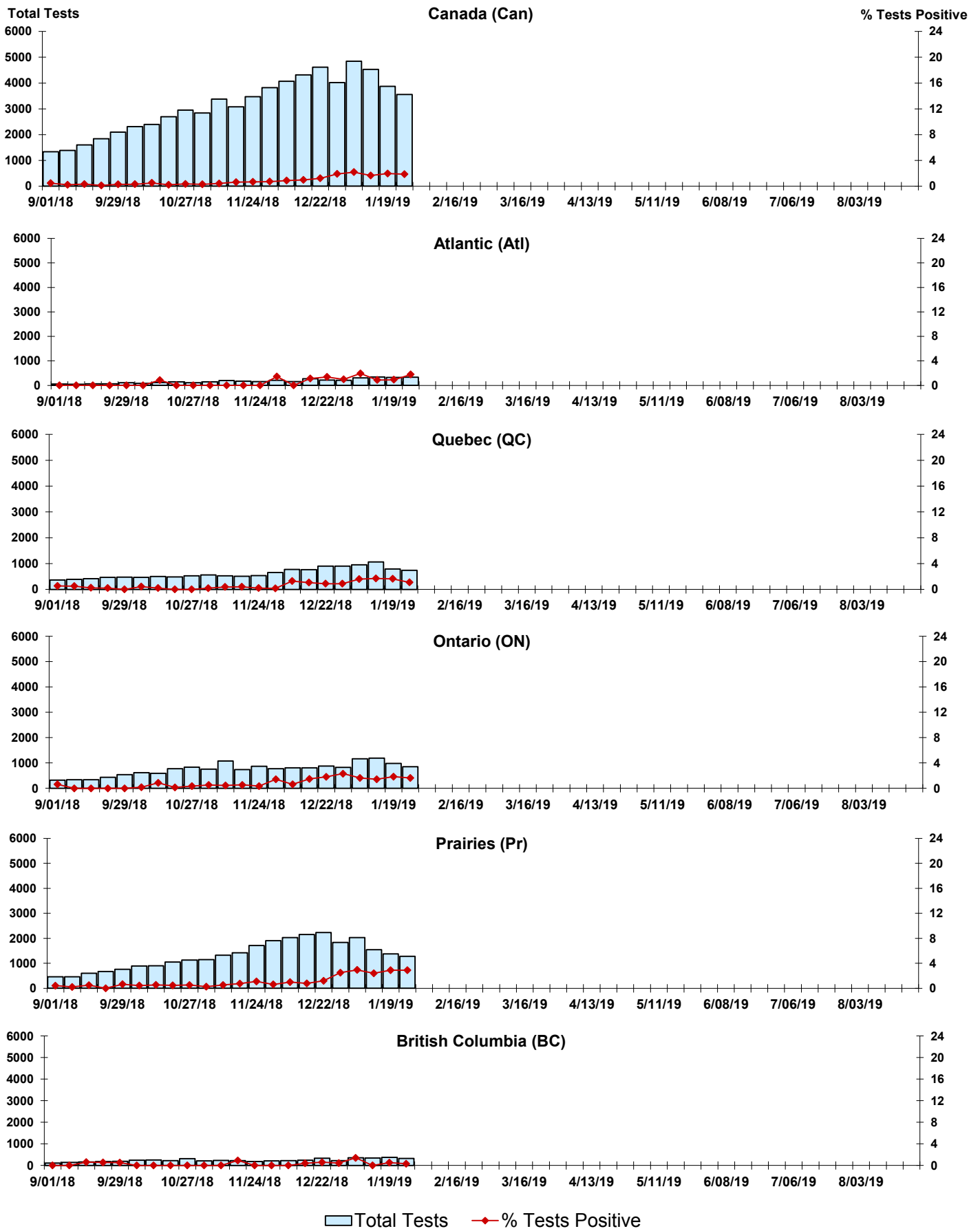


Figure 7: Positive Enterovirus/Rhinovirus (entero/rhino) Tests (%) in Canada by Region by Week of Report

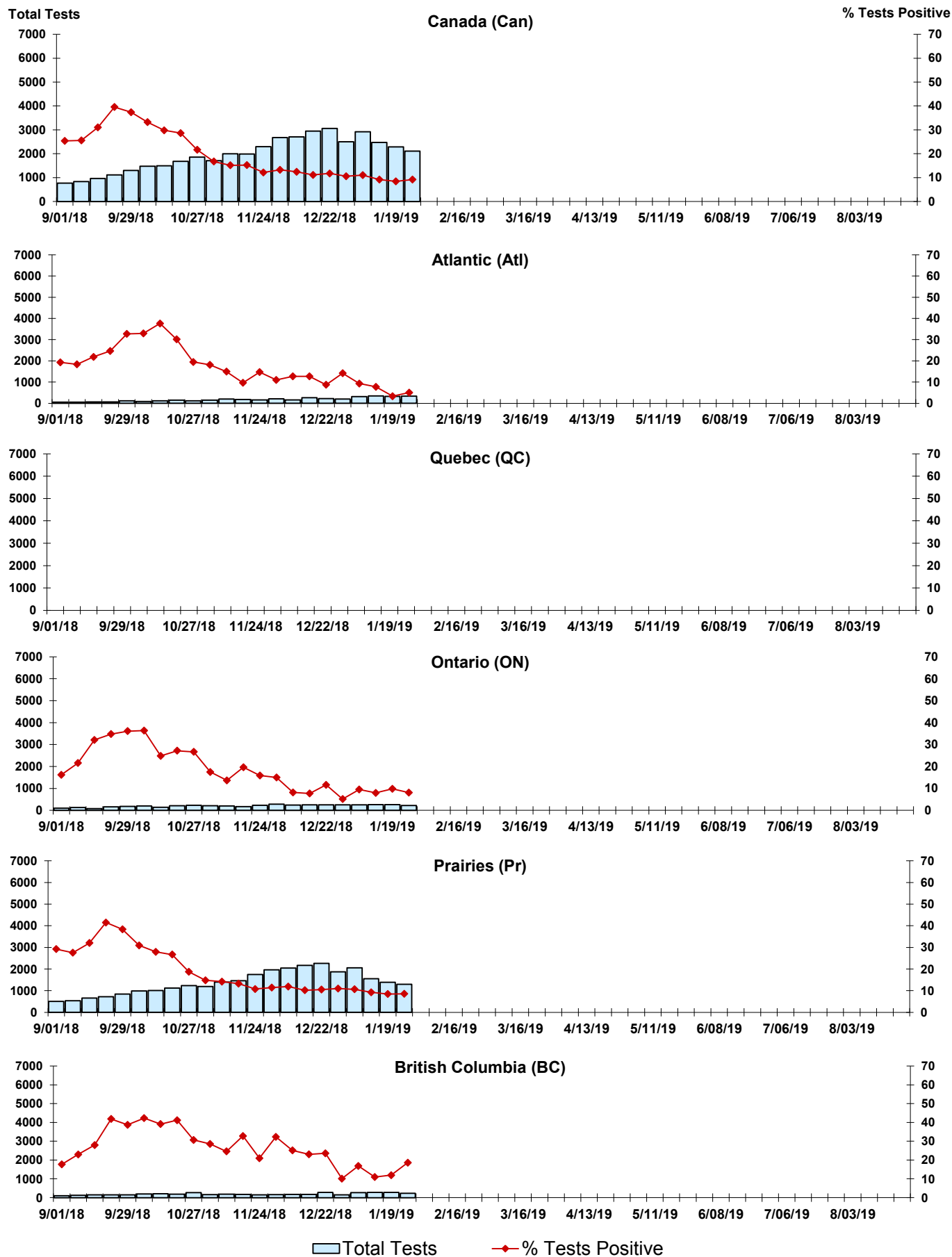
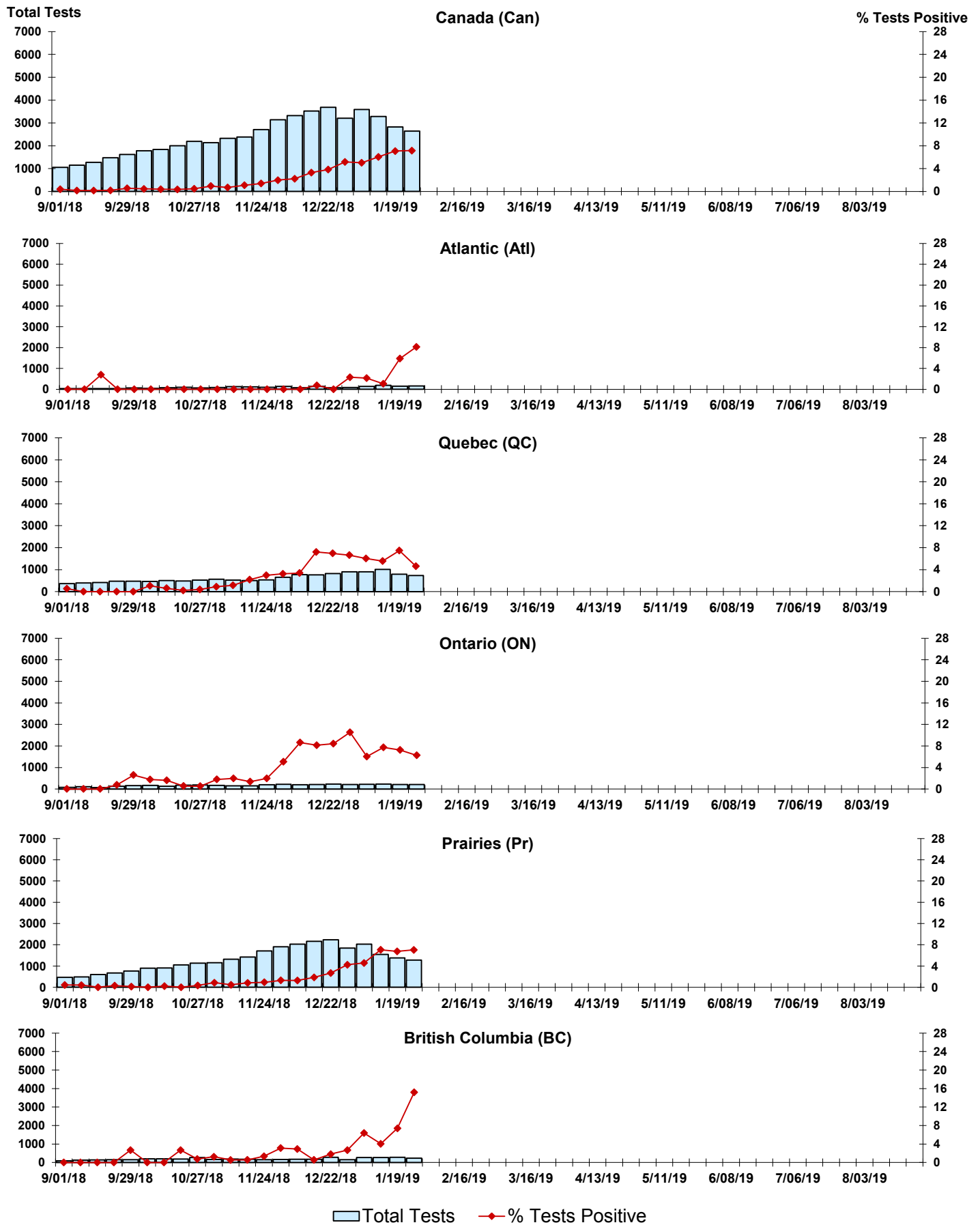


Figure 8: Positive Coronavirus (coron) Tests (%) in Canada by Region by Week of Report



Abbreviations:

A(H1N1)pdm09: Influenza A(H1N1)pdm09

A(H3): Influenza A(H3N2)

A (UnS): Influenza A (Unsubtyped)

Adeno: Adenovirus

CHEO: Children's Hospital of Eastern Ontario

Coron: Coronavirus

Entero: Enterovirus

hMPV: human metapneumovirus

HSC: Health Sciences Centre

N.A.: Not Applicable

P.H.L.: Public Health Laboratory

P.H.O.L.: Public Health Ontario Laboratory

PIV: Parainfluenza

Rhino: Rhinovirus

RSV: Respiratory syncytial virus

UHN: University Health Network

Notes:

Specimens from Yukon (YT), Northwest Territories (NT) and Nunavut (NU) are sent to reference laboratories in other provinces. Results reported for the Territories reflect the number of specimens that are identified as originating from YT, NT or NU.

Delays in the reporting of data may cause data to change retrospectively.

Due to reporting delays, the sum of weekly report totals do not add up to cumulative totals.