

# Respiratory Virus Detections in Canada

## Respiratory Virus Report, Week 05 - ending February 2, 2019

The Respiratory Virus Detection Surveillance System collects data from select laboratories across Canada on the number of tests performed and the number of tests positive for influenza and other respiratory viruses. Data are reported on a weekly basis year-round to the Centre for Immunization and Respiratory Infectious Diseases (CIRID), Public Health Agency of Canada. These data are also summarized in the weekly FluWatch report.

**Table 1: Respiratory Virus Detections/Isolations for the week ending February 2, 2019 (Reporting Week 201905)**

Reporting Laboratory	Flu Tested	A(H1N1)pdm09 Positive	A(H3) Positive	A(UnS) Positive	Total Flu A Positive	Total Flu B Positive	RSV Tested	RSV Positive	PIV Tested	PIV 1 Positive	PIV 2 Positive	PIV 3 Positive	PIV 4 Positive	Other PIV Positive	Adeno Tested	Adeno Positive	hMPV Tested	hMPV Positive	Entero/Rhino Tested	Entero/Rhino Positive	Coron Tested	Coron Positive
Newfoundland	181	0	0	38	38	0	181	26	181	0	10	5	0	0	181	3	181	6	181	13	N.A.	N.A.
Prince Edward Island	79	20	0	0	20	0	79	10	0	0	0	0	0	0	0	0	0	0	0	0	0	0
Nova Scotia	152	0	0	32	32	0	157	24	13	0	0	0	1	0	13	0	13	1	13	2	13	0
New Brunswick	691	27	1	148	176	0	691	82	150	0	0	0	3	0	150	5	150	1	150	9	150	17
<b>Atlantic</b>	<b>1103</b>	<b>47</b>	<b>1</b>	<b>218</b>	<b>266</b>	<b>0</b>	<b>1108</b>	<b>142</b>	<b>344</b>	<b>0</b>	<b>10</b>	<b>5</b>	<b>4</b>	<b>0</b>	<b>344</b>	<b>8</b>	<b>344</b>	<b>8</b>	<b>344</b>	<b>24</b>	<b>163</b>	<b>17</b>
Région Nord-Est	304	0	0	51	51	1	265	37	0	0	0	0	0	0	0	0	0	0	N.A.	N.A.	0	0
Québec-Chaudière-Appalaches	696	0	0	158	158	1	733	97	88	0	0	2	1	0	89	0	67	2	N.A.	N.A.	66	0
Centre-du-Québec	944	0	0	213	213	16	748	120	0	0	0	0	0	0	0	0	0	0	N.A.	N.A.	0	0
Montréal-Laval	1544	0	0	252	252	3	1475	170	638	0	1	5	0	0	638	17	631	18	N.A.	N.A.	631	33
Ouest du Québec	697	0	0	196	196	1	619	113	0	0	0	0	0	0	0	0	0	0	N.A.	N.A.	0	0
Montérégie	352	0	0	70	70	0	352	29	0	0	0	0	0	0	0	0	0	0	N.A.	N.A.	0	0
<b>Province of Québec</b>	<b>4537</b>	<b>0</b>	<b>0</b>	<b>940</b>	<b>940</b>	<b>22</b>	<b>4192</b>	<b>566</b>	<b>726</b>	<b>0</b>	<b>1</b>	<b>7</b>	<b>1</b>	<b>0</b>	<b>727</b>	<b>17</b>	<b>698</b>	<b>20</b>	<b>N.A.</b>	<b>N.A.</b>	<b>697</b>	<b>33</b>
Ottawa P.H.L.	34	9	4	2	15	0	34	3	9	0	0	0	0	0	9	0	9	0	0	0	0	0
CHEO - Ottawa	316	0	0	61	61	0	316	71	26	0	0	1	0	0	26	1	26	2	26	3	24	2
Kingston P.H.L.	42	4	2	2	8	0	41	4	22	0	0	1	0	0	22	0	22	0	1	0	0	0
UHN / Mount Sinai Hospital	427	0	0	51	51	0	427	30	25	0	1	0	0	0	0	0	25	0	N.A.	N.A.	N.A.	N.A.
P.H.O.L. - Toronto	459	61	30	5	96	1	443	47	290	0	1	4	0	0	290	2	284	6	8	0	0	0
Sick Kids Hospital - Toronto	0	0	0	0	0	0	0	0	0	0	0	0	0	0	0	0	0	0	0	0	0	0
Sunnybrook & Women's College HSC	98	4	2	0	6	2	98	0	98	0	0	0	0	0	98	0	98	2	98	6	98	1
Sault Ste. Marie P.H.L.	16	4	0	0	4	0	12	0	12	0	0	0	0	0	12	0	12	0	0	0	0	0
Timmins P.H.L.	13	3	0	0	3	0	10	0	10	0	0	0	0	0	10	0	10	0	0	0	0	0
St. Joseph's - London	198	0	0	40	40	0	198	20	46	0	0	0	0	0	46	1	46	3	46	1	20	2
London P.H.L.	185	30	4	10	44	0	179	32	94	0	0	1	0	0	94	0	89	1	5	0	0	0
Orillia P.H.L.	56	5	6	2	13	0	56	9	22	0	0	0	0	0	22	0	22	1	0	0	0	0
Thunder Bay P.H.L.	14	0	0	0	0	0	12	0	12	0	0	0	0	0	12	0	11	1	1	0	0	0
Sudbury P.H.L.	38	4	0	0	4	0	34	3	31	0	0	0	0	0	31	0	31	1	0	0	0	0
Hamilton P.H.L.	139	24	12	3	39	0	128	10	77	0	0	1	0	0	77	0	76	0	1	0	0	0
Peterborough P.H.L.	34	1	2	0	3	0	34	3	19	0	0	0	0	0	19	0	19	0	0	0	0	0
<b>Province of Ontario</b>	<b>2069</b>	<b>149</b>	<b>62</b>	<b>176</b>	<b>387</b>	<b>3</b>	<b>2022</b>	<b>232</b>	<b>793</b>	<b>0</b>	<b>2</b>	<b>8</b>	<b>0</b>	<b>0</b>	<b>768</b>	<b>4</b>	<b>780</b>	<b>17</b>	<b>186</b>	<b>10</b>	<b>167</b>	<b>7</b>
Manitoba	266	13	1	10	24	1	262	36	51	0	0	0	0	0	51	0	40	10	51	3	40	4
Regina	156	11	1	3	15	2	156	22	156	0	0	2	0	0	156	1	156	9	156	14	156	18
Saskatoon	206	0	0	4	4	0	206	37	206	0	0	0	1	0	206	0	206	2	206	2	206	4
Province of Saskatchewan	362	11	1	7	19	2	362	59	362	0	0	2	1	0	362	1	362	11	362	16	362	22
Province of Alberta	871	43	7	21	71	8	710	0	710	2	5	4	5	0	710	14	710	29	710	86	710	86
<b>Prairies</b>	<b>1499</b>	<b>67</b>	<b>9</b>	<b>38</b>	<b>114</b>	<b>11</b>	<b>1334</b>	<b>95</b>	<b>1123</b>	<b>2</b>	<b>5</b>	<b>6</b>	<b>6</b>	<b>0</b>	<b>1123</b>	<b>15</b>	<b>1112</b>	<b>50</b>	<b>1123</b>	<b>105</b>	<b>1112</b>	<b>112</b>
<b>British Columbia</b>	<b>918</b>	<b>152</b>	<b>35</b>	<b>45</b>	<b>232</b>	<b>5</b>	<b>918</b>	<b>80</b>	<b>308</b>	<b>1</b>	<b>7</b>	<b>13</b>	<b>6</b>	<b>0</b>	<b>308</b>	<b>10</b>	<b>308</b>	<b>1</b>	<b>231</b>	<b>39</b>	<b>231</b>	<b>26</b>
Yukon	18	4	0	3	7	0	18	3	N.A.	N.A.	N.A.	N.A.	N.A.	N.A.	N.A.	N.A.	N.A.	N.A.	N.A.	N.A.	N.A.	N.A.
Northwest Territories	10	0	0	0	0	0	10	0	10	0	0	1	0	0	10	1	10	1	10	2	10	0
Nunavut	2	2	0	0	2	0	2	0	2	0	0	0	0	0	2	0	2	0	2	0	2	0
<b>Territories</b>	<b>30</b>	<b>6</b>	<b>0</b>	<b>3</b>	<b>9</b>	<b>0</b>	<b>30</b>	<b>3</b>	<b>12</b>	<b>0</b>	<b>0</b>	<b>1</b>	<b>0</b>	<b>0</b>	<b>12</b>	<b>1</b>	<b>12</b>	<b>1</b>	<b>12</b>	<b>2</b>	<b>12</b>	<b>0</b>
<b>CANADA</b>	<b>10156</b>	<b>421</b>	<b>107</b>	<b>1420</b>	<b>1948</b>	<b>41</b>	<b>9604</b>	<b>1118</b>	<b>3306</b>	<b>3</b>	<b>25</b>	<b>40</b>	<b>17</b>	<b>0</b>	<b>3282</b>	<b>55</b>	<b>3254</b>	<b>97</b>	<b>1896</b>	<b>180</b>	<b>2382</b>	<b>195</b>

Specimens from Yukon (YT), Northwest Territories (NT) and Nunavut (NU) are sent to reference laboratories in other provinces and reported results reflect specimens identified as originating from YT, NT or NU.

Results from British Columbia comprise of specimens from the following sites: BC Children's and Women's Hospital, Powell River Hospital, St. Paul's Hospital, Vancouver General Hospital, Victoria General Hospital, Interior Health Authority sites and Northern Health Authority sites.

Delays in the reporting of data may cause data to change retrospectively.

**Table 2: Respiratory Virus Detections/Isolations for the period August 26, 2018 - February 2, 2019 (Reporting Weeks 201835-201905)**

Reporting Laboratory	Flu Tested	A(H1N1)pdm09 Positive	A(H3) Positive	A(UnS) Positive	Total Flu A Positive	Total Flu B Positive	RSV Tested	RSV Positive	PIV Tested	PIV 1 Positive	PIV 2 Positive	PIV 3 Positive	PIV 4 Positive	Other PIV Positive	Adeno Tested	Adeno Positive	hMPV Tested	hMPV Positive	Entero/Rhino Tested	Entero/Rhino Positive	Coron Tested	Coron Positive
Newfoundland	1988	1	0	250	251	1	1988	169	1988	0	26	48	0	0	1988	20	1988	17	1988	236	N.A.	N.A.
Prince Edward Island	609	151	0	0	151	0	607	27	58	0	0	1	3	0	53	5	53	0	53	21	53	0
Nova Scotia	1427	0	0	161	161	3	1438	118	362	0	3	9	2	0	362	0	362	4	362	56	362	3
New Brunswick	6969	140	11	1445	1596	2	6972	426	1806	0	15	8	36	0	1806	102	1806	17	1806	241	1806	45
<b>Atlantic</b>	<b>10993</b>	<b>292</b>	<b>11</b>	<b>1856</b>	<b>2159</b>	<b>6</b>	<b>11005</b>	<b>740</b>	<b>4214</b>	<b>0</b>	<b>44</b>	<b>66</b>	<b>41</b>	<b>0</b>	<b>4209</b>	<b>127</b>	<b>4209</b>	<b>38</b>	<b>4209</b>	<b>554</b>	<b>2221</b>	<b>48</b>
Région Nord-Est	4996	0	0	1000	1000	4	3753	158	0	0	0	0	0	0	0	0	0	0	N.A.	N.A.	0	0
Québec-Chaudière-Appalaches	8169	0	0	1830	1830	13	8385	877	1710	4	29	11	8	0	1766	67	1443	7	N.A.	N.A.	1295	6
Centre-du-Québec	9637	0	0	2258	2258	112	7801	779	0	0	0	0	0	0	36	0	0	0	N.A.	N.A.	0	0
Montréal-Laval	23796	0	0	2730	2730	43	22968	2042	13274	46	145	51	35	0	13274	385	13007	117	N.A.	N.A.	12956	500
Ouest du Québec	7844	0	0	1732	1732	14	7063	960	0	0	0	0	0	0	0	0	0	0	N.A.	N.A.	0	0
Montérégie	5028	0	0	849	850	8	5015	386	0	0	0	0	0	0	0	0	0	0	N.A.	N.A.	0	0
<b>Province of Québec</b>	<b>59470</b>	<b>0</b>	<b>0</b>	<b>10399</b>	<b>10400</b>	<b>194</b>	<b>54985</b>	<b>5202</b>	<b>14984</b>	<b>50</b>	<b>174</b>	<b>62</b>	<b>43</b>	<b>0</b>	<b>15076</b>	<b>452</b>	<b>14450</b>	<b>124</b>	<b>N.A.</b>	<b>N.A.</b>	<b>14251</b>	<b>506</b>
Ottawa P.H.L.	555	65	18	13	96	0	550	43	327	0	2	3	0	0	327	0	311	1	18	0	0	0
CHEO - Ottawa	4444	0	0	385	385	10	4444	549	541	0	7	5	5	0	541	17	540	8	533	145	532	22
Kingston P.H.L.	556	36	17	5	58	0	555	34	429	0	3	3	0	0	429	0	413	2	56	0	0	0
UHN / Mount Sinai Hospital	6845	4	7	447	458	15	6845	340	358	0	9	0	2	0	0	0	334	2	N.A.	N.A.	N.A.	N.A.
P.H.O.L. - Toronto	8678	668	245	56	969	26	8422	339	6914	12	56	27	0	0	6915	29	6736	40	309	0	0	0
Sick Kids Hospital - Toronto	1348	74	4	27	105	1	1337	182	1337	8	34	19	21	0	1337	48	1337	36	1337	348	1337	89
Sunnybrook & Women's College HSC	1504	63	26	8	97	2	1504	39	1504	4	5	5	1	0	1504	1	1504	20	1504	138	1504	52
Sault Ste. Marie P.H.L.	193	14	1	0	15	0	182	5	175	0	0	0	0	0	175	0	171	2	4	0	0	0
Timmins P.H.L.	197	30	0	0	30	0	167	0	167	0	7	3	0	0	167	0	161	1	12	0	0	0
St. Joseph's - London	2280	3	0	185	188	0	2273	232	874	2	5	6	11	0	874	23	874	29	633	133	503	8
London P.H.L.	2406	234	28	42	304	4	2373	199	1695	2	18	8	0	0	1695	12	1643	10	85	0	0	0
Orillia P.H.L.	629	35	9	6	50	1	629	78	461	1	2	4	0	0	461	1	449	3	17	0	0	0
Thunder Bay P.H.L.	207	21	2	5	28	0	183	3	176	1	1	8	0	0	175	0	168	5	15	0	0	0
Sudbury P.H.L.	474	17	2	0	19	0	455	21	446	1	4	0	0	0	446	2	422	8	40	0	0	0
Hamilton P.H.L.	2207	165	49	20	234	3	2176	97	1741	2	13	13	0	0	1741	9	1711	7	57	0	0	0
Peterborough P.H.L.	708	36	12	13	61	2	705	34	573	2	3	0	0	0	573	0	568	3	7	0	0	0
<b>Province of Ontario</b>	<b>33231</b>	<b>1465</b>	<b>420</b>	<b>1212</b>	<b>3097</b>	<b>64</b>	<b>32800</b>	<b>2195</b>	<b>17718</b>	<b>35</b>	<b>169</b>	<b>104</b>	<b>40</b>	<b>0</b>	<b>17360</b>	<b>142</b>	<b>17342</b>	<b>177</b>	<b>4702</b>	<b>767</b>	<b>3958</b>	<b>176</b>
Manitoba	6334	250	24	669	943	5	6228	236	2539	0	10	14	11	0	2539	28	1447	35	2539	322	1481	30
Regina	6166	1378	63	144	1585	3	6166	184	8099	3	54	83	35	0	6166	88	6166	61	6166	1208	6166	78
Saskatoon	3894	0	0	671	671	8	3894	199	3894	1	5	7	10	0	3894	26	3894	19	3894	238	3894	19
Province of Saskatchewan	10060	1378	63	815	2256	11	10060	383	11993	4	59	90	45	0	10060	114	10060	80	10060	1446	10060	97
Province of Alberta	23259	3412	113	1659	5184	46	18601	0	18601	22	170	216	192	0	18601	229	18601	306	18601	3064	18601	662
<b>Prairies</b>	<b>39653</b>	<b>5040</b>	<b>200</b>	<b>3143</b>	<b>8383</b>	<b>62</b>	<b>34889</b>	<b>619</b>	<b>33133</b>	<b>26</b>	<b>239</b>	<b>320</b>	<b>248</b>	<b>0</b>	<b>31200</b>	<b>371</b>	<b>30108</b>	<b>421</b>	<b>31200</b>	<b>4832</b>	<b>30142</b>	<b>789</b>
<b>British Columbia</b>	<b>13269</b>	<b>2256</b>	<b>176</b>	<b>742</b>	<b>3174</b>	<b>21</b>	<b>13269</b>	<b>572</b>	<b>5724</b>	<b>10</b>	<b>53</b>	<b>128</b>	<b>84</b>	<b>0</b>	<b>5724</b>	<b>74</b>	<b>5724</b>	<b>18</b>	<b>4485</b>	<b>1129</b>	<b>4485</b>	<b>148</b>
Yukon	214	41	1	10	52	0	214	6	N.A.	N.A.	N.A.	N.A.	N.A.	N.A.	N.A.	N.A.	N.A.	N.A.	N.A.	N.A.	N.A.	N.A.
Northwest Territories	518	147	2	0	149	0	514	0	514	0	0	19	3	0	514	16	514	3	514	97	514	11
Nunavut	50	11	0	0	11	0	50	0	50	0	0	0	0	0	50	6	49	0	50	17	49	1
<b>Territories</b>	<b>782</b>	<b>199</b>	<b>3</b>	<b>10</b>	<b>212</b>	<b>0</b>	<b>778</b>	<b>6</b>	<b>564</b>	<b>0</b>	<b>0</b>	<b>19</b>	<b>3</b>	<b>0</b>	<b>564</b>	<b>22</b>	<b>563</b>	<b>3</b>	<b>564</b>	<b>114</b>	<b>563</b>	<b>12</b>
<b>CANADA</b>	<b>157398</b>	<b>9252</b>	<b>810</b>	<b>17362</b>	<b>27425</b>	<b>347</b>	<b>147726</b>	<b>9334</b>	<b>76337</b>	<b>121</b>	<b>679</b>	<b>699</b>	<b>459</b>	<b>0</b>	<b>74133</b>	<b>1188</b>	<b>72396</b>	<b>781</b>	<b>45160</b>	<b>7396</b>	<b>55620</b>	<b>1679</b>

Specimens from YT, NT and NU are sent to reference laboratories in other provinces and reported results reflect specimens identified as originating from YT, NT or NU.

Results from British Columbia comprise of specimens from the following sites: BC Children's and Women's Hospital, Powell River Hospital, St. Paul's Hospital, Vancouver General Hospital, Victoria General Hospital, Interior Health Authority sites and Northern Health Authority sites.

Delays in the reporting of data may cause data to change retrospectively.

Due to reporting delays, the sum of weekly report totals do not add up to cumulative totals.

Figure 1: Number positive laboratory tests for other respiratory viruses by report week, Canada, 2018-19

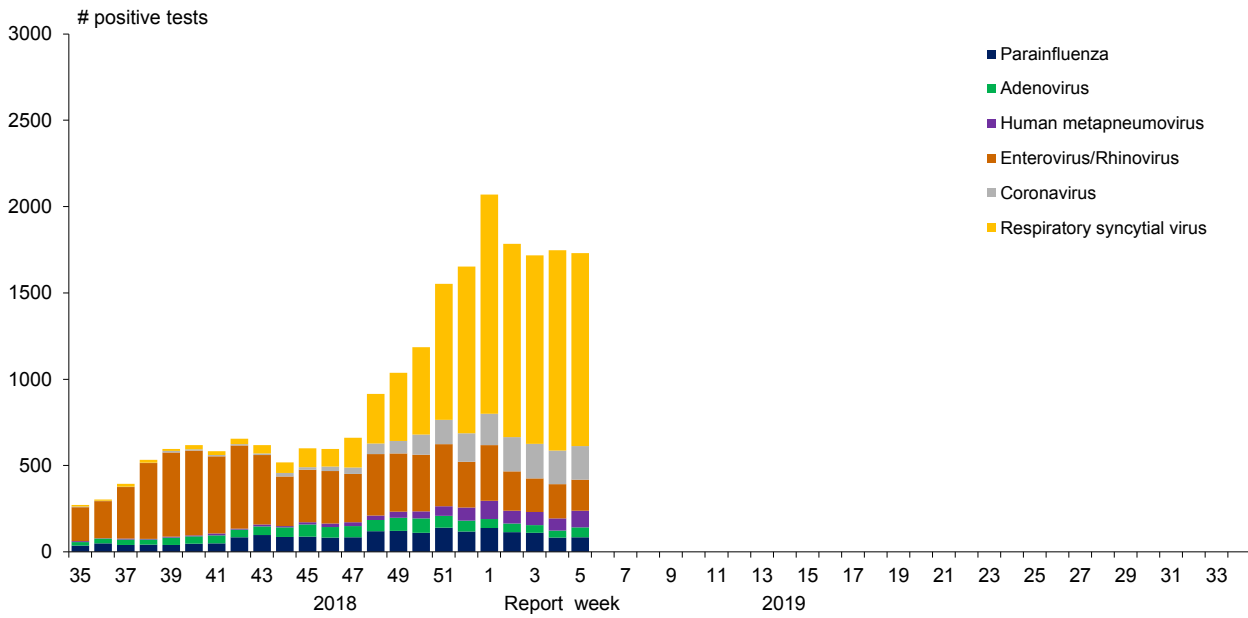


Figure 2: Positive Influenza Tests (%) in Canada by Region by Week of Report

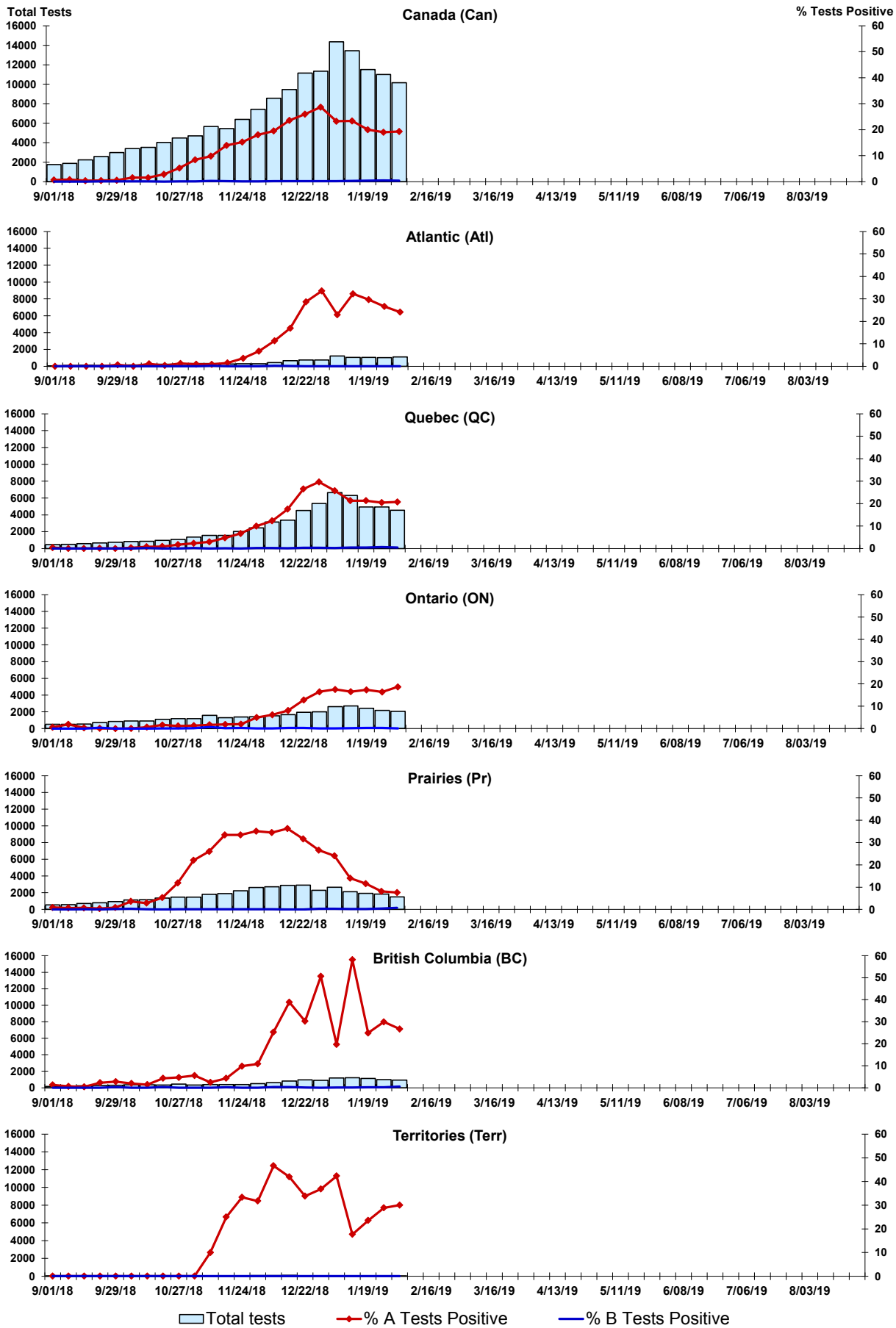


Figure 3: Positive Respiratory syncytial virus (RSV) Tests (%) in Canada by Region by Week of Report

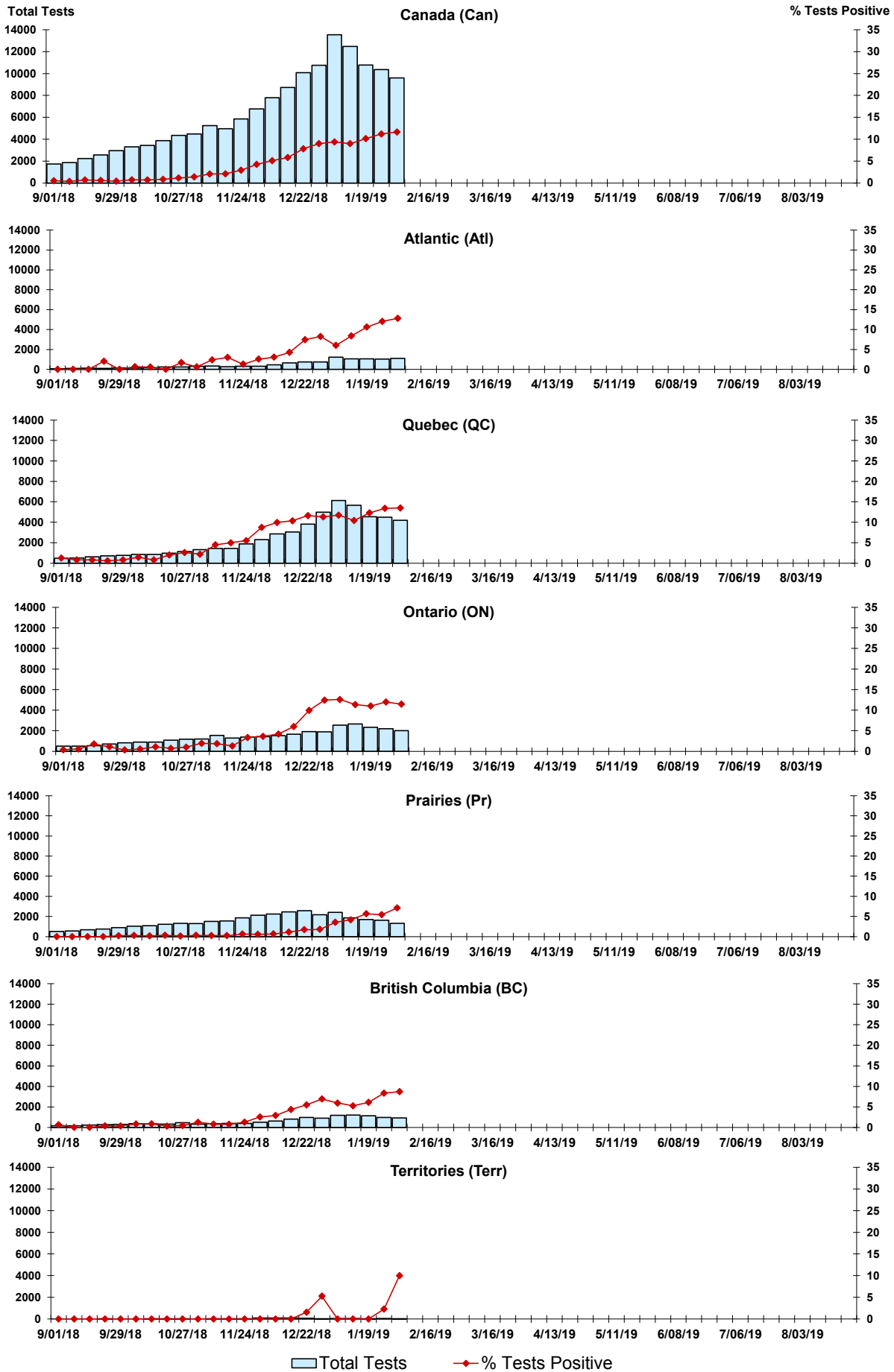


Figure 4: Positive Parainfluenza (PIV) Tests (%) in Canada by Region by Week of Report

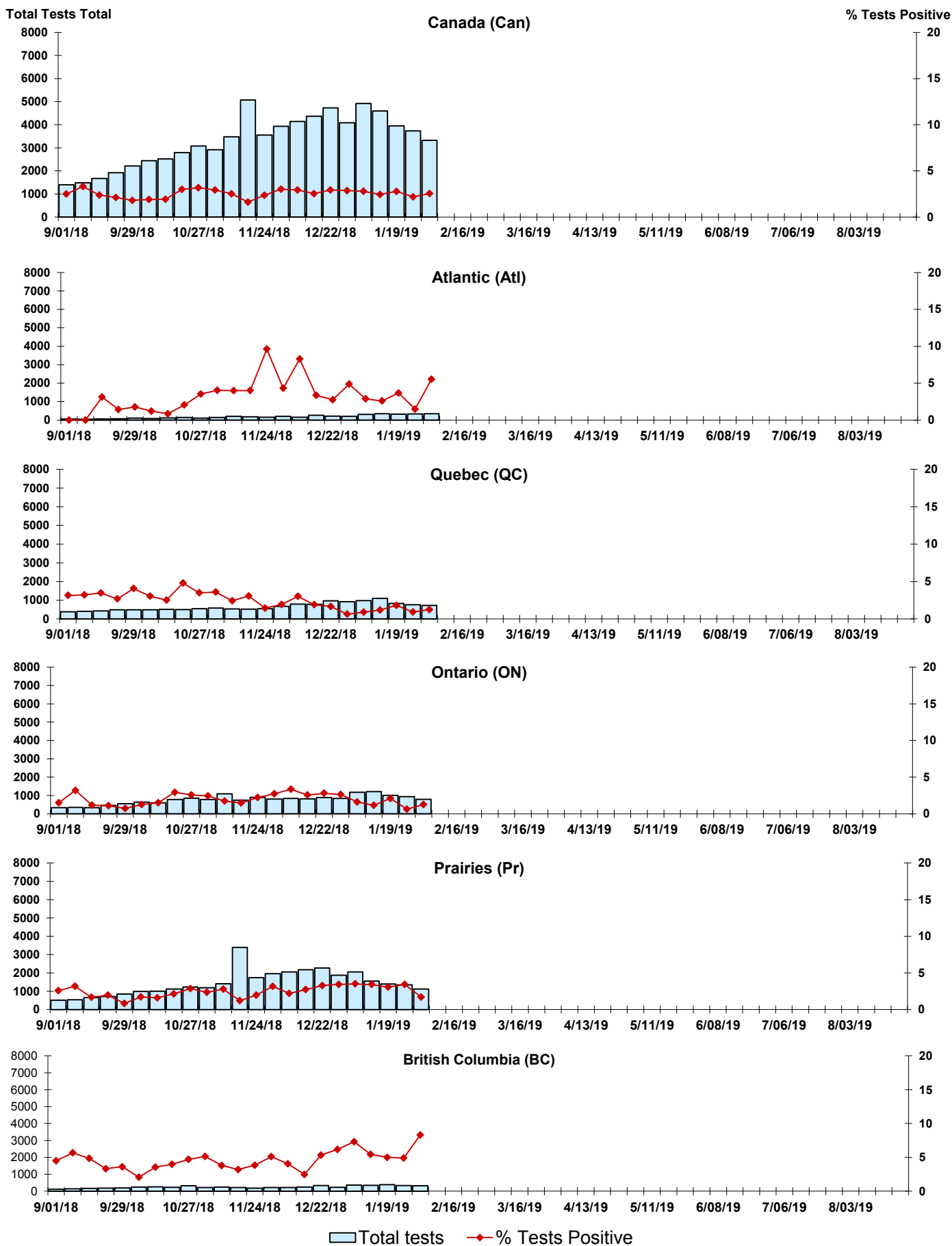


Figure 5: Positive Adenovirus (adeno) Tests (%) in Canada by Region by Week of Report

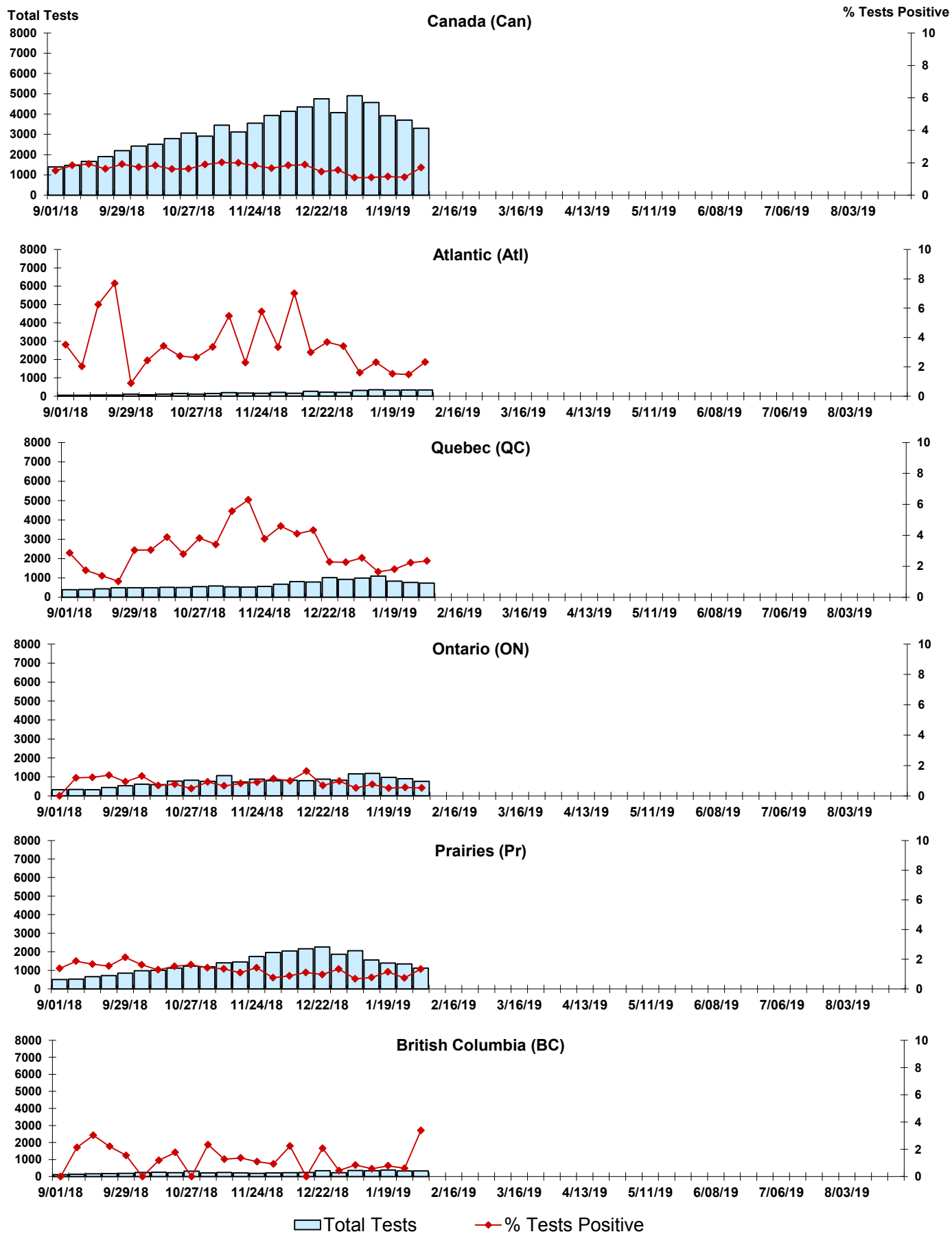


Figure 6: Positive human metapneumovirus (hMPV) Tests (%) in Canada by Region by Week of Report

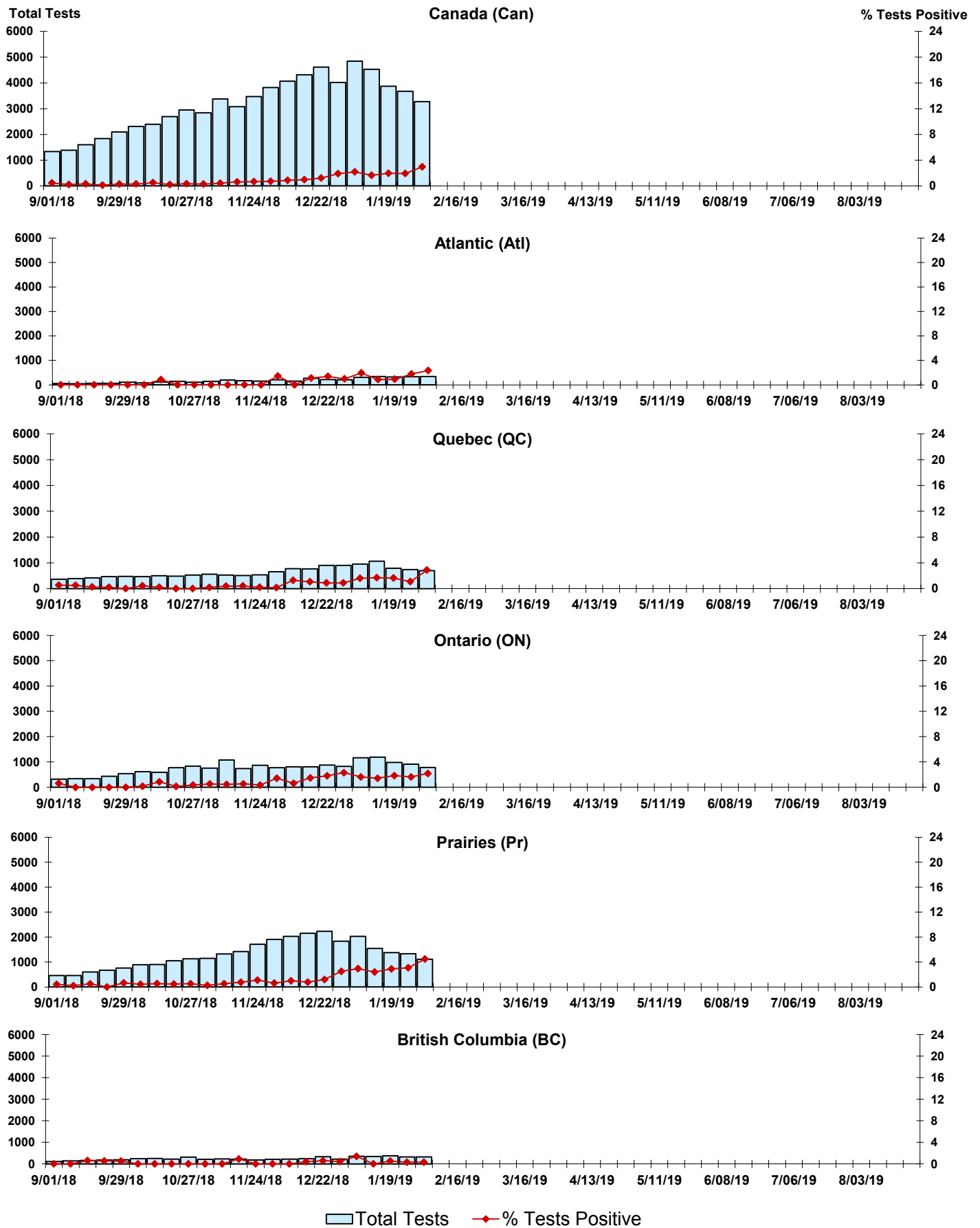




Figure 7: Positive Enterovirus/Rhinovirus (entero/rhino) Tests (%) in Canada by Region by Week of Report

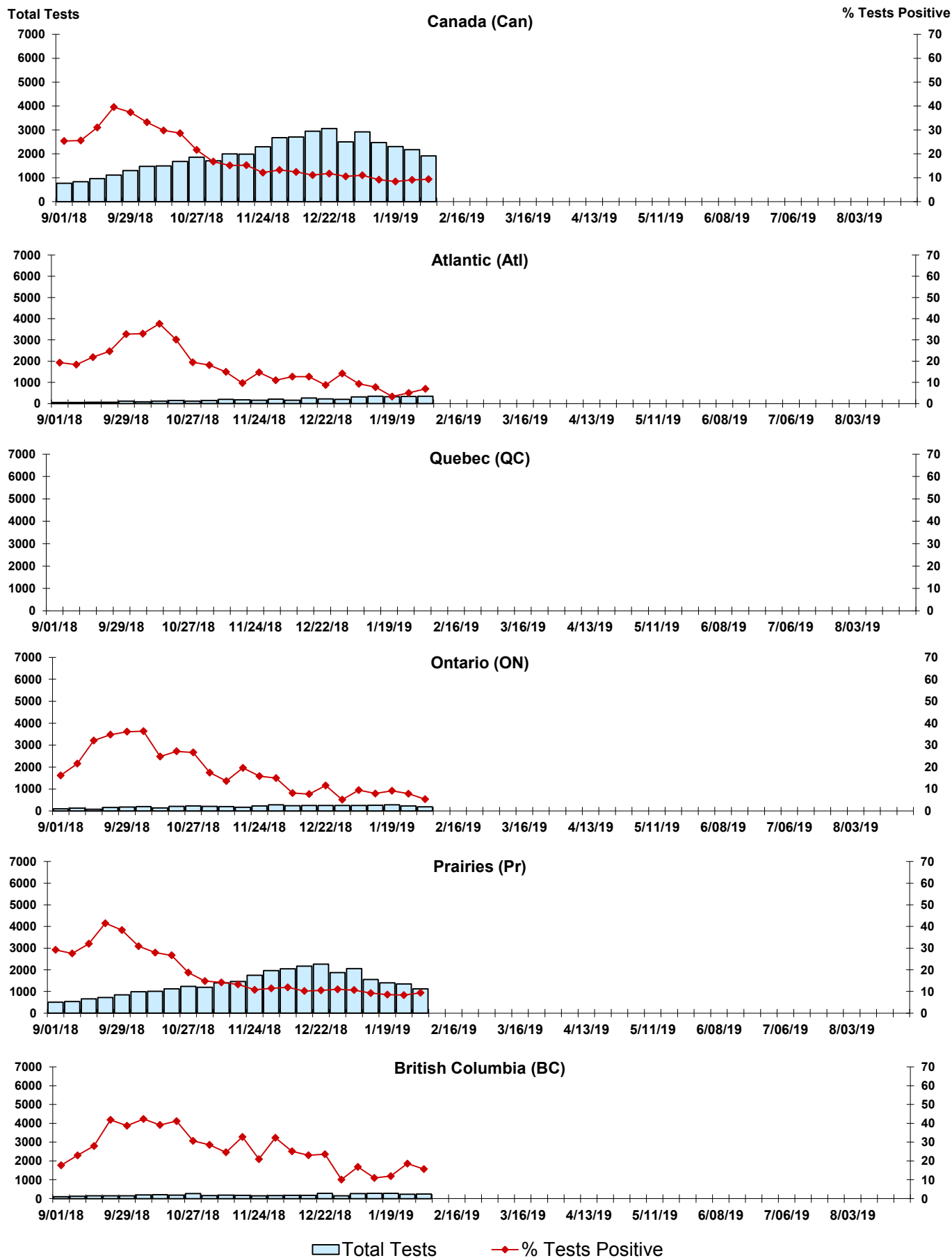
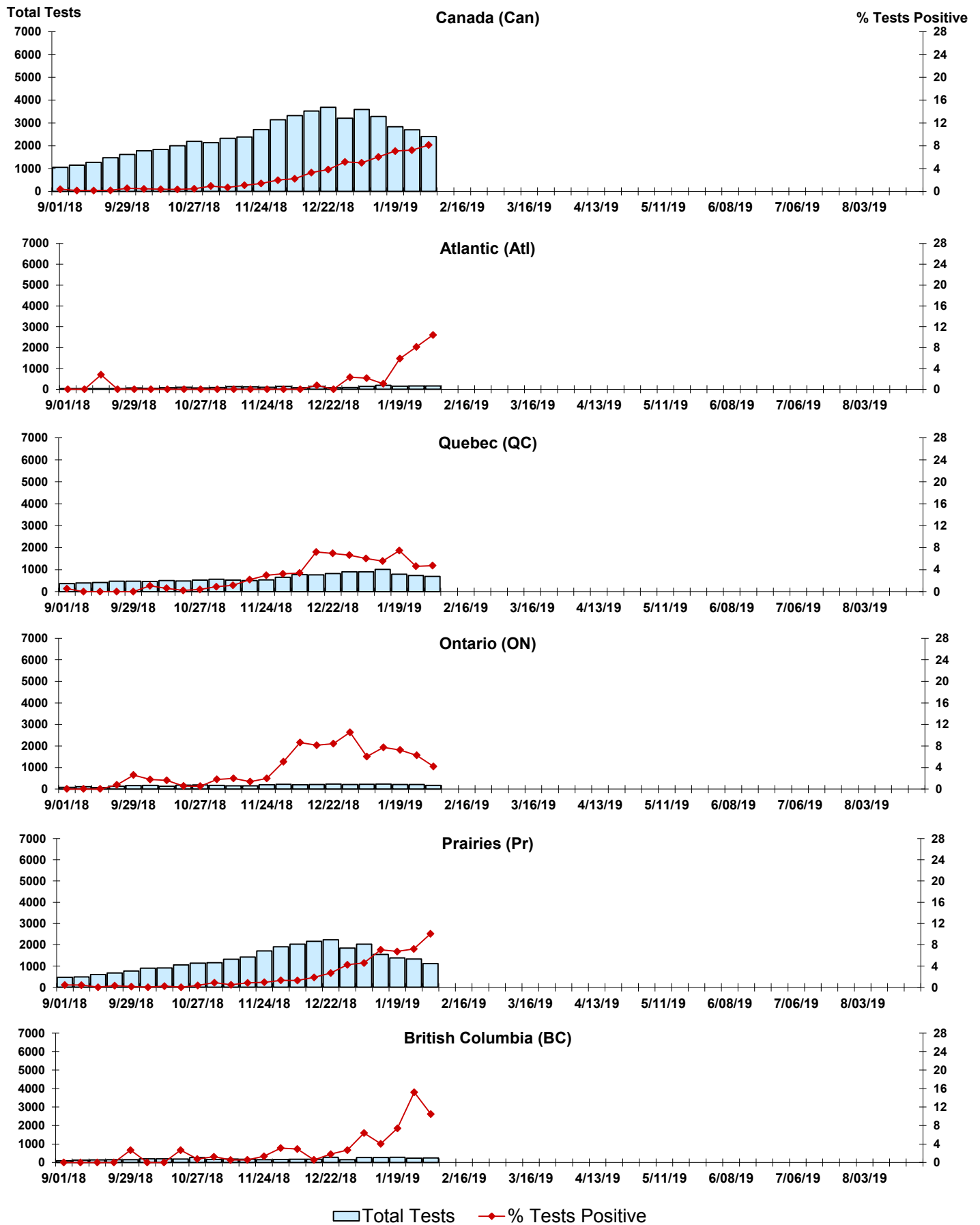


Figure 8: Positive Coronavirus (coron) Tests (%) in Canada by Region by Week of Report



## Abbreviations:

A(H1N1)pdm09: Influenza A(H1N1)pdm09

A(H3): Influenza A(H3N2)

A (UnS): Influenza A (Unsubtyped)

Adeno: Adenovirus

CHEO: Children's Hospital of Eastern Ontario

Coron: Coronavirus

Entero: Enterovirus

hMPV: human metapneumovirus

HSC: Health Sciences Centre

N.A.: Not Applicable

P.H.L.: Public Health Laboratory

P.H.O.L.: Public Health Ontario Laboratory

PIV: Parainfluenza

Rhino: Rhinovirus

RSV: Respiratory syncytial virus

UHN: University Health Network

## Notes:

Specimens from Yukon (YT), Northwest Territories (NT) and Nunavut (NU) are sent to reference laboratories in other provinces. Results reported for the Territories reflect the number of specimens that are identified as originating from YT, NT or NU.

Delays in the reporting of data may cause data to change retrospectively.

Due to reporting delays, the sum of weekly report totals do not add up to cumulative totals.