

Respiratory Virus Detections in Canada

Respiratory Virus Report, Week 46 - ending November 16, 2019

The Respiratory Virus Detection Surveillance System collects data from select laboratories across Canada on the number of tests performed and the number of tests positive for influenza and other respiratory viruses. Data are reported on a weekly basis year-round to the Centre for Immunization and Respiratory Infectious Diseases (CIRID), Public Health Agency of Canada. These data are also summarized in the weekly FluWatch report.

Table 1: Respiratory Virus Detections/Isolations for the week ending November 16, 2019 (Reporting Week 201946)

Reporting Laboratory	Flu Tested	A(H1N1)pdm09 Positive	A(H3) Positive	A(UnS) Positive	Total Flu A Positive	Total Flu B Positive	RSV Tested	RSV Positive	PIV Tested	PIV 1 Positive	PIV 2 Positive	PIV 3 Positive	PIV 4 Positive	Other PIV Positive	Adeno Tested	Adeno Positive	hMPV Tested	hMPV Positive	Entero/Rhino Tested	Entero/Rhino Positive	Coron Tested	Coron Positive
Newfoundland	107	0	4	1	5	0	107	0	107	7	0	0	0	0	107	2	107	0	107	14	N.A.	N.A.
Prince Edward Island	16	0	0	0	0	1	16	0	2	0	0	0	0	0	2	0	2	0	2	2	2	0
Nova Scotia	94	0	0	1	1	0	94	0	20	3	1	0	0	0	20	1	20	0	20	3	20	0
New Brunswick	202	1	1	1	3	0	202	3	62	7	0	0	0	0	62	1	62	0	62	10	62	0
Atlantic	419	1	5	3	9	1	419	3	191	17	1	0	0	0	191	4	191	0	191	29	84	0
Région Nord-Est	103	0	0	0	0	0	82	1	0	0	0	0	0	0	0	0	0	0	N.A.	N.A.	0	0
Québec-Chaudière-Appalaches	123	0	0	0	0	1	164	4	76	2	0	0	0	0	79	2	63	0	N.A.	N.A.	63	0
Centre-du-Québec	228	0	0	3	3	0	194	0	0	0	0	0	0	0	0	0	0	0	N.A.	N.A.	0	0
Montréal-Laval	847	0	0	17	17	7	834	21	497	5	0	1	0	0	497	19	346	0	N.A.	N.A.	475	5
Ouest du Québec	211	0	0	4	4	1	205	9	0	0	0	0	0	0	0	0	0	0	N.A.	N.A.	0	0
Montérégie	179	0	0	7	7	0	179	13	0	0	0	0	0	0	0	0	0	0	N.A.	N.A.	0	0
Province of Québec	1691	0	0	31	31	9	1658	48	573	7	0	1	0	0	576	21	409	0	N.A.	N.A.	538	5
P.H.O.L. - Ottawa	13	0	3	0	3	0	13	0	13	0	0	0	0	0	13	0	13	0	13	3	13	0
CHEO - Ottawa	216	0	0	3	3	4	216	10	35	0	0	0	0	0	35	1	35	0	35	6	34	1
P.H.O.L. - Kingston	14	0	0	0	0	0	14	0	14	0	0	0	0	0	14	1	14	0	14	1	14	0
UHN / Mount Sinai Hospital	297	0	0	3	3	0	297	1	22	0	0	0	0	0	0	0	22	0	0	0	N.A.	N.A.
P.H.O.L. - Toronto	321	1	6	0	7	1	318	9	319	0	0	0	0	0	319	2	312	4	319	39	312	0
Sick Kids Hospital - Toronto	49	0	0	0	0	0	49	8	49	2	2	0	2	0	49	0	49	1	49	10	49	1
Sunnybrook & Women's College HSC	49	0	0	0	0	0	49	0	49	0	0	0	0	0	49	0	49	0	49	4	49	0
P.H.O.L. - Sault Ste. Marie	11	0	0	0	0	0	11	0	11	0	0	0	0	0	11	0	11	0	11	0	11	0
P.H.O.L. - Timmins	5	0	0	0	0	0	5	0	5	0	0	0	0	0	5	0	5	0	5	0	5	0
St. Joseph's - London	90	1	0	0	1	0	90	2	33	2	0	0	0	0	33	0	33	0	20	6	0	0
P.H.O.L. - London	106	1	1	0	2	0	105	6	105	0	0	0	0	0	105	4	105	0	105	17	105	0
P.H.O.L. - Orillia	29	0	0	0	0	0	29	1	29	0	0	0	0	0	29	1	29	0	29	6	29	0
P.H.O.L. - Thunder Bay	6	0	0	0	0	0	6	0	6	0	0	0	0	0	6	1	6	0	6	2	6	0
P.H.O.L. - Sudbury	7	0	0	0	0	0	6	0	6	0	0	0	0	0	6	0	6	0	6	0	6	0
P.H.O.L. - Hamilton	116	0	0	0	0	0	116	2	116	0	0	0	0	0	116	3	114	0	116	19	114	0
P.H.O.L. - Peterborough	20	0	0	0	0	0	20	0	20	0	0	0	0	0	20	1	20	1	20	2	20	0
Province of Ontario	1349	3	10	6	19	5	1344	39	832	4	2	0	2	0	810	14	823	6	797	115	767	2
Manitoba	235	0	1	2	3	7	235	9	111	1	0	0	0	0	111	3	81	0	111	22	81	0
Regina	160	0	0	9	9	1	160	0	99	12	0	1	0	0	99	6	99	1	99	20	99	2
Saskatoon	109	0	0	3	3	4	109	0	109	8	1	0	0	0	109	2	109	0	109	18	109	1
Saskatchewan	269	0	0	12	12	5	269	0	208	20	1	1	0	0	208	8	208	1	208	38	208	3
Alberta	752	16	15	19	50	41	602	0	602	21	1	1	4	0	602	18	602	8	602	114	602	3
Prairies	1256	16	16	33	65	53	1106	9	921	42	2	2	4	0	921	29	891	9	921	174	891	6
Province of British Columbia	741	1	3	9	27	3	740	22	246	17	3	0	2	3	246	3	246	6	237	69	196	3
Yukon	45	0	0	0	0	0	45	0	N.A.	N.A.	N.A.	N.A.	N.A.	N.A.	N.A.	N.A.	N.A.	N.A.	N.A.	N.A.	0	0
Northwest Territories	13	1	0	0	1	0	13	0	13	0	0	0	0	0	13	0	13	2	13	2	13	0
Nunavut	1	0	0	0	0	0	1	0	1	0	0	0	0	0	1	0	1	0	1	1	1	0
Territories	59	1	0	0	1	0	59	0	14	0	0	0	0	0	14	0	14	2	14	3	14	0
CANADA	5515	22	34	82	152	71	5326	121	2777	87	8	3	8	3	2758	71	2574	23	2160	390	2490	16

Specimens from Yukon (YT), Northwest Territories (NT) and Nunavut (NU) are sent to reference laboratories in other provinces and reported results reflect specimens identified as originating from YT, NT or NU.

Results from British Columbia comprise of specimens from the following sites: BC Children's and Women's Hospital, Children's and Women's Hospital Laboratory, Fraser Health Medical Microbiology Laboratory, Island Health, Providence Health Care, Powell River Hospital, St. Paul's Hospital, Vancouver General Hospital, Victoria General Hospital, Victoria Coastal Health, BCCDC Public Health Laboratory, Interior Health Authority sites and Northern Health Authority sites.

Delays in the reporting of data may cause data to change retrospectively.

For British Columbia, only data from subtyped influenza A specimens are included in the weekly number of influenza detections. The sum of A(H1N1)pdm09, A(H3), and A(UnS) positive results may not equal the sum of total Flu A positive results.

Table 2: Respiratory Virus Detections/Isolations for the period August 25, 2019 - November 16, 2019 (Reporting Weeks 201935-201946)

Reporting Laboratory	Flu Tested	A(H1N1)pdm09 Positive	A(H3) Positive	A(UnS) Positive	Total Flu A Positive	Total Flu B Positive	RSV Tested	RSV Positive	PIV Tested	PIV 1 Positive	PIV 2 Positive	PIV 3 Positive	PIV 4 Positive	Other PIV Positive	Adeno Tested	Adeno Positive	hMPV Tested	hMPV Positive	Entero/Rhino Tested	Entero/Rhino Positive	Coron Tested	Coron Positive
Newfoundland	777	0	9	2	11	1	777	1	777	28	0	3	0	0	777	20	777	1	777	195	N.A.	N.A.
Prince Edward Island	124	0	0	1	1	1	124	0	15	0	0	0	0	0	15	0	15	0	15	9	15	0
Nova Scotia	484	0	0	2	2	1	490	0	182	11	1	1	0	0	187	4	187	0	187	47	187	0
New Brunswick	1430	2	2	6	10	2	1371	6	583	24	0	0	2	0	583	21	583	0	583	157	583	0
Atlantic	2815	2	11	11	24	5	2762	7	1557	63	1	4	2	0	1562	45	1562	1	1562	408	785	0
Région Nord-Est	552	0	0	0	0	0	468	3	0	0	0	0	0	0	0	0	0	0	N.A.	N.A.	0	0
Québec-Chaudière-Appalaches	1188	0	0	7	7	1	1374	5	999	8	3	1	3	0	1025	27	843	2	N.A.	N.A.	848	1
Centre-du-Québec	1002	0	0	9	9	3	902	7	0	0	0	0	0	0	0	0	0	0	N.A.	N.A.	0	0
Montréal-Laval	7309	0	0	69	69	21	7354	117	5097	68	2	5	6	0	5097	203	4705	11	N.A.	N.A.	5015	22
Ouest du Québec	1503	0	0	68	68	2	1481	29	0	0	0	0	0	0	0	0	0	0	N.A.	N.A.	0	0
Montérégie	1104	0	0	17	17	1	1102	37	0	0	0	0	0	0	0	0	0	0	N.A.	N.A.	0	0
Province of Québec	12658	0	0	170	170	28	12681	198	6096	76	5	6	9	0	6122	230	5548	13	N.A.	N.A.	5863	23
P.H.O.L. - Ottawa	225	0	7	0	7	0	223	1	198	2	0	0	0	0	198	1	194	0	42	10	37	0
CHEO - Ottawa	1476	0	0	11	11	6	1476	36	306	1	0	3	6	0	306	6	306	0	309	89	298	1
P.H.O.L. - Kingston	219	0	1	0	1	0	219	1	215	1	0	0	0	0	215	5	212	0	46	10	39	0
UHN / Mount Sinai Hospital	2511	0	0	13	13	7	2511	20	198	2	0	6	2	0	0	0	198	5	0	0	N.A.	N.A.
P.H.O.L. - Toronto	3388	7	24	0	31	5	3385	30	3305	34	0	3	0	0	3305	24	3212	15	761	82	648	0
Sick Kids Hospital - Toronto	503	0	1	0	1	1	503	19	503	14	4	1	6	0	503	7	503	7	503	171	503	3
Sunnybrook & Women's College HSC	169	0	0	0	0	0	169	0	169	3	0	0	0	0	169	2	169	0	169	13	169	0
P.H.O.L. - Sault Ste. Marie	70	0	0	0	0	0	70	0	70	1	0	0	0	0	70	0	69	0	19	0	18	0
P.H.O.L. - Timmins	39	0	0	0	0	0	39	0	39	0	0	0	0	0	39	0	39	0	11	0	9	0
St. Joseph's - London	349	1	0	0	1	0	349	7	243	9	1	0	1	0	243	4	243	1	192	49	171	0
P.H.O.L. - London	694	2	2	0	4	0	692	18	677	8	0	0	0	0	677	9	662	0	221	30	194	0
P.H.O.L. - Orillia	266	0	2	0	2	0	266	1	263	4	0	0	0	0	263	2	262	0	72	14	69	0
P.H.O.L. - Thunder Bay	69	0	0	0	0	0	67	0	67	0	0	1	0	0	67	1	60	0	19	4	11	0
P.H.O.L. - Sudbury	91	0	0	0	0	0	89	0	89	0	0	1	0	0	89	2	82	0	17	0	9	0
P.H.O.L. - Hamilton	864	1	5	0	6	1	857	11	834	10	1	0	0	0	834	7	822	1	239	43	223	0
P.H.O.L. - Peterborough	314	0	0	0	0	2	311	5	310	3	0	0	0	0	309	3	309	1	55	8	52	0
Province of Ontario	11247	11	42	24	77	22	11226	149	7486	92	6	15	15	0	7287	73	7342	30	2675	523	2450	4
Manitoba	2732	5	7	14	26	24	2732	25	1657	14	1	3	1	0	1657	32	858	3	1657	331	858	5
Regina	2407	0	0	36	36	3	2407	8	1337	28	0	1	6	0	1337	27	1230	2	1337	440	1337	2
Saskatoon	1431	0	0	11	11	5	1431	8	1431	53	4	3	1	0	1431	39	1434	1	1431	399	1431	4
Saskatchewan	3838	0	0	47	47	8	3838	16	2768	81	4	4	7	0	2768	66	2664	3	2768	839	2768	6
Alberta	7665	44	114	66	224	89	6585	0	6585	147	15	13	32	0	6585	126	6585	32	6585	1874	6585	26
Prairies	14235	49	121	127	297	121	13155	41	11010	242	20	20	40	0	11010	224	10107	38	11010	3044	10211	37
Province of British Columbia	5949	8	60	64	193	7	5884	78	2361	70	17	12	14	3	2361	17	2335	85	2111	617	2153	13
Yukon	476	0	8	3	11	0	476	0	N.A.	N.A.	N.A.	N.A.	N.A.	N.A.	N.A.	N.A.	N.A.	N.A.	N.A.	N.A.	N.A.	N.A.
Northwest Territories	142	4	0	1	5	0	138	0	138	0	0	1	0	0	138	3	138	5	138	67	138	1
Nunavut	30	0	0	0	0	0	28	0	28	0	3	0	0	0	28	4	28	0	28	14	28	0
Territories	648	4	8	4	16	0	642	0	166	0	3	1	0	0	166	7	166	5	166	81	166	1
CANADA	47552	74	242	400	777	183	46350	473	28676	543	52	58	80	3	28508	596	27060	172	17524	4673	21628	78

Specimens from YT, NT and NU are sent to reference laboratories in other provinces and reported results reflect specimens identified as originating from YT, NT or NU.

Results from British Columbia comprise of specimens from the following sites: BC Children's and Women's Hospital, Children's and Women's Hospital Laboratory, Fraser Health Medical Microbiology Laboratory, Island Health, Providence Health Care, Powell River Hospital, St. Paul's Hospital, Vancouver General Hospital, Victoria General Hospital, Victoria Coastal Health, BCCDC Public Health Laboratory, Interior Health Authority sites and Northern Health Authority sites.

Delays in the reporting of data may cause data to change retrospectively.

Due to reporting delays, the sum of weekly report totals do not add up to cumulative totals.

For BC, only data from subtyped influenza A specimens are included in the weekly number of influenza detections. The sum of A(H1N1)pdm09, A(H3), and A(UnS) positive results may not equal the sum of total Flu A positive results.

Figure 1: Number positive laboratory tests for other respiratory viruses by report week, Canada, 2019-2020

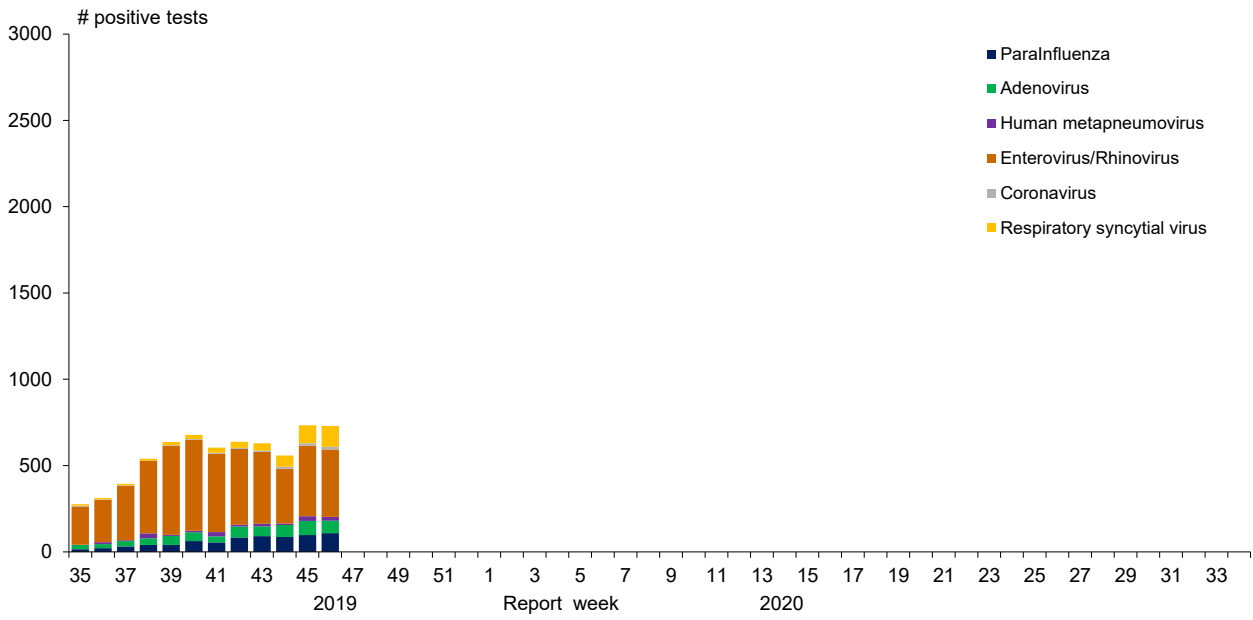


Figure 2: Positive Influenza Tests (%) in Canada by Region by Week of Report

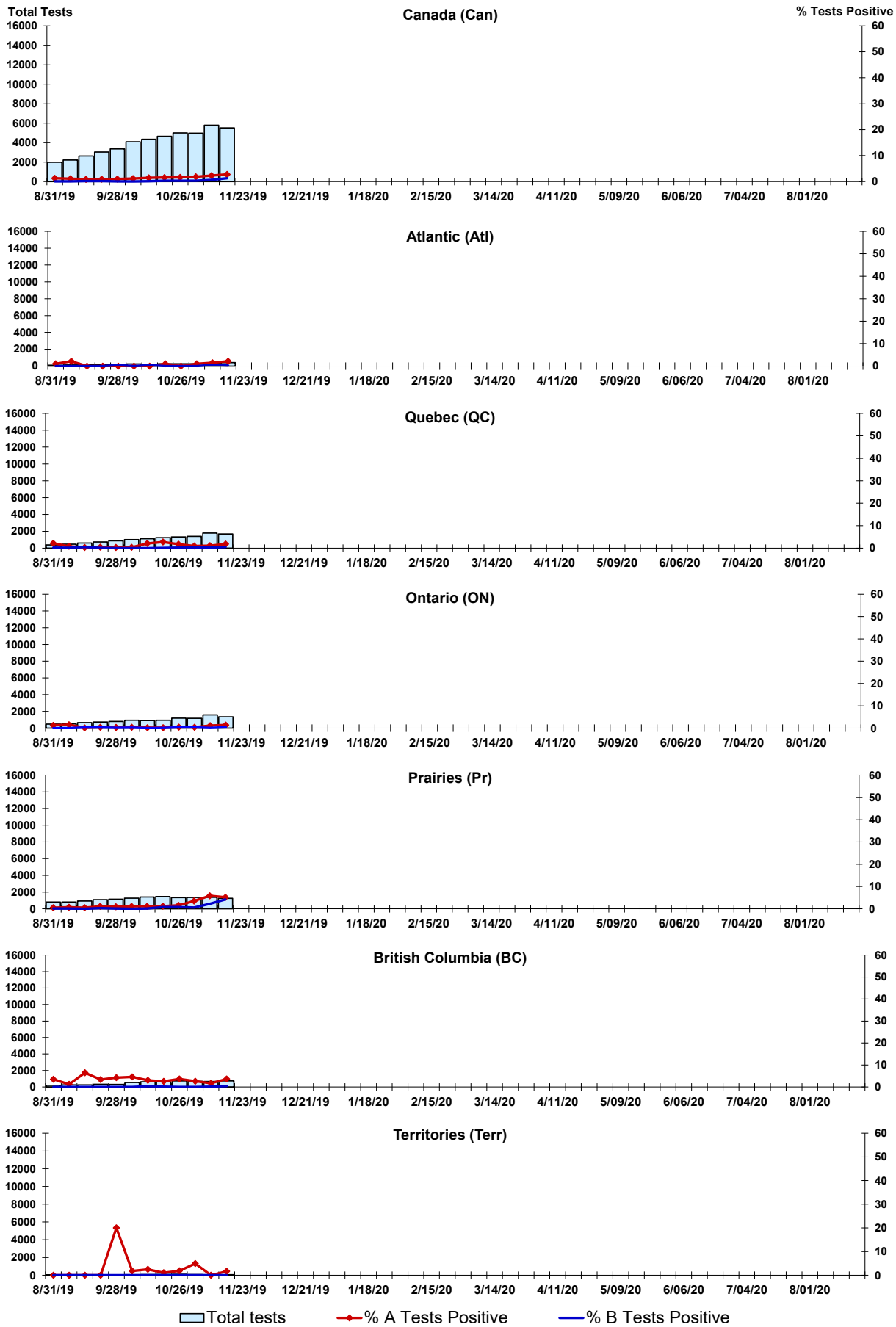


Figure 3: Positive Respiratory syncytial virus (RSV) Tests (%) in Canada by Region by Week of Report

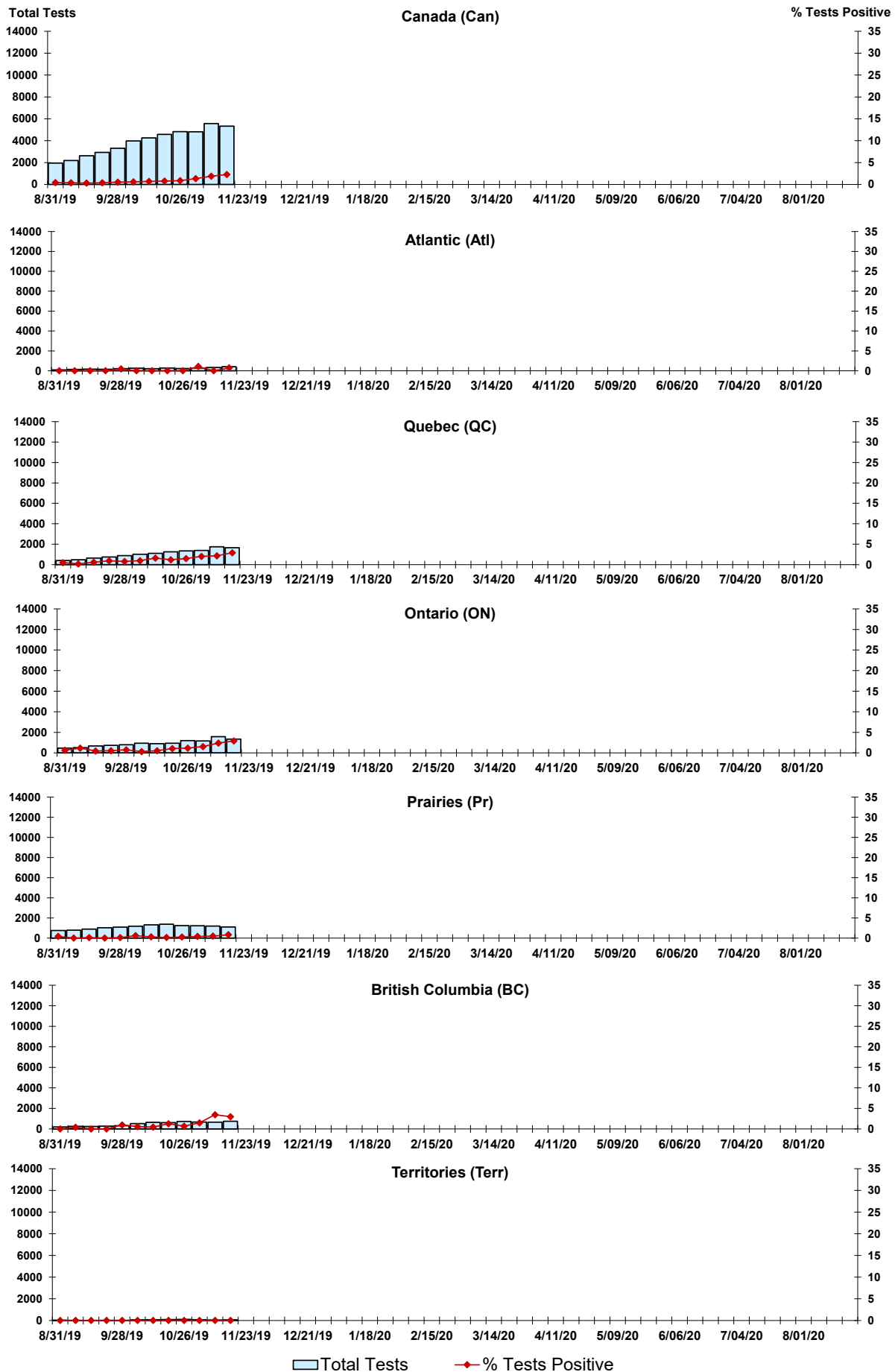


Figure 4: Positive Parainfluenza (PIV) Tests (%) in Canada by Region by Week of Report

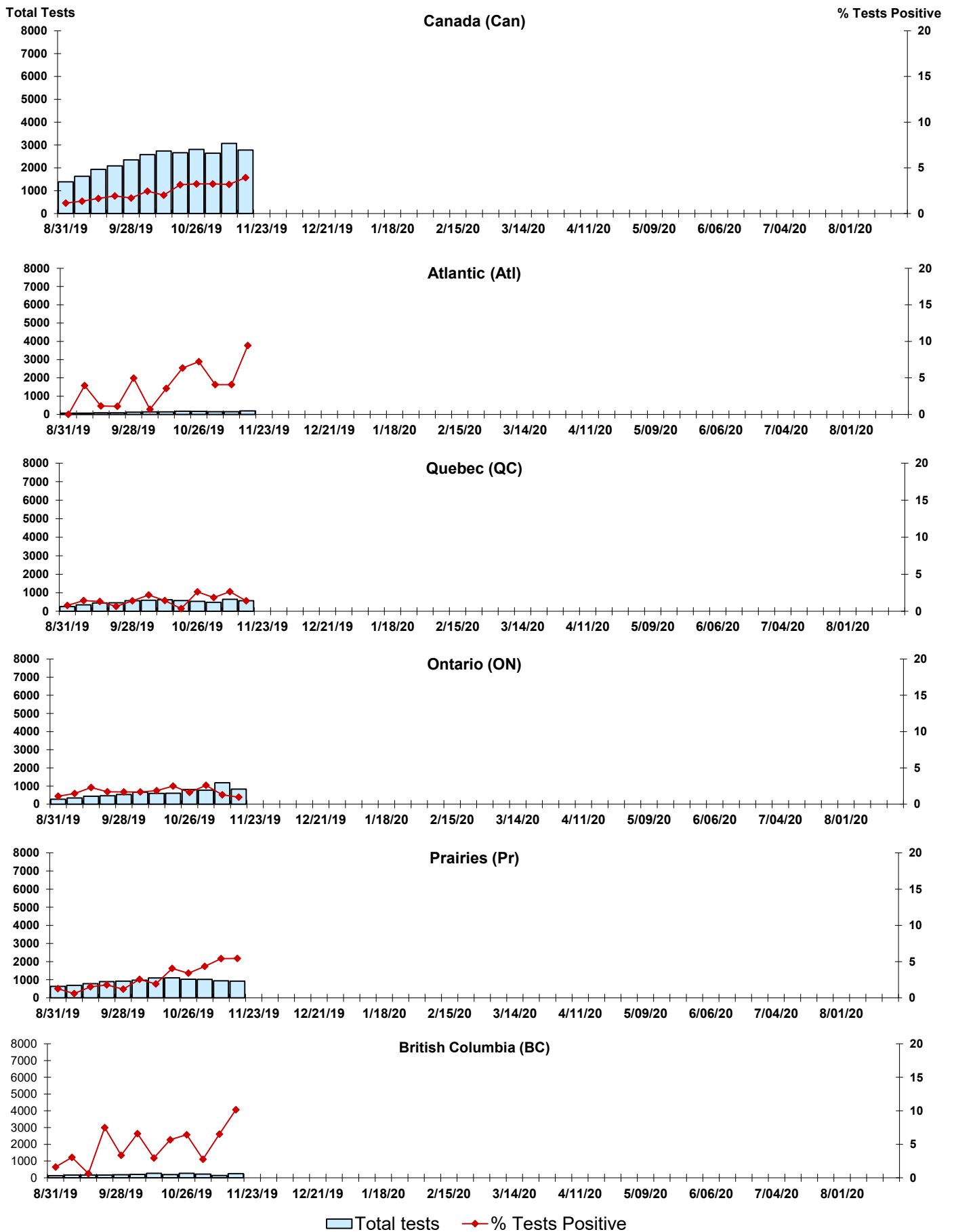


Figure 5: Positive Adenovirus (adeno) Tests (%) in Canada by Region by Week of Report

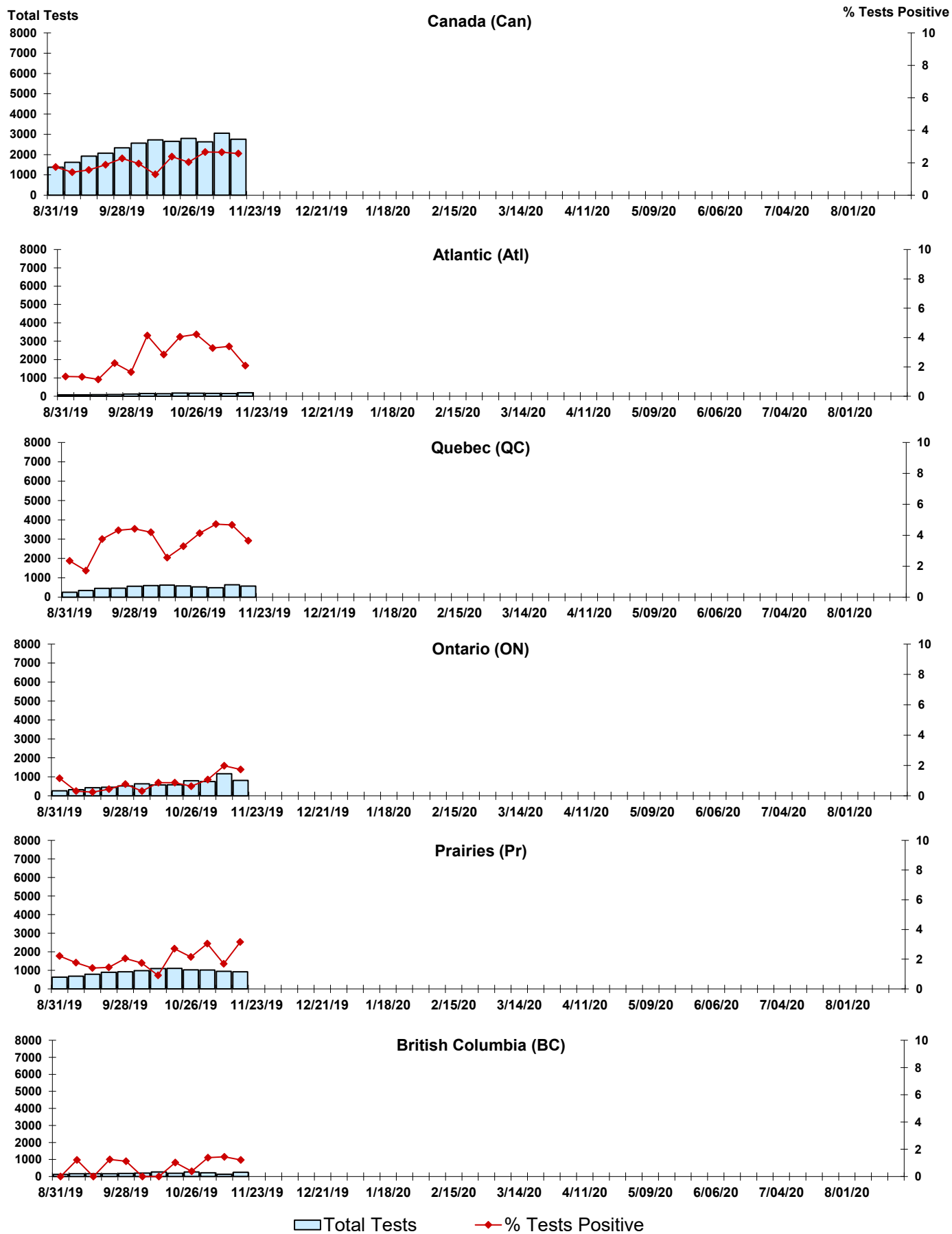


Figure 6: Positive human metapneumovirus (hMPV) Tests (%) in Canada by Region by Week of Report

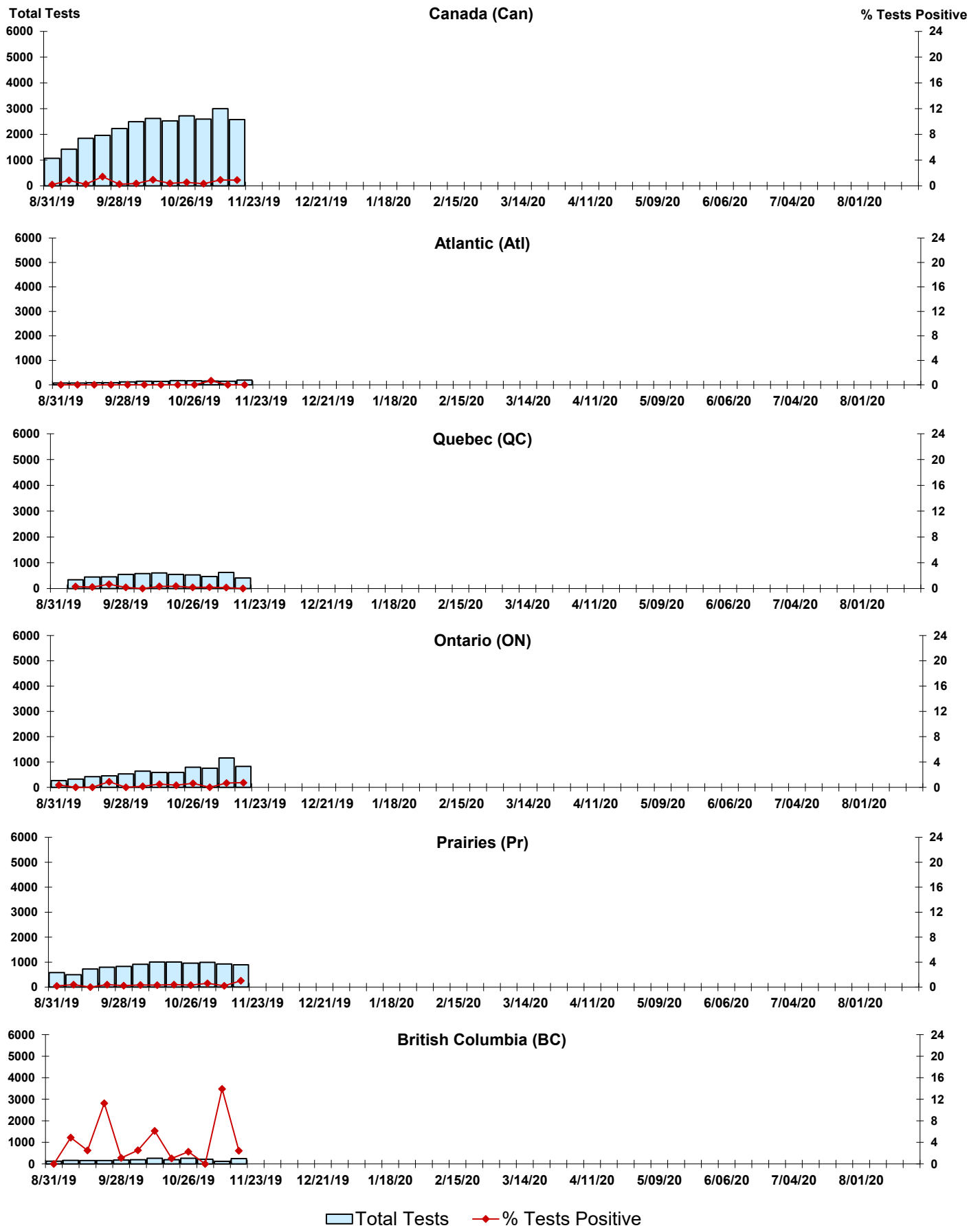


Figure 7: Positive Enterovirus/Rhinovirus (entero/rhino) Tests (%) in Canada by Region by Week of Report

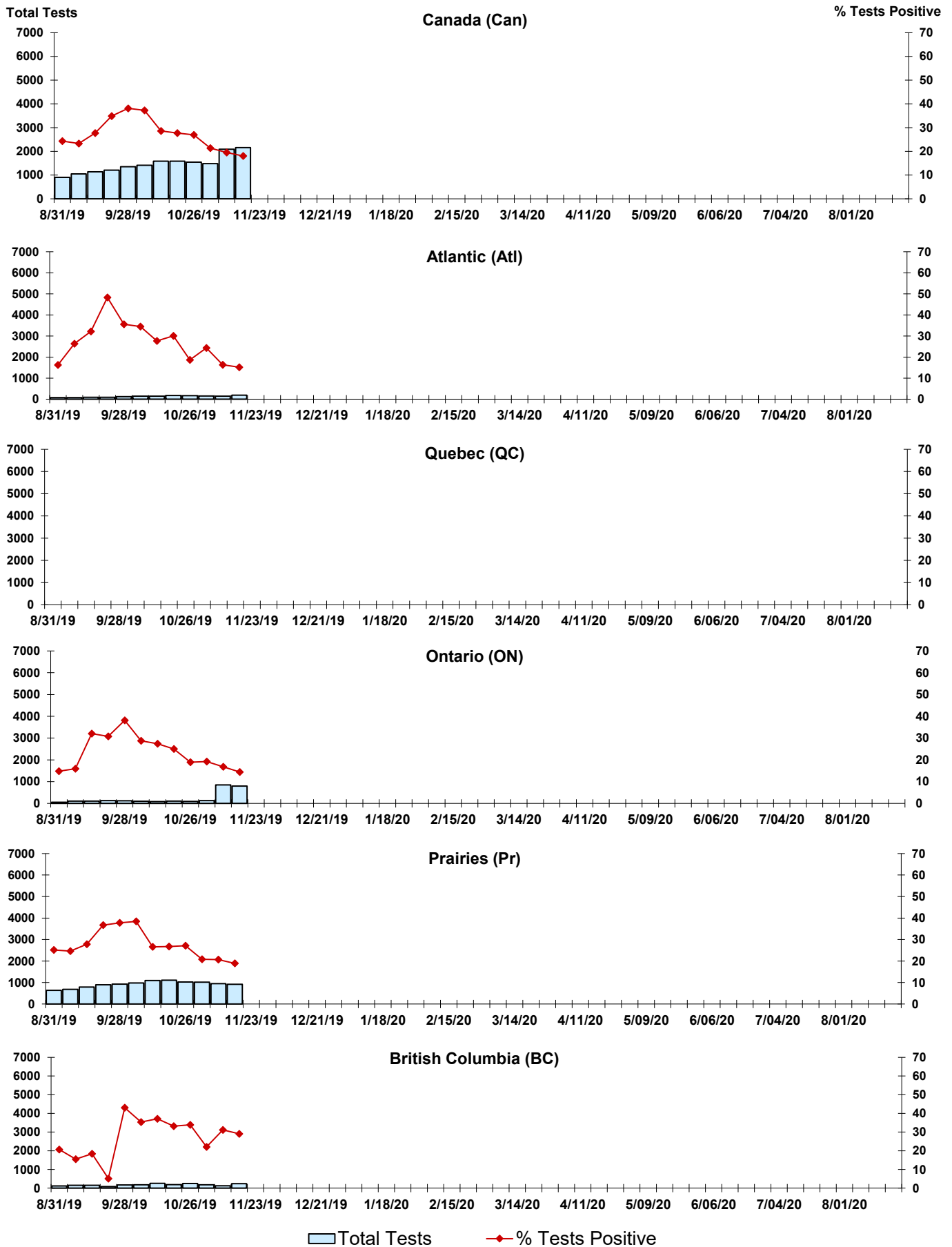
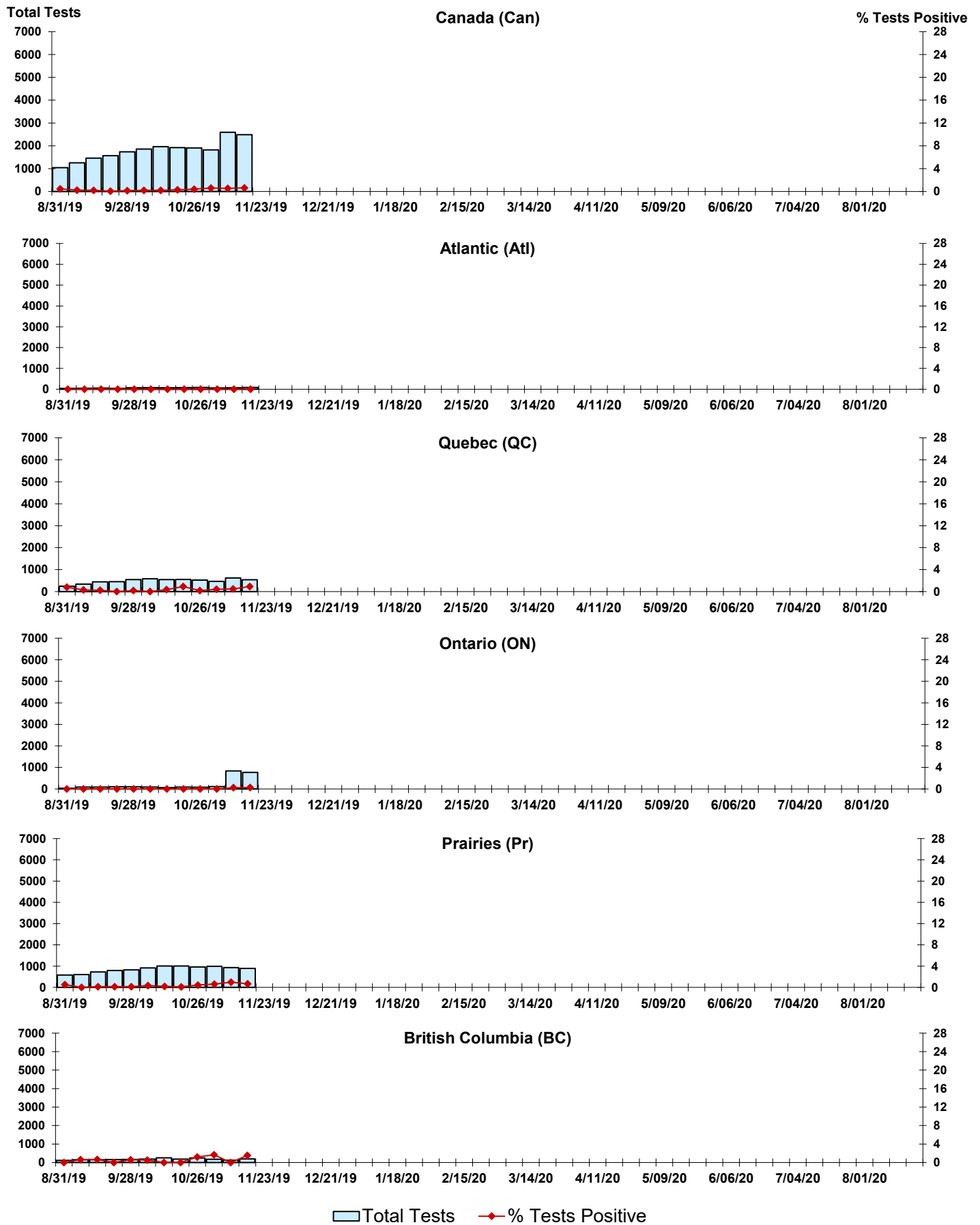


Figure 8: Positive Coronavirus (coron) Tests (%) in Canada by Region by Week of Report



Abbreviations:

A(H1N1)pdm09: Influenza A(H1N1)pdm09

A(H3): Influenza A(H3N2)

A (UnS): Influenza A (Unsubtyped)

Adeno: Adenovirus

CHEO: Children's Hospital of Eastern Ontario

Coron: Coronavirus

Entero: Enterovirus

hMPV: human metapneumovirus

HSC: Health Sciences Centre

N.A.: Not Applicable

P.H.O.L.: Public Health Ontario Laboratory

PIV: Parainfluenza

Rhino: Rhinovirus

RSV: Respiratory syncytial virus

UHN: University Health Network

Notes:

Specimens from Yukon (YT), Northwest Territories (NT) and Nunavut (NU) are sent to reference laboratories in other provinces. Results reported for the Territories reflect the number of specimens that are identified as originating from YT, NT or NU.

Delays in the reporting of data may cause data to change retrospectively.

Due to reporting delays, the sum of weekly report totals do not add up to cumulative totals.