

Respiratory Virus Detections in Canada

Respiratory Virus Report, Week 49 - ending December 7, 2019

The Respiratory Virus Detection Surveillance System collects data from select laboratories across Canada on the number of tests performed and the number of tests positive for influenza and other respiratory viruses. Data are reported on a weekly basis year-round to the Centre for Immunization and Respiratory Infectious Diseases (CIRID), Public Health Agency of Canada. These data are also summarized in the weekly FluWatch report.

Table 1: Respiratory Virus Detections/Isolations for the week ending December 7, 2019 (Reporting Week 201949)

Reporting Laboratory	Flu Tested	A(H1N1)pdm09 Positive	A(H3) Positive	A(UnS) Positive	Total Flu A Positive	Total Flu B Positive	RSV Tested	RSV Positive	PIV Tested	PIV 1 Positive	PIV 2 Positive	PIV 3 Positive	PIV 4 Positive	Other PIV Positive	Adeno Tested	Adeno Positive	hMPV Tested	hMPV Positive	Entero/Rhino Tested	Entero/Rhino Positive	Coron Tested	Coron Positive
Newfoundland	99	0	6	1	7	0	99	4	99	2	0	0	0	0	99	3	99	1	99	16	N.A.	N.A.
Prince Edward Island	20	0	0	0	0	0	20	0	1	0	0	0	0	0	1	0	1	0	1	0	1	0
Nova Scotia	80	0	0	0	0	0	81	2	17	0	0	0	0	0	17	0	17	0	17	4	17	0
New Brunswick	278	1	1	3	5	1	278	24	107	1	0	0	1	0	107	5	107	1	107	9	107	0
Atlantic	477	1	7	4	12	1	478	30	224	3	0	0	1	0	224	8	224	2	224	29	125	0
Région Nord-Est	146	0	0	2	2	1	117	2	0	0	0	0	0	0	0	0	0	0	N.A.	N.A.	0	0
Québec-Chaudière-Appalaches	339	0	0	2	2	2	357	10	83	2	0	0	2	0	84	5	73	0	N.A.	N.A.	73	1
Centre-du-Québec	475	0	0	36	36	19	436	20	0	0	0	0	0	0	0	0	0	0	N.A.	N.A.	0	0
Montréal-Laval	1252	0	0	82	82	42	1203	102	657	2	1	1	1	0	657	27	655	0	N.A.	N.A.	655	20
Ouest du Québec	344	0	0	20	20	35	303	26	0	0	0	0	0	0	0	0	0	0	N.A.	N.A.	0	0
Montérégie	276	0	0	19	19	1	276	23	0	0	0	0	0	0	0	0	0	0	N.A.	N.A.	0	0
Province of Québec	2832	0	0	161	161	100	2692	183	740	4	1	1	3	0	741	32	728	0	N.A.	N.A.	728	21
P.H.O.L. - Ottawa	50	0	3	0	3	5	50	2	50	0	0	0	0	0	50	3	50	0	50	9	50	0
CHEO - Ottawa	229	0	0	18	18	5	229	31	20	0	0	0	0	1	20	2	20	0	20	6	20	1
P.H.O.L. - Kingston	17	0	0	0	0	0	17	0	17	0	0	0	0	0	17	0	17	0	17	2	17	0
UHN / Mount Sinai Hospital	316	0	0	11	11	7	316	11	16	0	0	1	0	0	0	0	16	1	0	0	N.A.	N.A.
P.H.O.L. - Toronto	377	15	5	0	20	1	369	18	369	0	0	0	0	0	369	8	367	9	369	29	367	0
Sick Kids Hospital - Toronto	77	0	0	0	0	0	77	22	77	1	0	0	1	0	77	3	77	0	77	13	77	2
Sunnybrook & Women's College HSC	60	0	0	1	1	0	60	1	60	2	0	0	0	0	60	0	60	0	60	4	0	0
P.H.O.L. - Sault Ste. Marie	13	0	0	0	0	0	13	0	13	0	0	0	0	0	13	0	12	0	13	3	12	0
P.H.O.L. - Timmins	5	0	0	0	0	0	5	0	5	0	0	0	0	0	5	0	5	0	5	0	5	0
St. Joseph's - London	105	0	0	2	2	0	105	6	46	1	0	0	0	0	46	0	46	2	23	5	23	1
P.H.O.L. - London	101	1	2	0	3	0	100	14	100	0	0	0	0	0	100	3	100	1	100	15	100	0
P.H.O.L. - Orillia	37	0	0	0	0	1	37	0	37	0	0	0	0	0	37	0	37	0	37	4	37	0
P.H.O.L. - Thunder Bay	1	0	0	0	0	0	1	0	1	0	0	0	0	0	1	0	0	0	1	0	0	0
P.H.O.L. - Sudbury	12	0	0	0	0	0	12	0	12	0	0	0	0	0	12	0	12	1	12	0	12	0
P.H.O.L. - Hamilton	81	4	1	0	5	0	78	6	79	0	0	0	0	0	79	3	78	0	79	15	78	0
P.H.O.L. - Peterborough	21	1	0	0	1	0	21	0	21	0	0	0	0	0	21	1	21	0	21	3	21	0
St. Joseph's Healthcare - Hamilton	574	0	0	25	25	6	574	102	574	11	0	0	0	0	574	18	574	5	574	64	0	0
Province of Ontario	2076	21	11	57	89	25	2064	213	1497	15	1	1	1	1	1481	41	1492	19	1458	172	819	4
Manitoba	290	0	6	3	9	33	262	26	104	3	1	0	0	0	104	2	97	1	104	11	97	0
Regina	191	0	0	17	17	10	191	3	107	8	0	0	0	0	107	3	107	1	107	18	107	2
Saskatoon	167	0	0	11	11	11	167	4	167	8	1	0	1	0	167	5	167	0	167	25	167	2
Saskatchewan	358	0	0	28	28	21	358	7	274	16	1	0	1	0	274	8	274	1	274	43	274	4
Alberta	998	9	35	23	67	124	773	0	773	35	1	0	8	0	773	13	773	19	773	80	773	15
Prairies	1646	9	41	54	104	178	1393	33	1151	54	3	0	9	0	1151	23	1144	21	1151	134	1144	19
Province of British Columbia	860	2	1	14	42	11	764	39	247	9	2	0	1	0	247	4	247	7	229	34	171	0
Yukon	55	0	0	1	1	0	55	0	0	0	0	0	0	0	0	0	0	0	0	0	0	0
Northwest Territories	14	0	0	0	0	0	14	0	14	0	0	0	0	0	14	1	14	0	14	3	14	0
Nunavut	7	0	0	0	0	0	7	0	7	0	0	0	0	0	7	1	7	1	7	4	2	0
Territories	76	0	0	1	1	0	76	0	21	0	0	0	0	0	21	2	21	1	21	7	16	0
CANADA	7967	33	60	291	409	315	7467	498	3880	85	7	2	15	1	3865	110	3856	50	3083	376	3003	44

Specimens from Yukon (YT), Northwest Territories (NT) and Nunavut (NU) are sent to reference laboratories in other provinces and reported results reflect specimens identified as originating from YT, NT or NU.

Results from British Columbia comprise of specimens from the following sites: BC Children's and Women's Hospital, Children's and Women's Hospital Laboratory, Fraser Health Medical Microbiology Laboratory, Island Health, Providence Health Care, Powell River Hospital, St. Paul's Hospital, Vancouver General Hospital, Victoria General Hospital, Victoria Coastal Health, BCCDC Public Health Laboratory, Interior Health Authority sites and Northern Health Authority sites.

Delays in the reporting of data may cause data to change retrospectively.

For British Columbia, only data from subtyped influenza A specimens are included in the weekly number of influenza detections. The sum of A(H1N1)pdm09, A(H3), and A(UnS) positive results may not equal the sum of total Flu A positive results.

Table 2: Respiratory Virus Detections/Isolations for the period August 25, 2019 - December 7, 2019 (Reporting Weeks 201935-201949)

Reporting Laboratory	Flu Tested	A(H1N1)pdm09 Positive	A(H3) Positive	A(UnS) Positive	Total Flu A Positive	Total Flu B Positive	RSV Tested	RSV Positive	PIV Tested	PIV 1 Positive	PIV 2 Positive	PIV 3 Positive	PIV 4 Positive	Other PIV Positive	Adeno Tested	Adeno Positive	hMPV Tested	hMPV Positive	Entero/Rhino Tested	Entero/Rhino Positive	Coron Tested	Coron Positive
Newfoundland	1052	0	21	3	24	1	1052	8	1052	37	0	3	0	0	1052	30	1052	2	1052	230	N.A.	N.A.
Prince Edward Island	207	0	0	3	3	2	207	1	18	0	0	0	0	0	18	0	16	0	18	10	18	0
Nova Scotia	706	0	0	2	2	1	714	6	238	11	1	1	1	0	243	5	243	0	243	56	253	0
New Brunswick	2126	4	3	12	19	5	2067	50	835	28	2	0	4	0	835	33	835	1	835	184	835	0
Atlantic	4091	4	24	20	48	9	4040	65	2143	76	3	4	5	0	2148	68	2146	3	2148	480	1106	0
Région Nord-Est	956	0	0	5	5	2	783	10	0	0	0	0	0	0	0	0	0	0	N.A.	N.A.	0	0
Québec-Chaudière-Appalaches	2044	0	0	14	14	4	2287	36	1217	13	3	1	6	0	1244	42	1028	2	N.A.	N.A.	1033	2
Centre-du-Québec	2072	0	0	96	96	29	1836	42	0	0	0	0	0	0	0	0	0	0	N.A.	N.A.	0	0
Montréal-Laval	10699	0	0	265	265	106	10613	331	6985	87	4	6	8	0	6985	259	6575	19	N.A.	N.A.	6885	56
Ouest du Québec	2371	0	0	105	105	58	2295	89	0	0	0	0	0	0	0	0	0	0	N.A.	N.A.	0	0
Montérégie	1823	0	0	52	52	6	1821	89	0	0	0	0	0	0	0	0	0	0	N.A.	N.A.	0	0
Province of Québec	19965	0	0	537	537	205	19635	597	8202	100	7	7	14	0	8229	301	7603	21	N.A.	N.A.	7918	58
P.H.O.L. - Ottawa	318	0	14	0	14	6	316	5	291	2	0	0	0	0	291	4	284	0	135	27	127	0
CHEO - Ottawa	2149	0	0	35	35	23	2149	103	357	1	0	3	6	1	357	8	357	0	360	104	348	2
P.H.O.L. - Kingston	260	1	1	0	2	0	260	1	256	1	0	0	0	0	256	5	253	0	87	16	80	0
UHN / Mount Sinai Hospital	3395	0	0	33	33	16	3395	46	248	3	0	8	2	0	0	0	248	7	0	0	N.A.	N.A.
P.H.O.L. - Toronto	4367	34	39	0	73	10	4355	77	4273	34	0	3	0	0	4273	45	4163	32	1729	168	1599	0
Sick Kids Hospital - Toronto	693	6	1	0	7	2	693	54	693	18	5	1	12	0	693	14	693	7	693	203	693	6
Sunnybrook & Women's College HSC	301	0	0	3	3	0	301	3	301	5	0	0	0	0	301	2	301	1	301	18	120	0
P.H.O.L. - Sault Ste. Marie	103	0	0	0	0	0	103	0	103	1	0	0	0	0	103	0	101	0	52	3	50	0
P.H.O.L. - Timmins	60	0	0	0	0	0	60	0	60	0	0	0	0	0	60	0	60	0	32	0	30	0
St. Joseph's - London	714	0	0	6	6	0	714	27	386	11	1	0	3	0	386	4	386	4	260	67	239	2
P.H.O.L. - London	995	5	4	0	9	0	991	47	976	8	0	0	0	0	976	13	957	3	520	83	489	0
P.H.O.L. - Orillia	384	0	4	0	4	3	384	2	381	4	0	0	0	0	381	2	380	0	190	30	187	0
P.H.O.L. - Thunder Bay	91	0	0	0	0	1	89	0	89	0	0	1	0	0	89	1	80	0	41	8	31	0
P.H.O.L. - Sudbury	135	0	0	0	0	0	134	1	134	0	0	1	0	0	134	4	126	1	62	5	53	0
P.H.O.L. - Hamilton	1147	12	6	0	18	2	1137	28	1115	10	1	0	0	0	1115	14	1101	7	520	91	502	0
P.H.O.L. - Peterborough	380	2	0	0	2	2	377	8	376	3	0	0	0	0	375	4	375	3	121	23	118	0
St Joseph's Healthcare Hamilton	1558	0	0	63	63	13	1558	216	1558	51	2	1	0	0	1558	45	1558	11	1558	210	0	0
Province of Ontario	17050	60	69	140	269	78	17014	618	11597	152	9	18	23	1	11348	165	11423	76	6661	1056	4666	10
Manitoba	3617	7	26	19	52	91	3525	78	1980	19	2	3	2	0	1980	40	1147	12	1980	375	1147	6
Regina	2912	0	0	70	70	17	2912	12	1652	51	1	1	6	0	1652	35	1575	3	1652	504	1652	5
Saskatoon	1858	0	0	35	35	21	1858	15	1858	77	5	4	2	0	1858	48	1861	1	1858	458	1858	7
Saskatchewan	4770	0	0	105	105	38	4770	27	3510	128	6	5	8	0	3510	83	3436	4	3510	962	3510	12
Alberta	10504	86	221	128	435	393	8780	0	8780	213	19	15	58	0	8780	166	8780	76	8780	2162	8780	55
Prairies	18891	93	247	252	592	522	17075	105	14270	360	27	23	68	0	14270	289	13363	92	14270	3499	13437	73
Province of British Columbia	8408	23	80	78	254	35	8147	167	3287	107	27	16	17	7	3287	28	3261	102	2997	782	2841	19
Yukon	596	0	8	4	12	0	596	1	0	0	0	0	0	0	0	0	0	0	0	0	0	0
Northwest Territories	209	4	0	1	5	0	205	0	205	1	0	1	0	0	205	5	205	8	205	82	205	5
Nunavut	59	0	0	0	0	0	57	0	57	1	3	0	2	0	57	5	57	1	57	28	34	0
Territories	864	4	8	5	17	0	858	1	262	2	3	1	2	0	262	10	262	9	262	110	239	5
CANADA	69269	184	428	1032	1717	849	66769	1553	39761	797	76	69	129	8	39544	861	38058	303	26338	5927	30207	165

Specimens from YT, NT and NU are sent to reference laboratories in other provinces and reported results reflect specimens identified as originating from YT, NT or NU.

Results from British Columbia comprise of specimens from the following sites: BC Children's and Women's Hospital, Children's and Women's Hospital Laboratory, Fraser Health Medical Microbiology Laboratory, Island Health, Providence Health Care, Powell River Hospital, St. Paul's Hospital, Vancouver General Hospital, Victoria General Hospital, Victoria Coastal Health, BCCDC Public Health Laboratory, Interior Health Authority sites and Northern Health Authority sites.

Delays in the reporting of data may cause data to change retrospectively.

Due to reporting delays, the sum of weekly report totals do not add up to cumulative totals.

For BC, only data from subtyped influenza A specimens are included in the weekly number of influenza detections. The sum of A(H1N1)pdm09, A(H3), and A(UnS) positive results may not equal the sum of total Flu A positive results.

Figure 1: Number positive laboratory tests for other respiratory viruses by report week, Canada, 2019-2020

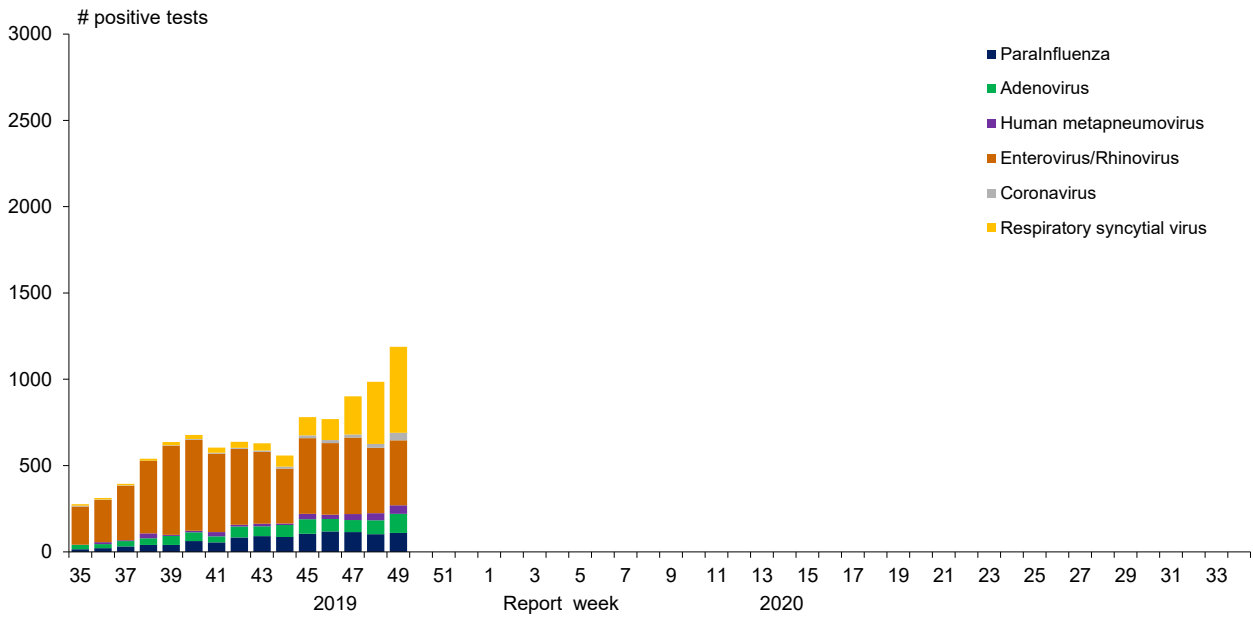


Figure 2: Positive Influenza Tests (%) in Canada by Region by Week of Report

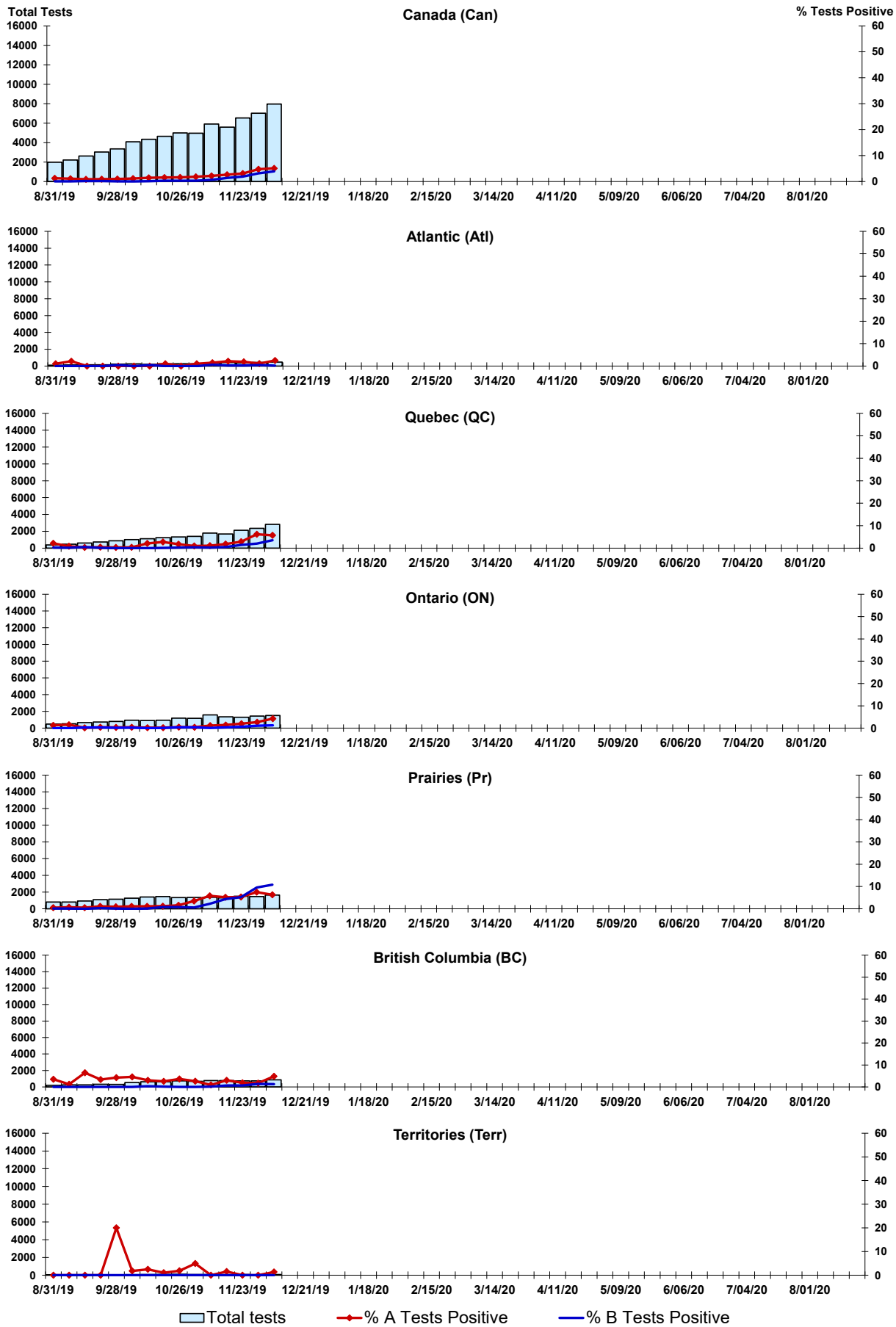


Figure 3: Positive Respiratory syncytial virus (RSV) Tests (%) in Canada by Region by Week of Report

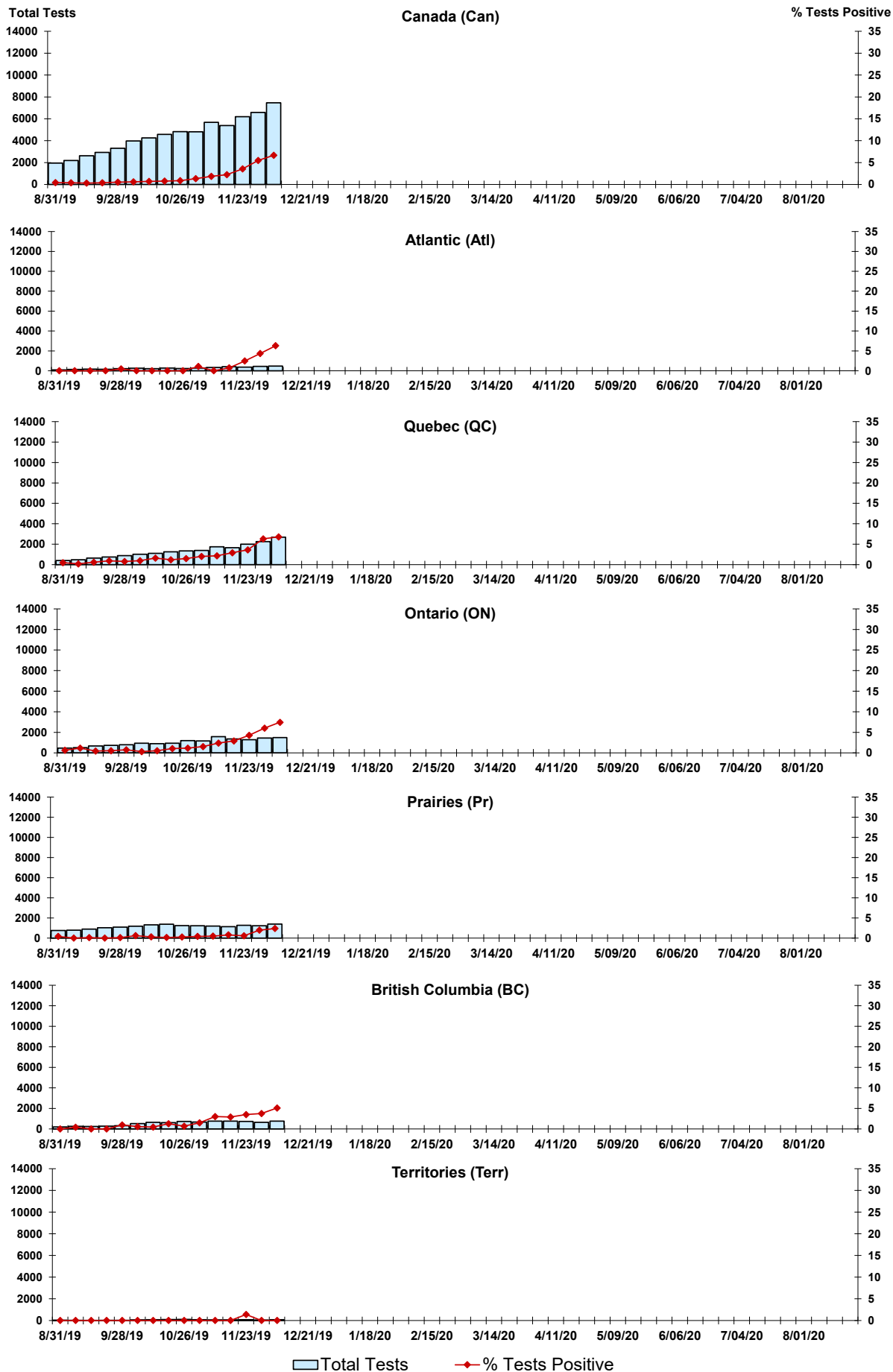


Figure 4: Positive Parainfluenza (PIV) Tests (%) in Canada by Region by Week of Report

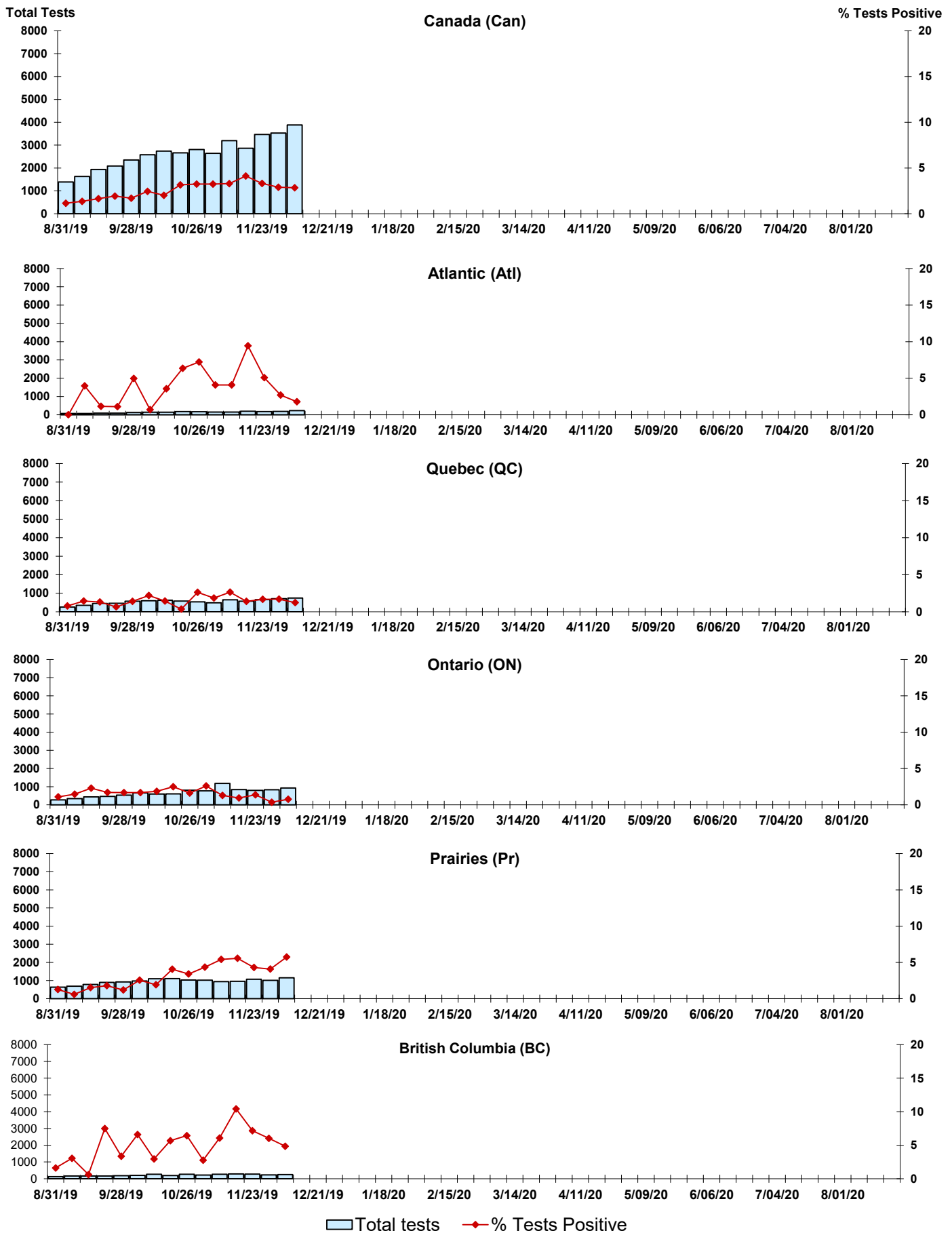


Figure 5: Positive Adenovirus (adeno) Tests (%) in Canada by Region by Week of Report

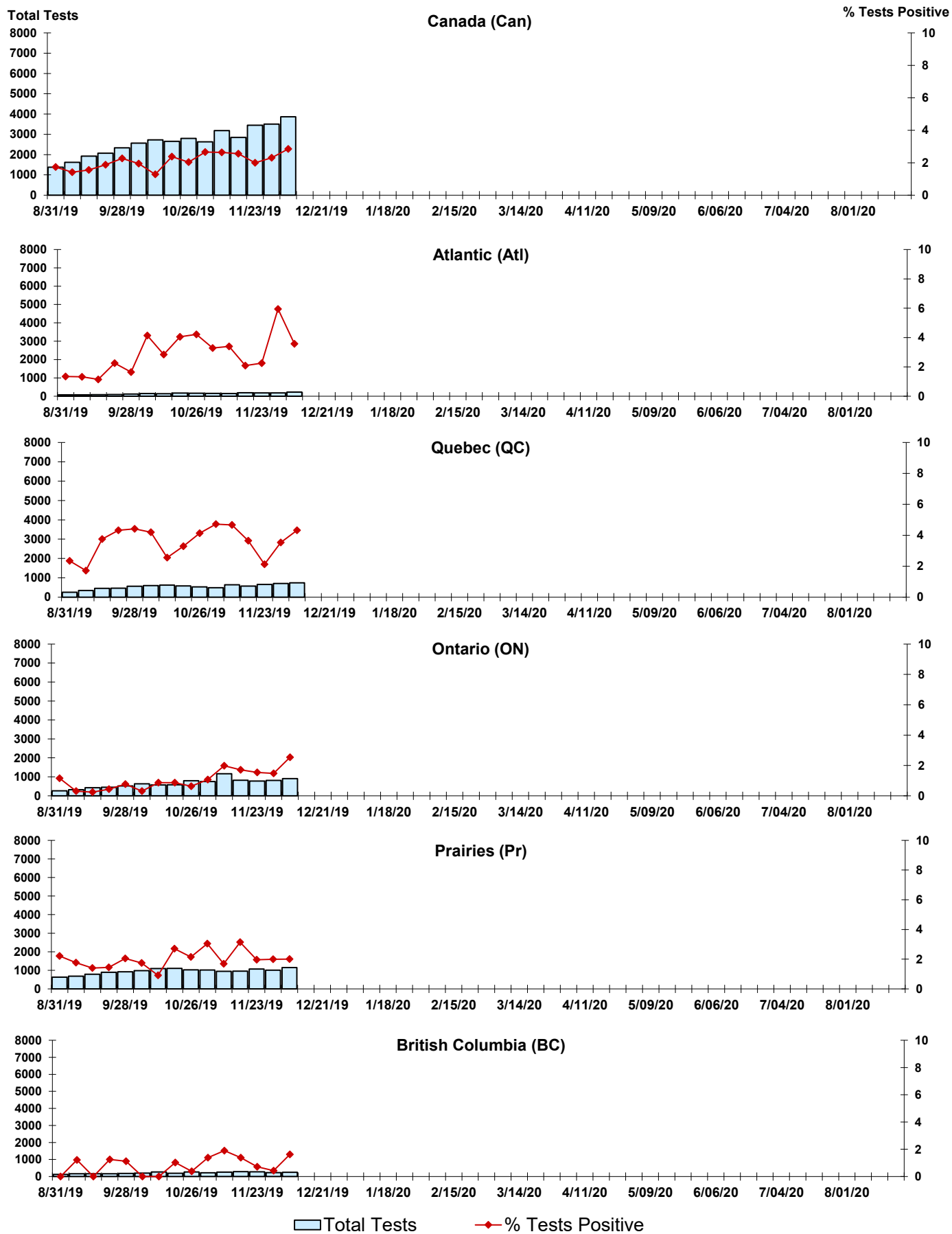


Figure 6: Positive human metapneumovirus (hMPV) Tests (%) in Canada by Region by Week of Report

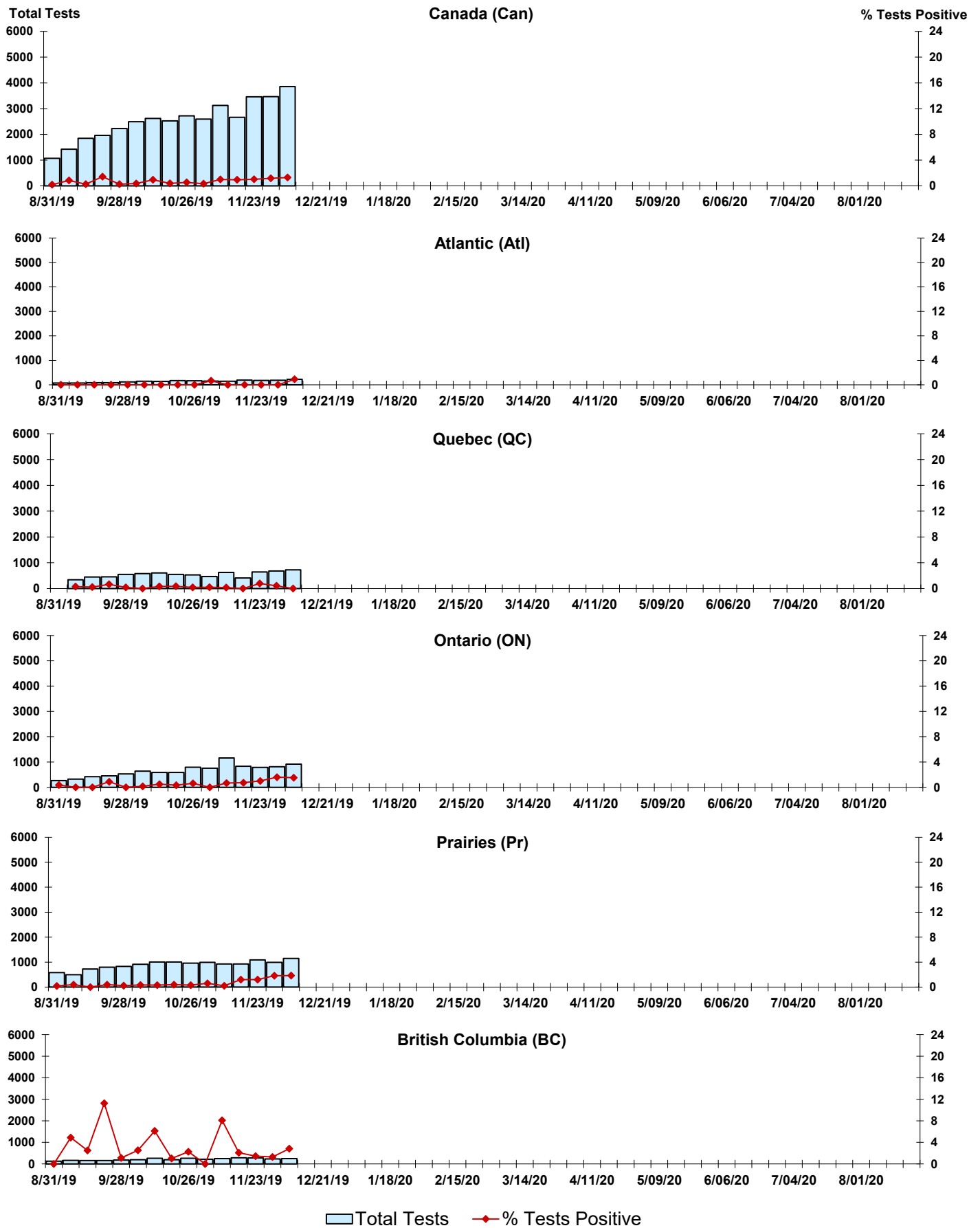


Figure 7: Positive Enterovirus/Rhinovirus (entero/rhino) Tests (%) in Canada by Region by Week of Report

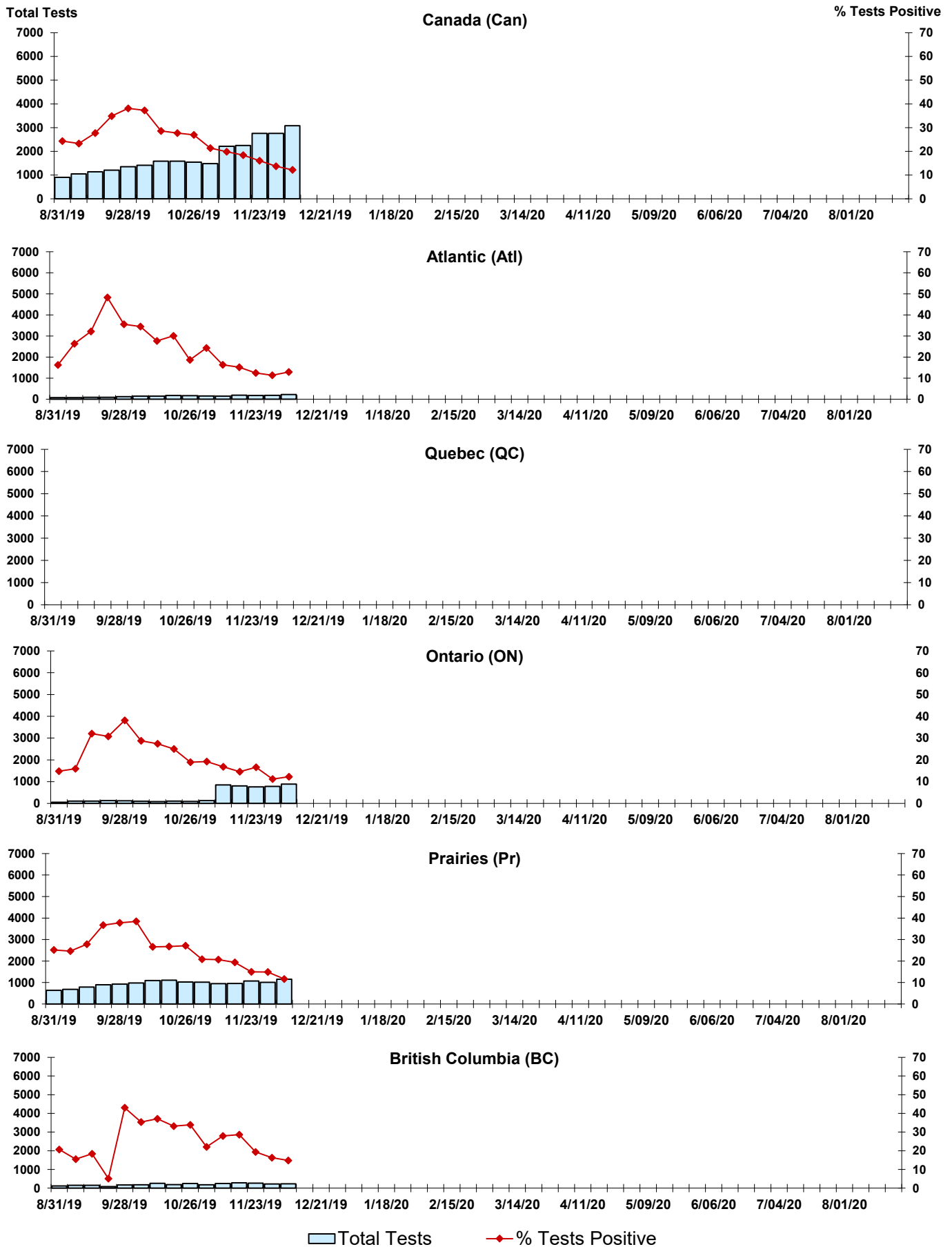
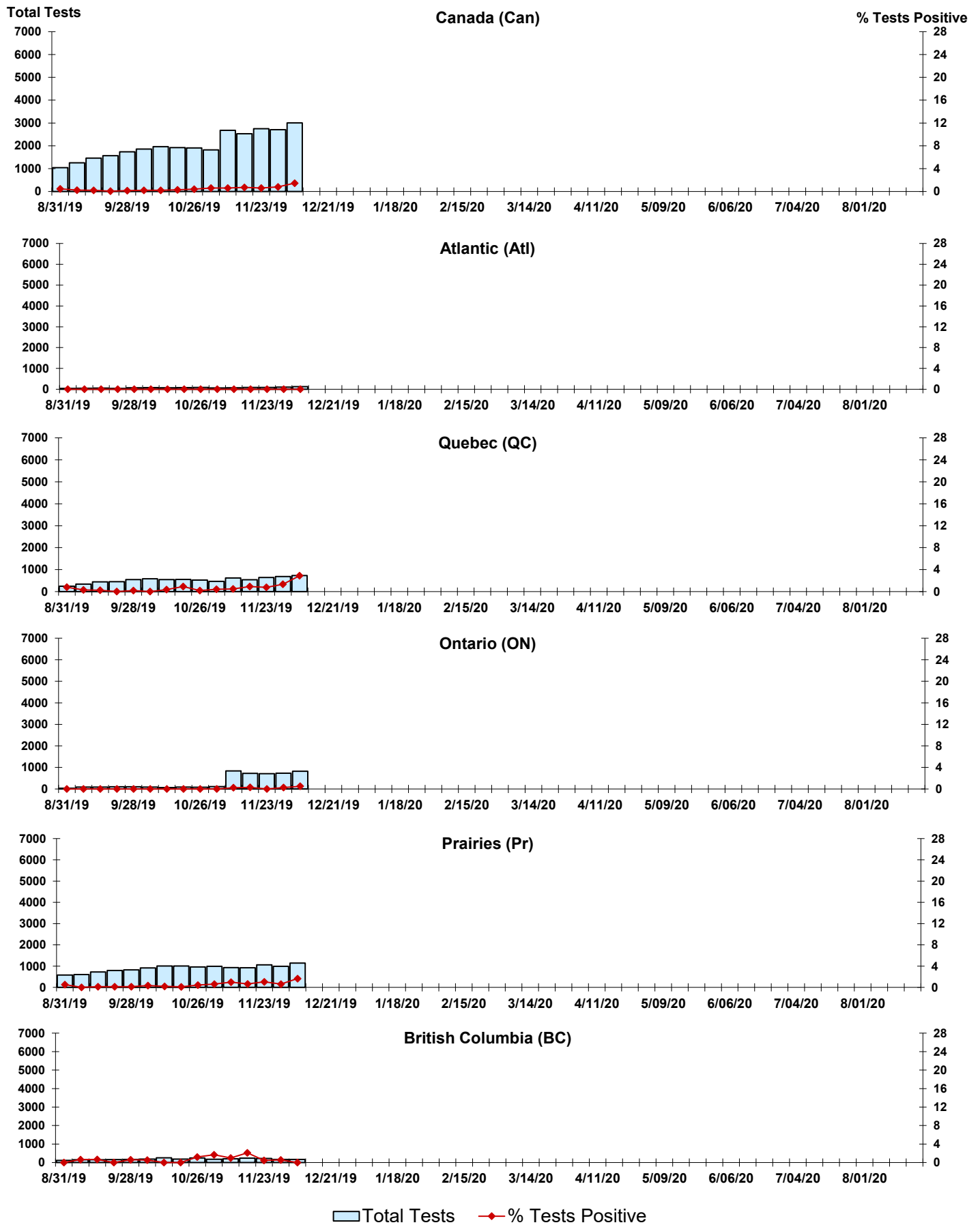


Figure 8: Positive Coronavirus (coron) Tests (%) in Canada by Region by Week of Report



Abbreviations:

A(H1N1)pdm09: Influenza A(H1N1)pdm09

A(H3): Influenza A(H3N2)

A (UnS): Influenza A (Unsubtyped)

Adeno: Adenovirus

CHEO: Children's Hospital of Eastern Ontario

Coron: Coronavirus

Entero: Enterovirus

hMPV: human metapneumovirus

HSC: Health Sciences Centre

N.A.: Not Applicable

P.H.O.L.: Public Health Ontario Laboratory

PIV: Parainfluenza

Rhino: Rhinovirus

RSV: Respiratory syncytial virus

UHN: University Health Network

Notes:

Specimens from Yukon (YT), Northwest Territories (NT) and Nunavut (NU) are sent to reference laboratories in other provinces. Results reported for the Territories reflect the number of specimens that are identified as originating from YT, NT or NU.

Delays in the reporting of data may cause data to change retrospectively.

Due to reporting delays, the sum of weekly report totals do not add up to cumulative totals.