

Respiratory Virus Report, Week 11 - ending March 14, 2020

The Respiratory Virus Detection Surveillance System collects data from select laboratories across Canada on the number of tests performed and the number of tests positive for influenza and other respiratory viruses. Data are reported on a weekly basis year-round to the Centre for Immunization and Respiratory Infectious Diseases (CIRID), Public Health Agency of Canada. These data are also summarized in the weekly FluWatch report.

Table 1: Respiratory Virus Detections/Isolations for the week ending March 14, 2020 (Reporting Week 202011)

Reporting Laboratory	Flu Tested	A(H1N1)pdm09 Positive	A(H3) Positive	A(UnS) Positive	Total Flu A Positive	Total Flu B Positive	RSV Tested	RSV Positive	PIV Tested	PIV 1 Positive	PIV 2 Positive	PIV 3 Positive	PIV 4 Positive	Other PIV Positive	Adeno Tested	Adeno Positive	hMPV Tested	hMPV Positive	Entero/Rhino Tested	Entero/Rhino Positive	Coron Tested	Coron Positive
Newfoundland	378	4	1	23	28	62	378	19	378	6	0	0	0	0	378	4	378	19	378	7	N.A.	N.A.
Prince Edward Island	78	0	0	19	19	4	78	17	2	0	0	0	0	0	2	0	2	0	2	0	2	0
Nova Scotia	295	0	0	31	31	22	297	35	4	0	0	0	0	0	28	0	28	1	28	0	28	1
New Brunswick	699	1	0	161	162	96	699	55	115	0	0	0	0	0	115	5	115	2	115	1	115	8
Atlantic	1450	5	1	234	240	184	1452	126	499	6	0	0	0	0	523	9	523	22	523	8	145	9
Région Nord-Est	655	0	0	112	112	37	552	75	0	0	0	0	0	0	0	0	0	0	N.A.	N.A.	0	0
Québec-Chaudière-Appalaches	696	0	0	125	125	29	713	59	47	0	0	0	0	0	51	0	24	6	N.A.	N.A.	22	1
Centre-du-Québec	923	0	0	125	125	23	741	64	0	0	0	0	0	0	0	0	0	0	N.A.	N.A.	0	0
Montréal-Laval	1569	0	0	139	139	26	1477	96	540	1	0	3	0	0	540	8	540	32	N.A.	N.A.	540	19
Ouest du Québec	490	0	0	58	58	9	439	61	0	0	0	0	0	0	0	0	0	0	N.A.	N.A.	0	0
Montérégie	365	0	0	38	38	14	264	16	0	0	0	0	0	0	0	0	0	0	N.A.	N.A.	0	0
Province of Québec	4698	0	0	597	597	138	4186	371	587	1	0	3	0	0	591	8	564	38	N.A.	N.A.	562	20
P.H.O.L. - Ottawa	37	4	2	0	6	1	37	5	37	0	0	0	0	0	37	0	37	2	37	1	37	0
CHEO - Ottawa	565	0	0	34	34	33	565	28	30	2	0	0	0	0	30	1	30	3	30	7	30	0
P.H.O.L. - Kingston	32	7	0	0	7	2	32	1	32	0	0	0	0	0	32	0	32	4	32	1	32	0
UHN / Mount Sinai Hospital	1085	0	0	13	13	24	1085	23	34	0	0	0	0	0	0	0	34	0	0	0	N.A.	N.A.
P.H.O.L. - Toronto	365	20	2	0	22	13	352	7	352	0	0	0	0	0	352	5	348	24	352	23	348	0
Sick Kids Hospital - Toronto	0	0	0	0	0	0	0	0	0	0	0	0	0	0	0	0	0	0	0	0	0	0
Sunnybrook & Women's College HSC	105	0	0	1	1	1	105	1	105	0	0	1	0	0	105	0	105	2	105	5	60	4
P.H.O.L. - Sault Ste. Marie	13	3	0	0	3	0	13	0	13	0	0	0	0	0	13	0	13	4	13	0	13	0
P.H.O.L. - Timmins	25	1	0	0	1	1	25	4	25	0	0	0	0	0	25	0	24	5	25	0	24	0
St. Joseph's - London	226	0	0	2	2	5	226	11	81	0	0	0	1	0	81	2	81	3	35	3	35	2
P.H.O.L. - London	157	12	4	0	16	6	157	7	157	0	0	0	0	0	157	0	156	17	157	15	156	0
P.H.O.L. - Orillia	48	1	2	1	4	0	48	2	48	0	0	0	0	0	48	1	48	7	48	3	48	0
P.H.O.L. - Thunder Bay	32	10	3	1	14	0	32	3	32	0	0	0	0	0	32	0	32	2	32	0	32	0
P.H.O.L. - Sudbury	22	2	1	1	4	0	21	2	21	0	0	0	0	0	21	0	21	1	21	1	21	0
P.H.O.L. - Hamilton	172	15	0	2	17	5	167	10	167	0	0	0	0	0	167	1	167	12	167	20	167	0
P.H.O.L. - Peterborough	43	0	0	1	1	1	43	4	43	0	0	0	0	0	43	1	43	0	43	8	43	0
St. Joseph's - Hamilton	1065	0	0	69	69	66	1065	24	1065	0	0	3	0	0	1065	13	1065	55	1065	97	0	0
Province of Ontario	3992	75	14	125	214	158	3973	132	2242	2	0	4	1	0	2208	24	2236	141	2162	184	1046	6
Manitoba	0	0	0	0	0	0	0	0	0	0	0	0	0	0	0	0	0	0	0	0	0	0
Regina	971	0	0	85	85	29	971	129	282	4	1	0	1	0	282	6	282	22	282	28	282	12
Saskatoon	0	0	0	0	0	0	0	0	0	0	0	0	0	0	0	0	0	0	0	0	0	0
Province of Saskatchewan	971	0	0	85	85	29	971	129	282	4	1	0	1	0	282	6	282	22	282	28	282	12
Province of Alberta	3122	222	32	56	310	103	2780	0	2780	8	12	15	13	0	2780	38	2780	120	2780	393	2780	192
Prairies	4093	222	32	141	395	132	3751	129	3062	12	13	15	14	0	3062	44	3062	142	3062	421	3062	204
British Columbia	6538	0	1	279	630	305	6538	266	508	0	1	1	0	4	508	6	508	36	477	48	187	17
Yukon	770	0	0	8	8	8	770	5	N.A.	N.A.	N.A.	N.A.	N.A.	N.A.	N.A.	N.A.	N.A.	N.A.	N.A.	N.A.	N.A.	N.A.
Northwest Territories	54	6	1	0	7	18	54	0	54	1	0	1	0	0	54	0	54	3	54	8	54	1
Nunavut	21	0	0	3	3	2	21	3	21	1	0	0	0	0	21	0	21	0	21	2	3	1
Territories	845	6	1	11	18	28	845	8	75	2	0	1	0	0	75	0	75	3	75	10	57	2
CANADA	21616	308	49	1387	2094	945	20745	1032	6973	23	14	24	15	4	6967	91	6968	382	6299	671	5059	258

Specimens from Yukon (YT), Northwest Territories (NT) and Nunavut (NU) are sent to reference laboratories in other provinces and reported results reflect specimens identified as originating from YT, NT or NU. Results from British Columbia comprise of specimens from the following sites: BC Children's and Women's Hospital, Children's and Women's Hospital Laboratory, Fraser Health Medical Microbiology Laboratory, Island Health, Providence Health Care, Powell River Hospital, St. Paul's Hospital, Vancouver General Hospital, Victoria General Hospital, Victoria Coastal Health, BCCDC Public Health Laboratory, Interior Health Authority sites and Northern Health Authority sites. Delays in the reporting of data may cause data to change retrospectively.

For BC, only data from subtyped influenza A specimens are included in the weekly number of influenza detections and so the sum of A(H1N1)pdm09, A(H3), and A(UnS) positive results may not equal the sum of total Flu A positive results.

Table 2: Respiratory Virus Detections/Isolations for the period August 31, 2019 - March 14, 2020 (Reporting Weeks 201935-202011)

Reporting Laboratory	Flu Tested	A(H1N1)pdm09 Positive	A(H3) Positive	A(UnS) Positive	Total Flu A Positive	Total Flu B Positive	RSV Tested	RSV Positive	PIV Tested	PIV 1 Positive	PIV 2 Positive	PIV 3 Positive	PIV 4 Positive	Other PIV Positive	Adeno Tested	Adeno Positive	hMPV Tested	hMPV Positive	Entero/Rhino Tested	Entero/Rhino Positive	Coron Tested	Coron Positive
Newfoundland	3657	8	33	98	139	406	3657	258	3657	128	1	4	0	0	3657	86	3657	85	3657	305	N.A.	N.A.
Prince Edward Island	983	0	0	125	125	76	983	123	46	1	0	0	1	0	46	0	44	0	46	16	46	1
Nova Scotia	2978	3	2	149	154	187	3062	403	462	13	1	3	5	0	520	10	520	11	520	75	530	13
New Brunswick	9733	60	29	870	959	1250	9674	1036	2097	50	3	0	12	0	2097	61	2097	11	2097	275	2097	64
Atlantic	17351	71	64	1242	1377	1919	17376	1820	6262	192	5	7	18	0	6320	157	6318	107	6320	671	2673	78
Région Nord-Est	7997	0	0	1069	1069	1309	6795	574	0	0	0	0	0	0	0	0	0	0	N.A.	N.A.	0	0
Québec-Chaudière-Appalaches	13491	0	0	1853	1853	1819	13294	1305	2557	31	4	3	14	0	2607	79	2045	21	N.A.	N.A.	1992	34
Centre-du-Québec	17787	0	0	2844	2844	2386	14310	1321	0	0	0	0	0	0	0	0	0	0	N.A.	N.A.	0	0
Montréal-Laval	35307	0	0	3960	3960	2406	34174	2324	16298	144	4	33	13	0	16298	504	15835	257	N.A.	N.A.	16145	257
Ouest du Québec	11582	0	0	1714	1714	1276	10827	1058	0	0	0	0	0	0	0	0	0	0	N.A.	N.A.	0	0
Montérégie	8432	0	0	1125	1125	786	8236	607	0	0	0	0	0	0	0	0	0	0	N.A.	N.A.	0	0
Province of Québec	94596	0	0	12565	12565	9982	87636	7189	18855	175	8	36	27	0	18905	583	17880	278	N.A.	N.A.	18137	291
P.H.O.L. - Ottawa	1146	106	60	2	168	70	1137	70	1112	2	0	0	0	0	1112	14	1101	28	956	66	944	0
CHEO - Ottawa	7002	1	0	635	636	371	7002	634	773	15	0	4	10	5	773	16	773	17	776	153	764	21
P.H.O.L. - Kingston	752	62	20	2	84	17	737	52	733	1	0	0	0	0	733	16	725	40	564	52	552	0
UHN / Mount Sinai Hospital	10173	9	0	647	656	210	10173	336	512	7	2	10	2	0	0	0	510	10	0	0	N.A.	N.A.
P.H.O.L. - Toronto	13186	1335	140	36	1511	350	12735	378	12656	34	0	3	0	0	12656	136	12461	329	10112	704	9897	0
Sick Kids Hospital - Toronto	2078	103	13	99	215	167	1607	203	1607	26	5	5	27	0	1607	41	1607	38	1607	327	1607	75
Sunnybrook & Women's College HSC	1474	0	0	121	121	23	1474	44	1474	8	0	8	0	0	1215	5	1334	15	1334	46	180	4
P.H.O.L. - Sault Ste. Marie	351	18	0	0	18	8	351	20	351	1	0	0	0	0	351	4	349	20	300	13	298	0
P.H.O.L. - Timmins	298	62	3	2	67	11	267	15	269	0	0	0	0	0	269	0	266	18	241	3	236	0
St. Joseph's - London	3254	0	0	233	233	104	3254	314	1106	19	4	2	14	0	1106	21	1106	30	590	101	569	17
P.H.O.L. - London	3390	295	105	3	403	133	3362	214	3347	8	0	0	0	0	3347	42	3314	116	2891	246	2846	0
P.H.O.L. - Orillia	1191	79	31	3	113	32	1191	79	1188	4	0	0	0	0	1188	7	1184	35	997	67	991	0
P.H.O.L. - Thunder Bay	498	77	13	8	98	42	496	26	496	0	0	1	0	0	496	10	485	24	448	29	436	0
P.H.O.L. - Sudbury	525	28	13	5	46	15	519	40	519	0	0	1	0	0	519	9	509	10	447	22	436	0
P.H.O.L. - Hamilton	3449	284	35	9	328	114	3337	148	3318	10	1	0	0	0	3318	63	3299	95	2723	280	2700	0
P.H.O.L. - Peterborough	873	61	4	1	66	10	870	29	869	3	0	0	0	0	868	9	864	34	614	55	607	0
St. Joseph's - Hamilton	11508	0	0	1562	1562	710	11508	1134	11508	111	6	17	0	0	11508	222	11508	276	11508	858	0	0
Province of Ontario	61148	2520	437	3368	6325	2387	60020	3736	41838	249	18	51	53	5	41066	615	41395	1135	36108	3022	23063	117
Manitoba	11486	160	112	1103	1375	848	11100	783	3232	44	7	4	8	0	3232	53	2211	42	3232	463	2211	66
Regina	9794	43	26	1136	1205	643	9803	845	4443	148	11	6	27	0	4443	78	4366	180	4443	764	4443	143
Saskatoon	4455	0	0	318	318	235	4455	182	4519	98	12	6	7	0	4519	66	4522	27	4519	530	4519	45
Province of Saskatchewan	14249	43	26	1454	1523	878	14258	1027	8962	246	23	12	34	0	8962	144	8888	207	8962	1294	8962	188
Province of Alberta	34823	1558	1258	1346	4162	3288	27399	0	27399	459	68	59	190	0	27399	438	27399	964	27399	3875	27399	1001
Prairies	60558	1761	1396	3903	7060	5014	52757	1810	39593	749	98	75	232	0	39593	635	38498	1213	39593	5632	38572	1255
British Columbia	36165	275	243	1502	3572	2261	35824	2184	8161	181	55	37	46	40	8158	112	8132	462	7601	1421	6056	265
Yukon	2456	4	8	45	60	22	2456	8	N.A.	N.A.	N.A.	N.A.	N.A.	N.A.	N.A.	N.A.	N.A.	N.A.	N.A.	N.A.	N.A.	N.A.
Northwest Territories	835	74	13	1	88	128	824	0	824	13	0	9	13	0	824	16	824	61	824	132	824	53
Nunavut	416	5	12	40	57	40	413	22	413	18	3	1	4	0	413	15	413	2	413	86	119	6
Territories	3707	83	33	86	205	190	3693	30	1237	31	3	10	17	0	1237	31	1237	63	1237	218	943	59
CANADA	273525	4710	2173	22666	31104	21753	257306	16769	115946	1577	187	216	393	45	115279	2133	113460	3258	90859	10964	89444	2065

Specimens from YT, NT and NU are sent to reference laboratories in other provinces and reported results reflect specimens identified as originating from YT, NT or NU.

Results from British Columbia comprise of specimens from the following sites: BC Children's and Women's Hospital, Children's and Women's Hospital Laboratory, Fraser Health Medical Microbiology Laboratory, Island Health, Providence Health Care, Powell River Hospital, St. Paul's Hospital, Vancouver General Hospital, Victoria General Hospital, Victoria Coastal Health, BCCDC I

Delays in the reporting of data may cause data to change retrospectively. Due to reporting delays, the sum of weekly report totals do not add up to cumulative totals.

For BC, only data from subtyped influenza A specimens are included in the weekly number of influenza detections and so the sum of A(H1N1)pdm09, A(H3), and A(UnS) positive results may not equal the sum of total Flu A positive results.

Figure 1: Number positive laboratory tests for other respiratory viruses by report week, Canada, 2019-20

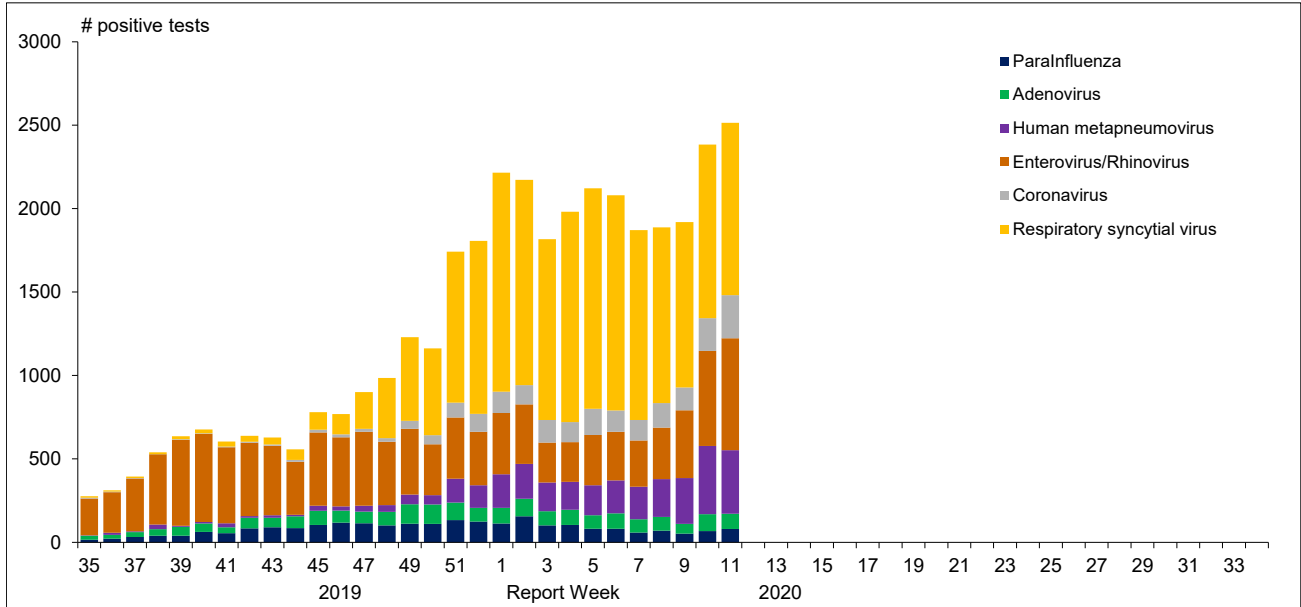


Figure 2: Positive Influenza Tests (%) in Canada by Region by Week of Report

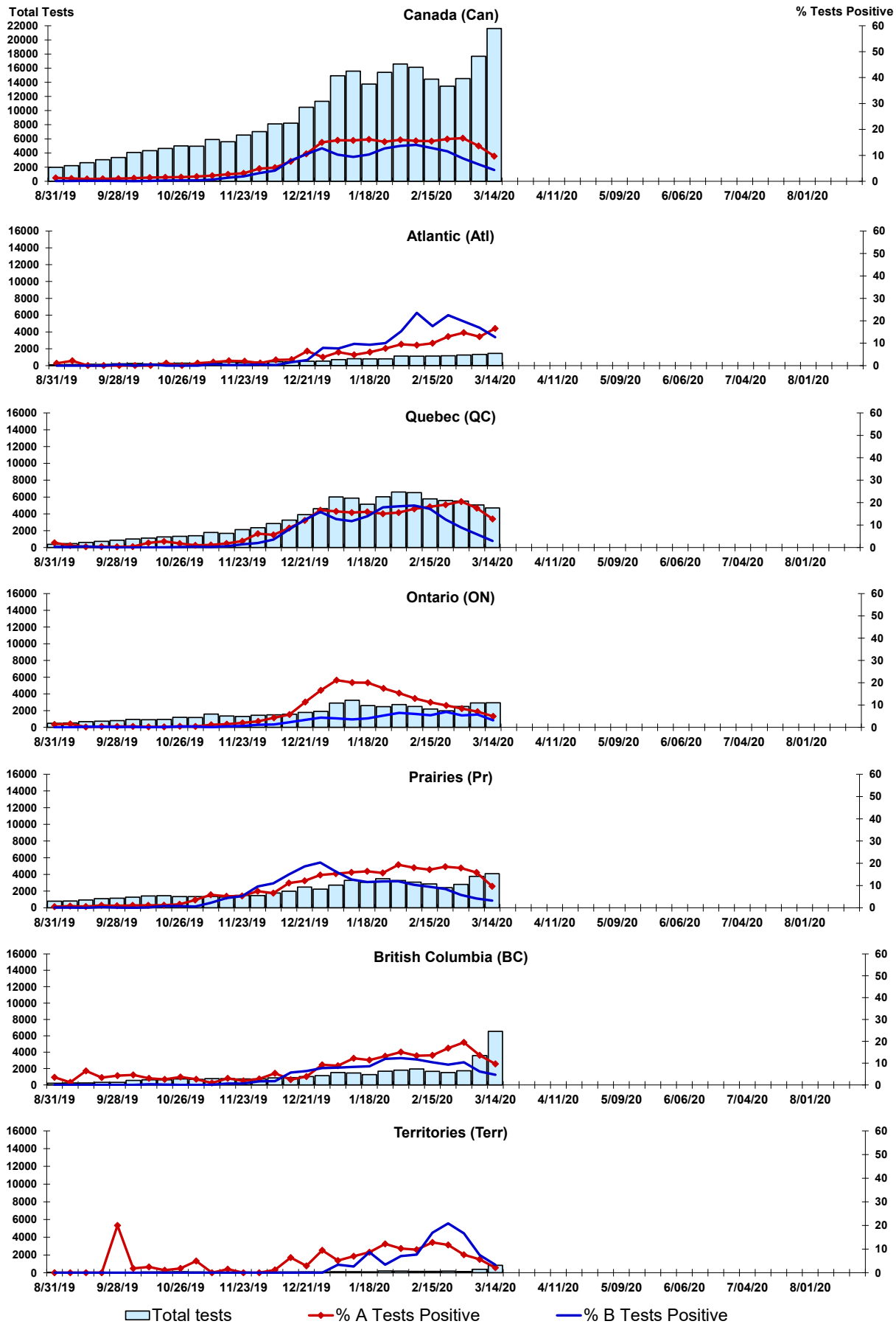


Figure 3: Positive Respiratory syncytial virus (RSV) Tests (%) in Canada by Region by Week of Report

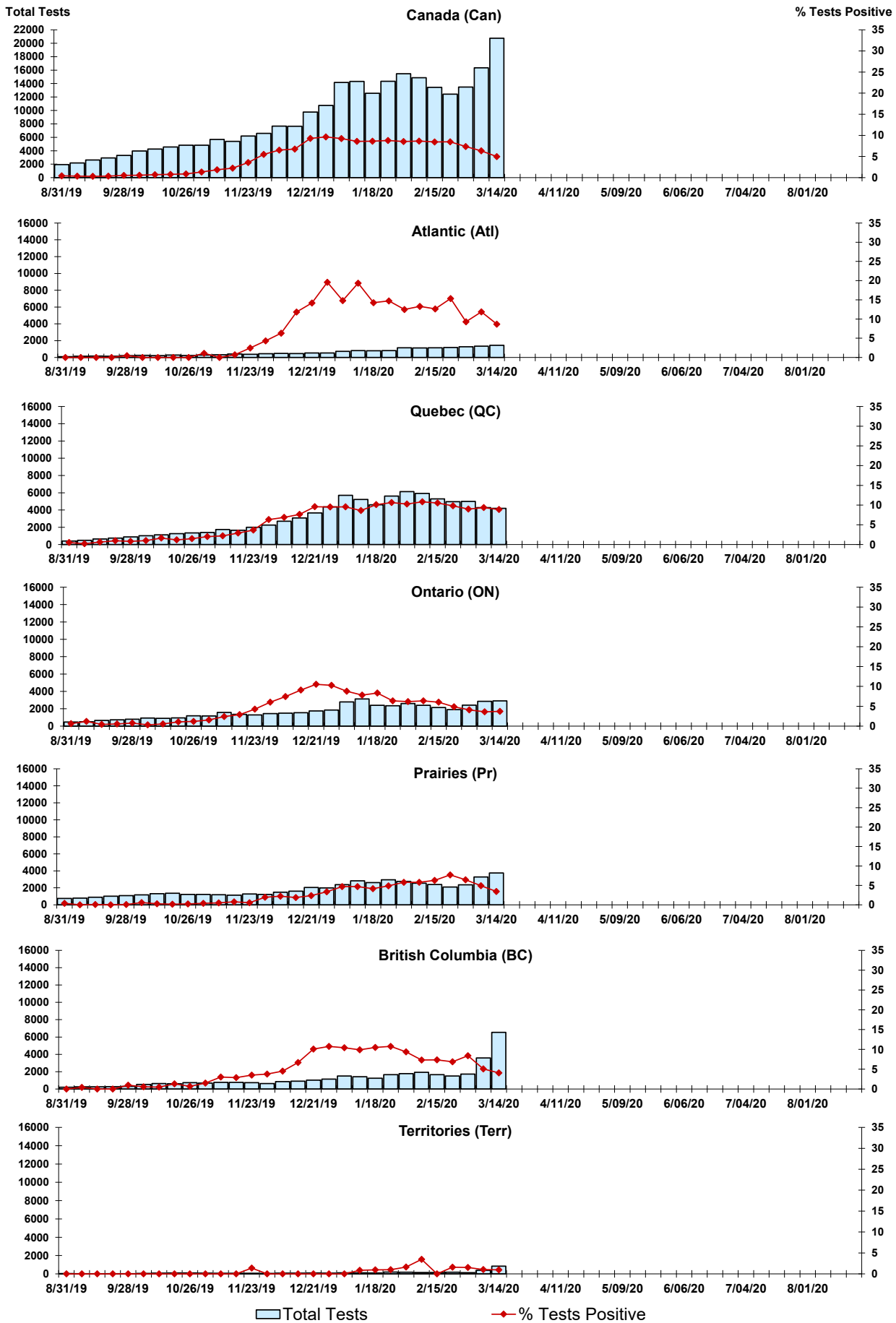


Figure 4: Positive Parainfluenza (PIV) Tests (%) in Canada by Region by Week of Report

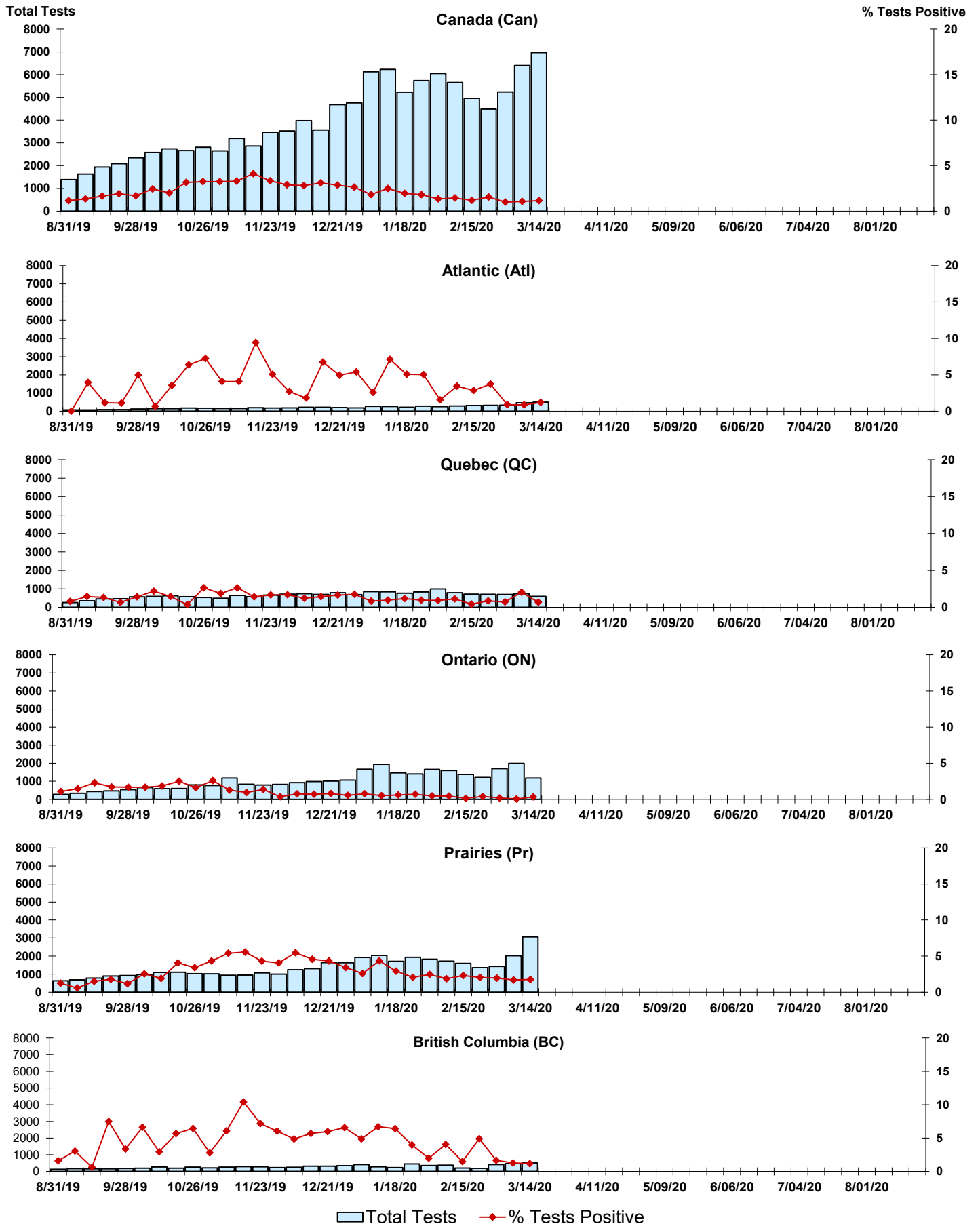


Figure 5: Positive Adenovirus (adeno) Tests (%) in Canada by Region by Week of Report

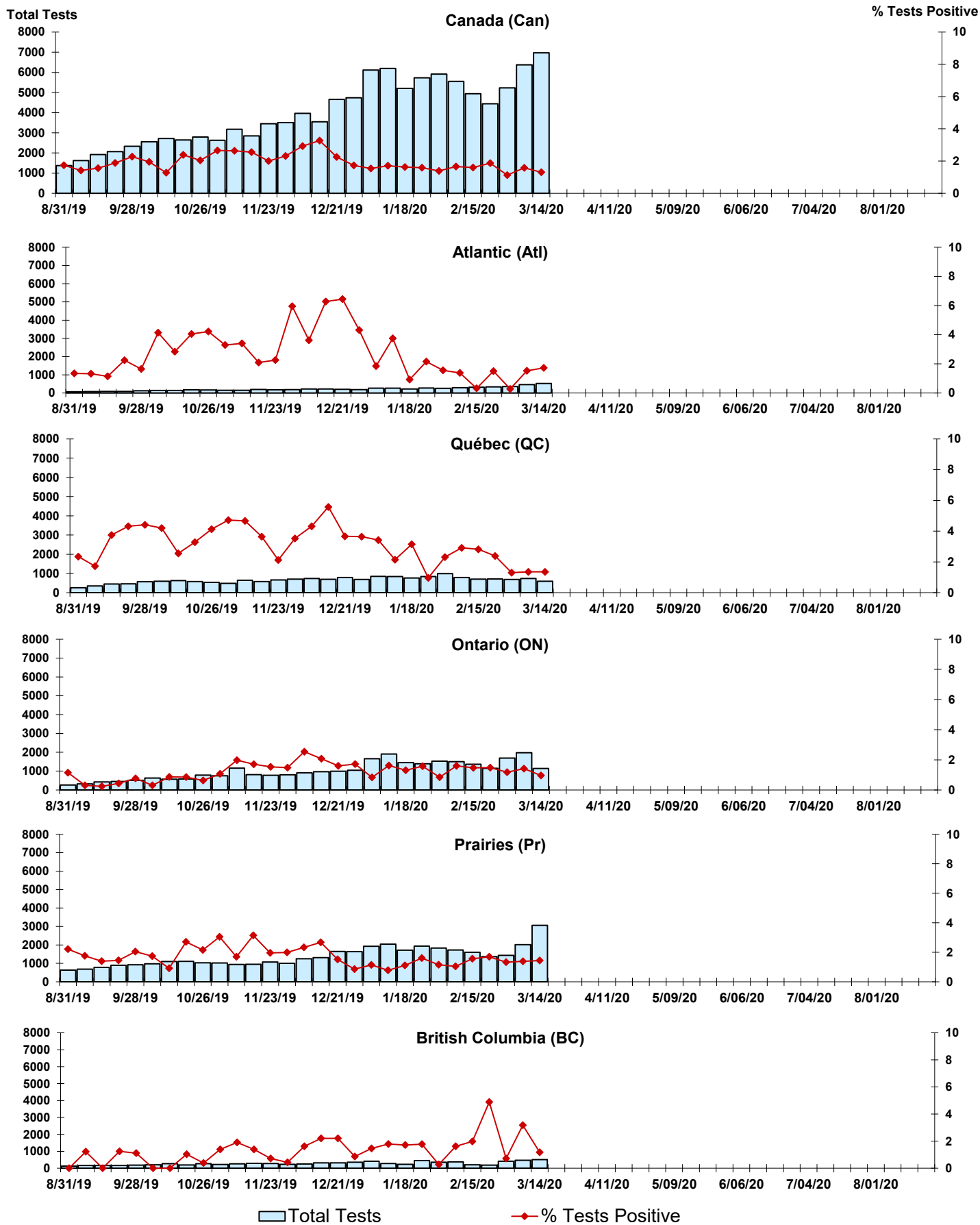


Figure 6: Positive human metapneumovirus (hMPV) Tests (%) in Canada by Region by Week of Report

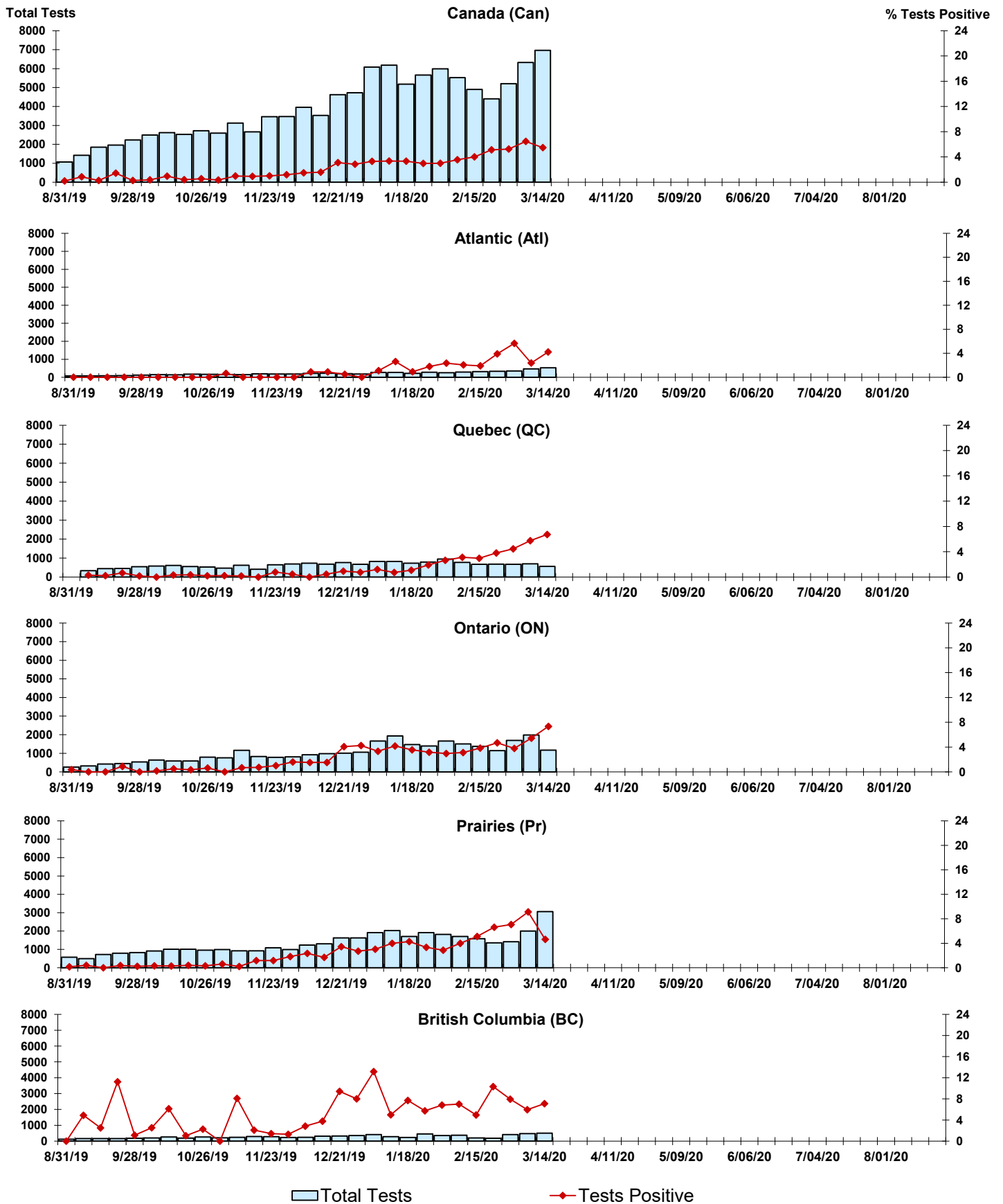


Figure 7: Positive Enterovirus/Rhinovirus (entero/rhino) Tests (%) in Canada by Region by Week of Report

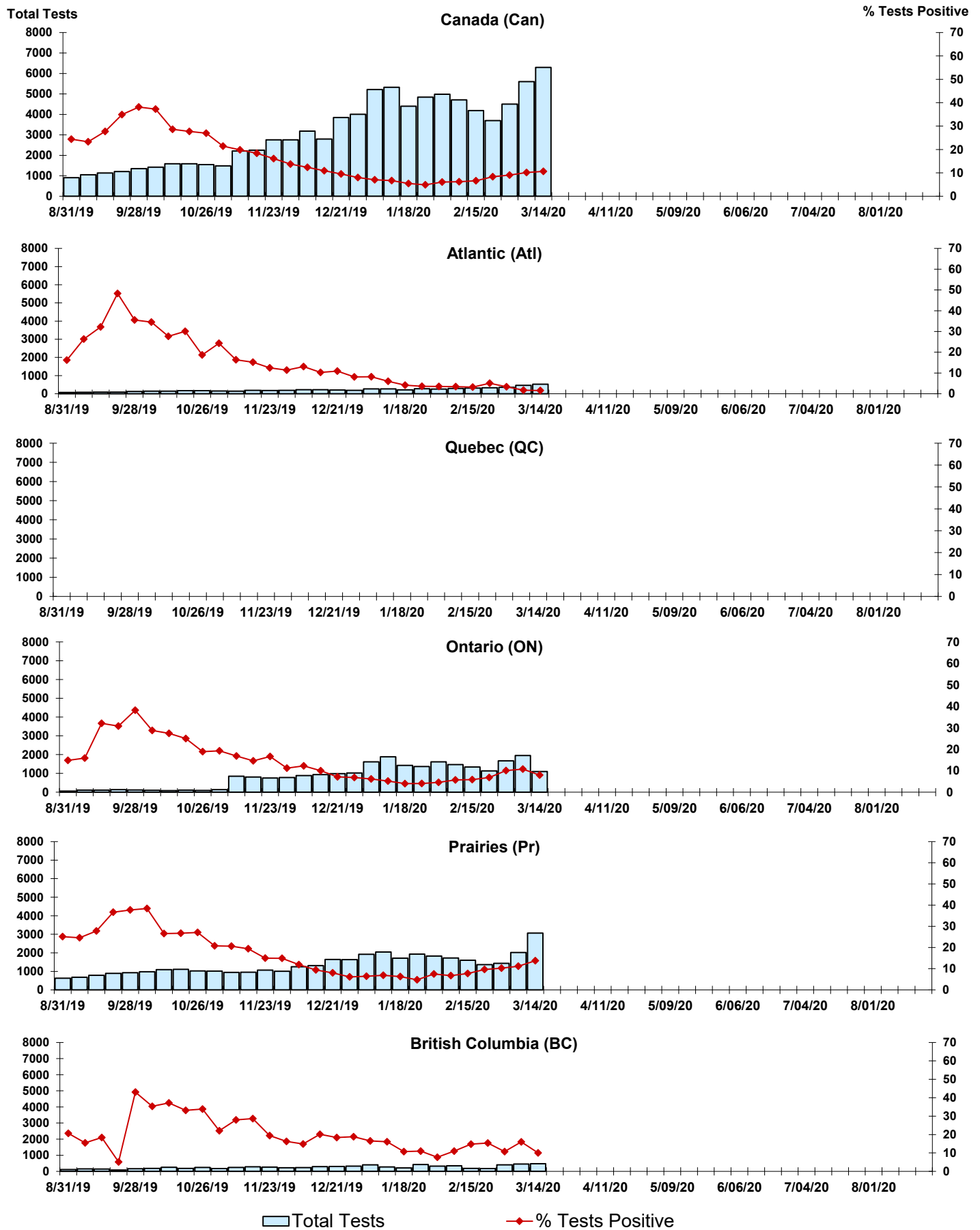
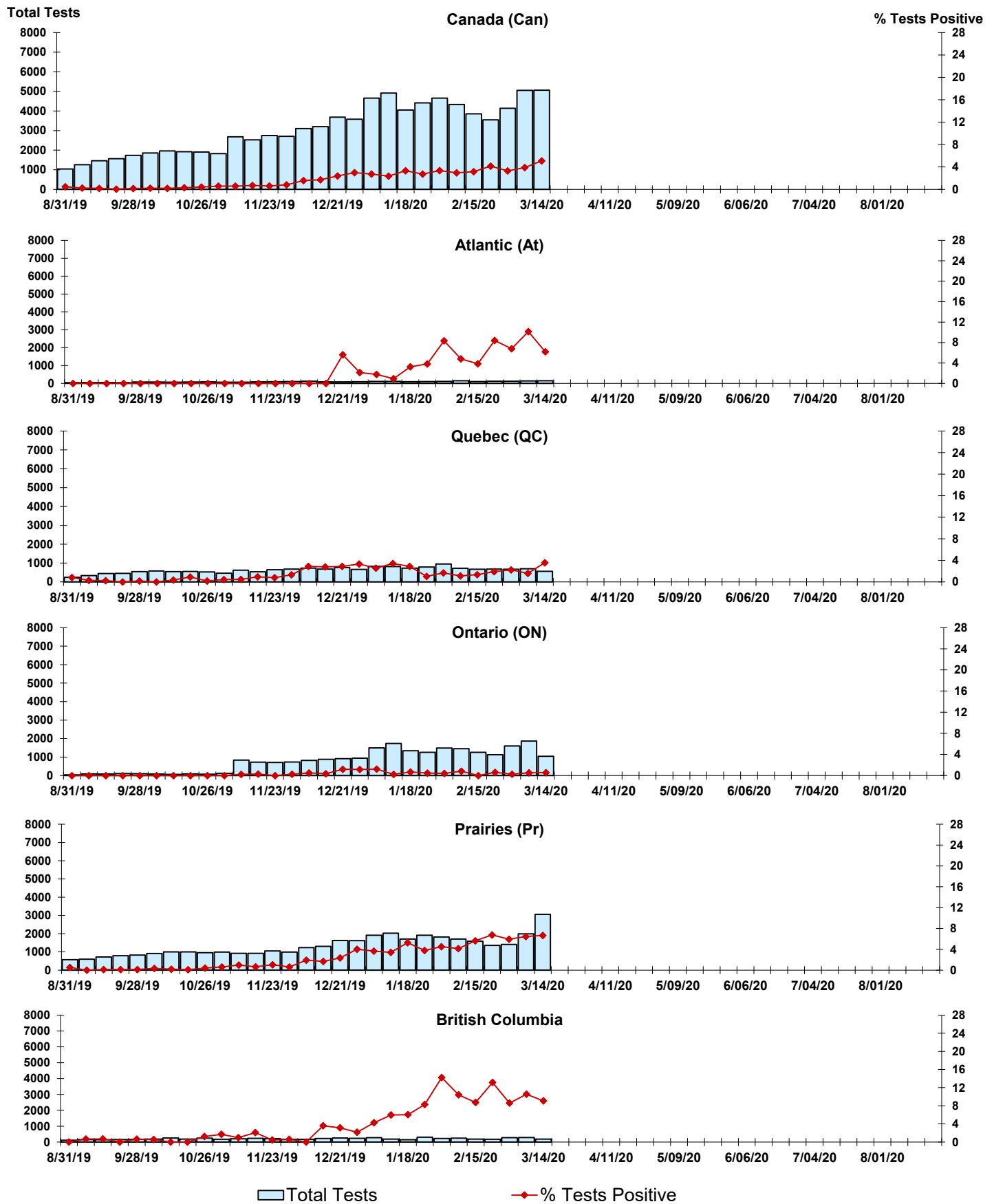


Figure 8: Positive Coronavirus (coron) Tests (%) in Canada by Region by Week of Report



Abbreviations:

Respiratory Virus Report, Week 11 - ending March 14, 2020

A(H3): Influenza A(H3N2)

A (UnS): Influenza A (Unsubtyped)

Adeno: Adenovirus

CHEO: Children's Hospital of Eastern Ontario

Coron: Coronavirus

Entero: Enterovirus

hMPV: human metapneumovirus

HSC: Health Sciences Centre

N.A.: Not Applicable

P.H.L.: Public Health Laboratory

P.H.O.L.: Public Health Ontario Laboratory

PIV: Parainfluenza

Rhino: Rhinovirus

RSV: Respiratory syncytial virus

UHN: University Health Network

Notes:

Specimens from Yukon (YT), Northwest Territories (NT) and Nunavut (NU) are sent to reference laboratories in other provinces. Results reported for the Territories reflect the number of specimens that are identified as originating from YT, NT or NU.

Delays in the reporting of data may cause data to change retrospectively.

Due to reporting delays, the sum of weekly report totals do not add up to cumulative totals.

