

# Respiratory Virus Report, Week 14 - ending April 4, 2020

The Respiratory Virus Detection Surveillance System collects data from select laboratories across Canada on the number of tests performed and the number of tests positive for influenza and other respiratory viruses. Data are reported on a weekly basis year-round to the Centre for Immunization and Respiratory Infectious Diseases (CIRID), Public Health Agency of Canada. These data are also summarized in the weekly FluWatch report.

**In this Respiratory Virus Report, the number of detections of coronavirus reflects only seasonal human coronaviruses, not the novel pandemic coronavirus (SARS-CoV2) that causes COVID-19. For information on COVID-19, see the [Coronavirus disease \(COVID-19\): Outbreak](#)**

**Table 1: Respiratory Virus Detections/Isolations for the week ending April 4, 2020 (Reporting Week 202014)**

Reporting Laboratory	Flu Tested	A(H1N1)pdm09 Positive	A(H3) Positive	A(UnS) Positive	Total Flu A Positive	Total Flu B Positive	RSV Tested	RSV Positive	PIV Tested	PIV 1 Positive	PIV 2 Positive	PIV 3 Positive	PIV 4 Positive	Other PIV Positive	Adeno Tested	Adeno Positive	hMPV Tested	hMPV Positive	Entero/Rhino Tested	Entero/Rhino Positive	Coron Tested	Coron Positive
Newfoundland	1548	0	0	6	6	19	1548	24	1548	2	0	0	0	0	1548	3	1548	24	1548	11	N.A.	N.A.
Prince Edward Island	47	0	0	0	0	0	47	4	0	0	0	0	0	0	0	0	0	0	0	0	0	0
Nova Scotia	547	0	0	5	5	9	557	49	3	0	0	0	0	0	3	0	3	0	3	1	3	0
New Brunswick	225	0	0	1	1	0	225	3	14	0	0	0	0	0	14	0	14	0	14	0	14	1
<b>Atlantic</b>	<b>2367</b>	<b>0</b>	<b>0</b>	<b>12</b>	<b>12</b>	<b>28</b>	<b>2377</b>	<b>80</b>	<b>1565</b>	<b>2</b>	<b>0</b>	<b>0</b>	<b>0</b>	<b>0</b>	<b>1565</b>	<b>3</b>	<b>1565</b>	<b>24</b>	<b>1565</b>	<b>12</b>	<b>17</b>	<b>1</b>
Région Nord-Est	157	0	0	10	10	1	151	8	0	0	0	0	0	0	0	0	0	0	N.A.	N.A.	0	0
Québec-Chaudière-Appalaches	57	0	0	1	1	0	62	1	17	0	0	0	0	0	16	0	14	2	N.A.	N.A.	13	0
Centre-du-Québec	226	0	0	0	0	0	198	13	0	0	0	0	0	0	0	0	0	0	N.A.	N.A.	0	0
Montréal-Laval	375	0	0	2	2	0	375	10	21	0	0	0	0	0	21	0	21	0	N.A.	N.A.	21	0
Ouest du Québec	141	0	0	1	1	0	131	2	0	0	0	0	0	0	0	0	0	0	N.A.	N.A.	0	0
Montérégie	1	0	0	0	0	0	1	0	0	0	0	0	0	0	0	0	0	0	N.A.	N.A.	0	0
<b>Province of Québec</b>	<b>957</b>	<b>0</b>	<b>0</b>	<b>14</b>	<b>14</b>	<b>1</b>	<b>918</b>	<b>34</b>	<b>38</b>	<b>0</b>	<b>0</b>	<b>0</b>	<b>0</b>	<b>0</b>	<b>37</b>	<b>0</b>	<b>35</b>	<b>2</b>	<b>N.A.</b>	<b>N.A.</b>	<b>34</b>	<b>0</b>
P.H.O.L. - Ottawa	145	0	1	0	1	0	145	4	145	0	0	0	0	0	145	1	145	6	145	1	145	0
CHEO - Ottawa	221	0	0	1	1	12	221	6	10	0	0	0	0	0	10	0	10	0	10	2	10	1
P.H.O.L. - Kingston	116	0	2	0	2	0	116	4	116	0	0	0	0	0	116	0	116	5	116	2	116	0
UHN / Mount Sinai Hospital	0	0	0	0	0	0	0	0	0	0	0	0	0	0	0	0	0	0	0	0	N.A.	N.A.
P.H.O.L. - Toronto	942	3	0	0	3	0	940	13	940	0	0	0	0	0	940	1	936	42	940	23	936	0
Sick Kids Hospital - Toronto	78	0	0	0	0	0	78	1	78	0	0	1	0	0	78	2	78	2	78	8	78	2
Sunnybrook & Women's College HSC	0	0	0	0	0	0	0	0	0	0	0	0	0	0	0	0	0	0	0	0	0	0
P.H.O.L. - Sault Ste. Marie	42	1	0	0	1	0	41	5	42	0	0	0	0	0	42	0	41	7	42	0	41	0
P.H.O.L. - Timmins	35	0	0	0	0	0	35	3	35	0	0	0	0	0	35	0	35	3	35	1	35	0
St. Joseph's - London	293	0	0	0	0	1	293	4	52	0	0	0	0	0	52	0	52	0	27	2	27	0
P.H.O.L. - London	296	0	0	3	3	2	296	11	296	0	0	0	0	0	296	0	295	17	296	7	295	0
P.H.O.L. - Orillia	66	0	0	0	0	0	66	2	66	0	0	0	0	0	66	0	66	4	66	3	66	0
P.H.O.L. - Thunder Bay	72	1	1	1	3	2	72	10	72	0	0	0	0	0	72	0	72	6	72	0	72	0
P.H.O.L. - Sudbury	36	0	0	0	0	0	36	2	36	0	0	0	0	0	36	0	36	0	36	3	36	0
P.H.O.L. - Hamilton	245	0	0	0	0	0	238	3	238	0	0	0	0	0	238	0	236	12	238	16	236	0
P.H.O.L. - Peterborough	49	0	0	0	0	0	49	2	49	0	0	0	0	0	49	0	49	4	49	4	49	0
St. Joseph's - Hamilton	3281	0	0	3	3	4	3281	51	3281	3	0	2	0	0	3281	10	3281	42	3281	74	0	0
<b>Province of Ontario</b>	<b>5917</b>	<b>5</b>	<b>4</b>	<b>8</b>	<b>17</b>	<b>21</b>	<b>5907</b>	<b>121</b>	<b>5456</b>	<b>3</b>	<b>0</b>	<b>3</b>	<b>0</b>	<b>0</b>	<b>5456</b>	<b>14</b>	<b>5448</b>	<b>150</b>	<b>5431</b>	<b>146</b>	<b>2142</b>	<b>3</b>
Province of Manitoba	0	0	0	0	0	0	0	0	0	0	0	0	0	0	0	0	0	0	0	0	0	0
Regina	369	0	0	6	6	0	369	29	19	0	0	0	0	0	19	2	19	0	19	2	19	1
Saskatoon	0	0	0	0	0	0	0	0	0	0	0	0	0	0	0	0	0	0	0	0	0	0
Province of Saskatchewan	369	0	0	6	6	0	369	29	19	0	0	0	0	0	19	2	19	0	19	2	19	1
Province of Alberta	2705	4	1	0	5	5	2705	0	2705	6	2	3	6	6	2705	20	2705	80	2705	122	2705	92
<b>Prairies</b>	<b>3074</b>	<b>4</b>	<b>1</b>	<b>6</b>	<b>11</b>	<b>5</b>	<b>3074</b>	<b>29</b>	<b>2724</b>	<b>6</b>	<b>2</b>	<b>3</b>	<b>6</b>	<b>6</b>	<b>2724</b>	<b>22</b>	<b>2724</b>	<b>80</b>	<b>2724</b>	<b>124</b>	<b>2724</b>	<b>93</b>
<b>British Columbia</b>	<b>7031</b>	<b>0</b>	<b>0</b>	<b>0</b>	<b>10</b>	<b>17</b>	<b>7031</b>	<b>106</b>	<b>1554</b>	<b>0</b>	<b>0</b>	<b>0</b>	<b>1</b>	<b>10</b>	<b>1554</b>	<b>7</b>	<b>1554</b>	<b>32</b>	<b>1512</b>	<b>42</b>	<b>223</b>	<b>11</b>
Yukon	1300	0	0	0	3	10	1300	4	N.A.	N.A.	N.A.	N.A.	N.A.	N.A.	N.A.	N.A.	N.A.	N.A.	N.A.	N.A.	N.A.	N.A.
Northwest Territories	42	0	0	0	0	3	42	0	42	0	0	0	0	0	42	0	42	2	42	2	42	1
Nunavut	72	0	0	1	1	3	72	2	72	1	0	0	0	0	72	0	72	2	72	0	10	1
<b>Territories</b>	<b>1414</b>	<b>0</b>	<b>0</b>	<b>1</b>	<b>4</b>	<b>16</b>	<b>1414</b>	<b>6</b>	<b>114</b>	<b>1</b>	<b>0</b>	<b>0</b>	<b>0</b>	<b>0</b>	<b>114</b>	<b>0</b>	<b>114</b>	<b>4</b>	<b>114</b>	<b>2</b>	<b>52</b>	<b>2</b>
<b>CANADA</b>	<b>20760</b>	<b>9</b>	<b>5</b>	<b>41</b>	<b>68</b>	<b>88</b>	<b>20721</b>	<b>376</b>	<b>11451</b>	<b>12</b>	<b>2</b>	<b>6</b>	<b>7</b>	<b>10</b>	<b>11450</b>	<b>46</b>	<b>11440</b>	<b>292</b>	<b>11346</b>	<b>326</b>	<b>5192</b>	<b>110</b>

Specimens from Yukon (YT), Northwest Territories (NT) and Nunavut (NU) are sent to reference laboratories in other provinces and reported results reflect specimens identified as originating from YT, NT or NU.

Results from British Columbia comprise of specimens from the following sites: BC Children's and Women's Hospital, Children's and Women's Hospital Laboratory, Fraser Health Medical Microbiology Laboratory, Island Health, Providence Health Care, Powell River Hospital, St. Paul's Hospital, Vancouver General Hospital, Victoria General Hospital, Victoria Coastal Health, BCCDC Public Health Laboratory, Interior Health Authority sites and Northern Health Authority sites.

Delays in the reporting of data may cause data to change retrospectively.

For BC, only data from subtyped influenza A specimens are included in the weekly number of influenza detections and so the sum of A(H1N1)pdm09, A(H3), and A(UnS) positive results may not equal the sum of total Flu A positive results.

**Table 2: Respiratory Virus Detections/Isolations for the period August 31, 2019 - April 4, 2020 (Reporting Weeks 201935-202014)**

Reporting Laboratory	Flu Tested	A(H1N1)pdm09 Positive	A(H3) Positive	A(UnS) Positive	Total Flu A Positive	Total Flu B Positive	RSV Tested	RSV Positive	PIV Tested	PIV 1 Positive	PIV 2 Positive	PIV 3 Positive	PIV 4 Positive	Other PIV Positive	Adeno Tested	Adeno Positive	hMPV Tested	hMPV Positive	Entero/Rhino Tested	Entero/Rhino Positive	Coron Tested	Coron Positive
Newfoundland	7112	8	33	165	206	510	7112	315	7112	139	1	9	0	0	7112	105	7112	167	7112	343	N.A.	N.A.
Prince Edward Island	1147	0	0	144	144	78	1147	144	47	1	0	0	1	0	47	0	45	0	47	16	47	1
Nova Scotia	4864	3	2	195	200	247	4864	599	510	13	1	3	5	0	544	10	544	11	544	77	554	14
New Brunswick	11312	60	29	957	1046	1292	11253	1075	2235	50	6	0	13	0	2235	62	2235	16	2235	284	3909	112
<b>Atlantic</b>	<b>24435</b>	<b>71</b>	<b>64</b>	<b>1461</b>	<b>1596</b>	<b>2127</b>	<b>24476</b>	<b>2133</b>	<b>9904</b>	<b>203</b>	<b>8</b>	<b>12</b>	<b>19</b>	<b>0</b>	<b>9938</b>	<b>177</b>	<b>9936</b>	<b>194</b>	<b>9938</b>	<b>720</b>	<b>4510</b>	<b>127</b>
Région Nord-Est	8720	0	0	1135	1135	1323	7458	640	0	0	0	0	0	0	0	0	0	0	N.A.	N.A.	0	0
Québec-Chaudière-Appalaches	13918	0	0	1900	1900	1828	13749	1318	2619	31	4	3	14	0	2670	79	2072	24	N.A.	N.A.	2017	34
Centre-du-Québec	18721	0	0	2908	2908	2395	15049	1379	0	0	0	0	0	0	0	0	0	0	N.A.	N.A.	0	0
Montréal-Laval	37132	0	0	4020	4020	2411	35975	2388	16579	144	4	34	13	0	16579	513	16116	270	N.A.	N.A.	16426	260
Ouest du Québec	12217	0	0	1745	1745	1278	11378	1087	0	0	0	0	0	0	0	0	0	0	N.A.	N.A.	0	0
Montérégie	8505	0	0	1133	1133	791	8277	610	0	0	0	0	0	0	0	0	0	0	N.A.	N.A.	0	0
<b>Province of Québec</b>	<b>99213</b>	<b>0</b>	<b>0</b>	<b>12841</b>	<b>12841</b>	<b>10026</b>	<b>91886</b>	<b>7422</b>	<b>19198</b>	<b>175</b>	<b>8</b>	<b>37</b>	<b>27</b>	<b>0</b>	<b>19249</b>	<b>592</b>	<b>18188</b>	<b>294</b>	<b>N.A.</b>	<b>N.A.</b>	<b>18443</b>	<b>294</b>
P.H.O.L. - Ottawa	1434	108	61	2	171	71	1425	81	1400	2	0	0	0	0	1400	16	1387	50	1244	73	1230	0
CHEO - Ottawa	8049	1	0	651	652	417	8049	672	840	17	0	5	10	5	840	17	840	20	843	157	831	28
P.H.O.L. - Kingston	984	62	27	2	91	20	969	64	965	1	0	0	0	0	965	16	956	54	796	61	783	0
UHN / Mount Sinai Hospital	11085	9	0	651	660	218	11085	348	540	7	2	10	2	0	0	0	538	10	0	0	N.A.	N.A.
P.H.O.L. - Toronto	15049	1348	144	36	1528	355	14588	412	14509	34	0	3	0	0	14509	146	14291	426	11965	767	11727	0
Sick Kids Hospital - Toronto	2304	104	13	99	216	168	1833	206	1833	26	5	7	27	0	1833	51	1833	48	1833	358	1833	90
Sunnybrook & Women's College HSC	1611	0	0	124	124	24	1611	47	1611	8	0	9	0	0	1352	5	1471	21	1471	51	120	0
P.H.O.L. - Sault Ste. Marie	404	20	0	0	20	8	403	26	404	1	0	0	0	0	404	4	401	27	353	14	350	0
P.H.O.L. - Timmins	368	65	3	2	70	12	337	24	339	0	0	0	0	0	339	0	336	25	311	5	306	0
St. Joseph's - London	4072	0	0	237	237	114	4072	334	1284	19	4	3	14	0	1284	23	1284	33	665	108	644	19
P.H.O.L. - London	4109	309	112	7	428	144	4080	246	4066	8	0	0	0	0	4066	44	4028	162	3610	281	3560	0
P.H.O.L. - Orillia	1334	81	31	3	115	32	1334	84	1331	4	0	0	0	0	1331	8	1326	46	1140	71	1133	0
P.H.O.L. - Thunder Bay	614	81	17	9	107	45	612	42	612	0	0	1	0	0	612	11	601	35	564	32	552	0
P.H.O.L. - Sudbury	583	29	14	4	47	15	578	45	578	0	0	1	0	0	578	9	568	11	506	25	495	0
P.H.O.L. - Hamilton	4045	286	39	9	334	117	3924	156	3905	10	1	0	0	0	3905	67	3884	134	3310	320	3285	0
P.H.O.L. - Peterborough	1030	66	4	1	71	10	1026	33	1025	3	0	0	0	0	1024	9	1020	47	770	64	763	0
St. Joseph's - Hamilton	19057	0	0	1615	1615	806	19057	1251	19057	117	6	26	0	0	19057	263	19057	443	19057	1186	0	0
<b>Province of Ontario</b>	<b>76132</b>	<b>2569</b>	<b>465</b>	<b>3452</b>	<b>6486</b>	<b>2576</b>	<b>74983</b>	<b>4071</b>	<b>54299</b>	<b>257</b>	<b>18</b>	<b>65</b>	<b>53</b>	<b>5</b>	<b>53499</b>	<b>689</b>	<b>53821</b>	<b>1592</b>	<b>48438</b>	<b>3573</b>	<b>27612</b>	<b>137</b>
Manitoba	13753	174	134	1329	1637	883	13360	868	3393	45	8	4	8	0	3393	55	2365	44	3393	478	2365	76
Regina	11452	43	26	1193	1262	663	11461	1023	4504	148	11	6	27	0	4504	81	4427	184	4504	774	4504	145
Saskatoon	4455	0	0	318	318	235	4455	182	4519	98	12	6	7	0	4519	66	4522	27	4519	530	4519	45
Province of Saskatchewan	15907	43	26	1511	1580	898	15916	1205	9023	246	23	12	34	0	9023	147	8949	211	9023	1304	9023	190
Province of Alberta	44607	1730	1286	1346	4362	3409	37166	0	37166	483	86	90	241	0	37166	556	37166	1452	37166	4619	37166	1468
<b>Prairies</b>	<b>74267</b>	<b>1947</b>	<b>1446</b>	<b>4186</b>	<b>7579</b>	<b>5190</b>	<b>66442</b>	<b>2073</b>	<b>49582</b>	<b>774</b>	<b>117</b>	<b>106</b>	<b>283</b>	<b>0</b>	<b>49582</b>	<b>758</b>	<b>48480</b>	<b>1707</b>	<b>49582</b>	<b>6401</b>	<b>48554</b>	<b>1734</b>
<b>British Columbia</b>	<b>60545</b>	<b>276</b>	<b>243</b>	<b>1846</b>	<b>4082</b>	<b>2569</b>	<b>60189</b>	<b>2701</b>	<b>12359</b>	<b>182</b>	<b>55</b>	<b>37</b>	<b>47</b>	<b>69</b>	<b>12356</b>	<b>130</b>	<b>12291</b>	<b>632</b>	<b>11675</b>	<b>1609</b>	<b>6549</b>	<b>294</b>
Yukon	5486	4	8	55	73	45	5486	22	N.A.	N.A.	N.A.	N.A.	N.A.	N.A.	N.A.	N.A.	N.A.	N.A.	N.A.	N.A.	N.A.	N.A.
Northwest Territories	1257	89	19	1	109	190	1246	0	1246	14	2	12	13	0	1246	19	1246	84	1246	166	1246	72
Nunavut	595	5	14	42	61	52	592	29	592	22	3	1	4	0	592	17	592	9	592	96	147	10
<b>Territories</b>	<b>7338</b>	<b>98</b>	<b>41</b>	<b>98</b>	<b>243</b>	<b>287</b>	<b>7324</b>	<b>51</b>	<b>1838</b>	<b>36</b>	<b>5</b>	<b>13</b>	<b>17</b>	<b>0</b>	<b>1838</b>	<b>36</b>	<b>1838</b>	<b>93</b>	<b>1838</b>	<b>262</b>	<b>1393</b>	<b>82</b>
<b>CANADA</b>	<b>341930</b>	<b>4961</b>	<b>2259</b>	<b>23884</b>	<b>32827</b>	<b>22775</b>	<b>325300</b>	<b>18451</b>	<b>147180</b>	<b>1627</b>	<b>211</b>	<b>270</b>	<b>446</b>	<b>74</b>	<b>146462</b>	<b>2382</b>	<b>144554</b>	<b>4512</b>	<b>121471</b>	<b>12565</b>	<b>107061</b>	<b>2668</b>

Specimens from YT, NT and NU are sent to reference laboratories in other provinces and reported results reflect specimens identified as originating from YT, NT or NU.

Results from British Columbia comprise of specimens from the following sites: BC Children's and Women's Hospital, Children's and Women's Hospital Laboratory, Fraser Health Medical Microbiology Laboratory, Island Health, Providence Health Care, Powell River Hospital, St. Paul's Hospital, Vancouver General Hospital, Victoria General Hospital, Victoria Coastal Health, BCCDC P

Delays in the reporting of data may cause data to change retrospectively. Due to reporting delays, the sum of weekly report totals do not add up to cumulative totals.

For BC, only data from subtyped influenza A specimens are included in the weekly number of influenza detections and so the sum of A(H1N1)pdm09, A(H3), and A(UnS) positive results may not equal the sum of total Flu A positive results.

Figure 1: Number positive laboratory tests for other respiratory viruses by report week, Canada, 2019-20

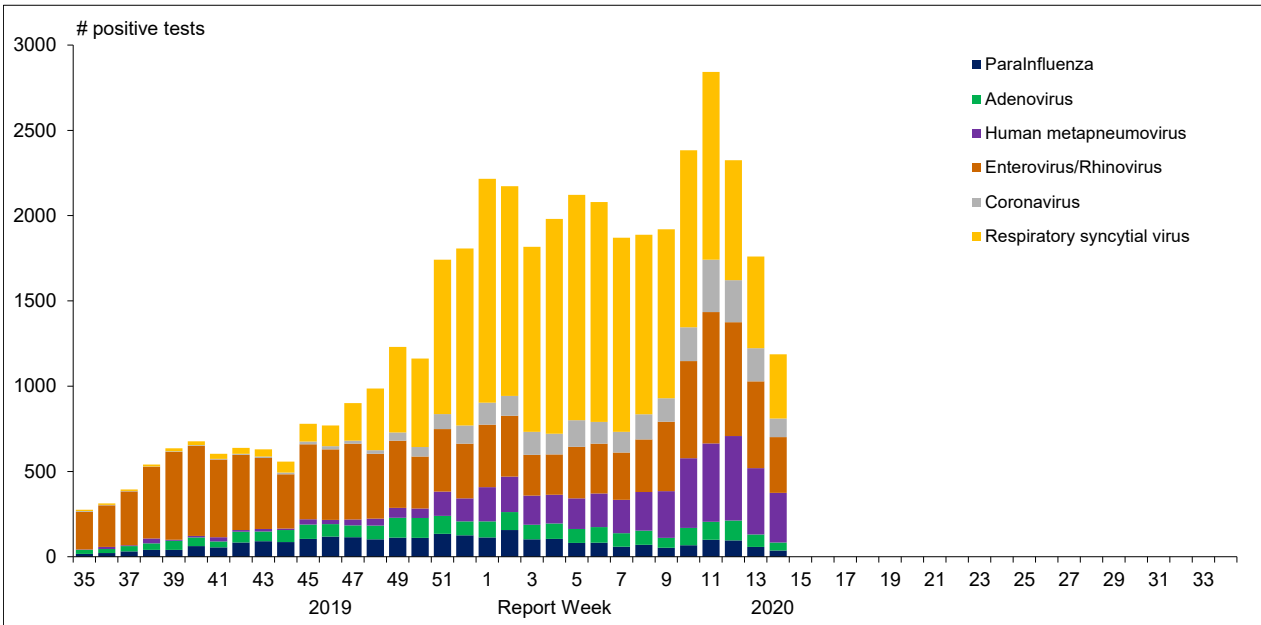


Figure 2 : Positive Influenza Tests (%) in Canada by Region by Week of Report

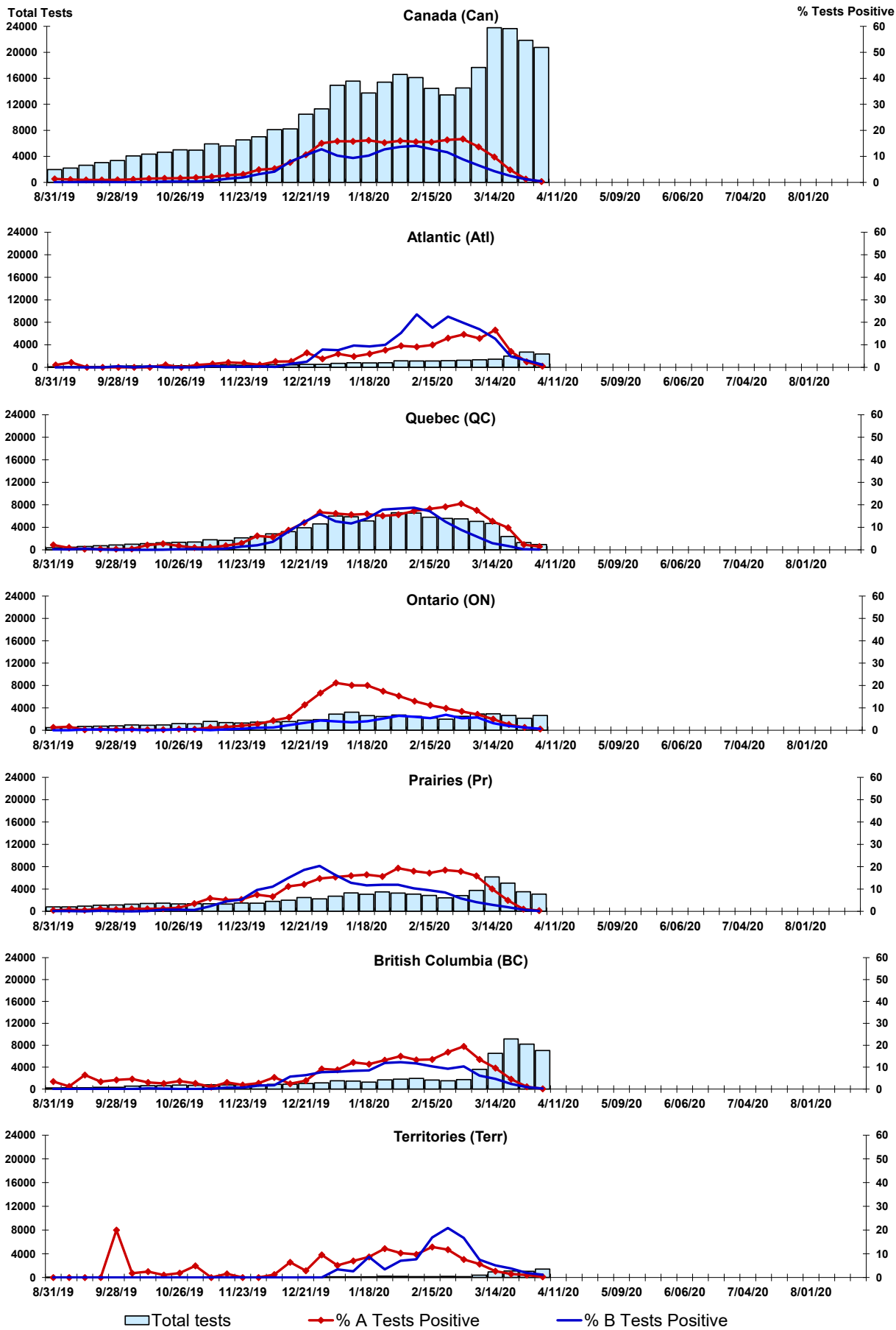


Figure 3: Positive Respiratory syncytial virus (RSV) Tests (%) in Canada by Region by Week of Report

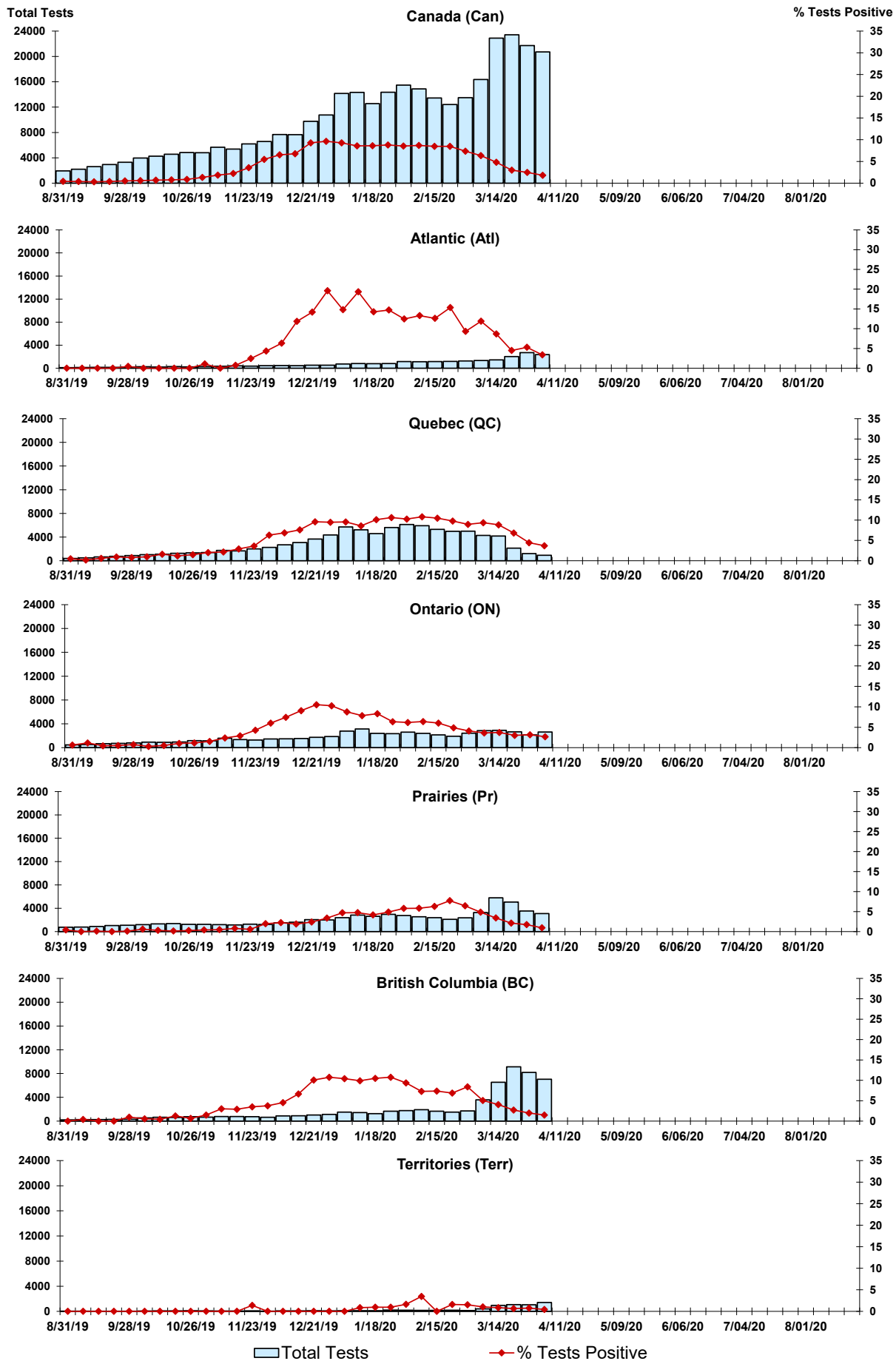


Figure 4: Positive Parainfluenza (PIV) Tests (%) in Canada by Region by Week of Report

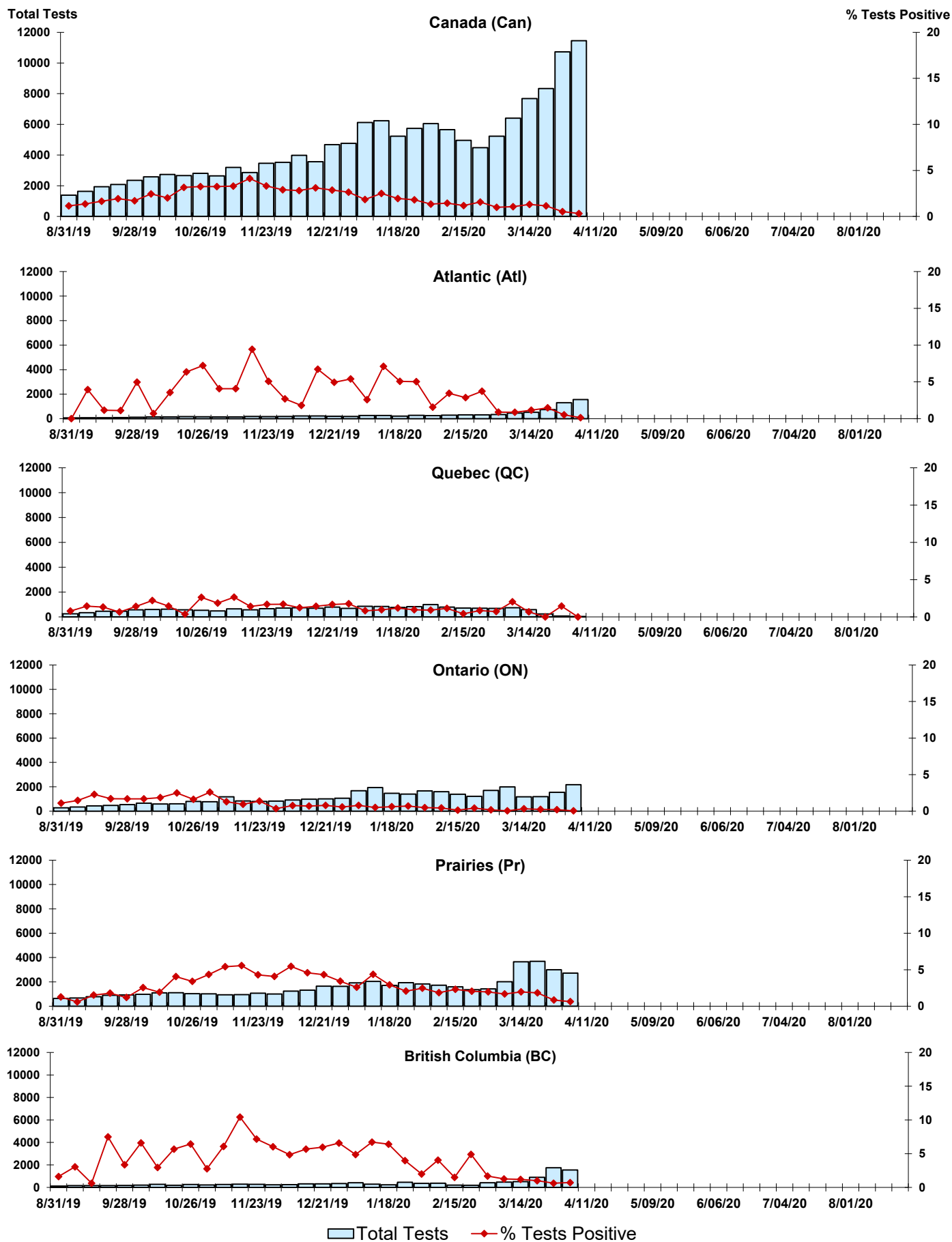


Figure 5: Positive Adenovirus (adeno) Tests (%) in Canada by Region by Week of Report

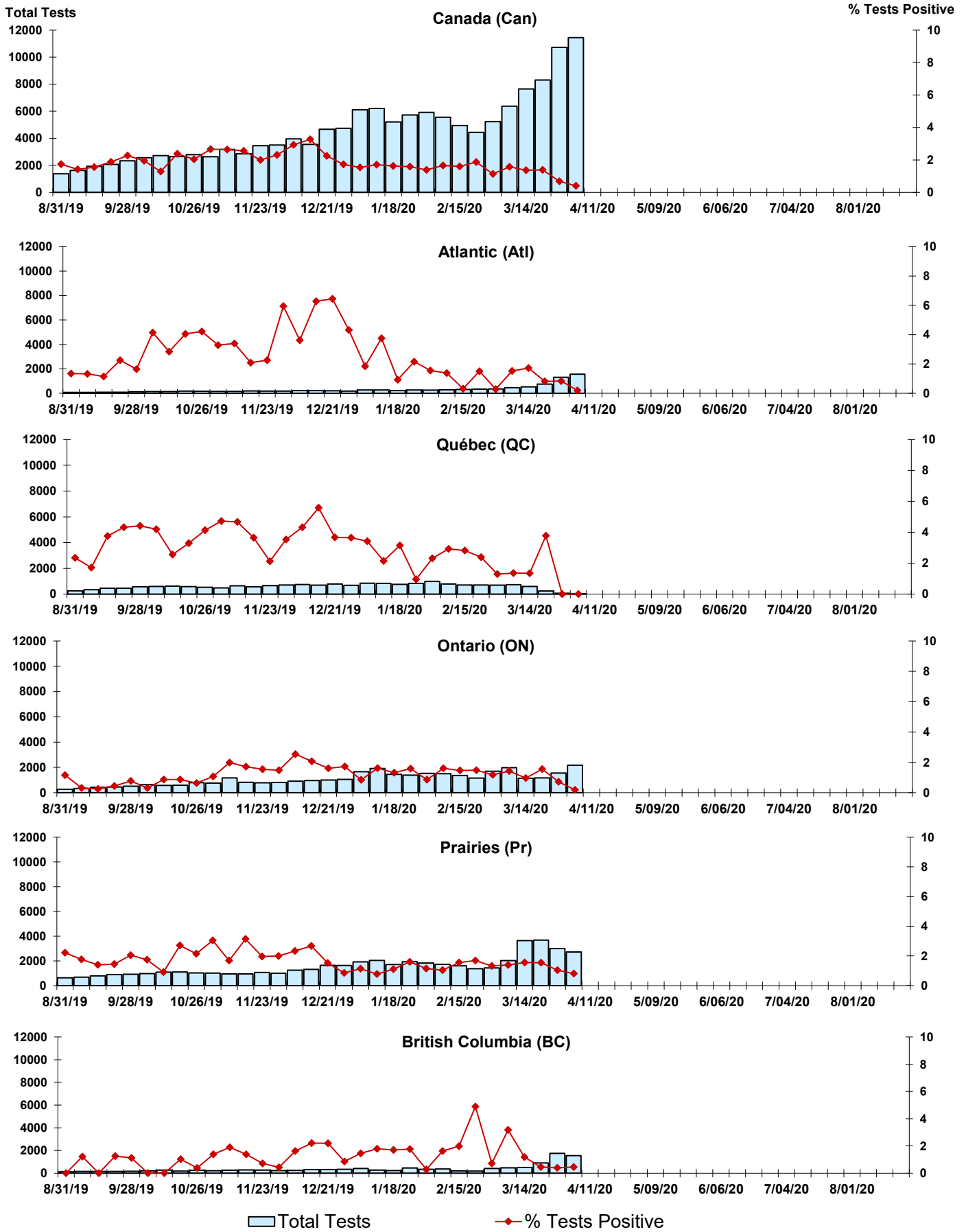


Figure 6: Positive human metapneumovirus (hMPV) Tests (%) in Canada by Region by Week of Report

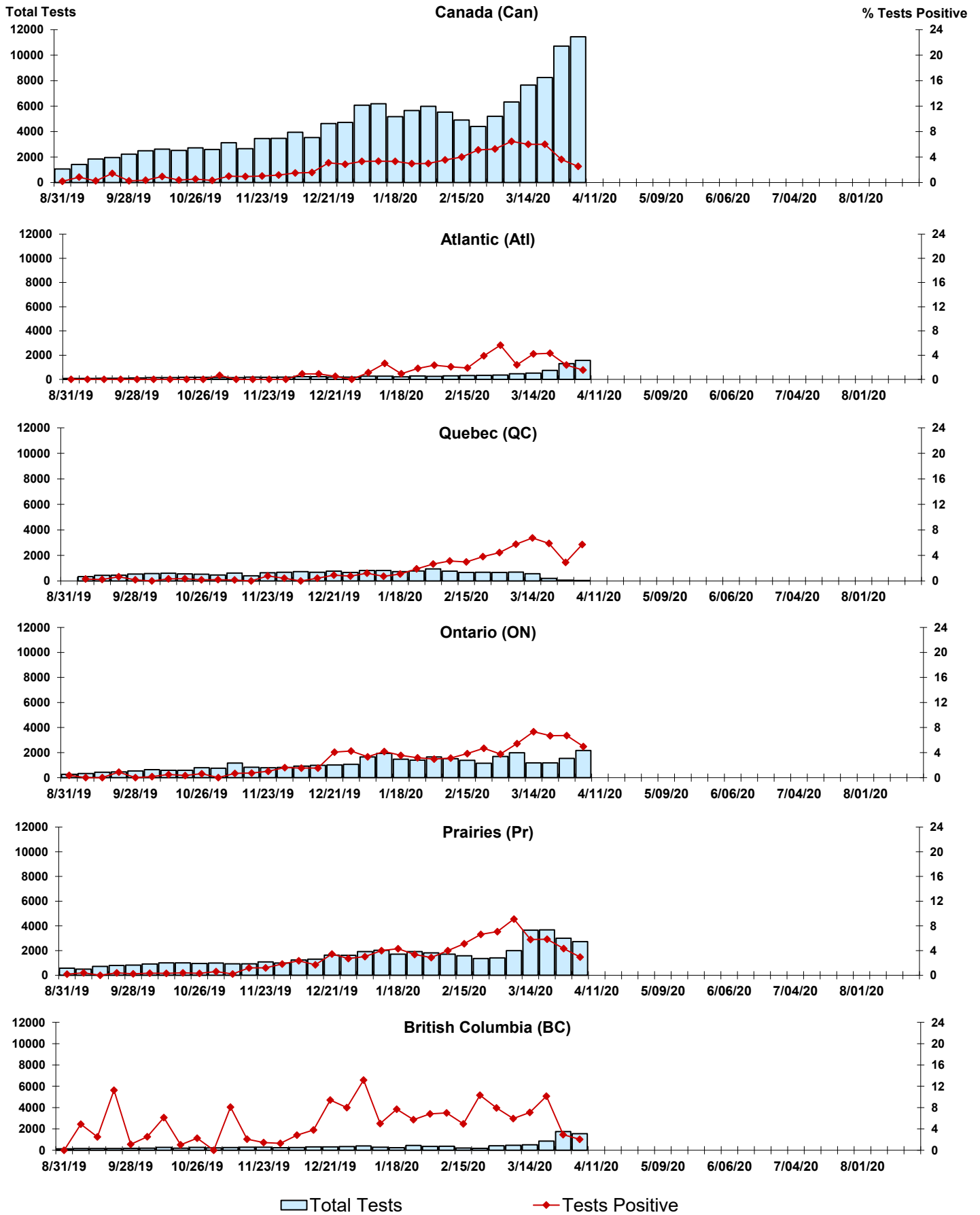




Figure 7: Positive Enterovirus/Rhinovirus (entero/rhino) Tests (%) in Canada by Region by Week of Report

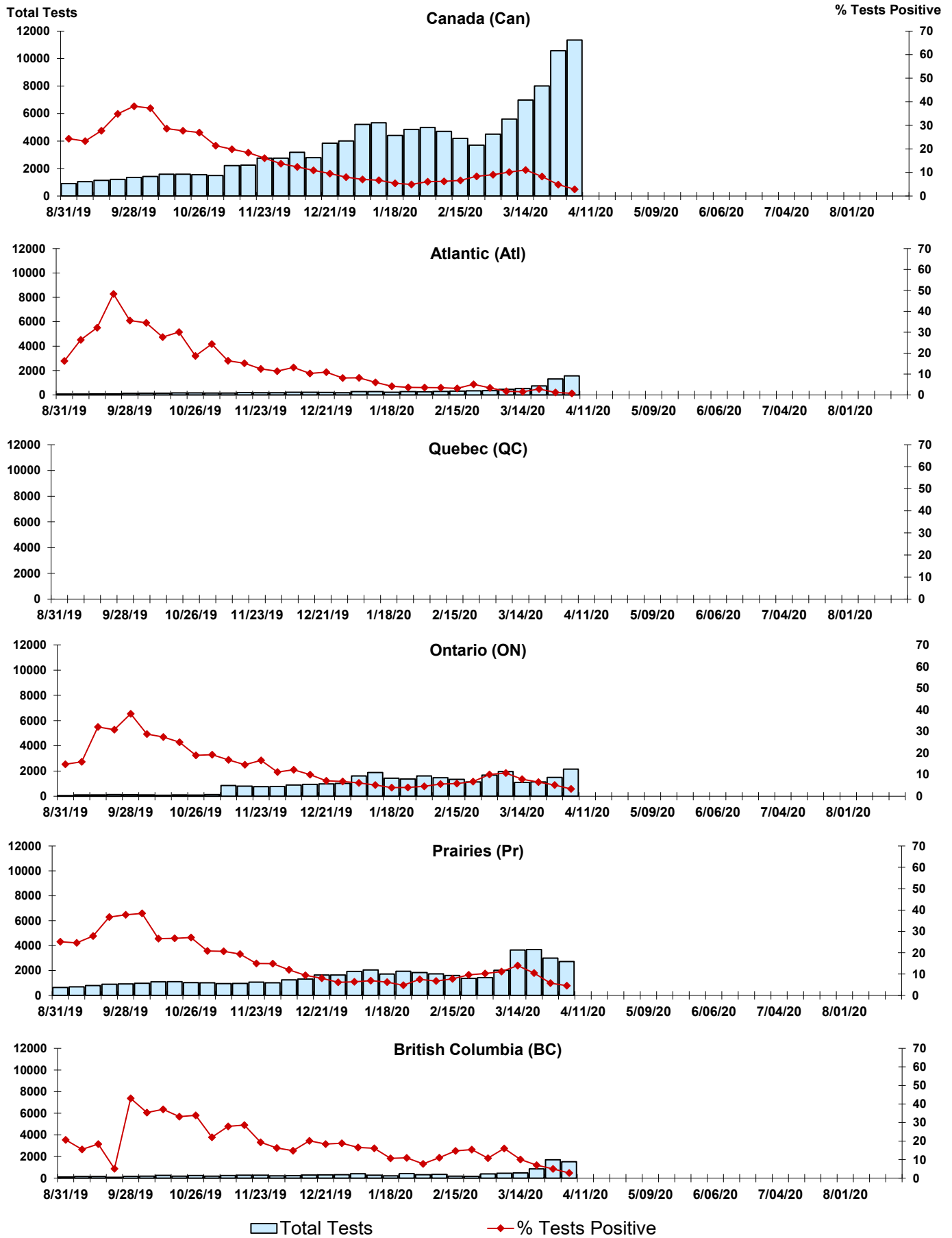
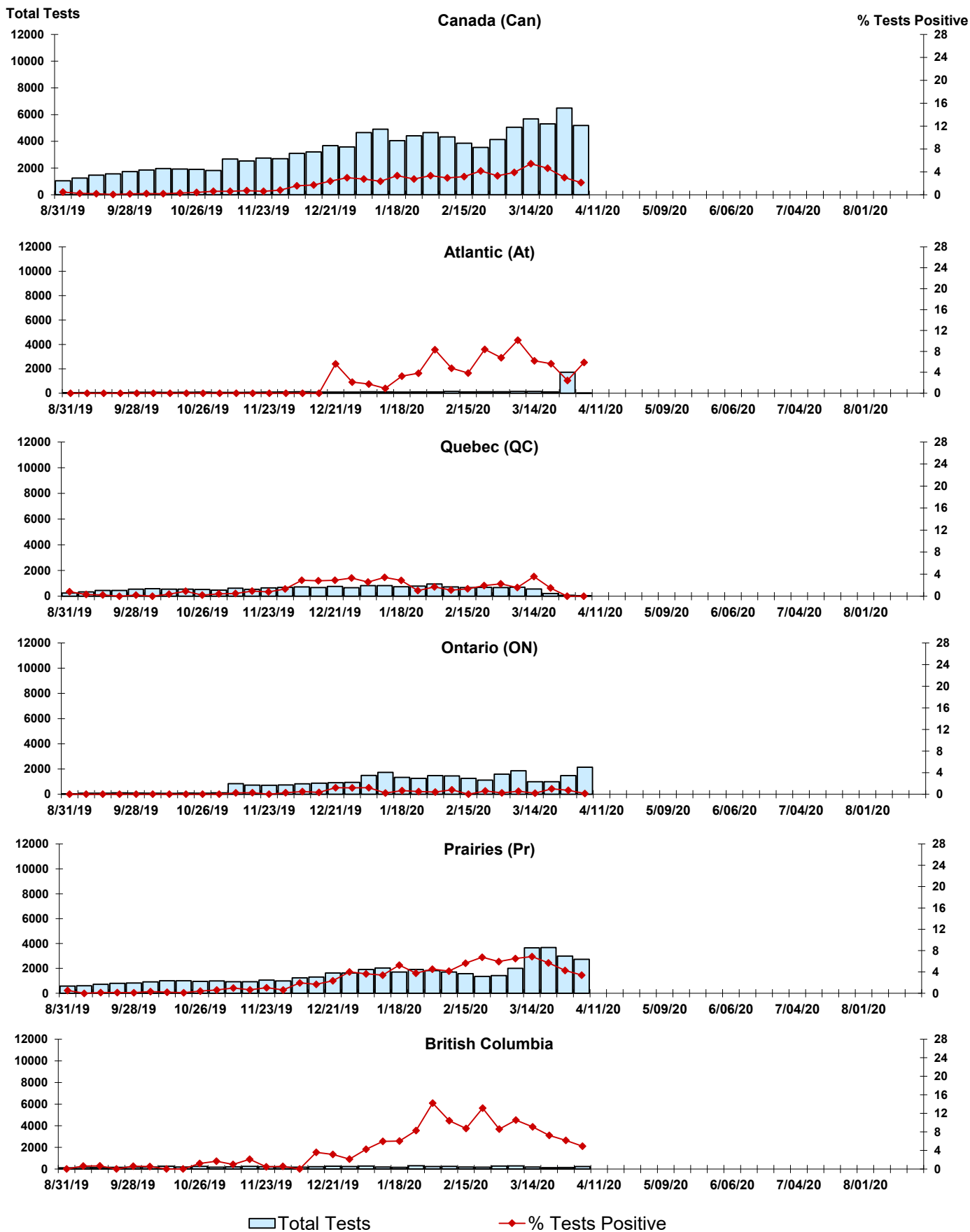


Figure 8: Positive Coronavirus (coron) Tests (%) in Canada by Region by Week of Report



## Abbreviations:

A(H1N1)pdm09: Influenza A(H1N1)pdm09

A(H3): Influenza A(H3N2)

A (UnS): Influenza A (Unsubtyped)

Adeno: Adenovirus

CHEO: Children's Hospital of Eastern Ontario

Coron: Coronavirus

Entero: Enterovirus

hMPV: human metapneumovirus

HSC: Health Sciences Centre

N.A.: Not Applicable

P.H.L.: Public Health Laboratory

P.H.O.L.: Public Health Ontario Laboratory

PIV: Parainfluenza

Rhino: Rhinovirus

RSV: Respiratory syncytial virus

UHN: University Health Network

## Notes:

Specimens from Yukon (YT), Northwest Territories (NT) and Nunavut (NU) are sent to reference laboratories in other provinces. Results reported for the Territories reflect the number of specimens that are identified as originating from YT, NT or NU.

Delays in the reporting of data may cause data to change retrospectively.

Due to reporting delays, the sum of weekly report totals do not add up to cumulative totals.

