

Respiratory Virus Detections in Canada

Respiratory Virus Report, Week 15 - ending April 11, 2020

The Respiratory Virus Detection Surveillance System collects data from select laboratories across Canada on the number of tests performed and the number of tests positive for influenza and other respiratory viruses. Data are reported on a weekly basis year-round to the Centre for Immunization and Respiratory Infectious Diseases (CIRID), Public Health Agency of Canada. These data are also summarized in the weekly FluWatch report.

In this Respiratory Virus Report, the number of detections of coronavirus reflects only seasonal human coronaviruses, not the novel pandemic coronavirus (SARS-CoV2) that causes COVID-19. For information on COVID-19, see the [Coronavirus disease \(COVID-19\): Outbreak](#)

Table 1: Respiratory Virus Detections/Isolations for the week ending April 11, 2020 (Reporting Week 202015)

Reporting Laboratory	Flu Tested	A(H1N1)pdm09 Positive	A(H3) Positive	A(UnS) Positive	Total Flu A Positive	Total Flu B Positive	RSV Tested	RSV Positive	PIV Tested	PIV 1 Positive	PIV 2 Positive	PIV 3 Positive	PIV 4 Positive	Other PIV Positive	Adeno Tested	Adeno Positive	hMPV Tested	hMPV Positive	Entero/Rhino Tested	Entero/Rhino Positive	Coron Tested	Coron Positive
Newfoundland	907	0	0	0	0	2	907	4	907	2	0	1	0	0	907	2	907	14	907	2	N.A.	N.A.
Prince Edward Island	33	0	0	0	0	0	33	1	1	0	0	0	0	0	1	0	1	0	1	0	1	1
Nova Scotia	258	0	0	0	0	1	258	12	7	0	0	0	0	0	7	1	7	0	7	0	7	0
New Brunswick	85	0	0	0	0	0	85	1	20	2	0	0	0	0	20	0	20	0	20	0	20	3
Atlantic	1283	0	0	0	0	3	1283	18	935	4	0	1	0	0	935	3	935	14	935	2	28	4
Région Nord-Est	146	0	0	0	0	0	144	4	0	0	0	0	0	0	0	0	0	0	N.A.	N.A.	0	0
Québec-Chaudière-Appalaches	0	0	0	0	0	0	13	0	14	0	0	0	0	0	14	0	13	0	N.A.	N.A.	12	0
Centre-du-Québec	109	0	0	1	1	0	98	5	12	0	0	0	0	0	12	0	12	0	N.A.	N.A.	12	0
Montréal-Laval	82	0	0	0	0	0	82	0	9	0	0	0	0	0	9	0	9	0	N.A.	N.A.	9	0
Ouest du Québec	85	0	0	0	0	0	85	1	0	0	0	0	0	0	0	0	0	0	N.A.	N.A.	0	0
Montérégie	2	0	0	0	0	0	2	0	0	0	0	0	0	0	0	0	0	0	N.A.	N.A.	0	0
Province of Québec	424	0	0	1	1	0	424	10	35	0	0	0	0	0	35	0	34	0	N.A.	N.A.	33	0
P.H.O.L. - Ottawa	72	0	0	1	1	0	72	4	72	0	0	0	0	0	72	0	72	4	72	3	72	0
CHEO - Ottawa	232	0	0	1	1	9	232	6	21	0	0	0	0	0	21	0	21	0	21	1	21	0
P.H.O.L. - Kingston	68	0	0	2	2	0	62	3	62	0	0	0	0	0	62	0	62	0	62	0	62	0
UHN / Mount Sinai Hospital	0	0	0	0	0	0	0	0	0	0	0	0	0	0	0	0	0	0	0	0	N.A.	N.A.
P.H.O.L. - Toronto	527	0	0	0	0	0	519	1	519	0	0	0	0	0	519	4	517	10	519	10	517	0
Sick Kids Hospital - Toronto	65	0	0	0	0	0	65	1	65	0	0	1	0	0	65	1	65	0	65	8	65	1
Sunnybrook & Women's College HSC	339	0	0	0	0	0	339	4	339	0	0	1	0	0	339	1	339	1	339	1	0	0
P.H.O.L. - Sault Ste. Marie	15	0	0	0	0	0	13	1	13	0	0	0	0	0	13	0	13	2	13	0	13	0
P.H.O.L. - Timmins	66	0	0	0	0	0	66	4	66	0	0	0	0	0	66	0	66	5	66	0	66	0
St. Joseph's - London	291	0	0	1	1	0	291	0	59	0	0	0	0	0	59	0	59	0	18	1	18	0
P.H.O.L. - London	328	0	0	2	2	1	293	0	293	0	0	0	0	0	293	0	293	9	293	6	293	0
P.H.O.L. - Orillia	60	0	0	0	0	1	58	1	58	0	0	0	0	0	58	0	58	4	58	0	58	0
P.H.O.L. - Thunder Bay	97	1	0	0	1	0	97	12	97	0	0	0	0	0	97	1	97	7	97	5	97	0
P.H.O.L. - Sudbury	55	0	0	0	0	0	55	0	55	0	0	0	0	0	55	0	55	0	55	3	55	0
P.H.O.L. - Hamilton	268	0	0	1	1	0	255	1	255	0	0	0	0	0	255	0	255	3	255	14	255	0
P.H.O.L. - Peterborough	47	0	0	0	0	0	41	0	41	0	0	0	0	0	41	0	41	0	41	7	41	0
St. Joseph's - Hamilton	3328	0	0	2	2	0	3328	17	3328	1	0	0	0	0	3328	3	3328	14	3328	45	0	0
Province of Ontario	5858	1	0	10	11	11	5786	55	5343	1	0	2	0	0	5343	10	5341	59	5302	104	1633	1
Province of Manitoba	0	0	0	0	0	0	0	0	0	0	0	0	0	0	0	0	0	0	0	0	0	0
Regina	282	0	0	0	0	0	282	13	16	0	0	0	0	0	16	0	16	9	16	1	16	0
Saskatoon	0	0	0	0	0	0	0	0	0	0	0	0	0	0	0	0	0	0	0	0	0	0
Province of Saskatchewan	282	0	0	0	0	0	282	13	16	0	0	0	0	0	16	0	16	9	16	1	16	0
Province of Alberta	4022	5	0	0	5	0	4020	0	4020	3	2	2	6	6	4020	30	4020	63	4020	195	4020	92
Prairies	4304	5	0	0	5	0	4302	13	4036	3	2	2	6	6	4036	30	4036	72	4036	196	4036	92
British Columbia	3337	1	1	1	4	2	3337	24	1294	1	0	0	0	7	1294	7	1294	18	1271	30	282	7
Yukon	220	0	0	0	0	0	220	1	N.A.	N.A.	N.A.	N.A.	N.A.	N.A.	N.A.	N.A.	N.A.	N.A.	N.A.	N.A.	N.A.	N.A.
Northwest Territories	32	0	0	0	0	0	32	0	32	0	0	0	0	0	32	1	32	0	32	0	32	0
Nunavut	41	0	0	0	0	2	41	5	41	0	0	0	0	0	41	2	41	1	41	0	4	0
Territories	293	0	0	0	0	2	293	6	73	0	0	0	0	0	73	3	73	1	73	0	36	0
CANADA	15499	7	1	12	21	18	15425	126	11716	9	2	5	6	7	11716	53	11713	164	11617	332	6048	104

Specimens from Yukon (YT), Northwest Territories (NT) and Nunavut (NU) are sent to reference laboratories in other provinces and reported results reflect specimens identified as originating from YT, NT or NU.

Results from British Columbia comprise of specimens from the following sites: BC Children's and Women's Hospital, Children's and Women's Hospital Laboratory, Fraser Health Medical Microbiology Laboratory, Island Health, Providence Health Care, Powell River Hospital, St. Paul's Hospital, Vancouver General Hospital, Victoria General Hospital, Victoria Coastal Health, BCCDC Public Health Laboratory, Interior Health Authority sites and Northern Health Authority sites.

Delays in the reporting of data may cause data to change retrospectively.

For BC, only data from subtyped influenza A specimens are included in the weekly number of influenza detections and so the sum of A(H1N1)pdm09, A(H3), and A(UnS) positive results may not equal the sum of total Flu A positive results.

Table 2: Respiratory Virus Detections/Isolations for the period August 31, 2019 - April 11, 2020 (Reporting Weeks 201935-202015)

Reporting Laboratory	Flu Tested	A(H1N1)pdm09 Positive	A(H3) Positive	A(UnS) Positive	Total Flu A Positive	Total Flu B Positive	RSV Tested	RSV Positive	PIV Tested	PIV 1 Positive	PIV 2 Positive	PIV 3 Positive	PIV 4 Positive	Other PIV Positive	Adeno Tested	Adeno Positive	hMPV Tested	hMPV Positive	Entero/Rhino Tested	Entero/Rhino Positive	Coron Tested	Coron Positive
Newfoundland	8019	8	33	165	206	512	8019	319	8019	141	1	10	0	0	8019	107	8019	181	8019	345	N.A.	N.A.
Prince Edward Island	1180	0	0	144	144	78	1180	145	48	1	0	0	1	0	48	0	46	0	48	16	48	2
Nova Scotia	5122	3	2	195	200	248	5222	611	517	13	1	3	5	0	551	11	551	11	551	77	561	14
New Brunswick	11397	60	29	957	1046	1292	11338	1076	2255	52	6	0	13	0	2255	62	2255	16	2255	284	3929	115
Atlantic	25718	71	64	1461	1596	2130	25759	2151	10839	207	8	13	19	0	10873	180	10871	208	10873	722	4538	131
Région Nord-Est	8866	0	0	1135	1135	1323	7602	644	0	0	0	0	0	0	0	0	0	0	N.A.	N.A.	0	0
Québec-Chaudière-Appalaches	13918	0	0	1900	1900	1828	13762	1318	2633	31	4	3	14	0	2684	79	2085	24	N.A.	N.A.	2029	34
Centre-du-Québec	18830	0	0	2909	2909	2395	15147	1384	12	0	0	0	0	0	12	0	12	0	N.A.	N.A.	12	0
Montréal-Laval	37214	0	0	4020	4020	2411	36057	2388	16588	144	4	34	13	0	16588	513	16125	270	N.A.	N.A.	16435	260
Ouest du Québec	12302	0	0	1745	1745	1278	11463	1088	0	0	0	0	0	0	0	0	0	0	N.A.	N.A.	0	0
Montérégie	8507	0	0	1133	1133	791	8279	610	0	0	0	0	0	0	0	0	0	0	N.A.	N.A.	0	0
Province of Québec	99637	0	0	12842	12842	10026	92310	7432	19233	175	8	37	27	0	19284	592	18222	294	N.A.	N.A.	18476	294
P.H.O.L. - Ottawa	1506	108	61	3	172	71	1497	85	1472	2	0	0	0	0	1472	16	1459	54	1316	76	1302	0
CHEO - Ottawa	8281	1	0	652	653	426	8281	678	861	17	0	5	10	5	861	17	861	20	864	158	852	28
P.H.O.L. - Kingston	1052	62	27	4	93	20	1031	67	1027	1	0	0	0	0	1027	16	1018	54	858	61	845	0
UHN / Mount Sinai Hospital	11085	9	0	651	660	218	11085	348	540	7	2	10	2	0	0	0	538	10	0	0	N.A.	N.A.
P.H.O.L. - Toronto	15577	1348	144	36	1528	355	15108	413	15029	34	0	3	0	0	15029	150	14809	436	12485	777	12245	0
Sick Kids Hospital - Toronto	2369	104	13	99	216	168	1898	207	1898	26	5	8	27	0	1898	52	1898	48	1898	366	1898	91
Sunnybrook & Women's College HSC	2556	0	0	124	124	25	2556	57	2556	8	0	13	0	0	2297	10	2416	34	2416	65	120	0
P.H.O.L. - Sault Ste. Marie	419	20	0	0	20	8	416	27	417	1	0	0	0	0	417	4	414	29	366	14	363	0
P.H.O.L. - Timmins	434	65	3	2	70	12	403	28	405	0	0	0	0	0	405	0	402	30	377	5	372	0
St. Joseph's - London	4363	0	0	238	238	114	4363	334	1343	19	4	3	14	0	1343	23	1343	33	683	109	662	19
P.H.O.L. - London	4437	309	112	9	430	145	4373	246	4359	8	0	0	0	0	4359	44	4321	170	3903	287	3853	0
P.H.O.L. - Orillia	1394	81	31	3	115	33	1392	85	1389	4	0	0	0	0	1389	8	1384	50	1198	71	1191	0
P.H.O.L. - Thunder Bay	711	82	17	9	108	45	709	54	709	0	0	1	0	0	709	12	698	42	661	37	649	0
P.H.O.L. - Sudbury	638	29	14	4	47	15	633	45	633	0	0	1	0	0	633	9	623	11	561	28	550	0
P.H.O.L. - Hamilton	4311	286	39	10	335	117	4184	157	4165	10	1	0	0	0	4165	67	4144	138	3570	334	3545	0
P.H.O.L. - Peterborough	1077	66	4	1	71	10	1067	33	1066	3	0	0	0	0	1065	9	1061	47	811	71	804	0
St. Joseph's - Hamilton	22385	0	0	1617	1617	806	22385	1268	22385	118	6	26	0	0	22385	266	22385	457	22385	1231	0	0
Province of Ontario	82595	2570	465	3462	6497	2588	81381	4132	60254	258	18	70	53	5	59454	703	59774	1663	54352	3690	29251	138
Manitoba	13753	174	134	1329	1637	883	13360	868	3393	45	8	4	8	0	3393	55	2365	44	3393	478	2365	76
Regina	11761	43	26	1193	1262	663	11770	1037	4520	148	11	6	27	0	4520	81	4443	193	4520	775	4520	145
Saskatoon	4455	0	0	318	318	235	4455	182	4519	98	12	6	7	0	4519	66	4522	27	4519	530	4519	45
Province of Saskatchewan	16216	43	26	1511	1580	898	16225	1219	9039	246	23	12	34	0	9039	147	8965	220	9039	1305	9039	190
Province of Alberta	48905	1736	1286	1346	4368	3410	41462	0	41462	487	89	94	249	0	41462	589	41462	1535	41462	4827	41462	1572
Prairies	78874	1953	1446	4186	7585	5191	71047	2087	53894	778	120	110	291	0	53894	791	52792	1799	53894	6610	52866	1838
British Columbia	63882	277	244	1847	4086	2571	63526	2725	13654	183	55	37	47	76	13651	137	13586	650	12946	1639	6832	302
Yukon	5706	4	8	55	73	45	5706	23	N.A.	N.A.	N.A.	N.A.	N.A.	N.A.	N.A.	N.A.	N.A.	N.A.	N.A.	N.A.	N.A.	N.A.
Northwest Territories	1309	90	19	1	110	191	1298	0	1298	14	2	13	13	0	1298	20	1298	85	1298	168	1298	72
Nunavut	643	5	14	42	61	55	640	34	640	22	3	1	4	0	640	19	640	11	640	98	158	10
Territories	7658	99	41	98	244	291	7644	57	1938	36	5	14	17	0	1938	39	1938	96	1938	266	1456	82
CANADA	358364	4970	2260	23896	32850	22797	341667	18584	159812	1637	214	281	454	81	159094	2442	157183	4710	134003	12927	113419	2785

Specimens from YT, NT and NU are sent to reference laboratories in other provinces and reported results reflect specimens identified as originating from YT, NT or NU.

Results from British Columbia comprise of specimens from the following sites: BC Children's and Women's Hospital, Children's and Women's Hospital Laboratory, Fraser Health Medical Microbiology Laboratory, Island Health, Providence Health Care, Powell River Hospital, St. Paul's Hospital, Vancouver General Hospital, Victoria General Hospital, Victoria Coastal Health, BCCDC P

Delays in the reporting of data may cause data to change retrospectively. Due to reporting delays, the sum of weekly report totals do not add up to cumulative totals.

For BC, only data from subtyped influenza A specimens are included in the weekly number of influenza detections and so the sum of A(H1N1)pdm09, A(H3), and A(UnS) positive results may not equal the sum of total Flu A positive results.

Figure 1: Number positive laboratory tests for other respiratory viruses by report week, Canada, 2019-20

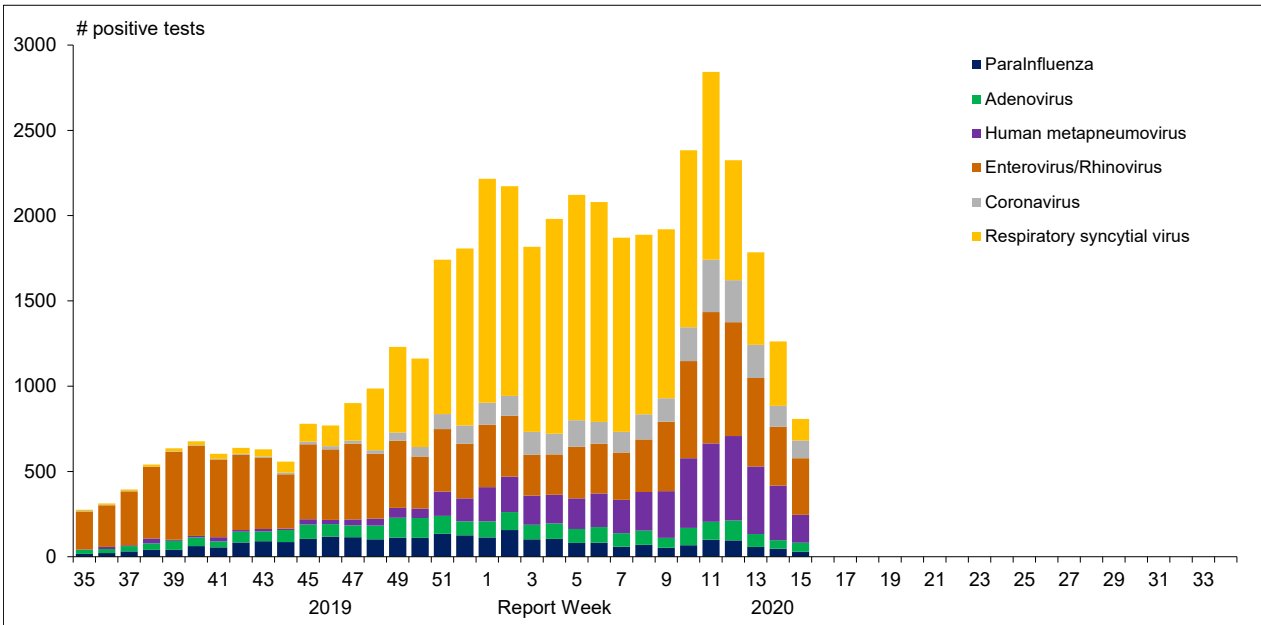


Figure 2 : Positive Influenza Tests (%) in Canada by Region by Week of Report

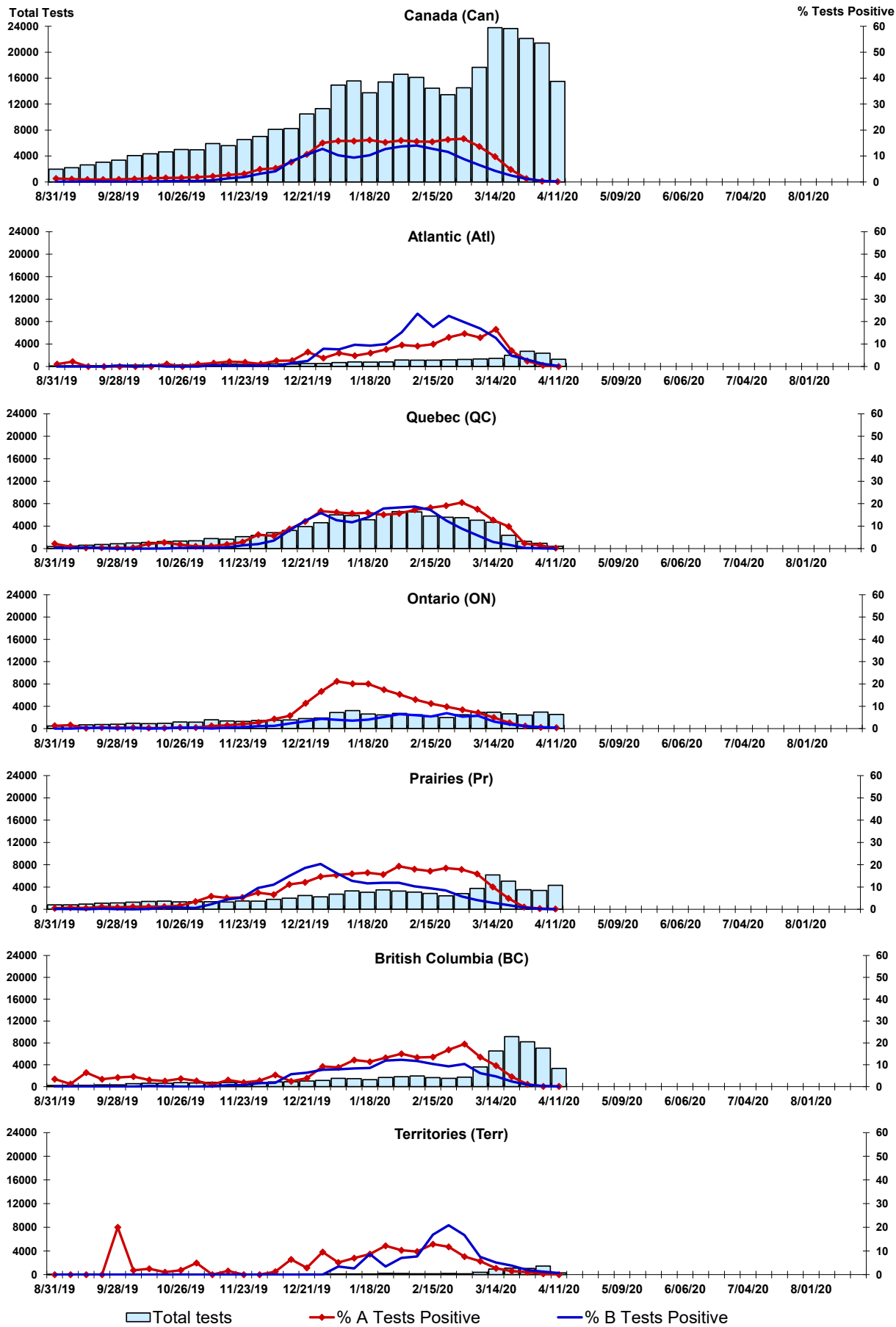


Figure 3: Positive Respiratory syncytial virus (RSV) Tests (%) in Canada by Region by Week of Report

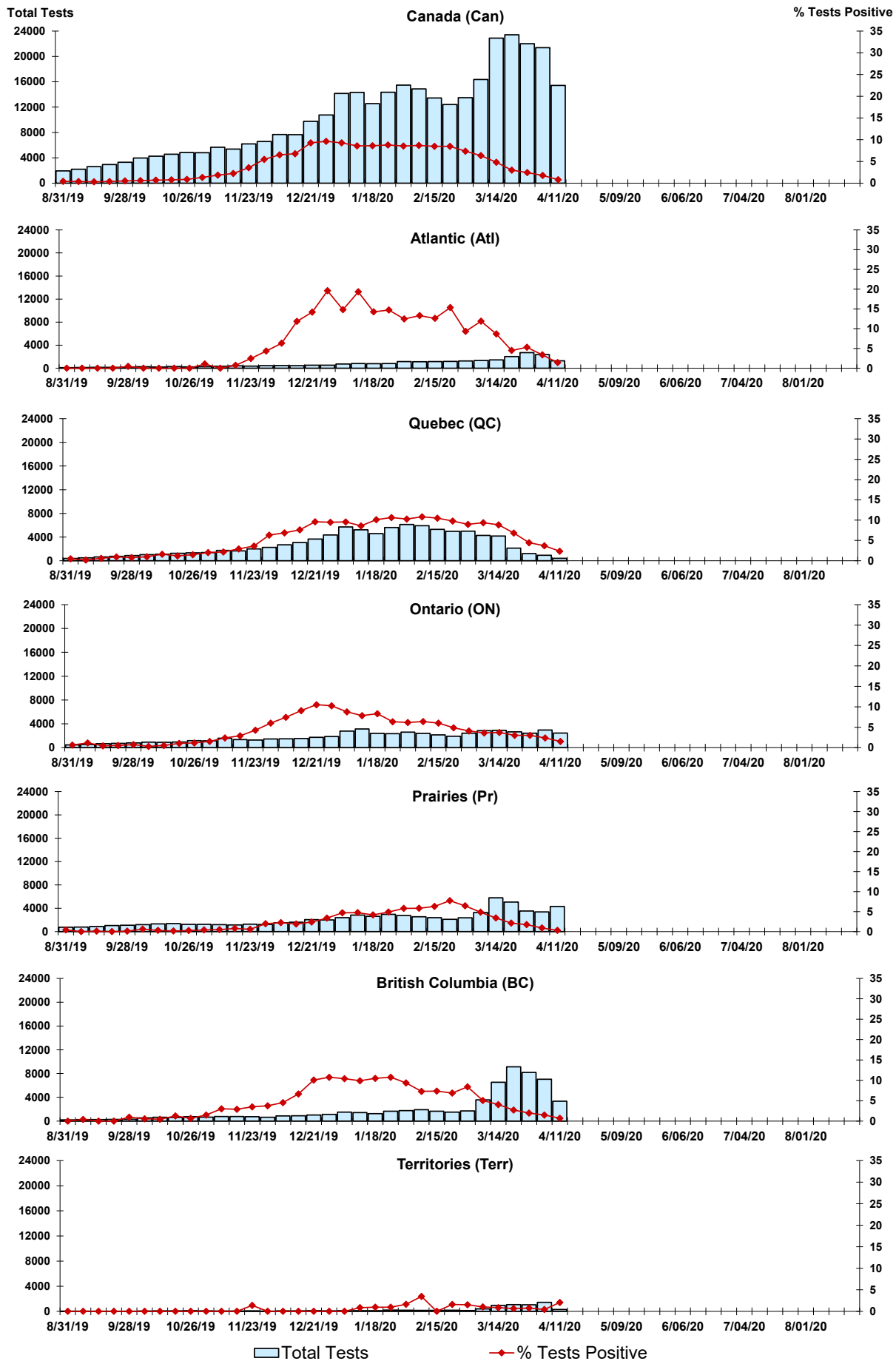


Figure 4: Positive Parainfluenza (PIV) Tests (%) in Canada by Region by Week of Report

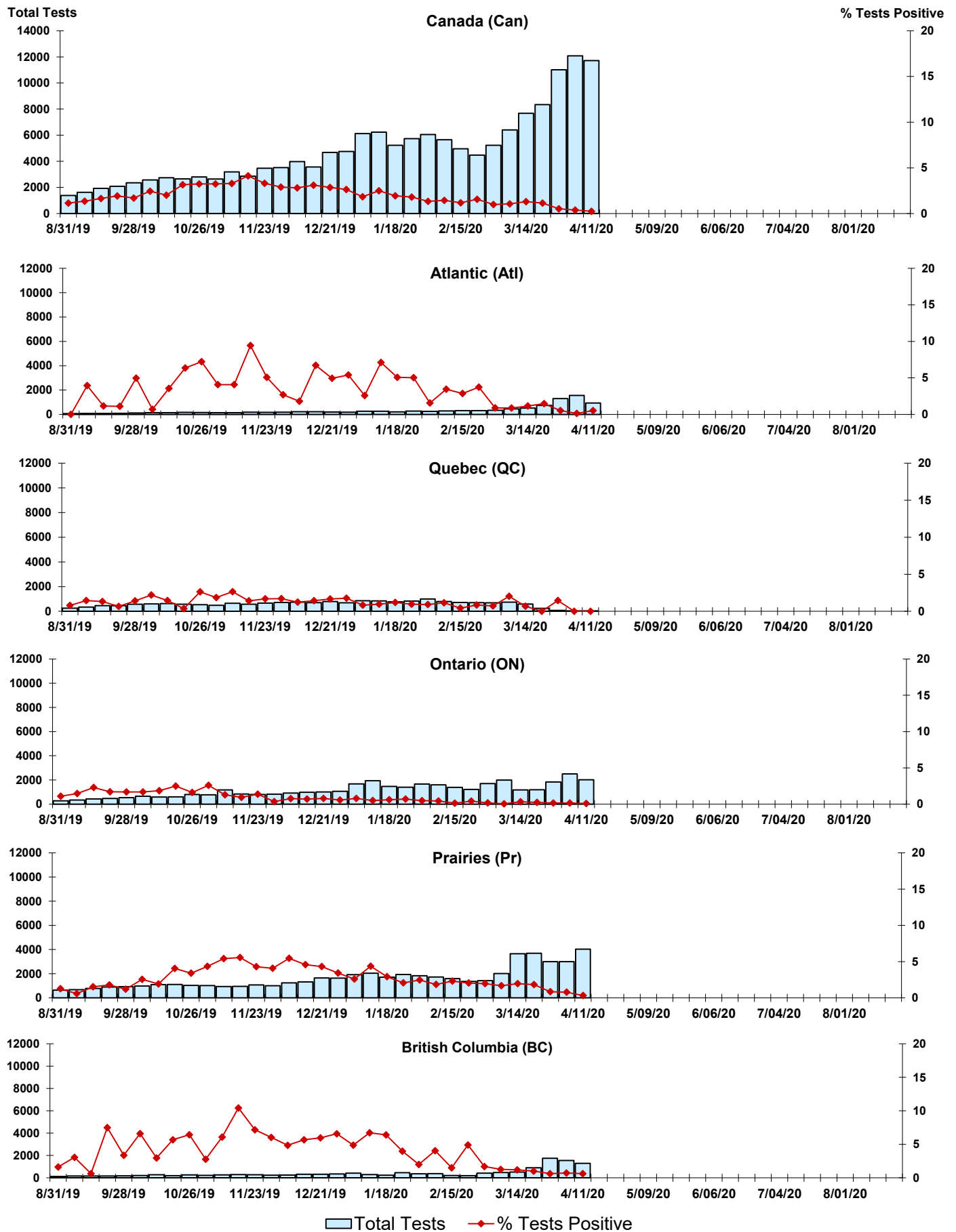


Figure 5: Positive Adenovirus (adeno) Tests (%) in Canada by Region by Week of Report

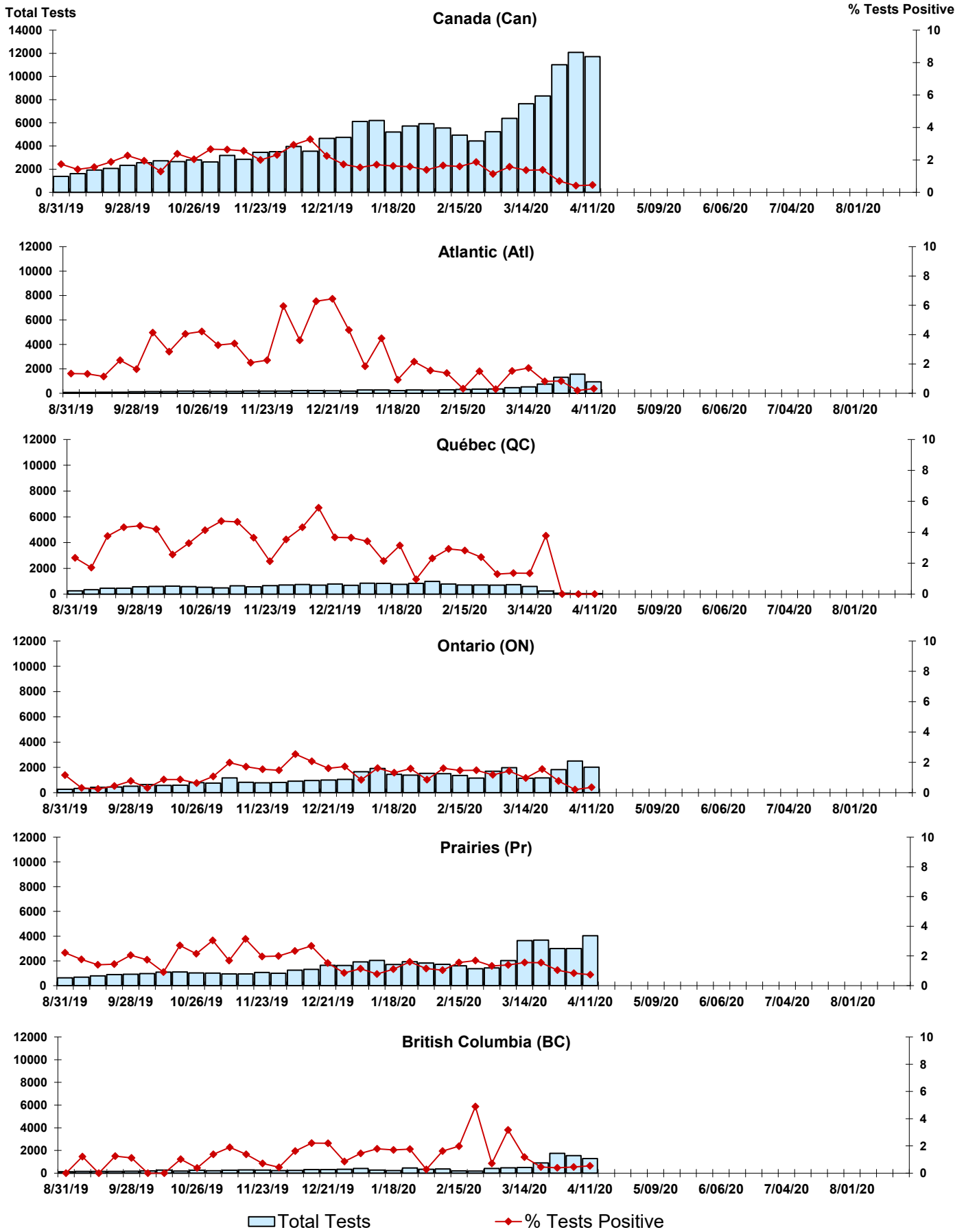


Figure 6: Positive human metapneumovirus (hMPV) Tests (%) in Canada by Region by Week of Report

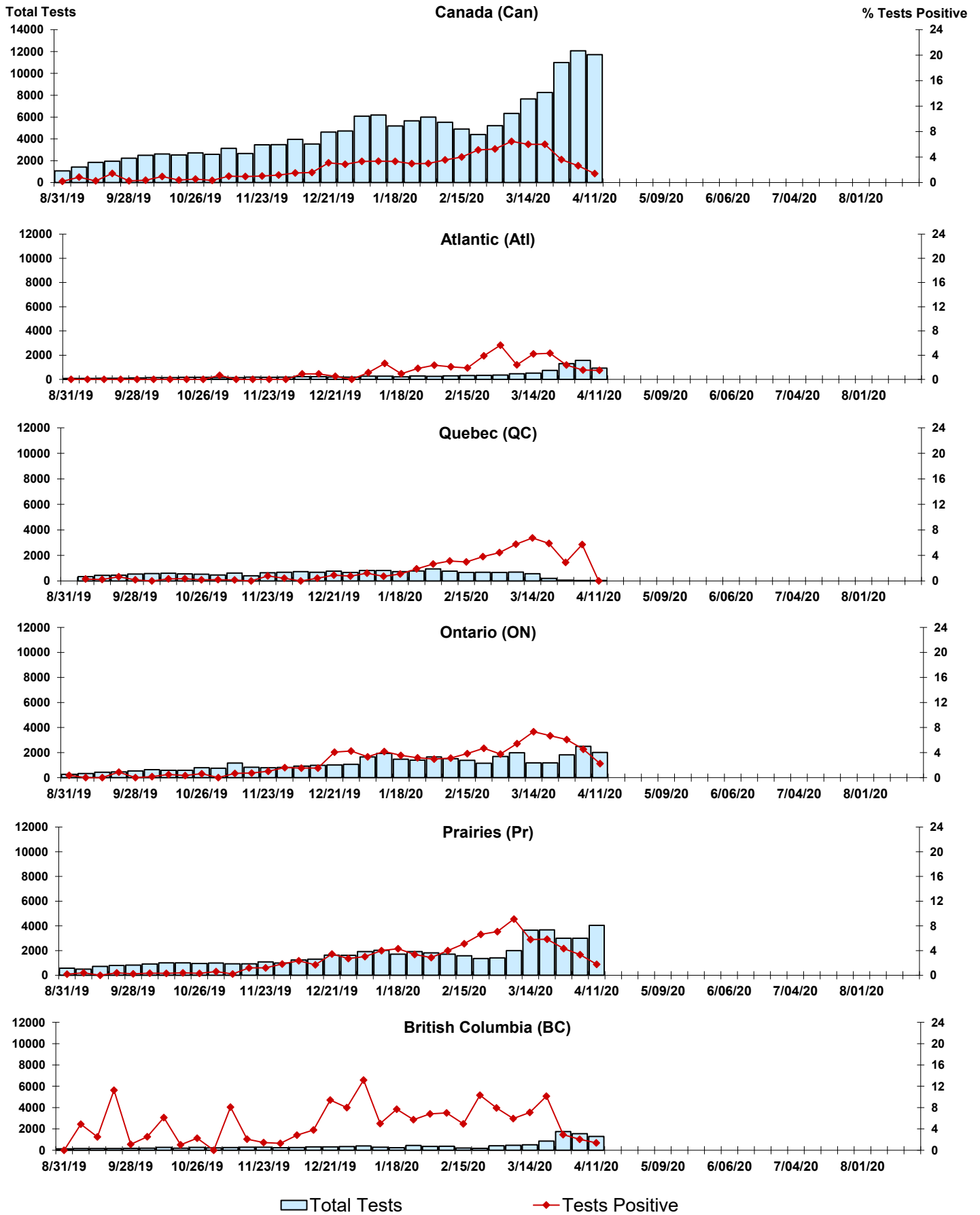


Figure 7: Positive Enterovirus/Rhinovirus (entero/rhino) Tests (%) in Canada by Region by Week of Report

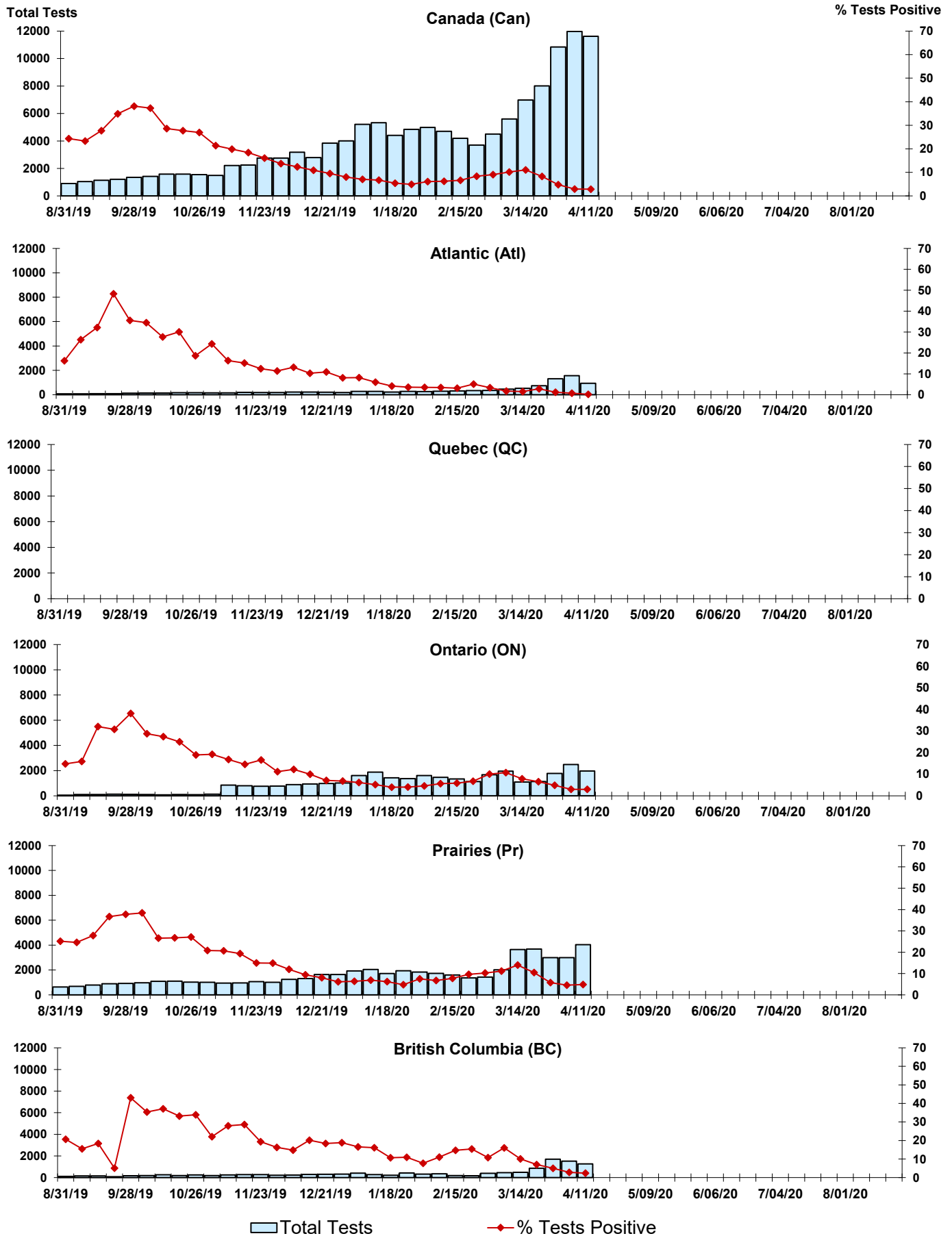
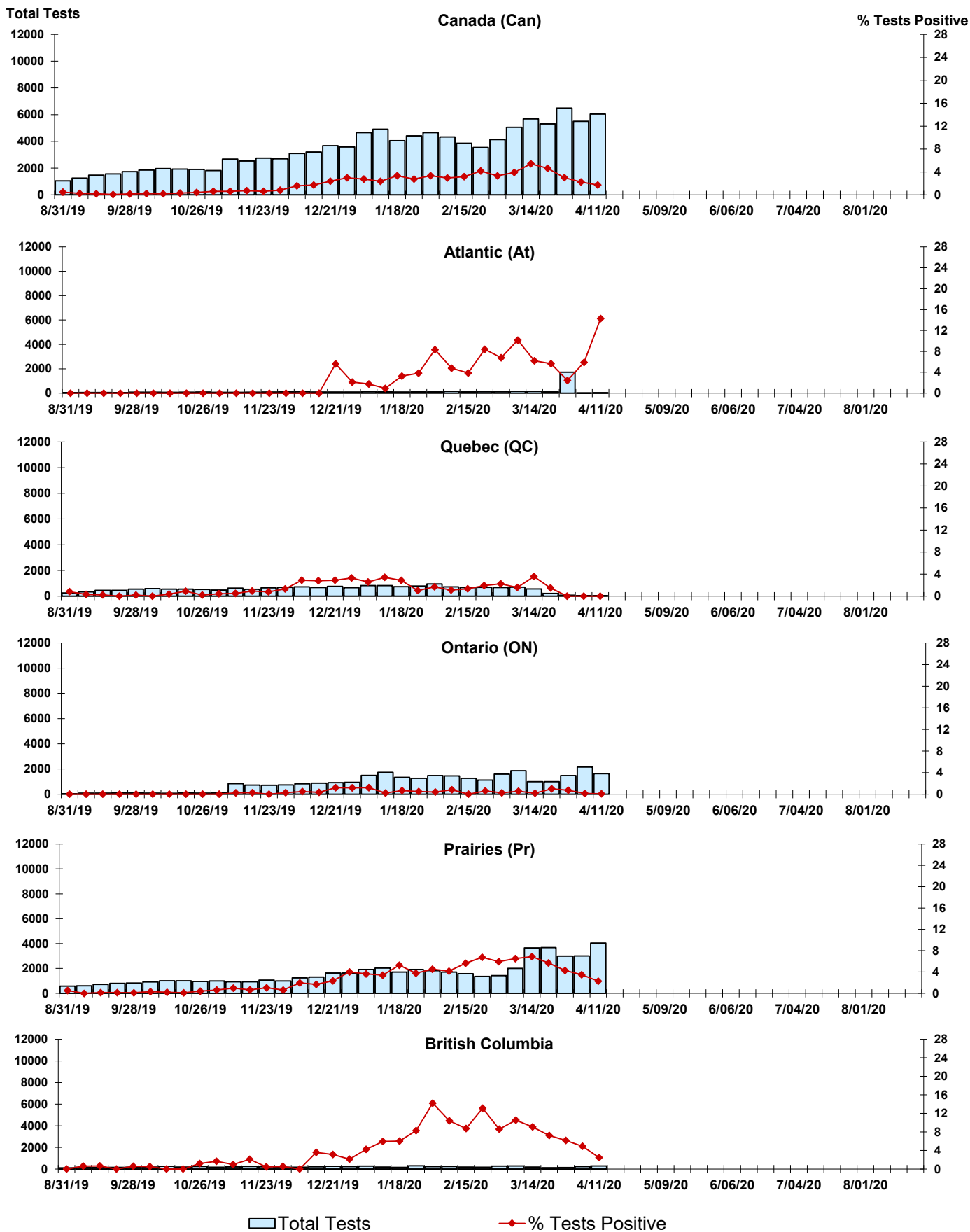


Figure 8: Positive Coronavirus (coron) Tests (%) in Canada by Region by Week of Report



Abbreviations:

A(H1N1)pdm09: Influenza A(H1N1)pdm09

A(H3): Influenza A(H3N2)

A (UnS): Influenza A (Unsubtyped)

Adeno: Adenovirus

CHEO: Children's Hospital of Eastern Ontario

Coron: Coronavirus

Entero: Enterovirus

hMPV: human metapneumovirus

HSC: Health Sciences Centre

N.A.: Not Applicable

P.H.L.: Public Health Laboratory

P.H.O.L.: Public Health Ontario Laboratory

PIV: Parainfluenza

Rhino: Rhinovirus

RSV: Respiratory syncytial virus

UHN: University Health Network

Notes:

Specimens from Yukon (YT), Northwest Territories (NT) and Nunavut (NU) are sent to reference laboratories in other provinces. Results reported for the Territories reflect the number of specimens that are identified as originating from YT, NT or NU.

Delays in the reporting of data may cause data to change retrospectively.

Due to reporting delays, the sum of weekly report totals do not add up to cumulative totals.

