

# Respiratory Virus Report, Week 20 - ending May 16, 2020

The Respiratory Virus Detection Surveillance System collects data from select laboratories across Canada on the number of tests performed and the number of tests positive for influenza and other respiratory viruses. Data are reported on a weekly basis year-round to the Centre for Immunization and Respiratory Infectious Diseases (CIRID), Public Health Agency of Canada. These data are also summarized in the weekly FluWatch report.

**In this Respiratory Virus Report, the number of detections of coronavirus reflects only seasonal human coronaviruses, not the novel pandemic coronavirus (SARS-CoV2) that causes COVID-19. For information on COVID-19, see the [Coronavirus disease \(COVID-19\): Outbreak](#)**

**Table 1: Respiratory Virus Detections/Isolations for the week ending May 16, 2020 (Reporting Week 202020)**

Reporting Laboratory	Flu Tested	A(H1N1)pdm09 Positive	A(H3) Positive	A(UnS) Positive	Total Flu A Positive	Total Flu B Positive	RSV Tested	RSV Positive	PIV Tested	PIV 1 Positive	PIV 2 Positive	PIV 3 Positive	PIV 4 Positive	Other PIV Positive	Adeno Tested	Adeno Positive	hMPV Tested	hMPV Positive	Entero/Rhino Tested	Entero/Rhino Positive	Coron Tested	Coron Positive
Newfoundland	456	0	0	0	0	0	456	0	456	3	0	0	0	0	456	0	456	0	456	0	N.A.	N.A.
Prince Edward Island	8	0	0	0	0	0	8	0	8	0	0	0	0	0	8	0	8	0	8	0	8	0
Nova Scotia	193	0	0	0	0	0	193	1	8	0	0	0	0	0	8	0	8	0	8	0	8	0
New Brunswick	27	0	0	0	0	0	27	0	21	0	0	0	0	0	21	0	21	0	21	1	21	0
<b>Atlantic</b>	<b>684</b>	<b>0</b>	<b>0</b>	<b>0</b>	<b>0</b>	<b>0</b>	<b>684</b>	<b>1</b>	<b>485</b>	<b>3</b>	<b>0</b>	<b>0</b>	<b>0</b>	<b>0</b>	<b>485</b>	<b>0</b>	<b>485</b>	<b>0</b>	<b>485</b>	<b>1</b>	<b>29</b>	<b>0</b>
Région Nord-Est	36	0	0	1	1	0	33	0	0	0	0	0	0	0	0	0	0	0	N.A.	N.A.	0	0
Québec-Chaudière-Appalaches	26	0	0	0	0	0	27	0	13	0	0	0	0	0	13	0	13	0	N.A.	N.A.	13	0
Centre-du-Québec	7	0	0	0	0	0	7	0	4	0	0	0	0	0	4	0	4	0	N.A.	N.A.	4	0
Montréal-Laval	71	0	0	0	0	0	71	0	33	0	0	0	0	0	33	0	33	0	N.A.	N.A.	33	1
Ouest du Québec	15	0	0	0	0	0	15	0	0	0	0	0	0	0	0	0	0	0	N.A.	N.A.	0	0
Montérégie	0	0	0	0	0	0	0	0	0	0	0	0	0	0	0	0	0	0	N.A.	N.A.	0	0
<b>Province of Québec</b>	<b>155</b>	<b>0</b>	<b>0</b>	<b>1</b>	<b>1</b>	<b>0</b>	<b>153</b>	<b>0</b>	<b>50</b>	<b>0</b>	<b>0</b>	<b>0</b>	<b>0</b>	<b>0</b>	<b>50</b>	<b>0</b>	<b>50</b>	<b>0</b>	<b>N.A.</b>	<b>N.A.</b>	<b>50</b>	<b>1</b>
P.H.O.L. - Ottawa	23	0	0	0	0	0	23	0	23	0	0	0	0	0	23	1	23	1	23	0	23	0
CHEO - Ottawa	86	0	0	2	2	2	86	0	6	0	0	0	0	0	6	0	6	0	6	0	6	0
P.H.O.L. - Kingston	42	0	0	0	0	0	42	1	42	0	0	0	0	0	42	1	42	1	42	1	42	0
UHN / Mount Sinai Hospital	5	0	0	0	0	0	5	0	5	0	0	0	0	0	0	0	5	0	0	0	N.A.	N.A.
P.H.O.L. - Toronto	249	0	0	0	0	0	249	0	249	0	0	0	0	0	249	1	249	0	249	4	249	0
Sick Kids Hospital - Toronto	0	0	0	0	0	0	0	0	0	0	0	0	0	0	0	0	0	0	0	0	0	0
Sunnybrook & Women's College HSC	0	0	0	0	0	0	0	0	0	0	0	0	0	0	0	0	0	0	0	0	0	0
P.H.O.L. - Sault Ste. Marie	14	0	0	0	0	0	10	0	10	0	0	0	0	0	10	0	10	1	10	0	10	0
P.H.O.L. - Timmins	2	0	0	0	0	0	2	0	2	0	0	0	0	0	2	0	2	0	2	0	2	0
St. Joseph's - London	37	0	0	0	0	0	37	0	34	0	0	0	0	0	34	1	34	0	17	0	17	0
P.H.O.L. - London	46	0	0	0	0	0	46	0	46	0	0	0	0	0	46	0	46	0	46	0	46	0
P.H.O.L. - Orillia	11	0	0	0	0	0	11	0	11	0	0	0	0	0	11	0	11	0	11	0	11	0
P.H.O.L. - Thunder Bay	34	0	0	0	0	0	34	1	34	0	0	0	0	0	34	1	34	0	34	3	34	0
P.H.O.L. - Sudbury	23	0	0	0	0	0	23	0	23	0	0	0	0	0	23	0	23	3	23	0	23	0
P.H.O.L. - Hamilton	39	0	0	0	0	0	36	0	36	0	0	0	0	0	36	0	36	0	36	0	36	0
P.H.O.L. - Peterborough	14	0	0	0	0	0	14	0	14	0	0	0	0	0	14	0	14	0	14	1	14	0
St. Joseph's - Hamilton	779	0	0	0	0	0	779	2	779	0	0	0	0	0	779	0	779	0	779	2	0	0
<b>Province of Ontario</b>	<b>1404</b>	<b>0</b>	<b>0</b>	<b>2</b>	<b>2</b>	<b>2</b>	<b>1397</b>	<b>4</b>	<b>1314</b>	<b>0</b>	<b>0</b>	<b>0</b>	<b>0</b>	<b>0</b>	<b>1309</b>	<b>5</b>	<b>1314</b>	<b>6</b>	<b>1292</b>	<b>11</b>	<b>513</b>	<b>0</b>
Province of Manitoba	769	0	0	0	0	0	769	8	70	0	0	0	0	0	70	2	59	0	70	1	0	0
Regina	179	0	0	0	0	2	179	1	140	0	1	0	0	0	140	1	140	0	140	3	140	2
Saskatoon	0	0	0	0	0	0	0	0	0	0	0	0	0	0	0	0	0	0	0	0	0	0
Province of Saskatchewan	179	0	0	0	0	2	179	1	140	0	1	0	0	0	140	1	140	0	140	3	140	2
Province of Alberta	5385	0	0	0	0	3	5385	0	5385	1	0	0	1	0	5385	34	5385	3	5385	85	5385	3
<b>Prairies</b>	<b>6333</b>	<b>0</b>	<b>0</b>	<b>0</b>	<b>0</b>	<b>5</b>	<b>6333</b>	<b>9</b>	<b>5595</b>	<b>1</b>	<b>1</b>	<b>0</b>	<b>1</b>	<b>0</b>	<b>5595</b>	<b>37</b>	<b>5584</b>	<b>3</b>	<b>5595</b>	<b>89</b>	<b>5525</b>	<b>5</b>
<b>British Columbia</b>	<b>2944</b>	<b>0</b>	<b>0</b>	<b>0</b>	<b>0</b>	<b>0</b>	<b>2942</b>	<b>1</b>	<b>1845</b>	<b>1</b>	<b>2</b>	<b>1</b>	<b>0</b>	<b>2</b>	<b>1845</b>	<b>7</b>	<b>1845</b>	<b>4</b>	<b>1826</b>	<b>20</b>	<b>243</b>	<b>1</b>
Yukon	205	0	0	0	0	0	205	0	N.A.	N.A.	N.A.	N.A.	N.A.	N.A.	N.A.	N.A.	N.A.	N.A.	N.A.	N.A.	N.A.	N.A.
Northwest Territories	22	0	0	0	0	0	22	0	22	0	0	0	0	0	22	0	22	0	22	3	22	0
Nunavut	56	0	0	0	0	0	56	2	56	0	0	0	0	0	56	0	56	2	56	4	11	4
<b>Territories</b>	<b>283</b>	<b>0</b>	<b>0</b>	<b>0</b>	<b>0</b>	<b>0</b>	<b>283</b>	<b>2</b>	<b>78</b>	<b>0</b>	<b>0</b>	<b>0</b>	<b>0</b>	<b>0</b>	<b>78</b>	<b>0</b>	<b>78</b>	<b>2</b>	<b>78</b>	<b>7</b>	<b>33</b>	<b>4</b>
<b>CANADA</b>	<b>11803</b>	<b>0</b>	<b>0</b>	<b>3</b>	<b>3</b>	<b>7</b>	<b>11792</b>	<b>17</b>	<b>9367</b>	<b>5</b>	<b>3</b>	<b>1</b>	<b>1</b>	<b>2</b>	<b>9362</b>	<b>49</b>	<b>9356</b>	<b>15</b>	<b>9276</b>	<b>128</b>	<b>6393</b>	<b>11</b>

Specimens from Yukon (YT), Northwest Territories (NT) and Nunavut (NU) are sent to reference laboratories in other provinces and reported results reflect specimens identified as originating from YT, NT or NU.

Results from British Columbia comprise of specimens from the following sites: BC Children's and Women's Hospital, Children's and Women's Hospital Laboratory, Fraser Health Medical Microbiology Laboratory, Island Health, Providence Health Care, Powell River Hospital, St. Paul's Hospital, Vancouver General Hospital, Victoria General Hospital, Victoria Coastal Health, BCCDC Public Health Laboratory, Interior Health Authority sites and Northern Health Authority sites.

Delays in the reporting of data may cause data to change retrospectively.

For BC, only data from subtyped influenza A specimens are included in the weekly number of influenza detections and so the sum of A(H1N1)pdm09, A(H3), and A(UnS) positive results may not equal the sum of total Flu A positive results.

Table 2: Respiratory Virus Detections/Isolations for the period August 31, 2019 - May 16, 2020 (Reporting Weeks 201935-202020)

Reporting Laboratory	Flu Tested	A(H1N1)pdm09 Positive	A(H3) Positive	A(UnS) Positive	Total Flu A Positive	Total Flu B Positive	RSV Tested	RSV Positive	PIV Tested	PIV 1 Positive	PIV 2 Positive	PIV 3 Positive	PIV 4 Positive	Other PIV Positive	Adeno Tested	Adeno Positive	hMPV Tested	hMPV Positive	Entero/Rhino Tested	Entero/Rhino Positive	Coron Tested	Coron Positive
Newfoundland	10859	8	33	166	207	512	10859	330	10859	147	2	11	0	0	10859	112	10859	189	10859	353	N.A.	N.A.
Prince Edward Island	1262	0	0	144	144	78	1262	146	48	1	0	0	1	0	48	0	46	0	48	16	48	2
Nova Scotia	6564	3	2	196	201	248	6666	625	538	13	1	3	5	0	572	11	572	11	572	77	585	14
New Brunswick	11647	61	29	957	1047	1292	11588	1077	2348	53	7	0	13	0	2348	62	2348	16	2348	286	6348	125
<b>Atlantic</b>	<b>30332</b>	<b>72</b>	<b>64</b>	<b>1463</b>	<b>1599</b>	<b>2130</b>	<b>30375</b>	<b>2178</b>	<b>13793</b>	<b>214</b>	<b>10</b>	<b>14</b>	<b>19</b>	<b>0</b>	<b>13827</b>	<b>185</b>	<b>13825</b>	<b>216</b>	<b>13827</b>	<b>732</b>	<b>6981</b>	<b>141</b>
Région Nord-Est	9183	0	0	1136	1136	1323	7870	644	0	0	0	0	0	0	0	0	0	0	N.A.	N.A.	0	0
Québec-Chaudière-Appalaches	13991	0	0	1900	1900	1829	13870	1318	2692	31	4	3	14	0	2740	80	2137	24	N.A.	N.A.	2080	35
Centre-du-Québec	18967	0	0	2909	2909	2395	15273	1385	31	0	0	1	0	0	31	0	31	0	N.A.	N.A.	31	1
Montréal-Laval	37913	0	0	4021	4021	2411	36759	2398	16754	144	4	35	13	0	16754	514	16291	270	N.A.	N.A.	16601	261
Ouest du Québec	12560	0	0	1745	1745	1278	11712	1089	0	0	0	0	0	0	0	0	0	0	N.A.	N.A.	0	0
Montérégie	8520	0	0	1133	1133	791	8292	610	0	0	0	0	0	0	0	0	0	0	N.A.	N.A.	0	0
<b>Province of Québec</b>	<b>101134</b>	<b>0</b>	<b>0</b>	<b>12844</b>	<b>12844</b>	<b>10027</b>	<b>93776</b>	<b>7444</b>	<b>19477</b>	<b>175</b>	<b>8</b>	<b>39</b>	<b>27</b>	<b>0</b>	<b>19525</b>	<b>594</b>	<b>18459</b>	<b>294</b>	<b>N.A.</b>	<b>N.A.</b>	<b>18712</b>	<b>297</b>
P.H.O.L. - Ottawa	1790	108	61	3	172	71	1781	86	1756	2	0	0	0	0	1756	18	1742	61	1600	78	1585	0
CHEO - Ottawa	8944	1	0	656	657	446	8944	683	911	17	0	5	10	5	911	18	911	20	914	164	902	28
P.H.O.L. - Kingston	1386	62	27	4	93	23	1364	68	1360	1	0	0	0	0	1360	17	1351	60	1191	63	1178	0
UHN / Mount Sinai Hospital	11985	9	0	651	660	218	11985	348	597	7	2	10	2	0	0	0	674	16	0	0	N.A.	N.A.
P.H.O.L. - Toronto	17270	1348	144	36	1528	355	16806	416	16727	34	0	3	0	0	16727	154	16507	440	14183	797	13943	0
Sick Kids Hospital - Toronto	2407	104	13	99	216	168	1936	208	1936	26	5	8	27	0	1936	53	1936	48	1936	366	1936	92
Sunnybrook & Women's College HSC	3456	0	0	124	124	25	3456	64	3456	9	0	17	0	0	3197	11	3316	35	3316	66	120	0
P.H.O.L. - Sault Ste. Marie	538	20	0	0	20	8	521	28	522	1	0	0	0	0	522	5	519	33	471	14	468	0
P.H.O.L. - Timmins	681	65	3	2	70	12	649	32	652	0	0	0	0	0	652	1	649	30	624	5	619	0
St. Joseph's - London	4572	0	0	238	238	114	4572	334	1538	19	4	3	14	0	1538	24	1538	33	798	111	745	22
P.H.O.L. - London	5204	309	112	9	430	145	5169	250	5155	8	0	0	0	0	5157	49	5117	180	4699	296	4649	0
P.H.O.L. - Orillia	1621	81	31	3	115	33	1618	89	1615	4	0	0	0	0	1615	8	1610	50	1424	81	1417	0
P.H.O.L. - Thunder Bay	1187	82	17	9	108	45	1185	63	1185	0	0	1	0	0	1185	14	1174	52	1137	53	1125	0
P.H.O.L. - Sudbury	885	29	14	4	47	15	879	45	880	0	0	1	0	0	880	9	870	14	808	28	797	0
P.H.O.L. - Hamilton	4972	286	39	12	337	117	4825	164	4806	10	1	0	0	0	4806	68	4785	139	4211	339	4186	0
P.H.O.L. - Peterborough	1185	66	4	1	71	10	1176	33	1175	3	0	0	0	0	1174	10	1170	47	920	75	913	0
St. Joseph's - Hamilton	28457	0	0	1617	1617	806	28457	1275	28457	119	6	26	0	0	28457	270	28457	461	28457	1275	0	0
<b>Province of Ontario</b>	<b>96540</b>	<b>2570</b>	<b>465</b>	<b>3468</b>	<b>6503</b>	<b>2611</b>	<b>95323</b>	<b>4186</b>	<b>72728</b>	<b>260</b>	<b>18</b>	<b>74</b>	<b>53</b>	<b>5</b>	<b>71873</b>	<b>729</b>	<b>72326</b>	<b>1719</b>	<b>66689</b>	<b>3811</b>	<b>34583</b>	<b>142</b>
Manitoba	19761	174	134	1339	1647	889	19368	1003	3817	48	8	4	8	0	3817	58	2740	59	3817	491	2365	76
Regina	12977	43	26	1193	1262	665	12986	1043	5285	148	14	6	30	0	5285	88	5208	205	5285	791	5285	149
Saskatoon	4455	0	0	318	318	235	4455	182	4519	98	12	6	7	0	4519	66	4522	27	4519	530	4519	45
Province of Saskatchewan	17432	43	26	1511	1580	900	17441	1225	9804	246	26	12	37	0	9804	154	9730	232	9804	1321	9804	194
Province of Alberta	76795	1738	1287	1346	4371	3416	69348	0	69348	494	98	98	263	0	69348	800	69348	1620	69348	5525	69348	1718
<b>Prairies</b>	<b>113988</b>	<b>1955</b>	<b>1447</b>	<b>4196</b>	<b>7598</b>	<b>5205</b>	<b>106157</b>	<b>2228</b>	<b>82969</b>	<b>788</b>	<b>132</b>	<b>114</b>	<b>308</b>	<b>0</b>	<b>82969</b>	<b>1012</b>	<b>81818</b>	<b>1911</b>	<b>82969</b>	<b>7337</b>	<b>81517</b>	<b>1988</b>
<b>British Columbia</b>	<b>78871</b>	<b>277</b>	<b>244</b>	<b>1849</b>	<b>4088</b>	<b>2573</b>	<b>78511</b>	<b>2770</b>	<b>21218</b>	<b>184</b>	<b>58</b>	<b>38</b>	<b>52</b>	<b>84</b>	<b>21215</b>	<b>160</b>	<b>21139</b>	<b>685</b>	<b>20458</b>	<b>1736</b>	<b>8036</b>	<b>312</b>
Yukon	7276	4	8	55	73	45	7276	23	N.A.	N.A.	N.A.	N.A.	N.A.	N.A.	N.A.	N.A.	N.A.	N.A.	N.A.	N.A.	N.A.	N.A.
Northwest Territories	1470	90	19	1	110	191	1459	0	1459	14	2	13	13	0	1459	21	1459	86	1459	182	1459	75
Nunavut	940	5	14	42	61	72	937	47	937	26	3	1	6	0	937	20	937	23	937	118	215	28
<b>Territories</b>	<b>9686</b>	<b>99</b>	<b>41</b>	<b>98</b>	<b>244</b>	<b>308</b>	<b>9672</b>	<b>70</b>	<b>2396</b>	<b>40</b>	<b>5</b>	<b>14</b>	<b>19</b>	<b>0</b>	<b>2396</b>	<b>41</b>	<b>2396</b>	<b>109</b>	<b>2396</b>	<b>300</b>	<b>1674</b>	<b>103</b>
<b>CANADA</b>	<b>430551</b>	<b>4973</b>	<b>2261</b>	<b>23918</b>	<b>32876</b>	<b>22854</b>	<b>413814</b>	<b>18876</b>	<b>212581</b>	<b>1661</b>	<b>231</b>	<b>293</b>	<b>478</b>	<b>89</b>	<b>211805</b>	<b>2721</b>	<b>209963</b>	<b>4934</b>	<b>186339</b>	<b>13916</b>	<b>151503</b>	<b>2983</b>

Specimens from YT, NT and NU are sent to reference laboratories in other provinces and reported results reflect specimens identified as originating from YT, NT or NU.

Results from British Columbia comprise of specimens from the following sites: BC Children's and Women's Hospital, Children's and Women's Hospital Laboratory, Fraser Health Medical Microbiology Laboratory, Island Health, Providence Health Care, Powell River Hospital, St. Paul's Hospital, Vancouver General Hospital, Victoria General Hospital, Victoria Coastal Health, BCCDC P

Delays in the reporting of data may cause data to change retrospectively. Due to reporting delays, the sum of weekly report totals do not add up to cumulative totals.

For BC, only data from subtyped influenza A specimens are included in the weekly number of influenza detections and so the sum of A(H1N1)pdm09, A(H3), and A(UnS) positive results may not equal the sum of total Flu A positive results.

Figure 1: Number positive laboratory tests for other respiratory viruses by report week, Canada, 2019-20

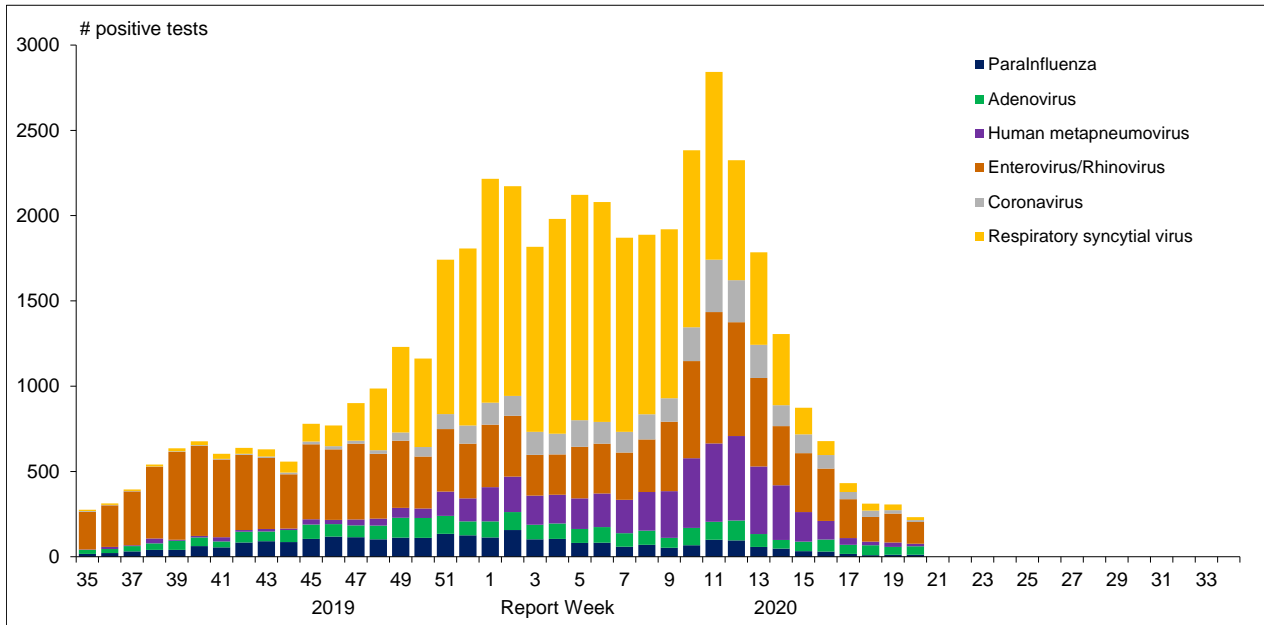


Figure 2 : Positive Influenza Tests (%) in Canada by Region by Week of Report

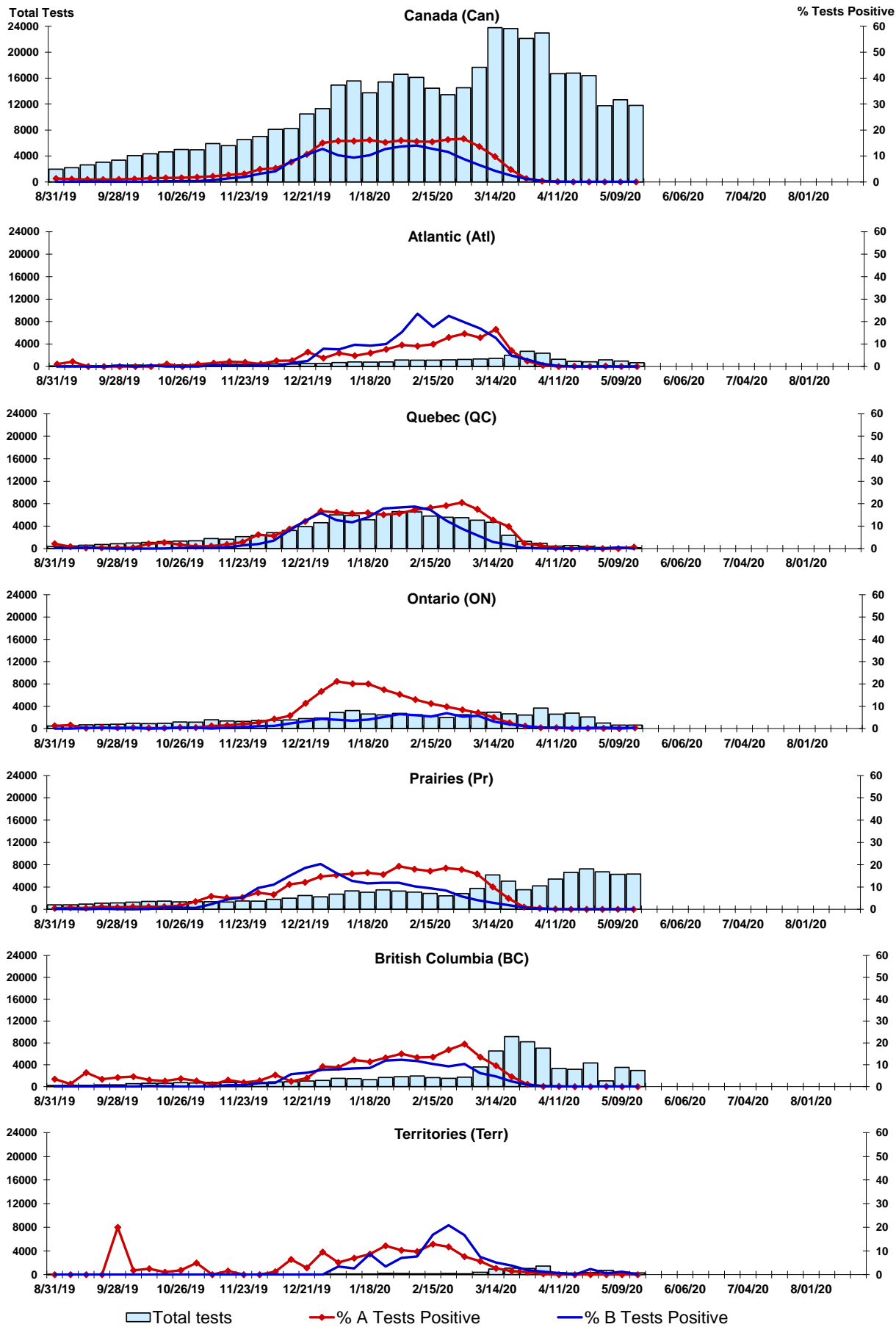


Figure 3: Positive Respiratory syncytial virus (RSV) Tests (%) in Canada by Region by Week of Report

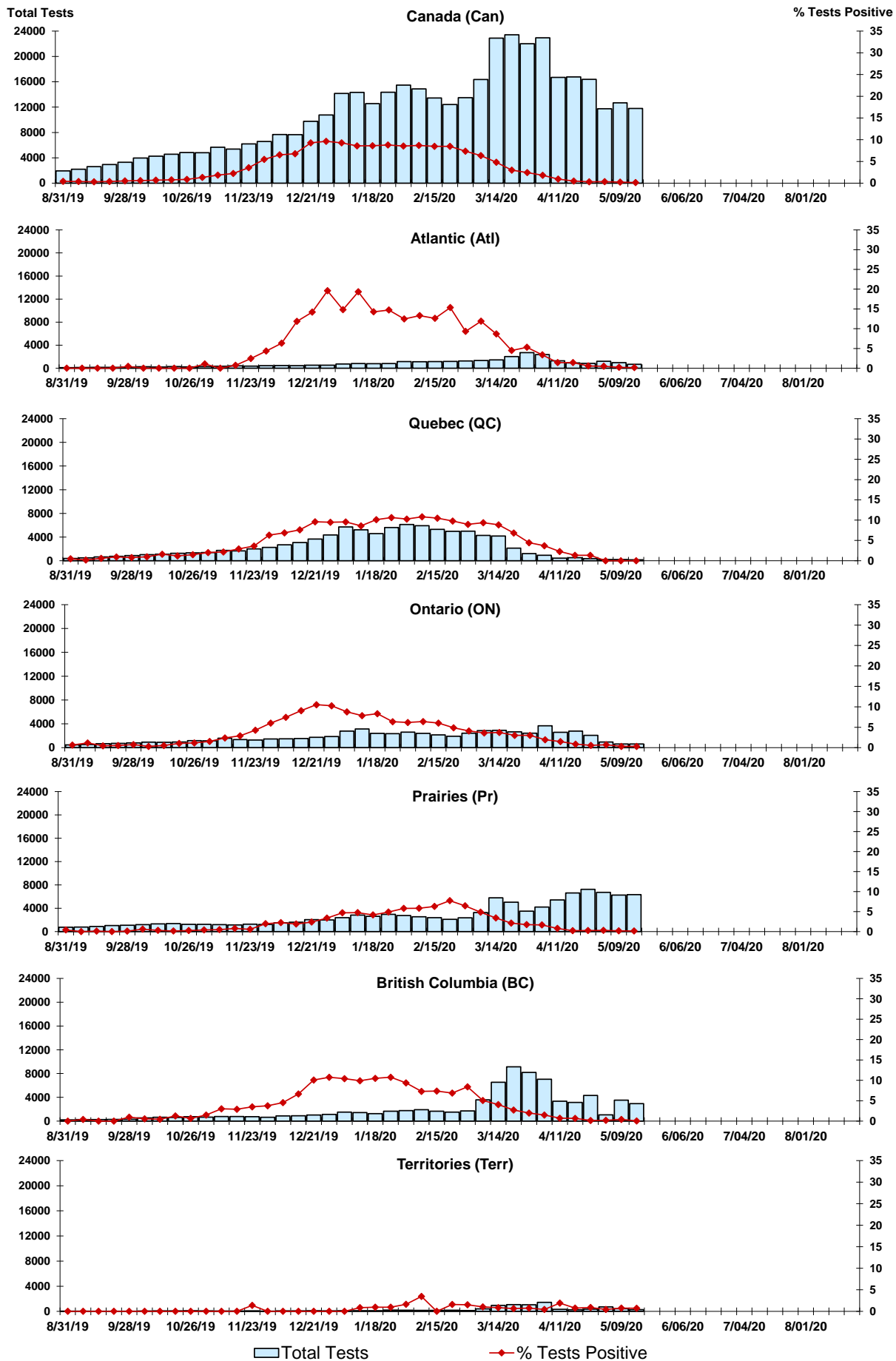


Figure 4: Positive Parainfluenza (PIV) Tests (%) in Canada by Region by Week of Report

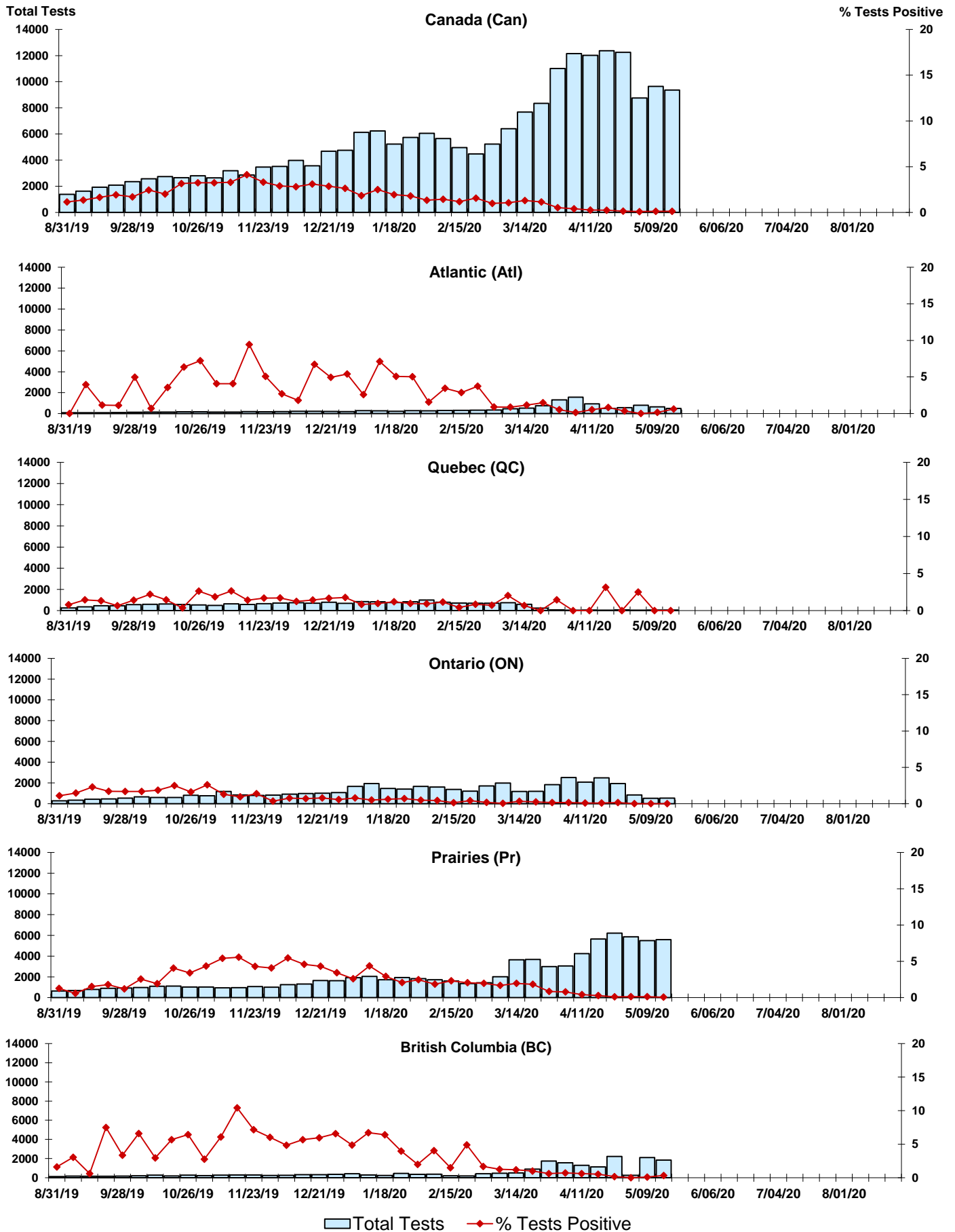


Figure 5: Positive Adenovirus (adeno) Tests (%) in Canada by Region by Week of Report

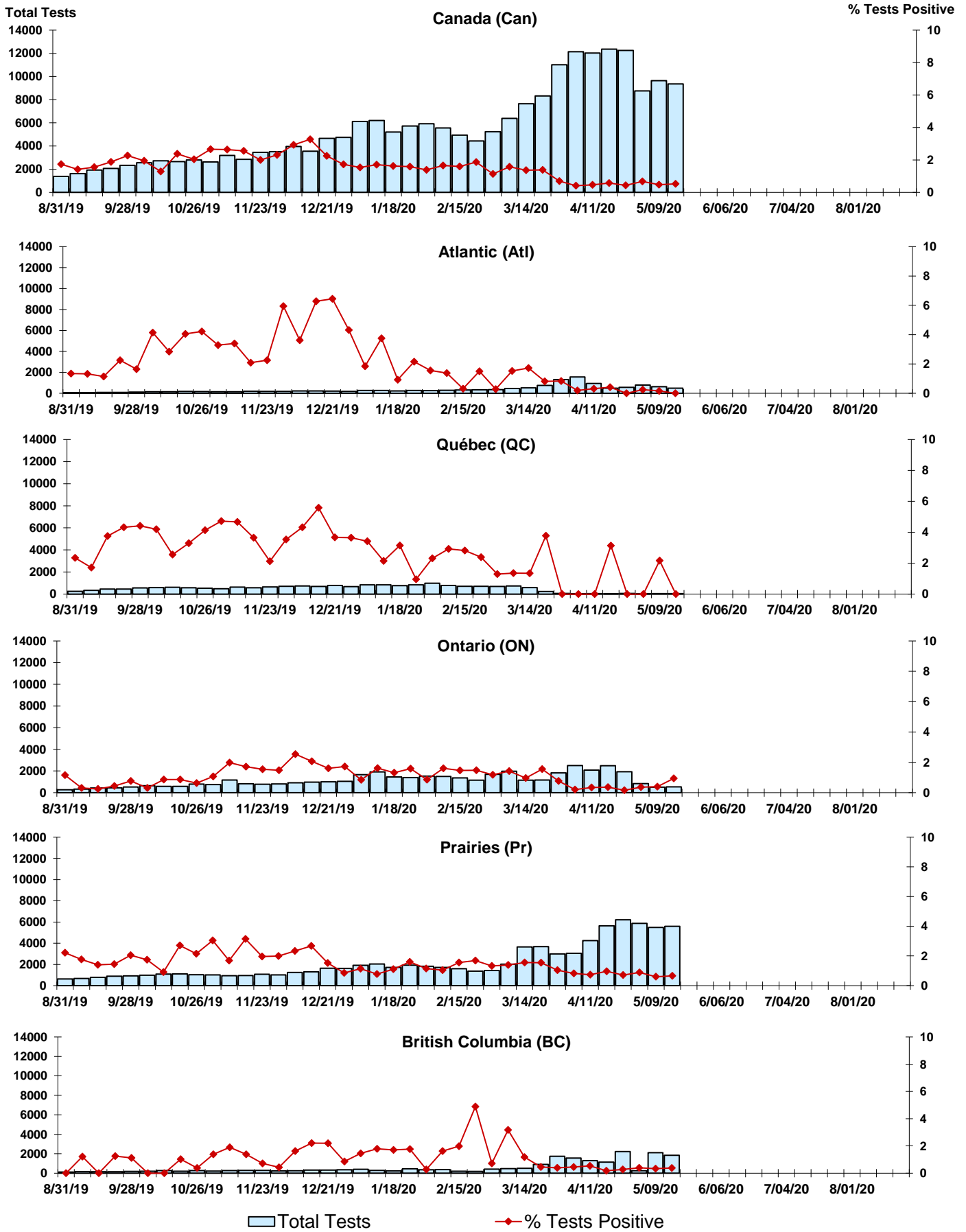


Figure 6: Positive human metapneumovirus (hMPV) Tests (%) in Canada by Region by Week of Report

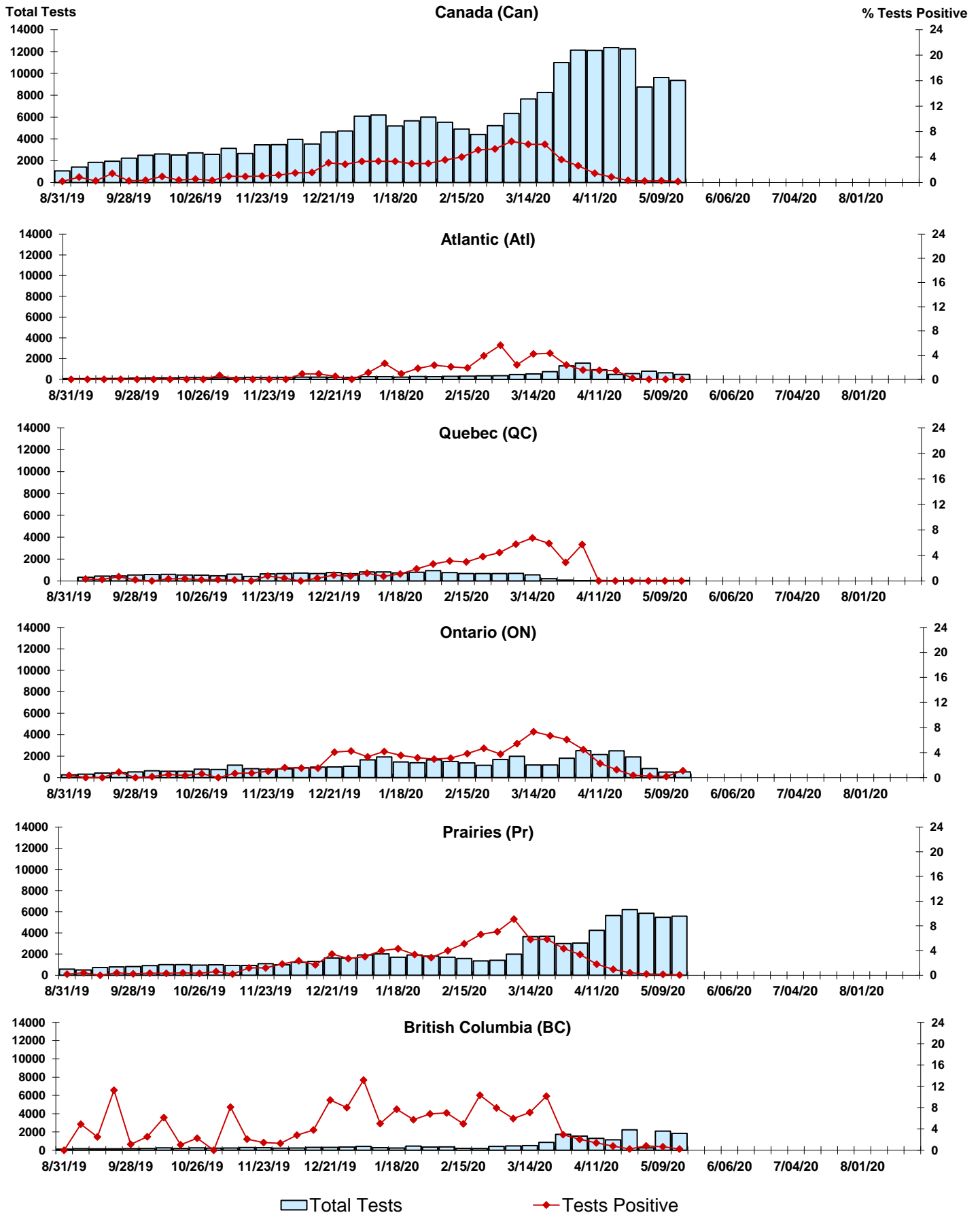




Figure 7: Positive Enterovirus/Rhinovirus (entero/rhino) Tests (%) in Canada by Region by Week of Report

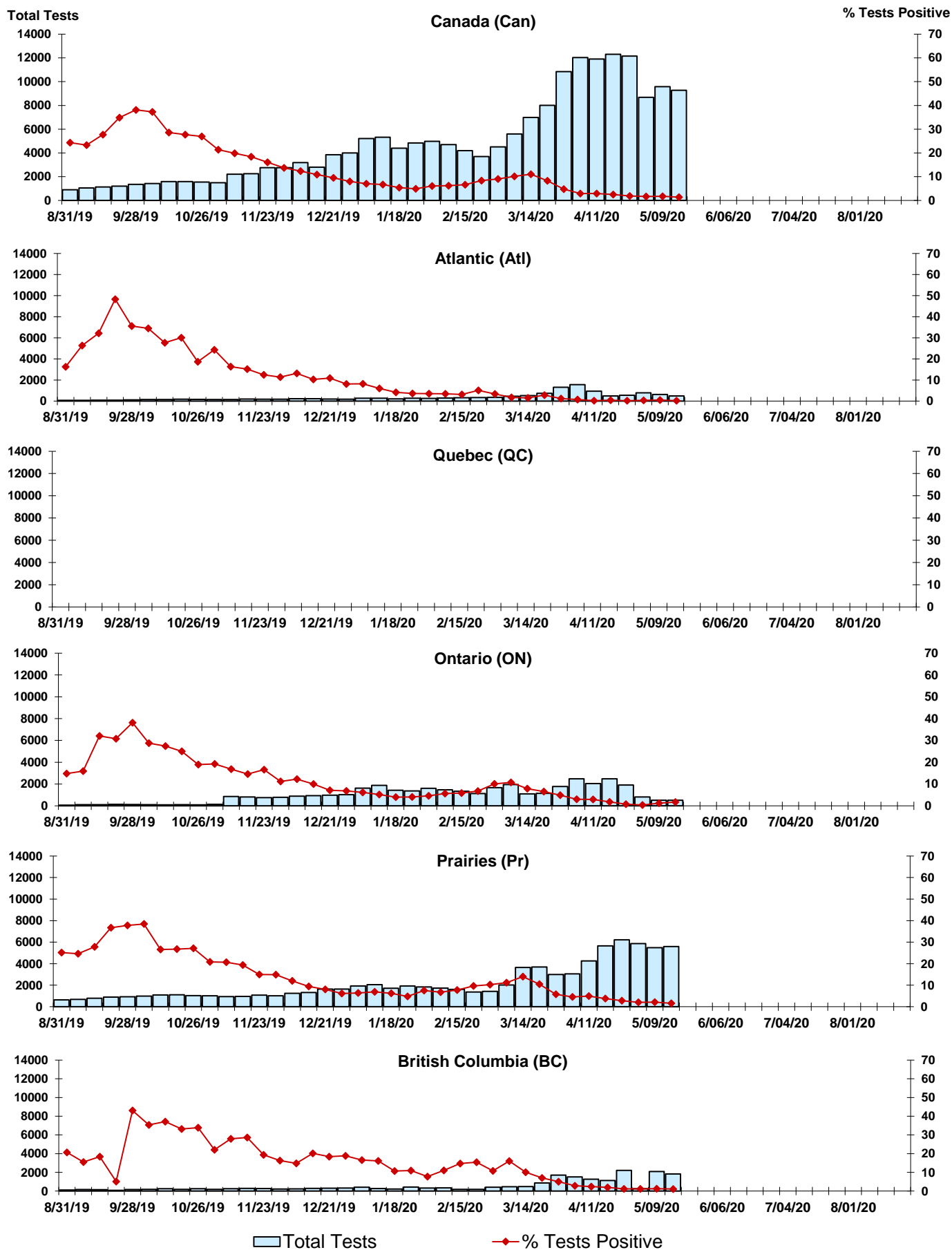
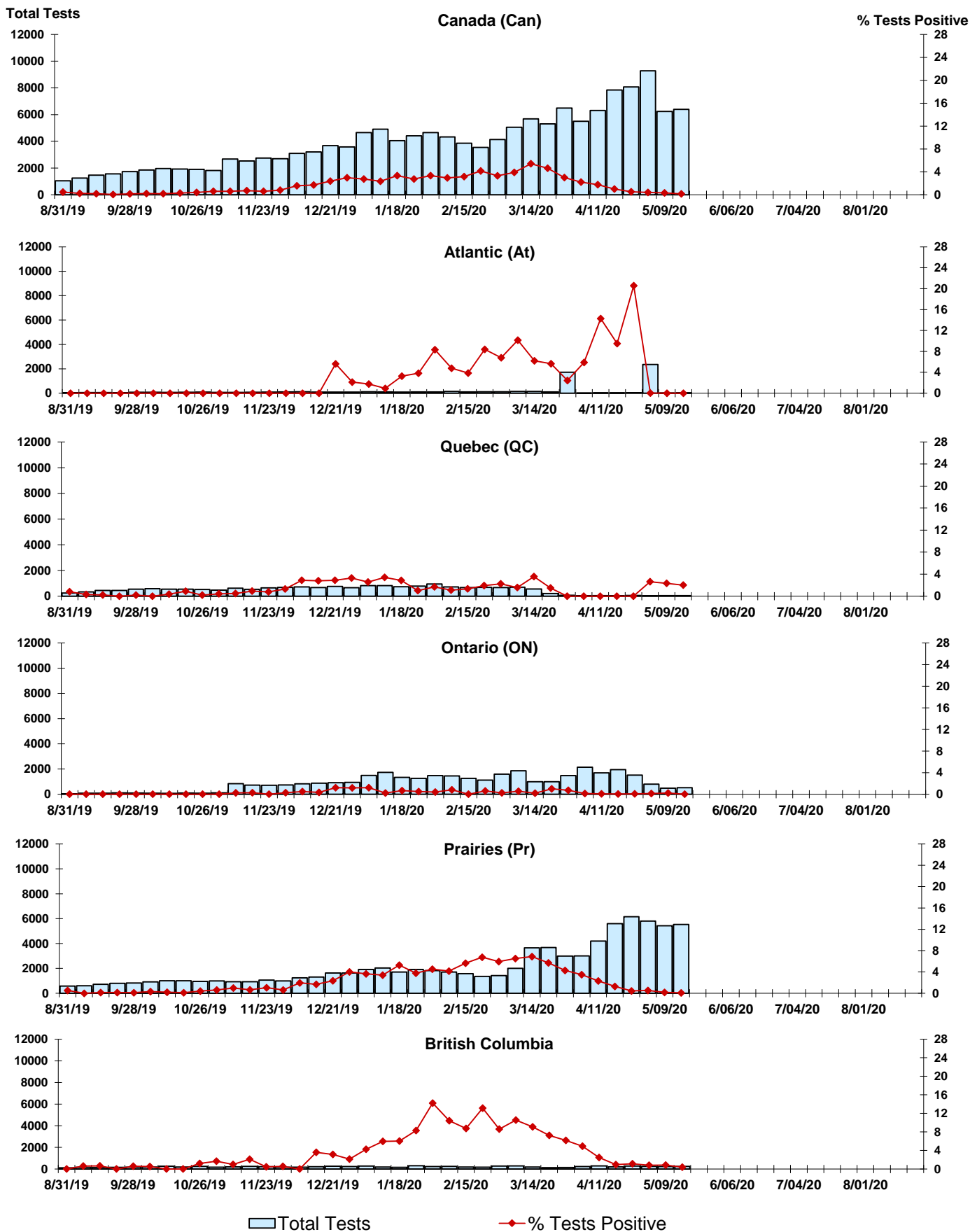


Figure 8: Positive Coronavirus (coron) Tests (%) in Canada by Region by Week of Report



## Abbreviations:

A(H1N1)pdm09: Influenza A(H1N1)pdm09

A(H3): Influenza A(H3N2)

A (UnS): Influenza A (Unsubtyped)

Adeno: Adenovirus

CHEO: Children's Hospital of Eastern Ontario

Coron: Coronavirus

Entero: Enterovirus

hMPV: human metapneumovirus

HSC: Health Sciences Centre

N.A.: Not Applicable

P.H.L.: Public Health Laboratory

P.H.O.L.: Public Health Ontario Laboratory

PIV: Parainfluenza

Rhino: Rhinovirus

RSV: Respiratory syncytial virus

UHN: University Health Network

## Notes:

Specimens from Yukon (YT), Northwest Territories (NT) and Nunavut (NU) are sent to reference laboratories in other provinces. Results reported for the Territories reflect the number of specimens that are identified as originating from YT, NT or NU.

Delays in the reporting of data may cause data to change retrospectively.

Due to reporting delays, the sum of weekly report totals do not add up to cumulative totals.

