

Respiratory Virus Report, Week 24 - ending June 13, 2020

The Respiratory Virus Detection Surveillance System collects data from select laboratories across Canada on the number of tests performed and the number of tests positive for influenza and other respiratory viruses. Data are reported on a weekly basis year-round to the Centre for Immunization and Respiratory Infectious Diseases (CIRID), Public Health Agency of Canada. These data are also summarized in the weekly FluWatch report.

In this Respiratory Virus Report, the number of detections of coronavirus reflects only seasonal human coronaviruses, not the novel pandemic coronavirus (SARS-CoV2) that causes COVID-19. For information on COVID-19, see the [Coronavirus disease \(COVID-19\): Outbreak](#)

Table 1: Respiratory Virus Detections/Isolations for the week ending June 13, 2020 (Reporting Week 202024)

Reporting Laboratory	Flu Tested	A(H1N1)pdm09 Positive	A(H3) Positive	A(UnS) Positive	Total Flu A Positive	Total Flu B Positive	RSV Tested	RSV Positive	PIV Tested	PIV 1 Positive	PIV 2 Positive	PIV 3 Positive	PIV 4 Positive	Other PIV Positive	Adeno Tested	Adeno Positive	hMPV Tested	hMPV Positive	Entero/Rhino Tested	Entero/Rhino Positive	Coron Tested	Coron Positive
Newfoundland	1155	0	0	0	0	0	1155	3	1155	0	0	2	0	0	1155	1	1155	0	1155	9	N.A.	N.A.
Prince Edward Island	0	0	0	0	0	0	0	0	0	0	0	0	0	0	0	0	0	0	0	0	0	0
Nova Scotia	20	0	0	0	0	0	20	0	18	0	0	0	0	0	18	0	18	0	18	0	18	0
New Brunswick	18	0	0	0	0	0	18	0	24	0	0	0	0	0	24	0	24	0	24	1	24	0
Atlantic	1193	0	0	0	0	0	1193	3	1197	0	0	2	0	0	1197	1	1197	0	1197	10	42	0
Région Nord-Est	10	0	0	0	0	0	9	0	0	0	0	0	0	0	0	0	0	0	N.A.	N.A.	0	0
Québec-Chaudière-Appalaches	15	0	0	0	0	0	15	0	12	0	0	0	0	0	12	0	12	0	N.A.	N.A.	12	0
Centre-du-Québec	6	0	0	0	0	0	3	0	4	0	0	0	0	0	4	0	4	0	N.A.	N.A.	4	0
Montréal-Laval	28	0	0	0	0	0	28	0	16	0	0	0	0	0	16	0	15	0	N.A.	N.A.	15	0
Ouest du Québec	4	0	0	0	0	0	4	0	0	0	0	0	0	0	0	0	0	0	N.A.	N.A.	0	0
Montérégie	0	0	0	0	0	0	0	0	0	0	0	0	0	0	0	0	0	0	N.A.	N.A.	0	0
Province of Québec	63	0	0	0	0	0	59	0	32	0	0	0	0	0	32	0	31	0	N.A.	N.A.	31	0
P.H.O.L. - Ottawa	14	0	0	0	0	0	14	0	14	0	0	0	0	0	14	0	14	0	14	0	14	0
CHEO - Ottawa	121	0	0	0	0	1	121	2	22	0	0	0	0	0	22	0	22	0	22	1	22	0
P.H.O.L. - Kingston	16	0	0	0	0	0	16	0	16	0	0	0	0	0	16	0	16	0	16	0	16	0
UHN / Mount Sinai Hospital	5	0	0	0	0	0	5	0	5	0	0	0	0	0	0	0	5	0	0	0	N.A.	N.A.
P.H.O.L. - Toronto	182	0	0	0	0	0	182	0	182	0	0	0	0	0	182	0	182	0	182	0	182	0
Sick Kids Hospital - Toronto	0	0	0	0	0	0	0	0	0	0	0	0	0	0	0	0	0	0	0	0	0	0
Sunnybrook & Women's College HSC	0	0	0	0	0	0	0	0	0	0	0	0	0	0	0	0	0	0	0	0	0	0
P.H.O.L. - Sault Ste. Marie	12	0	0	0	0	0	7	0	7	0	0	0	0	0	7	0	7	0	7	0	7	0
P.H.O.L. - Timmins	1	0	0	0	0	0	1	0	1	0	0	0	0	0	1	0	1	0	1	0	1	0
St. Joseph's - London	23	0	0	0	0	0	23	0	23	0	0	0	0	0	23	0	23	0	23	0	8	0
P.H.O.L. - London	18	0	0	0	0	0	18	0	18	0	0	0	0	0	18	0	18	0	18	0	18	0
P.H.O.L. - Orillia	19	0	0	0	0	0	19	0	19	0	0	0	0	0	19	0	19	0	19	0	19	0
P.H.O.L. - Thunder Bay	41	0	0	0	0	0	41	0	41	0	0	0	0	0	41	0	41	0	41	12	41	0
P.H.O.L. - Sudbury	10	0	0	0	0	0	10	0	10	0	0	0	0	0	10	0	10	0	10	0	10	0
P.H.O.L. - Hamilton	23	0	0	0	0	0	23	0	23	0	0	0	0	0	23	0	23	0	23	0	23	0
P.H.O.L. - Peterborough	13	0	0	0	0	0	13	0	13	0	0	0	0	0	13	0	13	0	13	0	13	0
St. Joseph's - Hamilton	578	0	0	0	0	0	578	0	578	0	0	0	0	0	578	0	578	0	578	2	0	0
Province of Ontario	1076	0	0	0	0	1	1071	2	972	0	0	0	0	0	967	0	972	0	967	15	374	0
Province of Manitoba	383	0	0	0	0	0	438	0	66	0	0	0	0	0	66	2	53	0	66	2	53	0
Regina	0	0	0	0	0	0	0	0	131	0	1	0	0	0	131	1	131	0	131	12	131	0
Saskatoon	0	0	0	0	0	0	0	0	0	0	0	0	0	0	0	0	0	0	0	0	0	0
Province of Saskatchewan	0	0	0	0	0	0	0	0	131	0	1	0	0	0	131	1	131	0	131	12	131	0
Province of Alberta	3610	0	0	0	0	0	3609	0	3609	0	0	0	0	0	3609	8	3609	1	3609	77	3609	1
Prairies	3993	0	0	0	0	0	4047	0	3806	0	1	0	0	0	3806	11	3793	1	3806	91	3793	1
British Columbia	810	0	0	0	0	1	810	0	174	1	1	0	0	0	303	2	303	2	274	10	145	1
Yukon	130	0	0	0	0	0	130	0	N.A.	N.A.	N.A.	N.A.	N.A.	N.A.	N.A.	N.A.	N.A.	N.A.	N.A.	N.A.	N.A.	N.A.
Northwest Territories	8	0	0	0	0	0	8	0	8	0	0	0	0	0	8	0	8	0	8	2	8	1
Nunavut	64	0	0	0	0	0	64	1	64	0	0	0	0	0	64	2	64	0	64	17	2	0
Territories	202	0	0	0	0	0	202	1	72	0	0	0	0	0	72	2	72	0	72	19	10	1
CANADA	7337	0	0	0	0	2	7382	6	6253	1	2	2	0	0	6377	16	6368	3	6316	145	4395	3

Specimens from Yukon (YT), Northwest Territories (NT) and Nunavut (NU) are sent to reference laboratories in other provinces and reported results reflect specimens identified as originating from YT, NT or NU.

Results from British Columbia comprise of specimens from the following sites: BC Children's and Women's Hospital, Children's and Women's Hospital Laboratory, Fraser Health Medical Microbiology Laboratory, Island Health, Providence Health Care, Powell River Hospital, St. Paul's Hospital, Vancouver General Hospital, Victoria General Hospital, Victoria Coastal Health, BCCDC Public Health Laboratory, Interior Health Authority sites and Northern Health Authority sites.

Delays in the reporting of data may cause data to change retrospectively.

For BC, only data from subtyped influenza A specimens are included in the weekly number of influenza detections and so the sum of A(H1N1)pdm09, A(H3), and A(UnS) positive results may not equal the sum of total Flu A positive results.

Table 2: Respiratory Virus Detections/Isolations for the period August 31, 2019 - June 13, 2020 (Reporting Weeks 201935-202024)

Reporting Laboratory	Flu Tested	A(H1N1)pdm09 Positive	A(H3) Positive	A(UnS) Positive	Total Flu A Positive	Total Flu B Positive	RSV Tested	RSV Positive	PIV Tested	PIV 1 Positive	PIV 2 Positive	PIV 3 Positive	PIV 4 Positive	Other PIV Positive	Adeno Tested	Adeno Positive	hMPV Tested	hMPV Positive	Entero/Rhino Tested	Entero/Rhino Positive	Coron Tested	Coron Positive
Newfoundland	14583	8	33	166	207	513	14583	335	14583	147	2	13	0	0	14583	116	14583	189	14583	373	N.A.	N.A.
Prince Edward Island	1267	0	0	144	144	78	1267	146	48	1	0	0	1	0	48	0	46	0	48	16	48	2
Nova Scotia	6638	3	2	196	201	248	6740	625	609	13	1	3	5	0	643	12	643	11	643	77	656	14
New Brunswick	11795	61	29	957	1047	1292	11736	1077	2413	53	7	0	13	0	2413	62	2413	16	2413	288	6394	125
Atlantic	34283	72	64	1463	1599	2131	34326	2183	17653	214	10	16	19	0	17687	190	17685	216	17687	754	7098	141
Région Nord-Est	9253	0	0	1136	1136	1323	7928	644	0	0	0	0	0	0	0	0	0	0	N.A.	N.A.	0	0
Québec-Chaudière-Appalaches	14017	0	0	1900	1900	1829	13914	1318	2728	31	4	3	14	0	2775	80	2172	24	N.A.	N.A.	2114	35
Centre-du-Québec	18998	0	0	2909	2909	2395	15302	1385	49	0	0	1	0	0	49	0	49	0	N.A.	N.A.	49	1
Montréal-Laval	38149	0	0	4022	4022	2411	36995	2398	16903	144	4	35	13	0	16903	516	16439	270	N.A.	N.A.	16749	264
Ouest du Québec	12590	0	0	1745	1745	1278	11742	1089	0	0	0	0	0	0	0	0	0	0	N.A.	N.A.	0	0
Montérégie	8520	0	0	1133	1133	791	8292	610	0	0	0	0	0	0	0	0	0	0	N.A.	N.A.	0	0
Province of Québec	101527	0	0	12845	12845	10027	94173	7444	19680	175	8	39	27	0	19727	596	18660	294	N.A.	N.A.	18912	300
P.H.O.L. - Ottawa	1847	108	61	3	172	71	1838	86	1813	2	0	0	0	0	1813	18	1799	61	1657	78	1642	0
CHEO - Ottawa	9847	1	0	663	664	465	9847	689	998	17	0	5	10	5	998	20	998	20	1001	168	989	29
P.H.O.L. - Kingston	1469	62	27	4	93	23	1447	68	1443	1	0	0	0	0	1443	17	1434	60	1274	64	1261	0
UHN / Mount Sinai Hospital	12028	9	0	651	660	218	12028	348	623	7	2	10	2	0	0	0	717	16	0	0	N.A.	N.A.
P.H.O.L. - Toronto	18053	1349	144	36	1529	355	17589	416	17510	34	0	3	0	0	17510	154	17290	440	14966	802	14726	0
Sick Kids Hospital - Toronto	2407	104	13	99	216	168	1936	208	1936	26	5	8	27	0	1936	53	1936	48	1936	366	1936	92
Sunnybrook & Women's College HSC	3456	0	0	124	124	25	3456	64	3456	9	0	17	0	0	3197	11	3316	35	3316	66	120	0
P.H.O.L. - Sault Ste. Marie	593	20	0	0	20	8	567	28	568	1	0	0	0	0	568	5	565	33	517	14	514	0
P.H.O.L. - Timmins	691	65	3	2	70	12	659	32	662	0	0	0	0	0	662	1	659	30	634	5	629	0
St. Joseph's - London	4672	0	0	238	238	114	4672	334	1638	19	4	3	14	0	1638	24	1638	33	861	112	788	22
P.H.O.L. - London	5326	309	112	9	430	145	5291	250	5277	8	0	0	0	0	5279	49	5238	180	4821	296	4770	0
P.H.O.L. - Orillia	1676	81	31	3	115	33	1673	89	1670	4	0	0	0	0	1670	8	1665	50	1479	81	1472	0
P.H.O.L. - Thunder Bay	1340	82	17	9	108	45	1338	64	1338	0	0	1	0	0	1338	17	1327	52	1290	80	1278	0
P.H.O.L. - Sudbury	915	29	14	4	47	15	909	45	910	0	0	1	0	0	910	9	900	14	838	28	827	0
P.H.O.L. - Hamilton	5086	286	39	12	337	117	4938	164	4919	10	1	0	0	0	4919	69	4898	139	4324	339	4299	0
P.H.O.L. - Peterborough	1234	66	4	1	71	10	1225	33	1224	3	0	0	0	0	1223	10	1219	47	969	77	962	0
St. Joseph's - Hamilton	30888	0	0	1617	1617	806	30888	1275	30888	119	6	26	0	0	30888	272	30888	461	30888	1286	0	0
Province of Ontario	101528	2571	465	3475	6511	2630	100301	4193	76873	260	18	74	53	5	75992	737	76487	1719	70771	3862	36213	143
Manitoba	22133	174	134	1340	1648	889	21795	1007	4121	48	9	4	8	0	4121	61	2995	59	4121	495	2628	78
Regina	13488	43	26	1193	1262	665	13497	1043	5838	148	16	6	30	0	5838	96	5761	205	5838	838	5838	150
Saskatoon	4455	0	0	318	318	235	4455	182	4519	98	12	6	7	0	4519	66	4522	27	4519	530	4519	45
Province of Saskatchewan	17943	43	26	1511	1580	900	17952	1225	10357	246	28	12	37	0	10357	162	10283	232	10357	1368	10357	195
Province of Alberta	93179	1741	1287	1346	4374	3416	85727	0	85727	494	99	99	267	0	85727	877	85727	1629	85727	5869	85727	1728
Prairies	133255	1958	1447	4197	7602	5205	125474	2232	100205	788	136	115	312	0	100205	1100	99005	1920	100205	7732	98712	2001
British Columbia	86148	277	244	1851	4090	2575	85787	2771	25757	185	60	38	52	86	25883	168	25807	690	25063	1794	8493	315
Yukon	7711	4	8	55	73	45	7711	23	N.A.	N.A.	N.A.	N.A.	N.A.	N.A.	N.A.	N.A.	N.A.	N.A.	N.A.	N.A.	N.A.	N.A.
Northwest Territories	1544	90	19	1	110	191	1533	0	1533	14	2	13	13	0	1533	21	1533	87	1533	190	1533	76
Nunavut	1181	5	14	42	61	73	1178	51	1178	35	3	1	6	0	1178	25	1178	30	1178	176	246	34
Territories	10436	99	41	98	244	309	10422	74	2711	49	5	14	19	0	2711	46	2711	117	2711	366	1779	110
CANADA	467177	4977	2261	23929	32891	22877	450483	18897	242879	1671	237	296	482	91	242205	2837	240355	4956	216437	14508	171207	3010

Specimens from YT, NT and NU are sent to reference laboratories in other provinces and reported results reflect specimens identified as originating from YT, NT or NU.

Results from British Columbia comprise of specimens from the following sites: BC Children's and Women's Hospital, Children's and Women's Hospital Laboratory, Fraser Health Medical Microbiology Laboratory, Island Health, Providence Health Care, Powell River Hospital, St. Paul's Hospital, Vancouver General Hospital, Victoria General Hospital, Victoria Coastal Health, BCCDC P

Delays in the reporting of data may cause data to change retrospectively. Due to reporting delays, the sum of weekly report totals do not add up to cumulative totals.

For BC, only data from subtyped influenza A specimens are included in the weekly number of influenza detections and so the sum of A(H1N1)pdm09, A(H3), and A(UnS) positive results may not equal the sum of total Flu A positive results.

Figure 1: Number positive laboratory tests for other respiratory viruses by report week, Canada, 2019-20

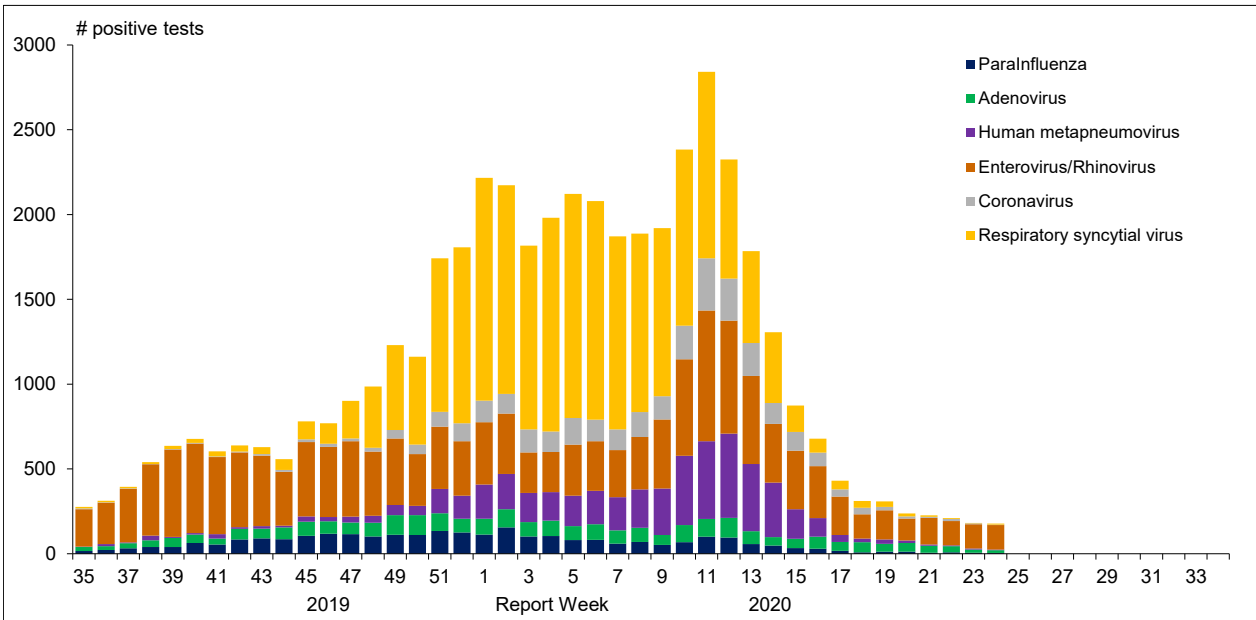


Figure 2 : Positive Influenza Tests (%) in Canada by Region by Week of Report

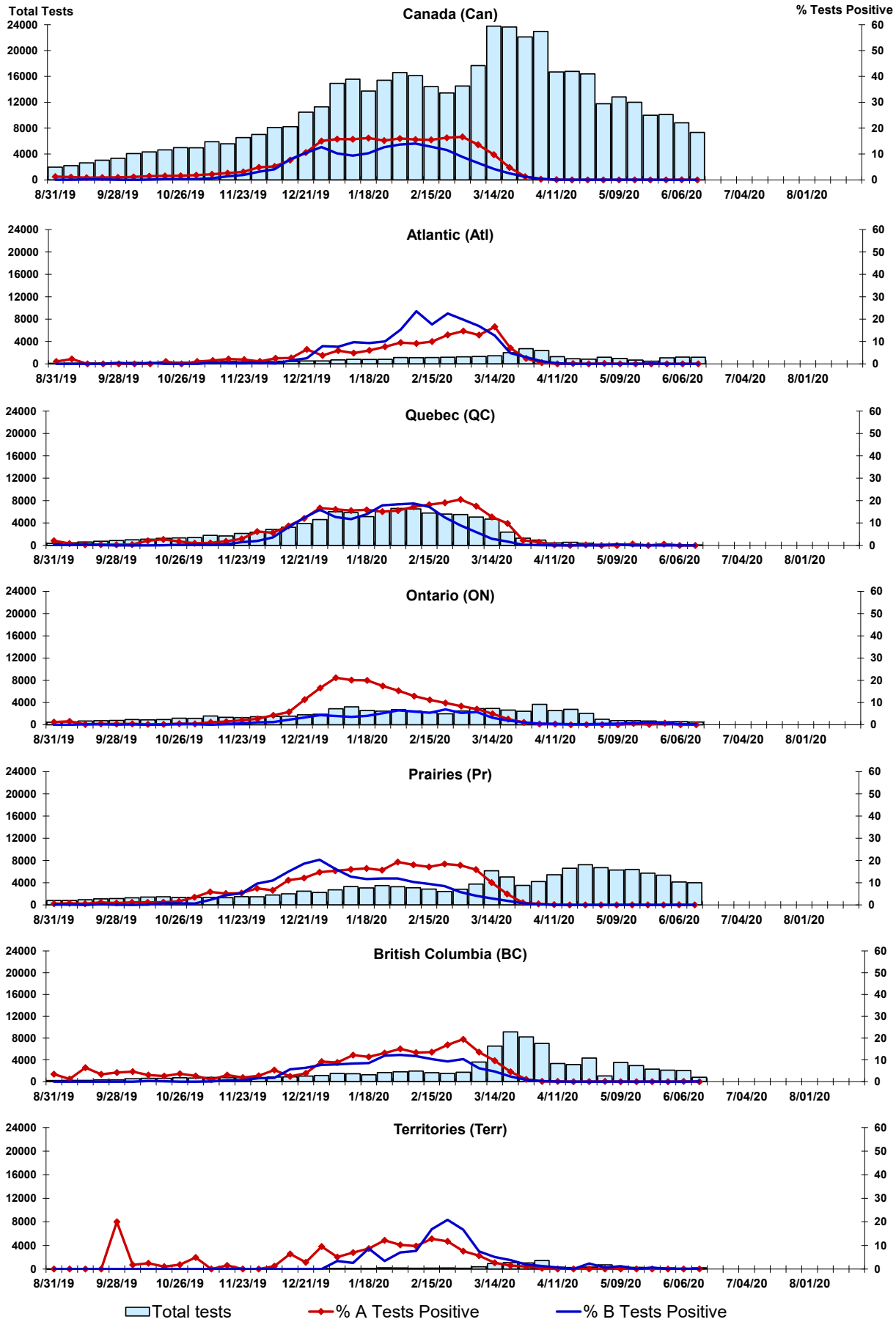


Figure 3: Positive Respiratory syncytial virus (RSV) Tests (%) in Canada by Region by Week of Report

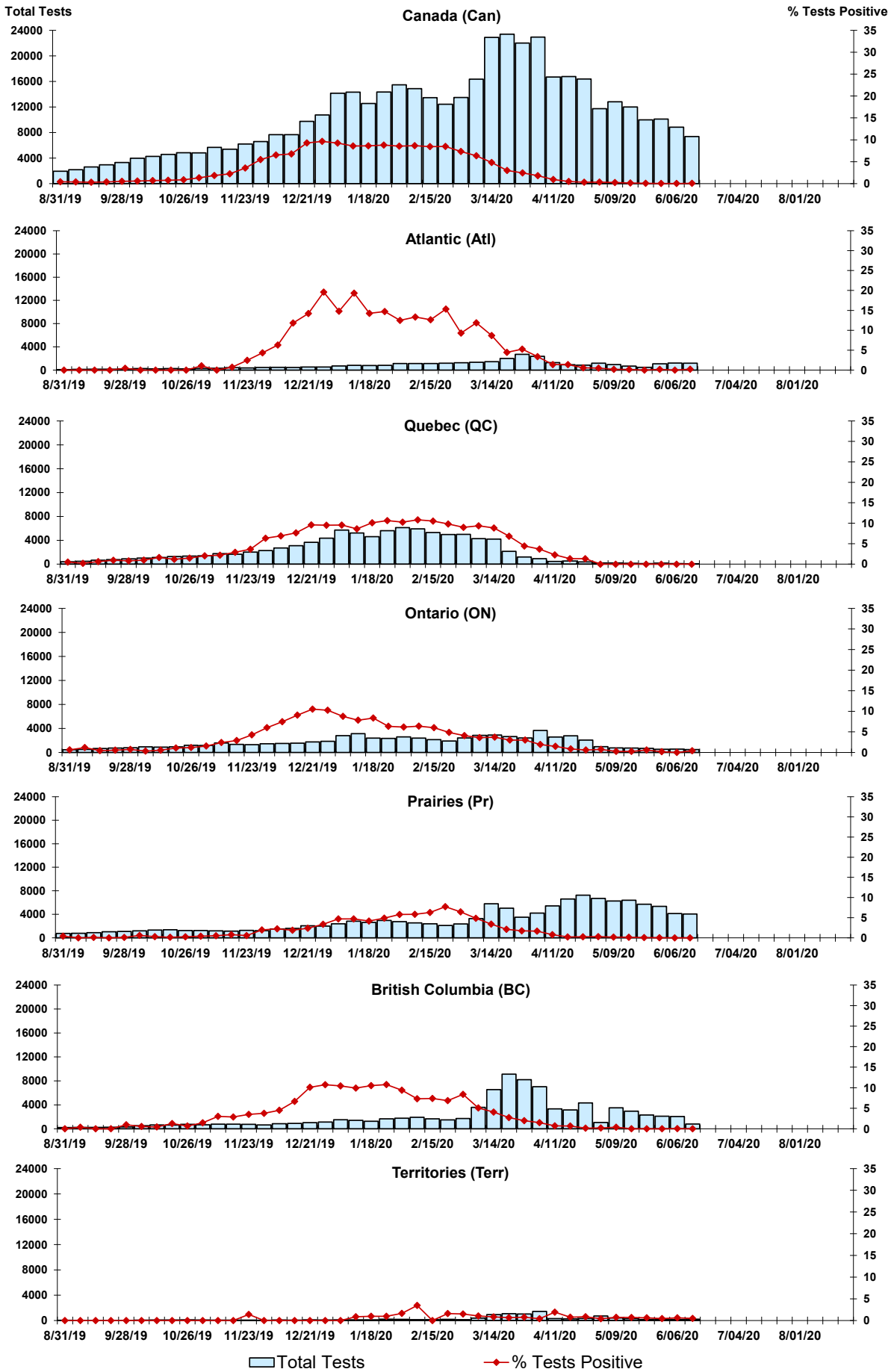


Figure 4: Positive Parainfluenza (PIV) Tests (%) in Canada by Region by Week of Report

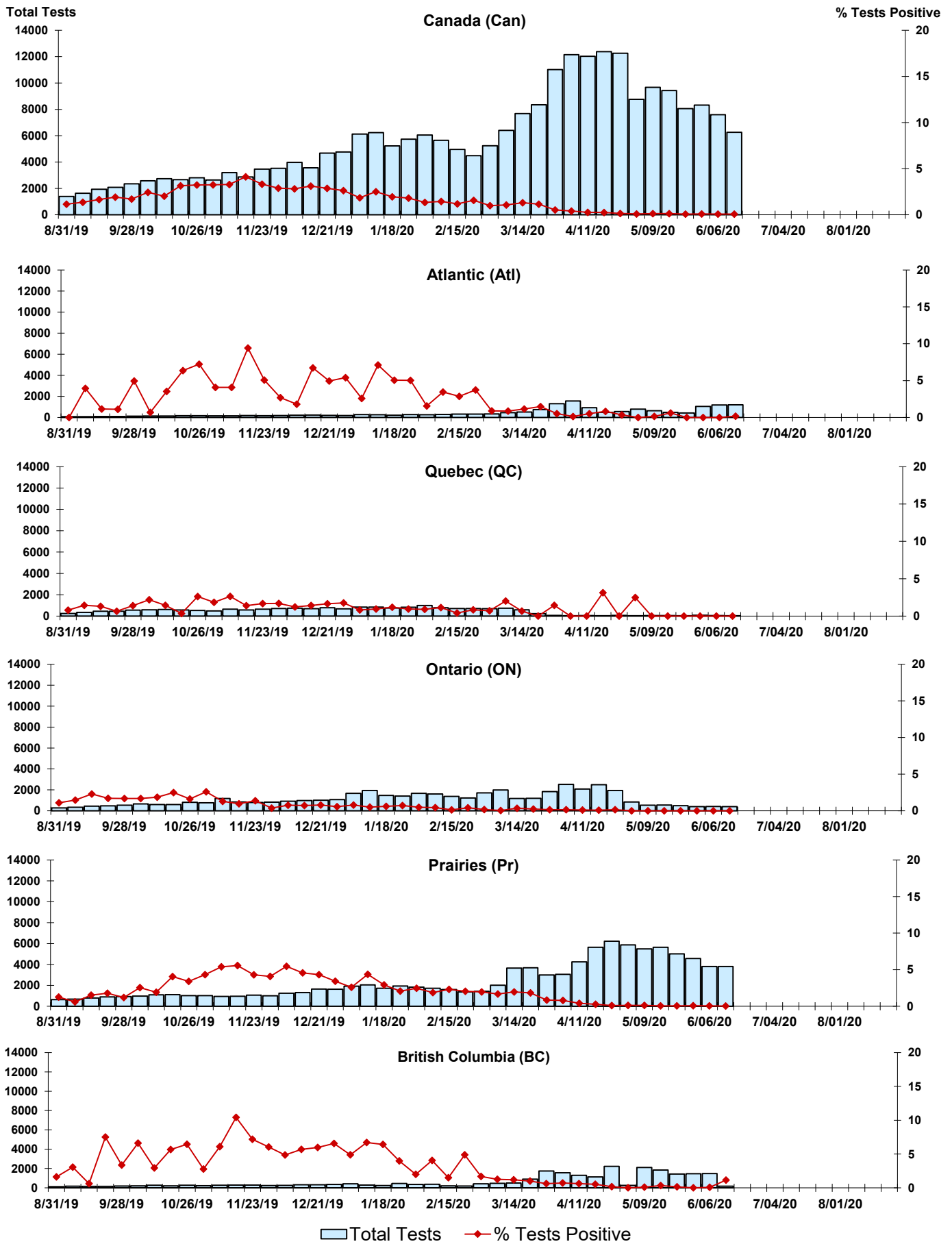


Figure 5: Positive Adenovirus (adeno) Tests (%) in Canada by Region by Week of Report

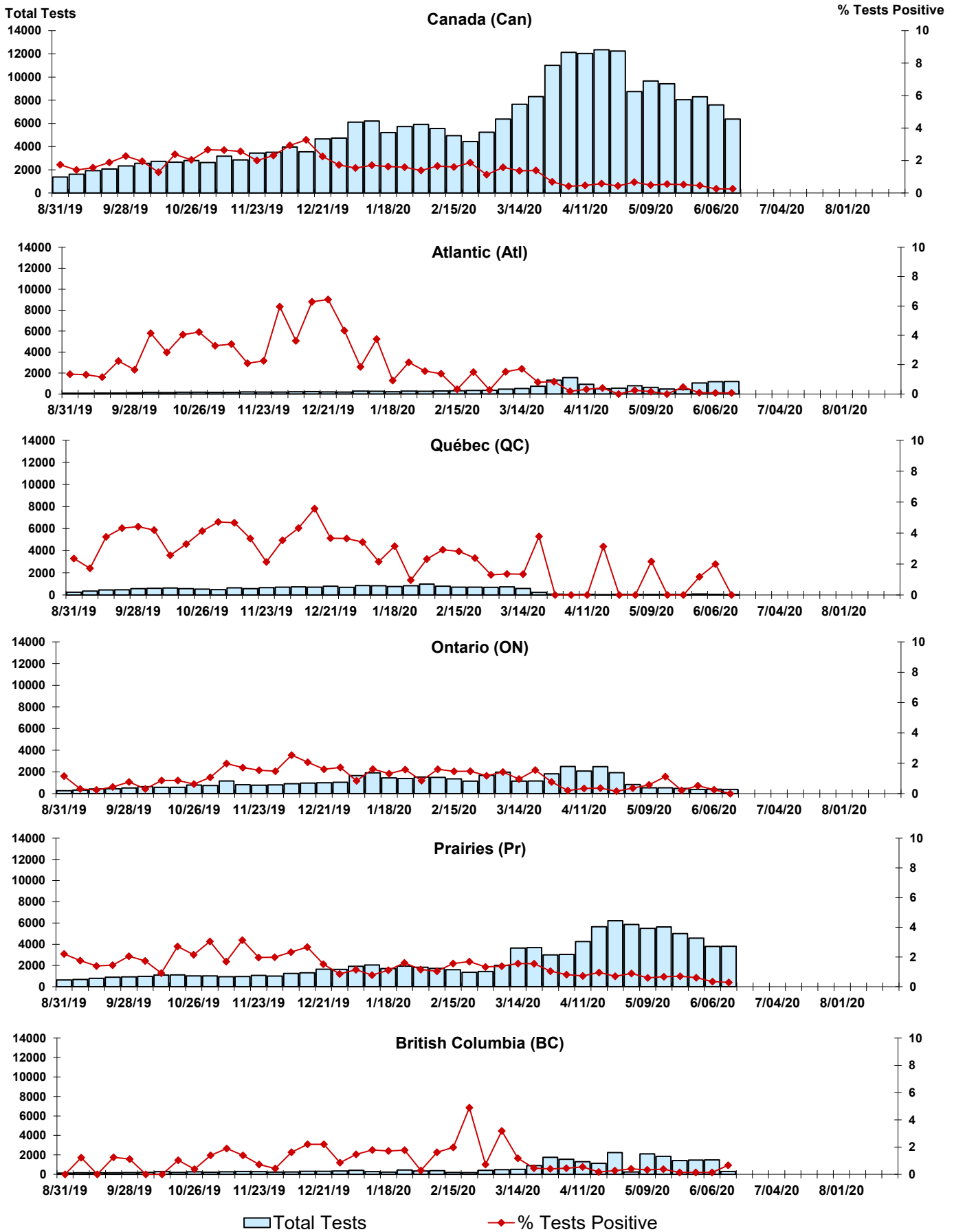


Figure 6: Positive human metapneumovirus (hMPV) Tests (%) in Canada by Region by Week of Report

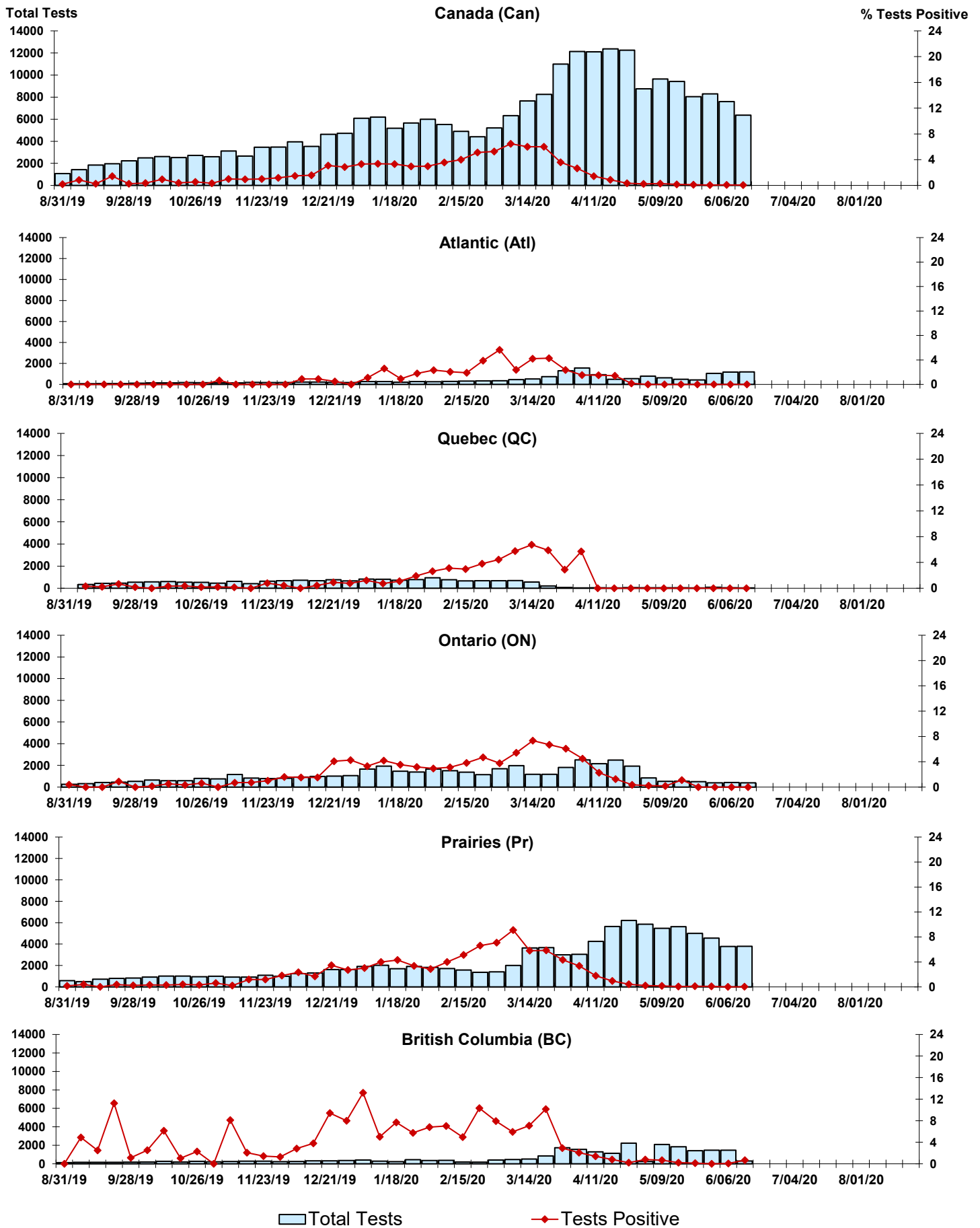


Figure 7: Positive Enterovirus/Rhinovirus (entero/rhino) Tests (%) in Canada by Region by Week of Report

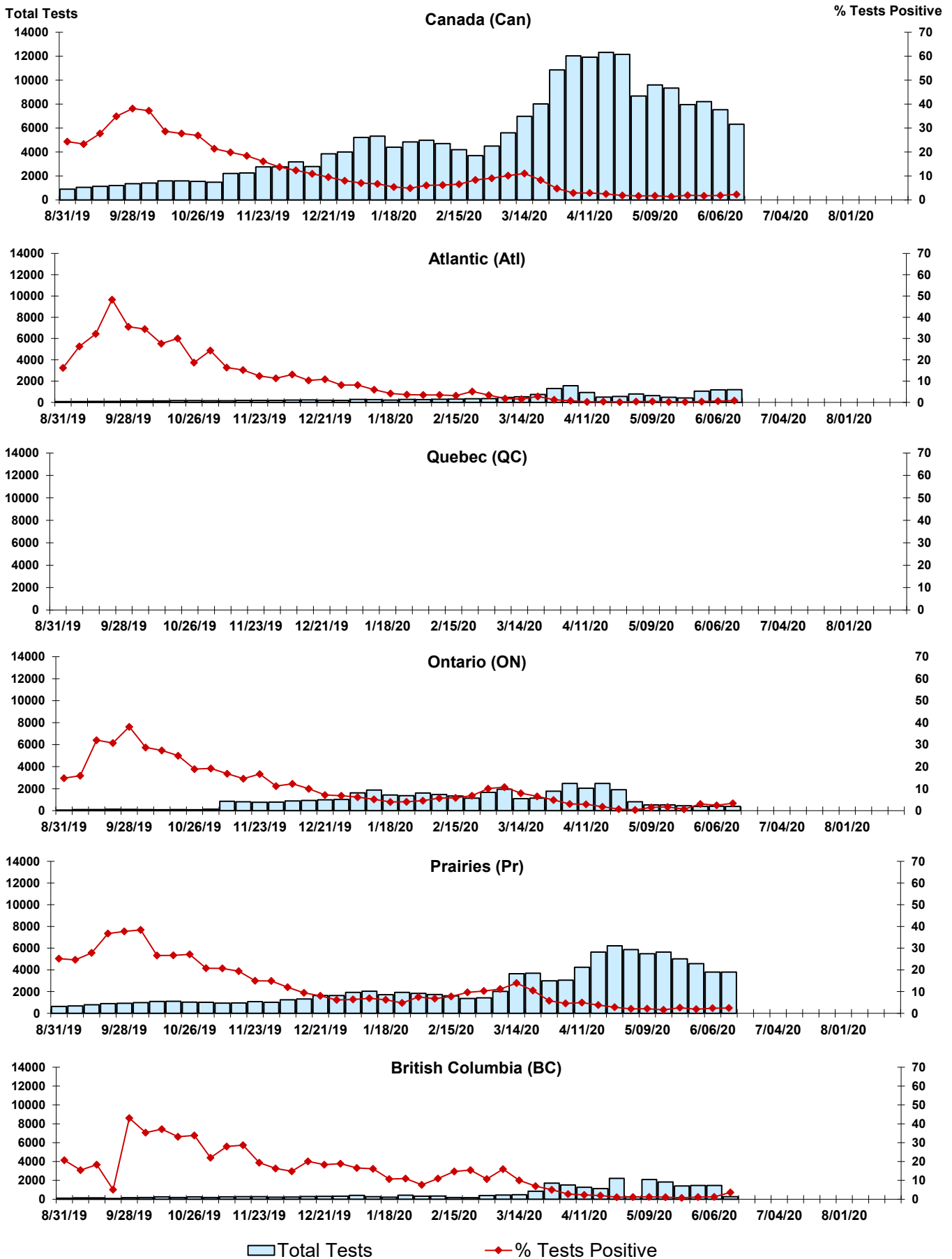
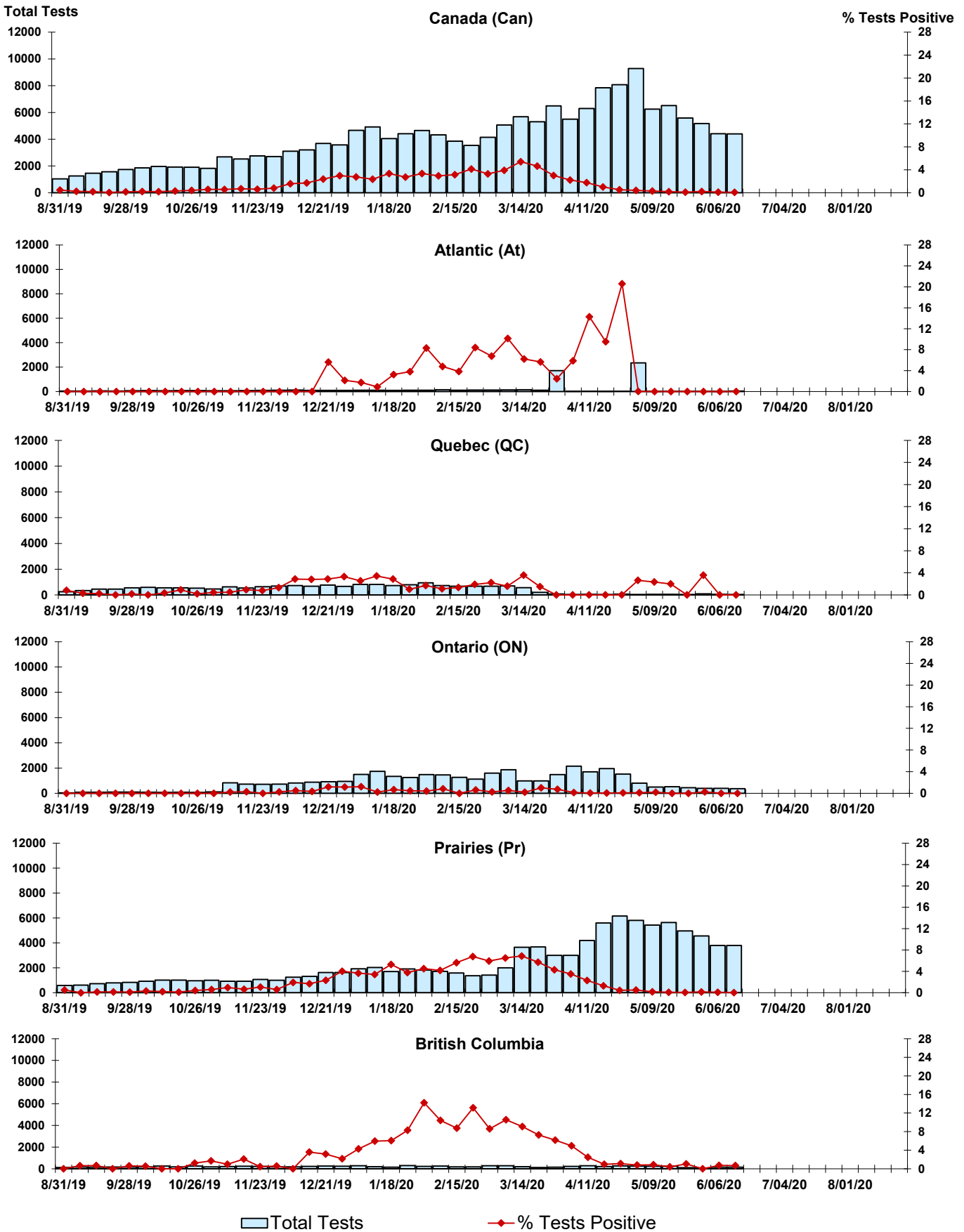


Figure 8: Positive Coronavirus (coron) Tests (%) in Canada by Region by Week of Report



Abbreviations:

A(H1N1)pdm09: Influenza A(H1N1)pdm09

A(H3): Influenza A(H3N2)

A (UnS): Influenza A (Unsubtyped)

Adeno: Adenovirus

CHEO: Children's Hospital of Eastern Ontario

Coron: Coronavirus

Entero: Enterovirus

hMPV: human metapneumovirus

HSC: Health Sciences Centre

N.A.: Not Applicable

P.H.L.: Public Health Laboratory

P.H.O.L.: Public Health Ontario Laboratory

PIV: Parainfluenza

Rhino: Rhinovirus

RSV: Respiratory syncytial virus

UHN: University Health Network

Notes:

Specimens from Yukon (YT), Northwest Territories (NT) and Nunavut (NU) are sent to reference laboratories in other provinces. Results reported for the Territories reflect the number of specimens that are identified as originating from YT, NT or NU.

Delays in the reporting of data may cause data to change retrospectively.

Due to reporting delays, the sum of weekly report totals do not add up to cumulative totals.

