

Respiratory Virus Report, Week 25 - ending June 20, 2020

The Respiratory Virus Detection Surveillance System collects data from select laboratories across Canada on the number of tests performed and the number of tests positive for influenza and other respiratory viruses. Data are reported on a weekly basis year-round to the Centre for Immunization and Respiratory Infectious Diseases (CIRID), Public Health Agency of Canada. These data are also summarized in the weekly FluWatch report.

In this Respiratory Virus Report, the number of detections of coronavirus reflects only seasonal human coronaviruses, not the novel pandemic coronavirus (SARS-CoV2) that causes COVID-19. For information on COVID-19, see the [Coronavirus disease \(COVID-19\): Outbreak](#)

Table 1: Respiratory Virus Detections/Isolations for the week ending June 20, 2020 (Reporting Week 202025)

Reporting Laboratory	Flu Tested	A(H1N1)pdm09 Positive	A(H3) Positive	A(UnS) Positive	Total Flu A Positive	Total Flu B Positive	RSV Tested	RSV Positive	PIV Tested	PIV 1 Positive	PIV 2 Positive	PIV 3 Positive	PIV 4 Positive	Other PIV Positive	Adeno Tested	Adeno Positive	hMPV Tested	hMPV Positive	Entero/Rhino Tested	Entero/Rhino Positive	Coron Tested	Coron Positive
Newfoundland	0	0	0	0	0	0	0	0	0	0	0	0	0	0	0	0	0	0	0	0	N.A.	N.A.
Prince Edward Island	1	0	0	0	0	0	1	0	0	0	0	0	0	0	0	0	0	0	0	0	0	0
Nova Scotia	7	0	0	0	0	0	7	0	7	0	0	0	0	0	7	0	7	0	7	0	7	0
New Brunswick	18	0	0	0	0	0	18	0	5	0	0	0	0	0	5	0	5	0	5	2	5	0
Atlantic	26	0	0	0	0	0	26	0	12	0	0	0	0	0	12	0	12	0	12	2	12	0
Région Nord-Est	7	0	0	0	0	0	6	0	0	0	0	0	0	0	0	0	0	0	N.A.	N.A.	0	0
Québec-Chaudière-Appalaches	10	0	0	0	0	0	10	0	9	0	0	0	0	0	9	0	9	0	N.A.	N.A.	9	0
Centre-du-Québec	1	0	0	0	0	0	1	0	0	0	0	0	0	0	0	0	0	0	N.A.	N.A.	0	0
Montréal-Laval	23	0	0	0	0	0	22	0	18	0	0	0	0	0	18	0	18	0	N.A.	N.A.	18	0
Ouest du Québec	5	0	0	0	0	0	5	0	0	0	0	0	0	0	0	0	0	0	N.A.	N.A.	0	0
Montérégie	0	0	0	0	0	0	0	0	0	0	0	0	0	0	0	0	0	0	N.A.	N.A.	0	0
Province of Québec	46	0	0	0	0	0	44	0	27	0	0	0	0	0	27	0	27	0	N.A.	N.A.	27	0
P.H.O.L. - Ottawa	16	0	0	0	0	0	16	0	16	0	0	0	0	0	16	0	16	0	16	0	16	0
CHEO - Ottawa	118	0	0	0	0	0	118	2	18	0	0	0	0	0	18	0	18	0	18	0	18	0
P.H.O.L. - Kingston	8	0	0	0	0	0	8	0	8	0	0	0	0	0	8	0	8	0	8	0	8	0
UHN / Mount Sinai Hospital	6	0	0	0	0	0	6	0	6	0	0	0	0	0	0	0	6	0	0	0	N.A.	N.A.
P.H.O.L. - Toronto	152	0	0	0	0	0	152	0	152	0	0	0	0	0	152	1	152	0	152	1	152	0
Sick Kids Hospital - Toronto	0	0	0	0	0	0	0	0	0	0	0	0	0	0	0	0	0	0	0	0	0	0
Sunnybrook & Women's College HSC	0	0	0	0	0	0	0	0	0	0	0	0	0	0	0	0	0	0	0	0	0	0
P.H.O.L. - Sault Ste. Marie	5	0	0	0	0	0	5	0	5	0	0	0	0	0	5	0	5	0	5	0	5	0
P.H.O.L. - Timmins	1	0	0	0	0	0	1	0	1	0	0	0	0	0	1	0	1	0	1	0	1	0
St. Joseph's - London	7	0	0	0	0	0	7	0	7	0	0	0	0	0	7	0	7	0	7	0	7	0
P.H.O.L. - London	26	0	0	0	0	0	26	0	26	0	0	0	0	0	26	0	26	0	26	0	26	0
P.H.O.L. - Orillia	5	0	0	0	0	0	5	0	5	0	0	0	0	0	5	0	5	0	5	0	5	0
P.H.O.L. - Thunder Bay	45	0	0	0	0	0	45	0	45	0	0	0	0	0	45	2	45	0	45	10	45	0
P.H.O.L. - Sudbury	2	0	0	0	0	0	2	0	2	0	0	0	0	0	2	0	2	0	2	0	2	0
P.H.O.L. - Hamilton	19	0	0	0	0	0	18	0	18	0	0	0	0	0	18	0	18	0	18	0	18	0
P.H.O.L. - Peterborough	4	0	0	0	0	0	4	0	4	0	0	0	0	0	4	0	4	0	4	0	4	0
St. Joseph's - Hamilton	435	0	0	0	0	0	435	0	435	0	0	0	0	0	435	1	435	0	435	2	0	0
Province of Ontario	849	0	0	0	0	0	848	2	748	0	0	0	0	0	742	4	748	0	742	13	307	0
Province of Manitoba	398	0	0	0	0	0	398	0	85	0	0	0	0	0	85	0	73	0	85	0	0	0
Regina	76	0	0	0	0	0	76	0	91	1	0	0	0	0	91	2	91	0	91	8	91	0
Saskatoon	0	0	0	0	0	0	0	0	0	0	0	0	0	0	0	0	0	0	0	0	0	0
Province of Saskatchewan	76	0	0	0	0	0	76	0	91	1	0	0	0	0	91	2	91	0	91	8	91	0
Province of Alberta	2779	0	0	0	0	1	2779	0	2779	0	1	0	0	0	2779	6	2779	0	2779	57	2779	1
Prairies	3253	0	0	0	0	1	3253	0	2955	1	1	0	0	0	2955	8	2943	0	2955	65	2870	1
British Columbia	675	0	0	1	1	0	678	0	300	0	0	0	0	0	300	0	300	0	272	2	209	1
Yukon	115	0	0	0	0	0	115	0	N.A.	N.A.	N.A.	N.A.	N.A.	N.A.	N.A.	N.A.	N.A.	N.A.	N.A.	N.A.	N.A.	N.A.
Northwest Territories	10	0	0	0	0	0	10	0	10	0	0	0	0	0	10	0	10	0	10	1	10	0
Nunavut	58	0	0	0	0	0	58	1	58	0	0	0	0	0	58	0	58	3	58	10	5	0
Territories	183	0	0	0	0	0	183	1	68	0	0	0	0	0	68	0	68	3	68	11	15	0
CANADA	5032	0	0	1	1	1	5032	3	4110	1	1	0	0	0	4104	12	4098	3	4049	93	3440	2

Specimens from Yukon (YT), Northwest Territories (NT) and Nunavut (NU) are sent to reference laboratories in other provinces and reported results reflect specimens identified as originating from YT, NT or NU.

Results from British Columbia comprise of specimens from the following sites: BC Children's and Women's Hospital, Children's and Women's Hospital Laboratory, Fraser Health Medical Microbiology Laboratory, Island Health, Providence Health Care, Powell River Hospital, St. Paul's Hospital, Vancouver General Hospital, Victoria General Hospital, Victoria Coastal Health, BCCDC Public Health Laboratory, Interior Health Authority sites and Northern Health Authority sites.

Delays in the reporting of data may cause data to change retrospectively.

For BC, only data from subtyped influenza A specimens are included in the weekly number of influenza detections and so the sum of A(H1N1)pdm09, A(H3), and A(UnS) positive results may not equal the sum of total Flu A positive results.

Table 2: Respiratory Virus Detections/Isolations for the period August 31, 2019 - June 20, 2020 (Reporting Weeks 201935-202025)

Reporting Laboratory	Flu Tested	A(H1N1)pdm09 Positive	A(H3) Positive	A(UnS) Positive	Total Flu A Positive	Total Flu B Positive	RSV Tested	RSV Positive	PIV Tested	PIV 1 Positive	PIV 2 Positive	PIV 3 Positive	PIV 4 Positive	Other PIV Positive	Adeno Tested	Adeno Positive	hMPV Tested	hMPV Positive	Entero/Rhino Tested	Entero/Rhino Positive	Coron Tested	Coron Positive
Newfoundland	14583	8	33	166	207	513	14583	335	14583	147	2	13	0	0	14583	116	14583	189	14583	373	N.A.	N.A.
Prince Edward Island	1268	0	0	144	144	78	1268	146	48	1	0	0	1	0	48	0	46	0	48	16	48	2
Nova Scotia	6645	3	2	196	201	248	6747	625	616	13	1	3	5	0	650	12	650	11	650	77	663	14
New Brunswick	11813	61	29	957	1047	1292	11754	1077	2418	53	7	0	13	0	2418	62	2418	16	2418	290	6399	125
Atlantic	34309	72	64	1463	1599	2131	34352	2183	17665	214	10	16	19	0	17699	190	17697	216	17699	756	7110	141
Région Nord-Est	9260	0	0	1136	1136	1323	7934	644	0	0	0	0	0	0	0	0	0	0	N.A.	N.A.	0	0
Québec-Chaudière-Appalaches	14027	0	0	1900	1900	1829	13924	1318	2737	31	4	3	14	0	2784	80	2181	24	N.A.	N.A.	2123	35
Centre-du-Québec	18999	0	0	2909	2909	2395	15303	1385	49	0	0	1	0	0	49	0	49	0	N.A.	N.A.	49	1
Montréal-Laval	38172	0	0	4022	4022	2411	37017	2398	16921	144	4	35	13	0	16921	516	16457	270	N.A.	N.A.	16767	264
Ouest du Québec	12595	0	0	1745	1745	1278	11747	1089	0	0	0	0	0	0	0	0	0	0	N.A.	N.A.	0	0
Montérégie	8520	0	0	1133	1133	791	8292	610	0	0	0	0	0	0	0	0	0	0	N.A.	N.A.	0	0
Province of Québec	101573	0	0	12845	12845	10027	94217	7444	19707	175	8	39	27	0	19754	596	18687	294	N.A.	N.A.	18939	300
P.H.O.L. - Ottawa	1863	108	61	3	172	71	1854	86	1829	2	0	0	0	0	1829	18	1815	61	1673	78	1658	0
CHEO - Ottawa	9965	1	0	663	664	465	9965	691	1016	17	0	5	10	5	1016	20	1016	20	1019	168	1007	29
P.H.O.L. - Kingston	1477	62	27	4	93	23	1455	68	1451	1	0	0	0	0	1451	17	1442	60	1282	64	1269	0
UHN / Mount Sinai Hospital	12034	9	0	651	660	218	12034	348	629	7	2	10	2	0	0	0	723	16	0	0	N.A.	N.A.
P.H.O.L. - Toronto	18204	1349	144	36	1529	355	17740	416	17661	34	0	3	0	0	17661	155	17441	440	15117	803	14877	0
Sick Kids Hospital - Toronto	2407	104	13	99	216	168	1936	208	1936	26	5	8	27	0	1936	53	1936	48	1936	366	1936	92
Sunnybrook & Women's College HSC	3456	0	0	124	124	25	3456	64	3456	9	0	17	0	0	3197	11	3316	35	3316	66	120	0
P.H.O.L. - Sault Ste. Marie	598	20	0	0	20	8	574	28	575	1	0	0	0	0	575	5	572	33	524	14	521	0
P.H.O.L. - Timmins	692	65	3	2	70	12	660	32	663	0	0	0	0	0	663	1	660	30	635	5	630	0
St. Joseph's - London	4679	0	0	238	238	114	4679	334	1645	19	4	3	14	0	1645	24	1645	33	868	112	795	22
P.H.O.L. - London	5352	309	112	9	430	145	5317	250	5303	8	0	0	0	0	5305	49	5264	180	4847	296	4796	0
P.H.O.L. - Orillia	1681	81	31	3	115	33	1678	89	1675	4	0	0	0	0	1675	8	1670	50	1484	81	1477	0
P.H.O.L. - Thunder Bay	1385	82	17	9	108	45	1383	64	1383	0	0	1	0	0	1383	19	1372	52	1335	90	1323	0
P.H.O.L. - Sudbury	917	29	14	4	47	15	911	45	912	0	0	1	0	0	912	9	902	14	840	28	829	0
P.H.O.L. - Hamilton	5104	286	39	12	337	117	4955	164	4936	10	1	0	0	0	4936	69	4915	139	4341	339	4316	0
P.H.O.L. - Peterborough	1238	66	4	1	71	10	1229	33	1228	3	0	0	0	0	1227	10	1223	47	973	77	966	0
St. Joseph's - Hamilton	31323	0	0	1617	1617	806	31323	1275	31323	119	6	26	0	0	31323	273	31323	461	31323	1288	0	0
Province of Ontario	102375	2571	465	3475	6511	2630	101149	4195	77621	260	18	74	53	5	76734	741	77235	1719	71513	3875	36520	143
Manitoba	22531	174	134	1340	1648	889	22193	1007	4206	48	9	4	8	0	4206	61	3068	59	4206	495	2509	78
Regina	13717	43	26	1194	1263	665	13726	1043	5929	149	16	6	30	0	5929	98	5852	205	5929	846	5929	150
Saskatoon	4455	0	0	318	318	235	4455	182	4519	98	12	6	7	0	4519	66	4522	27	4519	530	4519	45
Province of Saskatchewan	18172	43	26	1512	1581	900	18181	1225	10448	247	28	12	37	0	10448	164	10374	232	10448	1376	10448	195
Province of Alberta	96675	1741	1287	1346	4374	3417	89223	0	89223	494	100	99	267	0	89223	887	89223	1630	89223	5940	89223	1731
Prairies	137378	1958	1447	4198	7603	5206	129597	2232	103877	789	137	115	312	0	103877	1112	102665	1921	103877	7811	102180	2004
British Columbia	86823	277	244	1852	4091	2575	86465	2771	26057	185	60	38	52	86	26183	168	26107	690	25335	1796	8702	316
Yukon	7826	4	8	55	73	45	7826	23	N.A.	N.A.	N.A.	N.A.	N.A.	N.A.	N.A.	N.A.	N.A.	N.A.	N.A.	N.A.	N.A.	N.A.
Northwest Territories	1556	90	19	1	110	191	1545	0	1545	14	2	13	13	0	1545	21	1545	88	1545	191	1545	76
Nunavut	1251	5	14	42	61	73	1248	52	1248	35	4	1	6	0	1248	25	1248	37	1248	187	263	35
Territories	10633	99	41	98	244	309	10619	75	2793	49	6	14	19	0	2793	46	2793	125	2793	378	1808	111
CANADA	473091	4977	2261	23931	32893	22878	456399	18900	247720	1672	239	296	482	91	247040	2853	245184	4965	221217	14616	175259	3015

Specimens from YT, NT and NU are sent to reference laboratories in other provinces and reported results reflect specimens identified as originating from YT, NT or NU.

Results from British Columbia comprise of specimens from the following sites: BC Children's and Women's Hospital, Children's and Women's Hospital Laboratory, Fraser Health Medical Microbiology Laboratory, Island Health, Providence Health Care, Powell River Hospital, St. Paul's Hospital, Vancouver General Hospital, Victoria General Hospital, Victoria Coastal Health, BCCDC P

Delays in the reporting of data may cause data to change retrospectively. Due to reporting delays, the sum of weekly report totals do not add up to cumulative totals.

For BC, only data from subtyped influenza A specimens are included in the weekly number of influenza detections and so the sum of A(H1N1)pdm09, A(H3), and A(UnS) positive results may not equal the sum of total Flu A positive results.

Figure 1: Number positive laboratory tests for other respiratory viruses by report week, Canada, 2019-20

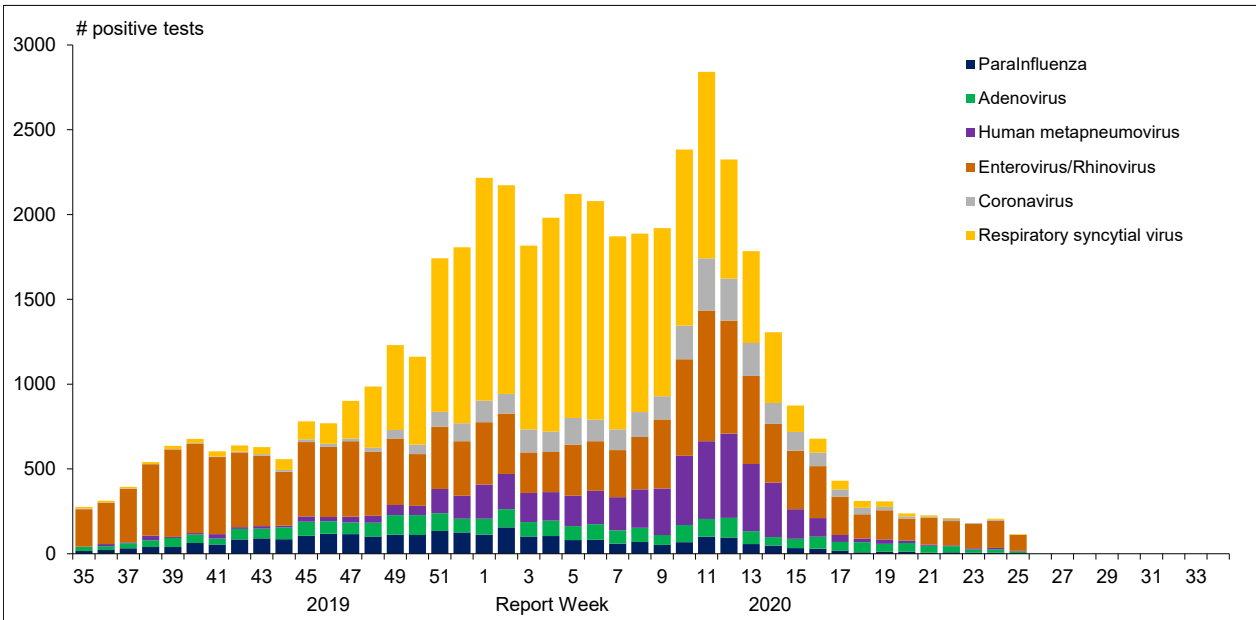


Figure 2 : Positive Influenza Tests (%) in Canada by Region by Week of Report

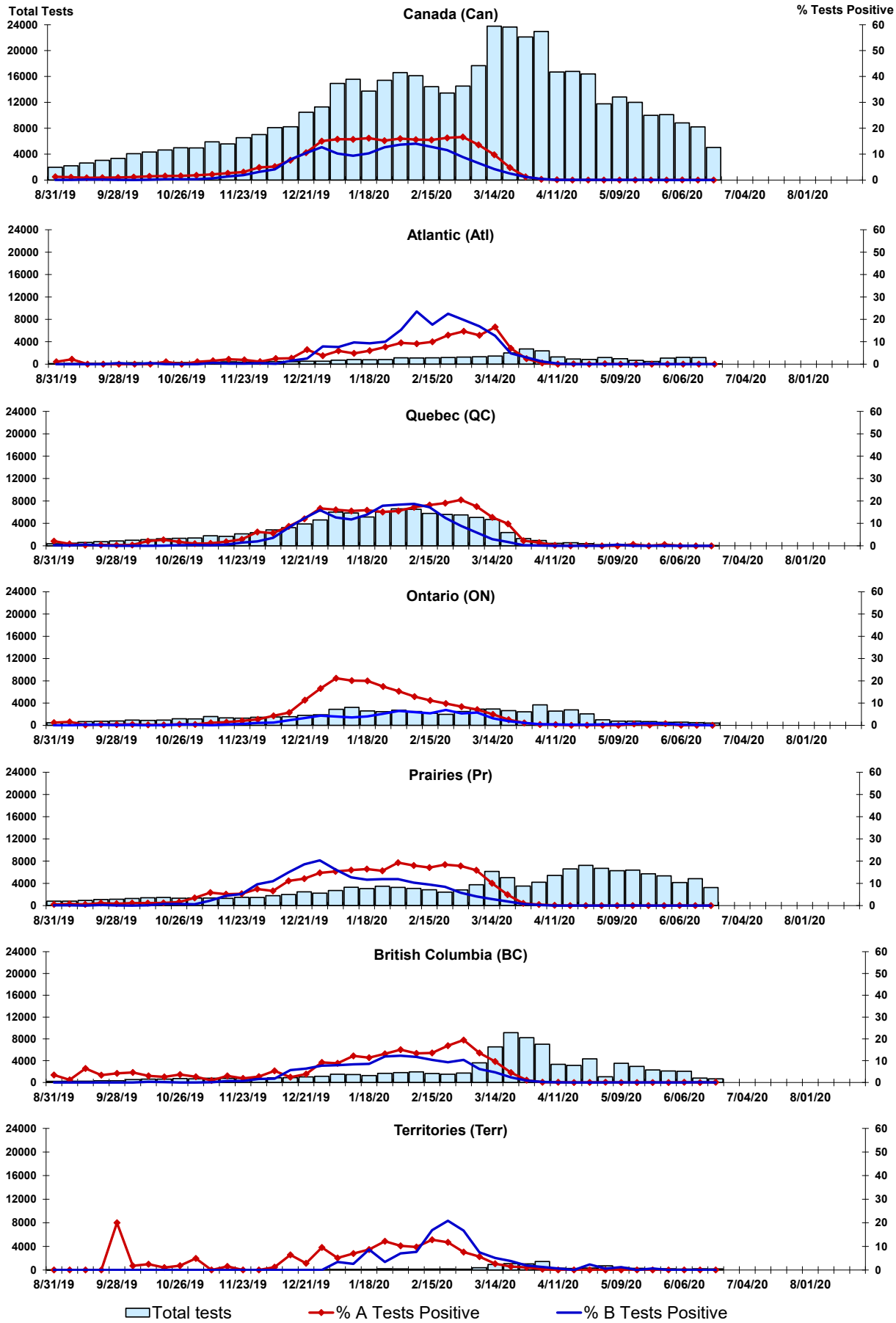


Figure 3: Positive Respiratory syncytial virus (RSV) Tests (%) in Canada by Region by Week of Report

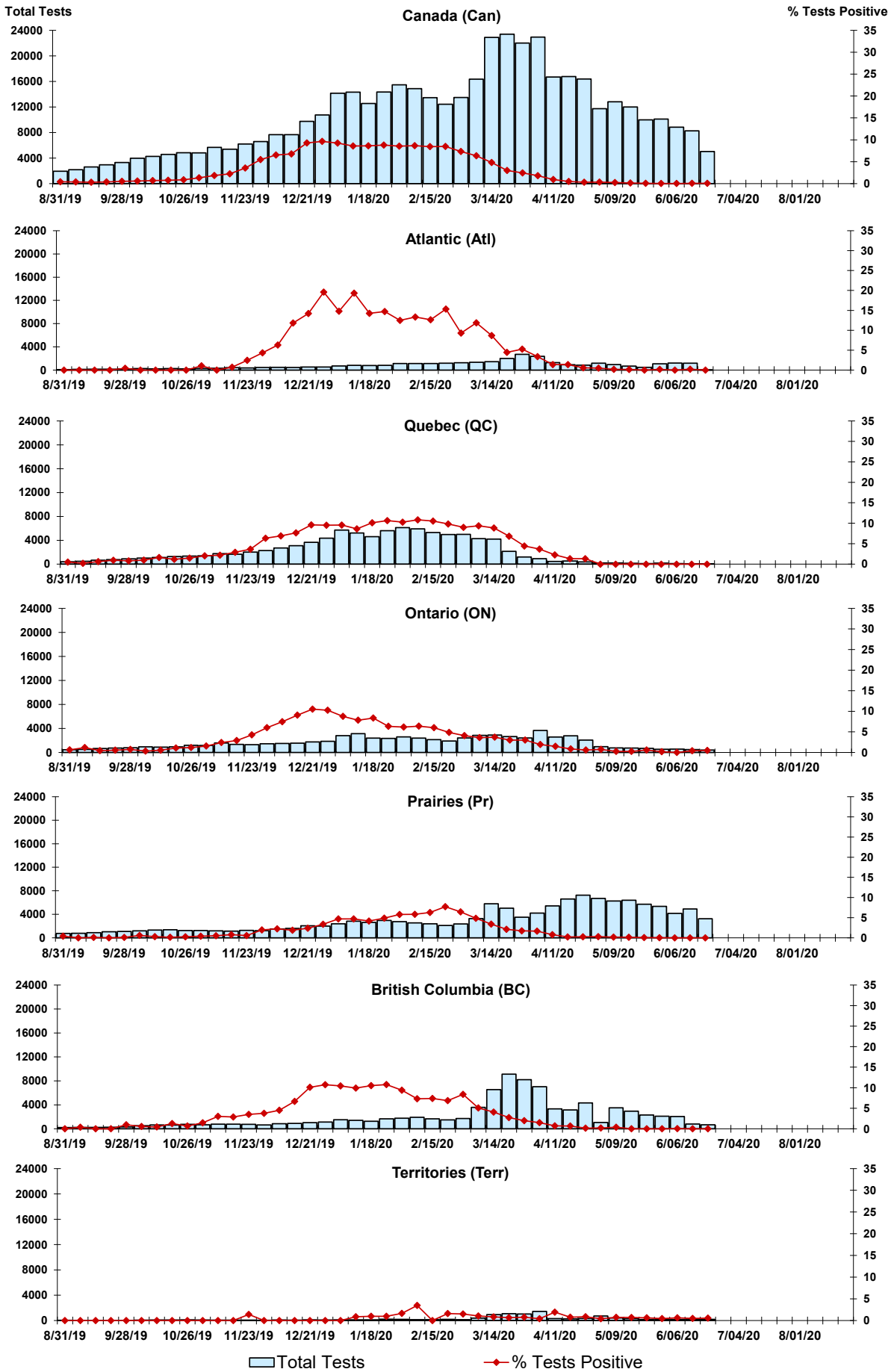


Figure 4: Positive Parainfluenza (PIV) Tests (%) in Canada by Region by Week of Report

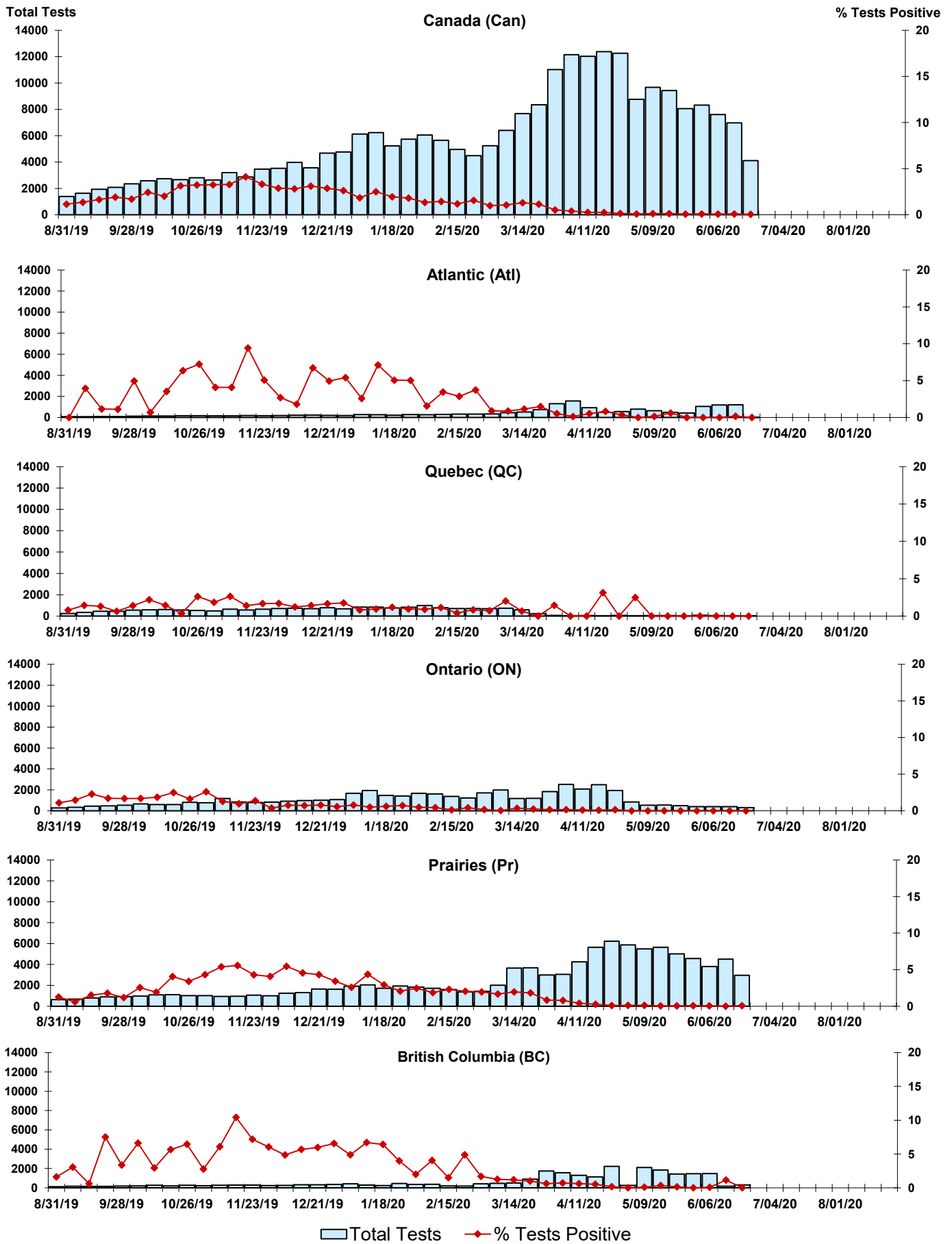


Figure 5: Positive Adenovirus (adeno) Tests (%) in Canada by Region by Week of Report

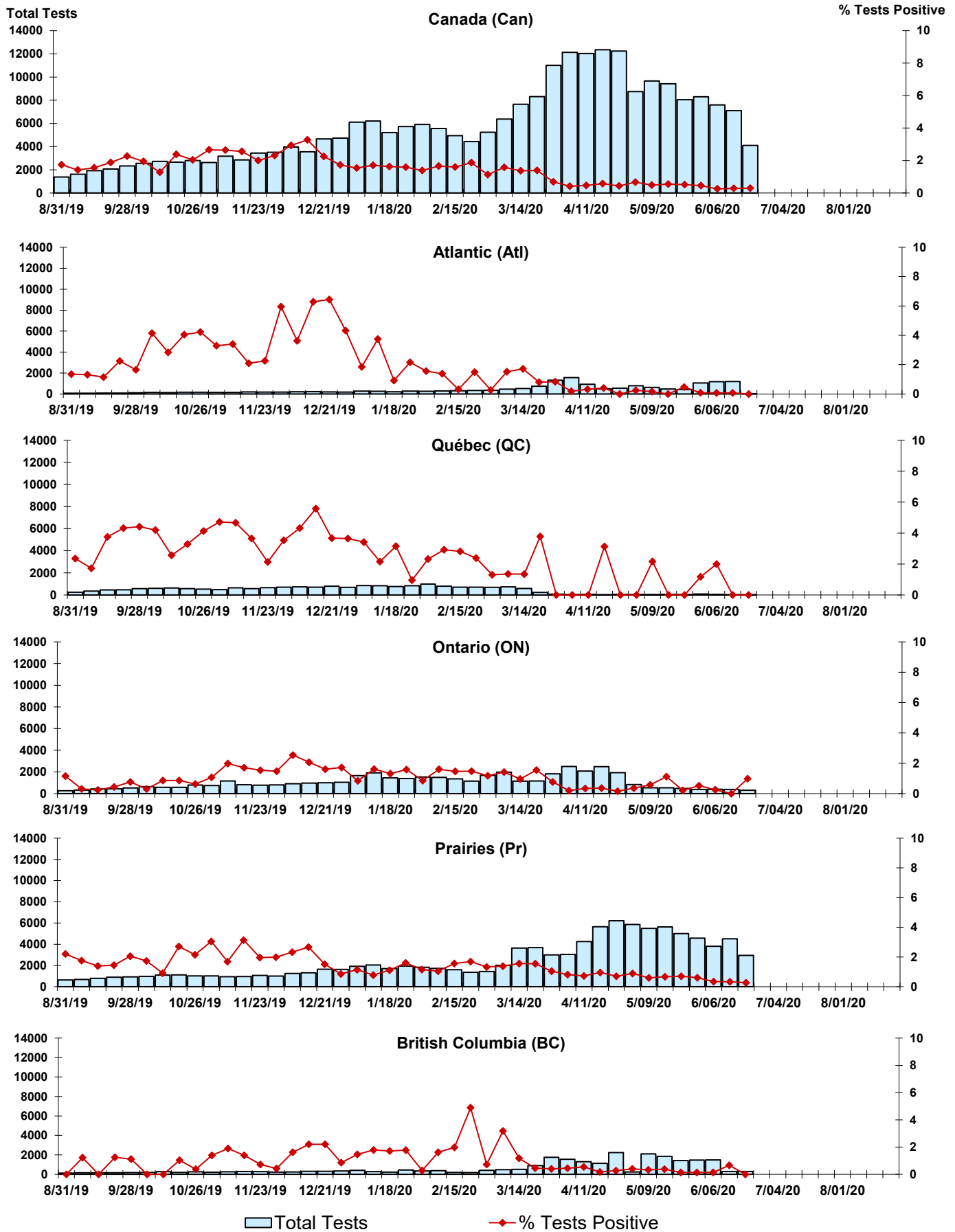


Figure 6: Positive human metapneumovirus (hMPV) Tests (%) in Canada by Region by Week of Report

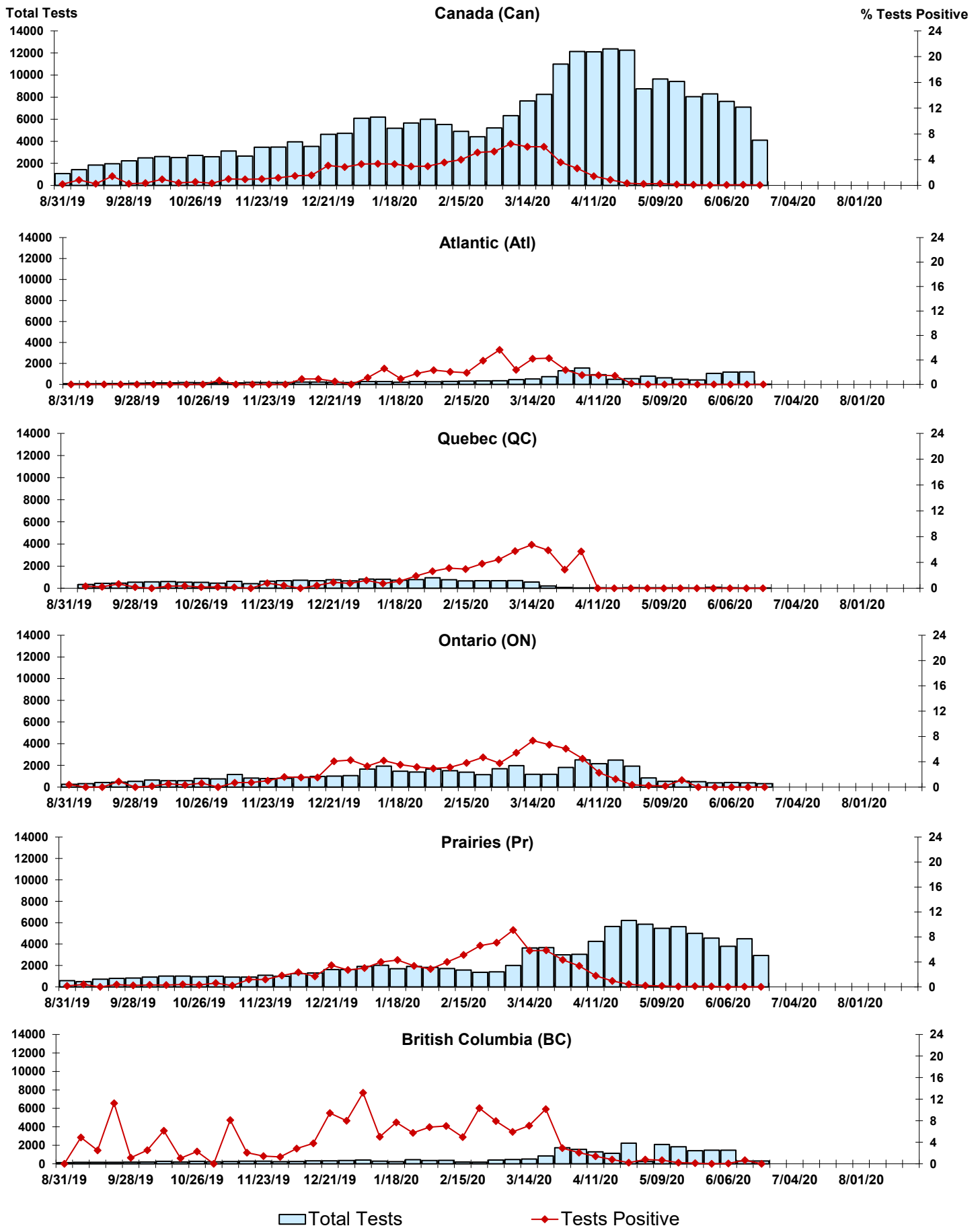


Figure 7: Positive Enterovirus/Rhinovirus (entero/rhino) Tests (%) in Canada by Region by Week of Report

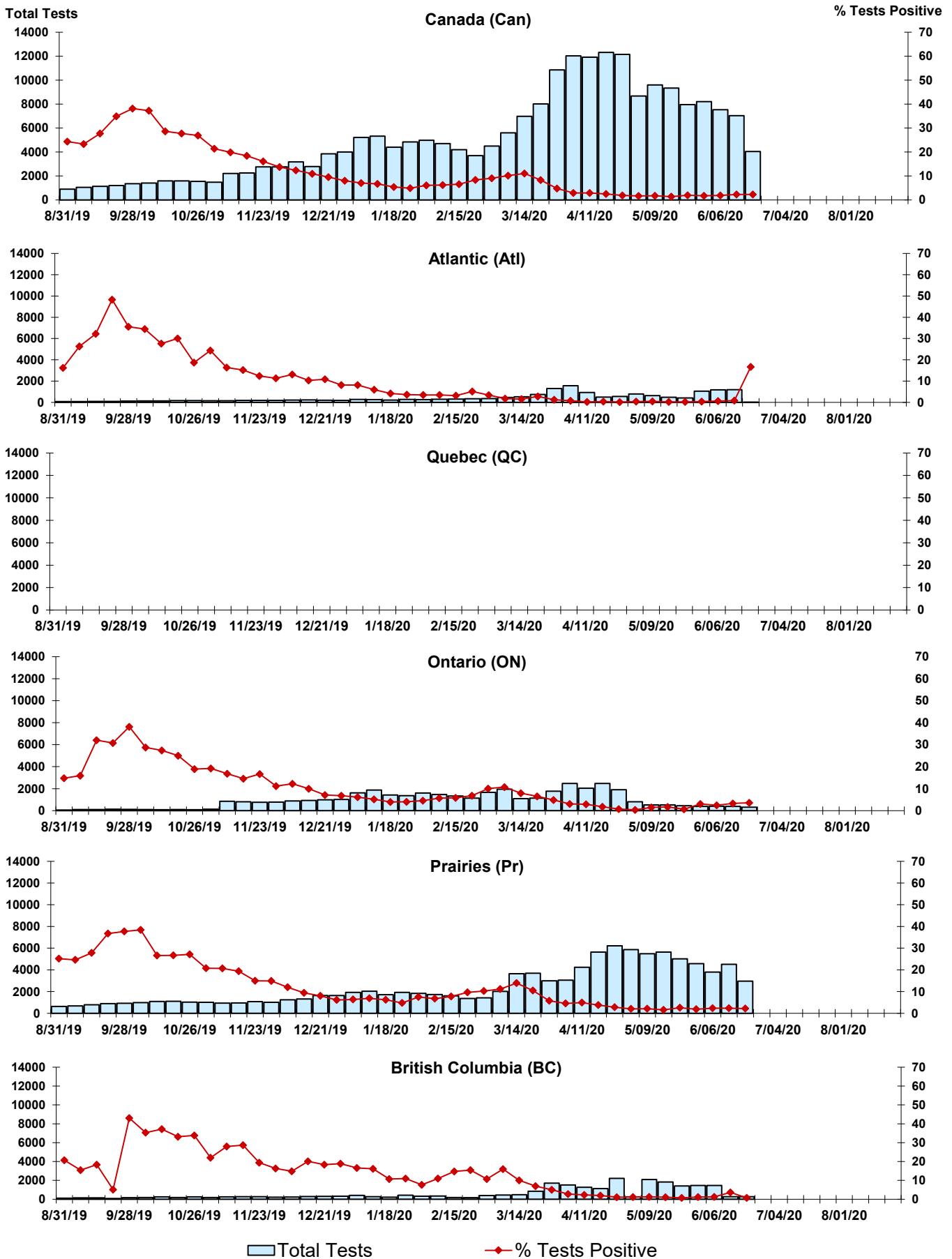
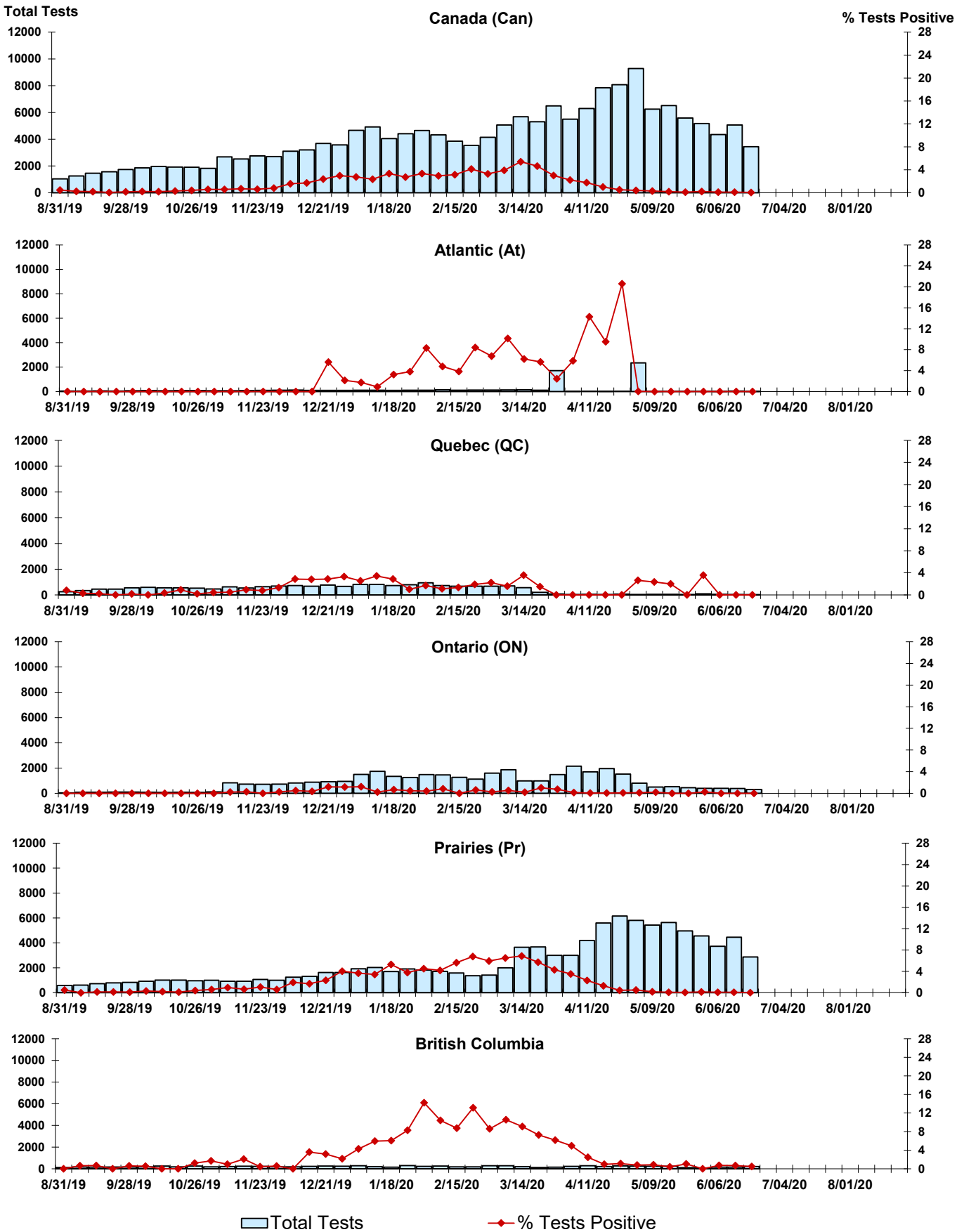


Figure 8: Positive Coronavirus (coron) Tests (%) in Canada by Region by Week of Report



Abbreviations:

A(H1N1)pdm09: Influenza A(H1N1)pdm09

A(H3): Influenza A(H3N2)

A (UnS): Influenza A (Unsubtyped)

Adeno: Adenovirus

CHEO: Children's Hospital of Eastern Ontario

Coron: Coronavirus

Entero: Enterovirus

hMPV: human metapneumovirus

HSC: Health Sciences Centre

N.A.: Not Applicable

P.H.L.: Public Health Laboratory

P.H.O.L.: Public Health Ontario Laboratory

PIV: Parainfluenza

Rhino: Rhinovirus

RSV: Respiratory syncytial virus

UHN: University Health Network

Notes:

Specimens from Yukon (YT), Northwest Territories (NT) and Nunavut (NU) are sent to reference laboratories in other provinces. Results reported for the Territories reflect the number of specimens that are identified as originating from YT, NT or NU.

Delays in the reporting of data may cause data to change retrospectively.

Due to reporting delays, the sum of weekly report totals do not add up to cumulative totals.

