

# Respiratory Virus Report, Week 29 - ending July 18, 2020

The Respiratory Virus Detection Surveillance System collects data from select laboratories across Canada on the number of tests performed and the number of tests positive for influenza and other respiratory viruses. Data are reported on a weekly basis year-round to the Centre for Immunization and Respiratory Infectious Diseases (CIRID), Public Health Agency of Canada. These data are also summarized in the weekly FluWatch report.

In this Respiratory Virus Report, the number of detections of coronavirus reflects only seasonal human coronaviruses, not the novel pandemic coronavirus (SARS-CoV2) that causes COVID-19. For information on COVID-19, see the [Coronavirus disease \(COVID-19\): Outbreak](#)

**Table 1: Respiratory Virus Detections/Isolations for the week ending July 18, 2020 (Reporting Week 202029)**

Reporting Laboratory	Flu Tested	A(H1N1)pdm09 Positive	A(H3) Positive	A(UnS) Positive	Total Flu A Positive	Total Flu B Positive	RSV Tested	RSV Positive	PIV Tested	PIV 1 Positive	PIV 2 Positive	PIV 3 Positive	PIV 4 Positive	Other PIV Positive	Adeno Tested	Adeno Positive	hMPV Tested	hMPV Positive	Entero/Rhino Tested	Entero/Rhino Positive	Coron Tested	Coron Positive
Newfoundland	982	0	0	0	0	0	982	0	982	1	0	0	0	0	982	1	982	0	982	1	N.A.	N.A.
Prince Edward Island	0	0	0	0	0	0	0	0	0	0	0	0	0	0	0	0	0	0	0	0	0	0
Nova Scotia	6	0	0	0	0	0	6	0	6	0	0	0	0	0	6	0	6	0	6	0	6	0
New Brunswick	15	0	0	0	0	0	15	0	10	0	0	0	0	0	10	0	10	0	10	0	10	0
<b>Atlantic</b>	<b>1003</b>	<b>0</b>	<b>0</b>	<b>0</b>	<b>0</b>	<b>0</b>	<b>1003</b>	<b>0</b>	<b>998</b>	<b>1</b>	<b>0</b>	<b>0</b>	<b>0</b>	<b>0</b>	<b>998</b>	<b>1</b>	<b>998</b>	<b>0</b>	<b>998</b>	<b>1</b>	<b>16</b>	<b>0</b>
Région Nord-Est	7	0	0	0	0	0	6	0	0	0	0	0	0	0	0	0	0	0	N.A.	N.A.	0	0
Québec-Chaudière-Appalaches	15	0	0	0	0	0	17	0	14	0	0	0	0	0	14	0	12	0	N.A.	N.A.	11	0
Centre-du-Québec	3	0	0	0	0	0	2	0	1	0	0	0	0	0	1	0	1	0	N.A.	N.A.	1	0
Montréal-Laval	84	0	0	0	0	0	84	0	76	1	0	0	0	0	76	1	76	0	N.A.	N.A.	76	0
Ouest du Québec	2	0	0	0	0	0	2	0	0	0	0	0	0	0	0	0	0	0	N.A.	N.A.	0	0
Montérégie	0	0	0	0	0	0	0	0	0	0	0	0	0	0	0	0	0	0	N.A.	N.A.	0	0
<b>Province of Québec</b>	<b>111</b>	<b>0</b>	<b>0</b>	<b>0</b>	<b>0</b>	<b>0</b>	<b>111</b>	<b>0</b>	<b>91</b>	<b>1</b>	<b>0</b>	<b>0</b>	<b>0</b>	<b>0</b>	<b>91</b>	<b>1</b>	<b>89</b>	<b>0</b>	<b>N.A.</b>	<b>N.A.</b>	<b>88</b>	<b>0</b>
P.H.O.L. - Ottawa	10	0	0	0	0	0	10	0	10	0	0	0	0	0	10	0	10	0	10	0	10	0
CHEO - Ottawa	0	0	0	0	0	0	0	0	0	0	0	0	0	0	0	0	0	0	0	0	0	0
P.H.O.L. - Kingston	13	0	0	0	0	0	13	0	13	0	0	0	0	0	13	0	13	0	13	0	13	0
UHN / Mount Sinai Hospital	11	0	0	0	0	0	11	0	11	0	0	0	0	0	0	0	11	0	0	0	N.A.	N.A.
P.H.O.L. - Toronto	110	0	0	0	0	0	110	0	110	0	0	0	0	0	110	1	110	0	110	0	110	0
Sick Kids Hospital - Toronto	0	0	0	0	0	0	0	0	0	0	0	0	0	0	0	0	0	0	0	0	0	0
Sunnybrook & Women's College HSC	0	0	0	0	0	0	0	0	0	0	0	0	0	0	0	0	0	0	0	0	0	0
P.H.O.L. - Sault Ste. Marie	11	0	0	0	0	0	11	0	11	0	0	0	0	0	11	0	11	0	11	0	11	0
P.H.O.L. - Timmins	0	0	0	0	0	0	0	0	0	0	0	0	0	0	0	0	0	0	0	0	0	0
St. Joseph's - London	14	0	0	0	0	0	14	0	14	0	0	0	0	0	14	0	14	0	14	0	14	0
P.H.O.L. - London	24	0	0	0	0	0	24	0	24	0	0	0	0	0	24	0	23	0	24	0	23	0
P.H.O.L. - Orillia	4	0	0	0	0	0	4	0	4	0	0	0	0	0	4	0	4	0	4	0	4	0
P.H.O.L. - Thunder Bay	11	0	0	0	0	0	11	0	11	0	0	0	0	0	11	1	11	0	11	3	11	0
P.H.O.L. - Sudbury	3	0	0	0	0	0	3	0	3	0	0	0	0	0	3	0	3	0	3	0	3	0
P.H.O.L. - Hamilton	35	0	0	0	0	0	35	0	35	0	0	0	0	0	35	0	35	0	35	0	35	0
P.H.O.L. - Peterborough	10	0	0	0	0	0	10	0	10	0	0	0	0	0	10	0	10	0	10	0	10	0
St. Joseph's - Hamilton	293	0	0	0	0	0	293	0	293	0	0	0	0	0	293	0	293	0	293	0	0	0
<b>Province of Ontario</b>	<b>549</b>	<b>0</b>	<b>0</b>	<b>0</b>	<b>0</b>	<b>0</b>	<b>549</b>	<b>0</b>	<b>549</b>	<b>0</b>	<b>0</b>	<b>0</b>	<b>0</b>	<b>0</b>	<b>538</b>	<b>2</b>	<b>548</b>	<b>0</b>	<b>538</b>	<b>3</b>	<b>244</b>	<b>0</b>
Province of Manitoba	308	0	0	0	0	0	308	1	45	0	0	0	0	0	45	0	41	0	45	8	41	0
Regina	23	0	0	0	0	0	23	0	29	0	0	0	0	0	29	0	29	0	29	3	29	0
Saskatoon	0	0	0	0	0	0	0	0	0	0	0	0	0	0	0	0	0	0	0	0	0	0
Province of Saskatchewan	23	0	0	0	0	0	23	0	29	0	0	0	0	0	29	0	29	0	29	3	29	0
Province of Alberta	2623	0	0	0	0	0	2623	0	2623	0	2	0	0	0	2623	5	2623	0	2623	118	2623	1
<b>Prairies</b>	<b>2954</b>	<b>0</b>	<b>0</b>	<b>0</b>	<b>0</b>	<b>0</b>	<b>2954</b>	<b>1</b>	<b>2697</b>	<b>0</b>	<b>2</b>	<b>0</b>	<b>0</b>	<b>0</b>	<b>2697</b>	<b>5</b>	<b>2693</b>	<b>0</b>	<b>2697</b>	<b>129</b>	<b>2693</b>	<b>1</b>
<b>British Columbia</b>	<b>949</b>	<b>0</b>	<b>0</b>	<b>0</b>	<b>0</b>	<b>0</b>	<b>949</b>	<b>0</b>	<b>162</b>	<b>0</b>	<b>0</b>	<b>0</b>	<b>0</b>	<b>0</b>	<b>162</b>	<b>0</b>	<b>162</b>	<b>0</b>	<b>155</b>	<b>6</b>	<b>155</b>	<b>0</b>
Yukon	390	0	0	0	0	0	390	0	N.A.	N.A.	N.A.	N.A.	N.A.	N.A.	N.A.	N.A.	N.A.	N.A.	N.A.	N.A.	N.A.	N.A.
Northwest Territories	7	0	0	0	0	0	7	0	7	0	0	0	0	0	7	0	7	0	7	0	7	0
Nunavut	58	0	0	0	0	0	58	0	58	0	0	0	0	0	58	1	58	1	58	12	4	0
<b>Territories</b>	<b>455</b>	<b>0</b>	<b>0</b>	<b>0</b>	<b>0</b>	<b>0</b>	<b>455</b>	<b>0</b>	<b>65</b>	<b>0</b>	<b>0</b>	<b>0</b>	<b>0</b>	<b>0</b>	<b>65</b>	<b>1</b>	<b>65</b>	<b>1</b>	<b>65</b>	<b>12</b>	<b>11</b>	<b>0</b>
<b>CANADA</b>	<b>6021</b>	<b>0</b>	<b>0</b>	<b>0</b>	<b>0</b>	<b>0</b>	<b>6021</b>	<b>1</b>	<b>4562</b>	<b>2</b>	<b>2</b>	<b>0</b>	<b>0</b>	<b>0</b>	<b>4551</b>	<b>10</b>	<b>4555</b>	<b>1</b>	<b>4453</b>	<b>151</b>	<b>3207</b>	<b>1</b>

Specimens from Yukon (YT), Northwest Territories (NT) and Nunavut (NU) are sent to reference laboratories in other provinces and reported results reflect specimens identified as originating from YT, NT or NU.

Results from British Columbia comprise of specimens from the following sites: BC Children's and Women's Hospital, Children's and Women's Hospital Laboratory, Fraser Health Medical Microbiology Laboratory, Island Health, Providence Health Care, Powell River Hospital, St. Paul's Hospital, Vancouver General Hospital, Victoria General Hospital, Victoria Coastal Health, BCCDC Public Health Laboratory, Interior Health Authority sites and Northern Health Authority sites.

Delays in the reporting of data may cause data to change retrospectively.

For BC, only data from subtyped influenza A specimens are included in the weekly number of influenza detections and so the sum of A(H1N1)pdm09, A(H3), and A(UnS) positive results may not equal the sum of total Flu A positive results.

**Table 2: Respiratory Virus Detections/Isolations for the period August 31, 2019 - July 18, 2020 (Reporting Weeks 201935-202029)**

Reporting Laboratory	Flu Tested	A(H1N1)pdm09 Positive	A(H3) Positive	A(UnS) Positive	Total Flu A Positive	Total Flu B Positive	RSV Tested	RSV Positive	PIV Tested	PIV 1 Positive	PIV 2 Positive	PIV 3 Positive	PIV 4 Positive	Other PIV Positive	Adeno Tested	Adeno Positive	hMPV Tested	hMPV Positive	Entero/Rhino Tested	Entero/Rhino Positive	Coron Tested	Coron Positive
Newfoundland	19346	8	33	167	208	513	19346	337	19346	149	2	13	0	0	19346	124	19346	190	19346	394	N.A.	N.A.
Prince Edward Island	1268	0	0	144	144	78	1268	146	48	1	0	0	1	0	48	0	46	0	48	16	48	2
Nova Scotia	6691	3	2	196	201	248	6794	625	661	13	1	3	5	0	695	12	695	11	695	77	708	14
New Brunswick	11891	61	29	957	1047	1292	11832	1077	2469	53	7	0	13	0	2469	63	2469	16	2469	290	6421	125
<b>Atlantic</b>	<b>39196</b>	<b>72</b>	<b>64</b>	<b>1464</b>	<b>1600</b>	<b>2131</b>	<b>39240</b>	<b>2185</b>	<b>22524</b>	<b>216</b>	<b>10</b>	<b>16</b>	<b>19</b>	<b>0</b>	<b>22558</b>	<b>199</b>	<b>22556</b>	<b>217</b>	<b>22558</b>	<b>777</b>	<b>7177</b>	<b>141</b>
Région Nord-Est	9282	0	0	1136	1136	1323	7953	645	0	0	0	0	0	0	0	0	0	0	N.A.	N.A.	0	0
Québec-Chaudière-Appalaches	14057	0	0	1900	1900	1829	13972	1318	2784	31	4	3	14	0	2831	80	2225	25	N.A.	N.A.	2165	35
Centre-du-Québec	19017	0	0	2909	2909	2395	15318	1385	60	0	0	1	0	0	60	0	60	0	N.A.	N.A.	60	1
Montréal-Laval	38495	0	0	4023	4023	2411	37341	2399	17208	146	5	35	13	0	17208	524	16744	270	N.A.	N.A.	17054	265
Ouest du Québec	12604	0	0	1745	1745	1278	11756	1089	0	0	0	0	0	0	0	0	0	0	N.A.	N.A.	0	0
Montérégie	8520	0	0	1133	1133	791	8292	610	0	0	0	0	0	0	0	0	0	0	N.A.	N.A.	0	0
<b>Province of Québec</b>	<b>101975</b>	<b>0</b>	<b>0</b>	<b>12846</b>	<b>12846</b>	<b>10027</b>	<b>94632</b>	<b>7446</b>	<b>20052</b>	<b>177</b>	<b>9</b>	<b>39</b>	<b>27</b>	<b>0</b>	<b>20099</b>	<b>604</b>	<b>19029</b>	<b>295</b>	<b>N.A.</b>	<b>N.A.</b>	<b>19279</b>	<b>301</b>
P.H.O.L. - Ottawa	1904	108	61	3	172	71	1895	86	1870	2	0	0	0	0	1870	18	1856	61	1714	78	1699	0
CHEO - Ottawa	10199	3	0	663	666	465	10199	692	1070	17	0	5	10	5	1070	20	1070	20	1073	170	1061	31
P.H.O.L. - Kingston	1608	62	27	4	93	23	1586	68	1582	1	0	0	0	0	1582	17	1573	60	1413	64	1400	0
UHN / Mount Sinai Hospital	12066	9	0	651	660	218	12066	348	672	7	2	10	2	0	0	0	766	16	0	0	N.A.	N.A.
P.H.O.L. - Toronto	18664	1349	144	36	1529	355	18200	416	18121	34	0	3	0	0	18121	158	17901	440	15577	811	15337	0
Sick Kids Hospital - Toronto	2407	104	13	99	216	168	1936	208	1936	26	5	8	27	0	1936	53	1936	48	1936	366	1936	92
Sunnybrook & Women's College HSC	3456	0	0	124	124	25	3456	64	3456	9	0	17	0	0	3197	11	3316	35	3316	66	120	0
P.H.O.L. - Sault Ste. Marie	621	20	0	0	20	8	597	28	598	1	0	0	0	0	598	5	595	33	547	14	544	0
P.H.O.L. - Timmins	695	65	3	2	70	12	663	32	666	0	0	0	0	0	666	1	663	30	638	5	633	0
St. Joseph's - London	4738	0	0	238	238	114	4736	334	1702	19	4	3	14	0	1702	24	1702	33	925	112	850	22
P.H.O.L. - London	5437	309	112	9	430	145	5402	250	5388	8	0	0	0	0	5390	49	5346	180	4932	296	4878	0
P.H.O.L. - Orillia	1700	81	31	3	115	33	1697	89	1694	4	0	0	0	0	1694	8	1689	50	1503	81	1496	0
P.H.O.L. - Thunder Bay	1481	82	17	9	108	45	1479	64	1479	0	0	1	0	1	1479	21	1468	52	1431	110	1419	0
P.H.O.L. - Sudbury	935	29	14	4	47	15	929	45	930	0	0	1	0	0	930	9	920	14	858	28	847	0
P.H.O.L. - Hamilton	5212	286	39	12	337	117	5063	164	5044	10	1	0	0	0	5044	69	5023	139	4449	339	4424	0
P.H.O.L. - Peterborough	1278	66	4	1	71	10	1269	33	1268	3	0	0	0	0	1267	10	1263	47	1013	77	1006	0
St. Joseph's - Hamilton	32799	0	0	1617	1617	806	32799	1275	32799	119	6	26	0	0	32799	274	32799	461	32799	1294	0	0
<b>Province of Ontario</b>	<b>105200</b>	<b>2573</b>	<b>465</b>	<b>3475</b>	<b>6513</b>	<b>2630</b>	<b>103972</b>	<b>4196</b>	<b>80275</b>	<b>260</b>	<b>18</b>	<b>74</b>	<b>53</b>	<b>6</b>	<b>79345</b>	<b>747</b>	<b>79886</b>	<b>1719</b>	<b>74124</b>	<b>3911</b>	<b>37650</b>	<b>145</b>
Manitoba	23773	174	134	1340	1648	889	23435	1009	4390	48	9	4	8	0	4390	61	3235	59	4390	508	2802	79
Regina	14088	43	26	1195	1264	665	14097	1043	6268	149	16	6	31	0	6268	101	6191	205	6268	895	6268	151
Saskatoon	4455	0	0	318	318	235	4455	182	4519	98	12	6	7	0	4519	66	4522	27	4519	530	4519	45
Province of Saskatchewan	18543	43	26	1513	1582	900	18552	1225	10787	247	28	12	38	0	10787	167	10713	232	10787	1425	10787	196
Province of Alberta	108059	1741	1287	1346	4374	3417	100605	0	100605	496	105	99	271	0	100605	912	100605	1631	100605	6314	100605	1745
<b>Prairies</b>	<b>150375</b>	<b>1958</b>	<b>1447</b>	<b>4199</b>	<b>7604</b>	<b>5206</b>	<b>142592</b>	<b>2234</b>	<b>115782</b>	<b>791</b>	<b>142</b>	<b>115</b>	<b>317</b>	<b>0</b>	<b>115782</b>	<b>1140</b>	<b>114553</b>	<b>1922</b>	<b>115782</b>	<b>8247</b>	<b>114194</b>	<b>2020</b>
<b>British Columbia</b>	<b>89911</b>	<b>277</b>	<b>244</b>	<b>1852</b>	<b>4091</b>	<b>2575</b>	<b>89551</b>	<b>2771</b>	<b>26739</b>	<b>185</b>	<b>60</b>	<b>38</b>	<b>52</b>	<b>86</b>	<b>26865</b>	<b>169</b>	<b>26679</b>	<b>691</b>	<b>25982</b>	<b>1821</b>	<b>9349</b>	<b>316</b>
Yukon	8651	4	8	55	73	45	8651	23	N.A.	N.A.	N.A.	N.A.	N.A.	N.A.	N.A.	N.A.	N.A.	N.A.	N.A.	N.A.	N.A.	N.A.
Northwest Territories	1603	90	19	1	110	191	1592	0	1592	14	2	13	13	0	1592	22	1592	90	1592	197	1592	77
Nunavut	1514	5	14	42	61	73	1511	53	1511	36	4	1	6	0	1511	33	1511	74	1511	232	320	41
<b>Territories</b>	<b>11768</b>	<b>99</b>	<b>41</b>	<b>98</b>	<b>244</b>	<b>309</b>	<b>11754</b>	<b>76</b>	<b>3103</b>	<b>50</b>	<b>6</b>	<b>14</b>	<b>19</b>	<b>0</b>	<b>3103</b>	<b>55</b>	<b>3103</b>	<b>164</b>	<b>3103</b>	<b>429</b>	<b>1912</b>	<b>118</b>
<b>CANADA</b>	<b>498425</b>	<b>4979</b>	<b>2261</b>	<b>23934</b>	<b>32898</b>	<b>22878</b>	<b>481741</b>	<b>18908</b>	<b>268475</b>	<b>1679</b>	<b>245</b>	<b>296</b>	<b>487</b>	<b>92</b>	<b>267752</b>	<b>2914</b>	<b>265806</b>	<b>5008</b>	<b>241549</b>	<b>15185</b>	<b>189561</b>	<b>3041</b>

Specimens from YT, NT and NU are sent to reference laboratories in other provinces and reported results reflect specimens identified as originating from YT, NT or NU.

Results from British Columbia comprise of specimens from the following sites: BC Children's and Women's Hospital, Children's and Women's Hospital Laboratory, Fraser Health Medical Microbiology Laboratory, Island Health, Providence Health Care, Powell River Hospital, St. Paul's Hospital, Vancouver General Hospital, Victoria General Hospital, Victoria Coastal Health, BCCDC P

Delays in the reporting of data may cause data to change retrospectively. Due to reporting delays, the sum of weekly report totals do not add up to cumulative totals.

For BC, only data from subtyped influenza A specimens are included in the weekly number of influenza detections and so the sum of A(H1N1)pdm09, A(H3), and A(UnS) positive results may not equal the sum of total Flu A positive results.

Figure 1: Number positive laboratory tests for other respiratory viruses by report week, Canada, 2019-20

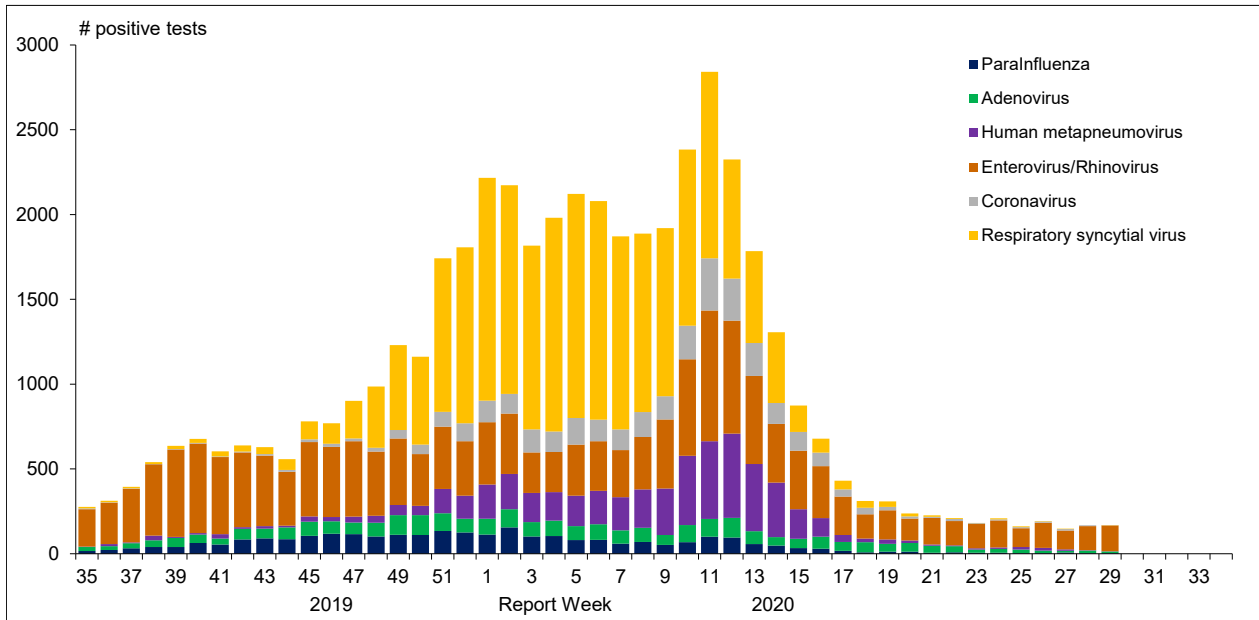


Figure 2 : Positive Influenza Tests (%) in Canada by Region by Week of Report

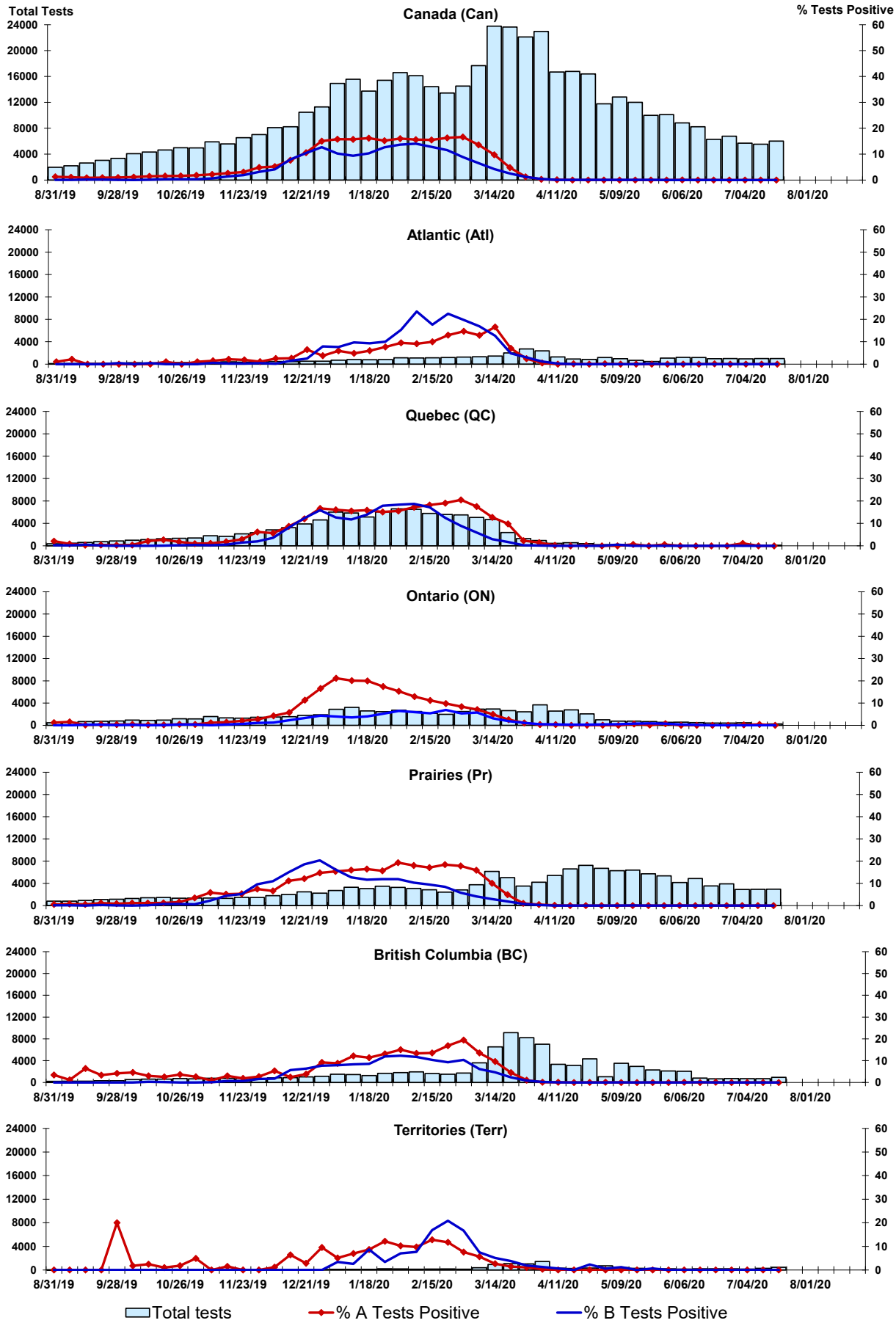


Figure 3: Positive Respiratory syncytial virus (RSV) Tests (%) in Canada by Region by Week of Report

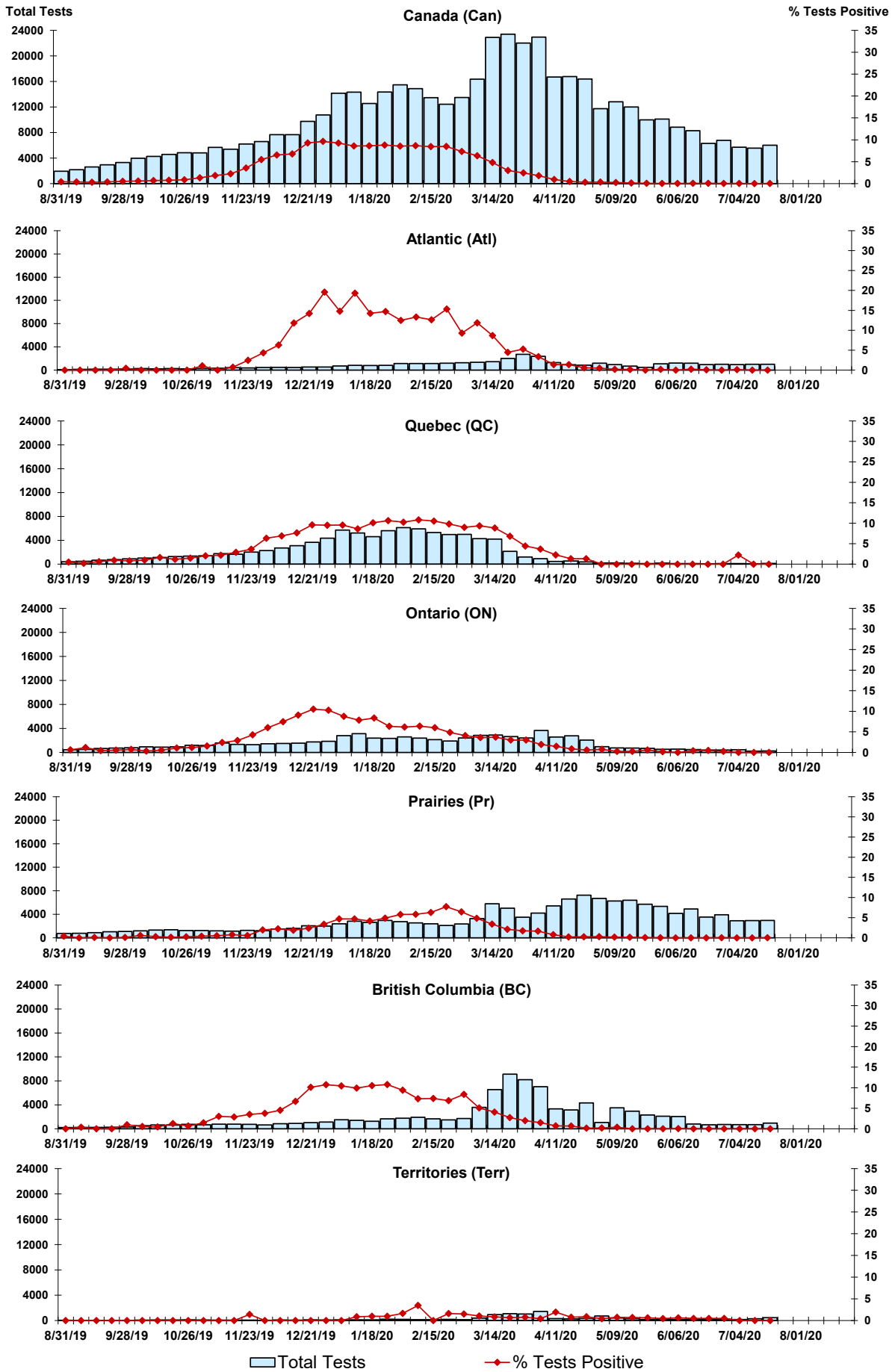


Figure 4: Positive Parainfluenza (PIV) Tests (%) in Canada by Region by Week of Report

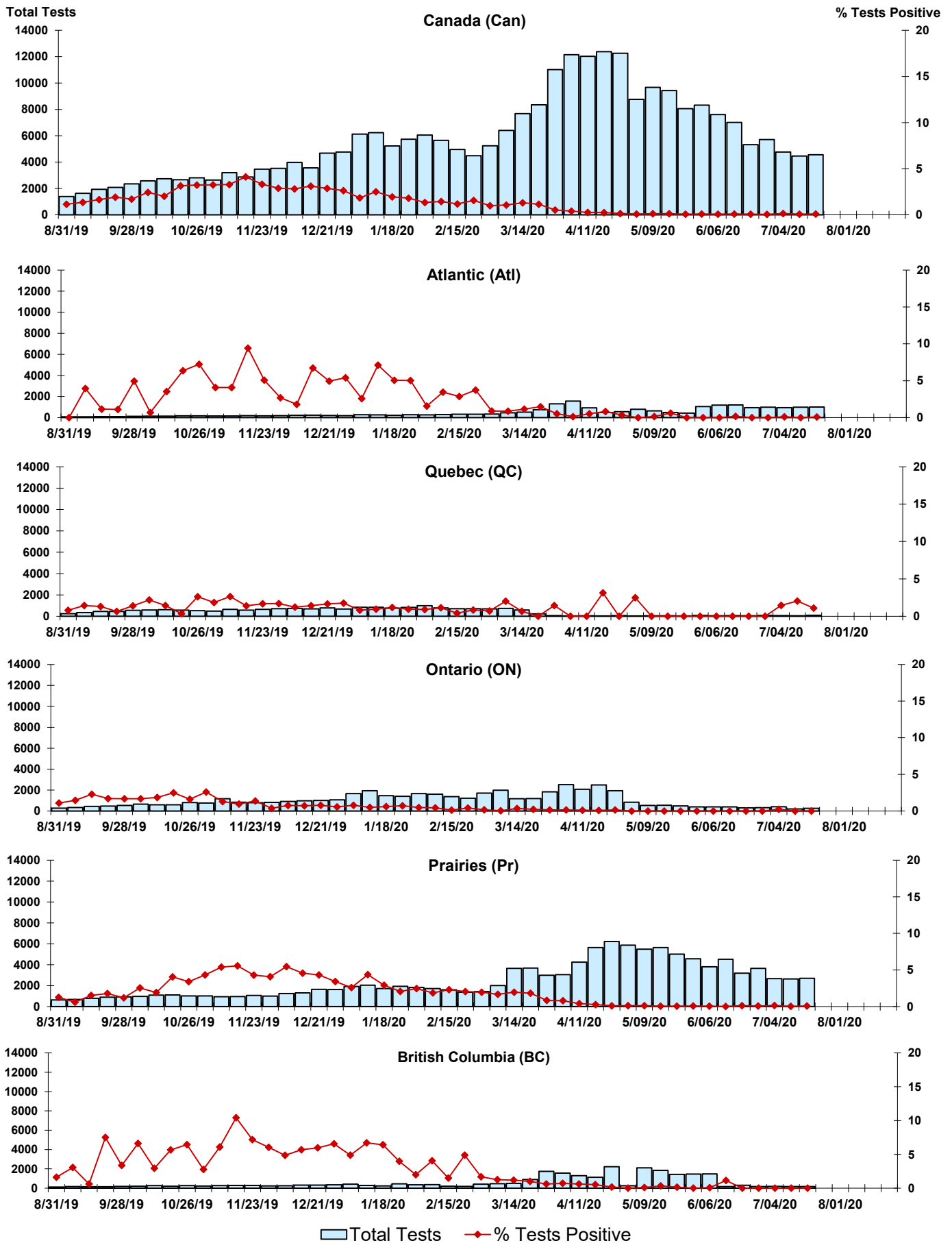


Figure 5: Positive Adenovirus (adeno) Tests (%) in Canada by Region by Week of Report

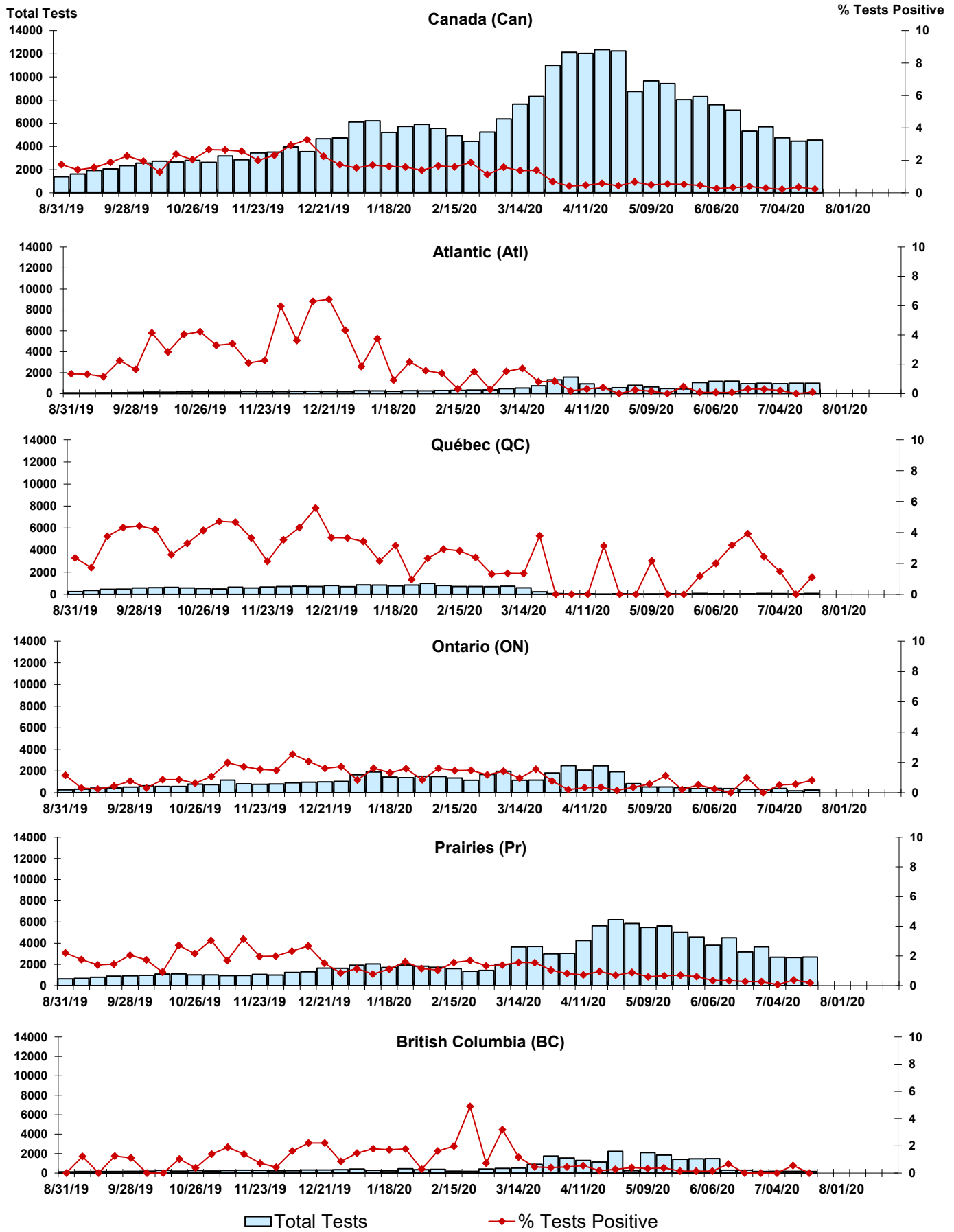


Figure 6: Positive human metapneumovirus (hMPV) Tests (%) in Canada by Region by Week of Report

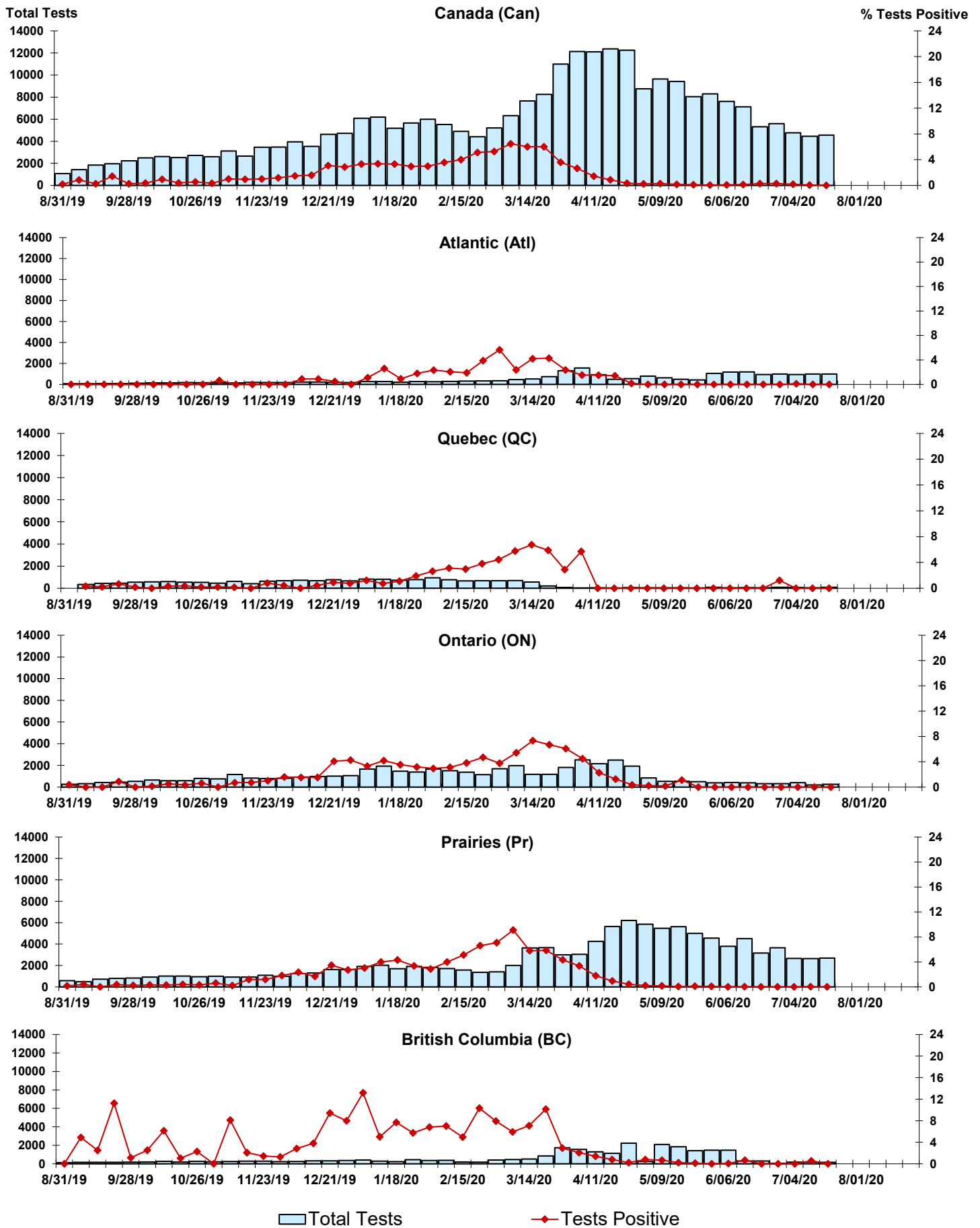




Figure 7: Positive Enterovirus/Rhinovirus (entero/rhino) Tests (%) in Canada by Region by Week of Report

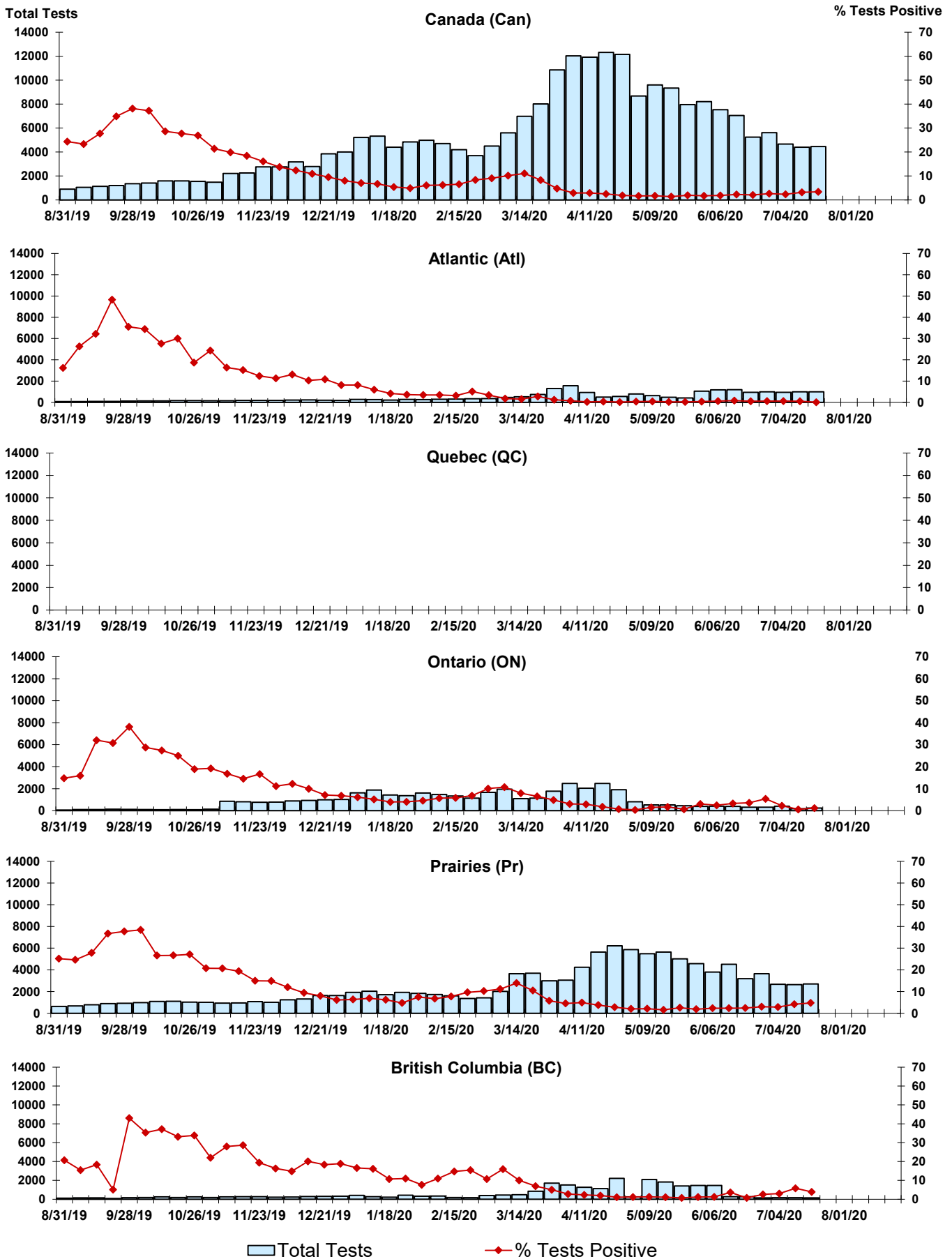
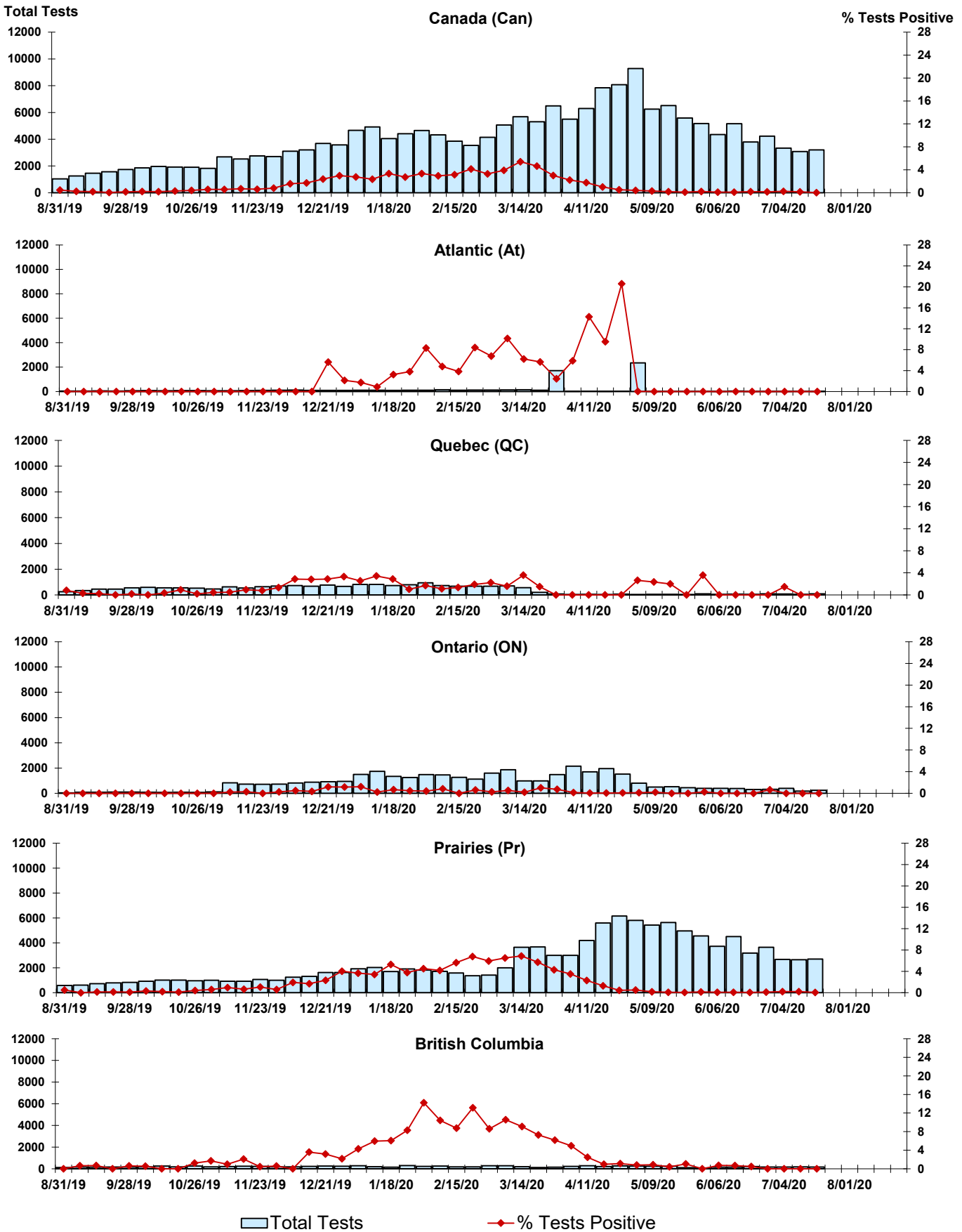


Figure 8: Positive Coronavirus (coron) Tests (%) in Canada by Region by Week of Report



## Abbreviations:

A(H1N1)pdm09: Influenza A(H1N1)pdm09

A(H3): Influenza A(H3N2)

A (UnS): Influenza A (Unsubtyped)

Adeno: Adenovirus

CHEO: Children's Hospital of Eastern Ontario

Coron: Coronavirus

Entero: Enterovirus

hMPV: human metapneumovirus

HSC: Health Sciences Centre

N.A.: Not Applicable

P.H.L.: Public Health Laboratory

P.H.O.L.: Public Health Ontario Laboratory

PIV: Parainfluenza

Rhino: Rhinovirus

RSV: Respiratory syncytial virus

UHN: University Health Network

## Notes:

Specimens from Yukon (YT), Northwest Territories (NT) and Nunavut (NU) are sent to reference laboratories in other provinces. Results reported for the Territories reflect the number of specimens that are identified as originating from YT, NT or NU.

Delays in the reporting of data may cause data to change retrospectively.

Due to reporting delays, the sum of weekly report totals do not add up to cumulative totals.

