

Respiratory Virus Report, Week 34 - ending August 22, 2020

The Respiratory Virus Detection Surveillance System collects data from select laboratories across Canada on the number of tests performed and the number of tests positive for influenza and other respiratory viruses. Data are reported on a weekly basis year-round to the Centre for Immunization and Respiratory Infectious Diseases (CIRID), Public Health Agency of Canada. These data are also summarized in the weekly FluWatch report.

In this Respiratory Virus Report, the number of detections of coronavirus reflects only seasonal human coronaviruses, not the novel pandemic coronavirus (SARS-CoV2) that causes COVID-19. For information on COVID-19, see the [Coronavirus disease \(COVID-19\): Outbreak](#)

Table 1: Respiratory Virus Detections/Isolations for the week ending August 22, 2020 (Reporting Week 202034)

Reporting Laboratory	Flu Tested	A(H1N1)pdm09 Positive	A(H3) Positive	A(UnS) Positive	Total Flu A Positive	Total Flu B Positive	RSV Tested	RSV Positive	PIV Tested	PIV 1 Positive	PIV 2 Positive	PIV 3 Positive	PIV 4 Positive	Other PIV Positive	Adeno Tested	Adeno Positive	hMPV Tested	hMPV Positive	Entero/Rhino Tested	Entero/Rhino Positive	Coron Tested	Coron Positive
Newfoundland	168	0	0	0	0	0	168	2	168	0	0	0	0	0	168	0	168	0	168	6	N.A.	N.A.
Prince Edward Island	0	0	0	0	0	0	0	0	0	0	0	0	0	0	0	0	0	0	0	0	0	0
Nova Scotia	9	0	0	0	0	0	9	0	9	0	0	0	0	5	9	0	9	0	9	0	9	0
New Brunswick	18	0	0	0	0	0	18	0	10	0	0	0	0	0	10	0	10	0	10	1	10	0
Atlantic	195	0	0	0	0	0	195	2	187	0	0	0	0	5	187	0	187	0	187	7	19	0
Région Nord-Est	18	0	0	0	0	0	16	0	0	0	0	0	0	0	0	0	0	0	N.A.	N.A.	0	0
Québec-Chaudière-Appalaches	3	0	0	0	0	0	16	0	13	0	0	0	0	0	13	1	13	0	N.A.	N.A.	13	0
Centre-du-Québec	5	0	0	0	0	0	4	0	4	0	0	0	0	0	4	0	4	0	N.A.	N.A.	4	0
Montréal-Laval	91	0	0	0	0	0	91	0	87	0	0	0	0	0	87	0	86	0	N.A.	N.A.	86	2
Ouest du Québec	4	0	0	0	0	0	4	0	0	0	0	0	0	0	0	0	0	0	N.A.	N.A.	0	0
Montérégie	3	0	0	0	0	0	3	0	0	0	0	0	0	0	0	0	0	0	N.A.	N.A.	0	0
Province of Québec	124	0	0	0	0	0	134	0	104	0	0	0	0	0	104	1	103	0	N.A.	N.A.	103	2
P.H.O.L. - Ottawa	8	0	0	0	0	0	8	0	8	0	0	0	0	0	8	0	8	0	8	0	8	0
CHEO - Ottawa	67	0	0	0	0	0	67	1	12	0	0	0	0	0	12	0	12	0	12	1	12	0
P.H.O.L. - Kingston	5	0	0	0	0	0	2	0	2	0	0	0	0	0	2	0	2	0	2	0	2	0
UHN / Mount Sinai Hospital	68	0	0	0	0	0	68	0	13	0	0	0	0	0	0	0	13	0	0	0	N.A.	N.A.
P.H.O.L. - Toronto	92	0	0	0	0	0	92	0	92	0	0	0	0	0	92	0	92	0	92	2	92	2
Sick Kids Hospital - Toronto	0	0	0	0	0	0	0	0	0	0	0	0	0	0	0	0	0	0	0	0	0	0
Sunnybrook & Women's College HSC	0	0	0	0	0	0	0	0	0	0	0	0	0	0	0	0	0	0	0	0	0	0
P.H.O.L. - Sault Ste. Marie	0	0	0	0	0	0	0	0	0	0	0	0	0	0	0	0	0	0	0	0	0	0
P.H.O.L. - Timmins	1	0	0	0	0	0	1	0	1	0	0	0	0	0	1	0	1	0	1	0	1	0
St. Joseph's - London	21	0	0	0	0	0	21	0	21	0	0	0	0	0	21	0	21	0	21	1	21	0
P.H.O.L. - London	13	0	0	0	0	0	13	0	13	0	0	0	0	0	13	0	13	0	13	0	13	0
P.H.O.L. - Orillia	3	0	0	0	0	0	3	0	3	0	0	0	0	0	3	0	3	0	3	0	3	0
P.H.O.L. - Thunder Bay	9	0	0	0	0	0	9	0	9	0	0	0	0	0	9	0	9	0	9	1	9	0
P.H.O.L. - Sudbury	6	0	0	0	0	0	6	0	6	0	0	0	0	0	6	0	6	0	6	0	6	0
P.H.O.L. - Hamilton	12	0	0	0	0	0	12	0	12	0	0	0	0	0	12	0	12	0	12	0	12	0
P.H.O.L. - Peterborough	5	0	0	0	0	0	5	0	5	0	0	0	0	0	5	0	5	0	5	0	5	0
St. Joseph's - Hamilton	80	0	0	0	0	0	80	0	80	0	0	0	0	0	80	0	80	0	80	2	0	0
Province of Ontario	390	0	0	0	0	0	387	1	277	0	0	0	0	0	264	0	277	0	264	7	184	2
Province of Manitoba	416	0	0	0	0	0	416	1	75	0	0	0	0	0	75	0	72	0	75	16	72	0
Regina	36	0	0	0	0	0	36	0	37	0	0	0	0	0	37	0	37	0	37	9	37	0
Saskatoon	0	0	0	0	0	0	0	0	0	0	0	0	0	0	0	0	0	0	0	0	0	0
Province of Saskatchewan	36	0	0	0	0	0	36	0	37	0	0	0	0	0	37	0	37	0	37	9	37	0
Province of Alberta	1807	0	0	0	0	0	1806	0	1806	0	0	0	0	0	1806	2	1806	0	1806	96	1806	0
Prairies	2259	0	0	0	0	0	2258	1	1918	0	0	0	0	0	1918	2	1915	0	1918	121	1915	0
British Columbia	806	0	0	0	0	0	806	0	243	0	0	0	0	0	243	0	243	0	231	34	231	0
Yukon	127	0	0	0	0	0	127	0	N.A.	N.A.	N.A.	N.A.	N.A.	N.A.	N.A.	N.A.	N.A.	N.A.	N.A.	N.A.	N.A.	N.A.
Northwest Territories	2	0	0	0	0	0	2	0	2	0	0	0	0	0	2	0	2	0	2	0	2	0
Nunavut	68	0	0	0	0	0	68	0	68	0	0	0	0	0	68	3	68	0	68	16	1	0
Territories	197	0	0	0	0	0	197	0	70	0	0	0	0	0	70	3	70	0	70	16	3	0
CANADA	3971	0	0	0	0	0	3977	4	2799	0	0	0	0	5	2786	6	2795	0	2670	185	2455	4

Specimens from Yukon (YT), Northwest Territories (NT) and Nunavut (NU) are sent to reference laboratories in other provinces and reported results reflect specimens identified as originating from YT, NT or NU.

Results from British Columbia comprise of specimens from the following sites: BC Children's and Women's Hospital, Children's and Women's Hospital Laboratory, Fraser Health Medical Microbiology Laboratory, Island Health, Providence Health Care, Powell River Hospital, St. Paul's Hospital, Vancouver General Hospital, Victoria General Hospital, Victoria Coastal Health, BCCDC Public Health Laboratory, Interior Health Authority sites and Northern Health Authority sites.

Delays in the reporting of data may cause data to change retrospectively.

For BC, only data from subtyped influenza A specimens are included in the weekly number of influenza detections and so the sum of A(H1N1)pdm09, A(H3), and A(UnS) positive results may not equal the sum of total Flu A positive results.

Table 2: Respiratory Virus Detections/Isolations for the period August 31, 2019 - August 22, 2020 (Reporting Weeks 201935-202034)

Reporting Laboratory	Flu Tested	A(H1N1)pdm09 Positive	A(H3) Positive	A(UnS) Positive	Total Flu A Positive	Total Flu B Positive	RSV Tested	RSV Positive	PIV Tested	PIV 1 Positive	PIV 2 Positive	PIV 3 Positive	PIV 4 Positive	Other PIV Positive	Adeno Tested	Adeno Positive	hMPV Tested	hMPV Positive	Entero/Rhino Tested	Entero/Rhino Positive	Coron Tested	Coron Positive
Newfoundland	20073	8	33	167	208	514	20073	339	20073	149	2	13	0	0	20073	126	20073	190	20073	402	N.A.	N.A.
Prince Edward Island	1274	0	0	144	144	78	1274	146	53	1	0	0	1	0	53	0	51	0	53	16	53	2
Nova Scotia	6733	3	2	196	201	248	6837	625	702	13	1	3	5	5	736	12	736	11	736	77	749	14
New Brunswick	12018	61	29	957	1047	1292	11956	1077	2549	53	7	0	13	0	2549	64	2549	16	2549	296	10285	136
Atlantic	40098	72	64	1464	1600	2132	40140	2187	23377	216	10	16	19	5	23411	202	23409	217	23411	791	11087	152
Région Nord-Est	9321	0	0	1136	1136	1323	7994	645	0	0	0	0	0	0	0	0	0	0	N.A.	N.A.	0	0
Québec-Chaudière-Appalaches	14105	0	0	1900	1900	1829	14035	1318	2845	31	4	3	14	0	2892	81	2286	25	N.A.	N.A.	2226	35
Centre-du-Québec	19055	0	0	2909	2909	2395	15349	1385	77	0	0	1	0	0	77	0	77	0	N.A.	N.A.	77	1
Montréal-Laval	38902	0	0	4023	4023	2411	37750	2400	17579	146	5	35	13	0	17579	526	17112	271	N.A.	N.A.	17422	269
Ouest du Québec	12619	0	0	1745	1745	1278	11771	1089	0	0	0	0	0	0	0	0	0	0	N.A.	N.A.	0	0
Montérégie	8523	0	0	1133	1133	791	8295	610	0	0	0	0	0	0	0	0	0	0	N.A.	N.A.	0	0
Province of Québec	102525	0	0	12846	12846	10027	95194	7447	20501	177	9	39	27	0	20548	607	19475	296	N.A.	N.A.	19725	305
P.H.O.L. - Ottawa	1943	108	61	3	172	71	1934	86	1909	2	0	0	0	41	1909	18	1895	61	1753	78	1738	68
CHEO - Ottawa	10568	2	0	667	669	474	10568	695	1147	17	0	5	10	5	1147	20	1147	20	1150	181	1138	32
P.H.O.L. - Kingston	1637	62	27	4	93	23	1612	68	1608	1	0	0	0	33	1608	17	1599	60	1439	64	1426	64
UHN / Mount Sinai Hospital	12292	9	0	651	660	218	12292	348	733	7	2	10	2	0	0	0	804	16	0	0	N.A.	N.A.
P.H.O.L. - Toronto	19120	1349	144	36	1529	355	18656	416	18577	34	0	3	0	240	18577	159	18357	440	16033	814	15793	741
Sick Kids Hospital - Toronto	2407	104	13	99	216	168	1936	208	1936	26	5	8	27	0	1936	53	1936	48	1936	366	1936	92
Sunnybrook & Women's College HSC	3456	0	0	124	124	25	3456	64	3456	9	0	17	0	0	3197	11	3316	35	3316	66	120	0
P.H.O.L. - Sault Ste. Marie	635	20	0	0	20	8	610	28	611	1	0	0	0	25	611	5	608	33	560	14	557	13
P.H.O.L. - Timmins	702	65	3	2	70	12	670	32	673	0	0	0	0	18	673	1	670	30	645	5	640	19
St. Joseph's - London	4827	0	0	238	238	114	4825	334	1791	19	4	3	14	0	1791	25	1791	33	1012	114	934	22
P.H.O.L. - London	5543	309	112	9	430	145	5508	250	5494	8	0	0	0	90	5496	49	5452	180	5038	298	4984	259
P.H.O.L. - Orillia	1715	81	31	3	115	33	1712	89	1709	4	0	0	0	33	1709	8	1704	50	1518	81	1511	90
P.H.O.L. - Thunder Bay	1530	82	17	9	108	45	1528	64	1528	0	0	1	0	41	1528	22	1517	52	1480	121	1468	44
P.H.O.L. - Sudbury	957	29	14	4	47	15	951	45	952	0	0	1	0	21	952	9	942	14	880	28	869	34
P.H.O.L. - Hamilton	5292	286	39	12	337	117	5142	164	5123	10	1	0	0	120	5123	69	5102	139	4528	339	4503	256
P.H.O.L. - Peterborough	1308	66	4	1	71	10	1299	33	1298	3	0	0	0	40	1297	10	1292	47	1043	77	1035	49
St. Joseph's - Hamilton	33564	0	0	1617	1617	806	33564	1275	33564	119	6	26	0	0	33564	276	33564	462	33564	1297	0	0
Province of Ontario	107496	2572	465	3479	6516	2639	106263	4199	82109	260	18	74	53	707	81118	752	81696	1720	75895	3943	38652	1783
Manitoba	25979	174	134	1340	1648	889	25641	1011	4703	48	9	4	8	0	4703	61	3517	59	4703	563	3084	79
Regina	14336	43	26	1195	1264	665	14345	1043	6452	149	16	6	32	0	6452	104	6375	205	6452	928	6452	151
Saskatoon	4455	0	0	318	318	235	4455	182	4519	98	12	6	7	0	4519	66	4522	27	4519	530	4519	45
Province of Saskatchewan	18791	43	26	1513	1582	900	18800	1225	10971	247	28	12	39	0	10971	170	10897	232	10971	1458	10971	196
Province of Alberta	122818	1742	1287	1346	4375	3417	115356	0	115356	497	112	99	274	0	115356	940	115356	1631	115356	7266	115356	1748
Prairies	167588	1959	1447	4199	7605	5206	159797	2236	131030	792	149	115	321	0	131030	1171	129770	1922	131030	9287	129411	2023
British Columbia	94142	277	244	1852	4091	2575	93782	2771	27699	185	60	38	52	86	27825	173	27638	692	26896	1924	10262	317
Yukon	9981	4	8	55	73	45	9981	23	N.A.	N.A.	N.A.	N.A.	N.A.	N.A.	N.A.	N.A.	N.A.	N.A.	N.A.	N.A.	N.A.	N.A.
Northwest Territories	1651	90	19	1	110	191	1640	0	1640	14	2	13	13	0	1640	22	1640	90	1640	204	1640	77
Nunavut	1942	5	14	42	61	73	1939	53	1939	36	4	1	6	0	1939	39	1939	87	1939	325	392	41
Territories	13574	99	41	98	244	309	13560	76	3579	50	6	14	19	0	3579	61	3579	177	3579	529	2032	118
CANADA	525423	4979	2261	23938	32902	22888	508736	18916	288295	1680	252	296	491	798	287511	2966	285567	5024	260811	16474	211169	4698

Specimens from YT, NT and NU are sent to reference laboratories in other provinces and reported results reflect specimens identified as originating from YT, NT or NU.

Results from British Columbia comprise of specimens from the following sites: BC Children's and Women's Hospital, Children's and Women's Hospital Laboratory, Fraser Health Medical Microbiology Laboratory, Island Health, Providence Health Care, Powell River Hospital, St. Paul's Hospital, Vancouver General Hospital, Victoria General Hospital, Victoria Coastal Health, BCCDC P

Delays in the reporting of data may cause data to change retrospectively. Due to reporting delays, the sum of weekly report totals do not add up to cumulative totals.

For BC, only data from subtyped influenza A specimens are included in the weekly number of influenza detections and so the sum of A(H1N1)pdm09, A(H3), and A(UnS) positive results may not equal the sum of total Flu A positive results.

Figure 1: Number positive laboratory tests for other respiratory viruses by report week, Canada, 2019-20

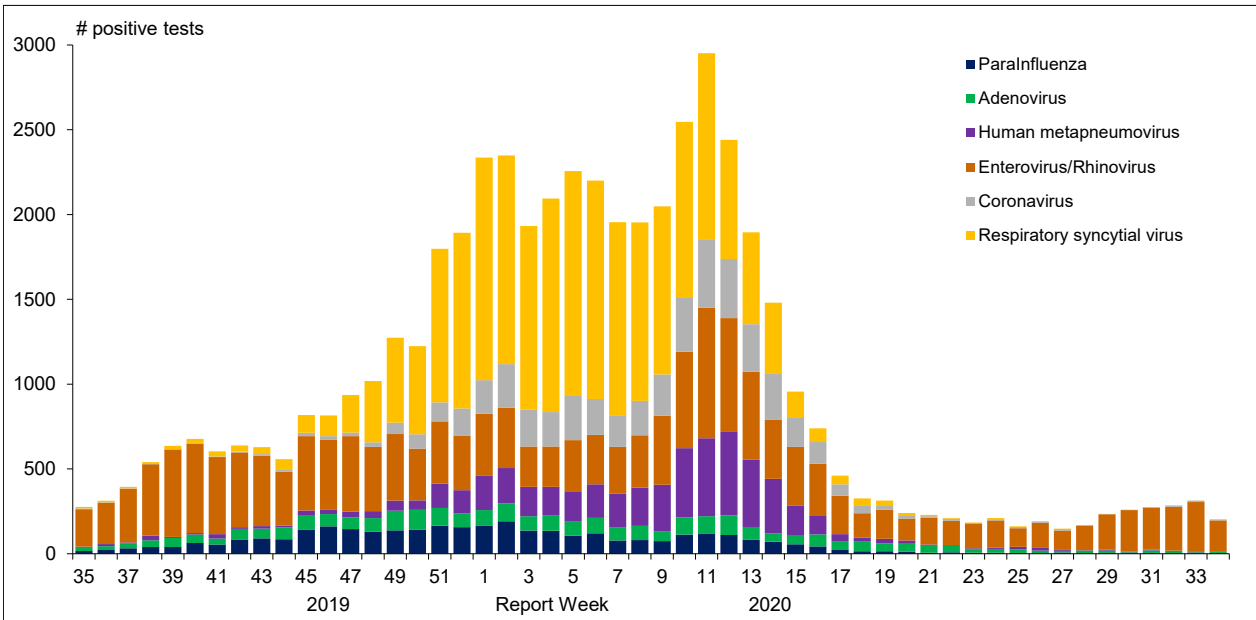


Figure 2 : Positive Influenza Tests (%) in Canada by Region by Week of Report

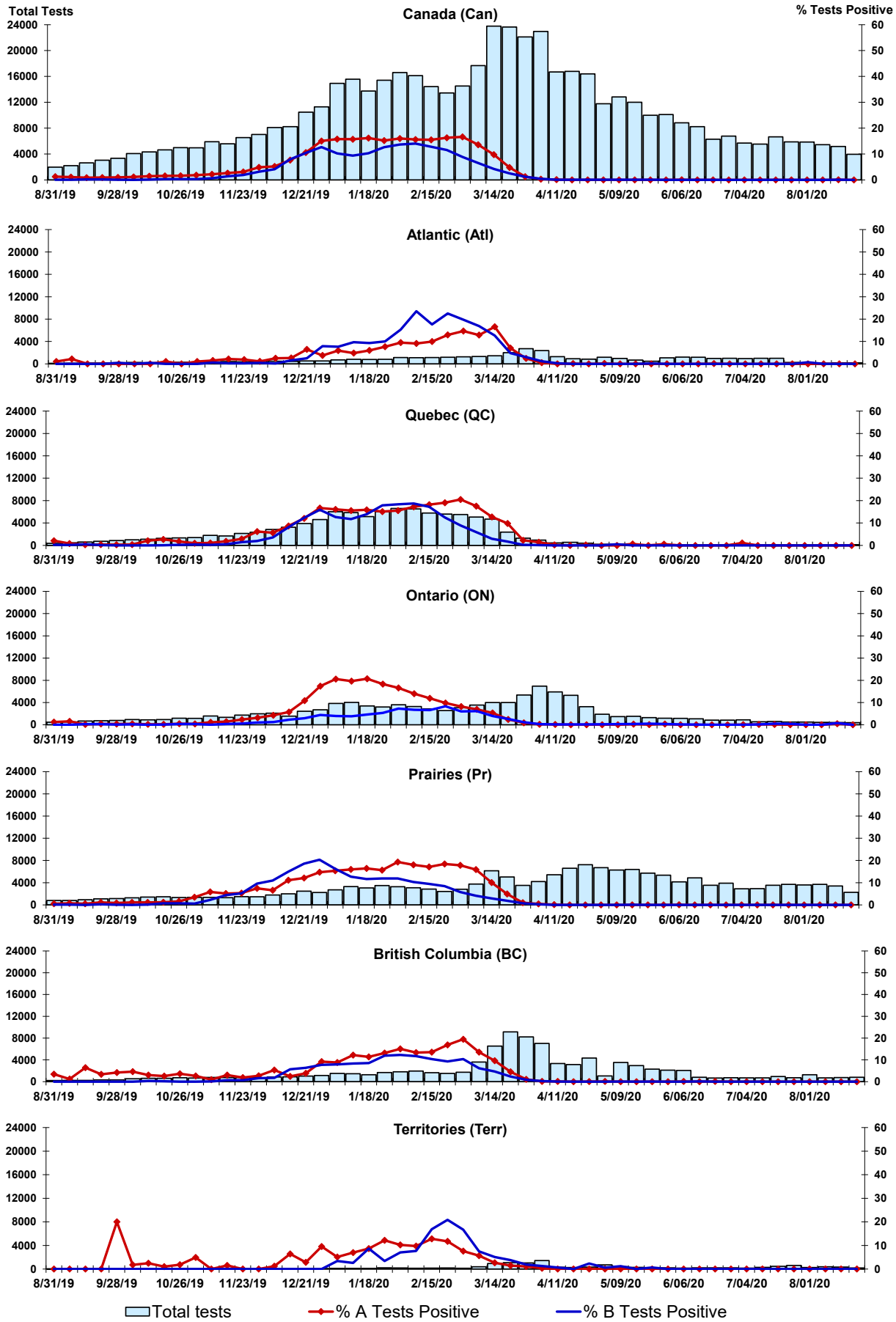


Figure 3: Positive Respiratory syncytial virus (RSV) Tests (%) in Canada by Region by Week of Report

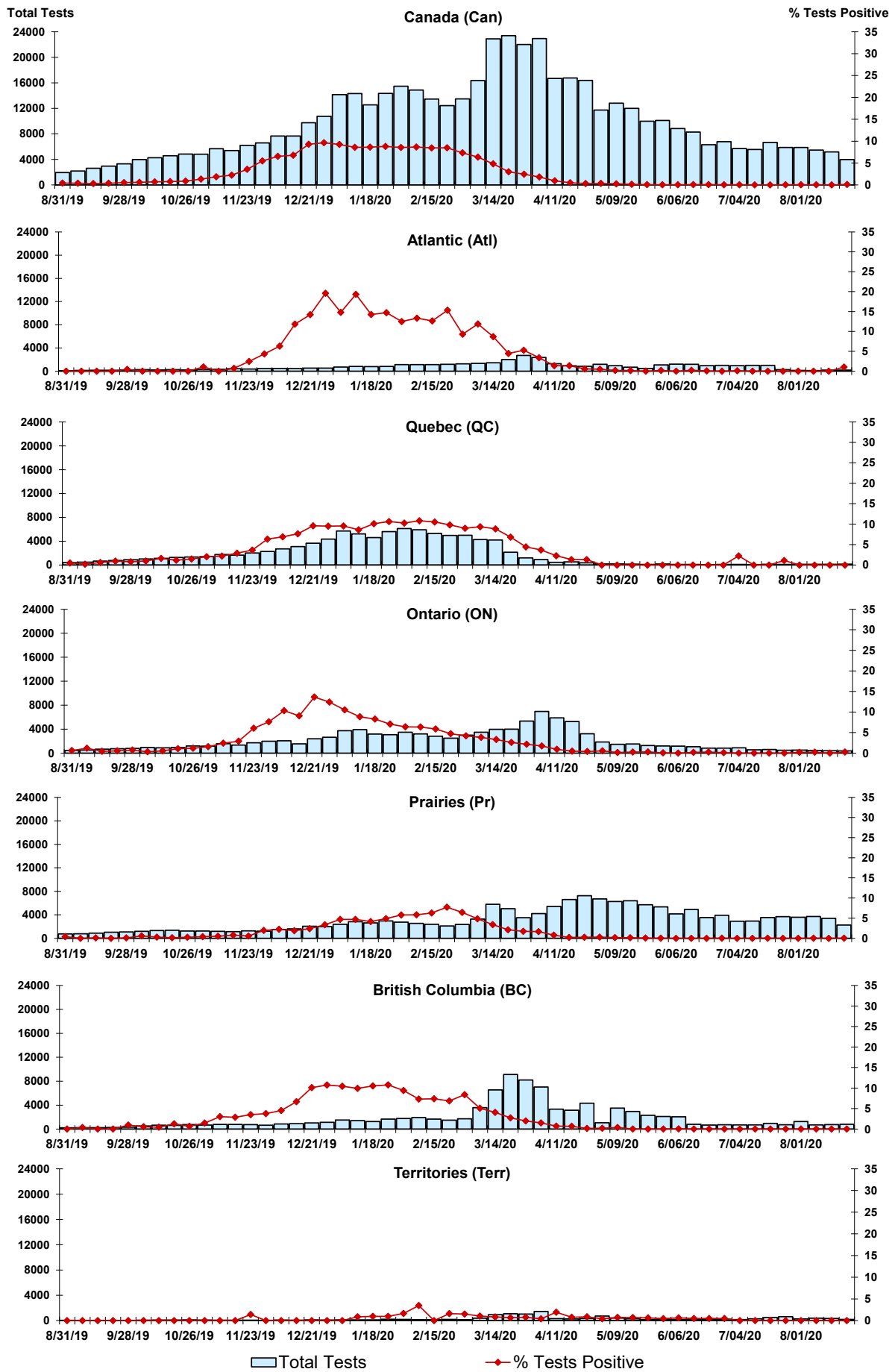


Figure 4: Positive Parainfluenza (PIV) Tests (%) in Canada by Region by Week of Report

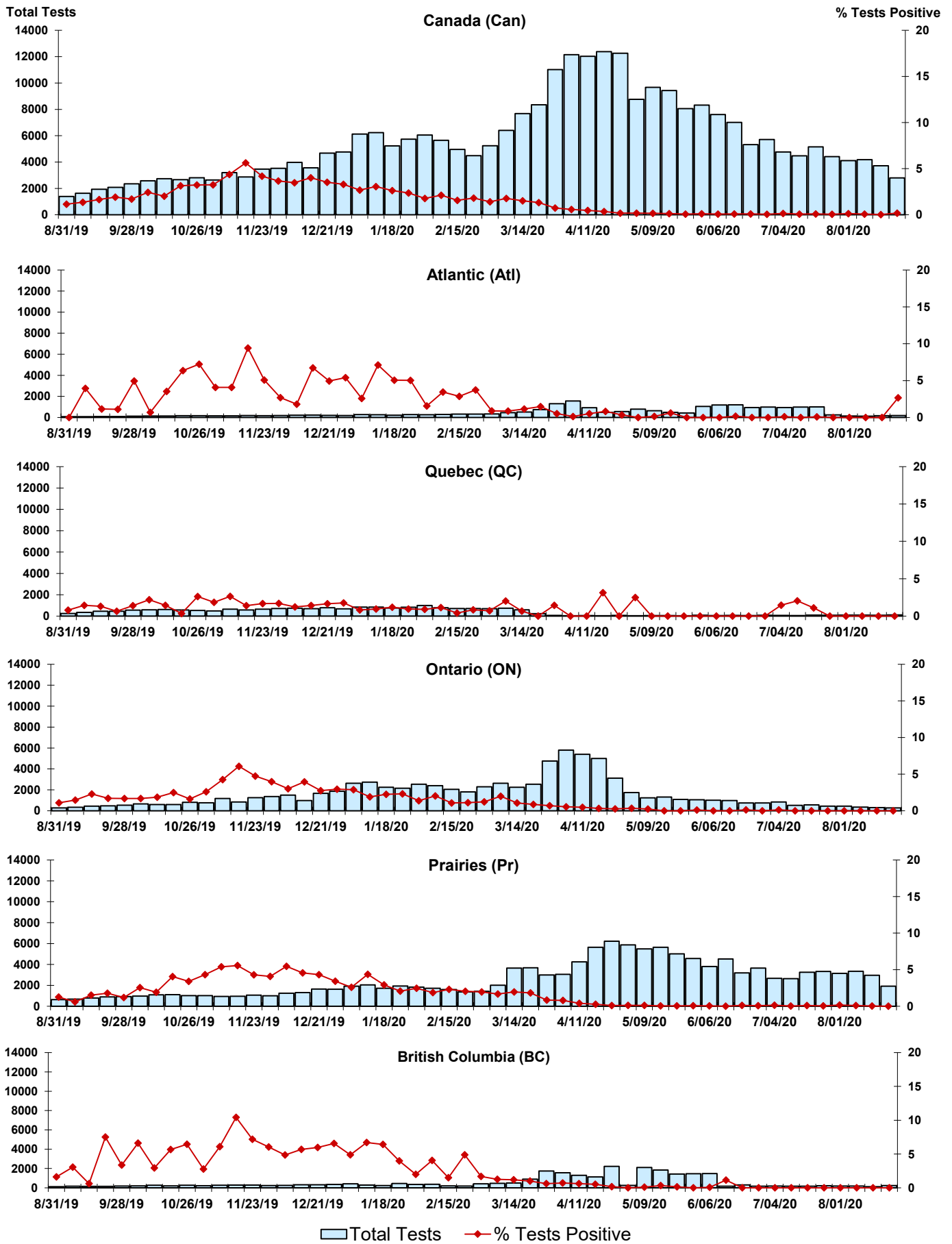


Figure 5: Positive Adenovirus (adeno) Tests (%) in Canada by Region by Week of Report

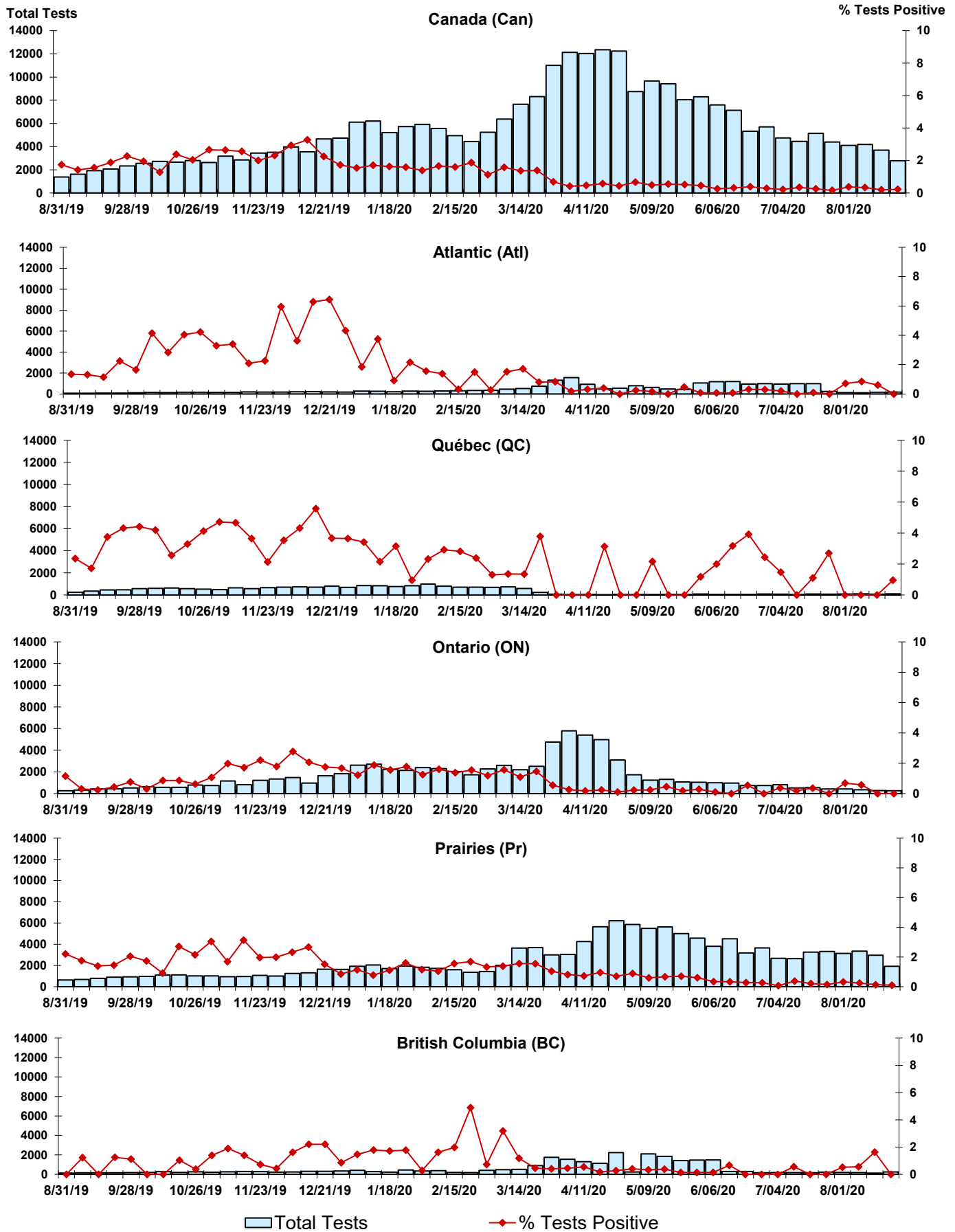


Figure 6: Positive human metapneumovirus (hMPV) Tests (%) in Canada by Region by Week of Report

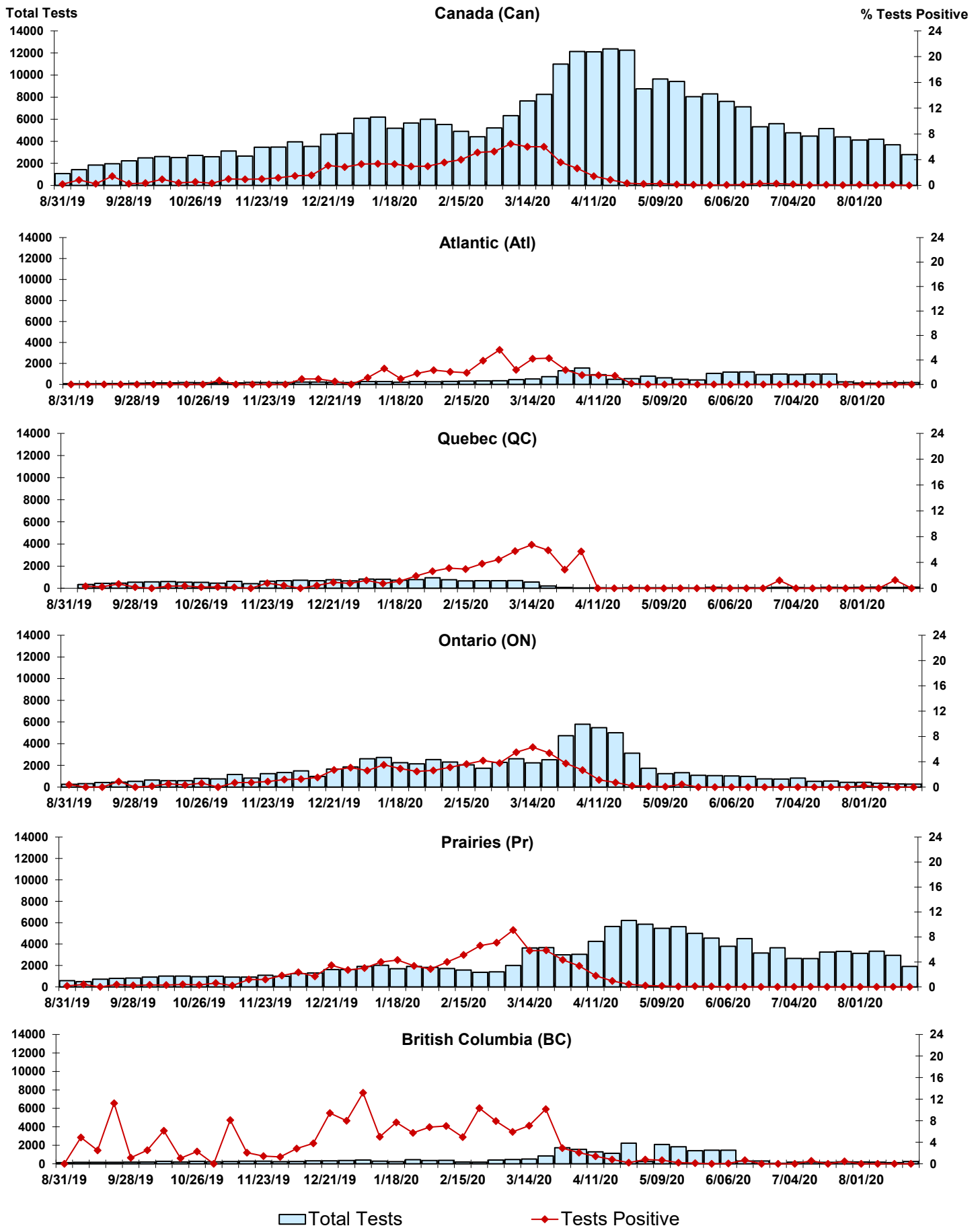


Figure 7: Positive Enterovirus/Rhinovirus (entero/rhino) Tests (%) in Canada by Region by Week of Report

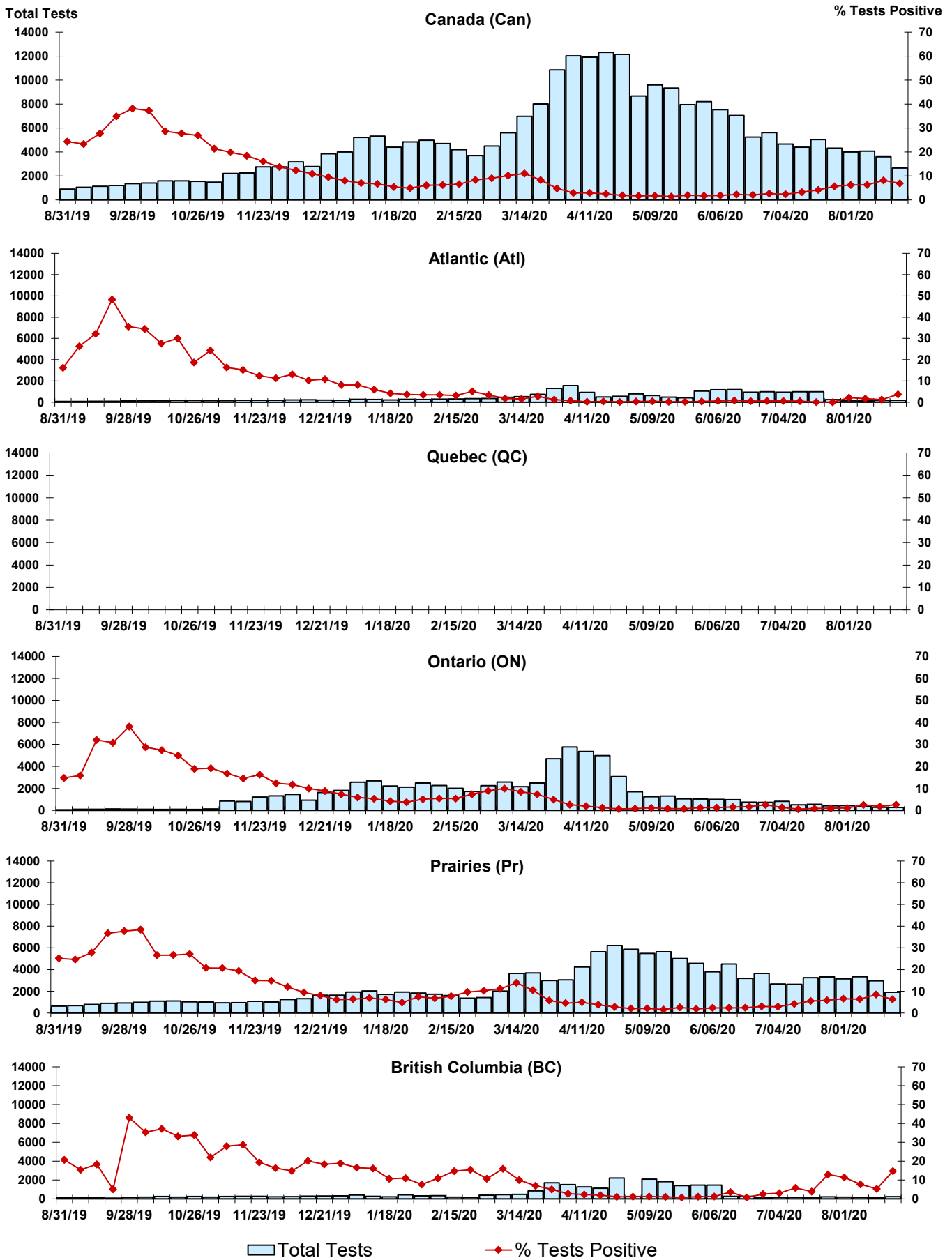
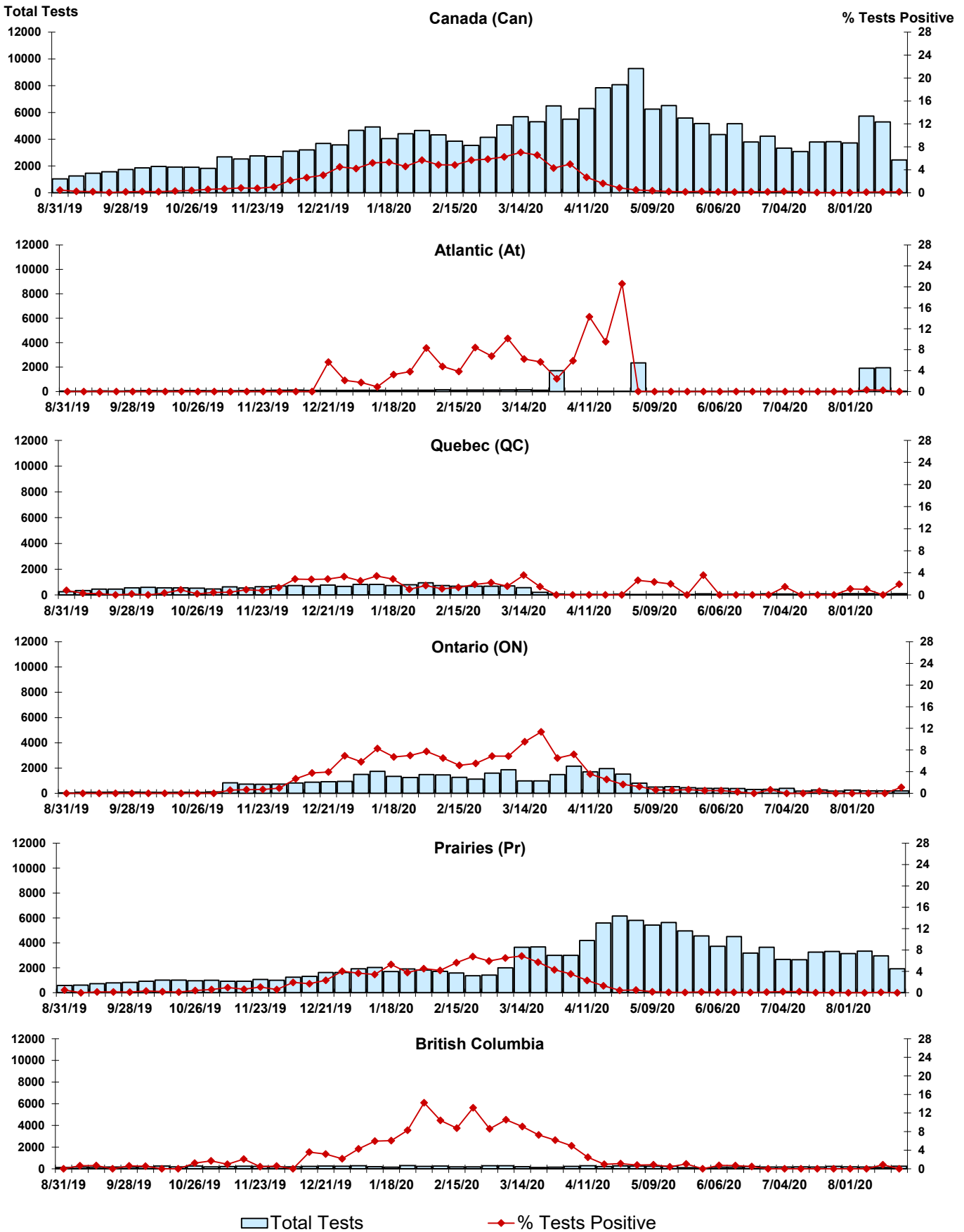


Figure 8: Positive Coronavirus (coron) Tests (%) in Canada by Region by Week of Report



Abbreviations:

A(H1N1)pdm09: Influenza A(H1N1)pdm09

A(H3): Influenza A(H3N2)

A (UnS): Influenza A (Unsubtyped)

Adeno: Adenovirus

CHEO: Children's Hospital of Eastern Ontario

Coron: Coronavirus

Entero: Enterovirus

hMPV: human metapneumovirus

HSC: Health Sciences Centre

N.A.: Not Applicable

P.H.L.: Public Health Laboratory

P.H.O.L.: Public Health Ontario Laboratory

PIV: Parainfluenza

Rhino: Rhinovirus

RSV: Respiratory syncytial virus

UHN: University Health Network

Notes:

Specimens from Yukon (YT), Northwest Territories (NT) and Nunavut (NU) are sent to reference laboratories in other provinces. Results reported for the Territories reflect the number of specimens that are identified as originating from YT, NT or NU.

Delays in the reporting of data may cause data to change retrospectively.

Due to reporting delays, the sum of weekly report totals do not add up to cumulative totals.

