

Respiratory Virus Report, Week 44 - ending October 31, 2020

The Respiratory Virus Detection Surveillance System collects data from select laboratories across Canada on the number of tests performed and the number of tests positive for influenza and other respiratory viruses. Data are reported on a weekly basis year-round to the Centre for Immunization and Respiratory Infectious Diseases (CIRID), Public Health Agency of Canada. These data are also summarized in the weekly FluWatch report.

In this Respiratory Virus Report, the number of detections of coronavirus reflects only seasonal human coronaviruses, not the novel pandemic coronavirus (SARS-CoV2) that causes COVID-19. For information on COVID-19, see the [Coronavirus disease \(COVID-19\): Outbreak](#)

Table 1: Respiratory Virus Detections/Isolations for the week ending October 31, 2020 (Reporting Week 202044)

Reporting Laboratory	Flu Tested	A(H1N1)pdm09 Positive	A(H3) Positive	A(UnS) Positive	Total Flu A Positive	Total Flu B Positive	RSV Tested	RSV Positive	PIV Tested	PIV 1 Positive	PIV 2 Positive	PIV 3 Positive	PIV 4 Positive	Other PIV Positive	Adeno Tested	Adeno Positive	hMPV Tested	hMPV Positive	Entero/Rhino Tested	Entero/Rhino Positive	Coron Tested	Coron Positive
Newfoundland	180	0	0	0	0	0	180	0	180	0	0	0	0	0	180	2	180	1	180	38	N.A.	N.A.
Prince Edward Island	10	0	0	0	0	0	10	0	10	0	0	0	0	0	10	0	10	0	10	3	10	0
Nova Scotia	36	0	0	0	0	0	37	0	31	0	0	0	0	0	31	0	31	0	31	3	31	0
New Brunswick	48	0	0	0	0	0	48	0	20	0	0	0	0	0	20	0	20	0	20	8	20	0
Atlantic	274	0	0	0	0	0	275	0	241	0	0	0	0	0	241	2	241	1	241	52	61	0
Région Nord-Est	50	0	0	0	0	0	34	0	0	0	0	0	0	0	0	0	0	0	N.A.	N.A.	0	0
Québec-Chaudière-Appalaches	21	0	0	0	0	0	21	0	17	0	0	0	0	0	17	2	17	0	N.A.	N.A.	0	0
Centre-du-Québec	20	0	0	0	0	0	22	0	12	0	0	0	0	0	12	1	12	0	N.A.	N.A.	12	0
Montréal-Laval	154	0	0	0	0	0	151	0	112	0	0	0	0	0	112	2	110	0	N.A.	N.A.	110	0
Ouest du Québec	27	0	0	0	0	0	24	0	0	0	0	0	0	0	0	0	0	0	N.A.	N.A.	0	0
Montérégie	0	0	0	0	0	0	0	0	0	0	0	0	0	0	0	0	0	0	N.A.	N.A.	0	0
Province of Québec	272	0	0	0	0	0	252	0	141	0	0	0	0	0	141	5	139	0	N.A.	N.A.	122	0
P.H.O.L. - Ottawa	18	0	0	0	0	0	18	0	18	0	0	0	0	0	18	0	18	0	18	1	18	0
CHEO - Ottawa	124	0	0	0	0	0	124	0	19	0	0	0	0	0	19	0	19	0	19	3	19	0
P.H.O.L. - Kingston	22	0	0	0	0	0	22	0	22	0	0	0	0	0	22	0	22	0	22	1	22	0
UHN / Mount Sinai Hospital	21	0	0	0	0	0	21	0	21	0	0	0	0	0	0	0	21	1	0	0	0	0
P.H.O.L. - Toronto	225	0	0	0	0	0	223	0	223	0	0	0	0	0	223	0	223	0	223	11	223	0
Sick Kids Hospital - Toronto	0	0	0	0	0	0	0	0	0	0	0	0	0	0	0	0	0	0	0	0	0	0
Sunnybrook & Women's College HSC	0	0	0	0	0	0	0	0	0	0	0	0	0	0	0	0	0	0	0	0	0	0
P.H.O.L. - Sault Ste. Marie	9	0	0	0	0	0	9	0	9	0	0	0	0	0	9	0	9	0	9	0	9	0
P.H.O.L. - Timmins	11	0	0	0	0	0	11	0	11	0	0	0	0	0	11	0	11	0	11	6	11	0
St. Joseph's - London	0	0	0	0	0	0	0	0	0	0	0	0	0	0	0	0	0	0	0	0	0	0
P.H.O.L. - London	59	0	0	0	0	0	59	0	59	0	0	0	0	0	59	2	59	0	59	10	59	0
P.H.O.L. - Orillia	9	0	0	0	0	0	9	0	9	0	0	0	0	0	9	0	9	0	9	2	9	0
P.H.O.L. - Thunder Bay	8	0	0	0	0	0	8	0	8	0	0	0	0	0	8	0	8	0	8	3	8	0
P.H.O.L. - Sudbury	6	0	0	0	0	0	6	0	6	0	0	0	0	0	6	0	6	0	6	1	6	0
P.H.O.L. - Hamilton	60	0	0	0	0	0	60	0	60	0	0	0	0	0	60	0	60	0	60	11	60	0
P.H.O.L. - Peterborough	36	0	0	0	0	0	36	0	36	0	0	0	0	0	36	0	36	0	36	5	36	0
St. Joseph's - Hamilton	179	0	0	0	0	0	179	0	179	0	0	0	0	0	179	0	179	0	179	15	0	0
Province of Ontario	787	0	0	0	0	0	785	0	680	0	0	0	0	0	659	2	680	1	659	69	480	0
Province of Manitoba	1163	0	0	0	0	0	1163	3	104	0	0	0	0	0	104	1	97	0	104	10	97	0
Province of Saskatchewan	72	0	0	0	0	0	72	0	49	0	0	0	0	0	49	1	49	0	49	8	49	0
Province of Alberta	4393	0	0	0	0	0	4393	0	4393	0	1	0	0	0	4393	2	4393	2	4393	362	4393	0
Prairies	5628	0	0	0	0	0	5628	3	4546	0	1	0	0	0	4546	4	4539	2	4546	380	4539	0
British Columbia	1809	0	0	1	2	1	1809	0	589	0	1	0	0	0	589	0	589	4	572	32	190	0
Yukon	206	0	0	2	2	2	206	2	N.A.	N.A.	N.A.	N.A.	N.A.	N.A.	N.A.	N.A.	N.A.	N.A.	N.A.	N.A.	N.A.	N.A.
Northwest Territories	13	0	0	0	0	0	13	0	13	0	0	0	0	0	13	0	13	0	13	5	13	0
Nunavut	44	0	0	0	0	0	44	0	44	0	0	0	0	0	44	1	44	0	44	19	3	0
Territories	263	0	0	2	2	2	263	2	57	0	0	0	0	0	57	1	57	0	57	24	16	0
CANADA	9033	0	0	3	4	3	9012	5	6254	0	2	0	0	0	6233	14	6245	8	6075	557	5408	0

Specimens from Yukon (YT), Northwest Territories (NT) and Nunavut (NU) are sent to reference laboratories in other provinces and reported results reflect specimens identified as originating from YT, NT or NU.

Results from British Columbia comprise of specimens from the following sites: BC Children's and Women's Hospital, Children's and Women's Hospital Laboratory, Fraser Health Medical Microbiology Laboratory, Island Health, Providence Health Care, Powell River Hospital, St. Paul's Hospital, Vancouver General Hospital, Victoria General Hospital, Victoria Coastal Health, BCCDC Public Health Laboratory, Interior Health Authority sites and Northern Health Authority sites.

Delays in the reporting of data may cause data to change retrospectively.

For BC, only data from subtyped influenza A specimens are included in the weekly number of influenza detections and so the sum of A(H1N1)pdm09, A(H3), and A(UnS) positive results may not equal the sum of total Flu A positive results.

Table 2: Respiratory Virus Detections/Isolations for the period August 23, 2020 - October 31, 2020 (Reporting Weeks 202035-202044)

Reporting Laboratory	Flu Tested	A(H1N1)pdm09 Positive	A(H3) Positive	A(UnS) Positive	Total Flu A Positive	Total Flu B Positive	RSV Tested	RSV Positive	PIV Tested	PIV 1 Positive	PIV 2 Positive	PIV 3 Positive	PIV 4 Positive	Other PIV Positive	Adeno Tested	Adeno Positive	hMPV Tested	hMPV Positive	Entero/Rhino Tested	Entero/Rhino Positive	Coron Tested	Coron Positive
Newfoundland	3088	0	0	0	0	0	3088	5	3088	0	0	0	0	0	3088	14	3088	1	3088	1127	N.A.	N.A.
Prince Edward Island	40	0	0	0	0	0	40	0	40	0	0	0	0	0	40	0	40	0	40	14	40	0
Nova Scotia	179	0	0	0	0	0	180	0	157	0	0	0	0	0	157	0	157	0	157	27	157	0
New Brunswick	262	0	0	0	0	0	262	0	161	0	0	0	0	0	152	3	152	0	152	24	107	0
Atlantic	3569	0	0	0	0	0	3570	5	3446	0	0	0	0	0	3437	17	3437	1	3437	1192	304	0
Région Nord-Est	257	0	0	0	0	1	207	0	0	0	0	0	0	0	0	0	0	0	N.A.	N.A.	0	0
Québec-Chaudière-Appalaches	181	0	0	0	0	0	211	0	156	0	0	0	0	0	158	7	153	0	N.A.	N.A.	136	0
Centre-du-Québec	99	0	0	0	0	0	104	0	62	0	0	0	0	0	60	2	62	0	N.A.	N.A.	62	0
Montréal-Laval	1313	0	0	0	0	1	1307	1	945	0	0	0	0	0	999	32	936	0	N.A.	N.A.	936	2
Ouest du Québec	170	0	0	0	0	0	158	0	0	0	0	0	0	0	0	0	0	0	N.A.	N.A.	0	0
Montérégie	0	0	0	0	0	0	0	0	0	0	0	0	0	0	0	0	0	0	N.A.	N.A.	0	0
Province of Québec	2020	0	0	0	0	2	1987	1	1163	0	0	0	0	0	1217	41	1151	0	N.A.	N.A.	1134	2
P.H.O.L. - Ottawa	105	0	0	0	0	0	105	0	105	0	0	0	0	0	105	0	105	0	105	5	105	0
CHEO - Ottawa	1006	0	0	1	1	1	603	3	181	0	0	0	0	0	181	1	181	0	181	22	181	0
P.H.O.L. - Kingston	230	0	0	0	0	0	230	0	230	0	0	0	0	0	230	2	227	0	230	75	227	0
UHN / Mount Sinai Hospital	81	0	0	0	0	0	81	0	154	0	1	1	1	0	0	0	114	3	20	3	40	0
P.H.O.L. - Toronto	1494	0	0	0	0	0	1492	1	1492	0	0	0	0	2	1493	5	1491	0	1492	77	1491	2
Sick Kids Hospital - Toronto	0	0	0	0	0	0	0	0	0	0	0	0	0	0	0	0	0	0	0	0	0	0
Sunnybrook & Women's College HSC	0	0	0	0	0	0	0	0	0	0	0	0	0	0	0	0	0	0	0	0	0	0
P.H.O.L. - Sault Ste. Marie	36	0	0	0	0	0	34	0	34	0	0	0	0	0	34	0	34	0	34	1	34	0
P.H.O.L. - Timmins	51	0	0	0	0	0	51	0	51	0	0	0	0	0	51	0	51	0	51	15	51	0
St. Joseph's - London	0	0	0	0	0	0	0	0	0	0	0	0	0	0	0	0	0	0	0	0	0	0
P.H.O.L. - London	393	0	0	0	0	0	389	0	389	0	0	0	0	2	389	2	385	0	389	47	385	0
P.H.O.L. - Orillia	67	0	0	0	0	0	65	0	65	0	0	0	0	0	65	0	65	0	65	7	65	0
P.H.O.L. - Thunder Bay	226	0	0	0	0	0	226	0	226	0	0	0	0	0	226	1	226	0	226	110	226	0
P.H.O.L. - Sudbury	83	0	0	0	0	0	83	0	83	0	0	0	0	0	83	0	83	0	83	8	83	0
P.H.O.L. - Hamilton	352	0	0	0	0	0	343	0	343	0	0	0	0	0	343	0	343	0	343	48	343	0
P.H.O.L. - Peterborough	180	0	0	1	1	0	147	0	147	0	0	0	0	0	147	0	147	0	147	13	147	0
St. Joseph's - Hamilton	764	0	0	0	0	0	764	0	764	0	0	0	0	0	764	1	764	0	764	103	0	0
Province of Ontario	5068	0	0	2	2	1	4613	4	4264	0	1	1	1	4	4111	12	4216	3	4130	534	3378	2
Manitoba	6398	0	0	0	0	0	6398	23	819	0	1	0	0	0	819	8	749	0	819	74	749	1
Province of Saskatchewan	660	0	0	0	0	0	660	1	534	0	0	0	0	0	534	5	534	0	534	86	534	0
Province of Alberta	32024	0	0	1	1	0	32015	0	32015	2	12	1	2	0	32015	51	32015	8	32015	3428	32015	6
Prairies	39082	0	0	1	1	0	39073	24	33368	2	13	1	2	0	33368	64	33298	8	33368	3588	33298	7
British Columbia	12993	0	0	1	2	1	12993	3	3044	0	1	0	1	0	3044	18	3044	17	2989	396	2337	0
Yukon	1901	0	0	2	2	2	1947	4	N.A.	N.A.	N.A.	N.A.	N.A.	N.A.	N.A.	N.A.	N.A.	N.A.	N.A.	N.A.	N.A.	N.A.
Northwest Territories	399	0	0	0	0	0	399	0	399	0	0	0	1	0	399	3	399	0	399	148	399	0
Nunavut	905	0	0	0	0	0	905	0	905	3	1	0	0	0	905	12	905	5	905	249	150	0
Territories	3205	0	0	2	2	2	3251	4	1304	3	1	0	1	0	1304	15	1304	5	1304	397	549	0
CANADA	65937	0	0	6	7	6	65487	41	46589	5	16	2	5	4	46481	167	46450	34	45228	6107	41000	11

Specimens from YT, NT and NU are sent to reference laboratories in other provinces and reported results reflect specimens identified as originating from YT, NT or NU.

Results from British Columbia comprise of specimens from the following sites: BC Children's and Women's Hospital, Children's and Women's Hospital Laboratory, Fraser Health Medical Microbiology Laboratory, Island Health, Providence Health Care, Powell River Hospital, St. Paul's Hospital, Vancouver General Hospital, Victoria General Hospital, Victoria Coastal Health, BCCDC Public Health Laboratory, Interior Health Authority sites and Northern Health Authority sites.

Delays in the reporting of data may cause data to change retrospectively. Due to reporting delays, the sum of weekly report totals do not add up to cumulative totals.

For BC, only data from subtyped influenza A specimens are included in the weekly number of influenza detections and so the sum of A(H1N1)pdm09, A(H3), and A(UnS) positive results may not equal the sum of total Flu A positive results.

Figure 1: Number positive laboratory tests for other respiratory viruses by report week, Canada, 2020-21

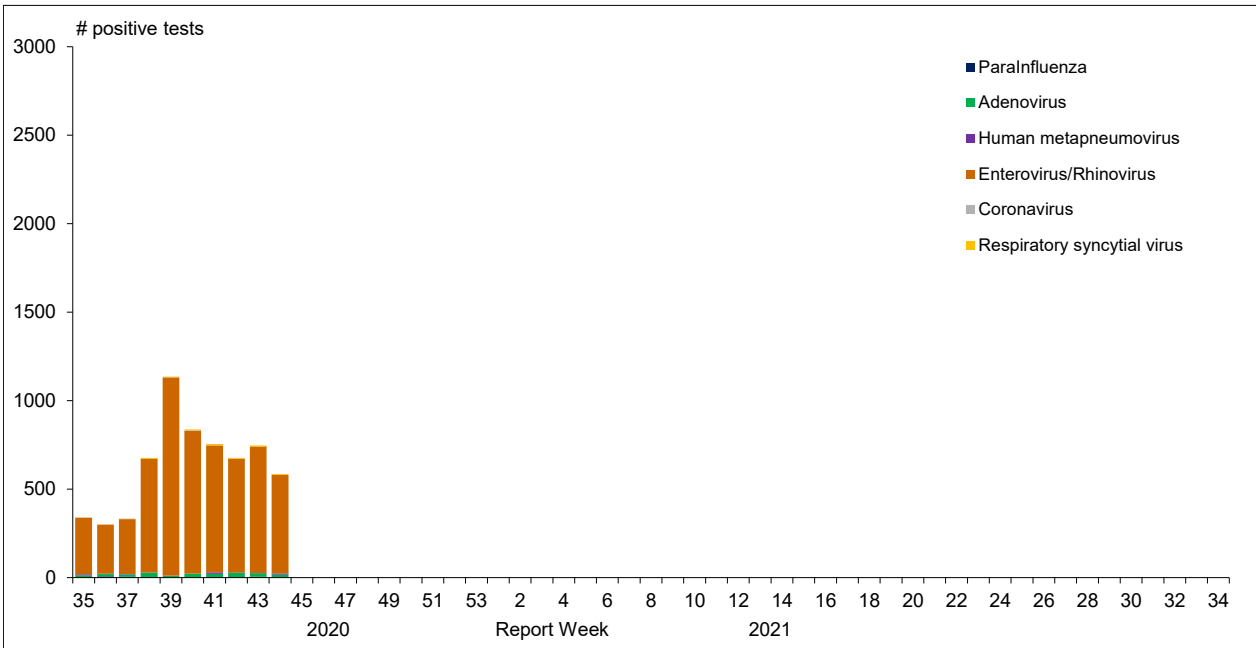


Figure 2 : Positive Influenza Tests (%) in Canada by Region by Week of Report

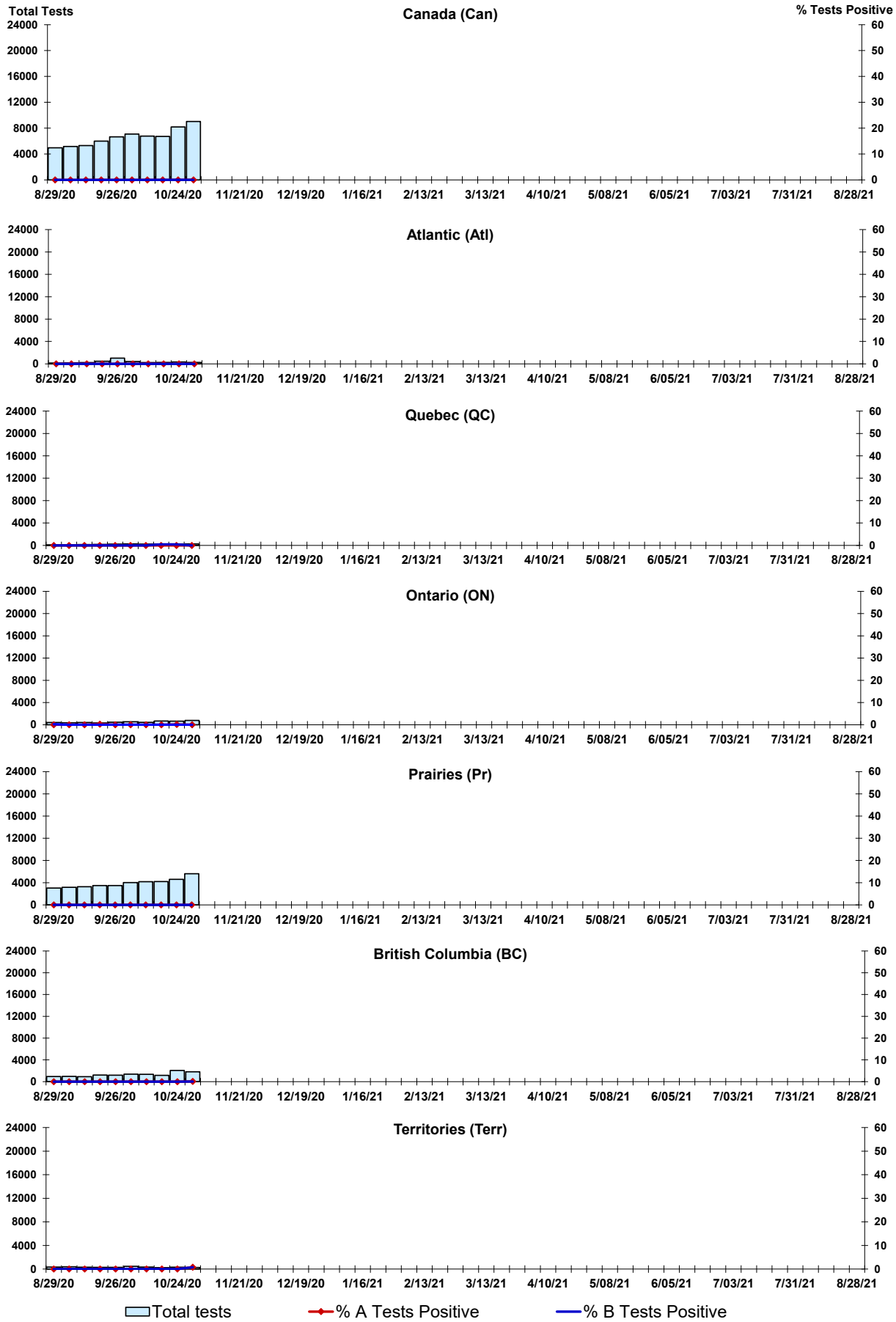


Figure 3: Positive Respiratory syncytial virus (RSV) Tests (%) in Canada by Region by Week of Report

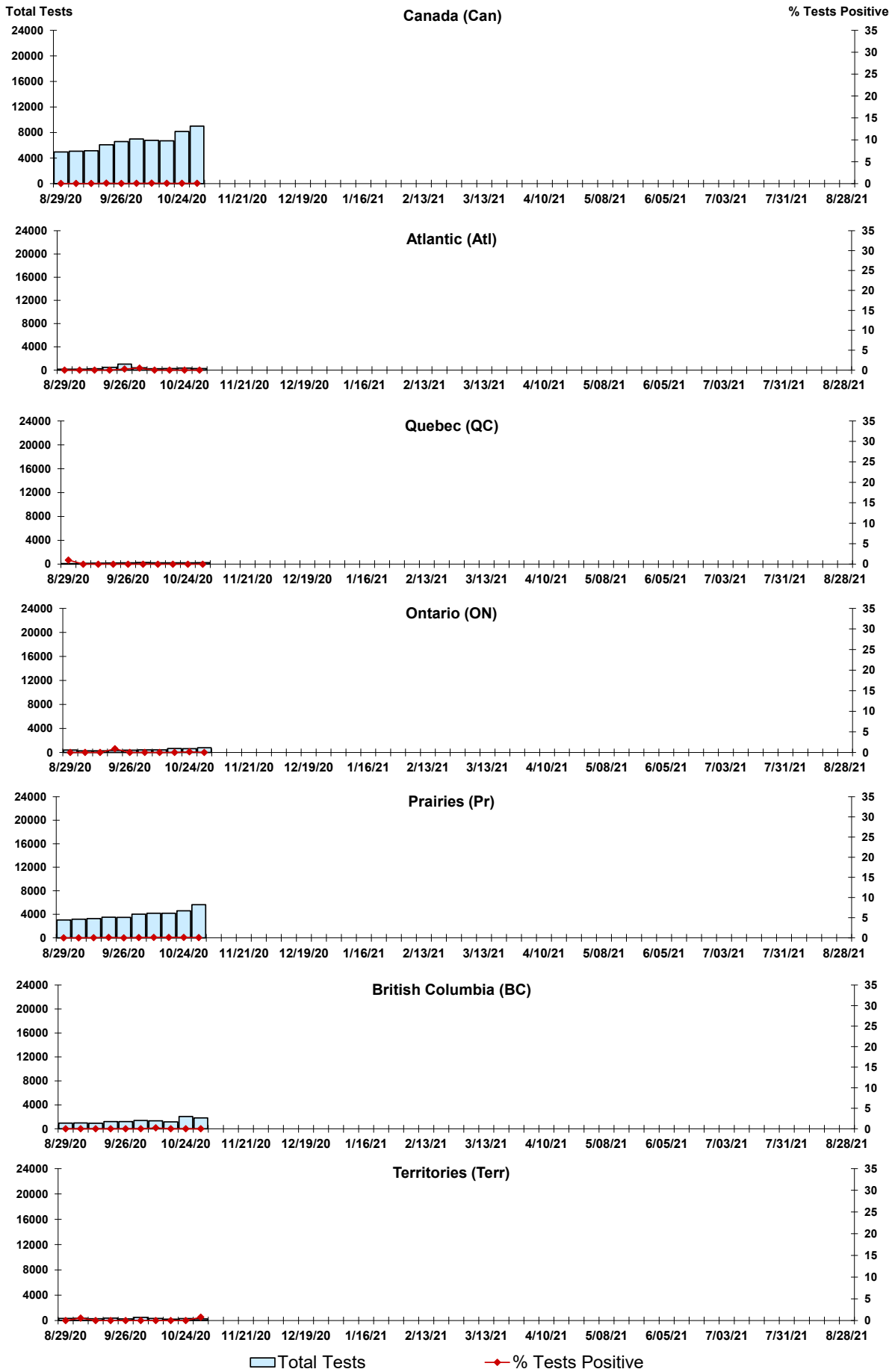
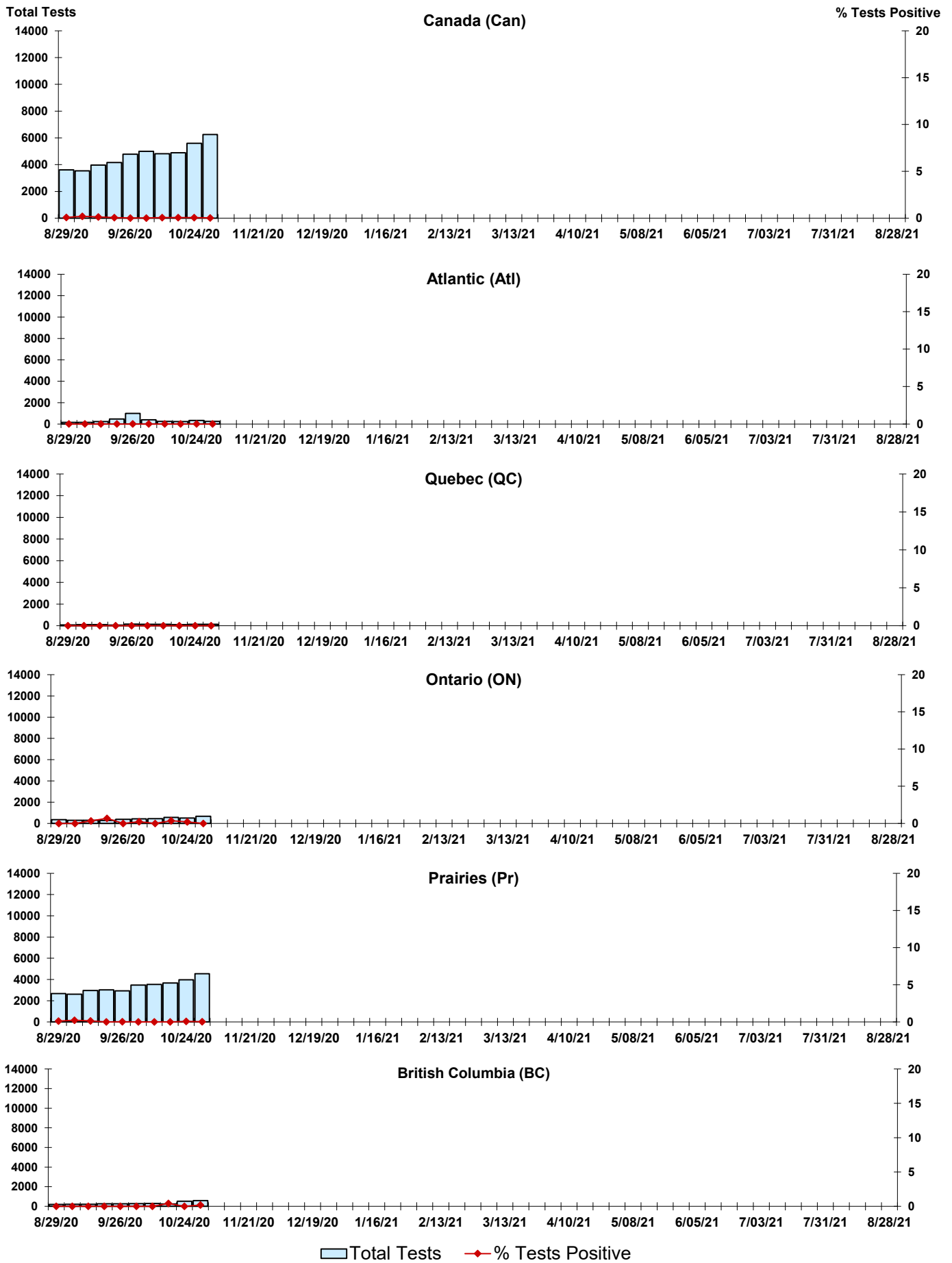


Figure 4: Positive Parainfluenza (PIV) Tests (%) in Canada by Region by Week of Report



Legend: Total Tests (light blue bar), % Tests Positive (red diamond)

Figure 5: Positive Adenovirus (adeno) Tests (%) in Canada by Region by Week of Report

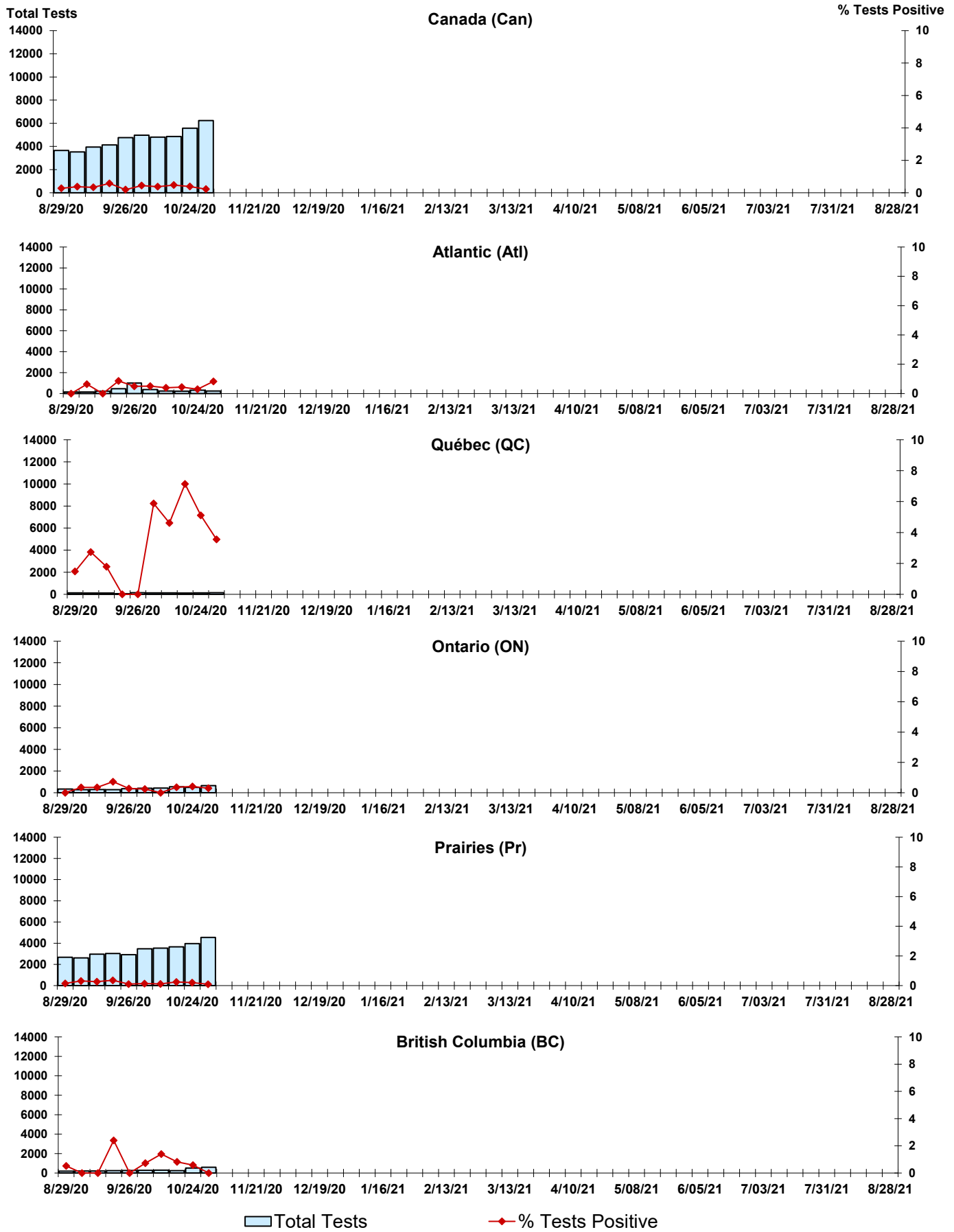


Figure 6: Positive human metapneumovirus (hMPV) Tests (%) in Canada by Region by Week of Report

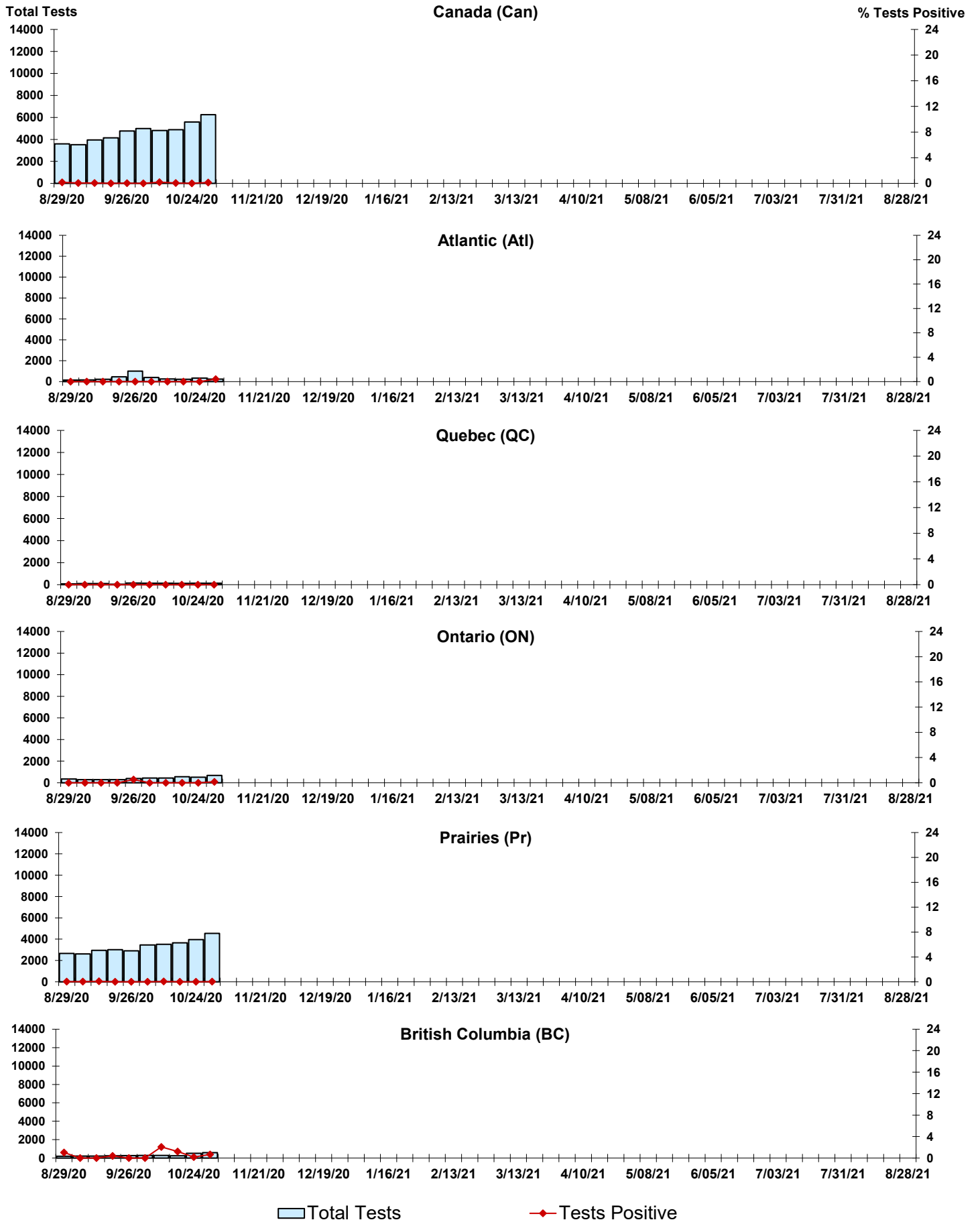


Figure 7: Positive Enterovirus/Rhinovirus (entero/rhino) Tests (%) in Canada by Region by Week of Report

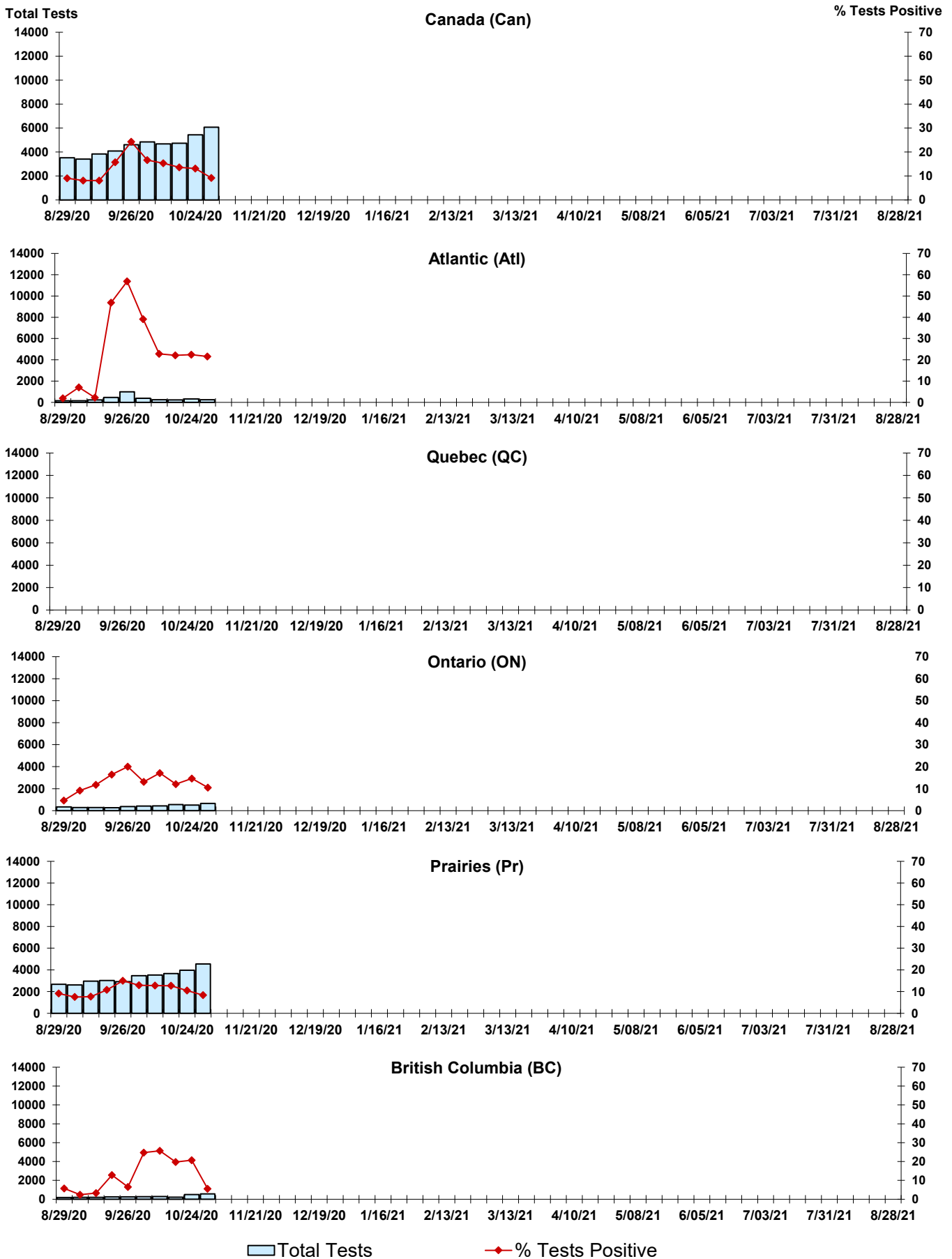
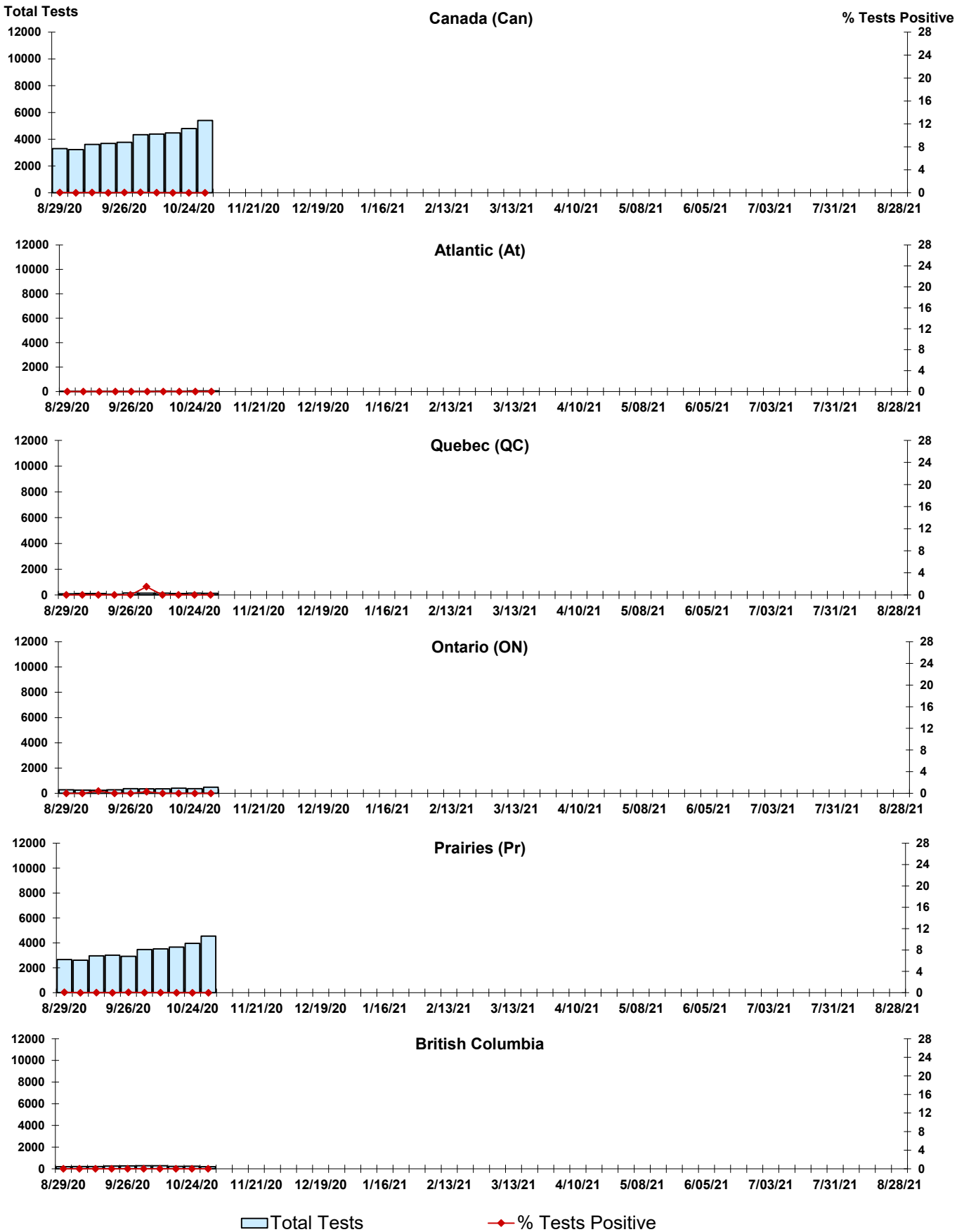


Figure 8: Positive Coronavirus (coron) Tests (%) in Canada by Region by Week of Report



Abbreviations:

A(H1N1)pdm09: Influenza A(H1N1)pdm09

A(H3): Influenza A(H3N2)

A (UnS): Influenza A (Unsubtyped)

Adeno: Adenovirus

CHEO: Children's Hospital of Eastern Ontario

Coron: Coronavirus

Entero: Enterovirus

hMPV: human metapneumovirus

HSC: Health Sciences Centre

N.A.: Not Applicable

P.H.L.: Public Health Laboratory

P.H.O.L.: Public Health Ontario Laboratory

PIV: Parainfluenza

Rhino: Rhinovirus

RSV: Respiratory syncytial virus

UHN: University Health Network

Notes:

Specimens from Yukon (YT), Northwest Territories (NT) and Nunavut (NU) are sent to reference laboratories in other provinces. Results reported for the Territories reflect the number of specimens that are identified as originating from YT, NT or NU.

Delays in the reporting of data may cause data to change retrospectively.

Due to reporting delays, the sum of weekly report totals do not add up to cumulative totals.