

# Respiratory Virus Report, Week 45 - ending November 7, 2020

The Respiratory Virus Detection Surveillance System collects data from select laboratories across Canada on the number of tests performed and the number of tests positive for influenza and other respiratory viruses. Data are reported on a weekly basis year-round to the Centre for Immunization and Respiratory Infectious Diseases (CIRID), Public Health Agency of Canada. These data are also summarized in the weekly FluWatch report.

In this Respiratory Virus Report, the number of detections of coronavirus reflects only seasonal human coronaviruses, not the novel pandemic coronavirus (SARS-CoV2) that causes COVID-19. For information on COVID-19, see the [Coronavirus disease \(COVID-19\): Outbreak](#)

**Table 1: Respiratory Virus Detections/Isolations for the week ending November 7, 2020 (Reporting Week 202045)**

Reporting Laboratory	Flu Tested	A(H1N1)pdm09 Positive	A(H3) Positive	A(UnS) Positive	Total Flu A Positive	Total Flu B Positive	RSV Tested	RSV Positive	PIV Tested	PIV 1 Positive	PIV 2 Positive	PIV 3 Positive	PIV 4 Positive	Other PIV Positive	Adeno Tested	Adeno Positive	hMPV Tested	hMPV Positive	Entero/Rhino Tested	Entero/Rhino Positive	Coron Tested	Coron Positive
Newfoundland	267	0	0	0	0	0	267	1	267	0	0	0	0	0	267	0	267	0	267	89	N.A.	N.A.
Prince Edward Island	42	0	0	0	0	0	42	2	39	0	0	0	0	0	39	0	39	0	39	7	39	0
Nova Scotia	39	0	0	0	0	0	39	0	15	0	0	0	0	0	15	0	15	0	15	3	15	0
New Brunswick	43	0	0	0	0	0	43	0	20	0	0	0	0	0	20	0	20	0	20	4	20	0
<b>Atlantic</b>	<b>391</b>	<b>0</b>	<b>0</b>	<b>0</b>	<b>0</b>	<b>0</b>	<b>391</b>	<b>3</b>	<b>341</b>	<b>0</b>	<b>0</b>	<b>0</b>	<b>0</b>	<b>0</b>	<b>341</b>	<b>0</b>	<b>341</b>	<b>0</b>	<b>341</b>	<b>103</b>	<b>74</b>	<b>0</b>
Région Nord-Est	59	0	0	0	0	0	37	0	0	0	0	0	0	0	0	0	0	0	N.A.	N.A.	0	0
Québec-Chaudière-Appalaches	19	0	0	0	0	0	21	0	14	0	0	0	0	0	14	2	14	0	N.A.	N.A.	14	0
Centre-du-Québec	34	0	0	0	0	0	34	0	3	0	0	0	0	0	3	0	3	0	N.A.	N.A.	0	0
Montréal-Laval	156	0	0	0	0	0	155	0	117	0	0	0	0	0	117	10	116	0	N.A.	N.A.	116	0
Ouest du Québec	35	0	0	0	0	0	33	0	0	0	0	0	0	0	0	0	0	0	N.A.	N.A.	0	0
Montérégie	0	0	0	0	0	0	0	0	0	0	0	0	0	0	0	0	0	0	N.A.	N.A.	0	0
<b>Province of Québec</b>	<b>303</b>	<b>0</b>	<b>0</b>	<b>0</b>	<b>0</b>	<b>0</b>	<b>280</b>	<b>0</b>	<b>134</b>	<b>0</b>	<b>0</b>	<b>0</b>	<b>0</b>	<b>0</b>	<b>134</b>	<b>12</b>	<b>133</b>	<b>0</b>	<b>N.A.</b>	<b>N.A.</b>	<b>130</b>	<b>0</b>
P.H.O.L. - Ottawa	17	0	0	0	0	0	17	1	17	0	0	0	0	0	17	0	17	0	17	1	17	0
CHEO - Ottawa	170	0	0	0	0	0	170	0	28	0	0	0	0	0	28	0	28	0	28	1	28	0
P.H.O.L. - Kingston	14	0	0	0	0	0	14	0	14	0	0	0	0	0	14	0	14	0	14	0	14	0
UHN / Mount Sinai Hospital	28	0	0	0	0	0	28	0	17	0	0	0	0	0	0	0	17	0	0	0	0	0
P.H.O.L. - Toronto	226	0	0	0	0	0	226	0	226	0	0	0	0	0	226	0	226	0	226	11	226	0
Sick Kids Hospital - Toronto	0	0	0	0	0	0	0	0	0	0	0	0	0	0	0	0	0	0	0	0	0	0
Sunnybrook & Women's College HSC	0	0	0	0	0	0	0	0	0	0	0	0	0	0	0	0	0	0	0	0	0	0
P.H.O.L. - Sault Ste. Marie	9	0	0	0	0	0	9	0	9	0	0	0	0	0	9	0	9	0	9	0	9	0
P.H.O.L. - Timmins	20	0	0	0	0	0	20	0	20	0	0	0	0	0	20	0	20	0	20	4	20	0
St. Joseph's - London	33	0	0	0	0	0	33	0	33	0	0	0	0	0	33	0	33	0	47	5	14	0
P.H.O.L. - London	84	0	0	1	1	1	84	0	84	0	0	0	0	0	84	0	84	0	84	9	84	0
P.H.O.L. - Orillia	4	0	0	0	0	0	4	0	4	0	0	0	0	0	4	0	4	0	4	1	4	0
P.H.O.L. - Thunder Bay	10	0	0	0	0	0	10	0	10	0	0	0	0	0	10	0	10	0	10	4	10	0
P.H.O.L. - Sudbury	12	0	0	0	0	0	12	0	12	0	0	0	0	0	12	0	12	0	12	2	12	0
P.H.O.L. - Hamilton	98	0	0	0	0	0	68	0	68	0	0	0	0	0	68	0	68	0	68	6	68	0
P.H.O.L. - Peterborough	8	0	0	0	0	0	3	0	3	0	0	0	0	0	3	0	3	0	3	0	3	0
St. Joseph's - Hamilton	207	0	0	0	0	0	207	0	207	0	0	0	0	0	207	0	207	0	207	11	0	0
<b>Province of Ontario</b>	<b>940</b>	<b>0</b>	<b>0</b>	<b>1</b>	<b>1</b>	<b>1</b>	<b>905</b>	<b>1</b>	<b>752</b>	<b>0</b>	<b>0</b>	<b>0</b>	<b>0</b>	<b>0</b>	<b>735</b>	<b>0</b>	<b>752</b>	<b>0</b>	<b>749</b>	<b>55</b>	<b>509</b>	<b>0</b>
Province of Manitoba	1040	0	0	0	0	0	1040	0	168	0	0	0	0	0	168	0	165	0	168	13	165	0
Province of Saskatchewan	63	0	0	0	0	0	63	0	49	0	0	0	0	0	49	0	49	0	49	7	49	0
Province of Alberta	5155	0	0	0	0	0	5025	0	5025	0	0	0	1	0	5025	3	5025	0	5025	405	5025	1
<b>Prairies</b>	<b>6258</b>	<b>0</b>	<b>0</b>	<b>0</b>	<b>0</b>	<b>0</b>	<b>6128</b>	<b>0</b>	<b>5242</b>	<b>0</b>	<b>0</b>	<b>0</b>	<b>1</b>	<b>0</b>	<b>5242</b>	<b>3</b>	<b>5239</b>	<b>0</b>	<b>5242</b>	<b>425</b>	<b>5239</b>	<b>1</b>
<b>British Columbia</b>	<b>1939</b>	<b>0</b>	<b>0</b>	<b>0</b>	<b>0</b>	<b>0</b>	<b>1939</b>	<b>0</b>	<b>629</b>	<b>0</b>	<b>0</b>	<b>0</b>	<b>0</b>	<b>0</b>	<b>629</b>	<b>4</b>	<b>629</b>	<b>0</b>	<b>614</b>	<b>86</b>	<b>214</b>	<b>0</b>
Yukon	127	0	0	0	1	1	127	0	N.A.	N.A.	N.A.	N.A.	N.A.	N.A.	N.A.	N.A.	N.A.	N.A.	N.A.	N.A.	N.A.	N.A.
Northwest Territories	15	0	0	0	0	0	15	0	15	0	0	0	0	0	15	0	15	0	15	4	15	0
Nunavut	12	0	0	0	0	0	12	0	12	0	0	0	0	0	12	2	12	0	12	8	1	0
<b>Territories</b>	<b>154</b>	<b>0</b>	<b>0</b>	<b>0</b>	<b>1</b>	<b>1</b>	<b>154</b>	<b>0</b>	<b>27</b>	<b>0</b>	<b>0</b>	<b>0</b>	<b>0</b>	<b>0</b>	<b>27</b>	<b>2</b>	<b>27</b>	<b>0</b>	<b>27</b>	<b>12</b>	<b>16</b>	<b>0</b>
<b>CANADA</b>	<b>9985</b>	<b>0</b>	<b>0</b>	<b>1</b>	<b>2</b>	<b>2</b>	<b>9797</b>	<b>4</b>	<b>7125</b>	<b>0</b>	<b>0</b>	<b>0</b>	<b>1</b>	<b>0</b>	<b>7108</b>	<b>21</b>	<b>7121</b>	<b>0</b>	<b>6973</b>	<b>681</b>	<b>6182</b>	<b>1</b>

Specimens from Yukon (YT), Northwest Territories (NT) and Nunavut (NU) are sent to reference laboratories in other provinces and reported results reflect specimens identified as originating from YT, NT or NU.

Results from British Columbia comprise of specimens from the following sites: BC Children's and Women's Hospital, Children's and Women's Hospital Laboratory, Fraser Health Medical Microbiology Laboratory, Island Health, Providence Health Care, Powell River Hospital, St. Paul's Hospital, Vancouver General Hospital, Victoria General Hospital, Victoria Coastal Health, BCCDC Public Health Laboratory, Interior Health Authority sites and Northern Health Authority sites.

Delays in the reporting of data may cause data to change retrospectively.

For BC, only data from subtyped influenza A specimens are included in the weekly number of influenza detections and so the sum of A(H1N1)pdm09, A(H3), and A(UnS) positive results may not equal the sum of total Flu A positive results.

**Table 2: Respiratory Virus Detections/Isolations for the period August 23, 2020 - November 7, 2020 (Reporting Weeks 202035-202045)**

Reporting Laboratory	Flu Tested	A(H1N1)pdm09 Positive	A(H3) Positive	A(UnS) Positive	Total Flu A Positive	Total Flu B Positive	RSV Tested	RSV Positive	PIV Tested	PIV 1 Positive	PIV 2 Positive	PIV 3 Positive	PIV 4 Positive	Other PIV Positive	Adeno Tested	Adeno Positive	hMPV Tested	hMPV Positive	Entero/Rhino Tested	Entero/Rhino Positive	Coron Tested	Coron Positive
Newfoundland	3355	0	0	0	0	0	3355	6	3355	0	0	0	0	0	3355	14	3355	1	3355	1216	N.A.	N.A.
Prince Edward Island	82	0	0	0	0	0	82	2	79	0	0	0	0	0	79	0	79	0	79	21	79	0
Nova Scotia	218	0	0	0	0	0	219	0	172	0	0	0	0	0	172	0	172	0	172	30	172	0
New Brunswick	305	0	0	0	0	0	305	0	181	0	0	0	0	0	172	3	172	0	172	28	127	0
<b>Atlantic</b>	<b>3960</b>	<b>0</b>	<b>0</b>	<b>0</b>	<b>0</b>	<b>0</b>	<b>3961</b>	<b>8</b>	<b>3787</b>	<b>0</b>	<b>0</b>	<b>0</b>	<b>0</b>	<b>0</b>	<b>3778</b>	<b>17</b>	<b>3778</b>	<b>1</b>	<b>3778</b>	<b>1295</b>	<b>378</b>	<b>0</b>
Région Nord-Est	316	0	0	0	0	1	244	0	0	0	0	0	0	0	0	0	0	0	N.A.	N.A.	0	0
Québec-Chaudière-Appalaches	200	0	0	0	0	0	232	0	170	0	0	0	0	0	172	9	167	0	N.A.	N.A.	150	0
Centre-du-Québec	133	0	0	0	0	0	138	0	65	0	0	0	0	0	63	2	65	0	N.A.	N.A.	62	0
Montréal-Laval	1469	0	0	0	0	1	1462	1	1062	0	0	0	0	0	1116	42	1052	0	N.A.	N.A.	1052	2
Ouest du Québec	205	0	0	0	0	0	191	0	0	0	0	0	0	0	0	0	0	0	N.A.	N.A.	0	0
Montérégie	0	0	0	0	0	0	0	0	0	0	0	0	0	0	0	0	0	0	N.A.	N.A.	0	0
<b>Province of Québec</b>	<b>2323</b>	<b>0</b>	<b>0</b>	<b>0</b>	<b>0</b>	<b>2</b>	<b>2267</b>	<b>1</b>	<b>1297</b>	<b>0</b>	<b>0</b>	<b>0</b>	<b>0</b>	<b>0</b>	<b>1351</b>	<b>53</b>	<b>1284</b>	<b>0</b>	<b>N.A.</b>	<b>N.A.</b>	<b>1264</b>	<b>2</b>
P.H.O.L. - Ottawa	122	0	0	0	0	0	122	1	122	0	0	0	0	0	122	0	122	0	122	6	122	0
CHEO - Ottawa	1176	0	0	1	1	1	773	3	209	0	0	0	0	0	209	1	209	0	209	23	209	0
P.H.O.L. - Kingston	244	0	0	0	0	0	244	0	244	0	0	0	0	0	244	2	241	0	244	75	241	0
UHN / Mount Sinai Hospital	109	0	0	0	0	0	109	0	171	0	1	1	1	0	0	0	131	3	20	3	40	0
P.H.O.L. - Toronto	1720	0	0	0	0	0	1718	1	1718	0	0	0	0	2	1719	5	1717	0	1718	88	1717	2
Sick Kids Hospital - Toronto	0	0	0	0	0	0	0	0	0	0	0	0	0	0	0	0	0	0	0	0	0	0
Sunnybrook & Women's College HSC	0	0	0	0	0	0	0	0	0	0	0	0	0	0	0	0	0	0	0	0	0	0
P.H.O.L. - Sault Ste. Marie	45	0	0	0	0	0	43	0	43	0	0	0	0	0	43	0	43	0	43	1	43	0
P.H.O.L. - Timmins	71	0	0	0	0	0	71	0	71	0	0	0	0	0	71	0	71	0	71	19	71	0
St. Joseph's - London	33	0	0	0	0	0	33	0	33	0	0	0	0	0	33	0	33	0	47	5	14	0
P.H.O.L. - London	477	0	0	1	1	1	473	0	473	0	0	0	0	2	473	2	469	0	473	56	469	0
P.H.O.L. - Orillia	71	0	0	0	0	0	69	0	69	0	0	0	0	0	69	0	69	0	69	8	69	0
P.H.O.L. - Thunder Bay	236	0	0	0	0	0	236	0	236	0	0	0	0	0	236	1	236	0	236	114	236	0
P.H.O.L. - Sudbury	95	0	0	0	0	0	95	0	95	0	0	0	0	0	95	0	95	0	95	10	95	0
P.H.O.L. - Hamilton	451	0	0	0	0	0	412	0	412	0	0	0	0	0	412	0	412	0	412	54	412	0
P.H.O.L. - Peterborough	188	0	0	1	1	0	150	0	150	0	0	0	0	0	150	0	150	0	150	13	150	0
St. Joseph's - Hamilton	971	0	0	0	0	0	971	0	971	0	0	0	0	0	971	1	971	0	971	114	0	0
<b>Province of Ontario</b>	<b>6009</b>	<b>0</b>	<b>0</b>	<b>3</b>	<b>3</b>	<b>2</b>	<b>5519</b>	<b>5</b>	<b>5017</b>	<b>0</b>	<b>1</b>	<b>1</b>	<b>1</b>	<b>4</b>	<b>4847</b>	<b>12</b>	<b>4969</b>	<b>3</b>	<b>4880</b>	<b>589</b>	<b>3888</b>	<b>2</b>
Manitoba	7438	0	0	0	0	0	7438	23	987	0	1	0	0	0	987	8	914	0	987	87	914	1
Province of Saskatchewan	744	0	0	0	0	0	744	1	583	0	0	0	0	0	583	5	583	0	583	93	583	0
Province of Alberta	37602	0	0	1	1	0	37461	0	37461	2	12	1	3	0	37461	54	37461	8	37461	3875	37461	7
<b>Prairies</b>	<b>45784</b>	<b>0</b>	<b>0</b>	<b>1</b>	<b>1</b>	<b>0</b>	<b>45643</b>	<b>24</b>	<b>39031</b>	<b>2</b>	<b>13</b>	<b>1</b>	<b>3</b>	<b>0</b>	<b>39031</b>	<b>67</b>	<b>38958</b>	<b>8</b>	<b>39031</b>	<b>4055</b>	<b>38958</b>	<b>8</b>
<b>British Columbia</b>	<b>15020</b>	<b>0</b>	<b>0</b>	<b>0</b>	<b>2</b>	<b>1</b>	<b>15020</b>	<b>3</b>	<b>3751</b>	<b>0</b>	<b>1</b>	<b>0</b>	<b>1</b>	<b>0</b>	<b>3751</b>	<b>22</b>	<b>3751</b>	<b>18</b>	<b>3681</b>	<b>487</b>	<b>2629</b>	<b>0</b>
Yukon	2042	0	0	0	3	3	2074	4	N.A.	N.A.	N.A.	N.A.	N.A.	N.A.	N.A.	N.A.	N.A.	N.A.	N.A.	N.A.	N.A.	N.A.
Northwest Territories	419	0	0	0	0	0	419	0	419	0	0	0	1	0	419	3	419	0	419	153	419	0
Nunavut	918	0	0	0	0	0	918	0	918	3	1	0	0	0	918	14	918	5	918	258	152	0
<b>Territories</b>	<b>3379</b>	<b>0</b>	<b>0</b>	<b>0</b>	<b>3</b>	<b>3</b>	<b>3411</b>	<b>4</b>	<b>1337</b>	<b>3</b>	<b>1</b>	<b>0</b>	<b>1</b>	<b>0</b>	<b>1337</b>	<b>17</b>	<b>1337</b>	<b>5</b>	<b>1337</b>	<b>411</b>	<b>571</b>	<b>0</b>
<b>CANADA</b>	<b>76475</b>	<b>0</b>	<b>0</b>	<b>4</b>	<b>9</b>	<b>8</b>	<b>75821</b>	<b>45</b>	<b>54220</b>	<b>5</b>	<b>16</b>	<b>2</b>	<b>6</b>	<b>4</b>	<b>54095</b>	<b>188</b>	<b>54077</b>	<b>35</b>	<b>52707</b>	<b>6837</b>	<b>47688</b>	<b>12</b>

Specimens from YT, NT and NU are sent to reference laboratories in other provinces and reported results reflect specimens identified as originating from YT, NT or NU.

Results from British Columbia comprise of specimens from the following sites: BC Children's and Women's Hospital, Children's and Women's Hospital Laboratory, Fraser Health Medical Microbiology Laboratory, Island Health, Providence Health Care, Powell River Hospital, St. Paul's Hospital, Vancouver General Hospital, Victoria General Hospital, Victoria Coastal Health, BCCDC Public Health Laboratory, Interior Health Authority sites and Northern Health Authority sites.

Delays in the reporting of data may cause data to change retrospectively. Due to reporting delays, the sum of weekly report totals do not add up to cumulative totals.

For BC, only data from subtyped influenza A specimens are included in the weekly number of influenza detections and so the sum of A(H1N1)pdm09, A(H3), and A(UnS) positive results may not equal the sum of total Flu A positive results.

Figure 1: Number positive laboratory tests for other respiratory viruses by report week, Canada, 2020-21

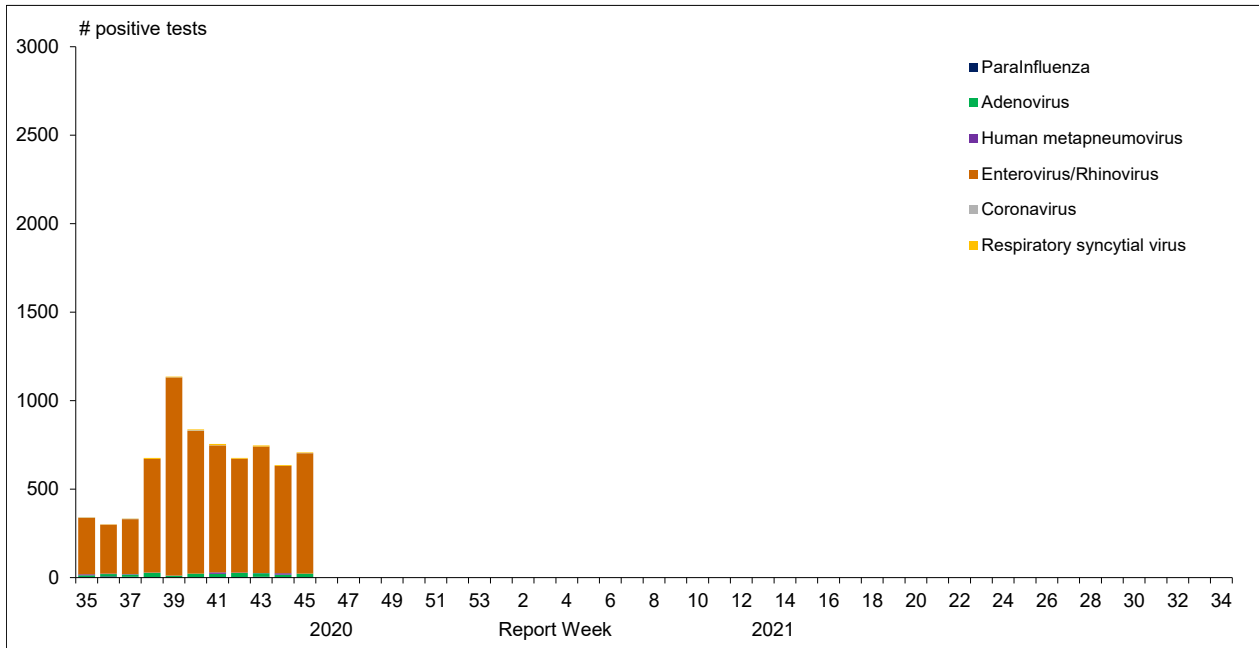


Figure 2 : Positive Influenza Tests (%) in Canada by Region by Week of Report

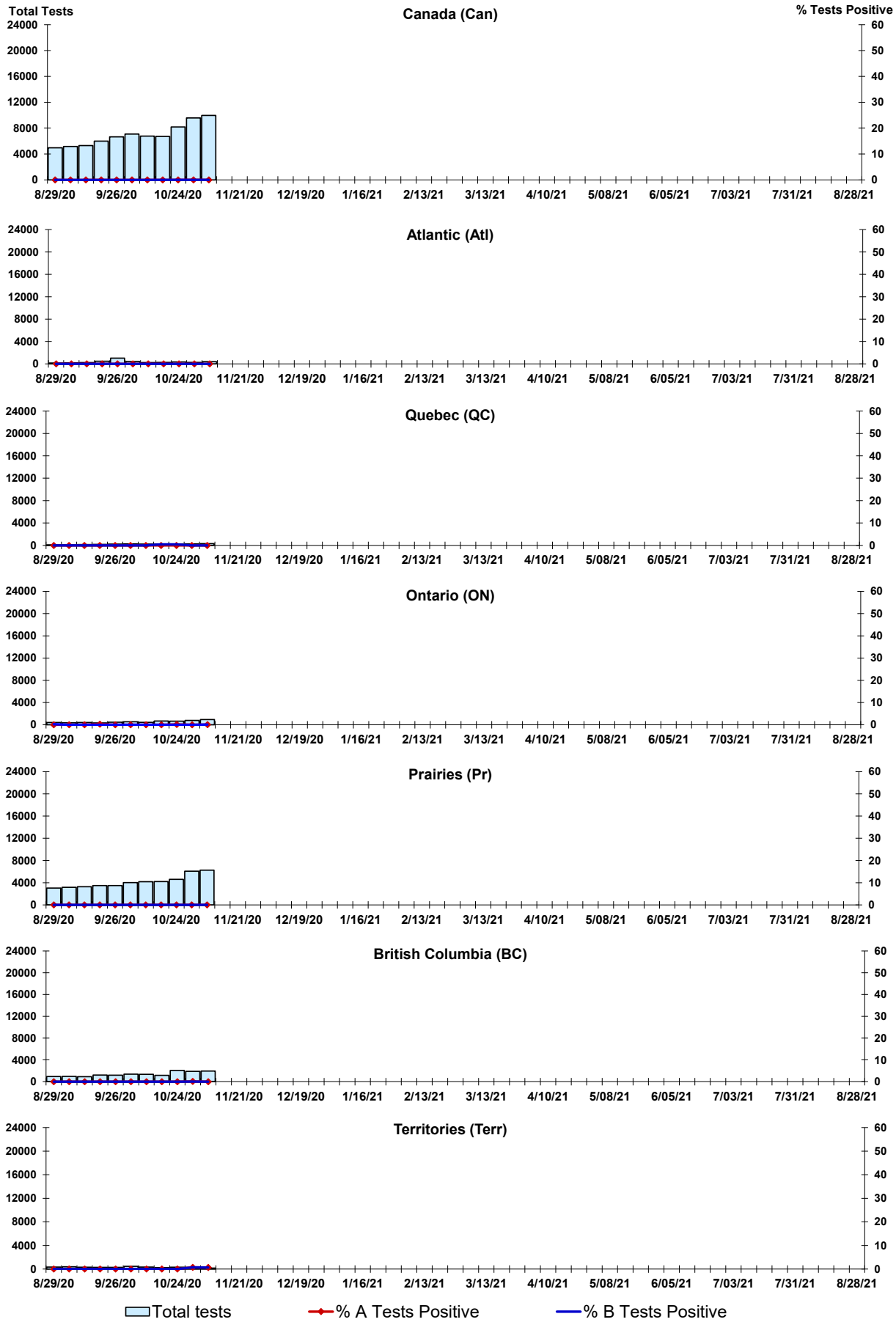


Figure 3: Positive Respiratory syncytial virus (RSV) Tests (%) in Canada by Region by Week of Report

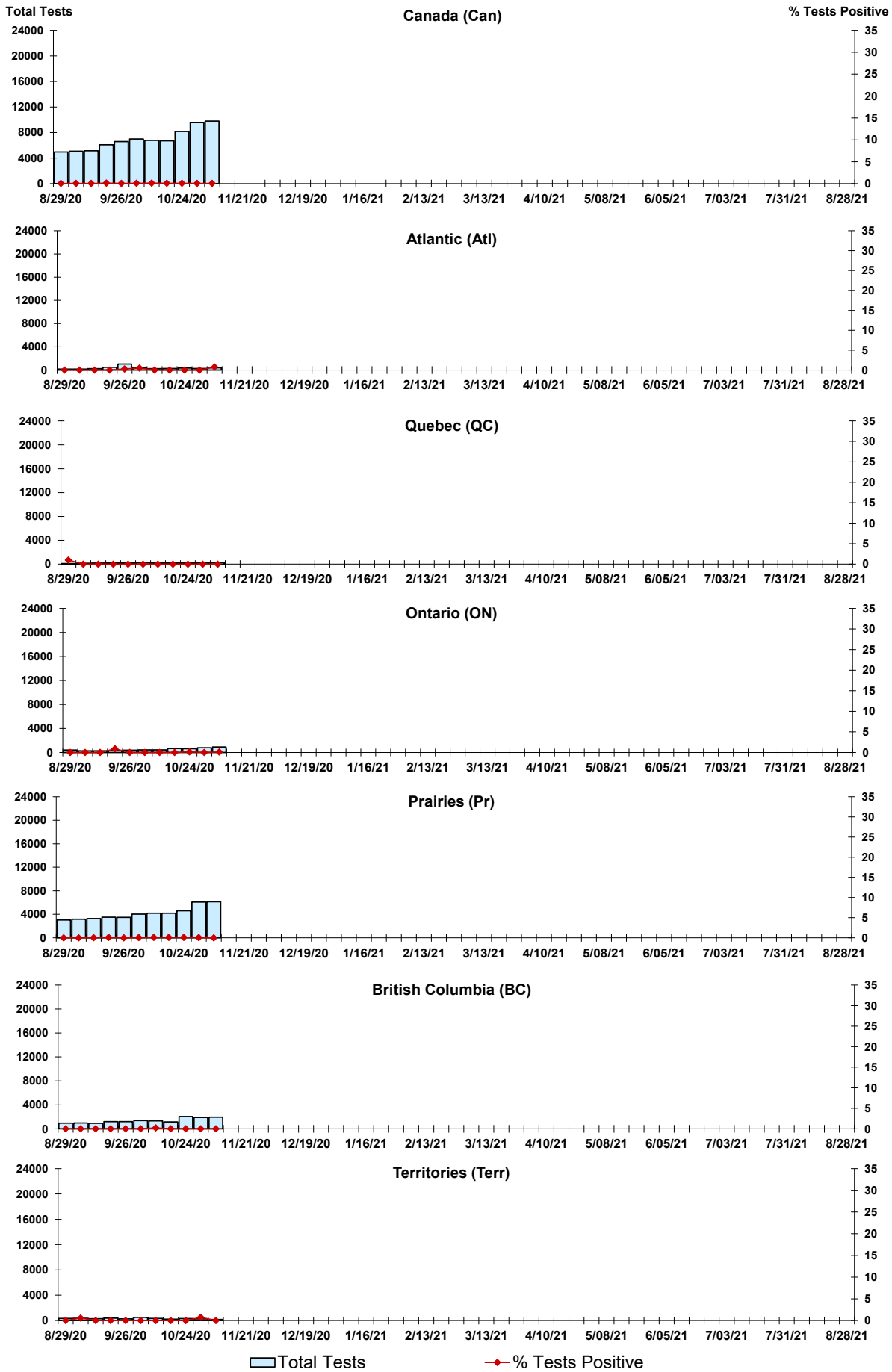


Figure 4: Positive Parainfluenza (PIV) Tests (%) in Canada by Region by Week of Report

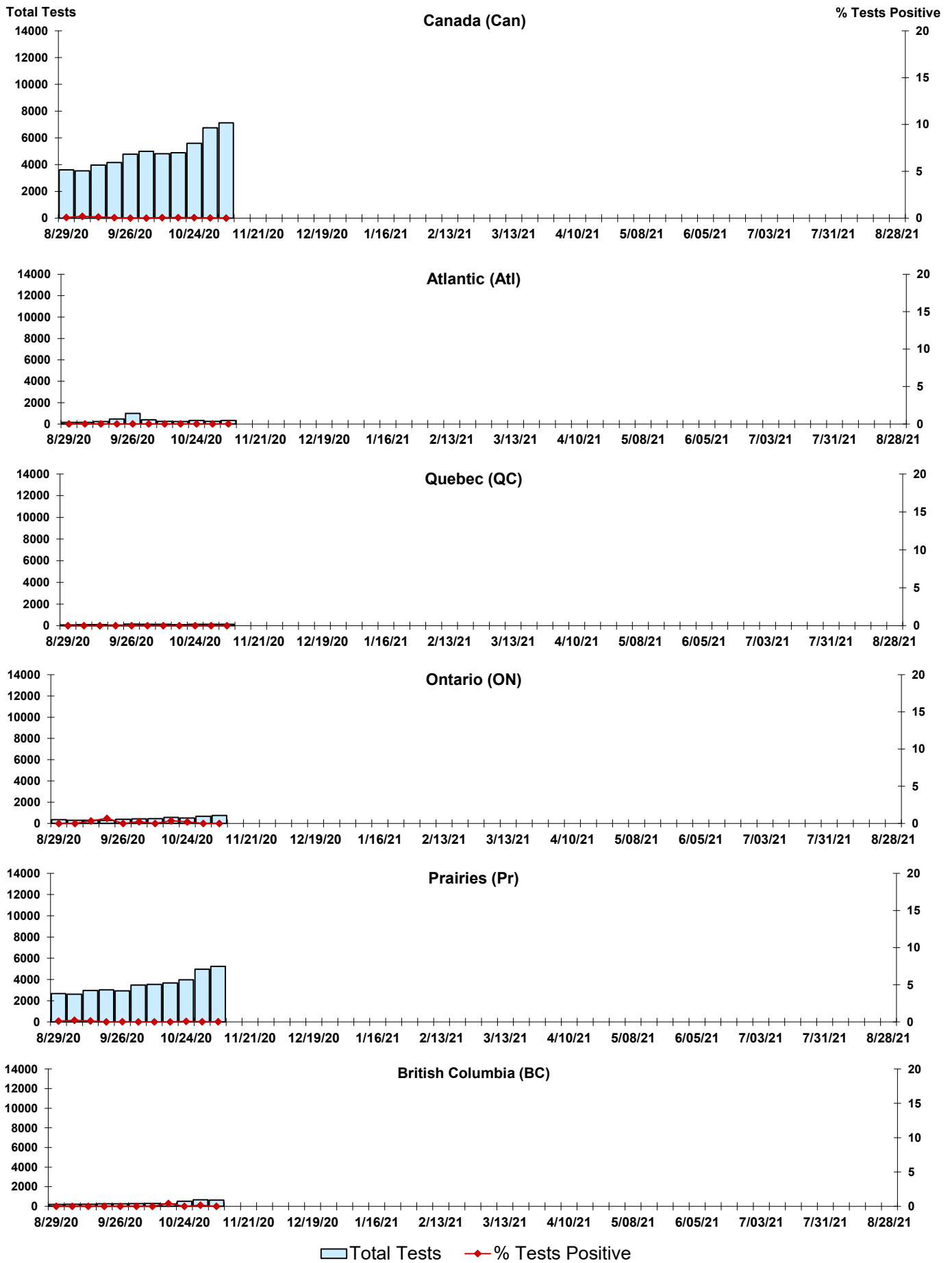


Figure 5: Positive Adenovirus (adeno) Tests (%) in Canada by Region by Week of Report

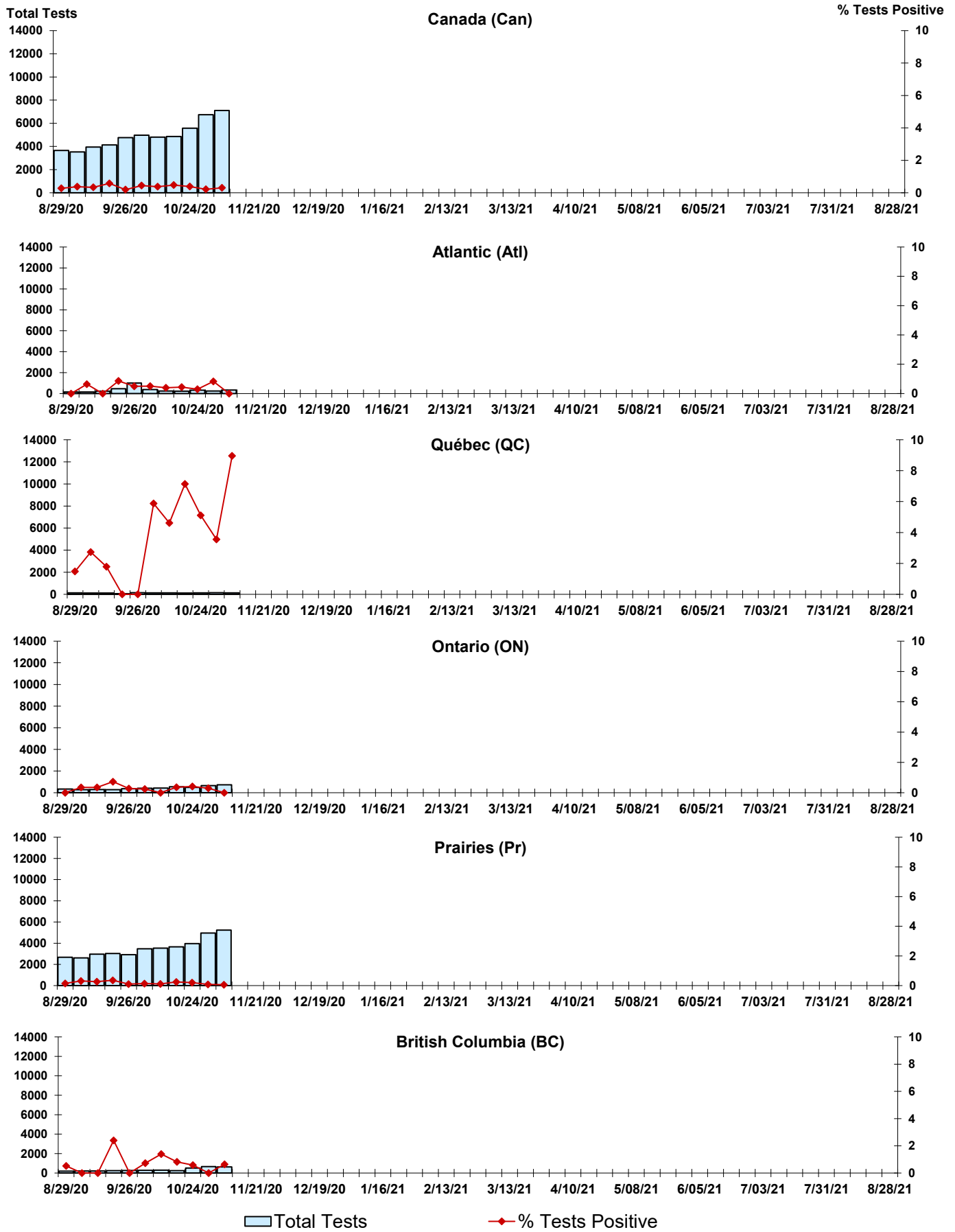


Figure 6: Positive human metapneumovirus (hMPV) Tests (%) in Canada by Region by Week of Report

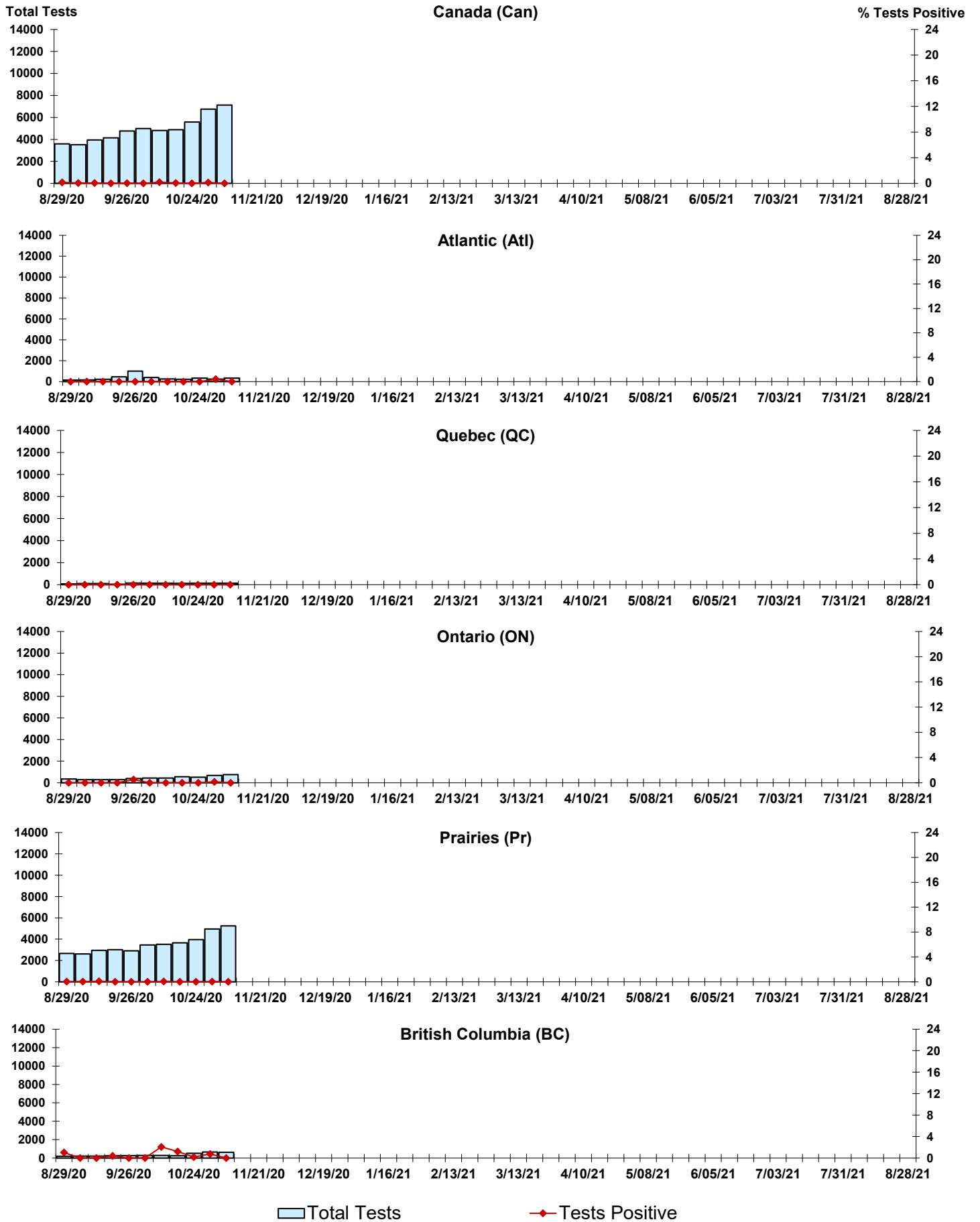




Figure 7: Positive Enterovirus/Rhinovirus (entero/rhino) Tests (%) in Canada by Region by Week of Report

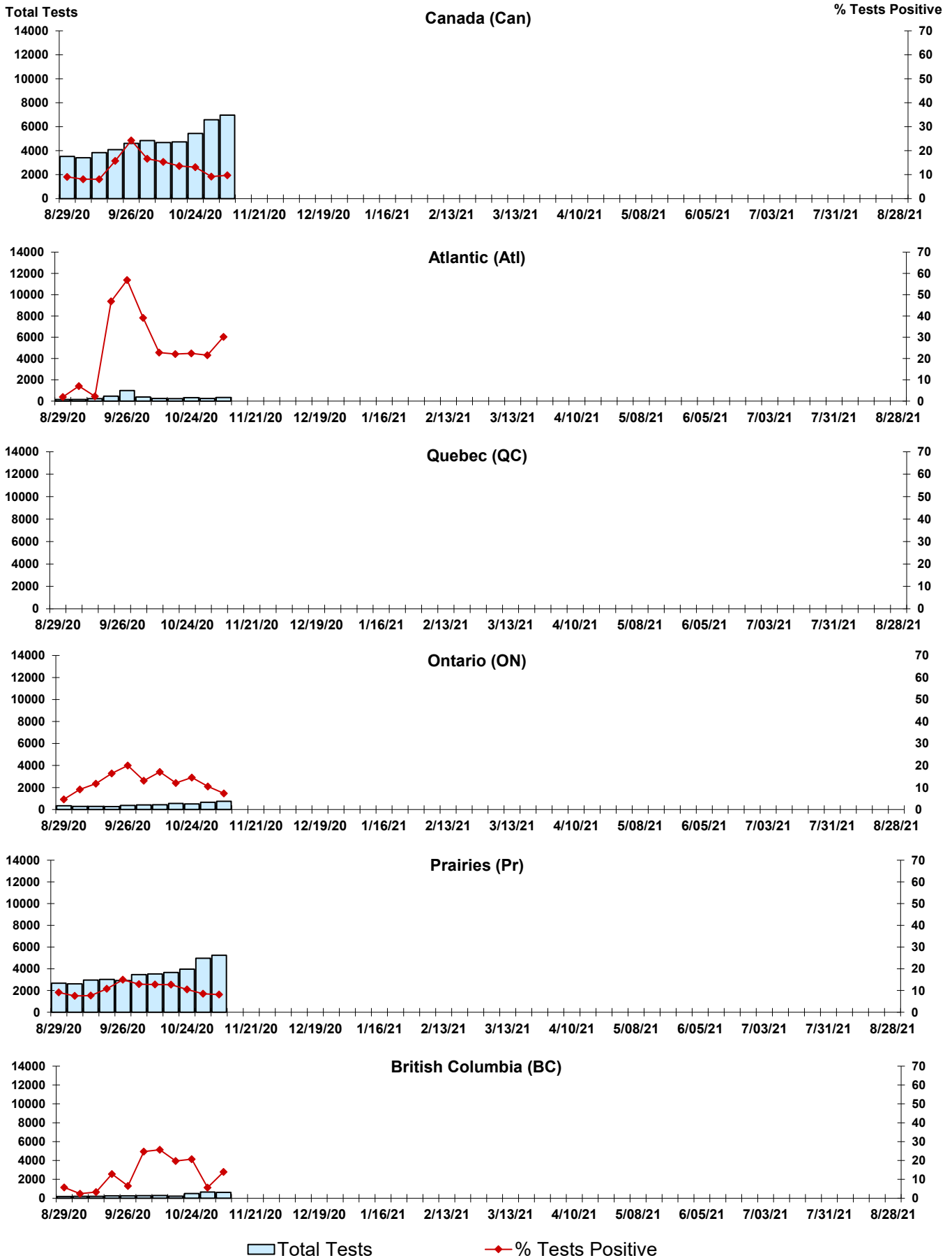
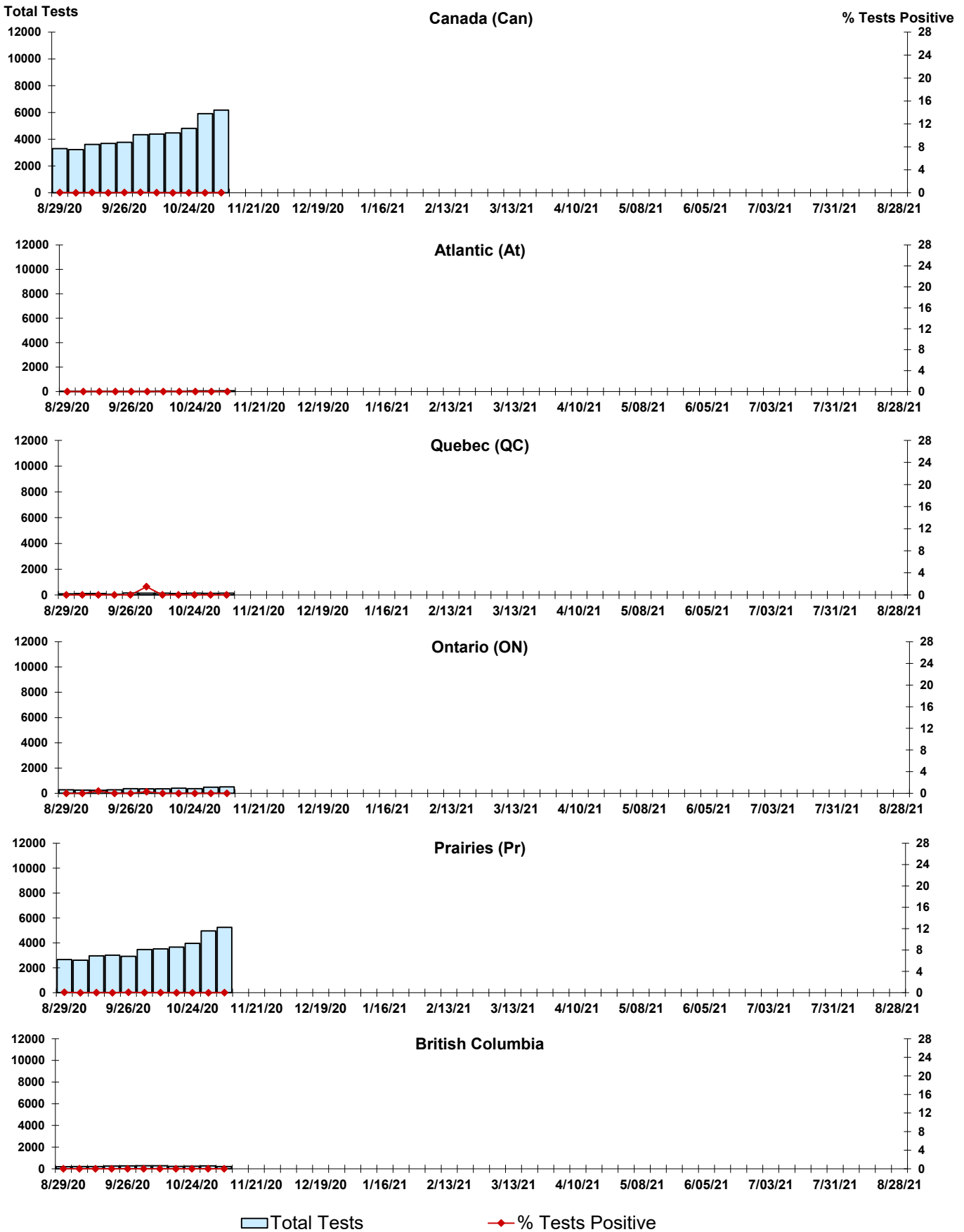


Figure 8: Positive Coronavirus (coron) Tests (%) in Canada by Region by Week of Report



## Abbreviations:

A(H1N1)pdm09: Influenza A(H1N1)pdm09

A(H3): Influenza A(H3N2)

A (UnS): Influenza A (Unsubtyped)

Adeno: Adenovirus

CHEO: Children's Hospital of Eastern Ontario

Coron: Coronavirus

Entero: Enterovirus

hMPV: human metapneumovirus

HSC: Health Sciences Centre

N.A.: Not Applicable

P.H.L.: Public Health Laboratory

P.H.O.L.: Public Health Ontario Laboratory

PIV: Parainfluenza

Rhino: Rhinovirus

RSV: Respiratory syncytial virus

UHN: University Health Network

## Notes:

Specimens from Yukon (YT), Northwest Territories (NT) and Nunavut (NU) are sent to reference laboratories in other provinces. Results reported for the Territories reflect the number of specimens that are identified as originating from YT, NT or NU.

Delays in the reporting of data may cause data to change retrospectively.

Due to reporting delays, the sum of weekly report totals do not add up to cumulative totals.