

Respiratory Virus Report, Week 48 - ending November 28, 2020

The Respiratory Virus Detection Surveillance System collects data from select laboratories across Canada on the number of tests performed and the number of tests positive for influenza and other respiratory viruses. Data are reported on a weekly basis year-round to the Centre for Immunization and Respiratory Infectious Diseases (CIRID), Public Health Agency of Canada. These data are also summarized in the weekly FluWatch report.

In this Respiratory Virus Report, the number of detections of coronavirus reflects only seasonal human coronaviruses, not the novel pandemic coronavirus (SARS-CoV2) that causes COVID-19. For information on COVID-19, see the [Coronavirus disease \(COVID-19\): Outbreak](#)

Table 1: Respiratory Virus Detections/Isolations for the week ending November 28, 2020 (Reporting Week 202048)

Reporting Laboratory	Flu Tested	A(H1N1)pdm09 Positive	A(H3) Positive	A(UnS) Positive	Total Flu A Positive	Total Flu B Positive	RSV Tested	RSV Positive	PIV Tested	PIV 1 Positive	PIV 2 Positive	PIV 3 Positive	PIV 4 Positive	Other PIV Positive	Adeno Tested	Adeno Positive	hMPV Tested	hMPV Positive	Entero/Rhino Tested	Entero/Rhino Positive	Coron Tested	Coron Positive
Newfoundland	472	0	0	0	0	0	472	0	472	0	0	1	0	0	474	2	472	0	472	102	N.A.	N.A.
Prince Edward Island	107	0	0	0	0	0	107	0	107	0	0	0	0	0	107	0	107	0	107	16	107	0
Nova Scotia	59	0	0	0	0	0	60	0	6	0	0	0	0	0	6	1	6	0	6	1	6	0
New Brunswick	N.A.	N.A.	N.A.	N.A.	N.A.	N.A.	N.A.	N.A.	N.A.	N.A.	N.A.	N.A.	N.A.	N.A.	N.A.	N.A.	N.A.	N.A.	N.A.	N.A.	N.A.	N.A.
Atlantic	638	0	0	0	0	0	639	0	585	0	0	1	0	0	587	3	585	0	585	119	113	0
Région Nord-Est	N.A.	N.A.	N.A.	N.A.	N.A.	N.A.	N.A.	N.A.	N.A.	N.A.	N.A.	N.A.	N.A.	N.A.	N.A.	N.A.	N.A.	N.A.	N.A.	N.A.	N.A.	N.A.
Québec-Chaudière-Appalaches	N.A.	N.A.	N.A.	N.A.	N.A.	N.A.	N.A.	N.A.	N.A.	N.A.	N.A.	N.A.	N.A.	N.A.	N.A.	N.A.	N.A.	N.A.	N.A.	N.A.	N.A.	N.A.
Centre-du-Québec	N.A.	N.A.	N.A.	N.A.	N.A.	N.A.	N.A.	N.A.	N.A.	N.A.	N.A.	N.A.	N.A.	N.A.	N.A.	N.A.	N.A.	N.A.	N.A.	N.A.	N.A.	N.A.
Montréal-Laval	N.A.	N.A.	N.A.	N.A.	N.A.	N.A.	N.A.	N.A.	N.A.	N.A.	N.A.	N.A.	N.A.	N.A.	N.A.	N.A.	N.A.	N.A.	N.A.	N.A.	N.A.	N.A.
Ouest du Québec	N.A.	N.A.	N.A.	N.A.	N.A.	N.A.	N.A.	N.A.	N.A.	N.A.	N.A.	N.A.	N.A.	N.A.	N.A.	N.A.	N.A.	N.A.	N.A.	N.A.	N.A.	N.A.
Montérégie	N.A.	N.A.	N.A.	N.A.	N.A.	N.A.	N.A.	N.A.	N.A.	N.A.	N.A.	N.A.	N.A.	N.A.	N.A.	N.A.	N.A.	N.A.	N.A.	N.A.	N.A.	N.A.
Province of Québec	N.A.	N.A.	N.A.	N.A.	N.A.	N.A.	N.A.	N.A.	N.A.	N.A.	N.A.	N.A.	N.A.	N.A.	N.A.	N.A.	N.A.	N.A.	N.A.	N.A.	N.A.	N.A.
P.H.O.L. - Ottawa	30	0	0	0	0	0	30	0	30	0	0	0	0	0	30	0	30	0	30	6	30	0
CHEO - Ottawa	181	0	0	0	0	0	181	0	38	0	0	0	0	0	38	0	38	0	38	4	38	0
P.H.O.L. - Kingston	37	0	0	0	0	0	37	0	23	0	0	0	0	0	23	0	23	0	23	5	23	0
UHN / Mount Sinai Hospital	562	0	0	0	0	0	562	0	502	0	0	0	0	0	0	0	502	0	502	11	0	0
P.H.O.L. - Toronto	194	0	0	0	0	0	194	0	194	0	0	0	0	0	194	0	194	0	194	5	194	0
Sick Kids Hospital - Toronto	0	0	0	0	0	0	0	0	0	0	0	0	0	0	0	0	0	0	0	0	0	0
Sunnybrook & Women's College HSC	0	0	0	0	0	0	0	0	0	0	0	0	0	0	0	0	0	0	0	0	0	0
P.H.O.L. - Sault Ste. Marie	4	0	0	0	0	0	4	0	4	0	0	0	0	0	4	0	4	0	4	0	4	0
P.H.O.L. - Timmins	21	0	0	0	0	0	21	0	4	0	0	0	0	0	4	0	4	0	4	2	4	0
St. Joseph's - London	0	0	0	0	0	0	0	0	0	0	0	0	0	0	0	0	0	0	0	0	0	0
P.H.O.L. - London	119	0	0	0	0	1	115	0	107	0	0	0	0	0	107	0	107	0	107	16	107	0
P.H.O.L. - Orillia	10	0	0	0	0	0	10	0	10	0	0	0	0	0	10	0	10	0	10	0	10	0
P.H.O.L. - Thunder Bay	16	0	0	0	0	0	16	0	16	0	0	0	0	0	16	0	16	0	16	5	16	0
P.H.O.L. - Sudbury	38	0	0	0	0	0	36	0	35	0	0	0	0	0	35	1	35	0	35	3	35	0
P.H.O.L. - Hamilton	89	0	0	0	0	0	88	0	78	0	0	0	0	0	78	1	78	0	78	1	78	0
P.H.O.L. - Peterborough	13	0	0	0	0	0	10	0	9	0	0	0	0	0	9	0	9	0	9	0	9	0
St. Joseph's - Hamilton	287	0	0	0	0	0	287	0	287	0	0	0	0	0	287	3	287	0	287	30	0	0
Province of Ontario	1601	0	0	0	0	1	1591	0	1337	0	0	0	0	0	835	5	1337	0	1337	88	548	0
Province of Manitoba	2347	0	0	0	0	0	2347	2	125	0	0	0	0	0	125	0	124	0	125	2	124	0
Province of Saskatchewan	128	0	0	0	0	0	128	0	81	0	0	0	0	0	81	0	81	0	81	3	81	0
Province of Alberta	4754	0	0	0	0	0	4501	0	4501	0	0	0	0	0	4501	5	4501	0	4501	284	4501	1
Prairies	7229	0	0	0	0	0	6976	2	4707	0	0	0	0	0	4707	5	4706	0	4707	289	4706	1
British Columbia	1747	0	0	1	1	0	1747	0	765	0	0	0	0	0	765	1	765	2	747	76	235	0
Yukon	680	0	0	1	1	0	680	0	N.A.	N.A.	N.A.	N.A.	N.A.	N.A.	N.A.	N.A.	N.A.	N.A.	N.A.	N.A.	N.A.	N.A.
Northwest Territories	7	0	0	0	0	0	7	0	7	0	0	0	0	0	7	0	7	0	7	1	7	0
Nunavut	54	0	0	0	0	0	54	0	54	0	0	0	0	0	54	3	54	0	54	8	4	0
Territories	741	0	0	1	1	0	741	0	61	0	0	0	0	0	61	3	61	0	61	9	11	0
CANADA	11956	0	0	2	2	1	11694	2	7455	0	0	1	0	0	6955	17	7454	2	7437	581	5613	1

The data in the RVDSS report represent surveillance data available at the time of writing. Missing data are denoted by N.A.

Specimens from Yukon (YT), Northwest Territories (NT) and Nunavut (NU) are sent to reference laboratories in other provinces and reported results reflect specimens identified as originating from YT, NT or NU.

Results from British Columbia comprise of specimens from the following sites: BC Children's and Women's Hospital, Children's and Women's Hospital Laboratory, Fraser Health Medical Microbiology Laboratory, Island Health, Providence Health Care, Powell River Hospital, St. Paul's Hospital, Vancouver General Hospital, Victoria General Hospital, Victoria Coastal Health, BCCDC Public Health Laboratory, Interior Health Authority sites and Northern Health Authority sites.

Delays in the reporting of data may cause data to change retrospectively.

Table 2: Respiratory Virus Detections/Isolations for the period August 23, 2020 - November 28, 2020 (Reporting Weeks 202035-202048)

Reporting Laboratory	Flu Tested	A(H1N1)pdm09 Positive	A(H3) Positive	A(UnS) Positive	Total Flu A Positive	Total Flu B Positive	RSV Tested	RSV Positive	PIV Tested	PIV 1 Positive	PIV 2 Positive	PIV 3 Positive	PIV 4 Positive	Other PIV Positive	Adeno Tested	Adeno Positive	hMPV Tested	hMPV Positive	Entero/Rhino Tested	Entero/Rhino Positive	Coron Tested	Coron Positive
Newfoundland	4397	0	0	0	0	0	4397	6	4397	0	0	1	0	0	4399	17	4397	1	4397	1460	N.A.	N.A.
Prince Edward Island	373	0	0	0	0	0	373	2	369	2	0	0	0	0	369	2	369	0	369	75	369	0
Nova Scotia	358	0	0	0	0	0	360	0	205	0	0	0	0	0	205	2	205	0	205	35	205	0
New Brunswick	386	0	0	0	0	0	386	0	216	0	0	0	0	0	207	4	207	0	207	35	162	0
Atlantic	5514	0	0	0	0	0	5516	8	5187	2	0	1	0	0	5180	25	5178	1	5178	1605	736	0
Région Nord-Est	437	0	0	1	1	0	316	1	0	0	0	0	0	0	0	0	0	0	N.A.	N.A.	0	0
Québec-Chaudière-Appalaches	246	0	0	0	0	0	286	0	196	0	0	0	0	0	198	12	193	0	N.A.	N.A.	176	0
Centre-du-Québec	193	0	0	0	0	0	198	0	83	0	0	0	0	0	81	4	83	0	N.A.	N.A.	80	0
Montréal-Laval	1746	0	0	0	0	0	1733	1	1240	0	0	0	0	0	1294	49	1230	0	N.A.	N.A.	1230	2
Ouest du Québec	260	0	0	0	0	0	243	0	0	0	0	0	0	0	0	0	0	0	N.A.	N.A.	0	0
Montérégie	0	0	0	0	0	0	0	0	0	0	0	0	0	0	0	0	0	0	N.A.	N.A.	0	0
Province of Québec	2882	0	0	1	1	0	2776	2	1519	0	0	0	0	0	1573	65	1506	0	N.A.	N.A.	1486	2
P.H.O.L. - Ottawa	209	0	0	0	0	0	209	1	202	0	0	0	0	0	202	0	202	0	202	13	202	0
CHEO - Ottawa	1665	0	0	1	1	1	1262	4	280	0	0	0	0	0	280	2	280	0	280	29	280	0
P.H.O.L. - Kingston	357	0	0	0	0	0	357	0	311	0	0	0	0	0	311	2	308	0	311	89	308	0
UHN / Mount Sinai Hospital	1236	0	0	0	0	1	1236	1	1032	0	1	1	1	0	0	0	992	4	789	19	40	0
P.H.O.L. - Toronto	2287	0	0	0	0	0	2285	1	2285	0	0	0	0	2	2286	6	2284	0	2285	115	2284	2
Sick Kids Hospital - Toronto	0	0	0	0	0	0	0	0	0	0	0	0	0	0	0	0	0	0	0	0	0	0
Sunnybrook & Women's College HSC	0	0	0	0	0	0	0	0	0	0	0	0	0	0	0	0	0	0	0	0	0	0
P.H.O.L. - Sault Ste. Marie	60	0	0	2	2	0	58	0	57	0	0	0	0	0	57	0	57	0	57	3	57	0
P.H.O.L. - Timmins	200	0	0	0	0	0	200	0	96	0	0	0	0	0	96	0	96	0	96	23	96	0
St. Joseph's - London	218	0	0	0	0	0	218	0	55	0	0	0	0	0	55	0	55	0	91	8	36	0
P.H.O.L. - London	765	0	0	1	1	2	757	0	694	0	0	0	0	2	694	2	690	0	694	88	690	0
P.H.O.L. - Orillia	105	0	0	0	0	0	103	0	101	0	0	0	0	0	101	0	101	0	101	8	101	0
P.H.O.L. - Thunder Bay	262	0	0	0	0	0	262	0	262	0	0	0	0	0	263	1	262	0	262	120	262	0
P.H.O.L. - Sudbury	162	0	0	0	0	0	160	0	158	0	0	0	0	0	158	1	158	0	158	14	158	0
P.H.O.L. - Hamilton	697	0	0	0	0	0	654	0	628	0	0	0	0	0	628	2	628	0	628	73	628	0
P.H.O.L. - Peterborough	239	0	0	1	1	0	194	0	186	0	0	0	0	0	186	0	186	0	186	18	186	0
St. Joseph's - Hamilton	1870	0	0	0	0	0	1870	0	1870	0	0	0	0	0	1870	6	1870	0	1870	214	0	0
Province of Ontario	10332	0	0	5	5	4	9825	7	8217	0	1	1	1	4	7187	22	8169	4	8010	834	5328	2
Manitoba	13690	0	0	0	0	0	13690	33	1346	0	1	1	0	0	1346	8	1266	0	1346	100	1266	1
Province of Saskatchewan	1201	0	0	0	0	0	1201	1	807	0	0	0	0	0	807	8	807	0	807	108	807	0
Province of Alberta	53862	0	0	1	1	0	53305	0	53305	2	16	1	3	0	53305	74	53305	10	53305	4958	53305	14
Prairies	68753	0	0	1	1	0	68196	34	55458	2	17	2	3	0	55458	90	55378	10	55458	5166	55378	15
British Columbia	21840	0	0	4	4	2	21723	3	5372	0	1	0	2	0	5838	31	5838	22	5725	741	3334	0
Yukon	3149	0	0	8	8	7	3175	4	N.A.	N.A.	N.A.	N.A.	N.A.	N.A.	N.A.	N.A.	N.A.	N.A.	N.A.	N.A.	N.A.	N.A.
Northwest Territories	512	0	0	0	0	0	512	0	512	0	0	0	1	0	512	3	512	1	512	179	512	0
Nunavut	1032	0	0	0	0	0	1032	0	1032	3	1	0	0	0	1032	20	1032	5	1032	272	163	0
Territories	4693	0	0	8	8	7	4719	4	1544	3	1	0	1	0	1544	23	1544	6	1544	451	675	0
CANADA	114014	0	0	19	19	13	112755	58	77297	7	20	4	7	4	76780	256	77613	43	75915	8797	66937	19

The data in the RVDSS report represent surveillance data available at the time of writing. Missing data are denoted by N.A.

Specimens from YT, NT and NU are sent to reference laboratories in other provinces and reported results reflect specimens identified as originating from YT, NT or NU.

Results from British Columbia comprise of specimens from the following sites: BC Children's and Women's Hospital, Children's and Women's Hospital Laboratory, Fraser Health Medical Microbiology Laboratory, Island Health, Providence Health Care, Powell River Hospital, St. Paul's Hospital, Vancouver General Hospital, Victoria General Hospital, Victoria Coastal Health, BCCDC Public Health Laboratory, Interior Health Authority sites and Northern Health Authority sites.

Delays in the reporting of data may cause data to change retrospectively.

Due to reporting delays, the sum of weekly report totals do not add up to cumulative totals.

Figure 1: Number positive laboratory tests for other respiratory viruses by report week, Canada, 2020-21

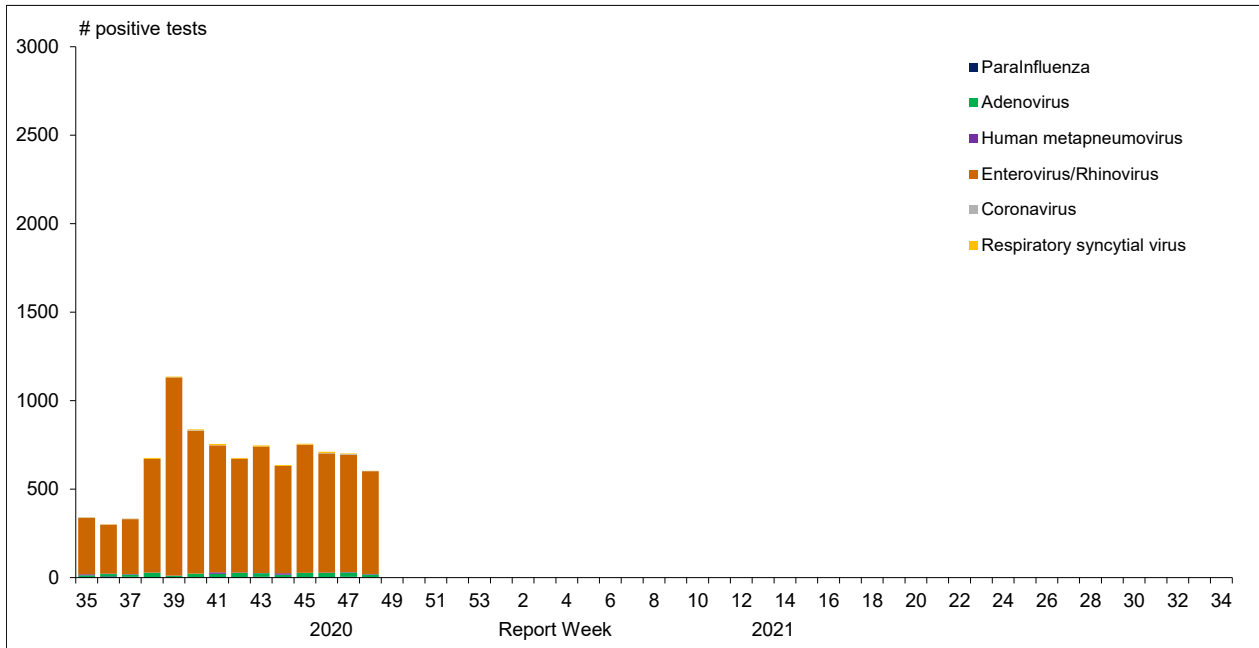


Figure 2 : Positive Influenza Tests (%) in Canada by Region by Week of Report

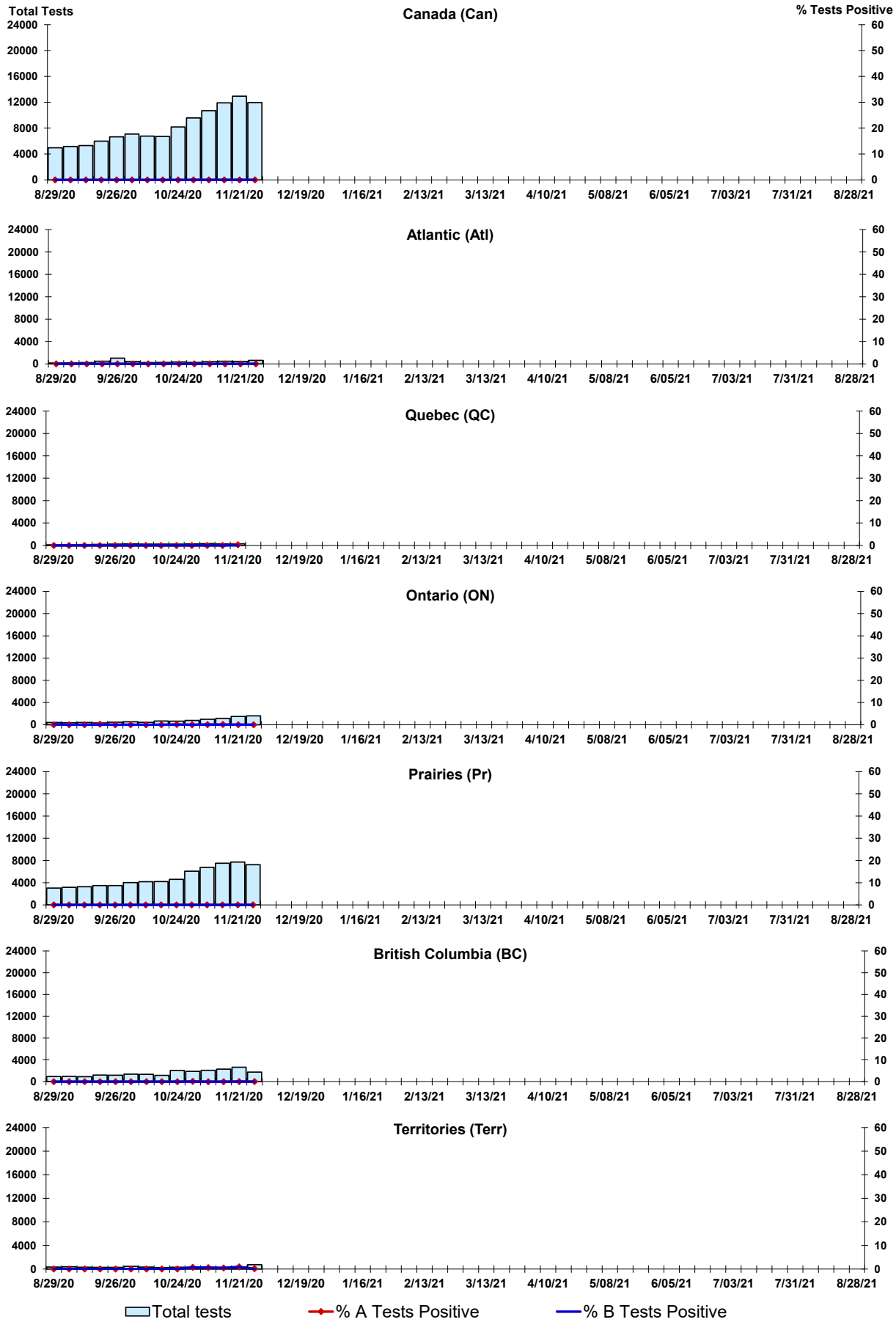


Figure 3: Positive Respiratory syncytial virus (RSV) Tests (%) in Canada by Region by Week of Report

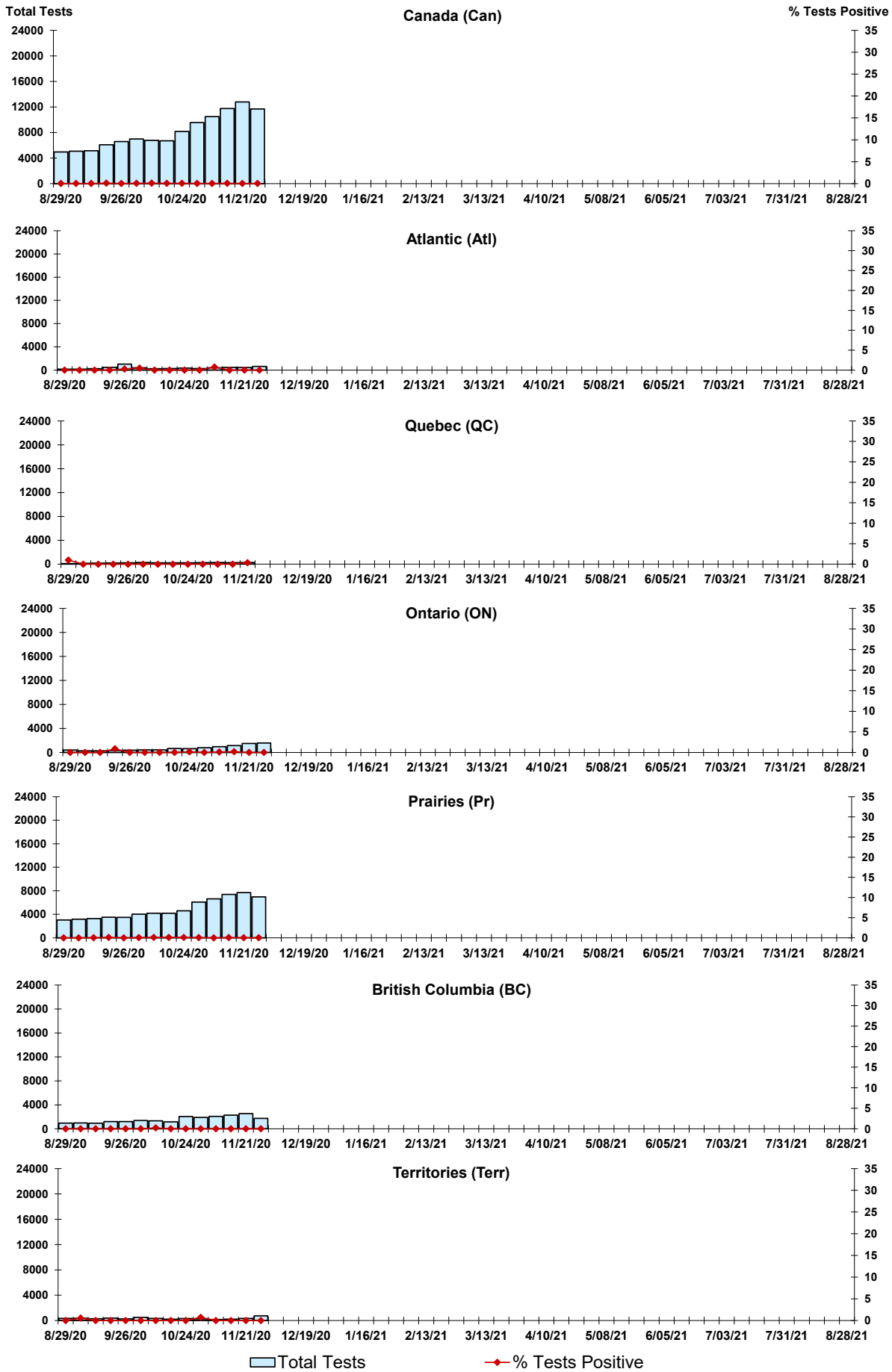
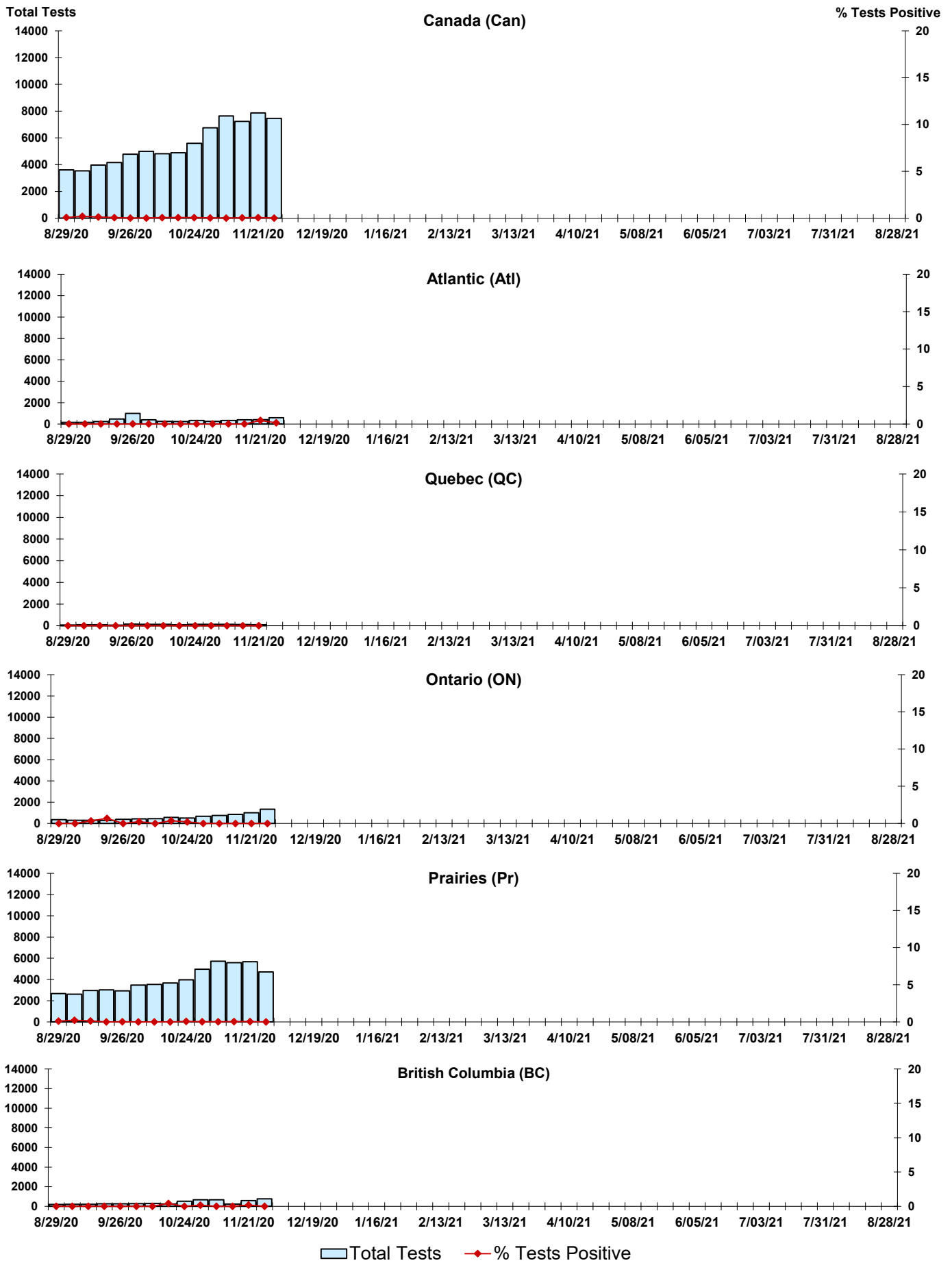


Figure 4: Positive Parainfluenza (PIV) Tests (%) in Canada by Region by Week of Report



Legend: Total Tests (light blue bar), % Tests Positive (red diamond)

Figure 5: Positive Adenovirus (adeno) Tests (%) in Canada by Region by Week of Report

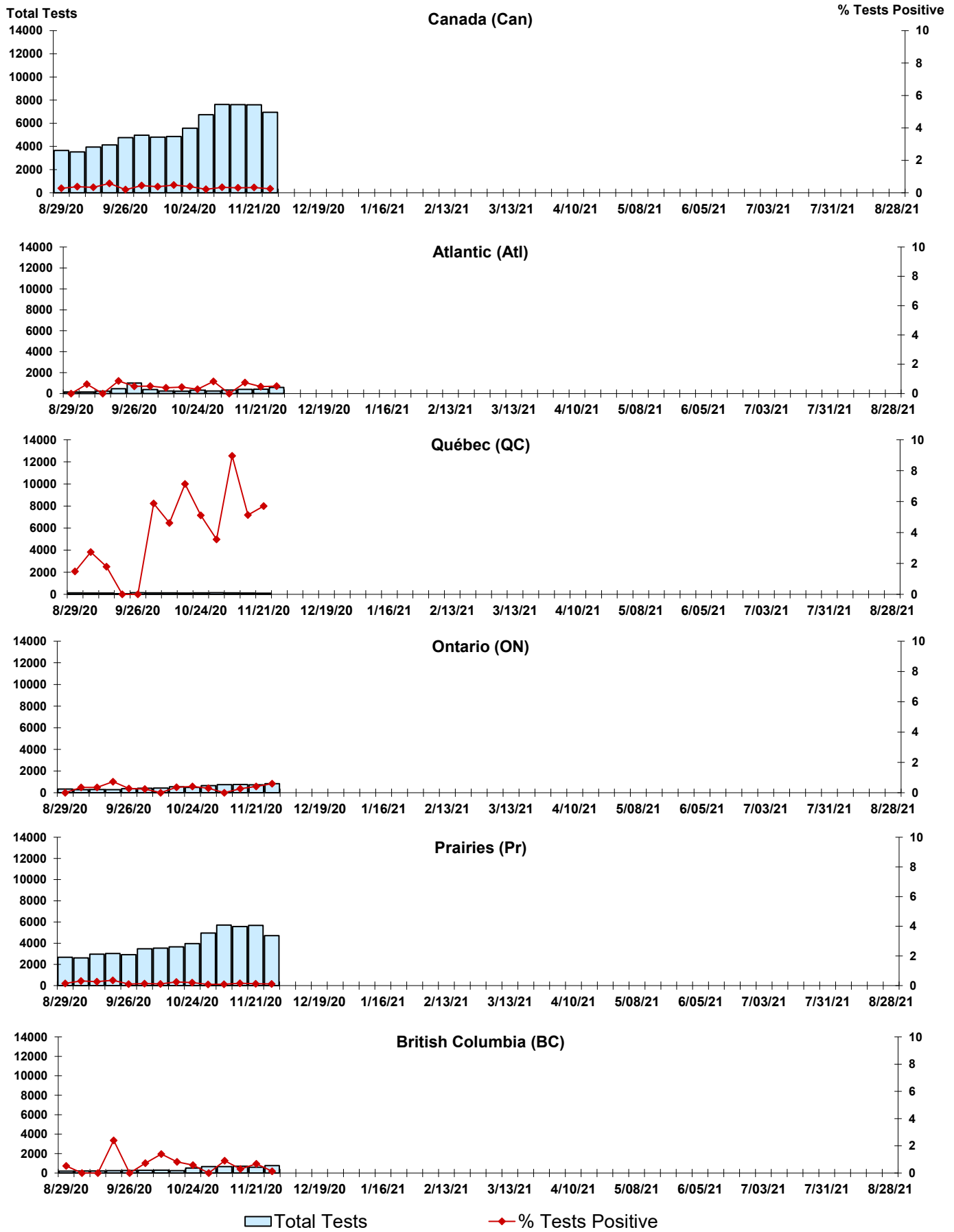
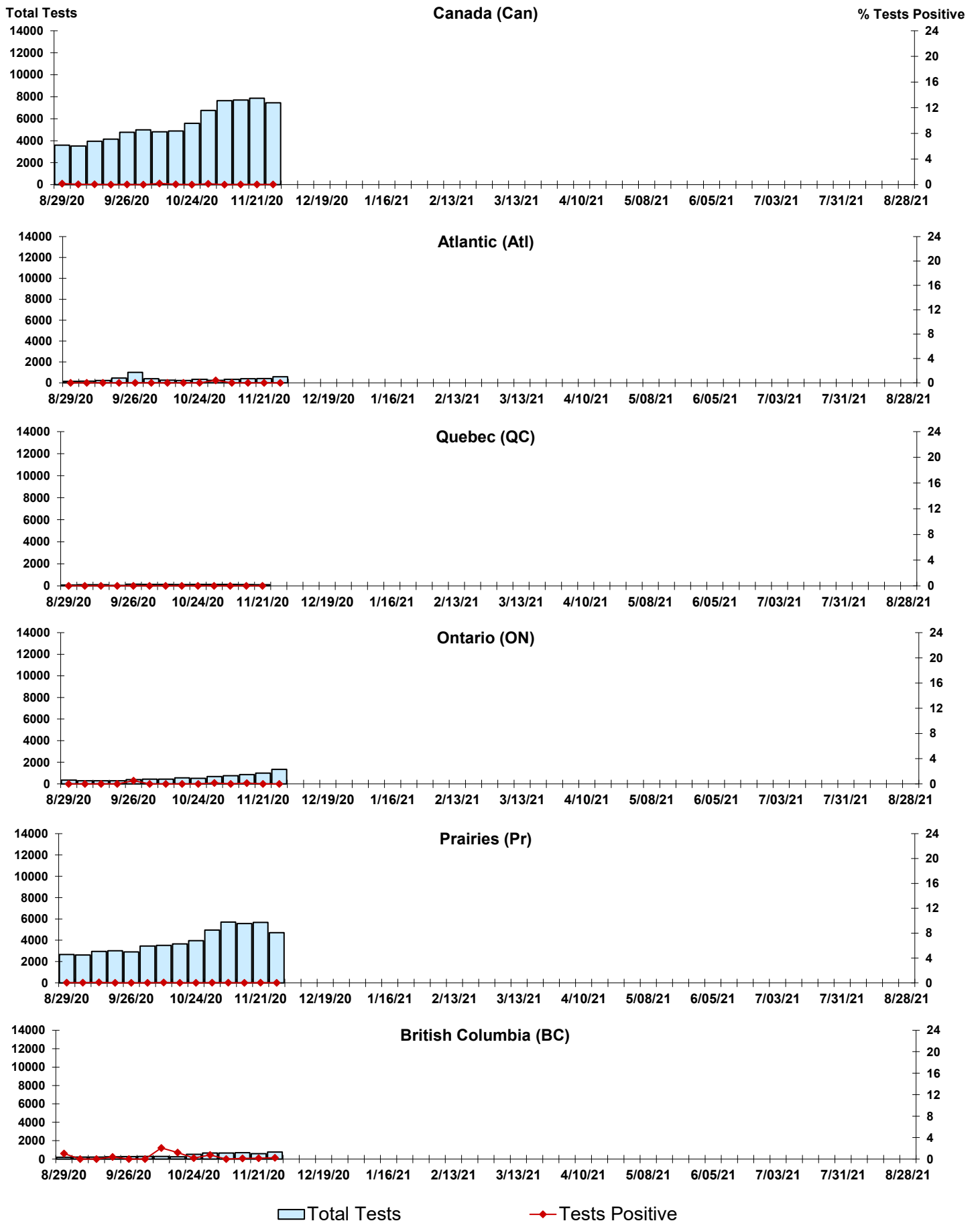


Figure 6: Positive human metapneumovirus (hMPV) Tests (%) in Canada by Region by Week of Report



Legend: Total Tests ◆ Tests Positive

Figure 7: Positive Enterovirus/Rhinovirus (entero/rhino) Tests (%) in Canada by Region by Week of Report

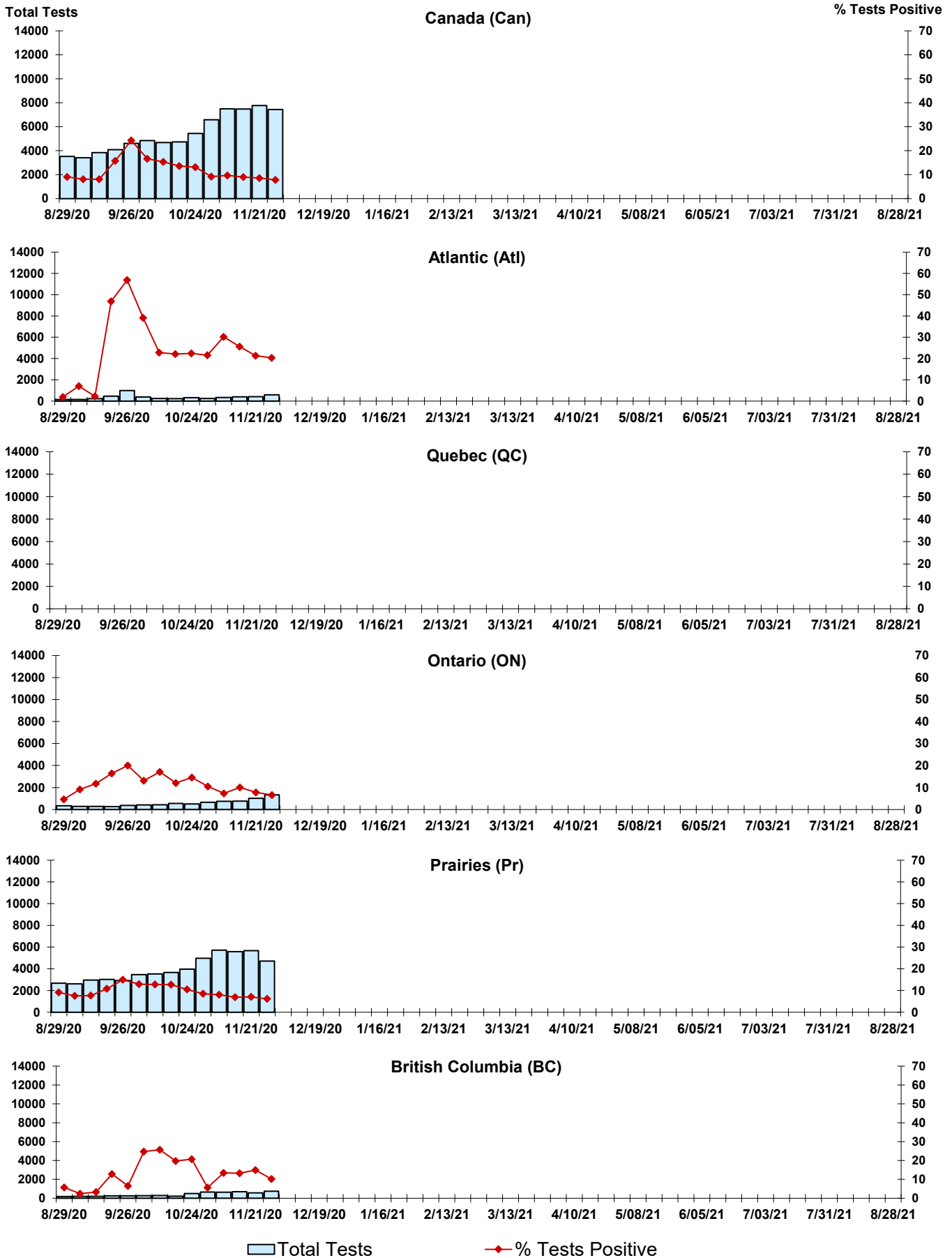
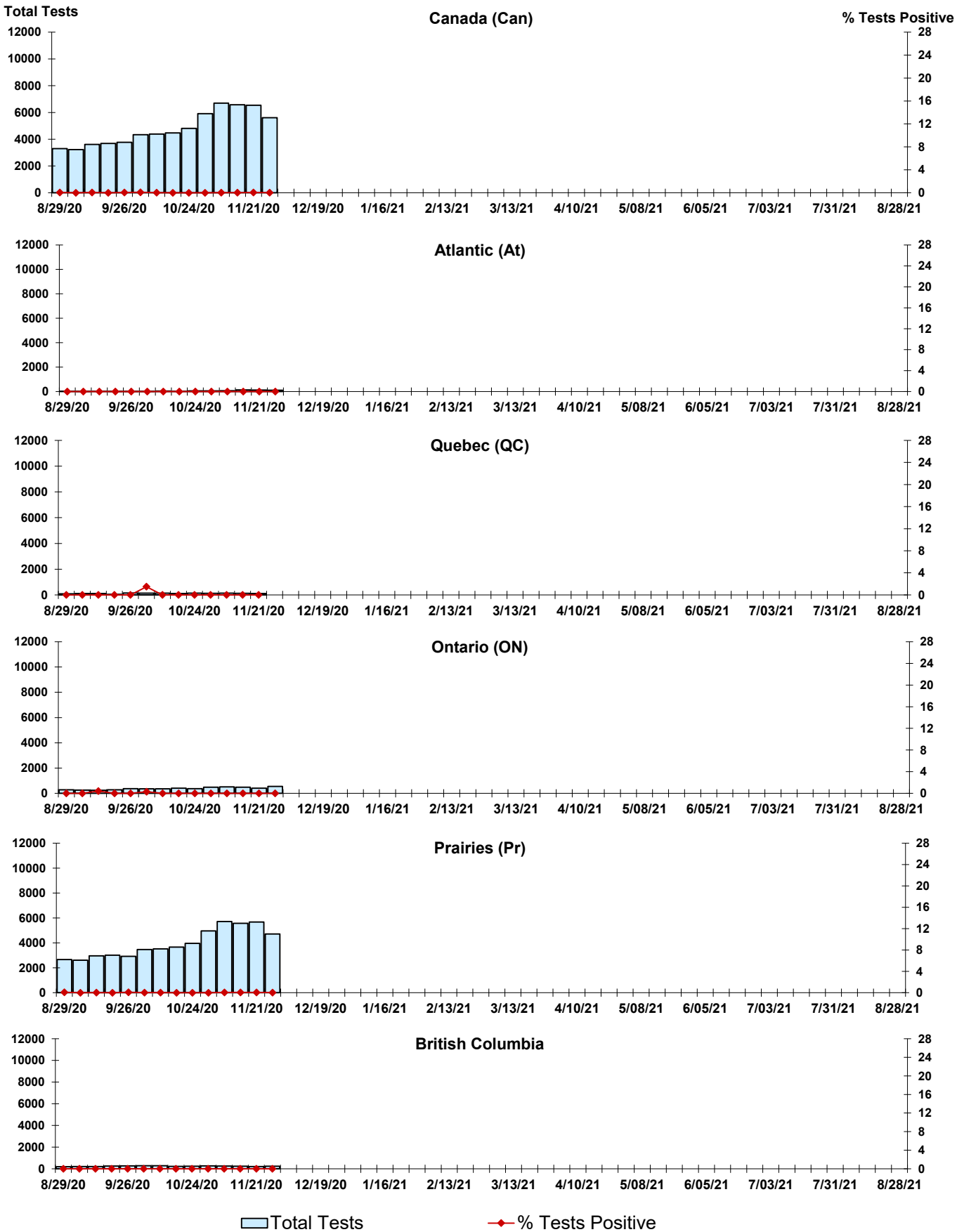


Figure 8: Positive Coronavirus (coron) Tests (%) in Canada by Region by Week of Report



Abbreviations:

A(H1N1)pdm09: Influenza A(H1N1)pdm09

A(H3): Influenza A(H3N2)

A (UnS): Influenza A (Unsubtyped)

Adeno: Adenovirus

CHEO: Children's Hospital of Eastern Ontario

Coron: Coronavirus

Entero: Enterovirus

hMPV: human metapneumovirus

HSC: Health Sciences Centre

N.A.: Not Applicable

P.H.L.: Public Health Laboratory

P.H.O.L.: Public Health Ontario Laboratory

PIV: Parainfluenza

Rhino: Rhinovirus

RSV: Respiratory syncytial virus

UHN: University Health Network

Notes:

The data in the RVDSS report represent surveillance data available at the time of writing. Missing data are denoted by N.A.

Specimens from Yukon (YT), Northwest Territories (NT) and Nunavut (NU) are sent to reference laboratories in other provinces. Results reported for the Territories reflect the number of specimens that are identified as originating from YT, NT or NU.

Delays in the reporting of data may cause data to change retrospectively.

Due to reporting delays, the sum of weekly report totals do not add up to cumulative totals.