

# Respiratory Virus Report, Week 52 - ending December 26, 2020

The Respiratory Virus Detection Surveillance System collects data from select laboratories across Canada on the number of tests performed and the number of tests positive for influenza and other respiratory viruses. Data are reported on a weekly basis year-round to the Centre for Immunization and Respiratory Infectious Diseases (CIRID), Public Health Agency of Canada. These data are also summarized in the weekly FluWatch report.

In this Respiratory Virus Report, the number of detections of coronavirus reflects only seasonal human coronaviruses, not the novel pandemic coronavirus (SARS-CoV2) that causes COVID-19. For information on COVID-19, see the [Coronavirus disease \(COVID-19\): Outbreak](#)

**Table 1: Respiratory Virus Detections/Isolations for the week ending December 26, 2020 (Reporting Week 202052)**

Reporting Laboratory	Flu Tested	A(H1N1)pdm09 Positive	A(H3) Positive	A(UnS) Positive	Total Flu A Positive	Total Flu B Positive	RSV Tested	RSV Positive	PIV Tested	PIV 1 Positive	PIV 2 Positive	PIV 3 Positive	PIV 4 Positive	Other PIV Positive	Adeno Tested	Adeno Positive	hMPV Tested	hMPV Positive	Entero/Rhino Tested	Entero/Rhino Positive	Coron Tested	Coron Positive
Newfoundland	274	0	0	0	0	0	274	0	274	0	0	0	0	0	274	2	274	0	274	53	N.A.	N.A.
Prince Edward Island	80	0	0	0	0	0	80	0	80	0	0	0	0	0	80	1	80	0	80	16	80	0
Nova Scotia	93	0	0	0	0	0	93	0	11	0	0	0	0	0	11	0	11	0	11	0	11	0
New Brunswick	1826	0	0	0	0	0	322	0	38	0	0	0	0	0	38	0	38	0	38	0	38	0
<b>Atlantic</b>	<b>2273</b>	<b>0</b>	<b>0</b>	<b>0</b>	<b>0</b>	<b>0</b>	<b>769</b>	<b>0</b>	<b>403</b>	<b>0</b>	<b>0</b>	<b>0</b>	<b>0</b>	<b>0</b>	<b>403</b>	<b>3</b>	<b>403</b>	<b>0</b>	<b>403</b>	<b>69</b>	<b>129</b>	<b>0</b>
Région Nord-Est	178	0	0	0	0	0	29	0	0	0	0	0	0	0	0	0	0	0	N.A.	N.A.	0	0
Québec-Chaudière-Appalaches	29	0	0	0	0	0	38	0	15	0	0	0	0	0	15	0	15	0	N.A.	N.A.	15	0
Centre-du-Québec	58	0	0	0	0	0	58	0	17	0	0	0	0	0	17	2	17	0	N.A.	N.A.	17	0
Montréal-Laval	215	0	0	0	0	0	119	0	73	0	0	0	0	0	73	0	73	0	N.A.	N.A.	73	0
Ouest du Québec	60	0	0	0	0	0	58	0	0	0	0	0	0	0	0	0	0	0	N.A.	N.A.	0	0
Montérégie	0	0	0	0	0	0	0	0	0	0	0	0	0	0	0	0	0	0	N.A.	N.A.	0	0
<b>Province of Québec</b>	<b>540</b>	<b>0</b>	<b>0</b>	<b>0</b>	<b>0</b>	<b>0</b>	<b>302</b>	<b>0</b>	<b>105</b>	<b>0</b>	<b>0</b>	<b>0</b>	<b>0</b>	<b>0</b>	<b>105</b>	<b>2</b>	<b>105</b>	<b>0</b>	<b>N.A.</b>	<b>N.A.</b>	<b>105</b>	<b>0</b>
P.H.O.L. - Ottawa	18	0	0	0	0	0	18	0	18	0	0	0	0	0	18	0	18	0	18	3	18	0
CHEO - Ottawa	136	0	0	0	0	0	136	0	23	0	0	0	0	0	23	1	23	0	23	2	23	0
P.H.O.L. - Kingston	61	0	0	0	0	0	61	0	21	0	0	0	0	0	21	0	21	0	21	7	21	0
UHN / Mount Sinai Hospital	536	0	0	0	0	0	536	1	546	0	0	0	0	0	546	0	546	0	546	6	546	0
P.H.O.L. - Toronto	196	0	0	0	0	0	196	0	196	0	0	0	0	0	196	1	196	0	196	5	196	0
Sick Kids Hospital - Toronto	0	0	0	0	0	0	0	0	0	0	0	0	0	0	0	0	0	0	0	0	0	0
Sunnybrook & Women's College HSC	0	0	0	0	0	0	0	0	0	0	0	0	0	0	0	0	0	0	0	0	0	0
P.H.O.L. - Sault Ste. Marie	4	0	0	0	0	0	4	0	3	0	0	0	0	0	3	0	3	0	3	0	3	0
P.H.O.L. - Timmins	41	0	0	0	0	0	41	0	1	0	0	0	0	0	1	0	1	0	1	0	1	0
St. Joseph's - London	0	0	0	0	0	0	0	0	0	0	0	0	0	0	0	0	0	0	0	0	0	0
P.H.O.L. - London	64	0	0	0	0	0	64	0	61	0	0	0	0	0	61	0	61	0	61	5	61	0
P.H.O.L. - Orillia	16	0	0	0	0	0	16	0	16	0	0	0	0	0	16	1	16	0	16	0	16	0
P.H.O.L. - Thunder Bay	3	0	0	0	0	0	3	0	3	0	0	0	0	0	3	0	3	0	3	0	3	0
P.H.O.L. - Sudbury	31	0	0	0	0	0	31	0	31	0	0	0	0	0	31	0	31	0	31	6	31	0
P.H.O.L. - Hamilton	45	0	0	0	0	0	45	0	41	0	0	0	0	0	41	0	41	0	41	4	41	0
P.H.O.L. - Peterborough	11	0	0	0	0	0	11	0	10	0	0	0	0	0	10	0	10	0	10	0	10	0
St. Joseph's - Hamilton	497	0	0	0	0	0	497	0	497	0	0	0	0	0	497	1	497	0	497	30	0	0
<b>Province of Ontario</b>	<b>1659</b>	<b>0</b>	<b>0</b>	<b>0</b>	<b>0</b>	<b>0</b>	<b>1659</b>	<b>1</b>	<b>1467</b>	<b>0</b>	<b>0</b>	<b>0</b>	<b>0</b>	<b>0</b>	<b>1467</b>	<b>4</b>	<b>1467</b>	<b>0</b>	<b>1467</b>	<b>68</b>	<b>970</b>	<b>0</b>
Province of Manitoba	1404	0	0	0	0	0	1404	0	65	0	0	0	0	0	65	0	61	0	65	0	61	0
Province of Saskatchewan	225	0	0	0	0	0	225	0	42	0	0	1	0	0	42	0	42	0	42	3	42	0
Province of Alberta	3448	0	0	0	0	0	1060	0	1060	0	0	0	0	0	1060	4	1060	0	1060	51	1060	0
<b>Prairies</b>	<b>5077</b>	<b>0</b>	<b>0</b>	<b>0</b>	<b>0</b>	<b>0</b>	<b>2689</b>	<b>0</b>	<b>1167</b>	<b>0</b>	<b>0</b>	<b>1</b>	<b>0</b>	<b>0</b>	<b>1167</b>	<b>4</b>	<b>1163</b>	<b>0</b>	<b>1167</b>	<b>54</b>	<b>1163</b>	<b>0</b>
<b>British Columbia</b>	<b>2413</b>	<b>0</b>	<b>0</b>	<b>0</b>	<b>0</b>	<b>0</b>	<b>2413</b>	<b>0</b>	<b>493</b>	<b>0</b>	<b>0</b>	<b>0</b>	<b>0</b>	<b>0</b>	<b>493</b>	<b>3</b>	<b>493</b>	<b>4</b>	<b>481</b>	<b>33</b>	<b>394</b>	<b>2</b>
Yukon	0	0	0	0	0	0	0	0	N.A.	N.A.	N.A.	N.A.	N.A.	N.A.	N.A.	N.A.	N.A.	N.A.	N.A.	N.A.	N.A.	N.A.
Northwest Territories	18	0	0	0	0	0	18	0	18	0	0	0	0	0	18	0	18	0	18	9	18	0
Nunavut	3	0	0	0	0	0	1	0	1	0	0	0	0	0	1	0	1	0	1	0	1	0
<b>Territories</b>	<b>21</b>	<b>0</b>	<b>0</b>	<b>0</b>	<b>0</b>	<b>0</b>	<b>19</b>	<b>0</b>	<b>19</b>	<b>0</b>	<b>0</b>	<b>0</b>	<b>0</b>	<b>0</b>	<b>19</b>	<b>0</b>	<b>19</b>	<b>0</b>	<b>19</b>	<b>9</b>	<b>19</b>	<b>0</b>
<b>CANADA</b>	<b>11983</b>	<b>0</b>	<b>0</b>	<b>0</b>	<b>0</b>	<b>0</b>	<b>7851</b>	<b>1</b>	<b>3654</b>	<b>0</b>	<b>0</b>	<b>1</b>	<b>0</b>	<b>0</b>	<b>3654</b>	<b>16</b>	<b>3650</b>	<b>4</b>	<b>3537</b>	<b>233</b>	<b>2780</b>	<b>2</b>

The data in the RVDSS report represent surveillance data available at the time of writing. Missing data are denoted by N.A.

Specimens from Yukon (YT), Northwest Territories (NT) and Nunavut (NU) are sent to reference laboratories in other provinces and reported results reflect specimens identified as originating from YT, NT or NU.

Results from British Columbia comprise of specimens from the following sites: BC Children's and Women's Hospital, Fraser Health Medical Microbiology Laboratory, Island Health, Providence Health Care, Powell River Hospital, St. Paul's Hospital, Vancouver General Hospital, Victoria General Hospital, BCCDC Public Health Laboratory, Interior Health Authority sites and Northern Health Authority sites.

Delays in the reporting of data may cause data to change retrospectively.

**Table 2: Respiratory Virus Detections/Isolations for the period August 23, 2020 - December 26, 2020 (Reporting Weeks 202035-202052)**

Reporting Laboratory	Flu Tested	A(H1N1)pdm09 Positive	A(H3) Positive	A(UnS) Positive	Total Flu A Positive	Total Flu B Positive	RSV Tested	RSV Positive	PIV Tested	PIV 1 Positive	PIV 2 Positive	PIV 3 Positive	PIV 4 Positive	Other PIV Positive	Adeno Tested	Adeno Positive	hMPV Tested	hMPV Positive	Entero/Rhino Tested	Entero/Rhino Positive	Coron Tested	Coron Positive
Newfoundland	5745	0	0	0	0	0	5745	6	5745	1	0	1	0	0	5748	22	5745	1	5745	1663	N.A.	N.A.
Prince Edward Island	709	0	0	0	0	0	709	2	705	2	0	0	0	0	705	7	705	0	705	132	705	0
Nova Scotia	749	0	0	0	0	0	751	0	260	0	0	0	0	0	260	3	260	0	260	43	260	0
New Brunswick	18448	0	0	0	0	1	6876	0	347	0	0	0	0	0	338	4	338	0	338	40	293	0
<b>Atlantic</b>	<b>25651</b>	<b>0</b>	<b>0</b>	<b>0</b>	<b>0</b>	<b>1</b>	<b>14081</b>	<b>8</b>	<b>7057</b>	<b>3</b>	<b>0</b>	<b>1</b>	<b>0</b>	<b>0</b>	<b>7051</b>	<b>36</b>	<b>7048</b>	<b>1</b>	<b>7048</b>	<b>1878</b>	<b>1258</b>	<b>0</b>
Région Nord-Est	1088	0	0	0	0	0	539	1	0	0	0	0	0	0	0	0	0	0	N.A.	N.A.	0	0
Québec-Chaudière-Appalaches	396	0	0	1	1	0	443	0	275	0	0	0	0	0	277	15	272	0	N.A.	N.A.	255	0
Centre-du-Québec	384	0	0	0	0	0	389	1	140	0	0	0	0	0	138	10	140	0	N.A.	N.A.	137	0
Montréal-Laval	2828	0	0	0	0	0	2613	1	1878	0	0	0	0	0	1932	74	1868	0	N.A.	N.A.	1868	3
Ouest du Québec	503	0	0	0	0	0	469	0	0	0	0	0	0	0	0	0	0	0	N.A.	N.A.	0	0
Montérégie	0	0	0	0	0	0	0	0	0	0	0	0	0	0	0	0	0	0	N.A.	N.A.	0	0
<b>Province of Québec</b>	<b>5199</b>	<b>0</b>	<b>0</b>	<b>1</b>	<b>1</b>	<b>0</b>	<b>4453</b>	<b>3</b>	<b>2293</b>	<b>0</b>	<b>0</b>	<b>0</b>	<b>0</b>	<b>0</b>	<b>2347</b>	<b>99</b>	<b>2280</b>	<b>0</b>	<b>N.A.</b>	<b>N.A.</b>	<b>2260</b>	<b>3</b>
P.H.O.L. - Ottawa	282	0	0	0	0	0	282	1	273	0	0	0	0	0	273	0	272	0	273	16	272	0
CHEO - Ottawa	2358	0	0	1	1	1	1955	4	391	0	0	0	0	0	391	5	391	0	391	38	391	0
P.H.O.L. - Kingston	536	0	0	1	1	0	536	0	397	0	0	0	0	0	397	2	393	0	397	101	393	0
UHN / Mount Sinai Hospital	3525	1	0	0	1	1	3525	2	3262	0	2	1	2	0	1636	3	3222	5	3019	51	1058	1
P.H.O.L. - Toronto	3087	0	0	0	0	0	3084	2	3083	0	0	0	0	2	3084	9	3082	0	3083	129	3082	2
Sick Kids Hospital - Toronto	0	0	0	0	0	0	0	0	0	0	0	0	0	0	0	0	0	0	0	0	0	0
Sunnybrook & Women's College HSC	0	0	0	0	0	0	0	0	0	0	0	0	0	0	0	0	0	0	0	0	0	0
P.H.O.L. - Sault Ste. Marie	77	0	0	2	2	0	75	0	73	0	0	0	0	0	73	0	73	0	73	3	73	0
P.H.O.L. - Timmins	336	0	0	0	0	0	336	0	119	0	0	0	0	0	119	0	118	0	119	26	118	0
St. Joseph's - London	218	0	0	0	0	0	218	0	55	0	0	0	0	0	55	0	55	0	91	8	36	0
P.H.O.L. - London	1127	1	0	5	6	2	1117	0	1026	0	0	0	0	2	1026	2	1022	0	1026	118	1022	0
P.H.O.L. - Orillia	182	0	0	1	1	0	180	0	178	0	0	0	0	0	178	1	178	0	178	12	178	0
P.H.O.L. - Thunder Bay	306	0	0	0	0	0	306	0	306	0	0	0	0	0	307	2	306	0	306	125	306	0
P.H.O.L. - Sudbury	261	0	0	0	0	0	259	0	257	0	0	0	0	0	257	1	257	0	257	25	257	0
P.H.O.L. - Hamilton	962	0	0	0	0	0	919	1	869	0	0	0	0	0	869	2	869	0	869	88	869	0
P.H.O.L. - Peterborough	280	0	0	1	1	0	234	0	221	0	0	0	0	0	221	0	221	0	221	18	221	0
St. Joseph's - Hamilton	3616	0	0	0	0	0	3616	0	3616	0	0	0	0	0	3616	14	3616	0	3616	322	0	0
<b>Province of Ontario</b>	<b>17153</b>	<b>2</b>	<b>0</b>	<b>11</b>	<b>13</b>	<b>4</b>	<b>16642</b>	<b>10</b>	<b>14126</b>	<b>0</b>	<b>2</b>	<b>1</b>	<b>2</b>	<b>4</b>	<b>12502</b>	<b>41</b>	<b>14075</b>	<b>5</b>	<b>13919</b>	<b>1080</b>	<b>8276</b>	<b>3</b>
Manitoba	21202	0	0	0	0	1	21202	48	1710	0	1	1	0	0	1710	12	1613	1	1710	114	1613	1
Province of Saskatchewan	2352	0	0	0	0	0	2352	2	1037	0	0	1	0	0	1037	8	1037	0	1037	118	1037	0
Province of Alberta	73040	0	0	3	3	0	61732	0	61732	2	17	1	3	0	61732	94	61732	10	61732	5437	61732	17
<b>Prairies</b>	<b>96594</b>	<b>0</b>	<b>0</b>	<b>3</b>	<b>3</b>	<b>1</b>	<b>85286</b>	<b>50</b>	<b>64479</b>	<b>2</b>	<b>18</b>	<b>3</b>	<b>3</b>	<b>0</b>	<b>64479</b>	<b>114</b>	<b>64382</b>	<b>11</b>	<b>64479</b>	<b>5669</b>	<b>64382</b>	<b>18</b>
<b>British Columbia</b>	<b>30040</b>	<b>1</b>	<b>2</b>	<b>4</b>	<b>7</b>	<b>5</b>	<b>30037</b>	<b>5</b>	<b>8263</b>	<b>0</b>	<b>2</b>	<b>0</b>	<b>3</b>	<b>0</b>	<b>8729</b>	<b>43</b>	<b>8729</b>	<b>29</b>	<b>8573</b>	<b>908</b>	<b>4890</b>	<b>5</b>
Yukon	3404	0	0	8	8	7	3357	4	N.A.	N.A.	N.A.	N.A.	N.A.	N.A.	N.A.	N.A.	N.A.	N.A.	N.A.	N.A.	N.A.	N.A.
Northwest Territories	778	0	0	0	0	0	776	0	776	0	0	0	1	0	776	6	776	1	776	252	776	0
Nunavut	1070	0	0	0	0	0	1067	0	1067	3	1	0	0	0	1067	25	1067	5	1067	277	174	0
<b>Territories</b>	<b>5252</b>	<b>0</b>	<b>0</b>	<b>8</b>	<b>8</b>	<b>7</b>	<b>5200</b>	<b>4</b>	<b>1843</b>	<b>3</b>	<b>1</b>	<b>0</b>	<b>1</b>	<b>0</b>	<b>1843</b>	<b>31</b>	<b>1843</b>	<b>6</b>	<b>1843</b>	<b>529</b>	<b>950</b>	<b>0</b>
<b>CANADA</b>	<b>179889</b>	<b>3</b>	<b>2</b>	<b>27</b>	<b>32</b>	<b>18</b>	<b>155699</b>	<b>80</b>	<b>98061</b>	<b>8</b>	<b>23</b>	<b>5</b>	<b>9</b>	<b>4</b>	<b>96951</b>	<b>364</b>	<b>98357</b>	<b>52</b>	<b>95862</b>	<b>10064</b>	<b>82016</b>	<b>29</b>

The data in the RVDSS report represent surveillance data available at the time of writing. Missing data are denoted by N.A.

Specimens from YT, NT and NU are sent to reference laboratories in other provinces and reported results reflect specimens identified as originating from YT, NT or NU.

Results from British Columbia comprise of specimens from the following sites: BC Children's and Women's Hospital, Children's and Women's Hospital Laboratory, Fraser Health Medical Microbiology Laboratory, Island Health, Providence Health Care, Powell River Hospital, St. Paul's Hospital, Vancouver General Hospital, Victoria General Hospital, BCCDC Public Health Laboratory, Interior Health Authority sites and Northern Health Authority sites.

Delays in the reporting of data may cause data to change retrospectively.

Due to reporting delays, the sum of weekly report totals do not add up to cumulative totals.

Figure 1: Number positive laboratory tests for other respiratory viruses by report week, Canada, 2020-21

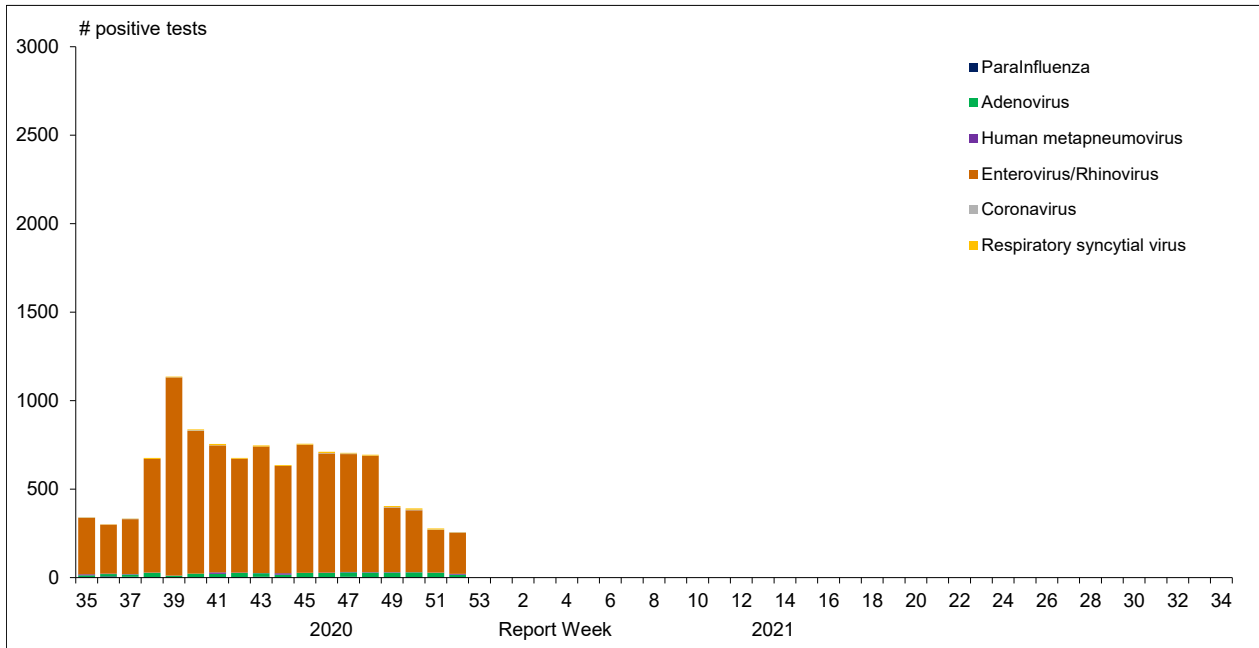


Figure 2 : Positive Influenza Tests (%) in Canada by Region by Week of Report

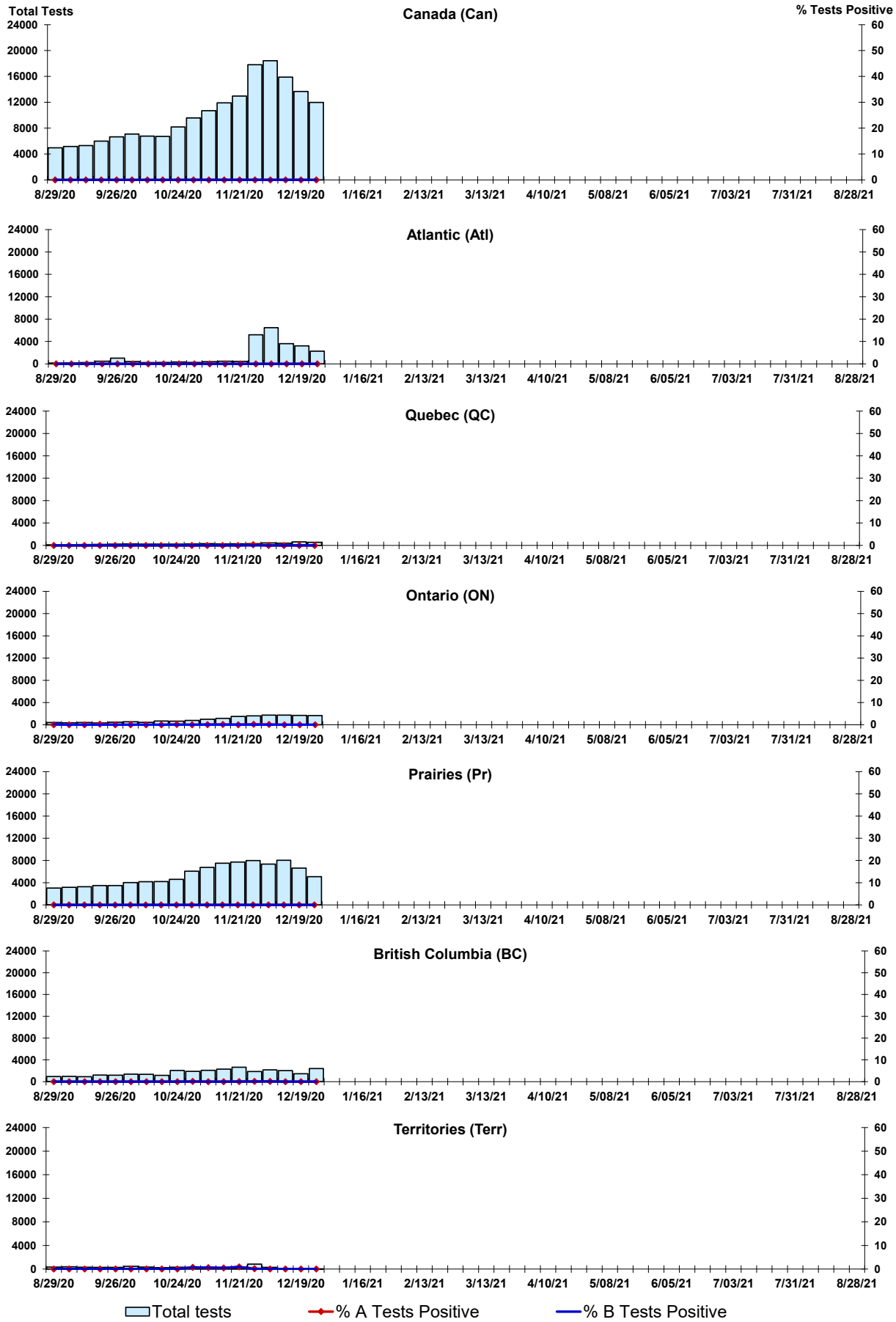


Figure 3: Positive Respiratory syncytial virus (RSV) Tests (%) in Canada by Region by Week of Report

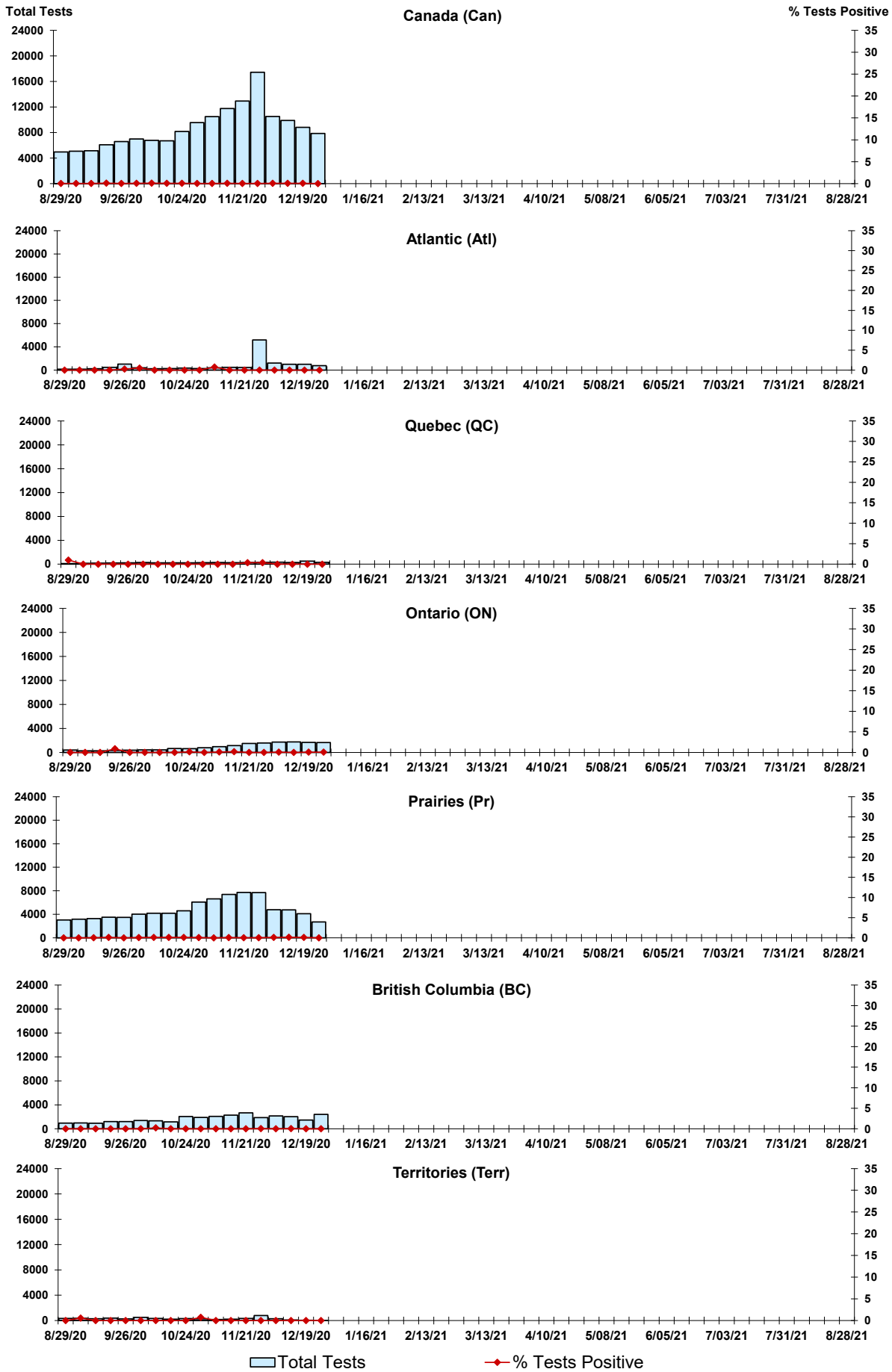
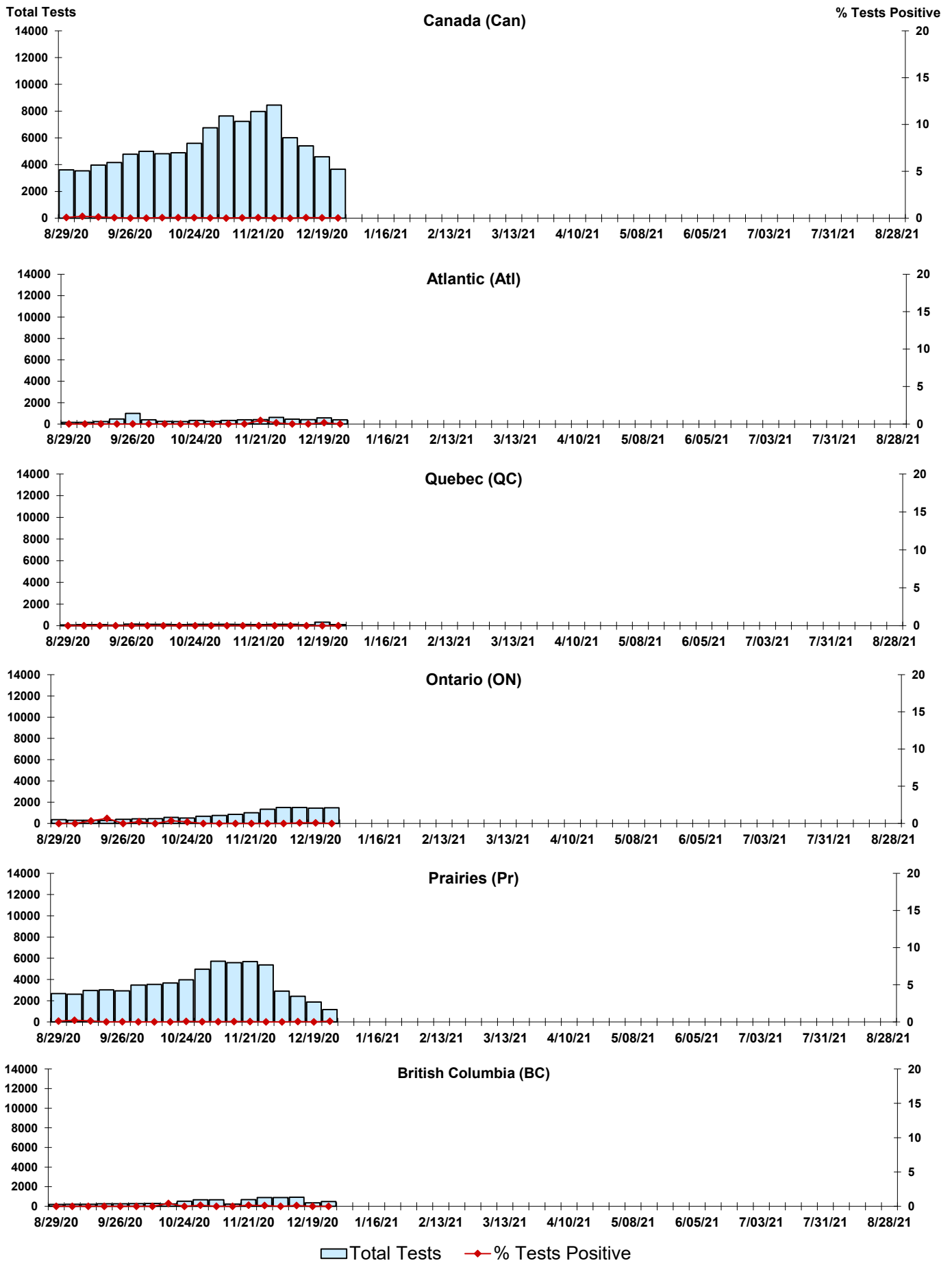


Figure 4: Positive Parainfluenza (PIV) Tests (%) in Canada by Region by Week of Report



Legend: Total Tests (light blue bar), % Tests Positive (red diamond with line)

Figure 5: Positive Adenovirus (adeno) Tests (%) in Canada by Region by Week of Report

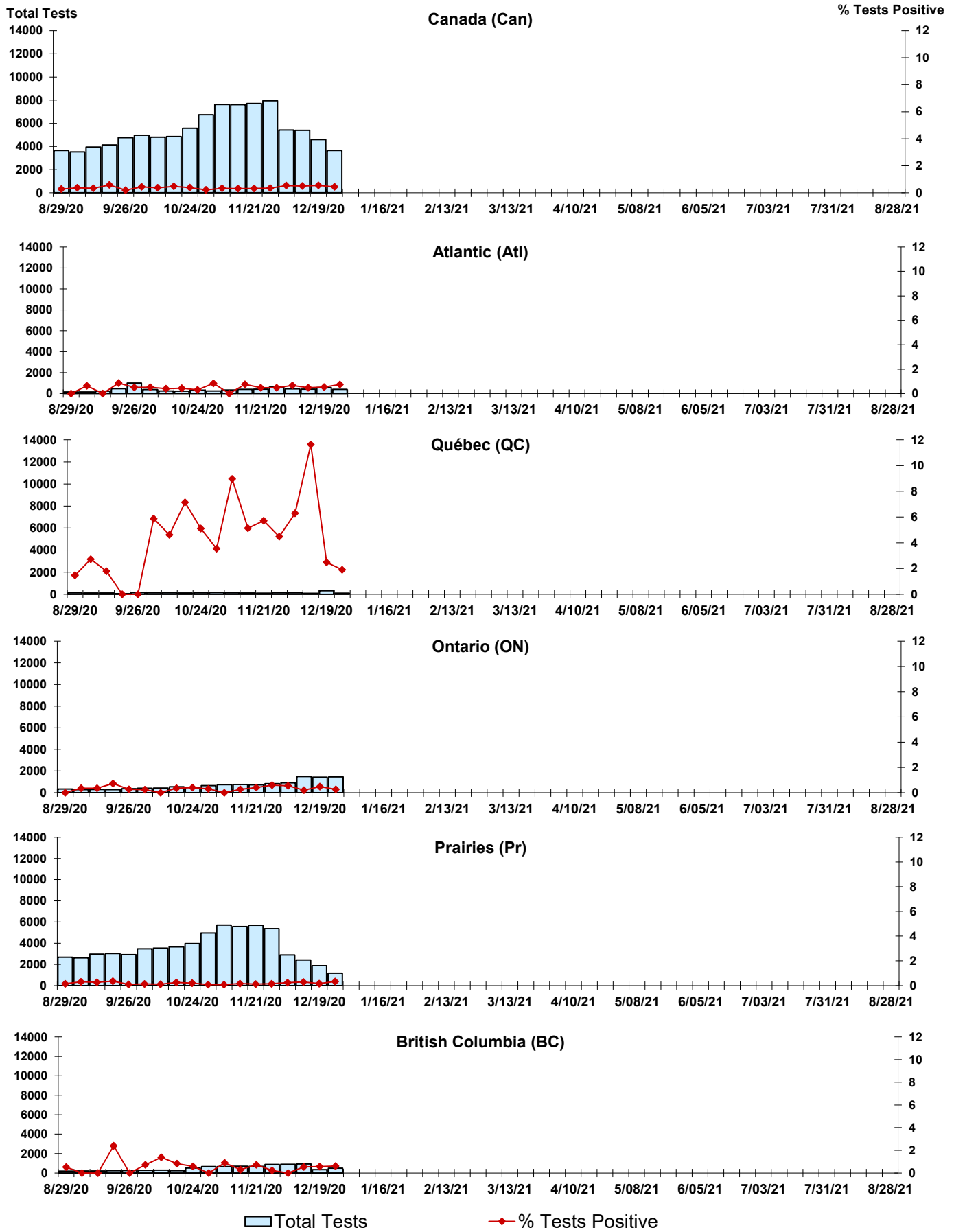


Figure 6: Positive human metapneumovirus (hMPV) Tests (%) in Canada by Region by Week of Report

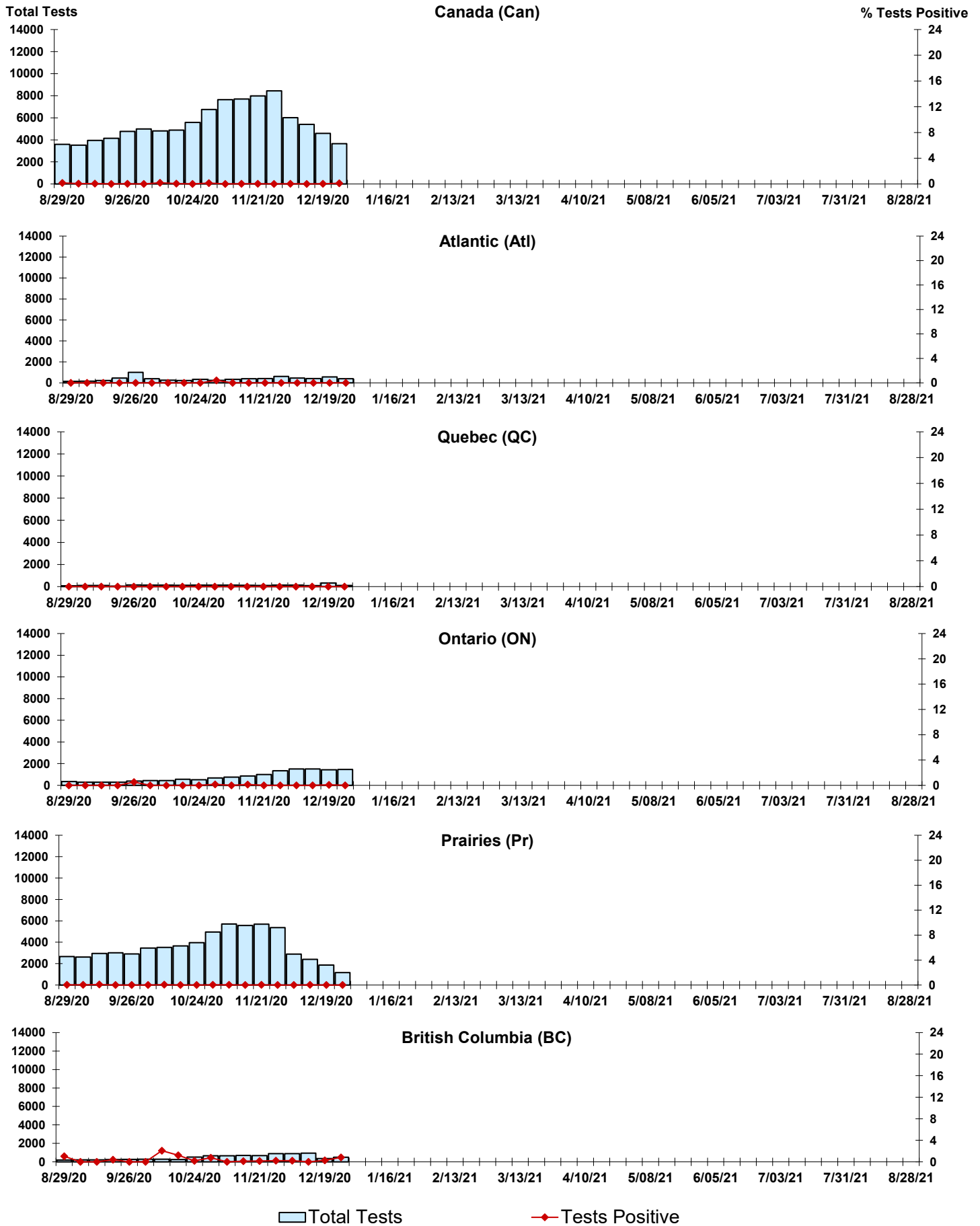




Figure 7: Positive Enterovirus/Rhinovirus (entero/rhino) Tests (%) in Canada by Region by Week of Report

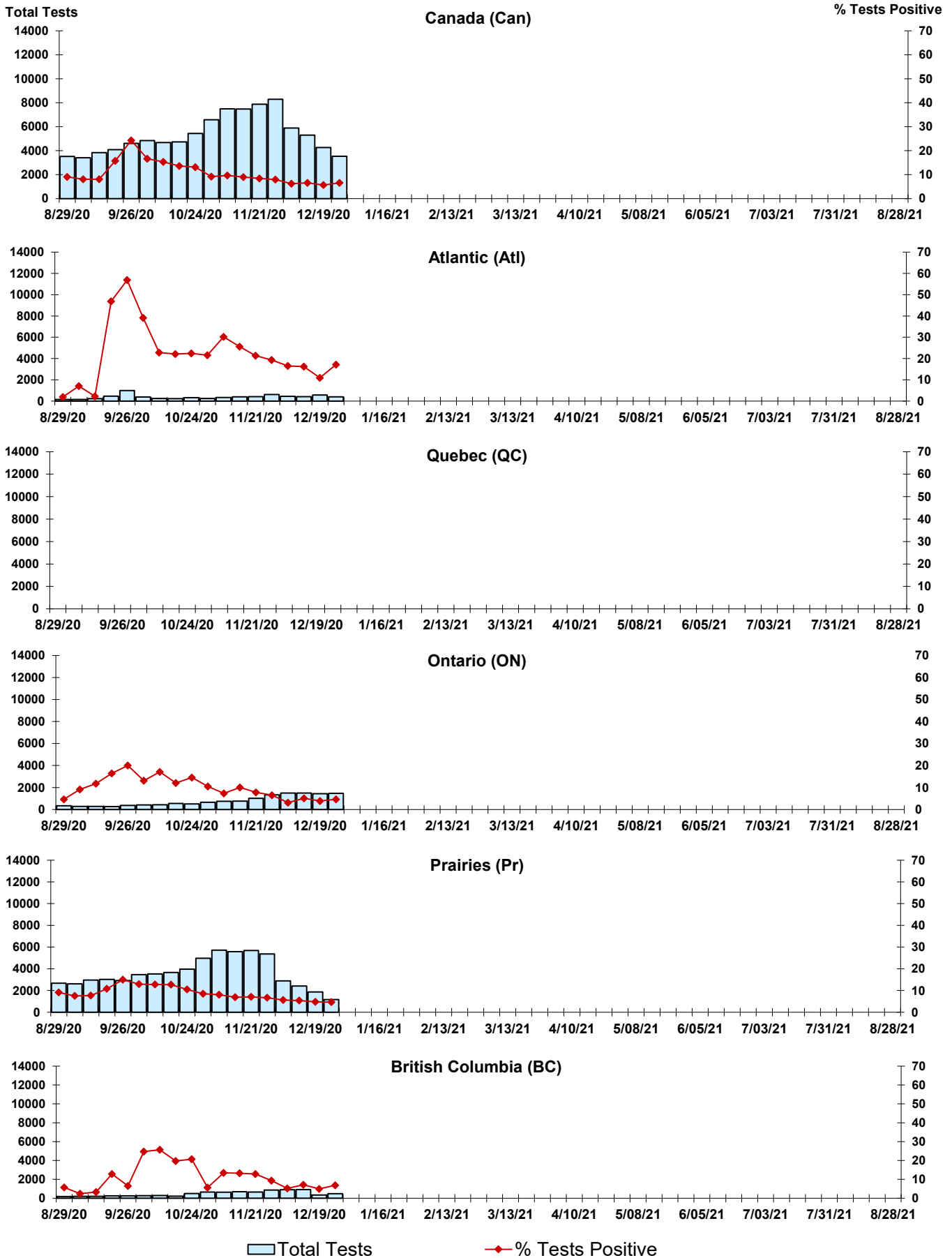
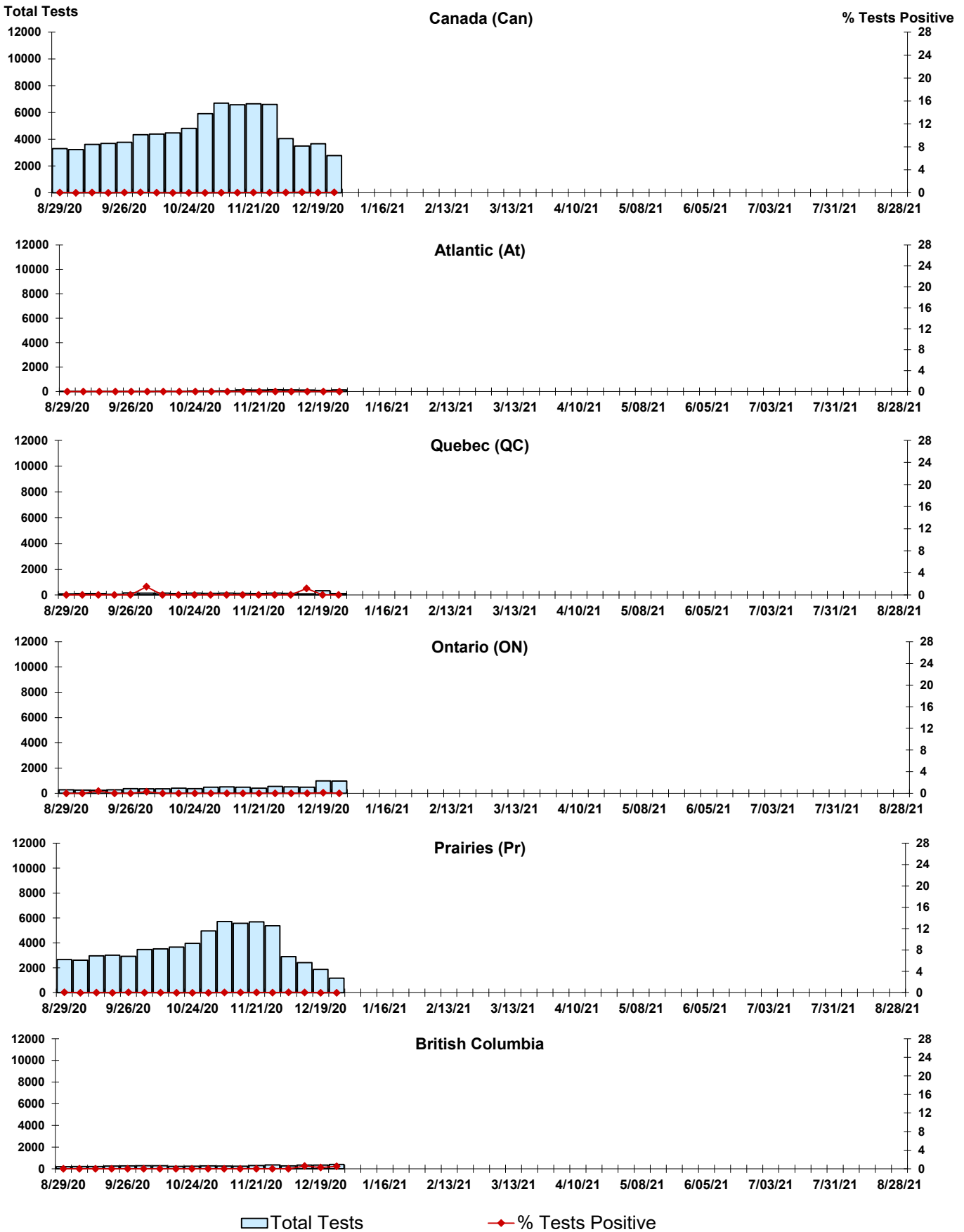


Figure 8: Positive Coronavirus (coron) Tests (%) in Canada by Region by Week of Report



## Abbreviations:

A(H1N1)pdm09: Influenza A(H1N1)pdm09

A(H3): Influenza A(H3N2)

A (UnS): Influenza A (Unsubtyped)

Adeno: Adenovirus

CHEO: Children's Hospital of Eastern Ontario

Coron: Coronavirus

Entero: Enterovirus

hMPV: human metapneumovirus

HSC: Health Sciences Centre

N.A.: Not Applicable

P.H.L.: Public Health Laboratory

P.H.O.L.: Public Health Ontario Laboratory

PIV: Parainfluenza

Rhino: Rhinovirus

RSV: Respiratory syncytial virus

UHN: University Health Network

## Notes:

The data in the RVDSS report represent surveillance data available at the time of writing. Missing data are denoted by N.A.

Specimens from Yukon (YT), Northwest Territories (NT) and Nunavut (NU) are sent to reference laboratories in other provinces. Results reported for the Territories reflect the number of specimens that are identified as originating from YT, NT or NU.

Delays in the reporting of data may cause data to change retrospectively.

Due to reporting delays, the sum of weekly report totals do not add up to cumulative totals.