

Respiratory Virus Detections in Canada

Respiratory Virus Report, Week 09 - ending February 29, 2020

The Respiratory Virus Detection Surveillance System collects data from select laboratories across Canada on the number of tests performed and the number of tests positive for influenza and other respiratory viruses. Data are reported on a weekly basis year-round to the Centre for Immunization and Respiratory Infectious Diseases (CIRID), Public Health Agency of Canada. These data are also summarized in the weekly FluWatch report.

Table 1: Respiratory Virus Detections/Isolations for the week ending February 29, 2020 (Reporting Week 202009)

Reporting Laboratory	Flu Tested	A(H1N1)pdm09 Positive	A(H3) Positive	A(UnS) Positive	Total Flu A Positive	Total Flu B Positive	RSV Tested	RSV Positive	PIV Tested	PIV 1 Positive	PIV 2 Positive	PIV 3 Positive	PIV 4 Positive	Other PIV Positive	Adeno Tested	Adeno Positive	hMPV Tested	hMPV Positive	Entero/Rhino Tested	Entero/Rhino Positive	Coron Tested	Coron Positive
Newfoundland	236	0	1	13	14	64	236	24	236	1	0	0	0	0	236	1	236	18	236	5	N.A.	N.A.
Prince Edward Island	0	0	0	0	0	0	0	0	0	0	0	0	0	0	0	0	0	0	0	0	0	0
Nova Scotia	194	0	0	11	11	19	206	38	3	0	0	0	0	0	20	0	0	0	20	0	20	4
New Brunswick	769	15	2	130	147	158	769	63	95	2	0	0	0	0	95	0	95	2	95	7	95	3
Atlantic	1199	15	3	154	172	241	1211	125	334	3	0	0	0	0	351	1	351	20	351	12	115	7
Région Nord-Est	730	0	0	172	172	114	618	71	0	0	0	0	0	0	0	0	0	0	N.A.	N.A.	0	0
Québec-Chaudière-Appalaches	965	0	0	217	217	138	960	88	94	0	0	0	0	0	95	1	78	1	N.A.	N.A.	78	2
Centre-du-Québec	1109	0	0	245	245	108	853	80	0	0	0	0	0	0	0	0	0	0	N.A.	N.A.	0	0
Montréal-Laval	1610	0	0	273	273	59	1556	135	596	0	0	5	0	0	596	8	596	29	N.A.	N.A.	596	13
Ouest du Québec	655	0	0	139	139	44	574	57	0	0	0	0	0	0	0	0	0	0	N.A.	N.A.	0	0
Montérégie	432	0	0	80	80	26	432	18	0	0	0	0	0	0	0	0	0	0	N.A.	N.A.	0	0
Province of Québec	5501	0	0	1126	1126	489	4993	449	690	0	0	5	0	0	691	9	674	30	N.A.	N.A.	674	15
P.H.O.L. - Ottawa	53	10	1	0	11	3	53	1	53	0	0	0	0	0	53	1	53	3	53	5	53	0
CHEO - Ottawa	323	0	0	39	39	24	323	24	33	2	0	0	0	0	33	0	33	1	33	0	33	0
P.H.O.L. - Kingston	49	10	0	0	10	0	49	5	49	0	0	0	0	0	49	0	49	5	49	8	49	0
UHN / Mount Sinai Hospital	349	0	0	14	14	9	349	14	18	0	0	0	0	0	0	0	18	0	0	0	N.A.	N.A.
P.H.O.L. - Toronto	970	48	6	1	55	44	965	25	965	0	0	0	0	0	965	12	959	27	965	105	959	0
Sick Kids Hospital - Toronto	0	0	0	0	0	0	0	0	0	0	0	0	0	0	0	0	0	0	0	0	0	0
Sunnybrook & Women's College HSC	58	0	0	4	4	2	58	0	58	0	0	0	0	0	58	0	58	0	58	4	0	0
P.H.O.L. - Sault Ste. Marie	15	2	0	0	2	2	15	2	15	0	0	0	0	0	15	0	15	5	15	0	15	0
P.H.O.L. - Timmins	13	2	0	0	2	0	12	0	12	0	0	0	0	0	12	0	11	1	12	0	11	0
St. Joseph's - London	0	0	0	0	0	0	0	0	0	0	0	0	0	0	0	0	0	0	0	0	0	0
P.H.O.L. - London	161	18	7	0	25	9	161	10	161	0	0	0	0	0	161	3	159	5	161	6	159	0
P.H.O.L. - Orillia	47	1	0	0	1	2	47	4	47	0	0	0	0	0	47	0	47	0	47	0	47	0
P.H.O.L. - Thunder Bay	26	6	2	0	8	0	26	3	26	0	0	0	0	0	26	0	24	4	26	0	24	0
P.H.O.L. - Sudbury	18	1	0	0	1	0	18	2	18	0	0	0	0	0	18	0	18	0	18	4	18	0
P.H.O.L. - Hamilton	134	12	1	1	14	8	128	1	128	0	0	0	0	0	128	3	127	6	128	20	127	0
P.H.O.L. - Peterborough	41	5	0	0	5	3	41	0	41	0	0	0	0	0	41	1	40	4	41	0	40	0
St. Joseph's - Hamilton	587	0	0	44	44	53	587	27	587	0	0	3	0	0	587	7	587	23	587	33	0	0
Province of Ontario	2844	115	17	103	235	159	2832	118	2211	2	0	3	0	0	2193	27	2198	84	2193	185	1535	0
Manitoba	654	14	9	136	159	24	633	36	133	3	1	0	0	0	133	1	117	2	133	13	117	13
Saskatchewan	620	0	0	72	72	44	620	95	309	10	0	5	0	0	309	4	309	30	309	32	309	18
Alberta	1289	117	22	89	228	72	925	0	925	6	2	1	2	0	925	11	925	49	925	99	925	39
Prairies	2563	131	31	297	459	140	2178	131	1367	19	3	1	7	0	1367	16	1351	81	1367	144	1351	70
Province of British Columbia	1724	29	0	182	336	179	1715	144	420	4	1	0	2	0	420	3	420	35	400	43	283	24
Yukon	70	0	0	0	3	0	70	0	N.A.	N.A.	N.A.	N.A.	N.A.	N.A.	N.A.	N.A.	N.A.	N.A.	N.A.	N.A.	N.A.	N.A.
Northwest Territories	29	2	1	0	3	10	29	0	29	0	0	1	1	0	29	0	29	0	29	4	29	2
Nunavut	18	0	1	0	1	7	18	2	18	0	0	0	0	0	18	0	18	0	18	1	9	0
Territories	117	2	2	0	7	17	117	2	47	0	0	1	1	0	47	0	47	0	47	5	38	2
CANADA	13948	292	53	1862	2335	1225	13046	969	5069	28	4	10	10	0	5069	56	5041	250	4358	389	3996	118

Specimens from Yukon (YT), Northwest Territories (NT) and Nunavut (NU) are sent to reference laboratories in other provinces and reported results reflect specimens identified as originating from YT, NT or NU.

Results from British Columbia comprise of specimens from the following sites: BC Children's and Women's Hospital, Children's and Women's Hospital Laboratory, Fraser Health Medical Microbiology Laboratory, Island Health, Providence Health Care, Powell River Hospital, St. Paul's Hospital, Vancouver General Hospital, Victoria General Hospital, Victoria Coastal Health, BCCDC Public Health Laboratory, Interior Health Authority sites and Northern Health Authority sites.

Delays in the reporting of data may cause data to change retrospectively.

For British Columbia, only data from subtyped influenza A specimens are included in the weekly number of influenza detections. The sum of A(H1N1)pdm09, A(H3), and A(UnS) positive results may not equal the sum of total Flu A positive results.

Table 2: Respiratory Virus Detections/Isolations for the period August 25, 2019 - February 29, 2020 (Reporting Weeks 201935-202009)

Reporting Laboratory	Flu Tested	A(H1N1)pdm09 Positive	A(H3) Positive	A(UnS) Positive	Total Flu A Positive	Total Flu B Positive	RSV Tested	RSV Positive	PIV Tested	PIV 1 Positive	PIV 2 Positive	PIV 3 Positive	PIV 4 Positive	Other PIV Positive	Adeno Tested	Adeno Positive	hMPV Tested	hMPV Positive	Entero/Rhino Tested	Entero/Rhino Positive	Coron Tested	Coron Positive
Newfoundland	2956	4	32	57	93	243	2956	243	2956	119	1	4	0	0	2956	80	2956	57	2956	295	N.A.	N.A.
Prince Edward Island	771	0	0	76	76	60	771	70	38	1	0	0	1	0	38	0	36	0	38	16	38	0
Nova Scotia	2425	3	2	83	88	142	2498	320	425	13	1	2	5	0	459	8	459	9	459	73	469	11
New Brunswick	8360	51	24	622	697	1058	8301	909	1880	50	3	0	12	0	1880	53	1880	8	1880	271	1880	43
Atlantic	14512	58	58	838	954	1503	14526	1542	5299	183	5	6	18	0	5333	141	5331	74	5333	655	2387	54
Région Nord-Est	6608	0	0	773	773	1209	5656	406	0	0	0	0	0	0	0	0	0	0	N.A.	N.A.	0	0
Québec-Chaudière-Appalaches	11966	0	0	1575	1575	1699	12136	1197	2398	28	4	3	12	0	2446	79	1952	13	N.A.	N.A.	1901	30
Centre-du-Québec	15813	0	0	2519	2519	2310	12743	1165	0	0	0	0	0	0	0	0	0	0	N.A.	N.A.	0	0
Montréal-Laval	32216	0	0	3611	3611	2345	31211	2132	15131	139	4	24	13	0	15131	486	14668	187	N.A.	N.A.	14978	230
Ouest du Québec	10569	0	0	1578	1578	1242	9865	942	0	0	0	0	0	0	0	0	0	0	N.A.	N.A.	0	0
Montérégie	7648	0	0	1018	1018	738	7553	575	0	0	0	0	0	0	0	0	0	0	N.A.	N.A.	0	0
Province of Québec	84820	0	0	11074	11074	9543	79164	6417	17529	167	8	27	25	0	17577	565	16620	200	N.A.	N.A.	16879	260
P.H.O.L. - Ottawa	1046	96	55	2	153	64	1037	60	1012	2	0	0	0	0	1012	13	1001	26	856	61	844	0
CHEO - Ottawa	6133	1	0	573	574	317	6133	590	704	12	0	4	10	5	704	14	704	13	707	139	695	19
P.H.O.L. - Kingston	686	49	18	2	69	14	671	48	667	1	0	0	0	0	667	16	659	31	498	50	486	0
UHN / Mount Sinai Hospital	8595	9	0	617	626	162	8595	302	459	7	2	10	2	0	0	0	457	10	0	0	N.A.	N.A.
P.H.O.L. - Toronto	11595	1255	127	32	1414	271	11159	350	11080	34	0	3	0	0	11080	116	10896	242	8536	536	8332	0
Sick Kids Hospital - Toronto	1755	97	11	82	190	116	1458	195	1458	25	5	5	27	0	1458	37	1458	32	1458	298	1458	64
Sunnybrook & Women's College HSC	1294	0	0	119	119	22	1294	42	1294	8	0	7	0	0	1035	5	1154	12	1154	37	120	0
P.H.O.L. - Sault Ste. Marie	322	14	0	0	14	8	322	15	322	1	0	0	0	0	322	4	320	14	271	13	269	0
P.H.O.L. - Timmins	253	59	3	2	64	10	222	9	224	0	0	0	0	0	224	0	222	11	196	2	192	0
St. Joseph's - London	2726	0	0	215	215	77	2726	284	939	18	4	2	13	0	939	18	939	25	512	89	491	10
P.H.O.L. - London	3088	262	101	3	366	113	3060	202	3045	8	0	0	0	0	3045	38	3014	88	2589	222	2546	0
P.H.O.L. - Orillia	1107	78	27	2	107	30	1107	76	1104	4	0	0	0	0	1104	6	1102	25	913	62	909	0
P.H.O.L. - Thunder Bay	426	59	7	7	73	39	424	15	424	0	0	1	0	0	424	8	413	19	376	28	364	0
P.H.O.L. - Sudbury	476	25	12	4	41	14	471	33	471	0	0	1	0	0	471	9	461	9	399	21	388	0
P.H.O.L. - Hamilton	3144	260	35	7	302	102	3042	131	3023	10	1	0	0	0	3023	61	3004	73	2428	241	2405	0
P.H.O.L. - Peterborough	799	54	4	0	58	9	796	25	795	3	0	0	0	0	794	7	790	31	540	44	533	0
St. Joseph's - Hamilton	9814	0	0	1453	1453	593	9814	1080	9814	108	5	12	0	0	9814	196	9814	185	9814	714	0	0
Province of Ontario	53259	2318	400	3120	5838	1961	52331	3457	36835	241	17	45	52	5	36116	548	36408	846	31247	2557	20032	93
Manitoba	10736	143	111	966	1220	835	10375	749	3143	43	7	4	8	0	3143	52	2143	39	3143	448	2143	56
Saskatchewan	12424	15	2	1291	1308	805	12424	753	8514	236	22	11	32	0	8514	134	8440	151	8514	1253	8514	159
Alberta	29327	1113	1186	1199	3498	3063	22773	0	22773	441	49	37	172	0	22773	374	22773	683	22773	3280	22773	687
Prairies	52487	1271	1299	3456	6026	4703	45572	1502	34430	720	78	52	212	0	34430	560	33356	873	34430	4981	33430	902
Province of British Columbia	26035	249	235	929	2455	1734	25701	1736	7182	181	52	33	45	36	7179	91	7153	398	6668	1300	5585	218
Yukon	1386	4	8	30	45	8	1386	3	N.A.	N.A.	N.A.	N.A.	N.A.	N.A.	N.A.	N.A.	N.A.	N.A.	N.A.	N.A.	N.A.	N.A.
Northwest Territories	716	60	11	1	72	90	705	0	705	12	0	6	13	0	705	16	705	52	705	121	705	49
Nunavut	358	3	6	36	45	30	355	15	355	16	3	1	4	0	355	15	355	2	355	81	90	5
Territories	2460	67	25	67	162	128	2446	18	1060	28	3	7	17	0	1060	31	1060	54	1060	202	795	54
CANADA	233573	3963	2017	19484	26509	19572	219740	14672	102335	1520	163	170	369	41	101695	1936	99928	2445	78738	9695	79108	1581

Specimens from YT, NT and NU are sent to reference laboratories in other provinces and reported results reflect specimens identified as originating from YT, NT or NU.

Results from British Columbia comprise of specimens from the following sites: BC Children's and Women's Hospital, Children's and Women's Hospital Laboratory, Fraser Health Medical Microbiology Laboratory, Island Health, Providence Health Care, Powell River Hospital, St. Paul's Hospital, Vancouver General Hospital, Victoria General Hospital, Victoria Coastal Health, BCCDC Public Health Laboratory, Interior Health Authority sites and Northern Health Authority sites.

Delays in the reporting of data may cause data to change retrospectively.

Due to reporting delays, the sum of weekly report totals do not add up to cumulative totals.

For BC, only data from subtyped influenza A specimens are included in the weekly number of influenza detections. The sum of A(H1N1)pdm09, A(H3), and A(UnS) positive results may not equal the sum of total Flu A positive results.

Figure 1: Number positive laboratory tests for other respiratory viruses by report week, Canada, 2019-2020

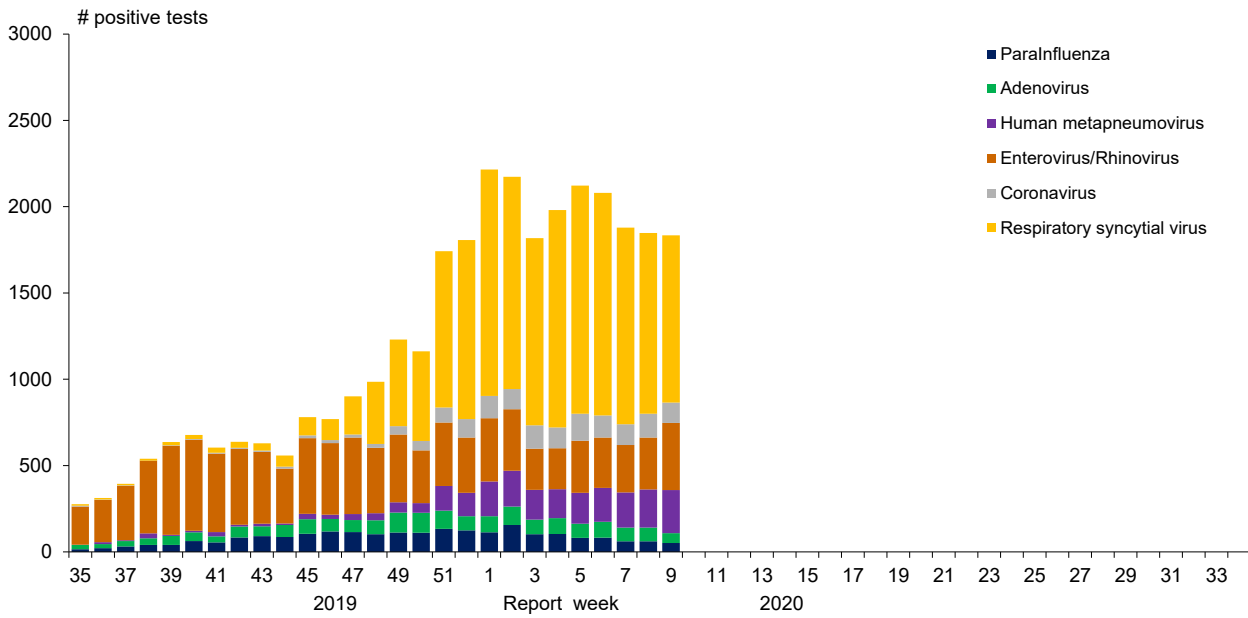


Figure 2: Positive Influenza Tests (%) in Canada by Region by Week of Report

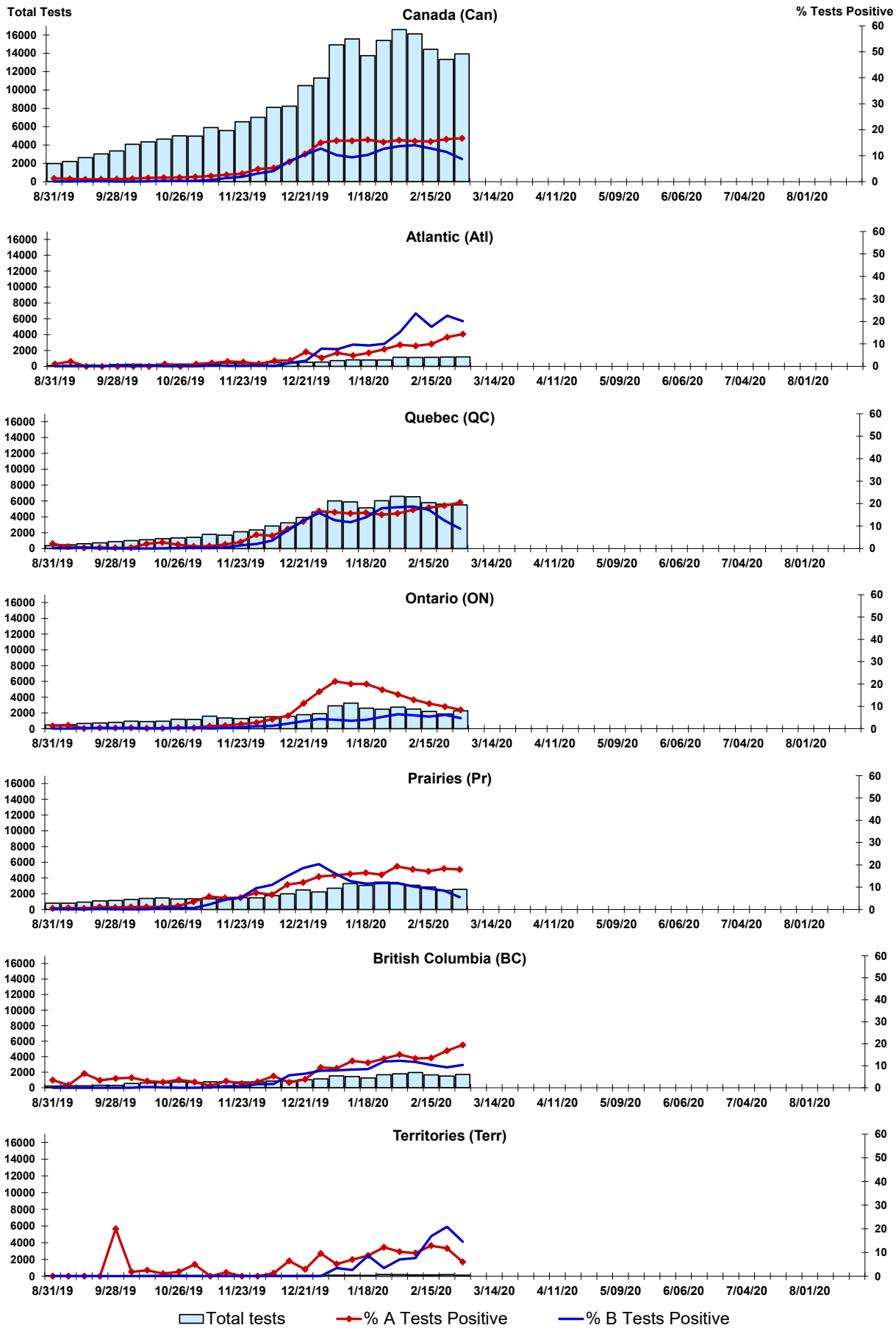


Figure 3: Positive Respiratory syncytial virus (RSV) Tests (%) in Canada by Region by Week of Report

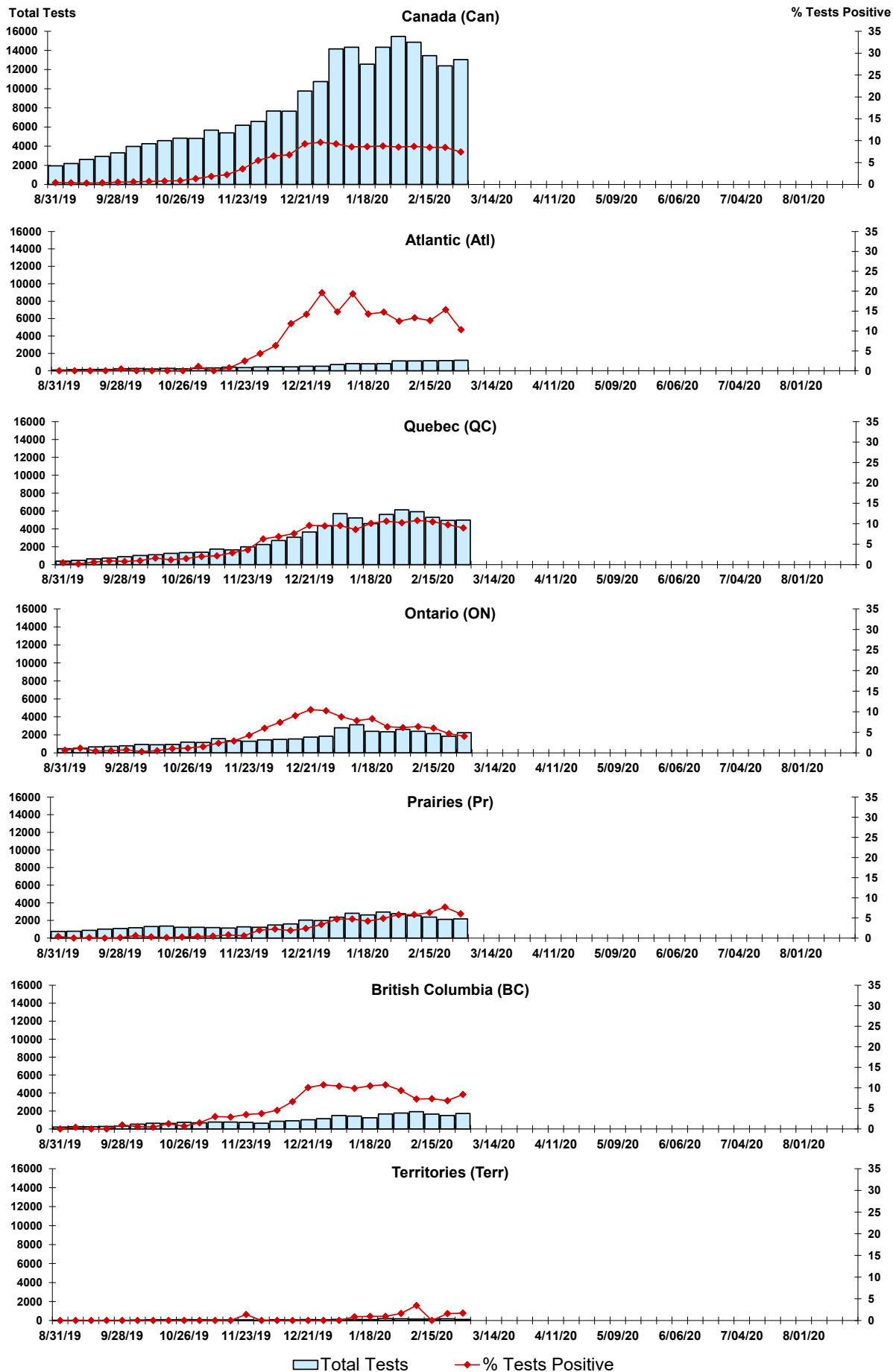


Figure 4: Positive Parainfluenza (PIV) Tests (%) in Canada by Region by Week of Report

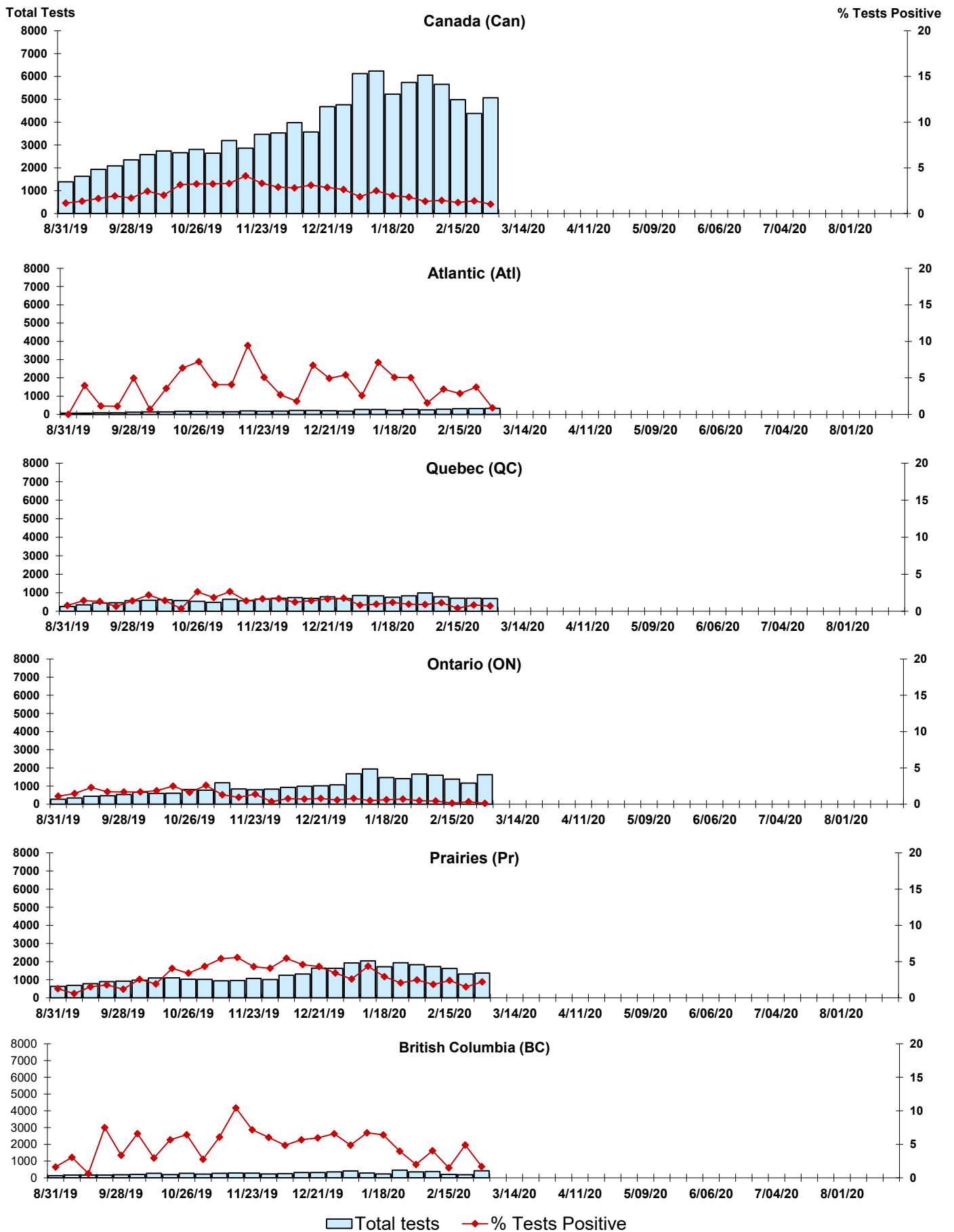


Figure 5: Positive Adenovirus (adeno) Tests (%) in Canada by Region by Week of Report

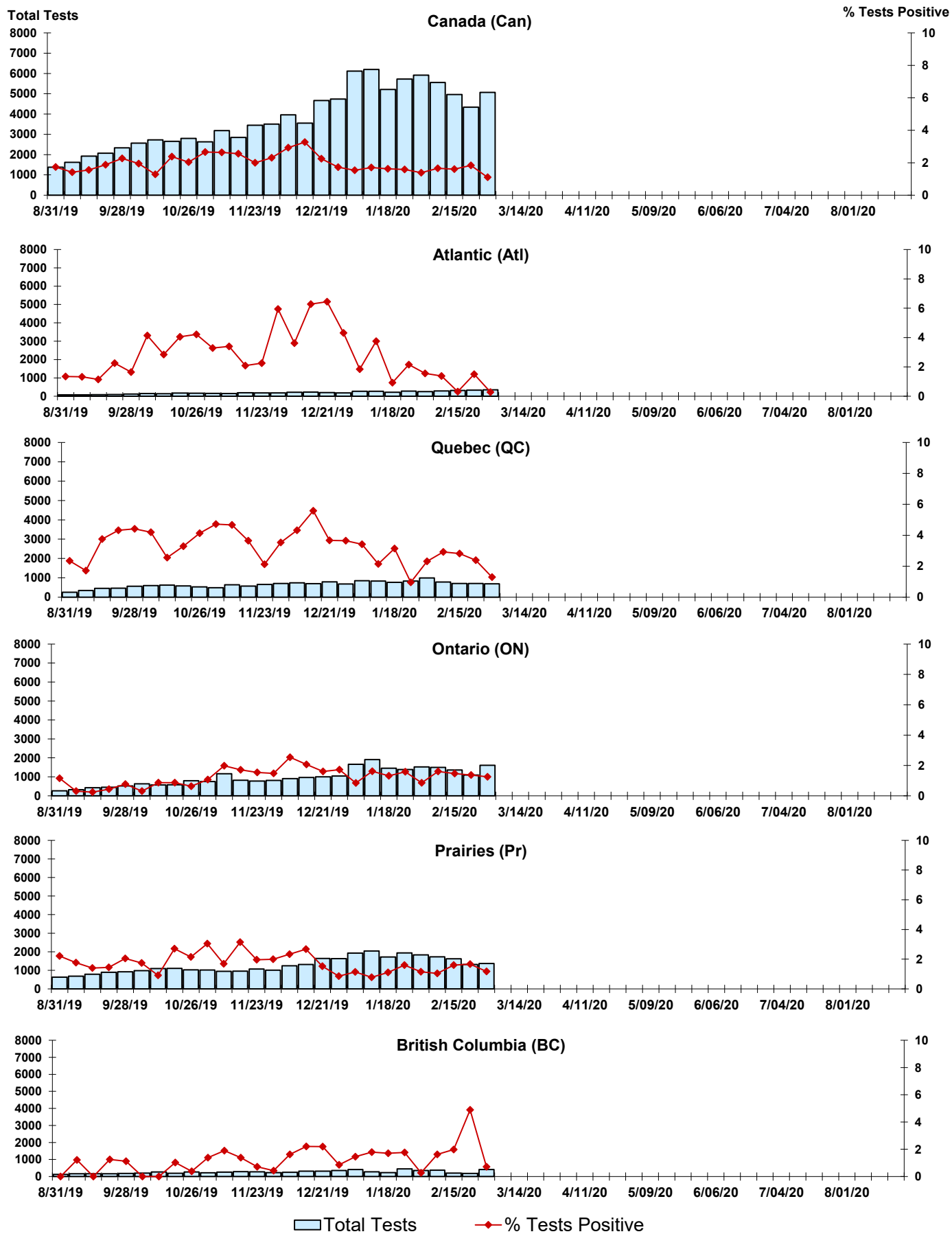


Figure 6: Positive human metapneumovirus (hMPV) Tests (%) in Canada by Region by Week of Report

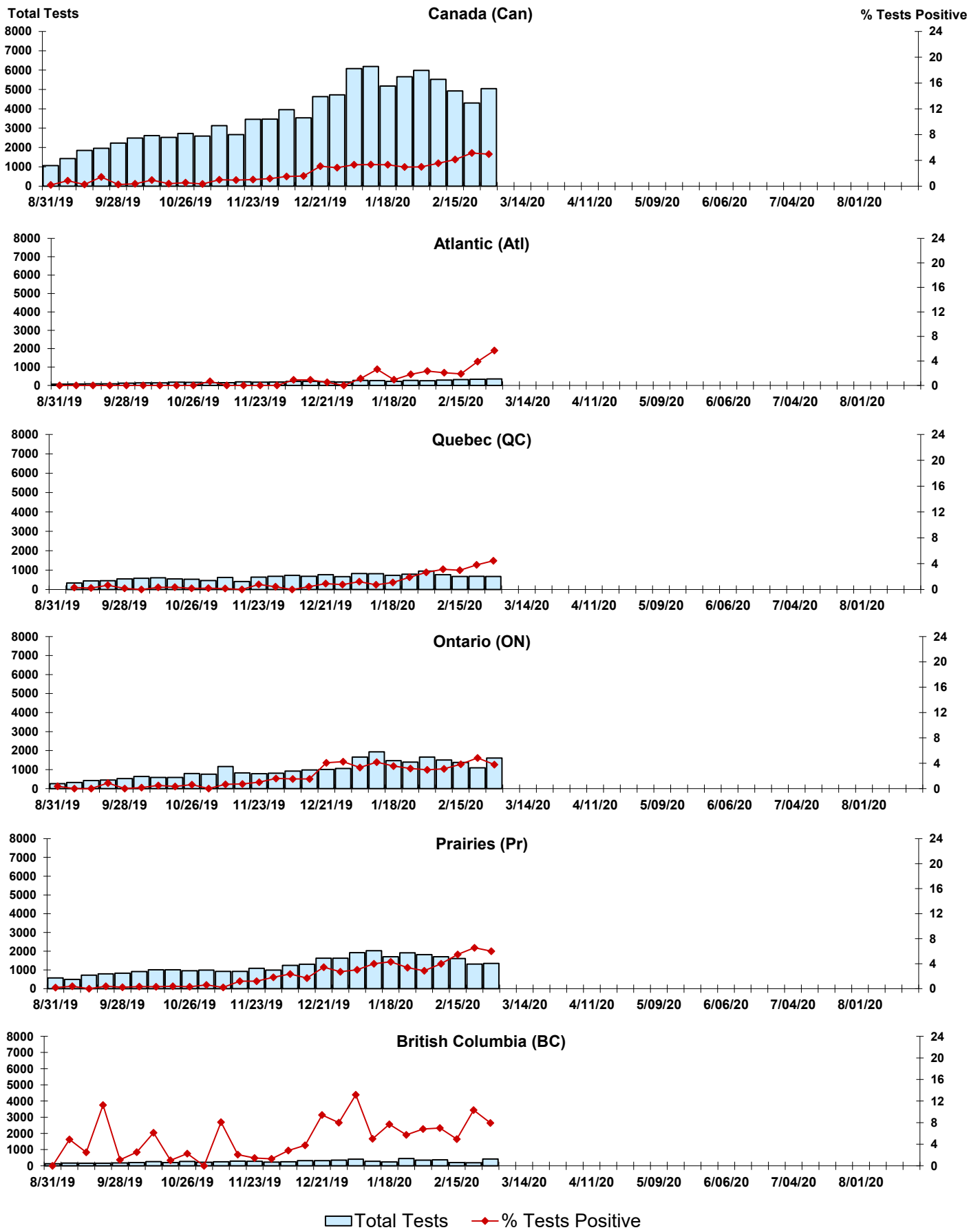


Figure 7: Positive Enterovirus/Rhinovirus (entero/rhino) Tests (%) in Canada by Region by Week of Report

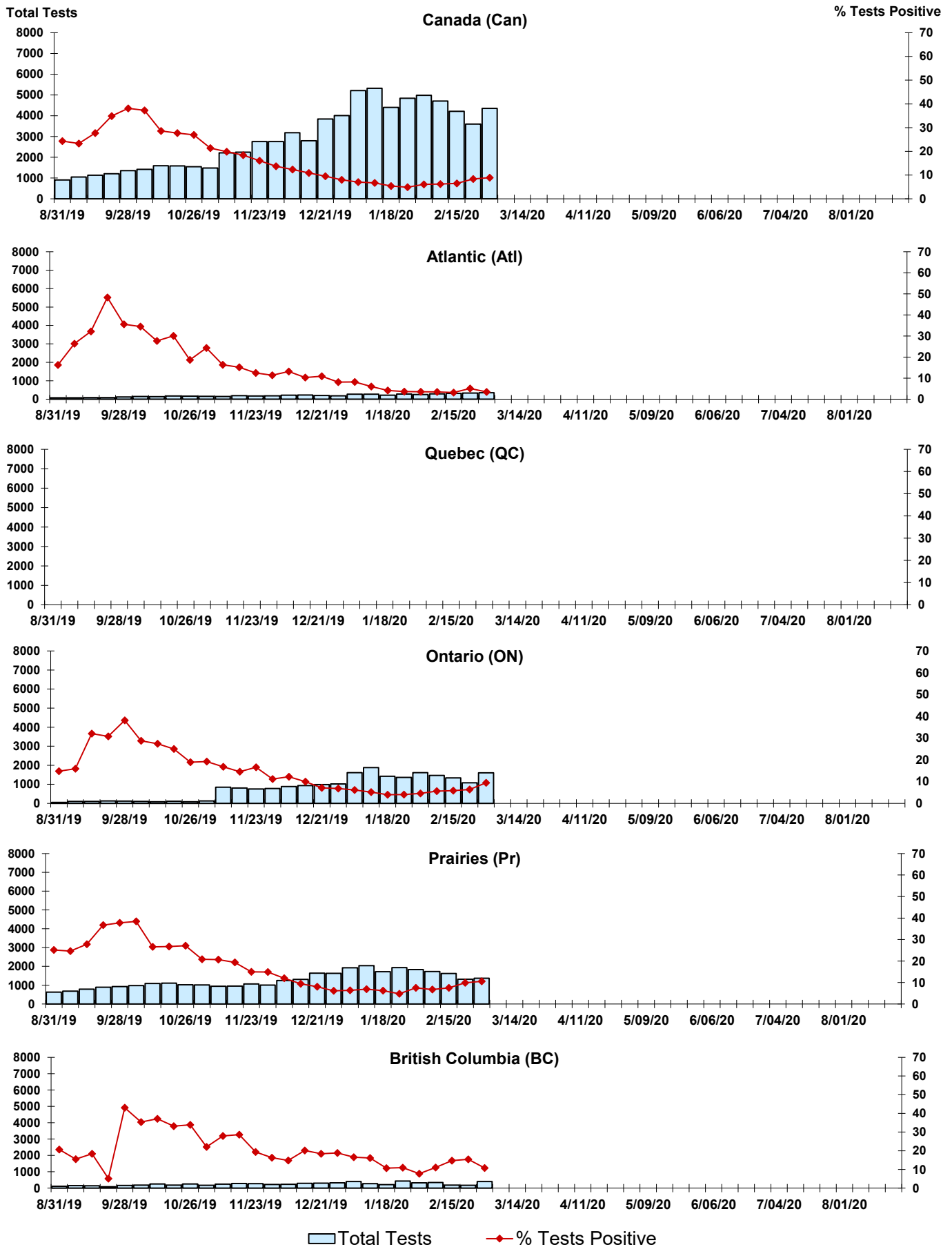
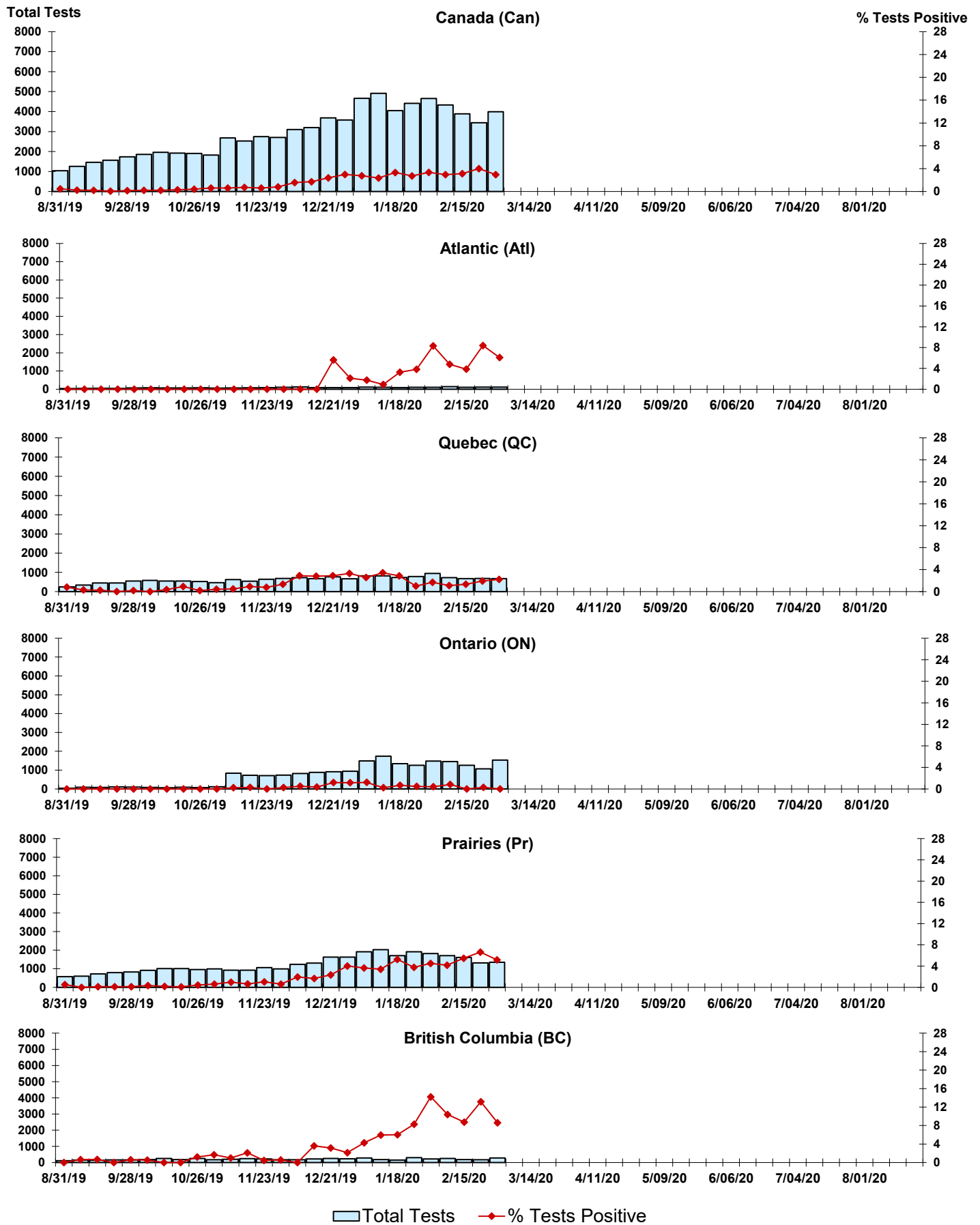


Figure 8: Positive Coronavirus (coron) Tests (%) in Canada by Region by Week of Report



Abbreviations:

A(H1N1)pdm09: Influenza A(H1N1)pdm09

A(H3): Influenza A(H3N2)

A (UnS): Influenza A (Unsubtyped)

Adeno: Adenovirus

CHEO: Children's Hospital of Eastern Ontario

Coron: Coronavirus

Entero: Enterovirus

hMPV: human metapneumovirus

HSC: Health Sciences Centre

N.A.: Not Applicable

P.H.O.L.: Public Health Ontario Laboratory

PIV: Parainfluenza

Rhino: Rhinovirus

RSV: Respiratory syncytial virus

UHN: University Health Network

Notes:

Specimens from Yukon (YT), Northwest Territories (NT) and Nunavut (NU) are sent to reference laboratories in other provinces. Results reported for the Territories reflect the number of specimens that are identified as originating from YT, NT or NU.

Delays in the reporting of data may cause data to change retrospectively.

Due to reporting delays, the sum of weekly report totals do not add up to cumulative totals.