

# Respiratory Virus Report, Week 1 - ending January 9, 2021

The Respiratory Virus Detection Surveillance System collects data from select laboratories across Canada on the number of tests performed and the number of tests positive for influenza and other respiratory viruses. Data are reported on a weekly basis year-round to the Centre for Immunization and Respiratory Infectious Diseases (CIRID), Public Health Agency of Canada. These data are also summarized in the weekly FluWatch report.

In this Respiratory Virus Report, the number of detections of coronavirus reflects only seasonal human coronaviruses, not the novel pandemic coronavirus (SARS-CoV2) that causes COVID-19. For information on COVID-19, see the [Coronavirus disease \(COVID-19\): Outbreak](#)

**Table 1: Respiratory Virus Detections/Isolations for the week ending January 9, 2021 (Reporting Week 202101)**

Reporting Laboratory	Flu Tested	A(H1N1)pdm09 Positive	A(H3) Positive	A(UnS) Positive	Total Flu A Positive	Total Flu B Positive	RSV Tested	RSV Positive	PIV Tested	PIV 1 Positive	PIV 2 Positive	PIV 3 Positive	PIV 4 Positive	Other PIV Positive	Adeno Tested	Adeno Positive	hMPV Tested	hMPV Positive	Entero/Rhino Tested	Entero/Rhino Positive	Coron Tested	Coron Positive
Newfoundland	241	0	0	0	0	0	241	0	241	0	0	0	0	0	242	3	120	0	241	34	N.A.	N.A.
Prince Edward Island	181	0	0	0	0	0	181	0	181	0	0	0	0	0	181	4	181	0	181	14	181	0
Nova Scotia	46	0	0	0	0	0	46	0	17	0	0	0	0	0	17	1	17	0	17	4	17	0
New Brunswick	3199	0	0	0	0	0	374	0	17	0	0	0	0	0	17	0	17	0	17	0	17	0
<b>Atlantic</b>	<b>3667</b>	<b>0</b>	<b>0</b>	<b>0</b>	<b>0</b>	<b>0</b>	<b>842</b>	<b>0</b>	<b>456</b>	<b>0</b>	<b>0</b>	<b>0</b>	<b>0</b>	<b>0</b>	<b>457</b>	<b>8</b>	<b>335</b>	<b>0</b>	<b>456</b>	<b>52</b>	<b>215</b>	<b>0</b>
Région Nord-Est	241	0	0	0	0	0	43	0	0	0	0	0	0	0	0	0	0	0	N.A.	N.A.	0	0
Québec-Chaudière-Appalaches	41	0	0	0	0	0	37	0	23	0	0	0	0	0	23	0	23	0	N.A.	N.A.	23	0
Centre-du-Québec	48	0	0	0	0	0	48	0	9	0	0	0	0	0	9	2	9	0	N.A.	N.A.	9	0
Montréal-Laval	333	0	0	0	0	0	227	0	108	0	0	0	0	0	108	4	108	0	N.A.	N.A.	108	0
Ouest du Québec	42	0	0	0	0	0	37	0	0	0	0	0	0	0	0	0	0	0	N.A.	N.A.	0	0
Montérégie	0	0	0	0	0	0	0	0	0	0	0	0	0	0	0	0	0	0	N.A.	N.A.	0	0
<b>Province of Québec</b>	<b>705</b>	<b>0</b>	<b>0</b>	<b>0</b>	<b>0</b>	<b>0</b>	<b>392</b>	<b>0</b>	<b>140</b>	<b>0</b>	<b>0</b>	<b>0</b>	<b>0</b>	<b>0</b>	<b>140</b>	<b>6</b>	<b>140</b>	<b>0</b>	<b>N.A.</b>	<b>N.A.</b>	<b>140</b>	<b>0</b>
P.H.O.L. - Ottawa	17	0	0	0	0	0	17	0	7	0	0	0	0	0	7	0	7	0	7	0	7	0
CHEO - Ottawa	187	0	0	0	0	0	187	0	24	0	0	0	0	0	24	0	24	0	24	4	24	0
P.H.O.L. - Kingston	33	0	0	0	0	0	33	0	15	0	0	0	0	0	15	0	15	0	15	0	15	0
UHN / Mount Sinai Hospital	500	0	0	0	0	0	475	0	475	0	0	1	1	0	475	3	475	0	475	9	475	1
P.H.O.L. - Toronto	202	0	0	0	0	0	202	0	180	0	0	0	0	0	180	1	180	0	180	3	180	0
Sick Kids Hospital - Toronto	0	0	0	0	0	0	0	0	0	0	0	0	0	0	0	0	0	0	0	0	0	0
Sunnybrook & Women's College HSC	0	0	0	0	0	0	0	0	0	0	0	0	0	0	0	0	0	0	0	0	0	0
P.H.O.L. - Sault Ste. Marie	10	0	0	0	0	0	10	0	5	0	0	0	0	0	5	0	5	0	5	2	5	0
P.H.O.L. - Timmins	42	0	0	0	0	0	42	0	6	0	0	0	0	0	6	0	6	0	6	4	6	0
St. Joseph's - London	0	0	0	0	0	0	0	0	0	0	0	0	0	0	0	0	0	0	0	0	0	0
P.H.O.L. - London	91	0	0	0	0	0	91	0	26	0	0	0	0	0	26	0	26	0	26	4	26	1
P.H.O.L. - Orillia	26	0	0	0	0	0	26	0	4	0	0	0	0	0	4	0	4	0	4	0	4	0
P.H.O.L. - Thunder Bay	11	0	0	0	0	0	11	0	10	0	0	0	0	0	10	0	10	0	10	2	10	0
P.H.O.L. - Sudbury	19	0	0	0	0	0	19	0	19	0	0	0	0	0	19	0	19	0	19	1	19	0
P.H.O.L. - Hamilton	61	0	0	0	0	0	61	0	56	0	0	0	0	0	56	0	56	0	56	0	56	0
P.H.O.L. - Peterborough	15	0	0	0	0	0	15	0	2	0	0	0	0	0	2	0	2	0	2	0	2	0
St. Joseph's - Hamilton	0	0	0	0	0	0	0	0	0	0	0	0	0	0	0	0	0	0	0	0	0	0
<b>Province of Ontario</b>	<b>1214</b>	<b>0</b>	<b>0</b>	<b>0</b>	<b>0</b>	<b>0</b>	<b>1189</b>	<b>0</b>	<b>829</b>	<b>0</b>	<b>0</b>	<b>1</b>	<b>1</b>	<b>0</b>	<b>829</b>	<b>4</b>	<b>829</b>	<b>0</b>	<b>829</b>	<b>29</b>	<b>829</b>	<b>2</b>
Province of Manitoba	1786	0	0	0	0	0	1786	6	81	0	0	0	0	0	81	1	80	0	81	2	80	0
Province of Saskatchewan	140	0	0	0	0	0	140	0	83	0	0	0	0	0	83	1	83	0	83	8	83	2
Province of Alberta	3036	0	0	0	0	0	1132	0	1132	0	0	1	0	0	1132	5	1132	1	1132	53	1132	0
<b>Prairies</b>	<b>4962</b>	<b>0</b>	<b>0</b>	<b>0</b>	<b>0</b>	<b>0</b>	<b>3058</b>	<b>6</b>	<b>1296</b>	<b>0</b>	<b>0</b>	<b>1</b>	<b>0</b>	<b>0</b>	<b>1296</b>	<b>7</b>	<b>1295</b>	<b>1</b>	<b>1296</b>	<b>63</b>	<b>1295</b>	<b>2</b>
<b>British Columbia</b>	<b>2418</b>	<b>0</b>	<b>0</b>	<b>0</b>	<b>0</b>	<b>0</b>	<b>2418</b>	<b>0</b>	<b>376</b>	<b>0</b>	<b>0</b>	<b>0</b>	<b>0</b>	<b>0</b>	<b>376</b>	<b>3</b>	<b>330</b>	<b>0</b>	<b>356</b>	<b>19</b>	<b>1</b>	<b>0</b>
Yukon	0	0	0	0	0	0	0	0	N.A.	N.A.	N.A.	N.A.	N.A.	N.A.	N.A.	N.A.	N.A.	N.A.	N.A.	N.A.	N.A.	N.A.
Northwest Territories	34	0	0	0	0	0	33	0	33	0	0	0	0	0	33	2	33	0	33	9	33	0
Nunavut	0	0	0	0	0	0	0	0	0	0	0	0	0	0	0	0	0	0	0	0	0	0
<b>Territories</b>	<b>34</b>	<b>0</b>	<b>0</b>	<b>0</b>	<b>0</b>	<b>0</b>	<b>33</b>	<b>0</b>	<b>33</b>	<b>0</b>	<b>0</b>	<b>0</b>	<b>0</b>	<b>0</b>	<b>33</b>	<b>2</b>	<b>33</b>	<b>0</b>	<b>33</b>	<b>9</b>	<b>33</b>	<b>0</b>
<b>CANADA</b>	<b>13000</b>	<b>0</b>	<b>0</b>	<b>0</b>	<b>0</b>	<b>0</b>	<b>7932</b>	<b>6</b>	<b>3130</b>	<b>0</b>	<b>0</b>	<b>2</b>	<b>1</b>	<b>0</b>	<b>3131</b>	<b>30</b>	<b>2962</b>	<b>1</b>	<b>2970</b>	<b>172</b>	<b>2513</b>	<b>4</b>

The data in the RVDSS report represent surveillance data available at the time of writing. Missing data are denoted by N.A.

Specimens from Yukon (YT), Northwest Territories (NT) and Nunavut (NU) are sent to reference laboratories in other provinces and reported results reflect specimens identified as originating from YT, NT or NU.

Results from British Columbia comprise of specimens from the following sites: BC Children's and Women's Hospital, Fraser Health Medical Microbiology Laboratory, Island Health, Providence Health Care, Powell River Hospital, St. Paul's Hospital, Vancouver General Hospital, Victoria General Hospital, BCCDC Public Health Laboratory, Interior Health Authority sites and Northern Health Authority sites.

Delays in the reporting of data may cause data to change retrospectively.

**Table 2: Respiratory Virus Detections/Isolations for the period August 23, 2020 - January 9, 2021 (Reporting Weeks 202035-202101)**

Reporting Laboratory	Flu Tested	A(H1N1)pdm09 Positive	A(H3) Positive	A(UnS) Positive	Total Flu A Positive	Total Flu B Positive	RSV Tested	RSV Positive	PIV Tested	PIV 1 Positive	PIV 2 Positive	PIV 3 Positive	PIV 4 Positive	Other PIV Positive	Adeno Tested	Adeno Positive	hMPV Tested	hMPV Positive	Entero/Rhino Tested	Entero/Rhino Positive	Coron Tested	Coron Positive
Newfoundland	6283	0	0	0	0	0	6283	7	6283	1	0	1	0	0	6287	29	6162	1	6283	1742	N.A.	N.A.
Prince Edward Island	983	0	0	0	0	0	983	2	979	2	0	0	0	0	979	16	979	0	979	158	979	0
Nova Scotia	836	0	0	0	0	0	838	0	286	0	0	0	0	0	286	5	286	0	286	50	286	0
New Brunswick	23573	0	0	0	0	1	7602	0	391	0	0	0	0	0	382	5	382	0	382	42	337	0
<b>Atlantic</b>	<b>31675</b>	<b>0</b>	<b>0</b>	<b>0</b>	<b>0</b>	<b>1</b>	<b>15706</b>	<b>9</b>	<b>7939</b>	<b>3</b>	<b>0</b>	<b>1</b>	<b>0</b>	<b>0</b>	<b>7934</b>	<b>55</b>	<b>7809</b>	<b>1</b>	<b>7930</b>	<b>1992</b>	<b>1602</b>	<b>0</b>
Région Nord-Est	1477	0	0	0	0	0	628	1	0	0	0	0	0	0	0	0	0	0	N.A.	N.A.	0	0
Québec-Chaudière-Appalaches	464	0	0	1	1	0	511	0	313	0	0	0	0	0	315	16	310	0	N.A.	N.A.	293	0
Centre-du-Québec	473	0	0	0	0	0	478	1	155	0	0	0	0	0	153	12	155	0	N.A.	N.A.	152	0
Montréal-Laval	3406	0	0	0	0	0	3001	1	2107	0	0	0	0	0	2161	84	2097	0	N.A.	N.A.	2097	3
Ouest du Québec	579	0	0	0	0	0	538	0	0	0	0	0	0	0	0	0	0	0	N.A.	N.A.	0	0
Montérégie	1	0	0	0	0	0	1	0	0	0	0	0	0	0	0	0	0	0	N.A.	N.A.	0	0
<b>Province of Québec</b>	<b>6400</b>	<b>0</b>	<b>0</b>	<b>1</b>	<b>1</b>	<b>0</b>	<b>5157</b>	<b>3</b>	<b>2575</b>	<b>0</b>	<b>0</b>	<b>0</b>	<b>0</b>	<b>0</b>	<b>2629</b>	<b>112</b>	<b>2562</b>	<b>0</b>	<b>N.A.</b>	<b>N.A.</b>	<b>2542</b>	<b>3</b>
P.H.O.L. - Ottawa	317	0	0	0	0	0	317	1	293	0	0	0	0	0	293	0	292	0	293	18	292	0
CHEO - Ottawa	2770	0	0	1	1	1	2367	4	434	0	0	0	0	0	434	6	434	0	434	45	434	0
P.H.O.L. - Kingston	601	0	0	1	1	0	601	0	418	0	0	0	0	0	418	2	414	0	418	101	414	0
UHN / Mount Sinai Hospital	4514	1	0	0	1	1	4489	2	4220	0	2	2	7	0	2594	6	4180	5	3977	62	2016	2
P.H.O.L. - Toronto	3459	0	0	0	0	0	3456	2	3433	0	0	0	0	2	3434	11	3432	0	3433	136	3432	2
Sick Kids Hospital - Toronto	0	0	0	0	0	0	0	0	0	0	0	0	0	0	0	0	0	0	0	0	0	0
Sunnybrook & Women's College HSC	0	0	0	0	0	0	0	0	0	0	0	0	0	0	0	0	0	0	0	0	0	0
P.H.O.L. - Sault Ste. Marie	89	0	0	2	2	0	87	0	79	0	0	0	0	0	79	0	79	0	79	5	79	0
P.H.O.L. - Timmins	414	0	0	0	0	0	414	0	127	0	0	0	0	0	127	0	126	0	127	30	126	0
St. Joseph's - London	218	0	0	0	0	0	218	0	55	0	0	0	0	0	55	0	55	0	91	8	36	0
P.H.O.L. - London	1304	1	0	5	6	2	1294	0	1132	0	0	0	0	2	1132	2	1127	0	1132	124	1127	3
P.H.O.L. - Orillia	214	0	0	1	1	0	212	0	188	0	0	0	0	0	188	1	188	0	188	12	188	0
P.H.O.L. - Thunder Bay	325	0	0	0	0	0	325	0	324	0	0	0	0	0	325	2	324	0	324	128	324	0
P.H.O.L. - Sudbury	289	0	0	0	0	0	287	0	285	0	0	0	0	0	285	1	285	0	285	26	285	0
P.H.O.L. - Hamilton	1072	0	0	0	0	0	1029	1	947	0	0	0	0	0	947	2	947	0	947	93	947	0
P.H.O.L. - Peterborough	309	0	0	1	1	0	263	0	230	0	0	0	0	0	230	0	230	0	230	18	230	0
St. Joseph's - Hamilton	3994	0	0	0	0	0	3994	1	3994	0	0	0	0	0	3994	16	3994	0	3994	342	0	0
<b>Province of Ontario</b>	<b>19889</b>	<b>2</b>	<b>0</b>	<b>11</b>	<b>13</b>	<b>4</b>	<b>19353</b>	<b>11</b>	<b>16159</b>	<b>0</b>	<b>2</b>	<b>2</b>	<b>7</b>	<b>4</b>	<b>14535</b>	<b>49</b>	<b>16107</b>	<b>5</b>	<b>15952</b>	<b>1148</b>	<b>9930</b>	<b>7</b>
Manitoba	24441	0	0	0	0	1	24441	55	1890	0	1	1	0	0	1890	13	1789	1	1890	116	1789	1
Province of Saskatchewan	2852	0	0	0	0	0	2852	2	1153	0	0	1	0	0	1153	9	1153	0	1153	128	1153	2
Province of Alberta	78852	1	0	3	4	0	63747	0	63747	2	17	2	3	0	63747	103	63747	11	63747	5517	63747	17
<b>Prairies</b>	<b>106145</b>	<b>1</b>	<b>0</b>	<b>3</b>	<b>4</b>	<b>1</b>	<b>91040</b>	<b>57</b>	<b>66790</b>	<b>2</b>	<b>18</b>	<b>4</b>	<b>3</b>	<b>0</b>	<b>66790</b>	<b>125</b>	<b>66689</b>	<b>12</b>	<b>66790</b>	<b>5761</b>	<b>66689</b>	<b>20</b>
<b>British Columbia</b>	<b>34921</b>	<b>1</b>	<b>2</b>	<b>4</b>	<b>7</b>	<b>5</b>	<b>34918</b>	<b>5</b>	<b>9109</b>	<b>0</b>	<b>2</b>	<b>0</b>	<b>3</b>	<b>0</b>	<b>9575</b>	<b>47</b>	<b>9529</b>	<b>31</b>	<b>9383</b>	<b>953</b>	<b>5249</b>	<b>6</b>
Yukon	3404	0	0	8	8	7	3357	4	N.A.	N.A.	N.A.	N.A.	N.A.	N.A.	N.A.	N.A.	N.A.	N.A.	N.A.	N.A.	N.A.	N.A.
Northwest Territories	829	0	0	0	0	0	824	0	824	0	0	0	1	0	824	8	824	1	824	262	824	0
Nunavut	1072	0	0	0	0	0	1068	0	1068	3	1	0	0	0	1068	25	1068	5	1068	277	175	0
<b>Territories</b>	<b>5305</b>	<b>0</b>	<b>0</b>	<b>8</b>	<b>8</b>	<b>7</b>	<b>5249</b>	<b>4</b>	<b>1892</b>	<b>3</b>	<b>1</b>	<b>0</b>	<b>1</b>	<b>0</b>	<b>1892</b>	<b>33</b>	<b>1892</b>	<b>6</b>	<b>1892</b>	<b>539</b>	<b>999</b>	<b>0</b>
<b>CANADA</b>	<b>204335</b>	<b>4</b>	<b>2</b>	<b>27</b>	<b>33</b>	<b>18</b>	<b>171423</b>	<b>89</b>	<b>104464</b>	<b>8</b>	<b>23</b>	<b>7</b>	<b>14</b>	<b>4</b>	<b>103355</b>	<b>421</b>	<b>104588</b>	<b>55</b>	<b>101947</b>	<b>10393</b>	<b>87011</b>	<b>36</b>

The data in the RVDSS report represent surveillance data available at the time of writing. Missing data are denoted by N.A.

Specimens from YT, NT and NU are sent to reference laboratories in other provinces and reported results reflect specimens identified as originating from YT, NT or NU.

Results from British Columbia comprise of specimens from the following sites: BC Children's and Women's Hospital, Children's and Women's Hospital Laboratory, Fraser Health Medical Microbiology Laboratory, Island Health, Providence Health Care, Powell River Hospital, St. Paul's Hospital, Vancouver General Hospital, Victoria General Hospital, BCCDC Public Health Laboratory, Interior Health Authority sites and Northern Health Authority sites.

Delays in the reporting of data may cause data to change retrospectively.

Due to reporting delays, the sum of weekly report totals do not add up to cumulative totals.

Figure 1: Number positive laboratory tests for other respiratory viruses by report week, Canada, 2020-21

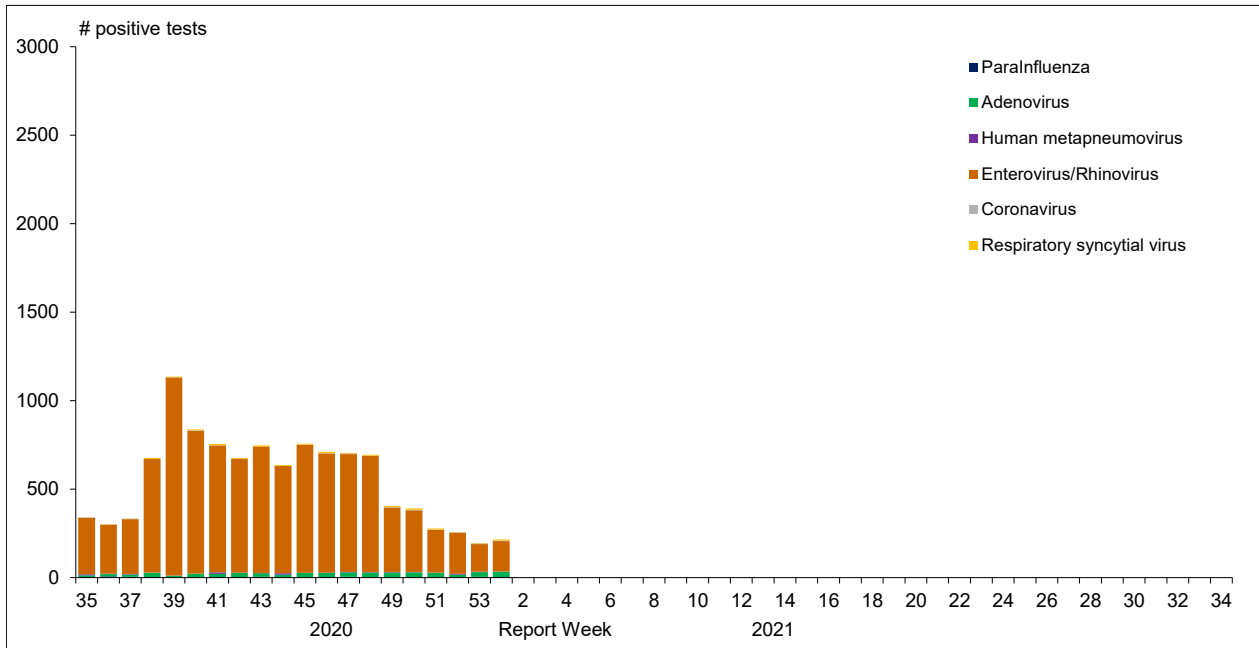


Figure 2 : Positive Influenza Tests (%) in Canada by Region by Week of Report

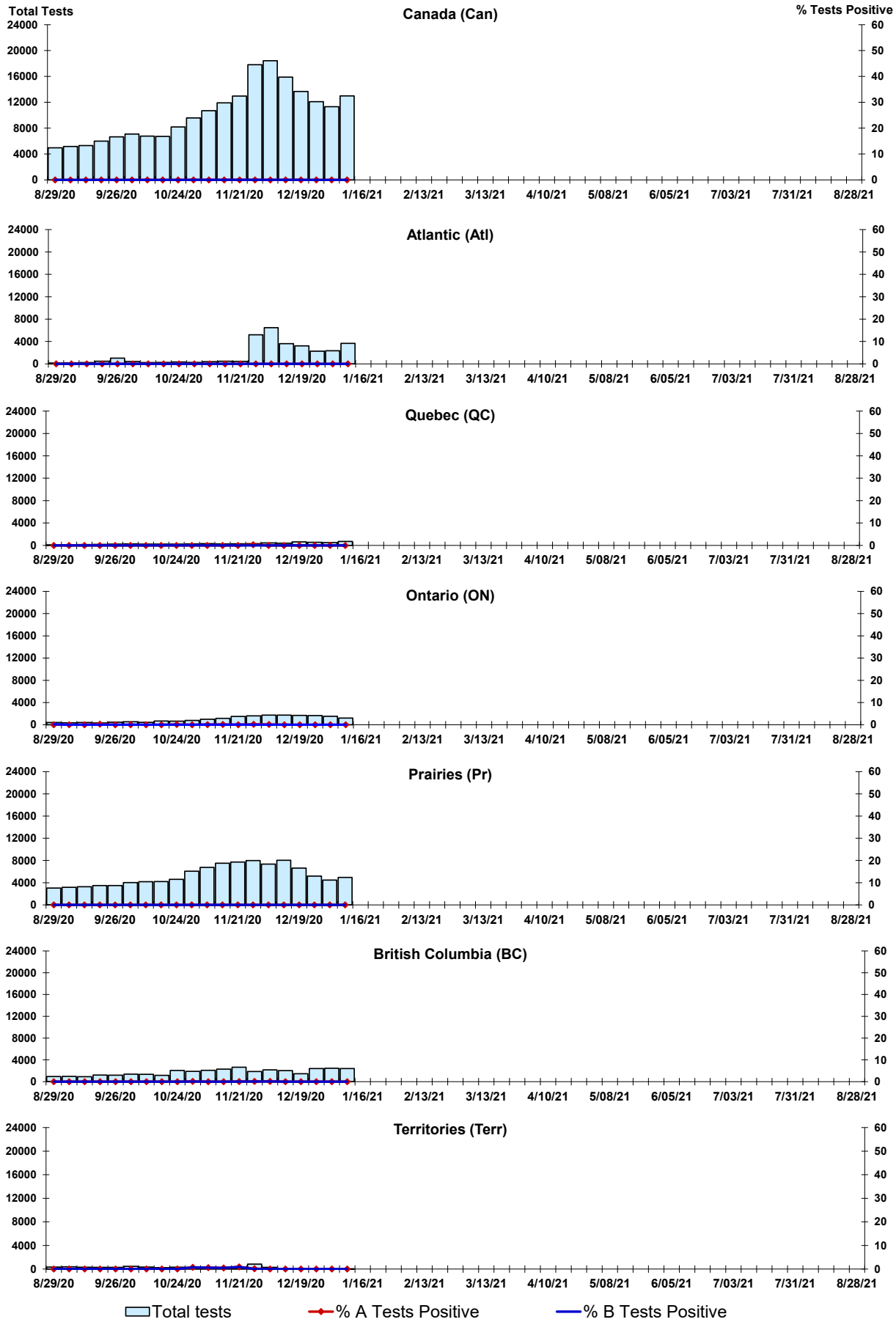


Figure 3: Positive Respiratory syncytial virus (RSV) Tests (%) in Canada by Region by Week of Report

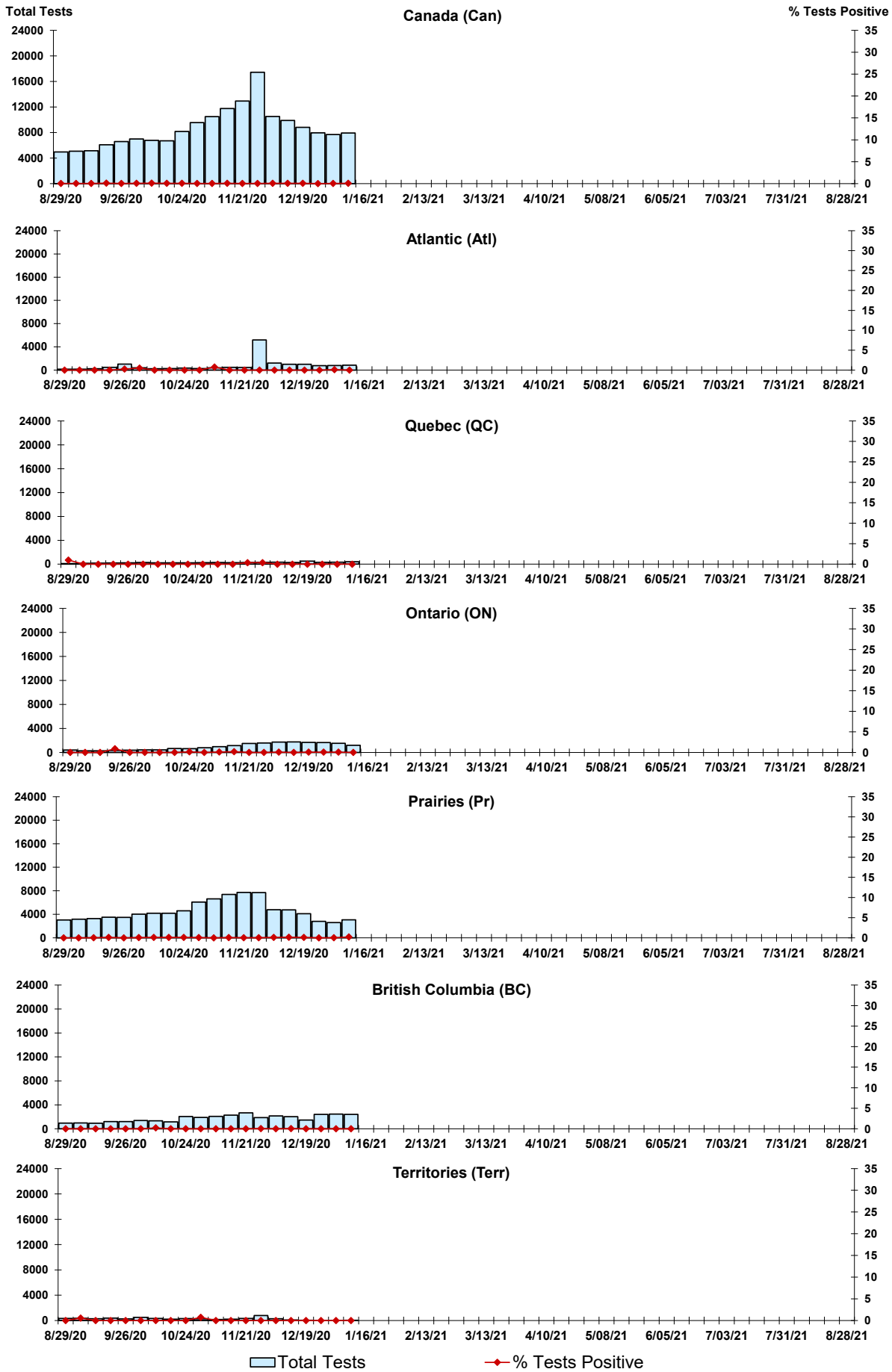
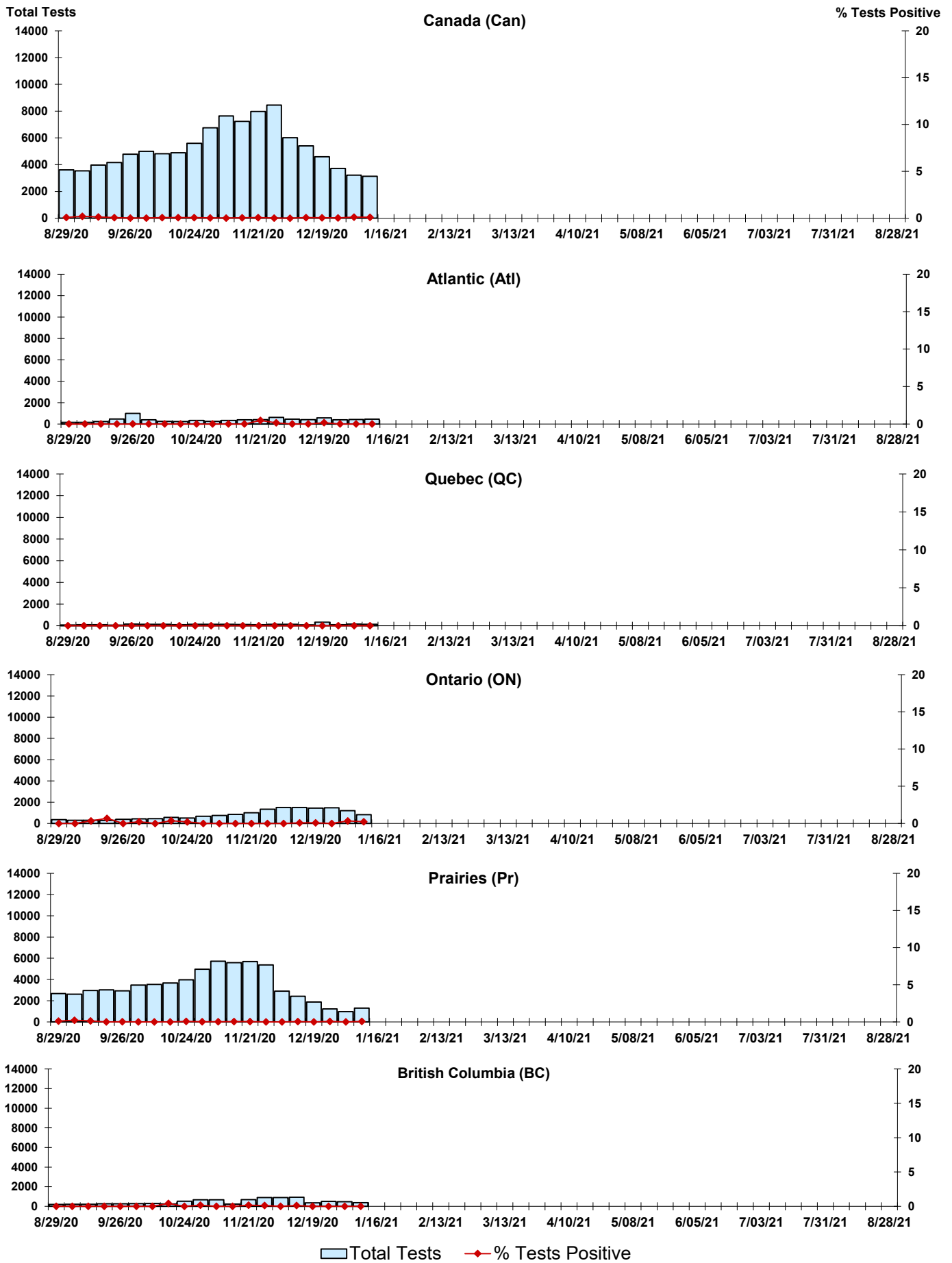


Figure 4: Positive Parainfluenza (PIV) Tests (%) in Canada by Region by Week of Report



Legend: Total Tests (light blue bar), % Tests Positive (red diamond)

Figure 5: Positive Adenovirus (adeno) Tests (%) in Canada by Region by Week of Report

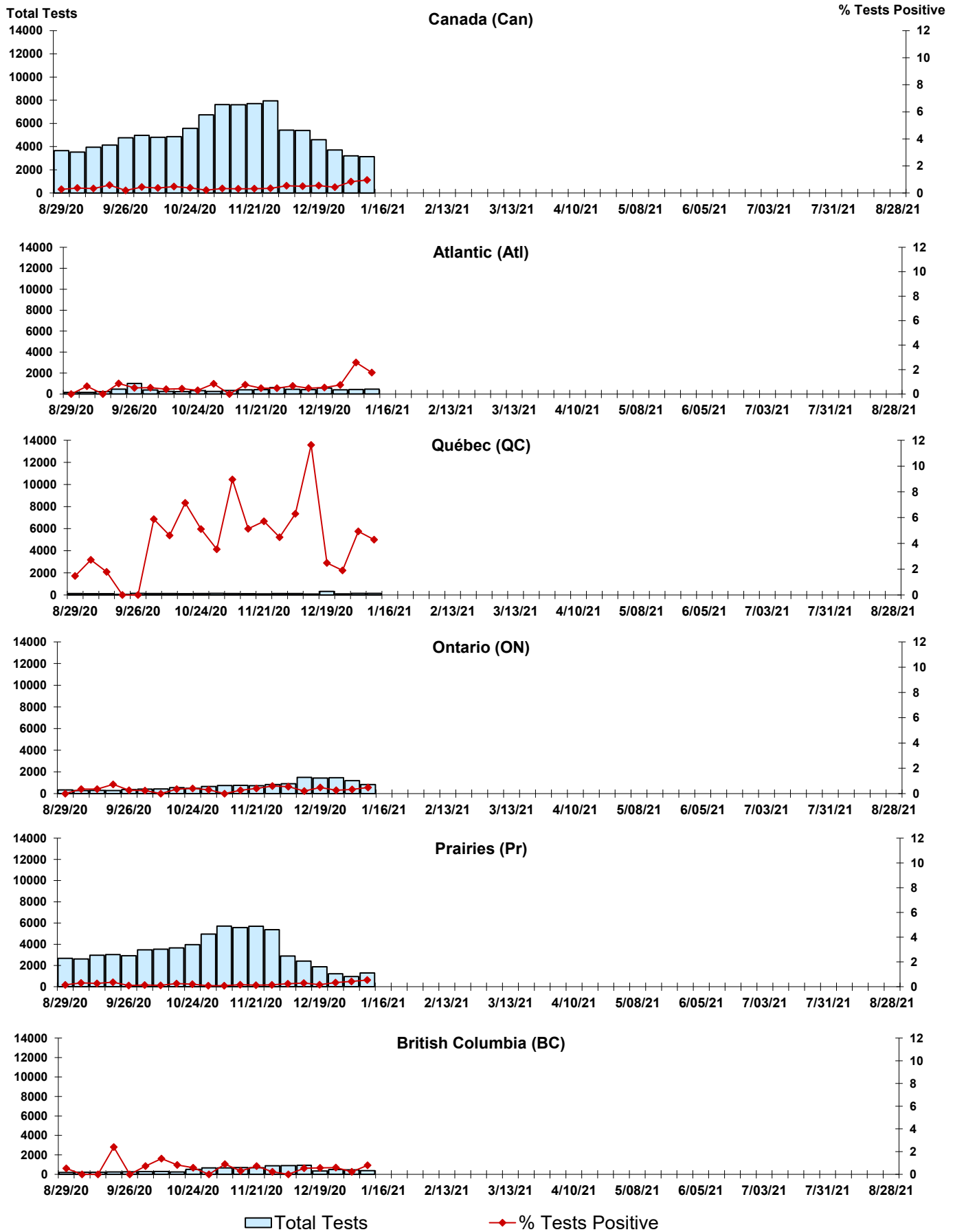


Figure 6: Positive human metapneumovirus (hMPV) Tests (%) in Canada by Region by Week of Report

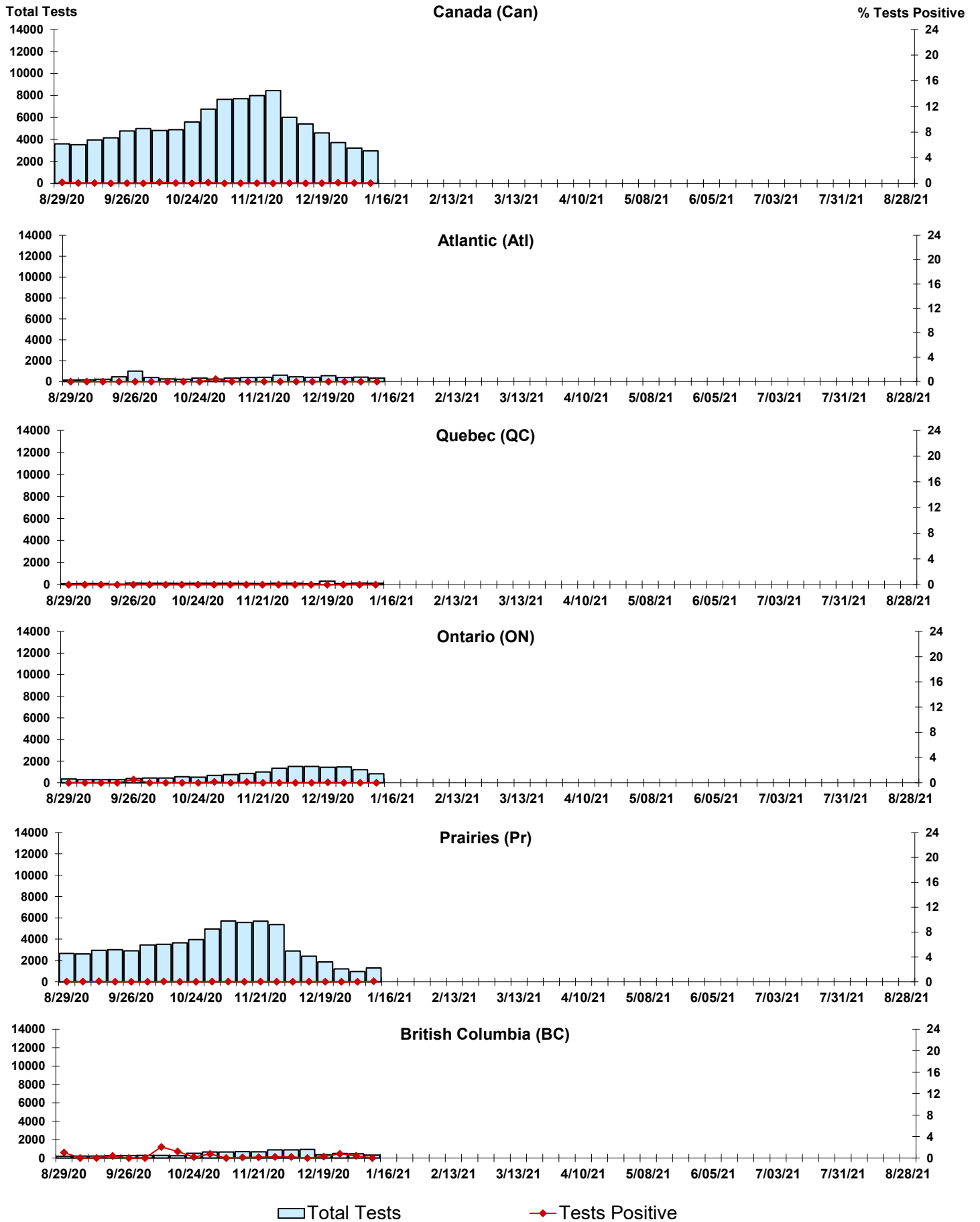




Figure 7: Positive Enterovirus/Rhinovirus (entero/rhino) Tests (%) in Canada by Region by Week of Report

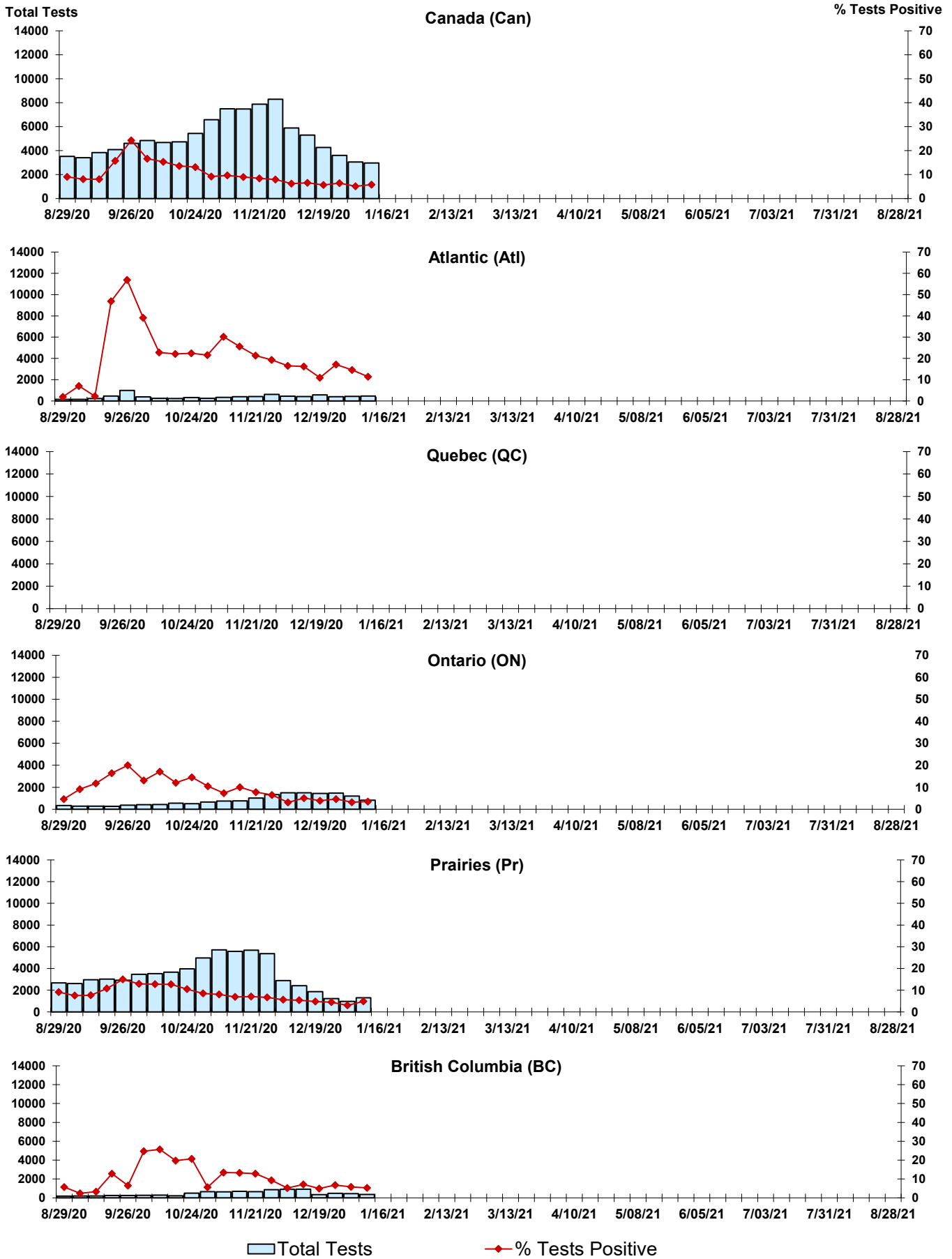
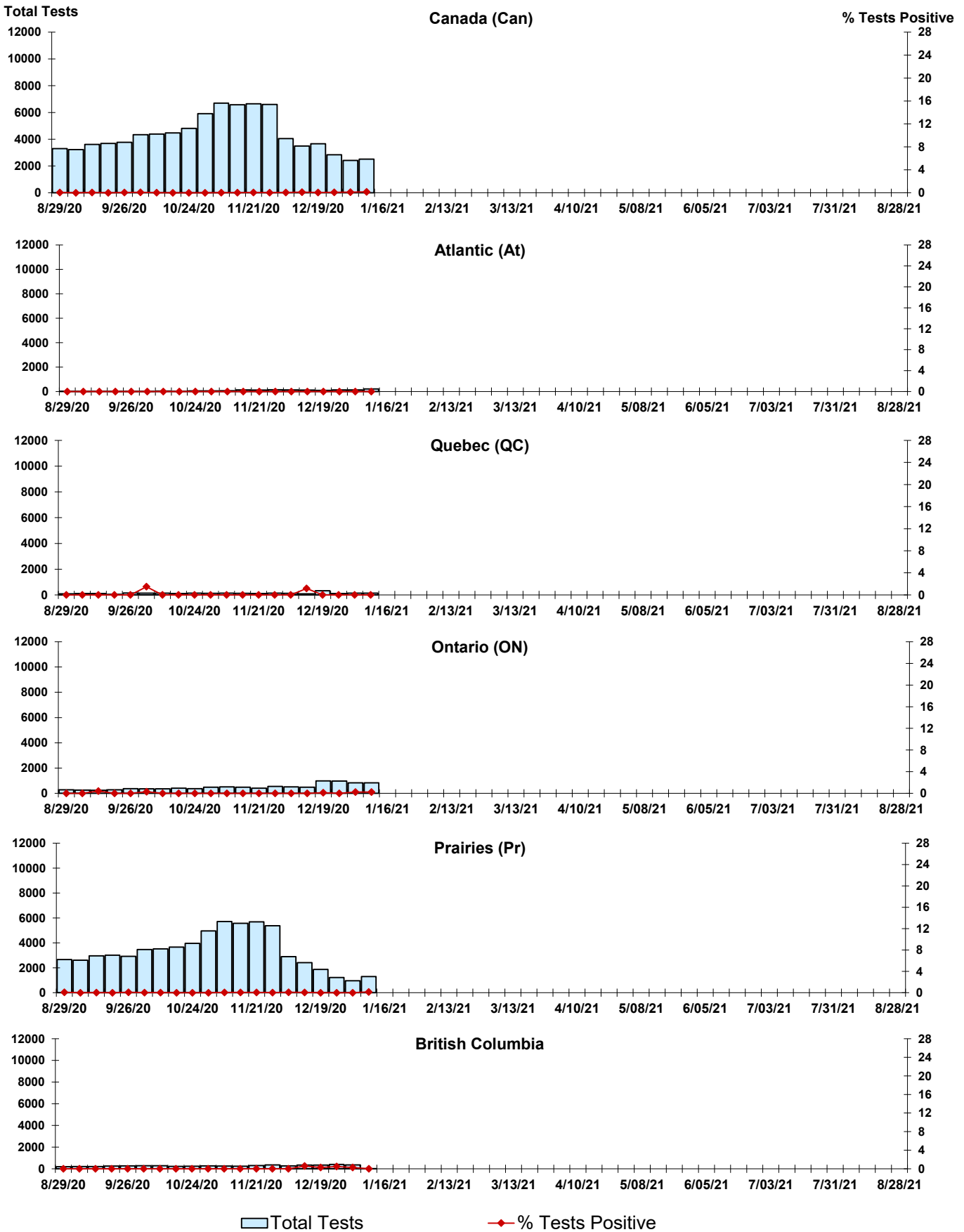


Figure 8: Positive Coronavirus (coron) Tests (%) in Canada by Region by Week of Report



## Abbreviations:

A(H1N1)pdm09: Influenza A(H1N1)pdm09

A(H3): Influenza A(H3N2)

A (UnS): Influenza A (Unsubtyped)

Adeno: Adenovirus

CHEO: Children's Hospital of Eastern Ontario

Coron: Coronavirus

Enterovirus: Enterovirus

hMPV: human metapneumovirus

HSC: Health Sciences Centre

N.A.: Not Applicable

P.H.L.: Public Health Laboratory

P.H.O.L.: Public Health Ontario Laboratory

PIV: Parainfluenza

Rhino: Rhinovirus

RSV: Respiratory syncytial virus

UHN: University Health Network

## Notes:

The data in the RVDSS report represent surveillance data available at the time of writing. Missing data are denoted by N.A.

Specimens from Yukon (YT), Northwest Territories (NT) and Nunavut (NU) are sent to reference laboratories in other provinces. Results reported for the Territories reflect the number of specimens that are identified as originating from YT, NT or NU.

Delays in the reporting of data may cause data to change retrospectively.

Due to reporting delays, the sum of weekly report totals do not add up to cumulative totals.