

# RESPIRATORY VIRUS DETECTION REPORT

March 27 to April 2, 2022  
(Surveillance Week 2022-13)



In this Respiratory Virus Report, the number of detections of coronavirus reflects only seasonal human coronaviruses, not the novel pandemic coronavirus (SARS-CoV-2) that causes COVID-19. For information on COVID-19, see the [Coronavirus disease \(COVID-19\): Outbreak update](#).

## Overall Summary

Detections of seasonal respiratory viruses have increased since February 2022. Activity of most respiratory viruses is within or below expected levels for this time of year.

- Respiratory syncytial virus (403 detections; 4.2% positive) is the most common seasonal respiratory virus detected in Canada, but activity is below expected levels.
- A total of 233 influenza detections were reported (233 influenza A, 0 influenza B).
  - Detections of influenza have increased in recent weeks; however, the overall number of weekly detections remain low.
- Detections of other respiratory viruses are low.
- The number of tests performed for all viruses were within or above expected levels.
- 32/34 sentinel laboratories reported surveillance data.

## Abbreviations

Flu: Influenza

Flu A(H1N1)pdm09: Influenza A(H1N1)pdm09

Flu A(H3): Influenza A(H3N2)

Flu A (UnS): Influenza A(Unsubtyped)

RSV: Respiratory syncytial virus

HPIV: Human parainfluenza virus

HMPV: Human metapneumovirus

ADV: Adenovirus

EV/RV: Enterovirus/Rhinovirus

HCoV: Human coronavirus

Atl: Atlantic Canada

BC: British Columbia

Can: Canada

EORLA: Eastern Ontario Regional Laboratory Association

HSC: Health Sciences Centre

N.C.: Data not collected

N.R.: Data not reported for current week

ON: Ontario

PR: Prairies

P.H.O.L.: Public Health Ontario Laboratory

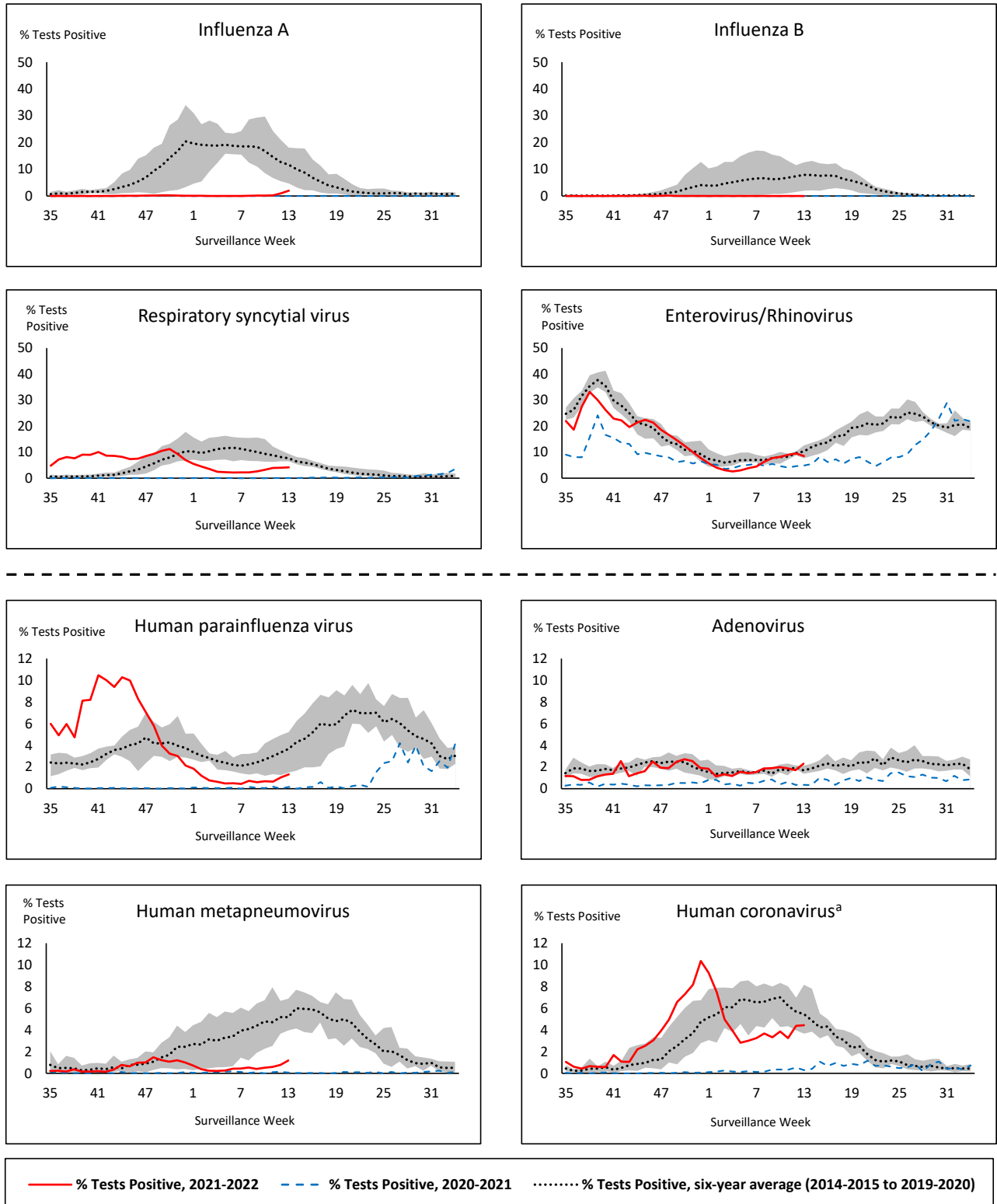
QC: Quebec

Terr: Territories of Canada

UHN: University Health Network



**Figure 1: Positive respiratory virus tests (%) reported by participating laboratories in Canada by surveillance week compared to average and range from 2014-2015 to 2019-2020 season**



Shaded area represents the maximum and minimum % of respiratory virus tests positive reported by week from seasons 2014-2015 to 2019-2020

Note: Data from week 11 of the 2019-2020 season onwards are excluded from the historical comparison due to the COVID-19 pandemic

Note: % Tests Positive scale changes across the dashed line

<sup>a</sup> Human coronavirus excludes human coronaviruses SARS-CoV, MERS-CoV and SARS-CoV-2; Includes seasonal human coronaviruses HCoV-229E, HCoV-OC43, HCoV-NL63, HCoV-HKU1.

**Table 1: Respiratory virus detections for the week ending April 2, 2022 (surveillance week 2022-13)**

Reporting Laboratory	Flu Tested	A(H1)pdm09 Positive	A(H3) Positive	A(UnS) Positive	Total Flu A Positive	Total Flu B Positive	RSV Tested	RSV Positive	HPIV Tested	HPIV 1 Positive	HPIV 2 Positive	HPIV 3 Positive	HPIV 4 Positive	Other HPIV Positive	ADV Tested	ADV Positive	HMPV Tested	HMPV Positive	EV/RV Tested	EV/RV Positive	HCoV Tested	HCoV Positive
Newfoundland	144	0	0	0	0	0	144	1	144	0	2	0	0	0	144	0	144	0	144	8	N.C.	N.C.
Prince Edward Island	31	0	0	0	0	0	31	8	31	0	0	1	0	0	31	0	31	5	31	8	31	0
Nova Scotia	639	0	0	4	4	0	639	0	21	0	0	0	0	0	21	1	21	0	21	3	21	0
New Brunswick	510	0	0	0	0	0	300	0	31	0	0	0	0	0	31	0	31	0	31	2	31	1
<b>Atlantic</b>	<b>1324</b>	<b>0</b>	<b>0</b>	<b>4</b>	<b>4</b>	<b>0</b>	<b>1114</b>	<b>9</b>	<b>227</b>	<b>0</b>	<b>2</b>	<b>1</b>	<b>0</b>	<b>0</b>	<b>227</b>	<b>1</b>	<b>227</b>	<b>5</b>	<b>227</b>	<b>21</b>	<b>83</b>	<b>1</b>
Région Nord-Est	555	0	0	4	4	0	89	0	1	0	0	0	0	0	1	0	1	0	N.C.	N.C.	44	1
Québec-Chaudière-Appalaches	101	0	0	9	9	0	104	0	28	0	0	0	2	0	68	4	68	2	N.C.	N.C.	62	1
Centre-du-Québec	139	0	0	8	8	0	131	0	19	0	1	0	0	0	19	4	19	1	N.C.	N.C.	19	0
Montréal-Laval	526	0	2	21	23	0	525	1	200	0	4	1	0	0	200	17	200	2	N.C.	N.C.	200	5
Ouest du Québec	109	0	0	2	2	0	109	0	3	0	1	0	0	0	3	1	3	0	N.C.	N.C.	3	0
Montérégie	54	0	0	5	5	0	54	0	0	0	0	0	0	0	0	0	0	0	N.C.	N.C.	0	0
<b>Province of Québec</b>	<b>1484</b>	<b>0</b>	<b>2</b>	<b>49</b>	<b>51</b>	<b>0</b>	<b>1012</b>	<b>1</b>	<b>251</b>	<b>0</b>	<b>6</b>	<b>1</b>	<b>2</b>	<b>0</b>	<b>291</b>	<b>26</b>	<b>291</b>	<b>5</b>	<b>N.C.</b>	<b>N.C.</b>	<b>328</b>	<b>7</b>
P.H.O.L. - Ottawa	26	0	0	0	0	0	26	0	26	0	0	0	0	1	26	0	26	0	26	8	26	1
EORLA	102	0	0	0	0	0	102	0	35	0	0	0	0	0	35	1	35	0	35	7	35	0
P.H.O.L. - Kingston	73	0	56	0	56	0	18	0	18	0	0	0	0	0	18	0	18	0	18	3	18	1
UHN / Mount Sinai Hospital	475	0	0	3	3	0	475	2	11	0	0	0	0	0	11	0	11	0	11	0	11	1
P.H.O.L. - Toronto	244	0	4	0	4	0	240	2	240	0	0	0	0	3	240	5	240	1	240	19	240	12
Sick Kids Hospital - Toronto	N.R.	N.R.	N.R.	N.R.	N.R.	N.R.	N.R.	N.R.	N.R.	N.R.	N.R.	N.R.	N.R.	N.R.	N.R.	N.R.	N.R.	N.R.	N.R.	N.R.	N.R.	N.R.
Sunnybrook & Women's College HSC	N.R.	N.R.	N.R.	N.R.	N.R.	N.R.	N.R.	N.R.	N.R.	N.R.	N.R.	N.R.	N.R.	N.R.	N.R.	N.R.	N.R.	N.R.	N.R.	N.R.	N.R.	N.R.
P.H.O.L. - Sault Ste. Marie	2	0	0	0	0	0	2	0	2	0	0	0	0	0	2	0	2	0	2	0	2	0
P.H.O.L. - Timmins	11	0	0	0	0	0	11	1	11	0	0	0	0	0	11	0	11	0	11	0	11	0
St. Joseph's - London	361	0	0	7	7	0	361	4	361	0	0	0	0	0	361	4	361	9	361	16	1	0
P.H.O.L. - London	58	0	1	1	2	0	58	0	58	0	0	0	0	1	58	1	58	1	58	10	58	9
P.H.O.L. - Orillia	10	0	0	0	0	0	10	0	10	0	0	0	0	0	10	0	10	0	10	2	10	0
P.H.O.L. - Thunder Bay	9	0	0	0	0	0	9	0	9	0	0	0	0	0	9	0	9	0	9	0	9	1
P.H.O.L. - Sudbury	5	0	1	0	1	0	5	0	5	0	0	0	0	0	5	0	5	0	5	1	5	0
P.H.O.L. - Hamilton	21	0	1	0	1	0	21	0	21	0	0	0	0	0	21	1	21	0	21	2	21	1
P.H.O.L. - Peterborough	4	0	0	0	0	0	4	0	4	0	0	0	0	0	4	0	4	0	4	0	4	0
St. Joseph's - Hamilton	553	0	0	7	7	0	553	3	553	0	0	0	0	0	553	3	553	2	553	32	0	0
<b>Province of Ontario</b>	<b>1954</b>	<b>0</b>	<b>63</b>	<b>18</b>	<b>81</b>	<b>0</b>	<b>1895</b>	<b>12</b>	<b>1364</b>	<b>0</b>	<b>0</b>	<b>0</b>	<b>0</b>	<b>5</b>	<b>1364</b>	<b>15</b>	<b>1364</b>	<b>13</b>	<b>1364</b>	<b>100</b>	<b>451</b>	<b>26</b>
Province of Manitoba	873	0	2	0	2	0	873	68	111	0	0	0	1	0	111	2	131	0	111	11	131	5
Province of Saskatchewan	532	0	0	15	15	0	531	112	160	0	0	1	1	0	160	1	160	4	160	26	160	4
Province of Alberta	1727	1	15	45	61	0	687	113	687	0	2	0	5	0	687	16	687	8	687	52	687	16
<b>Prairies</b>	<b>3132</b>	<b>1</b>	<b>17</b>	<b>60</b>	<b>78</b>	<b>0</b>	<b>2091</b>	<b>293</b>	<b>958</b>	<b>0</b>	<b>2</b>	<b>1</b>	<b>7</b>	<b>0</b>	<b>958</b>	<b>19</b>	<b>978</b>	<b>12</b>	<b>958</b>	<b>89</b>	<b>978</b>	<b>25</b>
<b>British Columbia</b>	<b>3655</b>	<b>0</b>	<b>5</b>	<b>0</b>	<b>18</b>	<b>0</b>	<b>3435</b>	<b>68</b>	<b>539</b>	<b>0</b>	<b>1</b>	<b>3</b>	<b>9</b>	<b>4</b>	<b>539</b>	<b>17</b>	<b>539</b>	<b>5</b>	<b>524</b>	<b>56</b>	<b>524</b>	<b>46</b>
Yukon	51	0	0	0	0	0	51	1	N.C.	N.C.	N.C.	N.C.	N.C.	N.C.	N.C.	N.C.	N.C.	N.C.	N.C.	N.C.	N.C.	N.C.
Northwest Territories	67	0	1	0	1	0	67	17	1	0	0	0	0	0	1	0	1	0	67	1	1	0
Nunavut	50	0	0	0	0	0	49	2	N.C.	N.C.	N.C.	N.C.	N.C.	N.C.	N.C.	N.C.	N.C.	N.C.	N.C.	N.C.	N.C.	N.C.
<b>Territories</b>	<b>168</b>	<b>0</b>	<b>1</b>	<b>0</b>	<b>1</b>	<b>0</b>	<b>167</b>	<b>20</b>	<b>2</b>	<b>0</b>	<b>0</b>	<b>0</b>	<b>0</b>	<b>0</b>	<b>2</b>	<b>0</b>	<b>2</b>	<b>0</b>	<b>68</b>	<b>2</b>	<b>2</b>	<b>0</b>
<b>CANADA</b>	<b>11717</b>	<b>1</b>	<b>88</b>	<b>131</b>	<b>233</b>	<b>0</b>	<b>9714</b>	<b>403</b>	<b>3341</b>	<b>0</b>	<b>11</b>	<b>6</b>	<b>18</b>	<b>9</b>	<b>3381</b>	<b>78</b>	<b>3401</b>	<b>40</b>	<b>3141</b>	<b>268</b>	<b>2366</b>	<b>105</b>

The data in the RVDSS report represent surveillance data available at the time of writing. Data missing from the current week are denoted by N.R. Data not collected by reporting lab denoted by N.C.

The reporting laboratory previously listed as CHEO - Ottawa is now listed as EORLA to better reflect data submitted by this provider.

Specimens from Yukon (YT) are sent to reference laboratories in British Columbia and reported results reflect specimens identified as originating from YT.

Results from British Columbia comprise of specimens from the following sites: BC Children's and Women's Hospital, Children's and Women's Hospital Laboratory, Fraser Health Medical Microbiology Laboratory, Island Health, Providence Health Care, Powell River Hospital , St. Paul's Hospital , Vancouver General Hospital, Victoria General Hospital, BCCDC Public Health Laboratory, Interior Health Authority sites and Northern Health Authority sites.

Delays in the reporting of data may cause data to change retrospectively.

For British Columbia, only data from subtyped influenza A specimens are included in the weekly number of influenza detections. The sum of A(H1N1)pdm09, A(H3), and A(UnS) positive results may not equal the sum of total Flu A positive results.



**Figure 2: Number of positive respiratory virus tests reported by participating laboratories in Canada by surveillance week**

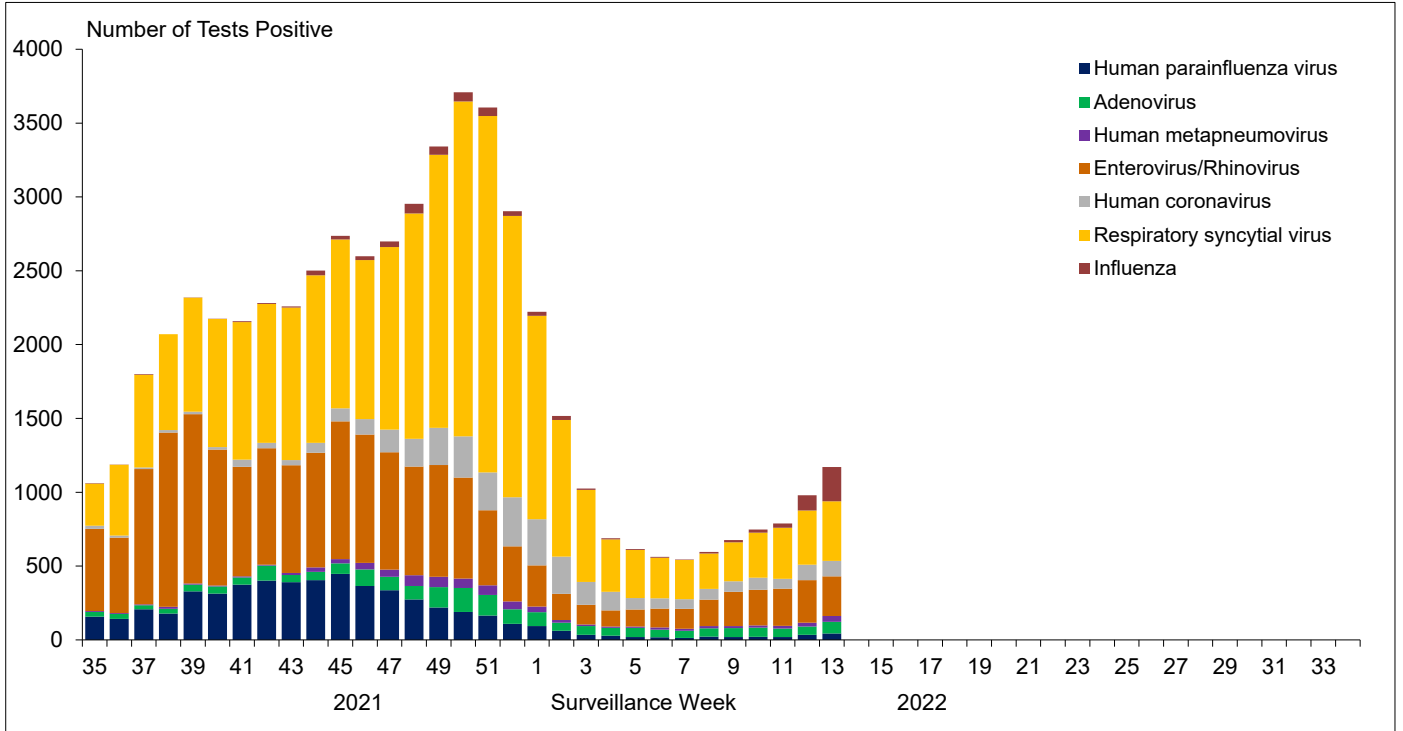


Figure 3: Positive Influenza (Flu) tests (%) in Canada by region by surveillance week

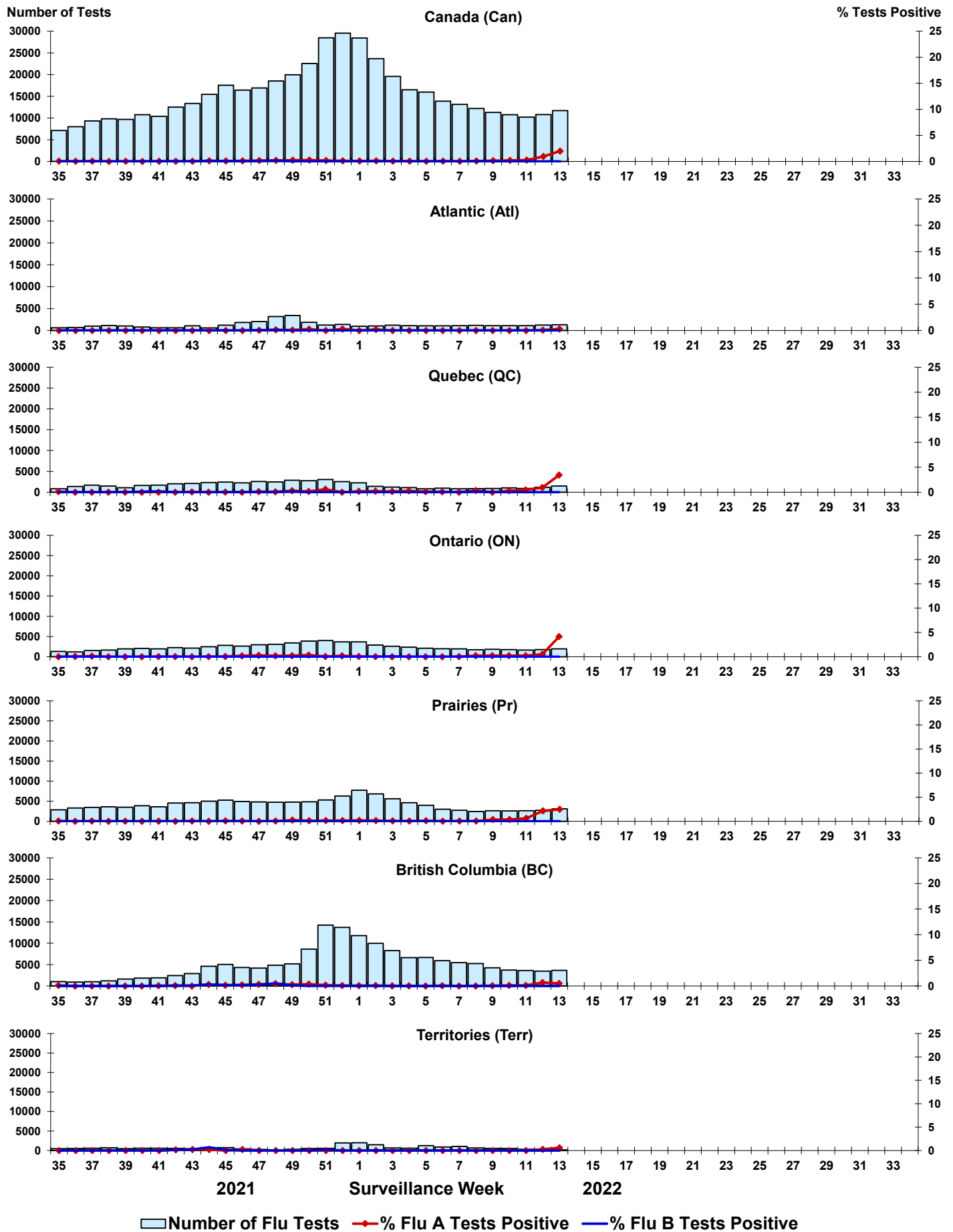


Figure 4: Positive Respiratory syncytial virus (RSV) tests (%) in Canada by region by surveillance week

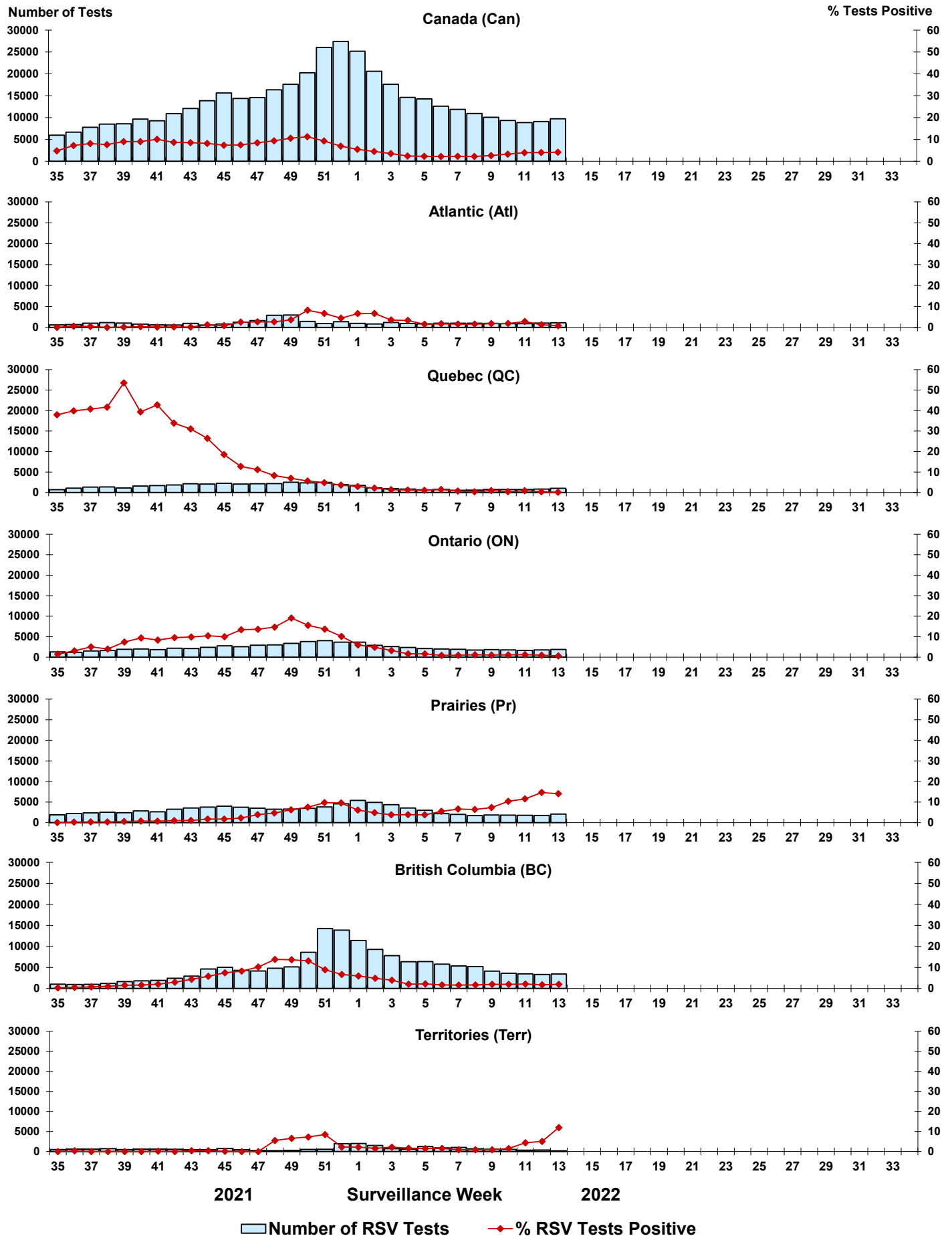


Figure 5: Positive Human parainfluenza virus (HPIV) tests (%) in Canada by region by surveillance week

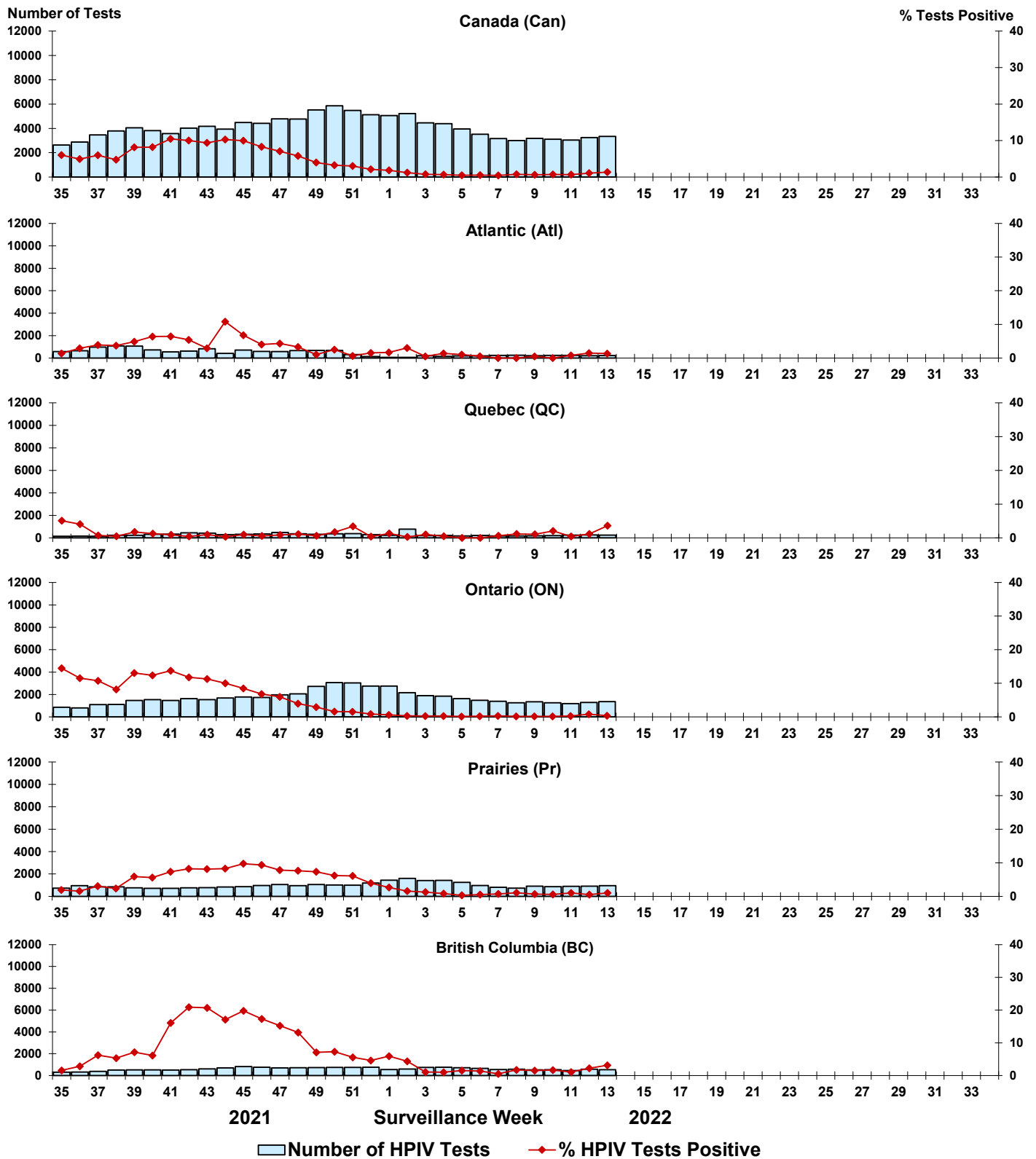




Figure 6: Positive Adenovirus (ADV) tests (%) in Canada by region by surveillance week

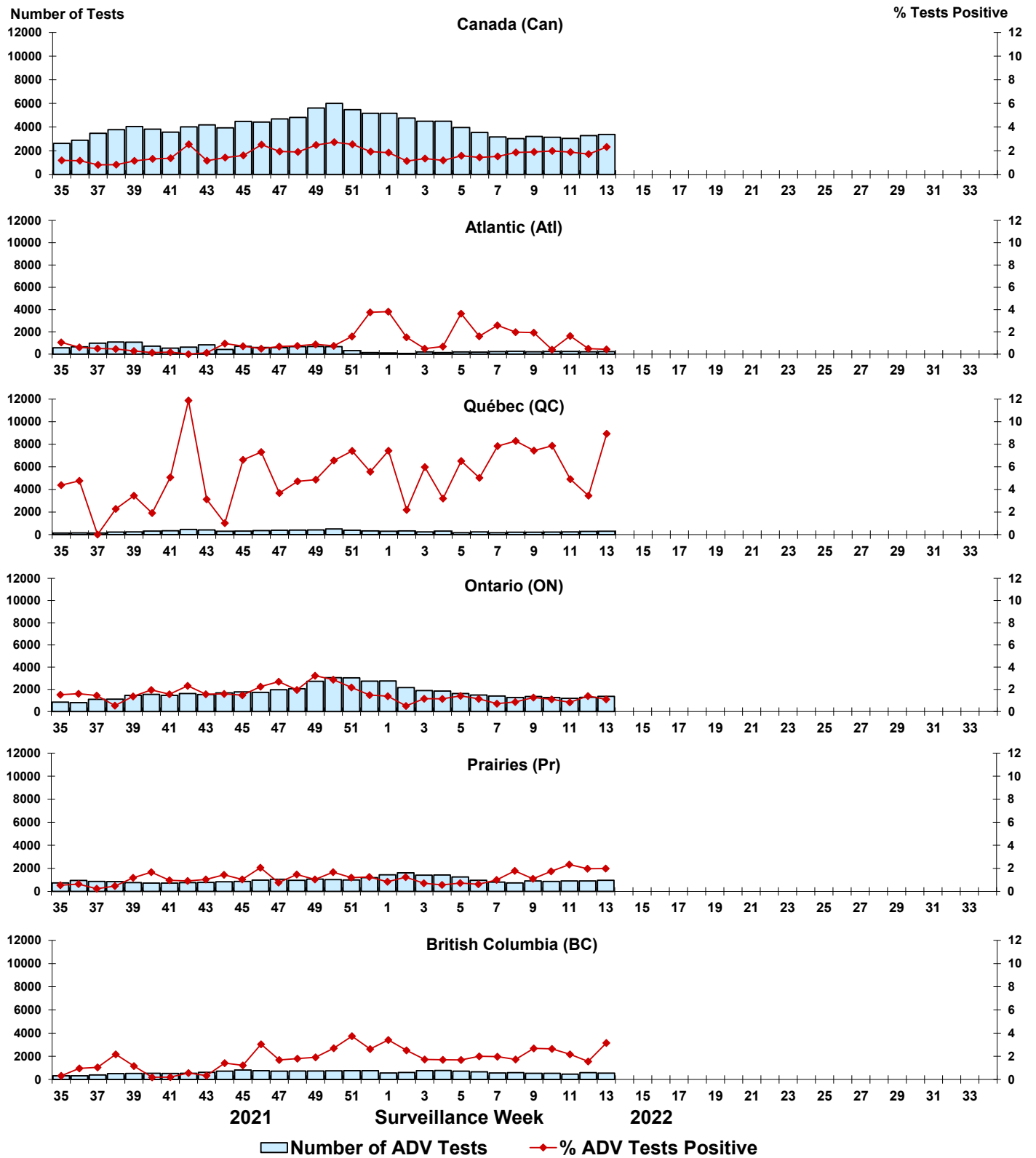


Figure 7: Positive Human metapneumovirus (HMPV) tests (%) in Canada by region by surveillance week

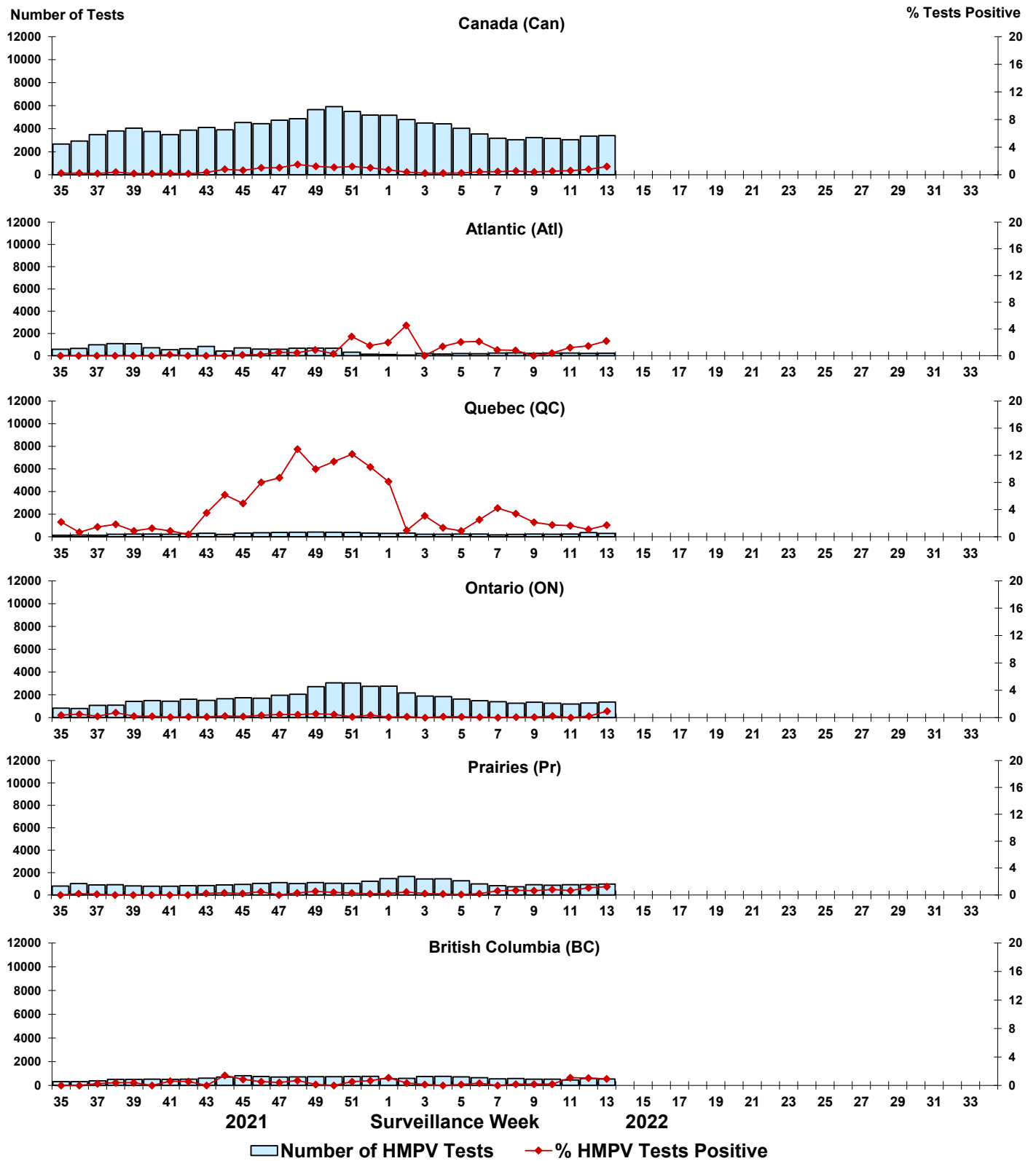


Figure 8: Positive Enterovirus/Rhinovirus (EV/RV) tests (%) in Canada by region by surveillance week

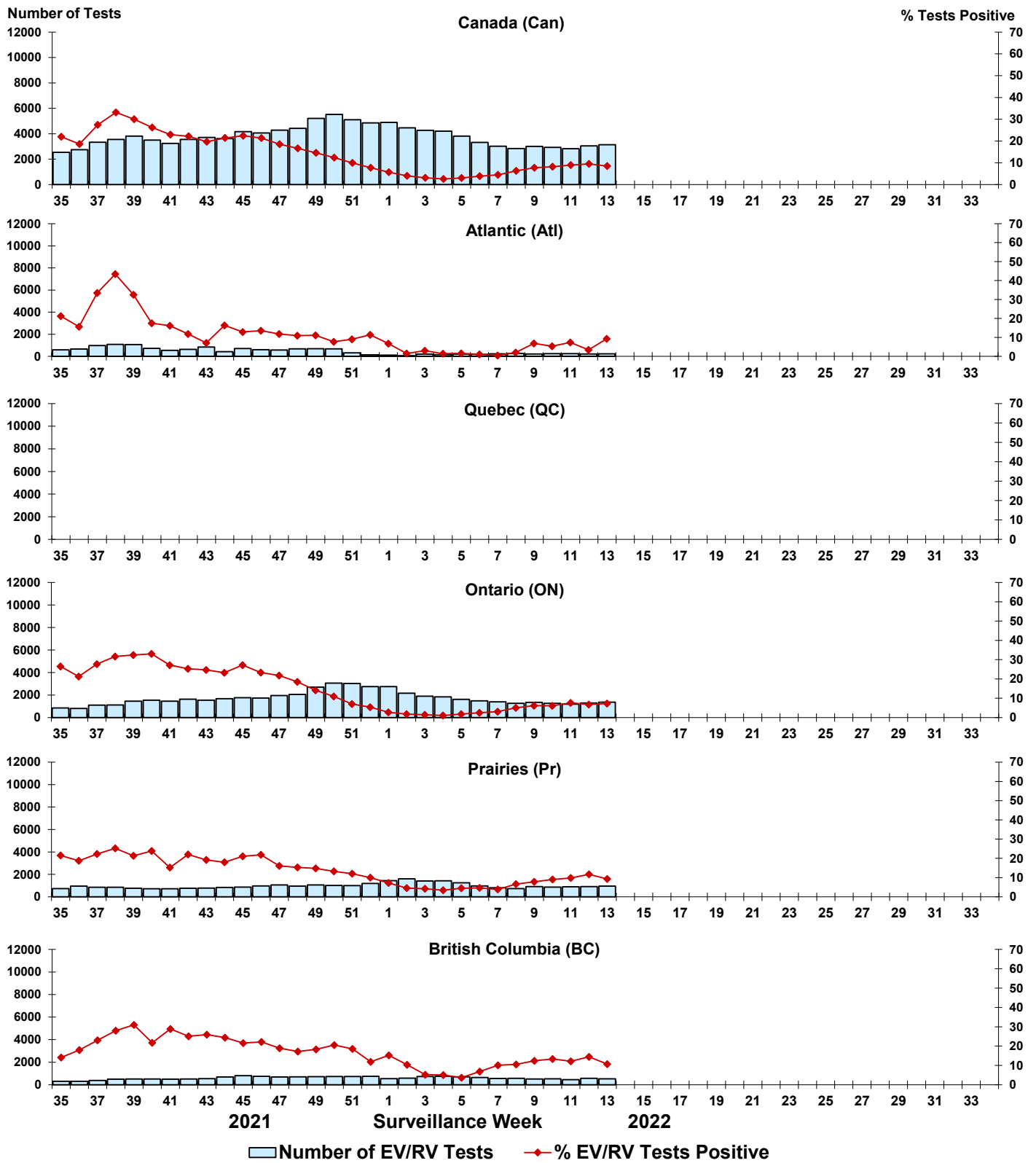


Figure 9: Positive Human coronavirus (HCoV) tests (%) in Canada by region by surveillance week

