

Respiratory Virus Report, Week 17 - ending May 1, 2021

The Respiratory Virus Detection Surveillance System collects data from select laboratories across Canada on the number of tests performed and the number of tests positive for influenza and other respiratory viruses. Data are reported on a weekly basis year-round to the Centre for Immunization and Respiratory Infectious Diseases (CIRID), Public Health Agency of Canada. These data are also summarized in the weekly FluWatch report.

In this Respiratory Virus Report, the number of detections of coronavirus reflects only seasonal human coronaviruses, not the novel pandemic coronavirus (SARS-CoV2) that causes COVID-19. For information on COVID-19, see the [Coronavirus disease \(COVID-19\): Outbreak](#)

Table 1: Respiratory Virus Detections/Isolations for the week ending May 1, 2021 (Reporting Week 202117)

Reporting Laboratory	Flu Tested	A(H1N1)pdm09 Positive	A(H3) Positive	A(UnS) Positive	Total Flu A Positive	Total Flu B Positive	RSV Tested	RSV Positive	PIV Tested	PIV 1 Positive	PIV 2 Positive	PIV 3 Positive	PIV 4 Positive	Other PIV Positive	Adeno Tested	Adeno Positive	hMPV Tested	hMPV Positive	Entero/Rhino Tested	Entero/Rhino Positive	Coron Tested	Coron Positive
Newfoundland	303	0	0	0	0	0	303	0	303	0	0	0	0	0	303	1	303	0	303	16	N.A.	N.A.
Prince Edward Island	77	0	0	0	0	0	77	0	77	0	0	0	0	0	77	1	77	0	77	9	77	0
Nova Scotia	992	0	0	0	0	0	992	0	92	0	0	0	0	0	92	1	92	0	92	3	92	0
New Brunswick	579	0	0	0	0	0	391	0	185	0	0	0	0	0	185	0	185	0	185	2	185	0
Atlantic	1951	0	0	0	0	0	1763	0	657	0	0	0	0	0	657	3	657	0	657	30	354	0
Région Nord-Est	408	0	0	0	0	0	34	0	1	0	0	0	0	0	1	0	1	0	N.A.	N.A.	1	0
Québec-Chaudière-Appalaches	6	0	0	0	0	0	10	0	21	0	0	0	0	0	21	2	21	0	N.A.	N.A.	21	1
Centre-du-Québec	19	0	0	0	0	0	18	0	12	0	0	0	0	0	12	0	12	0	N.A.	N.A.	12	7
Montréal-Laval	360	0	0	0	0	0	362	28	98	1	0	0	0	0	98	2	98	0	N.A.	N.A.	98	4
Ouest du Québec	114	0	0	0	0	0	115	0	0	0	0	0	0	0	0	0	0	0	N.A.	N.A.	0	0
Montérégie	55	0	0	0	0	0	55	0	0	0	0	0	0	0	0	0	0	0	N.A.	N.A.	0	0
Province of Québec	962	0	0	0	0	0	594	28	132	1	0	0	0	0	132	4	132	0	N.A.	N.A.	132	12
P.H.O.L. - Ottawa	21	0	0	0	0	0	21	0	11	0	0	0	0	0	11	0	11	0	11	0	11	0
CHEO - Ottawa	89	0	0	0	0	0	89	0	26	0	0	0	0	0	26	0	26	0	26	4	26	0
P.H.O.L. - Kingston	14	0	0	0	0	0	14	0	9	0	0	0	0	0	9	0	9	0	9	0	9	0
UHN / Mount Sinai Hospital	399	0	0	0	0	0	399	0	49	0	0	0	0	0	49	0	49	0	49	0	49	0
P.H.O.L. - Toronto	213	0	0	0	0	0	213	0	165	0	0	0	0	0	165	2	165	0	165	0	165	0
Sick Kids Hospital - Toronto	36	0	0	0	0	0	0	0	36	0	0	0	0	0	36	0	36	0	36	2	36	0
Sunnybrook & Women's College HSC	N.A.	N.A.	N.A.	N.A.	N.A.	N.A.	N.A.	N.A.	N.A.	N.A.	N.A.	N.A.	N.A.	N.A.	N.A.	N.A.	N.A.	N.A.	N.A.	N.A.	N.A.	N.A.
P.H.O.L. - Sault Ste. Marie	3	0	0	0	0	0	3	0	3	0	0	0	0	0	3	0	3	0	3	0	3	0
P.H.O.L. - Timmins	1	0	0	0	0	0	1	0	0	0	0	0	0	0	0	0	0	0	0	0	0	0
St. Joseph's - London	N.A.	N.A.	N.A.	N.A.	N.A.	N.A.	N.A.	N.A.	N.A.	N.A.	N.A.	N.A.	N.A.	N.A.	N.A.	N.A.	N.A.	N.A.	N.A.	N.A.	N.A.	N.A.
P.H.O.L. - London	11	0	0	0	0	0	11	0	5	0	0	0	0	0	5	0	5	0	5	0	5	0
P.H.O.L. - Orillia	2	0	0	0	0	0	2	0	1	0	0	0	0	0	1	0	1	0	1	0	1	0
P.H.O.L. - Thunder Bay	0	0	0	0	0	0	0	0	0	0	0	0	0	0	0	0	0	0	0	0	0	0
P.H.O.L. - Sudbury	4	0	0	0	0	0	4	0	0	0	0	0	0	0	0	0	0	0	0	0	0	0
P.H.O.L. - Hamilton	14	0	0	0	0	0	14	0	9	0	0	0	0	0	9	0	9	0	9	0	9	0
P.H.O.L. - Peterborough	7	0	0	0	0	0	7	0	6	0	0	0	0	0	6	0	6	0	6	0	6	0
St. Joseph's - Hamilton	N.A.	N.A.	N.A.	N.A.	N.A.	N.A.	N.A.	N.A.	N.A.	N.A.	N.A.	N.A.	N.A.	N.A.	N.A.	N.A.	N.A.	N.A.	N.A.	N.A.	N.A.	N.A.
Province of Ontario	814	0	0	0	0	0	778	0	320	0	0	0	0	0	320	2	320	0	320	6	320	0
Province of Manitoba	1844	0	0	0	0	0	1844	0	19	0	0	0	0	0	19	0	19	0	19	4	91	0
Province of Saskatchewan	10939	0	0	1	1	0	2196	0	31	0	0	0	0	0	31	1	31	0	31	4	31	0
Province of Alberta	2615	0	0	0	0	0	611	0	611	0	0	0	0	0	611	4	611	0	611	55	611	2
Prairies	15398	0	0	1	1	0	4651	0	661	0	0	0	0	0	661	5	733	0	661	63	733	2
British Columbia	2334	0	0	0	0	0	2307	0	423	0	0	0	0	0	429	2	381	0	423	21	405	0
Yukon	113	0	0	0	0	0	113	0	N.A.	N.A.	N.A.	N.A.	N.A.	N.A.	N.A.	N.A.	N.A.	N.A.	N.A.	N.A.	N.A.	N.A.
Northwest Territories	6	0	0	0	0	0	6	0	6	0	0	0	0	0	6	1	6	0	6	0	6	0
Nunavut	2	0	0	0	0	0	0	0	0	0	0	0	0	0	0	0	0	0	0	0	0	0
Territories	121	0	0	0	0	0	119	0	6	0	0	0	0	0	6	1	6	0	6	0	6	0
CANADA	21580	0	0	1	1	0	10212	28	2199	1	0	0	0	0	2205	17	2229	0	2067	120	1950	14

The data in the RVDSS report represent surveillance data available at the time of writing. Missing data are denoted by N.A.

Specimens from Yukon (YT), Northwest Territories (NT) and Nunavut (NU) are sent to reference laboratories in other provinces and reported results reflect specimens identified as originating from YT, NT or NU.

Results from British Columbia comprise of specimens from the following sites: BC Children's and Women's Hospital, Fraser Health Medical Microbiology Laboratory, Island Health, Providence Health Care, Powell River Hospital, St. Paul's Hospital, Vancouver General Hospital, Victoria General Hospital, BCCDC Public Health Laboratory, Interior Health Authority sites and Northern Health Authority sites.

Delays in the reporting of data may cause data to change retrospectively.

Influenza co-detections may cause the sum of A(H1N1)pdm09, A(H3), and A(UnS) positive results to exceed the sum of Total Flu A Positive results.

Table 2: Respiratory Virus Detections/Isolations for the period August 23, 2020 - May 1, 2021 (Reporting Weeks 202035-202117)

Reporting Laboratory	Flu Tested	A(H1N1)pdm09 Positive	A(H3) Positive	A(UnS) Positive	Total Flu A Positive	Total Flu B Positive	RSV Tested	RSV Positive	PIV Tested	PIV 1 Positive	PIV 2 Positive	PIV 3 Positive	PIV 4 Positive	Other PIV Positive	Adeno Tested	Adeno Positive	hMPV Tested	hMPV Positive	Entero/Rhino Tested	Entero/Rhino Positive	Coron Tested	Coron Positive
Newfoundland	11263	0	0	0	0	0	11263	10	11263	1	0	2	0	0	11276	51	10676	2	11263	2018	N.A.	N.A.
Prince Edward Island	3533	0	0	0	0	0	3533	4	3529	3	0	0	1	0	3529	34	3529	0	3529	399	3529	1
Nova Scotia	6477	0	0	0	0	0	6480	0	659	0	10	0	1	0	659	9	659	1	659	73	686	0
New Brunswick	53026	0	0	0	1	1	19363	0	1162	0	0	0	0	0	1153	9	1153	0	1153	53	1108	0
Atlantic	74299	0	0	0	0	1	40639	14	16613	4	10	2	2	0	16617	103	16017	3	16604	2543	5323	1
Région Nord-Est	5019	0	0	0	0	0	1032	1	3	0	0	0	0	0	3	1	3	0	N.A.	N.A.	3	0
Québec-Chaudière-Appalaches	721	0	0	1	1	0	806	0	603	0	0	0	0	0	605	34	600	0	N.A.	N.A.	583	27
Centre-du-Québec	866	0	0	0	0	0	874	1	321	0	0	1	0	0	319	18	321	0	N.A.	N.A.	318	9
Montréal-Laval	7826	0	0	0	0	0	6870	99	3836	2	0	2	0	0	3890	134	3820	2	N.A.	N.A.	3820	68
Ouest du Québec	1933	0	0	0	0	0	1876	0	0	0	0	0	0	0	0	0	0	0	N.A.	N.A.	0	0
Montérégie	865	0	0	0	0	0	865	1	0	0	0	0	0	0	0	0	0	0	N.A.	N.A.	0	0
Province of Québec	17230	0	0	1	1	0	12323	102	4763	2	0	3	0	0	4817	187	4744	2	N.A.	N.A.	4724	104
P.H.O.L. - Ottawa	536	0	0	0	0	0	536	1	442	0	0	0	0	0	442	0	441	0	442	22	441	1
CHEO - Ottawa	4739	0	0	1	1	1	4336	5	751	0	0	0	0	0	751	12	751	1	751	85	751	1
P.H.O.L. - Kingston	823	0	0	1	1	0	823	0	537	0	0	0	0	0	537	4	531	0	537	106	531	0
UHN / Mount Sinai Hospital	12342	2	0	2	4	1	12273	6	10191	3	2	3	8	0	8565	9	10151	8	9948	98	7987	6
P.H.O.L. - Toronto	5967	0	0	0	0	0	5964	2	5132	0	0	0	0	3	5133	14	5131	1	5132	151	5131	5
Sick Kids Hospital - Toronto	1166	0	0	0	0	0	0	0	1166	0	0	0	0	0	1166	17	1166	0	1166	114	1166	1
Sunnybrook & Women's College HSC	0	0	0	0	0	0	0	0	0	0	0	0	0	0	0	0	0	0	0	0	0	0
P.H.O.L. - Sault Ste. Marie	160	0	0	2	2	0	158	0	97	0	0	0	0	0	97	0	97	0	97	6	97	0
P.H.O.L. - Timmins	617	0	0	0	0	0	617	0	165	0	0	0	0	0	165	0	164	0	165	31	164	0
St. Joseph's - London	218	0	0	0	0	0	218	0	55	0	0	0	0	0	55	0	55	0	91	8	36	0
P.H.O.L. - London	1856	1	0	5	6	2	1846	0	1265	0	0	0	0	2	1265	2	1260	0	1265	127	1260	3
P.H.O.L. - Orillia	388	0	0	1	1	0	386	0	192	0	0	0	0	0	192	1	192	0	192	12	192	0
P.H.O.L. - Thunder Bay	399	0	0	0	0	0	399	0	385	0	0	0	0	0	386	3	385	0	385	137	385	0
P.H.O.L. - Sudbury	464	0	0	0	0	0	462	0	325	0	0	0	0	0	325	2	325	0	325	28	325	0
P.H.O.L. - Hamilton	1466	0	0	0	0	0	1411	1	1180	0	0	0	0	0	1180	2	1180	0	1180	98	1180	0
P.H.O.L. - Peterborough	483	0	0	1	1	0	437	0	333	0	0	0	0	0	333	0	332	0	333	24	332	0
St. Joseph's - Hamilton	8756	0	0	0	0	0	8756	2	8756	0	0	1	0	0	8756	19	8756	0	8756	436	0	0
Province of Ontario	40380	3	0	13	16	4	38622	17	30972	3	2	4	8	5	29348	85	30917	10	30765	1483	19978	17
Manitoba	47539	0	0	2	2	1	47529	68	2726	0	1	1	0	0	2726	18	3159	1	2726	153	3159	4
Province of Saskatchewan	168493	0	0	1	1	0	24188	4	1716	0	0	1	1	0	1716	12	1716	4	1716	175	1716	8
Province of Alberta	120236	4	0	6	10	0	75768	0	75768	2	18	3	7	0	75768	141	75768	11	75768	6371	75768	26
Prairies	336268	4	0	9	13	1	147485	72	80210	2	19	5	8	0	80210	171	80643	16	80210	6699	80643	38
British Columbia	80855	3	8	1	10	8	80389	6	16643	1	4	1	11	5	17189	93	16991	59	16842	1396	12735	19
Yukon	4832	0	0	8	8	7	4770	4	N.A.	N.A.	N.A.	N.A.	N.A.	N.A.	N.A.	N.A.	N.A.	N.A.	N.A.	N.A.	N.A.	N.A.
Northwest Territories	1145	0	0	0	0	0	1103	0	1103	0	0	0	1	0	1103	10	1103	1	1103	320	1103	1
Nunavut	1118	0	0	0	0	0	1098	0	1098	3	1	0	0	0	1098	25	1098	5	1098	281	188	0
Territories	7095	0	0	8	8	7	6971	4	2201	3	1	0	1	0	2201	35	2201	6	2201	601	1291	1
CANADA	556127	10	8	32	48	21	326429	215	151402	15	36	15	30	10	150382	674	151513	96	146622	12722	124694	180

The data in the RVDSS report represent surveillance data available at the time of writing. Missing data are denoted by N.A.

Specimens from YT, NT and NU are sent to reference laboratories in other provinces and reported results reflect specimens identified as originating from YT, NT or NU.

Results from British Columbia comprise of specimens from the following sites: BC Children's and Women's Hospital, Children's and Women's Hospital Laboratory, Fraser Health Medical Microbiology Laboratory, Island Health, Providence Health Care, Powell River Hospital, St. Paul's Hospital, Vancouver General Hospital, Victoria General Hospital, BCCDC Public Health Laboratory, Interior Health Authority sites and Northern Health Authority sites.

Delays in the reporting of data may cause data to change retrospectively.

Due to reporting delays, the sum of weekly report totals do not add up to cumulative totals.

Influenza co-detections may cause the sum of A(H1N1)pdm09, A(H3), and A(UnS) positive results to exceed the sum of Total Flu A Positive results.

Figure 1: Number positive laboratory tests for other respiratory viruses by report week, Canada, 2020-21

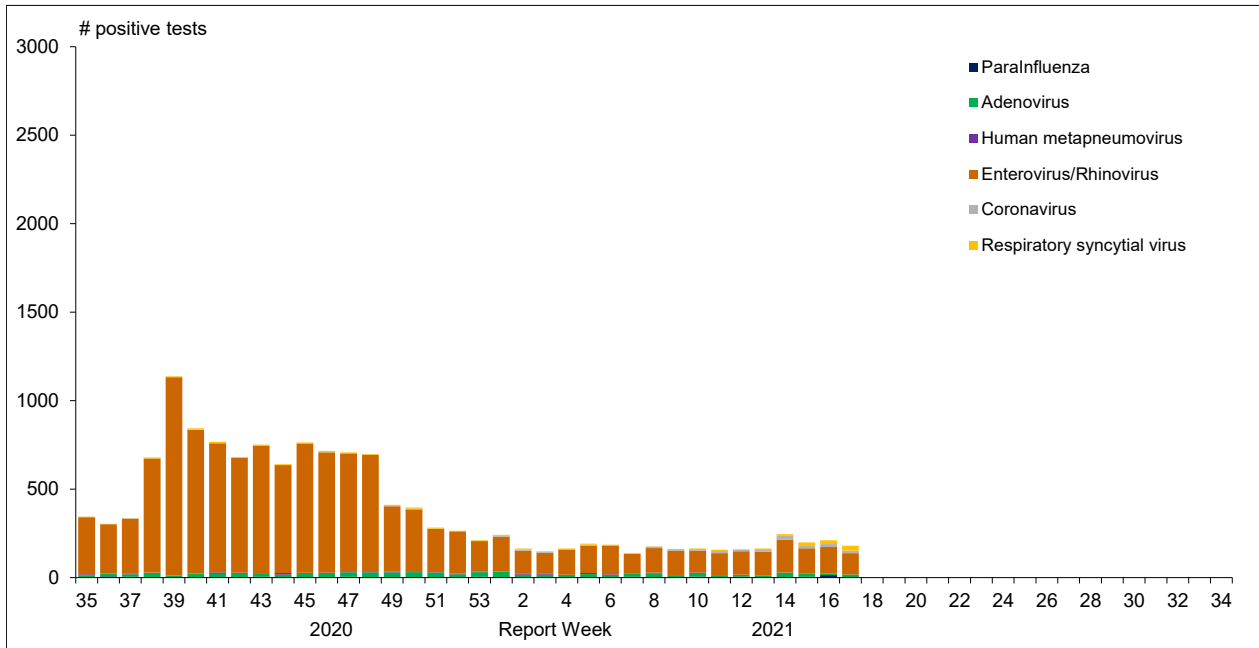


Figure 2 : Positive Influenza Tests (%) in Canada by Region by Week of Report

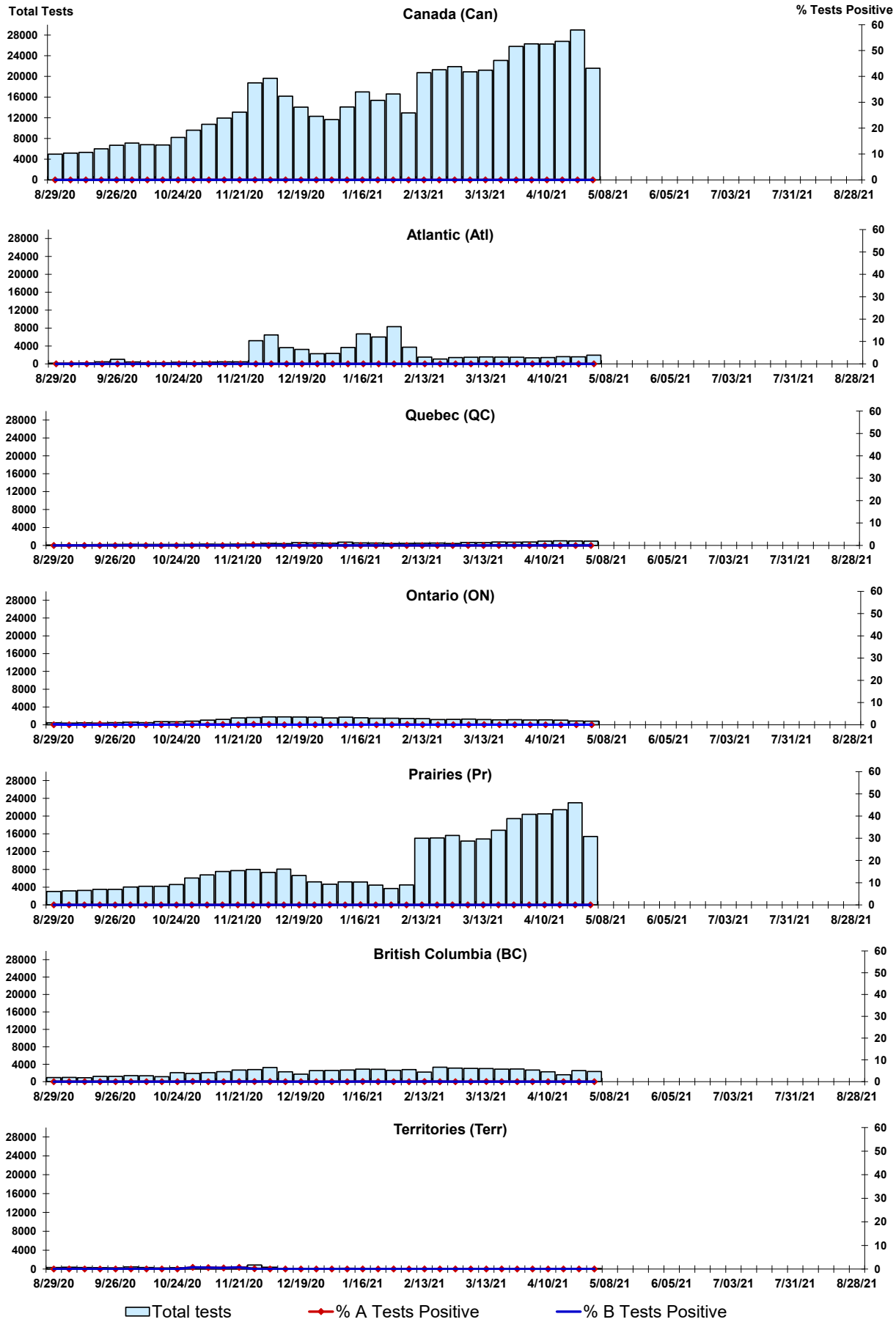


Figure 3: Positive Respiratory syncytial virus (RSV) Tests (%) in Canada by Region by Week of Report

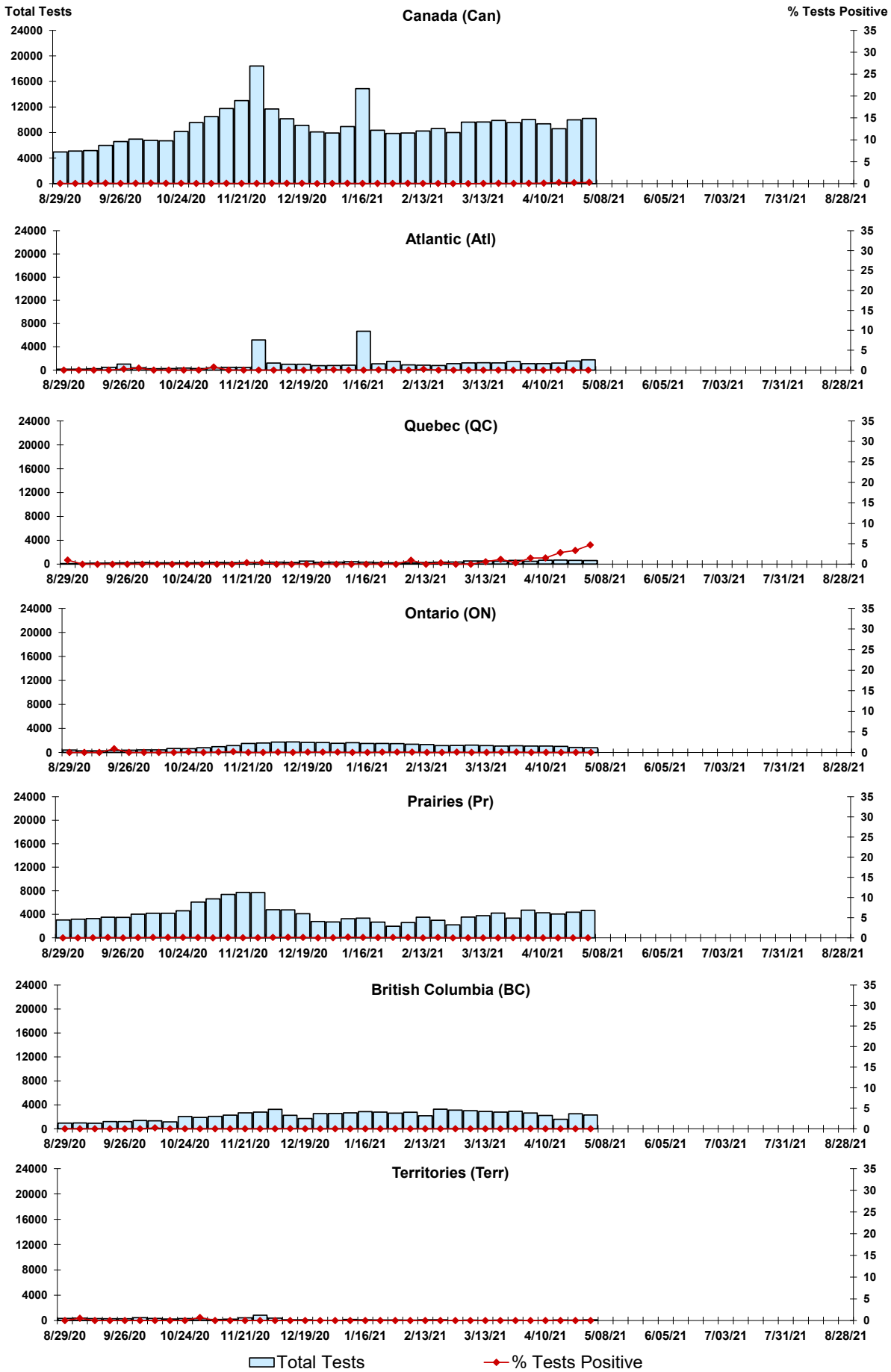
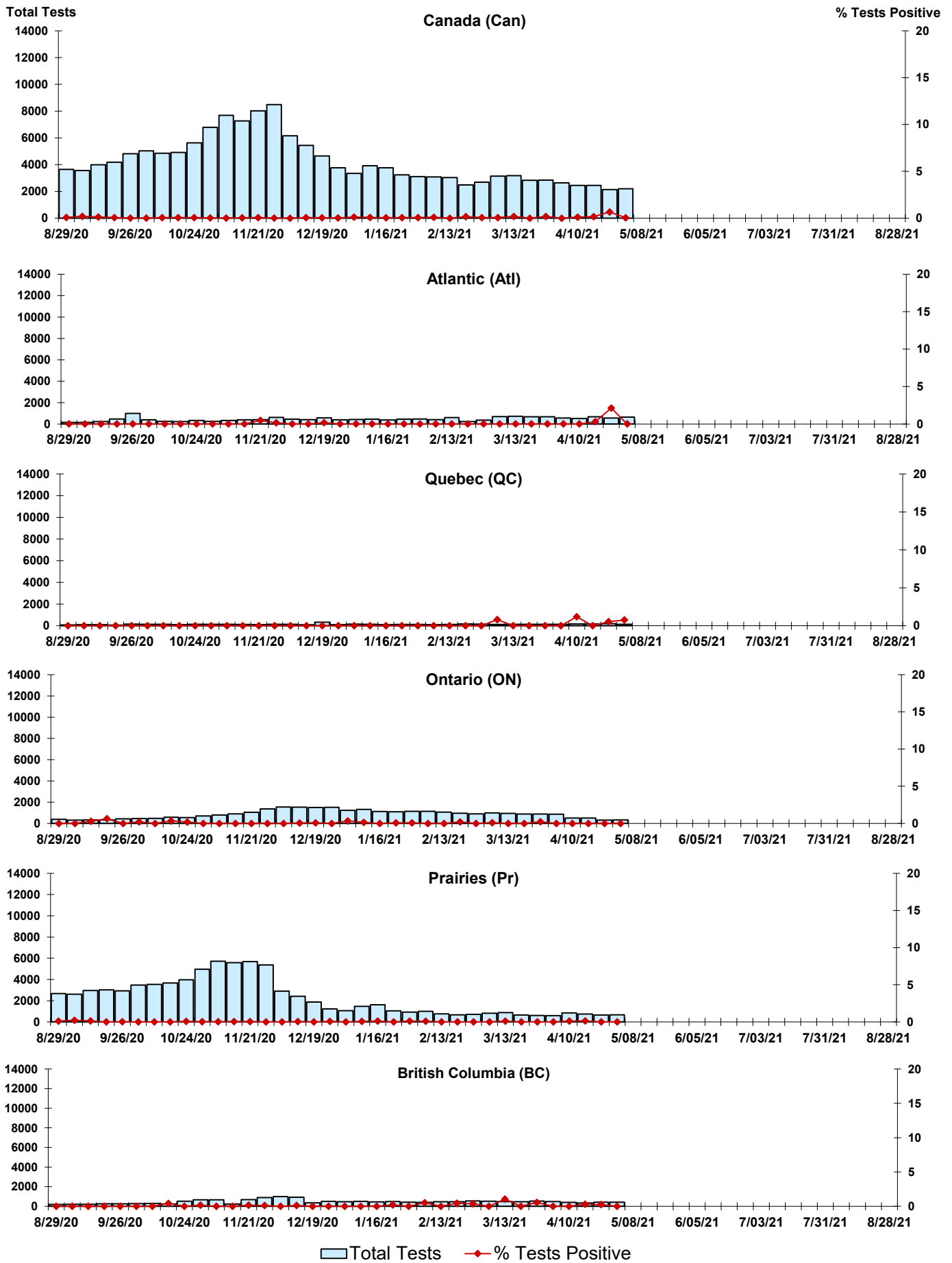


Figure 4: Positive Parainfluenza (PIV) Tests (%) in Canada by Region by Week of Report



Legend: Total Tests (light blue bar), % Tests Positive (red diamond)

Figure 5: Positive Adenovirus (adeno) Tests (%) in Canada by Region by Week of Report

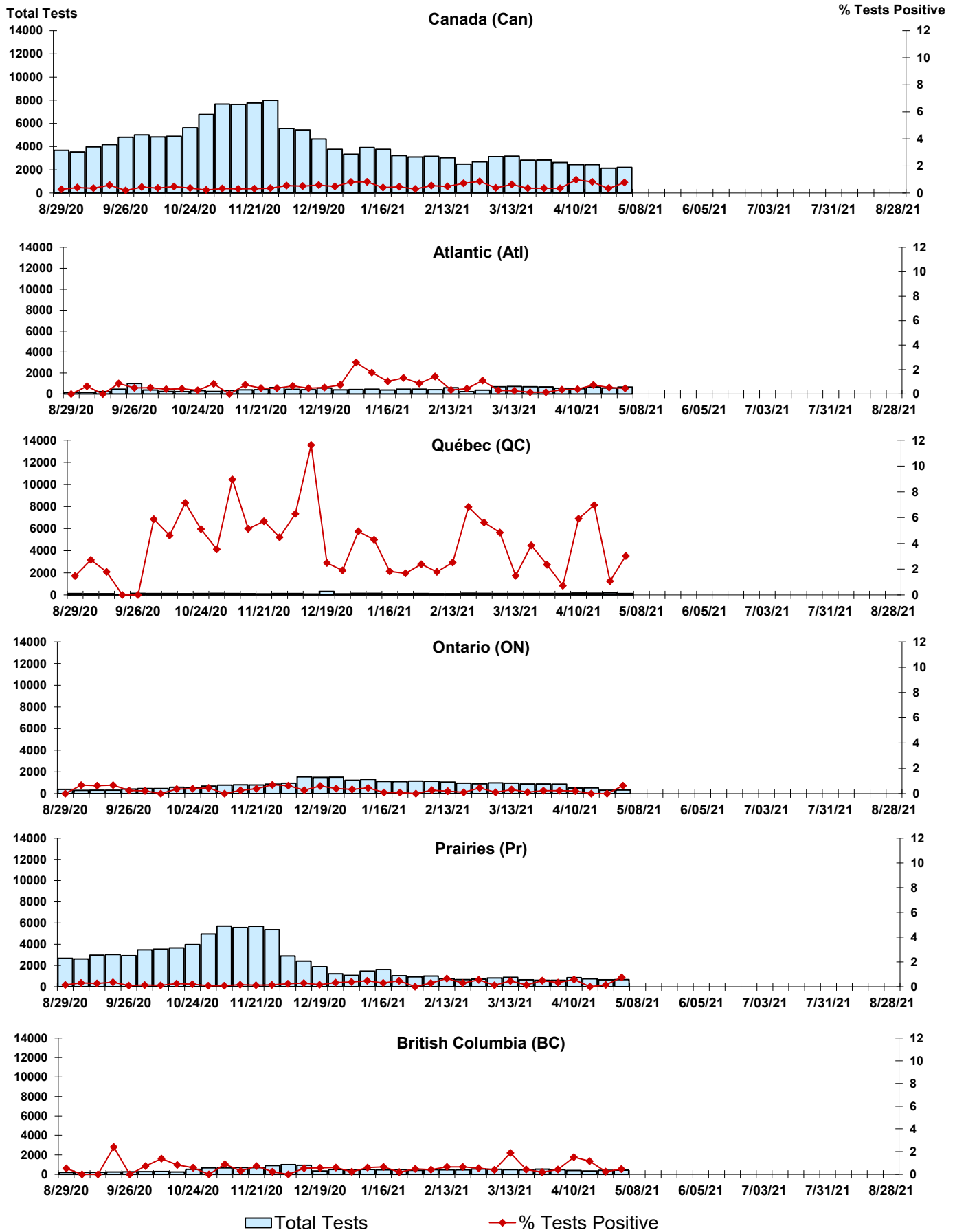
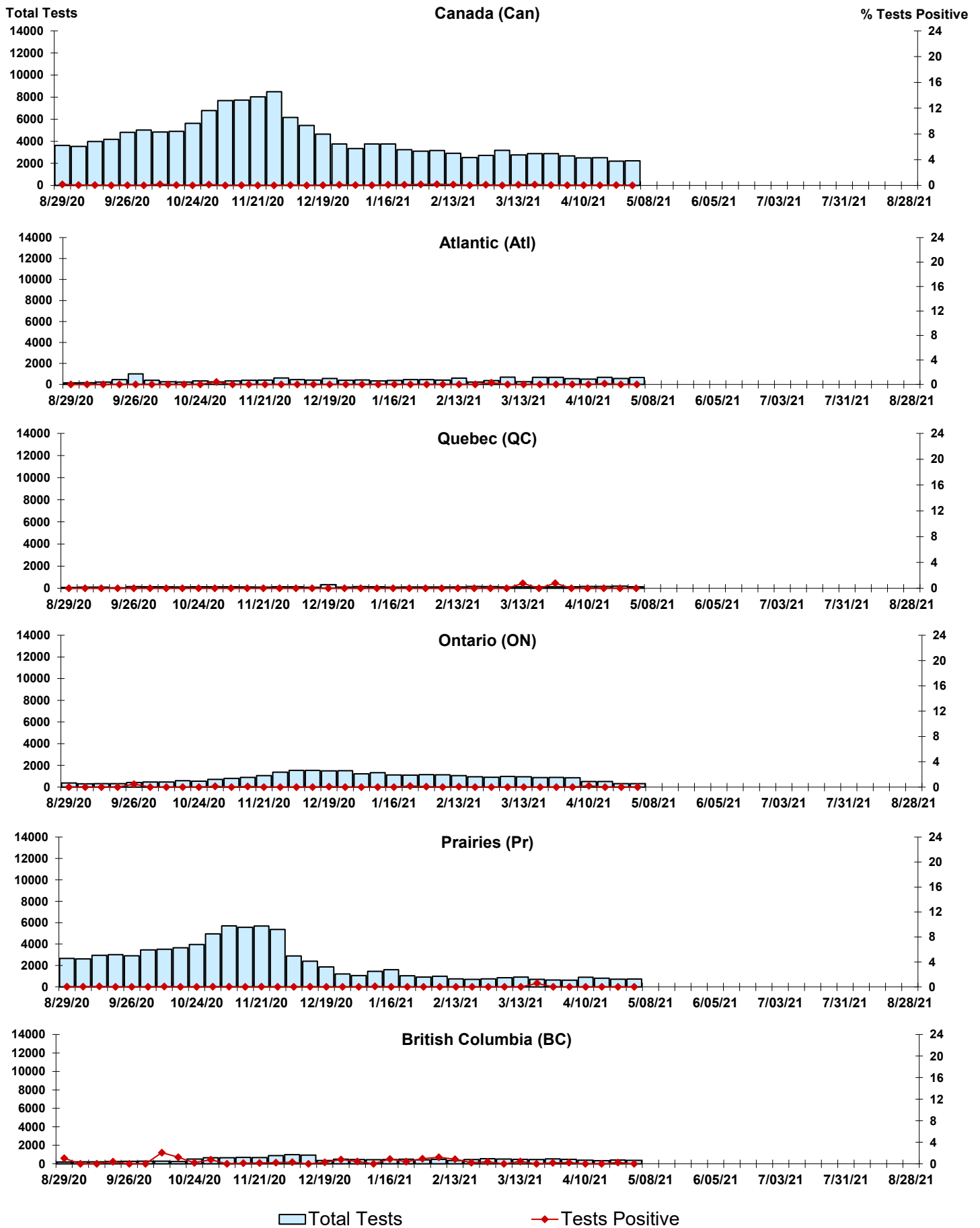


Figure 6: Positive human metapneumovirus (hMPV) Tests (%) in Canada by Region by Week of Report



Legend: Total Tests (light blue bar), Tests Positive (red diamond with line)

Figure 7: Positive Enterovirus/Rhinovirus (entero/rhino) Tests (%) in Canada by Region by Week of Report

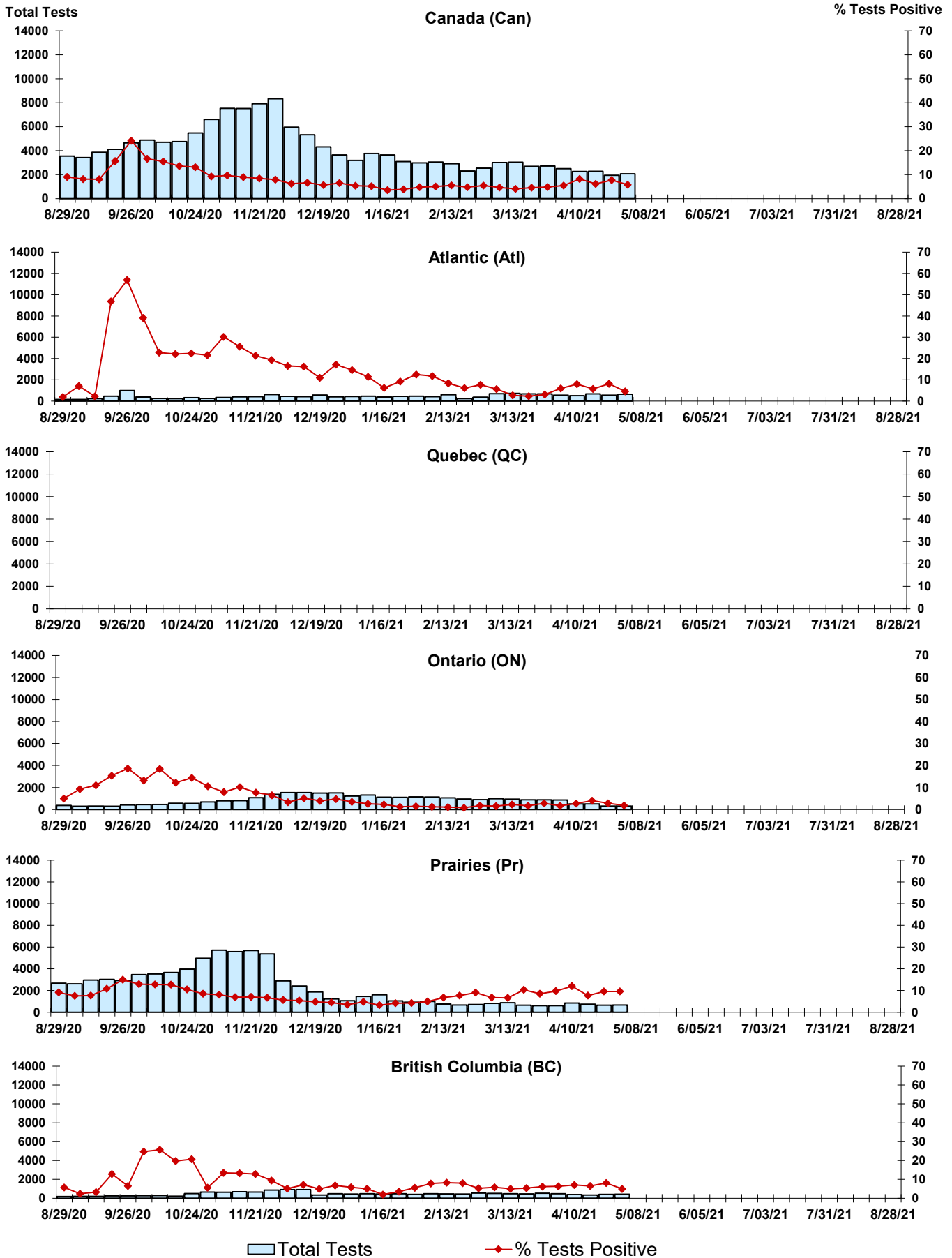
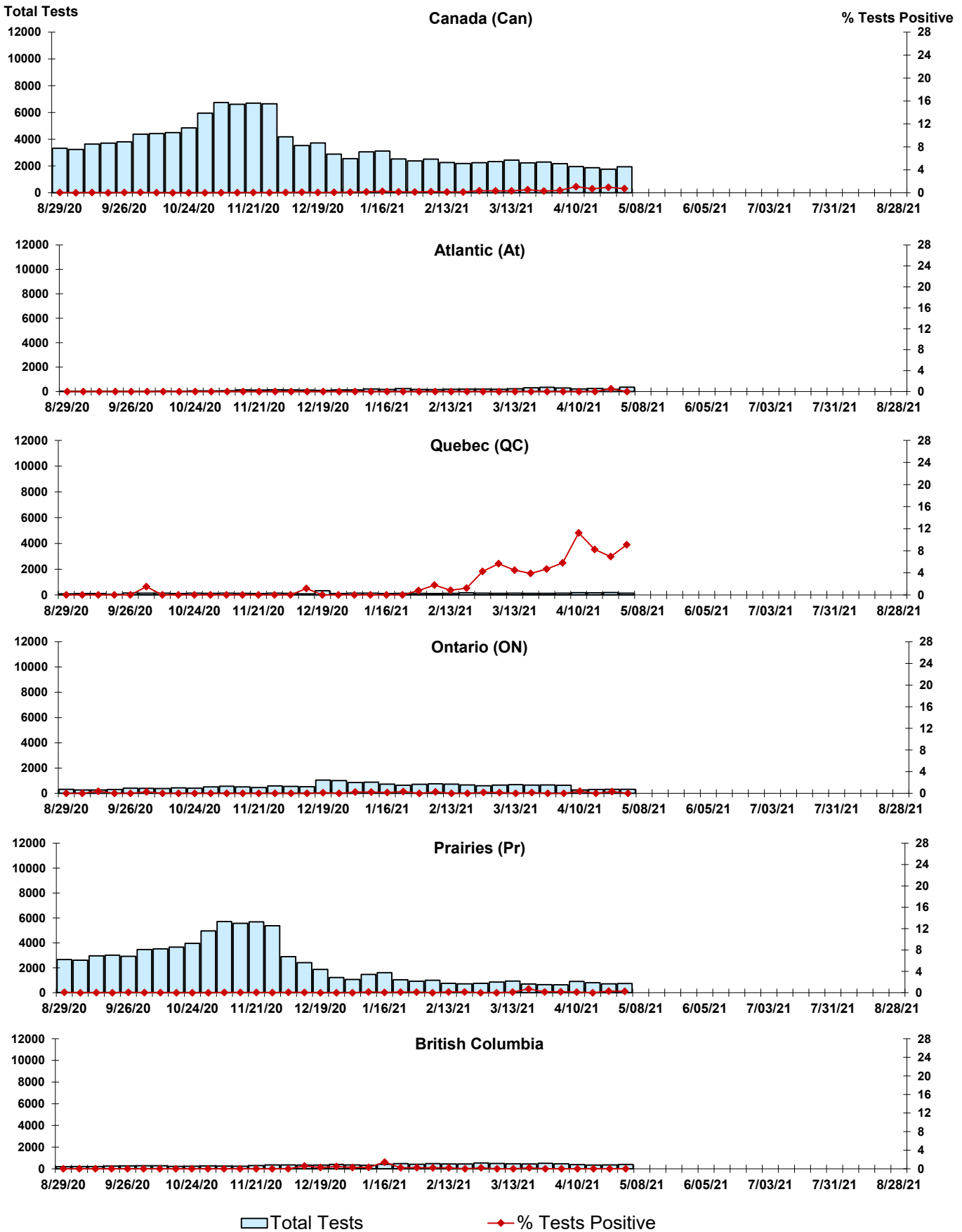


Figure 8: Positive Coronavirus (coron) Tests (%) in Canada by Region by Week of Report



Abbreviations:

A(H1N1)pdm09: Influenza A(H1N1)pdm09

A(H3): Influenza A(H3N2)

A (UnS): Influenza A (Unsubtyped)

Adeno: Adenovirus

CHEO: Children's Hospital of Eastern Ontario

Coron: Coronavirus

Entero: Enterovirus

hMPV: human metapneumovirus

HSC: Health Sciences Centre

N.A.: Not Applicable

P.H.L.: Public Health Laboratory

P.H.O.L.: Public Health Ontario Laboratory

PIV: Parainfluenza

Rhino: Rhinovirus

RSV: Respiratory syncytial virus

UHN: University Health Network

Notes:

The data in the RVDSS report represent surveillance data available at the time of writing. Missing data are denoted by N.A.

Specimens from Yukon (YT), Northwest Territories (NT) and Nunavut (NU) are sent to reference laboratories in other provinces. Results reported for the Territories reflect the number of specimens that are identified as originating from YT, NT or NU.

Delays in the reporting of data may cause data to change retrospectively.

Due to reporting delays, the sum of weekly report totals do not add up to cumulative totals.