

# Respiratory Virus Report, Week 19 - ending May 15, 2021

The Respiratory Virus Detection Surveillance System collects data from select laboratories across Canada on the number of tests performed and the number of tests positive for influenza and other respiratory viruses. Data are reported on a weekly basis year-round to the Centre for Immunization and Respiratory Infectious Diseases (CIRID), Public Health Agency of Canada. These data are also summarized in the weekly FluWatch report.

In this Respiratory Virus Report, the number of detections of coronavirus reflects only seasonal human coronaviruses, not the novel pandemic coronavirus (SARS-CoV2) that causes COVID-19. For information on COVID-19, see the [Coronavirus disease \(COVID-19\): Outbreak](#)

**Table 1: Respiratory Virus Detections/Isolations for the week ending May 15, 2021 (Reporting Week 202119)**

Reporting Laboratory	Flu Tested	A(H1N1)pdm09 Positive	A(H3) Positive	A(UnS) Positive	Total Flu A Positive	Total Flu B Positive	RSV Tested	RSV Positive	PIV Tested	PIV 1 Positive	PIV 2 Positive	PIV 3 Positive	PIV 4 Positive	Other PIV Positive	Adeno Tested	Adeno Positive	hMPV Tested	hMPV Positive	Entero/Rhino Tested	Entero/Rhino Positive	Coron Tested	Coron Positive
Newfoundland	336	0	0	0	0	0	336	0	336	0	0	0	0	0	337	0	336	0	336	30	N.A.	N.A.
Prince Edward Island	82	0	0	0	0	0	82	0	82	0	0	0	0	0	82	1	82	0	82	21	82	0
Nova Scotia	251	0	0	0	0	0	251	0	137	0	0	0	0	0	137	0	137	0	137	3	137	0
New Brunswick	242	0	0	0	0	0	144	0	13	0	0	0	0	0	13	0	13	0	13	2	13	0
<b>Atlantic</b>	<b>911</b>	<b>0</b>	<b>0</b>	<b>0</b>	<b>0</b>	<b>0</b>	<b>813</b>	<b>0</b>	<b>568</b>	<b>0</b>	<b>0</b>	<b>0</b>	<b>0</b>	<b>0</b>	<b>569</b>	<b>1</b>	<b>568</b>	<b>0</b>	<b>568</b>	<b>56</b>	<b>232</b>	<b>0</b>
Région Nord-Est	341	0	0	0	0	0	15	0	1	0	0	0	0	0	1	0	1	0	N.A.	N.A.	1	0
Québec-Chaudière-Appalaches	2	0	0	0	0	0	32	0	28	0	0	0	0	0	28	1	28	0	N.A.	N.A.	28	0
Centre-du-Québec	7	0	0	0	0	0	7	1	10	0	0	0	0	0	10	0	10	0	N.A.	N.A.	10	1
Montréal-Laval	367	0	0	0	0	0	368	13	121	0	0	1	0	0	121	5	121	0	N.A.	N.A.	121	9
Ouest du Québec	129	0	0	0	0	0	129	0	0	0	0	0	0	0	0	0	0	0	N.A.	N.A.	0	0
Montérégie	97	0	0	0	0	0	97	0	0	0	0	0	0	0	0	0	0	0	N.A.	N.A.	0	0
<b>Province of Québec</b>	<b>943</b>	<b>0</b>	<b>0</b>	<b>0</b>	<b>0</b>	<b>0</b>	<b>648</b>	<b>14</b>	<b>160</b>	<b>0</b>	<b>0</b>	<b>1</b>	<b>0</b>	<b>0</b>	<b>160</b>	<b>6</b>	<b>160</b>	<b>0</b>	<b>N.A.</b>	<b>N.A.</b>	<b>160</b>	<b>10</b>
P.H.O.L. - Ottawa	15	0	0	0	0	0	15	0	13	0	0	0	0	0	13	0	13	0	13	0	13	0
CHEO - Ottawa	75	0	0	0	0	0	75	0	28	0	0	0	0	0	28	0	28	0	28	2	0	0
P.H.O.L. - Kingston	10	0	0	0	0	0	10	0	10	0	0	0	0	0	10	0	10	0	10	2	10	0
UHN / Mount Sinai Hospital	390	0	0	0	0	0	390	0	47	0	0	0	0	0	47	0	47	2	47	1	47	0
P.H.O.L. - Toronto	125	0	0	0	0	0	125	0	116	0	0	0	0	0	116	0	116	0	116	3	116	0
Sick Kids Hospital - Toronto	N.A.	N.A.	N.A.	N.A.	N.A.	N.A.	N.A.	N.A.	N.A.	N.A.	N.A.	N.A.	N.A.	N.A.	N.A.	N.A.	N.A.	N.A.	N.A.	N.A.	N.A.	N.A.
Sunnybrook & Women's College HSC	N.A.	N.A.	N.A.	N.A.	N.A.	N.A.	N.A.	N.A.	N.A.	N.A.	N.A.	N.A.	N.A.	N.A.	N.A.	N.A.	N.A.	N.A.	N.A.	N.A.	N.A.	N.A.
P.H.O.L. - Sault Ste. Marie	4	0	0	0	0	0	4	0	1	0	0	0	0	0	1	0	1	0	1	0	1	0
P.H.O.L. - Timmins	1	0	0	0	0	0	1	0	0	0	0	0	0	0	0	0	0	0	0	0	0	0
St. Joseph's - London	N.A.	N.A.	N.A.	N.A.	N.A.	N.A.	N.A.	N.A.	N.A.	N.A.	N.A.	N.A.	N.A.	N.A.	N.A.	N.A.	N.A.	N.A.	N.A.	N.A.	N.A.	N.A.
P.H.O.L. - London	15	0	0	0	0	0	15	0	8	0	0	0	0	0	8	0	8	0	8	0	8	0
P.H.O.L. - Orillia	2	0	0	0	0	0	2	0	2	0	0	0	0	0	2	0	2	0	2	0	2	0
P.H.O.L. - Thunder Bay	5	0	0	0	0	0	5	0	2	0	0	0	0	0	2	0	2	0	2	0	2	0
P.H.O.L. - Sudbury	3	0	0	0	0	0	3	0	0	0	0	0	0	0	0	0	0	0	0	0	0	0
P.H.O.L. - Hamilton	12	0	0	0	0	0	12	0	8	0	0	0	0	0	8	0	8	0	8	0	8	0
P.H.O.L. - Peterborough	7	0	0	0	0	0	7	0	7	0	0	0	0	0	7	0	7	0	7	0	7	0
St. Joseph's - Hamilton	N.A.	N.A.	N.A.	N.A.	N.A.	N.A.	N.A.	N.A.	N.A.	N.A.	N.A.	N.A.	N.A.	N.A.	N.A.	N.A.	N.A.	N.A.	N.A.	N.A.	N.A.	N.A.
<b>Province of Ontario</b>	<b>664</b>	<b>0</b>	<b>0</b>	<b>0</b>	<b>0</b>	<b>0</b>	<b>664</b>	<b>0</b>	<b>242</b>	<b>0</b>	<b>0</b>	<b>0</b>	<b>0</b>	<b>0</b>	<b>242</b>	<b>0</b>	<b>242</b>	<b>2</b>	<b>242</b>	<b>8</b>	<b>214</b>	<b>0</b>
Province of Manitoba	2319	0	0	0	0	1	2319	0	11	0	0	0	0	0	11	0	93	0	11	3	93	1
Province of Saskatchewan	984	0	0	0	0	0	984	0	43	0	0	0	0	0	43	2	43	0	43	3	43	1
Province of Alberta	1923	1	0	0	1	0	517	0	517	0	0	0	0	0	517	3	517	0	517	52	517	1
<b>Prairies</b>	<b>5226</b>	<b>1</b>	<b>0</b>	<b>0</b>	<b>1</b>	<b>1</b>	<b>3820</b>	<b>0</b>	<b>571</b>	<b>0</b>	<b>0</b>	<b>0</b>	<b>0</b>	<b>0</b>	<b>571</b>	<b>5</b>	<b>653</b>	<b>0</b>	<b>571</b>	<b>58</b>	<b>653</b>	<b>3</b>
<b>British Columbia</b>	<b>1637</b>	<b>0</b>	<b>0</b>	<b>0</b>	<b>0</b>	<b>0</b>	<b>1625</b>	<b>0</b>	<b>367</b>	<b>0</b>	<b>0</b>	<b>0</b>	<b>0</b>	<b>0</b>	<b>367</b>	<b>1</b>	<b>367</b>	<b>1</b>	<b>363</b>	<b>16</b>	<b>358</b>	<b>0</b>
Yukon	72	0	0	0	0	0	72	0	N.A.	N.A.	N.A.	N.A.	N.A.	N.A.	N.A.	N.A.	N.A.	N.A.	N.A.	N.A.	N.A.	N.A.
Northwest Territories	9	0	0	0	0	0	6	0	6	0	0	0	0	0	6	0	6	0	6	2	6	0
Nunavut	2	0	0	0	0	0	1	0	1	0	0	0	0	0	1	0	1	0	1	1	1	0
<b>Territories</b>	<b>83</b>	<b>0</b>	<b>0</b>	<b>0</b>	<b>0</b>	<b>0</b>	<b>79</b>	<b>0</b>	<b>7</b>	<b>0</b>	<b>0</b>	<b>0</b>	<b>0</b>	<b>0</b>	<b>7</b>	<b>0</b>	<b>7</b>	<b>0</b>	<b>7</b>	<b>3</b>	<b>7</b>	<b>0</b>
<b>CANADA</b>	<b>9464</b>	<b>1</b>	<b>0</b>	<b>0</b>	<b>1</b>	<b>1</b>	<b>7649</b>	<b>14</b>	<b>1915</b>	<b>0</b>	<b>0</b>	<b>1</b>	<b>0</b>	<b>0</b>	<b>1916</b>	<b>13</b>	<b>1997</b>	<b>3</b>	<b>1751</b>	<b>141</b>	<b>1624</b>	<b>13</b>

The data in the RVDSS report represent surveillance data available at the time of writing. Missing data are denoted by N.A.

Specimens from Yukon (YT), Northwest Territories (NT) and Nunavut (NU) are sent to reference laboratories in other provinces and reported results reflect specimens identified as originating from YT, NT or NU.

Results from British Columbia comprise of specimens from the following sites: BC Children's and Women's Hospital, Fraser Health Medical Microbiology Laboratory, Island Health, Providence Health Care, Powell River Hospital, St. Paul's Hospital, Vancouver General Hospital, Victoria General Hospital, BCCDC Public Health Laboratory, Interior Health Authority sites and Northern Health Authority sites.

Delays in the reporting of data may cause data to change retrospectively.

Influenza co-detections may cause the sum of A(H1N1)pdm09, A(H3), and A(UnS) positive results to exceed the sum of Total Flu A Positive results.

**Table 2: Respiratory Virus Detections/Isolations for the period August 23, 2020 - May 15, 2021 (Reporting Weeks 202035-202119)**

Reporting Laboratory	Flu Tested	A(H1N1)pdm09 Positive	A(H3) Positive	A(UnS) Positive	Total Flu A Positive	Total Flu B Positive	RSV Tested	RSV Positive	PIV Tested	PIV 1 Positive	PIV 2 Positive	PIV 3 Positive	PIV 4 Positive	Other PIV Positive	Adeno Tested	Adeno Positive	hMPV Tested	hMPV Positive	Entero/Rhino Tested	Entero/Rhino Positive	Coron Tested	Coron Positive
Newfoundland	11882	0	0	0	0	0	11882	10	11882	1	0	2	0	0	11896	52	11295	2	11882	2069	N.A.	N.A.
Prince Edward Island	3714	0	0	0	0	0	3714	4	3710	3	0	0	1	0	3710	36	3710	0	3710	431	3710	1
Nova Scotia	7995	0	0	0	0	0	7998	0	884	0	10	0	1	0	884	10	884	1	884	80	911	0
New Brunswick	53718	0	0	0	1	1	19824	0	1345	0	0	0	0	0	1336	9	1336	0	1336	55	1291	0
<b>Atlantic</b>	<b>77309</b>	<b>0</b>	<b>0</b>	<b>0</b>	<b>0</b>	<b>1</b>	<b>43418</b>	<b>14</b>	<b>17821</b>	<b>4</b>	<b>10</b>	<b>2</b>	<b>2</b>	<b>0</b>	<b>17826</b>	<b>107</b>	<b>17225</b>	<b>3</b>	<b>17812</b>	<b>2635</b>	<b>5912</b>	<b>1</b>
Région Nord-Est	5966	0	0	0	0	0	1073	1	5	0	0	0	0	0	5	1	5	0	N.A.	N.A.	5	0
Québec-Chaudière-Appalaches	744	0	0	1	1	0	858	0	650	0	0	0	0	0	652	36	647	0	N.A.	N.A.	630	27
Centre-du-Québec	887	0	0	0	0	0	895	2	344	0	0	1	0	0	342	19	344	0	N.A.	N.A.	341	12
Montréal-Laval	8571	0	0	0	0	0	7616	135	4086	2	0	5	0	0	4140	144	4070	2	N.A.	N.A.	4070	88
Ouest du Québec	2171	0	0	0	0	0	2114	0	0	0	0	0	0	0	0	0	0	0	N.A.	N.A.	0	0
Montérégie	1063	0	0	0	0	0	1063	1	0	0	0	0	0	0	0	0	0	0	N.A.	N.A.	0	0
<b>Province of Québec</b>	<b>19402</b>	<b>0</b>	<b>0</b>	<b>1</b>	<b>1</b>	<b>0</b>	<b>13619</b>	<b>139</b>	<b>5085</b>	<b>2</b>	<b>0</b>	<b>6</b>	<b>0</b>	<b>0</b>	<b>5139</b>	<b>200</b>	<b>5066</b>	<b>2</b>	<b>N.A.</b>	<b>N.A.</b>	<b>5046</b>	<b>127</b>
P.H.O.L. - Ottawa	559	0	0	0	0	0	559	1	462	0	0	0	0	0	462	0	461	0	462	24	461	1
CHEO - Ottawa	4878	0	0	1	1	1	4475	5	800	0	0	0	0	0	800	12	800	1	800	88	772	2
P.H.O.L. - Kingston	845	0	0	1	1	0	845	0	555	0	0	0	0	0	555	4	549	0	555	108	549	0
UHN / Mount Sinai Hospital	13210	2	0	2	4	1	13141	6	10299	3	2	3	8	0	8673	10	10259	10	10056	100	8095	6
P.H.O.L. - Toronto	6237	0	0	0	0	0	6234	2	5370	0	0	0	0	3	5371	14	5369	1	5370	154	5369	5
Sick Kids Hospital - Toronto	1166	0	0	0	0	0	0	0	1166	0	0	0	0	0	1166	17	1166	0	1166	114	1166	1
Sunnybrook & Women's College HSC	0	0	0	0	0	0	0	0	0	0	0	0	0	0	0	0	0	0	0	0	0	0
P.H.O.L. - Sault Ste. Marie	168	0	0	2	2	0	166	0	98	0	0	0	0	0	98	0	98	0	98	6	98	0
P.H.O.L. - Timmins	619	0	0	0	0	0	619	0	166	0	0	0	0	0	166	0	165	0	166	31	165	0
St. Joseph's - London	218	0	0	0	0	0	218	0	55	0	0	0	0	0	55	0	55	0	91	8	36	0
P.H.O.L. - London	1888	1	0	5	6	2	1878	0	1282	0	0	0	0	2	1282	2	1276	0	1282	127	1276	3
P.H.O.L. - Orillia	391	0	0	1	1	0	389	0	195	0	0	0	0	0	195	1	195	0	195	12	195	0
P.H.O.L. - Thunder Bay	406	0	0	0	0	0	406	0	389	0	0	0	0	0	390	3	389	0	389	138	389	0
P.H.O.L. - Sudbury	477	0	0	0	0	0	475	0	328	0	0	0	0	1	328	2	328	0	328	30	328	0
P.H.O.L. - Hamilton	1490	0	0	0	0	0	1435	1	1195	0	0	0	0	0	1195	2	1195	0	1195	98	1195	0
P.H.O.L. - Peterborough	502	0	0	1	1	0	456	0	351	0	0	0	0	0	351	0	350	0	351	24	350	0
St. Joseph's - Hamilton	8756	0	0	0	0	0	8756	2	8756	0	0	1	0	0	8756	19	8756	0	8756	436	0	0
<b>Province of Ontario</b>	<b>41810</b>	<b>3</b>	<b>0</b>	<b>13</b>	<b>16</b>	<b>4</b>	<b>40052</b>	<b>17</b>	<b>31467</b>	<b>3</b>	<b>2</b>	<b>4</b>	<b>8</b>	<b>6</b>	<b>29843</b>	<b>86</b>	<b>31411</b>	<b>12</b>	<b>31260</b>	<b>1498</b>	<b>20444</b>	<b>18</b>
Manitoba	52216	0	0	2	2	2	52206	68	2748	0	1	1	0	0	2748	19	3338	1	2748	164	3338	5
Province of Saskatchewan	171112	0	0	1	1	0	26259	4	1808	0	0	1	1	0	1808	14	1808	4	1808	184	1808	10
Province of Alberta	124756	5	0	6	11	0	76954	0	76954	2	19	3	8	0	76954	151	76954	11	76954	6501	76954	29
<b>Prairies</b>	<b>348084</b>	<b>5</b>	<b>0</b>	<b>9</b>	<b>14</b>	<b>2</b>	<b>155419</b>	<b>72</b>	<b>81510</b>	<b>2</b>	<b>20</b>	<b>5</b>	<b>9</b>	<b>0</b>	<b>81510</b>	<b>184</b>	<b>82100</b>	<b>16</b>	<b>81510</b>	<b>6849</b>	<b>82100</b>	<b>44</b>
<b>British Columbia</b>	<b>84654</b>	<b>3</b>	<b>8</b>	<b>1</b>	<b>10</b>	<b>8</b>	<b>84156</b>	<b>6</b>	<b>17458</b>	<b>1</b>	<b>4</b>	<b>1</b>	<b>12</b>	<b>5</b>	<b>18004</b>	<b>96</b>	<b>17854</b>	<b>61</b>	<b>17647</b>	<b>1444</b>	<b>13528</b>	<b>19</b>
Yukon	5000	0	0	8	8	7	4937	4	N.A.	N.A.	N.A.	N.A.	N.A.	N.A.	N.A.	N.A.	N.A.	N.A.	N.A.	N.A.	N.A.	N.A.
Northwest Territories	1166	0	0	0	0	0	1120	0	1120	0	0	0	1	0	1120	12	1120	1	1120	322	1120	1
Nunavut	1122	0	0	0	0	0	1100	0	1100	3	1	0	0	0	1100	25	1100	5	1100	282	190	0
<b>Territories</b>	<b>7288</b>	<b>0</b>	<b>0</b>	<b>8</b>	<b>8</b>	<b>7</b>	<b>7157</b>	<b>4</b>	<b>2220</b>	<b>3</b>	<b>1</b>	<b>0</b>	<b>1</b>	<b>0</b>	<b>2220</b>	<b>37</b>	<b>2220</b>	<b>6</b>	<b>2220</b>	<b>604</b>	<b>1310</b>	<b>1</b>
<b>CANADA</b>	<b>578547</b>	<b>11</b>	<b>8</b>	<b>32</b>	<b>49</b>	<b>22</b>	<b>343821</b>	<b>252</b>	<b>155561</b>	<b>15</b>	<b>37</b>	<b>18</b>	<b>32</b>	<b>11</b>	<b>154542</b>	<b>710</b>	<b>155876</b>	<b>100</b>	<b>150449</b>	<b>13030</b>	<b>128340</b>	<b>210</b>

The data in the RVDSS report represent surveillance data available at the time of writing. Missing data are denoted by N.A.

Specimens from YT, NT and NU are sent to reference laboratories in other provinces and reported results reflect specimens identified as originating from YT, NT or NU.

Results from British Columbia comprise of specimens from the following sites: BC Children's and Women's Hospital, Children's and Women's Hospital Laboratory, Fraser Health Medical Microbiology Laboratory, Island Health, Providence Health Care, Powell River Hospital, St. Paul's Hospital, Vancouver General Hospital, Victoria General Hospital, BCCDC Public Health Laboratory, Interior Health Authority sites and Northern Health Authority sites.

Delays in the reporting of data may cause data to change retrospectively.

Due to reporting delays, the sum of weekly report totals do not add up to cumulative totals.

Influenza co-detections may cause the sum of A(H1N1)pdm09, A(H3), and A(UnS) positive results to exceed the sum of Total Flu A Positive results.

Figure 1: Number positive laboratory tests for other respiratory viruses by report week, Canada, 2020-21

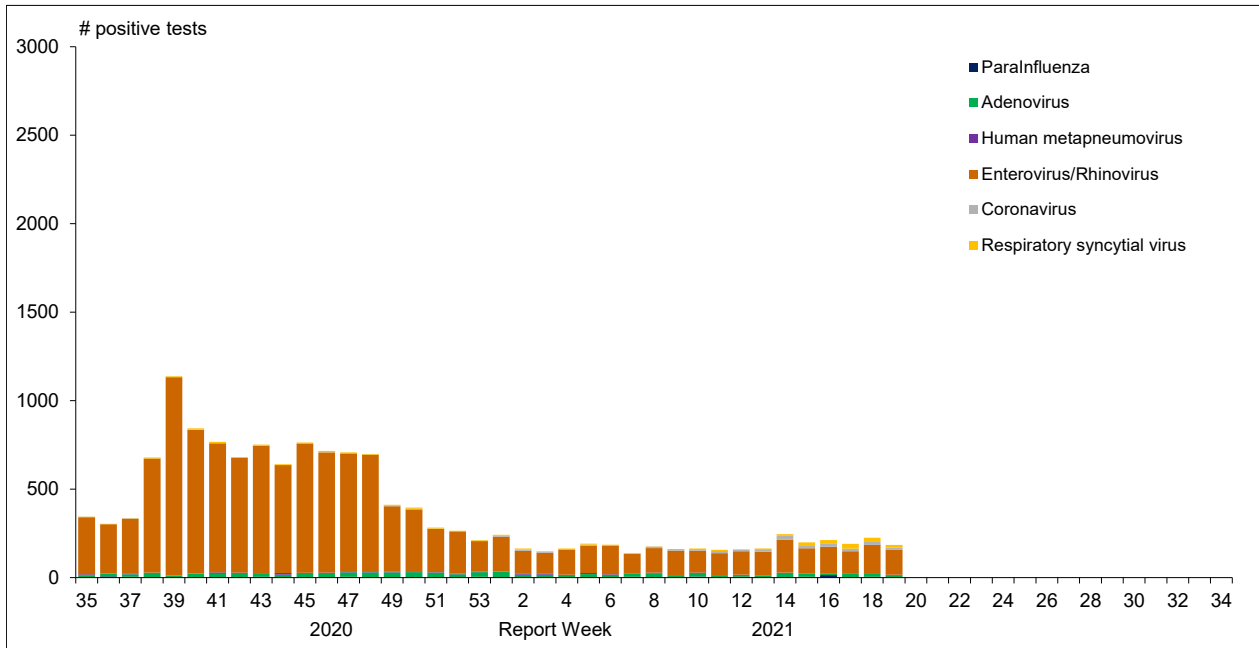


Figure 2 : Positive Influenza Tests (%) in Canada by Region by Week of Report

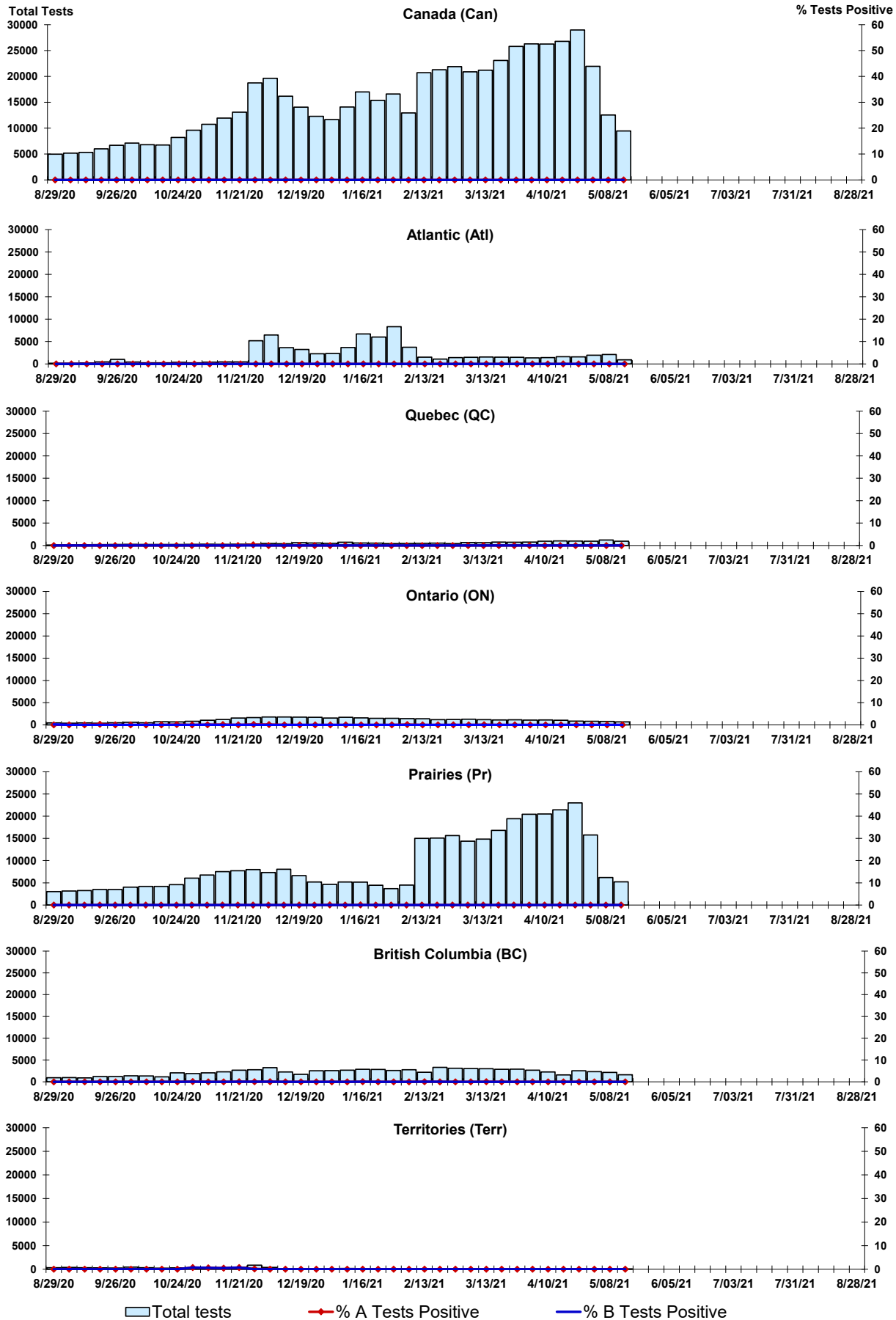


Figure 3: Positive Respiratory syncytial virus (RSV) Tests (%) in Canada by Region by Week of Report

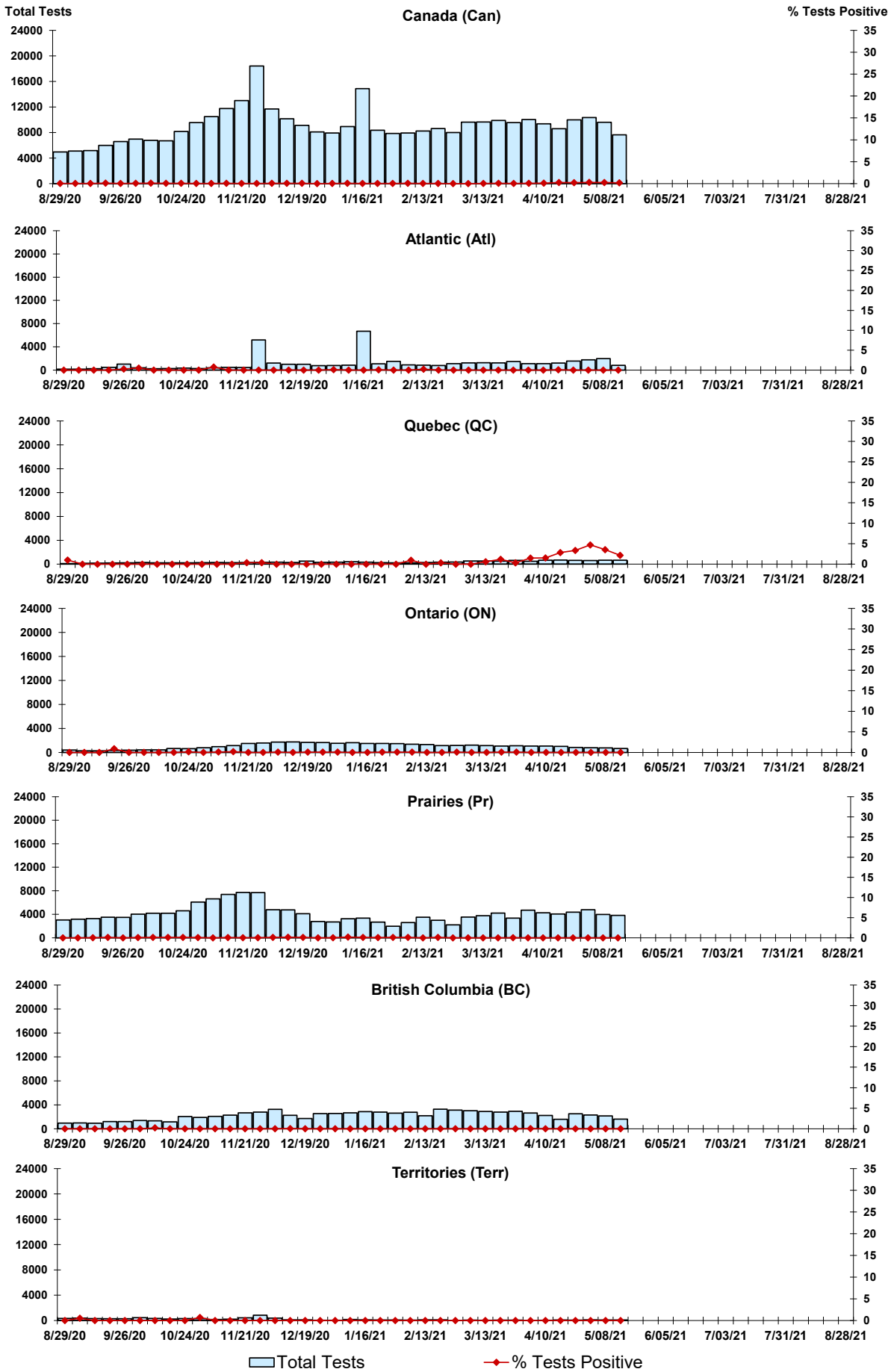
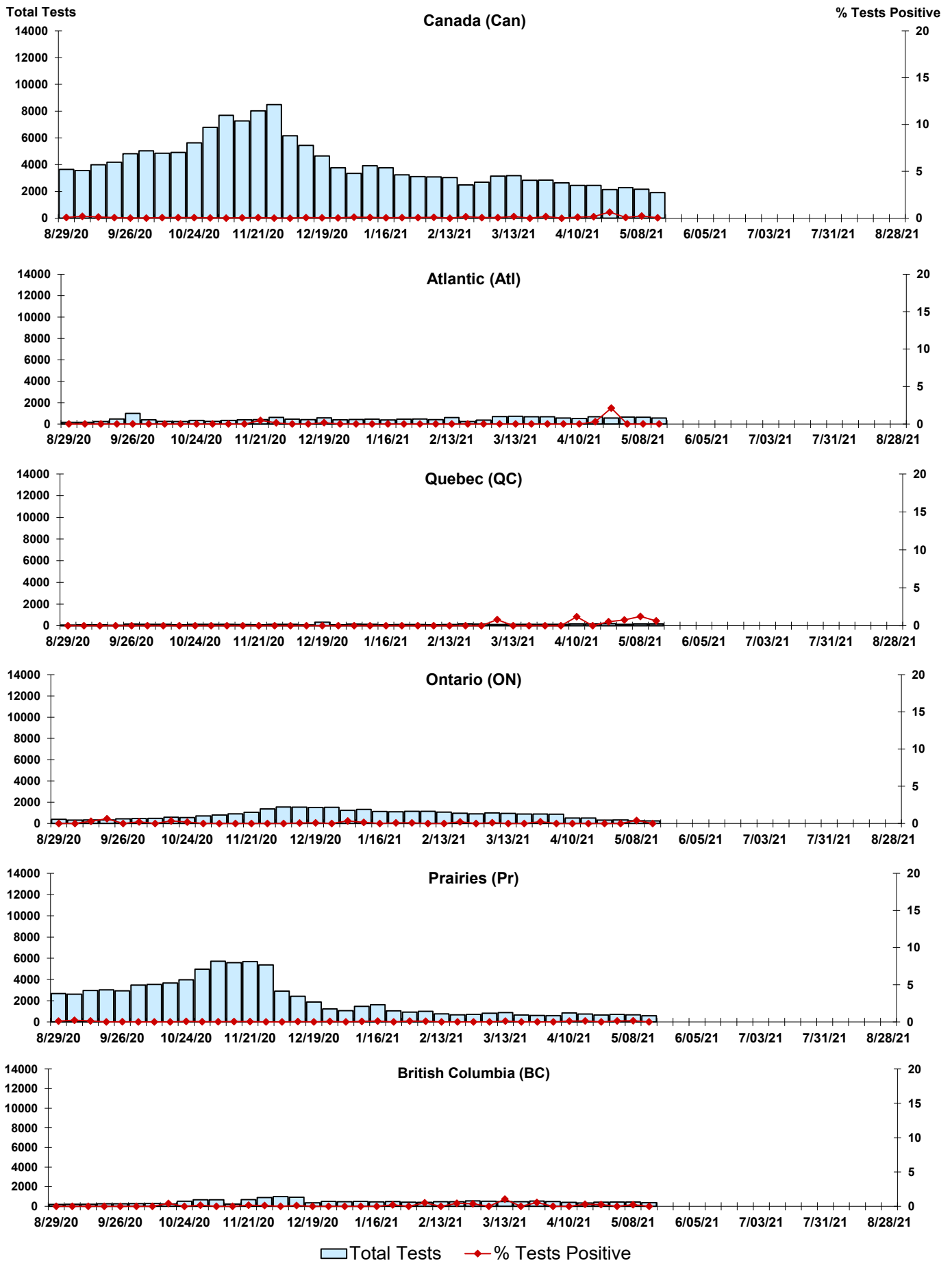


Figure 4: Positive Parainfluenza (PIV) Tests (%) in Canada by Region by Week of Report



Legend: Total Tests (light blue bar), % Tests Positive (red diamond)

Figure 5: Positive Adenovirus (adeno) Tests (%) in Canada by Region by Week of Report

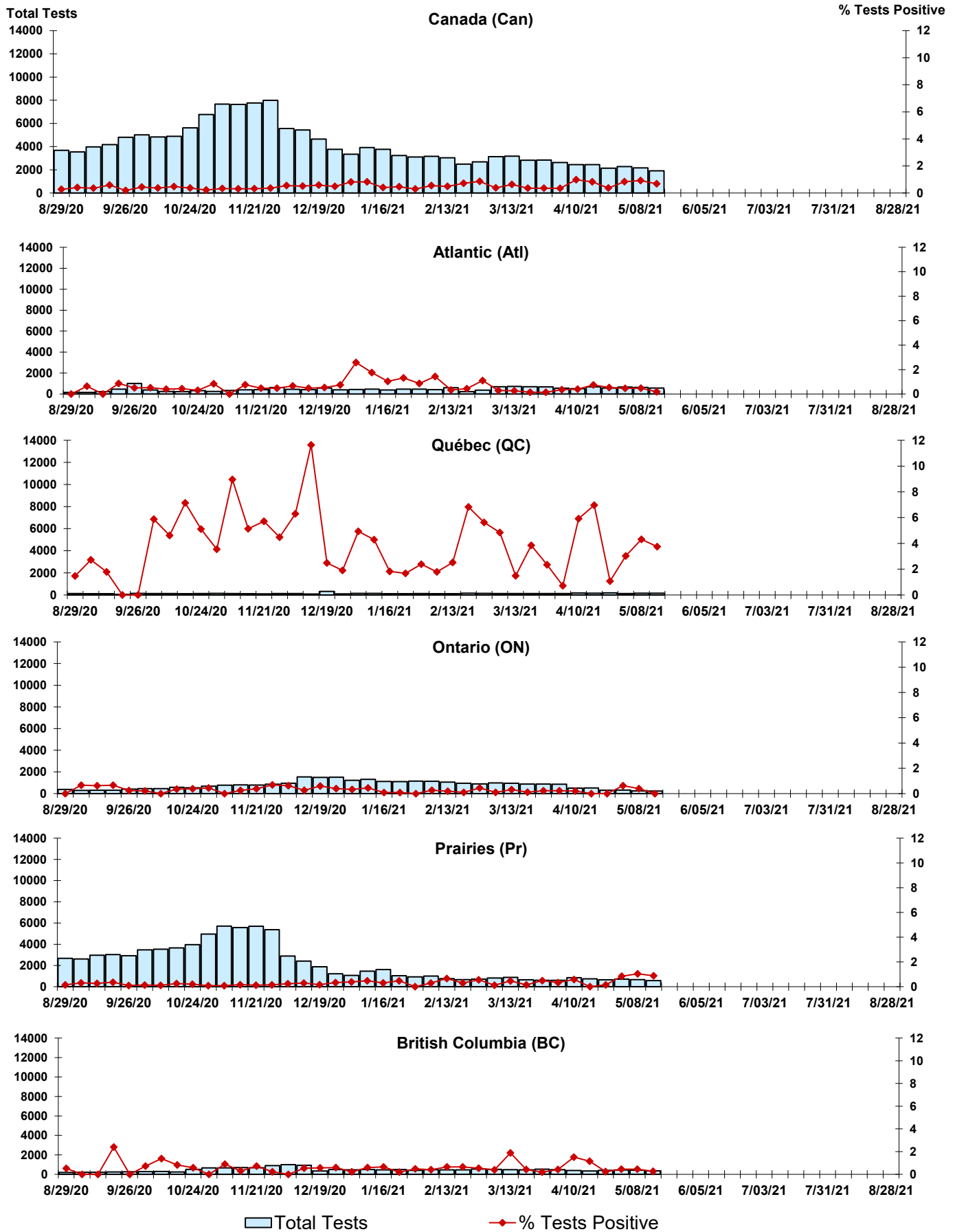
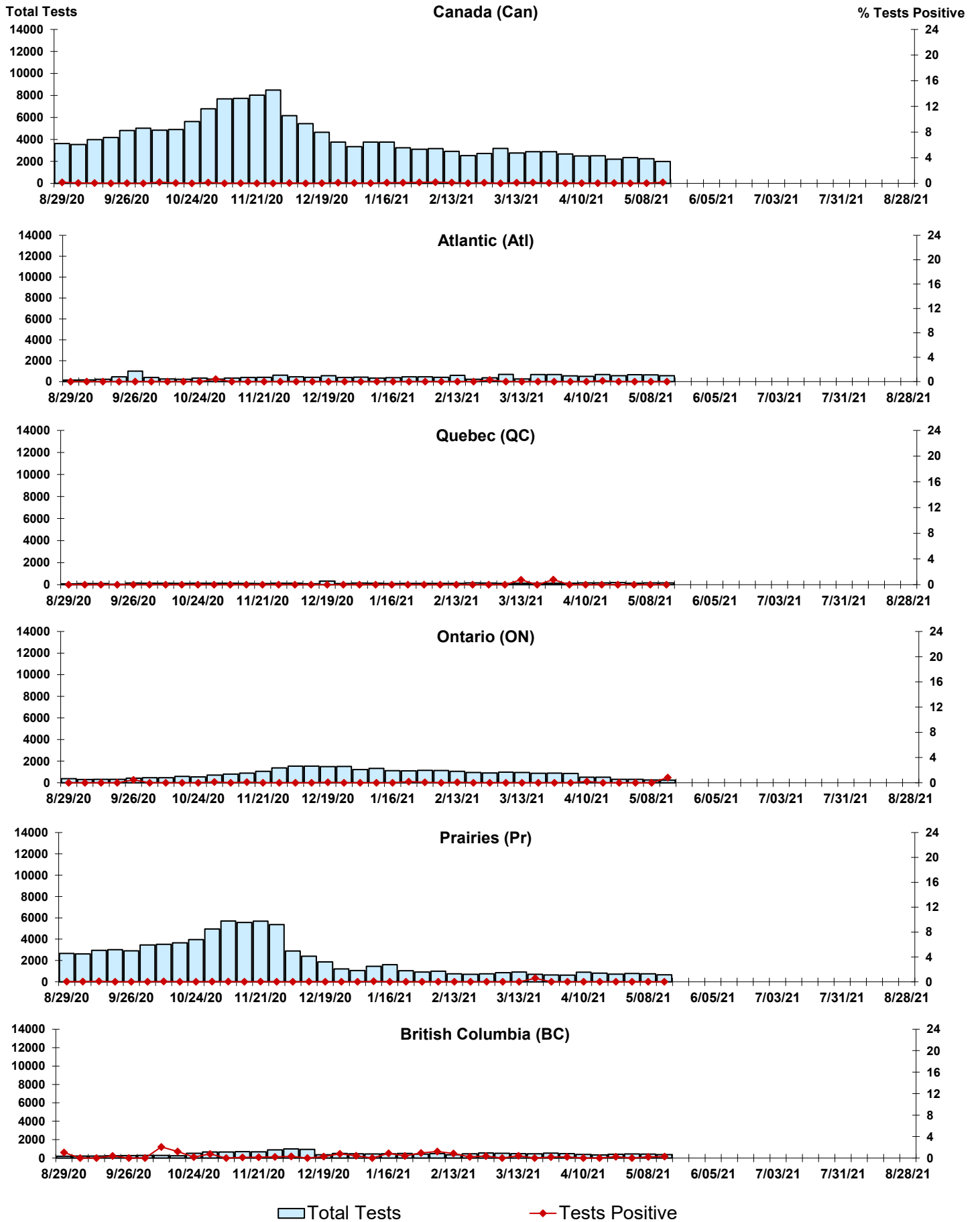


Figure 6: Positive human metapneumovirus (hMPV) Tests (%) in Canada by Region by Week of Report



Total Tests
  Tests Positive



Figure 7: Positive Enterovirus/Rhinovirus (entero/rhino) Tests (%) in Canada by Region by Week of Report

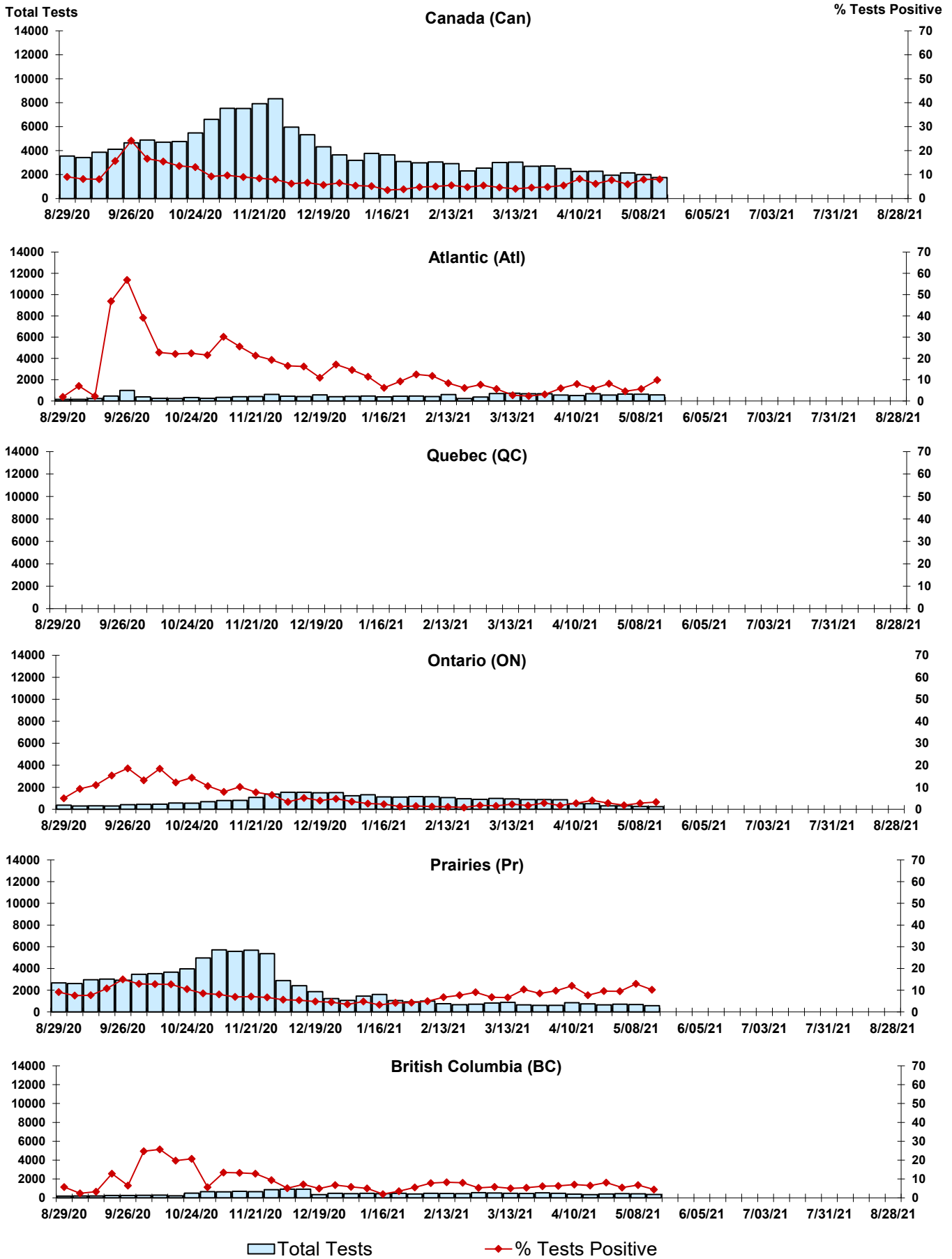
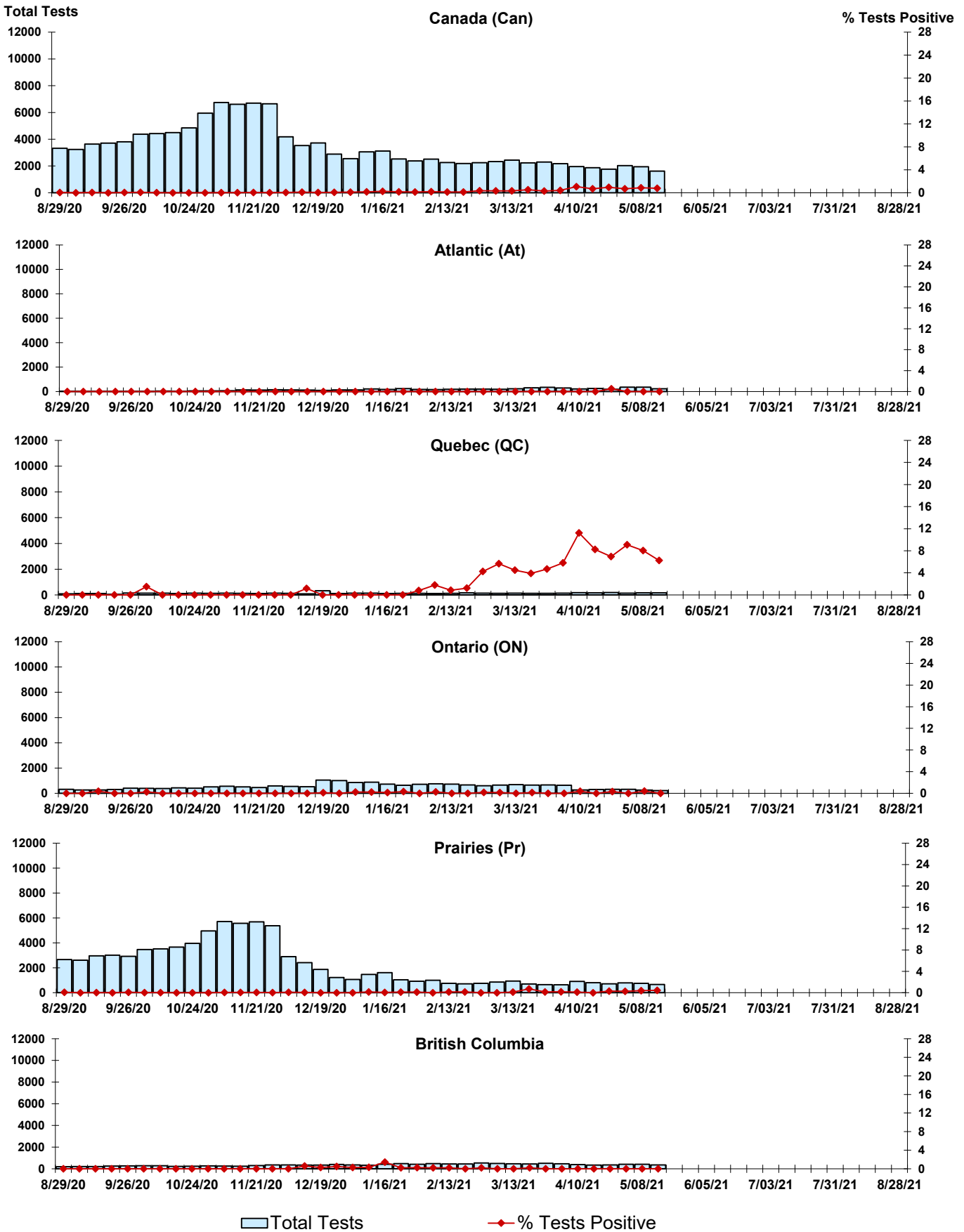


Figure 8: Positive Coronavirus (coron) Tests (%) in Canada by Region by Week of Report



## Abbreviations:

A(H1N1)pdm09: Influenza A(H1N1)pdm09

A(H3): Influenza A(H3N2)

A (UnS): Influenza A (Unsubtyped)

Adeno: Adenovirus

CHEO: Children's Hospital of Eastern Ontario

Coron: Coronavirus

Enterovirus: Enterovirus

hMPV: human metapneumovirus

HSC: Health Sciences Centre

N.A.: Not Applicable

P.H.L.: Public Health Laboratory

P.H.O.L.: Public Health Ontario Laboratory

PIV: Parainfluenza

Rhino: Rhinovirus

RSV: Respiratory syncytial virus

UHN: University Health Network

## Notes:

The data in the RVDSS report represent surveillance data available at the time of writing. Missing data are denoted by N.A.

Specimens from Yukon (YT), Northwest Territories (NT) and Nunavut (NU) are sent to reference laboratories in other provinces. Results reported for the Territories reflect the number of specimens that are identified as originating from YT, NT or NU.

Delays in the reporting of data may cause data to change retrospectively.

Due to reporting delays, the sum of weekly report totals do not add up to cumulative totals.