

Respiratory Virus Report, Week 2 - ending January 16, 2021

The Respiratory Virus Detection Surveillance System collects data from select laboratories across Canada on the number of tests performed and the number of tests positive for influenza and other respiratory viruses. Data are reported on a weekly basis year-round to the Centre for Immunization and Respiratory Infectious Diseases (CIRID), Public Health Agency of Canada. These data are also summarized in the weekly FluWatch report.

In this Respiratory Virus Report, the number of detections of coronavirus reflects only seasonal human coronaviruses, not the novel pandemic coronavirus (SARS-CoV2) that causes COVID-19. For information on COVID-19, see the [Coronavirus disease \(COVID-19\): Outbreak](#)

Table 1: Respiratory Virus Detections/Isolations for the week ending January 16, 2021 (Reporting Week 202102)

Reporting Laboratory	Flu Tested	A(H1N1)pdm09 Positive	A(H3) Positive	A(UnS) Positive	Total Flu A Positive	Total Flu B Positive	RSV Tested	RSV Positive	PIV Tested	PIV 1 Positive	PIV 2 Positive	PIV 3 Positive	PIV 4 Positive	Other PIV Positive	Adeno Tested	Adeno Positive	hMPV Tested	hMPV Positive	Entero/Rhino Tested	Entero/Rhino Positive	Coron Tested	Coron Positive
Newfoundland	208	0	0	0	0	0	208	1	208	0	0	0	0	0	208	0	208	0	208	16	N.A.	N.A.
Prince Edward Island	146	0	0	0	0	0	146	0	146	0	0	0	0	0	146	3	146	0	146	7	146	0
Nova Scotia	39	0	0	0	0	0	39	0	9	0	0	0	0	0	9	0	9	0	9	0	9	0
New Brunswick	6301	0	0	0	0	0	6301	0	25	0	0	0	0	0	25	1	25	0	25	1	25	0
Atlantic	6694	0	0	0	0	0	6694	1	388	0	0	0	0	0	388	4	388	0	388	24	180	0
Région Nord-Est	168	0	0	0	0	0	30	0	0	0	0	0	0	0	0	0	0	0	N.A.	N.A.	0	0
Québec-Chaudière-Appalaches	20	0	0	0	0	0	25	0	15	0	0	0	0	0	15	1	15	0	N.A.	N.A.	15	0
Centre-du-Québec	25	0	0	0	0	0	25	0	7	0	0	0	0	0	7	0	7	0	N.A.	N.A.	7	0
Montréal-Laval	307	0	0	0	0	0	213	0	87	0	0	0	0	0	87	1	85	0	N.A.	N.A.	85	0
Ouest du Québec	30	0	0	0	0	0	28	0	0	0	0	0	0	0	0	0	0	0	N.A.	N.A.	0	0
Montérégie	0	0	0	0	0	0	0	0	0	0	0	0	0	0	0	0	0	0	N.A.	N.A.	0	0
Province of Québec	550	0	0	0	0	0	321	0	109	0	0	0	0	0	109	2	107	0	N.A.	N.A.	107	0
P.H.O.L. - Ottawa	19	0	0	0	0	0	19	0	14	0	0	0	0	0	14	0	14	0	14	2	14	0
CHEO - Ottawa	166	0	0	0	0	0	166	0	27	0	0	0	0	0	27	1	27	0	27	2	27	0
P.H.O.L. - Kingston	30	0	0	0	0	0	30	0	11	0	0	0	0	0	11	0	11	0	11	0	11	0
UHN / Mount Sinai Hospital	520	0	0	0	0	0	476	0	476	0	0	0	0	0	476	0	476	0	476	7	476	1
P.H.O.L. - Toronto	172	0	0	0	0	0	172	0	129	0	0	0	0	0	129	0	129	0	129	1	129	0
Sick Kids Hospital - Toronto	0	0	0	0	0	0	0	0	0	0	0	0	0	0	0	0	0	0	0	0	0	0
Sunnybrook & Women's College HSC	0	0	0	0	0	0	0	0	0	0	0	0	0	0	0	0	0	0	0	0	0	0
P.H.O.L. - Sault Ste. Marie	13	0	0	0	0	0	13	0	3	0	0	0	0	0	3	0	3	0	3	1	3	0
P.H.O.L. - Timmins	49	0	0	0	0	0	49	0	2	0	0	0	0	0	2	0	2	0	2	0	2	0
St. Joseph's - London	0	0	0	0	0	0	0	0	0	0	0	0	0	0	0	0	0	0	0	0	0	0
P.H.O.L. - London	80	0	0	0	0	0	80	0	9	0	0	0	0	0	9	0	9	0	9	0	9	0
P.H.O.L. - Orillia	15	0	0	0	0	0	15	0	0	0	0	0	0	0	0	0	0	0	0	0	0	0
P.H.O.L. - Thunder Bay	6	0	0	0	0	0	6	0	3	0	0	0	0	0	3	0	3	0	3	0	3	0
P.H.O.L. - Sudbury	23	0	0	0	0	0	23	0	8	0	0	0	0	0	8	0	8	0	8	1	8	0
P.H.O.L. - Hamilton	58	0	0	0	0	0	54	0	13	0	0	0	0	0	13	0	13	0	13	0	13	0
P.H.O.L. - Peterborough	11	0	0	0	0	0	11	0	1	0	0	0	0	0	1	0	1	0	1	0	1	0
St. Joseph's - Hamilton	395	0	0	0	0	0	395	0	395	0	0	0	0	0	395	0	395	0	395	10	0	0
Province of Ontario	1557	0	0	0	0	0	1509	0	1091	0	0	0	0	0	1091	1	1091	0	1091	24	696	1
Province of Manitoba	1729	0	0	0	0	0	1729	4	95	0	0	0	0	0	95	0	93	0	95	1	93	0
Province of Saskatchewan	119	0	0	0	0	0	119	0	59	0	0	0	0	1	59	0	59	0	59	3	59	0
Province of Alberta	3086	1	0	1	2	0	1315	0	1315	0	0	0	0	0	1315	5	1315	0	1315	45	1315	1
Prairies	4934	1	0	1	2	0	3163	4	1469	0	0	0	1	0	1469	5	1467	0	1469	49	1467	1
British Columbia	2616	0	0	0	0	1	2597	0	422	0	0	0	0	0	422	3	422	4	417	8	383	6
Yukon	0	0	0	0	0	0	0	0	N.A.	N.A.	N.A.	N.A.	N.A.	N.A.	N.A.	N.A.	N.A.	N.A.	N.A.	N.A.	N.A.	N.A.
Northwest Territories	26	0	0	0	0	0	24	0	24	0	0	0	0	0	24	0	24	0	24	6	24	0
Nunavut	0	0	0	0	0	0	0	0	0	0	0	0	0	0	0	0	0	0	0	0	0	0
Territories	26	0	0	0	0	0	24	0	24	0	0	0	0	0	24	0	24	0	24	6	24	0
CANADA	16377	1	0	1	2	1	14308	5	3503	0	0	0	1	0	3503	15	3499	4	3389	111	2857	8

The data in the RVDSS report represent surveillance data available at the time of writing. Missing data are denoted by N.A.

Specimens from Yukon (YT), Northwest Territories (NT) and Nunavut (NU) are sent to reference laboratories in other provinces and reported results reflect specimens identified as originating from YT, NT or NU.

Results from British Columbia comprise of specimens from the following sites: BC Children's and Women's Hospital, Fraser Health Medical Microbiology Laboratory, Island Health, Providence Health Care, Powell River Hospital, St. Paul's Hospital, Vancouver General Hospital, Victoria General Hospital, BCCDC Public Health Laboratory, Interior Health Authority sites and Northern Health Authority sites.

Delays in the reporting of data may cause data to change retrospectively.

Table 2: Respiratory Virus Detections/Isolations for the period August 23, 2020 - January 16, 2021 (Reporting Weeks 202035-202102)

Reporting Laboratory	Flu Tested	A(H1N1)pdm09 Positive	A(H3) Positive	A(UnS) Positive	Total Flu A Positive	Total Flu B Positive	RSV Tested	RSV Positive	PIV Tested	PIV 1 Positive	PIV 2 Positive	PIV 3 Positive	PIV 4 Positive	Other PIV Positive	Adeno Tested	Adeno Positive	hMPV Tested	hMPV Positive	Entero/Rhino Tested	Entero/Rhino Positive	Coron Tested	Coron Positive
Newfoundland	6491	0	0	0	0	0	6491	8	6491	1	0	1	0	0	6495	29	6370	1	6491	1758	N.A.	N.A.
Prince Edward Island	1129	0	0	0	0	0	1129	2	1125	2	0	0	0	0	1125	19	1125	0	1125	165	1125	0
Nova Scotia	875	0	0	0	0	0	877	0	295	0	0	0	0	0	295	5	295	0	295	50	295	0
New Brunswick	29874	0	0	0	0	1	13903	0	416	0	0	0	0	0	407	6	407	0	407	43	362	0
Atlantic	38369	0	0	0	0	1	22400	10	8327	3	0	1	0	0	8322	59	8197	1	8318	2016	1782	0
Région Nord-Est	1645	0	0	0	0	0	658	1	0	0	0	0	0	0	0	0	0	0	N.A.	N.A.	0	0
Québec-Chaudière-Appalaches	484	0	0	1	1	0	536	0	328	0	0	0	0	0	330	17	325	0	N.A.	N.A.	308	0
Centre-du-Québec	498	0	0	0	0	0	503	1	162	0	0	0	0	0	160	12	162	0	N.A.	N.A.	159	0
Montréal-Laval	3713	0	0	0	0	0	3214	1	2194	0	0	0	0	0	2248	85	2182	0	N.A.	N.A.	2182	3
Ouest du Québec	609	0	0	0	0	0	566	0	0	0	0	0	0	0	0	0	0	0	N.A.	N.A.	0	0
Montérégie	1	0	0	0	0	0	1	0	0	0	0	0	0	0	0	0	0	0	N.A.	N.A.	0	0
Province of Québec	6950	0	0	1	1	0	5478	3	2684	0	0	0	0	0	2738	114	2669	0	N.A.	N.A.	2649	3
P.H.O.L. - Ottawa	336	0	0	0	0	0	336	1	307	0	0	0	0	0	307	0	306	0	307	20	306	0
CHEO - Ottawa	2936	0	0	1	1	1	2533	4	461	0	0	0	0	0	461	7	461	0	461	47	461	0
P.H.O.L. - Kingston	631	0	0	1	1	0	631	0	429	0	0	0	0	0	429	2	425	0	429	101	425	0
UHN / Mount Sinai Hospital	5034	1	0	0	1	1	4965	2	4696	0	2	2	7	0	3070	6	4656	5	4453	69	2492	3
P.H.O.L. - Toronto	3631	0	0	0	0	0	3628	2	3562	0	0	0	0	2	3563	11	3561	0	3562	137	3561	2
Sick Kids Hospital - Toronto	0	0	0	0	0	0	0	0	0	0	0	0	0	0	0	0	0	0	0	0	0	0
Sunnybrook & Women's College HSC	0	0	0	0	0	0	0	0	0	0	0	0	0	0	0	0	0	0	0	0	0	0
P.H.O.L. - Sault Ste. Marie	102	0	0	2	2	0	100	0	82	0	0	0	0	0	82	0	82	0	82	6	82	0
P.H.O.L. - Timmins	463	0	0	0	0	0	463	0	129	0	0	0	0	0	129	0	128	0	129	30	128	0
St. Joseph's - London	218	0	0	0	0	0	218	0	55	0	0	0	0	0	55	0	55	0	91	8	36	0
P.H.O.L. - London	1384	1	0	5	6	2	1374	0	1141	0	0	0	0	2	1141	2	1136	0	1141	124	1136	3
P.H.O.L. - Orillia	229	0	0	1	1	0	227	0	188	0	0	0	0	0	188	1	188	0	188	12	188	0
P.H.O.L. - Thunder Bay	331	0	0	0	0	0	331	0	327	0	0	0	0	0	328	2	327	0	327	128	327	0
P.H.O.L. - Sudbury	312	0	0	0	0	0	310	0	293	0	0	0	0	0	293	1	293	0	293	27	293	0
P.H.O.L. - Hamilton	1130	0	0	0	0	0	1083	1	960	0	0	0	0	0	960	2	960	0	960	93	960	0
P.H.O.L. - Peterborough	320	0	0	1	1	0	274	0	231	0	0	0	0	0	231	0	231	0	231	18	231	0
St. Joseph's - Hamilton	4833	0	0	0	0	0	4833	1	4833	0	0	0	0	0	4833	16	4833	0	4833	356	0	0
Province of Ontario	21890	2	0	11	13	4	21306	11	17694	0	2	2	7	4	16070	50	17642	5	17487	1176	10626	8
Manitoba	26170	0	0	0	0	1	26170	59	1985	0	1	1	0	0	1985	13	1882	1	1985	117	1882	1
Province of Saskatchewan	3013	0	0	0	0	0	3013	2	1212	0	0	1	1	0	1212	9	1212	0	1212	131	1212	2
Province of Alberta	82339	3	0	4	7	0	65324	0	65324	2	17	2	3	0	65324	108	65324	11	65324	5577	65324	18
Prairies	111522	3	0	4	7	1	94507	61	68521	2	18	4	4	0	68521	130	68418	12	68521	5825	68418	21
British Columbia	37660	1	2	4	7	6	37638	5	9651	0	2	0	3	0	10117	50	10071	35	9920	966	5949	13
Yukon	3404	0	0	8	8	7	3357	4	N.A.	N.A.	N.A.	N.A.	N.A.	N.A.	N.A.	N.A.	N.A.	N.A.	N.A.	N.A.	N.A.	N.A.
Northwest Territories	881	0	0	0	0	0	874	0	874	0	0	0	1	0	874	8	874	1	874	277	874	0
Nunavut	1072	0	0	0	0	0	1068	0	1068	3	1	0	0	0	1068	25	1068	5	1068	277	175	0
Territories	5357	0	0	8	8	7	5299	4	1942	3	1	0	1	0	1942	33	1942	6	1942	554	1049	0
CANADA	221748	6	2	28	36	19	186628	94	108819	8	23	7	15	4	107710	436	108939	59	106188	10537	90473	45

The data in the RVDSS report represent surveillance data available at the time of writing. Missing data are denoted by N.A.

Specimens from YT, NT and NU are sent to reference laboratories in other provinces and reported results reflect specimens identified as originating from YT, NT or NU.

Results from British Columbia comprise of specimens from the following sites: BC Children's and Women's Hospital, Children's and Women's Hospital Laboratory, Fraser Health Medical Microbiology Laboratory, Island Health, Providence Health Care, Powell River Hospital, St. Paul's Hospital, Vancouver General Hospital, Victoria General Hospital, BCCDC Public Health Laboratory, Interior Health Authority sites and Northern Health Authority sites.

Delays in the reporting of data may cause data to change retrospectively.

Due to reporting delays, the sum of weekly report totals do not add up to cumulative totals.

Figure 1: Number positive laboratory tests for other respiratory viruses by report week, Canada, 2020-21

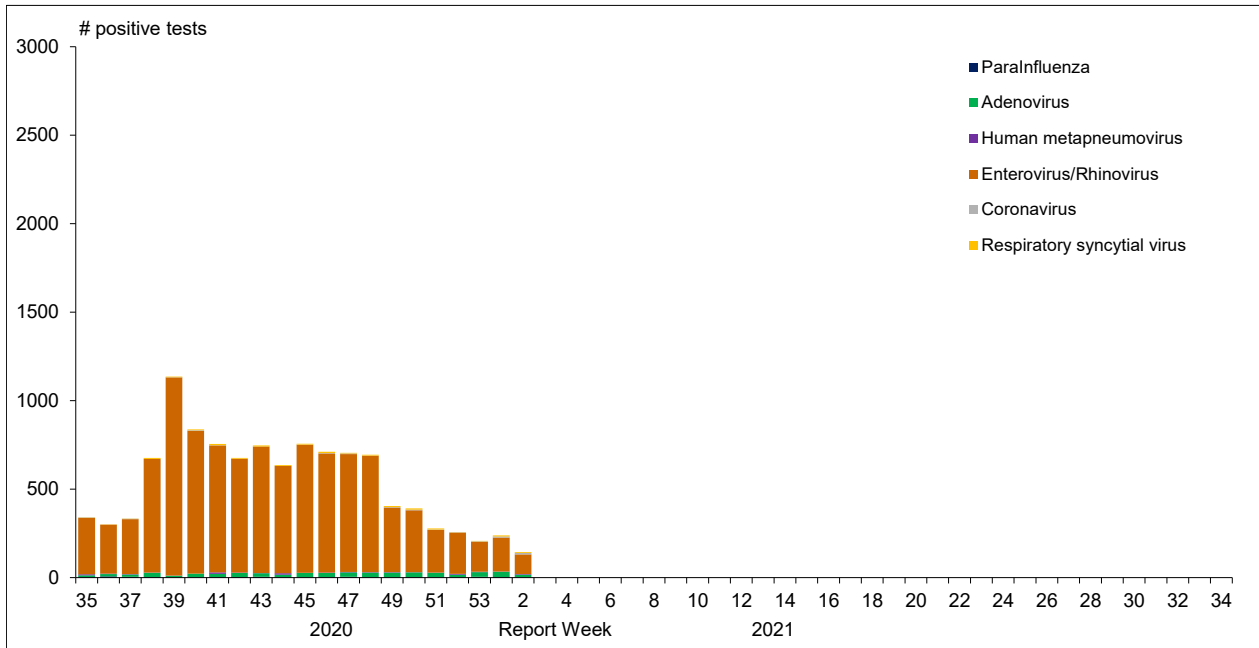


Figure 2 : Positive Influenza Tests (%) in Canada by Region by Week of Report

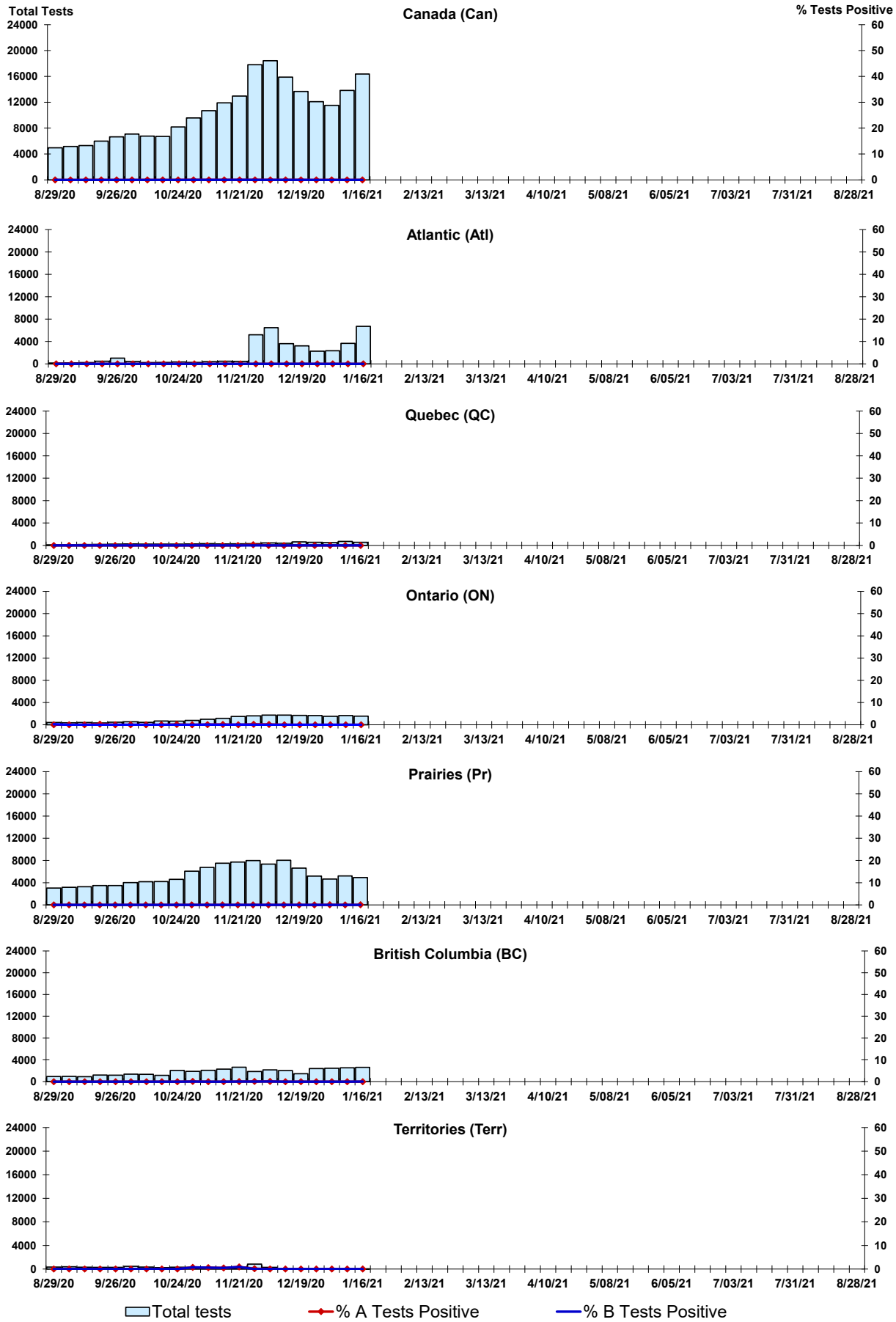


Figure 3: Positive Respiratory syncytial virus (RSV) Tests (%) in Canada by Region by Week of Report

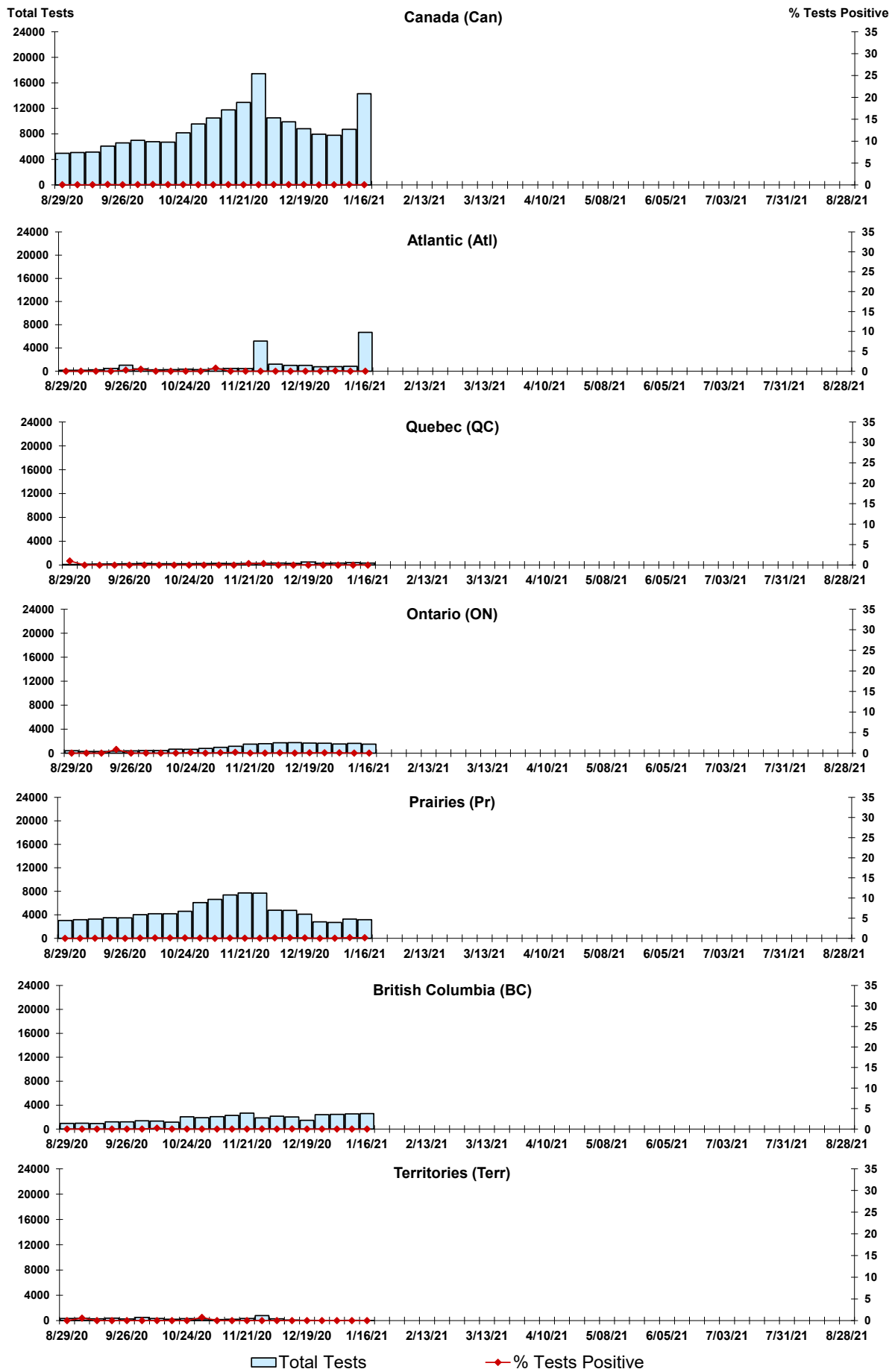
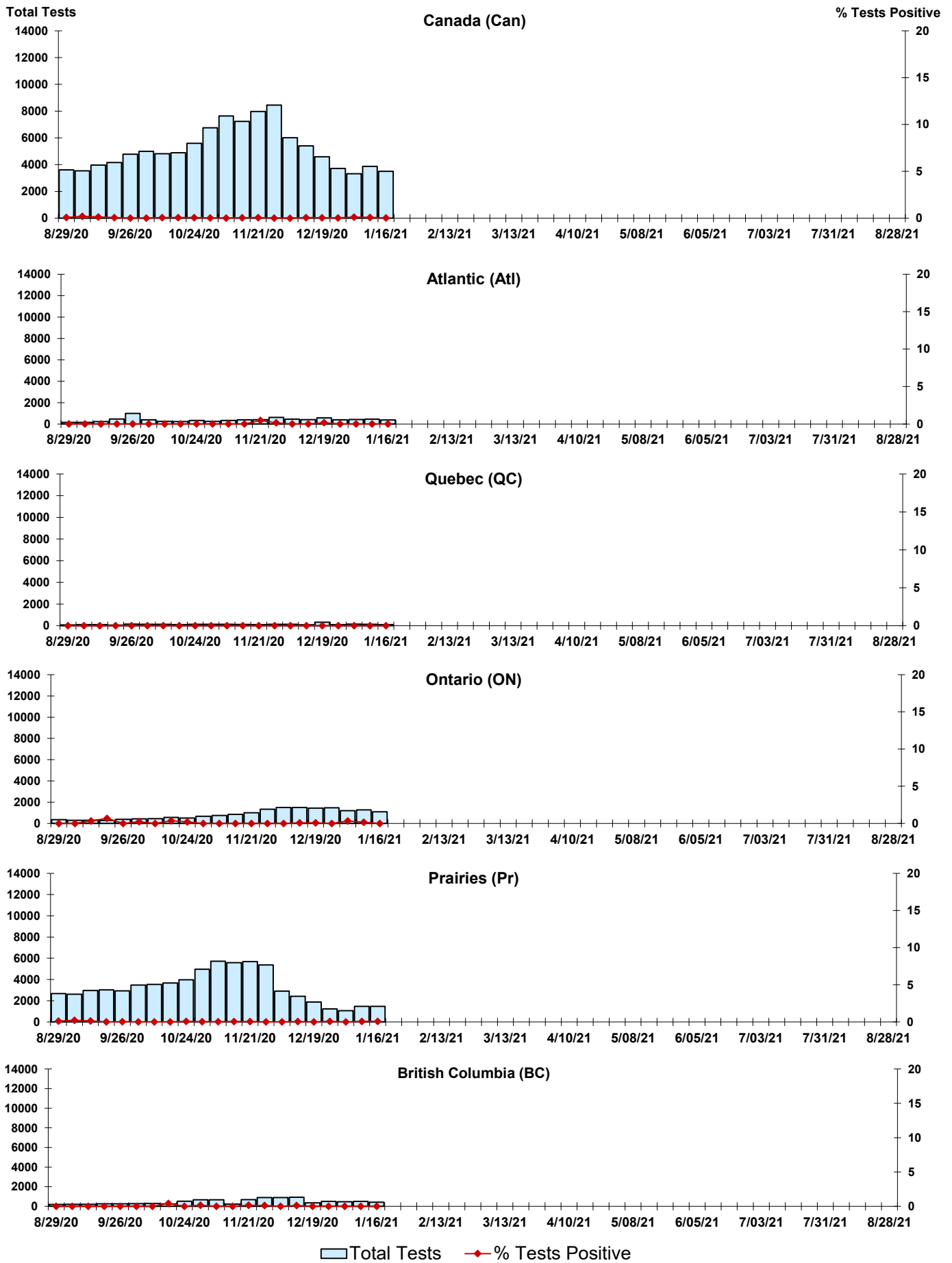


Figure 4: Positive Parainfluenza (PIV) Tests (%) in Canada by Region by Week of Report



Legend: Total Tests (light blue bar), % Tests Positive (red diamond with line)

Figure 5: Positive Adenovirus (adeno) Tests (%) in Canada by Region by Week of Report

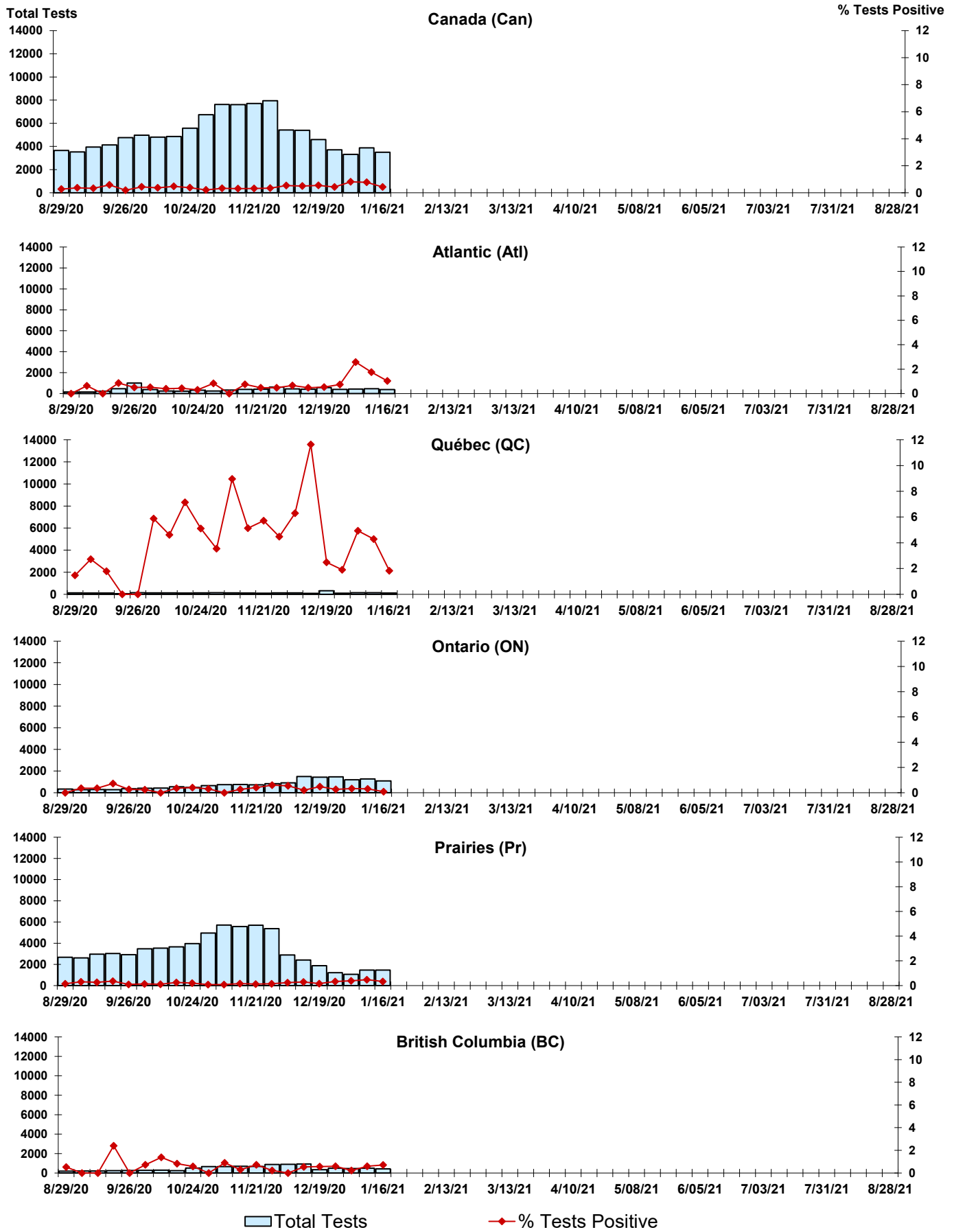


Figure 6: Positive human metapneumovirus (hMPV) Tests (%) in Canada by Region by Week of Report

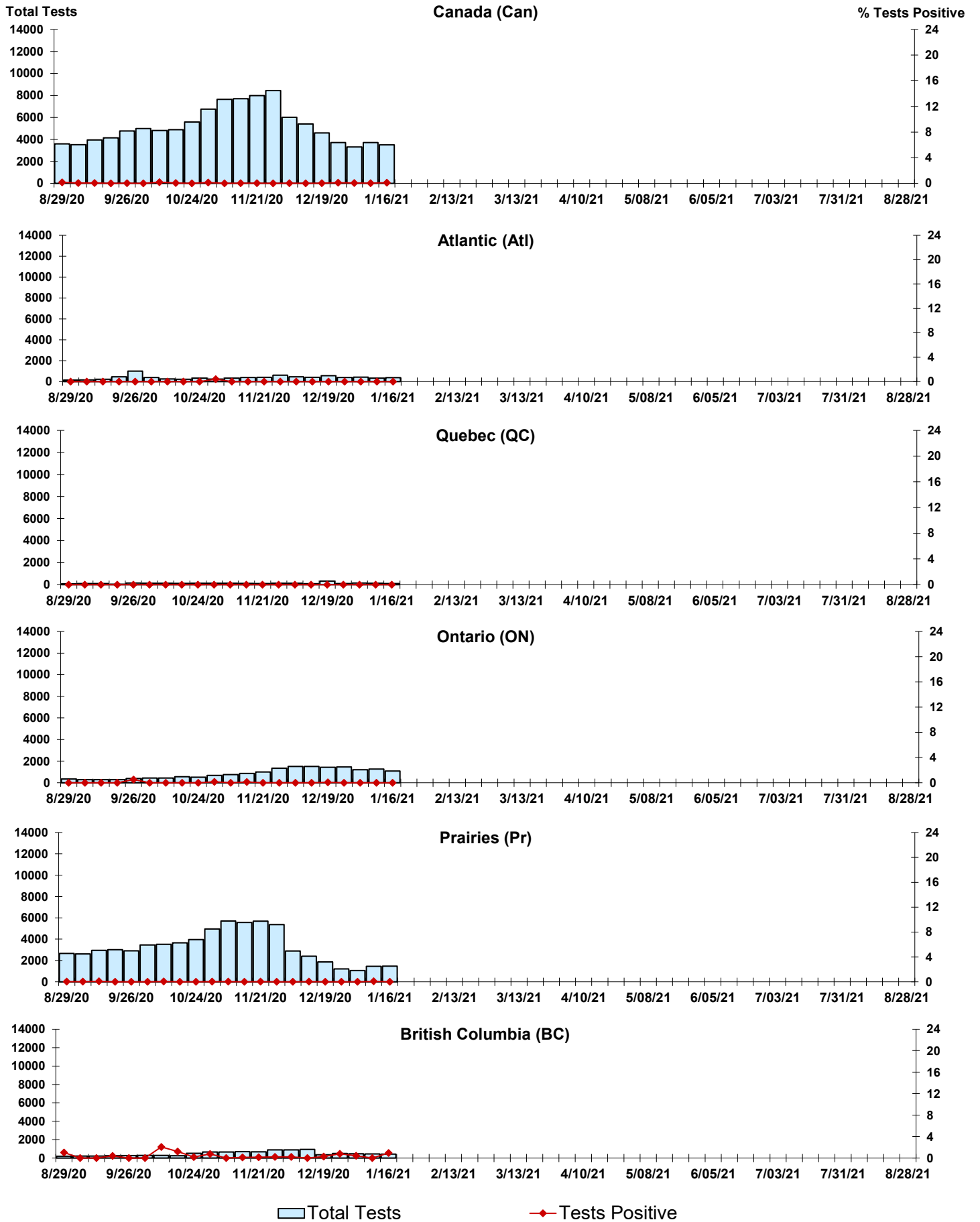


Figure 7: Positive Enterovirus/Rhinovirus (entero/rhino) Tests (%) in Canada by Region by Week of Report

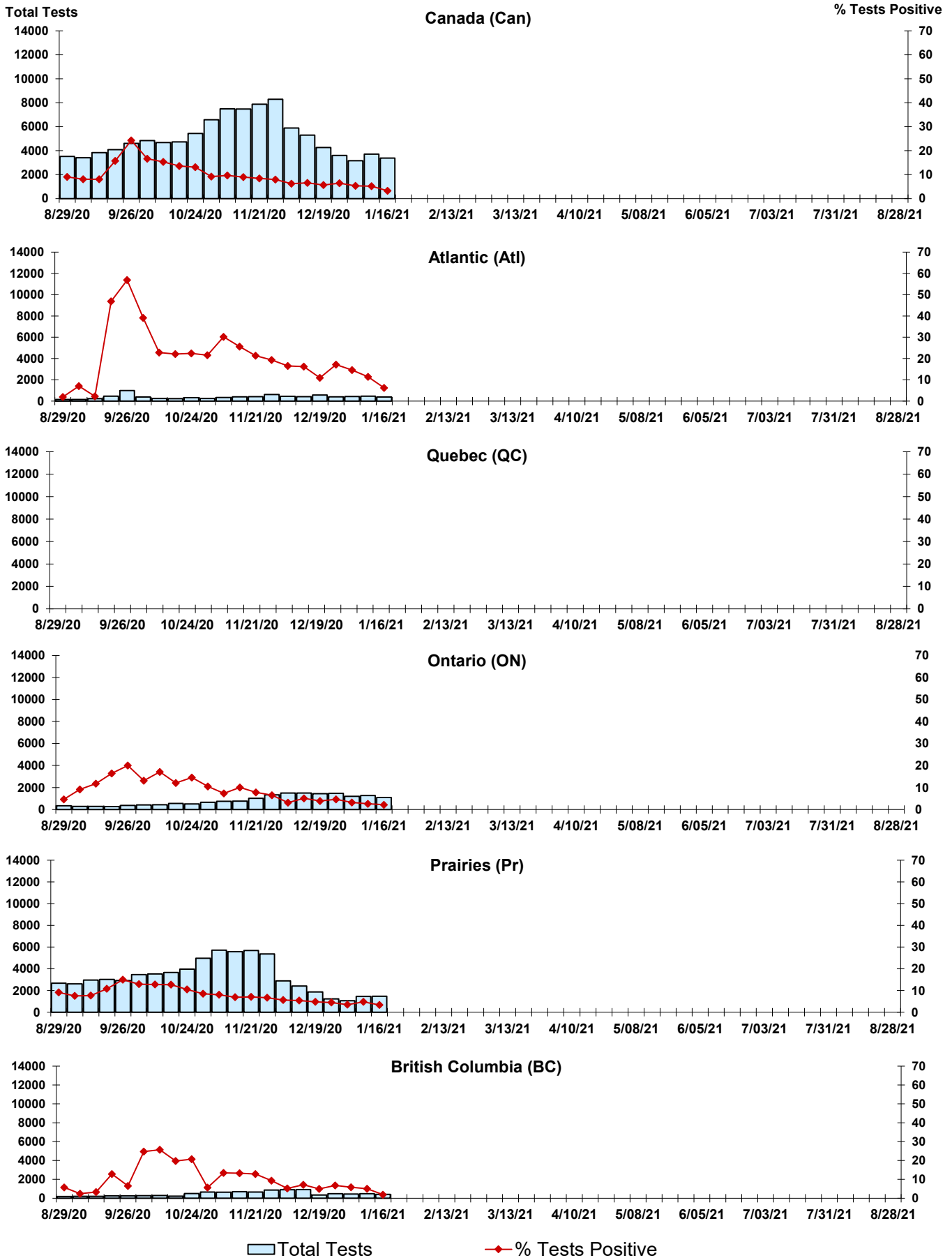
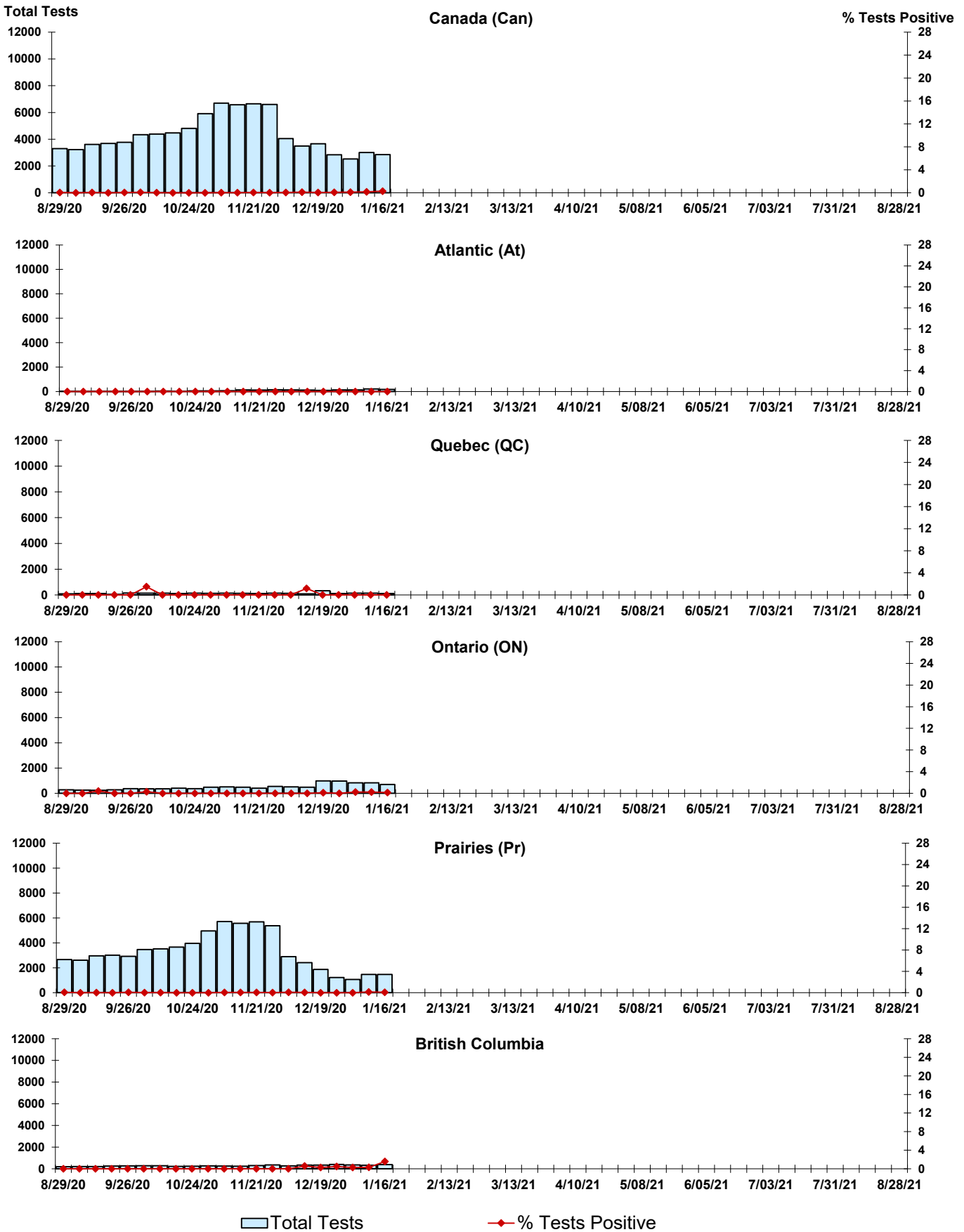


Figure 8: Positive Coronavirus (coron) Tests (%) in Canada by Region by Week of Report



Abbreviations:

A(H1N1)pdm09: Influenza A(H1N1)pdm09

A(H3): Influenza A(H3N2)

A (UnS): Influenza A (Unsubtyped)

Adeno: Adenovirus

CHEO: Children's Hospital of Eastern Ontario

Coron: Coronavirus

Enterovirus: Enterovirus

hMPV: human metapneumovirus

HSC: Health Sciences Centre

N.A.: Not Applicable

P.H.L.: Public Health Laboratory

P.H.O.L.: Public Health Ontario Laboratory

PIV: Parainfluenza

Rhino: Rhinovirus

RSV: Respiratory syncytial virus

UHN: University Health Network

Notes:

The data in the RVDSS report represent surveillance data available at the time of writing. Missing data are denoted by N.A.

Specimens from Yukon (YT), Northwest Territories (NT) and Nunavut (NU) are sent to reference laboratories in other provinces. Results reported for the Territories reflect the number of specimens that are identified as originating from YT, NT or NU.

Delays in the reporting of data may cause data to change retrospectively.

Due to reporting delays, the sum of weekly report totals do not add up to cumulative totals.