

RESPIRATORY VIRUS DETECTION REPORT

June 5 to June 11, 2022
(Surveillance Week 2022-23)



In this Respiratory Virus Report, the number of detections of coronavirus reflects only seasonal human coronaviruses, not the novel pandemic coronavirus (SARS-CoV-2) that causes COVID-19. For information on COVID-19, see the [Coronavirus disease \(COVID-19\): Outbreak update](#).

Overall Summary

Detections of seasonal respiratory viruses have decreased in recent weeks.

- Influenza is the most common seasonal respiratory virus detected in Canada. Influenza activity has continued to decrease but remains above the epidemic threshold.
 - A total of 945 influenza detections were reported (926 influenza A, 19 influenza B).
 - Activity of influenza A (6.7% positive) has decreased, but remains above expected levels for this time of year.
- Activity of other respiratory viruses is low, and is near expected levels for most viruses.
- The number of tests performed for all viruses was above expected levels.
- 31/34 sentinel laboratories reported surveillance data.

Abbreviations

Flu: Influenza

Flu A(H1N1)pdm09: Influenza A(H1N1)pdm09

Flu A(H3): Influenza A(H3N2)

Flu A (UnS): Influenza A(Unsubtyped)

RSV: Respiratory syncytial virus

HPIV: Human parainfluenza virus

HMPV: Human metapneumovirus

ADV: Adenovirus

EV/RV: Enterovirus/Rhinovirus

HCoV: Human coronavirus

Atl: Atlantic Canada

BC: British Columbia

Can: Canada

EORLA: Eastern Ontario Regional Laboratory Association

HSC: Health Sciences Centre

N.C.: Data not collected

N.R.: Data not reported for current week

ON: Ontario

PR: Prairies

P.H.O.L.: Public Health Ontario Laboratory

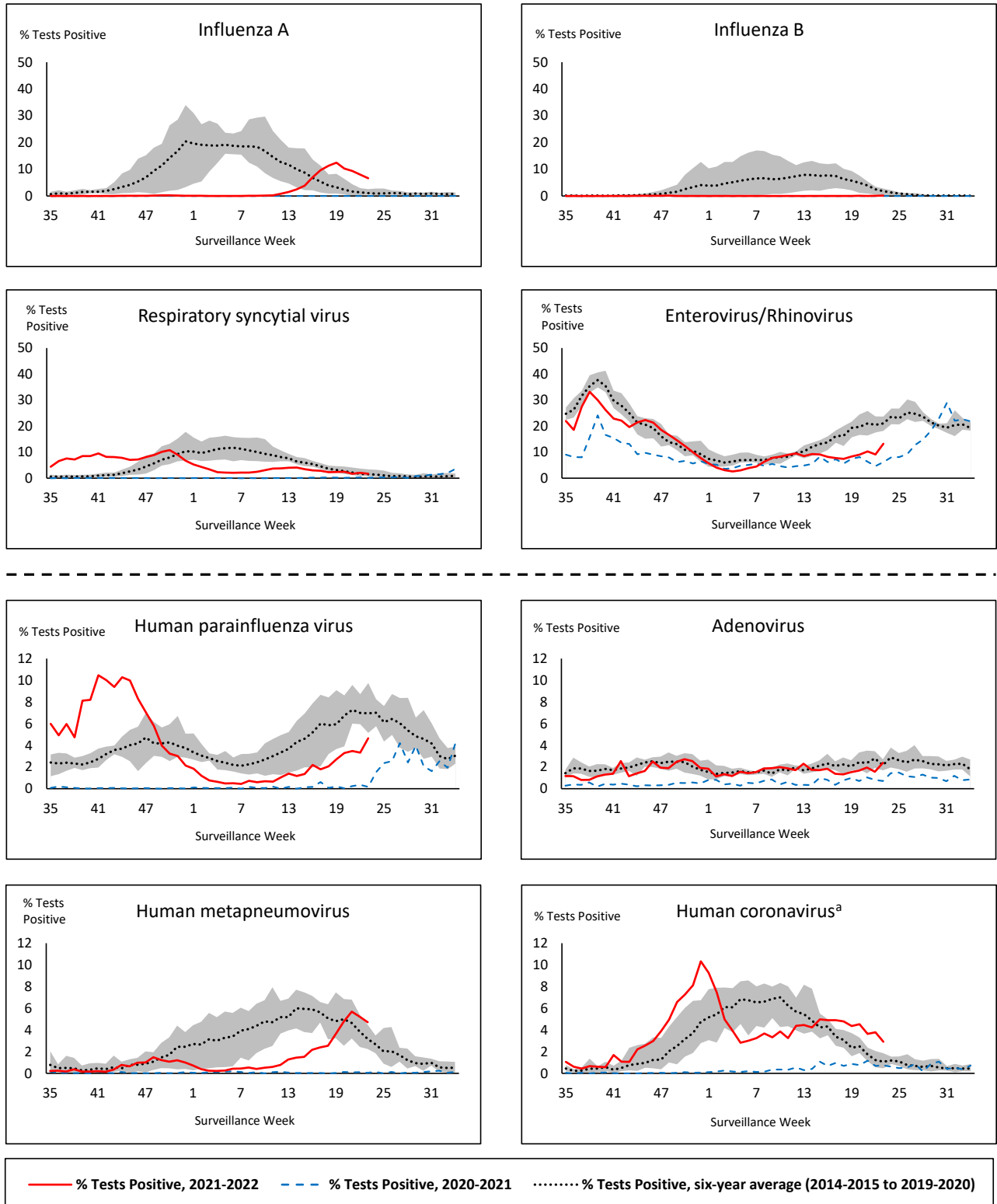
QC: Quebec

Terr: Territories of Canada

UHN: University Health Network



Figure 1: Positive respiratory virus tests (%) reported by participating laboratories in Canada by surveillance week compared to average and range from 2014-2015 to 2019-2020 season



Shaded area represents the maximum and minimum % of respiratory virus tests positive reported by week from seasons 2014-2015 to 2019-2020

Note: Data from week 11 of the 2019-2020 season onwards are excluded from the historical comparison due to the COVID-19 pandemic

Note: % Tests Positive scale changes across the dashed line

^a Human coronavirus excludes human coronaviruses SARS-CoV, MERS-CoV and SARS-CoV-2; Includes seasonal human coronaviruses HCoV-229E, HCoV-OC43, HCoV-NL63, HCoV-HKU1.

Table 1: Respiratory virus detections for the week ending June 11, 2022 (surveillance week 2022-23)

Reporting Laboratory	Flu Tested	A(H1)pdm09 Positive	A(H3) Positive	A(UnS) Positive	Total Flu A Positive	Total Flu B Positive	RSV Tested	RSV Positive	HPIV Tested	HPIV 1 Positive	HPIV 2 Positive	HPIV 3 Positive	HPIV 4 Positive	Other HPIV Positive	ADV Tested	ADV Positive	HMPV Tested	HMPV Positive	EV/RV Tested	EV/RV Positive	HCoV Tested	HCoV Positive
Newfoundland	543	0	0	27	27	0	543	8	543	0	2	0	0	17	543	2	543	5	543	47	N.C.	N.C.
Prince Edward Island	37	0	3	2	5	0	37	2	37	0	0	0	2	0	37	1	37	6	37	9	37	0
Nova Scotia	630	0	0	42	42	0	630	4	53	0	1	0	2	0	53	1	53	4	53	9	53	3
New Brunswick	405	0	18	53	71	0	297	14	63	0	0	1	4	0	63	4	63	4	63	13	63	2
Atlantic	1615	0	21	124	145	0	1507	28	696	0	3	1	8	17	696	8	696	19	696	78	153	5
Région Nord-Est	1422	8	0	69	77	5	584	0	0	0	0	0	0	0	0	0	2	1	N.C.	N.C.	0	0
Québec-Chaudière-Appalaches	668	0	0	65	65	12	668	0	25	0	0	1	0	0	251	7	250	3	N.C.	N.C.	104	2
Centre-du-Québec	631	0	0	71	71	1	503	1	21	0	0	1	0	0	21	1	21	1	N.C.	N.C.	21	1
Montréal-Laval	1585	0	0	69	69	0	995	6	345	2	10	7	0	0	345	20	345	7	N.C.	N.C.	363	13
Ouest du Québec	325	0	0	47	47	0	325	1	15	0	0	0	0	0	15	4	15	0	N.C.	N.C.	15	0
Montérégie	293	0	0	33	33	0	285	1	0	0	0	0	0	0	0	0	0	0	N.C.	N.C.	0	0
Province of Québec	4924	8	0	354	362	18	3360	9	406	2	10	9	0	0	632	32	633	12	N.C.	N.C.	503	16
P.H.O.L. - Ottawa	29	0	1	0	1	0	29	0	29	0	0	0	0	0	29	0	29	1	29	3	29	1
EORLA	222	0	0	14	14	0	222	2	34	0	0	0	0	0	34	3	34	5	34	3	34	0
P.H.O.L. - Kingston	23	0	0	0	0	0	23	0	23	0	0	0	0	1	23	2	23	2	23	7	23	0
UHN / Mount Sinai Hospital	414	0	0	3	3	1	414	3	14	0	0	0	0	0	14	0	14	0	14	0	14	0
P.H.O.L. - Toronto	226	0	24	0	9	0	226	2	226	0	0	0	0	13	228	1	226	7	226	29	226	18
Sick Kids Hospital - Toronto	N.R.	N.R.	N.R.	N.R.	N.R.	N.R.	N.R.	N.R.	N.R.	N.R.	N.R.	N.R.	N.R.	N.R.	N.R.	N.R.	N.R.	N.R.	N.R.	N.R.	N.R.	N.R.
Sunnybrook & Women's College HSC	N.R.	N.R.	N.R.	N.R.	N.R.	N.R.	N.R.	N.R.	N.R.	N.R.	N.R.	N.R.	N.R.	N.R.	N.R.	N.R.	N.R.	N.R.	N.R.	N.R.	N.R.	N.R.
P.H.O.L. - Sault Ste. Marie	1	0	0	0	0	0	1	0	1	0	0	0	0	0	1	0	1	0	1	0	1	0
P.H.O.L. - Timmins	7	0	0	0	0	0	7	0	7	0	0	0	0	0	7	0	7	0	7	1	7	0
St. Joseph's - London	70	0	0	3	3	0	70	3	70	0	0	0	0	1	70	0	70	10	70	9	1	0
P.H.O.L. - London	77	0	5	1	6	0	77	2	77	0	0	0	0	3	77	1	77	10	77	10	77	1
P.H.O.L. - Orillia	37	0	1	0	1	0	37	4	37	0	0	0	0	5	37	2	37	8	37	7	37	5
P.H.O.L. - Thunder Bay	5	0	0	0	0	0	5	0	5	0	0	0	0	0	5	0	5	1	5	1	5	0
P.H.O.L. - Sudbury	10	0	0	0	0	0	10	0	10	0	0	0	0	0	10	0	10	1	10	1	10	1
P.H.O.L. - Hamilton	54	0	3	1	4	0	54	1	54	0	0	0	0	7	54	4	54	6	54	5	54	2
P.H.O.L. - Peterborough	7	0	0	0	0	0	7	2	7	0	0	0	0	0	7	1	7	0	7	0	7	0
St. Joseph's - Hamilton	0	0	0	0	0	0	0	0	0	0	0	0	0	0	0	0	0	0	0	0	0	0
Province of Ontario	1182	0	34	22	41	1	1182	19	594	0	0	0	0	30	596	14	594	51	594	76	525	28
Province of Manitoba	532	0	5	20	25	0	532	18	125	0	3	1	3	0	125	3	133	11	125	23	133	1
Province of Saskatchewan	445	0	0	29	29	0	445	16	170	0	4	7	2	0	169	6	169	7	169	30	170	4
Province of Alberta	2166	0	165	31	196	0	1820	55	783	0	9	21	6	0	783	11	783	43	772	85	783	14
Prairies	3143	0	170	80	250	0	2797	89	1078	0	16	29	11	0	1077	20	1085	61	1066	138	1086	19
British Columbia	2977	0	39	0	114	0	2894	43	446	0	1	4	4	5	446	8	446	20	435	73	435	11
Yukon	5	0	0	0	2	0	5	0	N.C.	N.C.	N.C.	N.C.	N.C.	N.C.	N.C.	N.C.	N.C.	N.C.	N.C.	N.C.	N.C.	N.C.
Northwest Territories	65	0	12	0	12	0	65	13	8	0	0	0	0	0	8	0	8	0	64	12	8	0
Nunavut	N.R.	N.R.	N.R.	N.R.	N.R.	N.R.	N.R.	N.R.	N.C.	N.C.	N.C.	N.C.	N.C.	N.C.	N.C.	N.C.	N.C.	N.C.	N.C.	N.C.	N.C.	N.C.
Territories	70	0	12	0	14	0	70	13	8	0	0	0	0	0	8	0	8	0	64	12	8	0
CANADA	13911	8	276	580	926	19	11810	201	3228	2	30	43	23	52	3455	82	3462	163	2855	377	2710	79

The data in the RVDSS report represent surveillance data available at the time of writing. Data missing from the current week are denoted by N.R. Data not collected by reporting lab denoted by N.C.

The reporting laboratory previously listed as CHEO - Ottawa is now listed as EORLA to better reflect data submitted by this provider.

Specimens from Yukon (YT) are sent to reference laboratories in British Columbia and reported results reflect specimens identified as originating from YT.

Results from British Columbia comprise of specimens from the following sites: BC Children's and Women's Hospital, Children's and Women's Hospital Laboratory, Fraser Health Medical Microbiology Laboratory, Island Health, Providence Health Care, Powell River Hospital , St. Paul's Hospital , Vancouver General Hospital, Victoria General Hospital, BCCDC Public Health Laboratory, Interior Health Authority sites and Northern Health Authority sites.

Delays in the reporting of data may cause data to change retrospectively.

For British Columbia, only data from subtyped influenza A specimens are included in the weekly number of influenza detections. The sum of A(H1N1)pdm09, A(H3), and A(UnS) positive results may not equal the sum of total Flu A positive results.

Due to different testing protocols of laboratories across Canada, influenza A subtype detection counts may not be included in total influenza A detection counts, as some subtype detections are not available through routine testing but are subsequently reported if further subtype testing is conducted. In these instances, subtype counts do not reflect influenza A detections intended to be captured by routine surveillance, and are excluded from total detections and percent positivity.

Figure 2: Number of positive respiratory virus tests reported by participating laboratories in Canada by surveillance week

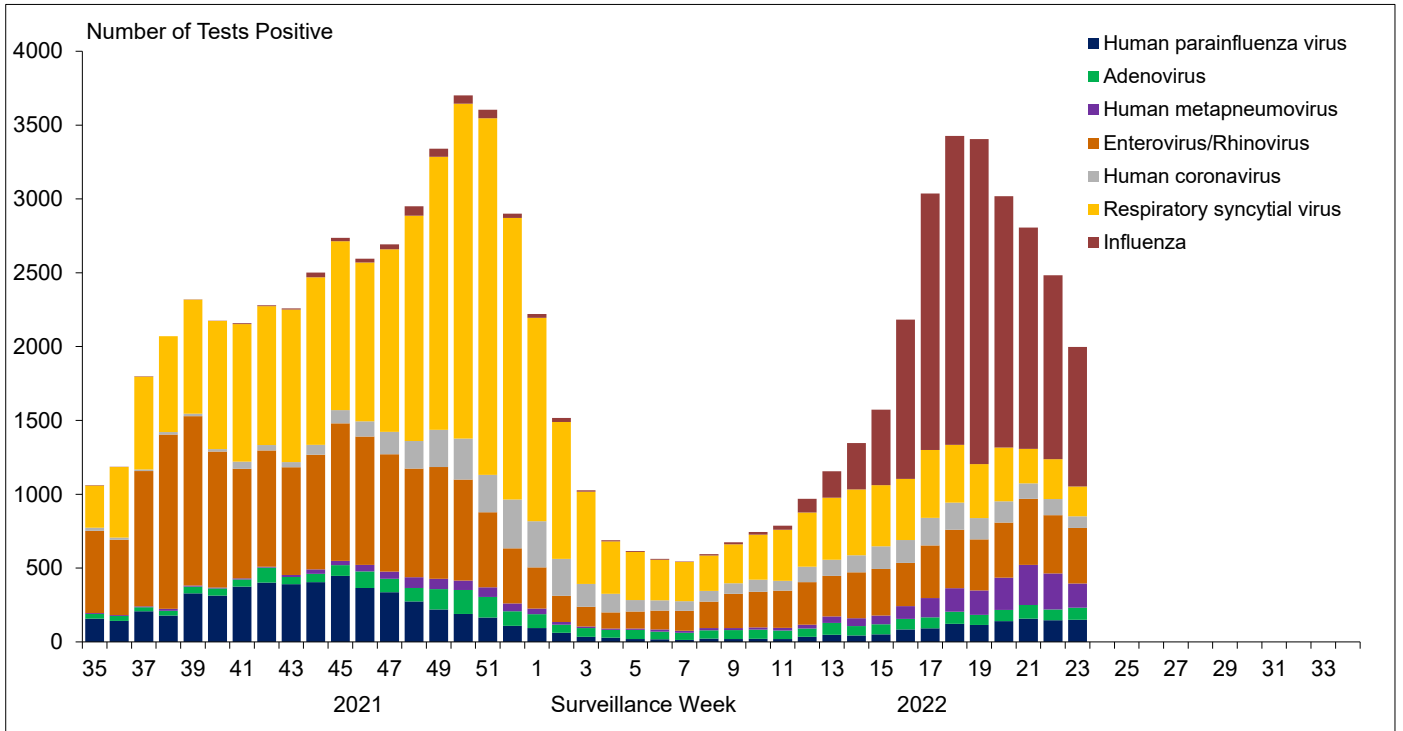


Figure 3: Positive Influenza (Flu) tests (%) in Canada by region by surveillance week

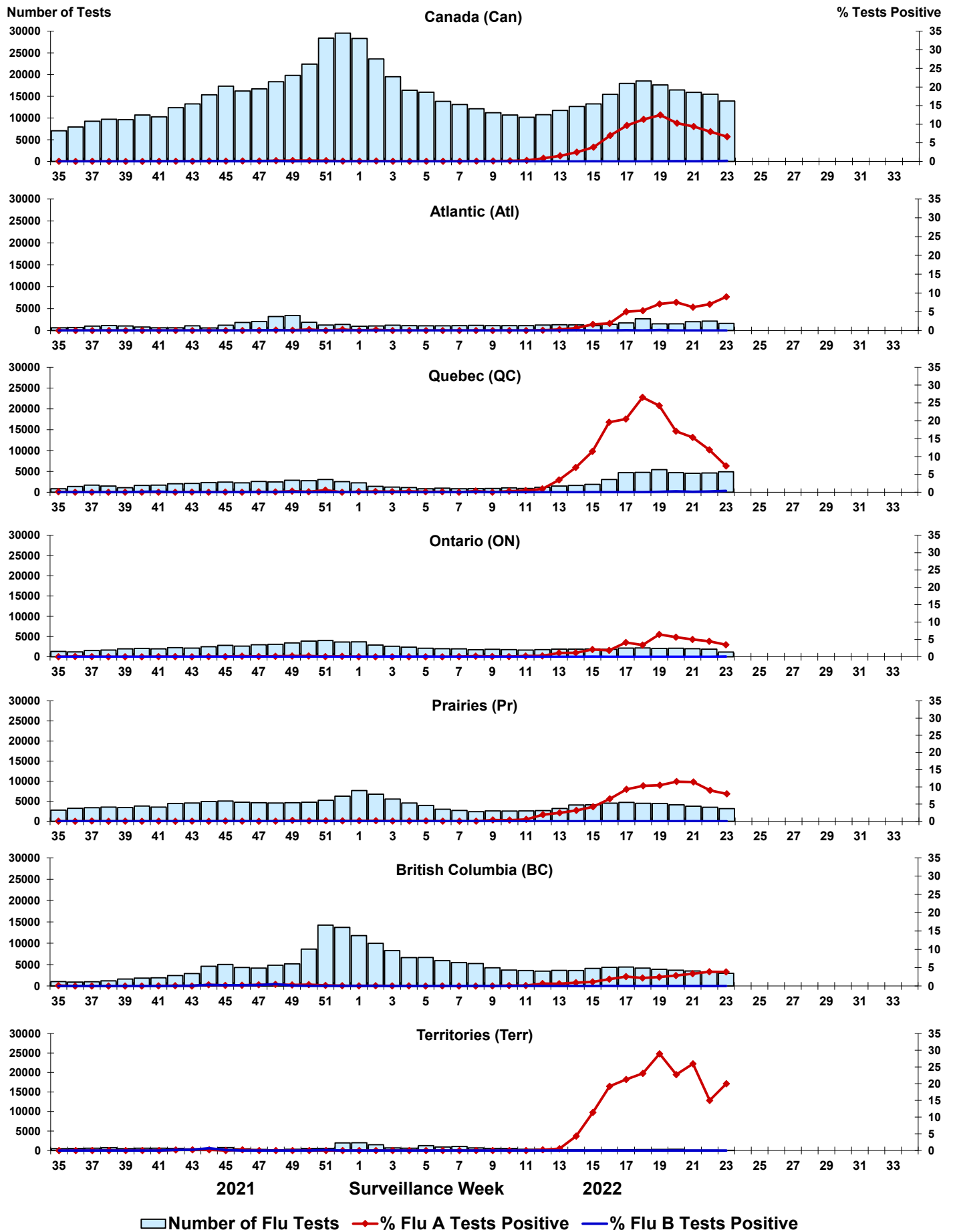


Figure 4: Positive Respiratory syncytial virus (RSV) tests (%) in Canada by region by surveillance week

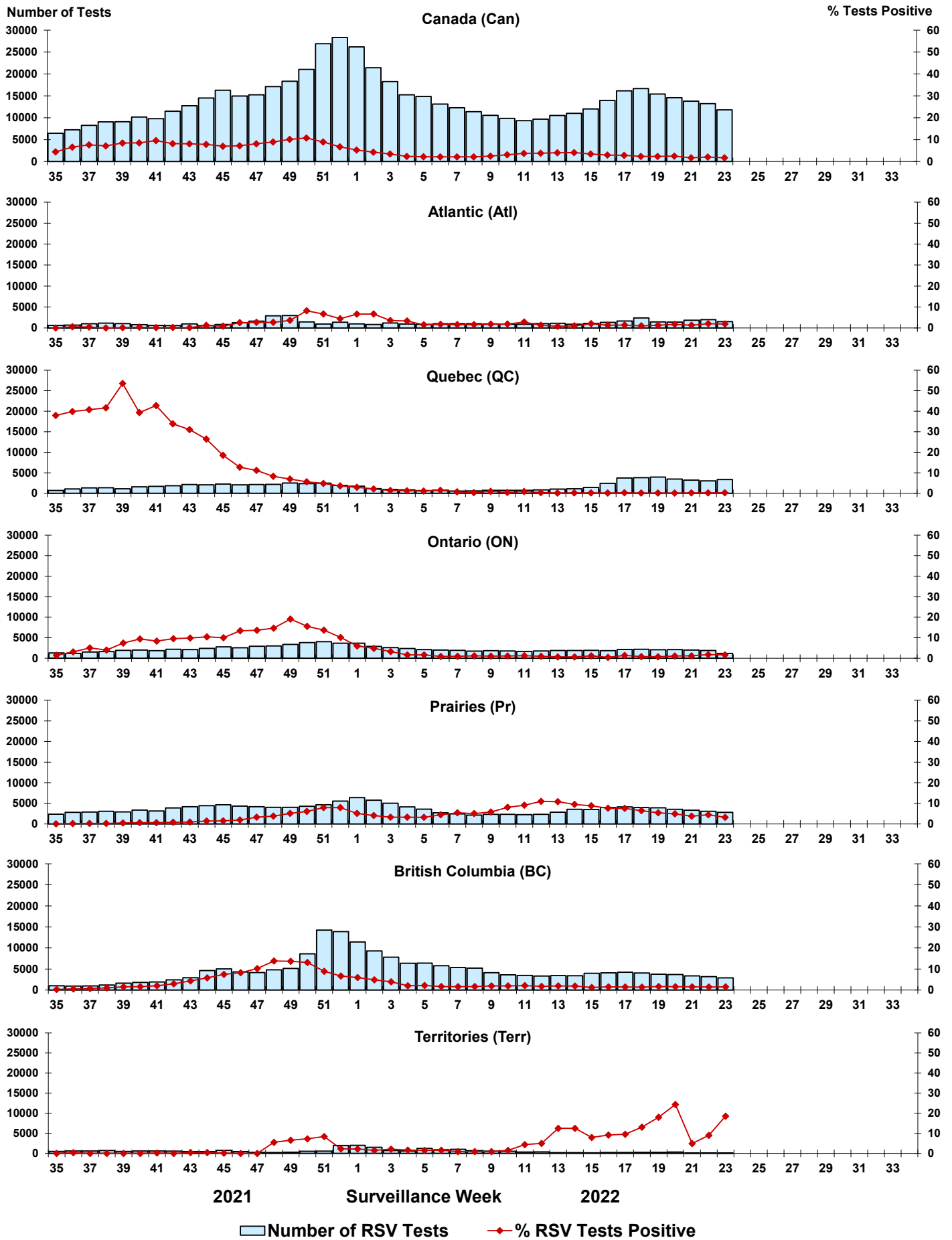


Figure 5: Positive Human parainfluenza virus (HPIV) tests (%) in Canada by region by surveillance week

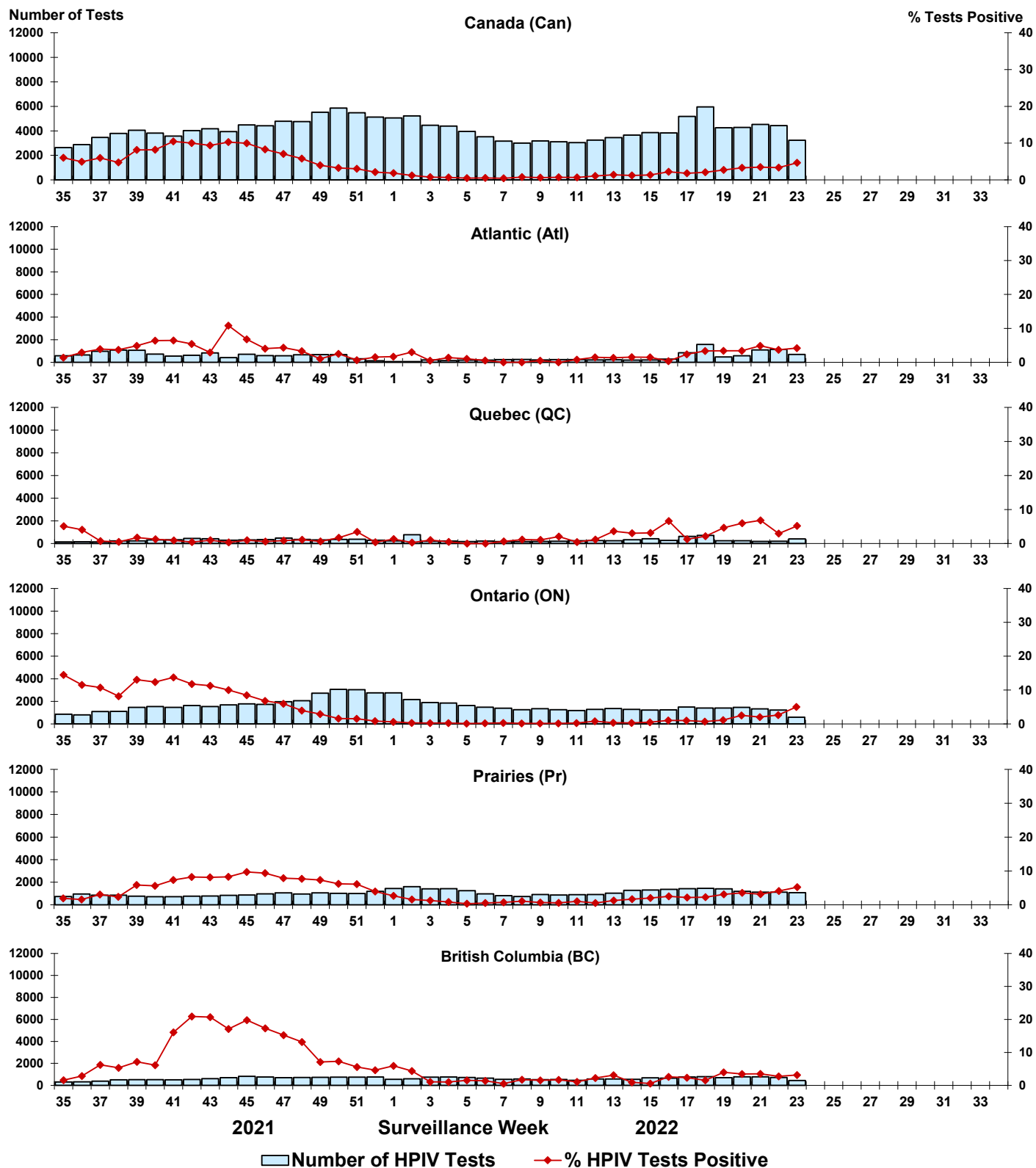


Figure 6: Positive Adenovirus (ADV) tests (%) in Canada by region by surveillance week

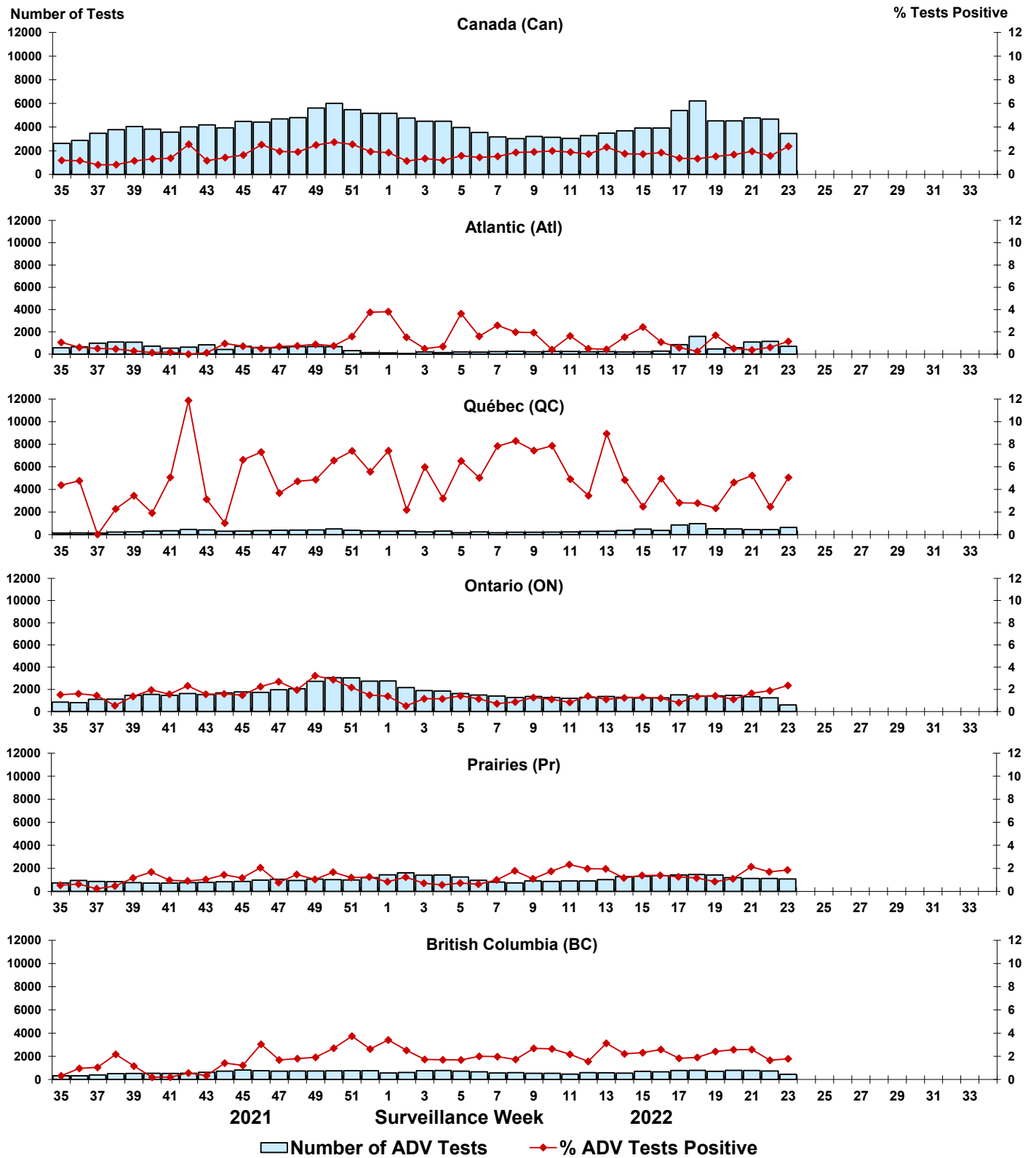


Figure 7: Positive Human metapneumovirus (HMPV) tests (%) in Canada by region by surveillance week

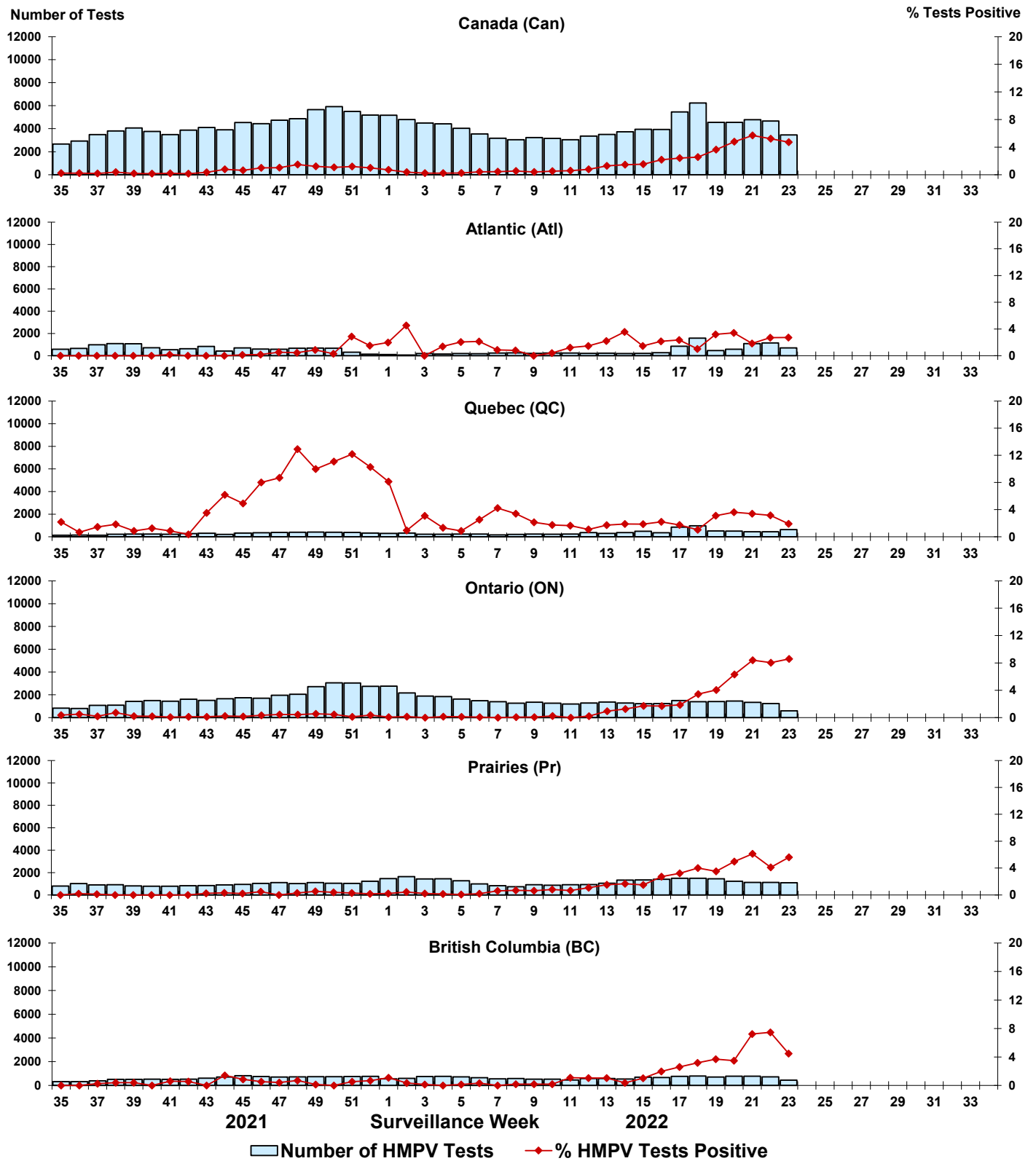


Figure 8: Positive Enterovirus/Rhinovirus (EV/RV) tests (%) in Canada by region by surveillance week

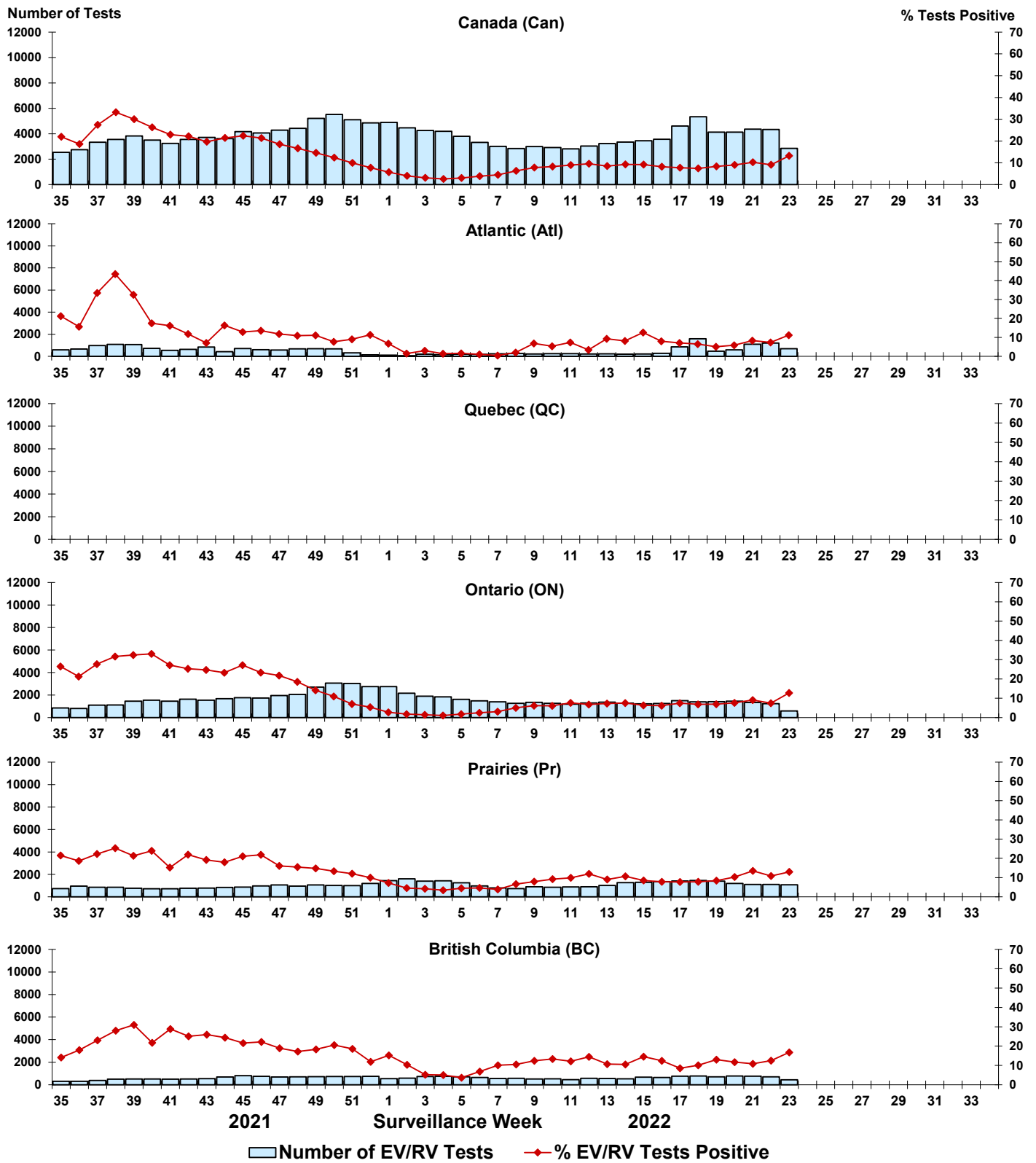


Figure 9: Positive Human coronavirus (HCoV) tests (%) in Canada by region by surveillance week

