

Respiratory Virus Report, Week 24 - ending June 19, 2021

The Respiratory Virus Detection Surveillance System collects data from select laboratories across Canada on the number of tests performed and the number of tests positive for influenza and other respiratory viruses. Data are reported on a weekly basis year-round to the Centre for Immunization and Respiratory Infectious Diseases (CIRID), Public Health Agency of Canada. These data are also summarized in the weekly FluWatch report.

In this Respiratory Virus Report, the number of detections of coronavirus reflects only seasonal human coronaviruses, not the novel pandemic coronavirus (SARS-CoV2) that causes COVID-19. For information on COVID-19, see the [Coronavirus disease \(COVID-19\): Outbreak update](#).

Table 1: Respiratory Virus Detections/Isolations for the week ending June 19, 2021 (Reporting Week 202124)

Reporting Laboratory	Flu Tested	A(H1N1)pdm09 Positive	A(H3) Positive	A(UnS) Positive	Total Flu A Positive	Total Flu B Positive	RSV Tested	RSV Positive	PIV Tested	PIV 1 Positive	PIV 2 Positive	PIV 3 Positive	PIV 4 Positive	Other PIV Positive	Adeno Tested	Adeno Positive	hMPV Tested	hMPV Positive	Entero/Rhino Tested	Entero/Rhino Positive	Coron Tested	Coron Positive
Newfoundland	230	0	0	0	0	0	230	0	230	0	0	0	0	0	230	1	230	0	230	27	N.A.	N.A.
Prince Edward Island	46	0	0	0	0	0	46	0	46	0	0	0	0	0	46	1	46	0	46	1	46	0
Nova Scotia	56	0	0	0	0	0	56	0	55	0	0	0	0	0	55	0	55	0	55	1	55	0
New Brunswick	93	0	0	0	0	0	57	0	16	0	0	0	0	0	16	0	16	0	16	0	16	0
Atlantic	425	0	0	0	0	0	389	0	347	0	0	0	0	0	347	2	347	0	347	29	117	0
Région Nord-Est	347	0	0	0	0	0	14	0	0	0	0	0	0	0	0	0	0	0	N.A.	N.A.	0	0
Québec-Chaudière-Appalaches	6	0	0	0	0	0	9	2	21	0	0	3	0	0	21	2	21	0	N.A.	N.A.	21	2
Centre-du-Québec	6	0	0	0	0	0	6	0	7	0	0	1	0	0	7	0	7	0	N.A.	N.A.	7	0
Montréal-Laval	433	0	0	0	0	0	433	13	126	15	0	18	0	0	126	8	126	0	N.A.	N.A.	126	3
Ouest du Québec	55	0	0	0	0	0	55	0	0	0	0	0	0	0	0	0	0	0	N.A.	N.A.	0	0
Montérégie	12	0	0	0	0	0	12	0	0	0	0	0	0	0	0	0	0	0	N.A.	N.A.	0	0
Province of Québec	859	0	0	0	0	0	529	15	154	15	0	22	0	0	154	10	154	0	N.A.	N.A.	154	5
P.H.O.L. - Ottawa	10	0	0	0	0	0	10	0	10	0	0	0	0	0	10	0	10	0	10	0	10	0
CHEO - Ottawa	51	0	0	0	0	0	51	0	51	0	0	0	0	0	29	1	29	0	29	2	29	0
P.H.O.L. - Kingston	7	0	0	0	0	0	7	0	3	0	0	0	0	0	3	0	3	0	3	0	3	0
UHN / Mount Sinai Hospital	402	0	0	0	0	0	402	0	53	0	0	0	0	0	53	0	53	0	53	2	53	0
P.H.O.L. - Toronto	79	0	0	0	0	0	79	0	69	0	0	0	0	0	69	1	69	0	69	2	69	0
Sick Kids Hospital - Toronto	N.A.	N.A.	N.A.	N.A.	N.A.	N.A.	N.A.	N.A.	N.A.	N.A.	N.A.	N.A.	N.A.	N.A.	N.A.	N.A.	N.A.	N.A.	N.A.	N.A.	N.A.	N.A.
Sunnybrook & Women's College HSC	N.A.	N.A.	N.A.	N.A.	N.A.	N.A.	N.A.	N.A.	N.A.	N.A.	N.A.	N.A.	N.A.	N.A.	N.A.	N.A.	N.A.	N.A.	N.A.	N.A.	N.A.	N.A.
P.H.O.L. - Sault Ste. Marie	0	0	0	0	0	0	0	0	0	0	0	0	0	0	0	0	0	0	0	0	0	0
P.H.O.L. - Timmins	3	0	0	0	0	0	3	0	3	0	0	0	0	0	3	0	3	0	3	0	3	0
St. Joseph's - London	N.A.	N.A.	N.A.	N.A.	N.A.	N.A.	N.A.	N.A.	N.A.	N.A.	N.A.	N.A.	N.A.	N.A.	N.A.	N.A.	N.A.	N.A.	N.A.	N.A.	N.A.	N.A.
P.H.O.L. - London	16	0	0	0	0	0	16	0	12	0	0	0	0	0	12	0	12	0	12	0	12	0
P.H.O.L. - Orillia	3	0	0	0	0	0	3	0	2	0	0	0	0	0	2	0	2	0	2	0	2	0
P.H.O.L. - Thunder Bay	2	0	0	0	0	0	2	0	2	0	0	0	0	0	2	0	2	0	2	0	2	0
P.H.O.L. - Sudbury	4	0	0	0	0	0	4	0	3	0	0	0	0	0	3	1	3	0	3	0	3	0
P.H.O.L. - Hamilton	5	0	0	0	0	0	5	0	4	0	0	0	0	0	4	0	4	0	4	2	4	0
P.H.O.L. - Peterborough	8	0	0	0	0	0	8	0	8	0	0	0	0	0	8	0	8	0	8	0	8	0
St. Joseph's - Hamilton	131	0	0	0	0	0	131	0	131	0	0	0	0	0	131	0	131	0	131	5	0	0
Province of Ontario	721	0	0	0	0	0	721	0	351	0	0	0	0	0	329	3	329	0	329	13	198	0
Province of Manitoba	1334	0	0	0	0	0	1334	0	13	0	0	0	0	0	13	0	73	0	13	1	73	0
Province of Saskatchewan	54	0	0	0	0	0	53	0	23	0	0	0	0	0	23	0	23	0	23	5	23	1
Province of Alberta	N.A.	N.A.	N.A.	N.A.	N.A.	N.A.	N.A.	N.A.	N.A.	N.A.	N.A.	N.A.	N.A.	N.A.	N.A.	N.A.	N.A.	N.A.	N.A.	N.A.	N.A.	N.A.
Prairies	1388	0	0	0	0	0	1387	0	36	0	0	0	0	0	36	0	96	0	36	6	96	1
British Columbia	793	0	0	0	0	0	793	0	320	0	0	0	0	0	320	6	320	0	313	23	311	0
Yukon	622	0	0	0	0	0	622	0	N.A.	N.A.	N.A.	N.A.	N.A.	N.A.	N.A.	N.A.	N.A.	N.A.	N.A.	N.A.	N.A.	N.A.
Northwest Territories	0	0	0	0	0	0	0	0	0	0	0	0	0	0	0	0	0	0	0	0	0	0
Nunavut	1	0	0	0	0	0	1	0	1	0	0	0	0	0	1	0	1	0	1	0	0	0
Territories	623	0	0	0	0	0	623	0	1	0	0	0	0	0	1	0	1	0	1	0	0	0
CANADA	4809	0	0	0	0	0	4442	15	1209	15	0	22	0	0	1187	21	1247	0	1026	71	876	6

The data in the RVDSS report represent surveillance data available at the time of writing. Missing data are denoted by N.A.

Specimens from Yukon (YT), Northwest Territories (NT) and Nunavut (NU) are sent to reference laboratories in other provinces and reported results reflect specimens identified as originating from YT, NT or NU.

Results from British Columbia comprise of specimens from the following sites: BC Children's and Women's Hospital, Fraser Health Medical Microbiology Laboratory, Island Health, Providence Health Care, Powell River Hospital, St. Paul's Hospital, Vancouver General Hospital, Victoria General Hospital, BCCDC Public Health Laboratory, Interior Health Authority sites and Northern Health Authority sites.

Delays in the reporting of data may cause data to change retrospectively.

Influenza co-detections may cause the sum of A(H1N1)pdm09, A(H3), and A(UnS) positive results to exceed the sum of Total Flu A Positive results.

Table 2: Respiratory Virus Detections/Isolations for the period August 23, 2020 - June 19, 2021 (Reporting Weeks 202035-202124)

Reporting Laboratory	Flu Tested	A(H1N1)pdm09 Positive	A(H3) Positive	A(UnS) Positive	Total Flu A Positive	Total Flu B Positive	RSV Tested	RSV Positive	PIV Tested	PIV 1 Positive	PIV 2 Positive	PIV 3 Positive	PIV 4 Positive	Other PIV Positive	Adeno Tested	Adeno Positive	hMPV Tested	hMPV Positive	Entero/Rhino Tested	Entero/Rhino Positive	Coron Tested	Coron Positive
Newfoundland	13053	0	0	0	0	0	13052	10	13052	1	0	3	0	0	13065	53	12465	2	13053	2202	N.A.	N.A.
Prince Edward Island	4021	0	0	0	0	0	4021	4	4017	3	0	0	1	0	4017	39	4017	0	4017	466	4017	1
Nova Scotia	8447	0	0	0	0	0	8450	0	1306	0	10	0	1	0	1306	15	1306	1	1306	86	1333	0
New Brunswick	54448	0	0	0	0	1	20352	0	1543	0	0	0	0	0	1534	10	1534	0	1534	58	1489	2
Atlantic	79969	0	0	0	0	1	45875	14	19918	4	10	3	2	0	19922	117	19322	3	19910	2812	6839	3
Région Nord-Est	8204	0	0	0	0	0	1150	1	7	0	0	0	0	0	7	1	7	0	N.A.	N.A.	7	0
Québec-Chaudière-Appalaches	787	0	0	1	1	0	904	2	707	0	0	3	0	0	709	40	704	0	N.A.	N.A.	687	29
Centre-du-Québec	932	0	0	0	0	0	940	2	399	0	0	3	0	0	397	22	399	0	N.A.	N.A.	396	16
Montréal-Laval	10614	0	0	0	0	0	9659	199	4669	30	0	41	0	0	4723	175	4653	2	N.A.	N.A.	4653	121
Ouest du Québec	2531	0	0	0	0	0	2474	0	0	0	0	0	0	0	0	0	0	0	N.A.	N.A.	0	0
Montérégie	1227	0	0	0	0	0	1227	1	0	0	0	0	0	0	0	0	0	0	N.A.	N.A.	0	0
Province of Québec	24295	0	0	1	1	0	16354	205	5782	30	0	47	0	0	5836	238	5763	2	N.A.	N.A.	5743	166
P.H.O.L. - Ottawa	614	0	0	0	0	0	614	1	513	0	0	0	0	0	513	0	512	0	513	24	512	1
CHEO - Ottawa	5207	0	0	1	1	1	4804	5	1033	0	0	0	0	0	939	15	939	1	939	99	939	3
P.H.O.L. - Kingston	879	0	0	1	1	0	879	0	576	0	0	0	0	0	576	4	570	0	576	108	570	0
UHN / Mount Sinai Hospital	15114	2	0	2	4	1	15045	6	10584	3	2	3	8	0	8958	10	10544	10	10341	103	8380	6
P.H.O.L. - Toronto	6751	0	0	0	0	0	6748	3	5805	0	0	0	0	3	5806	16	5803	2	5805	162	5803	5
Sick Kids Hospital - Toronto	1237	0	0	0	0	0	0	0	1237	0	0	0	0	0	1237	18	1237	0	1237	119	1237	1
Sunnybrook & Women's College HSC	0	0	0	0	0	0	0	0	0	0	0	0	0	0	0	0	0	0	0	0	0	0
P.H.O.L. - Sault Ste. Marie	176	0	0	2	2	0	174	0	100	0	0	0	0	0	100	0	100	0	100	6	100	0
P.H.O.L. - Timmins	627	0	0	0	0	0	627	0	170	0	0	0	0	0	170	0	169	0	170	31	169	0
St. Joseph's - London	218	0	0	0	0	0	218	0	55	0	0	0	0	0	55	0	55	0	91	8	36	0
P.H.O.L. - London	1951	1	0	5	6	2	1941	0	1316	0	0	0	0	2	1316	2	1310	0	1316	127	1310	3
P.H.O.L. - Orillia	406	0	0	1	1	0	404	0	201	0	0	0	0	0	201	1	201	0	201	12	201	0
P.H.O.L. - Thunder Bay	417	0	0	0	0	0	417	0	398	0	0	0	0	0	399	3	398	0	398	138	398	0
P.H.O.L. - Sudbury	511	0	0	0	0	0	509	0	343	0	0	0	0	4	343	3	343	0	343	30	343	4
P.H.O.L. - Hamilton	1541	0	0	0	0	0	1486	1	1235	0	0	0	0	0	1235	2	1235	0	1235	101	1235	0
P.H.O.L. - Peterborough	542	0	0	1	1	0	496	0	388	0	0	0	0	0	388	0	387	0	388	24	387	0
St. Joseph's - Hamilton	10064	0	0	0	0	0	10064	3	10064	0	2	0	0	0	10064	23	10064	0	10064	461	0	0
Province of Ontario	46255	3	0	13	16	4	44426	19	34018	3	2	5	8	9	32300	97	33867	13	33717	1553	21620	23
Manitoba	60945	0	1	3	4	2	60935	68	2820	0	1	1	0	0	2820	20	3727	1	2820	169	3727	6
Province of Saskatchewan	171899	0	0	1	1	0	27032	4	2006	0	0	1	1	0	2006	17	2006	4	2006	200	2006	12
Province of Alberta	129622	5	0	6	11	0	78539	0	78539	2	19	4	8	0	78539	158	78539	11	78539	6614	78539	30
Prairies	362466	5	1	10	16	2	166506	72	83365	2	20	6	9	0	83365	195	84272	16	83365	6983	84272	48
British Columbia	89348	3	8	1	10	8	88849	6	19204	1	4	1	13	5	19750	121	19547	67	19354	1566	15219	22
Yukon	5935	0	0	8	8	7	5860	4	N.A.	N.A.	N.A.	N.A.	N.A.	N.A.	N.A.	N.A.	N.A.	N.A.	N.A.	N.A.	N.A.	N.A.
Northwest Territories	1194	0	0	0	0	0	1146	0	1146	0	0	0	1	0	1146	12	1146	1	1146	326	1146	1
Nunavut	1125	0	0	0	0	0	1102	0	1102	3	1	0	0	0	1102	25	1102	5	1102	282	191	0
Territories	8254	0	0	8	8	7	8108	4	2248	3	1	0	1	0	2248	37	2248	6	2248	608	1337	1
CANADA	610587	11	9	33	51	22	370118	320	164535	43	37	62	33	14	163421	805	165019	107	158594	13522	135030	263

The data in the RVDSS report represent surveillance data available at the time of writing. Missing data are denoted by N.A.

Specimens from YT, NT and NU are sent to reference laboratories in other provinces and reported results reflect specimens identified as originating from YT, NT or NU.

Results from British Columbia comprise of specimens from the following sites: BC Children's and Women's Hospital, Children's and Women's Hospital Laboratory, Fraser Health Medical Microbiology Laboratory, Island Health, Providence Health Care, Powell River Hospital, St. Paul's Hospital, Vancouver General Hospital, Victoria General Hospital, BCCDC Public Health Laboratory, Interior Health Authority sites and Northern Health Authority sites.

Delays in the reporting of data may cause data to change retrospectively.

Due to reporting delays, the sum of weekly report totals do not add up to cumulative totals.

Influenza co-detections may cause the sum of A(H1N1)pdm09, A(H3), and A(UnS) positive results to exceed the sum of Total Flu A Positive results.

Figure 1: Number positive laboratory tests for other respiratory viruses by report week, Canada, 2020-21

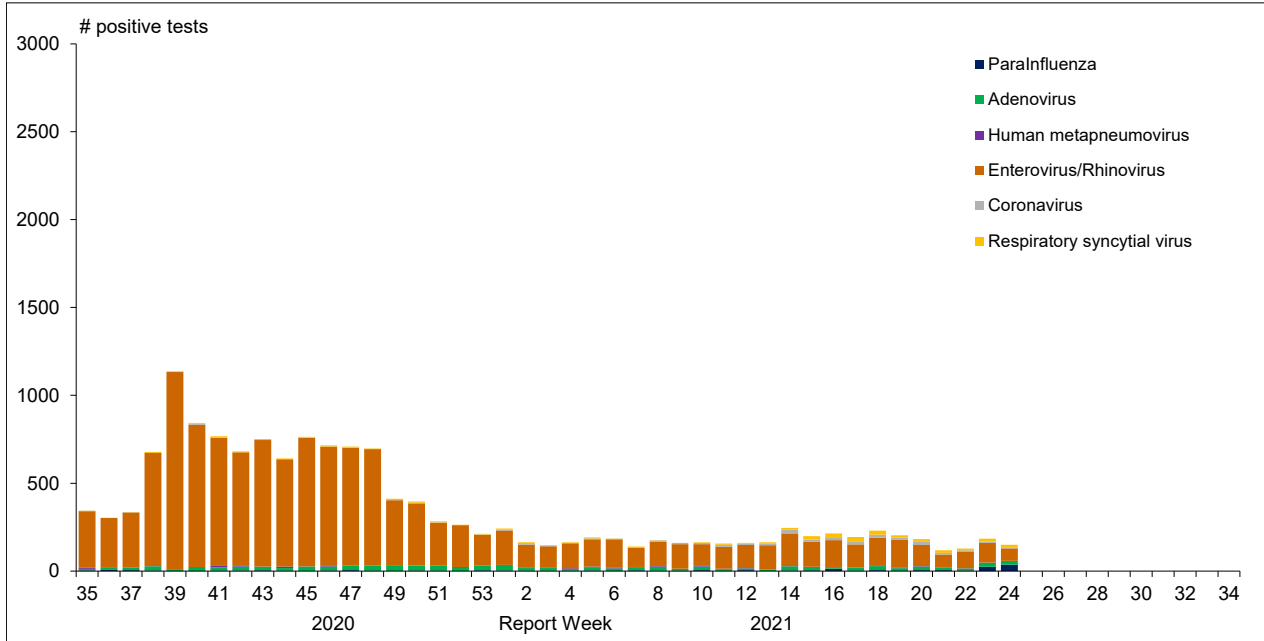


Figure 2 : Positive Influenza Tests (%) in Canada by Region by Week of Report

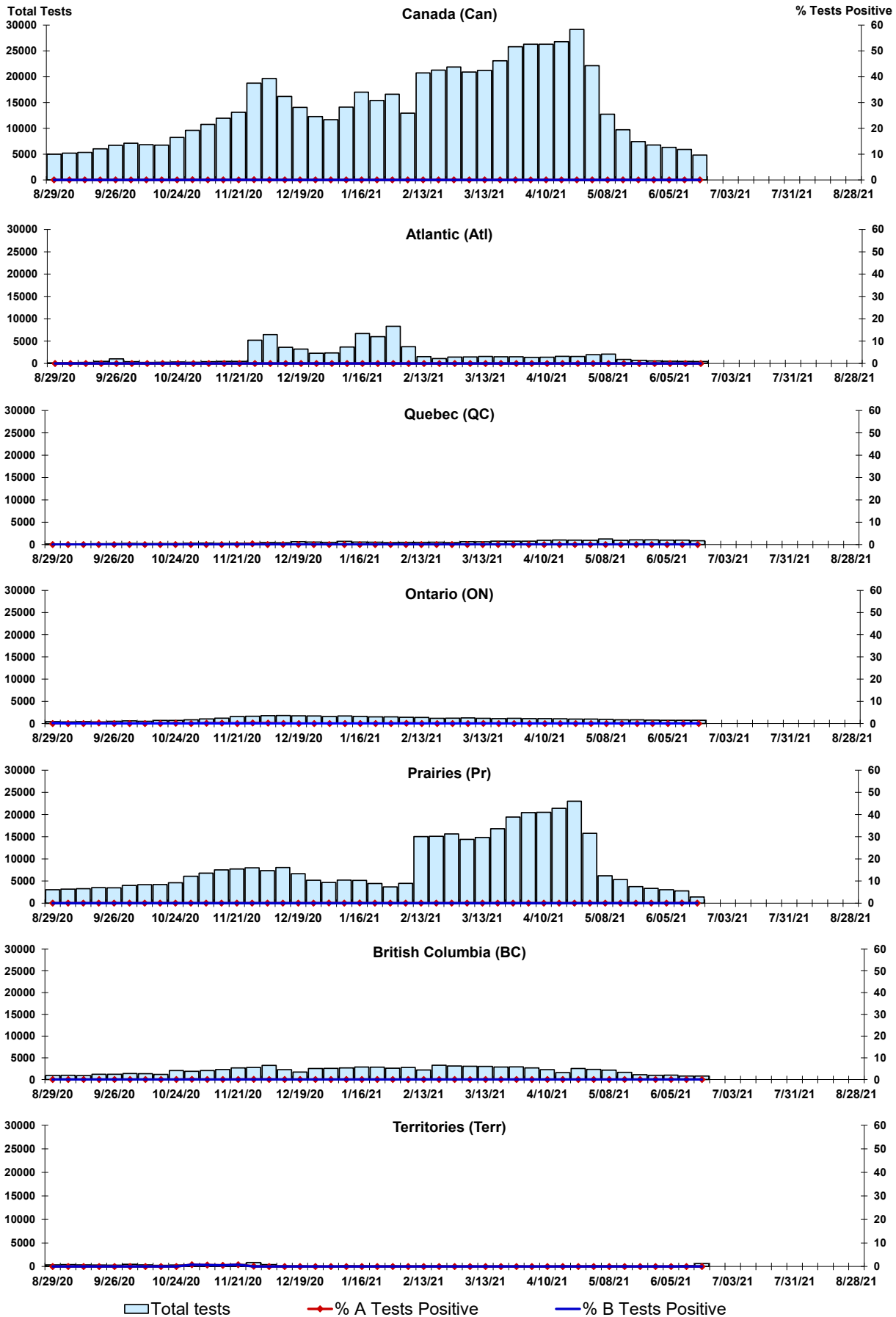


Figure 3: Positive Respiratory syncytial virus (RSV) Tests (%) in Canada by Region by Week of Report

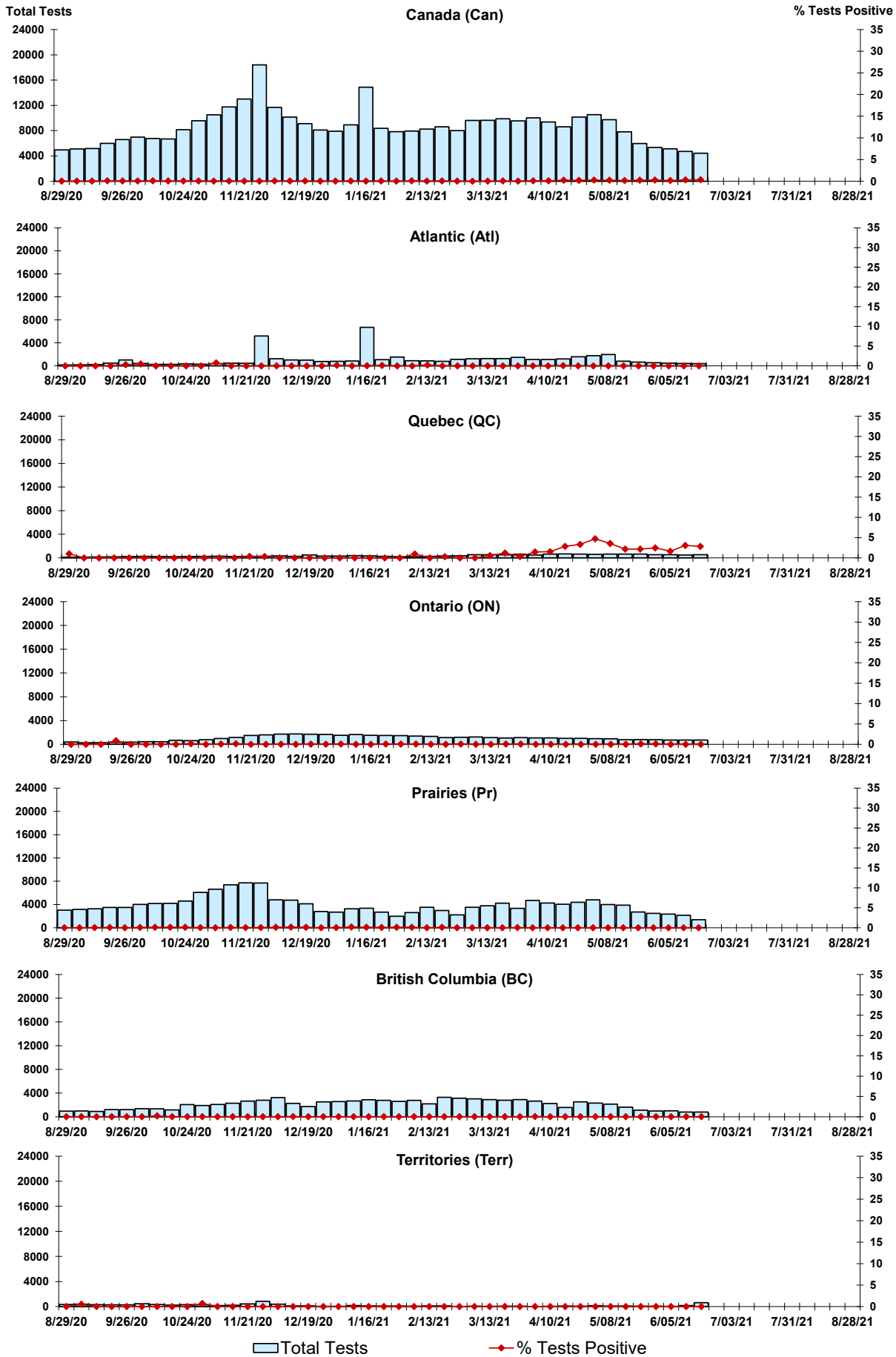


Figure 4: Positive Parainfluenza (PIV) Tests (%) in Canada by Region by Week of Report

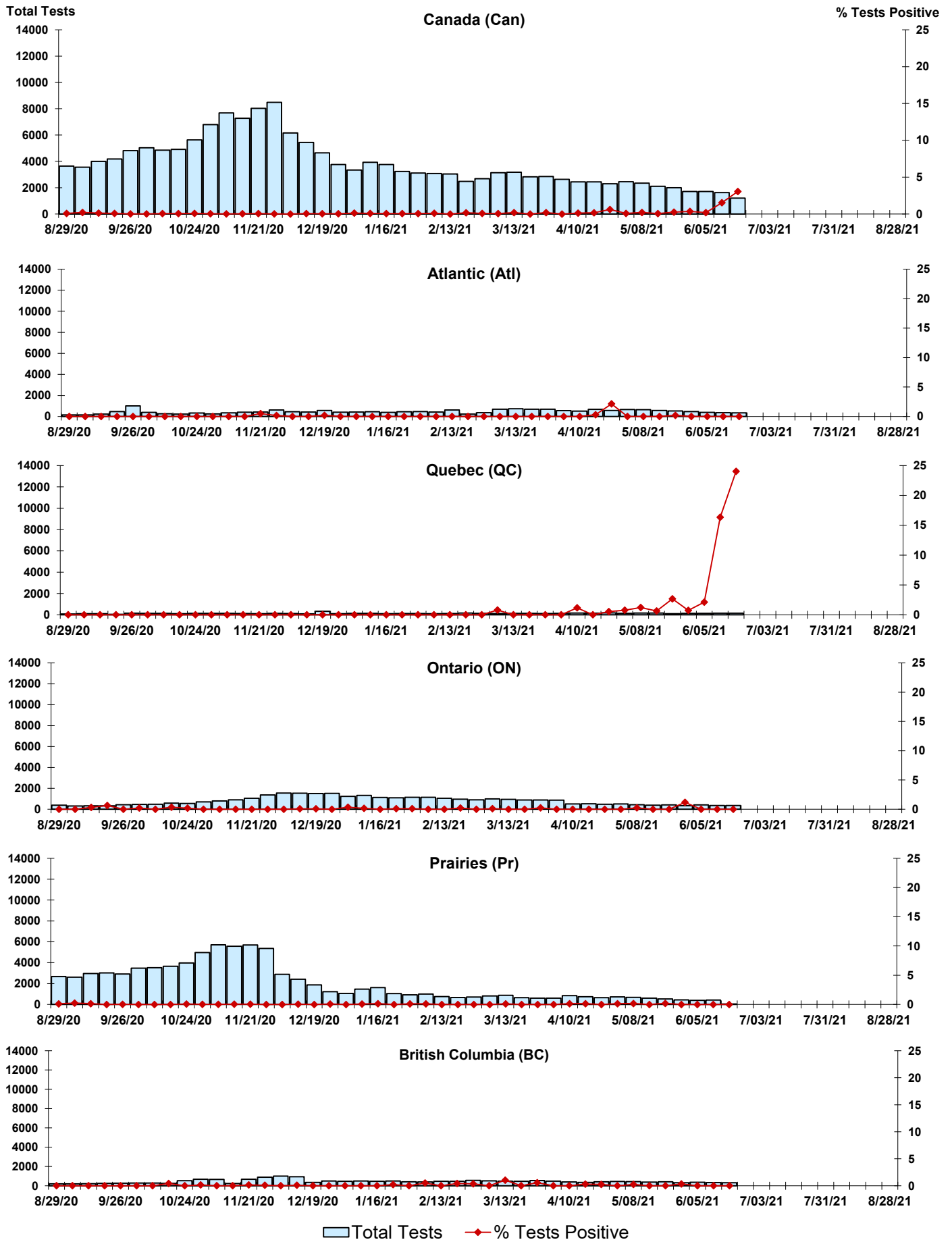


Figure 5: Positive Adenovirus (adeno) Tests (%) in Canada by Region by Week of Report

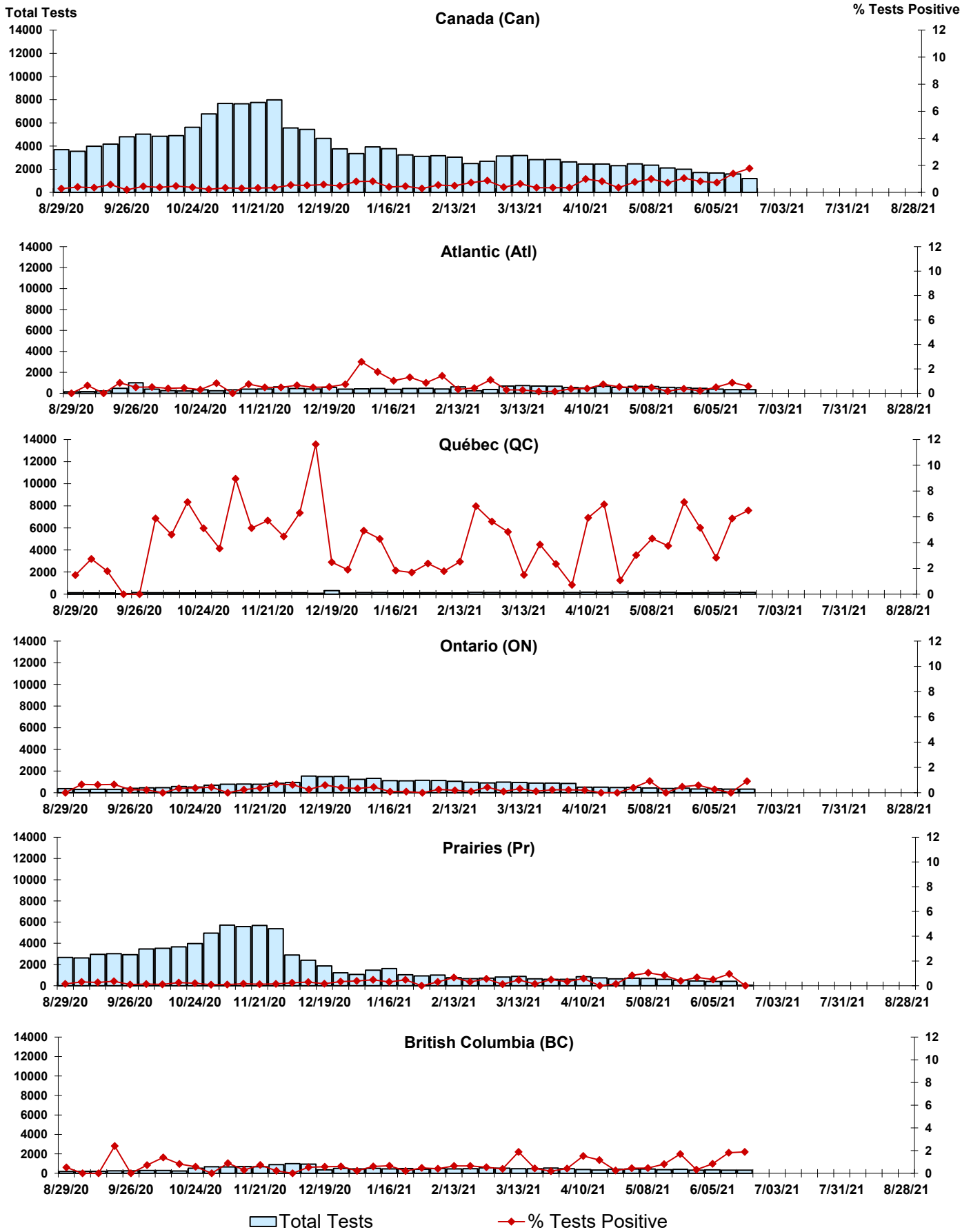


Figure 6: Positive human metapneumovirus (hMPV) Tests (%) in Canada by Region by Week of Report

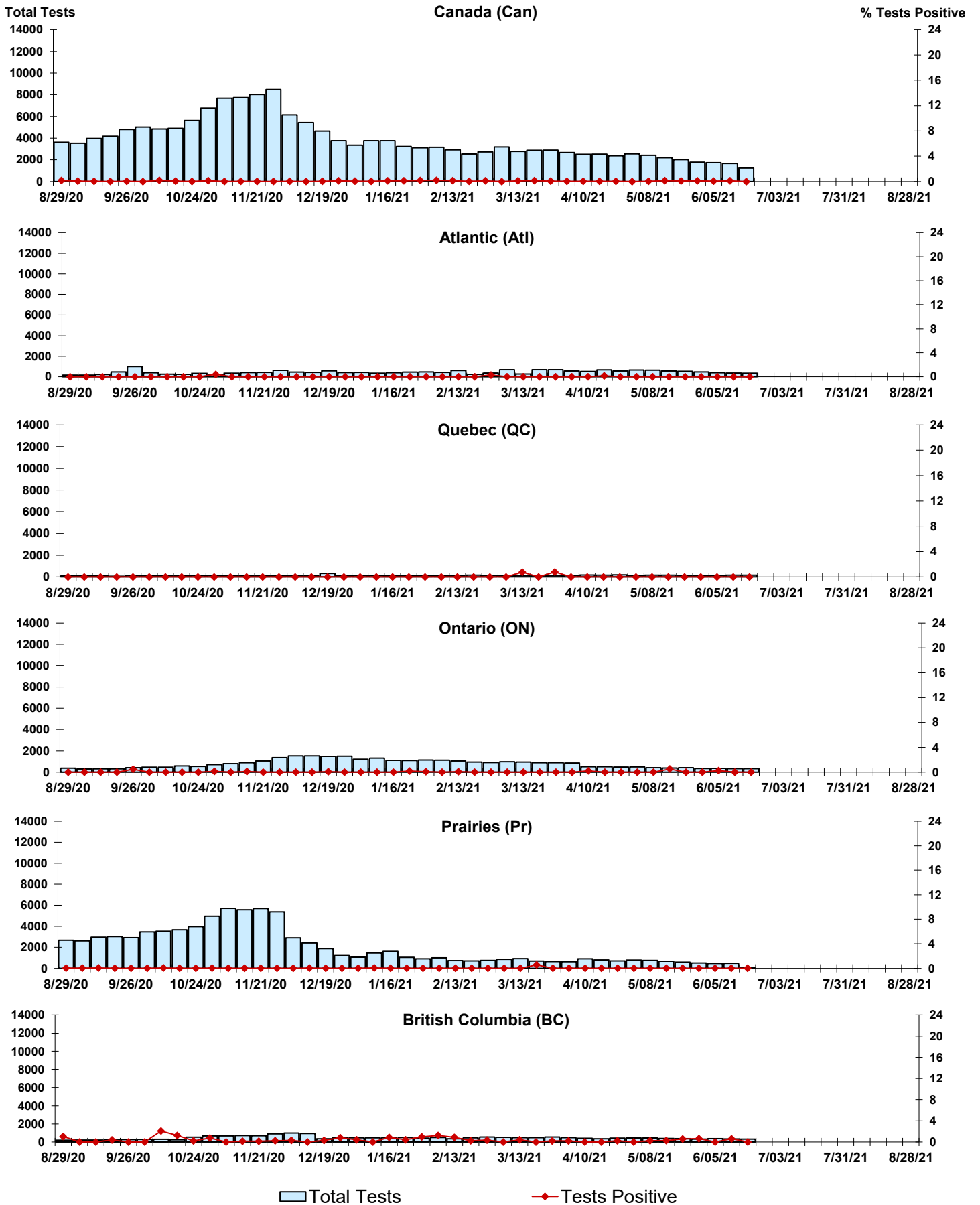


Figure 7: Positive Enterovirus/Rhinovirus (entero/rhino) Tests (%) in Canada by Region by Week of Report

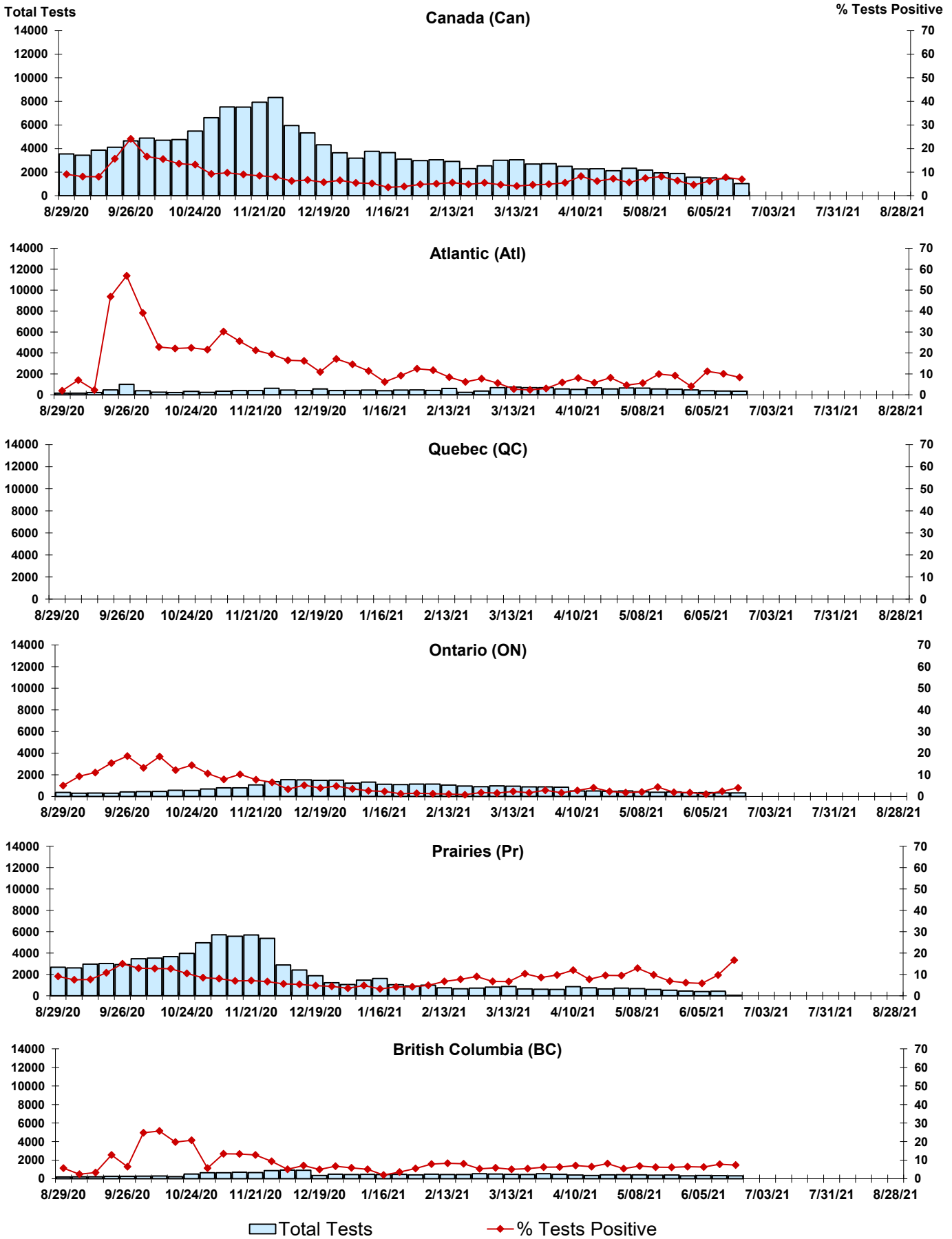
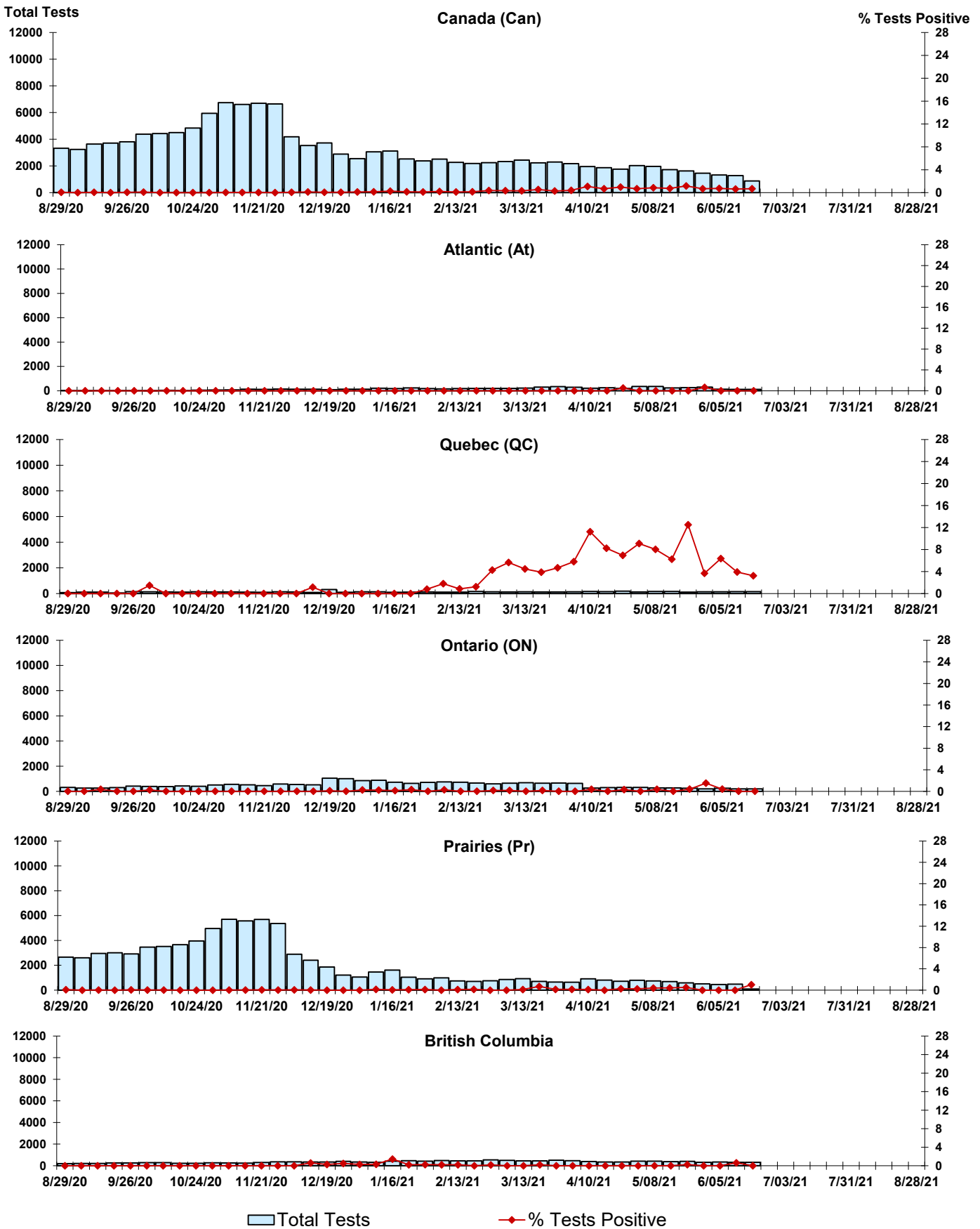


Figure 8: Positive Coronavirus (coron) Tests (%) in Canada by Region by Week of Report



Abbreviations:

A(H1N1)pdm09: Influenza A(H1N1)pdm09

A(H3): Influenza A(H3N2)

A (UnS): Influenza A (Unsubtyped)

Adeno: Adenovirus

CHEO: Children's Hospital of Eastern Ontario

Coron: Coronavirus

Entero: Enterovirus

hMPV: human metapneumovirus

HSC: Health Sciences Centre

N.A.: Not Applicable

P.H.L.: Public Health Laboratory

P.H.O.L.: Public Health Ontario Laboratory

PIV: Parainfluenza

Rhino: Rhinovirus

RSV: Respiratory syncytial virus

UHN: University Health Network

Notes:

The data in the RVDSS report represent surveillance data available at the time of writing. Missing data are denoted by N.A.

Specimens from Yukon (YT), Northwest Territories (NT) and Nunavut (NU) are sent to reference laboratories in other provinces. Results reported for the Territories reflect the number of specimens that are identified as originating from YT, NT or NU.

Delays in the reporting of data may cause data to change retrospectively.

Due to reporting delays, the sum of weekly report totals do not add up to cumulative totals.