

RESPIRATORY VIRUS DETECTION REPORT

June 19 to June 25, 2022
(Surveillance Week 2022-25)



In this Respiratory Virus Report, the number of detections of coronavirus reflects only seasonal human coronaviruses, not the novel pandemic coronavirus (SARS-CoV-2) that causes COVID-19. For information on COVID-19, see the [Coronavirus disease \(COVID-19\): Outbreak update](#).

Overall Summary

Detections of seasonal respiratory viruses excluding influenza have been stable since May.

- Influenza activity has continued to decrease, and is now below the epidemic threshold and near expected levels.
 - A total of 375 influenza detections were reported (365 influenza A, 10 influenza B).
- Enterovirus/Rhinovirus is now the most common seasonal respiratory virus detected in Canada (395 detections; 16.1% positive). Activity is increasing but below expected levels for this time of year.
- Activity of several other respiratory viruses is increasing, and is above or near expected levels.
- The number of tests performed for all viruses was above expected levels.
- 31/34 sentinel laboratories reported surveillance data.

Abbreviations

Flu: Influenza

Flu A(H1N1)pdm09: Influenza A(H1N1)pdm09

Flu A(H3): Influenza A(H3N2)

Flu A(UnS): Influenza A(Unsubtyped)

RSV: Respiratory syncytial virus

HPIV: Human parainfluenza virus

HMPV: Human metapneumovirus

ADV: Adenovirus

EV/RV: Enterovirus/Rhinovirus

HCoV: Human coronavirus

Atl: Atlantic Canada

BC: British Columbia

Can: Canada

EORLA: Eastern Ontario Regional Laboratory Association

HSC: Health Sciences Centre

N.C.: Data not collected

N.R.: Data not reported for current week

ON: Ontario

PR: Prairies

P.H.O.L.: Public Health Ontario Laboratory

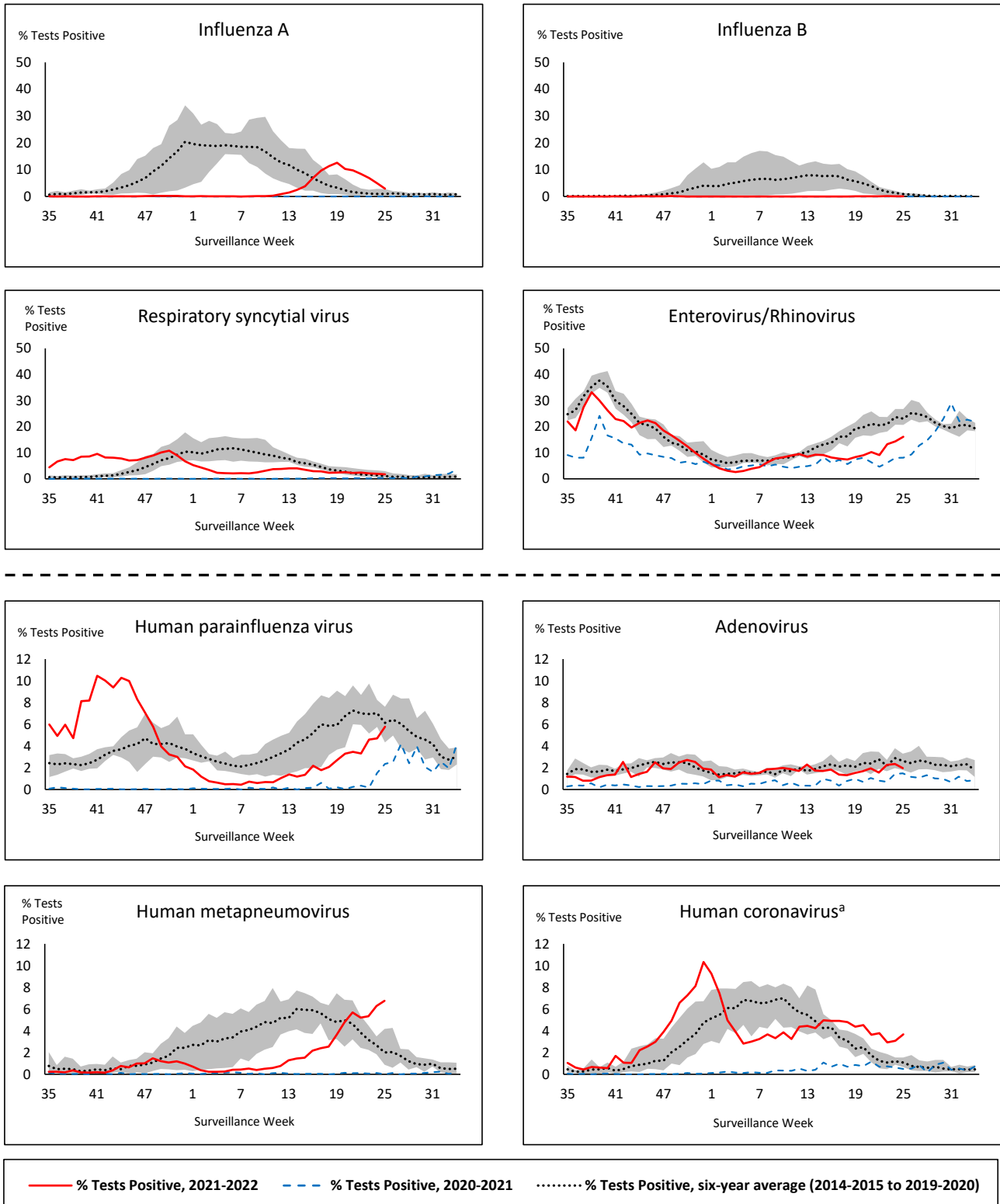
QC: Quebec

Terr: Territories of Canada

UHN: University Health Network



Figure 1: Positive respiratory virus tests (%) reported by participating laboratories in Canada by surveillance week compared to average and range from 2014-2015 to 2019-2020 season



Shaded area represents the maximum and minimum % of respiratory virus tests positive reported by week from seasons 2014-2015 to 2019-2020

Note: Data from week 11 of the 2019-2020 season onwards are excluded from the historical comparison due to the COVID-19 pandemic

Note: % Tests Positive scale changes across the dashed line

^a Human coronavirus excludes human coronaviruses SARS-CoV, MERS-CoV and SARS-CoV-2; Includes seasonal human coronaviruses HCoV-229E, HCoV-OC43, HCoV-NL63, HCoV-HKU1.

Table 1: Respiratory virus detections for the week ending June 25, 2022 (surveillance week 2022-25)

| Reporting Laboratory | Flu Tested | A(H1)pdm09 Positive | A(H3) Positive | A(UnS) Positive | Total Flu A Positive | Total Flu B Positive | RSV Tested | RSV Positive | HPIV Tested | HPIV 1 Positive | HPIV 2 Positive | HPIV 3 Positive | HPIV 4 Positive | Other HPIV Positive | ADV Tested | ADV Positive | HMPV Tested | HMPV Positive | EV/RV Tested | EV/RV Positive | HCoV Tested | HCoV Positive |
|----------------------------------|--------------|---------------------|----------------|-----------------|----------------------|----------------------|--------------|--------------|-------------|-----------------|-----------------|-----------------|-----------------|---------------------|-------------|--------------|-------------|---------------|--------------|----------------|-------------|---------------|
| Newfoundland | 177 | 0 | 0 | 3 | 3 | 0 | 177 | 11 | 177 | 0 | 3 | 0 | 0 | 0 | 177 | 0 | 177 | 3 | 177 | 8 | 170 | 9 |
| Prince Edward Island | 29 | 0 | 0 | 0 | 0 | 0 | 29 | 0 | 29 | 0 | 0 | 0 | 4 | 0 | 29 | 1 | 29 | 2 | 29 | 10 | 29 | 0 |
| Nova Scotia | 577 | 0 | 0 | 39 | 39 | 0 | 577 | 7 | 28 | 0 | 0 | 0 | 1 | 0 | 28 | 2 | 28 | 6 | 28 | 3 | 28 | 2 |
| New Brunswick | 416 | 0 | 31 | 2 | 33 | 0 | 281 | 9 | 50 | 0 | 3 | 1 | 0 | 0 | 50 | 0 | 50 | 4 | 50 | 5 | 50 | 2 |
| Atlantic | 1199 | 0 | 31 | 44 | 75 | 0 | 1064 | 27 | 284 | 0 | 6 | 1 | 5 | 0 | 284 | 3 | 284 | 15 | 284 | 26 | 277 | 13 |
| Région Nord-Est | 1229 | 1 | 0 | 10 | 11 | 4 | 450 | 16 | 1 | 0 | 0 | 0 | 0 | 0 | 1 | 0 | 1 | 1 | N.C. | N.C. | 1 | 0 |
| Québec-Chaudière-Appalaches | 739 | 0 | 0 | 24 | 24 | 5 | 739 | 2 | 21 | 0 | 0 | 1 | 1 | 0 | 268 | 9 | 266 | 0 | N.C. | N.C. | 130 | 3 |
| Centre-du-Québec | 557 | 0 | 0 | 22 | 22 | 1 | 441 | 1 | 22 | 1 | 0 | 1 | 0 | 0 | 22 | 2 | 22 | 1 | N.C. | N.C. | 22 | 3 |
| Montréal-Laval | 1559 | 0 | 0 | 24 | 24 | 0 | 983 | 2 | 333 | 7 | 10 | 10 | 0 | 0 | 333 | 10 | 333 | 6 | N.C. | N.C. | 360 | 12 |
| Ouest du Québec | 309 | 0 | 0 | 29 | 29 | 0 | 309 | 2 | 19 | 1 | 0 | 1 | 1 | 0 | 19 | 1 | 19 | 2 | N.C. | N.C. | 19 | 0 |
| Montréal | 286 | 0 | 0 | 20 | 20 | 0 | 59 | 0 | 0 | 0 | 0 | 0 | 0 | 0 | 0 | 0 | 0 | 0 | N.C. | N.C. | 0 | 0 |
| Province of Québec | 4679 | 1 | 0 | 129 | 130 | 10 | 2981 | 23 | 396 | 9 | 10 | 13 | 2 | 0 | 643 | 22 | 641 | 10 | N.C. | N.C. | 532 | 18 |
| P.H.O.L. - Ottawa | 30 | 0 | 0 | 0 | 0 | 0 | 30 | 0 | 30 | 0 | 0 | 0 | 0 | 0 | 30 | 1 | 30 | 1 | 30 | 2 | 30 | 0 |
| EORLA | 267 | 0 | 0 | 6 | 6 | 0 | 267 | 3 | 40 | 0 | 0 | 1 | 1 | 0 | 40 | 0 | 40 | 5 | 40 | 9 | 40 | 1 |
| P.H.O.L. - Kingston | 29 | 0 | 0 | 0 | 0 | 0 | 29 | 3 | 29 | 0 | 0 | 0 | 0 | 2 | 29 | 0 | 29 | 6 | 29 | 10 | 29 | 2 |
| UHN / Mount Sinai Hospital | 428 | 0 | 0 | 2 | 2 | 0 | 428 | 2 | 17 | 0 | 0 | 0 | 0 | 0 | 17 | 0 | 17 | 1 | 17 | 0 | 17 | 1 |
| P.H.O.L. - Toronto | 253 | 0 | 9 | 1 | 3 | 0 | 252 | 0 | 252 | 0 | 0 | 0 | 0 | 10 | 252 | 7 | 251 | 21 | 252 | 32 | 251 | 31 |
| Sick Kids Hospital - Toronto | N.R. | N.R. | N.R. | N.R. | N.R. | N.R. | N.R. | N.R. | N.R. | N.R. | N.R. | N.R. | N.R. | N.R. | N.R. | N.R. | N.R. | N.R. | N.R. | N.R. | N.R. | N.R. |
| Sunnybrook & Women's College HSC | N.R. | N.R. | N.R. | N.R. | N.R. | N.R. | N.R. | N.R. | N.R. | N.R. | N.R. | N.R. | N.R. | N.R. | N.R. | N.R. | N.R. | N.R. | N.R. | N.R. | N.R. | N.R. |
| P.H.O.L. - Sault Ste. Marie | 10 | 0 | 0 | 0 | 0 | 0 | 10 | 0 | 10 | 0 | 0 | 0 | 0 | 2 | 10 | 0 | 10 | 0 | 10 | 3 | 10 | 0 |
| P.H.O.L. - Timmins | 6 | 0 | 0 | 0 | 0 | 0 | 6 | 1 | 6 | 0 | 0 | 0 | 0 | 1 | 6 | 0 | 6 | 1 | 6 | 0 | 6 | 2 |
| St. Joseph's - London | 56 | 0 | 0 | 2 | 2 | 0 | 56 | 3 | 56 | 0 | 0 | 0 | 0 | 3 | 56 | 0 | 56 | 9 | 56 | 9 | 1 | 0 |
| P.H.O.L. - London | 84 | 0 | 2 | 0 | 2 | 0 | 84 | 1 | 84 | 0 | 0 | 0 | 0 | 2 | 84 | 0 | 84 | 6 | 84 | 9 | 84 | 15 |
| P.H.O.L. - Orillia | 31 | 0 | 1 | 0 | 1 | 0 | 31 | 5 | 31 | 0 | 0 | 0 | 0 | 2 | 31 | 3 | 31 | 11 | 31 | 9 | 31 | 1 |
| P.H.O.L. - Thunder Bay | 6 | 0 | 1 | 0 | 0 | 0 | 6 | 1 | 6 | 0 | 0 | 0 | 0 | 1 | 6 | 0 | 6 | 1 | 6 | 1 | 6 | 0 |
| P.H.O.L. - Sudbury | 6 | 0 | 0 | 0 | 0 | 0 | 6 | 0 | 6 | 0 | 0 | 0 | 0 | 2 | 6 | 0 | 6 | 0 | 6 | 0 | 6 | 1 |
| P.H.O.L. - Hamilton | 47 | 0 | 0 | 0 | 0 | 0 | 47 | 0 | 47 | 0 | 0 | 0 | 0 | 4 | 47 | 0 | 47 | 5 | 47 | 8 | 47 | 0 |
| P.H.O.L. - Peterborough | 8 | 0 | 0 | 0 | 0 | 0 | 8 | 0 | 8 | 0 | 0 | 0 | 0 | 1 | 8 | 0 | 8 | 0 | 8 | 5 | 8 | 0 |
| St. Joseph's - Hamilton | N.R. | N.R. | N.R. | N.R. | N.R. | N.R. | N.R. | N.R. | N.R. | N.R. | N.R. | N.R. | N.R. | N.R. | N.R. | N.R. | N.R. | N.R. | N.R. | N.R. | N.R. | N.R. |
| Province of Ontario | 1261 | 0 | 13 | 11 | 16 | 0 | 1260 | 19 | 622 | 0 | 0 | 1 | 1 | 30 | 622 | 11 | 621 | 67 | 622 | 97 | 566 | 54 |
| Province of Manitoba | 312 | 0 | 2 | 1 | 3 | 0 | 312 | 10 | 124 | 0 | 0 | 0 | 2 | 0 | 124 | 0 | 125 | 3 | 124 | 18 | 125 | 3 |
| Province of Saskatchewan | 358 | 0 | 0 | 9 | 9 | 0 | 358 | 7 | 169 | 0 | 1 | 1 | 10 | 0 | 169 | 5 | 169 | 20 | 169 | 44 | 169 | 4 |
| Province of Alberta | 1849 | 0 | 55 | 8 | 63 | 0 | 1570 | 26 | 707 | 0 | 15 | 29 | 11 | 0 | 707 | 11 | 705 | 32 | 695 | 112 | 707 | 5 |
| Prairies | 2519 | 0 | 57 | 18 | 75 | 0 | 2240 | 43 | 1000 | 0 | 16 | 30 | 23 | 0 | 1000 | 16 | 999 | 55 | 988 | 174 | 1001 | 12 |
| British Columbia | 2771 | 0 | 21 | 0 | 61 | 0 | 2694 | 34 | 514 | 1 | 2 | 1 | 8 | 4 | 514 | 8 | 514 | 60 | 504 | 92 | 504 | 9 |
| Yukon | 2 | 0 | 0 | 0 | 0 | 0 | 2 | 0 | N.C. | N.C. | N.C. | N.C. | N.C. | N.C. | N.C. | N.C. | N.C. | N.C. | N.C. | N.C. | N.C. | N.C. |
| Northwest Territories | 52 | 0 | 2 | 0 | 2 | 0 | 52 | 14 | 3 | 0 | 0 | 0 | 0 | 0 | 3 | 0 | 3 | 0 | 51 | 6 | 3 | 0 |
| Nunavut | 87 | 0 | 6 | 0 | 6 | 0 | 87 | 19 | N.C. | N.C. | N.C. | N.C. | N.C. | N.C. | N.C. | N.C. | N.C. | N.C. | N.C. | N.C. | N.C. | N.C. |
| Territories | 141 | 0 | 8 | 0 | 8 | 0 | 141 | 33 | 3 | 0 | 0 | 0 | 0 | 0 | 3 | 0 | 3 | 0 | 51 | 6 | 3 | 0 |
| CANADA | 12570 | 1 | 130 | 202 | 365 | 10 | 10380 | 179 | 2819 | 10 | 34 | 46 | 39 | 34 | 3066 | 60 | 3062 | 207 | 2449 | 395 | 2883 | 106 |

The data in the RVDSS report represent surveillance data available at the time of writing. Data missing from the current week are denoted by N.R. Data not collected by reporting lab denoted by N.C.

The reporting laboratory previously listed as CHEO - Ottawa is now listed as EORLA to better reflect data submitted by this provider.

Specimens from Yukon (YT) are sent to reference laboratories in British Columbia and reported results reflect specimens identified as originating from YT.

Results from British Columbia comprise of specimens from the following sites: BC Children's and Women's Hospital, Children's and Women's Hospital Laboratory, Fraser Health Medical Microbiology Laboratory, Island Health, Providence Health Care, Powell River Hospital, St. Paul's Hospital, Vancouver General Hospital, Victoria General Hospital, BCCDC Public Health Laboratory, Interior Health Authority sites and Northern Health Authority sites.

Delays in the reporting of data may cause data to change retrospectively.

For British Columbia, only data from subtyped influenza A specimens are included in the weekly number of influenza A detections. The sum of A(H1N1)pdm09, A(H3), and A(UnS) positive results may not equal the sum of total Flu A positive results.

Due to different testing protocols of laboratories across Canada, influenza A subtype detection counts may not be included in total influenza A detection counts, as some subtype detections are not available through routine testing but are subsequently reported if further subtype testing is conducted. In these instances, subtype counts do not reflect influenza A detections intended to be captured by routine surveillance, and are excluded from total detections and percent positivity.

Table 2: Cumulative respiratory virus detections from August 29, 2021 to June 25, 2022 (surveillance week 2021-35 to 2022-25)

| Reporting Laboratory | Flu Tested | A(H1)pdm09 Positive | A(H3) Positive | A(UnS) Positive | Total Flu A Positive | Total Flu B Positive | RSV Tested | RSV Positive | HPIV Tested | HPIV 1 Positive | HPIV 2 Positive | HPIV 3 Positive | HPIV 4 Positive | Other HPIV Positive | ADV Tested | ADV Positive | HMPV Tested | HMPV Positive | EV/RV Tested | EV/RV Positive | HCoV Tested | HCoV Positive |
|----------------------------------|---------------|---------------------|----------------|-----------------|----------------------|----------------------|---------------|--------------|---------------|-----------------|-----------------|-----------------|-----------------|---------------------|---------------|--------------|---------------|---------------|---------------|----------------|---------------|---------------|
| Newfoundland | 14388 | 0 | 0 | 315 | 315 | 0 | 14386 | 198 | 14389 | 1 | 24 | 116 | 0 | 314 | 14396 | 46 | 14383 | 76 | 14450 | 2117 | 170 | 9 |
| Prince Edward Island | 2545 | 0 | 45 | 17 | 62 | 0 | 2545 | 259 | 2500 | 0 | 0 | 158 | 22 | 1 | 2545 | 66 | 2545 | 94 | 2545 | 590 | 2545 | 138 |
| Nova Scotia | 22973 | 0 | 2 | 367 | 369 | 8 | 22978 | 358 | 1756 | 0 | 3 | 41 | 29 | 0 | 1776 | 20 | 1776 | 42 | 1776 | 155 | 1776 | 48 |
| New Brunswick | 18424 | 0 | 101 | 343 | 444 | 0 | 11751 | 329 | 3305 | 0 | 4 | 28 | 26 | 0 | 3298 | 33 | 3305 | 37 | 3305 | 105 | 3214 | 18 |
| Atlantic | 58330 | 0 | 148 | 1042 | 1190 | 8 | 51660 | 1144 | 21950 | 1 | 31 | 343 | 77 | 315 | 22015 | 165 | 22009 | 249 | 22076 | 2967 | 7705 | 213 |
| Région Nord-Est | 31939 | 45 | 1 | 2178 | 2224 | 20 | 14829 | 1461 | 814 | 2 | 0 | 10 | 1 | 0 | 905 | 18 | 418 | 14 | N.C. | N.C. | 1249 | 24 |
| Québec-Chaudière-Appalaches | 11664 | 0 | 0 | 1414 | 1414 | 48 | 12734 | 1008 | 1740 | 1 | 15 | 10 | 17 | 0 | 4227 | 129 | 4128 | 129 | N.C. | N.C. | 2594 | 108 |
| Centre-du-Québec | 12597 | 0 | 3 | 1253 | 1256 | 11 | 11383 | 1091 | 1381 | 3 | 8 | 27 | 3 | 0 | 1381 | 41 | 1389 | 25 | N.C. | N.C. | 1374 | 30 |
| Montréal-Laval | 32312 | 0 | 5 | 1506 | 1511 | 8 | 28362 | 2469 | 9063 | 21 | 80 | 62 | 8 | 0 | 9062 | 523 | 9060 | 381 | N.C. | N.C. | 9245 | 233 |
| Ouest du Québec | 7973 | 0 | 6 | 637 | 643 | 0 | 7915 | 940 | 255 | 1 | 8 | 6 | 6 | 0 | 248 | 21 | 244 | 13 | N.C. | N.C. | 244 | 5 |
| Montérégie | 5227 | 0 | 0 | 300 | 300 | 0 | 4436 | 389 | 0 | 0 | 0 | 0 | 0 | 0 | 0 | 0 | 0 | 0 | N.C. | N.C. | 0 | 0 |
| Province of Québec | 101712 | 45 | 15 | 7288 | 7348 | 87 | 79659 | 7358 | 13253 | 28 | 111 | 115 | 35 | 0 | 15823 | 732 | 15239 | 562 | N.C. | N.C. | 14706 | 400 |
| P.H.O.L. - Ottawa | 7040 | 2 | 81 | 1 | 84 | 0 | 7040 | 1442 | 7040 | 0 | 0 | 0 | 0 | 740 | 7040 | 313 | 7038 | 46 | 7040 | 2252 | 7038 | 291 |
| EORLA | 7974 | 0 | 0 | 168 | 168 | 0 | 7949 | 649 | 1186 | 0 | 2 | 21 | 9 | 0 | 1186 | 21 | 867 | 24 | 1186 | 185 | 844 | 30 |
| P.H.O.L. - Kingston | 1529 | 0 | 219 | 0 | 8 | 0 | 1536 | 135 | 1535 | 0 | 0 | 0 | 0 | 135 | 1536 | 26 | 1517 | 20 | 1535 | 350 | 1517 | 99 |
| UHN / Mount Sinai Hospital | 20158 | 0 | 0 | 55 | 55 | 4 | 20159 | 114 | 668 | 0 | 0 | 0 | 0 | 0 | 668 | 1 | 668 | 2 | 668 | 17 | 668 | 12 |
| P.H.O.L. - Toronto | 10824 | 2 | 367 | 2 | 121 | 0 | 10811 | 291 | 10811 | 0 | 0 | 0 | 0 | 392 | 10817 | 155 | 10801 | 150 | 10811 | 1207 | 10802 | 465 |
| Sick Kids Hospital - Toronto | 839 | 0 | 0 | 0 | 0 | 0 | 0 | 0 | 839 | 0 | 2 | 68 | 1 | 0 | 839 | 12 | 839 | 1 | 839 | 233 | 839 | 10 |
| Sunnybrook & Women's College HSC | 0 | 0 | 0 | 0 | 0 | 0 | 0 | 0 | 0 | 0 | 0 | 0 | 0 | 0 | 0 | 0 | 0 | 0 | 0 | 0 | 0 | 0 |
| P.H.O.L. - Sault Ste. Marie | 351 | 0 | 4 | 1 | 4 | 0 | 350 | 9 | 350 | 0 | 0 | 0 | 0 | 9 | 350 | 3 | 350 | 2 | 350 | 54 | 350 | 23 |
| P.H.O.L. - Timmins | 500 | 0 | 16 | 0 | 9 | 0 | 500 | 28 | 500 | 0 | 0 | 0 | 0 | 19 | 500 | 1 | 499 | 2 | 500 | 40 | 499 | 32 |
| St. Joseph's - London | 13004 | 0 | 0 | 70 | 70 | 0 | 13007 | 782 | 11450 | 0 | 0 | 7 | 0 | 95 | 11450 | 152 | 11450 | 90 | 11404 | 634 | 544 | 4 |
| P.H.O.L. - London | 3936 | 0 | 54 | 10 | 56 | 0 | 3935 | 466 | 3935 | 0 | 0 | 0 | 0 | 184 | 3935 | 92 | 3932 | 83 | 3935 | 511 | 3932 | 296 |
| P.H.O.L. - Orillia | 1023 | 0 | 8 | 1 | 9 | 0 | 1023 | 141 | 1023 | 0 | 0 | 0 | 0 | 67 | 1023 | 35 | 1020 | 51 | 1023 | 255 | 1020 | 77 |
| P.H.O.L. - Thunder Bay | 355 | 0 | 5 | 0 | 4 | 0 | 355 | 27 | 355 | 0 | 0 | 0 | 0 | 25 | 355 | 1 | 355 | 12 | 355 | 62 | 355 | 37 |
| P.H.O.L. - Sudbury | 370 | 0 | 6 | 0 | 6 | 0 | 370 | 12 | 370 | 0 | 0 | 0 | 0 | 11 | 370 | 2 | 370 | 7 | 370 | 34 | 370 | 12 |
| P.H.O.L. - Hamilton | 2024 | 0 | 24 | 2 | 22 | 0 | 2019 | 78 | 2019 | 0 | 0 | 0 | 0 | 68 | 2020 | 20 | 2019 | 48 | 2019 | 267 | 2019 | 113 |
| P.H.O.L. - Peterborough | 674 | 0 | 1 | 0 | 1 | 0 | 674 | 49 | 667 | 0 | 0 | 0 | 0 | 14 | 667 | 6 | 664 | 3 | 667 | 111 | 664 | 45 |
| St. Joseph's - Hamilton | 24329 | 0 | 4 | 237 | 241 | 1 | 24323 | 1651 | 24323 | 5 | 0 | 663 | 0 | 0 | 24323 | 234 | 24323 | 263 | 24323 | 2098 | 0 | 0 |
| Province of Ontario | 94930 | 4 | 789 | 547 | 858 | 5 | 94051 | 5874 | 67071 | 5 | 4 | 759 | 10 | 1759 | 67079 | 1074 | 66712 | 804 | 67025 | 8310 | 31461 | 1546 |
| Manitoba | 56957 | 1 | 84 | 487 | 572 | 0 | 56957 | 1392 | 3403 | 2 | 13 | 77 | 21 | 0 | 3403 | 55 | 4811 | 39 | 3403 | 419 | 4617 | 94 |
| Province of Saskatchewan | 29582 | 2 | 467 | 295 | 764 | 0 | 29547 | 1742 | 5911 | 1 | 18 | 210 | 91 | 0 | 5911 | 114 | 5911 | 99 | 5911 | 877 | 5900 | 312 |
| Province of Alberta | 87468 | 7 | 1712 | 833 | 2552 | 3 | 67439 | 3614 | 35998 | 6 | 142 | 799 | 249 | 0 | 35991 | 386 | 35977 | 567 | 35659 | 4043 | 35998 | 1538 |
| Prairies | 174007 | 10 | 2263 | 1615 | 3888 | 3 | 153943 | 6748 | 45312 | 9 | 173 | 1086 | 361 | 0 | 45305 | 555 | 46699 | 705 | 44973 | 5339 | 46515 | 1944 |
| British Columbia | 201990 | 7 | 836 | 6 | 1275 | 88 | 197295 | 9358 | 27057 | 11 | 23 | 1101 | 310 | 184 | 27057 | 534 | 27053 | 477 | 26529 | 4059 | 26547 | 969 |
| Yukon | 5462 | 1 | 5 | 2 | 14 | 7 | 5471 | 308 | N.C. | N.C. | N.C. | N.C. | N.C. | N.C. | N.C. | N.C. | N.C. | N.C. | N.C. | N.C. | N.C. | N.C. |
| Northwest Territories | 1902 | 0 | 204 | 1 | 205 | 0 | 1890 | 189 | 125 | 0 | 1 | 2 | 0 | 0 | 125 | 3 | 125 | 0 | 1822 | 198 | 125 | 1 |
| Nunavut | 16360 | 0 | 395 | 7 | 402 | 0 | 16358 | 395 | N.C. | N.C. | N.C. | N.C. | N.C. | N.C. | N.C. | N.C. | N.C. | N.C. | N.C. | N.C. | N.C. | N.C. |
| Territories | 23724 | 1 | 604 | 10 | 621 | 7 | 23719 | 892 | 176 | 0 | 1 | 6 | 0 | 0 | 176 | 6 | 176 | 0 | 1873 | 211 | 159 | 1 |
| CANADA | 654693 | 67 | 4655 | 10508 | 15180 | 198 | 600327 | 31374 | 174819 | 54 | 343 | 3410 | 793 | 2258 | 177455 | 3066 | 177888 | 2797 | 162476 | 20886 | 127093 | 5073 |

The data in the RVDSS report represent surveillance data available at the time of writing. Data not collected by reporting lab denoted by N.C.

Note: Included in the cumulative detections this season are 11 co-infections of influenza A and B (total of 22 detections) that are suspected to be associated with recent live attenuated influenza vaccine (LAIV) receipt. Co-infections known or reported to be associated with recent LAIV are removed by the submitting laboratory or by PHAC beginning in week 44 as they do not represent community transmission of seasonal influenza viruses.

The reporting laboratory previously listed as CHEO - Ottawa is now listed as EORLA to better reflect data submitted by this provider.

Specimens from Yukon (YT) are sent to reference laboratories in British Columbia and reported results reflect specimens identified as originating from YT.

Results from British Columbia comprise of specimens from the following sites: BC Children's and Women's Hospital, Children's and Women's Hospital Laboratory, Fraser Health Medical Microbiology Laboratory, Island Health, Providence Health Care, Powell River Hospital, St. Paul's Hospital, Vancouver General Hospital, Victoria General Hospital, BCCDC Public Health Laboratory, Interior Health Authority sites and Northern Health Authority sites.

Delays in the reporting of data may cause data to change retrospectively. Due to these delays, the sum of weekly report totals do not add up to cumulative totals.

For British Columbia, only data from subtyped influenza A specimens are included in the weekly number of influenza A detections. The sum of A(H1N1)pdm09, A(H3), and A(UnS) positive results may not equal the sum of total Flu A positive results.

Due to different testing protocols of laboratories across Canada, influenza A subtype detection counts may not be included in total influenza A detection counts, as some subtype detections are not available through routine testing but are subsequently reported if further subtype testing is conducted. In these instances, subtype counts do not reflect influenza A detections intended to be captured by routine surveillance, and are excluded from total detections and percent positivity.

Figure 2: Number of positive respiratory virus tests reported by participating laboratories in Canada by surveillance week

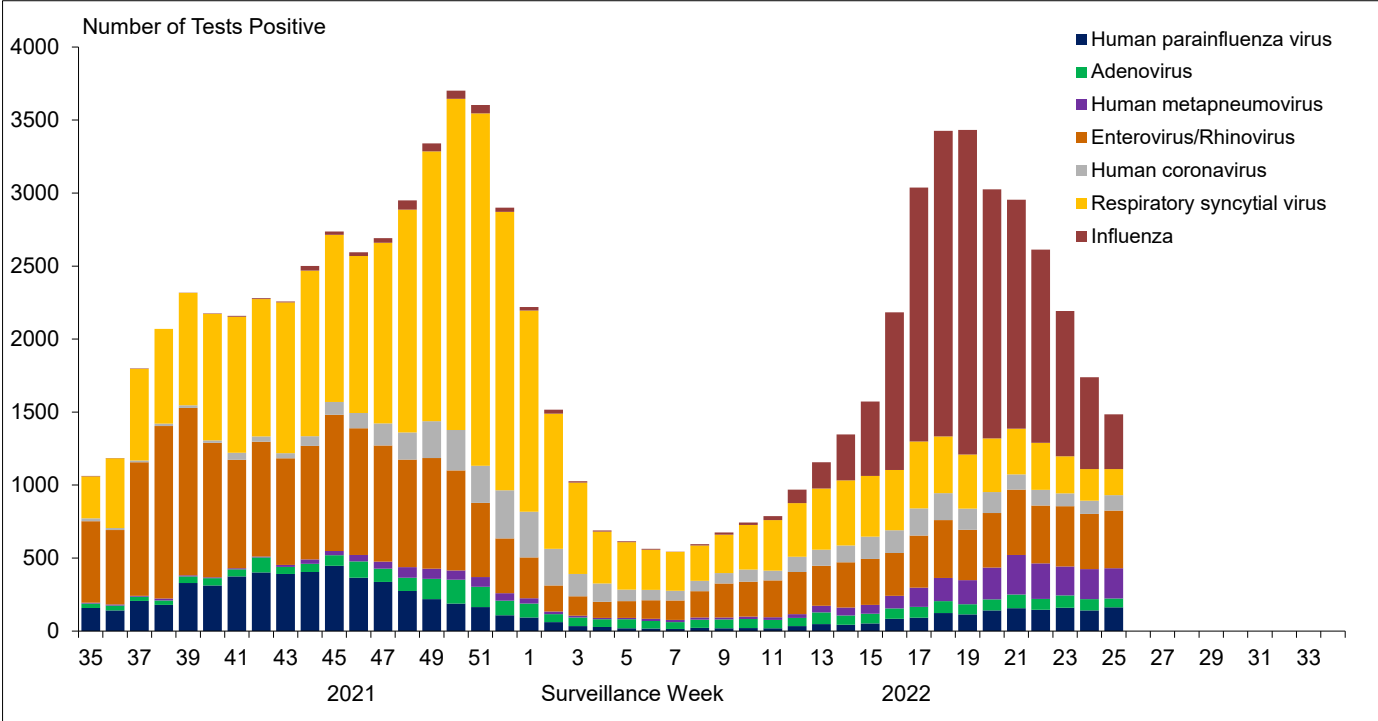


Figure 3: Positive Influenza (Flu) tests (%) in Canada by region by surveillance week

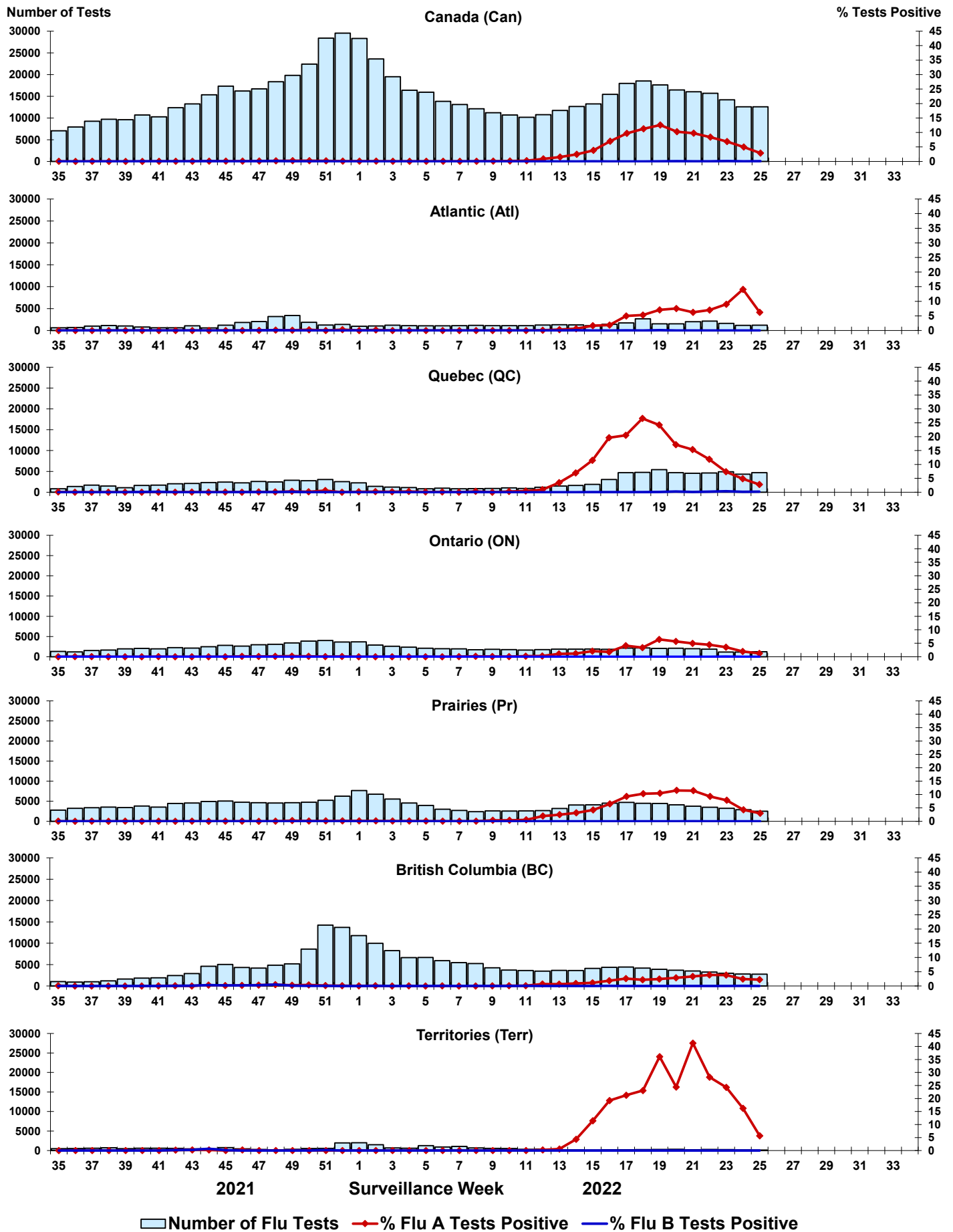


Figure 4: Positive Respiratory syncytial virus (RSV) tests (%) in Canada by region by surveillance week

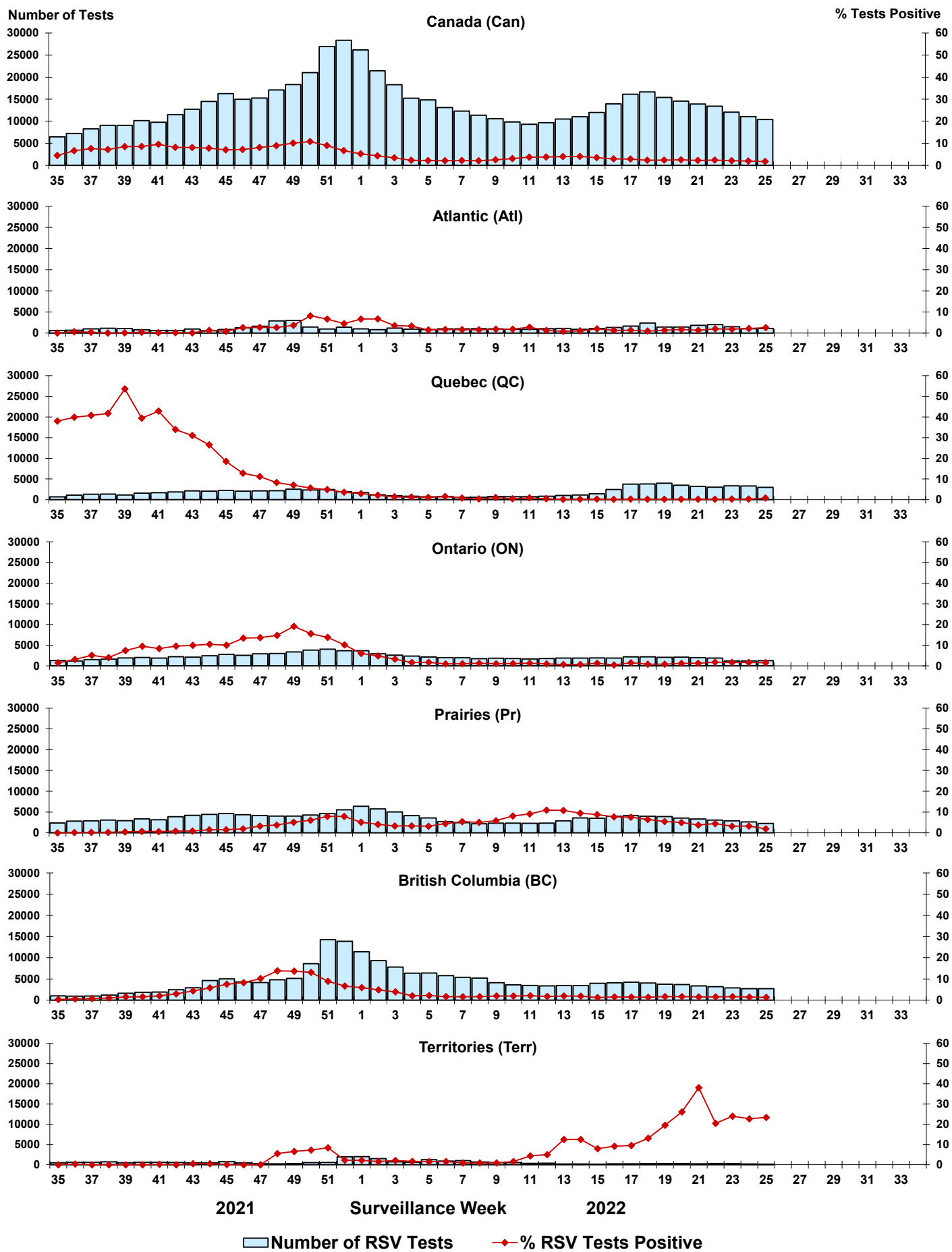


Figure 5: Positive Human parainfluenza virus (HPIV) tests (%) in Canada by region by surveillance week

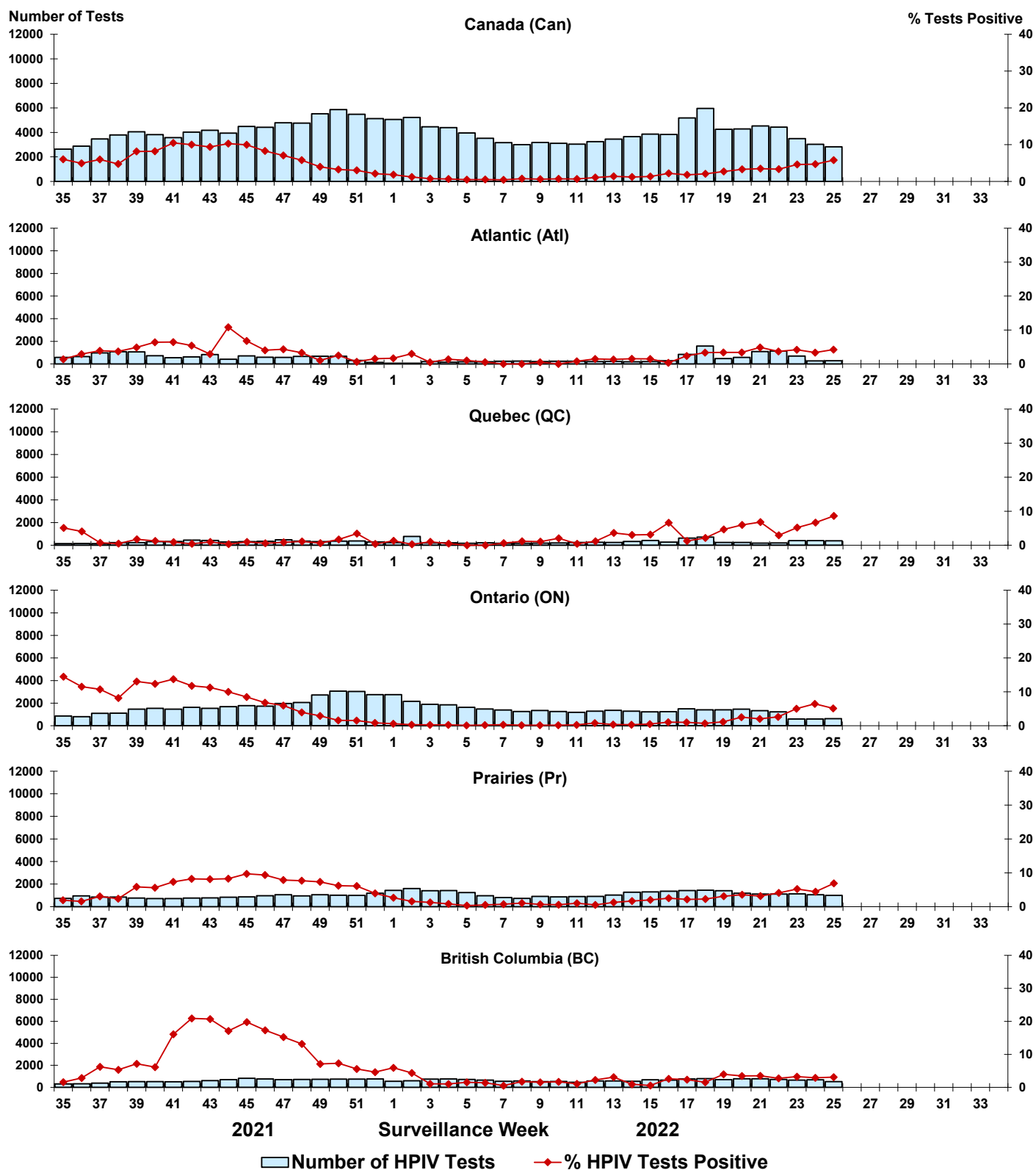


Figure 6: Positive Adenovirus (ADV) tests (%) in Canada by region by surveillance week

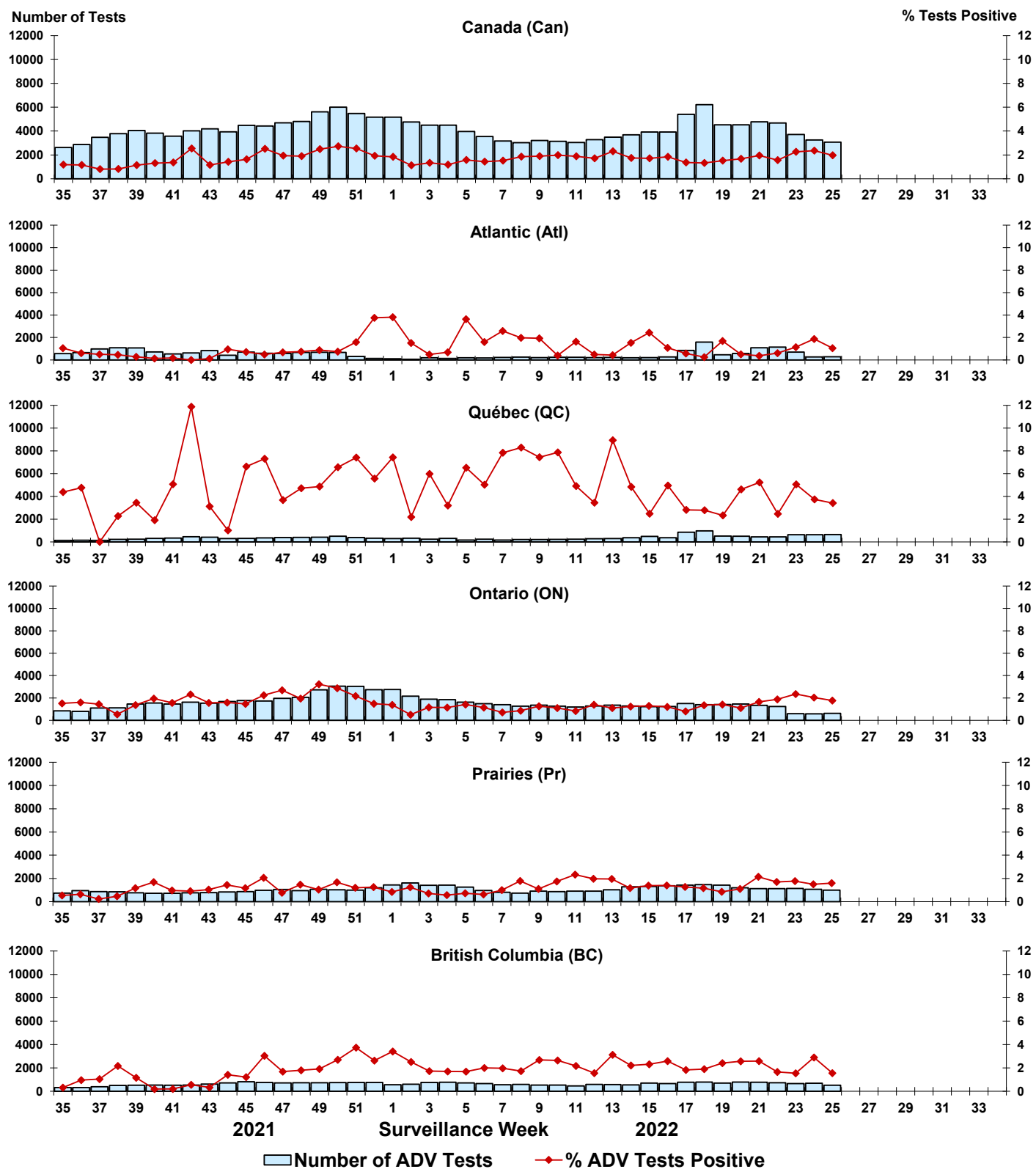


Figure 7: Positive Human metapneumovirus (HMPV) tests (%) in Canada by region by surveillance week

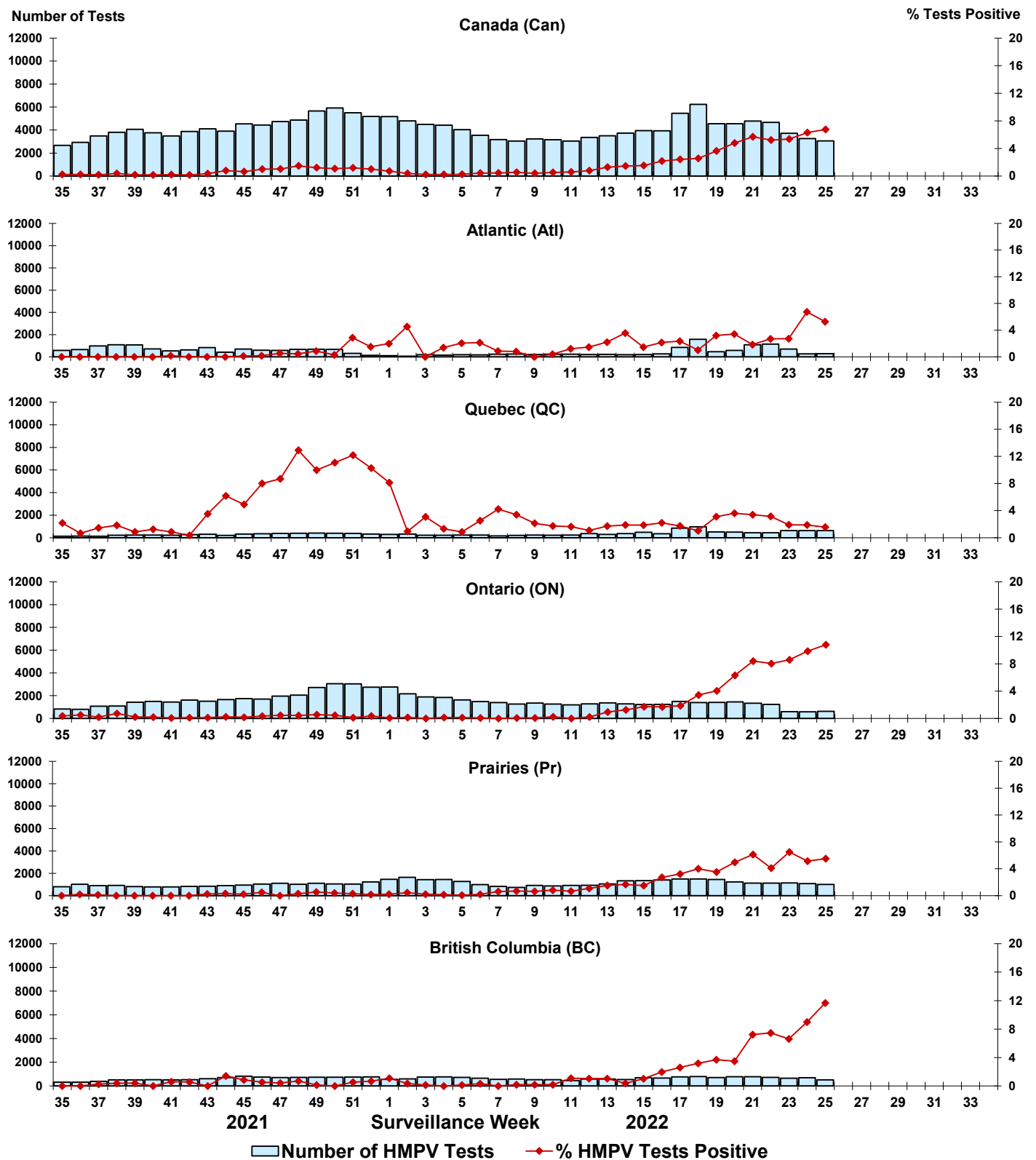


Figure 8: Positive Enterovirus/Rhinovirus (EV/RV) tests (%) in Canada by region by surveillance week

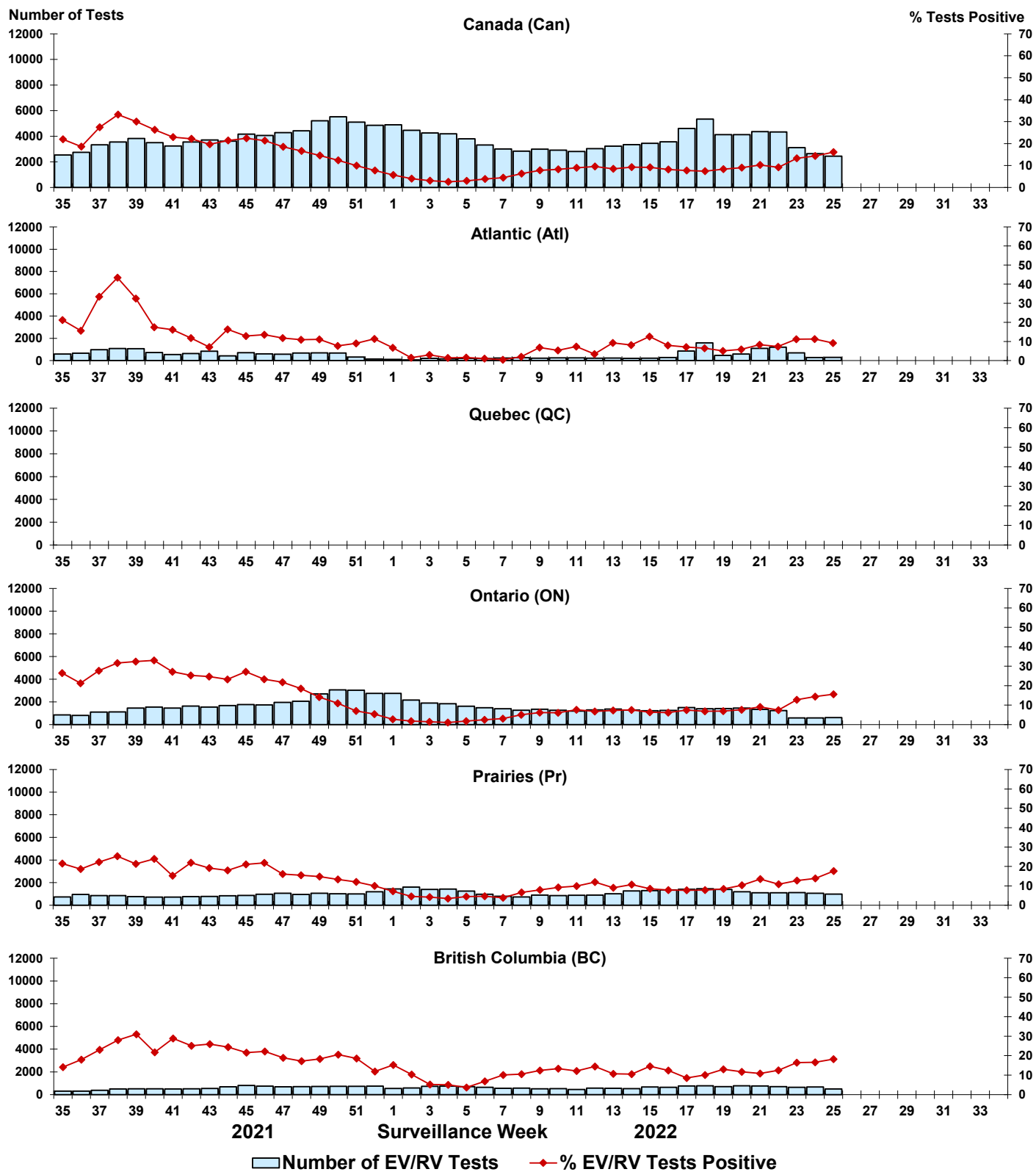


Figure 9: Positive Human coronavirus (HCoV) tests (%) in Canada by region by surveillance week

