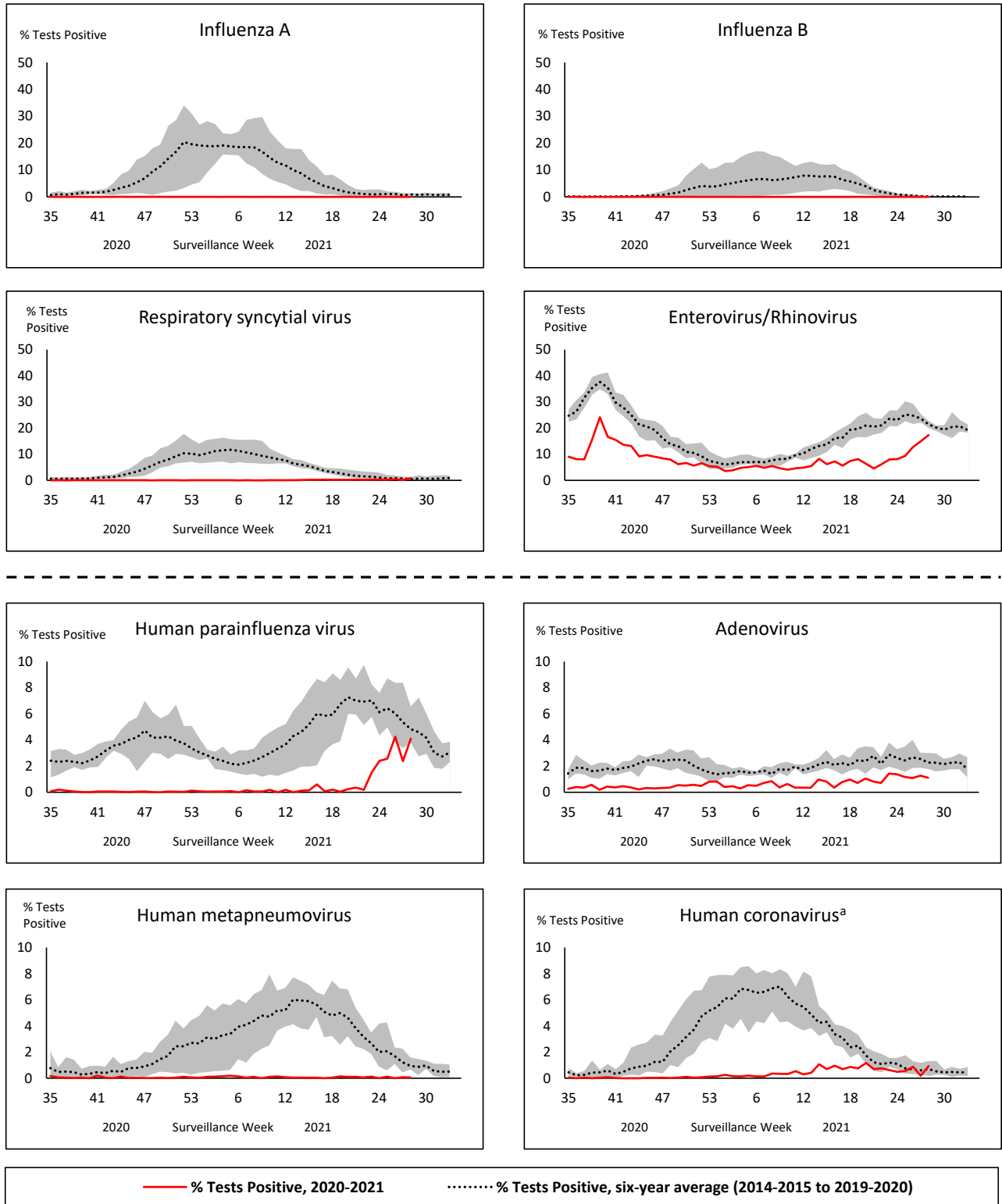


Respiratory Virus Report, Week 28 - ending July 17, 2021

The Respiratory Virus Detection Surveillance System collects data from select laboratories across Canada on the number of tests performed and the number of tests positive for influenza and other respiratory viruses. Data are reported on a weekly basis year-round to the Centre for Immunization and Respiratory Infectious Diseases (CIRID), Public Health Agency of Canada. These data are also summarized in the weekly FluWatch report.

In this Respiratory Virus Report, the number of detections of coronavirus reflects only seasonal human coronaviruses, not the novel pandemic coronavirus (SARS-CoV-2) that causes COVID-19. For information on COVID-19, see the [Coronavirus disease \(COVID-19\): Outbreak update](#).

Figure 1: Positive respiratory virus tests (%) reported by participating laboratories in Canada by surveillance week compared to average and range from 2014-2015 to 2019-2020 season



Shaded area represents the maximum and minimum % of respiratory virus tests positive reported by week from seasons 2014-2015 to 2019-2020

Note: Data from week 11 of the 2019-2020 season onwards is excluded from the historical comparison due to the COVID-19 pandemic

Note: % Tests Positive scale changes across the dashed line

^a Human coronavirus excludes human coronaviruses SARS-CoV, MERS-CoV and SARS-CoV-2; Includes seasonal human coronaviruses HCoV-229E, HCoV-OC43, HCoV-NL63, HCoV-HKU1.

Table 1: Respiratory virus detections for the week ending July 17, 2021 (surveillance week 2021-28)

Reporting Laboratory	Flu Tested	A(H1)pdm09 Positive	A(H3) Positive	A(UnS) Positive	Total Flu A Positive	Total Flu B Positive	RSV Tested	RSV Positive	HPIV Tested	HPIV 1 Positive	HPIV 2 Positive	HPIV 3 Positive	HPIV 4 Positive	Other HPIV Positive	ADV Tested	ADV Positive	HMPV Tested	HMPV Positive	EV/RV Tested	EV/RV Positive	HCoV Tested	HCoV Positive
Newfoundland	221	0	0	0	0	0	221	0	221	0	0	0	0	0	221	1	221	0	100	3	N.C.	N.C.
Prince Edward Island	34	0	0	0	0	0	34	0	34	0	0	0	0	0	34	0	34	0	34	6	34	0
Nova Scotia	41	0	0	0	0	0	41	0	35	0	0	0	0	0	35	0	35	0	35	1	35	0
New Brunswick	125	0	0	0	0	0	120	0	98	0	0	0	0	0	98	0	98	0	98	0	98	0
Atlantic	421	0	0	0	0	0	416	0	388	0	0	0	0	0	388	1	388	0	267	10	167	0
Région Nord-Est	420	0	0	0	0	0	22	0	0	0	0	0	0	0	0	0	0	0	N.C.	N.C.	0	0
Québec-Chaudière-Appalaches	30	0	0	0	0	0	30	0	29	0	0	4	0	0	29	1	29	0	N.C.	N.C.	29	0
Centre-du-Québec	15	0	0	0	0	0	15	0	19	0	0	6	0	0	19	2	19	0	N.C.	N.C.	19	0
Montréal-Laval	418	0	0	0	0	0	418	32	124	25	0	31	0	0	124	6	124	0	N.C.	N.C.	124	6
Ouest du Québec	14	0	0	0	0	0	14	0	0	0	0	0	0	0	0	0	0	0	N.C.	N.C.	0	0
Montérégie	9	0	0	0	0	0	9	0	0	0	0	0	0	0	0	0	0	0	N.C.	N.C.	0	0
Province of Québec	906	0	0	0	0	0	508	32	172	25	0	41	0	0	172	9	172	0	N.C.	N.C.	172	6
P.H.O.L. - Ottawa	17	0	0	0	0	0	17	0	14	0	0	0	0	0	14	0	14	0	14	2	14	0
EORLA - Ottawa	42	0	0	0	0	0	42	0	18	0	0	3	0	0	18	1	18	0	18	0	18	1
P.H.O.L. - Kingston	9	0	0	0	0	0	9	0	7	0	0	0	0	0	7	1	7	0	7	1	7	0
UHN / Mount Sinai Hospital	365	0	0	0	0	0	365	0	15	0	0	0	0	0	15	0	0	0	15	0	15	1
P.H.O.L. - Toronto	116	0	0	0	0	0	116	0	91	0	0	0	0	1	91	0	91	0	91	4	91	0
Sick Kids Hospital - Toronto	N.R.	N.R.	N.R.	N.R.	N.R.	N.R.	N.R.	N.R.	N.R.	N.R.	N.R.	N.R.	N.R.	N.R.	N.R.	N.R.	N.R.	N.R.	N.R.	N.R.	N.R.	N.R.
Sunnybrook & Women's College HSC	N.R.	N.R.	N.R.	N.R.	N.R.	N.R.	N.R.	N.R.	N.R.	N.R.	N.R.	N.R.	N.R.	N.R.	N.R.	N.R.	N.R.	N.R.	N.R.	N.R.	N.R.	N.R.
P.H.O.L. - Sault Ste. Marie	0	0	0	0	0	0	0	0	0	0	0	0	0	0	0	0	0	0	0	0	0	0
P.H.O.L. - Timmins	2	0	0	0	0	0	2	0	2	0	0	0	0	0	2	1	2	0	2	1	2	0
St. Joseph's - London	N.R.	N.R.	N.R.	N.R.	N.R.	N.R.	N.R.	N.R.	N.R.	N.R.	N.R.	N.R.	N.R.	N.R.	N.R.	N.R.	N.R.	N.R.	N.R.	N.R.	N.R.	N.R.
P.H.O.L. - London	9	0	0	0	0	0	9	0	2	0	0	0	0	0	2	0	2	0	2	0	2	0
P.H.O.L. - Orillia	8	0	0	0	0	0	8	0	0	0	0	0	0	0	0	0	0	0	0	0	0	0
P.H.O.L. - Thunder Bay	3	0	0	0	0	0	3	0	3	0	0	0	0	0	3	0	3	0	3	2	3	0
P.H.O.L. - Sudbury	4	0	0	0	0	0	4	0	1	0	0	0	0	0	1	0	1	0	1	0	1	0
P.H.O.L. - Hamilton	15	0	0	0	0	0	15	0	13	0	0	0	0	0	13	0	13	0	13	0	13	0
P.H.O.L. - Peterborough	8	0	0	0	0	0	8	0	8	0	0	0	0	0	8	0	8	0	8	0	8	0
St. Joseph's - Hamilton	141	0	0	0	0	0	141	0	141	0	0	2	0	0	141	1	141	0	141	9	0	0
Province of Ontario	739	0	0	0	0	0	739	0	315	0	0	5	0	1	315	4	300	0	315	19	174	2
Province of Manitoba	1031	0	0	0	0	0	1031	0	21	0	0	0	0	0	21	0	66	0	21	4	66	0
Province of Saskatchewan	43	0	0	0	0	0	43	0	39	0	0	0	0	0	39	0	39	0	39	5	39	1
Province of Alberta	1160	0	0	0	0	0	425	0	425	0	0	0	1	0	425	1	425	0	425	165	425	2
Prairies	2234	0	0	0	0	0	1499	0	485	0	0	0	1	0	485	1	530	0	485	174	530	3
British Columbia	525	0	0	0	0	0	525	0	413	0	0	0	0	0	413	5	245	1	240	25	237	1
Yukon	168	0	0	0	0	0	168	0	N.C.	N.C.	N.C.	N.C.	N.C.	N.C.	N.C.	N.C.	N.C.	N.C.	N.C.	N.C.	N.C.	N.C.
Northwest Territories	6	0	0	0	0	0	6	0	6	0	0	0	0	0	6	0	6	0	6	0	6	0
Nunavut	1	0	0	0	0	0	0	0	0	0	0	0	0	0	0	0	0	0	0	0	0	0
Territories	175	0	0	0	0	0	174	0	6	0	0	0	0	0	6	0	6	0	6	0	6	0
CANADA	5000	0	0	0	0	0	3861	32	1779	25	0	46	1	1	1779	20	1641	1	1313	228	1286	12

The data in the RVDSS report represent surveillance data available at the time of writing. Data missing from the current week are denoted by N.R. Data not collected by reporting lab denoted by N.C.

Specimens from Yukon (YT), Northwest Territories (NT) and Nunavut (NU) are sent to reference laboratories in other provinces and reported results reflect specimens identified as originating from YT, NT or NU.

Results from British Columbia comprise of specimens from the following sites: BC Children's and Women's Hospital, Children's and Women's Hospital Laboratory, Fraser Health Medical Microbiology Laboratory, Island Health, Providence Health Care, Powell River Hospital, St. Paul's Hospital, Vancouver General Hospital, Victoria General Hospital, BCCDC Public Health Laboratory, Interior Health Authority sites and Northern Health Authority sites.

Delays in the reporting of data may cause data to change retrospectively.

Influenza co-detections may cause the sum of A(H1)pdm09, A(H3), and A(UnS) positive results to exceed the sum of Total Flu A Positive results.

Table 2: Cumulative respiratory virus detections from August 23, 2020 to July 17, 2021 (surveillance week 2020-35 to 2021-28)

Reporting Laboratory	Flu Tested	A(H1)pdm09 Positive	A(H3) Positive	A(UnS) Positive	Total Flu A Positive	Total Flu B Positive	RSV Tested	RSV Positive	HPIV Tested	HPIV 1 Positive	HPIV 2 Positive	HPIV 3 Positive	HPIV 4 Positive	Other HPIV Positive	ADV Tested	ADV Positive	HMPV Tested	HMPV Positive	EV/RV Tested	EV/RV Positive	HCoV Tested	HCoV Positive
Newfoundland	13885	0	0	0	0	0	13884	10	13884	1	0	3	0	0	13897	57	13297	2	13362	2209	N.C.	N.C.
Prince Edward Island	4183	0	0	0	0	0	4183	4	4179	3	0	0	1	0	4179	42	4179	0	4179	482	4179	2
Nova Scotia	8624	0	0	0	0	0	8627	0	1472	0	10	0	1	0	1472	16	1472	1	1472	88	1500	0
New Brunswick	54699	0	0	0	0	1	20606	0	1688	0	0	0	0	0	1679	11	1679	0	1679	62	1634	2
Atlantic	81391	0	0	0	0	1	47300	14	21223	4	10	3	2	0	21227	126	20627	3	20692	2841	7313	4
Région Nord-Est	9846	0	0	0	0	0	1236	1	8	0	0	0	0	0	8	1	8	0	N.C.	N.C.	8	0
Québec-Chaudière-Appalaches	916	0	0	1	1	0	1039	3	858	0	0	39	1	0	860	50	855	0	N.C.	N.C.	838	31
Centre-du-Québec	968	0	0	0	0	0	976	2	465	0	0	17	0	0	463	25	465	0	N.C.	N.C.	462	17
Montréal-Laval	12057	0	0	0	0	0	11101	262	5122	88	0	122	0	0	5176	191	5106	4	N.C.	N.C.	5106	133
Ouest du Québec	2565	0	0	0	0	0	2508	0	0	0	0	0	0	0	0	0	0	0	N.C.	N.C.	0	0
Montérégie	1261	0	0	0	0	0	1261	2	0	0	0	0	0	0	0	0	0	0	N.C.	N.C.	0	0
Province of Québec	27613	0	0	1	1	0	18121	270	6453	88	0	178	1	0	6507	267	6434	4	N.C.	N.C.	6414	181
P.H.O.L. - Ottawa	663	0	0	0	0	0	663	1	553	0	0	0	0	0	553	0	552	0	553	26	552	2
CHEO - Ottawa	5421	0	0	1	1	1	5018	5	1136	0	0	3	0	0	1011	16	1011	1	1011	111	1011	6
P.H.O.L. - Kingston	919	0	0	1	1	0	919	0	594	0	0	0	0	0	594	5	587	0	594	109	587	0
UHN / Mount Sinai Hospital	16587	2	0	2	4	1	16518	7	10702	3	2	5	8	0	9076	10	10647	10	10459	105	8498	7
P.H.O.L. - Toronto	7156	0	0	0	0	0	7153	3	6130	0	0	0	0	4	6131	19	6128	2	6130	174	6128	6
Sick Kids Hospital - Toronto	1237	0	0	0	0	0	0	0	1237	0	0	0	0	0	1237	18	1237	0	1237	119	1237	1
Sunnybrook & Women's College HSC	0	0	0	0	0	0	0	0	0	0	0	0	0	0	0	0	0	0	0	0	0	0
P.H.O.L. - Sault Ste. Marie	179	0	0	2	2	0	177	0	103	0	0	0	0	0	103	0	103	0	103	6	103	0
P.H.O.L. - Timmins	635	0	0	0	0	0	635	0	175	0	0	0	0	0	175	1	174	0	175	32	174	0
St. Joseph's - London	218	0	0	0	0	0	218	0	55	0	0	0	0	0	55	0	55	0	91	8	36	0
P.H.O.L. - London	2007	1	0	5	6	2	1997	0	1339	0	0	0	0	2	1339	2	1333	0	1339	127	1333	3
P.H.O.L. - Orillia	420	0	0	1	1	0	418	0	204	0	0	0	0	0	204	2	204	0	204	12	204	0
P.H.O.L. - Thunder Bay	426	0	0	0	0	0	426	0	406	0	0	0	0	0	407	3	406	0	406	140	406	0
P.H.O.L. - Sudbury	526	0	0	0	0	0	524	0	347	0	0	0	0	4	347	3	347	0	347	30	347	5
P.H.O.L. - Hamilton	1576	0	0	0	0	0	1521	1	1265	0	0	0	0	0	1265	2	1265	0	1265	103	1265	0
P.H.O.L. - Peterborough	569	0	0	1	1	0	523	0	410	0	0	0	0	0	410	0	409	0	410	26	409	0
St. Joseph's - Hamilton	10624	0	0	0	0	0	10624	3	10624	0	0	4	0	0	10624	24	10624	0	10624	486	0	0
Province of Ontario	49163	3	0	13	16	4	47334	20	35280	3	2	12	8	10	33531	105	35082	13	34948	1614	22290	30
Manitoba	65598	0	1	3	4	2	65588	69	2892	0	1	2	0	0	2892	20	4051	1	2892	180	4051	6
Province of Saskatchewan	172081	0	0	1	1	0	27214	4	2144	0	0	1	1	0	2144	18	2144	4	2144	221	2144	14
Province of Alberta	134921	7	0	6	13	0	80361	0	80361	2	20	7	10	0	80361	168	80361	11	80361	7082	80361	33
Prairies	372600	7	1	10	18	2	173163	73	85397	2	21	10	11	0	85397	206	86556	16	85397	7483	86556	53
British Columbia	91965	3	8	1	10	8	91466	6	20491	2	4	1	14	6	21037	137	20666	69	20450	1677	16296	25
Yukon	7499	0	0	8	8	7	7408	4	N.C.	N.C.	N.C.	N.C.	N.C.	N.C.	N.C.	N.C.	N.C.	N.C.	N.C.	N.C.	N.C.	N.C.
Northwest Territories	1222	0	0	0	0	0	1165	0	1165	0	0	0	1	0	1165	12	1165	1	1165	327	1165	1
Nunavut	1127	0	0	0	0	0	1103	0	1103	3	1	0	0	0	1103	25	1103	5	1103	282	191	0
Territories	9848	0	0	8	8	7	9676	4	2268	3	1	0	1	0	2268	37	2268	6	2268	609	1356	1
CANADA	632580	13	9	33	53	22	387060	387	171112	102	38	204	37	16	169967	878	171633	111	163755	14224	140225	294

The data in the RVDSS report represent surveillance data available at the time of writing. Data not collected by reporting lab denoted by N.C.

Specimens from Yukon (YT), Northwest Territories (NT) and Nunavut (NU) are sent to reference laboratories in other provinces and reported results reflect specimens identified as originating from YT, NT or NU.

Results from British Columbia comprise of specimens from the following sites: BC Children's and Women's Hospital, Children's and Women's Hospital Laboratory, Fraser Health Medical Microbiology Laboratory, Island Health, Providence Health Care, Powell River Hospital, St. Paul's Hospital, Vancouver General Hospital, Victoria General Hospital, BCCDC Public Health Laboratory, Interior Health Authority sites and Northern Health Authority sites.

Delays in the reporting of data may cause data to change retrospectively. Due to these delays, the sum of weekly report totals do not add up to cumulative totals.

Influenza co-detections may cause the sum of A(H1N1)pdm09, A(H3), and A(UnS) positive results to exceed the sum of Total Flu A Positive results.

Figure 2: Number of positive respiratory virus tests reported by participating laboratories in Canada by surveillance week

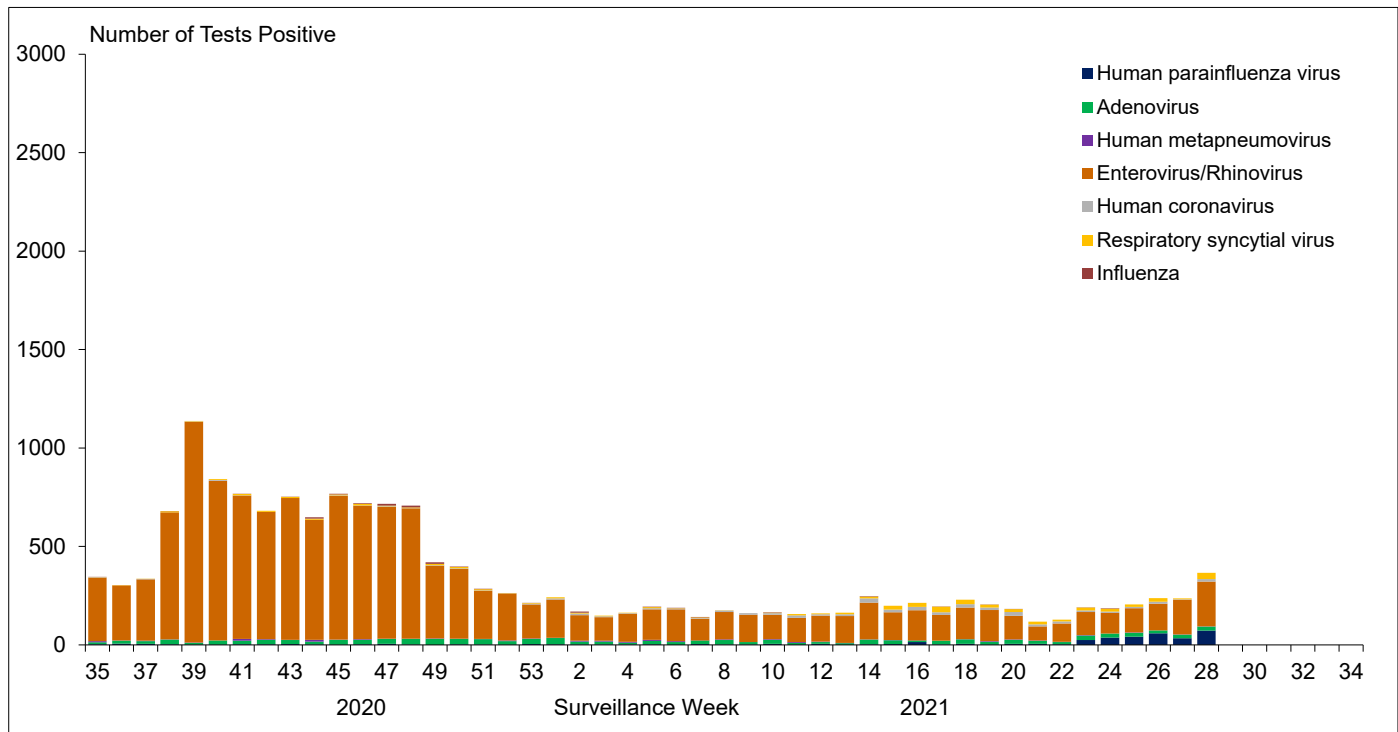


Figure 3: Positive Influenza (Flu) tests (%) in Canada by region by surveillance week

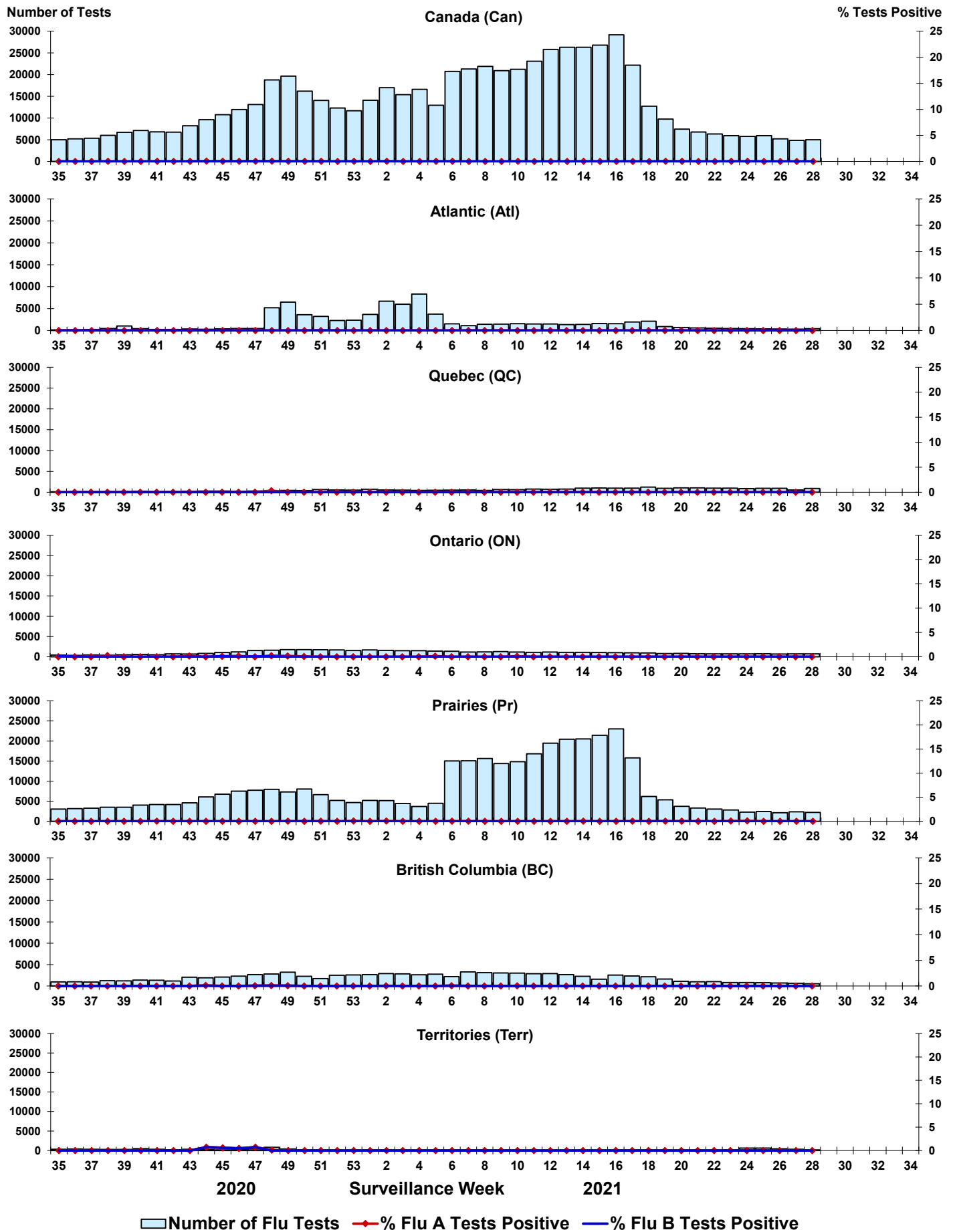


Figure 4: Positive Respiratory syncytial virus (RSV) tests (%) in Canada by region by surveillance week

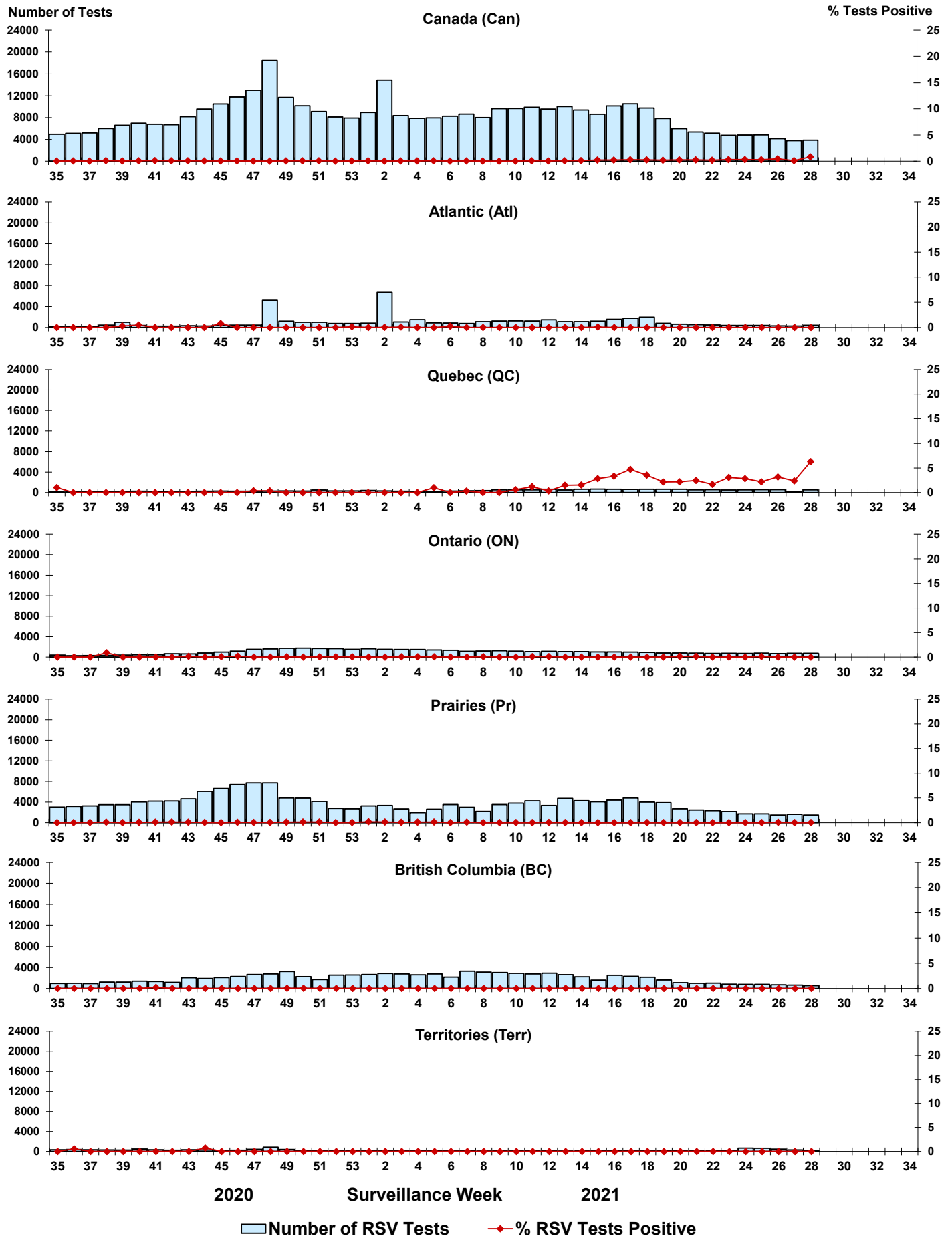


Figure 5: Positive Human parainfluenza virus (HPIV) tests (%) in Canada by region by surveillance week

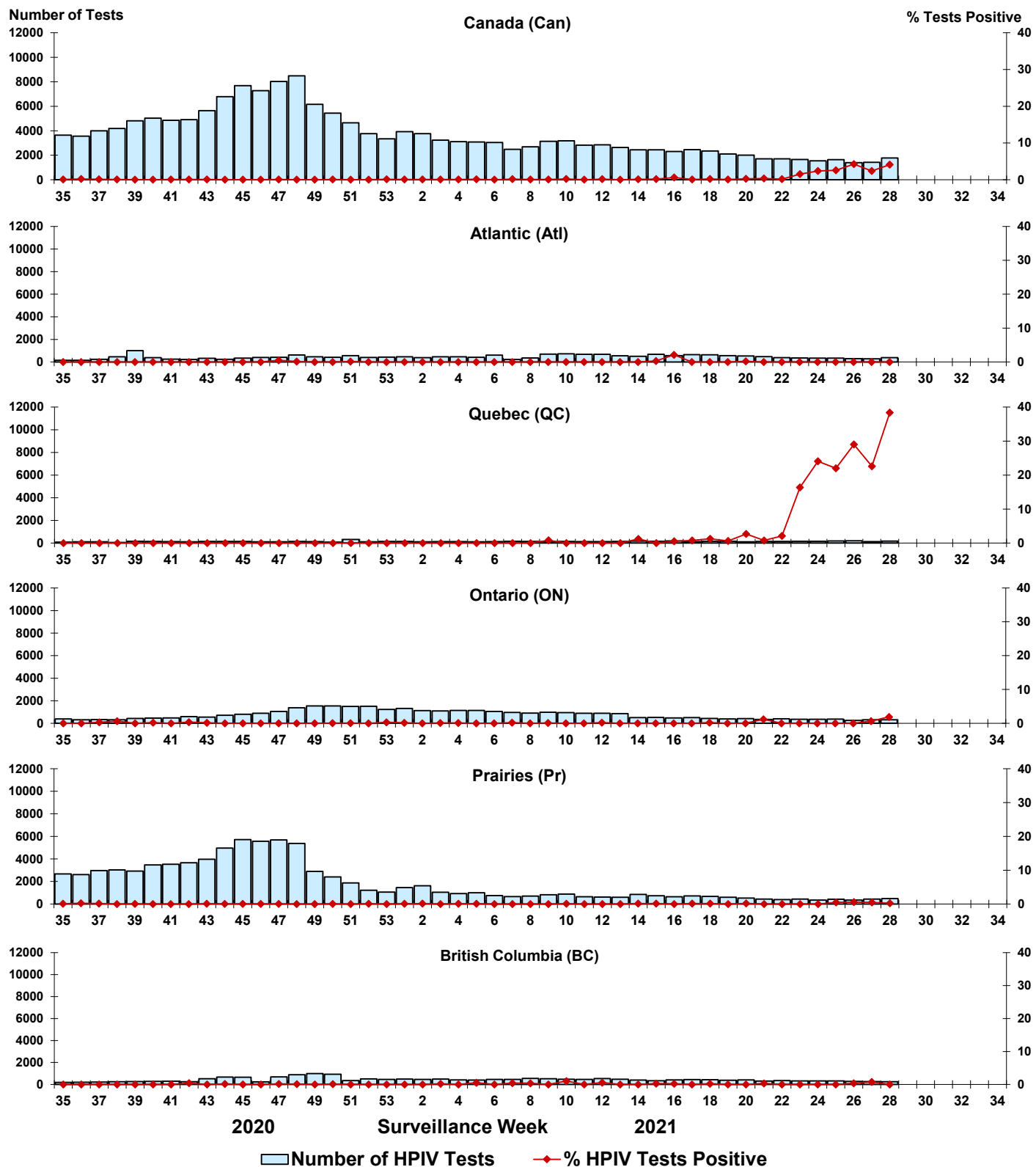


Figure 6: Positive Adenovirus (ADV) tests (%) in Canada by region by surveillance week

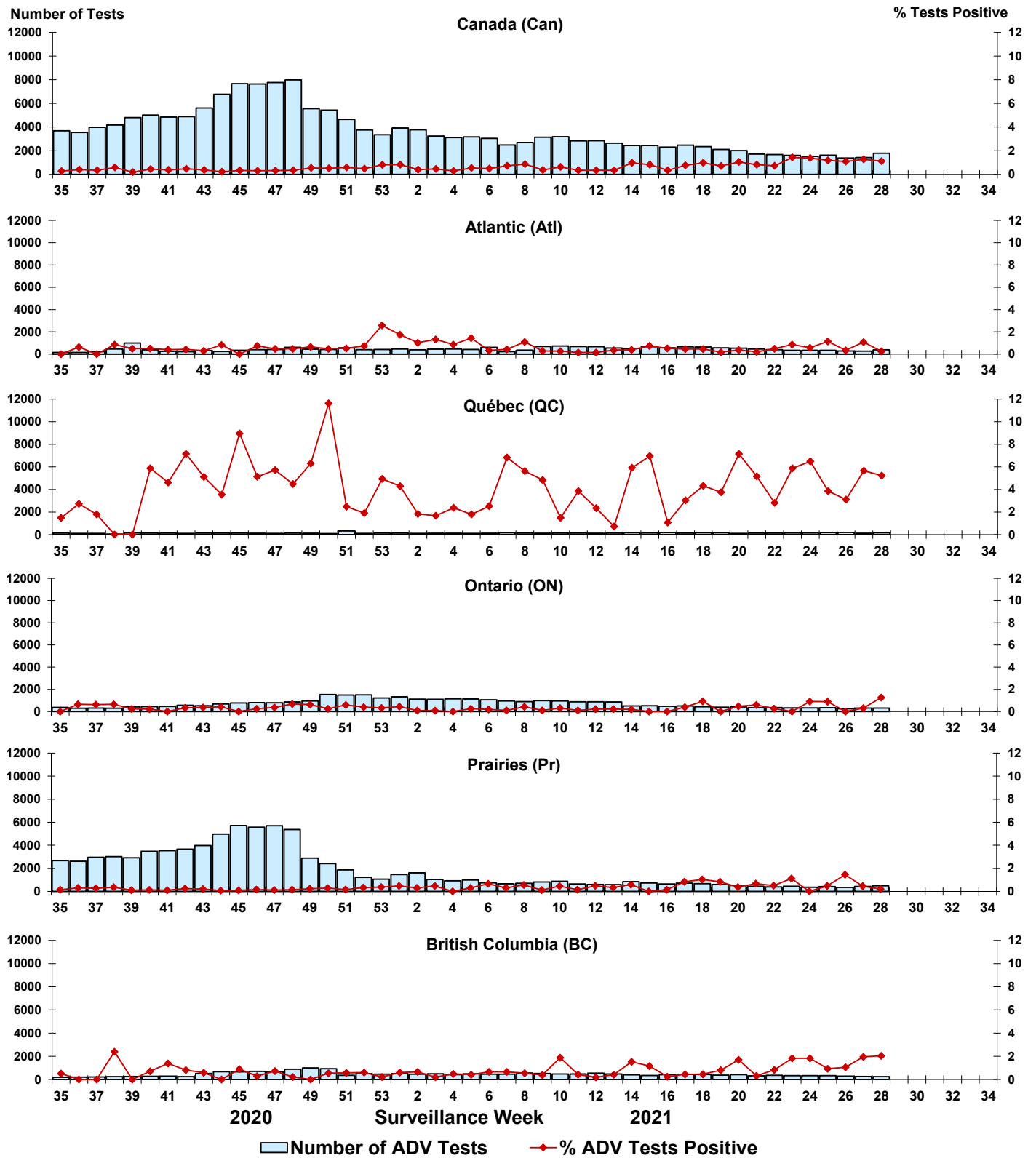


Figure 7: Positive Human metapneumovirus (HMPV) tests (%) in Canada by region by surveillance week

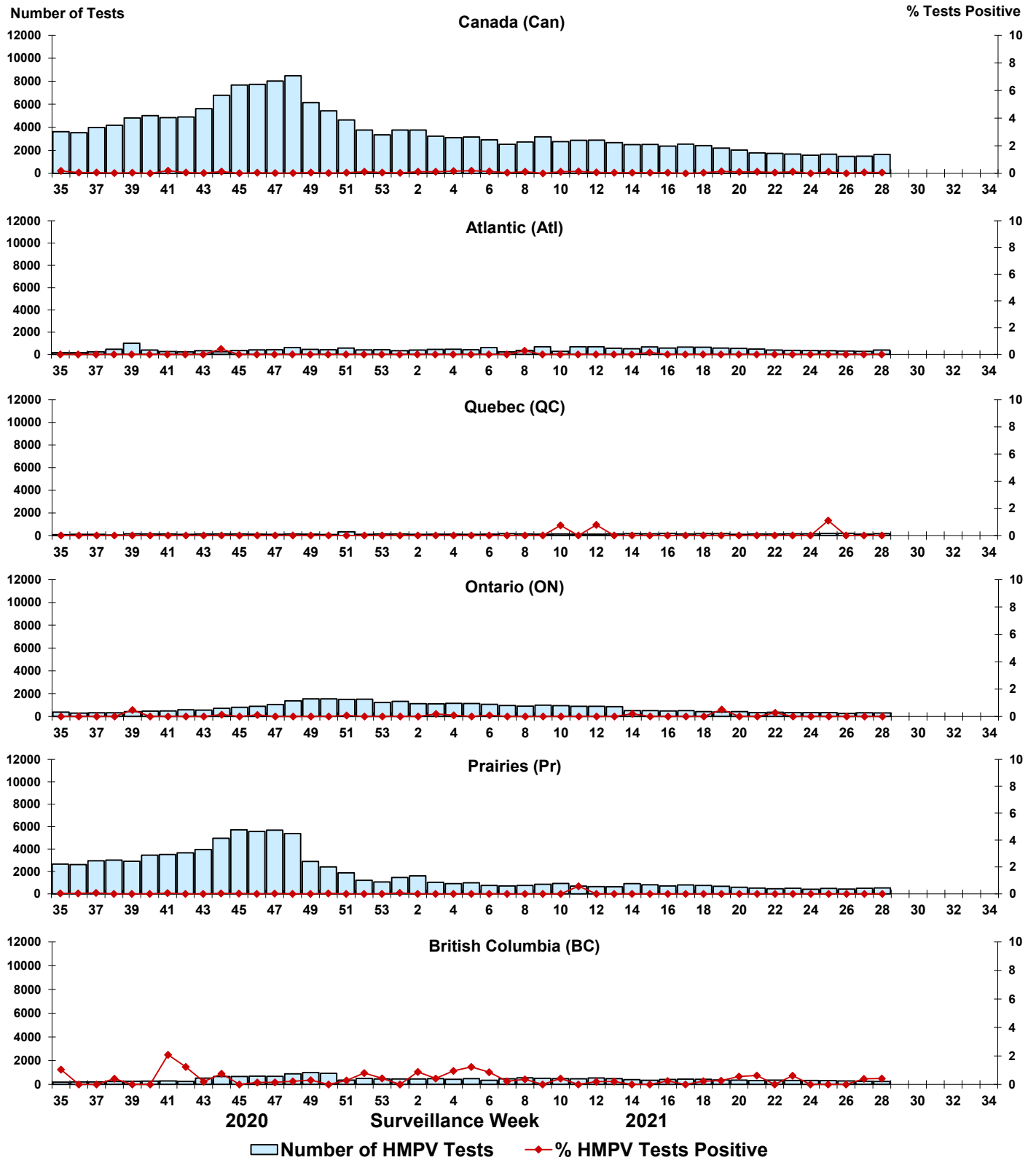


Figure 8: Positive Enterovirus/Rhinovirus (EV/RV) tests (%) in Canada by region by surveillance week

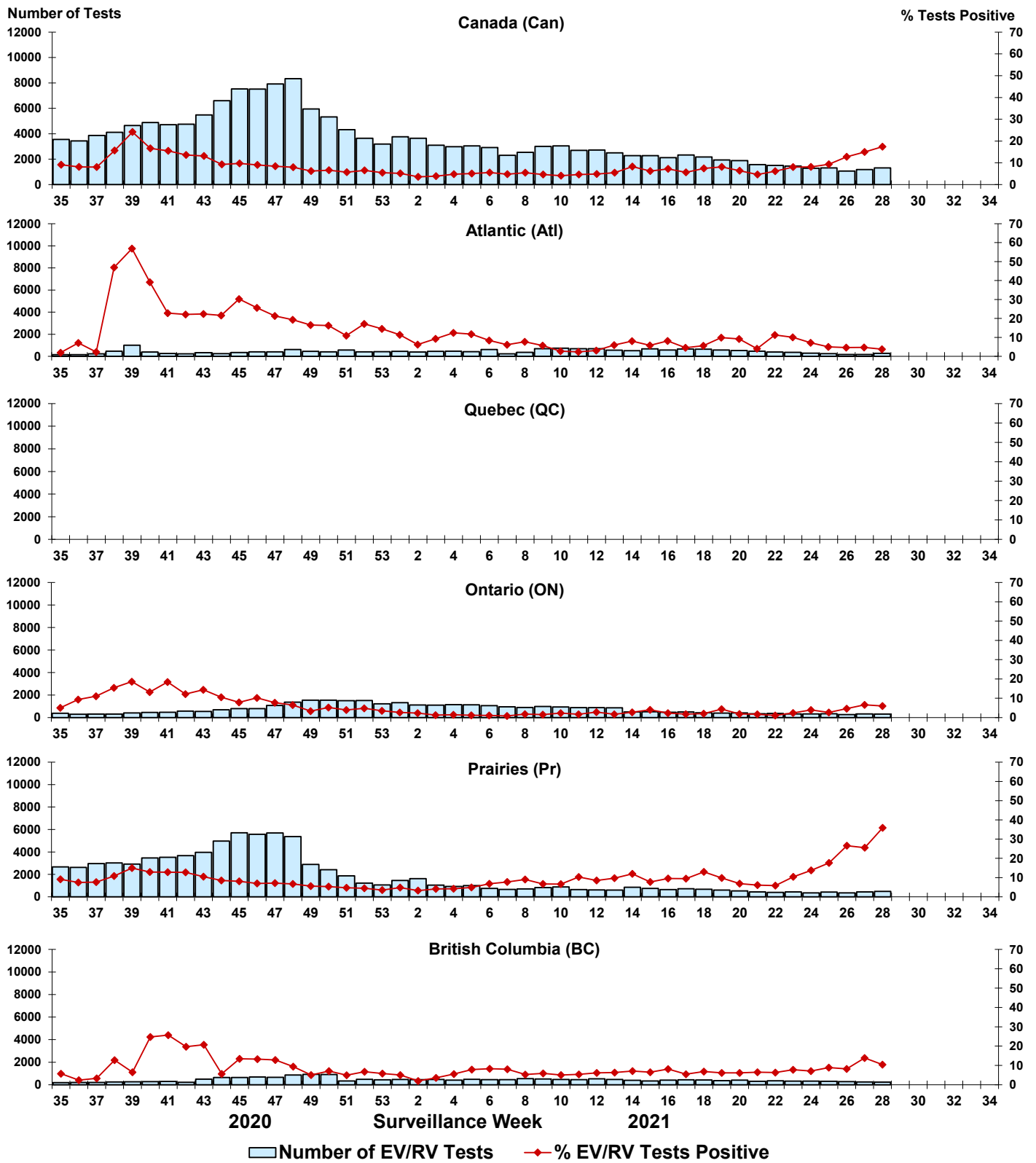
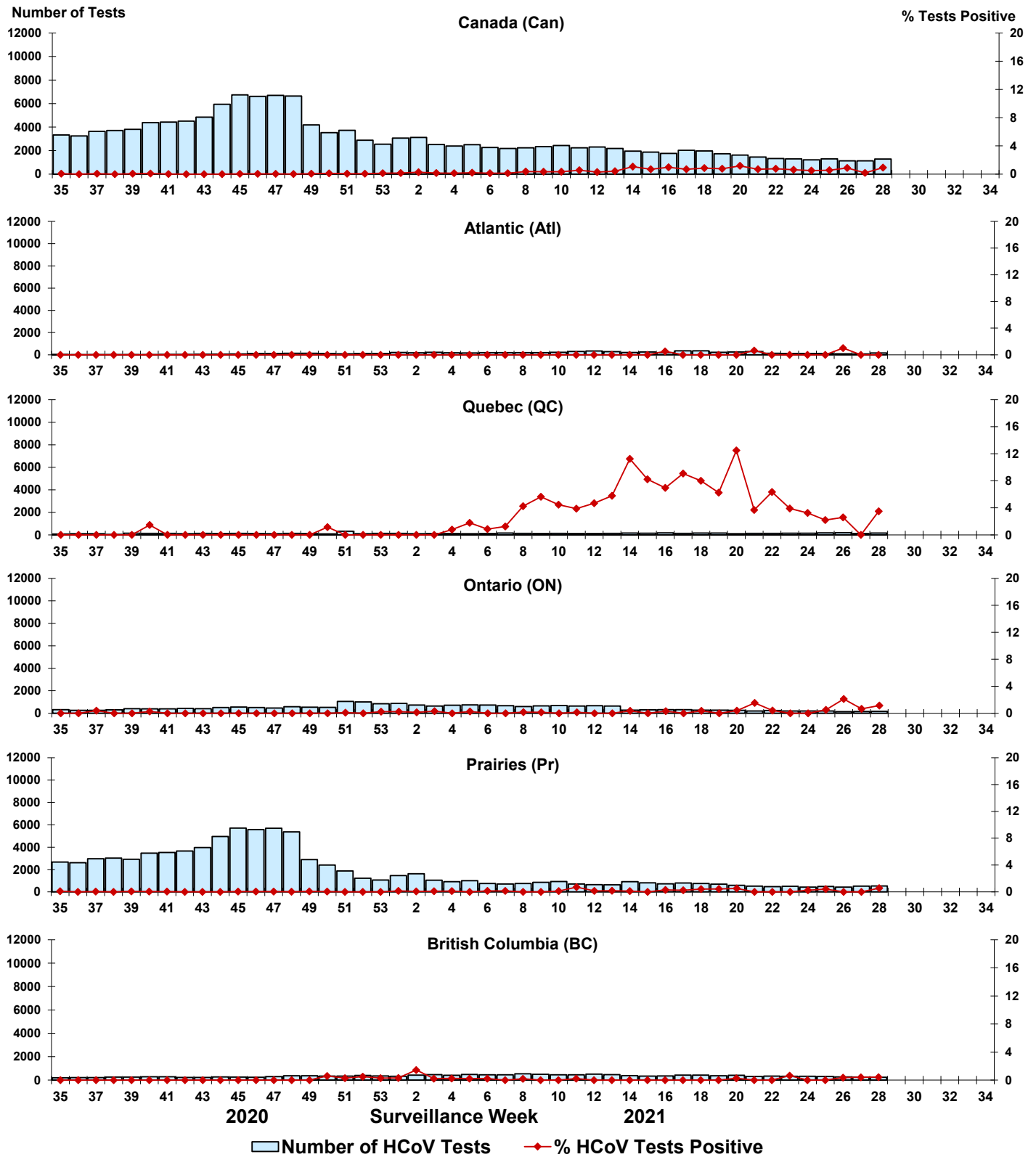


Figure 9: Positive Human coronavirus (HCoV) tests (%) in Canada by region by surveillance week



Abbreviations:

Flu: Influenza

A(H1)pdm09: Influenza A(H1N1)pdm09

A(H3): Influenza A(H3N2)

A(UnS): Influenza A(Unsubtyped)

RSV: Respiratory syncytial virus

HPIV: Human parainfluenza virus

HMPV: Human metapneumovirus

ADV: Adenovirus

EV/RV: Enterovirus/Rhinovirus

HCoV: Human coronavirus

Atl: Atlantic Canada

BC: British Columbia

Can: Canada

CHEO: Children's Hospital of Eastern Ontario

HSC: Health Sciences Centre

N.C.: Data not collected

N.R.: Data not reported for current week

ON: Ontario

PR: Prairies

P.H.O.L.: Public Health Ontario Laboratory

QC: Quebec

Terr: Territories of Canada

UHN: University Health Network