

# RESPIRATORY VIRUS DETECTION REPORT

July 17 to July 23, 2022  
(Surveillance Week 2022-29)



In this Respiratory Virus Report, the number of detections of coronavirus reflects only seasonal human coronaviruses, not the novel pandemic coronavirus (SARS-CoV-2) that causes COVID-19. For information on COVID-19, see the [Coronavirus disease \(COVID-19\): Outbreak update](#).

## Overall Summary

Weekly respiratory virus detections have steadily decreased since mid-May.

- Influenza activity is at interseasonal levels, with only 69 detections (64 influenza A, 5 influenza B) reported in week 29 (week ending July 23, 2022).
- Enterovirus/Rhinovirus remains the most common seasonal respiratory virus detected in Canada (364 detections; 15.3% positive). Activity remains slightly below expected levels for this time of year.
- Activity of most other respiratory viruses is near expected levels.
  - With the exception of human metapneumovirus, where activity has decreased in recent weeks but is above expected levels for this time of year (109 detections; 3.7% positive).
- The number of tests performed for all viruses was above expected levels.
- 30/34 sentinel laboratories reported surveillance data.

## Abbreviations

Flu: Influenza

Flu A(H1N1)pdm09: Influenza A(H1N1)pdm09

Flu A(H3): Influenza A(H3N2)

Flu A (UnS): Influenza A(Unsubtyped)

RSV: Respiratory syncytial virus

HPIV: Human parainfluenza virus

HMPV: Human metapneumovirus

ADV: Adenovirus

EV/RV: Enterovirus/Rhinovirus

HCoV: Human coronavirus

Atl: Atlantic Canada

BC: British Columbia

Can: Canada

EORLA: Eastern Ontario Regional Laboratory Association

HSC: Health Sciences Centre

N.C.: Data not collected

N.R.: Data not reported for current week

ON: Ontario

PR: Prairies

P.H.O.L.: Public Health Ontario Laboratory

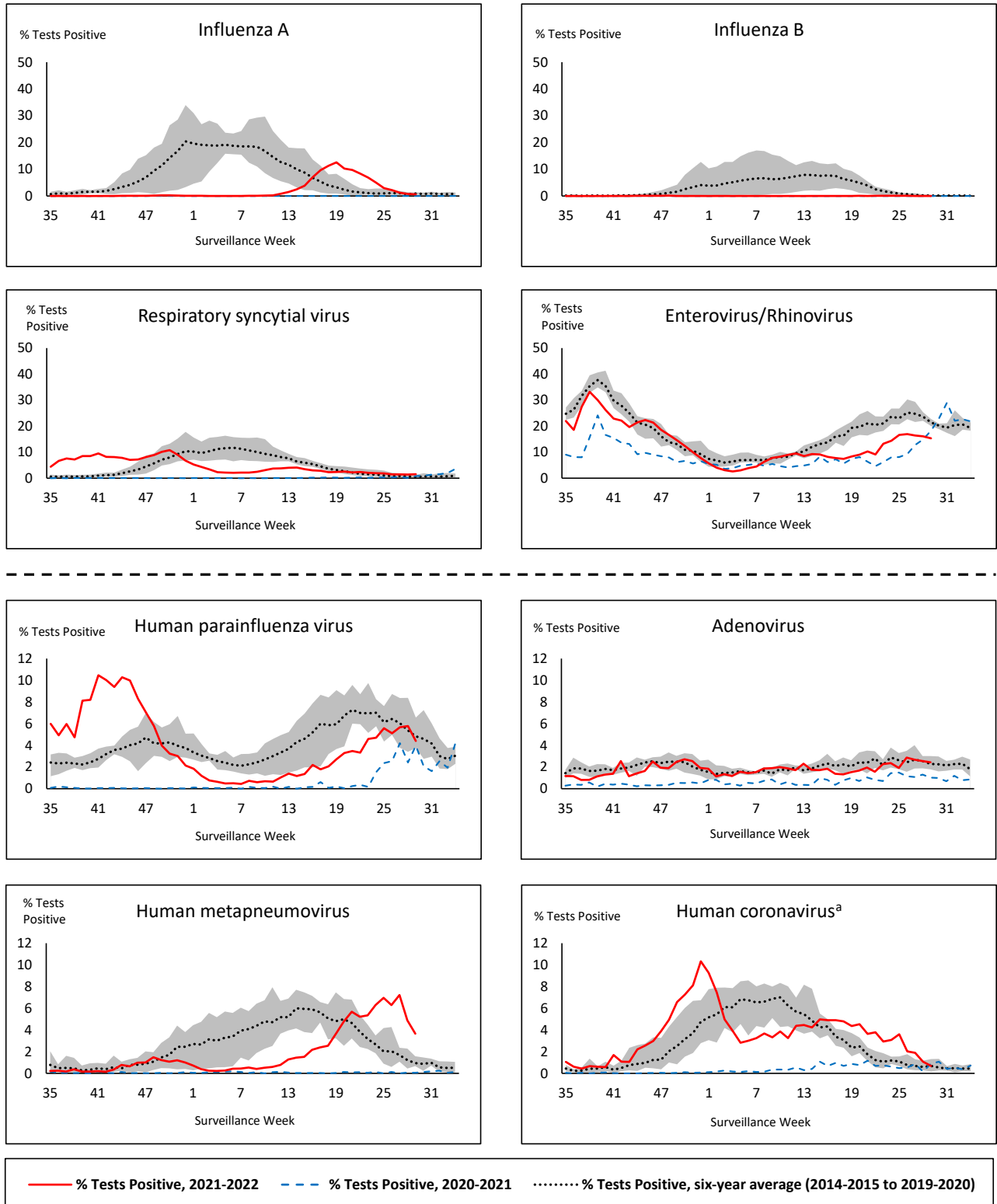
QC: Quebec

Terr: Territories of Canada

UHN: University Health Network



**Figure 1: Positive respiratory virus tests (%) reported by participating laboratories in Canada by surveillance week compared to average and range from 2014-2015 to 2019-2020 season**



Shaded area represents the maximum and minimum % of respiratory virus tests positive reported by week from seasons 2014-2015 to 2019-2020

Note: Data from week 11 of the 2019-2020 season onwards are excluded from the historical comparison due to the COVID-19 pandemic

Note: % Tests Positive scale changes across the dashed line

<sup>a</sup> Human coronavirus excludes human coronaviruses SARS-CoV, MERS-CoV and SARS-CoV-2; Includes seasonal human coronaviruses HCoV-229E, HCoV-OC43, HCoV-NL63, HCoV-HKU1.

**Table 1: Respiratory virus detections for the week ending July 23, 2022 (surveillance week 2022-29)**

Reporting Laboratory	Flu Tested	A(H1)pdm09 Positive	A(H3) Positive	A(UnS) Positive	Total Flu A Positive	Total Flu B Positive	RSV Tested	RSV Positive	HPIV Tested	HPIV 1 Positive	HPIV 2 Positive	HPIV 3 Positive	HPIV 4 Positive	Other HPIV Positive	ADV Tested	ADV Positive	HMPV Tested	HMPV Positive	EV/RV Tested	EV/RV Positive	HCoV Tested	HCoV Positive
Newfoundland	208	0	0	5	5	0	208	7	208	0	0	0	0	0	208	2	208	2	208	2	208	1
Prince Edward Island	38	0	0	0	0	0	38	2	38	1	0	1	3	0	38	2	38	3	38	10	38	0
Nova Scotia	547	0	0	2	2	0	546	15	27	0	0	1	1	0	27	1	27	1	27	0	27	0
New Brunswick	432	0	0	1	1	0	298	5	56	0	2	4	0	0	56	2	56	1	56	4	56	1
<b>Atlantic</b>	<b>1225</b>	<b>0</b>	<b>0</b>	<b>8</b>	<b>8</b>	<b>0</b>	<b>1090</b>	<b>29</b>	<b>329</b>	<b>1</b>	<b>2</b>	<b>6</b>	<b>4</b>	<b>0</b>	<b>329</b>	<b>7</b>	<b>329</b>	<b>7</b>	<b>329</b>	<b>16</b>	<b>329</b>	<b>2</b>
Région Nord-Est	648	0	0	2	2	1	134	2	5	0	0	2	0	0	5	0	5	0	N.C.	N.C.	5	0
Québec-Chaudière-Appalaches	499	0	0	0	0	1	499	0	17	0	0	1	0	0	212	2	212	2	N.C.	N.C.	88	1
Centre-du-Québec	390	0	0	4	4	0	299	4	18	0	0	0	0	0	18	1	18	0	N.C.	N.C.	18	1
Montréal-Laval	1165	0	0	2	2	2	952	16	370	0	0	17	0	0	370	17	370	16	N.C.	N.C.	403	4
Ouest du Québec	190	0	0	2	2	0	190	1	14	0	0	0	0	0	14	1	14	0	N.C.	N.C.	14	0
Montérégie	146	0	0	0	0	0	146	2	0	0	0	0	0	0	0	0	0	0	N.C.	N.C.	0	0
<b>Province of Québec</b>	<b>3038</b>	<b>0</b>	<b>0</b>	<b>10</b>	<b>10</b>	<b>4</b>	<b>2220</b>	<b>25</b>	<b>424</b>	<b>0</b>	<b>0</b>	<b>20</b>	<b>0</b>	<b>0</b>	<b>619</b>	<b>21</b>	<b>619</b>	<b>18</b>	<b>N.C.</b>	<b>N.C.</b>	<b>528</b>	<b>6</b>
P.H.O.L. - Ottawa	33	0	0	0	0	0	33	0	33	0	0	0	0	1	33	0	33	1	33	4	33	1
EORLA	N.R.	N.R.	N.R.	N.R.	N.R.	N.R.	N.R.	N.R.	N.R.	N.R.	N.R.	N.R.	N.R.	N.R.	N.R.	N.R.	N.R.	N.R.	N.R.	N.R.	N.R.	N.R.
P.H.O.L. - Kingston	32	0	0	0	0	0	32	1	32	0	0	0	0	0	32	1	32	1	32	4	32	1
UHN / Mount Sinai Hospital	442	0	0	0	0	0	442	2	17	0	0	0	0	0	17	0	17	0	17	2	17	0
P.H.O.L. - Toronto	294	0	4	1	1	0	294	5	294	0	0	0	0	11	294	2	294	9	294	25	294	2
Sick Kids Hospital - Toronto	N.R.	N.R.	N.R.	N.R.	N.R.	N.R.	N.R.	N.R.	N.R.	N.R.	N.R.	N.R.	N.R.	N.R.	N.R.	N.R.	N.R.	N.R.	N.R.	N.R.	N.R.	N.R.
Sunnybrook & Women's College HSC	N.R.	N.R.	N.R.	N.R.	N.R.	N.R.	N.R.	N.R.	N.R.	N.R.	N.R.	N.R.	N.R.	N.R.	N.R.	N.R.	N.R.	N.R.	N.R.	N.R.	N.R.	N.R.
P.H.O.L. - Sault Ste. Marie	6	0	0	0	0	0	6	0	6	0	0	0	0	0	6	0	6	0	6	5	6	0
P.H.O.L. - Timmins	8	0	0	0	0	0	8	0	8	0	0	0	0	0	8	0	8	0	8	0	8	0
St. Joseph's - London	78	0	0	0	0	0	78	0	78	0	0	0	0	1	78	2	78	4	78	7	6	0
P.H.O.L. - London	55	0	0	1	1	0	55	0	55	0	0	0	0	2	55	1	55	2	55	4	55	1
P.H.O.L. - Orillia	24	0	0	0	0	0	24	3	24	0	0	0	0	0	24	1	24	1	24	10	24	0
P.H.O.L. - Thunder Bay	8	0	0	0	0	0	8	0	8	0	0	0	0	0	8	0	8	0	8	1	8	0
P.H.O.L. - Sudbury	3	0	0	0	0	0	3	0	3	0	0	0	0	0	3	0	3	0	3	2	3	0
P.H.O.L. - Hamilton	32	0	0	0	0	0	32	0	32	0	0	0	0	0	32	1	32	2	32	3	32	0
P.H.O.L. - Peterborough	11	0	0	0	0	0	11	6	11	0	0	0	0	0	11	1	11	2	11	2	11	0
St. Joseph's - Hamilton	N.R.	N.R.	N.R.	N.R.	N.R.	N.R.	N.R.	N.R.	N.R.	N.R.	N.R.	N.R.	N.R.	N.R.	N.R.	N.R.	N.R.	N.R.	N.R.	N.R.	N.R.	N.R.
<b>Province of Ontario</b>	<b>1026</b>	<b>0</b>	<b>4</b>	<b>2</b>	<b>2</b>	<b>0</b>	<b>1026</b>	<b>17</b>	<b>601</b>	<b>0</b>	<b>0</b>	<b>0</b>	<b>0</b>	<b>15</b>	<b>601</b>	<b>9</b>	<b>601</b>	<b>22</b>	<b>601</b>	<b>69</b>	<b>529</b>	<b>5</b>
Province of Manitoba	397	0	1	0	1	0	397	16	125	1	0	1	4	0	125	1	136	10	125	22	136	0
Province of Saskatchewan	354	0	0	1	1	0	354	3	190	0	0	13	4	0	190	3	190	9	190	34	190	1
Province of Alberta	1636	1	17	8	26	0	1418	20	654	0	5	21	7	0	654	14	654	8	640	93	654	4
<b>Prairies</b>	<b>2387</b>	<b>1</b>	<b>18</b>	<b>9</b>	<b>28</b>	<b>0</b>	<b>2169</b>	<b>39</b>	<b>969</b>	<b>1</b>	<b>5</b>	<b>35</b>	<b>15</b>	<b>0</b>	<b>969</b>	<b>18</b>	<b>980</b>	<b>27</b>	<b>955</b>	<b>149</b>	<b>980</b>	<b>5</b>
<b>British Columbia</b>	<b>2560</b>	<b>0</b>	<b>6</b>	<b>1</b>	<b>16</b>	<b>1</b>	<b>2443</b>	<b>23</b>	<b>447</b>	<b>1</b>	<b>2</b>	<b>7</b>	<b>7</b>	<b>0</b>	<b>447</b>	<b>17</b>	<b>447</b>	<b>35</b>	<b>437</b>	<b>114</b>	<b>437</b>	<b>1</b>
Yukon	4	0	0	0	0	0	4	0	N.C.	N.C.	N.C.	N.C.	N.C.	N.C.	N.C.	N.C.	N.C.	N.C.	N.C.	N.C.	N.C.	N.C.
Northwest Territories	56	0	0	0	0	0	56	4	3	0	0	1	0	0	3	0	3	0	51	16	3	0
Nunavut	106	0	0	0	0	0	106	1	N.C.	N.C.	N.C.	N.C.	N.C.	N.C.	N.C.	N.C.	N.C.	N.C.	N.C.	N.C.	N.C.	N.C.
<b>Territories</b>	<b>166</b>	<b>0</b>	<b>0</b>	<b>0</b>	<b>0</b>	<b>0</b>	<b>166</b>	<b>5</b>	<b>4</b>	<b>0</b>	<b>0</b>	<b>1</b>	<b>0</b>	<b>0</b>	<b>4</b>	<b>0</b>	<b>4</b>	<b>0</b>	<b>52</b>	<b>16</b>	<b>4</b>	<b>0</b>
<b>CANADA</b>	<b>10402</b>	<b>1</b>	<b>28</b>	<b>30</b>	<b>64</b>	<b>5</b>	<b>9114</b>	<b>138</b>	<b>2774</b>	<b>3</b>	<b>9</b>	<b>69</b>	<b>26</b>	<b>15</b>	<b>2969</b>	<b>72</b>	<b>2980</b>	<b>109</b>	<b>2374</b>	<b>364</b>	<b>2807</b>	<b>19</b>

The data in the RVDSS report represent surveillance data available at the time of writing. Data missing from the current week are denoted by N.R. Data not collected by reporting lab denoted by N.C.

The reporting laboratory previously listed as CHEO - Ottawa is now listed as EORLA to better reflect data submitted by this provider.

Specimens from Yukon (YT) are sent to reference laboratories in British Columbia and reported results reflect specimens identified as originating from YT.

Results from British Columbia comprise of specimens from the following sites: BC Children's and Women's Hospital, Children's and Women's Hospital Laboratory, Fraser Health Medical Microbiology Laboratory, Island Health, Providence Health Care, Powell River Hospital , St. Paul's Hospital , Vancouver General Hospital, Victoria General Hospital, BCCDC Public Health Laboratory, Interior Health Authority sites and Northern Health Authority sites.

Delays in the reporting of data may cause data to change retrospectively.

For British Columbia, only data from subtyped influenza A specimens are included in the weekly number of influenza A detections. The sum of A(H1N1)pdm09, A(H3), and A(UnS) positive results may not equal the sum of total Flu A positive results.

Due to different testing protocols of laboratories across Canada, influenza A subtype detection counts may not be included in total influenza A detection counts, as some subtype detections are not available through routine testing but are subsequently reported if further subtype testing is conducted. In these instances, subtype counts do not reflect influenza A detections intended to be captured by routine surveillance, and are excluded from total detections and percent positivity.

**Table 2: Cumulative respiratory virus detections from August 29, 2021 to July 23, 2022 (surveillance week 2021-35 to 2022-29)**

Reporting Laboratory	Flu Tested	A(H1)pdm09 Positive	A(H3) Positive	A(UnS) Positive	Total Flu A Positive	Total Flu B Positive	RSV Tested	RSV Positive	HPIV Tested	HPIV 1 Positive	HPIV 2 Positive	HPIV 3 Positive	HPIV 4 Positive	Other HPIV Positive	ADV Tested	ADV Positive	HMPV Tested	HMPV Positive	EV/RV Tested	EV/RV Positive	HCov Tested	HCov Positive
Newfoundland	15106	0	0	326	326	0	15104	230	15107	1	30	116	0	314	15114	53	15101	91	15168	2146	888	20
Prince Edward Island	2673	0	48	17	65	0	2673	261	2628	1	1	159	28	1	2673	73	2673	105	2673	627	2673	140
Nova Scotia	25238	0	2	417	419	8	25242	406	1912	0	4	43	31	0	1932	25	1932	55	1932	171	1932	48
New Brunswick	20141	0	111	384	495	0	12685	357	3529	1	10	40	29	0	3522	49	3529	47	3529	143	3438	19
<b>Atlantic</b>	<b>63158</b>	<b>0</b>	<b>161</b>	<b>1144</b>	<b>1305</b>	<b>8</b>	<b>55704</b>	<b>1254</b>	<b>23176</b>	<b>3</b>	<b>45</b>	<b>358</b>	<b>88</b>	<b>315</b>	<b>23241</b>	<b>200</b>	<b>23235</b>	<b>298</b>	<b>23302</b>	<b>3087</b>	<b>8931</b>	<b>227</b>
Région Nord-Est	35941	45	1	2193	2239	27	16245	1477	825	2	1	12	1	0	916	18	429	16	N.C.	N.C.	1260	24
Québec-Chaudière-Appalaches	14213	0	0	1429	1429	56	15283	1013	1832	1	18	15	19	0	5176	142	5073	134	N.C.	N.C.	3064	114
Centre-du-Québec	14464	0	3	1289	1292	11	12867	1106	1461	4	8	30	3	0	1461	43	1469	27	N.C.	N.C.	1454	31
Montréal-Laval	38191	0	5	1558	1563	10	32228	2516	10395	27	90	131	10	0	10394	581	10392	426	N.C.	N.C.	10715	260
Ouest du Québec	8799	0	6	653	659	0	8741	944	311	1	8	8	7	0	304	26	300	16	N.C.	N.C.	300	6
Montréal	6600	0	0	319	319	1	5557	398	0	0	0	0	0	0	0	0	0	0	N.C.	N.C.	0	0
<b>Province of Québec</b>	<b>118208</b>	<b>45</b>	<b>15</b>	<b>7441</b>	<b>7501</b>	<b>105</b>	<b>90921</b>	<b>7454</b>	<b>14824</b>	<b>35</b>	<b>125</b>	<b>196</b>	<b>40</b>	<b>0</b>	<b>18251</b>	<b>810</b>	<b>17663</b>	<b>619</b>	<b>N.C.</b>	<b>N.C.</b>	<b>16793</b>	<b>435</b>
P.H.O.L. - Ottawa	7170	2	81	1	84	0	7170	1442	7170	0	0	0	0	746	7170	313	7168	55	7170	2259	7168	296
EORLA	8699	0	0	175	175	0	8674	660	1307	0	3	29	13	0	1307	26	988	30	1307	209	965	32
P.H.O.L. - Kingston	1703	0	220	0	9	0	1710	147	1707	0	0	0	0	144	1708	30	1689	36	1707	384	1689	101
UHN / Mount Sinai Hospital	21945	0	0	57	57	5	21946	122	723	0	0	0	0	0	723	1	723	2	723	20	723	13
P.H.O.L. - Toronto	11961	2	388	2	128	0	11947	305	11947	0	0	0	0	445	11953	176	11937	232	11947	1327	11938	496
Sick Kids Hospital - Toronto	839	0	0	0	0	0	0	0	839	0	2	68	1	0	839	12	839	1	839	233	839	10
Sunnybrook & Women's College HSC	0	0	0	0	0	0	0	0	0	0	0	0	0	0	0	0	0	0	0	0	0	0
P.H.O.L. - Sault Ste. Marie	374	0	4	1	4	0	373	12	373	0	0	0	0	9	373	4	373	2	373	62	373	23
P.H.O.L. - Timmins	542	0	17	0	10	0	542	28	542	0	0	0	0	23	542	1	541	6	542	42	541	33
St. Joseph's - London	13285	0	0	73	73	0	13288	789	11731	0	0	7	0	97	11731	158	11731	113	11685	668	567	4
P.H.O.L. - London	4192	0	57	11	60	0	4191	469	4191	0	0	0	0	194	4191	99	4188	111	4191	535	4188	303
P.H.O.L. - Orillia	1135	0	8	1	9	0	1135	153	1135	0	0	0	0	75	1135	40	1132	72	1135	282	1132	81
P.H.O.L. - Thunder Bay	376	0	6	0	5	0	376	27	376	0	0	0	0	25	376	1	376	12	376	64	376	37
P.H.O.L. - Sudbury	392	0	6	0	6	0	392	12	392	0	0	0	0	12	392	2	392	7	392	37	392	14
P.H.O.L. - Hamilton	2196	0	25	2	23	0	2191	79	2191	0	0	0	0	77	2192	24	2191	59	2191	286	2191	117
P.H.O.L. - Peterborough	713	0	2	0	2	0	713	60	706	0	0	0	0	19	706	7	703	9	706	119	703	45
St. Joseph's - Hamilton	24329	0	4	237	241	1	24323	1651	24323	5	0	663	0	0	24323	234	24323	263	24323	2098	0	0
<b>Province of Ontario</b>	<b>99851</b>	<b>4</b>	<b>818</b>	<b>560</b>	<b>886</b>	<b>6</b>	<b>98971</b>	<b>5956</b>	<b>69653</b>	<b>5</b>	<b>5</b>	<b>767</b>	<b>14</b>	<b>1866</b>	<b>69661</b>	<b>1128</b>	<b>69294</b>	<b>1010</b>	<b>69607</b>	<b>8625</b>	<b>33785</b>	<b>1605</b>
Manitoba	58331	1	86	487	574	0	58331	1437	3902	3	15	81	32	0	3902	74	5336	65	3902	517	5142	102
Province of Saskatchewan	31094	2	477	297	776	0	31059	1762	6515	1	20	224	105	0	6515	137	6515	163	6515	1008	6504	314
Province of Alberta	94365	9	1825	849	2683	3	73434	3695	38652	8	176	921	270	0	38642	429	38628	627	38238	4457	38652	1560
<b>Prairies</b>	<b>183790</b>	<b>12</b>	<b>2388</b>	<b>1633</b>	<b>4033</b>	<b>3</b>	<b>162824</b>	<b>6894</b>	<b>49069</b>	<b>12</b>	<b>211</b>	<b>1226</b>	<b>407</b>	<b>0</b>	<b>49059</b>	<b>640</b>	<b>50479</b>	<b>855</b>	<b>48655</b>	<b>5982</b>	<b>50298</b>	<b>1976</b>
British Columbia	213470	15	957	7	1421	93	208309	9459	29475	13	38	1146	346	191	29475	606	29471	711	28902	4572	28920	998
Yukon	5484	1	5	2	14	7	5493	308	N.C.	N.C.	N.C.	N.C.	N.C.	N.C.	N.C.	N.C.	N.C.	N.C.	N.C.	N.C.	N.C.	N.C.
Northwest Territories	2098	0	206	1	207	0	2058	223	131	0	1	3	0	0	131	3	131	0	2010	250	131	1
Nunavut	16712	0	403	7	410	0	16710	429	N.C.	N.C.	N.C.	N.C.	N.C.	N.C.	N.C.	N.C.	N.C.	N.C.	N.C.	N.C.	N.C.	N.C.
<b>Territories</b>	<b>24294</b>	<b>1</b>	<b>614</b>	<b>10</b>	<b>631</b>	<b>7</b>	<b>24261</b>	<b>960</b>	<b>187</b>	<b>0</b>	<b>1</b>	<b>7</b>	<b>0</b>	<b>0</b>	<b>187</b>	<b>6</b>	<b>187</b>	<b>0</b>	<b>2066</b>	<b>263</b>	<b>170</b>	<b>2</b>
<b>CANADA</b>	<b>702771</b>	<b>77</b>	<b>4953</b>	<b>10795</b>	<b>15777</b>	<b>222</b>	<b>640990</b>	<b>31977</b>	<b>186384</b>	<b>68</b>	<b>425</b>	<b>3700</b>	<b>895</b>	<b>2372</b>	<b>189874</b>	<b>3390</b>	<b>190329</b>	<b>3493</b>	<b>172532</b>	<b>22529</b>	<b>138897</b>	<b>5243</b>

The data in the RVDSS report represent surveillance data available at the time of writing. Data not collected by reporting lab denoted by N.C.

Note: Included in the cumulative detections this season are 11 co-infections of influenza A and B (total of 22 detections) that are suspected to be associated with recent live attenuated influenza vaccine (LAIV) receipt. Co-infections known or reported to be associated with recent LAIV are removed by the submitting laboratory or by PHAC beginning in week 44 as they do not represent community transmission of seasonal influenza viruses.

The reporting laboratory previously listed as CHEO - Ottawa is now listed as EORLA to better reflect data submitted by this provider.

Specimens from Yukon (YT) are sent to reference laboratories in British Columbia and reported results reflect specimens identified as originating from YT.

Results from British Columbia comprise of specimens from the following sites: BC Children's and Women's Hospital, Children's and Women's Hospital Laboratory, Fraser Health Medical Microbiology Laboratory, Island Health, Providence Health Care, Powell River Hospital, St. Paul's Hospital, Vancouver General Hospital, Victoria General Hospital, BCCDC Public Health Laboratory, Interior Health Authority sites and Northern Health Authority sites.

Delays in the reporting of data may cause data to change retrospectively. Due to these delays, the sum of weekly report totals do not add up to cumulative totals.

For British Columbia, only data from subtyped influenza A specimens are included in the weekly number of influenza detections. The sum of A(H1N1)pdm09, A(H3), and A(UnS) positive results may not equal the sum of total Flu A positive results.

Due to different testing protocols of laboratories across Canada, influenza A subtype detection counts may not be included in total influenza A detection counts, as some subtype detections are not available through routine testing but are subsequently reported if further subtype testing is conducted. In these instances, subtype counts do not reflect influenza A detections intended to be captured by routine surveillance, and are excluded from total detections and percent positivity.

**Figure 2: Number of positive respiratory virus tests reported by participating laboratories in Canada by surveillance week**

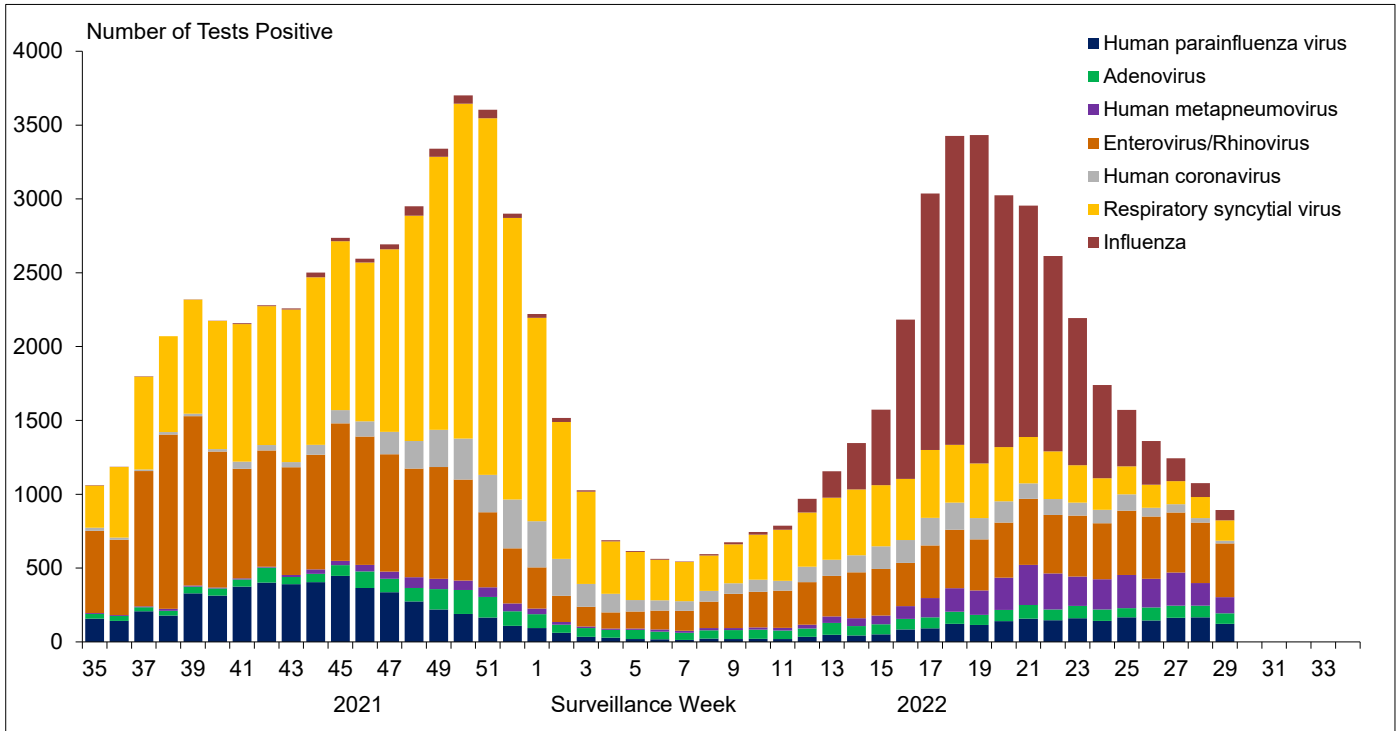


Figure 3: Positive Influenza (Flu) tests (%) in Canada by region by surveillance week

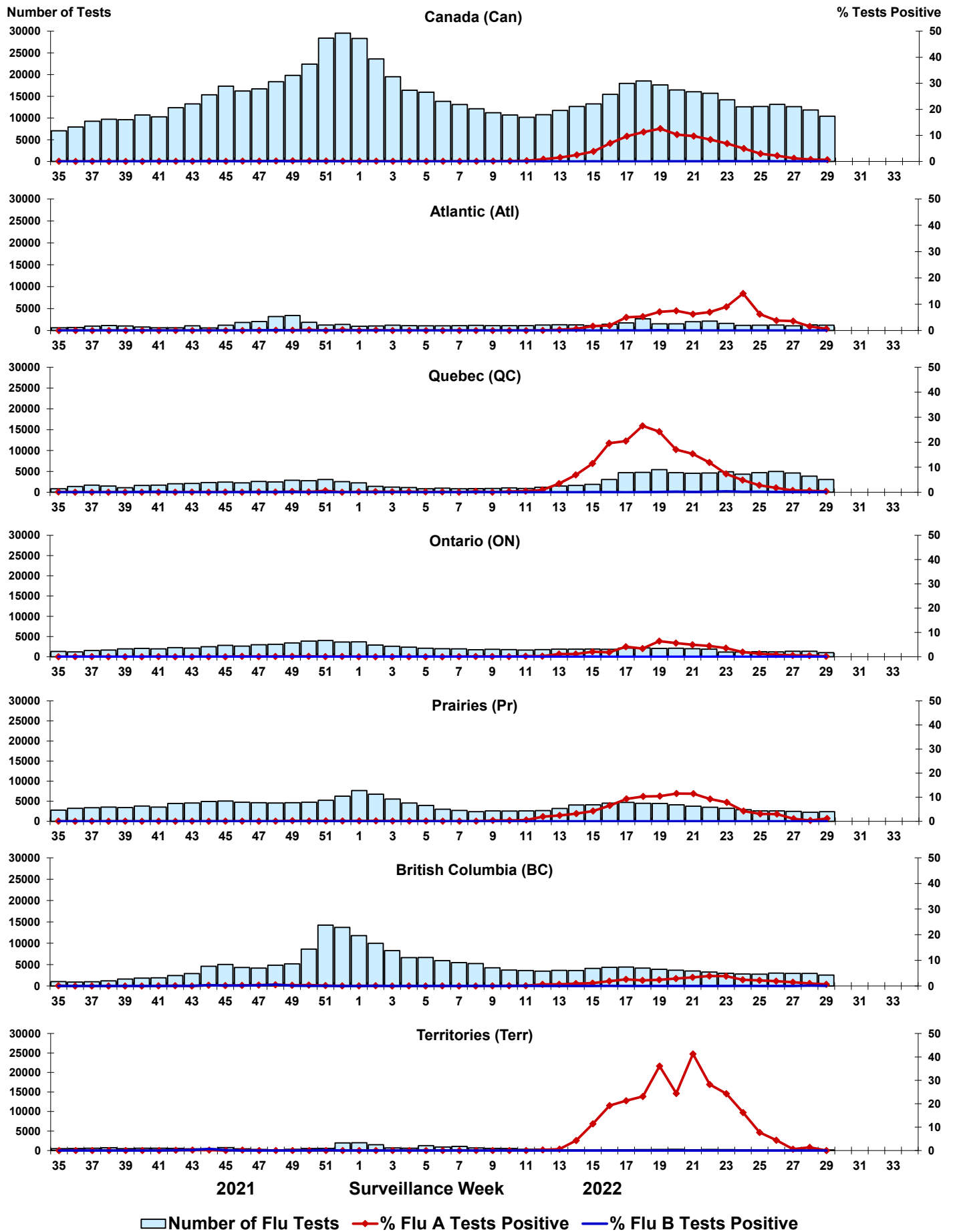


Figure 4: Positive Respiratory syncytial virus (RSV) tests (%) in Canada by region by surveillance week

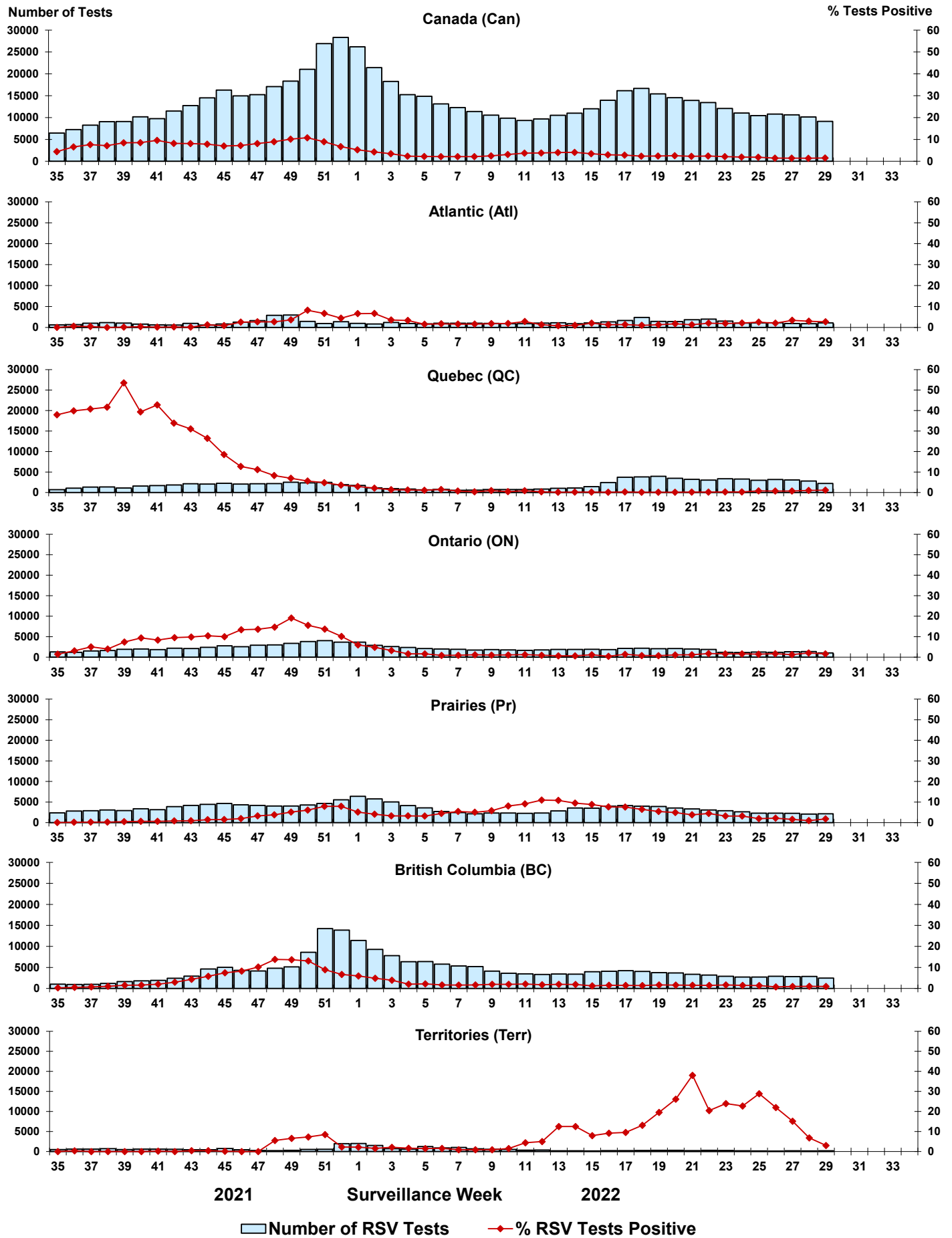


Figure 5: Positive Human parainfluenza virus (HPIV) tests (%) in Canada by region by surveillance week

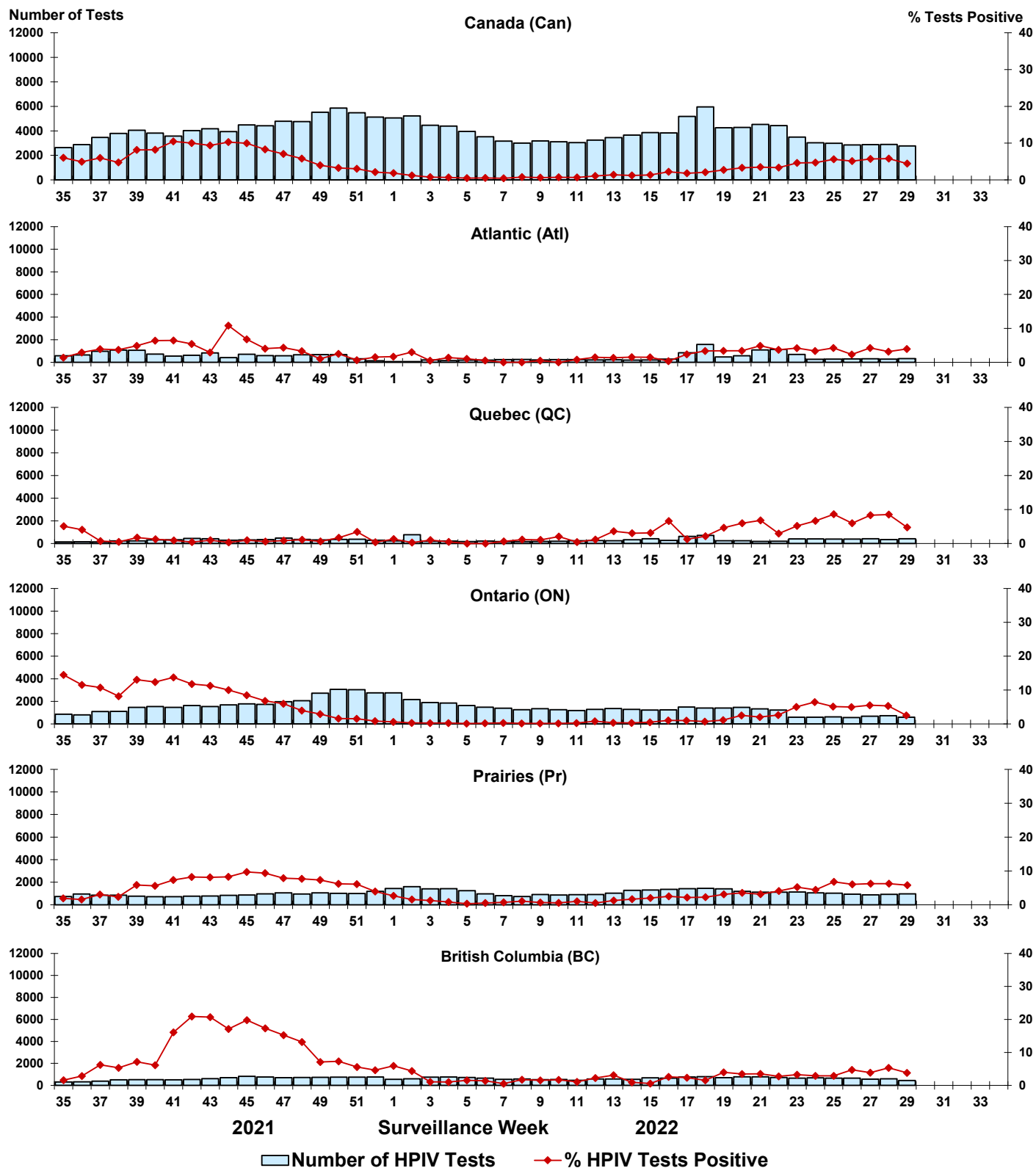




Figure 6: Positive Adenovirus (ADV) tests (%) in Canada by region by surveillance week

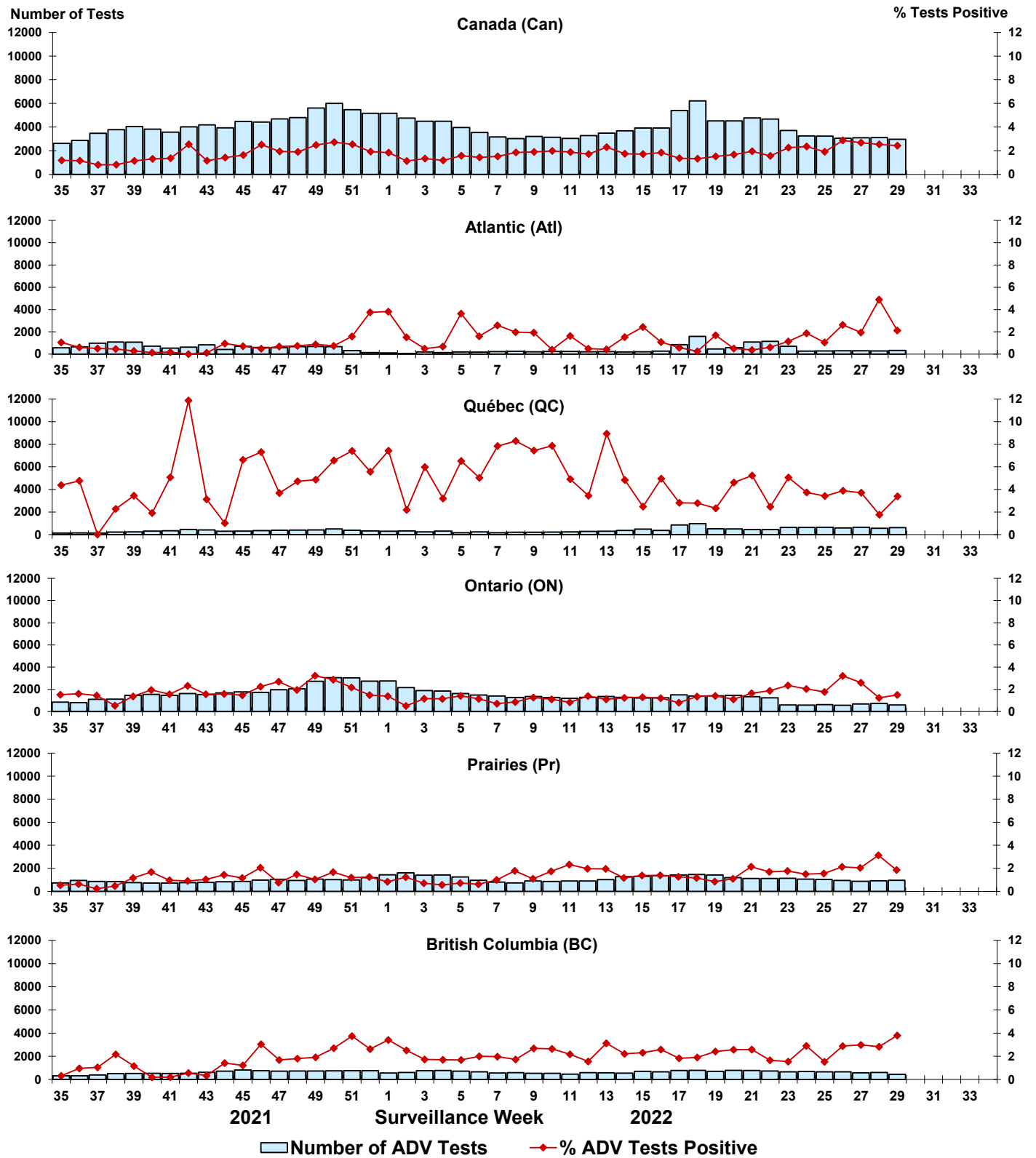


Figure 7: Positive Human metapneumovirus (HMPV) tests (%) in Canada by region by surveillance week

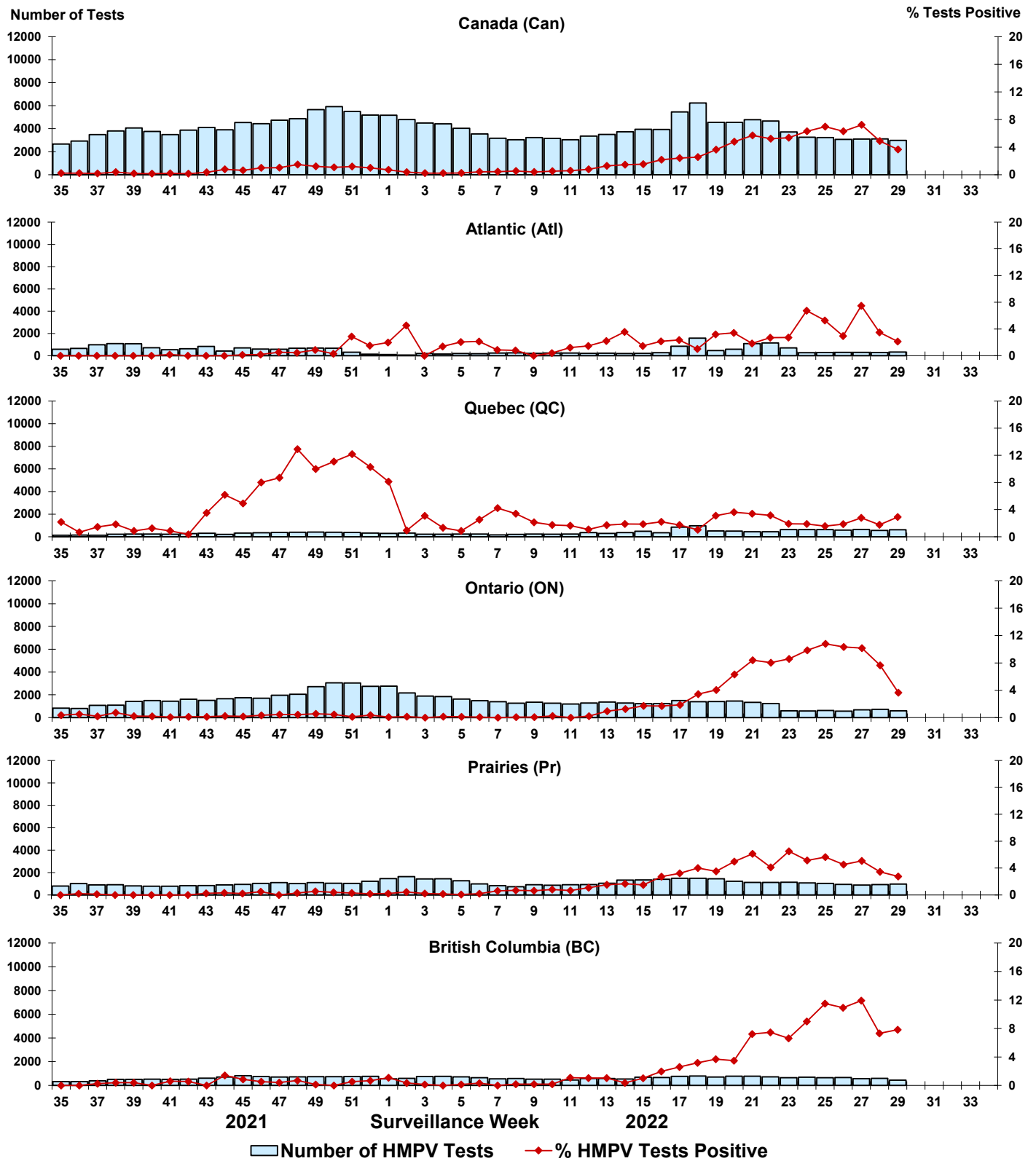


Figure 8: Positive Enterovirus/Rhinovirus (EV/RV) tests (%) in Canada by region by surveillance week

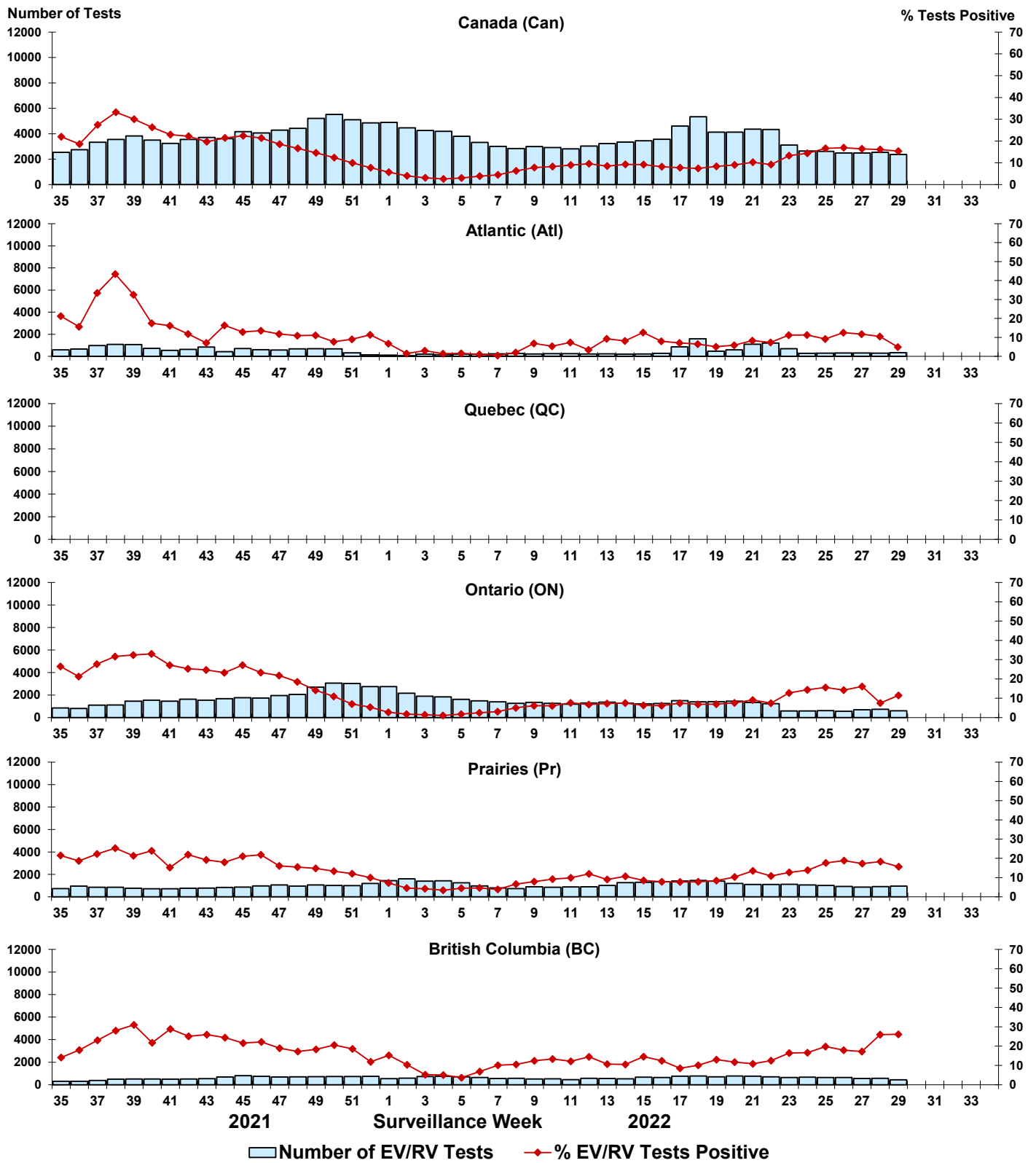


Figure 9: Positive Human coronavirus (HCoV) tests (%) in Canada by region by surveillance week

