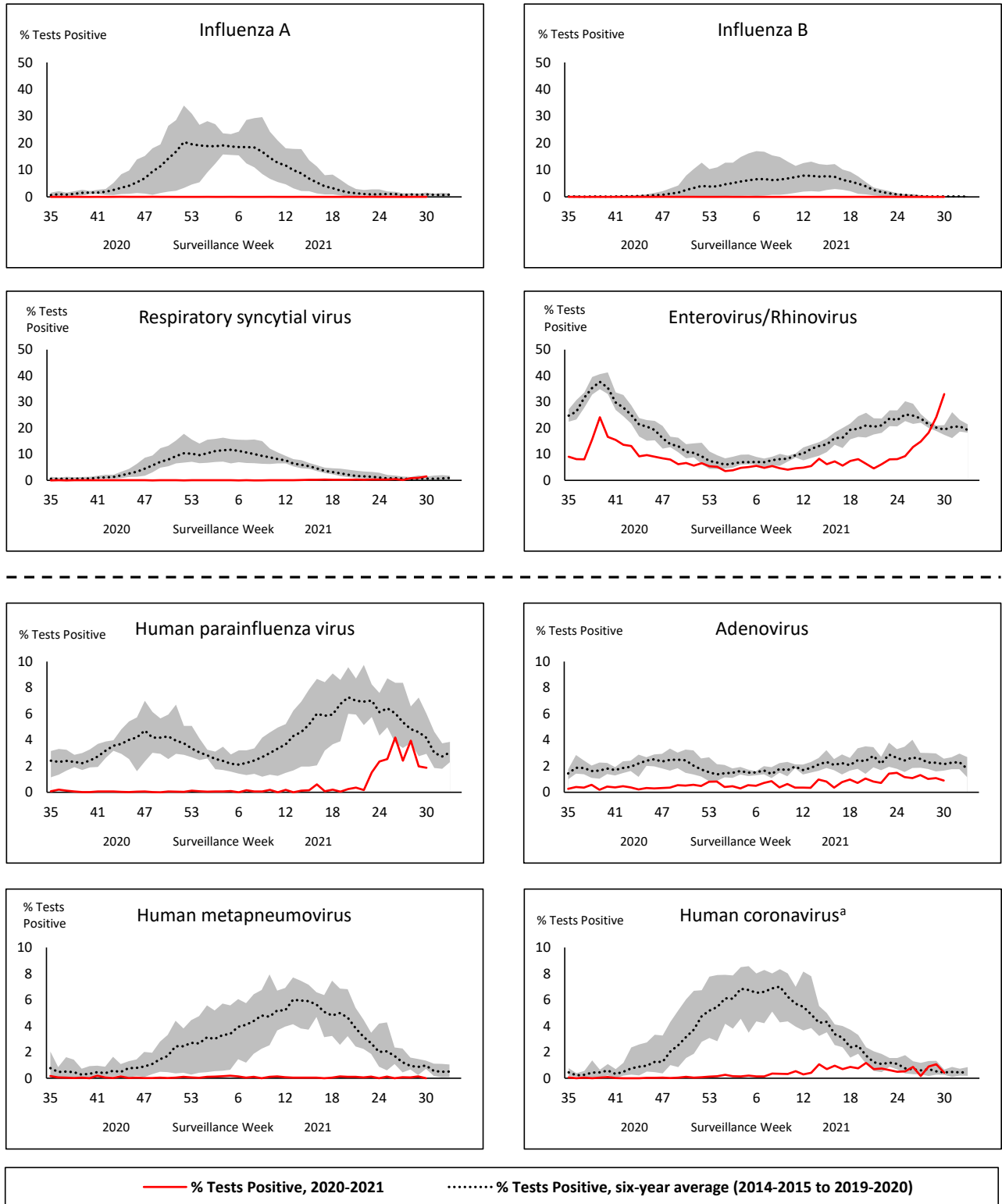


Respiratory Virus Report, Week 30 - ending July 31, 2021

The Respiratory Virus Detection Surveillance System collects data from select laboratories across Canada on the number of tests performed and the number of tests positive for influenza and other respiratory viruses. Data are reported on a weekly basis year-round to the Centre for Immunization and Respiratory Infectious Diseases (CIRID), Public Health Agency of Canada. These data are also summarized in the weekly FluWatch report.

In this Respiratory Virus Report, the number of detections of coronavirus reflects only seasonal human coronaviruses, not the novel pandemic coronavirus (SARS-CoV-2) that causes COVID-19. For information on COVID-19, see the [Coronavirus disease \(COVID-19\): Outbreak update](#).

Figure 1: Positive respiratory virus tests (%) reported by participating laboratories in Canada by surveillance week compared to average and range from 2014-2015 to 2019-2020 season



Shaded area represents the maximum and minimum % of respiratory virus tests positive reported by week from seasons 2014-2015 to 2019-2020

Note: Data from week 11 of the 2019-2020 season onwards is excluded from the historical comparison due to the COVID-19 pandemic

Note: % Tests Positive scale changes across the dashed line

^a Human coronavirus excludes human coronaviruses SARS-CoV, MERS-CoV and SARS-CoV-2; Includes seasonal human coronaviruses HCoV-229E, HCoV-OC43, HCoV-NL63, HCoV-HKU1.

Table 1: Respiratory virus detections for the week ending July 31, 2021 (surveillance week 2021-30)

Reporting Laboratory	Flu Tested	A(H1)pdm09 Positive	A(H3) Positive	A(UnS) Positive	Total Flu A Positive	Total Flu B Positive	RSV Tested	RSV Positive	HPIV Tested	HPIV 1 Positive	HPIV 2 Positive	HPIV 3 Positive	HPIV 4 Positive	Other HPIV Positive	ADV Tested	ADV Positive	HMPV Tested	HMPV Positive	EV/RV Tested	EV/RV Positive	HCoV Tested	HCoV Positive
Newfoundland	N.R.	N.R.	N.R.	N.R.	N.R.	N.R.	N.R.	N.R.	N.R.	N.R.	N.R.	N.R.	N.R.	N.R.	N.R.	N.R.	N.R.	N.R.	N.R.	N.R.	N.C.	N.C.
Prince Edward Island	38	0	0	0	0	0	38	0	38	0	0	0	0	0	38	1	38	0	38	13	38	0
Nova Scotia	67	0	0	0	0	0	67	0	34	0	0	0	0	0	34	1	34	0	34	2	34	0
New Brunswick	148	0	0	0	0	0	139	0	99	0	0	0	0	0	99	0	99	0	99	0	99	0
Atlantic	253	0	0	0	0	0	244	0	171	0	0	0	0	0	171	2	171	0	171	15	171	0
Région Nord-Est	405	0	0	0	0	0	19	0	0	0	0	0	0	0	0	0	0	0	N.C.	N.C.	0	0
Québec-Chaudière-Appalaches	30	0	0	0	0	0	32	2	29	0	0	3	0	0	29	0	29	0	N.C.	N.C.	29	0
Centre-du-Québec	5	0	0	0	0	0	5	0	11	0	0	0	0	0	11	1	11	0	N.C.	N.C.	11	0
Montréal-Laval	415	0	0	0	0	0	415	54	135	0	0	17	0	0	135	3	135	0	N.C.	N.C.	135	4
Ouest du Québec	17	0	0	0	0	0	17	0	0	0	0	0	0	0	0	0	0	0	N.C.	N.C.	0	0
Montérégie	3	0	0	0	0	0	3	0	0	0	0	0	0	0	0	0	0	0	N.C.	N.C.	0	0
Province of Québec	875	0	0	0	0	0	491	56	175	0	0	20	0	0	175	4	175	0	N.C.	N.C.	175	4
P.H.O.L. - Ottawa	9	0	0	0	0	0	9	0	9	0	0	0	0	0	9	0	9	0	9	3	9	0
CHEO - Ottawa	61	0	0	0	0	0	61	0	21	0	0	2	0	0	21	0	21	0	21	4	21	0
P.H.O.L. - Kingston	21	0	0	0	0	0	21	0	21	0	0	0	0	1	21	0	20	0	21	11	20	0
UHN / Mount Sinai Hospital	417	0	0	0	0	0	417	0	61	0	0	0	0	0	61	1	61	0	61	0	61	0
P.H.O.L. - Toronto	101	0	0	0	0	0	101	0	101	0	0	0	0	0	101	2	101	0	101	34	101	0
Sick Kids Hospital - Toronto	N.R.	N.R.	N.R.	N.R.	N.R.	N.R.	N.R.	N.R.	N.R.	N.R.	N.R.	N.R.	N.R.	N.R.	N.R.	N.R.	N.R.	N.R.	N.R.	N.R.	N.R.	N.R.
Sunnybrook & Women's College HSC	N.R.	N.R.	N.R.	N.R.	N.R.	N.R.	N.R.	N.R.	N.R.	N.R.	N.R.	N.R.	N.R.	N.R.	N.R.	N.R.	N.R.	N.R.	N.R.	N.R.	N.R.	N.R.
P.H.O.L. - Sault Ste. Marie	0	0	0	0	0	0	0	0	0	0	0	0	0	0	0	0	0	0	0	0	0	0
P.H.O.L. - Timmins	0	0	0	0	0	0	0	0	0	0	0	0	0	0	0	0	0	0	0	0	0	0
St. Joseph's - London	N.R.	N.R.	N.R.	N.R.	N.R.	N.R.	N.R.	N.R.	N.R.	N.R.	N.R.	N.R.	N.R.	N.R.	N.R.	N.R.	N.R.	N.R.	N.R.	N.R.	N.R.	N.R.
P.H.O.L. - London	11	0	0	0	0	0	11	0	11	0	0	0	0	0	11	0	11	0	11	0	11	0
P.H.O.L. - Orillia	6	0	0	0	0	0	6	0	6	0	0	0	0	0	6	0	6	0	6	4	6	0
P.H.O.L. - Thunder Bay	0	0	0	0	0	0	0	0	0	0	0	0	0	0	0	0	0	0	0	0	0	0
P.H.O.L. - Sudbury	13	0	0	0	0	0	13	0	13	0	0	0	0	0	13	1	13	0	13	1	13	0
P.H.O.L. - Hamilton	14	0	0	0	0	0	14	0	14	0	0	0	0	0	14	0	14	0	14	1	14	0
P.H.O.L. - Peterborough	12	0	0	0	0	0	12	0	12	0	0	0	0	0	12	0	12	0	12	2	12	0
St. Joseph's - Hamilton	N.R.	N.R.	N.R.	N.R.	N.R.	N.R.	N.R.	N.R.	N.R.	N.R.	N.R.	N.R.	N.R.	N.R.	N.R.	N.R.	N.R.	N.R.	N.R.	N.R.	N.R.	N.R.
Province of Ontario	665	0	0	0	0	0	665	0	269	0	0	2	0	1	269	4	268	0	269	60	268	0
Province of Manitoba	898	0	0	0	0	0	898	0	10	0	0	0	0	0	10	0	48	0	10	6	48	1
Province of Saskatchewan	44	0	0	0	0	0	44	0	52	0	0	0	0	0	52	0	52	0	52	8	52	1
Province of Alberta	1644	0	0	0	0	0	747	0	747	2	0	5	0	0	747	3	747	0	747	363	747	1
Prairies	2586	0	0	0	0	0	1689	0	809	2	0	5	0	0	809	3	847	0	809	377	847	3
British Columbia	499	0	0	0	0	0	498	0	232	0	0	0	1	0	232	2	232	0	232	37	229	0
Yukon	93	0	0	0	0	0	93	0	N.C.	N.C.	N.C.	N.C.	N.C.	N.C.	N.C.	N.C.	N.C.	N.C.	N.C.	N.C.	N.C.	N.C.
Northwest Territories	5	0	0	0	0	0	4	0	4	0	0	0	0	0	4	0	4	0	4	1	4	0
Nunavut	0	0	0	0	0	0	0	0	0	0	0	0	0	0	0	0	0	0	0	0	0	0
Territories	98	0	0	0	0	0	97	0	4	0	0	0	0	0	4	0	4	0	4	1	4	0
CANADA	4976	0	0	0	0	0	3684	56	1660	2	0	27	1	1	1660	15	1697	0	1485	490	1694	7

The data in the RVDSS report represent surveillance data available at the time of writing. Data missing from the current week are denoted by N.R. Data not collected by reporting lab denoted by N.C.

Specimens from Yukon (YT), Northwest Territories (NT) and Nunavut (NU) are sent to reference laboratories in other provinces and reported results reflect specimens identified as originating from YT, NT or NU.

Results from British Columbia comprise of specimens from the following sites: BC Children's and Women's Hospital, Children's and Women's Hospital Laboratory, Fraser Health Medical Microbiology Laboratory, Island Health, Providence Health Care, Powell River Hospital, St. Paul's Hospital, Vancouver General Hospital, Victoria General Hospital, BCCDC Public Health Laboratory, Interior Health Authority sites and Northern Health Authority sites.

Delays in the reporting of data may cause data to change retrospectively.

Influenza co-detections may cause the sum of A(H1)pdm09, A(H3), and A(UnS) positive results to exceed the sum of Total Flu A Positive results.

Table 2: Cumulative respiratory virus detections from August 23, 2020 to July 31, 2021 (surveillance week 2020-35 to 2021-30)

Reporting Laboratory	Flu Tested	A(H1)pdm09 Positive	A(H3) Positive	A(UnS) Positive	Total Flu A Positive	Total Flu B Positive	RSV Tested	RSV Positive	HPIV Tested	HPIV 1 Positive	HPIV 2 Positive	HPIV 3 Positive	HPIV 4 Positive	Other HPIV Positive	ADV Tested	ADV Positive	HMPV Tested	HMPV Positive	EV/RV Tested	EV/RV Positive	HCoV Tested	HCoV Positive
Newfoundland	14073	0	0	0	0	0	14072	10	14072	1	0	3	0	0	14085	57	13485	2	13455	2211	N.C.	N.C.
Prince Edward Island	4259	0	0	0	0	0	4259	4	4255	3	0	0	1	0	4255	44	4255	0	4255	505	4255	2
Nova Scotia	8716	0	0	0	0	0	8729	0	1539	0	10	0	1	0	1539	17	1539	1	1539	91	1567	0
New Brunswick	54896	0	0	0	0	1	20778	0	1804	0	0	0	0	0	1795	11	1795	0	1795	64	1750	2
Atlantic	81944	0	0	0	0	1	47838	14	21670	4	10	3	2	0	21674	129	21074	3	21044	2871	7572	4
Région Nord-Est	10685	0	0	0	0	0	1274	1	8	0	0	0	0	0	8	1	8	0	N.C.	N.C.	8	0
Québec-Chaudière-Appalaches	951	0	0	1	1	0	1074	5	925	0	0	49	1	0	927	52	922	0	N.C.	N.C.	905	31
Centre-du-Québec	982	0	0	0	0	0	990	2	488	0	0	17	0	0	486	27	488	0	N.C.	N.C.	485	17
Montréal-Laval	12939	0	0	0	0	0	11982	350	5437	88	0	160	0	0	5491	200	5421	4	N.C.	N.C.	5421	143
Ouest du Québec	2646	0	0	0	0	0	2537	1	0	0	0	0	0	0	0	0	0	0	N.C.	N.C.	0	0
Montérégie	1274	0	0	0	0	0	1274	3	0	0	0	0	0	0	0	0	0	0	N.C.	N.C.	0	0
Province of Québec	29477	0	0	1	1	0	19131	362	6858	88	0	226	1	0	6912	280	6839	4	N.C.	N.C.	6819	191
P.H.O.L. - Ottawa	682	0	0	0	0	0	682	1	571	0	0	0	0	0	571	0	570	0	571	29	570	2
CHEO - Ottawa	5542	0	0	1	1	1	5139	5	1169	0	0	5	0	0	1044	17	1044	1	1044	118	1044	7
P.H.O.L. - Kingston	942	0	0	1	1	0	942	0	616	0	0	0	0	1	616	5	608	0	616	120	608	0
UHN / Mount Sinai Hospital	17334	2	0	2	4	1	17265	7	10772	3	2	5	8	0	9146	11	10732	10	10529	105	8568	7
P.H.O.L. - Toronto	7351	0	0	0	0	0	7348	3	6316	0	0	0	0	4	6317	22	6314	3	6316	215	6314	6
Sick Kids Hospital - Toronto	1380	0	0	0	0	0	0	0	1380	0	0	1	0	0	1380	21	1380	0	1380	134	1380	1
Sunnybrook & Women's College HSC	0	0	0	0	0	0	0	0	0	0	0	0	0	0	0	0	0	0	0	0	0	0
P.H.O.L. - Sault Ste. Marie	179	0	0	2	2	0	177	0	103	0	0	0	0	0	103	0	103	0	103	6	103	0
P.H.O.L. - Timmins	635	0	0	0	0	0	635	0	175	0	0	0	0	0	175	1	174	0	175	32	174	0
St. Joseph's - London	218	0	0	0	0	0	218	0	55	0	0	0	0	0	55	0	55	0	91	8	36	0
P.H.O.L. - London	2029	1	0	5	6	2	2019	0	1357	0	0	0	0	2	1357	2	1351	0	1357	127	1351	3
P.H.O.L. - Orillia	430	0	0	1	1	0	428	0	210	0	0	0	0	0	210	2	210	0	210	16	210	0
P.H.O.L. - Thunder Bay	429	0	0	0	0	0	429	0	409	0	0	0	0	0	410	3	409	0	409	142	409	0
P.H.O.L. - Sudbury	547	0	0	0	0	0	545	1	366	0	0	0	0	4	366	4	366	0	366	32	366	6
P.H.O.L. - Hamilton	1601	0	1	0	1	0	1545	1	1288	0	0	0	0	0	1288	2	1288	0	1288	104	1288	0
P.H.O.L. - Peterborough	587	0	0	1	1	0	541	0	428	0	0	0	0	0	428	0	427	0	428	28	427	0
St. Joseph's - Hamilton	10624	0	0	0	0	0	10624	3	10624	0	0	4	0	0	10624	24	10624	0	10624	486	0	0
Province of Ontario	50510	3	1	13	17	4	48537	21	35839	3	2	15	8	11	34090	114	35655	14	35507	1702	22848	32
Manitoba	67727	0	1	3	4	2	67717	69	2938	0	1	3	0	0	2938	20	4175	1	2938	187	4175	8
Province of Saskatchewan	172170	0	0	1	1	0	27303	4	2229	0	0	1	1	0	2229	18	2229	4	2229	240	2229	15
Province of Alberta	137947	0	0	1	1	0	81644	0	81644	4	20	12	10	0	81644	173	81644	11	81644	7673	81644	37
Prairies	377844	0	1	5	6	2	176664	73	86811	4	21	16	11	0	86811	211	88048	16	86811	8100	88048	60
British Columbia	93018	3	8	1	10	8	92517	6	20969	2	4	1	15	6	21515	140	21144	70	20928	1739	16763	27
Yukon	7711	0	0	8	8	7	7620	4	N.C.	N.C.	N.C.	N.C.	N.C.	N.C.	N.C.	N.C.	N.C.	N.C.	N.C.	N.C.	N.C.	N.C.
Northwest Territories	1229	0	0	0	0	0	1171	0	1171	0	0	0	1	0	1171	12	1171	1	1171	330	1171	1
Nunavut	1128	0	0	0	0	0	1104	0	1104	3	1	0	0	0	1104	25	1104	5	1104	283	192	0
Territories	10068	0	0	8	8	7	9895	4	2275	3	1	0	1	0	2275	37	2275	6	2275	613	1363	1
CANADA	642861	6	10	28	42	22	394582	480	174422	104	38	261	38	17	173277	911	175035	113	166565	15025	143413	315

The data in the RVDSS report represent surveillance data available at the time of writing. Data not collected by reporting lab denoted by N.C.

Specimens from Yukon (YT), Northwest Territories (NT) and Nunavut (NU) are sent to reference laboratories in other provinces and reported results reflect specimens identified as originating from YT, NT or NU.

Results from British Columbia comprise of specimens from the following sites: BC Children's and Women's Hospital, Children's and Women's Hospital Laboratory, Fraser Health Medical Microbiology Laboratory, Island Health, Providence Health Care, Powell River Hospital, St. Paul's Hospital, Vancouver General Hospital, Victoria General Hospital, BCCDC Public Health Laboratory, Interior Health Authority sites and Northern Health Authority sites.

Delays in the reporting of data may cause data to change retrospectively. Due to these delays, the sum of weekly report totals do not add up to cumulative totals.

Influenza co-detections may cause the sum of A(H1N1)pdm09, A(H3), and A(UnS) positive results to exceed the sum of Total Flu A Positive results.

Figure 2: Number of positive respiratory virus tests reported by participating laboratories in Canada by surveillance week

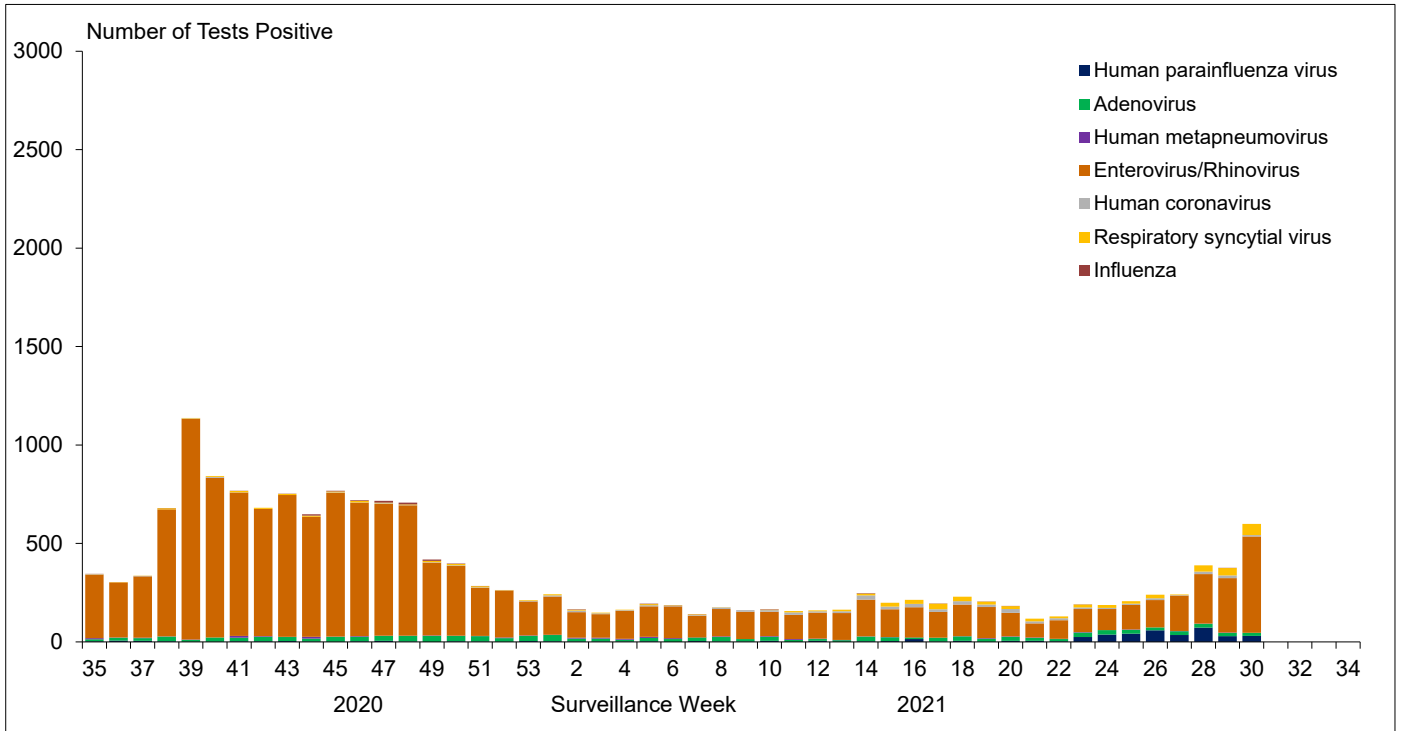


Figure 3: Positive Influenza (Flu) tests (%) in Canada by region by surveillance week

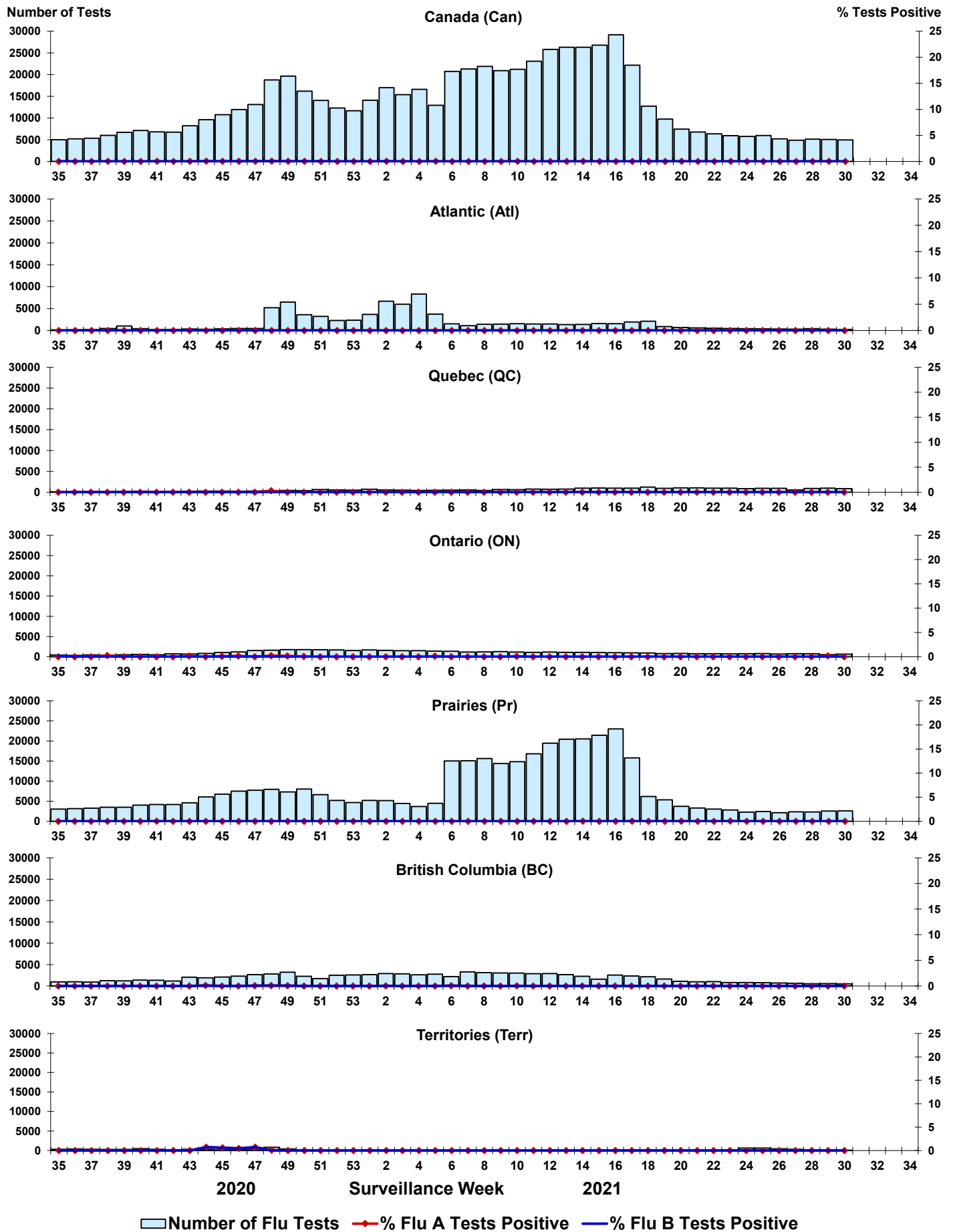


Figure 4: Positive Respiratory syncytial virus (RSV) tests (%) in Canada by region by surveillance week

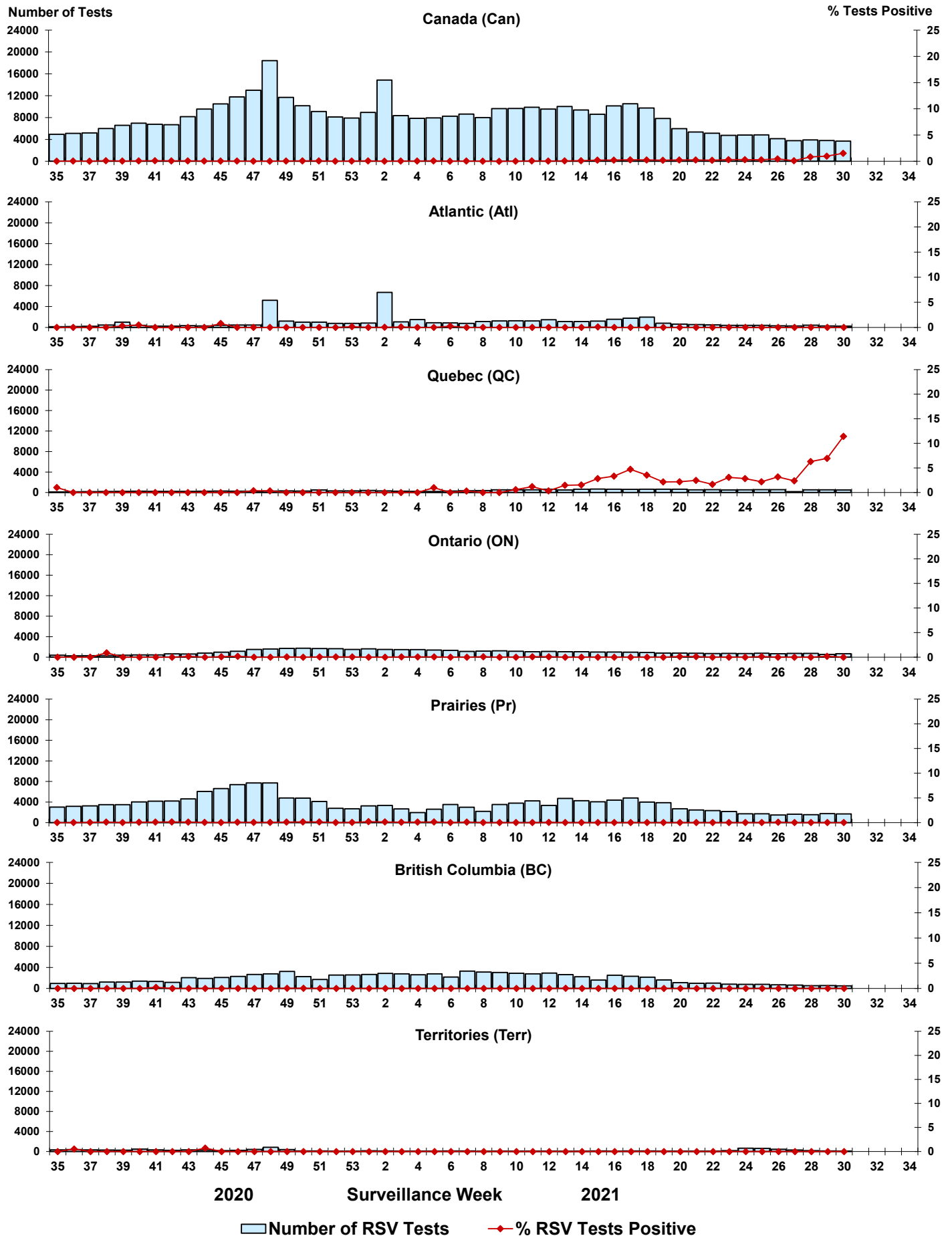


Figure 5: Positive Human parainfluenza virus (HPIV) tests (%) in Canada by region by surveillance week

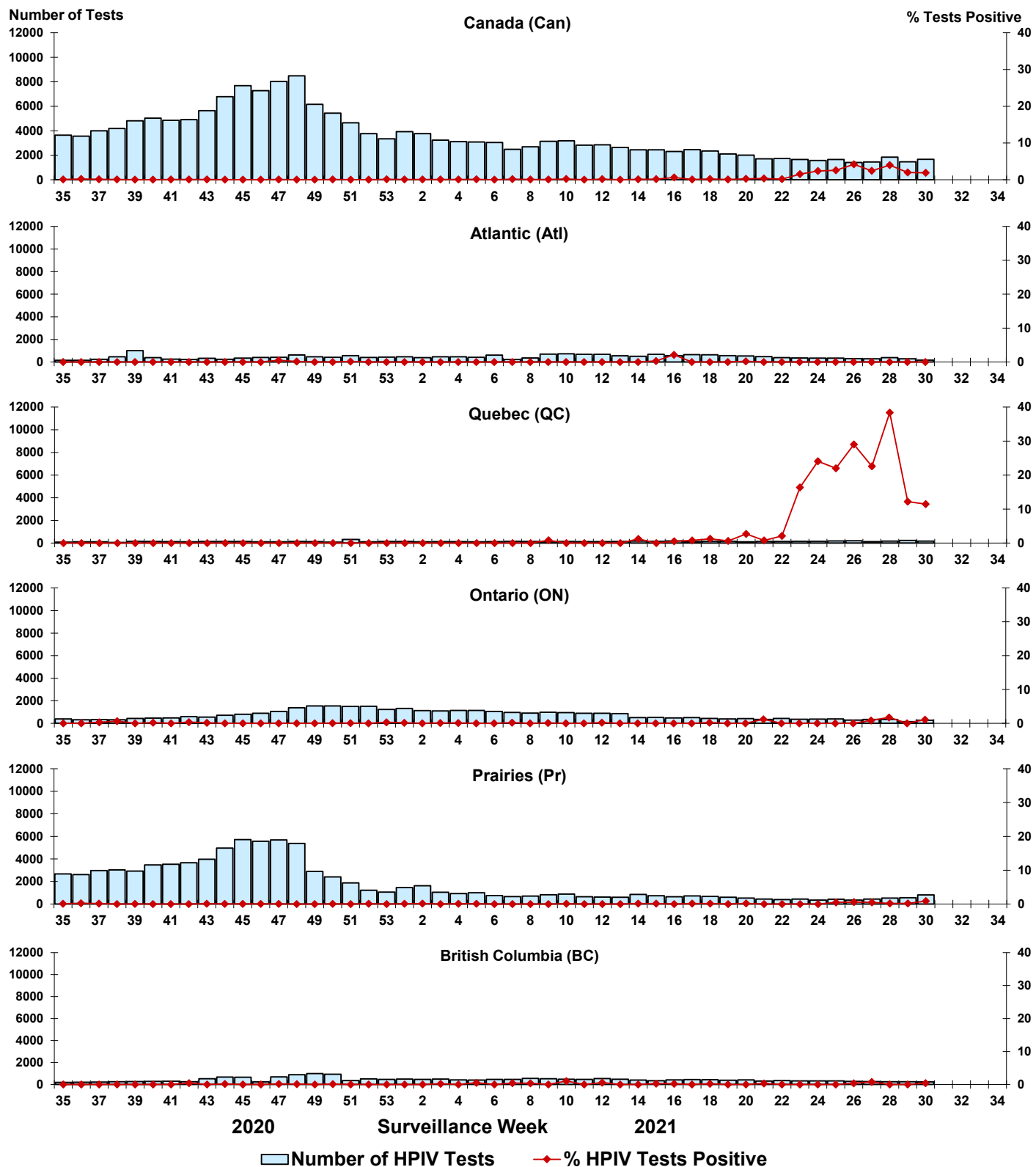


Figure 6: Positive Adenovirus (ADV) tests (%) in Canada by region by surveillance week

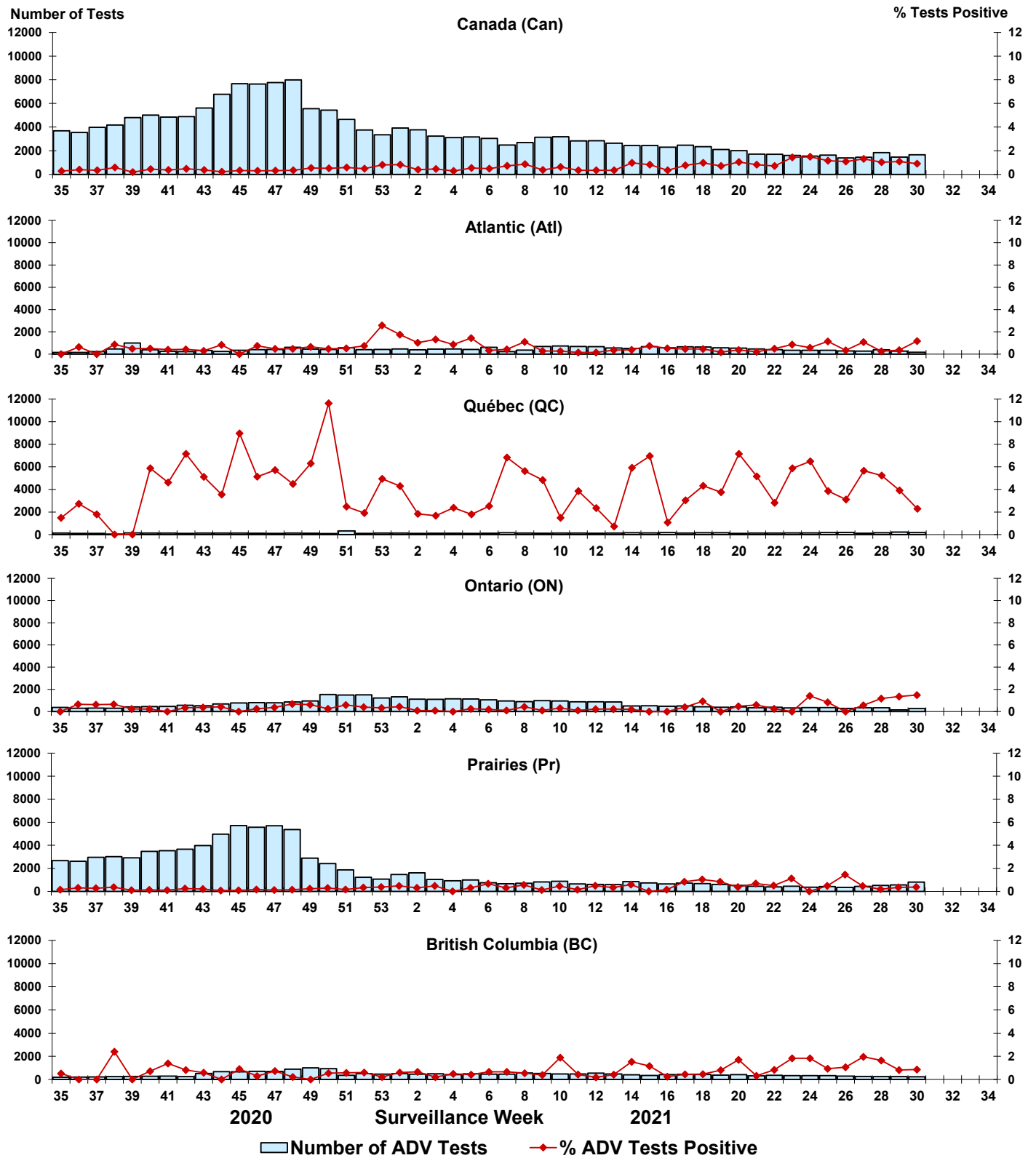


Figure 7: Positive Human metapneumovirus (HMPV) tests (%) in Canada by region by surveillance week

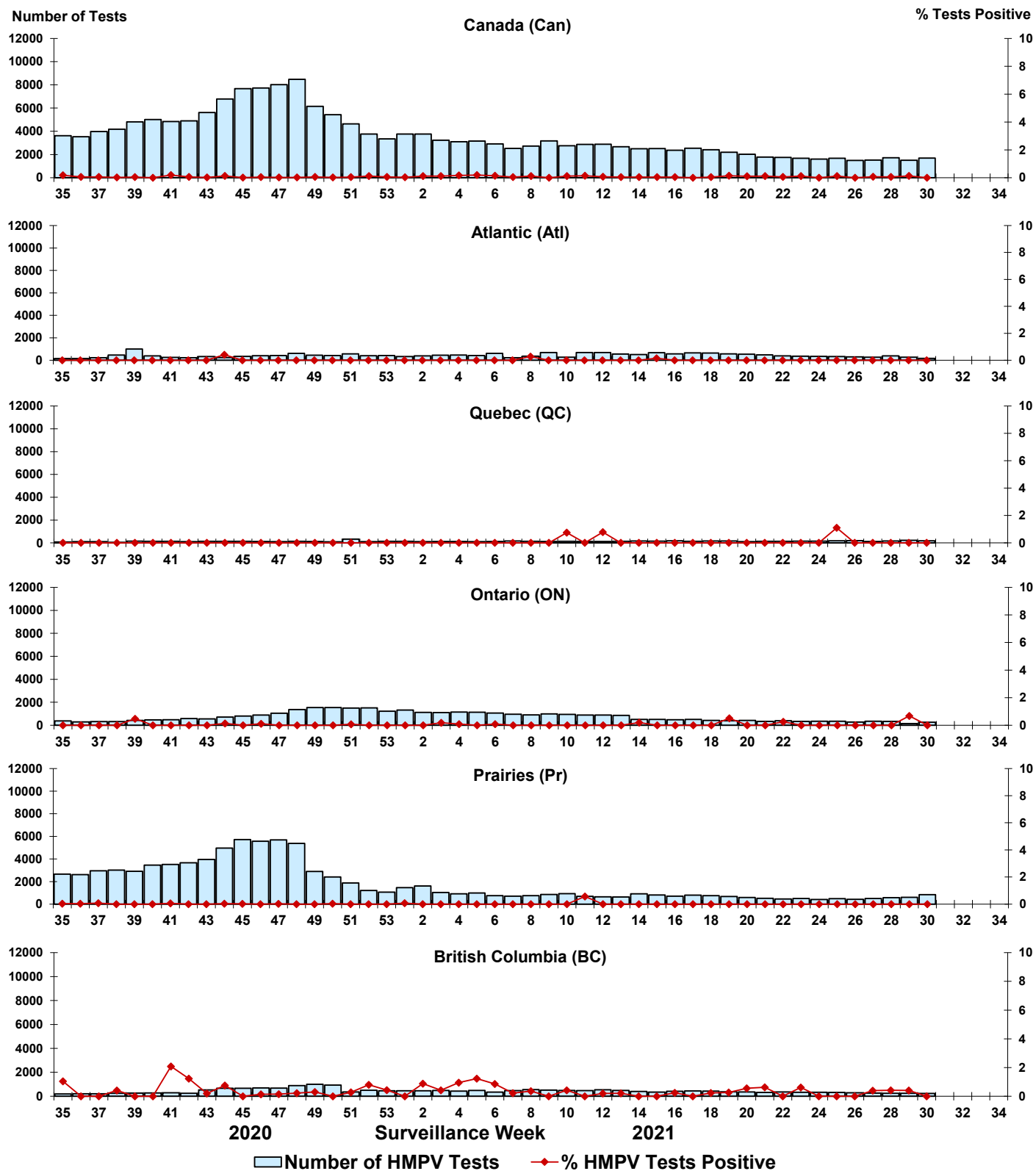


Figure 8: Positive Enterovirus/Rhinovirus (EV/RV) tests (%) in Canada by region by surveillance week

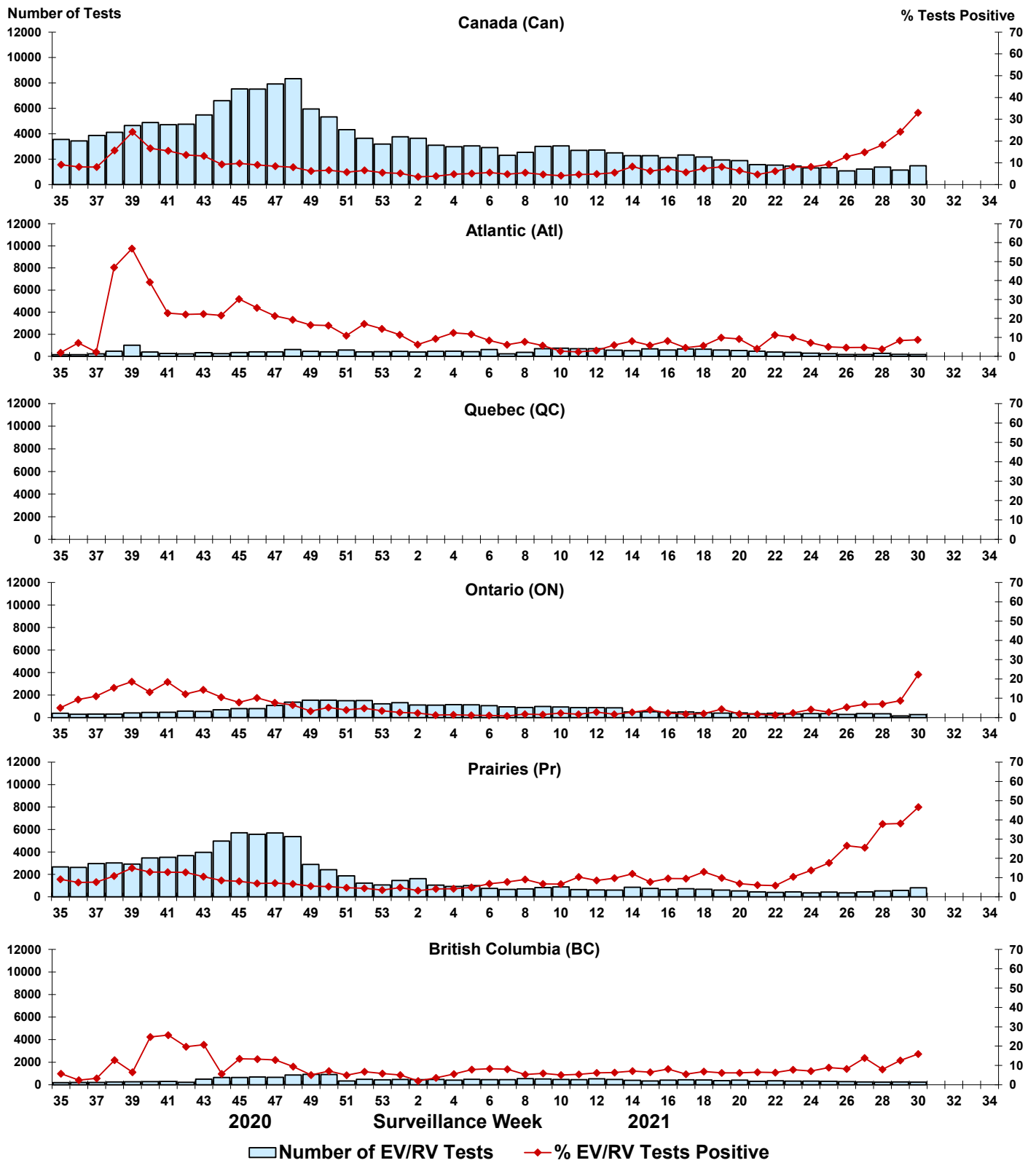
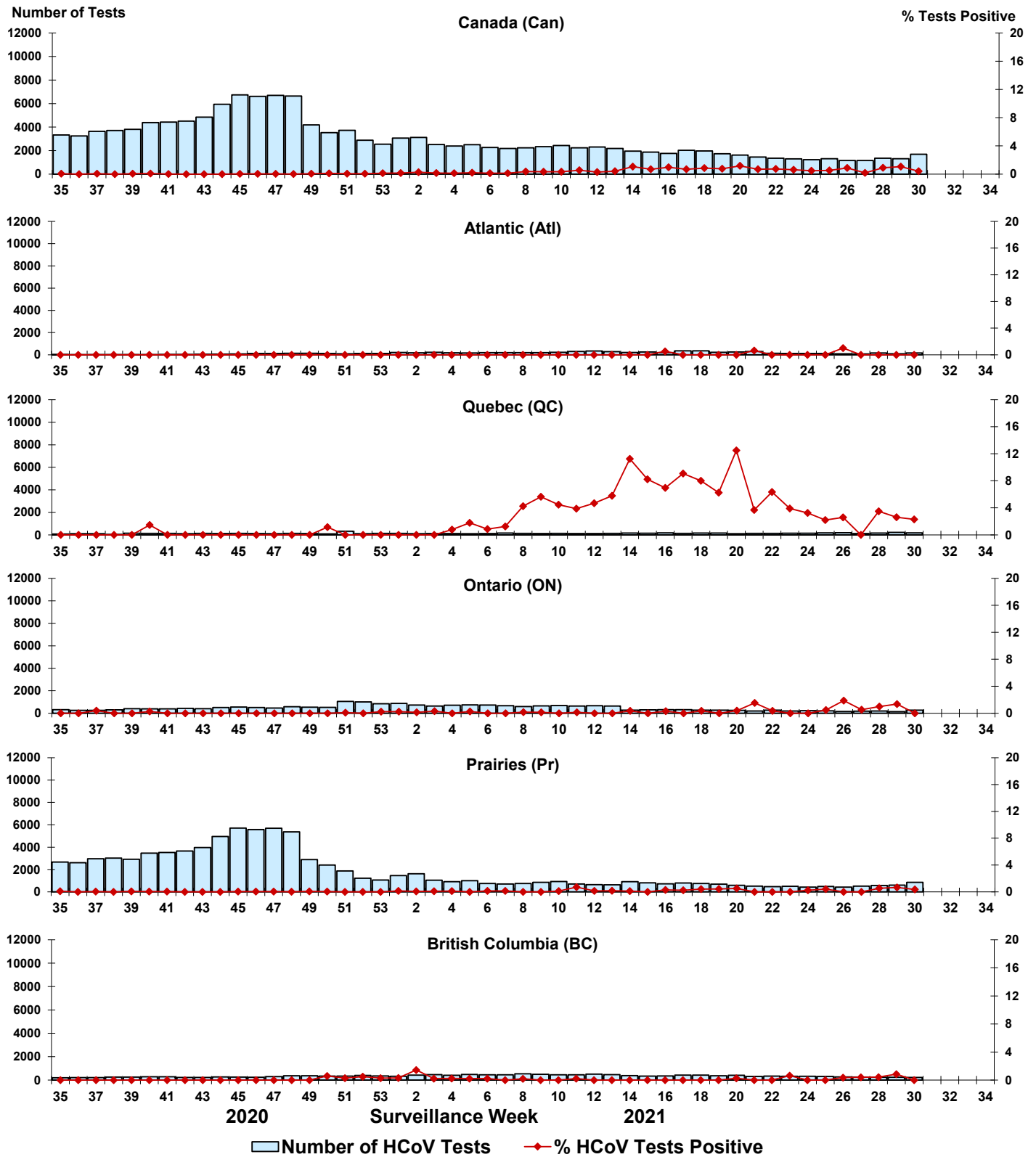


Figure 9: Positive Human coronavirus (HCoV) tests (%) in Canada by region by surveillance week



Abbreviations:

Flu: Influenza

A(H1)pdm09: Influenza A(H1N1)pdm09

A(H3): Influenza A(H3N2)

A(UnS): Influenza A(Unsubtyped)

RSV: Respiratory syncytial virus

HPIV: Human parainfluenza virus

HMPV: Human metapneumovirus

ADV: Adenovirus

EV/RV: Enterovirus/Rhinovirus

HCoV: Human coronavirus

Atl: Atlantic Canada

BC: British Columbia

Can: Canada

CHEO: Children's Hospital of Eastern Ontario

HSC: Health Sciences Centre

N.C.: Data not collected

N.R.: Data not reported for current week

ON: Ontario

PR: Prairies

P.H.O.L.: Public Health Ontario Laboratory

QC: Quebec

Terr: Territories of Canada

UHN: University Health Network