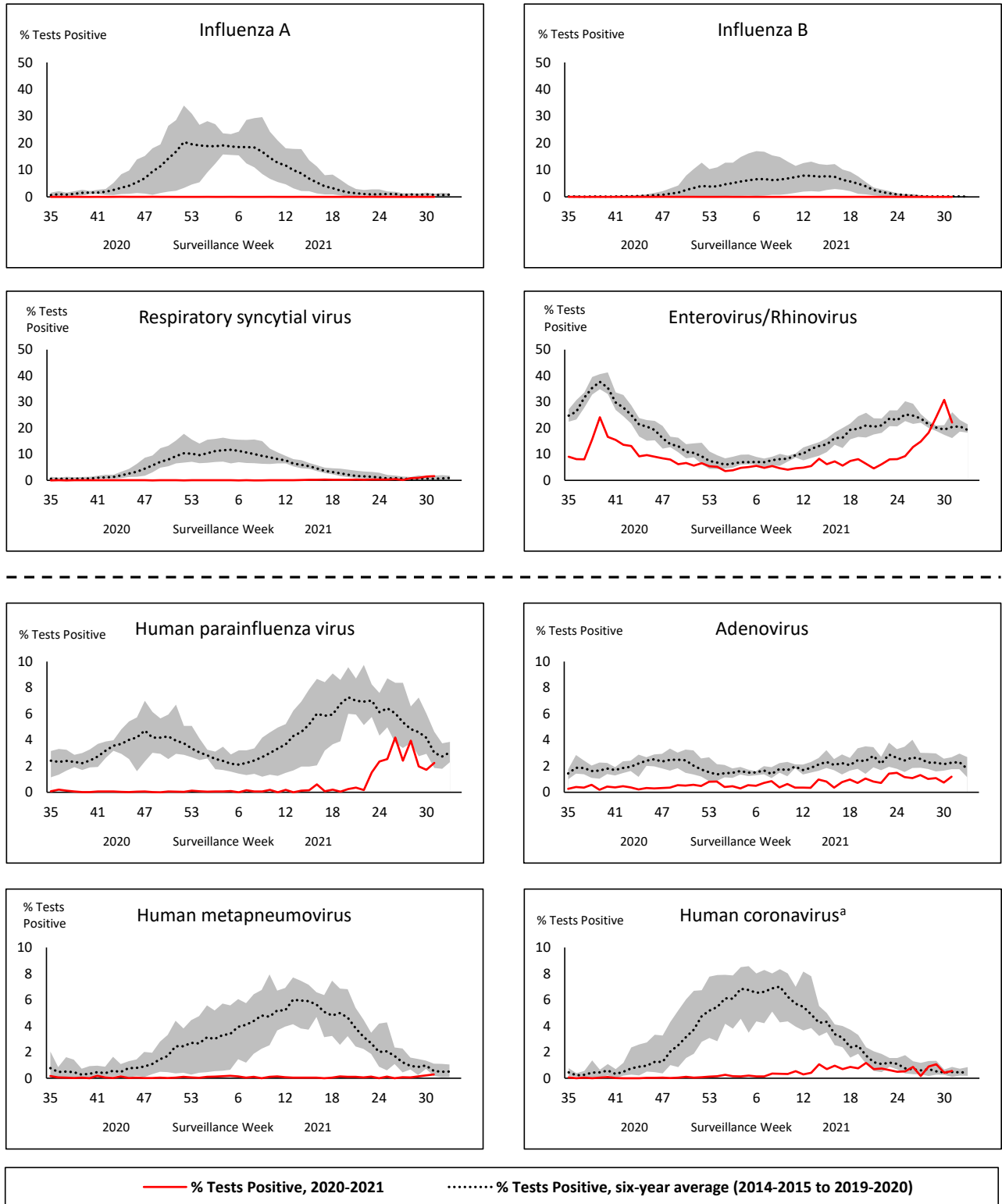


## Respiratory Virus Report, Week 31 - ending August 7, 2021

The Respiratory Virus Detection Surveillance System collects data from select laboratories across Canada on the number of tests performed and the number of tests positive for influenza and other respiratory viruses. Data are reported on a weekly basis year-round to the Centre for Immunization and Respiratory Infectious Diseases (CIRID), Public Health Agency of Canada. These data are also summarized in the weekly FluWatch report.

**In this Respiratory Virus Report, the number of detections of coronavirus reflects only seasonal human coronaviruses, not the novel pandemic coronavirus (SARS-CoV-2) that causes COVID-19. For information on COVID-19, see the [Coronavirus disease \(COVID-19\): Outbreak update](#).**

**Figure 1: Positive respiratory virus tests (%) reported by participating laboratories in Canada by surveillance week compared to average and range from 2014-2015 to 2019-2020 season**



Shaded area represents the maximum and minimum % of respiratory virus tests positive reported by week from seasons 2014-2015 to 2019-2020

Note: Data from week 11 of the 2019-2020 season onwards is excluded from the historical comparison due to the COVID-19 pandemic

Note: % Tests Positive scale changes across the dashed line

<sup>a</sup> Human coronavirus excludes human coronaviruses SARS-CoV, MERS-CoV and SARS-CoV-2; Includes seasonal human coronaviruses HCoV-229E, HCoV-OC43, HCoV-NL63, HCoV-HKU1.

**Table 1: Respiratory virus detections for the week ending August 7, 2021 (surveillance week 2021-31)**

Reporting Laboratory	Flu Tested	A(H1)pdm09 Positive	A(H3) Positive	A(UnS) Positive	Total Flu A Positive	Total Flu B Positive	RSV Tested	RSV Positive	HPIV Tested	HPIV 1 Positive	HPIV 2 Positive	HPIV 3 Positive	HPIV 4 Positive	Other HPIV Positive	ADV Tested	ADV Positive	HMPV Tested	HMPV Positive	EV/RV Tested	EV/RV Positive	HCoV Tested	HCoV Positive
Newfoundland	138	0	0	0	0	0	138	1	138	0	0	1	0	0	138	0	138	0	138	6	N.C.	N.C.
Prince Edward Island	39	0	0	0	0	0	39	0	39	0	0	0	0	0	39	2	39	0	38	13	38	0
Nova Scotia	45	0	0	0	0	0	45	0	28	0	0	0	0	0	28	0	28	0	28	0	28	0
New Brunswick	88	0	0	0	0	0	80	0	66	0	0	0	0	0	66	1	66	0	66	1	66	0
<b>Atlantic</b>	<b>310</b>	<b>0</b>	<b>0</b>	<b>0</b>	<b>0</b>	<b>0</b>	<b>302</b>	<b>1</b>	<b>271</b>	<b>0</b>	<b>0</b>	<b>1</b>	<b>0</b>	<b>0</b>	<b>271</b>	<b>3</b>	<b>271</b>	<b>0</b>	<b>270</b>	<b>20</b>	<b>132</b>	<b>0</b>
Région Nord-Est	381	0	0	0	0	0	18	0	0	0	0	0	0	0	0	0	0	0	N.C.	N.C.	0	0
Québec-Chaudière-Appalaches	27	0	0	0	0	0	27	2	24	0	0	5	0	0	24	1	24	0	N.C.	N.C.	24	0
Centre-du-Québec	5	0	0	0	0	0	5	0	12	0	0	3	0	0	12	1	12	0	N.C.	N.C.	12	0
Montréal-Laval	350	0	0	0	0	0	350	49	109	0	0	11	0	0	109	5	109	4	N.C.	N.C.	109	3
Ouest du Québec	17	0	0	0	0	0	17	0	0	0	0	0	0	0	0	0	0	0	N.C.	N.C.	0	0
Montérégie	7	0	0	0	0	0	7	1	0	0	0	0	0	0	0	0	0	0	N.C.	N.C.	0	0
<b>Province of Québec</b>	<b>787</b>	<b>0</b>	<b>0</b>	<b>0</b>	<b>0</b>	<b>0</b>	<b>424</b>	<b>52</b>	<b>145</b>	<b>0</b>	<b>0</b>	<b>19</b>	<b>0</b>	<b>0</b>	<b>145</b>	<b>7</b>	<b>145</b>	<b>4</b>	<b>N.C.</b>	<b>N.C.</b>	<b>145</b>	<b>3</b>
P.H.O.L. - Ottawa	15	0	0	0	0	0	15	0	15	0	0	0	0	0	15	0	15	0	15	1	15	0
CHEO - Ottawa	66	0	0	0	0	0	66	0	18	0	0	1	0	0	18	0	18	0	18	1	18	0
P.H.O.L. - Kingston	9	0	0	0	0	0	9	0	9	0	0	0	0	0	9	0	9	0	9	7	9	0
UHN / Mount Sinai Hospital	290	0	0	0	0	0	290	0	8	0	0	0	0	0	8	0	8	0	8	0	8	0
P.H.O.L. - Toronto	117	0	0	0	0	0	117	0	117	0	0	0	0	2	117	2	117	0	117	33	117	0
Sick Kids Hospital - Toronto	N.R.	N.R.	N.R.	N.R.	N.R.	N.R.	N.R.	N.R.	N.R.	N.R.	N.R.	N.R.	N.R.	N.R.	N.R.	N.R.	N.R.	N.R.	N.R.	N.R.	N.R.	N.R.
Sunnybrook & Women's College HSC	N.R.	N.R.	N.R.	N.R.	N.R.	N.R.	N.R.	N.R.	N.R.	N.R.	N.R.	N.R.	N.R.	N.R.	N.R.	N.R.	N.R.	N.R.	N.R.	N.R.	N.R.	N.R.
P.H.O.L. - Sault Ste. Marie	6	0	0	0	0	0	6	0	6	0	0	0	0	0	6	0	6	0	6	0	6	0
P.H.O.L. - Timmins	0	0	0	0	0	0	0	0	0	0	0	0	0	0	0	0	0	0	0	0	0	0
St. Joseph's - London	N.R.	N.R.	N.R.	N.R.	N.R.	N.R.	N.R.	N.R.	N.R.	N.R.	N.R.	N.R.	N.R.	N.R.	N.R.	N.R.	N.R.	N.R.	N.R.	N.R.	N.R.	N.R.
P.H.O.L. - London	25	0	0	0	0	0	25	0	25	0	0	0	0	0	25	0	25	0	25	3	25	0
P.H.O.L. - Orillia	10	0	0	0	0	0	10	0	10	0	0	0	0	0	10	0	10	0	10	6	10	0
P.H.O.L. - Thunder Bay	1	0	0	0	0	0	1	0	1	0	0	0	0	0	1	0	1	0	1	0	1	0
P.H.O.L. - Sudbury	5	0	0	0	0	0	5	0	5	0	0	0	0	0	5	0	5	0	5	0	5	1
P.H.O.L. - Hamilton	6	0	0	0	0	0	6	0	6	0	0	0	0	0	6	0	6	0	6	3	6	0
P.H.O.L. - Peterborough	7	0	0	0	0	0	7	0	7	0	0	0	0	0	7	0	7	0	7	2	7	0
St. Joseph's - Hamilton	N.R.	N.R.	N.R.	N.R.	N.R.	N.R.	N.R.	N.R.	N.R.	N.R.	N.R.	N.R.	N.R.	N.R.	N.R.	N.R.	N.R.	N.R.	N.R.	N.R.	N.R.	N.R.
<b>Province of Ontario</b>	<b>557</b>	<b>0</b>	<b>0</b>	<b>0</b>	<b>0</b>	<b>0</b>	<b>557</b>	<b>0</b>	<b>227</b>	<b>0</b>	<b>0</b>	<b>1</b>	<b>0</b>	<b>2</b>	<b>227</b>	<b>2</b>	<b>227</b>	<b>0</b>	<b>227</b>	<b>56</b>	<b>227</b>	<b>1</b>
Province of Manitoba	999	0	0	0	0	0	999	0	13	0	0	0	0	0	13	0	71	0	13	5	71	0
Province of Saskatchewan	43	0	0	0	0	0	43	0	49	0	0	0	0	0	49	0	49	0	49	10	49	0
Province of Alberta	1117	0	0	0	0	0	431	0	431	0	0	5	2	0	431	3	431	0	431	156	431	2
<b>Prairies</b>	<b>2159</b>	<b>0</b>	<b>0</b>	<b>0</b>	<b>0</b>	<b>0</b>	<b>1473</b>	<b>0</b>	<b>493</b>	<b>0</b>	<b>0</b>	<b>5</b>	<b>2</b>	<b>0</b>	<b>493</b>	<b>3</b>	<b>551</b>	<b>0</b>	<b>493</b>	<b>171</b>	<b>551</b>	<b>2</b>
<b>British Columbia</b>	<b>495</b>	<b>0</b>	<b>0</b>	<b>0</b>	<b>0</b>	<b>0</b>	<b>495</b>	<b>1</b>	<b>201</b>	<b>0</b>	<b>0</b>	<b>0</b>	<b>0</b>	<b>0</b>	<b>201</b>	<b>1</b>	<b>201</b>	<b>0</b>	<b>197</b>	<b>16</b>	<b>196</b>	<b>1</b>
Yukon	87	0	0	0	0	0	87	0	N.C.	N.C.	N.C.	N.C.	N.C.	N.C.	N.C.	N.C.	N.C.	N.C.	N.C.	N.C.	N.C.	N.C.
Northwest Territories	3	0	0	0	0	0	1	0	1	0	0	0	0	0	1	0	1	0	1	0	1	0
Nunavut	0	0	0	0	0	0	0	0	0	0	0	0	0	0	0	0	0	0	0	0	0	0
<b>Territories</b>	<b>90</b>	<b>0</b>	<b>0</b>	<b>0</b>	<b>0</b>	<b>0</b>	<b>88</b>	<b>0</b>	<b>1</b>	<b>0</b>	<b>0</b>	<b>0</b>	<b>0</b>	<b>0</b>	<b>1</b>	<b>0</b>	<b>1</b>	<b>0</b>	<b>1</b>	<b>0</b>	<b>1</b>	<b>0</b>
<b>CANADA</b>	<b>4398</b>	<b>0</b>	<b>0</b>	<b>0</b>	<b>0</b>	<b>0</b>	<b>3339</b>	<b>54</b>	<b>1338</b>	<b>0</b>	<b>0</b>	<b>26</b>	<b>2</b>	<b>2</b>	<b>1338</b>	<b>16</b>	<b>1396</b>	<b>4</b>	<b>1188</b>	<b>263</b>	<b>1252</b>	<b>7</b>

The data in the RVDSS report represent surveillance data available at the time of writing. Data missing from the current week are denoted by N.R. Data not collected by reporting lab denoted by N.C.

Specimens from Yukon (YT), Northwest Territories (NT) and Nunavut (NU) are sent to reference laboratories in other provinces and reported results reflect specimens identified as originating from YT, NT or NU.

Results from British Columbia comprise of specimens from the following sites: BC Children's and Women's Hospital, Children's and Women's Hospital Laboratory, Fraser Health Medical Microbiology Laboratory, Island Health, Providence Health Care, Powell River Hospital, St. Paul's Hospital, Vancouver General Hospital, Victoria General Hospital, BCCDC Public Health Laboratory, Interior Health Authority sites and Northern Health Authority sites.

Delays in the reporting of data may cause data to change retrospectively.

Influenza co-detections may cause the sum of A(H1)pdm09, A(H3), and A(UnS) positive results to exceed the sum of Total Flu A Positive results.

**Table 2: Cumulative respiratory virus detections from August 23, 2020 to August 7, 2021 (surveillance week 2020-35 to 2021-31)**

Reporting Laboratory	Flu Tested	A(H1)pdm09 Positive	A(H3) Positive	A(UnS) Positive	Total Flu A Positive	Total Flu B Positive	RSV Tested	RSV Positive	HPIV Tested	HPIV 1 Positive	HPIV 2 Positive	HPIV 3 Positive	HPIV 4 Positive	Other HPIV Positive	ADV Tested	ADV Positive	HMPV Tested	HMPV Positive	EV/RV Tested	EV/RV Positive	HCoV Tested	HCoV Positive
Newfoundland	14387	0	0	0	0	0	14386	11	14386	1	0	5	0	0	14399	57	13799	2	13729	2223	N.C.	N.C.
Prince Edward Island	4298	0	0	0	0	0	4298	4	4294	3	0	0	1	0	4294	46	4294	0	4293	518	4293	2
Nova Scotia	8771	0	0	0	0	0	8774	0	1567	0	10	0	1	0	1567	17	1567	1	1567	91	1595	0
New Brunswick	54984	0	0	0	0	1	20858	0	1870	0	0	0	0	0	1861	12	1861	0	1861	65	1816	2
<b>Atlantic</b>	<b>82440</b>	<b>0</b>	<b>0</b>	<b>0</b>	<b>0</b>	<b>1</b>	<b>48316</b>	<b>15</b>	<b>22117</b>	<b>4</b>	<b>10</b>	<b>5</b>	<b>2</b>	<b>0</b>	<b>22121</b>	<b>132</b>	<b>21521</b>	<b>3</b>	<b>21450</b>	<b>2897</b>	<b>7704</b>	<b>4</b>
Région Nord-Est	11066	0	0	0	0	0	1292	1	8	0	0	0	0	0	8	1	8	0	N.C.	N.C.	8	0
Québec-Chaudière-Appalaches	978	0	0	1	1	0	1101	7	949	0	0	54	1	0	951	53	946	0	N.C.	N.C.	929	31
Centre-du-Québec	987	0	0	0	0	0	995	2	500	0	0	20	0	0	498	28	500	0	N.C.	N.C.	497	17
Montréal-Laval	13289	0	0	0	0	0	12332	399	5546	88	0	171	0	0	5600	205	5530	8	N.C.	N.C.	5530	146
Ouest du Québec	2663	0	0	0	0	0	2554	1	0	0	0	0	0	0	0	0	0	0	N.C.	N.C.	0	0
Montérégie	1281	0	0	0	0	0	1281	4	0	0	0	0	0	0	0	0	0	0	N.C.	N.C.	0	0
<b>Province of Québec</b>	<b>30264</b>	<b>0</b>	<b>0</b>	<b>1</b>	<b>1</b>	<b>0</b>	<b>19555</b>	<b>414</b>	<b>7003</b>	<b>88</b>	<b>0</b>	<b>245</b>	<b>1</b>	<b>0</b>	<b>7057</b>	<b>287</b>	<b>6984</b>	<b>8</b>	<b>N.C.</b>	<b>N.C.</b>	<b>6964</b>	<b>194</b>
P.H.O.L. - Ottawa	697	0	0	0	0	0	697	1	586	0	0	0	0	0	586	0	585	0	586	30	585	2
CHEO - Ottawa	5608	0	0	1	1	1	5205	5	1187	0	0	6	0	0	1062	17	1062	1	1062	119	1062	7
P.H.O.L. - Kingston	951	0	0	1	1	0	951	0	625	0	0	0	0	1	625	5	617	0	625	127	617	0
UHN / Mount Sinai Hospital	17624	2	0	2	4	1	17555	7	10780	3	2	5	8	0	9154	11	10740	10	10537	105	8576	7
P.H.O.L. - Toronto	7467	0	0	0	0	0	7464	3	6432	0	0	0	0	6	6434	24	6430	3	6432	248	6430	6
Sick Kids Hospital - Toronto	1380	0	0	0	0	0	0	0	1380	0	0	1	0	0	1380	21	1380	0	1380	134	1380	1
Sunnybrook & Women's College HSC	0	0	0	0	0	0	0	0	0	0	0	0	0	0	0	0	0	0	0	0	0	0
P.H.O.L. - Sault Ste. Marie	185	0	0	2	2	0	183	0	109	0	0	0	0	0	109	0	109	0	109	6	109	0
P.H.O.L. - Timmins	635	0	0	0	0	0	635	0	175	0	0	0	0	0	175	1	174	0	175	32	174	0
St. Joseph's - London	218	0	0	0	0	0	218	0	55	0	0	0	0	0	55	0	55	0	91	8	36	0
P.H.O.L. - London	2054	1	0	5	6	2	2044	0	1382	0	0	0	0	2	1382	2	1376	0	1382	130	1376	3
P.H.O.L. - Orillia	440	0	0	1	1	0	438	0	220	0	0	0	0	0	220	2	220	0	220	22	220	0
P.H.O.L. - Thunder Bay	430	0	0	0	0	0	430	0	410	0	0	0	0	0	411	3	410	0	410	142	410	0
P.H.O.L. - Sudbury	552	0	0	0	0	0	550	1	371	0	0	0	0	4	371	4	371	0	371	32	371	7
P.H.O.L. - Hamilton	1607	0	1	0	1	0	1551	1	1294	0	0	0	0	0	1294	2	1294	0	1294	107	1294	0
P.H.O.L. - Peterborough	594	0	0	1	1	0	548	0	435	0	0	0	0	0	435	0	434	0	435	30	434	0
St. Joseph's - Hamilton	10624	0	0	0	0	0	10624	3	10624	0	0	4	0	0	10624	24	10624	0	10624	486	0	0
<b>Province of Ontario</b>	<b>51066</b>	<b>3</b>	<b>1</b>	<b>13</b>	<b>17</b>	<b>4</b>	<b>49093</b>	<b>21</b>	<b>36065</b>	<b>3</b>	<b>2</b>	<b>16</b>	<b>8</b>	<b>13</b>	<b>34317</b>	<b>116</b>	<b>35881</b>	<b>14</b>	<b>35733</b>	<b>1758</b>	<b>23074</b>	<b>33</b>
Manitoba	68726	0	1	3	4	2	68716	69	2951	0	1	3	0	0	2951	20	4246	1	2951	192	4246	8
Province of Saskatchewan	172225	0	0	1	1	0	27358	4	2278	0	0	1	1	0	2278	18	2278	4	2278	250	2278	15
Province of Alberta	139079	0	0	1	1	0	82087	0	82087	4	20	17	12	0	82087	176	82087	11	82087	7833	82087	39
<b>Prairies</b>	<b>380030</b>	<b>0</b>	<b>1</b>	<b>5</b>	<b>6</b>	<b>2</b>	<b>178161</b>	<b>73</b>	<b>87316</b>	<b>4</b>	<b>21</b>	<b>21</b>	<b>13</b>	<b>0</b>	<b>87316</b>	<b>214</b>	<b>88611</b>	<b>16</b>	<b>87316</b>	<b>8275</b>	<b>88611</b>	<b>62</b>
<b>British Columbia</b>	<b>93542</b>	<b>3</b>	<b>8</b>	<b>1</b>	<b>10</b>	<b>8</b>	<b>93041</b>	<b>7</b>	<b>21180</b>	<b>2</b>	<b>4</b>	<b>1</b>	<b>15</b>	<b>6</b>	<b>21726</b>	<b>140</b>	<b>21351</b>	<b>74</b>	<b>21131</b>	<b>1760</b>	<b>16965</b>	<b>28</b>
Yukon	7837	0	0	8	8	7	7746	4	N.C.	N.C.	N.C.	N.C.	N.C.	N.C.	N.C.	N.C.	N.C.	N.C.	N.C.	N.C.	N.C.	N.C.
Northwest Territories	1232	0	0	0	0	0	1172	0	1172	0	0	0	1	0	1172	12	1172	1	1172	330	1172	1
Nunavut	1128	0	0	0	0	0	1104	0	1104	3	1	0	0	0	1104	25	1104	5	1104	283	192	0
<b>Territories</b>	<b>10197</b>	<b>0</b>	<b>0</b>	<b>8</b>	<b>8</b>	<b>7</b>	<b>10022</b>	<b>4</b>	<b>2276</b>	<b>3</b>	<b>1</b>	<b>0</b>	<b>1</b>	<b>0</b>	<b>2276</b>	<b>37</b>	<b>2276</b>	<b>6</b>	<b>2276</b>	<b>613</b>	<b>1364</b>	<b>1</b>
<b>CANADA</b>	<b>647539</b>	<b>6</b>	<b>10</b>	<b>28</b>	<b>42</b>	<b>22</b>	<b>398188</b>	<b>534</b>	<b>175957</b>	<b>104</b>	<b>38</b>	<b>288</b>	<b>40</b>	<b>19</b>	<b>174813</b>	<b>926</b>	<b>176624</b>	<b>121</b>	<b>167906</b>	<b>15303</b>	<b>144682</b>	<b>322</b>

The data in the RVDSS report represent surveillance data available at the time of writing. Data not collected by reporting lab denoted by N.C.

Specimens from Yukon (YT), Northwest Territories (NT) and Nunavut (NU) are sent to reference laboratories in other provinces and reported results reflect specimens identified as originating from YT, NT or NU.

Results from British Columbia comprise of specimens from the following sites: BC Children's and Women's Hospital, Children's and Women's Hospital Laboratory, Fraser Health Medical Microbiology Laboratory, Island Health, Providence Health Care, Powell River Hospital, St. Paul's Hospital, Vancouver General Hospital, Victoria General Hospital, BCCDC Public Health Laboratory, Interior Health Authority sites and Northern Health Authority sites.

Delays in the reporting of data may cause data to change retrospectively. Due to these delays, the sum of weekly report totals do not add up to cumulative totals.

Influenza co-detections may cause the sum of A(H1N1)pdm09, A(H3), and A(UnS) positive results to exceed the sum of Total Flu A Positive results.

**Figure 2: Number of positive respiratory virus tests reported by participating laboratories in Canada by surveillance week**

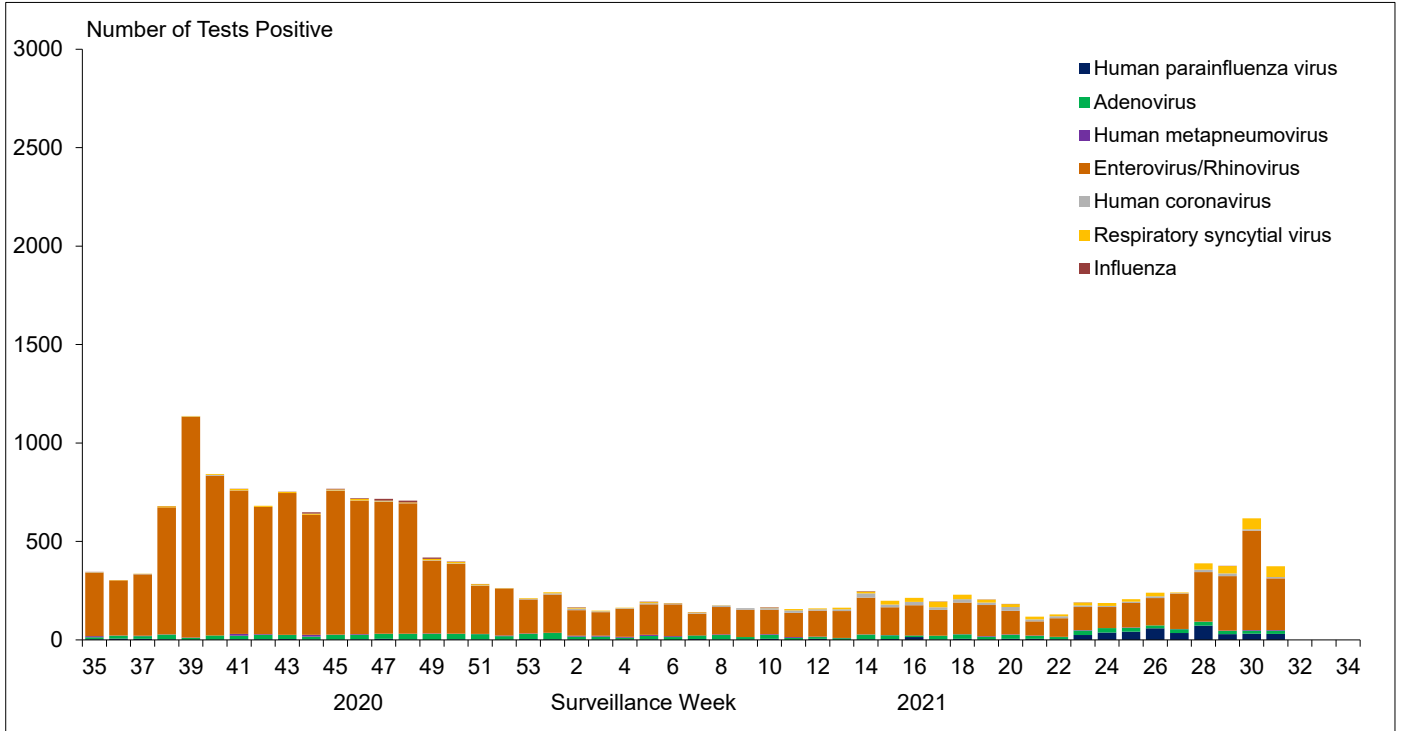


Figure 3: Positive Influenza (Flu) tests (%) in Canada by region by surveillance week

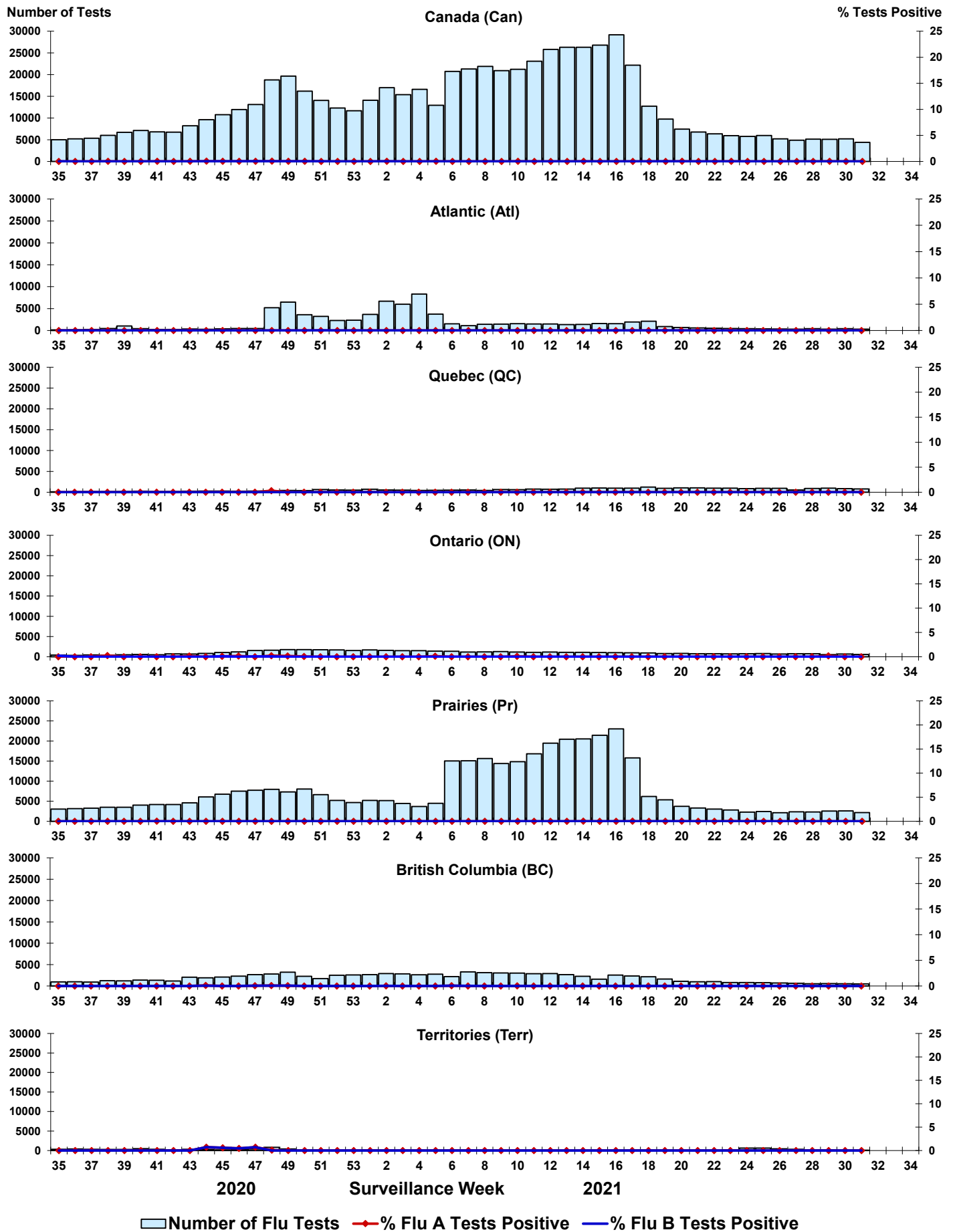


Figure 4: Positive Respiratory syncytial virus (RSV) tests (%) in Canada by region by surveillance week

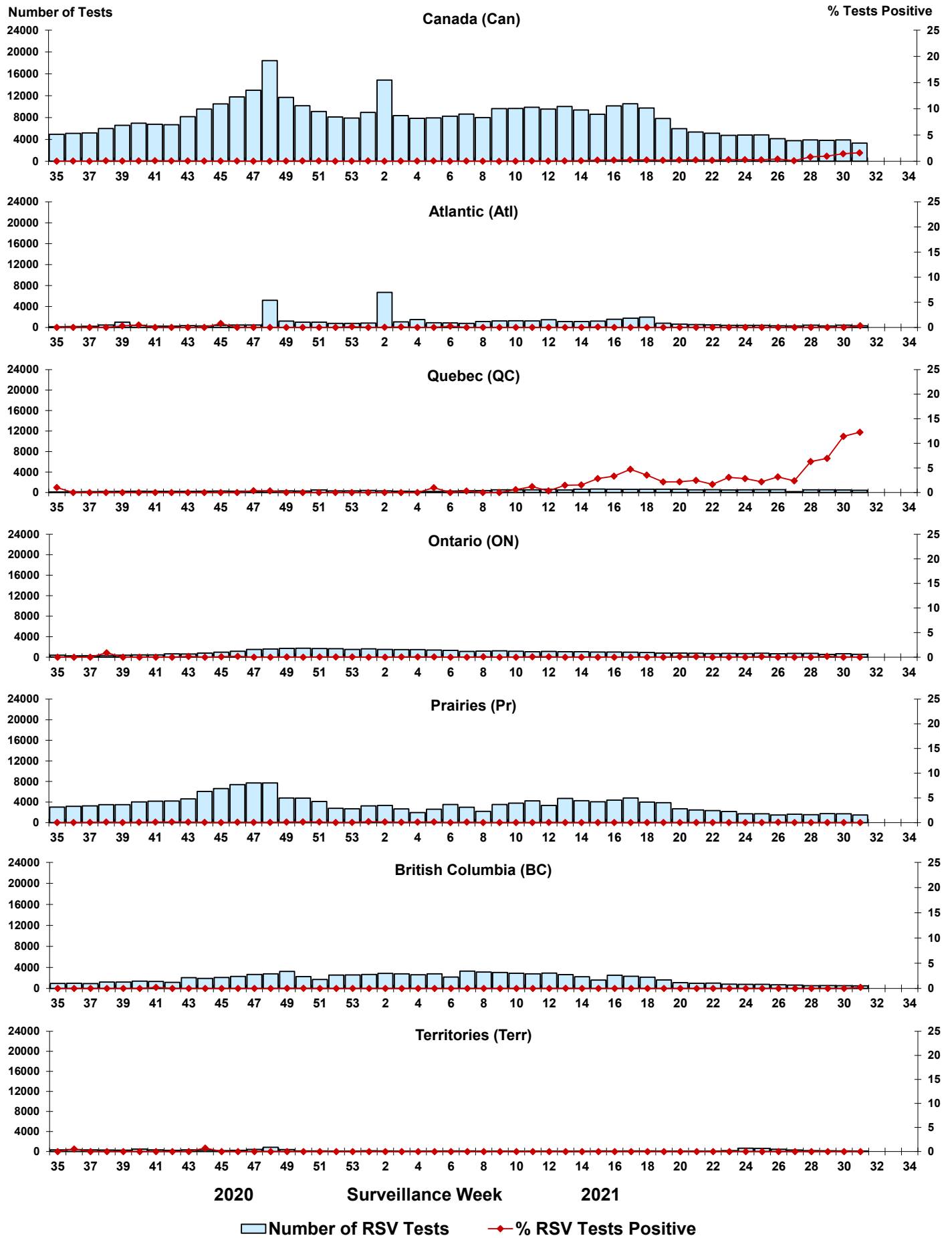


Figure 5: Positive Human parainfluenza virus (HPIV) tests (%) in Canada by region by surveillance week

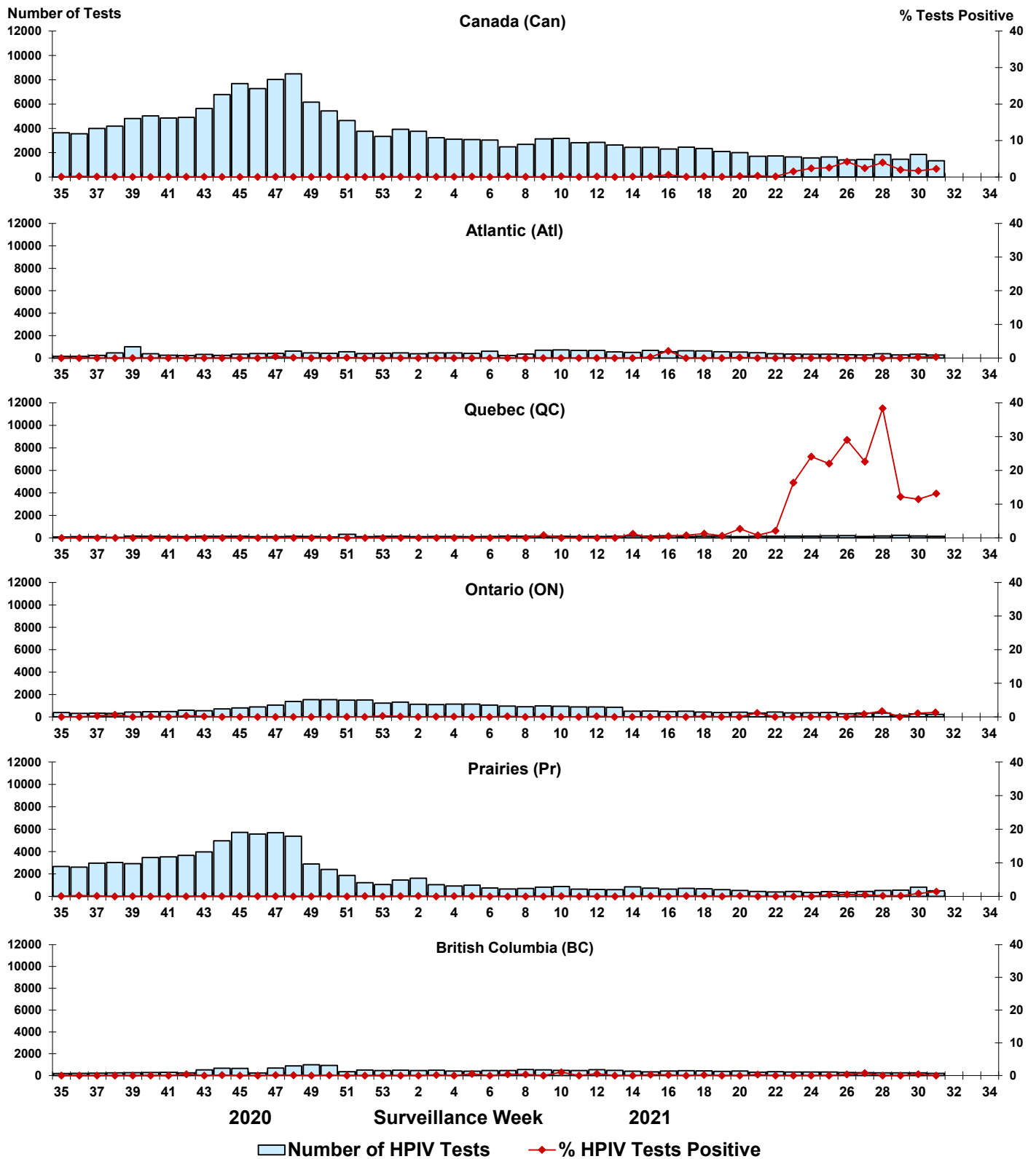




Figure 6: Positive Adenovirus (ADV) tests (%) in Canada by region by surveillance week

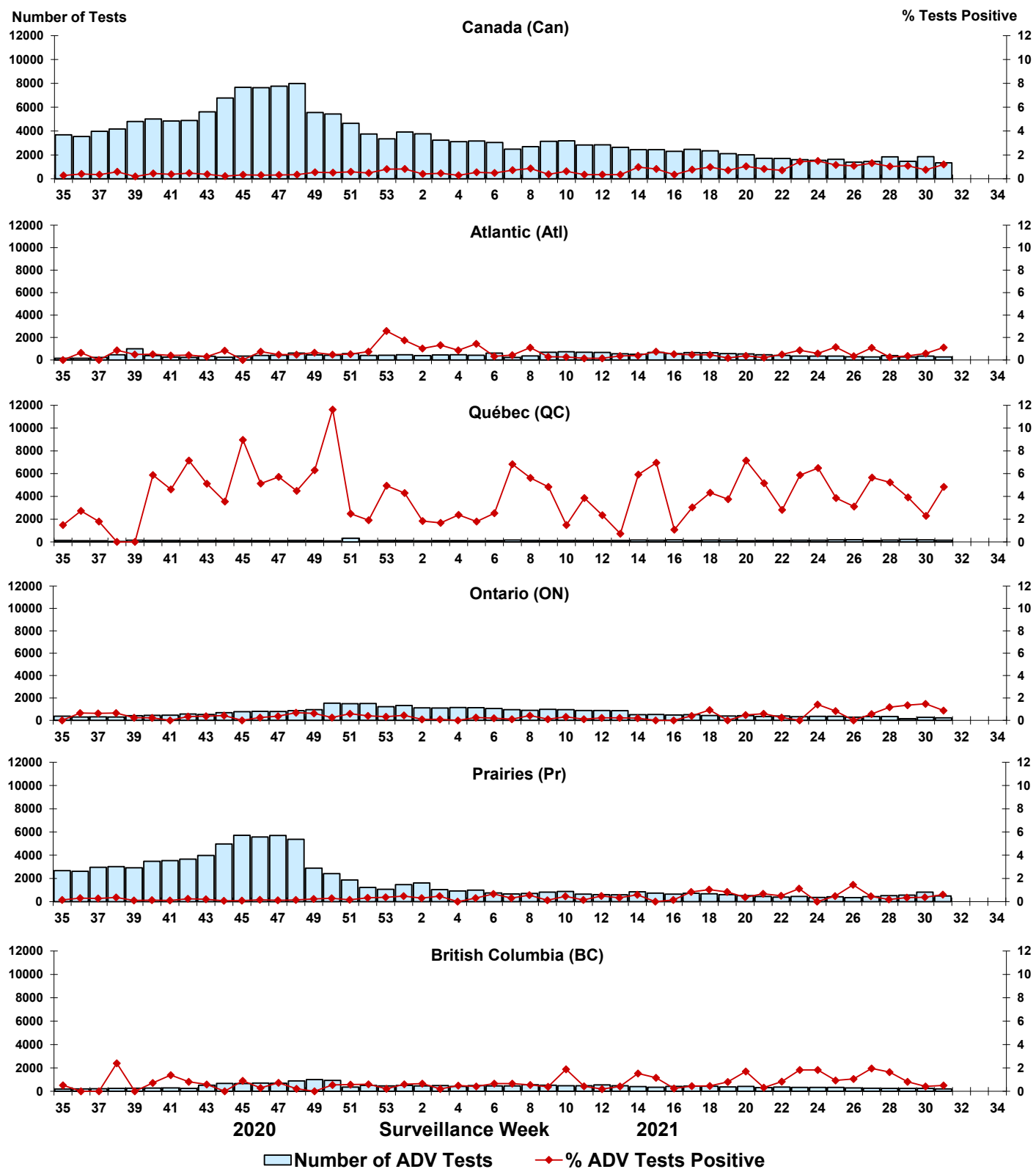


Figure 7: Positive Human metapneumovirus (HMPV) tests (%) in Canada by region by surveillance week

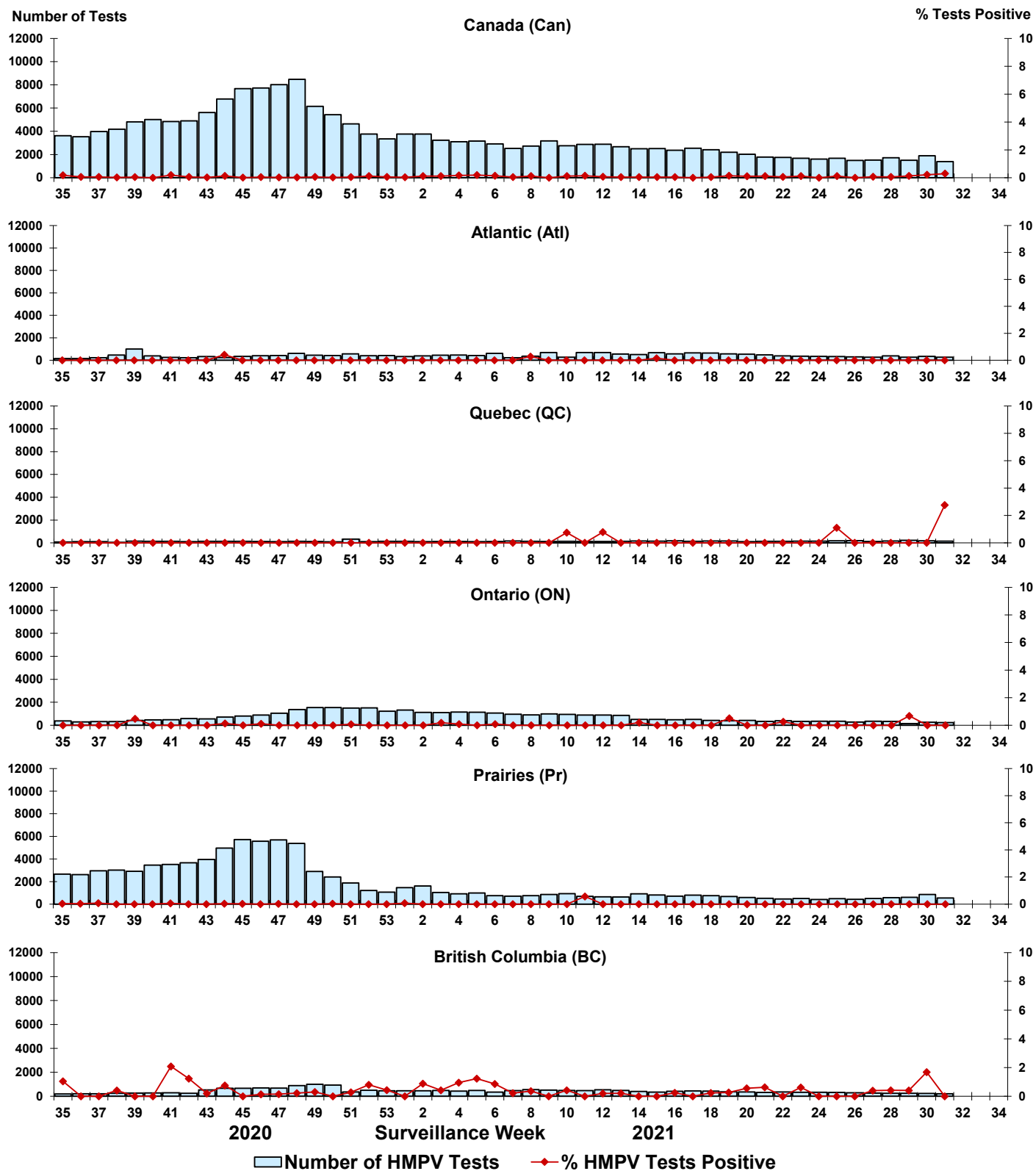


Figure 8: Positive Enterovirus/Rhinovirus (EV/RV) tests (%) in Canada by region by surveillance week

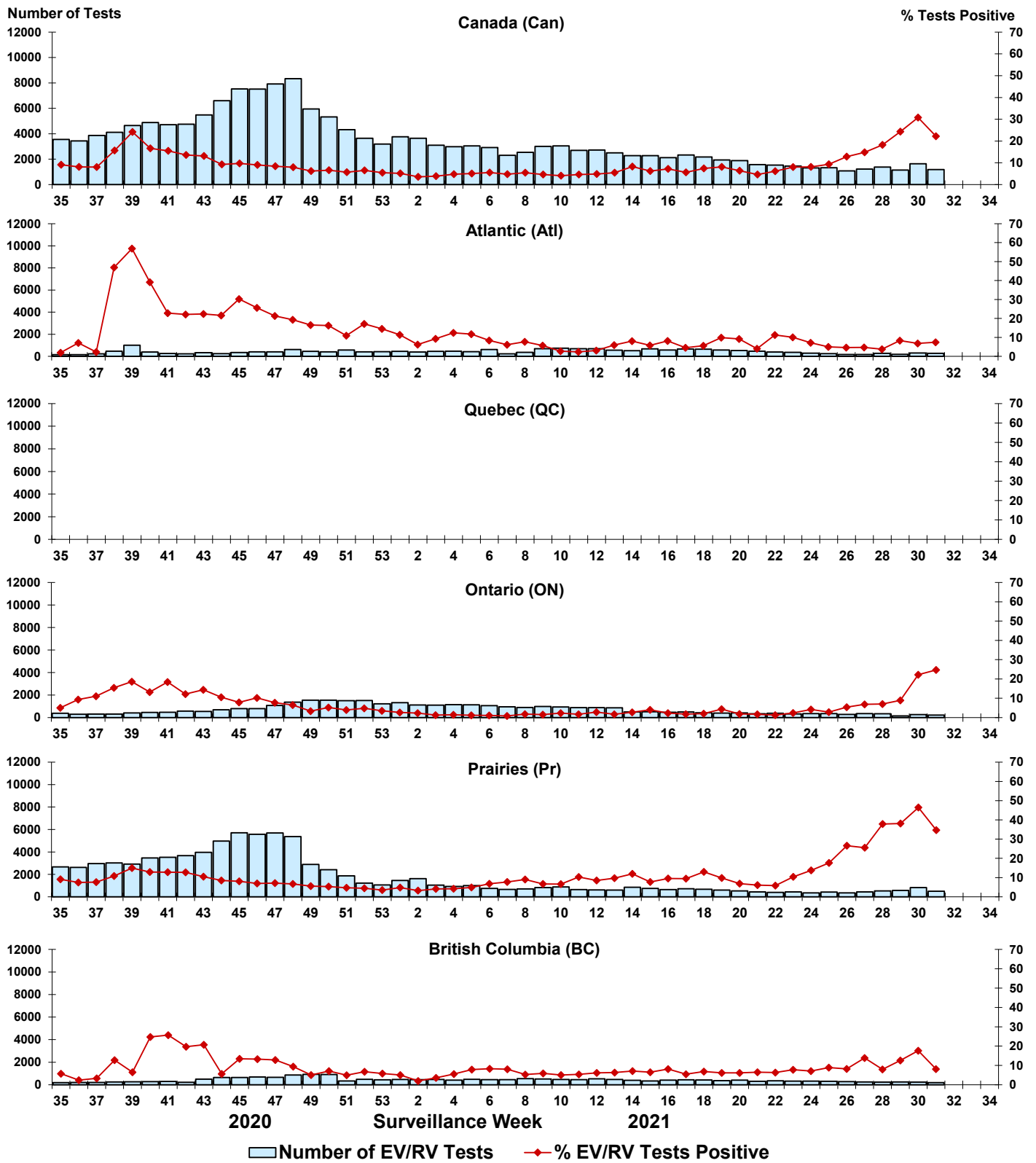
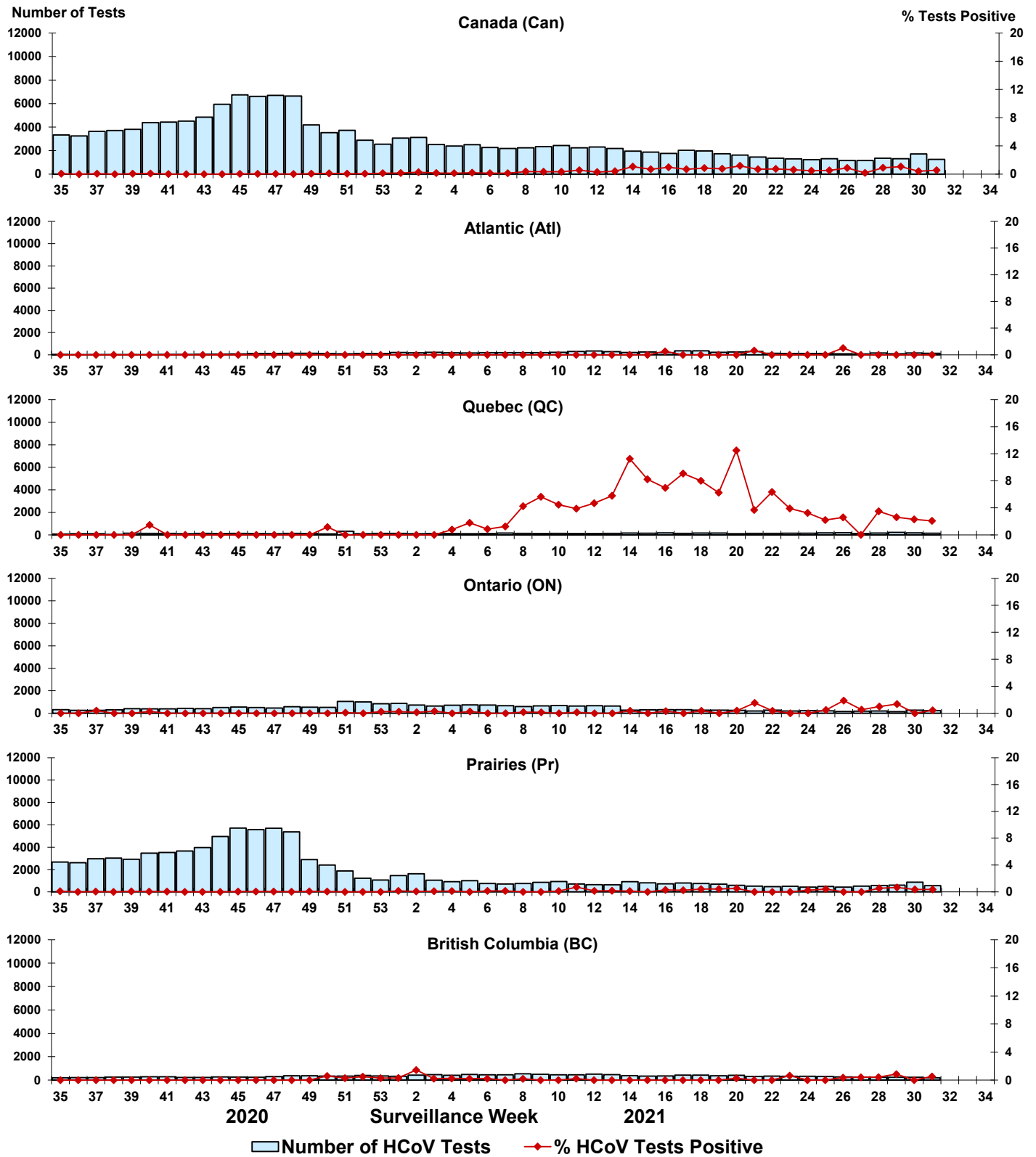


Figure 9: Positive Human coronavirus (HCoV) tests (%) in Canada by region by surveillance week



## **Abbreviations:**

Flu: Influenza

A(H1)pdm09: Influenza A(H1N1)pdm09

A(H3): Influenza A(H3N2)

A(UnS): Influenza A(Unsubtyped)

RSV: Respiratory syncytial virus

HPIV: Human parainfluenza virus

HMPV: Human metapneumovirus

ADV: Adenovirus

EV/RV: Enterovirus/Rhinovirus

HCoV: Human coronavirus

Atl: Atlantic Canada

BC: British Columbia

Can: Canada

CHEO: Children's Hospital of Eastern Ontario

HSC: Health Sciences Centre

N.C.: Data not collected

N.R.: Data not reported for current week

ON: Ontario

PR: Prairies

P.H.O.L.: Public Health Ontario Laboratory

QC: Quebec

Terr: Territories of Canada

UHN: University Health Network