

# RESPIRATORY VIRUS DETECTION REPORT

August 7 to August 13, 2022  
(Surveillance Week 2022-32)



In this Respiratory Virus Report, the number of detections of coronavirus reflects only seasonal human coronaviruses, not the novel pandemic coronavirus (SARS-CoV-2) that causes COVID-19. For information on COVID-19, see the [Coronavirus disease \(COVID-19\): Outbreak update](#).

## Overall Summary

Weekly respiratory virus detections have steadily decreased since mid-May.

- Influenza activity is at interseasonal levels, with only 17 detections (15 influenza A, 2 influenza B) reported in week 32 (week ending August 13, 2022).
- Enterovirus/Rhinovirus remains the most common seasonal respiratory virus detected in Canada (281 detections; 13.2% positive). Activity remains slightly below expected levels for this time of year.
- Activity of most other respiratory viruses is near expected levels.
  - With the exception of human metapneumovirus, where activity has fluctuated in recent weeks but is above expected levels for this time of year (97 detections; 3.5% positive).
- The number of tests performed for all viruses was above expected levels.
- 31/34 sentinel laboratories reported surveillance data.

## Abbreviations

Flu: Influenza

Flu A(H1N1)pdm09: Influenza A(H1N1)pdm09

Flu A(H3): Influenza A(H3N2)

Flu A(UnS): Influenza A(Unsubtyped)

RSV: Respiratory syncytial virus

HPIV: Human parainfluenza virus

HMPV: Human metapneumovirus

ADV: Adenovirus

EV/RV: Enterovirus/Rhinovirus

HCoV: Human coronavirus

Atl: Atlantic Canada

BC: British Columbia

Can: Canada

EORLA: Eastern Ontario Regional Laboratory Association

HSC: Health Sciences Centre

N.C.: Data not collected

N.R.: Data not reported for current week

ON: Ontario

PR: Prairies

P.H.O.L.: Public Health Ontario Laboratory

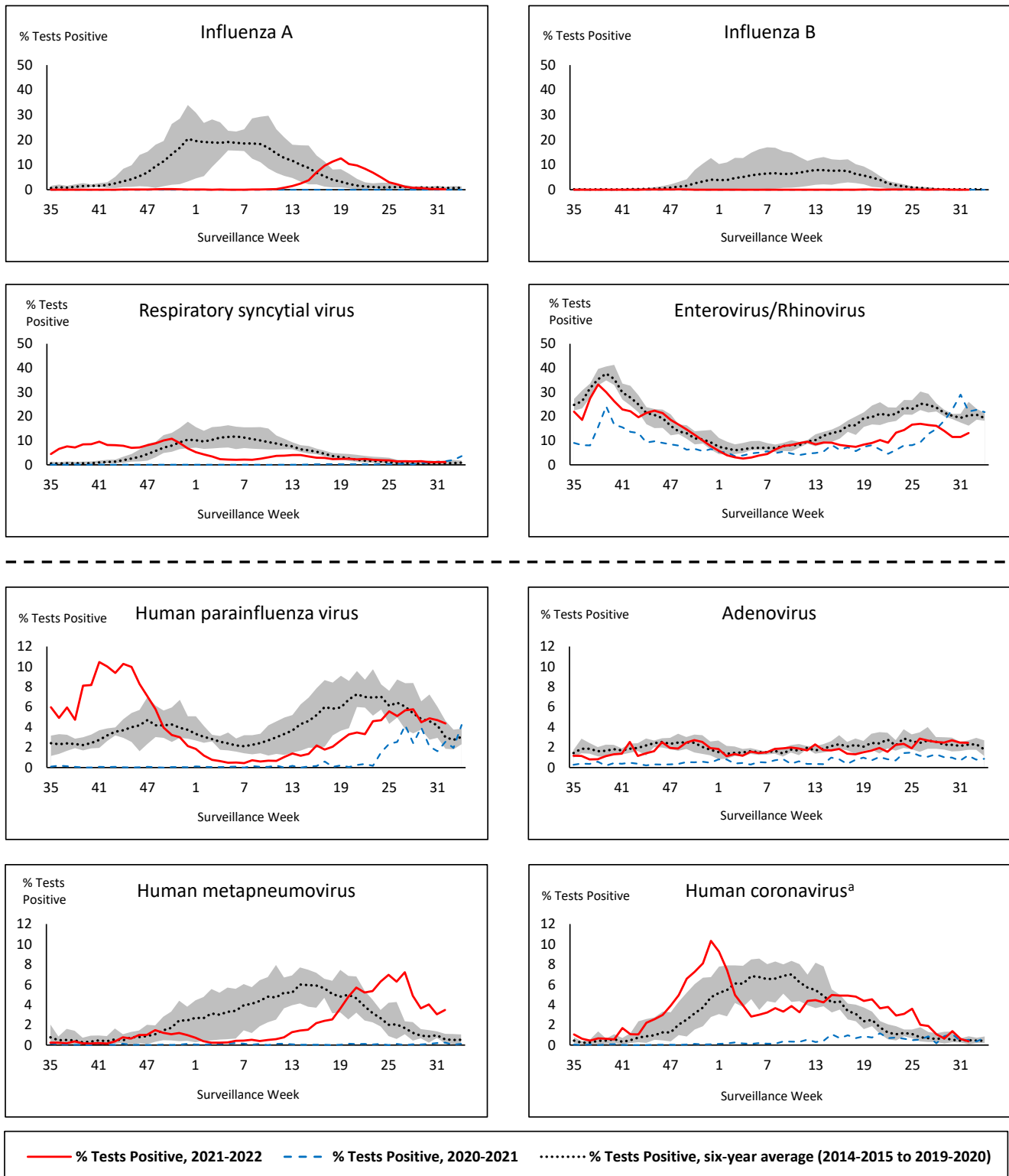
QC: Quebec

Terr: Territories of Canada

UHN: University Health Network



**Figure 1: Positive respiratory virus tests (%) reported by participating laboratories in Canada by surveillance week compared to average and range from 2014-2015 to 2019-2020 season**



Shaded area represents the maximum and minimum % of respiratory virus tests positive reported by week from seasons 2014-2015 to 2019-2020

Note: Data from week 11 of the 2019-2020 season onwards are excluded from the historical comparison due to the COVID-19 pandemic

Note: % Tests Positive scale changes across the dashed line

<sup>a</sup> Human coronavirus excludes human coronaviruses SARS-CoV, MERS-CoV and SARS-CoV-2; Includes seasonal human coronaviruses HCoV-229E, HCoV-OC43, HCoV-NL63, HCoV-HKU1.

**Table 1: Respiratory virus detections for the week ending August 13, 2022 (surveillance week 2022-32)**

Reporting Laboratory	Flu Tested	A(H1)pdm09 Positive	A(H3) Positive	A(UnS) Positive	Total Flu A Positive	Total Flu B Positive	RSV Tested	RSV Positive	HPIV Tested	HPIV 1 Positive	HPIV 2 Positive	HPIV 3 Positive	HPIV 4 Positive	Other HPIV Positive	ADV Tested	ADV Positive	HMPV Tested	HMPV Positive	EV/RV Tested	EV/RV Positive	HCoV Tested	HCoV Positive
Newfoundland	120	0	0	0	0	0	120	1	120	0	2	0	0	0	120	0	120	2	120	11	120	1
Prince Edward Island	16	0	0	0	0	0	16	0	16	0	0	0	0	0	16	0	16	1	16	4	16	0
Nova Scotia	414	0	0	0	0	0	413	2	35	0	0	0	0	0	30	1	30	2	30	3	30	2
New Brunswick	252	0	0	0	0	0	156	2	41	0	0	1	0	0	41	4	41	0	41	0	41	0
<b>Atlantic</b>	<b>802</b>	<b>0</b>	<b>0</b>	<b>0</b>	<b>0</b>	<b>0</b>	<b>705</b>	<b>5</b>	<b>212</b>	<b>0</b>	<b>2</b>	<b>1</b>	<b>0</b>	<b>0</b>	<b>207</b>	<b>5</b>	<b>207</b>	<b>5</b>	<b>207</b>	<b>18</b>	<b>207</b>	<b>3</b>
Région Nord-Est	628	0	0	1	1	1	111	1	7	0	0	1	0	0	7	0	7	0	N.C.	N.C.	7	0
Québec-Chaudière-Appalaches	374	0	0	0	0	0	374	3	33	0	0	8	0	0	213	7	212	1	N.C.	N.C.	104	1
Centre-du-Québec	266	0	0	0	0	0	228	0	31	1	0	0	0	0	31	0	31	3	N.C.	N.C.	31	0
Montréal-Laval	736	0	0	0	0	0	947	10	384	2	3	15	0	0	384	11	384	19	N.C.	N.C.	414	0
Ouest du Québec	188	0	0	1	1	0	188	3	18	1	0	1	0	0	18	0	18	0	N.C.	N.C.	18	2
Montréal	410	0	0	0	0	0	410	5	0	0	0	0	0	0	0	0	0	0	N.C.	N.C.	0	0
<b>Province of Québec</b>	<b>2602</b>	<b>0</b>	<b>0</b>	<b>2</b>	<b>2</b>	<b>1</b>	<b>2258</b>	<b>22</b>	<b>473</b>	<b>4</b>	<b>3</b>	<b>25</b>	<b>0</b>	<b>0</b>	<b>653</b>	<b>18</b>	<b>652</b>	<b>23</b>	<b>N.C.</b>	<b>N.C.</b>	<b>574</b>	<b>3</b>
P.H.O.L. - Ottawa	27	0	0	0	0	0	27	0	27	0	0	0	0	0	27	0	27	0	27	1	27	0
EORLA	170	0	0	0	0	0	170	4	25	0	0	0	0	0	25	1	25	1	25	4	25	0
P.H.O.L. - Kingston	26	0	0	0	0	0	26	0	26	0	0	0	0	0	26	0	26	0	26	1	26	0
UHN / Mount Sinai Hospital	418	0	0	0	0	0	418	3	8	0	0	0	0	0	8	0	8	0	8	0	8	0
P.H.O.L. - Toronto	236	0	3	0	0	0	236	4	236	0	0	0	0	18	236	5	236	16	236	23	236	1
Sick Kids Hospital - Toronto	N.R.	N.R.	N.R.	N.R.	N.R.	N.R.	N.R.	N.R.	N.R.	N.R.	N.R.	N.R.	N.R.	N.R.	N.R.	N.R.	N.R.	N.R.	N.R.	N.R.	N.R.	N.R.
Sunnybrook & Women's College HSC	N.R.	N.R.	N.R.	N.R.	N.R.	N.R.	N.R.	N.R.	N.R.	N.R.	N.R.	N.R.	N.R.	N.R.	N.R.	N.R.	N.R.	N.R.	N.R.	N.R.	N.R.	N.R.
P.H.O.L. - Sault Ste. Marie	11	0	0	0	0	0	11	0	11	0	0	0	0	1	11	0	11	0	11	4	11	0
P.H.O.L. - Timmins	8	0	0	0	0	0	8	0	8	0	0	0	0	0	8	0	8	0	8	3	8	0
St. Joseph's - London	39	0	0	0	0	0	39	0	39	0	0	0	0	0	39	1	39	1	39	6	4	0
P.H.O.L. - London	64	0	0	0	0	0	64	5	64	0	0	0	0	1	64	0	64	1	64	3	64	0
P.H.O.L. - Orillia	18	0	1	0	1	0	18	3	18	0	0	0	0	1	18	2	18	1	18	3	18	0
P.H.O.L. - Thunder Bay	2	0	0	0	0	0	2	0	2	0	0	0	0	1	2	0	2	1	2	0	2	0
P.H.O.L. - Sudbury	4	0	0	0	0	0	4	0	4	0	0	0	0	0	4	0	4	0	4	0	4	0
P.H.O.L. - Hamilton	59	0	0	0	0	0	59	0	59	0	0	0	0	0	59	2	59	3	59	5	59	0
P.H.O.L. - Peterborough	14	0	0	0	0	0	14	3	14	0	0	0	0	1	14	2	14	0	14	3	14	0
St. Joseph's - Hamilton	N.R.	N.R.	N.R.	N.R.	N.R.	N.R.	N.R.	N.R.	N.R.	N.R.	N.R.	N.R.	N.R.	N.R.	N.R.	N.R.	N.R.	N.R.	N.R.	N.R.	N.R.	N.R.
<b>Province of Ontario</b>	<b>1096</b>	<b>0</b>	<b>4</b>	<b>0</b>	<b>1</b>	<b>0</b>	<b>1096</b>	<b>22</b>	<b>541</b>	<b>0</b>	<b>0</b>	<b>0</b>	<b>0</b>	<b>23</b>	<b>541</b>	<b>13</b>	<b>541</b>	<b>24</b>	<b>541</b>	<b>56</b>	<b>506</b>	<b>1</b>
Province of Manitoba	568	0	0	0	0	0	568	6	137	0	0	1	2	0	137	5	155	9	137	30	155	0
Province of Saskatchewan	364	0	0	1	1	0	364	1	179	0	5	1	3	0	179	6	179	20	179	31	179	0
Province of Alberta	1596	0	2	0	2	0	1408	16	627	2	3	22	1	0	626	7	626	1	621	71	627	3
<b>Prairies</b>	<b>2528</b>	<b>0</b>	<b>2</b>	<b>1</b>	<b>3</b>	<b>0</b>	<b>2340</b>	<b>23</b>	<b>943</b>	<b>2</b>	<b>8</b>	<b>24</b>	<b>6</b>	<b>0</b>	<b>942</b>	<b>18</b>	<b>960</b>	<b>30</b>	<b>937</b>	<b>132</b>	<b>961</b>	<b>3</b>
<b>British Columbia</b>	<b>2437</b>	<b>0</b>	<b>1</b>	<b>0</b>	<b>9</b>	<b>1</b>	<b>2288</b>	<b>16</b>	<b>429</b>	<b>0</b>	<b>1</b>	<b>9</b>	<b>5</b>	<b>1</b>	<b>429</b>	<b>14</b>	<b>429</b>	<b>15</b>	<b>421</b>	<b>68</b>	<b>421</b>	<b>0</b>
Yukon	5	0	0	0	0	0	5	0	N.C.	N.C.	N.C.	N.C.	N.C.	N.C.	N.C.	N.C.	N.C.	N.C.	N.C.	N.C.	N.C.	N.C.
Northwest Territories	30	0	0	0	0	0	30	6	2	0	0	0	0	0	2	0	2	0	30	7	2	0
Nunavut	87	0	0	0	0	0	87	5	N.C.	N.C.	N.C.	N.C.	N.C.	N.C.	N.C.	N.C.	N.C.	N.C.	N.C.	N.C.	N.C.	N.C.
<b>Territories</b>	<b>122</b>	<b>0</b>	<b>0</b>	<b>0</b>	<b>0</b>	<b>0</b>	<b>122</b>	<b>11</b>	<b>2</b>	<b>0</b>	<b>0</b>	<b>0</b>	<b>0</b>	<b>0</b>	<b>2</b>	<b>0</b>	<b>2</b>	<b>0</b>	<b>30</b>	<b>7</b>	<b>2</b>	<b>0</b>
<b>CANADA</b>	<b>9587</b>	<b>0</b>	<b>7</b>	<b>3</b>	<b>15</b>	<b>2</b>	<b>8809</b>	<b>99</b>	<b>2600</b>	<b>6</b>	<b>14</b>	<b>59</b>	<b>11</b>	<b>24</b>	<b>2774</b>	<b>68</b>	<b>2791</b>	<b>97</b>	<b>2136</b>	<b>281</b>	<b>2671</b>	<b>10</b>

The data in the RVDSS report represent surveillance data available at the time of writing. Data missing from the current week are denoted by N.R. Data not collected by reporting lab denoted by N.C.

The reporting laboratory previously listed as CHEO - Ottawa is now listed as EORLA to better reflect data submitted by this provider.

Specimens from Yukon (YT) are sent to reference laboratories in British Columbia and reported results reflect specimens identified as originating from YT.

Results from British Columbia comprise of specimens from the following sites: BC Children's and Women's Hospital, Children's and Women's Hospital Laboratory, Fraser Health Medical Microbiology Laboratory, Island Health, Providence Health Care, Powell River Hospital, St. Paul's Hospital, Vancouver General Hospital, Victoria General Hospital, BCCDC Public Health Laboratory, Interior Health Authority sites and Northern Health Authority sites.

Delays in the reporting of data may cause data to change retrospectively.

For British Columbia, only data from subtyped influenza A specimens are included in the weekly number of influenza detections. The sum of A(H1N1)pdm09, A(H3), and A(UnS) positive results may not equal the sum of total Flu A positive results.

Due to different testing protocols of laboratories across Canada, influenza A subtype detection counts may not be included in total influenza A detection counts, as some subtype detections are not available through routine testing but are subsequently reported if further subtype testing is conducted. In these instances, subtype counts do not reflect influenza A detections intended to be captured by routine surveillance, and are excluded from total detections and percent positivity.

**Table 2: Cumulative respiratory virus detections from August 29, 2021 to August 13, 2022 (surveillance week 2021-35 to 2022-32)**

Reporting Laboratory	Flu Tested	A(H1)pdm09 Positive	A(H3) Positive	A(UnS) Positive	Total Flu A Positive	Total Flu B Positive	RSV Tested	RSV Positive	HPIV Tested	HPIV 1 Positive	HPIV 2 Positive	HPIV 3 Positive	HPIV 4 Positive	Other HPIV Positive	ADV Tested	ADV Positive	HMPV Tested	HMPV Positive	EV/RV Tested	EV/RV Positive	HCoV Tested	HCoV Positive
Newfoundland	15542	0	135	192	327	0	15540	237	15543	1	35	116	1	314	15551	58	15537	102	15604	2174	1324	22
Prince Edward Island	2737	0	48	17	65	0	2737	262	2692	1	1	162	32	1	2737	74	2737	109	2737	639	2737	140
Nova Scotia	26605	0	2	420	422	9	26608	414	2034	1	4	44	32	0	2049	28	2049	63	2049	188	2049	50
New Brunswick	20960	0	111	384	495	0	13311	369	3651	1	11	49	29	0	3644	59	3651	48	3651	150	3560	23
<b>Atlantic</b>	<b>65844</b>	<b>0</b>	<b>296</b>	<b>1013</b>	<b>1309</b>	<b>9</b>	<b>58196</b>	<b>1282</b>	<b>23920</b>	<b>4</b>	<b>51</b>	<b>371</b>	<b>94</b>	<b>315</b>	<b>23981</b>	<b>219</b>	<b>23974</b>	<b>322</b>	<b>24041</b>	<b>3151</b>	<b>9670</b>	<b>235</b>
Région Nord-Est	37514	45	1	2194	2240	28	16623	1482	852	2	1	14	1	0	943	19	456	17	N.C.	N.C.	1287	24
Québec-Chaudière-Appalaches	15246	0	0	1432	1432	59	16062	1019	1908	1	19	25	19	0	5861	156	5693	139	N.C.	N.C.	3333	116
Centre-du-Québec	15356	0	3	1291	1294	11	13615	1108	1544	7	8	35	4	0	1544	43	1552	32	N.C.	N.C.	1537	31
Montréal-Laval	41152	0	5	1561	1566	10	35288	2559	11421	34	102	177	12	0	11456	612	11418	469	N.C.	N.C.	11834	264
Ouest du Québec	9338	0	6	656	662	0	9280	949	350	3	8	9	7	0	343	27	339	16	N.C.	N.C.	339	8
Montréal	7760	0	0	320	320	1	6469	413	0	0	0	0	0	0	0	0	0	0	N.C.	N.C.	0	0
<b>Province of Québec</b>	<b>126366</b>	<b>45</b>	<b>15</b>	<b>7454</b>	<b>7514</b>	<b>109</b>	<b>97337</b>	<b>7530</b>	<b>16075</b>	<b>47</b>	<b>138</b>	<b>260</b>	<b>43</b>	<b>0</b>	<b>20147</b>	<b>857</b>	<b>19458</b>	<b>673</b>	<b>N.C.</b>	<b>N.C.</b>	<b>18330</b>	<b>443</b>
P.H.O.L. - Ottawa	7290	2	81	1	84	0	7290	1442	7290	0	0	0	0	749	7290	313	7288	61	7290	2265	7288	298
EORLA	9412	0	0	176	176	0	9387	670	1421	0	3	31	13	0	1421	29	1102	35	1421	228	1079	33
P.H.O.L. - Kingston	1777	0	220	0	9	0	1784	148	1781	0	0	0	0	145	1782	31	1763	47	1781	396	1763	101
UHN / Mount Sinai Hospital	23281	0	0	57	57	5	23282	127	777	0	1	0	0	0	777	1	777	2	777	21	777	13
P.H.O.L. - Toronto	12624	2	398	2	131	0	12610	313	12610	0	0	0	0	477	12616	193	12600	269	12610	1379	12601	503
Sick Kids Hospital - Toronto	839	0	0	0	0	0	0	0	839	0	2	68	1	0	839	12	839	1	839	233	839	10
Sunnybrook & Women's College HSC	0	0	0	0	0	0	0	0	0	0	0	0	0	0	0	0	0	0	0	0	0	0
P.H.O.L. - Sault Ste. Marie	402	0	4	1	4	0	401	13	401	0	0	0	0	10	401	4	401	2	401	69	401	23
P.H.O.L. - Timmins	567	0	17	0	10	0	567	28	567	0	0	0	0	23	567	1	566	8	567	46	566	33
St. Joseph's - London	13456	0	0	73	73	0	13459	792	11902	0	0	7	0	101	11902	167	11902	123	11856	694	580	4
P.H.O.L. - London	4353	0	57	11	60	0	4352	476	4352	0	0	0	0	201	4352	100	4349	116	4352	542	4349	303
P.H.O.L. - Orillia	1192	0	9	1	10	0	1192	156	1192	0	0	0	0	81	1192	46	1189	77	1192	294	1189	81
P.H.O.L. - Thunder Bay	385	0	6	0	5	0	385	27	385	0	0	0	0	26	385	1	385	13	385	64	385	37
P.H.O.L. - Sudbury	407	0	6	0	6	0	407	12	407	0	0	0	0	12	407	3	407	7	407	37	407	14
P.H.O.L. - Hamilton	2351	0	25	2	23	0	2346	79	2346	0	0	0	0	78	2347	26	2346	64	2346	302	2346	119
P.H.O.L. - Peterborough	761	0	2	0	2	0	761	70	754	0	0	0	0	20	754	10	751	15	754	127	751	45
St. Joseph's - Hamilton	24329	0	4	237	241	1	24323	1651	24323	5	0	663	0	0	24323	234	24323	263	24323	2098	0	0
<b>Province of Ontario</b>	<b>103426</b>	<b>4</b>	<b>829</b>	<b>561</b>	<b>891</b>	<b>6</b>	<b>102546</b>	<b>6004</b>	<b>71347</b>	<b>5</b>	<b>6</b>	<b>769</b>	<b>14</b>	<b>1923</b>	<b>71355</b>	<b>1171</b>	<b>70988</b>	<b>1103</b>	<b>71301</b>	<b>8795</b>	<b>35321</b>	<b>1617</b>
Manitoba	59861	1	86	487	574	0	59861	1463	4260	3	16	87	40	0	4260	87	5746	89	4260	599	5552	107
Province of Saskatchewan	32158	2	482	296	780	0	32122	1767	6977	1	26	234	113	0	6977	150	6977	211	6977	1083	6966	315
Province of Alberta	99480	10	1841	855	2706	3	77986	3742	40825	10	193	996	280	0	40812	470	40798	636	40363	4664	40825	1574
<b>Prairies</b>	<b>191499</b>	<b>13</b>	<b>2409</b>	<b>1638</b>	<b>4060</b>	<b>3</b>	<b>169969</b>	<b>6972</b>	<b>52062</b>	<b>14</b>	<b>235</b>	<b>1317</b>	<b>433</b>	<b>0</b>	<b>52049</b>	<b>707</b>	<b>53521</b>	<b>936</b>	<b>51600</b>	<b>6346</b>	<b>53343</b>	<b>1996</b>
<b>British Columbia</b>	<b>221056</b>	<b>15</b>	<b>979</b>	<b>7</b>	<b>1453</b>	<b>96</b>	<b>215483</b>	<b>9505</b>	<b>31030</b>	<b>14</b>	<b>44</b>	<b>1187</b>	<b>361</b>	<b>194</b>	<b>31030</b>	<b>657</b>	<b>31026</b>	<b>771</b>	<b>30433</b>	<b>4757</b>	<b>30451</b>	<b>1016</b>
Yukon	5503	1	5	2	14	7	5512	308	N.C.	N.C.	N.C.	N.C.	N.C.	N.C.	N.C.	N.C.	N.C.	N.C.	N.C.	N.C.	N.C.	N.C.
Northwest Territories	2204	0	206	1	207	0	2163	237	142	0	1	3	0	0	142	3	142	0	2112	278	142	1
Nunavut	16999	0	403	7	410	0	16997	441	N.C.	N.C.	N.C.	N.C.	N.C.	N.C.	N.C.	N.C.	N.C.	N.C.	N.C.	N.C.	N.C.	N.C.
<b>Territories</b>	<b>24706</b>	<b>1</b>	<b>614</b>	<b>10</b>	<b>631</b>	<b>7</b>	<b>24672</b>	<b>986</b>	<b>206</b>	<b>0</b>	<b>1</b>	<b>7</b>	<b>0</b>	<b>0</b>	<b>206</b>	<b>7</b>	<b>206</b>	<b>0</b>	<b>2176</b>	<b>295</b>	<b>189</b>	<b>2</b>
<b>CANADA</b>	<b>732897</b>	<b>78</b>	<b>5142</b>	<b>10683</b>	<b>15858</b>	<b>230</b>	<b>668203</b>	<b>32279</b>	<b>194640</b>	<b>84</b>	<b>475</b>	<b>3911</b>	<b>945</b>	<b>2432</b>	<b>198768</b>	<b>3618</b>	<b>199173</b>	<b>3805</b>	<b>179551</b>	<b>23344</b>	<b>147304</b>	<b>5309</b>

The data in the RVDSS report represent surveillance data available at the time of writing. Data not collected by reporting lab denoted by N.C.

Note: Included in the cumulative detections this season are 11 co-infections of influenza A and B (total of 22 detections) that are suspected to be associated with recent live attenuated influenza vaccine (LAIV) receipt. Co-infections known or reported to be associated with recent LAIV are removed by the submitting laboratory or by PHAC beginning in week 44 as they do not represent community transmission of seasonal influenza viruses.

The reporting laboratory previously listed as CHEO - Ottawa is now listed as EORLA to better reflect data submitted by this provider.

Specimens from Yukon (YT) are sent to reference laboratories in British Columbia and reported results reflect specimens identified as originating from YT.

Results from British Columbia comprise of specimens from the following sites: BC Children's and Women's Hospital, Children's and Women's Hospital Laboratory, Fraser Health Medical Microbiology Laboratory, Island Health, Providence Health Care, Powell River Hospital, St. Paul's Hospital, Vancouver General Hospital, Victoria General Hospital, BCCDC Public Health Laboratory, Interior Health Authority sites and Northern Health Authority sites.

Delays in the reporting of data may cause data to change retrospectively. Due to these delays, the sum of weekly report totals do not add up to cumulative totals.

For British Columbia, only data from subtyped influenza A specimens are included in the weekly number of influenza detections. The sum of A(H1N1)pdm09, A(H3), and A(UnS) positive results may not equal the sum of total Flu A positive results.

Due to different testing protocols of laboratories across Canada, influenza A subtype detection counts may not be included in total influenza A detection counts, as some subtype detections are not available through routine testing but are subsequently reported if further subtype testing is conducted. In these instances, subtype counts do not reflect influenza A detections intended to be captured by routine surveillance, and are excluded from total detections and percent positivity.

**Figure 2: Number of positive respiratory virus tests reported by participating laboratories in Canada by surveillance week**

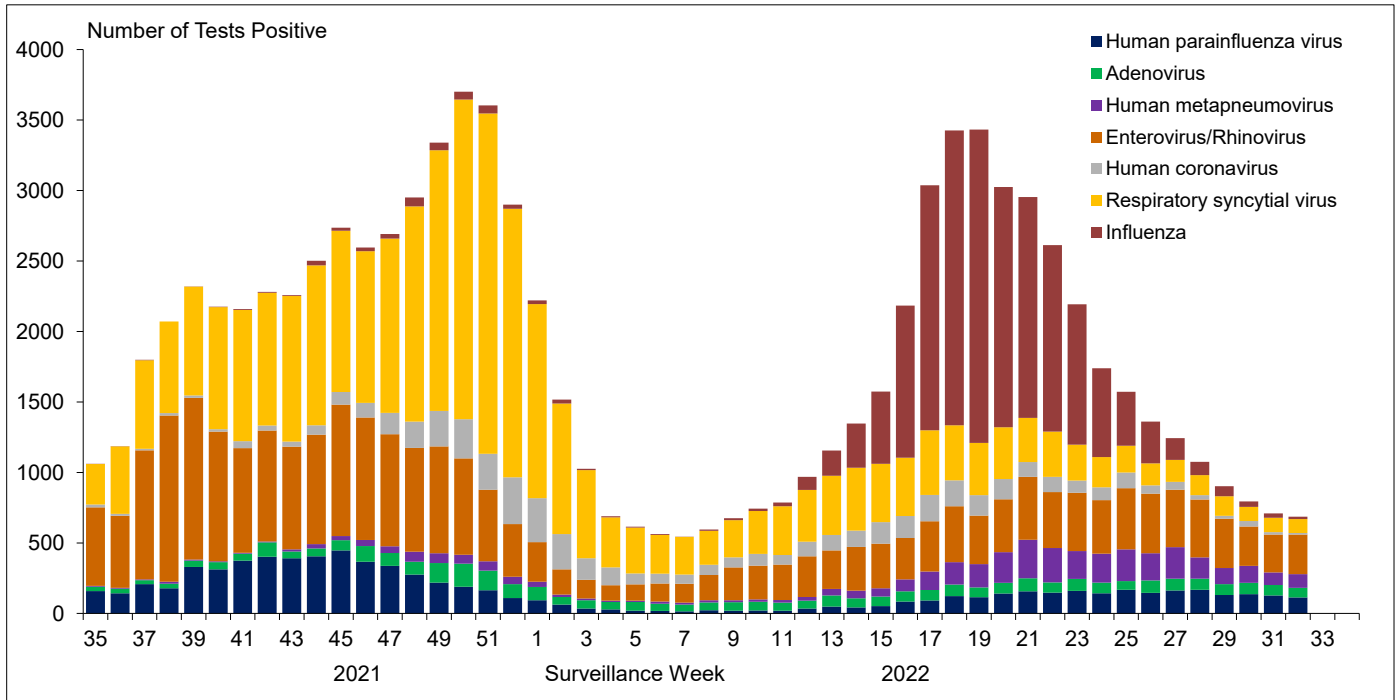


Figure 3: Positive Influenza (Flu) tests (%) in Canada by region by surveillance week

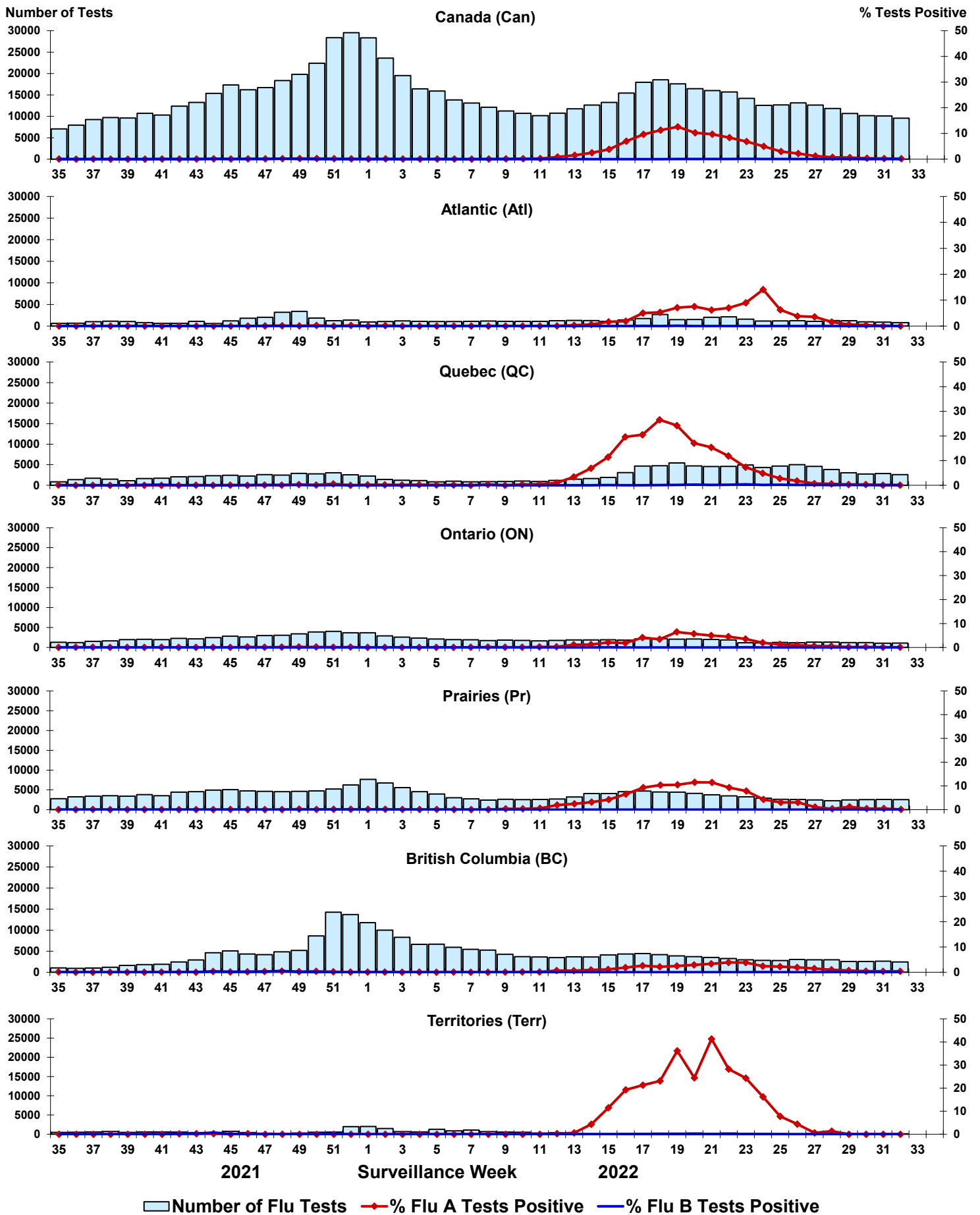


Figure 4: Positive Respiratory syncytial virus (RSV) tests (%) in Canada by region by surveillance week

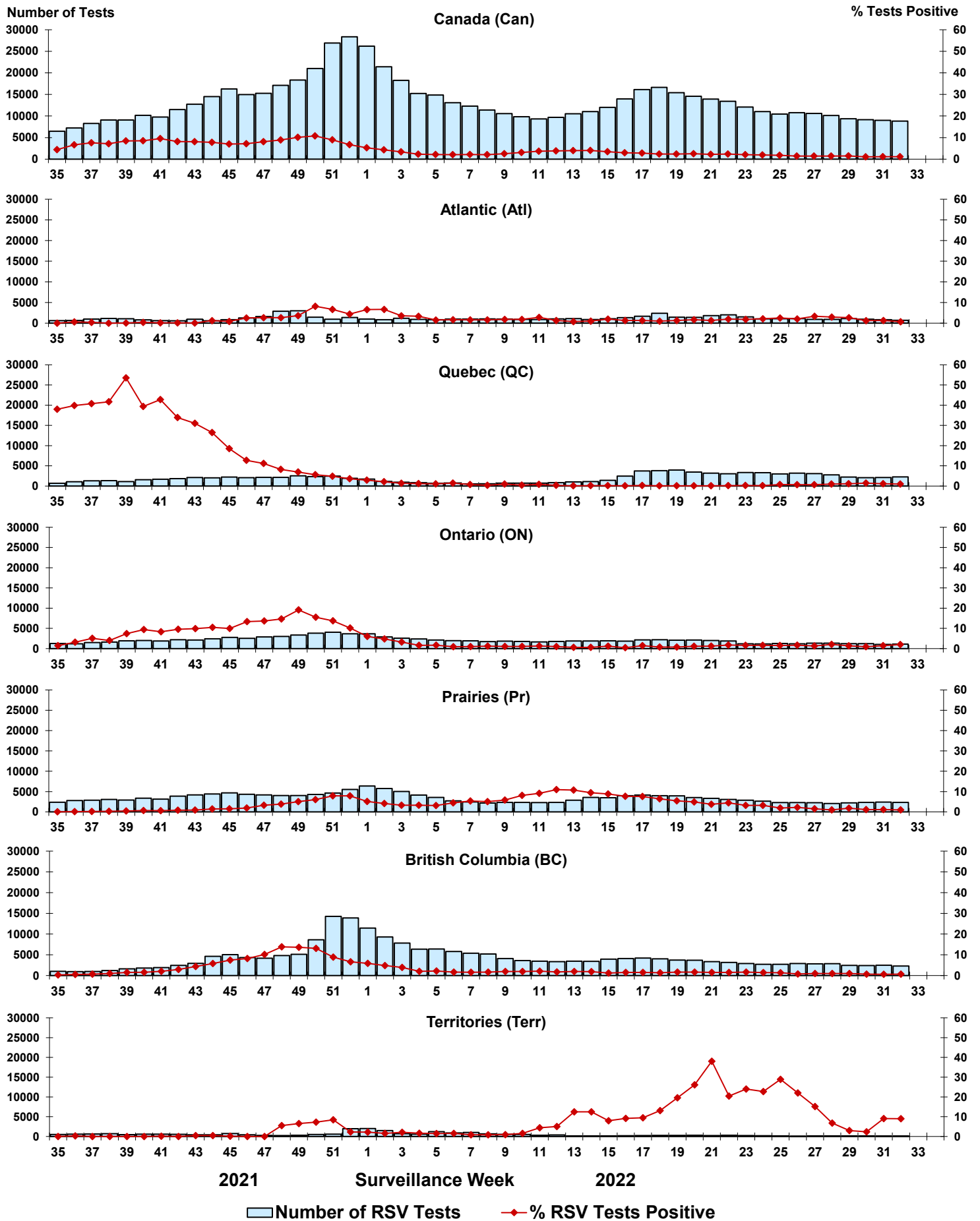


Figure 5: Positive Human parainfluenza virus (HPIV) tests (%) in Canada by region by surveillance week

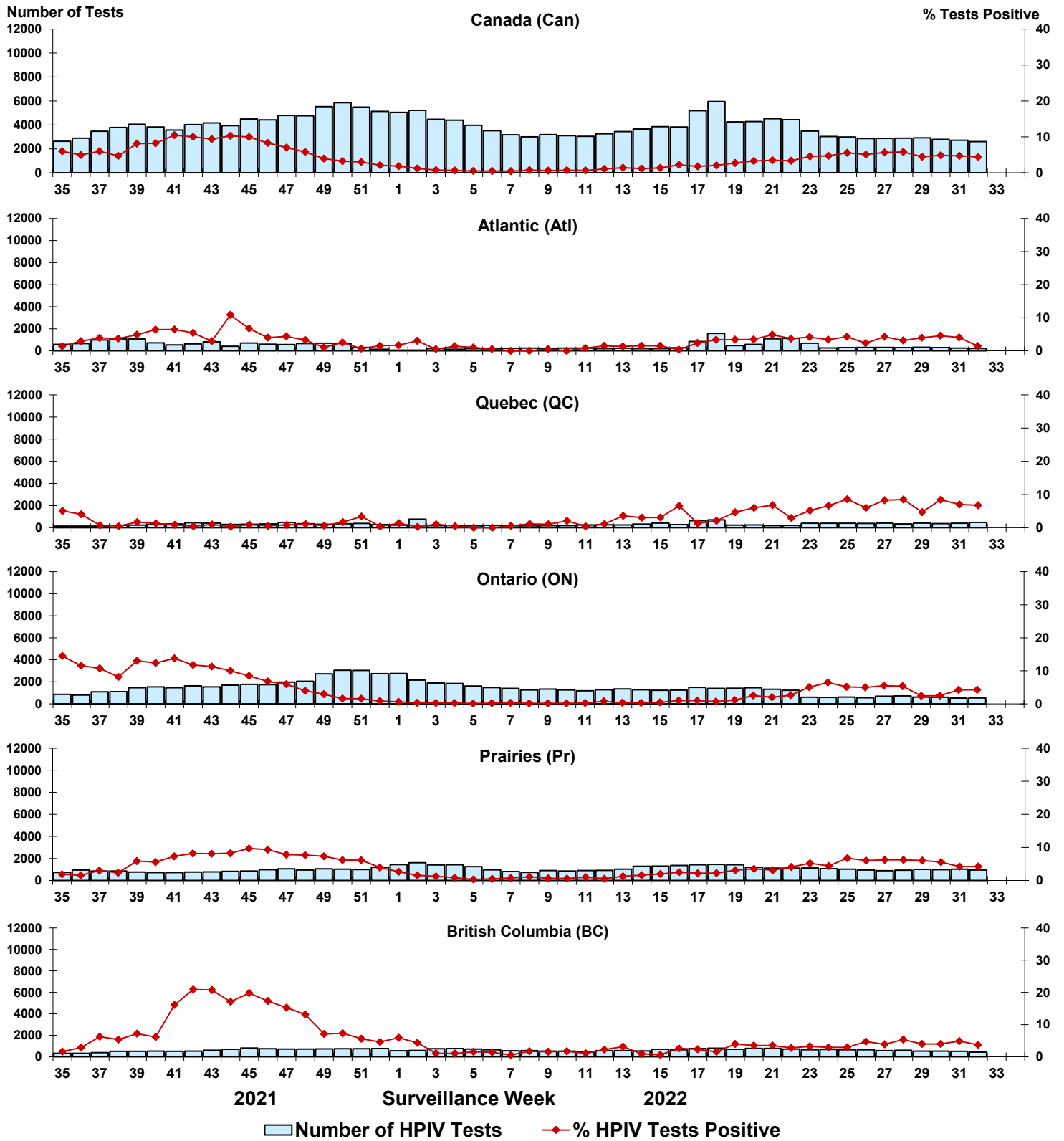




Figure 6: Positive Adenovirus (ADV) tests (%) in Canada by region by surveillance week

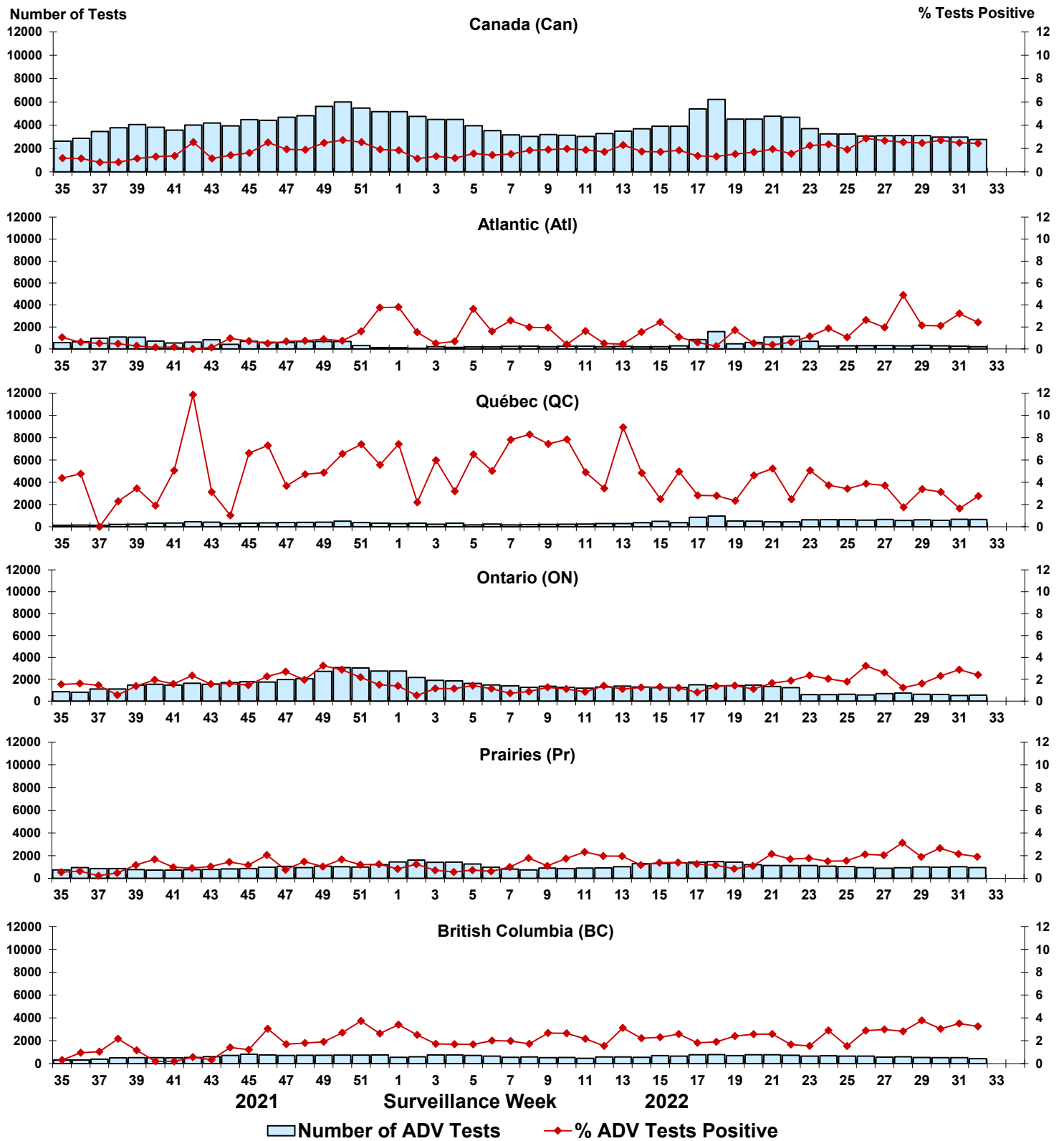


Figure 7: Positive Human metapneumovirus (HMPV) tests (%) in Canada by region by surveillance week

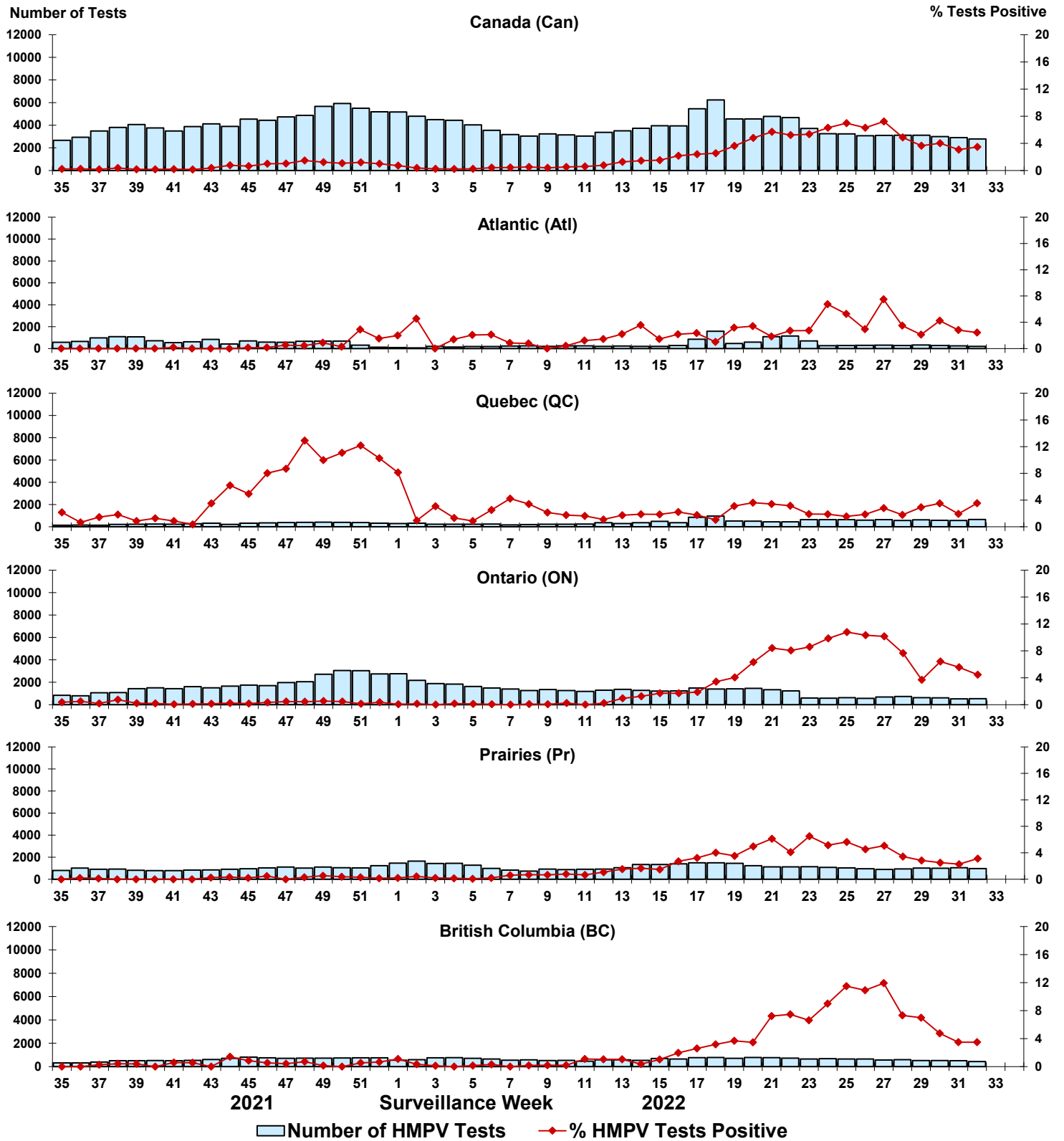


Figure 8: Positive Enterovirus/Rhinovirus (EV/RV) tests (%) in Canada by region by surveillance week

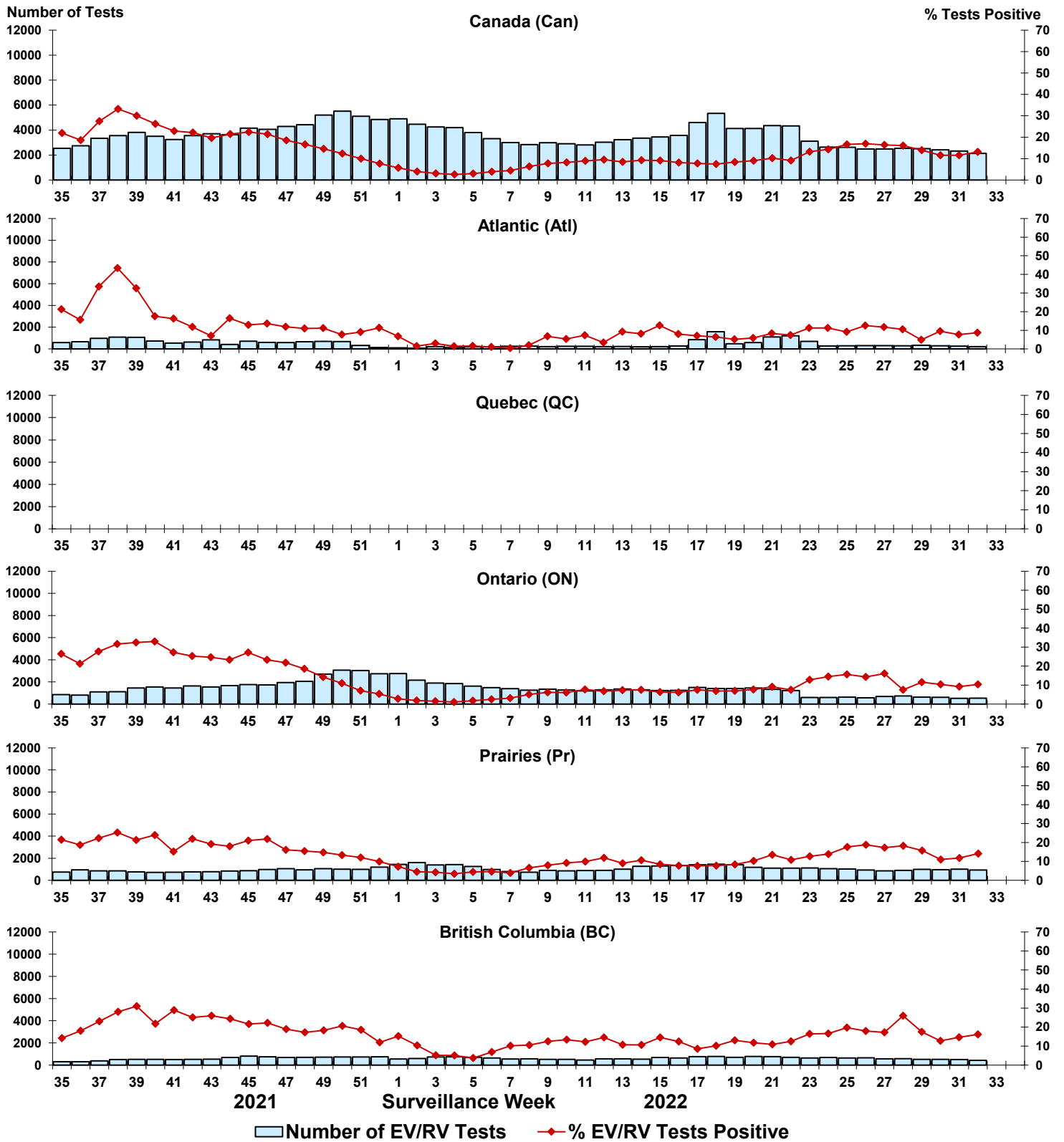


Figure 9: Positive Human coronavirus (HCoV) tests (%) in Canada by region by surveillance week

