

# RESPIRATORY VIRUS DETECTION REPORT

October 10 to October 16, 2021  
(Surveillance Week 2021-41)



In this Respiratory Virus Report, the number of detections of coronavirus reflects only seasonal human coronaviruses, not the novel pandemic coronavirus (SARS-CoV-2) that causes COVID-19. For information on COVID-19, see the [Coronavirus disease \(COVID-19\): Outbreak update](#).

## Overall Summary

In week 41 (October 10 to October 16, 2021):

- Respiratory syncytial virus (931 detections; 10.5% positive), enterovirus/rhinovirus (716 detections; 23.4% positive), and human parainfluenza virus (353 detections; 10.4% positive) are the most common seasonal respiratory viruses detected in Canada.
  - Activity of respiratory syncytial virus remains well above expected levels. The majority of detections are found in Quebec and Eastern Ontario.
  - Activity of enterovirus/rhinovirus is decreasing and remains near expected levels for this time of year.
  - Activity of human parainfluenza virus is increasing and remains well above expected levels.
- Detections of other respiratory viruses are low.
- The number of tests performed for all viruses are above expected levels.
- 32/34 sentinel laboratories reported surveillance data.

## Abbreviations

Flu: Influenza

Flu A(H1N1)pdm09: Influenza A(H1N1)pdm09

Flu A(H3): Influenza A(H3N2)

Flu A (UnS): Influenza A(Unsubtyped)

RSV: Respiratory syncytial virus

HPIV: Human parainfluenza virus

HMPV: Human metapneumovirus

ADV: Adenovirus

EV/RV: Enterovirus/Rhinovirus

HCoV: Human coronavirus

Atl: Atlantic Canada

BC: British Columbia

Can: Canada

EORLA: Eastern Ontario Regional Laboratory Association

HSC: Health Sciences Centre

N.C.: Data not collected

N.R.: Data not reported for current week

ON: Ontario

PR: Prairies

P.H.O.L.: Public Health Ontario Laboratory

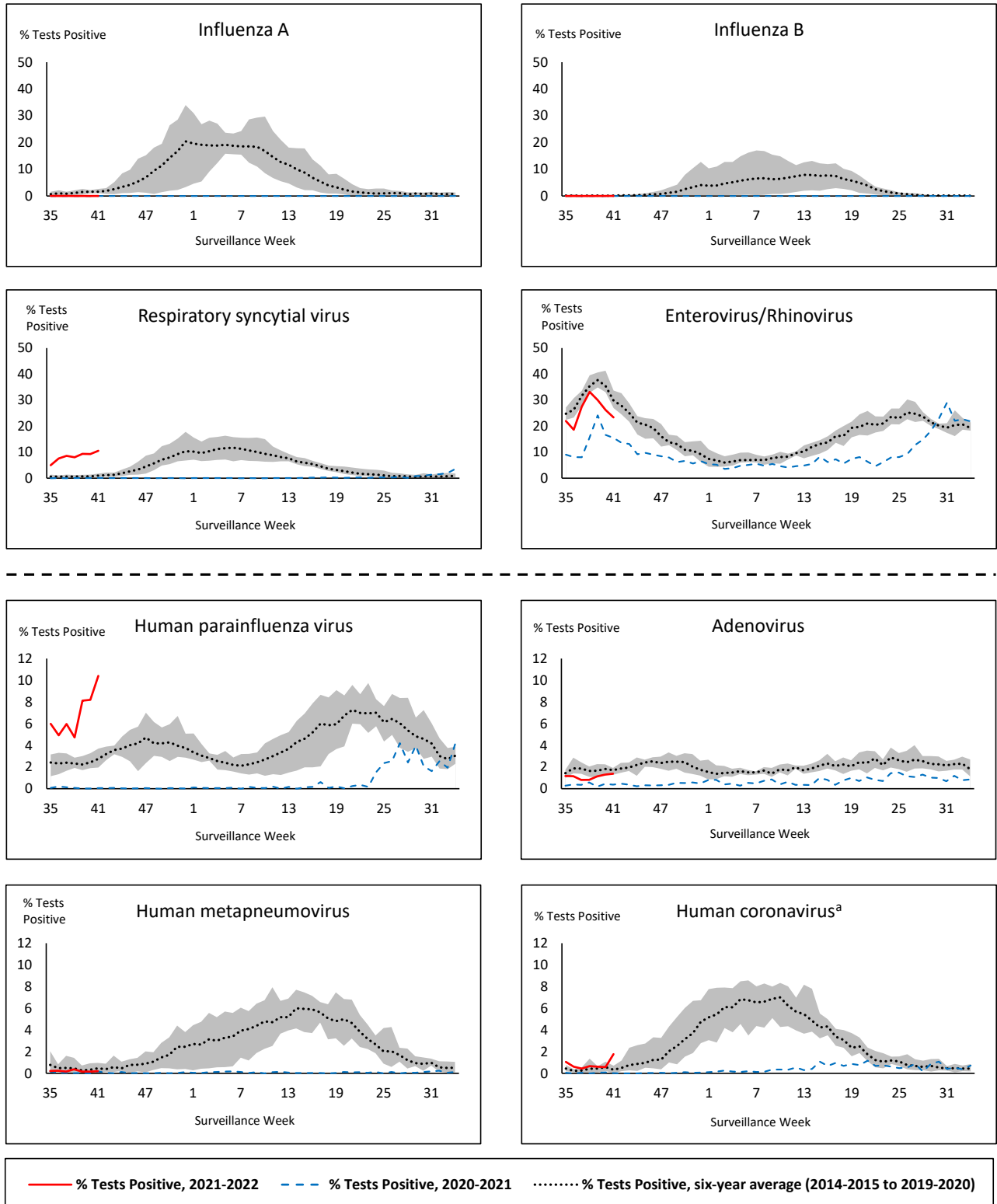
QC: Quebec

Terr: Territories of Canada

UHN: University Health Network



**Figure 1: Positive respiratory virus tests (%) reported by participating laboratories in Canada by surveillance week compared to average and range from 2014-2015 to 2019-2020 season**



Shaded area represents the maximum and minimum % of respiratory virus tests positive reported by week from seasons 2014-2015 to 2019-2020

Note: Data from week 11 of the 2019-2020 season onwards are excluded from the historical comparison due to the COVID-19 pandemic

Note: % Tests Positive scale changes across the dashed line

<sup>a</sup> Human coronavirus excludes human coronaviruses SARS-CoV, MERS-CoV and SARS-CoV-2; Includes seasonal human coronaviruses HCoV-229E, HCoV-OC43, HCoV-NL63, HCoV-HKU1.

**Table 1: Respiratory virus detections for the week ending October 16, 2021 (surveillance week 2021-41)**

Reporting Laboratory	Flu Tested	A(H1)pdm09 Positive	A(H3) Positive	A(UnS) Positive	Total Flu A Positive	Total Flu B Positive	RSV Tested	RSV Positive	HPIV Tested	HPIV 1 Positive	HPIV 2 Positive	HPIV 3 Positive	HPIV 4 Positive	Other HPIV Positive	ADV Tested	ADV Positive	HMPV Tested	HMPV Positive	EV/RV Tested	EV/RV Positive	HCov Tested	HCov Positive
Newfoundland	293	0	0	0	0	0	293	0	293	0	0	13	0	0	293	0	293	1	293	43	N.C.	N.C.
Prince Edward Island	119	0	0	0	0	0	119	0	119	0	0	21	0	0	119	0	119	0	119	35	119	4
Nova Scotia	82	0	0	0	0	0	82	1	53	0	0	1	0	0	53	1	53	0	53	8	53	0
New Brunswick	120	0	0	0	0	0	114	0	78	0	0	0	0	0	78	0	78	0	78	2	78	0
<b>Atlantic</b>	<b>614</b>	<b>0</b>	<b>0</b>	<b>0</b>	<b>0</b>	<b>0</b>	<b>608</b>	<b>1</b>	<b>543</b>	<b>0</b>	<b>0</b>	<b>35</b>	<b>0</b>	<b>0</b>	<b>543</b>	<b>1</b>	<b>543</b>	<b>1</b>	<b>543</b>	<b>88</b>	<b>250</b>	<b>4</b>
Région Nord-Est	469	0	0	0	0	0	276	146	107	0	0	3	0	0	107	7	1	0	N.C.	N.C.	107	1
Québec-Chaudière-Appalaches	183	0	0	0	0	1	246	162	39	0	0	0	0	0	39	3	39	0	N.C.	N.C.	39	0
Centre-du-Québec	122	0	0	0	0	0	221	111	48	0	0	0	0	0	48	3	48	0	N.C.	N.C.	48	0
Montréal-Laval	523	0	0	0	0	2	526	141	141	0	0	0	0	0	141	4	141	2	N.C.	N.C.	141	2
Ouest du Québec	276	0	0	0	0	0	276	120	0	0	0	0	0	0	0	0	0	0	N.C.	N.C.	0	0
Montérégie	131	0	0	0	0	0	131	37	0	0	0	0	0	0	0	0	0	0	N.C.	N.C.	0	0
<b>Province of Québec</b>	<b>1704</b>	<b>0</b>	<b>0</b>	<b>0</b>	<b>0</b>	<b>3</b>	<b>1676</b>	<b>717</b>	<b>335</b>	<b>0</b>	<b>0</b>	<b>3</b>	<b>0</b>	<b>0</b>	<b>335</b>	<b>17</b>	<b>229</b>	<b>2</b>	<b>N.C.</b>	<b>N.C.</b>	<b>335</b>	<b>3</b>
P.H.O.L. - Ottawa	340	0	0	0	0	0	340	103	340	0	0	0	0	38	340	13	340	0	340	120	340	3
EORLA	172	0	0	0	0	0	147	29	25	0	0	1	0	0	25	0	0	0	25	5	0	0
P.H.O.L. - Kingston	46	0	0	0	0	0	46	0	46	0	0	0	0	10	46	0	46	0	46	14	46	6
UHN / Mount Sinai Hospital	361	0	0	0	0	0	361	1	21	0	0	0	0	0	21	0	21	0	21	2	21	0
P.H.O.L. - Toronto	310	0	0	0	0	0	310	8	310	0	0	0	0	21	310	3	310	0	310	65	310	7
Sick Kids Hospital - Toronto	N.R.	N.R.	N.R.	N.R.	N.R.	N.R.	N.R.	N.R.	N.R.	N.R.	N.R.	N.R.	N.R.	N.R.	N.R.	N.R.	N.R.	N.R.	N.R.	N.R.	N.R.	N.R.
Sunnybrook & Women's College HSC	N.R.	N.R.	N.R.	N.R.	N.R.	N.R.	N.R.	N.R.	N.R.	N.R.	N.R.	N.R.	N.R.	N.R.	N.R.	N.R.	N.R.	N.R.	N.R.	N.R.	N.R.	N.R.
P.H.O.L. - Sault Ste. Marie	4	0	0	0	0	0	4	0	4	0	0	0	0	0	4	0	4	0	4	1	4	0
P.H.O.L. - Timmins	6	0	0	0	0	0	6	0	6	0	0	0	0	0	6	0	6	0	6	2	6	0
St. Joseph's - London	42	0	0	0	0	0	42	1	41	0	0	0	0	11	41	3	41	0	41	13	41	0
P.H.O.L. - London	78	0	0	0	0	0	78	0	78	0	0	0	0	16	78	1	78	0	78	31	78	0
P.H.O.L. - Orillia	22	0	0	0	0	0	22	0	22	0	0	0	0	5	22	0	22	0	22	9	22	0
P.H.O.L. - Thunder Bay	16	0	0	0	0	0	16	0	16	0	0	0	0	0	16	0	16	0	16	11	16	0
P.H.O.L. - Sudbury	14	0	0	0	0	0	14	0	14	0	0	0	0	0	14	0	14	0	14	0	14	0
P.H.O.L. - Hamilton	45	0	1	0	1	0	44	0	44	0	0	0	0	3	44	0	44	0	44	12	44	0
P.H.O.L. - Peterborough	33	0	0	0	0	0	33	1	33	0	0	0	0	1	33	1	33	0	33	9	33	0
St. Joseph's - Hamilton	404	0	0	0	0	0	404	13	404	0	0	83	0	0	404	2	404	1	404	83	0	0
<b>Province of Ontario</b>	<b>1893</b>	<b>0</b>	<b>1</b>	<b>0</b>	<b>1</b>	<b>0</b>	<b>1867</b>	<b>156</b>	<b>1404</b>	<b>0</b>	<b>0</b>	<b>84</b>	<b>0</b>	<b>105</b>	<b>1404</b>	<b>23</b>	<b>1379</b>	<b>1</b>	<b>1404</b>	<b>377</b>	<b>975</b>	<b>16</b>
Province of Manitoba	1687	0	0	1	1	0	1687	7	30	0	0	0	0	0	30	1	82	0	30	5	82	0
Province of Saskatchewan	285	0	0	0	0	0	285	0	74	0	0	2	0	0	74	0	74	0	74	12	74	0
Province of Alberta	1484	0	0	0	0	0	561	11	561	0	0	40	2	0	561	4	561	0	561	87	561	21
<b>Prairies</b>	<b>3456</b>	<b>0</b>	<b>0</b>	<b>1</b>	<b>1</b>	<b>0</b>	<b>2533</b>	<b>18</b>	<b>665</b>	<b>0</b>	<b>0</b>	<b>42</b>	<b>2</b>	<b>0</b>	<b>665</b>	<b>5</b>	<b>717</b>	<b>0</b>	<b>665</b>	<b>104</b>	<b>717</b>	<b>21</b>
<b>British Columbia</b>	<b>1890</b>	<b>0</b>	<b>0</b>	<b>1</b>	<b>1</b>	<b>0</b>	<b>1890</b>	<b>38</b>	<b>448</b>	<b>0</b>	<b>0</b>	<b>67</b>	<b>7</b>	<b>8</b>	<b>448</b>	<b>1</b>	<b>448</b>	<b>3</b>	<b>440</b>	<b>145</b>	<b>440</b>	<b>4</b>
Yukon	263	0	0	0	0	0	263	1	N.C.	N.C.	N.C.	N.C.	N.C.	N.C.	N.C.	N.C.	N.C.	N.C.	N.C.	N.C.	N.C.	N.C.
Northwest Territories	13	0	0	0	0	0	13	0	0	0	0	0	0	0	0	0	0	0	12	2	0	0
Nunavut	1	0	0	0	0	0	0	0	0	0	0	0	0	0	0	0	0	0	0	0	0	0
<b>Territories</b>	<b>277</b>	<b>0</b>	<b>0</b>	<b>0</b>	<b>0</b>	<b>0</b>	<b>276</b>	<b>1</b>	<b>0</b>	<b>0</b>	<b>0</b>	<b>0</b>	<b>0</b>	<b>0</b>	<b>0</b>	<b>0</b>	<b>0</b>	<b>0</b>	<b>12</b>	<b>2</b>	<b>0</b>	<b>0</b>
<b>CANADA</b>	<b>9834</b>	<b>0</b>	<b>1</b>	<b>2</b>	<b>3</b>	<b>3</b>	<b>8850</b>	<b>931</b>	<b>3395</b>	<b>0</b>	<b>0</b>	<b>231</b>	<b>9</b>	<b>113</b>	<b>3395</b>	<b>47</b>	<b>3316</b>	<b>7</b>	<b>3064</b>	<b>716</b>	<b>2717</b>	<b>48</b>

The data in the RVDSS report represent surveillance data available at the time of writing. Data missing from the current week are denoted by N.R. Data not collected by reporting lab denoted by N.C.

The reporting laboratory previously listed as CHEO - Ottawa is now listed as EORLA to better reflect data submitted by this provider.

Specimens from Yukon (YT), Northwest Territories (NT) and Nunavut (NU) are sent to reference laboratories in other provinces and reported results reflect specimens identified as originating from YT, NT or NU.

Results from British Columbia comprise of specimens from the following sites: BC Children's and Women's Hospital, Children's and Women's Hospital Laboratory, Fraser Health Medical Microbiology Laboratory, Island Health, Providence Health Care, Powell River Hospital, St. Paul's Hospital, Vancouver General Hospital, Victoria General Hospital, BCCDC Public Health Laboratory, Interior Health Authority sites and Northern Health Authority sites.

Delays in the reporting of data may cause data to change retrospectively.

Influenza co-detections may cause the sum of A(H1)pdm09, A(H3), and A(UnS) positive results to exceed the sum of Total Flu A Positive results.



**Figure 2: Number of positive respiratory virus tests reported by participating laboratories in Canada by surveillance week**

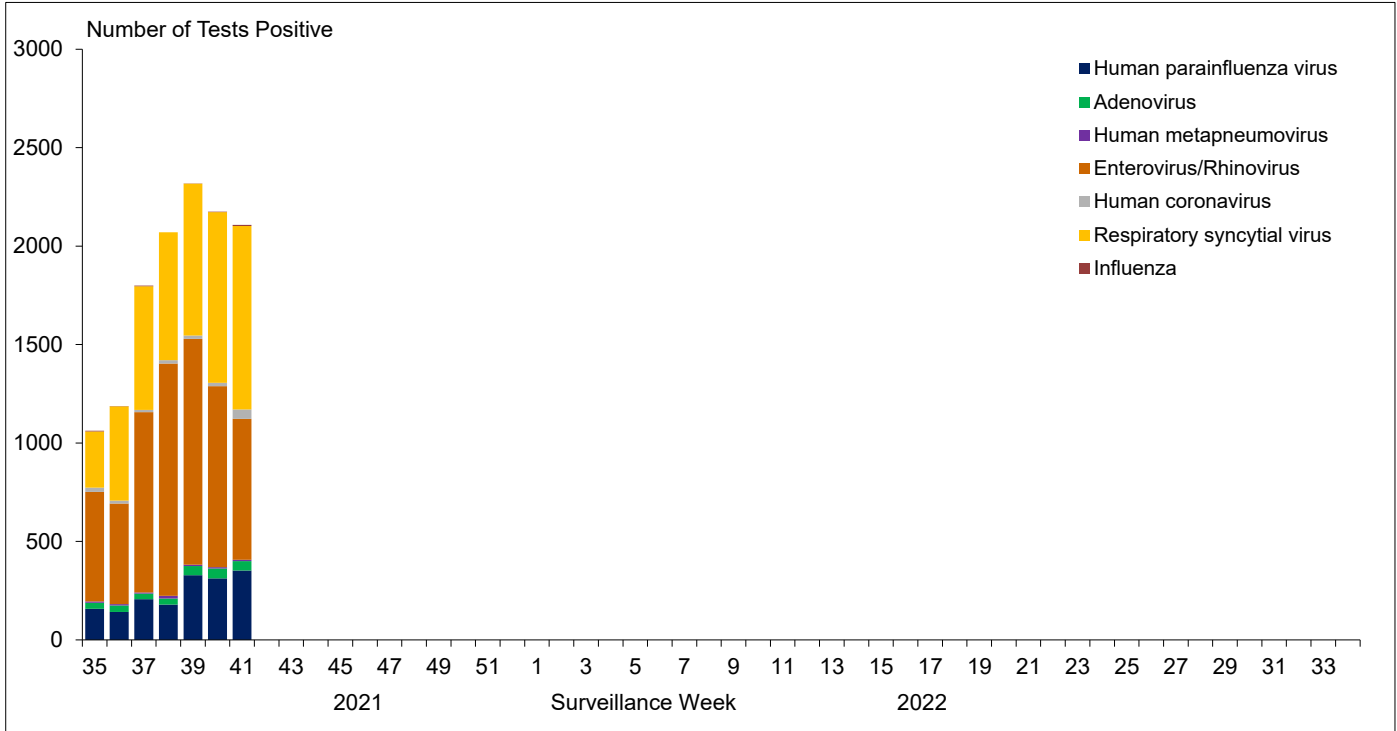


Figure 3: Positive Influenza (Flu) tests (%) in Canada by region by surveillance week

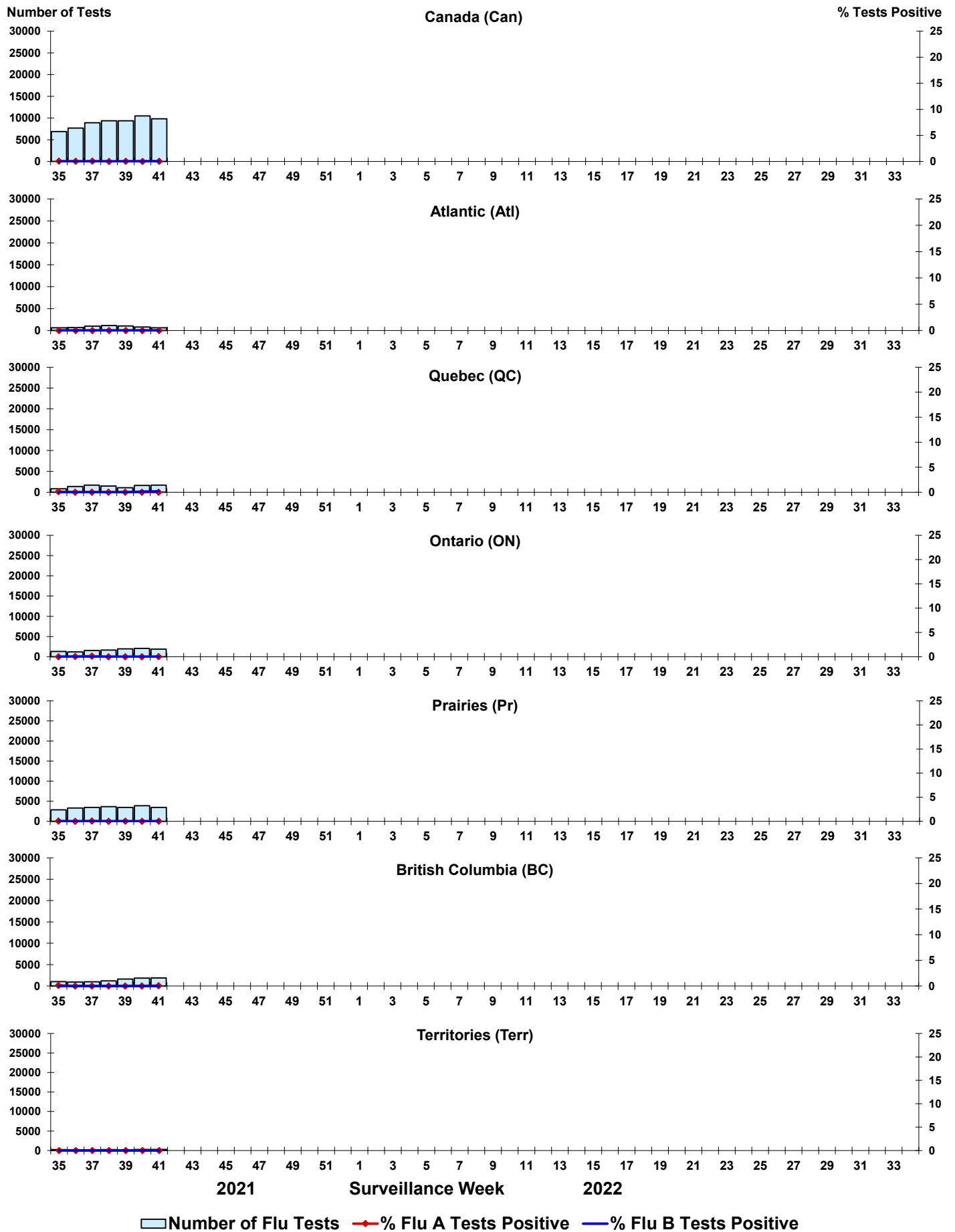


Figure 4: Positive Respiratory syncytial virus (RSV) tests (%) in Canada by region by surveillance week

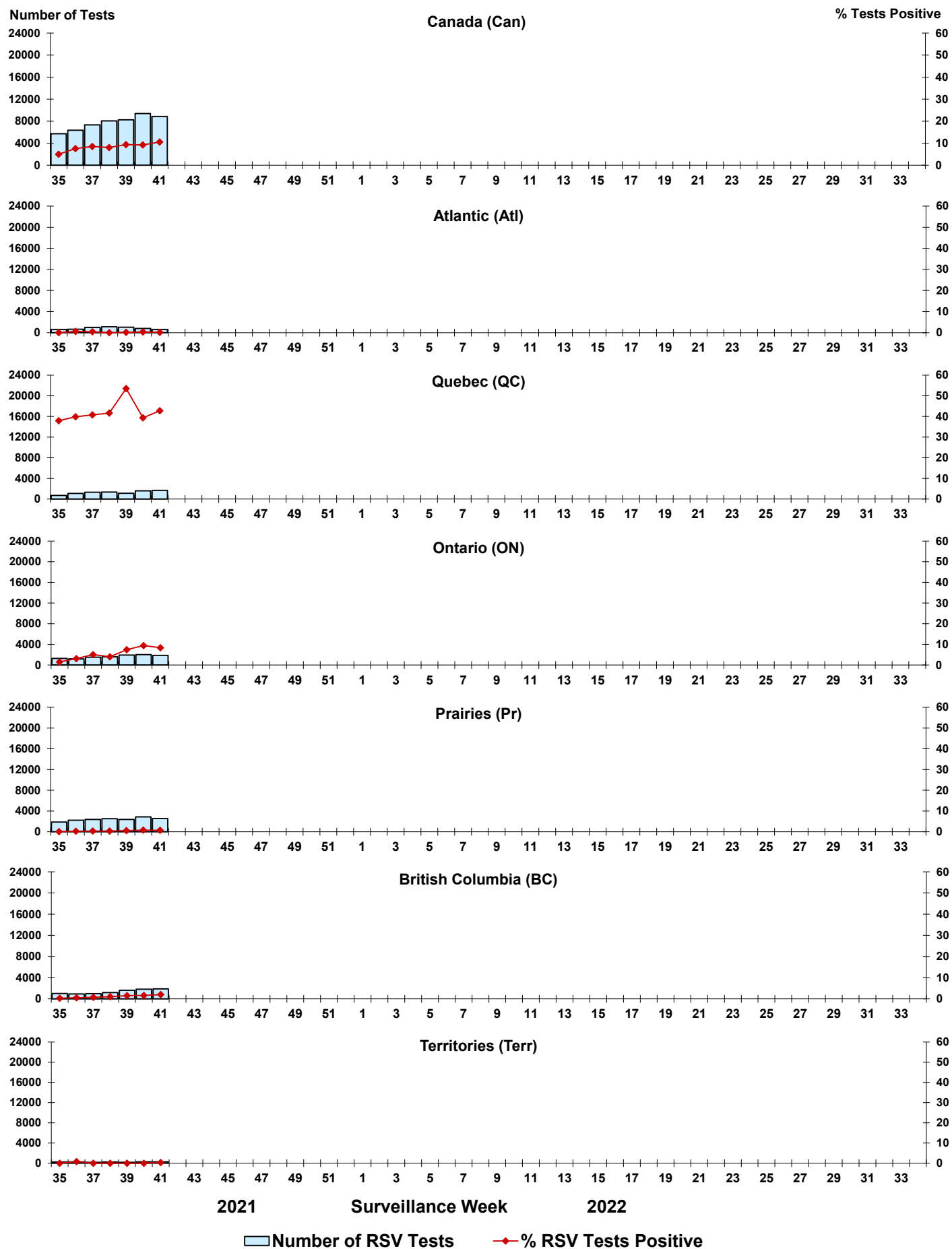


Figure 5: Positive Human parainfluenza virus (HPIV) tests (%) in Canada by region by surveillance week

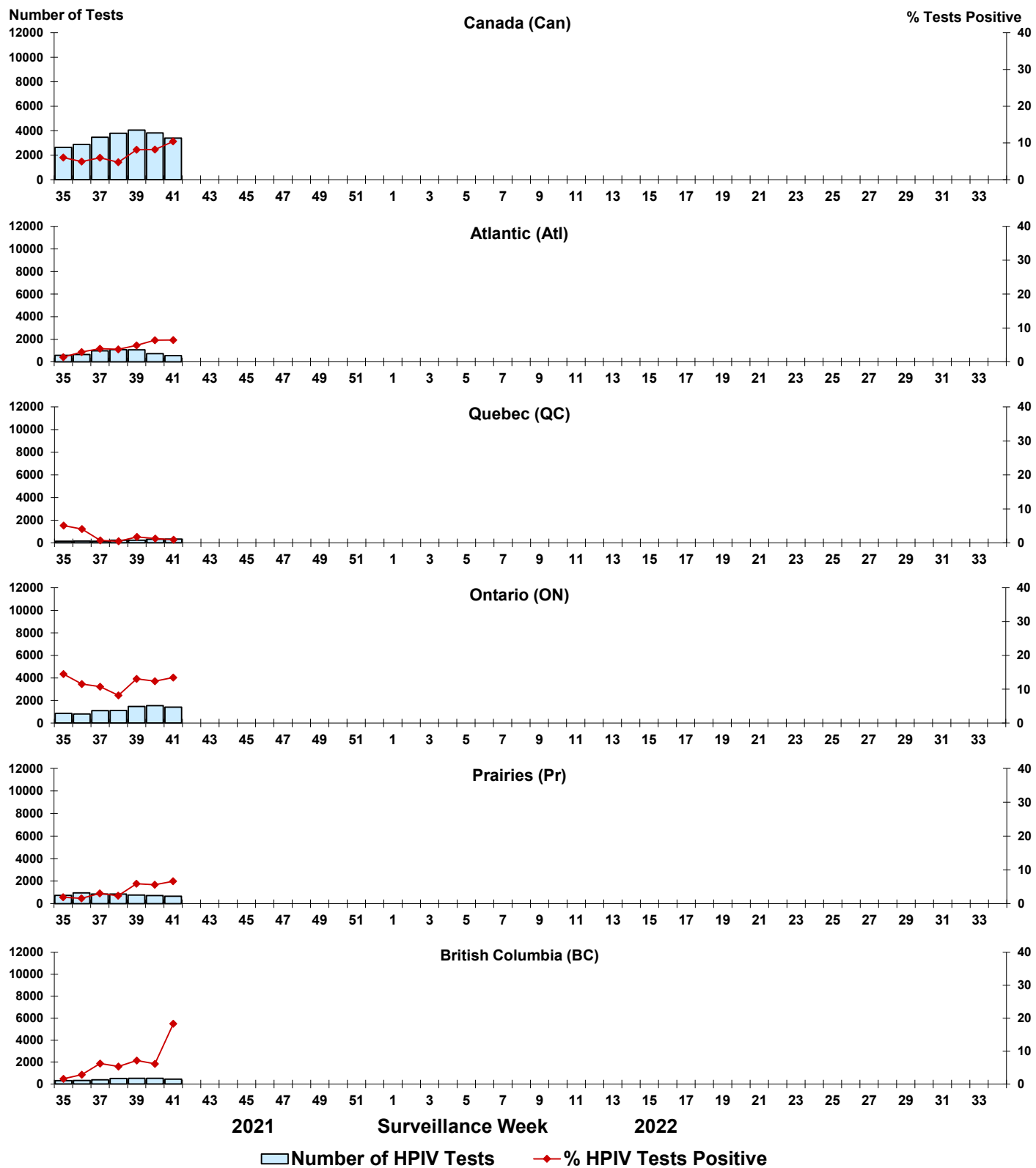




Figure 6: Positive Adenovirus (ADV) tests (%) in Canada by region by surveillance week

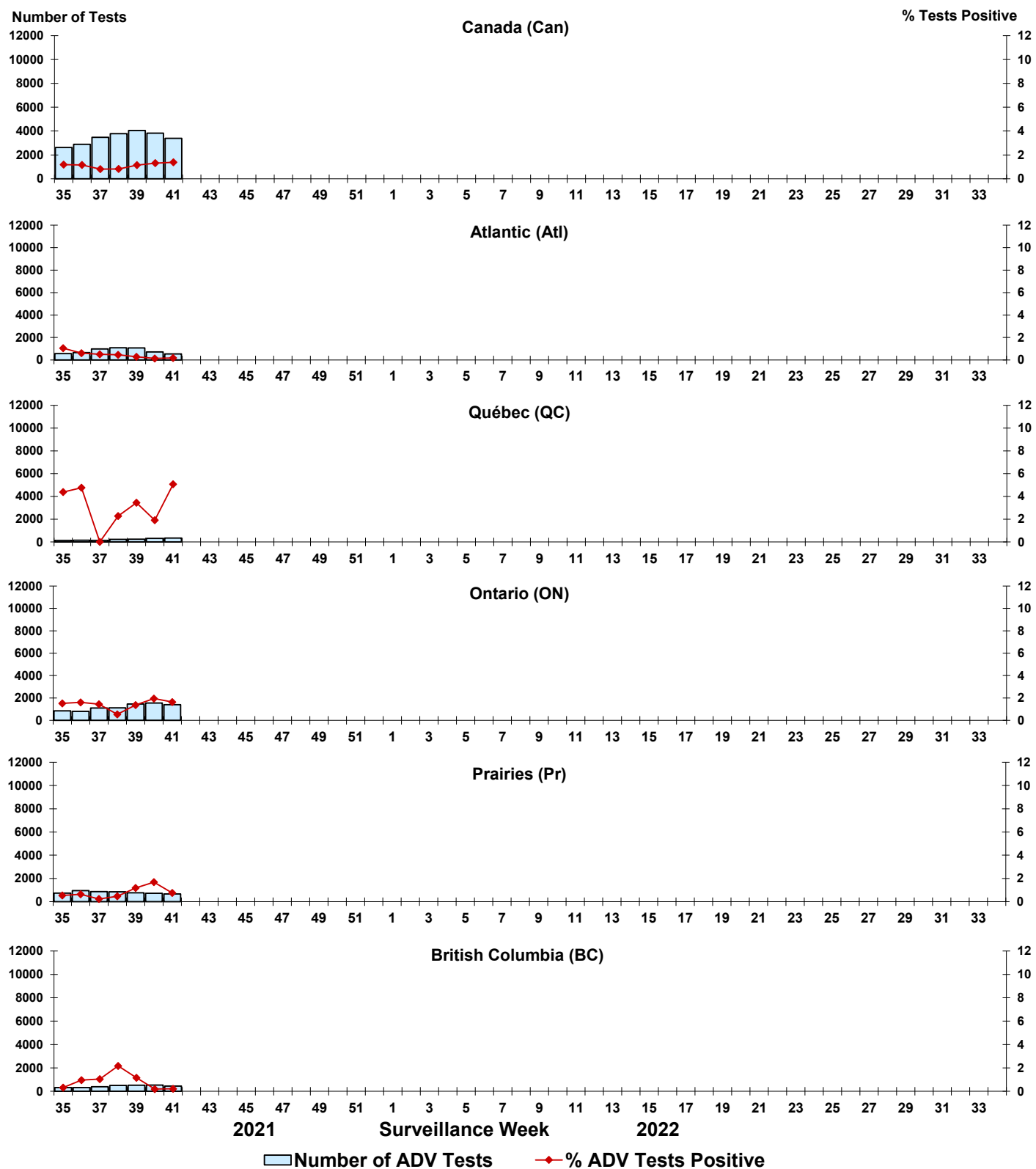


Figure 7: Positive Human metapneumovirus (HMPV) tests (%) in Canada by region by surveillance week

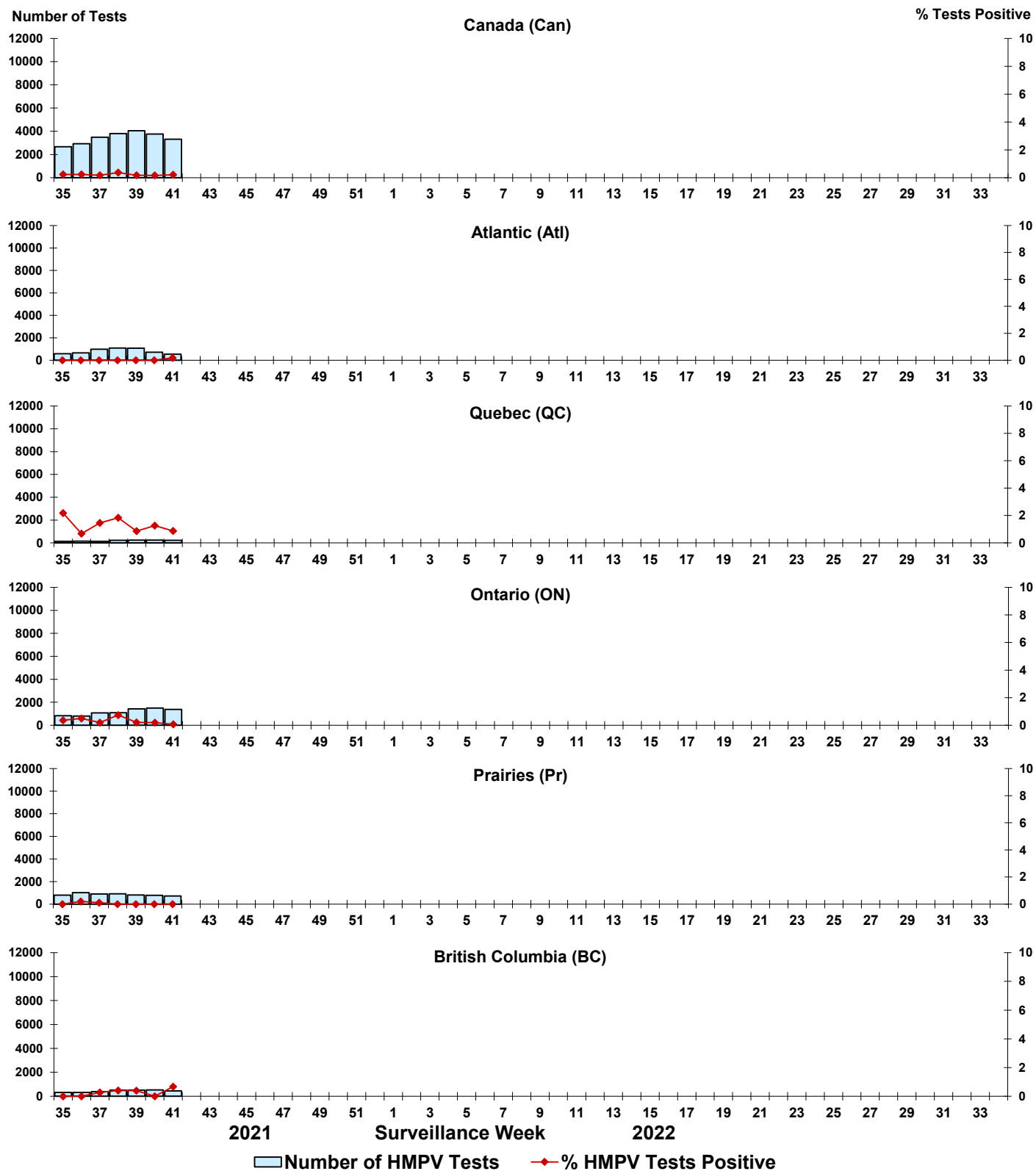


Figure 8: Positive Enterovirus/Rhinovirus (EV/RV) tests (%) in Canada by region by surveillance week

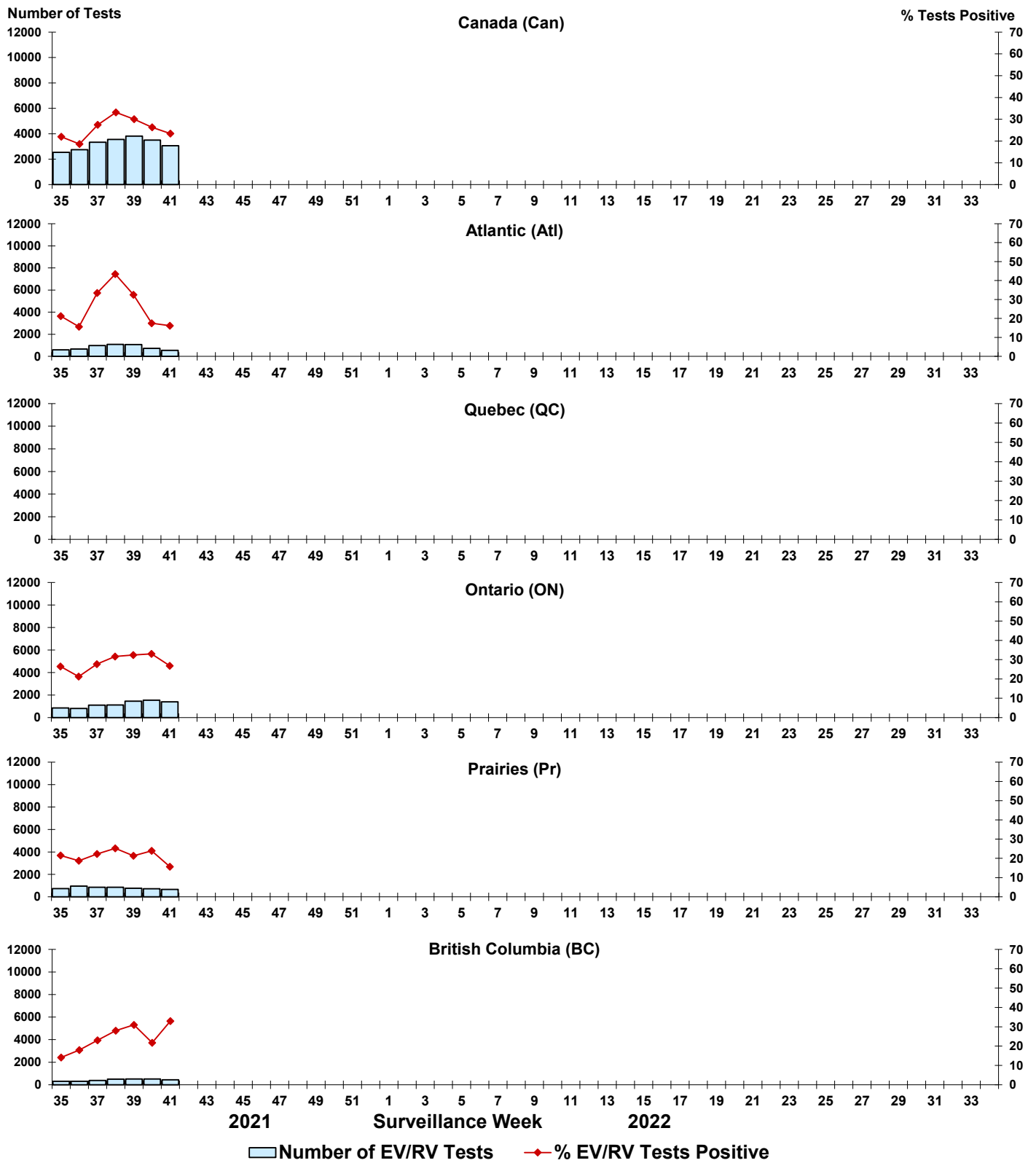


Figure 9: Positive Human coronavirus (HCoV) tests (%) in Canada by region by surveillance week

