

# Respiratory Virus Report, Week 5 - ending February 6, 2021

The Respiratory Virus Detection Surveillance System collects data from select laboratories across Canada on the number of tests performed and the number of tests positive for influenza and other respiratory viruses. Data are reported on a weekly basis year-round to the Centre for Immunization and Respiratory Infectious Diseases (CIRID), Public Health Agency of Canada. These data are also summarized in the weekly FluWatch report.

In this Respiratory Virus Report, the number of detections of coronavirus reflects only seasonal human coronaviruses, not the novel pandemic coronavirus (SARS-CoV2) that causes COVID-19. For information on COVID-19, see the [Coronavirus disease \(COVID-19\): Outbreak](#)

**Table 1: Respiratory Virus Detections/Isolations for the week ending February 6, 2021 (Reporting Week 202105)**

Reporting Laboratory	Flu Tested	A(H1N1)pdm09 Positive	A(H3) Positive	A(UnS) Positive	Total Flu A Positive	Total Flu B Positive	RSV Tested	RSV Positive	PIV Tested	PIV 1 Positive	PIV 2 Positive	PIV 3 Positive	PIV 4 Positive	Other PIV Positive	Adeno Tested	Adeno Positive	hMPV Tested	hMPV Positive	Entero/Rhino Tested	Entero/Rhino Positive	Coron Tested	Coron Positive
Newfoundland	252	0	0	0	0	0	252	0	252	0	0	0	0	0	252	4	252	0	252	40	N.A.	N.A.
Prince Edward Island	139	0	0	0	0	0	139	0	139	0	0	0	0	0	139	2	139	0	139	9	139	0
Nova Scotia	31	0	0	0	0	0	31	0	5	0	0	0	0	0	5	0	5	0	5	0	5	0
New Brunswick	3308	0	0	0	0	0	480	0	21	0	0	0	0	0	21	0	21	0	21	0	21	0
<b>Atlantic</b>	<b>3730</b>	<b>0</b>	<b>0</b>	<b>0</b>	<b>0</b>	<b>0</b>	<b>902</b>	<b>0</b>	<b>417</b>	<b>0</b>	<b>0</b>	<b>0</b>	<b>0</b>	<b>0</b>	<b>417</b>	<b>6</b>	<b>417</b>	<b>0</b>	<b>417</b>	<b>49</b>	<b>165</b>	<b>0</b>
Région Nord-Est	185	0	0	0	0	0	20	0	0	0	0	0	0	0	0	0	0	0	N.A.	N.A.	0	0
Québec-Chaudière-Appalaches	25	0	0	0	0	0	25	0	19	0	0	0	0	0	19	0	19	0	N.A.	N.A.	19	1
Centre-du-Québec	21	0	0	0	0	0	25	0	6	0	0	0	0	0	6	0	6	0	N.A.	N.A.	6	0
Montréal-Laval	212	0	0	0	0	0	116	2	87	0	0	0	0	0	87	2	87	0	N.A.	N.A.	87	1
Ouest du Québec	24	0	0	0	0	0	20	0	0	0	0	0	0	0	0	0	0	0	N.A.	N.A.	0	0
Montérégie	1	0	0	0	0	0	1	0	0	0	0	0	0	0	0	0	0	0	N.A.	N.A.	0	0
<b>Province of Québec</b>	<b>468</b>	<b>0</b>	<b>0</b>	<b>0</b>	<b>0</b>	<b>0</b>	<b>207</b>	<b>2</b>	<b>112</b>	<b>0</b>	<b>0</b>	<b>0</b>	<b>0</b>	<b>0</b>	<b>112</b>	<b>2</b>	<b>112</b>	<b>0</b>	<b>N.A.</b>	<b>N.A.</b>	<b>112</b>	<b>2</b>
P.H.O.L. - Ottawa	12	0	0	0	0	0	12	0	10	0	0	0	0	0	10	0	10	0	10	0	10	0
CHEO - Ottawa	N.A.	N.A.	N.A.	N.A.	N.A.	N.A.	N.A.	N.A.	N.A.	N.A.	N.A.	N.A.	N.A.	N.A.	N.A.	N.A.	N.A.	N.A.	N.A.	N.A.	N.A.	N.A.
P.H.O.L. - Kingston	17	0	0	0	0	0	17	0	9	0	0	0	0	0	9	1	8	0	9	0	8	0
UHN / Mount Sinai Hospital	544	1	0	1	2	0	544	1	530	0	0	0	0	0	530	0	530	0	530	1	530	1
P.H.O.L. - Toronto	146	0	0	0	0	0	146	0	114	0	0	0	0	0	114	0	114	0	114	4	114	1
Sick Kids Hospital - Toronto	N.A.	N.A.	N.A.	N.A.	N.A.	N.A.	N.A.	N.A.	N.A.	N.A.	N.A.	N.A.	N.A.	N.A.	N.A.	N.A.	N.A.	N.A.	N.A.	N.A.	N.A.	N.A.
Sunnybrook & Women's College HSC	N.A.	N.A.	N.A.	N.A.	N.A.	N.A.	N.A.	N.A.	N.A.	N.A.	N.A.	N.A.	N.A.	N.A.	N.A.	N.A.	N.A.	N.A.	N.A.	N.A.	N.A.	N.A.
P.H.O.L. - Sault Ste. Marie	1	0	0	0	0	0	1	0	0	0	0	0	0	0	0	0	0	0	0	0	0	0
P.H.O.L. - Timmins	16	0	0	0	0	0	16	0	1	0	0	0	0	0	1	0	1	0	1	0	1	0
St. Joseph's - London	N.A.	N.A.	N.A.	N.A.	N.A.	N.A.	N.A.	N.A.	N.A.	N.A.	N.A.	N.A.	N.A.	N.A.	N.A.	N.A.	N.A.	N.A.	N.A.	N.A.	N.A.	N.A.
P.H.O.L. - London	38	0	0	0	0	0	38	0	7	0	0	0	0	0	7	0	7	0	7	0	7	0
P.H.O.L. - Orillia	17	0	0	0	0	0	17	0	1	0	0	0	0	0	1	0	1	0	1	0	1	0
P.H.O.L. - Thunder Bay	5	0	0	0	0	0	5	0	4	0	0	0	0	0	4	0	4	0	4	1	4	0
P.H.O.L. - Sudbury	14	0	0	0	0	0	14	0	4	0	0	0	0	0	4	0	4	0	4	0	4	0
P.H.O.L. - Hamilton	29	0	0	0	0	0	29	0	19	0	0	0	0	0	19	0	19	0	19	0	19	0
P.H.O.L. - Peterborough	14	0	0	0	0	0	14	0	4	0	0	0	0	0	4	0	4	0	4	2	4	0
St. Joseph's - Hamilton	390	0	0	0	0	0	390	0	390	0	0	0	0	0	390	1	390	0	390	3	0	0
<b>Province of Ontario</b>	<b>1243</b>	<b>1</b>	<b>0</b>	<b>1</b>	<b>2</b>	<b>0</b>	<b>1243</b>	<b>1</b>	<b>1093</b>	<b>0</b>	<b>0</b>	<b>0</b>	<b>0</b>	<b>0</b>	<b>1093</b>	<b>2</b>	<b>1092</b>	<b>0</b>	<b>1093</b>	<b>11</b>	<b>702</b>	<b>2</b>
Province of Manitoba	1506	0	0	0	0	0	1506	3	100	0	0	0	0	0	100	0	93	0	100	0	93	0
Province of Saskatchewan	131	0	0	0	0	0	131	0	51	0	0	0	0	0	51	0	51	0	51	5	51	0
Province of Alberta	2273	0	0	0	0	0	712	0	712	0	0	0	0	0	712	3	712	0	712	42	712	0
<b>Prairies</b>	<b>3910</b>	<b>0</b>	<b>0</b>	<b>0</b>	<b>0</b>	<b>0</b>	<b>2349</b>	<b>3</b>	<b>863</b>	<b>0</b>	<b>0</b>	<b>0</b>	<b>0</b>	<b>0</b>	<b>863</b>	<b>3</b>	<b>856</b>	<b>0</b>	<b>863</b>	<b>47</b>	<b>856</b>	<b>0</b>
<b>British Columbia</b>	<b>2740</b>	<b>0</b>	<b>0</b>	<b>0</b>	<b>0</b>	<b>0</b>	<b>2731</b>	<b>0</b>	<b>377</b>	<b>0</b>	<b>0</b>	<b>0</b>	<b>2</b>	<b>0</b>	<b>460</b>	<b>2</b>	<b>460</b>	<b>6</b>	<b>458</b>	<b>36</b>	<b>455</b>	<b>1</b>
Yukon	N.A.	N.A.	N.A.	N.A.	N.A.	N.A.	N.A.	N.A.	N.A.	N.A.	N.A.	N.A.	N.A.	N.A.	N.A.	N.A.	N.A.	N.A.	N.A.	N.A.	N.A.	N.A.
Northwest Territories	11	0	0	0	0	0	8	0	8	0	0	0	0	0	8	0	8	0	8	1	8	0
Nunavut	3	0	0	0	0	0	1	0	1	0	0	0	0	0	1	0	1	0	1	0	0	0
<b>Territories</b>	<b>14</b>	<b>0</b>	<b>0</b>	<b>0</b>	<b>0</b>	<b>0</b>	<b>9</b>	<b>0</b>	<b>9</b>	<b>0</b>	<b>0</b>	<b>0</b>	<b>0</b>	<b>0</b>	<b>9</b>	<b>0</b>	<b>9</b>	<b>0</b>	<b>9</b>	<b>1</b>	<b>8</b>	<b>0</b>
<b>CANADA</b>	<b>12105</b>	<b>1</b>	<b>0</b>	<b>1</b>	<b>2</b>	<b>0</b>	<b>7441</b>	<b>6</b>	<b>2871</b>	<b>0</b>	<b>0</b>	<b>0</b>	<b>2</b>	<b>0</b>	<b>2954</b>	<b>15</b>	<b>2946</b>	<b>6</b>	<b>2840</b>	<b>144</b>	<b>2298</b>	<b>5</b>

The data in the RVDSS report represent surveillance data available at the time of writing. Missing data are denoted by N.A.

Specimens from Yukon (YT), Northwest Territories (NT) and Nunavut (NU) are sent to reference laboratories in other provinces and reported results reflect specimens identified as originating from YT, NT or NU.

Results from British Columbia comprise of specimens from the following sites: BC Children's and Women's Hospital, Fraser Health Medical Microbiology Laboratory, Island Health, Providence Health Care, Powell River Hospital, St. Paul's Hospital, Vancouver General Hospital, Victoria General Hospital, BCCDC Public Health Laboratory, Interior Health Authority sites and Northern Health Authority sites.

Delays in the reporting of data may cause data to change retrospectively.

**Table 2: Respiratory Virus Detections/Isolations for the period August 23, 2020 - February 6, 2021 (Reporting Weeks 202035-202105)**

Reporting Laboratory	Flu Tested	A(H1N1)pdm09 Positive	A(H3) Positive	A(UnS) Positive	Total Flu A Positive	Total Flu B Positive	RSV Tested	RSV Positive	PIV Tested	PIV 1 Positive	PIV 2 Positive	PIV 3 Positive	PIV 4 Positive	Other PIV Positive	Adeno Tested	Adeno Positive	hMPV Tested	hMPV Positive	Entero/Rhino Tested	Entero/Rhino Positive	Coron Tested	Coron Positive
Newfoundland	7251	0	0	0	0	0	7251	8	7251	1	0	1	0	0	7255	37	7130	1	7251	1871	N.A.	N.A.
Prince Edward Island	1599	0	0	0	0	0	1599	3	1595	2	0	0	0	0	1595	25	1595	0	1595	197	1595	0
Nova Scotia	1014	0	0	0	0	0	1017	0	335	0	0	0	0	0	335	6	335	0	335	53	335	0
New Brunswick	46537	0	0	0	0	1	16022	0	484	0	0	0	0	0	475	7	475	0	475	44	430	0
<b>Atlantic</b>	<b>56401</b>	<b>0</b>	<b>0</b>	<b>0</b>	<b>0</b>	<b>1</b>	<b>25889</b>	<b>11</b>	<b>9665</b>	<b>3</b>	<b>0</b>	<b>1</b>	<b>0</b>	<b>0</b>	<b>9660</b>	<b>75</b>	<b>9535</b>	<b>1</b>	<b>9656</b>	<b>2165</b>	<b>2360</b>	<b>0</b>
Région Nord-Est	2176	0	0	0	0	0	728	1	0	0	0	0	0	0	0	0	0	0	N.A.	N.A.	0	0
Québec-Chaudière-Appalaches	560	0	0	1	1	0	617	0	379	0	0	0	0	0	381	19	376	0	N.A.	N.A.	359	2
Centre-du-Québec	572	0	0	0	0	0	581	1	185	0	0	0	0	0	183	13	185	0	N.A.	N.A.	182	0
Montréal-Laval	4366	0	0	0	0	0	3596	3	2477	0	0	0	0	0	2531	89	2464	0	N.A.	N.A.	2464	4
Ouest du Québec	679	0	0	0	0	0	625	0	0	0	0	0	0	0	0	0	0	0	N.A.	N.A.	0	0
Montérégie	2	0	0	0	0	0	2	0	0	0	0	0	0	0	0	0	0	0	N.A.	N.A.	0	0
<b>Province of Québec</b>	<b>8355</b>	<b>0</b>	<b>0</b>	<b>1</b>	<b>1</b>	<b>0</b>	<b>6149</b>	<b>5</b>	<b>3041</b>	<b>0</b>	<b>0</b>	<b>0</b>	<b>0</b>	<b>0</b>	<b>3095</b>	<b>121</b>	<b>3025</b>	<b>0</b>	<b>N.A.</b>	<b>N.A.</b>	<b>3005</b>	<b>6</b>
P.H.O.L. - Ottawa	374	0	0	0	0	0	374	1	329	0	0	0	0	0	329	0	328	0	329	20	328	0
CHEO - Ottawa	3282	0	0	1	1	1	2879	4	489	0	0	0	0	0	489	8	489	0	489	52	489	0
P.H.O.L. - Kingston	668	0	0	1	1	0	668	0	454	0	0	0	0	0	454	3	448	0	454	102	448	0
UHN / Mount Sinai Hospital	6550	2	0	1	3	1	6481	5	6183	1	2	2	8	0	4557	6	6143	8	5940	76	3979	5
P.H.O.L. - Toronto	4110	0	0	0	0	0	4107	2	3912	0	0	0	0	2	3913	11	3911	0	3912	142	3911	4
Sick Kids Hospital - Toronto	0	0	0	0	0	0	0	0	0	0	0	0	0	0	0	0	0	0	0	0	0	0
Sunnybrook & Women's College HSC	0	0	0	0	0	0	0	0	0	0	0	0	0	0	0	0	0	0	0	0	0	0
P.H.O.L. - Sault Ste. Marie	108	0	0	2	2	0	106	0	82	0	0	0	0	0	82	0	82	0	82	6	82	0
P.H.O.L. - Timmins	567	0	0	0	0	0	567	0	143	0	0	0	0	0	143	0	142	0	143	30	142	0
St. Joseph's - London	218	0	0	0	0	0	218	0	55	0	0	0	0	0	55	0	55	0	91	8	36	0
P.H.O.L. - London	1523	1	0	5	6	2	1513	0	1161	0	0	0	0	2	1161	2	1156	0	1161	124	1156	3
P.H.O.L. - Orillia	282	0	0	1	1	0	280	0	189	0	0	0	0	0	189	1	189	0	189	12	189	0
P.H.O.L. - Thunder Bay	348	0	0	0	0	0	348	0	339	0	0	0	0	0	340	2	339	0	339	131	339	0
P.H.O.L. - Sudbury	348	0	0	0	0	0	346	0	301	0	0	0	0	0	301	1	301	0	301	27	301	0
P.H.O.L. - Hamilton	1243	0	0	0	0	0	1196	1	1019	0	0	0	0	0	1019	2	1019	0	1019	93	1019	0
P.H.O.L. - Peterborough	355	0	0	1	1	0	309	0	239	0	0	0	0	0	239	0	239	0	239	20	239	0
St. Joseph's - Hamilton	6113	0	0	0	0	0	6113	1	6113	0	0	0	0	0	6113	17	6113	0	6113	373	0	0
<b>Province of Ontario</b>	<b>26089</b>	<b>3</b>	<b>0</b>	<b>12</b>	<b>15</b>	<b>4</b>	<b>25505</b>	<b>14</b>	<b>21008</b>	<b>1</b>	<b>2</b>	<b>2</b>	<b>8</b>	<b>4</b>	<b>19384</b>	<b>53</b>	<b>20954</b>	<b>8</b>	<b>20801</b>	<b>1216</b>	<b>12658</b>	<b>12</b>
Manitoba	30399	0	0	0	0	1	30389	65	2259	0	1	1	0	0	2259	13	2141	1	2259	118	2141	2
Province of Saskatchewan	3403	0	0	0	0	0	3403	3	1353	0	0	1	1	0	1353	9	1353	0	1353	139	1353	2
Province of Alberta	89964	4	0	4	8	0	67879	0	67879	2	18	2	4	0	67879	116	67879	11	67879	5700	67879	19
<b>Prairies</b>	<b>123766</b>	<b>4</b>	<b>0</b>	<b>4</b>	<b>8</b>	<b>1</b>	<b>101671</b>	<b>68</b>	<b>71491</b>	<b>2</b>	<b>19</b>	<b>4</b>	<b>5</b>	<b>0</b>	<b>71491</b>	<b>138</b>	<b>71373</b>	<b>12</b>	<b>71491</b>	<b>5957</b>	<b>71373</b>	<b>23</b>
<b>British Columbia</b>	<b>45851</b>	<b>1</b>	<b>2</b>	<b>4</b>	<b>7</b>	<b>5</b>	<b>45747</b>	<b>5</b>	<b>10976</b>	<b>0</b>	<b>2</b>	<b>0</b>	<b>6</b>	<b>0</b>	<b>11525</b>	<b>55</b>	<b>11479</b>	<b>47</b>	<b>11306</b>	<b>1043</b>	<b>7325</b>	<b>16</b>
Yukon	3404	0	0	8	8	7	3357	4	N.A.	N.A.	N.A.	N.A.	N.A.	N.A.	N.A.	N.A.	N.A.	N.A.	N.A.	N.A.	N.A.	N.A.
Northwest Territories	1002	0	0	0	0	0	986	0	986	0	0	0	1	0	986	8	986	1	986	300	986	0
Nunavut	1085	0	0	0	0	0	1077	0	1077	3	1	0	0	0	1077	25	1077	5	1077	277	179	0
<b>Territories</b>	<b>5491</b>	<b>0</b>	<b>0</b>	<b>8</b>	<b>8</b>	<b>7</b>	<b>5420</b>	<b>4</b>	<b>2063</b>	<b>3</b>	<b>1</b>	<b>0</b>	<b>1</b>	<b>0</b>	<b>2063</b>	<b>33</b>	<b>2063</b>	<b>6</b>	<b>2063</b>	<b>577</b>	<b>1165</b>	<b>0</b>
<b>CANADA</b>	<b>265953</b>	<b>8</b>	<b>2</b>	<b>29</b>	<b>39</b>	<b>18</b>	<b>210381</b>	<b>107</b>	<b>118244</b>	<b>9</b>	<b>24</b>	<b>7</b>	<b>20</b>	<b>4</b>	<b>117218</b>	<b>475</b>	<b>118429</b>	<b>74</b>	<b>115317</b>	<b>10958</b>	<b>97886</b>	<b>57</b>

The data in the RVDSS report represent surveillance data available at the time of writing. Missing data are denoted by N.A.

Specimens from YT, NT and NU are sent to reference laboratories in other provinces and reported results reflect specimens identified as originating from YT, NT or NU.

Results from British Columbia comprise of specimens from the following sites: BC Children's and Women's Hospital, Children's and Women's Hospital Laboratory, Fraser Health Medical Microbiology Laboratory, Island Health, Providence Health Care, Powell River Hospital, St. Paul's Hospital, Vancouver General Hospital, Victoria General Hospital, BCCDC Public Health Laboratory, Interior Health Authority sites and Northern Health Authority sites.

Delays in the reporting of data may cause data to change retrospectively.

Due to reporting delays, the sum of weekly report totals do not add up to cumulative totals.

Figure 1: Number positive laboratory tests for other respiratory viruses by report week, Canada, 2020-21

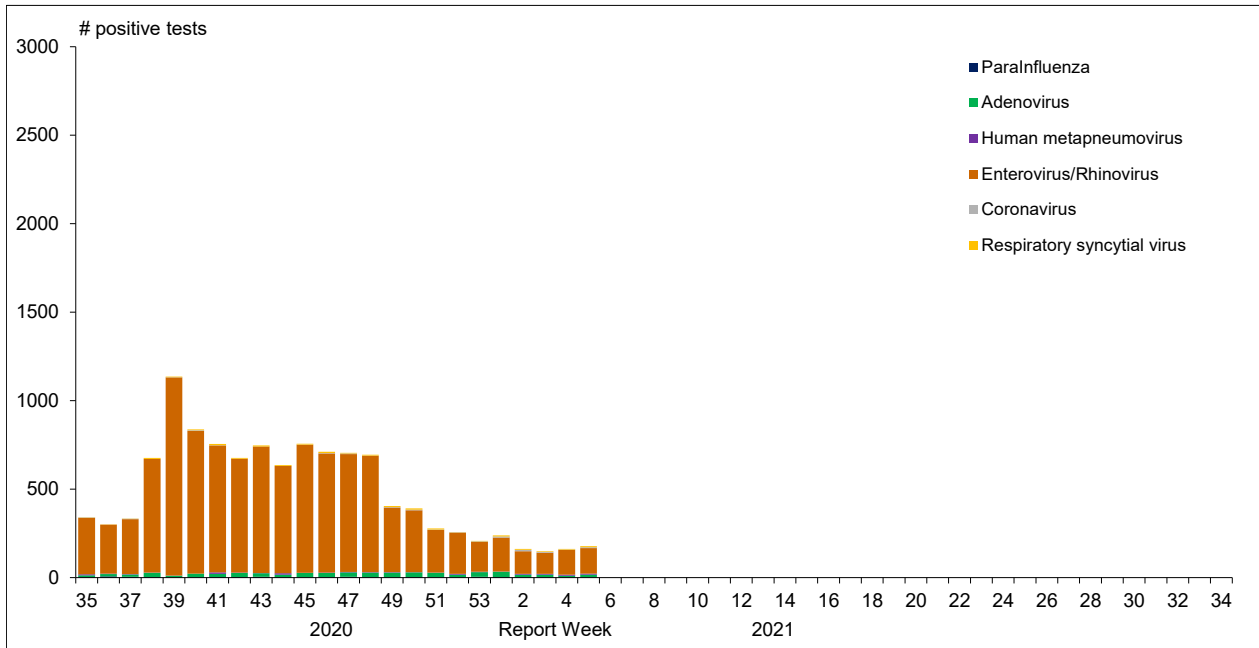


Figure 2 : Positive Influenza Tests (%) in Canada by Region by Week of Report

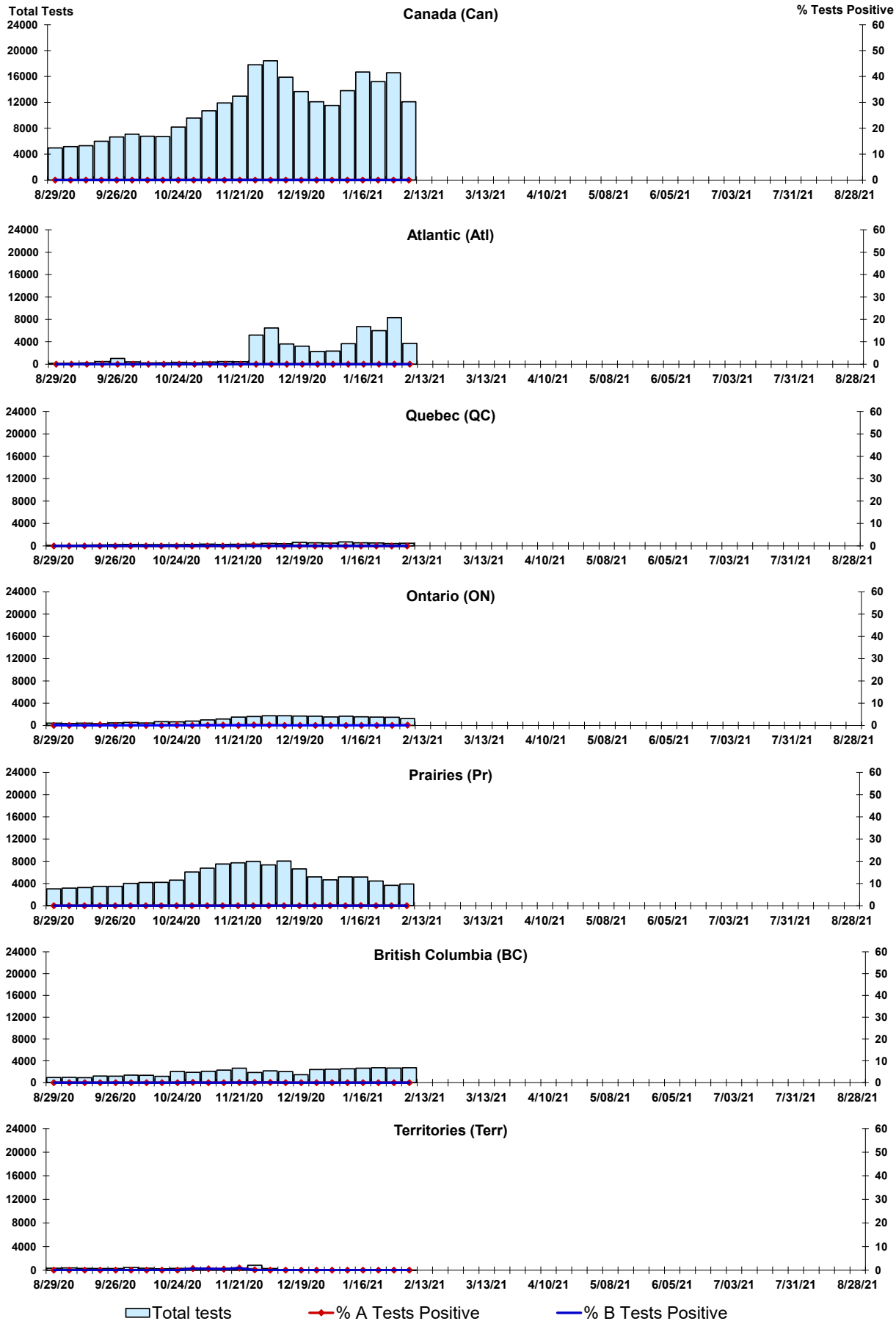


Figure 3: Positive Respiratory syncytial virus (RSV) Tests (%) in Canada by Region by Week of Report

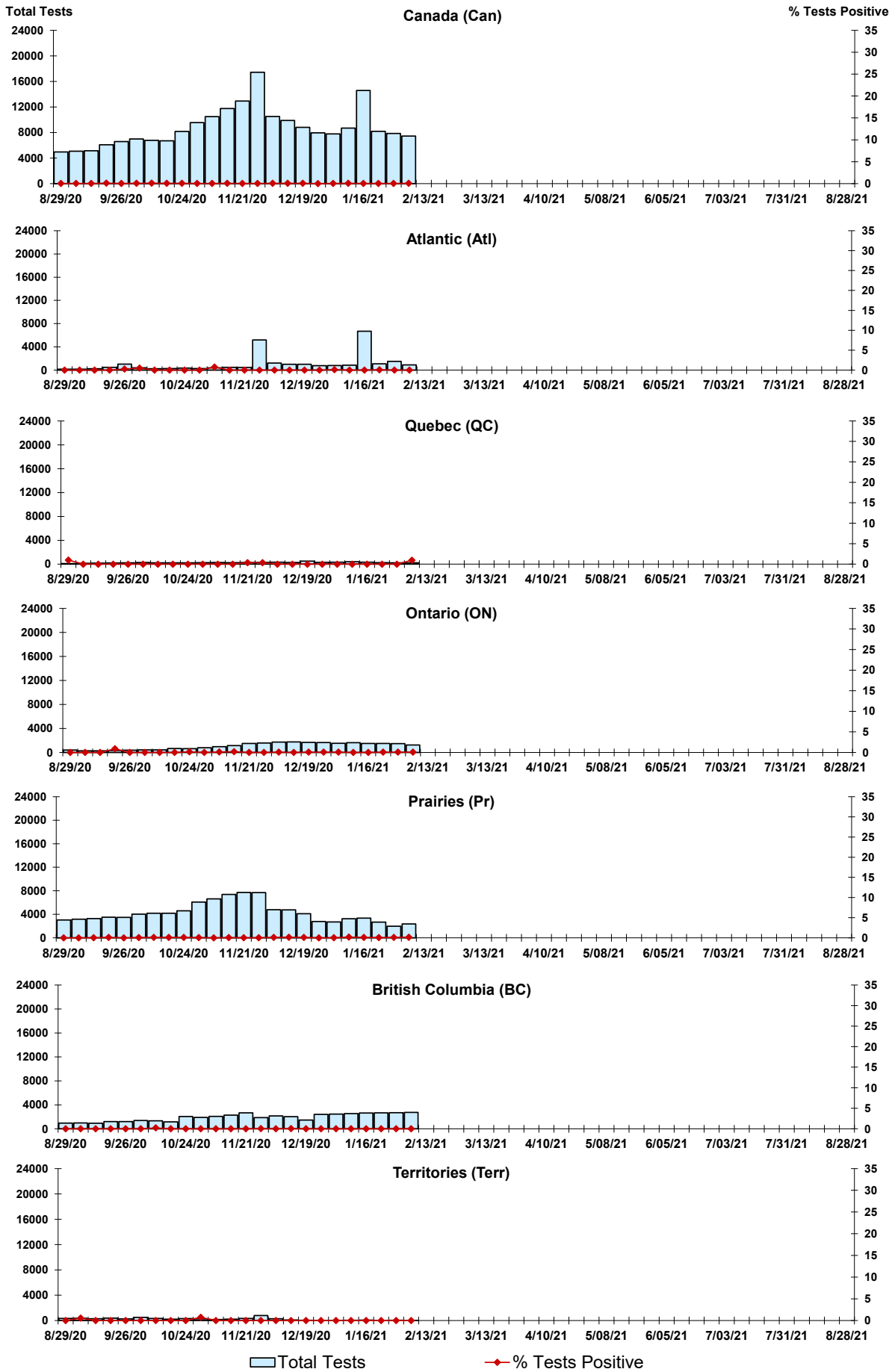
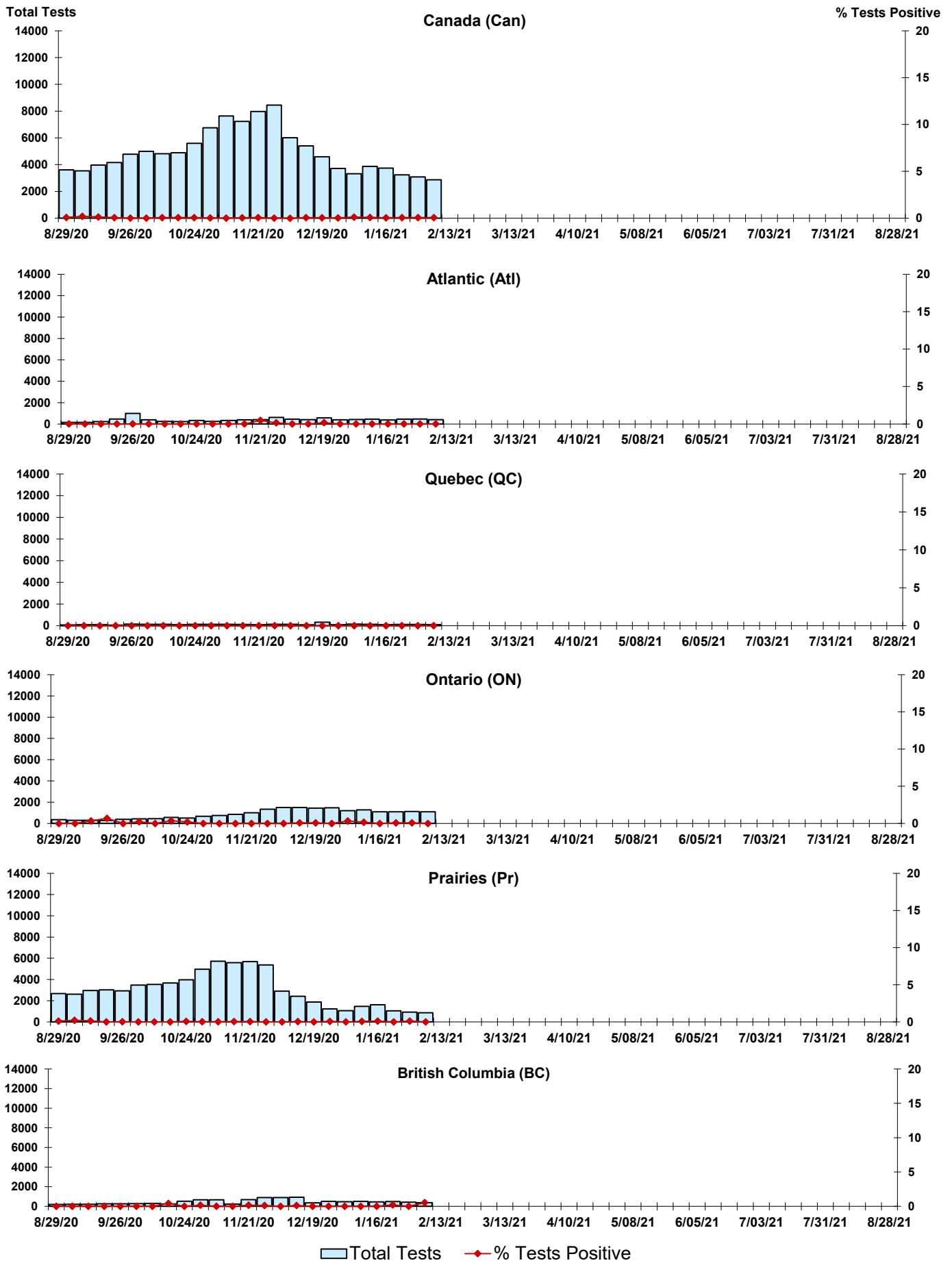


Figure 4: Positive Parainfluenza (PIV) Tests (%) in Canada by Region by Week of Report



Legend: Total Tests (light blue bar), % Tests Positive (red diamond)

Figure 5: Positive Adenovirus (adeno) Tests (%) in Canada by Region by Week of Report

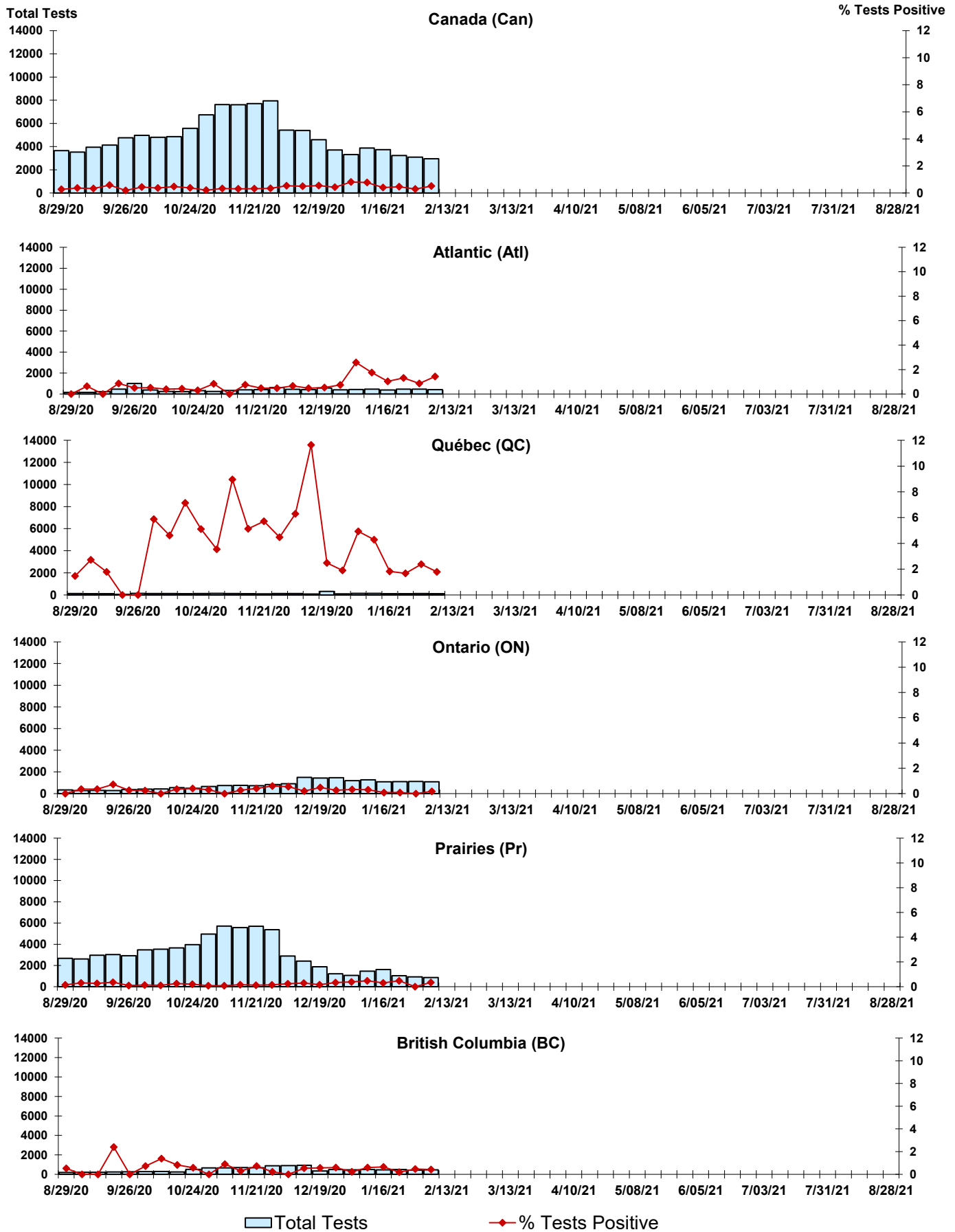


Figure 6: Positive human metapneumovirus (hMPV) Tests (%) in Canada by Region by Week of Report

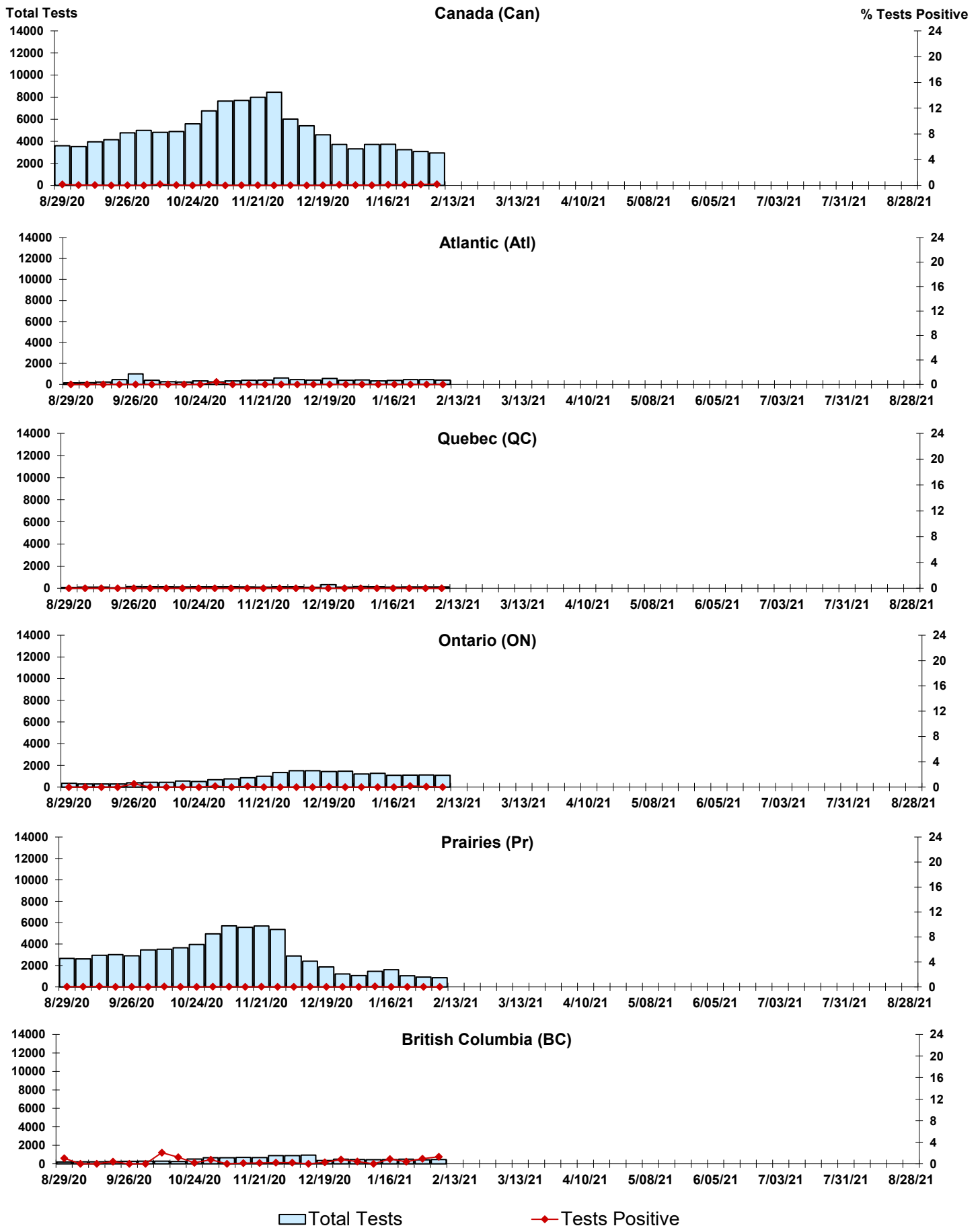




Figure 7: Positive Enterovirus/Rhinovirus (entero/rhino) Tests (%) in Canada by Region by Week of Report

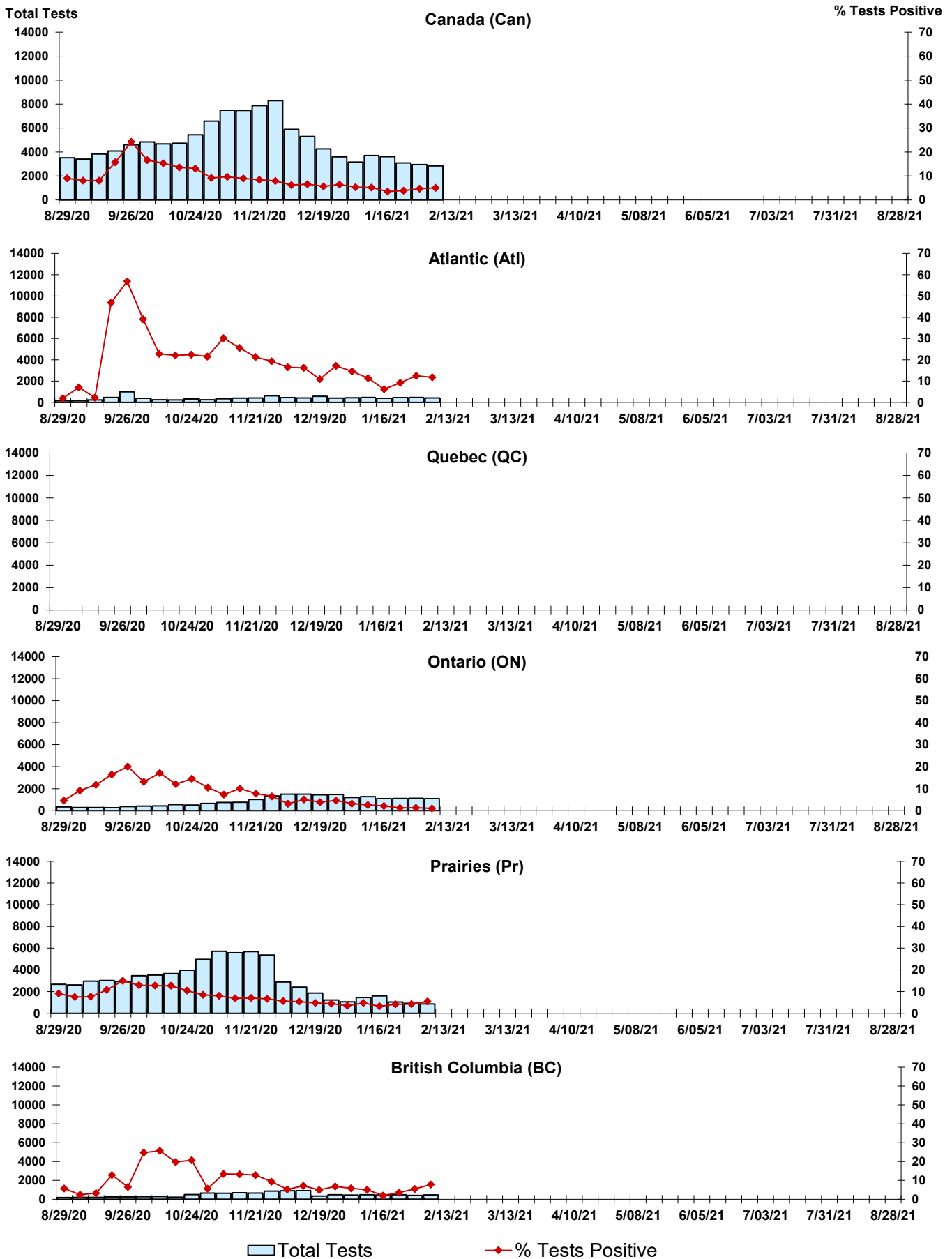
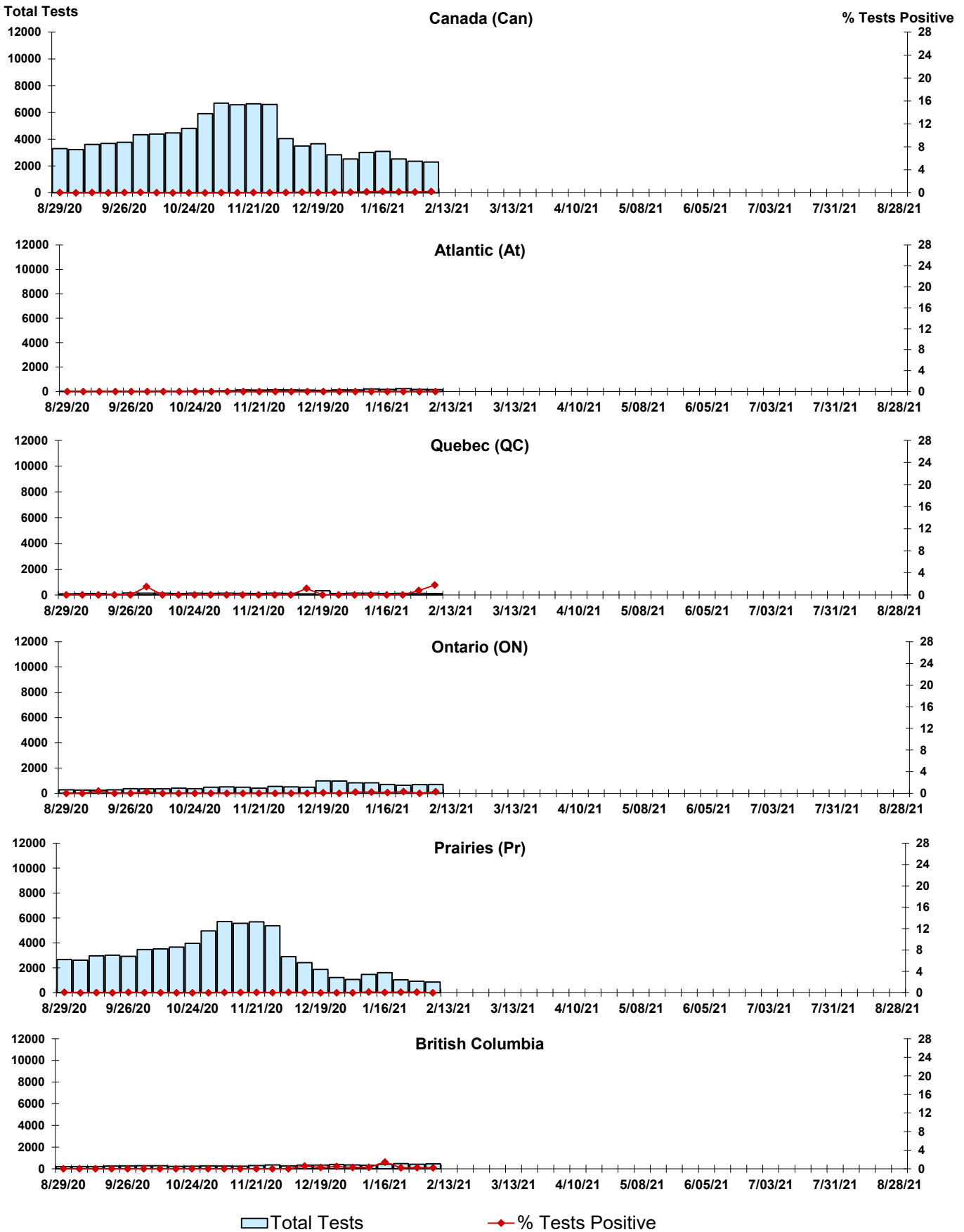


Figure 8: Positive Coronavirus (coron) Tests (%) in Canada by Region by Week of Report



## Abbreviations:

A(H1N1)pdm09: Influenza A(H1N1)pdm09

A(H3): Influenza A(H3N2)

A (UnS): Influenza A (Unsubtyped)

Adeno: Adenovirus

CHEO: Children's Hospital of Eastern Ontario

Coron: Coronavirus

Enterovirus: Enterovirus

hMPV: human metapneumovirus

HSC: Health Sciences Centre

N.A.: Not Applicable

P.H.L.: Public Health Laboratory

P.H.O.L.: Public Health Ontario Laboratory

PIV: Parainfluenza

Rhino: Rhinovirus

RSV: Respiratory syncytial virus

UHN: University Health Network

## Notes:

The data in the RVDSS report represent surveillance data available at the time of writing. Missing data are denoted by N.A.

Specimens from Yukon (YT), Northwest Territories (NT) and Nunavut (NU) are sent to reference laboratories in other provinces. Results reported for the Territories reflect the number of specimens that are identified as originating from YT, NT or NU.

Delays in the reporting of data may cause data to change retrospectively.

Due to reporting delays, the sum of weekly report totals do not add up to cumulative totals.