

RESPIRATORY VIRUS DETECTION REPORT

February 27 to March 5, 2022
(Surveillance Week 2022-09)



In this Respiratory Virus Report, the number of detections of coronavirus reflects only seasonal human coronaviruses, not the novel pandemic coronavirus (SARS-CoV-2) that causes COVID-19. For information on COVID-19, see the [Coronavirus disease \(COVID-19\): Outbreak update](#).

Overall Summary

Detections of seasonal respiratory viruses have dropped sharply since the end of December 2021. In recent weeks, activity of seasonal respiratory viruses has stabilized and is within or below expected levels for this time of year.

- Activity of enterovirus/rhinovirus (210 detections; 7.4% positive) is increasing, but within expected levels for this time of year.
- Activity of other respiratory viruses is stable and low.
- In recent weeks, testing for all respiratory viruses has decreased.
 - Testing for influenza, respiratory syncytial virus, and enterovirus/rhinovirus remain within expected levels.
 - Testing for other respiratory viruses was below expected levels.
- 32/34 sentinel laboratories reported surveillance data.

Abbreviations

Flu: Influenza

Flu A(H1N1)pdm09: Influenza A(H1N1)pdm09

Flu A(H3): Influenza A(H3N2)

Flu A (UnS): Influenza A(Unsubtyped)

RSV: Respiratory syncytial virus

HPIV: Human parainfluenza virus

HMPV: Human metapneumovirus

ADV: Adenovirus

EV/RV: Enterovirus/Rhinovirus

HCoV: Human coronavirus

Atl: Atlantic Canada

BC: British Columbia

Can: Canada

EORLA: Eastern Ontario Regional Laboratory Association

HSC: Health Sciences Centre

N.C.: Data not collected

N.R.: Data not reported for current week

ON: Ontario

PR: Prairies

P.H.O.L.: Public Health Ontario Laboratory

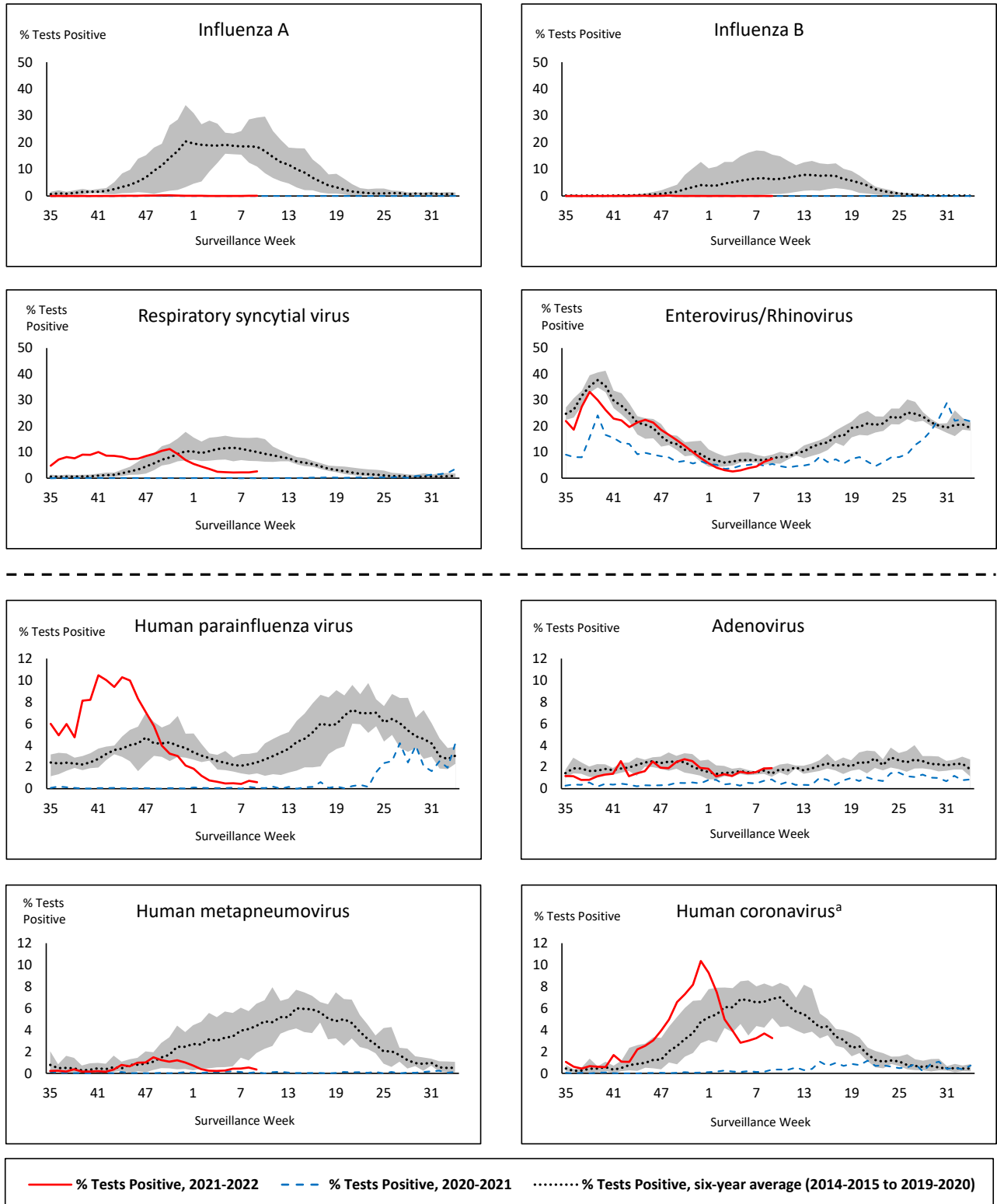
QC: Quebec

Terr: Territories of Canada

UHN: University Health Network



Figure 1: Positive respiratory virus tests (%) reported by participating laboratories in Canada by surveillance week compared to average and range from 2014-2015 to 2019-2020 season



Shaded area represents the maximum and minimum % of respiratory virus tests positive reported by week from seasons 2014-2015 to 2019-2020

Note: Data from week 11 of the 2019-2020 season onwards are excluded from the historical comparison due to the COVID-19 pandemic

Note: % Tests Positive scale changes across the dashed line

^a Human coronavirus excludes human coronaviruses SARS-CoV, MERS-CoV and SARS-CoV-2; Includes seasonal human coronaviruses HCoV-229E, HCoV-OC43, HCoV-NL63, HCoV-HKU1.

Table 1: Respiratory virus detections for the week ending March 5, 2022 (surveillance week 2022-09)

Reporting Laboratory	Flu Tested	A(H1)pdm09 Positive	A(H3) Positive	A(UnS) Positive	Total Flu A Positive	Total Flu B Positive	RSV Tested	RSV Positive	HPIV Tested	HPIV 1 Positive	HPIV 2 Positive	HPIV 3 Positive	HPIV 4 Positive	Other HPIV Positive	ADV Tested	ADV Positive	HMPV Tested	HMPV Positive	EV/RV Tested	EV/RV Positive	HCoV Tested	HCoV Positive
Newfoundland	100	0	0	0	0	0	100	3	100	0	1	0	0	0	101	2	100	0	100	1	N.C.	N.C.
Prince Edward Island	66	0	0	0	0	0	66	12	66	0	0	0	0	0	66	2	66	0	66	11	66	1
Nova Scotia	529	0	0	0	0	0	529	3	17	0	0	0	0	0	17	0	17	0	17	0	17	0
New Brunswick	395	0	0	0	0	0	287	0	23	0	0	0	0	0	23	0	23	0	23	2	23	0
Atlantic	1090	0	0	0	0	0	982	18	206	0	1	0	0	0	207	4	206	0	206	14	106	1
Région Nord-Est	250	0	0	0	0	0	67	2	0	0	0	0	0	0	4	0	24	1	N.C.	N.C.	0	0
Québec-Chaudière-Appalaches	59	0	0	0	0	0	60	0	21	0	0	0	0	0	42	1	42	1	N.C.	N.C.	39	1
Centre-du-Québec	82	0	0	0	0	0	82	1	8	0	0	0	0	0	8	1	8	1	N.C.	N.C.	8	0
Montréal-Laval	329	0	0	0	0	0	334	4	156	1	1	0	0	0	156	14	156	2	N.C.	N.C.	156	0
Ouest du Québec	157	0	0	0	0	0	157	0	5	0	0	0	0	0	5	0	5	0	N.C.	N.C.	5	0
Montérégie	34	0	0	0	0	0	34	0	0	0	0	0	0	0	0	0	0	0	N.C.	N.C.	0	0
Province of Québec	911	0	0	0	0	0	734	7	190	1	1	0	0	0	215	16	235	5	N.C.	N.C.	208	1
P.H.O.L. - Ottawa	12	0	0	0	0	0	12	0	12	0	0	0	0	0	12	0	12	0	12	0	12	0
EORLA	137	0	0	1	1	0	137	3	27	0	0	0	0	0	27	1	27	0	27	5	27	1
P.H.O.L. - Kingston	18	0	0	0	0	0	18	1	18	0	0	0	0	0	18	0	18	0	18	3	18	0
UHN / Mount Sinai Hospital	394	0	0	0	0	0	394	2	16	0	0	0	0	0	16	0	16	0	16	0	16	0
P.H.O.L. - Toronto	186	1	2	0	3	0	184	1	184	0	0	0	0	1	184	6	184	1	184	14	184	4
Sick Kids Hospital - Toronto	N.R.	N.R.	N.R.	N.R.	N.R.	N.R.	N.R.	N.R.	N.R.	N.R.	N.R.	N.R.	N.R.	N.R.	N.R.	N.R.	N.R.	N.R.	N.R.	N.R.	N.R.	N.R.
Sunnybrook & Women's College HSC	N.R.	N.R.	N.R.	N.R.	N.R.	N.R.	N.R.	N.R.	N.R.	N.R.	N.R.	N.R.	N.R.	N.R.	N.R.	N.R.	N.R.	N.R.	N.R.	N.R.	N.R.	N.R.
P.H.O.L. - Sault Ste. Marie	10	0	0	0	0	0	10	0	10	0	0	0	0	0	10	0	10	0	10	1	10	3
P.H.O.L. - Timmins	9	0	0	0	0	0	9	1	9	0	0	0	0	0	9	0	9	0	9	1	9	2
St. Joseph's - London	466	0	0	0	0	0	466	4	466	0	0	0	0	0	466	4	466	0	466	19	2	0
P.H.O.L. - London	36	0	0	0	0	0	36	1	36	0	0	0	0	1	36	1	35	0	36	1	35	4
P.H.O.L. - Orillia	21	0	0	0	0	0	21	1	21	0	0	0	0	0	21	2	21	0	21	5	21	3
P.H.O.L. - Thunder Bay	15	0	0	0	0	0	15	0	15	0	0	0	0	0	15	0	15	0	15	0	15	5
P.H.O.L. - Sudbury	7	0	0	0	0	0	7	0	7	0	0	0	0	0	7	0	7	0	7	0	7	3
P.H.O.L. - Hamilton	26	0	0	0	0	0	26	0	26	0	0	0	0	0	26	1	26	0	26	3	26	1
P.H.O.L. - Peterborough	11	0	0	0	0	0	11	0	5	0	0	0	0	0	5	0	5	0	5	1	5	0
St. Joseph's - Hamilton	497	0	0	0	0	0	497	5	497	0	0	0	0	0	497	2	497	0	497	30	0	0
Province of Ontario	1845	1	2	1	4	0	1843	19	1349	0	0	0	0	2	1349	17	1348	1	1349	83	387	26
Province of Manitoba	766	0	0	0	0	0	766	36	125	0	0	1	0	0	125	1	134	0	125	3	134	2
Province of Saskatchewan	364	0	1	2	3	0	364	30	85	0	0	2	0	0	85	3	85	0	85	12	85	2
Province of Alberta	1426	0	0	5	5	0	660	61	660	0	0	1	2	0	660	6	660	4	660	53	660	17
Prairies	2556	0	1	7	8	0	1790	127	870	0	0	4	2	0	870	10	879	4	870	68	879	21
British Columbia	4238	1	1	0	2	0	3718	79	405	0	0	2	5	0	405	11	405	1	396	44	396	15
Yukon	72	0	0	0	0	0	72	3	N.C.	N.C.	N.C.	N.C.	N.C.	N.C.	N.C.	N.C.	N.C.	N.C.	N.C.	N.C.	N.C.	N.C.
Northwest Territories	23	0	0	0	0	0	22	2	1	0	0	0	0	0	1	0	1	0	22	1	1	0
Nunavut	448	0	0	0	0	0	448	0	N.C.	N.C.	N.C.	N.C.	N.C.	N.C.	N.C.	N.C.	N.C.	N.C.	N.C.	N.C.	N.C.	N.C.
Territories	543	0	0	0	0	0	542	5	1	0	0	0	0	0	1	0	1	0	22	1	1	0
CANADA	11183	2	4	8	14	0	9609	255	3021	1	2	6	7	2	3047	58	3074	11	2843	210	1977	64

The data in the RVDSS report represent surveillance data available at the time of writing. Data missing from the current week are denoted by N.R. Data not collected by reporting lab denoted by N.C.

The reporting laboratory previously listed as CHEO - Ottawa is now listed as EORLA to better reflect data submitted by this provider.

Specimens from Yukon (YT) are sent to reference laboratories in British Columbia and reported results reflect specimens identified as originating from YT.

Results from British Columbia comprise of specimens from the following sites: BC Children's and Women's Hospital, Children's and Women's Hospital Laboratory, Fraser Health Medical Microbiology Laboratory, Island Health, Providence Health Care, Powell River Hospital , St. Paul's Hospital , Vancouver General Hospital, Victoria General Hospital, BCCDC Public Health Laboratory, Interior Health Authority sites and Northern Health Authority sites.

Delays in the reporting of data may cause data to change retrospectively.

For British Columbia, only data from subtyped influenza A specimens are included in the weekly number of influenza detections. The sum of A(H1N1)pdm09, A(H3), and A(UnS) positive results may not equal the sum of total Flu A positive results.

Table 2: Cumulative respiratory virus detections from August 29, 2021 to March 5, 2022 (surveillance week 2021-35 to 2022-09)

Reporting Laboratory	Flu Tested	A(H1)pdm09 Positive	A(H3) Positive	A(UnS) Positive	Total Flu A Positive	Total Flu B Positive	RSV Tested	RSV Positive	HPIV Tested	HPIV 1 Positive	HPIV 2 Positive	HPIV 3 Positive	HPIV 4 Positive	Other HPIV Positive	ADV Tested	ADV Positive	HMPV Tested	HMPV Positive	EV/RV Tested	EV/RV Positive	HCoV Tested	HCoV Positive
Newfoundland	7707	0	0	0	0	0	7706	86	7709	1	4	116	0	154	7716	26	7703	33	7710	1729	N.C.	N.C.
Prince Edward Island	1864	0	0	0	0	0	1864	149	1819	0	0	152	0	0	1864	51	1864	4	1864	449	1864	101
Nova Scotia	13310	0	1	12	13	4	13309	307	1298	0	2	38	7	0	1312	11	1312	4	1312	94	1312	30
New Brunswick	11276	0	0	6	6	0	7215	262	2563	0	0	23	1	0	2566	12	2563	6	2563	38	2472	5
Atlantic	34157	0	1	18	19	4	30094	804	13389	1	6	329	8	154	13448	100	13442	47	13449	2310	5648	136
Région Nord-Est	14613	1	0	2	3	3	6829	1433	590	0	0	6	1	0	689	14	115	2	N.C.	N.C.	876	13
Québec-Chaudière-Appalaches	4491	0	0	5	5	4	5056	994	1254	0	3	7	5	0	1228	49	1139	51	N.C.	N.C.	1036	44
Centre-du-Québec	5393	0	0	3	3	4	5527	1081	473	0	1	19	0	0	473	23	481	17	N.C.	N.C.	466	9
Montréal-Laval	16604	0	0	35	35	4	16480	2438	5464	6	3	21	5	0	5463	329	5460	328	N.C.	N.C.	5460	67
Ouest du Québec	4173	0	1	7	8	0	4130	929	70	0	0	3	1	0	63	5	59	1	N.C.	N.C.	59	1
Montérégie	2549	0	0	2	2	0	2532	386	0	0	0	0	0	0	0	0	0	0	N.C.	N.C.	0	0
Province of Québec	47823	1	1	54	56	15	40554	7261	7851	6	7	56	12	0	7916	420	7254	399	N.C.	N.C.	7897	134
P.H.O.L. - Ottawa	6407	2	1	0	3	0	6407	1437	6407	0	0	0	0	728	6407	311	6406	38	6407	2205	6406	257
EORLA	5015	0	0	1	1	0	4990	599	673	0	2	19	0	0	673	13	354	3	673	124	331	16
P.H.O.L. - Kingston	1123	0	0	0	0	0	1122	115	1121	0	0	0	0	129	1121	19	1116	2	1121	283	1116	79
UHN / Mount Sinai Hospital	12633	0	0	10	10	2	12633	89	404	0	0	0	0	0	404	0	404	0	404	11	404	2
P.H.O.L. - Toronto	6909	1	16	0	17	0	6888	265	6888	0	0	0	0	264	6891	86	6887	13	6888	872	6888	207
Sick Kids Hospital - Toronto	839	0	0	0	0	0	0	0	839	0	2	68	1	0	839	12	839	1	839	233	839	10
Sunnybrook & Women's College HSC	0	0	0	0	0	0	0	0	0	0	0	0	0	0	0	0	0	0	0	0	0	0
P.H.O.L. - Sault Ste. Marie	246	0	1	0	1	0	244	5	244	0	0	0	0	7	244	3	244	1	244	48	244	12
P.H.O.L. - Timmins	313	0	0	0	0	0	313	13	313	0	0	0	0	18	313	1	313	0	313	30	313	26
St. Joseph's - London	10599	0	0	16	16	0	10602	744	9045	0	0	7	0	84	9045	108	9045	9	8999	441	499	2
P.H.O.L. - London	2829	0	6	0	6	0	2822	451	2822	0	0	0	0	153	2822	63	2821	9	2822	401	2821	214
P.H.O.L. - Orillia	690	0	1	0	1	0	690	102	690	0	0	0	0	41	690	24	687	6	690	171	687	51
P.H.O.L. - Thunder Bay	249	0	0	0	0	0	249	18	249	0	0	0	0	21	249	0	249	0	249	49	249	29
P.H.O.L. - Sudbury	258	0	0	0	0	0	258	10	258	0	0	0	0	9	258	1	258	2	258	29	258	8
P.H.O.L. - Hamilton	1333	0	7	0	7	0	1325	68	1325	0	0	0	0	43	1326	10	1325	6	1325	202	1325	75
P.H.O.L. - Peterborough	523	0	0	0	0	0	523	44	516	0	0	0	0	11	516	1	514	0	516	85	514	35
St. Joseph's - Hamilton	16278	0	4	7	11	1	16272	1600	16272	2	0	648	0	0	16272	169	16272	25	16272	1630	0	0
Province of Ontario	66244	3	36	34	73	3	65338	5560	48066	2	4	742	1	1508	48070	821	47734	115	48020	6814	22894	1023
Manitoba	43846	1	15	8	24	0	43846	724	1578	1	4	70	0	0	1578	20	2667	6	1578	197	2473	52
Province of Saskatchewan	20206	2	9	16	27	0	20180	385	3066	0	1	194	28	0	3065	54	3065	5	3065	418	3063	191
Province of Alberta	55054	0	9	35	44	2	22012	2277	22012	0	21	653	138	0	22012	199	22012	54	22012	2818	22012	1231
Prairies	119106	3	33	59	95	2	86038	3386	26656	1	26	917	166	0	26655	273	27744	65	26655	3433	27548	1474
British Columbia	143890	4	38	3	169	85	141003	8457	16497	6	7	1049	163	143	16497	299	16493	64	16141	2729	16190	363
Yukon	4826	0	1	0	4	7	4841	284	N.C.	N.C.	N.C.	N.C.	N.C.	N.C.	N.C.	N.C.	N.C.	N.C.	N.C.	N.C.	N.C.	N.C.
Northwest Territories	718	0	0	0	0	0	672	23	69	0	0	1	0	0	69	2	69	0	671	96	69	0
Nunavut	14128	0	0	0	0	0	14115	8	N.C.	N.C.	N.C.	N.C.	N.C.	N.C.	N.C.	N.C.	N.C.	N.C.	N.C.	N.C.	N.C.	N.C.
Territories	19672	0	1	0	4	7	19628	315	86	0	0	1	0	0	86	3	86	0	688	104	83	0
CANADA	430892	11	110	168	416	116	382655	25783	112545	16	50	3094	350	1805	112672	1916	112753	690	104953	15390	80260	3130

The data in the RVDSS report represent surveillance data available at the time of writing. Data not collected by reporting lab denoted by N.C.

Note: Included in the cumulative detections this season are 11 co-infections of influenza A and B (total of 22 detections) that are suspected to be associated with recent live attenuated influenza vaccine (LAIV) receipt. Co-infections known or reported to be associated with recent LAIV are removed by the submitting laboratory or by PHAC beginning in week 44 as they do not represent community transmission of seasonal influenza viruses.

The reporting laboratory previously listed as CHEO - Ottawa is now listed as EORLA to better reflect data submitted by this provider.

Specimens from Yukon (YT) are sent to reference laboratories in British Columbia and reported results reflect specimens identified as originating from YT.

Results from British Columbia comprise of specimens from the following sites: BC Children's and Women's Hospital, Children's and Women's Hospital Laboratory, Fraser Health Medical Microbiology Laboratory, Island Health, Providence Health Care, Powell River Hospital, St. Paul's Hospital, Vancouver General Hospital, Victoria General Hospital, BCCDC Public Health Laboratory, Interior Health Authority sites and Northern Health Authority sites.

Delays in the reporting of data may cause data to change retrospectively. Due to these delays, the sum of weekly report totals do not add up to cumulative totals.

For British Columbia, only data from subtyped influenza A specimens are included in the weekly number of influenza detections. The sum of A(H1N1)pdm09, A(H3), and A(UnS) positive results may not equal the sum of total Flu A positive results.

Figure 2: Number of positive respiratory virus tests reported by participating laboratories in Canada by surveillance week

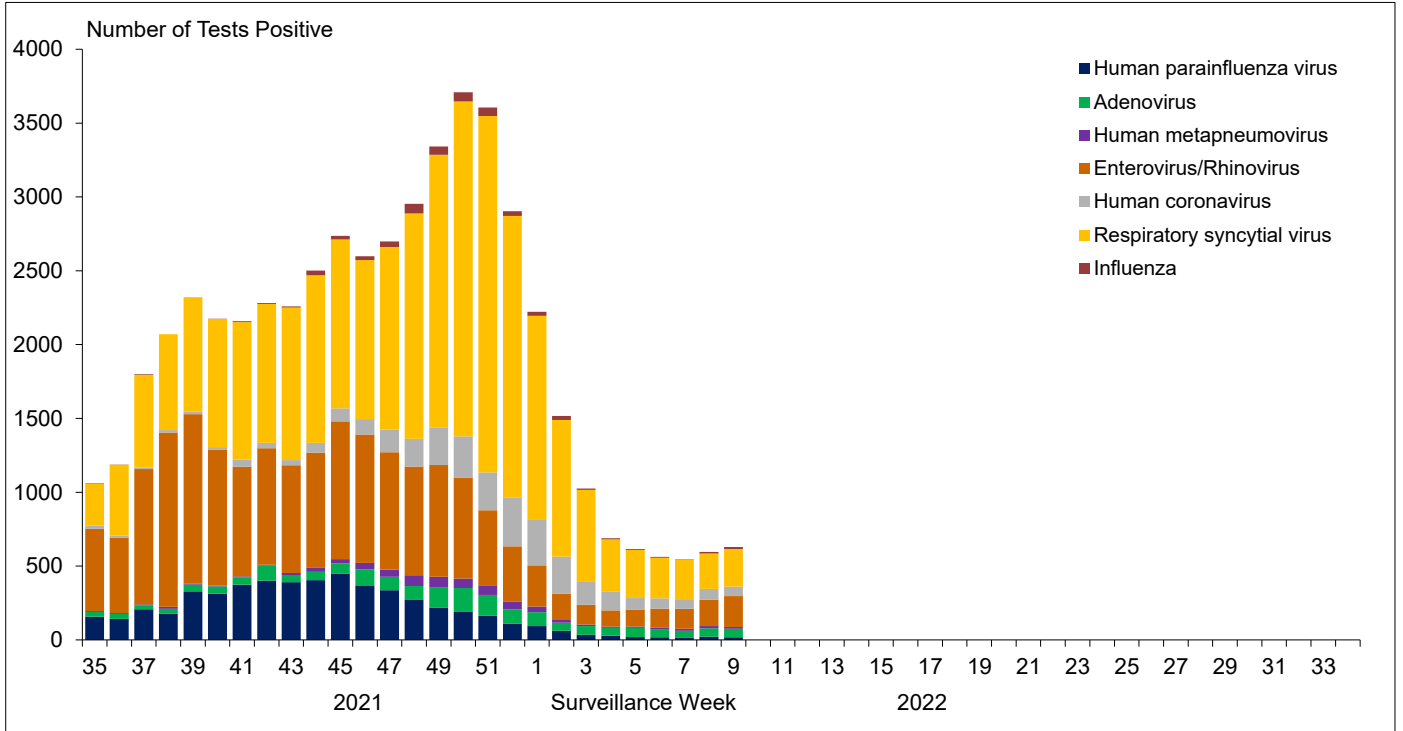


Figure 3: Positive Influenza (Flu) tests (%) in Canada by region by surveillance week

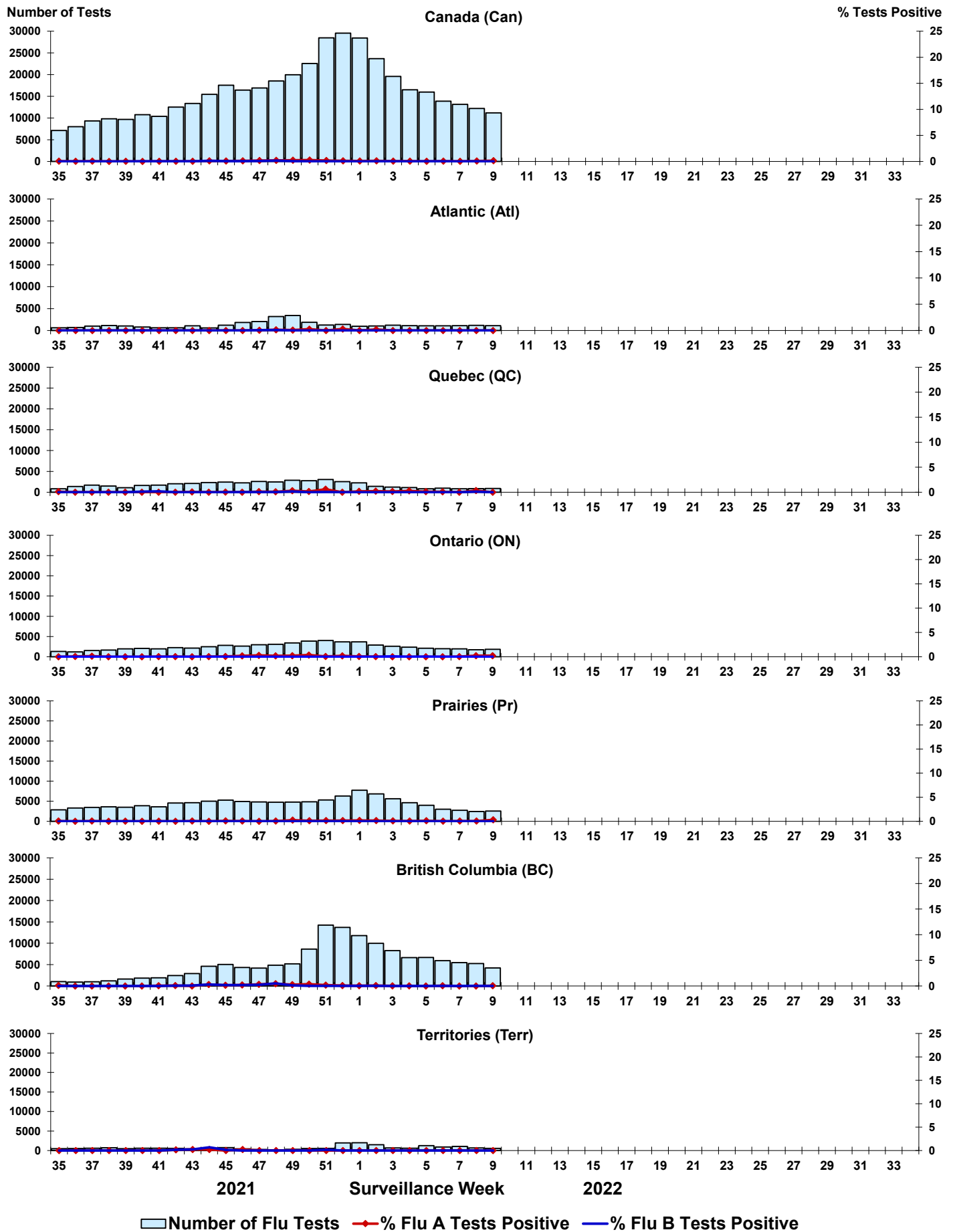


Figure 4: Positive Respiratory syncytial virus (RSV) tests (%) in Canada by region by surveillance week

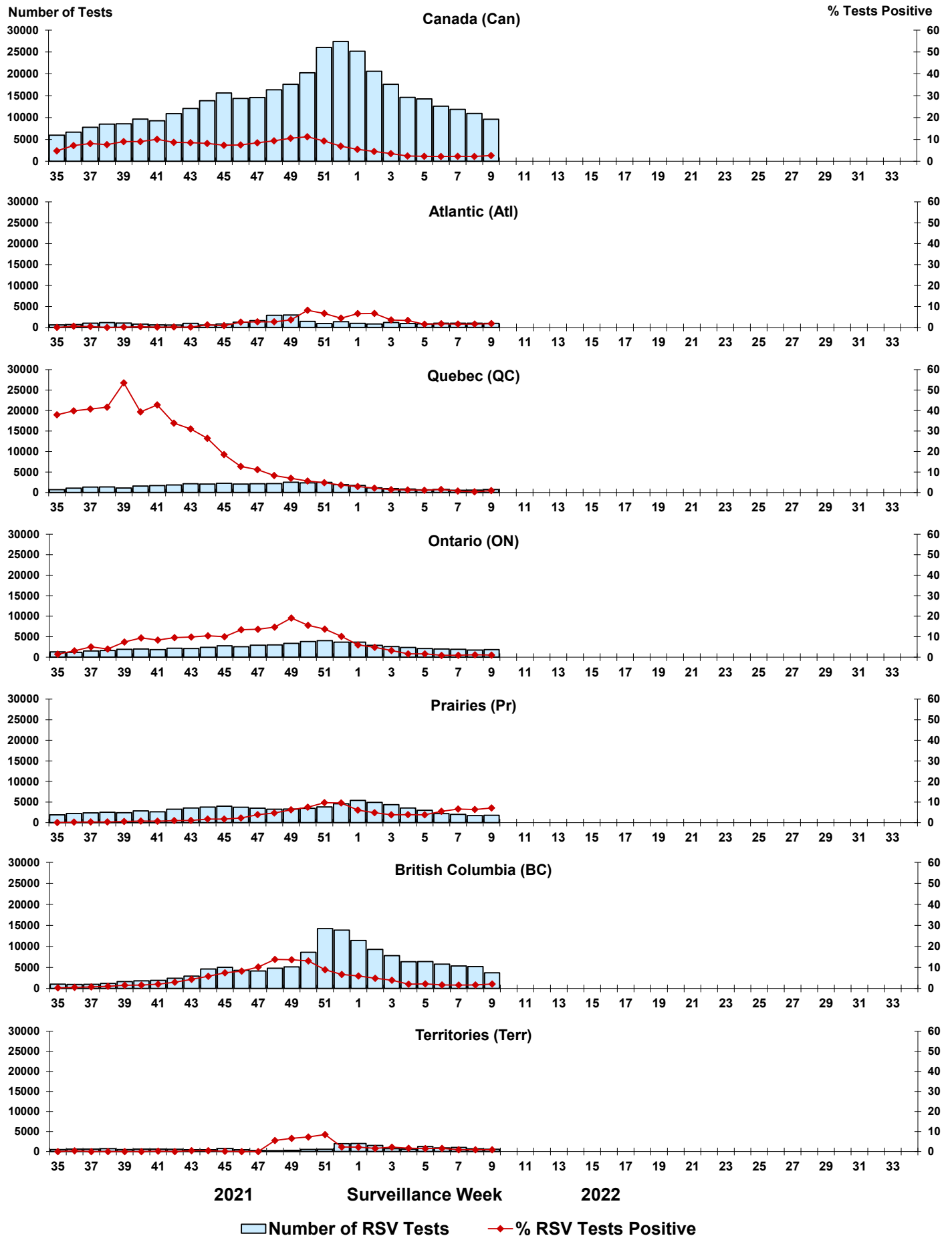


Figure 5: Positive Human parainfluenza virus (HPIV) tests (%) in Canada by region by surveillance week

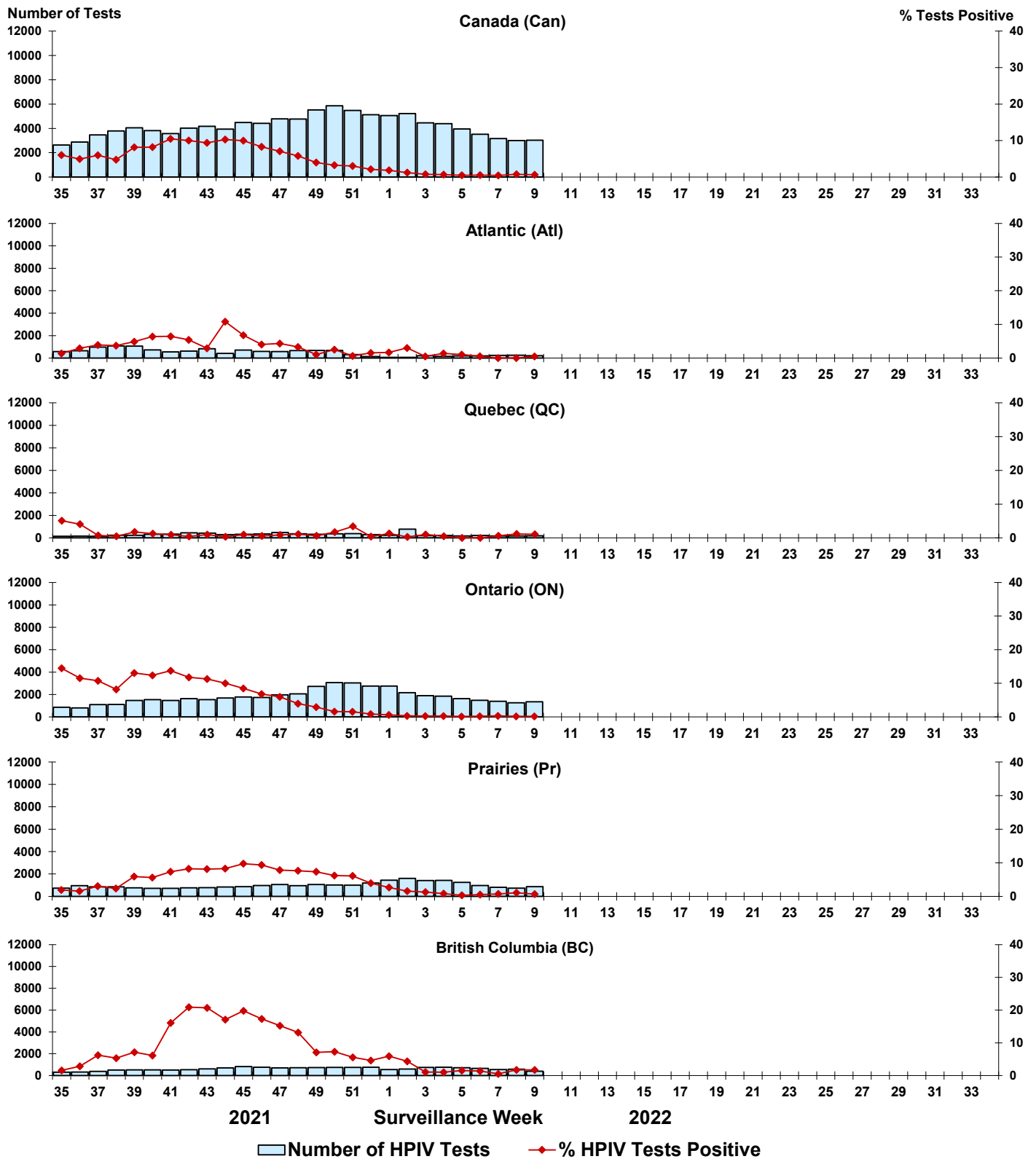


Figure 6: Positive Adenovirus (ADV) tests (%) in Canada by region by surveillance week

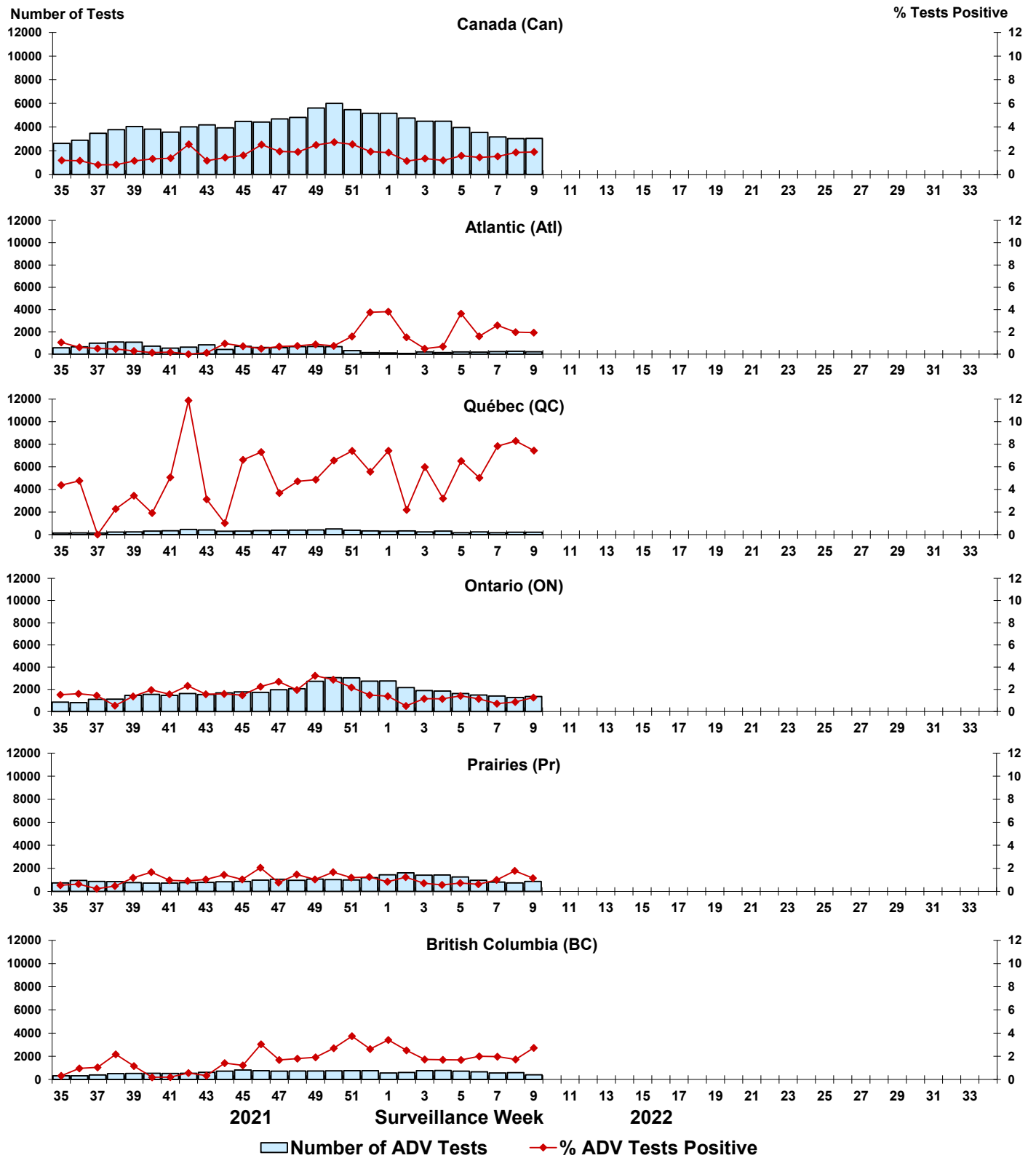


Figure 7: Positive Human metapneumovirus (HMPV) tests (%) in Canada by region by surveillance week

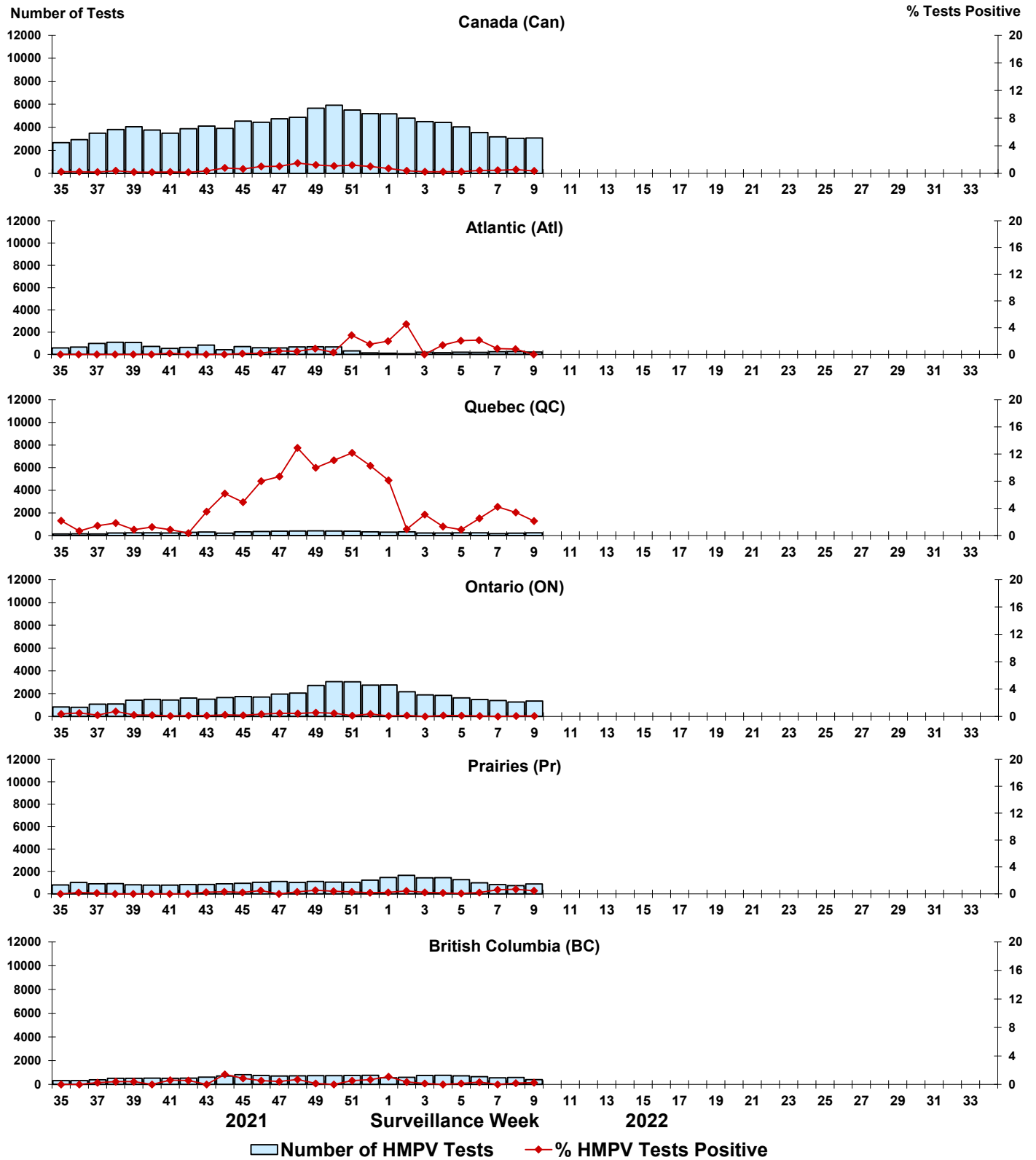


Figure 8: Positive Enterovirus/Rhinovirus (EV/RV) tests (%) in Canada by region by surveillance week

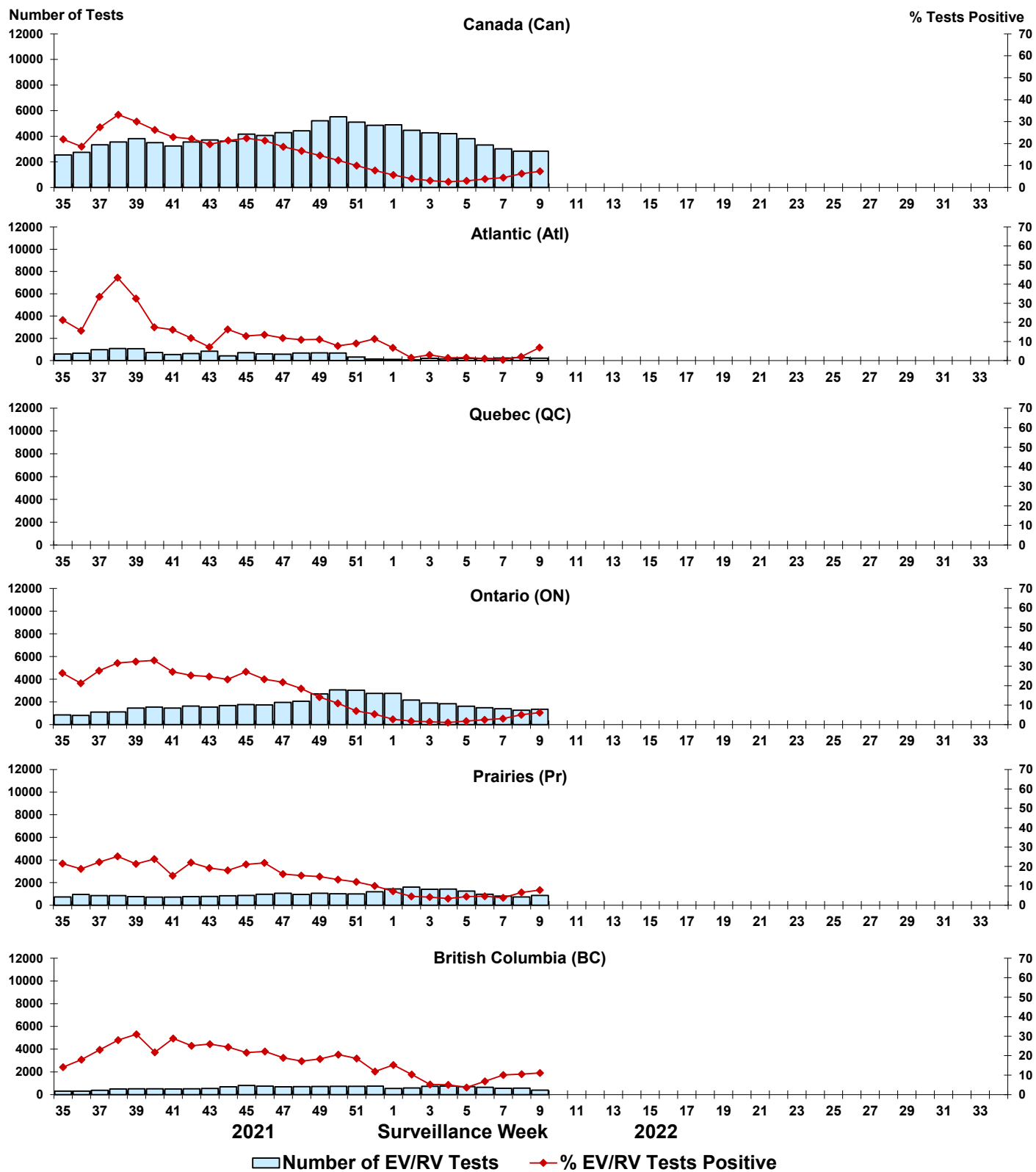


Figure 9: Positive Human coronavirus (HCoV) tests (%) in Canada by region by surveillance week

