

# RESPIRATORY VIRUS DETECTION REPORT

April 30 to May 6, 2023  
(Surveillance Week 2023-18)



Please note that the Respiratory Virus Detection Surveillance System (RVDSS) is a sentinel laboratory surveillance system that does not capture all respiratory virus testing performed in Canada; differences may exist between the data presented in this report and provincial/territorial epidemiological reports. SARS-CoV-2 laboratory data is included in this report to facilitate the comparison of positivity with other respiratory viruses. Interpretation should be made with caution as testing practices differ among viruses.

For additional SARS-CoV-2 surveillance information, please refer to the [COVID-19 epidemiology update](#).

## Overall Summary

In week 18 (week ending May 6, 2023) in Canada, participating RVDSS laboratories reported 3,462 detections of SARS-CoV-2 from 35,349 tests (9.8% positive). Among non-SARS-CoV-2 respiratory viruses, where test volumes are lower (range of 5,566 to 19,542 tests), activity of nearly all viruses is within or below expected levels.

- Activity of influenza remains low at inter-seasonal levels.
  - Influenza B activity (352 detections; 1.8% positive) remains slightly higher than influenza A activity (96 detections; 0.5% positive), but both remain below expected levels.
- Activity of all other non-SARS-CoV-2 respiratory viruses is near or below expected levels typical of this time of year.
- 34/35 sentinel laboratories reported surveillance data

## Abbreviations

ADV: Adenovirus

Atl: Atlantic Canada

BC: British Columbia

Can: Canada

EORLA: Eastern Ontario Regional Laboratory Association

EV/RV: Enterovirus/Rhinovirus

Flu: Influenza

Flu A(H1N1)pdm09: Influenza A(H1N1)pdm09

Flu A(H3): Influenza A(H3N2)

Flu A (UnS): Influenza A(Unsubtyped)

HCoV: Human coronavirus 229E/OC43/NL63/HKU1

HMPV: Human metapneumovirus

HPIV: Human parainfluenza virus

HSC: Health Sciences Centre

N.C.: Data not collected

N.R.: Data not reported for current week

ON: Ontario

PR: Prairies

P.H.O.L.: Public Health Ontario Laboratory

QC: Quebec

RSV: Respiratory syncytial virus

RVDSS: Respiratory Virus Detection Surveillance System

SARS-CoV-2: Severe acute respiratory syndrome coronavirus 2

Terr: Territories of Canada

UHN: University Health Network

© His Majesty the King in Right of Canada, as represented by the Minister of Health, 2021

ISSN: 2564-2359 | Cat.: HP38-7E-PDF | Pub.: 210284

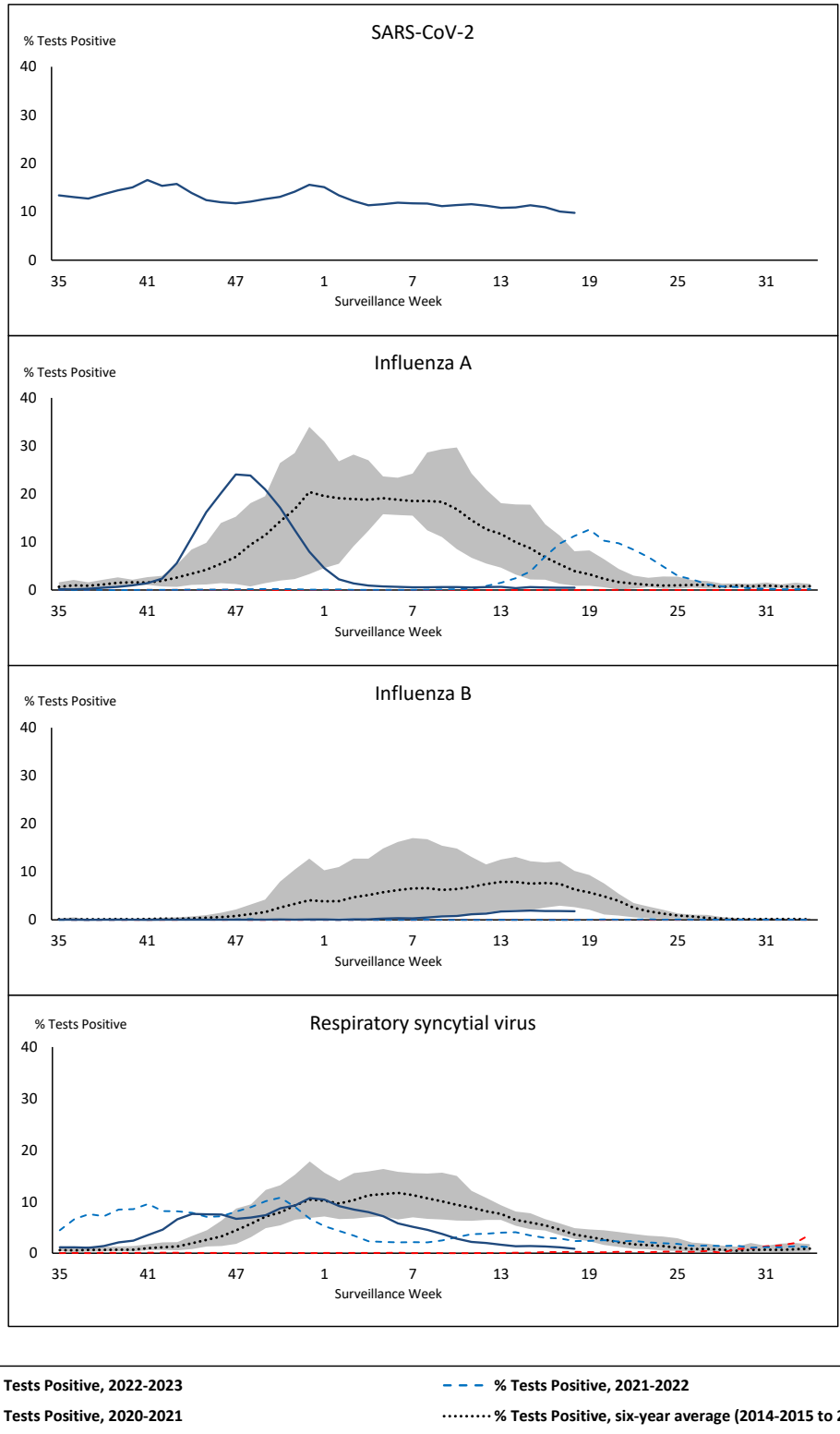


Public Health  
Agency of Canada

Agence de la santé  
publique du Canada

Canada

**Figure 1: Positive severe acute respiratory syndrome coronavirus 2 (SARS-CoV-2), influenza, and respiratory syncytial virus tests (%) reported by participating laboratories in Canada by surveillance week compared to average and range from 2014-2015 to 2019-2020 season**



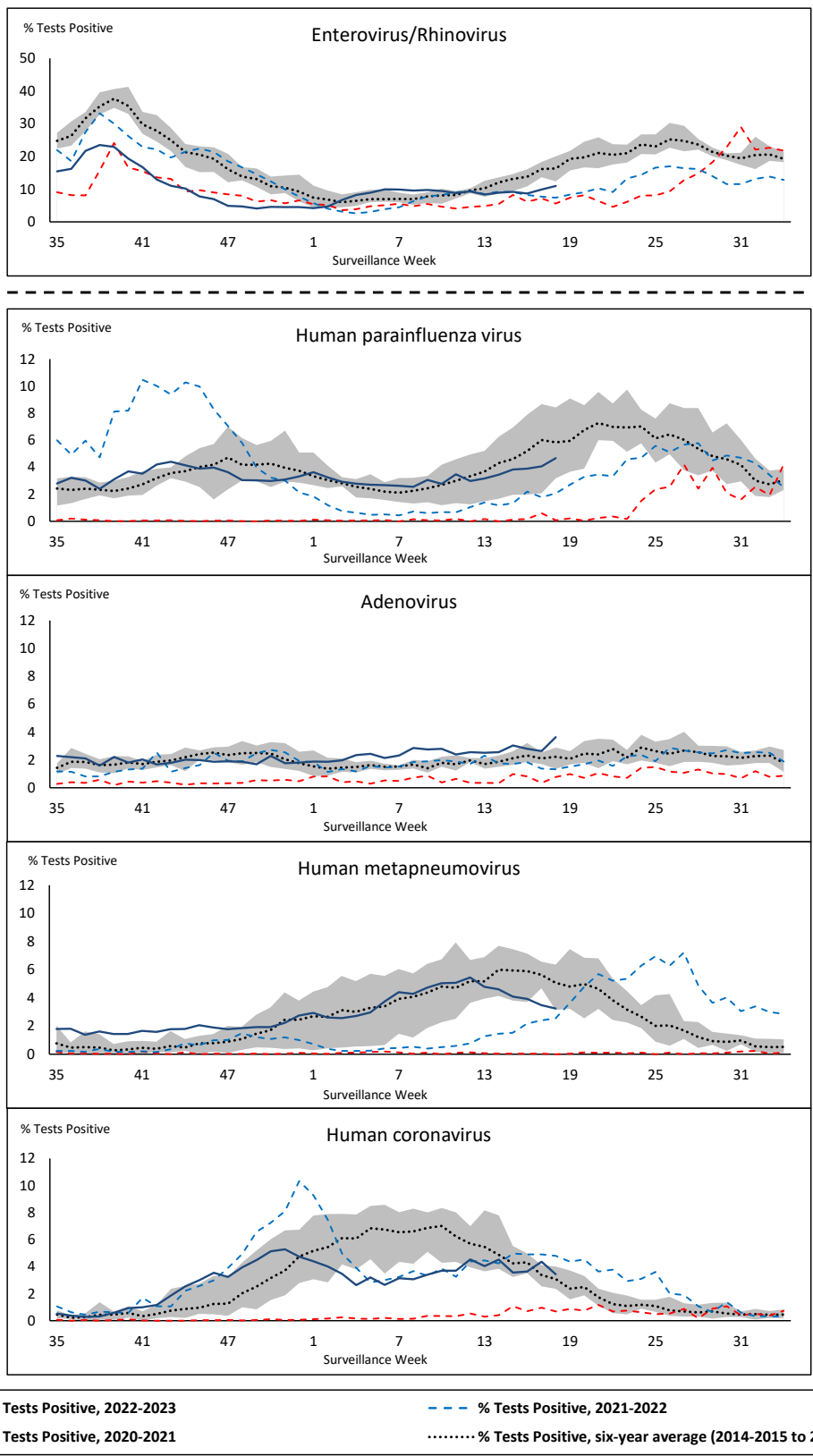
Shaded area represents the maximum and minimum % of respiratory virus tests positive reported by week from seasons 2014-2015 to 2019-2020

Note: Changes to testing practices during the COVID-19 pandemic may cause substantial changes to indicator estimates from previous years. Collection of laboratory testing practice meta-data to understand these changes is ongoing. Interpret trends with caution.

Note: SARS-CoV-2 surveillance was integrated into RVDSS at the beginning of the 2022-2023 season; no appropriate data is available for historical comparison.

Note: Data from week 11 of the 2019-2020 season onwards are excluded from the historical comparison due to the COVID-19 pandemic.

**Figure 2: Positive tests (%) of other respiratory viruses reported by participating laboratories in Canada by surveillance week compared to average and range from 2014-2015 to 2019-2020 season**



Shaded area represents the maximum and minimum % of respiratory virus tests positive reported by week from seasons 2014-2015 to 2019-2020

Note: Changes to testing practices during the COVID-19 pandemic may cause substantial changes to indicator estimates from previous years. Collection of laboratory testing practice meta-data to understand these changes is ongoing. Interpret trends with caution.

Note: Data from week 11 of the 2019-2020 season onwards are excluded from the historical comparison due to the COVID-19 pandemic.

Note: % Tests Positive scale changes across the dashed line

**Table 1: Respiratory virus detections for the week ending May 6, 2023 (surveillance week 2023-18)**

Reporting Laboratory	SARS-CoV-2 Tested	SARS-CoV-2 Positive	Flu Tested	A(H1)pdm09 Positive	A(H3) Positive	A(UnS) Positive	Total Flu A Positive	Total Flu B Positive	RSV Tested	RSV Positive	HPIV Tested	HPIV 1 Positive	HPIV 2 Positive	HPIV 3 Positive	HPIV 4 Positive	Other HPIV Positive	ADV Tested	ADV Positive	HMPV Tested	HMPV Positive	EV/RV Tested	EV/RV Positive	HCoV Tested	HCoV Positive	
Newfoundland	459	60	277	0	0	0	0	0	277	20	277	8	0	11	5	0	277	8	277	0	277	33	277	9	
Prince Edward Island	147	19	62	0	0	0	0	0	62	2	8	0	0	0	0	0	8	1	8	0	8	3	8	0	
Nova Scotia	1425	239	756	0	0	2	2	2	756	9	28	1	0	1	0	0	28	3	28	1	28	8	28	4	
New Brunswick	712	85	680	1	0	0	1	3	676	3	77	0	0	4	0	0	77	14	77	4	77	27	77	4	
<b>Atlantic</b>	<b>2743</b>	<b>403</b>	<b>1775</b>	<b>1</b>	<b>0</b>	<b>2</b>	<b>3</b>	<b>5</b>	<b>1771</b>	<b>34</b>	<b>390</b>	<b>9</b>	<b>0</b>	<b>16</b>	<b>5</b>	<b>0</b>	<b>390</b>	<b>26</b>	<b>390</b>	<b>5</b>	<b>390</b>	<b>71</b>	<b>390</b>	<b>17</b>	
Région Nord-Est	1561	165	1264	0	0	2	2	4	237	3	46	1	0	2	0	0	46	5	46	2	N.C.	N.C.	46	2	
Québec-Chaudière-Appalaches	2612	162	500	0	0	7	7	22	491	10	190	0	0	6	0	0	200	19	190	5	N.C.	N.C.	190	1	
Centre-du-Québec	2918	272	292	0	0	1	1	10	291	2	23	0	0	1	2	0	23	3	23	0	N.C.	N.C.	23	1	
Montréal-Laval	3631	344	2466	0	0	15	15	94	1492	20	516	2	1	13	3	0	516	26	520	10	N.C.	N.C.	516	8	
Ouest du Québec	1521	120	426	0	0	1	1	6	410	0	19	0	0	0	0	0	19	0	19	0	N.C.	N.C.	19	0	
Montérégie	2074	146	1083	0	0	1	1	26	898	12	5	0	0	0	0	0	5	0	5	0	N.C.	N.C.	5	0	
<b>Province of Québec</b>	<b>14317</b>	<b>1209</b>	<b>6031</b>	<b>0</b>	<b>0</b>	<b>27</b>	<b>27</b>	<b>162</b>	<b>3819</b>	<b>47</b>	<b>799</b>	<b>3</b>	<b>1</b>	<b>22</b>	<b>5</b>	<b>0</b>	<b>809</b>	<b>53</b>	<b>803</b>	<b>17</b>	<b>N.C.</b>	<b>N.C.</b>	<b>799</b>	<b>12</b>	
P.H.O.L. - Ottawa	203	49	96	0	0	0	0	0	96	1	77	0	0	0	0	13	77	0	77	1	77	7	77	9	
EOURLA	1286	70	328	0	0	1	1	3	328	4	17	0	0	0	0	0	17	0	17	1	17	4	17	3	
P.H.O.L. - Kingston	365	49	79	0	0	0	0	0	79	0	54	0	0	0	0	5	54	0	54	1	54	7	54	5	
UHN / Mount Sinai Hospital	1038	55	474	0	1	2	3	0	474	3	26	1	0	2	0	0	26	0	26	0	26	1	26	0	
P.H.O.L. - Toronto	394	79	683	6	3	0	2	5	683	3	646	0	0	0	0	47	646	22	646	80	646	80	646	54	
Sick Kids Hospital - Toronto	N.R.	N.R.	N.R.	N.R.	N.R.	N.R.	N.R.	N.R.	N.R.	N.R.	N.R.	N.R.	N.R.	N.R.	N.R.	N.R.	N.R.	N.R.	N.R.	N.R.	N.R.	N.R.	N.R.	N.R.	N.R.
Shared Hospital Laboratory	1413	88	1413	2	1	2	5	31	1413	4	1416	0	0	0	0	24	1416	21	1417	21	1417	79	1417	25	
P.H.O.L. - Sault Ste. Marie	18	0	5	0	0	0	0	0	5	0	5	0	0	0	0	1	5	0	5	0	5	1	5	0	
P.H.O.L. - Timmins	89	5	16	0	0	0	0	0	16	0	11	0	0	0	0	1	11	0	11	2	11	0	11	1	
St. Joseph's - London	1024	58	335	0	0	0	0	5	335	1	60	0	0	0	0	4	60	2	60	5	60	8	60	3	
P.H.O.L. - London	479	101	180	0	0	0	0	1	180	4	155	0	0	0	0	8	155	3	155	9	155	26	155	4	
P.H.O.L. - Orillia	1	0	30	0	0	0	0	1	30	0	30	0	0	0	0	2	30	5	30	0	30	9	30	0	
P.H.O.L. - Thunder Bay	54	3	17	0	0	0	0	0	17	0	15	0	0	0	0	1	15	0	15	1	15	0	15	0	
P.H.O.L. - Sudbury	15	0	9	0	0	0	0	0	9	0	5	0	0	0	0	0	5	0	5	0	5	0	5	0	
P.H.O.L. - Hamilton	228	30	170	1	0	0	1	4	170	1	156	0	0	0	0	10	156	9	156	6	156	27	156	6	
P.H.O.L. - Peterborough	44	7	42	0	0	0	0	2	42	2	39	0	0	0	0	4	39	0	39	0	39	3	39	4	
St. Joseph's - Hamilton	1506	98	1301	0	0	3	3	42	1301	1	1301	0	0	13	0	0	1301	43	1301	32	1301	83	0	0	
Sault Area Hospital	74	6	74	0	0	0	0	1	74	2	40	0	0	1	0	0	40	0	40	1	40	9	40	1	
<b>Province of Ontario</b>	<b>8231</b>	<b>698</b>	<b>5252</b>	<b>9</b>	<b>5</b>	<b>8</b>	<b>15</b>	<b>95</b>	<b>5252</b>	<b>26</b>	<b>4053</b>	<b>1</b>	<b>0</b>	<b>16</b>	<b>0</b>	<b>120</b>	<b>4053</b>	<b>105</b>	<b>4054</b>	<b>160</b>	<b>4054</b>	<b>344</b>	<b>2753</b>	<b>115</b>	
Manitoba	1350	175	1115	0	0	4	4	6	1115	10	104	4	3	4	0	0	104	4	133	4	104	30	133	3	
Saskatchewan	1664	142	652	0	0	14	14	8	600	4	259	14	14	0	8	0	260	7	261	8	261	38	260	7	
Alberta	3720	340	2367	10	0	17	27	52	2243	5	826	5	5	11	13	0	826	25	826	8	815	100	826	22	
<b>Prairies</b>	<b>6734</b>	<b>657</b>	<b>4134</b>	<b>10</b>	<b>0</b>	<b>35</b>	<b>45</b>	<b>66</b>	<b>3958</b>	<b>19</b>	<b>1189</b>	<b>23</b>	<b>22</b>	<b>15</b>	<b>21</b>	<b>0</b>	<b>1190</b>	<b>36</b>	<b>1220</b>	<b>20</b>	<b>1180</b>	<b>168</b>	<b>1219</b>	<b>32</b>	
<b>British Columbia</b>	<b>3123</b>	<b>488</b>	<b>2201</b>	<b>4</b>	<b>0</b>	<b>0</b>	<b>6</b>	<b>11</b>	<b>2109</b>	<b>14</b>	<b>424</b>	<b>20</b>	<b>2</b>	<b>17</b>	<b>2</b>	<b>0</b>	<b>424</b>	<b>29</b>	<b>424</b>	<b>22</b>	<b>405</b>	<b>78</b>	<b>405</b>	<b>15</b>	
Yukon	48	3	23	0	0	0	0	0	23	0	N.C.	N.C.	N.C.	N.C.	N.C.	N.C.	N.C.	N.C.	N.C.	N.C.	N.C.	N.C.	N.C.	N.C.	
Northwest Territories	19	2	16	0	0	0	0	0	16	2	N.C.	N.C.	N.C.	N.C.	N.C.	N.C.	N.C.	N.C.	N.C.	N.C.	N.C.	16	1	N.C.	N.C.
Nunavut	134	2	110	0	0	0	0	13	110	5	N.C.	N.C.	N.C.	N.C.	N.C.	N.C.	N.C.	N.C.	N.C.	N.C.	N.C.	N.C.	N.C.	N.C.	
<b>Territories</b>	<b>201</b>	<b>7</b>	<b>149</b>	<b>0</b>	<b>0</b>	<b>0</b>	<b>0</b>	<b>13</b>	<b>149</b>	<b>7</b>	<b>N.C.</b>	<b>N.C.</b>	<b>N.C.</b>	<b>N.C.</b>	<b>N.C.</b>	<b>N.C.</b>	<b>N.C.</b>	<b>N.C.</b>	<b>N.C.</b>	<b>N.C.</b>	<b>16</b>	<b>1</b>	<b>N.C.</b>	<b>N.C.</b>	
<b>CANADA</b>	<b>35349</b>	<b>3462</b>	<b>19542</b>	<b>24</b>	<b>5</b>	<b>72</b>	<b>96</b>	<b>352</b>	<b>17058</b>	<b>147</b>	<b>6855</b>	<b>56</b>	<b>25</b>	<b>86</b>	<b>33</b>	<b>120</b>	<b>6866</b>	<b>249</b>	<b>6891</b>	<b>224</b>	<b>6045</b>	<b>662</b>	<b>5566</b>	<b>191</b>	

The data in the RVDSS report represent surveillance data available at the time of writing. Data missing from the current week are denoted by N.R. Data not collected by reporting lab denoted by N.C.

Some specimens from Yukon (YT) are sent to reference laboratories in British Columbia and reported results reflect specimens identified as originating from YT.

Results from British Columbia comprise of specimens from the following sites: Children's and Women's Hospital Laboratory, Fraser Health Medical Microbiology Laboratory, Island Health, Providence Health Care, Vancouver Coastal Health sites, Victoria General Hospital, BCCDC Public Health Laboratory, Interior Health Authority sites and Northern Health Authority sites.

Due to different testing protocols of laboratories across Canada, influenza A subtype detection counts may not be included in total influenza A detection counts. Total influenza A and B positive counts are used to calculate percentage of tests

Delays in the reporting of data may cause data to change retrospectively.

**Table 2: Cumulative respiratory virus detections from August 28, 2022 to May 6, 2023 (surveillance weeks 2022-35 to 2023-18)**

Reporting Laboratory	SARS-CoV-2 Tested	SARS-CoV-2 Positive	Flu Tested	A(H1)pdm09 Positive	A(H3) Positive	A(UnS) Positive	Total Flu A Positive	Total Flu B Positive	RSV Tested	RSV Positive	HPIV Tested	HPIV 1 Positive	HPIV 2 Positive	HPIV 3 Positive	HPIV 4 Positive	Other HPIV Positive	ADV Tested	ADV Positive	HMPV Tested	HMPV Positive	EV/RV Tested	EV/RV Positive	HCoV Tested	HCoV Positive
Newfoundland	20473	3689	11772	1	246	672	919	6	11772	567	11772	55	30	359	69	0	11772	229	11772	370	11772	988	11772	440
Prince Edward Island	32774	7242	3977	1	119	247	367	3	3977	382	1140	19	27	78	7	0	1140	72	1140	37	1140	337	1140	35
Nova Scotia	126750	24921	40188	0	4	3640	3644	11	40178	2401	1272	7	16	30	4	0	1278	48	1268	44	1278	238	1278	57
New Brunswick	105050	15499	47084	20	133	4432	4585	25	39115	2038	3453	19	29	151	8	0	3453	251	3453	176	3453	640	3398	221
<b>Atlantic</b>	<b>285047</b>	<b>51351</b>	<b>103021</b>	<b>22</b>	<b>502</b>	<b>8991</b>	<b>9515</b>	<b>45</b>	<b>95042</b>	<b>5388</b>	<b>17637</b>	<b>100</b>	<b>102</b>	<b>618</b>	<b>88</b>	<b>0</b>	<b>17643</b>	<b>600</b>	<b>17633</b>	<b>627</b>	<b>17643</b>	<b>2203</b>	<b>17588</b>	<b>753</b>
Région Nord-Est	88963	10927	51837	0	4	3818	3822	62	15889	1369	1480	24	5	83	0	0	1481	125	1472	92	N.C.	N.C.	1481	105
Québec-Chaudière-Appalaches	185896	17832	25055	0	0	2882	2882	129	24378	1911	7051	23	5	88	5	0	7520	616	7051	337	N.C.	N.C.	7051	335
Centre-du-Québec	150512	20727	15456	0	0	1780	1780	85	13714	982	987	13	0	48	7	0	987	114	987	72	N.C.	N.C.	987	71
Montréal-Laval	204601	25475	98030	0	9	6224	6233	1343	52917	2713	21475	134	20	473	24	0	21484	969	21622	764	N.C.	N.C.	21160	763
Ouest du Québec	113520	14633	22989	0	7	2191	2198	140	20704	1314	1035	21	0	65	2	0	1034	187	1035	59	N.C.	N.C.	1036	62
Montérégie	144237	16431	28443	0	0	1796	1796	201	25820	1186	141	0	0	2	0	0	141	4	141	6	N.C.	N.C.	141	3
<b>Province of Québec</b>	<b>887729</b>	<b>106025</b>	<b>241810</b>	<b>0</b>	<b>20</b>	<b>18691</b>	<b>18711</b>	<b>1960</b>	<b>153422</b>	<b>9475</b>	<b>32169</b>	<b>215</b>	<b>30</b>	<b>759</b>	<b>38</b>	<b>0</b>	<b>32647</b>	<b>2015</b>	<b>32308</b>	<b>1330</b>	<b>N.C.</b>	<b>N.C.</b>	<b>31856</b>	<b>1339</b>
P.H.O.L. - Ottawa	28662	7198	5506	17	136	66	214	2	5506	354	3863	0	0	0	0	109	3863	16	3863	112	3863	352	3863	186
EOURLA	87604	8602	16023	0	0	1407	1407	39	16023	1295	1288	10	3	54	16	0	1288	51	1288	59	1288	289	1288	93
P.H.O.L. - Kingston	29690	4844	2962	5	92	38	135	2	2961	180	2398	0	0	0	0	99	2399	28	2399	76	2398	308	2399	93
UHN / Mount Sinai Hospital	95172	7271	22540	7	44	350	401	51	22540	304	2079	2	2	32	1	0	2046	7	2079	15	2079	67	2079	85
P.H.O.L. - Toronto	51153	10836	27668	120	2414	148	1131	41	27638	1337	24430	0	0	0	0	973	24434	474	24430	925	24430	2261	24430	1218
Sick Kids Hospital - Toronto	0	0	0	0	0	0	0	0	0	0	0	0	0	0	0	0	0	0	0	0	0	0	0	0
Shared Hospital Laboratory	83915	5922	83916	119	1471	727	2317	280	83917	2208	61185	4	0	16	0	670	61198	620	61467	914	61415	2103	61307	978
P.H.O.L. - Sault Ste. Marie	1744	328	675	1	52	15	58	0	675	25	601	0	0	0	0	52	601	4	601	30	601	44	601	44
P.H.O.L. - Timmins	9046	847	1005	0	161	6	156	0	1003	98	948	0	0	0	0	54	948	14	948	27	948	83	948	41
St. Joseph's - London	122140	15046	20655	0	0	886	886	67	20655	1016	2149	0	0	0	0	79	2183	73	2183	66	2183	312	1771	102
P.H.O.L. - London	36974	7821	11073	13	585	63	643	21	11072	883	8868	0	0	0	0	427	8869	119	8869	225	8868	862	8869	305
P.H.O.L. - Orillia	563	261	2313	6	261	23	290	8	2313	230	2240	0	0	0	0	128	2241	61	2240	78	2240	322	2240	104
P.H.O.L. - Thunder Bay	8452	1706	1065	0	107	3	110	0	1064	96	940	0	0	0	0	38	940	18	940	27	940	110	941	37
P.H.O.L. - Sudbury	2076	300	775	1	65	14	67	0	775	78	661	0	0	0	0	29	661	7	661	44	661	38	661	25
P.H.O.L. - Hamilton	25685	6835	9188	8	301	92	400	32	9185	552	6713	0	0	0	0	259	6715	136	6713	227	6713	654	6713	277
P.H.O.L. - Peterborough	5191	1002	1423	0	67	11	78	7	1423	115	1129	0	0	0	0	44	1129	14	1129	39	1129	164	1129	42
St. Joseph's - Hamilton	96543	13441	47066	0	0	2729	2729	403	47066	2276	47066	0	0	1004	0	0	47066	622	47066	878	47066	3152	0	0
Sault Area Hospital	12265	2104	8181	1	262	258	521	4	8181	167	2647	35	5	65	4	0	2647	43	2647	100	2647	258	2647	79
<b>Province of Ontario</b>	<b>696875</b>	<b>94364</b>	<b>262034</b>	<b>298</b>	<b>6018</b>	<b>6836</b>	<b>11543</b>	<b>957</b>	<b>261997</b>	<b>11214</b>	<b>169205</b>	<b>51</b>	<b>10</b>	<b>1171</b>	<b>21</b>	<b>2961</b>	<b>169228</b>	<b>2307</b>	<b>169523</b>	<b>3842</b>	<b>169469</b>	<b>11379</b>	<b>121886</b>	<b>3709</b>
Manitoba	69357	11553	40807	17	202	1792	2011	41	40807	1773	5257	35	30	172	6	0	5247	134	5545	214	5257	770	5545	214
Saskatchewan	164235	13371	40645	2	41	3892	3935	65	32679	2211	13543	103	92	522	44	0	13546	349	13549	655	13547	1402	13542	493
Alberta	230566	33290	126667	997	7294	2836	11127	624	111871	7642	44237	325	105	926	125	0	44222	610	44175	1262	43483	4041	44237	1235
<b>Prairies</b>	<b>464158</b>	<b>58214</b>	<b>208119</b>	<b>1016</b>	<b>7537</b>	<b>8520</b>	<b>17073</b>	<b>730</b>	<b>185357</b>	<b>11626</b>	<b>63037</b>	<b>463</b>	<b>227</b>	<b>1620</b>	<b>175</b>	<b>0</b>	<b>63015</b>	<b>1093</b>	<b>63269</b>	<b>2131</b>	<b>62287</b>	<b>6213</b>	<b>63324</b>	<b>1942</b>
<b>British Columbia</b>	<b>230472</b>	<b>24739</b>	<b>130023</b>	<b>407</b>	<b>4354</b>	<b>304</b>	<b>8904</b>	<b>289</b>	<b>121946</b>	<b>8207</b>	<b>27762</b>	<b>259</b>	<b>192</b>	<b>1070</b>	<b>156</b>	<b>6</b>	<b>27772</b>	<b>813</b>	<b>27772</b>	<b>1094</b>	<b>26897</b>	<b>4153</b>	<b>26894</b>	<b>1069</b>
Yukon	5092	388	893	2	136	0	138	9	891	59	N.C.	N.C.	N.C.	N.C.	N.C.	N.C.	N.C.	N.C.	N.C.	N.C.	N.C.	N.C.	N.C.	N.C.
Northwest Territories	1614	188	1464	2	147	1	150	4	1464	103	N.C.	N.C.	N.C.	N.C.	N.C.	N.C.	N.C.	N.C.	N.C.	N.C.	N.C.	1464	291	N.C.
Nunavut	4670	384	2599	4	230	3	237	176	2599	128	N.C.	N.C.	N.C.	N.C.	N.C.	N.C.	N.C.	N.C.	N.C.	N.C.	N.C.	N.C.	N.C.	N.C.
<b>Territories</b>	<b>11376</b>	<b>960</b>	<b>4956</b>	<b>8</b>	<b>513</b>	<b>4</b>	<b>525</b>	<b>189</b>	<b>4954</b>	<b>290</b>	<b>N.C.</b>	<b>N.C.</b>	<b>N.C.</b>	<b>N.C.</b>	<b>N.C.</b>	<b>N.C.</b>	<b>N.C.</b>	<b>N.C.</b>	<b>N.C.</b>	<b>N.C.</b>	<b>N.C.</b>	<b>1464</b>	<b>291</b>	<b>N.C.</b>
<b>CANADA</b>	<b>2575657</b>	<b>335653</b>	<b>949963</b>	<b>1751</b>	<b>18944</b>	<b>43346</b>	<b>66271</b>	<b>4170</b>	<b>822718</b>	<b>46200</b>	<b>309810</b>	<b>1088</b>	<b>561</b>	<b>5238</b>	<b>478</b>	<b>2967</b>	<b>310305</b>	<b>6828</b>	<b>310505</b>	<b>9024</b>	<b>277760</b>	<b>24239</b>	<b>261548</b>	<b>8812</b>

The data in the RVDSS report represent surveillance data available at the time of writing. Data not collected by reporting lab denoted by N.C.

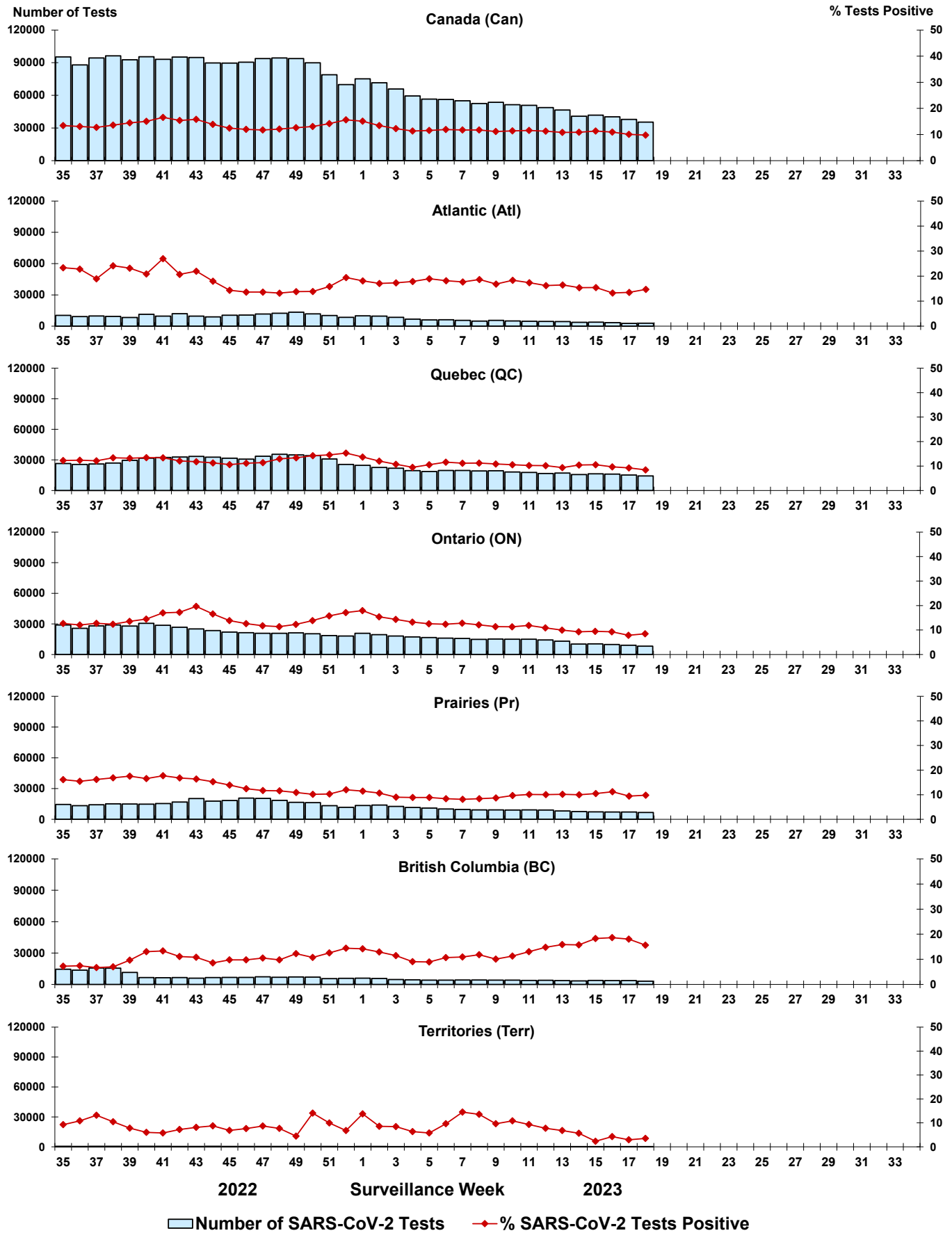
Some specimens from Yukon (YT) are sent to reference laboratories in British Columbia and reported results reflect specimens identified as originating from YT.

Results from British Columbia comprise of specimens from the following sites: Children's and Women's Hospital Laboratory, Fraser Health Medical Microbiology Laboratory, Island Health, Providence Health Care, Vancouver Coastal Health sites, Victoria General Hospital, BCCDC Public Health Laboratory, Interior Health Authority sites and Northern Health Authority sites.

Due to different testing protocols of laboratories across Canada, influenza A subtype detection counts may not be included in total influenza A detection counts. Total influenza A and B positive counts are used to calculate percentage of tests

Delays in the reporting of data may cause data to change retrospectively. Due to these delays, the sum of weekly report totals do not add up to cumulative totals.

**Figure 3: Positive severe acute respiratory syndrome coronavirus 2 (SARS-CoV-2) tests (%) in Canada by region by surveillance week**



Note: Differences in positivity between jurisdictions can reflect differences in testing practices. Please interpret with caution.

Figure 4: Positive Influenza (Flu) tests (%) in Canada by region by surveillance week

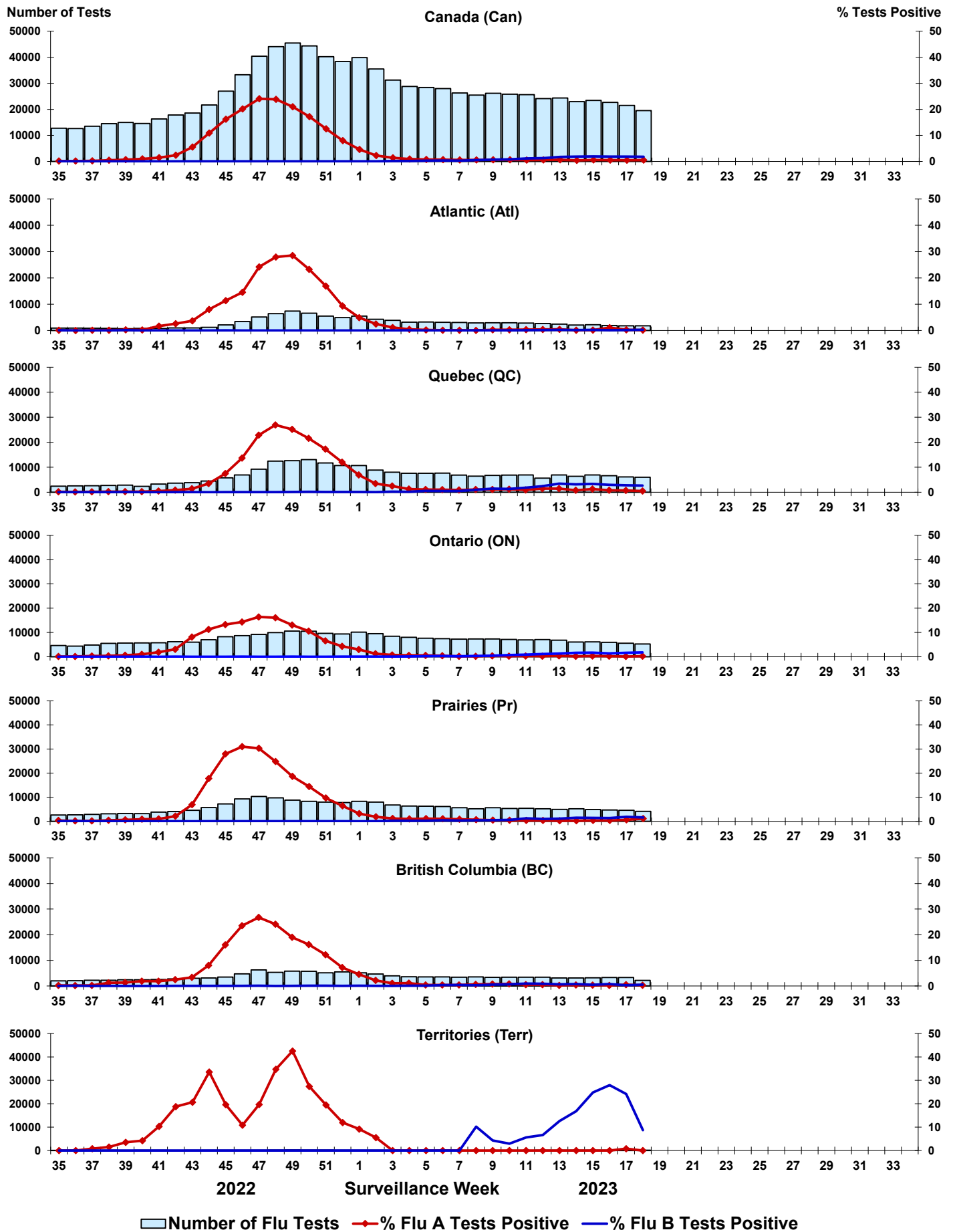


Figure 5: Positive Respiratory syncytial virus (RSV) tests (%) in Canada by region by surveillance week

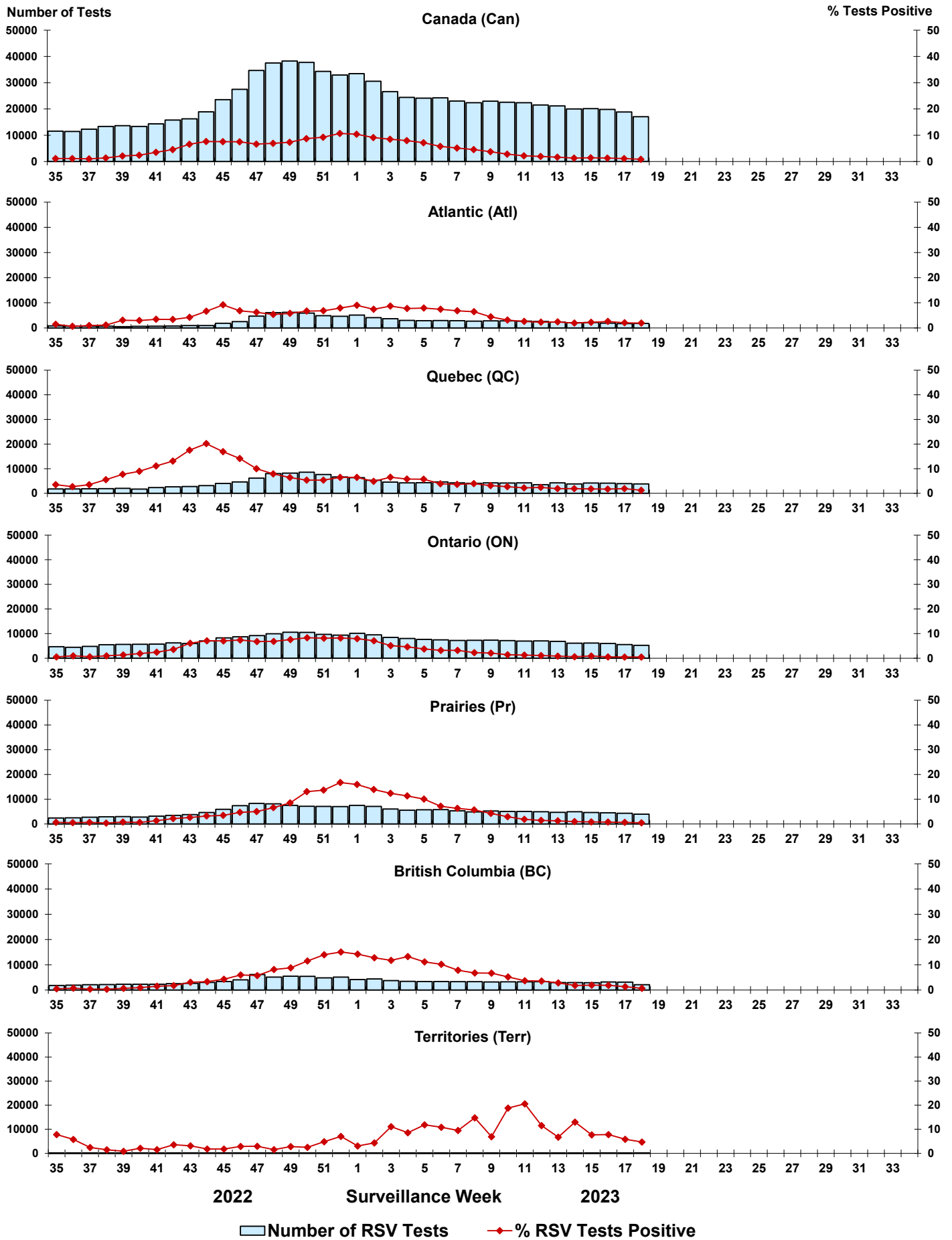




Figure 6: Positive Human parainfluenza virus (HPIV) tests (%) in Canada by region by surveillance week

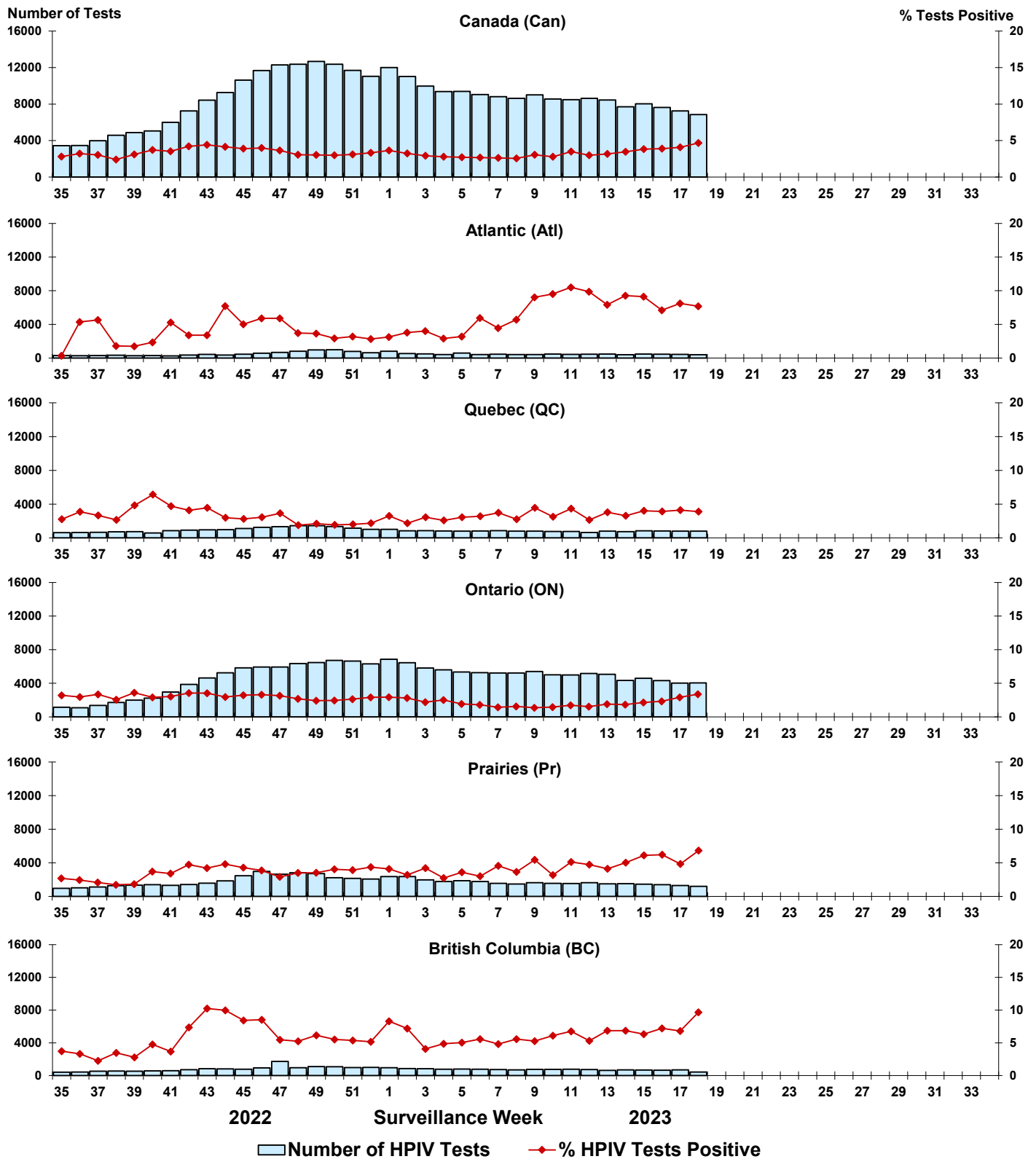


Figure 7: Positive Adenovirus (ADV) tests (%) in Canada by region by surveillance week

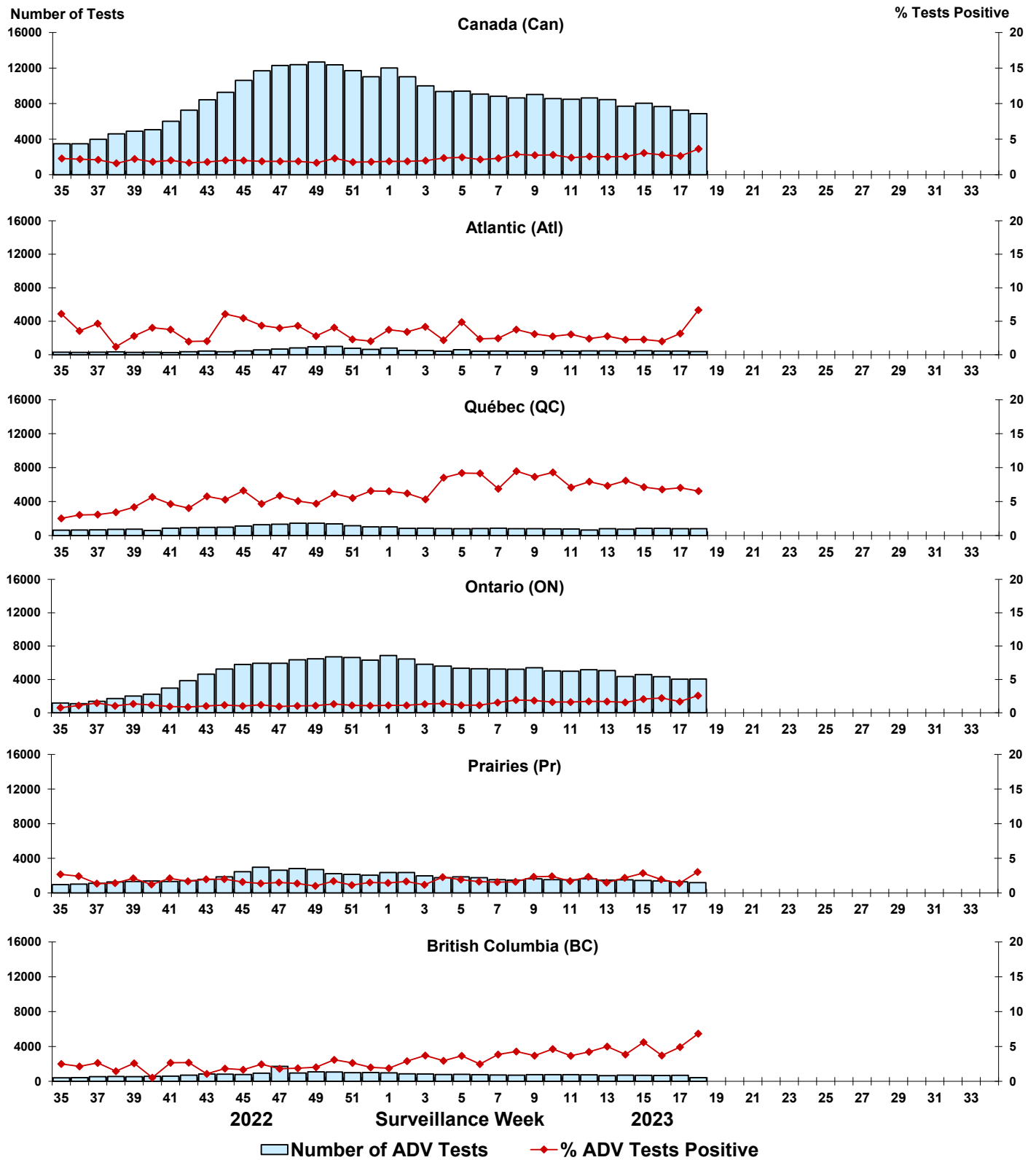


Figure 8: Positive Human metapneumovirus (HMPV) tests (%) in Canada by region by surveillance week

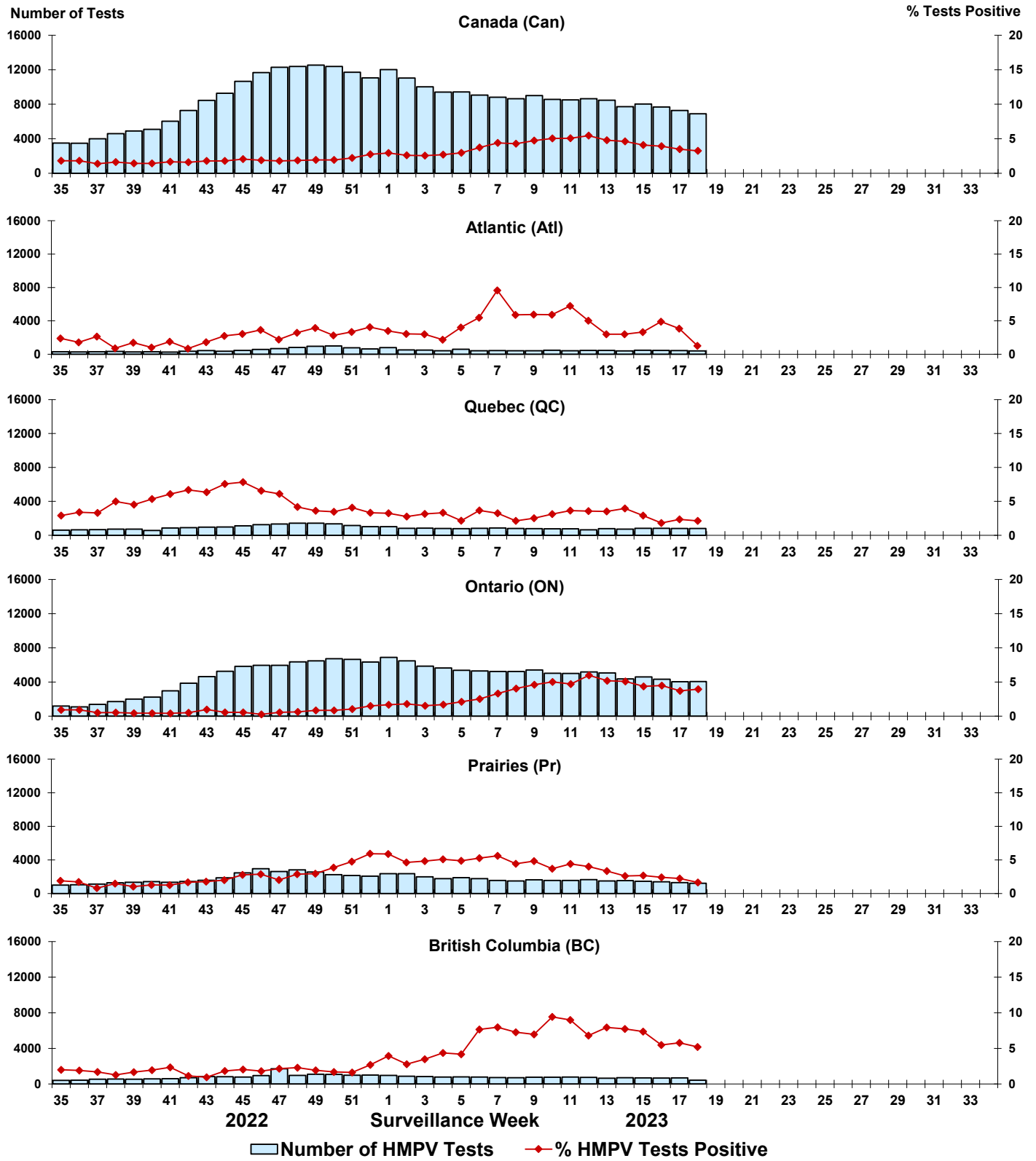


Figure 9: Positive Enterovirus/Rhinovirus (EV/RV) tests (%) in Canada by region by surveillance week

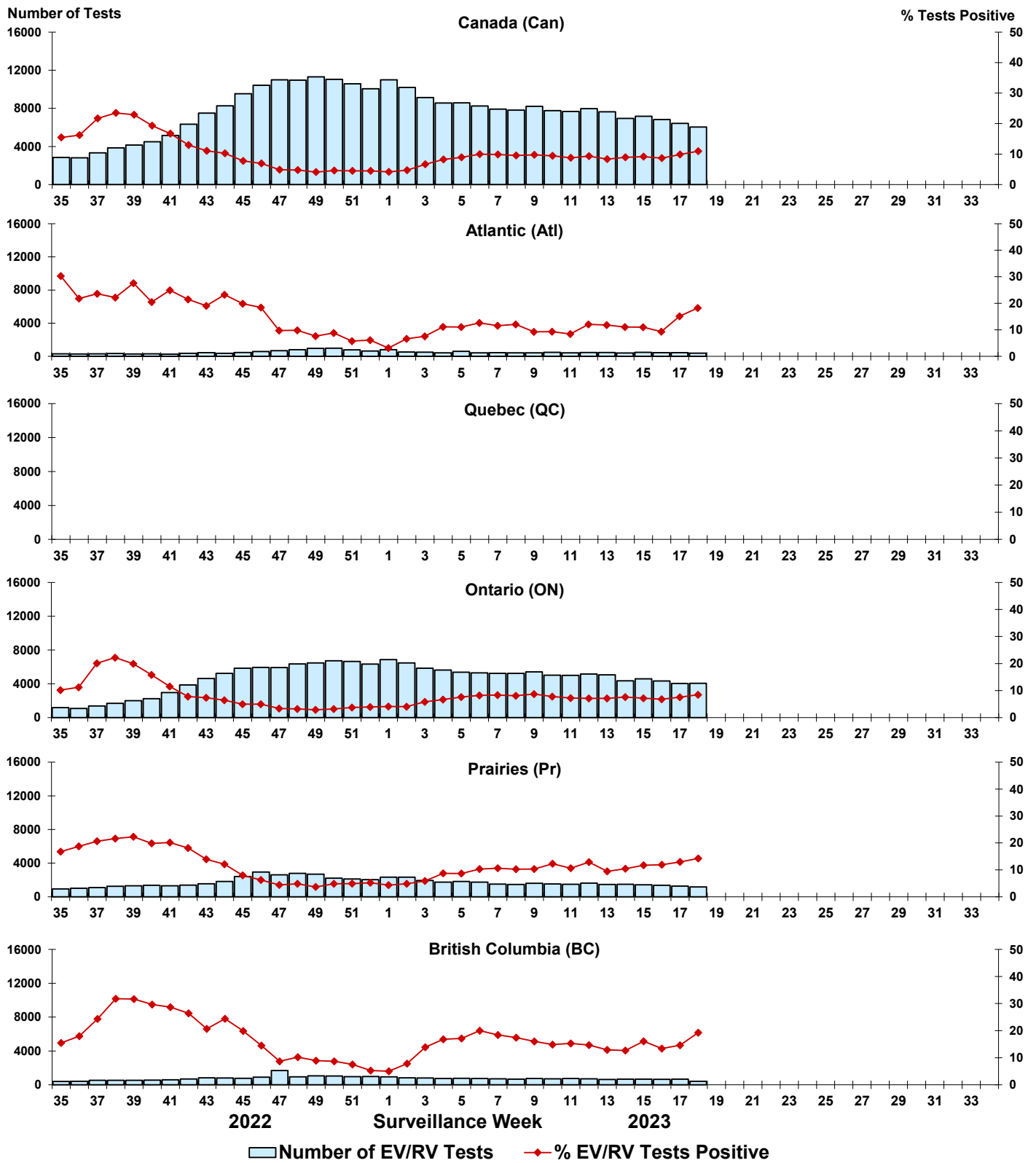


Figure 10: Positive Human coronavirus (HCoV) tests (%) in Canada by region by surveillance week

