

# RESPIRATORY VIRUS DETECTION REPORT

June 25 to July 1, 2023  
(Surveillance Week 2023-26)



Please note that the Respiratory Virus Detection Surveillance System (RVDSS) is a sentinel laboratory surveillance system that does not capture all respiratory virus testing performed in Canada; differences may exist between the data presented in this report and provincial/territorial epidemiological reports. SARS-CoV-2 laboratory data is included in this report to facilitate the comparison of positivity with other respiratory viruses. Interpretation should be made with caution as testing practices differ among viruses.

For additional SARS-CoV-2 surveillance information, please refer to the [COVID-19 epidemiology update](#).

## Overall Summary

In week 26 (week ending July 1, 2023) in Canada, participating RVDSS laboratories reported 1,163 detections of SARS-CoV-2 from 20,073 tests (5.8% positive). Among non-SARS-CoV-2 respiratory viruses, where test volumes are lower (range of 3,803 to 12,657 tests), activity of enterovirus/rhinovirus is highest.

- While activity of enterovirus/rhinovirus is highest, it remains below expected levels typical of this time of year (497 detections; 12.4% positive).
- Activity of all other non-SARS-CoV-2 respiratory viruses is near or below expected levels typical of this time of year.
- 34/35 sentinel laboratories reported surveillance data

## Abbreviations

ADV: Adenovirus

Atl: Atlantic Canada

BC: British Columbia

Can: Canada

EORLA: Eastern Ontario Regional Laboratory Association

EV/RV: Enterovirus/Rhinovirus

Flu: Influenza

Flu A(H1N1)pdm09: Influenza A(H1N1)pdm09

Flu A(H3): Influenza A(H3N2)

Flu A (UnS): Influenza A(Unsubtyped)

HCoV: Human coronavirus 229E/OC43/NL63/HKU1

HMPV: Human metapneumovirus

HPIV: Human parainfluenza virus

HSC: Health Sciences Centre

N.C.: Data not collected

N.R.: Data not reported for current week

ON: Ontario

PR: Prairies

P.H.O.L.: Public Health Ontario Laboratory

QC: Quebec

RSV: Respiratory syncytial virus

RVDSS: Respiratory Virus Detection Surveillance System

SARS-CoV-2: Severe acute respiratory syndrome coronavirus 2

Terr: Territories of Canada

UHN: University Health Network

© His Majesty the King in Right of Canada, as represented by the Minister of Health, 2021

ISSN: 2564-2359 | Cat.: HP38-7E-PDF | Pub.: 210284

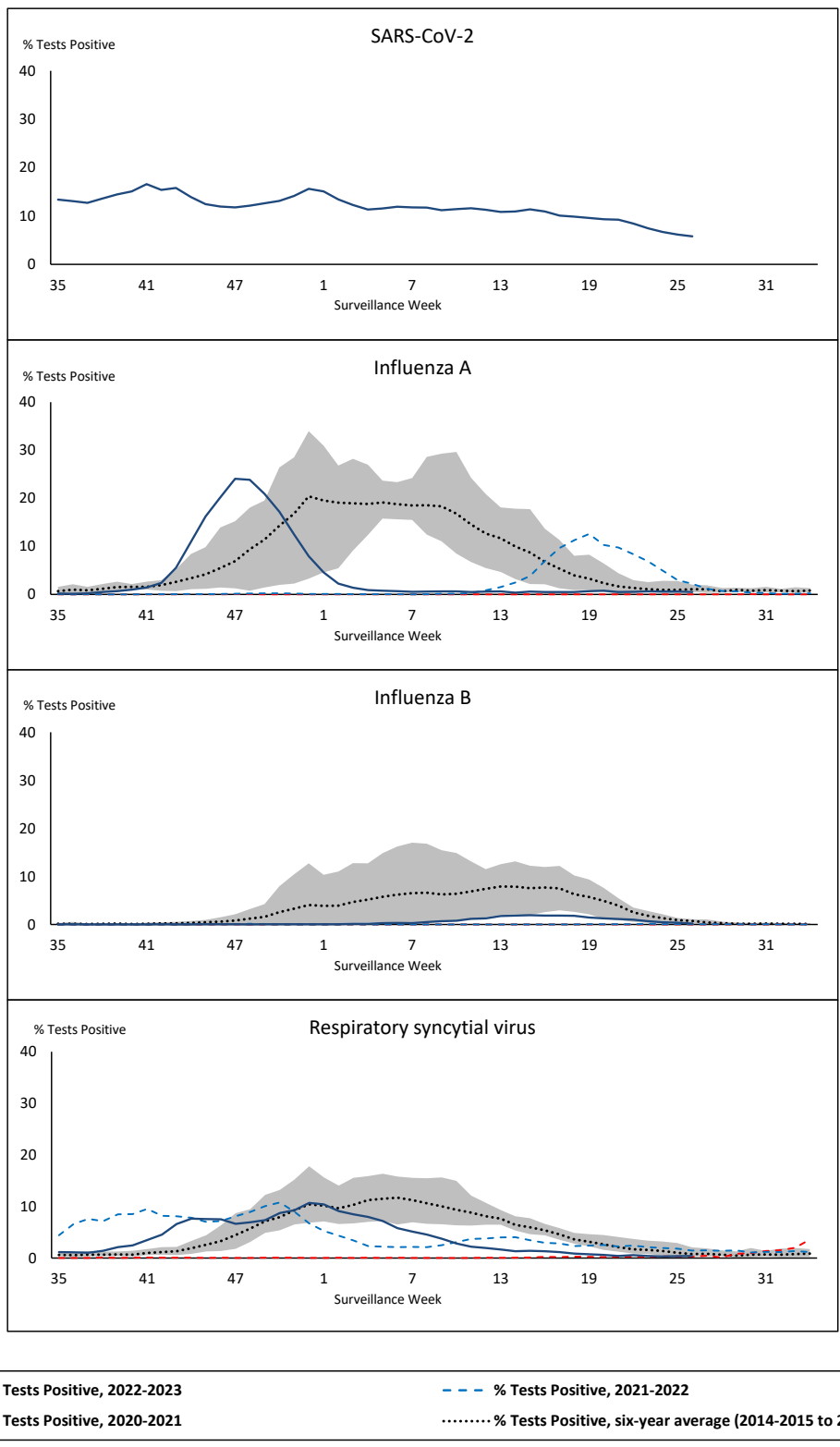


Public Health  
Agency of Canada

Agence de la santé  
publique du Canada

Canada

**Figure 1: Positive severe acute respiratory syndrome coronavirus 2 (SARS-CoV-2), influenza, and respiratory syncytial virus tests (%) reported by participating laboratories in Canada by surveillance week compared to average and range from 2014-2015 to 2019-2020 season**



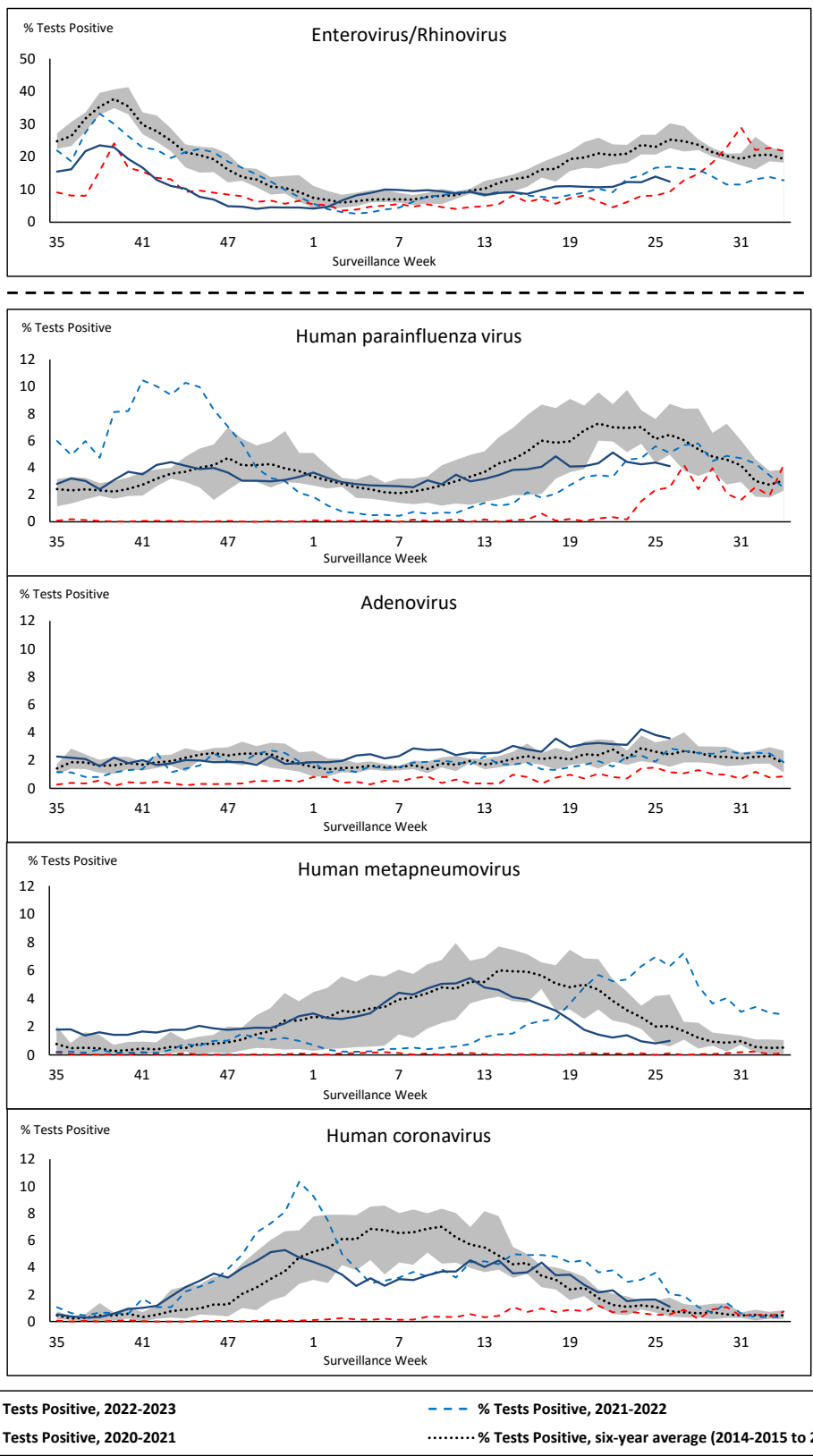
Shaded area represents the maximum and minimum % of respiratory virus tests positive reported by week from seasons 2014-2015 to 2019-2020

Note: Changes to testing practices during the COVID-19 pandemic may cause substantial changes to indicator estimates from previous years. Collection of laboratory testing practice meta-data to understand these changes is ongoing. Interpret trends with caution.

Note: SARS-CoV-2 surveillance was integrated into RVDSS at the beginning of the 2022-2023 season; no appropriate data is available for historical comparison.

Note: Data from week 11 of the 2019-2020 season onwards are excluded from the historical comparison due to the COVID-19 pandemic.

**Figure 2: Positive tests (%) of other respiratory viruses reported by participating laboratories in Canada by surveillance week compared to average and range from 2014-2015 to 2019-2020 season**



Shaded area represents the maximum and minimum % of respiratory virus tests positive reported by week from seasons 2014-2015 to 2019-2020

Note: Changes to testing practices during the COVID-19 pandemic may cause substantial changes to indicator estimates from previous years. Collection of laboratory testing practice meta-data to understand these changes is ongoing. Interpret trends with caution.

Note: Data from week 11 of the 2019-2020 season onwards are excluded from the historical comparison due to the COVID-19 pandemic.

Note: % Tests Positive scale changes across the dashed line

**Table 1: Respiratory virus detections for the week ending July 1, 2023 (surveillance week 2023-26)**

Reporting Laboratory	SARS-CoV-2 Tested	SARS-CoV-2 Positive	Flu Tested	A(H1)pdm09 Positive	A(H3) Positive	A(UnS) Positive	Total Flu A Positive	Total Flu B Positive	RSV Tested	RSV Positive	HPIV Tested	HPIV 1 Positive	HPIV 2 Positive	HPIV 3 Positive	HPIV 4 Positive	Other HPIV Positive	ADV Tested	ADV Positive	HMPV Tested	HMPV Positive	EV/RV Tested	EV/RV Positive	HCoV Tested	HCoV Positive	
Newfoundland	304	45	203	0	0	1	1	0	203	5	203	4	0	2	2	0	203	8	203	1	203	21	203	6	
Prince Edward Island	73	11	10	0	0	0	0	0	10	0	6	0	0	0	0	0	6	0	6	0	6	1	6	0	
Nova Scotia	929	64	624	0	0	1	1	0	624	2	19	0	0	0	1	0	19	0	19	0	19	7	19	0	
New Brunswick	522	23	483	1	0	0	1	0	480	2	53	2	0	0	0	0	53	3	53	0	53	11	53	0	
<b>Atlantic</b>	<b>1828</b>	<b>143</b>	<b>1320</b>	<b>1</b>	<b>0</b>	<b>2</b>	<b>3</b>	<b>0</b>	<b>1317</b>	<b>9</b>	<b>281</b>	<b>6</b>	<b>0</b>	<b>2</b>	<b>3</b>	<b>0</b>	<b>281</b>	<b>11</b>	<b>281</b>	<b>1</b>	<b>281</b>	<b>40</b>	<b>281</b>	<b>6</b>	
Région Nord-Est	1209	88	930	0	0	2	2	2	215	1	53	0	1	0	1	0	53	5	49	0	N.C.	N.C.	53	0	
Québec-Chaudière-Appalaches	1509	69	320	0	0	0	0	2	320	4	154	0	1	1	3	0	171	7	154	2	N.C.	N.C.	154	1	
Centre-du-Québec	917	45	121	0	0	1	1	2	119	0	21	0	0	0	1	0	21	0	21	0	N.C.	N.C.	21	0	
Montréal-Laval	1950	119	1012	0	0	6	6	3	983	5	472	2	0	6	16	0	472	9	475	7	N.C.	N.C.	472	1	
Ouest du Québec	832	58	269	0	0	1	1	1	267	2	10	0	0	0	1	0	10	0	10	0	N.C.	N.C.	10	0	
Montérégie	774	41	676	0	0	0	0	4	659	6	7	0	0	0	0	0	7	0	7	0	N.C.	N.C.	7	0	
<b>Province of Québec</b>	<b>7191</b>	<b>420</b>	<b>3328</b>	<b>0</b>	<b>0</b>	<b>10</b>	<b>10</b>	<b>14</b>	<b>2563</b>	<b>18</b>	<b>717</b>	<b>2</b>	<b>2</b>	<b>7</b>	<b>22</b>	<b>0</b>	<b>734</b>	<b>21</b>	<b>716</b>	<b>9</b>	<b>N.C.</b>	<b>N.C.</b>	<b>717</b>	<b>2</b>	
P.H.O.L. - Ottawa	101	6	53	1	0	0	1	0	53	0	39	0	0	0	0	1	39	1	39	0	39	12	39	0	
EOURLA	590	19	187	0	0	0	0	0	187	1	25	0	0	0	1	0	25	1	25	2	25	7	25	0	
P.H.O.L. - Kingston	101	12	46	1	0	0	0	0	46	0	43	0	0	0	0	3	43	0	43	0	43	9	43	0	
UHN / Mount Sinai Hospital	803	32	462	0	0	0	0	0	462	0	25	0	0	1	0	0	25	0	25	0	25	1	25	0	
P.H.O.L. - Toronto	180	34	487	4	0	0	0	2	487	3	456	0	0	0	0	41	456	18	456	14	456	62	456	11	
Sick Kids Hospital - Toronto	N.R.	N.R.	N.R.	N.R.	N.R.	N.R.	N.R.	N.R.	N.R.	N.R.	N.R.	N.R.	N.R.	N.R.	N.R.	N.R.	N.R.	N.R.	N.R.	N.R.	N.R.	N.R.	N.R.	N.R.	N.R.
Shared Hospital Laboratory	769	18	769	3	1	1	5	1	769	3	769	0	0	0	0	27	769	15	772	0	772	48	772	8	
P.H.O.L. - Sault Ste. Marie	4	0	5	0	0	0	0	0	5	0	5	0	0	0	0	0	5	0	5	0	5	0	5	0	
P.H.O.L. - Timmins	8	0	5	0	0	0	0	0	5	0	5	0	0	0	0	0	5	0	5	0	5	1	5	0	
St. Joseph's - London	555	28	57	0	0	0	0	0	57	0	57	0	0	0	0	2	57	1	57	0	57	6	57	0	
P.H.O.L. - London	190	9	143	1	0	0	1	0	143	0	140	0	0	0	0	10	140	2	140	5	140	25	140	0	
P.H.O.L. - Orillia	7	2	28	0	0	0	0	0	28	4	28	0	0	0	0	3	28	2	28	0	28	6	28	0	
P.H.O.L. - Thunder Bay	8	0	1	0	0	0	0	0	1	0	0	0	0	0	0	0	0	0	0	0	0	0	0	0	
P.H.O.L. - Sudbury	4	1	10	0	0	0	0	0	10	0	10	0	0	0	0	0	10	0	10	1	10	2	10	0	
P.H.O.L. - Hamilton	170	23	101	0	0	0	0	0	101	2	94	0	0	0	0	6	94	7	94	1	94	12	94	0	
P.H.O.L. - Peterborough	29	3	50	0	0	0	0	0	50	0	50	0	0	0	0	4	50	4	50	0	50	16	50	0	
St. Joseph's - Hamilton	1088	62	934	0	0	0	0	4	934	0	934	0	0	11	0	0	934	33	934	7	934	37	0	0	
Sault Area Hospital	64	5	64	0	0	0	0	0	64	0	32	0	0	0	0	0	32	1	32	0	32	0	32	0	
<b>Province of Ontario</b>	<b>4671</b>	<b>254</b>	<b>3402</b>	<b>10</b>	<b>1</b>	<b>1</b>	<b>7</b>	<b>7</b>	<b>3402</b>	<b>13</b>	<b>2712</b>	<b>0</b>	<b>0</b>	<b>12</b>	<b>1</b>	<b>97</b>	<b>2712</b>	<b>85</b>	<b>2715</b>	<b>30</b>	<b>2715</b>	<b>244</b>	<b>1781</b>	<b>19</b>	
Manitoba	811	28	731	0	0	2	2	1	731	0	56	0	3	0	1	0	56	3	80	0	56	23	80	0	
Saskatchewan	1064	34	453	0	0	4	4	0	448	0	208	2	1	0	10	0	208	20	208	2	208	67	208	6	
Alberta	2334	104	1810	8	0	2	10	2	1737	2	481	2	4	1	0	0	480	12	479	1	474	78	480	6	
<b>Prairies</b>	<b>4209</b>	<b>166</b>	<b>2994</b>	<b>8</b>	<b>0</b>	<b>8</b>	<b>16</b>	<b>3</b>	<b>2916</b>	<b>2</b>	<b>745</b>	<b>4</b>	<b>8</b>	<b>1</b>	<b>11</b>	<b>0</b>	<b>744</b>	<b>35</b>	<b>767</b>	<b>3</b>	<b>738</b>	<b>168</b>	<b>768</b>	<b>12</b>	
<b>British Columbia</b>	<b>2070</b>	<b>180</b>	<b>1543</b>	<b>11</b>	<b>0</b>	<b>1</b>	<b>26</b>	<b>0</b>	<b>1543</b>	<b>3</b>	<b>278</b>	<b>5</b>	<b>1</b>	<b>3</b>	<b>8</b>	<b>0</b>	<b>278</b>	<b>18</b>	<b>278</b>	<b>4</b>	<b>256</b>	<b>40</b>	<b>256</b>	<b>3</b>	
Yukon	37	0	15	0	0	0	0	0	15	1	N.C.	N.C.	N.C.	N.C.	N.C.	N.C.	N.C.	N.C.	N.C.	N.C.	N.C.	N.C.	N.C.	N.C.	
Northwest Territories	12	0	11	0	0	0	0	0	11	0	N.C.	N.C.	N.C.	N.C.	N.C.	N.C.	N.C.	N.C.	N.C.	N.C.	N.C.	11	5	N.C.	N.C.
Nunavut	55	0	44	0	0	0	0	0	44	0	N.C.	N.C.	N.C.	N.C.	N.C.	N.C.	N.C.	N.C.	N.C.	N.C.	N.C.	N.C.	N.C.	N.C.	
<b>Territories</b>	<b>104</b>	<b>0</b>	<b>70</b>	<b>0</b>	<b>0</b>	<b>0</b>	<b>0</b>	<b>0</b>	<b>70</b>	<b>1</b>	<b>N.C.</b>	<b>N.C.</b>	<b>N.C.</b>	<b>N.C.</b>	<b>N.C.</b>	<b>N.C.</b>	<b>N.C.</b>	<b>N.C.</b>	<b>N.C.</b>	<b>N.C.</b>	<b>N.C.</b>	<b>11</b>	<b>5</b>	<b>N.C.</b>	<b>N.C.</b>
<b>CANADA</b>	<b>20073</b>	<b>1163</b>	<b>12657</b>	<b>30</b>	<b>1</b>	<b>22</b>	<b>62</b>	<b>24</b>	<b>11811</b>	<b>46</b>	<b>4733</b>	<b>17</b>	<b>11</b>	<b>25</b>	<b>45</b>	<b>97</b>	<b>4749</b>	<b>170</b>	<b>4757</b>	<b>47</b>	<b>4001</b>	<b>497</b>	<b>3803</b>	<b>42</b>	

The data in the RVDSS report represent surveillance data available at the time of writing. Data missing from the current week are denoted by N.R. Data not collected by reporting lab denoted by N.C.

Some specimens from Yukon (YT) are sent to reference laboratories in British Columbia and reported results reflect specimens identified as originating from YT.

Results from British Columbia comprise of specimens from the following sites: Children's and Women's Hospital Laboratory, Fraser Health Medical Microbiology Laboratory, Island Health, Providence Health Care, Vancouver Coastal Health sites, Victoria General Hospital, BCCDC Public Health Laboratory, Interior Health Authority sites and Northern Health Authority sites.

Due to different testing protocols of laboratories across Canada, influenza A subtype detection counts may not be included in total influenza A detection counts. Total influenza A and B positive counts are used to calculate percentage of tests

Delays in the reporting of data may cause data to change retrospectively.

**Table 2: Cumulative respiratory virus detections from August 28, 2022 to July 1, 2023 (surveillance weeks 2022-35 to 2023-26)**

Reporting Laboratory	SARS-CoV-2 Tested	SARS-CoV-2 Positive	Flu Tested	A(H1)pdm09 Positive	A(H3) Positive	A(UnS) Positive	Total Flu A Positive	Total Flu B Positive	RSV Tested	RSV Positive	HPIV Tested	HPIV 1 Positive	HPIV 2 Positive	HPIV 3 Positive	HPIV 4 Positive	Other HPIV Positive	ADV Tested	ADV Positive	HMPV Tested	HMPV Positive	EV/RV Tested	EV/RV Positive	HCoV Tested	HCoV Positive
Newfoundland	23469	4075	13660	8	246	677	931	10	13660	625	13660	68	33	384	141	0	13660	276	13660	386	13660	1178	13660	560
Prince Edward Island	33417	7314	4081	1	119	248	368	4	4081	384	1173	20	27	81	7	0	1173	79	1173	39	1173	343	1173	35
Nova Scotia	136018	26322	45795	0	4	3650	3654	15	45786	2425	1442	10	16	34	5	0	1449	57	1439	45	1449	272	1449	61
New Brunswick	109941	15999	51718	24	133	4435	4592	30	43667	2058	4019	35	32	166	8	0	4019	276	4019	186	4019	752	3964	235
<b>Atlantic</b>	<b>302845</b>	<b>53710</b>	<b>115254</b>	<b>33</b>	<b>502</b>	<b>9010</b>	<b>9545</b>	<b>59</b>	<b>107194</b>	<b>5492</b>	<b>20294</b>	<b>133</b>	<b>108</b>	<b>665</b>	<b>161</b>	<b>0</b>	<b>20301</b>	<b>688</b>	<b>20291</b>	<b>656</b>	<b>20301</b>	<b>2545</b>	<b>20246</b>	<b>891</b>
Région Nord-Est	99163	11766	59847	0	4	3887	3891	93	17455	1388	1881	31	8	94	3	0	1882	152	1866	98	N.C.	N.C.	1882	112
Québec-Chaudière-Appalaches	199588	18596	28067	0	0	2908	2908	181	27377	1947	8323	25	6	97	16	0	9011	737	8323	363	N.C.	N.C.	8323	343
Centre-du-Québec	163571	21819	16805	0	0	1783	1783	119	15043	993	1194	15	1	53	14	0	1194	133	1194	74	N.C.	N.C.	1194	72
Montréal-Laval	226100	27081	110968	0	9	6306	6315	1583	61679	2787	25288	144	26	585	82	0	25297	1097	25450	831	N.C.	N.C.	24973	806
Ouest du Québec	122273	15376	25502	0	7	2201	2208	192	23202	1328	1146	22	0	68	8	0	1145	202	1146	63	N.C.	N.C.	1147	63
Montréal	154243	17216	34979	0	0	1813	1813	264	31719	1224	180	0	0	2	0	0	180	4	180	6	N.C.	N.C.	180	5
<b>Province of Québec</b>	<b>964938</b>	<b>111854</b>	<b>276168</b>	<b>0</b>	<b>20</b>	<b>18898</b>	<b>18918</b>	<b>2432</b>	<b>176475</b>	<b>9667</b>	<b>38012</b>	<b>237</b>	<b>41</b>	<b>899</b>	<b>123</b>	<b>0</b>	<b>38709</b>	<b>2325</b>	<b>38159</b>	<b>1435</b>	<b>N.C.</b>	<b>N.C.</b>	<b>37699</b>	<b>1401</b>
P.H.O.L. - Ottawa	29794	7487	6061	24	136	66	220	3	6061	355	4257	0	0	0	0	131	4257	20	4257	115	4257	409	4257	210
EORLA	93906	8911	17976	0	0	1417	1417	56	17976	1304	1501	11	5	59	20	0	1501	54	1501	63	1501	330	1501	102
P.H.O.L. - Kingston	31731	4994	3369	6	92	38	135	3	3368	180	2698	0	0	0	0	124	2699	30	2699	81	2698	347	2699	104
UHN / Mount Sinai Hospital	102572	7680	26611	7	44	358	409	58	26611	319	2291	2	2	43	4	0	2258	7	2291	15	2291	84	2291	91
P.H.O.L. - Toronto	53992	11407	32158	161	2415	155	1161	75	32126	1356	28578	0	0	0	0	1277	28582	615	28575	1081	28578	2854	28575	1365
Sick Kids Hospital - Toronto	0	0	0	0	0	0	0	0	0	0	0	0	0	0	0	0	0	0	0	0	0	0	0	0
Shared Hospital Laboratory	91427	6300	91427	134	1473	728	2335	385	91428	2221	68714	4	0	16	0	861	68727	735	69013	961	68961	2480	68853	1066
P.H.O.L. - Sault Ste. Marie	1879	346	738	1	52	15	58	0	738	25	648	0	0	0	0	54	648	4	648	31	648	52	648	44
P.H.O.L. - Timmins	9470	907	1136	0	161	6	156	0	1134	98	1045	0	0	0	0	56	1045	14	1045	29	1045	89	1045	49
St. Joseph's - London	127957	15380	21326	0	0	886	886	70	21326	1016	2490	0	0	0	0	92	2524	85	2524	72	2524	354	2113	108
P.H.O.L. - London	39043	8119	12244	16	586	63	647	27	12243	888	9925	0	0	0	0	516	9926	143	9926	258	9925	989	9926	330
P.H.O.L. - Orillia	644	273	2534	6	261	23	290	15	2534	237	2456	0	0	0	0	143	2457	81	2456	83	2456	373	2456	108
P.H.O.L. - Thunder Bay	8713	1726	1124	0	107	3	110	0	1123	96	994	0	0	0	0	38	994	19	994	29	994	119	995	38
P.H.O.L. - Sudbury	2179	322	849	1	65	14	67	0	849	79	728	0	0	0	0	30	728	9	728	46	728	47	728	25
P.H.O.L. - Hamilton	27069	7106	10154	34	302	92	412	40	10151	557	7641	0	0	0	0	321	7643	194	7641	261	7641	786	7641	296
P.H.O.L. - Peterborough	5549	1031	1863	1	67	11	79	19	1863	116	1528	0	0	0	0	66	1528	39	1528	50	1528	293	1528	50
St. Joseph's - Hamilton	106419	13952	55393	0	0	2765	2765	517	55393	2291	55393	0	0	1125	0	0	55393	899	55393	942	55393	3623	0	0
Sault Area Hospital	12886	2148	8802	1	262	258	521	8	8802	173	3049	36	9	74	4	0	3049	53	3049	101	3049	341	3049	84
<b>Province of Ontario</b>	<b>745230</b>	<b>98089</b>	<b>293765</b>	<b>392</b>	<b>6023</b>	<b>6898</b>	<b>11668</b>	<b>1276</b>	<b>293726</b>	<b>11311</b>	<b>193936</b>	<b>53</b>	<b>16</b>	<b>1317</b>	<b>28</b>	<b>3709</b>	<b>193959</b>	<b>3001</b>	<b>194268</b>	<b>4218</b>	<b>194217</b>	<b>13570</b>	<b>138305</b>	<b>4070</b>
Manitoba	77320	12168	47553	18	202	1809	2029	80	47553	1794	5855	47	48	175	9	0	5845	156	6289	226	5855	955	6289	224
Saskatchewan	174619	13841	45335	2	41	3991	4034	80	37077	2217	15267	162	117	532	94	0	15269	422	15269	684	15270	1783	15265	529
Alberta	253152	34816	144550	1074	7306	2846	11226	783	129034	7673	50012	381	161	978	148	0	49996	726	49212	1265	49187	4806	50011	1337
<b>Prairies</b>	<b>505091</b>	<b>60825</b>	<b>237438</b>	<b>1094</b>	<b>7549</b>	<b>8646</b>	<b>17289</b>	<b>943</b>	<b>213664</b>	<b>11684</b>	<b>71134</b>	<b>590</b>	<b>326</b>	<b>1685</b>	<b>251</b>	<b>0</b>	<b>71110</b>	<b>1304</b>	<b>70770</b>	<b>2175</b>	<b>70312</b>	<b>7544</b>	<b>71565</b>	<b>2090</b>
British Columbia	248935	26709	145726	507	4356	310	9063	323	137640	8261	32337	389	214	1162	231	6	32305	1066	32305	1196	31275	4920	31330	1166
Yukon	5410	406	1000	2	136	0	139	9	998	60	N.C.	N.C.	N.C.	N.C.	N.C.	N.C.	N.C.	N.C.	N.C.	N.C.	N.C.	N.C.	N.C.	N.C.
Northwest Territories	1757	193	1594	10	147	1	158	5	1594	115	N.C.	N.C.	N.C.	N.C.	N.C.	N.C.	N.C.	N.C.	N.C.	N.C.	N.C.	1594	323	N.C.
Nunavut	5417	396	3208	7	230	3	240	233	3208	155	N.C.	N.C.	N.C.	N.C.	N.C.	N.C.	N.C.	N.C.	N.C.	N.C.	N.C.	N.C.	N.C.	N.C.
<b>Territories</b>	<b>12584</b>	<b>995</b>	<b>5802</b>	<b>19</b>	<b>513</b>	<b>4</b>	<b>537</b>	<b>247</b>	<b>5800</b>	<b>330</b>	<b>N.C.</b>	<b>N.C.</b>	<b>N.C.</b>	<b>N.C.</b>	<b>N.C.</b>	<b>N.C.</b>	<b>N.C.</b>	<b>N.C.</b>	<b>N.C.</b>	<b>N.C.</b>	<b>N.C.</b>	<b>1594</b>	<b>323</b>	<b>N.C.</b>
<b>CANADA</b>	<b>2779623</b>	<b>352182</b>	<b>1074153</b>	<b>2045</b>	<b>18963</b>	<b>43766</b>	<b>67020</b>	<b>5280</b>	<b>934499</b>	<b>46745</b>	<b>355713</b>	<b>1402</b>	<b>705</b>	<b>5728</b>	<b>794</b>	<b>3715</b>	<b>356384</b>	<b>8384</b>	<b>355793</b>	<b>9680</b>	<b>317699</b>	<b>28902</b>	<b>299145</b>	<b>9618</b>

The data in the RVDSS report represent surveillance data available at the time of writing. Data not collected by reporting lab denoted by N.C.

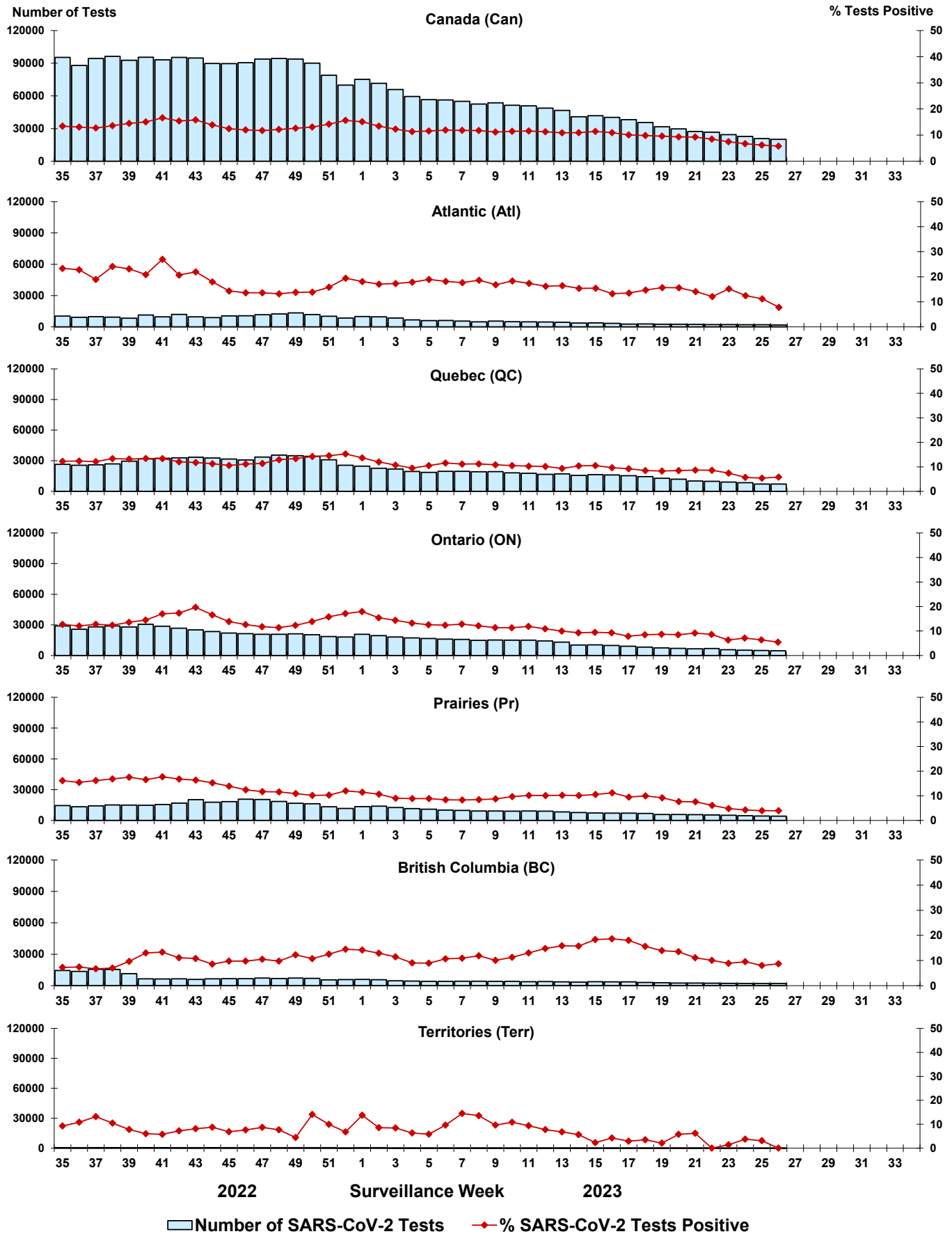
Some specimens from Yukon (YT) are sent to reference laboratories in British Columbia and reported results reflect specimens identified as originating from YT.

Results from British Columbia comprise of specimens from the following sites: Children's and Women's Hospital Laboratory, Fraser Health Medical Microbiology Laboratory, Island Health, Providence Health Care, Vancouver Coastal Health sites, Victoria General Hospital, BCCDC Public Health Laboratory, Interior Health Authority sites and Northern Health Authority sites.

Due to different testing protocols of laboratories across Canada, influenza A subtype detection counts may not be included in total influenza A detection counts. Total influenza A and B positive counts are used to calculate percentage of tests positive.

Delays in the reporting of data may cause data to change retrospectively. Due to these delays, the sum of weekly report totals do not add up to cumulative totals.

**Figure 3: Positive severe acute respiratory syndrome coronavirus 2 (SARS-CoV-2) tests (%) in Canada by region by surveillance week**



Note: Differences in positivity between jurisdictions can reflect differences in testing practices. Please interpret with caution.

Figure 4: Positive Influenza (Flu) tests (%) in Canada by region by surveillance week

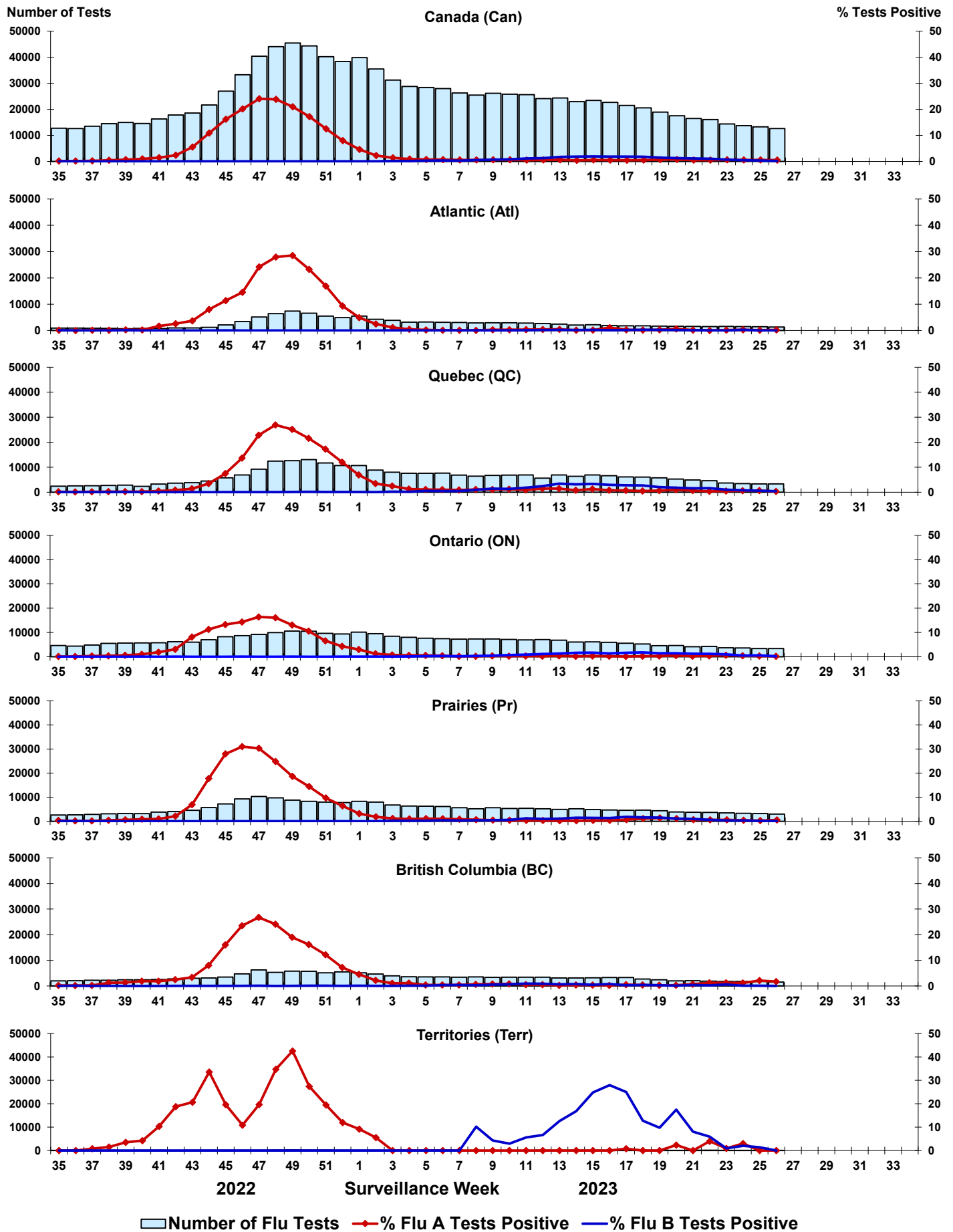


Figure 5: Positive Respiratory syncytial virus (RSV) tests (%) in Canada by region by surveillance week

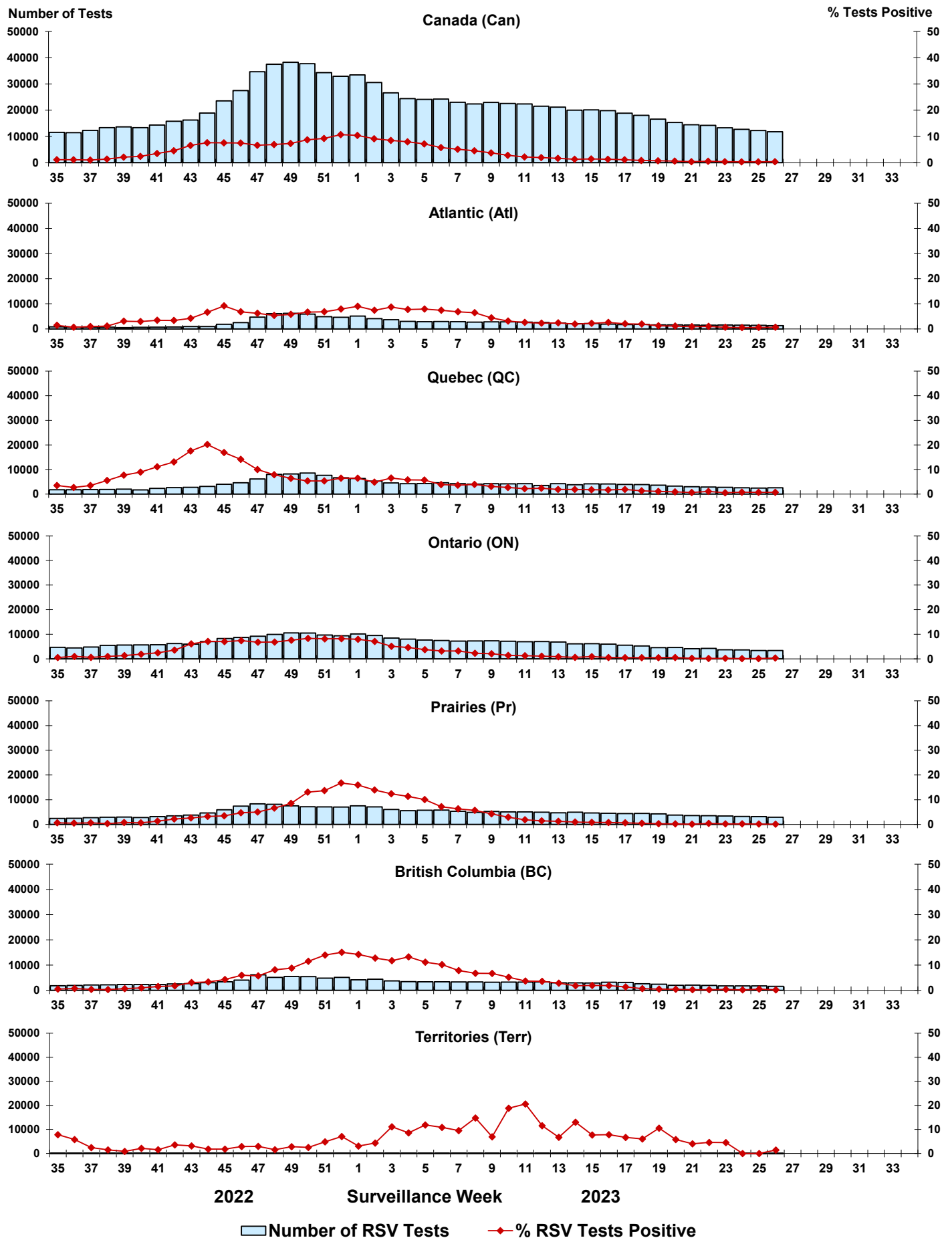




Figure 6: Positive Human parainfluenza virus (HPIV) tests (%) in Canada by region by surveillance week

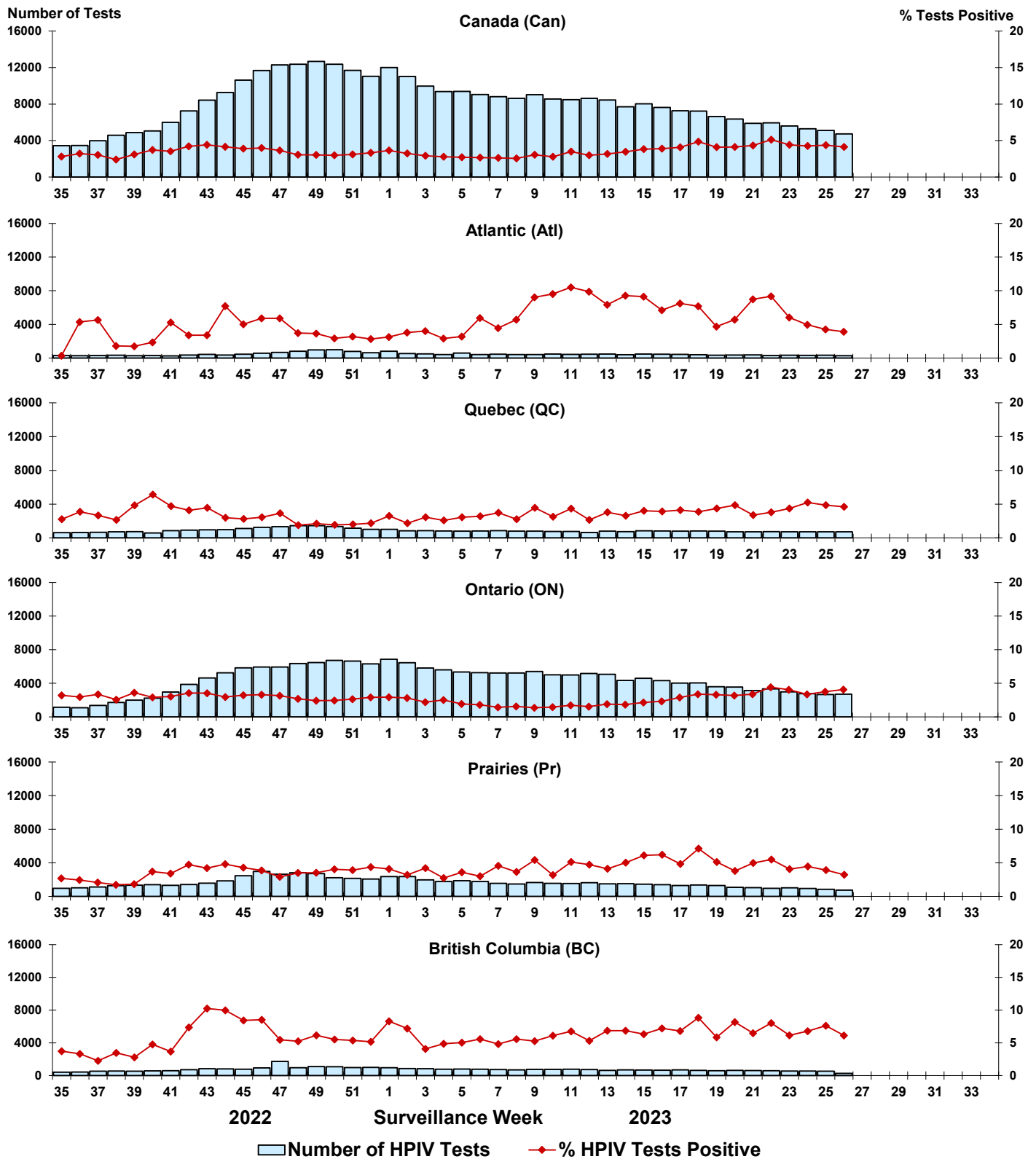


Figure 7: Positive Adenovirus (ADV) tests (%) in Canada by region by surveillance week

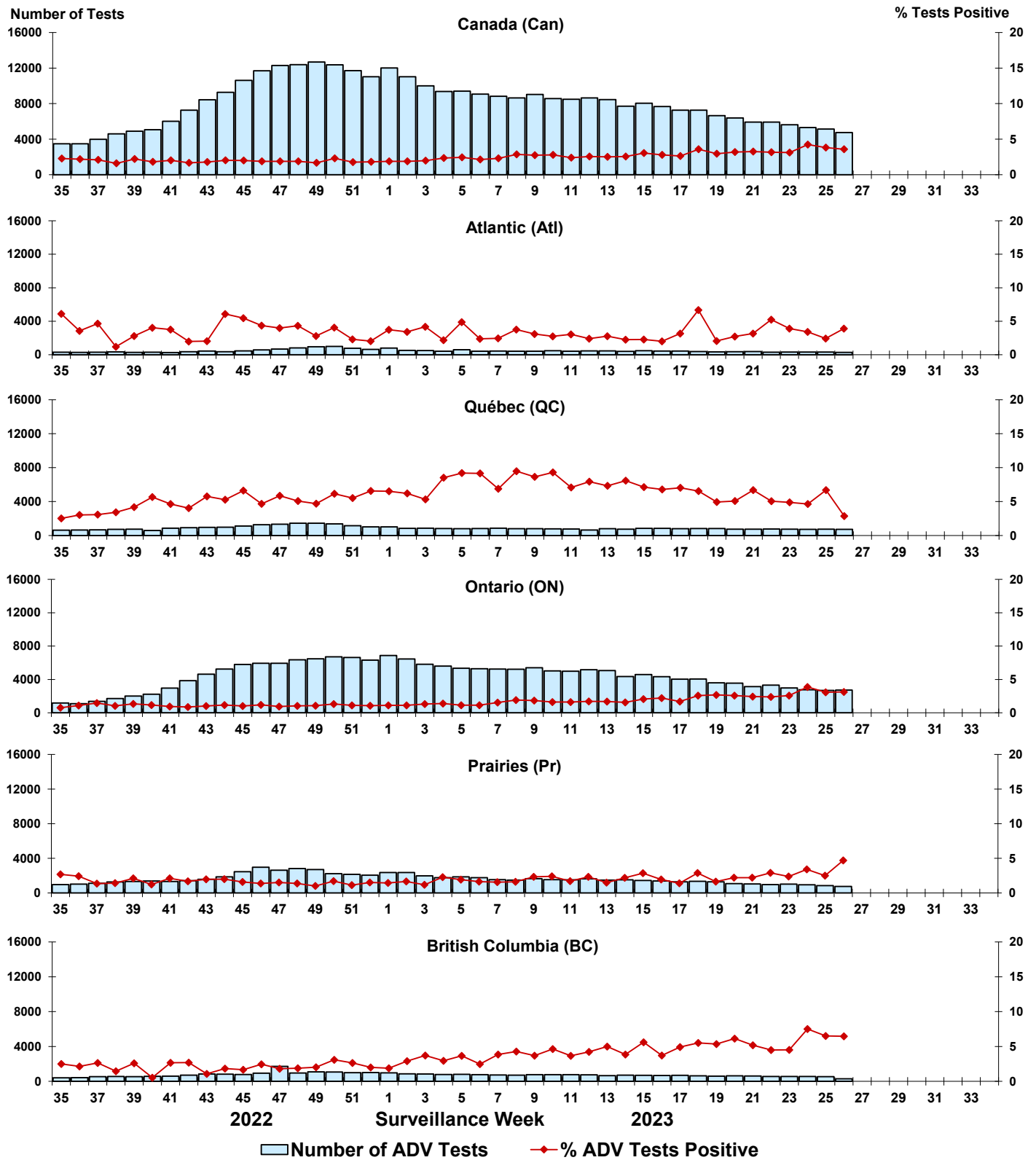


Figure 8: Positive Human metapneumovirus (HMPV) tests (%) in Canada by region by surveillance week

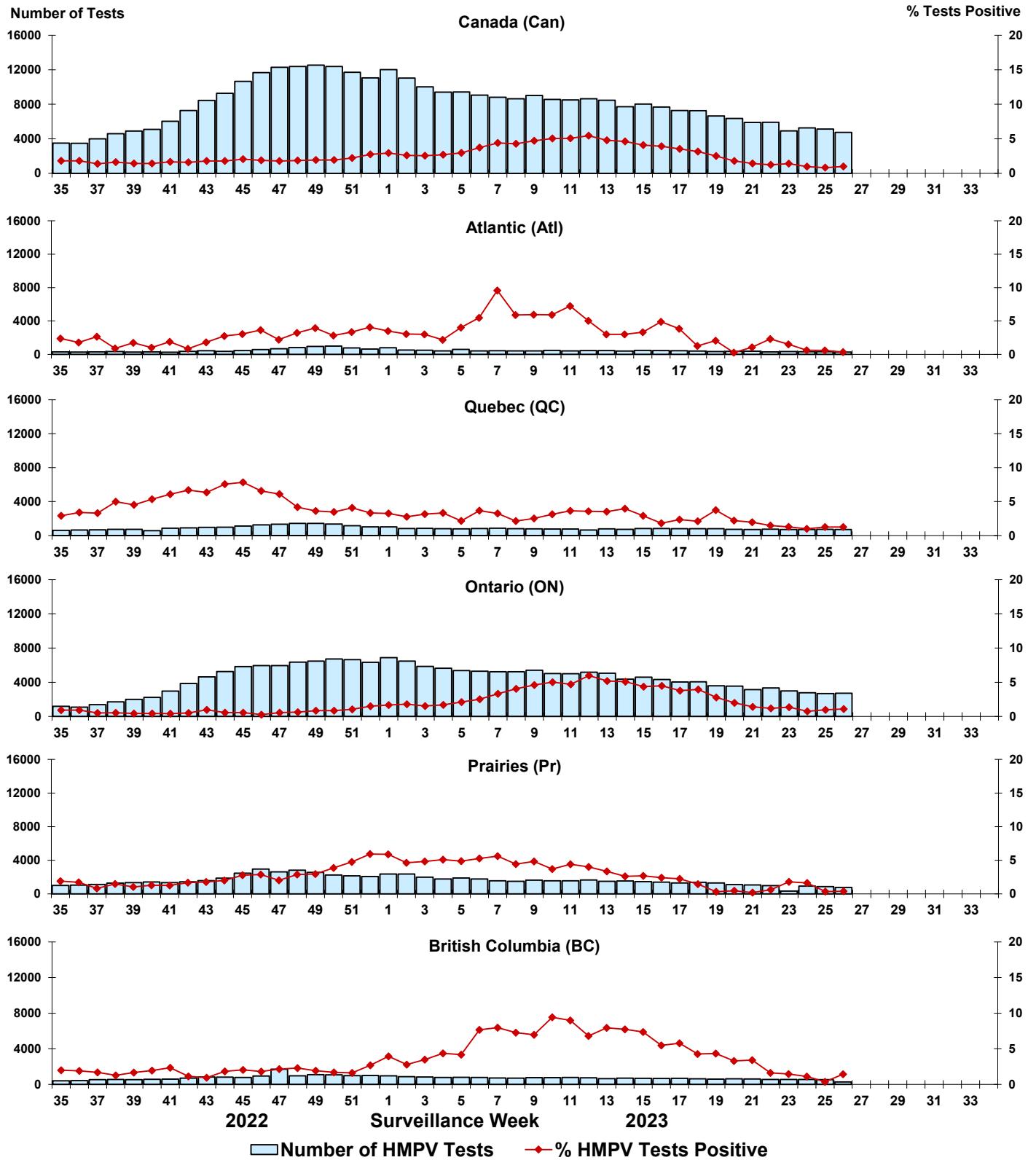


Figure 9: Positive Enterovirus/Rhinovirus (EV/RV) tests (%) in Canada by region by surveillance week

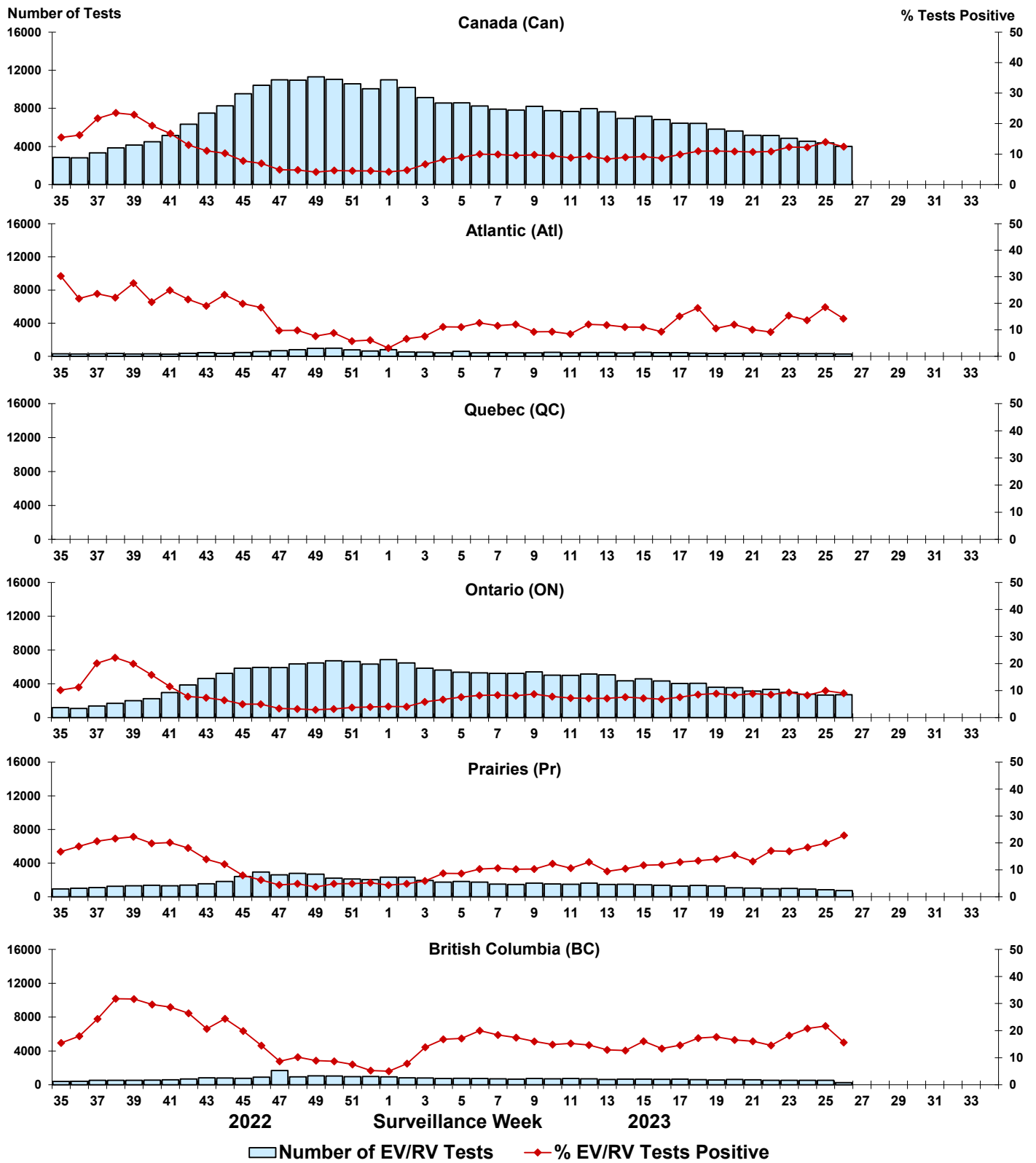


Figure 10: Positive Human coronavirus (HCoV) tests (%) in Canada by region by surveillance week

