

RESPIRATORY VIRUS DETECTION REPORT

September 11 to September 17, 2022
(Surveillance Week 2022-37)



In this Respiratory Virus Report, the number of detections of coronavirus reflects only seasonal human coronaviruses, not the novel pandemic coronavirus (SARS-CoV-2) that causes COVID-19. For information on COVID-19, see the [Coronavirus disease \(COVID-19\): Outbreak update](#).

Overall Summary

Respiratory virus detections are low in Canada, and activity of all viruses is near or below expected levels.

- Enterovirus/Rhinovirus remains the most common seasonal respiratory virus detected in Canada (671 detections; 21.8% positive). Activity is increasing, but remains below expected levels for this time of year.
- Detections of other respiratory viruses are low, but activity is near expected levels.
- 32/34 sentinel laboratories reported surveillance data.

Abbreviations

Flu: Influenza

Flu A(H1N1)pdm09: Influenza A(H1N1)pdm09

Flu A(H3): Influenza A(H3N2)

Flu A(UnS): Influenza A(Unsubtyped)

RSV: Respiratory syncytial virus

HPIV: Human parainfluenza virus

HMPV: Human metapneumovirus

ADV: Adenovirus

EV/RV: Enterovirus/Rhinovirus

HCoV: Human coronavirus

Atl: Atlantic Canada

BC: British Columbia

Can: Canada

EORLA: Eastern Ontario Regional Laboratory Association

HSC: Health Sciences Centre

N.C.: Data not collected

N.R.: Data not reported for current week

ON: Ontario

PR: Prairies

P.H.O.L.: Public Health Ontario Laboratory

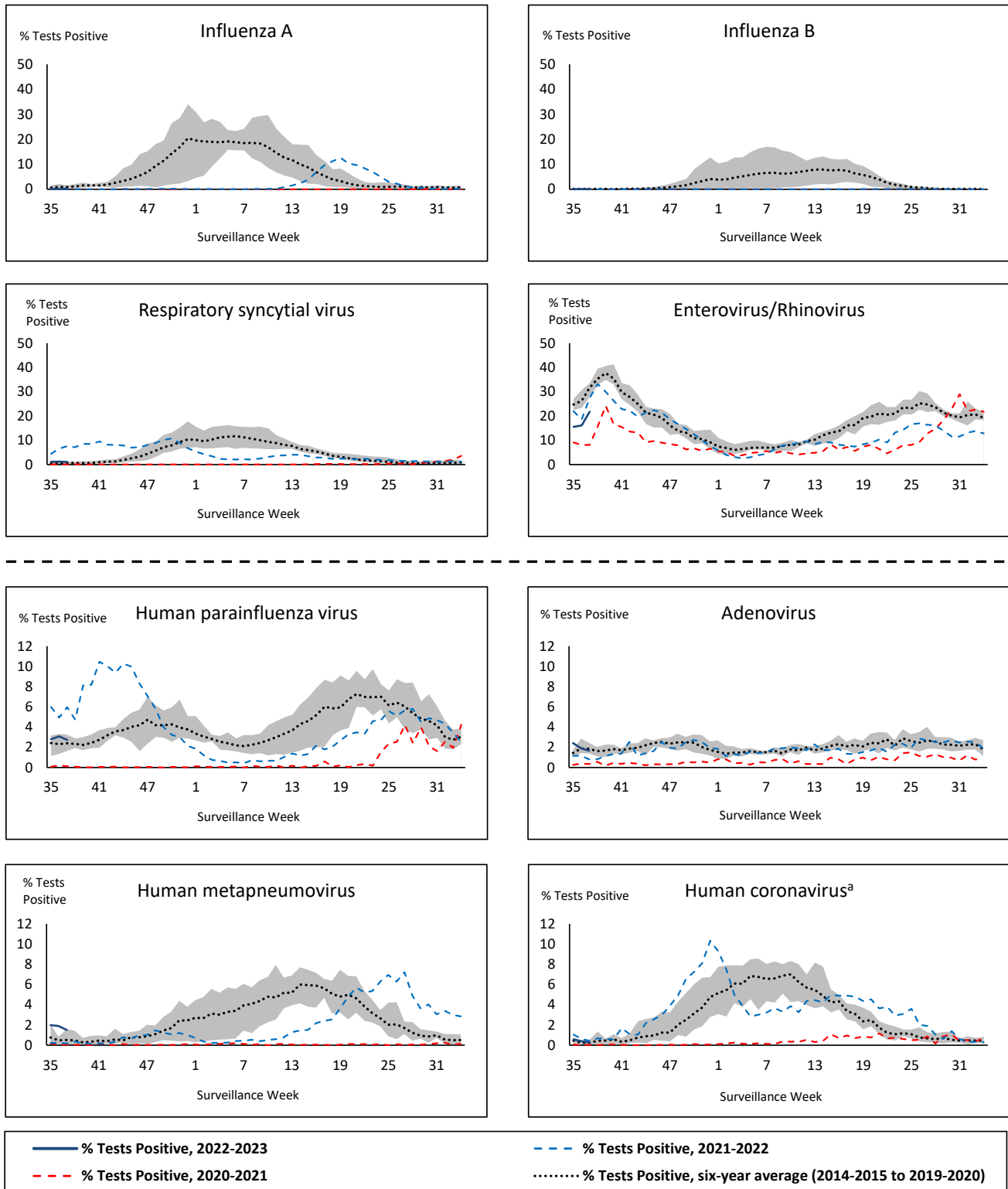
QC: Quebec

Terr: Territories of Canada

UHN: University Health Network



Figure 1: Positive respiratory virus tests (%) reported by participating laboratories in Canada by surveillance week compared to average and range from 2014-2015 to 2019-2020 season



Shaded area represents the maximum and minimum % of respiratory virus tests positive reported by week from seasons 2014-2015 to 2019-2020

Note: Data from week 11 of the 2019-2020 season onwards are excluded from the historical comparison due to the COVID-19 pandemic

Note: % Tests Positive scale changes across the dashed line

^a Human coronavirus excludes human coronaviruses SARS-CoV, MERS-CoV and SARS-CoV-2; Includes seasonal human coronaviruses HCoV-229E, HCoV-OC43, HCoV-NL63, HCoV-HKU1.

Table 1: Respiratory virus detections for the week ending September 17, 2022 (surveillance week 2022-37)

Reporting Laboratory	Flu Tested	A(H1)pdm09 Positive	A(H3) Positive	A(UnS) Positive	Total Flu A Positive	Total Flu B Positive	RSV Tested	RSV Positive	HPIV Tested	HPIV 1 Positive	HPIV 2 Positive	HPIV 3 Positive	HPIV 4 Positive	Other HPIV Positive	ADV Tested	ADV Positive	HMPV Tested	HMPV Positive	EV/RV Tested	EV/RV Positive	HCoV Tested	HCoV Positive
Newfoundland	156	0	0	0	0	0	156	4	156	0	0	1	0	0	156	0	156	8	156	13	156	0
Prince Edward Island	43	0	0	0	0	0	43	0	43	0	1	4	0	0	43	3	43	0	43	29	43	0
Nova Scotia	244	0	0	1	1	0	243	2	66	0	0	0	0	0	66	1	66	0	66	14	66	0
New Brunswick	N.R.	N.R.	N.R.	N.R.	N.R.	N.R.	N.R.	N.R.	N.R.	N.R.	N.R.	N.R.	N.R.	N.R.	N.R.	N.R.	N.R.	N.R.	N.R.	N.R.	N.R.	N.R.
Atlantic	443	0	0	1	1	0	442	6	265	0	1	5	0	0	265	4	265	8	265	56	265	0
Région Nord-Est	658	0	0	0	0	0	145	1	4	0	0	0	0	0	4	1	4	0	N.C.	N.C.	1	0
Québec-Chaudière-Appalaches	350	0	0	0	0	1	349	12	32	0	0	1	0	0	192	5	224	5	N.C.	N.C.	126	0
Centre-du-Québec	258	0	0	0	0	1	239	6	37	0	0	0	0	0	37	0	37	3	N.C.	N.C.	37	0
Montréal-Laval	811	0	0	2	2	0	728	19	356	5	0	5	0	0	356	7	356	17	N.C.	N.C.	386	0
Ouest du Québec	243	0	0	0	0	0	243	12	29	0	0	0	0	0	29	3	29	0	N.C.	N.C.	29	1
Montréal	356	0	0	2	2	0	139	10	0	0	0	0	0	0	0	0	0	0	N.C.	N.C.	0	0
Province of Québec	2676	0	0	4	4	2	1843	60	458	5	0	6	0	0	618	16	650	25	N.C.	N.C.	579	1
P.H.O.L. - Ottawa	32	0	0	0	0	0	32	0	32	0	0	0	0	1	32	0	32	0	32	1	32	0
EORLA	232	0	0	0	0	0	232	1	38	0	0	0	0	0	38	1	38	1	38	9	38	0
P.H.O.L. - Kingston	31	0	0	0	0	0	31	0	31	0	0	0	0	1	31	1	31	0	31	13	31	0
UHN / Mount Sinai Hospital	381	0	0	3	3	1	381	0	11	0	0	0	0	0	11	0	11	0	11	0	11	2
P.H.O.L. - Toronto	250	1	3	0	2	0	250	0	250	0	0	0	0	21	250	3	250	1	250	40	250	1
Sick Kids Hospital - Toronto	N.R.	N.R.	N.R.	N.R.	N.R.	N.R.	N.R.	N.R.	N.R.	N.R.	N.R.	N.R.	N.R.	N.R.	N.R.	N.R.	N.R.	N.R.	N.R.	N.R.	N.R.	N.R.
Shared Hospital Laboratory	2888	0	0	8	8	0	2888	10	23	0	0	0	0	0	24	1	23	0	23	4	0	0
P.H.O.L. - Sault Ste. Marie	3	0	0	0	0	0	3	0	3	0	0	0	0	0	3	0	3	0	3	0	3	0
P.H.O.L. - Timmins	15	0	0	0	0	0	15	0	15	0	0	0	0	0	15	0	15	0	15	7	15	0
St. Joseph's - London	48	0	0	0	0	0	48	2	48	0	0	0	0	1	48	1	48	0	48	10	5	0
P.H.O.L. - London	79	0	2	0	2	0	79	2	79	0	0	0	0	2	79	4	79	1	79	18	79	0
P.H.O.L. - Orillia	27	0	0	0	0	0	27	0	27	0	0	0	0	1	27	0	27	0	27	15	27	0
P.H.O.L. - Thunder Bay	10	0	0	0	0	0	10	0	10	0	0	0	0	0	10	0	10	0	10	8	10	0
P.H.O.L. - Sudbury	5	0	0	0	0	0	5	0	5	0	0	0	0	0	5	0	5	0	5	3	5	0
P.H.O.L. - Hamilton	62	0	0	0	0	0	62	1	62	0	0	0	0	4	62	2	62	0	62	17	62	0
P.H.O.L. - Peterborough	22	0	0	0	0	0	22	1	22	0	0	0	0	1	22	0	22	0	22	12	22	0
St. Joseph's - Hamilton	644	0	0	0	0	0	644	12	644	0	0	14	0	0	644	0	644	3	644	108	0	0
Province of Ontario	4729	1	5	11	15	1	4729	29	1300	0	0	14	0	32	1301	13	1300	6	1300	265	590	3
Manitoba	497	0	0	0	0	0	497	4	93	0	1	2	0	0	93	3	109	1	93	26	109	0
Saskatchewan	399	0	0	1	1	0	399	0	184	0	0	7	0	0	183	7	183	4	183	27	184	1
Alberta	1802	1	2	1	4	0	1626	12	787	1	0	10	1	0	787	5	787	3	781	166	787	3
Prairies	2698	1	2	2	5	0	2522	16	1064	1	1	19	1	0	1063	15	1079	8	1057	219	1080	4
British Columbia	1708	0	1	0	3	0	1588	7	425	0	0	8	3	0	425	13	425	9	417	107	417	0
Yukon	6	0	0	0	0	0	6	0	N.C.	N.C.	N.C.	N.C.	N.C.	N.C.	N.C.	N.C.	N.C.	N.C.	N.C.	N.C.	N.C.	N.C.
Northwest Territories	44	0	0	0	0	0	44	3	0	0	0	0	0	0	0	0	0	0	44	24	0	0
Nunavut	72	1	0	0	1	0	72	0	N.C.	N.C.	N.C.	N.C.	N.C.	N.C.	N.C.	N.C.	N.C.	N.C.	N.C.	N.C.	N.C.	N.C.
Territories	122	1	0	0	1	0	122	3	0	0	0	0	0	0	0	0	0	0	44	24	0	0
CANADA	12376	3	8	18	29	3	11246	121	3512	6	2	52	4	32	3672	61	3719	56	3083	671	2931	8

The data in the RVDSS report represent surveillance data available at the time of writing. Data missing from the current week are denoted by N.R. Data not collected by reporting lab denoted by N.C.

Specimens from Yukon (YT) are sent to reference laboratories in British Columbia and reported results reflect specimens identified as originating from YT.

Results from British Columbia comprise of specimens from the following sites: BC Children's and Women's Hospital, Children's and Women's Hospital Laboratory, Fraser Health Medical Microbiology Laboratory, Island Health, Providence Health Care, Powell River Hospital, St. Paul's Hospital, Vancouver General Hospital, Victoria General Hospital, BCCDC Public Health Laboratory, Interior Health Authority sites and Northern Health Authority sites.

Delays in the reporting of data may cause data to change retrospectively.

For British Columbia, only data from subtyped influenza A specimens are included in the weekly number of influenza detections. The sum of A(H1N1)pdm09, A(H3), and A(UnS) positive results may not equal the sum of total Flu A positive results.

Due to different testing protocols of laboratories across Canada, influenza A subtype detection counts may not be included in total influenza A detection counts, as some subtype detections are not available through routine testing but are subsequently reported if further subtype testing is conducted. In these instances, subtype counts do not reflect influenza A detections intended to be captured by routine surveillance, and are excluded from total detections and percent positivity.

Table 2: Cumulative respiratory virus detections from August 28, 2022 to September 17, 2022 (surveillance weeks 2022-35 to 2022-37)

Reporting Laboratory	Flu Tested	A(H1)pdm09 Positive	A(H3) Positive	A(UnS) Positive	Total Flu A Positive	Total Flu B Positive	RSV Tested	RSV Positive	HPIV Tested	HPIV 1 Positive	HPIV 2 Positive	HPIV 3 Positive	HPIV 4 Positive	Other HPIV Positive	ADV Tested	ADV Positive	HMPV Tested	HMPV Positive	EV/RV Tested	EV/RV Positive	HCoV Tested	HCoV Positive
Newfoundland	469	0	1	0	1	0	469	9	469	1	2	3	2	0	469	6	469	19	469	49	469	0
Prince Edward Island	121	0	0	0	0	0	121	1	121	0	1	6	0	0	121	8	121	0	121	82	121	1
Nova Scotia	932	0	0	1	1	0	931	6	121	0	0	1	1	0	121	5	121	0	121	33	121	0
New Brunswick	759	0	0	0	0	1	538	7	128	0	0	5	0	0	128	13	128	1	128	42	128	3
Atlantic	2281	0	1	1	2	1	2059	23	839	1	3	15	3	0	839	32	839	20	839	206	839	4
Région Nord-Est	1783	0	0	2	2	0	426	7	15	1	1	0	0	0	14	2	14	0	N.C.	N.C.	11	1
Québec-Chaudière-Appalaches	1030	0	0	2	2	1	951	21	89	0	0	3	0	0	673	11	663	14	N.C.	N.C.	355	3
Centre-du-Québec	724	0	0	1	1	2	643	13	75	0	0	0	0	0	75	0	75	4	N.C.	N.C.	75	0
Montréal-Laval	2221	0	0	3	3	1	2008	88	1039	11	1	15	0	0	1039	32	1039	52	N.C.	N.C.	1120	1
Ouest du Québec	744	0	0	2	2	0	744	32	54	0	0	1	0	0	63	6	54	1	N.C.	N.C.	54	1
Montréal	1189	0	0	2	2	0	972	20	0	0	0	0	0	0	0	0	0	0	N.C.	N.C.	0	0
Province of Québec	7691	0	0	12	12	4	5744	181	1272	12	2	19	0	0	1864	51	1845	71	N.C.	N.C.	1615	6
P.H.O.L. - Ottawa	68	0	0	0	0	0	68	0	68	0	0	0	0	1	68	0	68	2	68	2	68	0
EORLA	612	0	0	1	1	0	612	9	102	1	0	1	1	0	102	1	102	1	102	28	102	1
P.H.O.L. - Kingston	89	0	0	0	0	0	89	2	89	0	0	0	0	3	89	2	89	0	89	20	89	0
UHN / Mount Sinai Hospital	1139	0	0	3	3	1	1139	1	38	0	0	0	0	0	38	0	38	0	38	1	38	2
P.H.O.L. - Toronto	700	2	12	0	6	0	700	5	700	0	0	0	0	41	700	11	700	5	700	82	700	3
Sick Kids Hospital - Toronto	0	0	0	0	0	0	0	0	0	0	0	0	0	0	0	0	0	0	0	0	0	0
Shared Hospital Laboratory	8699	0	0	13	13	0	8699	32	75	1	0	3	0	0	78	2	77	0	77	6	0	0
P.H.O.L. - Sault Ste. Marie	14	0	0	0	0	0	14	0	14	0	0	0	0	0	14	0	14	0	14	0	14	0
P.H.O.L. - Timmins	29	0	0	0	0	0	29	0	29	0	0	0	0	0	29	0	29	0	29	9	29	0
St. Joseph's - London	136	0	0	0	0	0	136	3	102	0	0	0	0	2	136	1	136	0	136	19	11	0
P.H.O.L. - London	174	0	2	0	2	0	174	5	174	0	0	0	0	7	174	5	174	1	174	34	174	1
P.H.O.L. - Orillia	55	0	0	0	0	0	55	1	55	0	0	0	0	1	55	1	55	4	55	18	55	0
P.H.O.L. - Thunder Bay	22	0	0	0	0	0	22	0	22	0	0	0	0	1	22	0	22	0	22	11	22	0
P.H.O.L. - Sudbury	14	0	0	0	0	0	14	0	14	0	0	0	0	0	14	0	14	0	14	5	14	0
P.H.O.L. - Hamilton	168	0	0	0	0	0	168	3	168	0	0	0	0	7	168	3	168	0	168	32	168	0
P.H.O.L. - Peterborough	40	0	0	0	0	0	40	3	40	0	0	0	0	1	40	1	40	1	40	14	40	0
St. Joseph's - Hamilton	1758	0	0	2	2	1	1758	32	1758	0	0	44	0	0	1758	0	1758	13	1758	213	0	0
Province of Ontario	13717	2	14	19	27	2	13717	96	3448	2	0	48	1	64	3485	27	3484	27	3484	494	1524	7
Manitoba	1593	0	0	0	0	0	1593	10	338	0	2	5	0	0	338	14	405	14	338	108	405	0
Saskatchewan	1253	0	0	3	3	0	1252	4	538	0	2	16	5	0	539	17	541	21	539	47	538	3
Alberta	4990	3	6	5	14	3	4458	31	2180	5	3	33	2	0	2179	35	2180	10	2140	413	2180	10
Prairies	7836	3	6	8	17	3	7303	45	3056	5	7	54	7	0	3056	66	3126	45	3017	568	3123	13
British Columbia	5769	0	2	0	11	2	5298	30	1249	0	7	24	8	1	1249	32	1249	25	1228	243	1228	4
Yukon	24	0	0	0	0	0	24	0	N.C.	N.C.	N.C.	N.C.	N.C.	N.C.	N.C.	N.C.	N.C.	N.C.	N.C.	N.C.	N.C.	N.C.
Northwest Territories	93	0	0	0	0	0	93	6	0	0	0	0	0	0	0	0	0	0	93	44	0	0
Nunavut	206	1	0	0	1	0	206	11	N.C.	N.C.	N.C.	N.C.	N.C.	N.C.	N.C.	N.C.	N.C.	N.C.	N.C.	N.C.	N.C.	N.C.
Territories	323	1	0	0	1	0	323	17	0	0	0	0	0	0	0	0	0	0	93	44	0	0
CANADA	37617	6	23	40	70	12	34444	392	9864	20	19	160	19	65	10493	208	10543	188	8661	1555	8329	34

The data in the RVDSS report represent surveillance data available at the time of writing. Data not collected by reporting lab denoted by N.C.

Specimens from Yukon (YT) are sent to reference laboratories in British Columbia and reported results reflect specimens identified as originating from YT.

Results from British Columbia comprise of specimens from the following sites: BC Children's and Women's Hospital, Children's and Women's Hospital Laboratory, Fraser Health Medical Microbiology Laboratory, Island Health, Providence Health Care, Powell River Hospital, St. Paul's Hospital, Vancouver General Hospital, Victoria General Hospital, BCCDC Public Health Laboratory, Interior Health Authority sites and Northern Health Authority sites.

Delays in the reporting of data may cause data to change retrospectively. Due to these delays, the sum of weekly report totals do not add up to cumulative totals.

For British Columbia, only data from subtyped influenza A specimens are included in the weekly number of influenza detections. The sum of A(H1N1)pdm09, A(H3), and A(UnS) positive results may not equal the sum of total Flu A positive results.

Due to different testing protocols of laboratories across Canada, influenza A subtype detection counts may not be included in total influenza A detection counts, as some subtype detections are not available through routine testing but are subsequently reported if further subtype testing is conducted. In these instances, subtype counts do not reflect influenza A detections intended to be captured by routine surveillance, and are excluded from total detections and percent positivity.

Figure 2: Number of positive respiratory virus tests reported by participating laboratories in Canada by surveillance week

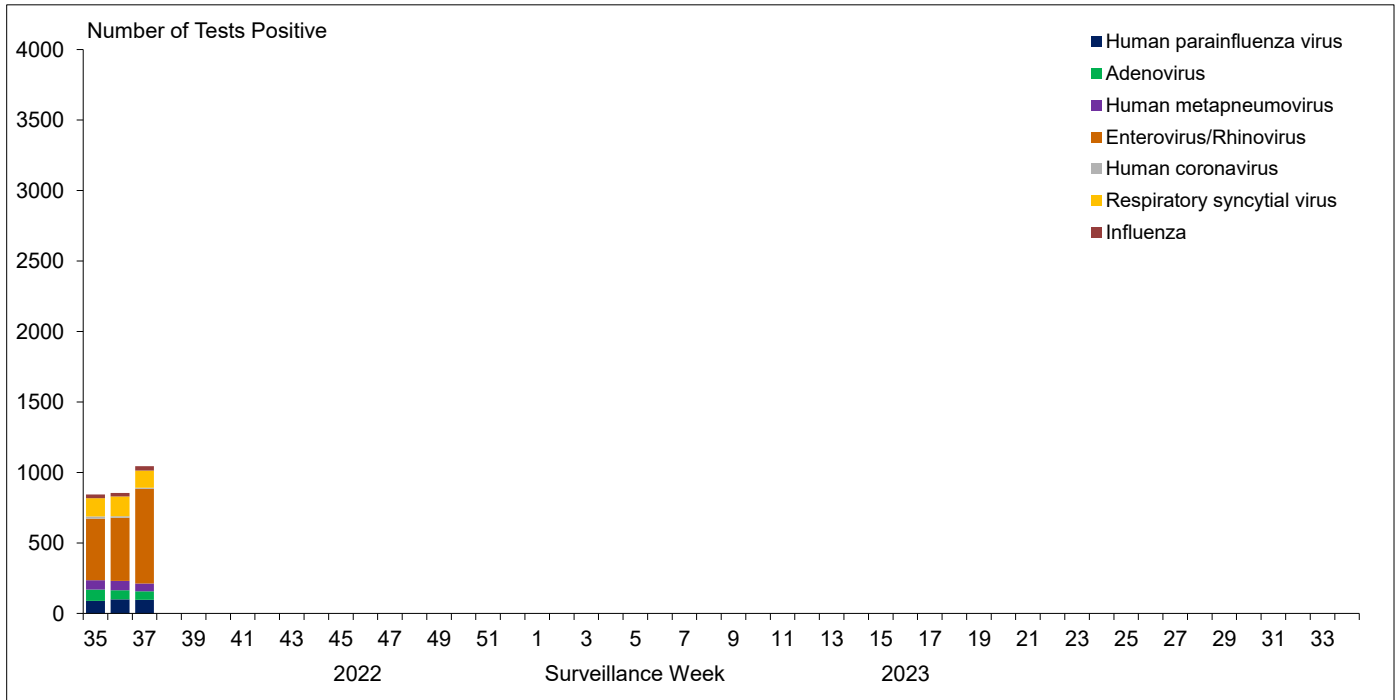


Figure 3: Positive Influenza (Flu) tests (%) in Canada by region by surveillance week

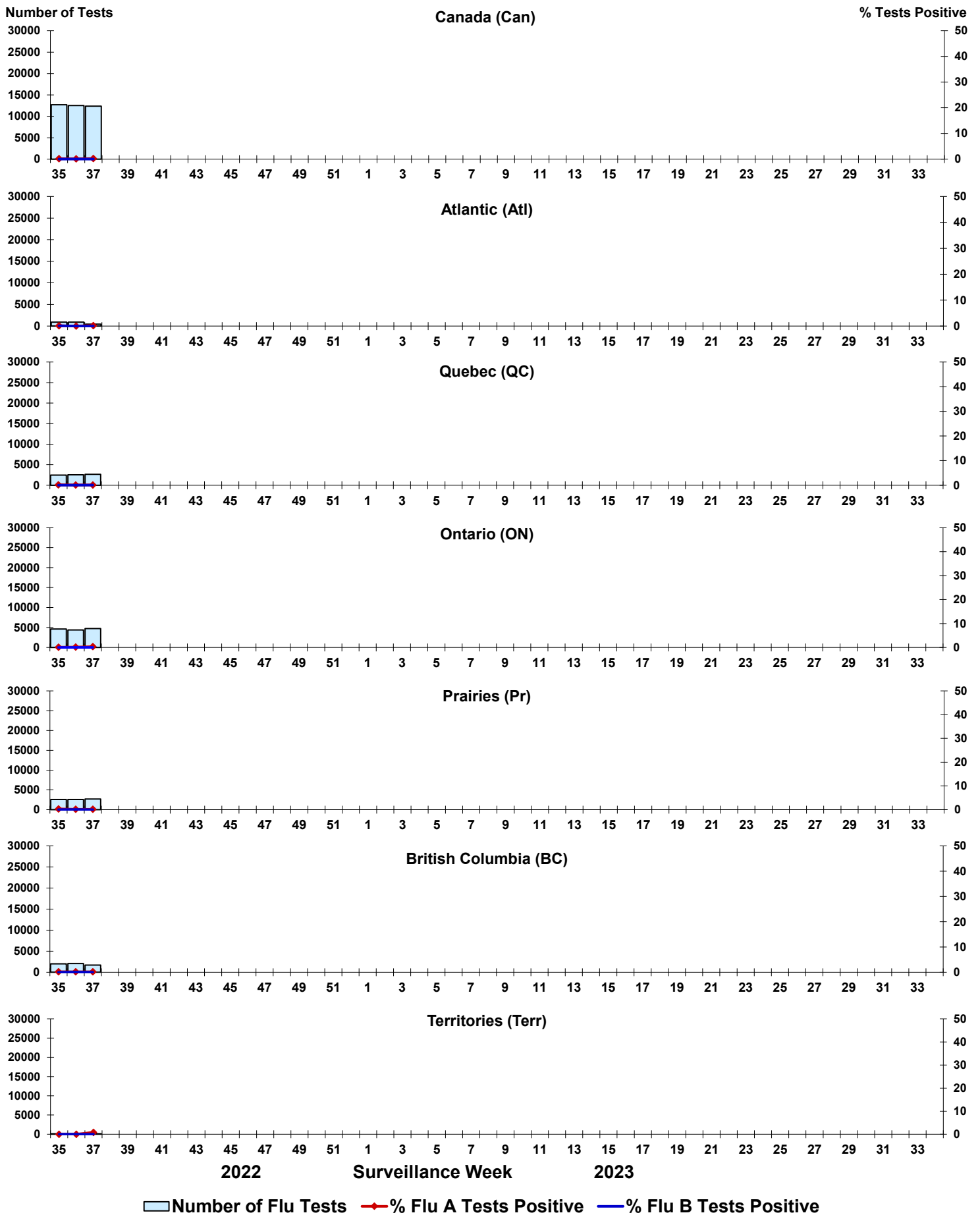


Figure 4: Positive Respiratory syncytial virus (RSV) tests (%) in Canada by region by surveillance week

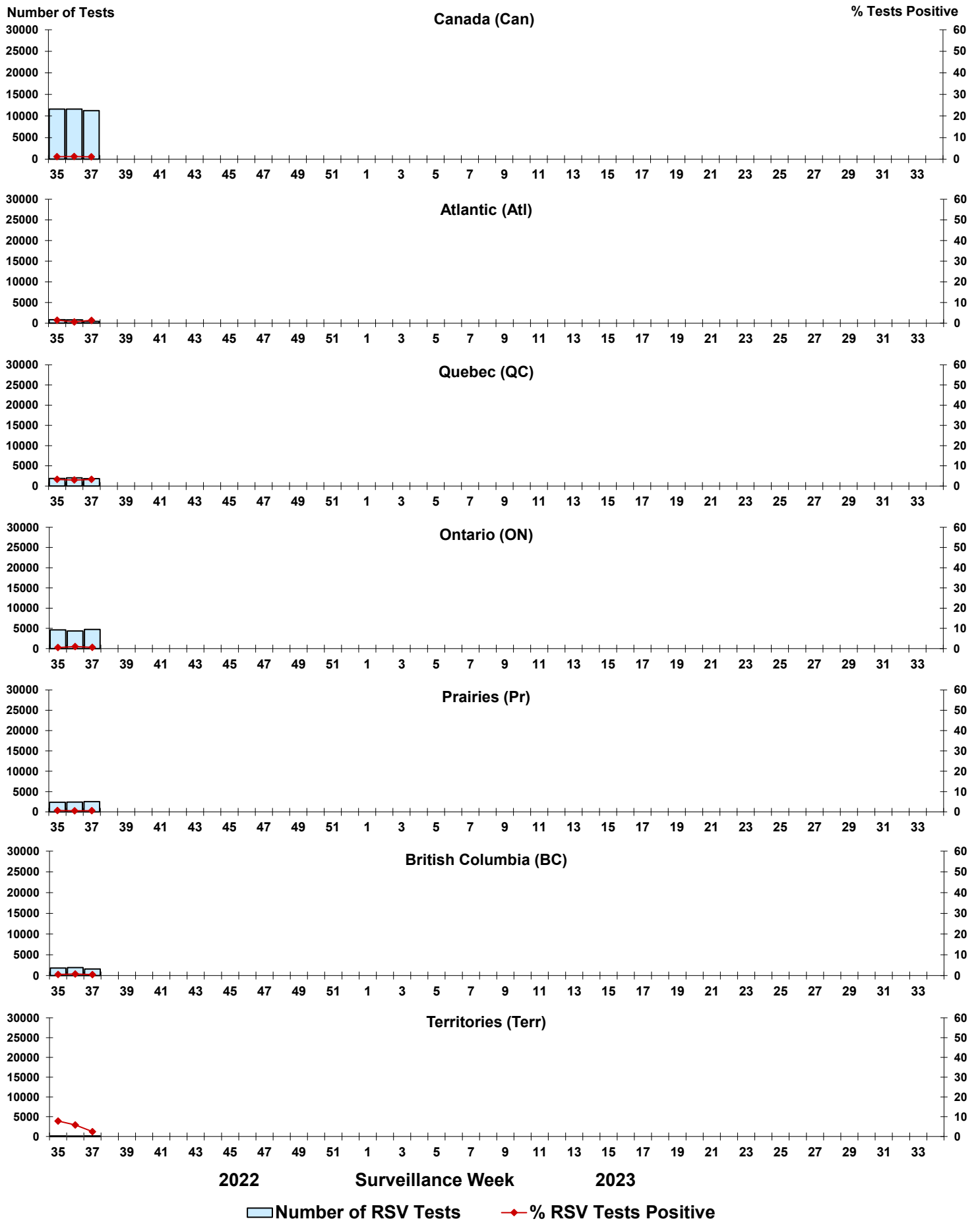


Figure 5: Positive Human parainfluenza virus (HPIV) tests (%) in Canada by region by surveillance week

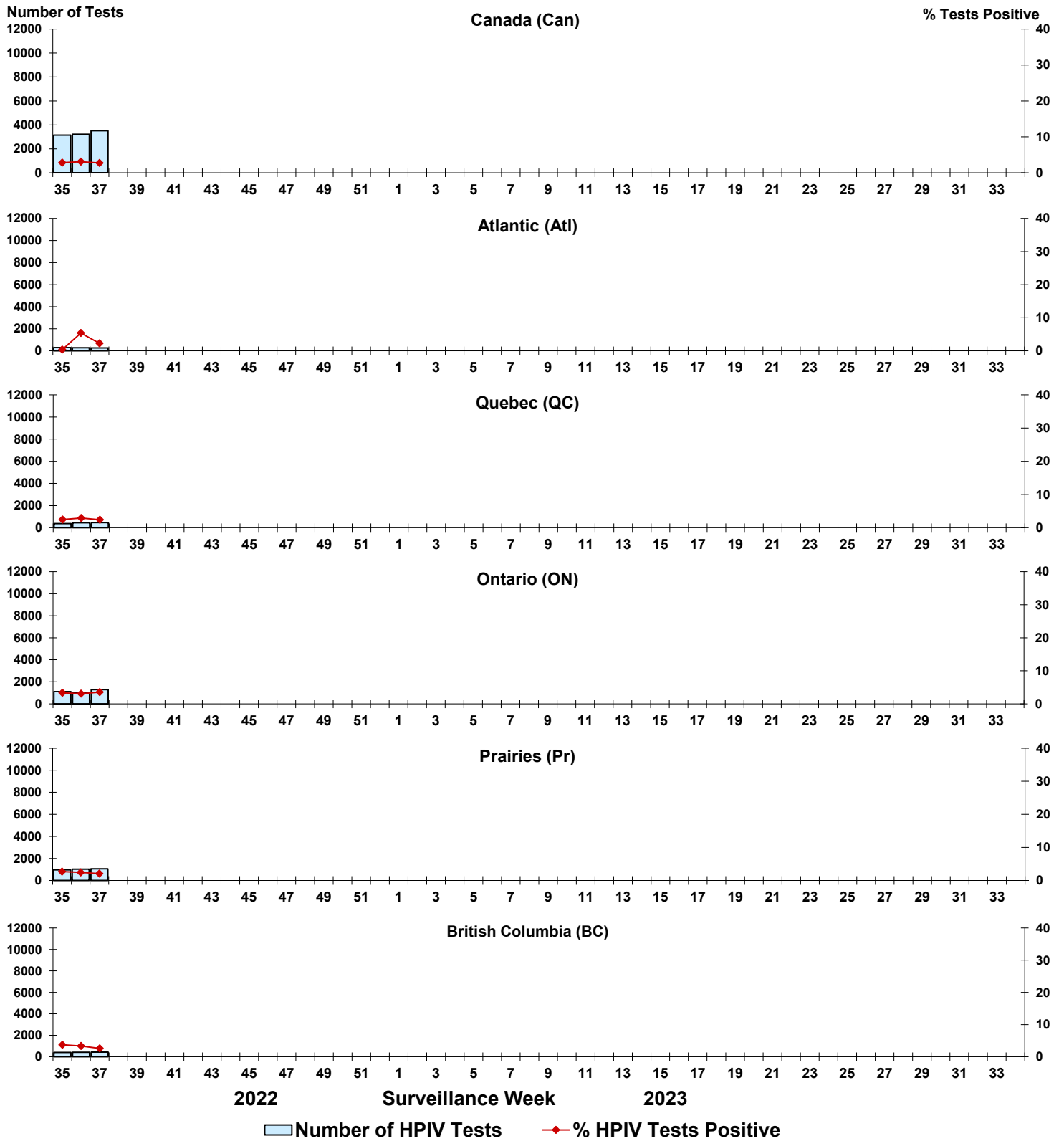


Figure 6: Positive Adenovirus (ADV) tests (%) in Canada by region by surveillance week

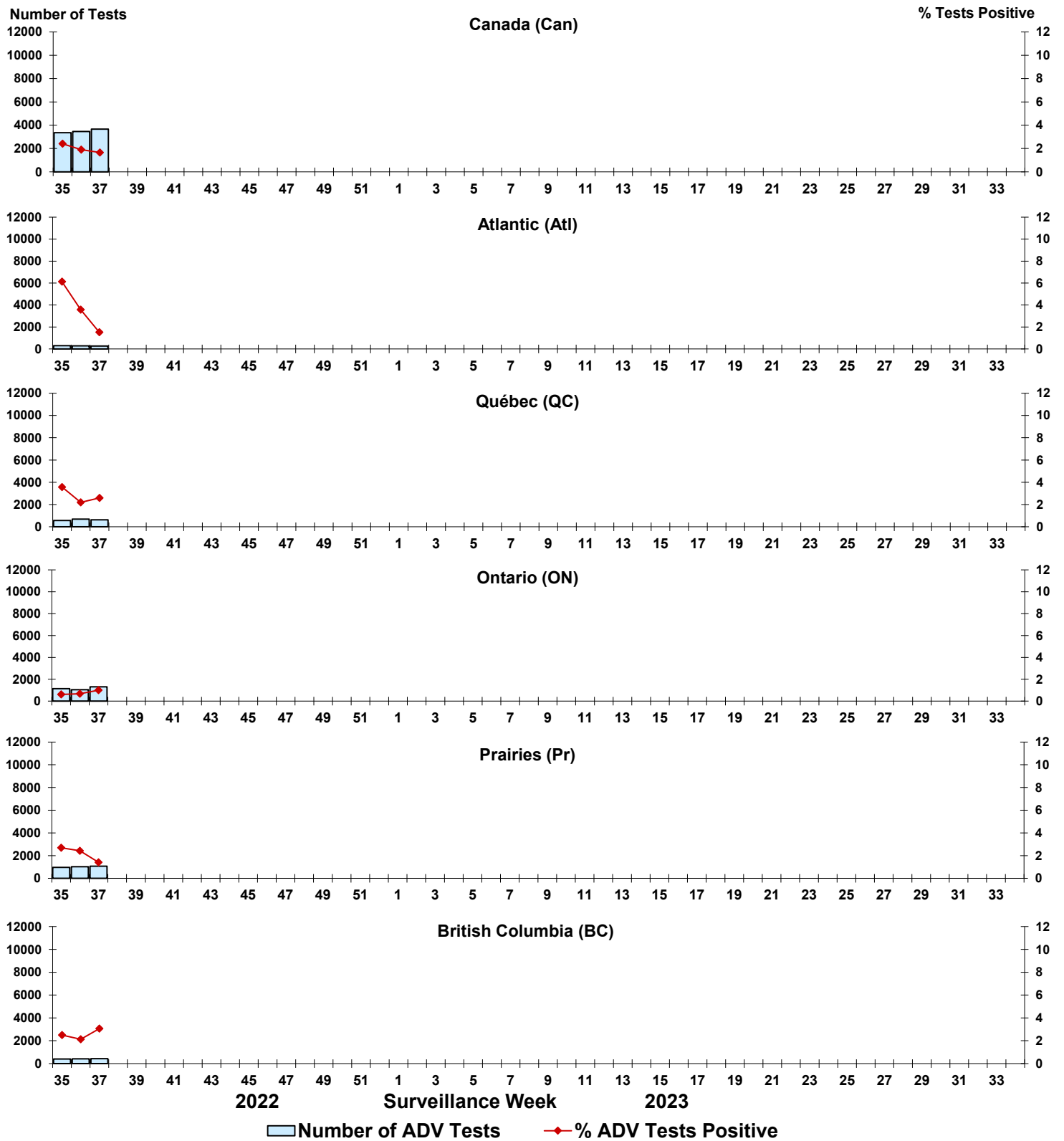


Figure 7: Positive Human metapneumovirus (HMPV) tests (%) in Canada by region by surveillance week

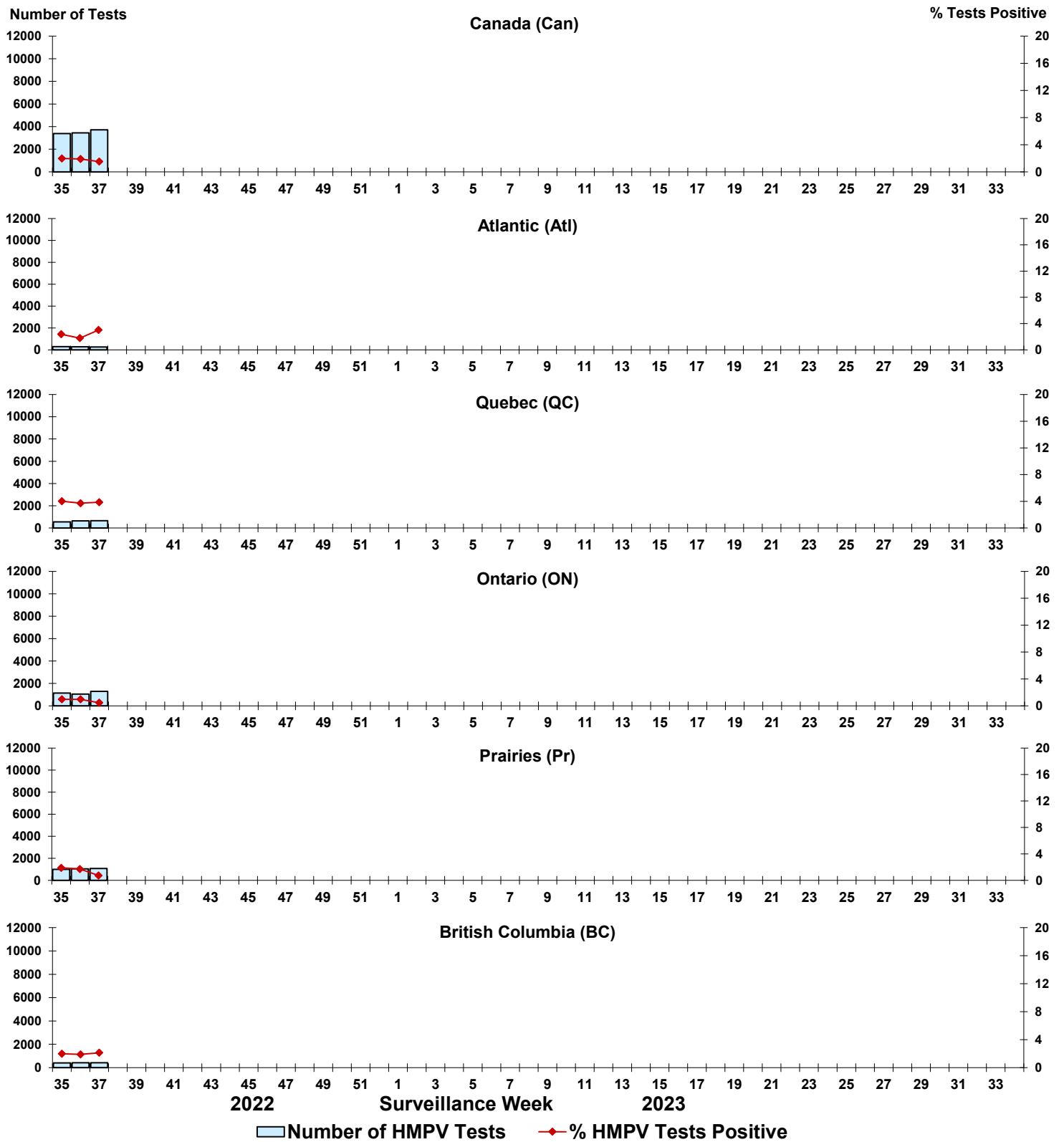


Figure 8: Positive Enterovirus/Rhinovirus (EV/RV) tests (%) in Canada by region by surveillance week

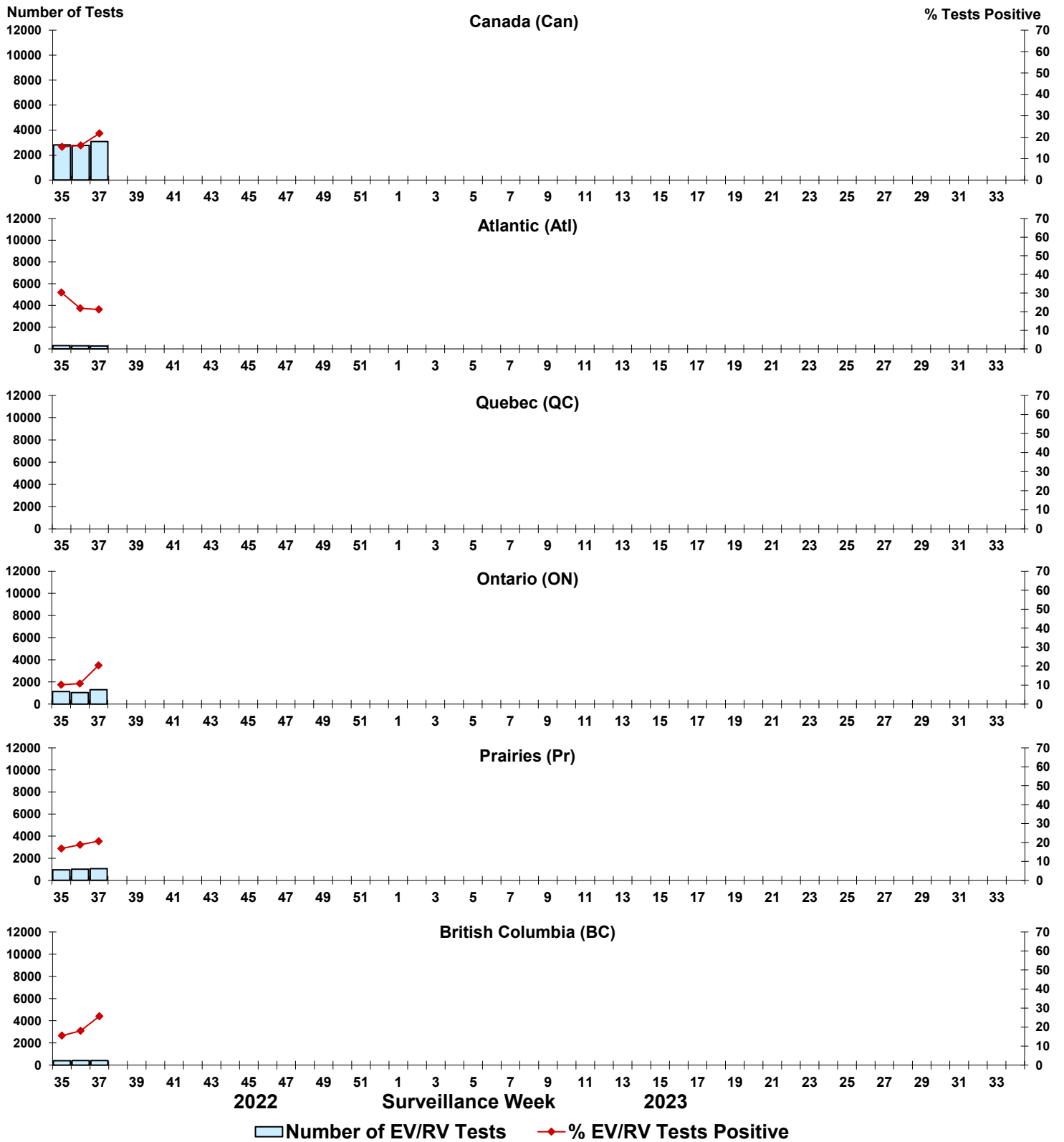


Figure 9: Positive Human coronavirus (HCoV) tests (%) in Canada by region by surveillance week

