

RESPIRATORY VIRUS DETECTION REPORT

October 2 to October 8, 2022
(Surveillance Week 2022-40)



In this Respiratory Virus Report, the number of detections of coronavirus reflects only seasonal human coronaviruses, not the novel pandemic coronavirus (SARS-CoV-2) that causes COVID-19. For information on COVID-19, see the [Coronavirus disease \(COVID-19\): Outbreak update](#).

Overall Summary

Respiratory virus detections remain low in Canada, but have increased in recent weeks. Activity of nearly all viruses is within expected levels.

- Enterovirus/Rhinovirus remains the most common seasonal respiratory virus detected in Canada (796 detections; 16.7% positive). Activity continues to decrease and remains far below expected levels for this time of year.
- Detections of other respiratory viruses are low, but activity is near expected levels.
 - Detections of respiratory syncytial virus have increased in recent weeks (339 detections; 2.5% positive), but activity remains low.
- 31/34 sentinel laboratories reported surveillance data.

Abbreviations

Flu: Influenza

Flu A(H1N1)pdm09: Influenza A(H1N1)pdm09

Flu A(H3): Influenza A(H3N2)

Flu A(UnS): Influenza A(Unsubtyped)

RSV: Respiratory syncytial virus

HPIV: Human parainfluenza virus

HMPV: Human metapneumovirus

ADV: Adenovirus

EV/RV: Enterovirus/Rhinovirus

HCoV: Human coronavirus

Atl: Atlantic Canada

BC: British Columbia

Can: Canada

EORLA: Eastern Ontario Regional Laboratory Association

HSC: Health Sciences Centre

N.C.: Data not collected

N.R.: Data not reported for current week

ON: Ontario

PR: Prairies

P.H.O.L.: Public Health Ontario Laboratory

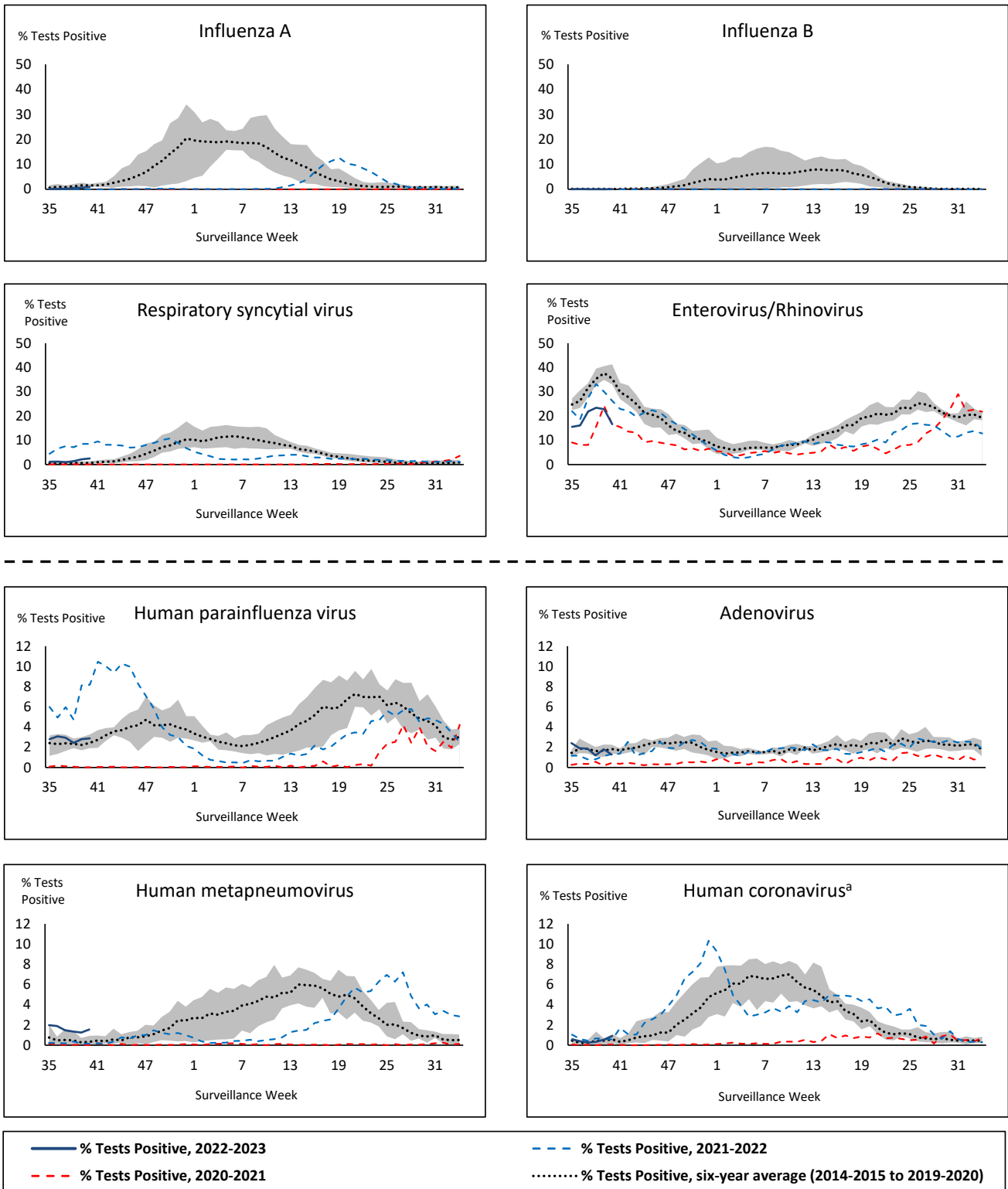
QC: Quebec

Terr: Territories of Canada

UHN: University Health Network



Figure 1: Positive respiratory virus tests (%) reported by participating laboratories in Canada by surveillance week compared to average and range from 2014-2015 to 2019-2020 season



Shaded area represents the maximum and minimum % of respiratory virus tests positive reported by week from seasons 2014-2015 to 2019-2020

Note: Data from week 11 of the 2019-2020 season onwards are excluded from the historical comparison due to the COVID-19 pandemic

Note: % Tests Positive scale changes across the dashed line

^a Human coronavirus excludes human coronaviruses SARS-CoV, MERS-CoV and SARS-CoV-2; Includes seasonal human coronaviruses HCoV-229E, HCoV-OC43, HCoV-NL63, HCoV-HKU1.

Table 1: Respiratory virus detections for the week ending October 8, 2022 (surveillance week 2022-40)

Reporting Laboratory	Flu Tested	A(H1)pdm09 Positive	A(H3) Positive	A(UnS) Positive	Total Flu A Positive	Total Flu B Positive	RSV Tested	RSV Positive	HPIV Tested	HPIV 1 Positive	HPIV 2 Positive	HPIV 3 Positive	HPIV 4 Positive	Other HPIV Positive	ADV Tested	ADV Positive	HMPV Tested	HMPV Positive	EV/RV Tested	EV/RV Positive	HCoV Tested	HCoV Positive
Newfoundland	172	0	0	0	0	0	172	5	172	0	0	1	0	0	172	3	172	3	172	27	172	0
Prince Edward Island	37	0	0	0	0	0	37	2	37	0	0	2	0	0	37	6	37	0	37	13	37	0
Nova Scotia	188	0	0	0	0	0	188	11	47	0	1	0	0	0	47	1	47	0	47	12	47	0
New Brunswick	421	0	1	1	2	0	280	2	42	0	0	3	0	0	42	2	42	0	42	9	42	3
Atlantic	818	0	1	1	2	0	677	20	298	0	1	6	0	0	298	12	298	3	298	61	298	3
Région Nord-Est	614	0	0	0	0	1	144	4	8	0	0	0	0	0	8	0	8	0	N.C.	N.C.	2	0
Québec-Chaudière-Appalaches	505	0	0	1	1	0	505	22	32	1	0	0	0	0	302	4	300	10	N.C.	N.C.	165	0
Centre-du-Québec	363	0	0	1	1	0	316	27	149	1	0	1	0	0	149	3	149	4	N.C.	N.C.	149	1
Montréal-Laval	1021	0	0	3	3	1	968	71	446	3	0	4	0	0	446	19	446	24	N.C.	N.C.	476	1
Ouest du Québec	255	0	0	1	1	0	255	36	19	1	0	0	1	0	19	1	19	2	N.C.	N.C.	19	1
Montréal	391	0	0	1	1	0	391	35	0	0	0	0	0	0	0	0	0	0	N.C.	N.C.	0	0
Province of Québec	3149	0	0	7	7	2	2579	195	654	6	0	5	1	0	924	27	922	40	N.C.	N.C.	811	3
P.H.O.L. - Ottawa	60	0	0	0	0	0	60	0	60	0	0	0	0	0	60	0	60	1	60	5	60	0
EOURLA	N.R.	N.R.	N.R.	N.R.	N.R.	N.R.	N.R.	N.R.	N.R.	N.R.	N.R.	N.R.	N.R.	N.R.	N.R.	N.R.	N.R.	N.R.	N.R.	N.R.	N.R.	N.R.
P.H.O.L. - Kingston	50	0	0	0	0	0	50	3	50	0	0	0	0	2	50	2	50	1	50	7	50	0
UHN / Mount Sinai Hospital	554	0	0	4	4	0	554	3	29	0	0	0	0	0	29	1	29	0	29	0	29	3
P.H.O.L. - Toronto	328	1	14	0	4	0	328	8	328	0	0	0	0	11	328	3	328	2	328	51	328	3
Sick Kids Hospital - Toronto	N.R.	N.R.	N.R.	N.R.	N.R.	N.R.	N.R.	N.R.	N.R.	N.R.	N.R.	N.R.	N.R.	N.R.	N.R.	N.R.	N.R.	N.R.	N.R.	N.R.	N.R.	N.R.
Shared Hospital Laboratory	2944	0	0	28	28	0	2944	40	294	0	0	5	0	2	299	2	301	0	301	23	281	0
P.H.O.L. - Sault Ste. Marie	9	0	0	0	0	0	9	0	9	0	0	0	0	0	9	0	9	0	9	5	9	0
P.H.O.L. - Timmins	8	0	0	0	0	0	8	0	8	0	0	0	0	0	8	0	8	0	8	3	8	0
St. Joseph's - London	N.R.	N.R.	N.R.	N.R.	N.R.	N.R.	N.R.	N.R.	N.R.	N.R.	N.R.	N.R.	N.R.	N.R.	N.R.	N.R.	N.R.	N.R.	N.R.	N.R.	N.R.	N.R.
P.H.O.L. - London	145	1	1	0	2	0	145	0	145	0	0	0	0	6	145	2	145	0	145	30	145	0
P.H.O.L. - Orillia	64	0	0	0	0	0	64	0	64	0	0	0	0	4	64	1	64	0	64	8	64	0
P.H.O.L. - Thunder Bay	6	0	0	0	0	0	6	0	6	0	0	0	0	0	6	1	6	0	6	3	6	0
P.H.O.L. - Sudbury	6	0	0	0	0	0	6	0	6	0	0	0	0	1	6	1	6	0	6	1	6	0
P.H.O.L. - Hamilton	103	0	1	0	1	2	103	5	103	0	0	0	0	0	103	0	103	1	103	16	103	1
P.H.O.L. - Peterborough	36	0	0	0	0	0	36	1	36	0	0	0	0	3	36	1	36	0	36	13	36	0
St. Joseph's - Hamilton	901	0	0	17	17	1	901	27	901	0	0	27	0	0	901	0	901	3	901	148	0	0
Province of Ontario	5214	2	16	49	56	3	5214	87	2039	0	0	32	0	29	2044	14	2046	8	2046	313	1125	7
Manitoba	342	0	0	0	0	0	342	3	722	0	0	1	0	0	722	5	128	2	722	24	128	1
Saskatchewan	483	0	0	0	0	0	394	0	225	1	2	11	0	0	225	3	225	7	225	57	225	1
Alberta	2122	4	21	2	27	1	1856	8	994	5	7	20	2	0	994	9	994	8	975	172	994	15
Prairies	2947	4	21	2	27	1	2592	11	1941	6	9	32	2	0	1941	17	1347	17	1922	253	1347	17
British Columbia	2428	2	12	1	45	0	2317	23	488	2	10	11	3	1	488	3	488	11	467	150	467	7
Yukon	4	0	0	0	0	0	4	0	N.C.	N.C.	N.C.	N.C.	N.C.	N.C.	N.C.	N.C.	N.C.	N.C.	N.C.	N.C.	N.C.	N.C.
Northwest Territories	44	0	0	0	0	0	44	1	0	0	0	0	0	0	0	0	0	0	44	19	0	0
Nunavut	93	0	6	0	6	0	93	2	N.C.	N.C.	N.C.	N.C.	N.C.	N.C.	N.C.	N.C.	N.C.	N.C.	N.C.	N.C.	N.C.	N.C.
Territories	141	0	6	0	6	0	141	3	0	0	0	0	0	0	0	0	0	0	44	19	0	0
CANADA	14697	8	56	60	143	6	13520	339	5420	14	20	86	6	30	5695	73	5101	79	4777	796	4048	37

The data in the RVDSS report represent surveillance data available at the time of writing. Data missing from the current week are denoted by N.R. Data not collected by reporting lab denoted by N.C.

Specimens from Yukon (YT) are sent to reference laboratories in British Columbia and reported results reflect specimens identified as originating from YT.

Results from British Columbia comprise of specimens from the following sites: Children's and Women's Hospital Laboratory, Fraser Health Medical Microbiology Laboratory, Island Health, Providence Health Care, Vancouver Coastal Health sites, Victoria General Hospital, BCCDC Public Health Laboratory, Interior Health Authority sites and Northern Health Authority sites.

Due to different testing protocols of laboratories across Canada, influenza A subtype detection counts may not be included in total influenza A detection counts. Total influenza A and B positive counts are used to calculate percentage of tests positive.

Delays in the reporting of data may cause data to change retrospectively.

Table 2: Cumulative respiratory virus detections from August 28, 2022 to October 8, 2022 (surveillance weeks 2022-35 to 2022-40)

Reporting Laboratory	Flu Tested	A(H1)pdm09 Positive	A(H3) Positive	A(UnS) Positive	Total Flu A Positive	Total Flu B Positive	RSV Tested	RSV Positive	HPIV Tested	HPIV 1 Positive	HPIV 2 Positive	HPIV 3 Positive	HPIV 4 Positive	Other HPIV Positive	ADV Tested	ADV Positive	HMPV Tested	HMPV Positive	EV/RV Tested	EV/RV Positive	HCoV Tested	HCoV Positive
Newfoundland	1013	0	1	0	1	0	1013	27	1013	2	2	7	3	0	1013	12	1013	29	1013	141	1013	0
Prince Edward Island	230	0	0	0	0	0	230	5	230	0	2	11	0	0	230	17	230	1	230	132	230	1
Nova Scotia	1501	0	0	4	4	1	1500	24	254	0	1	1	1	0	254	9	254	0	254	66	254	0
New Brunswick	2242	0	1	1	2	1	1535	13	296	0	2	18	1	0	296	28	296	1	296	96	296	7
Atlantic	4986	0	2	5	7	2	4278	69	1793	2	7	37	5	0	1793	66	1793	31	1793	435	1793	8
Région Nord-Est	3615	0	0	2	2	1	838	19	33	1	1	0	0	0	32	2	32	0	N.C.	N.C.	23	1
Québec-Chaudière-Appalaches	2366	0	0	4	4	1	2289	91	193	3	2	6	1	0	1486	23	1474	35	N.C.	N.C.	811	5
Centre-du-Québec	1542	0	0	2	2	2	1384	70	456	4	0	2	0	0	456	8	456	13	N.C.	N.C.	456	1
Montréal-Laval	4913	0	0	12	12	4	4632	251	2272	23	5	22	1	0	2272	70	2272	109	N.C.	N.C.	2238	6
Ouest du Québec	1486	0	0	4	4	0	1410	95	102	2	0	2	1	0	111	11	102	3	N.C.	N.C.	102	3
Montréal	2338	0	0	4	4	1	2121	114	0	0	0	0	0	0	0	0	0	0	N.C.	N.C.	0	0
Province of Québec	16260	0	0	28	28	9	12674	640	3056	33	8	32	3	0	4357	114	4336	160	N.C.	N.C.	3630	16
P.H.O.L. - Ottawa	210	0	0	0	0	0	210	1	210	0	0	0	0	1	210	0	210	3	210	17	210	0
EORLA	1149	0	0	5	5	0	1149	30	198	3	0	3	1	0	198	5	198	4	198	74	198	1
P.H.O.L. - Kingston	240	0	0	0	0	0	240	9	240	0	0	0	0	6	240	6	240	1	240	52	240	0
UHN / Mount Sinai Hospital	2511	0	0	12	12	1	2511	10	81	0	0	0	0	0	81	1	81	0	81	1	81	5
P.H.O.L. - Toronto	1688	13	58	1	16	0	1687	19	1687	0	0	0	0	80	1688	24	1685	12	1687	269	1685	8
Sick Kids Hospital - Toronto	0	0	0	0	0	0	0	0	0	0	0	0	0	0	0	0	0	0	0	0	0	0
Shared Hospital Laboratory	17573	0	0	74	74	0	17573	113	824	3	0	11	0	5	833	7	834	0	807	61	706	1
P.H.O.L. - Sault Ste. Marie	34	0	0	0	0	0	34	0	34	0	0	0	0	0	34	0	34	0	34	6	34	0
P.H.O.L. - Timmins	56	0	0	0	0	0	56	0	56	0	0	0	0	0	56	0	56	0	56	18	56	1
St. Joseph's - London	265	0	0	0	0	0	265	5	231	0	0	0	0	5	265	2	265	0	265	61	21	0
P.H.O.L. - London	538	1	5	0	6	0	538	10	538	0	0	0	0	19	538	11	538	2	538	119	538	2
P.H.O.L. - Orillia	170	0	1	1	2	0	170	3	170	0	0	0	0	10	170	3	170	4	170	56	170	0
P.H.O.L. - Thunder Bay	49	0	0	0	0	0	49	0	49	0	0	0	0	1	49	1	49	0	49	25	49	1
P.H.O.L. - Sudbury	43	0	0	0	0	0	43	0	43	0	0	0	0	2	43	1	43	0	43	8	43	0
P.H.O.L. - Hamilton	396	0	2	0	2	2	396	13	396	0	0	0	0	17	396	4	396	1	396	76	396	1
P.H.O.L. - Peterborough	117	0	0	0	0	0	117	7	117	0	0	0	0	8	117	3	117	1	117	45	117	0
St. Joseph's - Hamilton	4201	0	0	23	23	3	4201	92	4201	0	0	116	0	0	4201	0	4201	24	4201	657	0	0
Province of Ontario	29240	14	66	116	140	6	29239	312	9075	6	0	130	1	154	9119	68	9117	52	9092	1545	4544	20
Manitoba	2985	0	0	2	2	0	2985	17	1345	0	2	9	0	0	1345	27	844	25	1345	201	844	2
Saskatchewan	2741	0	0	3	3	0	2651	5	1157	1	5	36	5	0	1159	39	1161	43	1159	198	1157	5
Alberta	11332	17	44	11	72	5	10062	65	5144	16	15	73	7	0	5143	63	5142	28	5043	992	5144	39
Prairies	17058	17	44	16	77	5	15698	87	7646	17	22	118	12	0	7647	129	7147	96	7547	1391	7145	46
British Columbia	13373	22	45	2	117	3	12616	76	2928	5	24	50	17	6	2928	58	2928	52	2860	750	2860	14
Yukon	37	0	0	0	0	0	37	0	N.C.	N.C.	N.C.	N.C.	N.C.	N.C.	N.C.	N.C.	N.C.	N.C.	N.C.	N.C.	N.C.	N.C.
Northwest Territories	200	0	0	0	0	0	200	7	0	0	0	0	0	0	0	0	0	0	200	91	0	0
Nunavut	474	3	10	0	13	0	474	16	N.C.	N.C.	N.C.	N.C.	N.C.	N.C.	N.C.	N.C.	N.C.	N.C.	N.C.	N.C.	N.C.	N.C.
Territories	711	3	10	0	13	0	711	23	0	0	0	0	0	0	0	0	0	0	200	91	0	0
CANADA	81628	56	167	167	382	25	75216	1207	24498	63	61	367	38	160	25844	435	25321	391	21492	4212	19972	104

The data in the RVDSS report represent surveillance data available at the time of writing. Data not collected by reporting lab denoted by N.C.

Specimens from Yukon (YT) are sent to reference laboratories in British Columbia and reported results reflect specimens identified as originating from YT.

Results from British Columbia comprise of specimens from the following sites: Children's and Women's Hospital Laboratory, Fraser Health Medical Microbiology Laboratory, Island Health, Providence Health Care, Vancouver Coastal Health sites, Victoria General Hospital, BCCDC Public Health Laboratory, Interior Health Authority sites and Northern Health Authority sites.

Due to different testing protocols of laboratories across Canada, influenza A subtype detection counts may not be included in total influenza A detection counts. Total influenza A and B positive counts are used to calculate percentage of tests positive.

Delays in the reporting of data may cause data to change retrospectively. Due to these delays, the sum of weekly report totals do not add up to cumulative totals.

Figure 2: Number of positive respiratory virus tests reported by participating laboratories in Canada by surveillance week

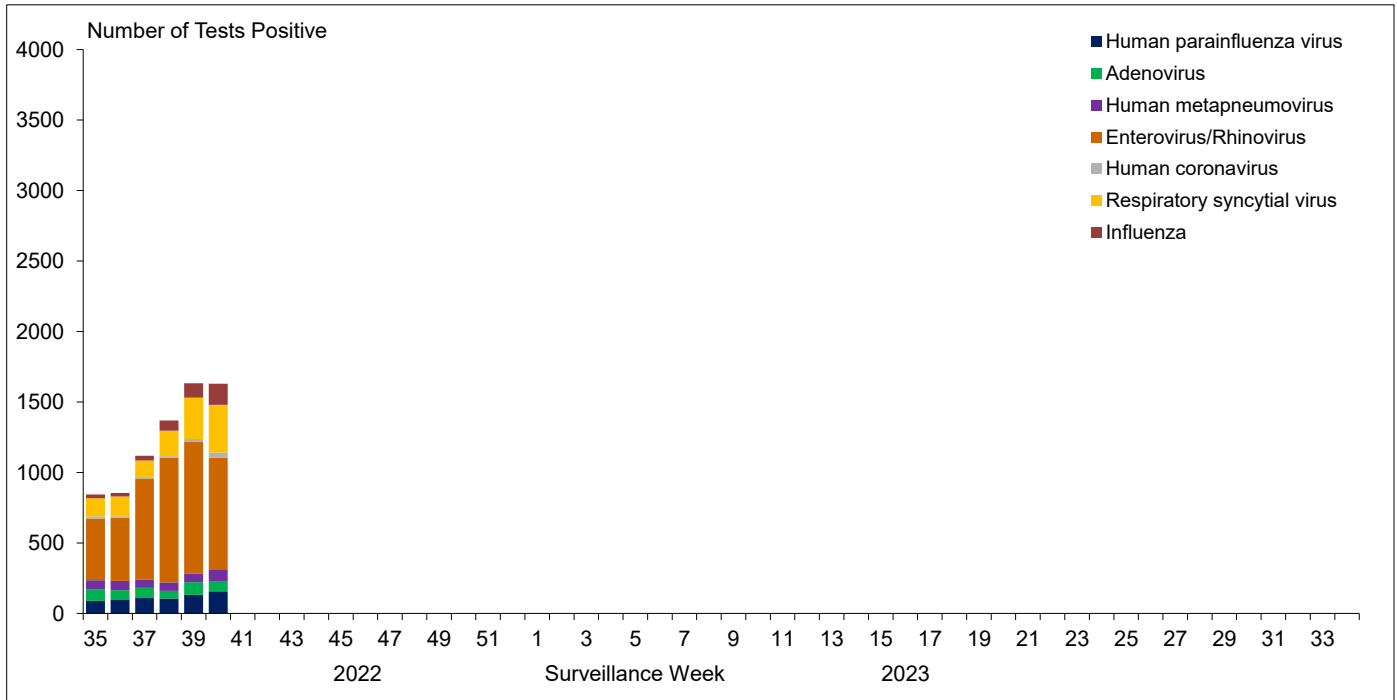


Figure 3: Positive Influenza (Flu) tests (%) in Canada by region by surveillance week

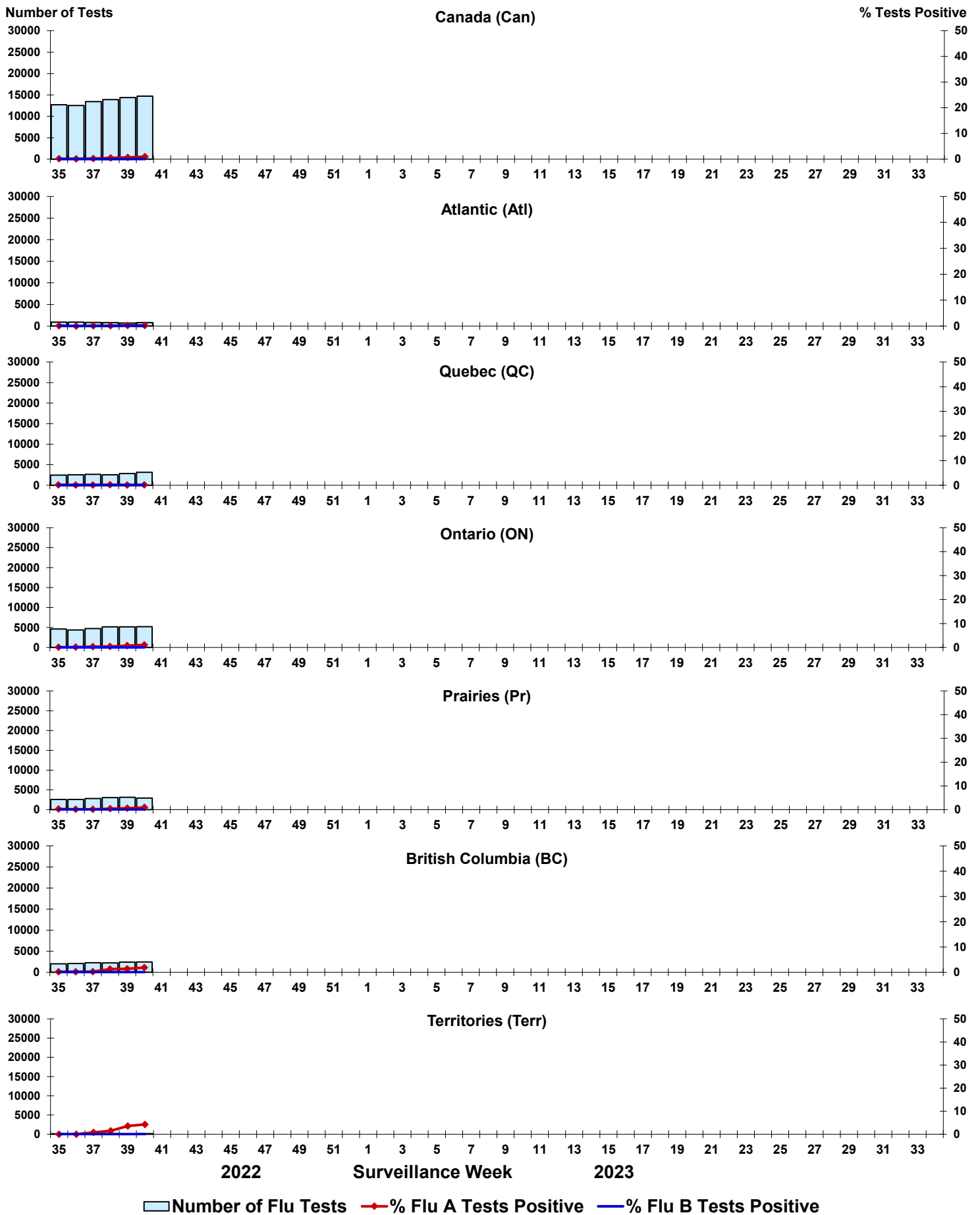


Figure 4: Positive Respiratory syncytial virus (RSV) tests (%) in Canada by region by surveillance week

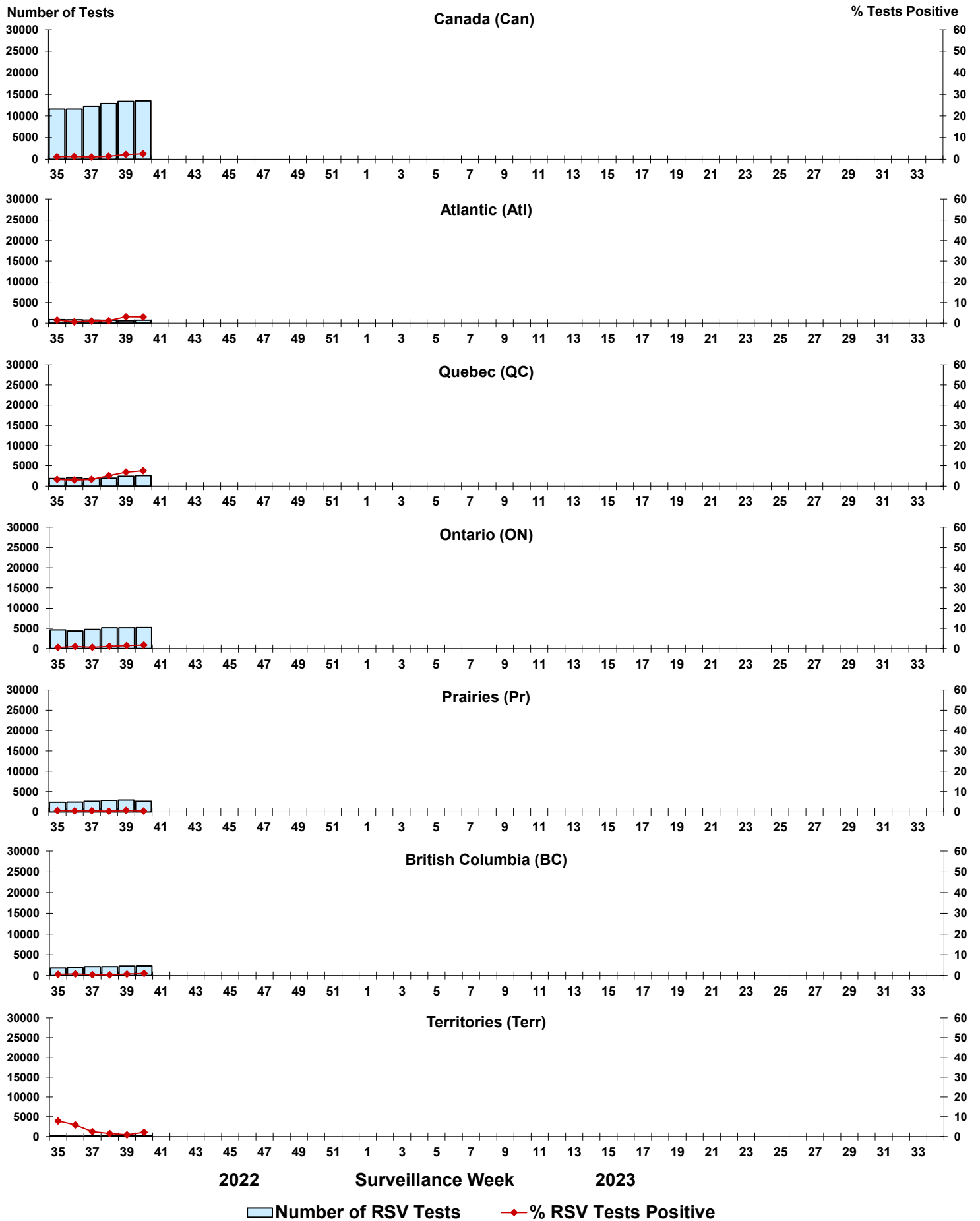


Figure 5: Positive Human parainfluenza virus (HPIV) tests (%) in Canada by region by surveillance week

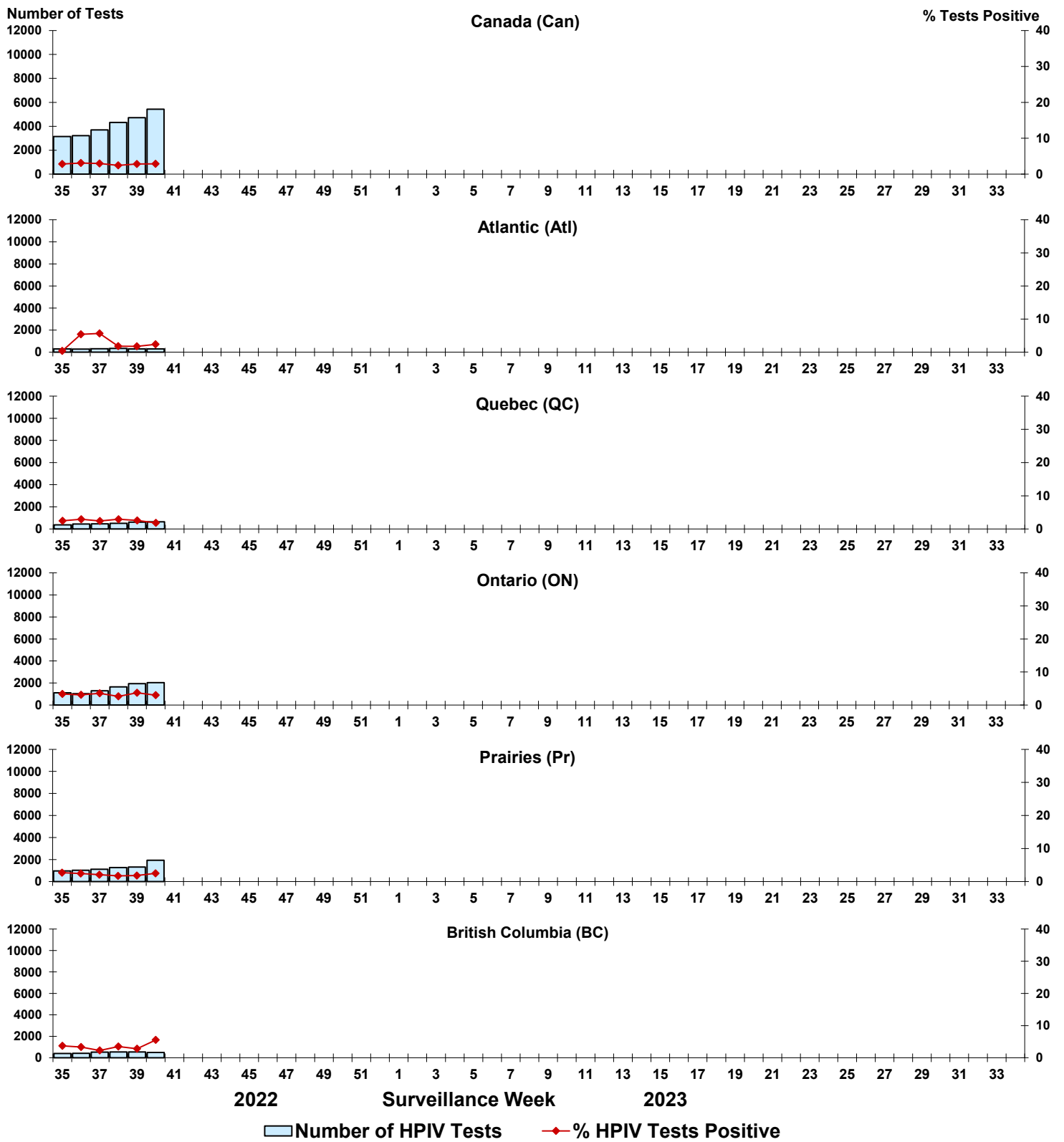


Figure 6: Positive Adenovirus (ADV) tests (%) in Canada by region by surveillance week

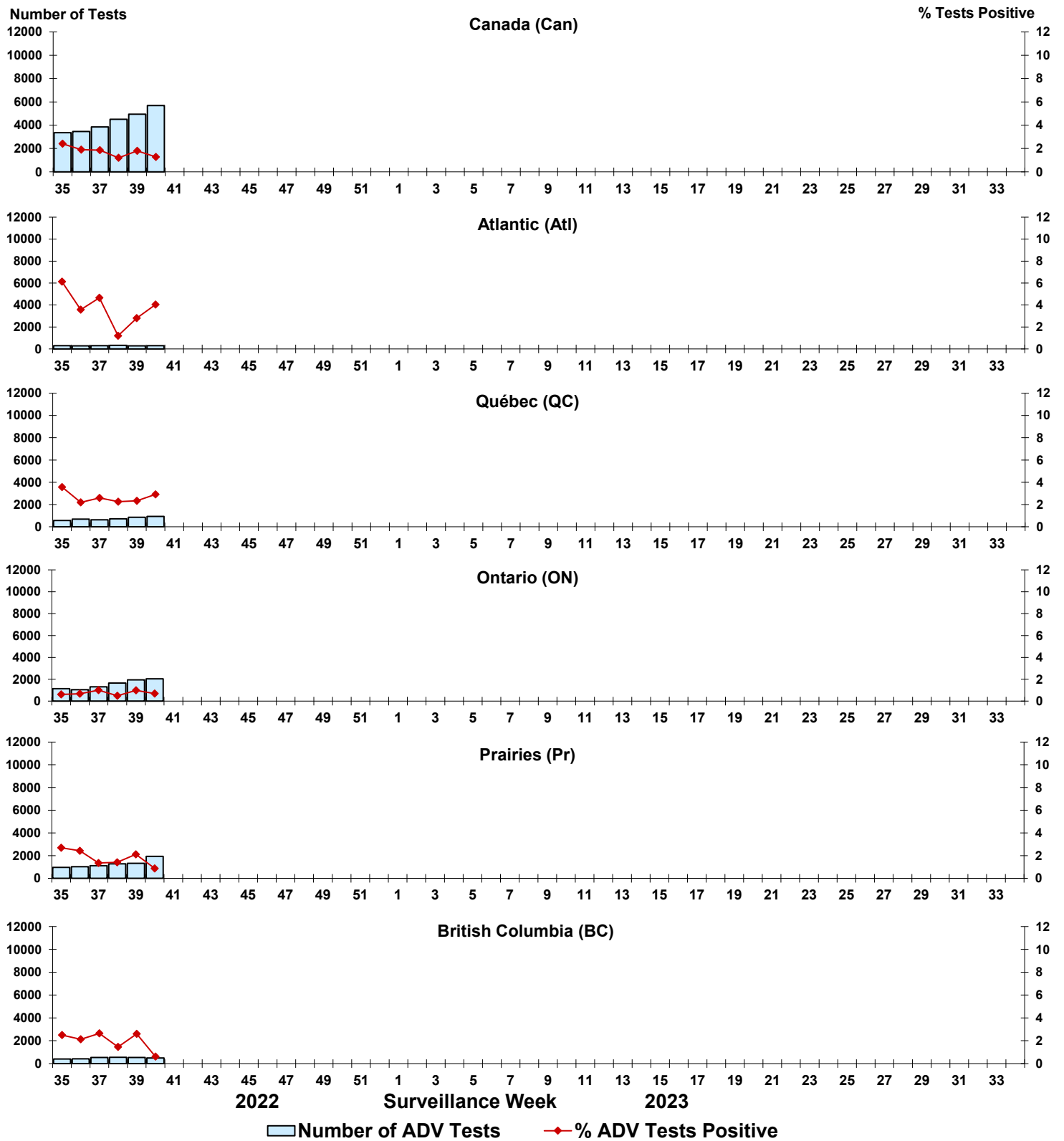


Figure 7: Positive Human metapneumovirus (HMPV) tests (%) in Canada by region by surveillance week

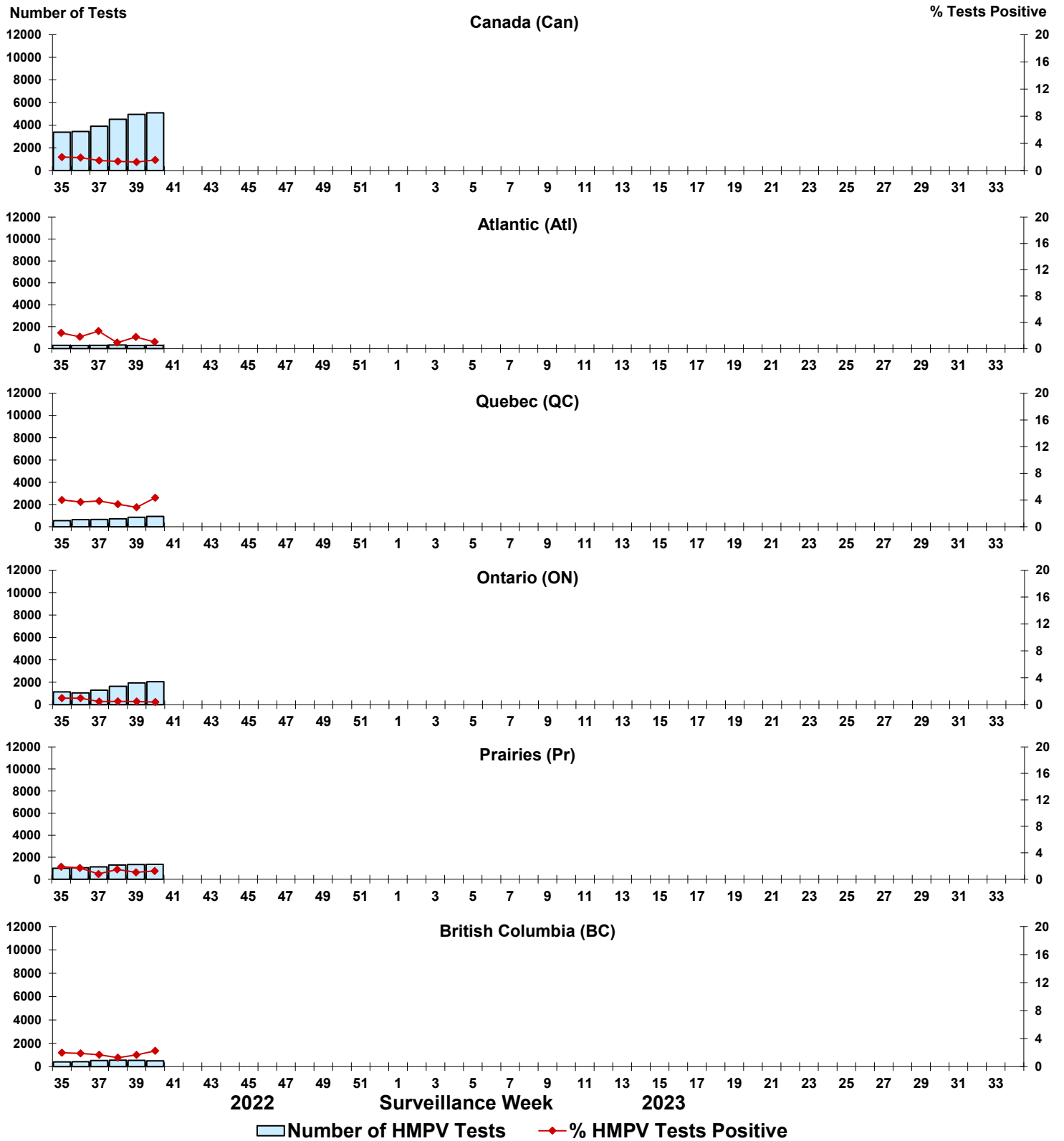


Figure 8: Positive Enterovirus/Rhinovirus (EV/RV) tests (%) in Canada by region by surveillance week

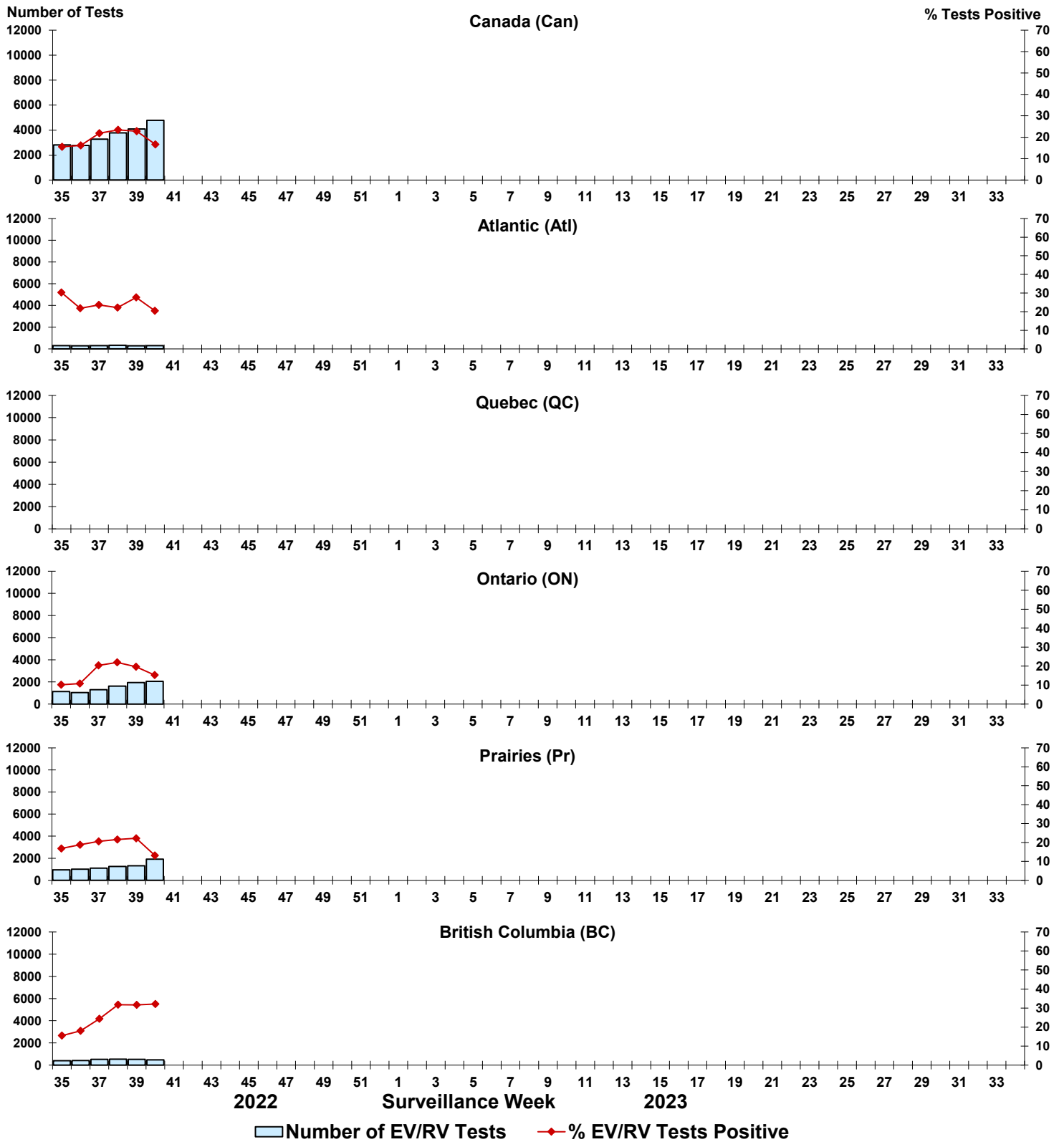


Figure 9: Positive Human coronavirus (HCoV) tests (%) in Canada by region by surveillance week

