

RESPIRATORY VIRUS DETECTION REPORT

November 13 to November 19, 2022
(Surveillance Week 2022-46)



In this Respiratory Virus Report, the number of detections of coronavirus reflects only seasonal human coronaviruses, not the novel pandemic coronavirus (SARS-CoV-2) that causes COVID-19. For information on COVID-19, see the [Coronavirus disease \(COVID-19\): Outbreak update](#).

Overall Summary

Activity of influenza and respiratory syncytial virus (RSV) remains elevated; among seasonal respiratory viruses, activity of influenza is highest and continues to increase.

- Influenza A activity is far above expected levels for this time of year and continues to increase (5,876 detections; 19.2% positive). Influenza A accounts for nearly all influenza detections in Canada.
- Activity of RSV is stabilizing (1,944 detections; 7.6% positive). RSV activity remains above expected levels for this time of year but is approaching levels typical of this time of year.
- Activity of most other respiratory viruses is near expected levels for this time of year.
- 34/35 sentinel laboratories reported surveillance data.

Abbreviations

Flu: Influenza

Flu A(H1N1)pdm09: Influenza A(H1N1)pdm09

Flu A(H3): Influenza A(H3N2)

Flu A (UnS): Influenza A(Unsubtyped)

RSV: Respiratory syncytial virus

HPIV: Human parainfluenza virus

HMPV: Human metapneumovirus

ADV: Adenovirus

EV/RV: Enterovirus/Rhinovirus

HCoV: Human coronavirus

Atl: Atlantic Canada

BC: British Columbia

Can: Canada

EORLA: Eastern Ontario Regional Laboratory Association

HSC: Health Sciences Centre

N.C.: Data not collected

N.R.: Data not reported for current week

ON: Ontario

PR: Prairies

P.H.O.L.: Public Health Ontario Laboratory

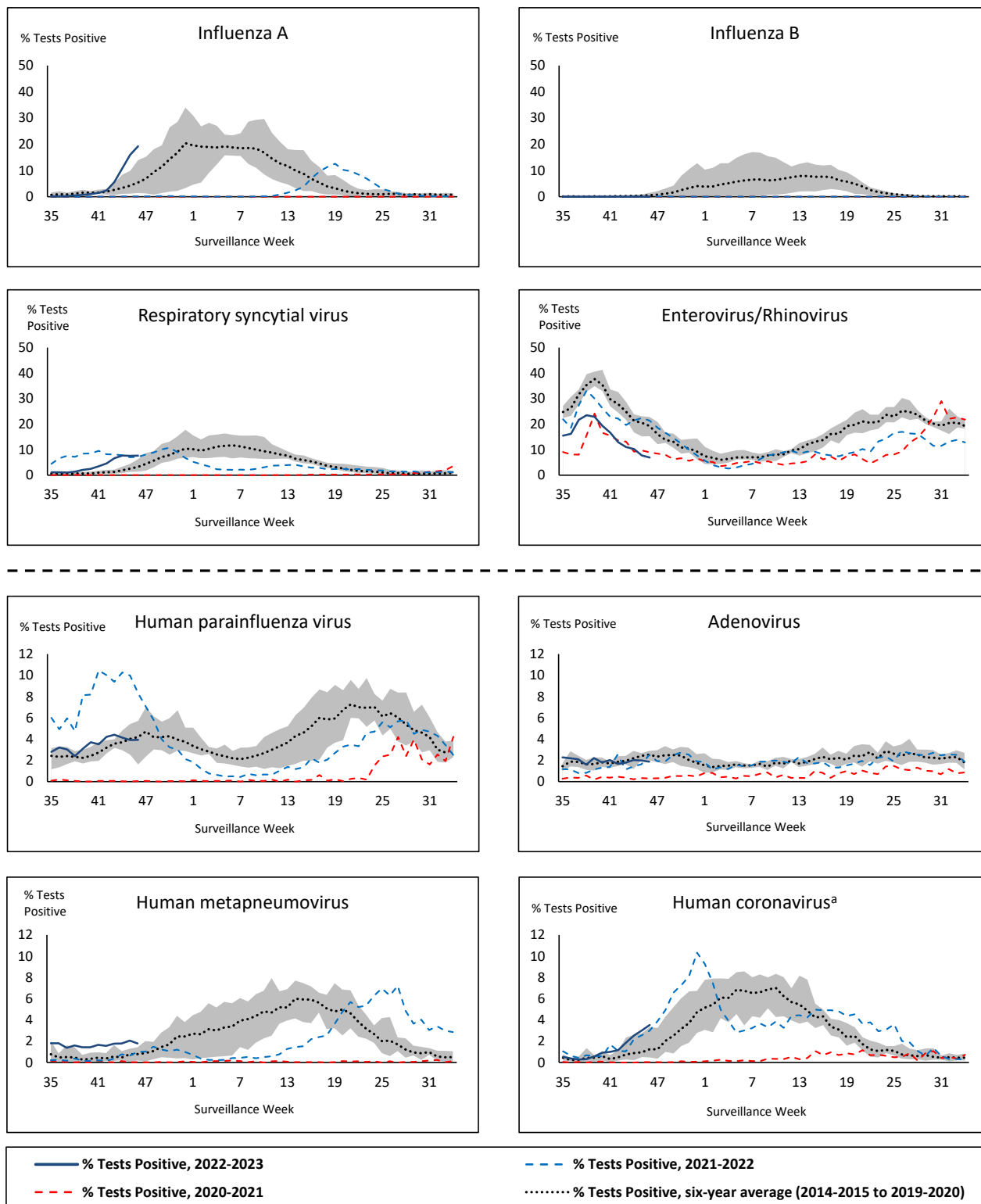
QC: Quebec

Terr: Territories of Canada

UHN: University Health Network



Figure 1: Positive respiratory virus tests (%) reported by participating laboratories in Canada by surveillance week compared to average and range from 2014-2015 to 2019-2020 season



Shaded area represents the maximum and minimum % of respiratory virus tests positive reported by week from seasons 2014-2015 to 2019-2020

Note: Data from week 11 of the 2019-2020 season onwards are excluded from the historical comparison due to the COVID-19 pandemic

Note: % Tests Positive scale changes across the dashed line

^a Human coronavirus excludes human coronaviruses SARS-CoV, MERS-CoV and SARS-CoV-2; Includes seasonal human coronaviruses HCoV-229E, HCoV-OC43, HCoV-NL63, HCoV-HKU1.

Table 1: Respiratory virus detections for the week ending November 19, 2022 (surveillance week 2022-46)

Reporting Laboratory	Flu Tested	A(H1)pdm09 Positive	A(H3) Positive	A(UnS) Positive	Total Flu A Positive	Total Flu B Positive	RSV Tested	RSV Positive	HPIV Tested	HPIV 1 Positive	HPIV 2 Positive	HPIV 3 Positive	HPIV 4 Positive	Other HPIV Positive	ADV Tested	ADV Positive	HMPV Tested	HMPV Positive	EV/RV Tested	EV/RV Positive	HCoV Tested	HCoV Positive
Newfoundland	314	0	7	2	9	0	314	13	314	0	1	2	2	0	314	11	314	20	314	44	314	3
Prince Edward Island	87	0	24	1	25	0	87	1	85	2	5	9	0	0	85	3	85	1	85	15	85	2
Nova Scotia	1550	0	0	239	239	0	1550	124	36	1	2	0	0	0	36	1	36	0	36	8	36	0
New Brunswick	1482	0	13	213	226	0	587	35	140	1	2	7	0	0	140	10	140	0	140	39	140	10
Atlantic	3433	0	44	455	499	0	2538	173	575	4	10	18	2	0	575	25	575	21	575	106	575	15
Région Nord-Est	1039	0	0	24	24	1	326	67	24	0	0	3	0	0	24	0	24	1	N.C.	N.C.	24	3
Québec-Chaudière-Appalaches	672	0	0	51	51	0	674	153	251	1	0	2	0	0	263	15	251	11	N.C.	N.C.	251	19
Centre-du-Québec	606	0	0	76	76	0	588	90	23	0	0	0	0	0	23	1	23	2	N.C.	N.C.	23	2
Montréal-Laval	3075	0	1	447	448	1	1622	159	866	6	2	14	1	0	868	31	872	64	N.C.	N.C.	818	15
Ouest du Québec	584	0	2	140	142	0	496	74	40	1	0	5	0	0	40	10	40	0	N.C.	N.C.	40	3
Montérégie	446	0	0	117	117	1	446	63	8	0	0	0	0	0	8	0	8	0	N.C.	N.C.	8	0
Province of Québec	6422	0	3	855	858	3	4152	606	1212	8	2	24	1	0	1226	57	1218	78	N.C.	N.C.	1164	42
P.H.O.L. - Ottawa	118	0	8	1	9	0	118	6	118	0	0	0	0	6	118	0	118	0	118	20	118	2
EORLA	604	0	0	151	151	0	604	83	48	0	0	1	2	0	48	2	48	1	48	6	48	5
P.H.O.L. - Kingston	109	0	14	2	16	0	109	4	83	0	0	0	0	3	83	1	83	0	83	13	83	4
UHN / Mount Sinai Hospital	696	0	5	42	47	0	696	14	27	0	0	0	0	0	27	0	27	0	27	0	27	2
P.H.O.L. - Toronto	1140	3	294	14	141	0	1138	49	1013	0	0	0	0	49	1013	17	1013	2	1013	75	1013	32
Sick Kids Hospital - Toronto	N.R.	N.R.	N.R.	N.R.	N.R.	N.R.	N.R.	N.R.	N.R.	N.R.	N.R.	N.R.	N.R.	N.R.	N.R.	N.R.	N.R.	N.R.	N.R.	N.R.	N.R.	N.R.
Shared Hospital Laboratory	2448	0	151	87	238	0	2448	156	2080	0	0	0	0	28	2080	18	2089	2	2089	37	2089	36
P.H.O.L. - Sault Ste. Marie	29	0	3	3	6	0	29	0	24	0	0	0	0	1	24	0	24	0	24	0	24	1
P.H.O.L. - Timmins	47	0	10	2	11	0	46	1	46	0	0	0	0	6	46	1	46	0	46	5	46	1
St. Joseph's - London	686	0	0	81	81	3	686	71	48	0	0	0	0	4	48	4	48	0	48	8	57	3
P.H.O.L. - London	344	1	69	5	75	1	344	31	327	0	0	0	0	28	327	4	327	1	327	16	327	11
P.H.O.L. - Orillia	109	2	27	2	31	0	109	14	109	0	0	0	0	2	109	1	109	0	109	10	109	9
P.H.O.L. - Thunder Bay	96	0	22	2	24	0	96	4	67	0	0	0	0	0	67	2	67	0	67	3	67	2
P.H.O.L. - Sudbury	38	0	0	3	3	0	38	0	27	0	0	0	0	0	27	0	27	0	27	2	27	0
P.H.O.L. - Hamilton	298	0	55	6	61	0	298	44	245	0	0	0	0	9	245	5	245	1	245	9	245	14
P.H.O.L. - Peterborough	44	0	8	0	8	0	44	3	44	0	0	0	0	0	44	0	44	0	44	6	44	7
St. Joseph's - Hamilton	1531	0	0	308	308	2	1531	163	1531	0	0	47	0	0	1531	13	1531	5	1531	79	0	0
Sault Area Hospital	391	0	21	19	40	0	391	3	106	7	0	3	0	0	106	3	106	4	106	6	106	2
Province of Ontario	8728	6	687	728	1250	6	8725	646	5943	7	0	51	2	136	5943	71	5952	16	5952	295	4430	131
Manitoba	1122	4	30	141	175	0	1122	62	186	1	0	17	0	0	186	6	210	8	186	26	210	6
Saskatchewan	1852	0	0	634	634	1	1558	29	775	1	4	42	0	0	775	16	775	44	775	52	781	26
Alberta	4210	42	966	345	1353	3	3276	187	1754	7	6	28	2	0	1753	15	1751	21	1735	92	1754	104
Prairies	7184	46	996	1120	2162	4	5956	278	2715	9	10	87	2	0	2714	37	2736	73	2696	170	2745	136
British Columbia	4626	21	466	0	1089	2	3926	237	832	18	12	33	7	0	832	21	832	15	799	119	799	19
Yukon	19	0	2	0	2	0	19	0	N.C.	N.C.	N.C.	N.C.	N.C.	N.C.	N.C.	N.C.	N.C.	N.C.	N.C.	N.C.	N.C.	N.C.
Northwest Territories	51	0	4	0	4	0	51	4	0	0	0	0	0	0	0	0	0	0	51	7	0	0
Nunavut	101	0	11	1	12	0	101	0	N.C.	N.C.	N.C.	N.C.	N.C.	N.C.	N.C.	N.C.	N.C.	N.C.	N.C.	N.C.	N.C.	N.C.
Territories	171	0	17	1	18	0	171	4	0	0	0	0	0	0	0	0	0	0	51	7	0	0
CANADA	30564	73	2213	3159	5876	15	25468	1944	11277	46	34	213	14	136	11290	211	11313	203	10073	697	9713	343

The data in the RVDSS report represent surveillance data available at the time of writing. Data missing from the current week are denoted by N.R. Data not collected by reporting lab denoted by N.C.

Specimens from Yukon (YT) are sent to reference laboratories in British Columbia and reported results reflect specimens identified as originating from YT.

Results from British Columbia comprise of specimens from the following sites: Children's and Women's Hospital Laboratory, Fraser Health Medical Microbiology Laboratory, Island Health, Providence Health Care, Vancouver Coastal Health sites, Victoria General Hospital, BCCDC Public Health Laboratory, Interior Health Authority sites and Northern Health Authority sites.

Due to different testing protocols of laboratories across Canada, influenza A subtype detection counts may not be included in total influenza A detection counts. Total influenza A and B positive counts are used to calculate percentage of tests positive.

Delays in the reporting of data may cause data to change retrospectively.

Table 2: Cumulative respiratory virus detections from August 28, 2022 to November 19, 2022 (surveillance weeks 2022-35 to 2022-46)

Reporting Laboratory	Flu Tested	A(H1)pdm09 Positive	A(H3) Positive	A(UnS) Positive	Total Flu A Positive	Total Flu B Positive	RSV Tested	RSV Positive	HPIV Tested	HPIV 1 Positive	HPIV 2 Positive	HPIV 3 Positive	HPIV 4 Positive	Other HPIV Positive	ADV Tested	ADV Positive	HMPV Tested	HMPV Positive	EV/RV Tested	EV/RV Positive	HCoV Tested	HCoV Positive
Newfoundland	2404	0	14	4	18	0	2404	97	2404	2	9	16	5	0	2404	46	2404	82	2404	337	2404	6
Prince Edward Island	594	0	47	3	50	0	594	9	592	10	18	39	2	0	592	38	592	9	592	254	592	5
Nova Scotia	5346	0	3	398	401	1	5345	381	555	4	6	9	1	0	555	22	555	0	555	138	555	4
New Brunswick	6175	0	25	428	453	2	3727	80	697	1	11	40	4	0	697	58	697	1	697	213	642	19
Atlantic	14519	0	89	833	922	3	12070	567	4248	17	44	104	12	0	4248	164	4248	92	4248	942	4193	34
Région Nord-Est	10798	0	0	43	43	3	2208	196	296	3	2	19	0	0	296	12	296	9	N.C.	N.C.	296	6
Québec-Chaudière-Appalaches	4170	0	0	71	71	1	4182	701	1919	17	4	22	0	0	2070	122	1919	97	N.C.	N.C.	1919	46
Centre-du-Québec	3312	0	0	132	132	1	3254	420	309	12	0	14	0	0	309	19	309	37	N.C.	N.C.	309	3
Montréal-Laval	16487	0	5	844	849	8	12834	1334	6866	87	12	117	5	0	6868	225	6941	411	N.C.	N.C.	6663	65
Ouest du Québec	3119	0	3	219	222	1	2677	414	495	16	0	38	0	0	495	83	495	22	N.C.	N.C.	495	16
Montérégie	4561	0	0	222	222	4	4495	479	49	0	0	1	0	0	49	0	49	0	N.C.	N.C.	49	0
Province of Québec	42447	0	8	1531	1539	18	29650	3544	9934	135	18	211	5	0	10087	461	10009	576	N.C.	N.C.	9731	136
P.H.O.L. - Ottawa	833	0	23	1	24	0	833	18	833	0	0	0	0	22	833	1	833	10	833	84	833	8
EORLA	4063	0	0	296	296	2	4063	452	488	6	3	13	6	0	488	19	488	13	488	152	488	16
P.H.O.L. - Kingston	723	0	34	4	38	0	723	40	689	0	0	0	0	28	689	15	689	6	689	111	689	13
UHN / Mount Sinai Hospital	6081	0	10	143	153	7	6081	46	258	0	0	1	0	0	225	1	258	0	258	10	258	18
P.H.O.L. - Toronto	5899	27	888	18	340	0	5883	130	5752	0	0	0	0	272	5754	86	5751	50	5752	632	5751	103
Sick Kids Hospital - Toronto	0	0	0	0	0	0	0	0	0	0	0	0	0	0	0	0	0	0	0	0	0	0
Shared Hospital Laboratory	32485	12	696	332	1040	2	32486	793	11054	4	0	16	0	168	11067	76	11089	23	11060	371	10936	130
P.H.O.L. - Sault Ste. Marie	109	0	4	3	7	0	109	0	104	0	0	0	0	1	104	0	104	0	104	8	104	1
P.H.O.L. - Timmins	213	0	24	2	25	0	212	1	212	0	0	0	0	20	212	2	212	6	212	34	212	10
St. Joseph's - London	2334	0	0	177	177	3	2334	219	628	0	0	0	0	20	662	19	662	0	662	134	251	15
P.H.O.L. - London	2056	5	238	11	247	1	2056	137	2039	0	0	0	0	120	2039	33	2039	6	2039	230	2039	36
P.H.O.L. - Orillia	805	4	165	4	173	0	805	50	805	0	0	0	0	54	805	14	805	8	805	140	805	23
P.H.O.L. - Thunder Bay	291	0	68	2	70	0	290	4	261	0	0	0	0	1	261	5	261	0	261	35	261	4
P.H.O.L. - Sudbury	127	0	1	3	4	0	127	2	116	0	0	0	0	3	116	2	116	1	116	13	116	5
P.H.O.L. - Hamilton	1552	0	140	9	149	3	1549	146	1465	0	0	0	0	58	1465	19	1465	10	1465	166	1465	30
P.H.O.L. - Peterborough	384	0	37	0	37	0	384	21	384	0	0	0	0	16	384	5	384	2	384	83	384	10
St. Joseph's - Hamilton	11999	0	0	1209	1209	6	11999	717	11999	0	0	373	0	0	11999	94	11999	41	11999	1200	0	0
Sault Area Hospital	2728	0	60	21	81	0	2728	14	926	14	0	7	0	0	926	22	926	36	926	148	926	6
Province of Ontario	72682	48	2388	2235	4070	24	72662	2790	38013	24	3	410	6	783	38029	413	38081	212	38053	3551	25518	428
Manitoba	7888	9	54	214	277	0	7888	200	1820	1	2	58	4	0	1820	64	2033	79	1820	428	2033	16
Saskatchewan	9148	0	0	1395	1395	2	7767	92	3559	9	22	170	8	0	3561	98	3563	169	3561	511	3564	87
Alberta	30629	140	2974	645	3759	12	26095	642	13045	77	42	241	17	0	13043	163	13028	94	12791	1786	13045	420
Prairies	47665	149	3028	2254	5431	14	41750	934	18424	87	66	469	29	0	18424	325	18624	342	18172	2725	18642	523
British Columbia	32959	114	1221	12	2235	12	30442	717	7591	81	92	264	37	6	7591	151	7591	128	7366	1740	7366	53
Yukon	94	0	2	0	2	0	91	1	N.C.	N.C.	N.C.	N.C.	N.C.	N.C.	N.C.	N.C.	N.C.	N.C.	N.C.	N.C.	N.C.	N.C.
Northwest Territories	499	0	7	0	7	0	499	22	0	0	0	0	0	0	0	0	0	0	499	177	0	0
Nunavut	1020	3	173	2	178	0	1020	21	N.C.	N.C.	N.C.	N.C.	N.C.	N.C.	N.C.	N.C.	N.C.	N.C.	N.C.	N.C.	N.C.	N.C.
Territories	1613	3	182	2	187	0	1610	44	0	0	0	0	0	0	0	0	0	0	499	177	0	0
CANADA	211885	314	6916	6867	14384	71	188184	8596	78210	344	223	1458	89	789	78379	1514	78553	1350	68338	9135	65450	1174

The data in the RVDSS report represent surveillance data available at the time of writing. Data not collected by reporting lab denoted by N.C.

Specimens from Yukon (YT) are sent to reference laboratories in British Columbia and reported results reflect specimens identified as originating from YT.

Results from British Columbia comprise of specimens from the following sites: Children's and Women's Hospital Laboratory, Fraser Health Medical Microbiology Laboratory, Island Health, Providence Health Care, Vancouver Coastal Health sites, Victoria General Hospital, BCCDC Public Health Laboratory, Interior Health Authority sites and Northern Health Authority sites.

Due to different testing protocols of laboratories across Canada, influenza A subtype detection counts may not be included in total influenza A detection counts. Total influenza A and B positive counts are used to calculate percentage of tests positive.

Delays in the reporting of data may cause data to change retrospectively. Due to these delays, the sum of weekly report totals do not add up to cumulative totals.

Figure 3: Positive Influenza (Flu) tests (%) in Canada by region by surveillance week

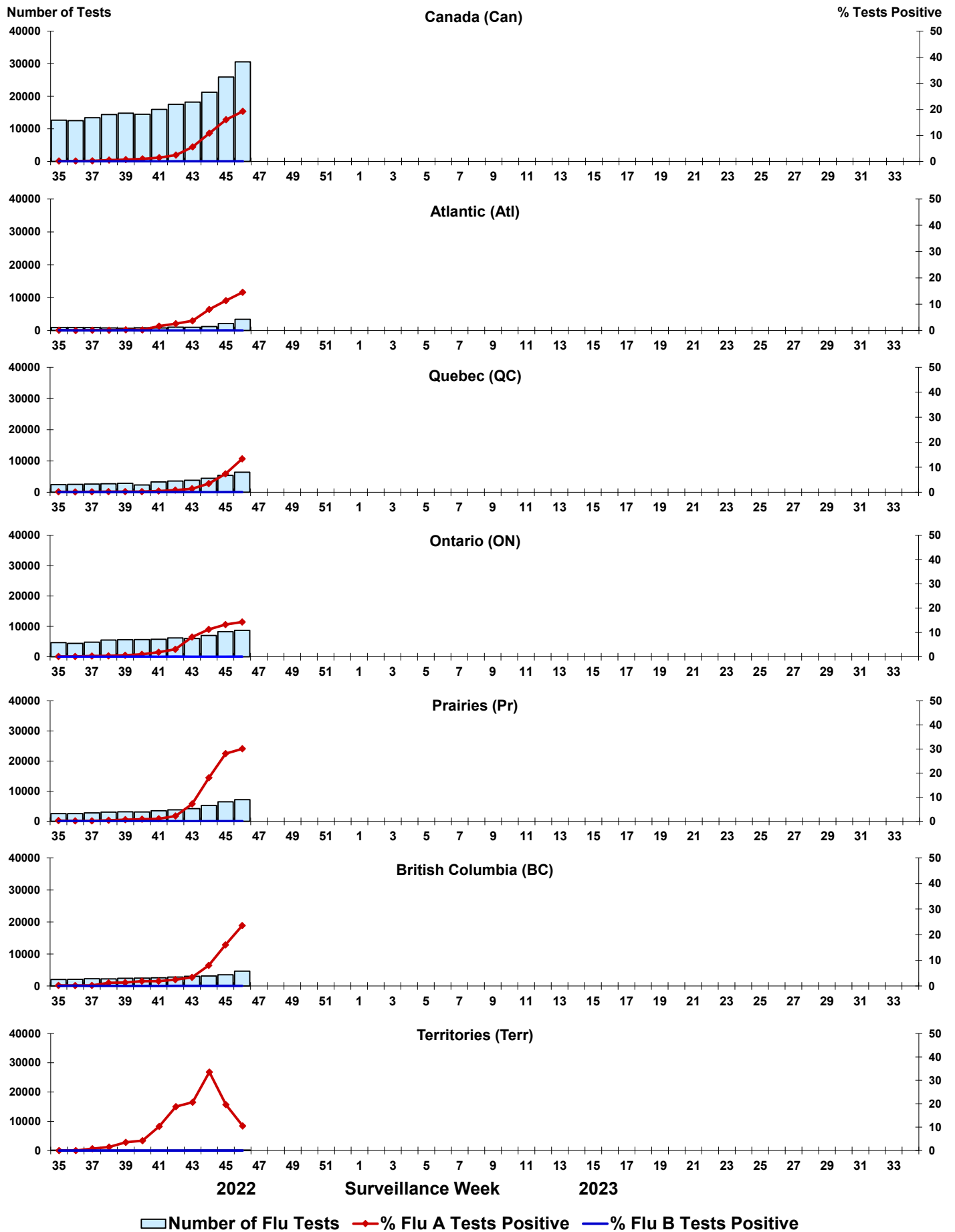


Figure 4: Positive Respiratory syncytial virus (RSV) tests (%) in Canada by region by surveillance week

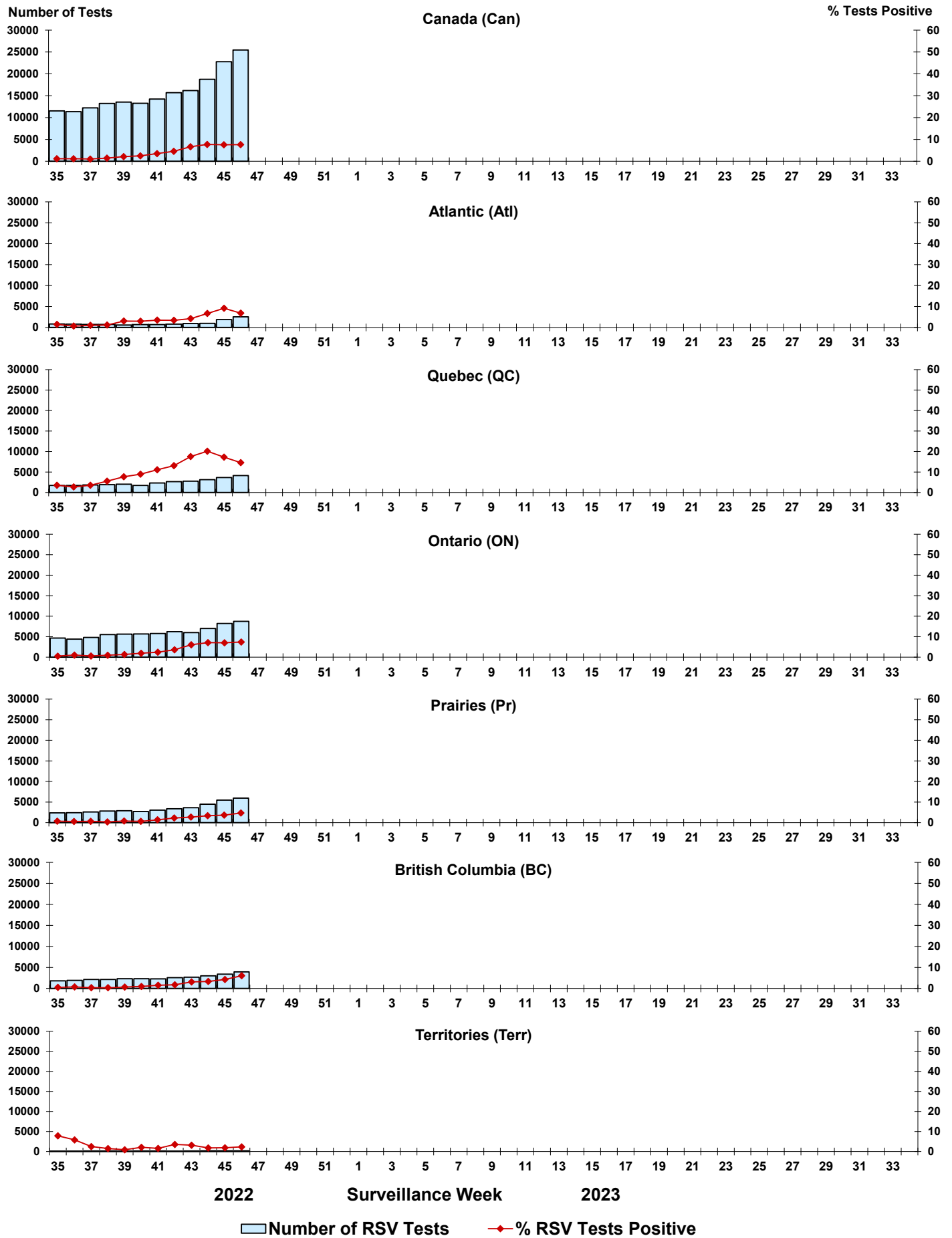


Figure 5: Positive Human parainfluenza virus (HPIV) tests (%) in Canada by region by surveillance week

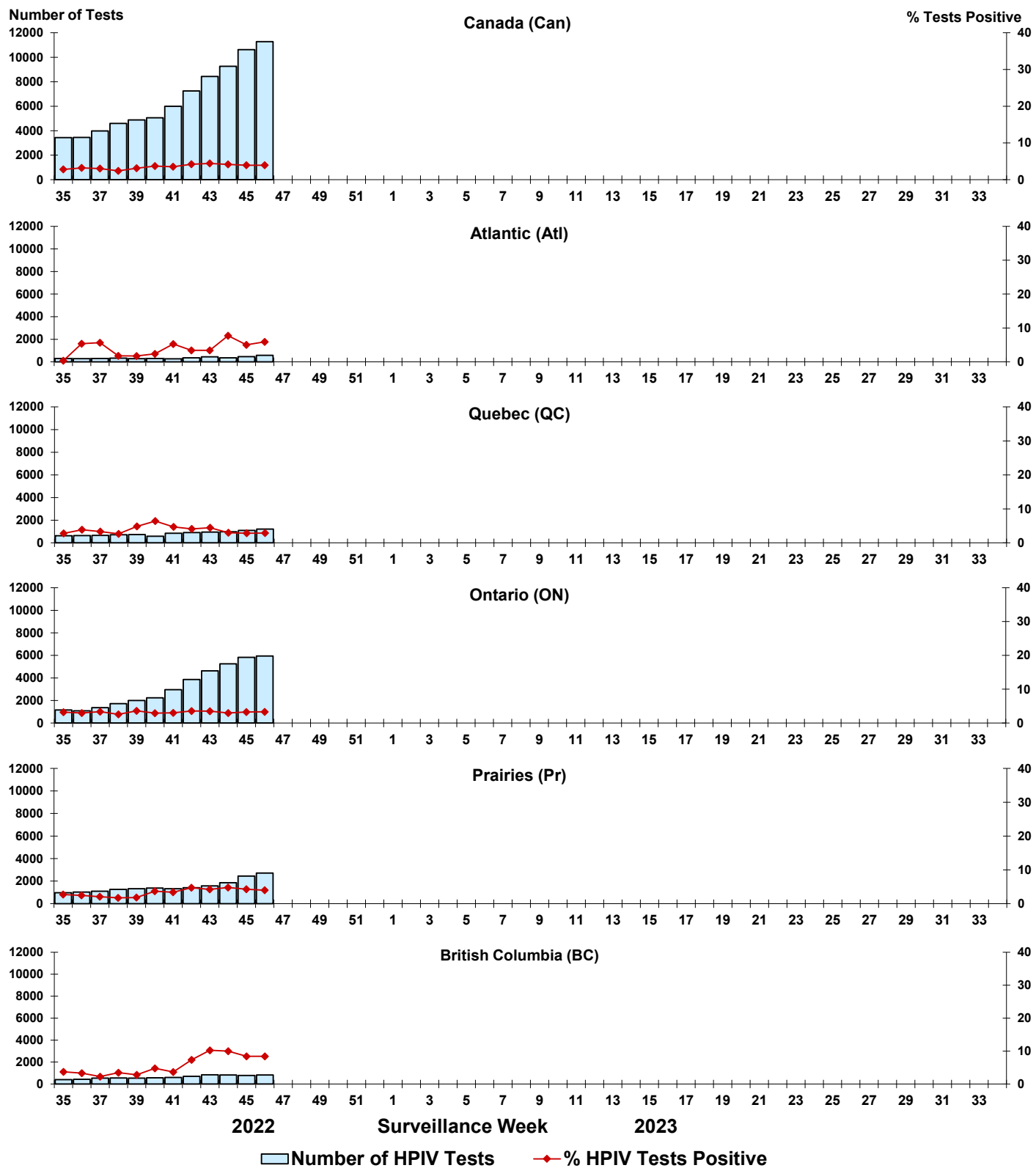


Figure 6: Positive Adenovirus (ADV) tests (%) in Canada by region by surveillance week

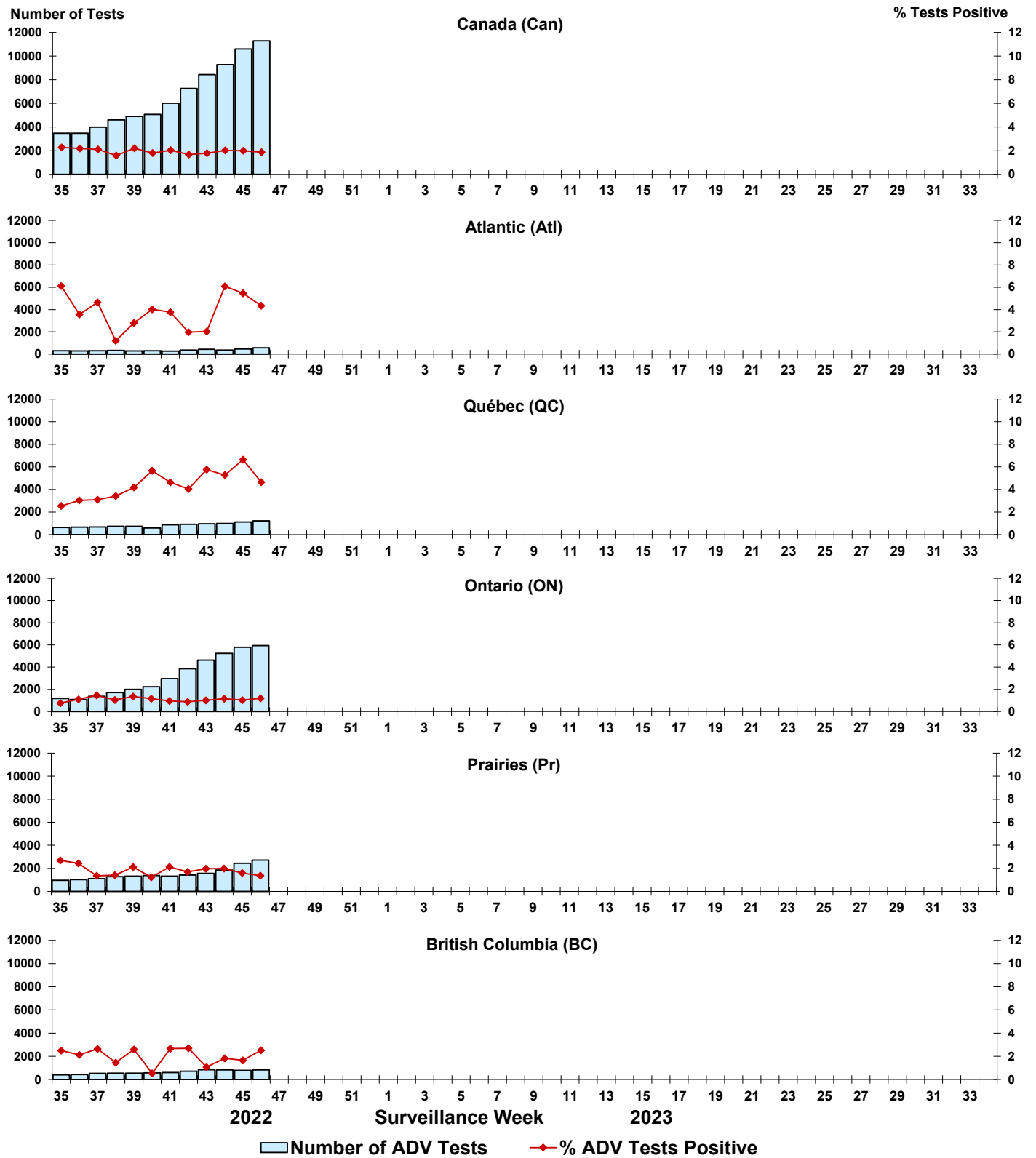


Figure 7: Positive Human metapneumovirus (HMPV) tests (%) in Canada by region by surveillance week

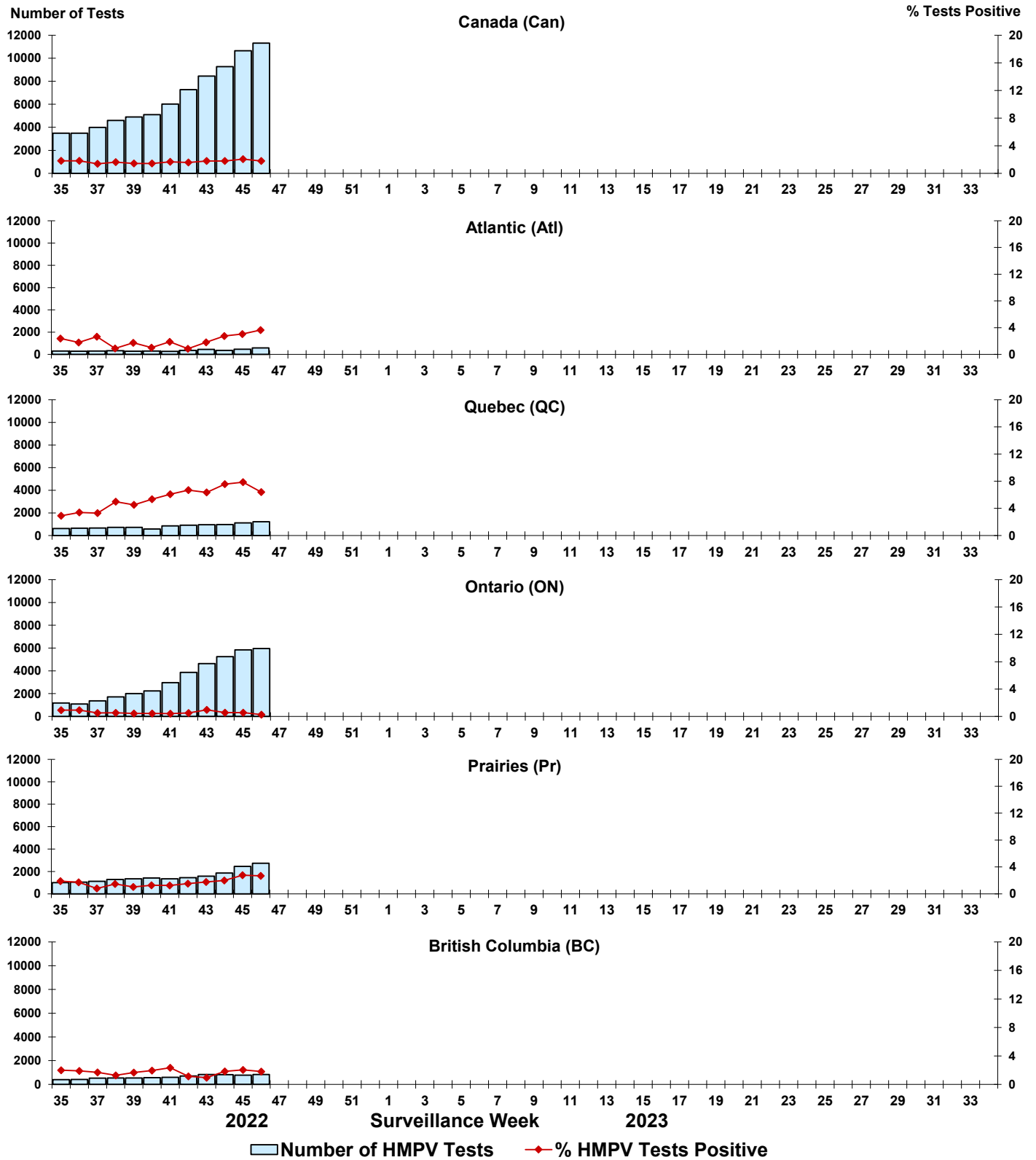


Figure 8: Positive Enterovirus/Rhinovirus (EV/RV) tests (%) in Canada by region by surveillance week

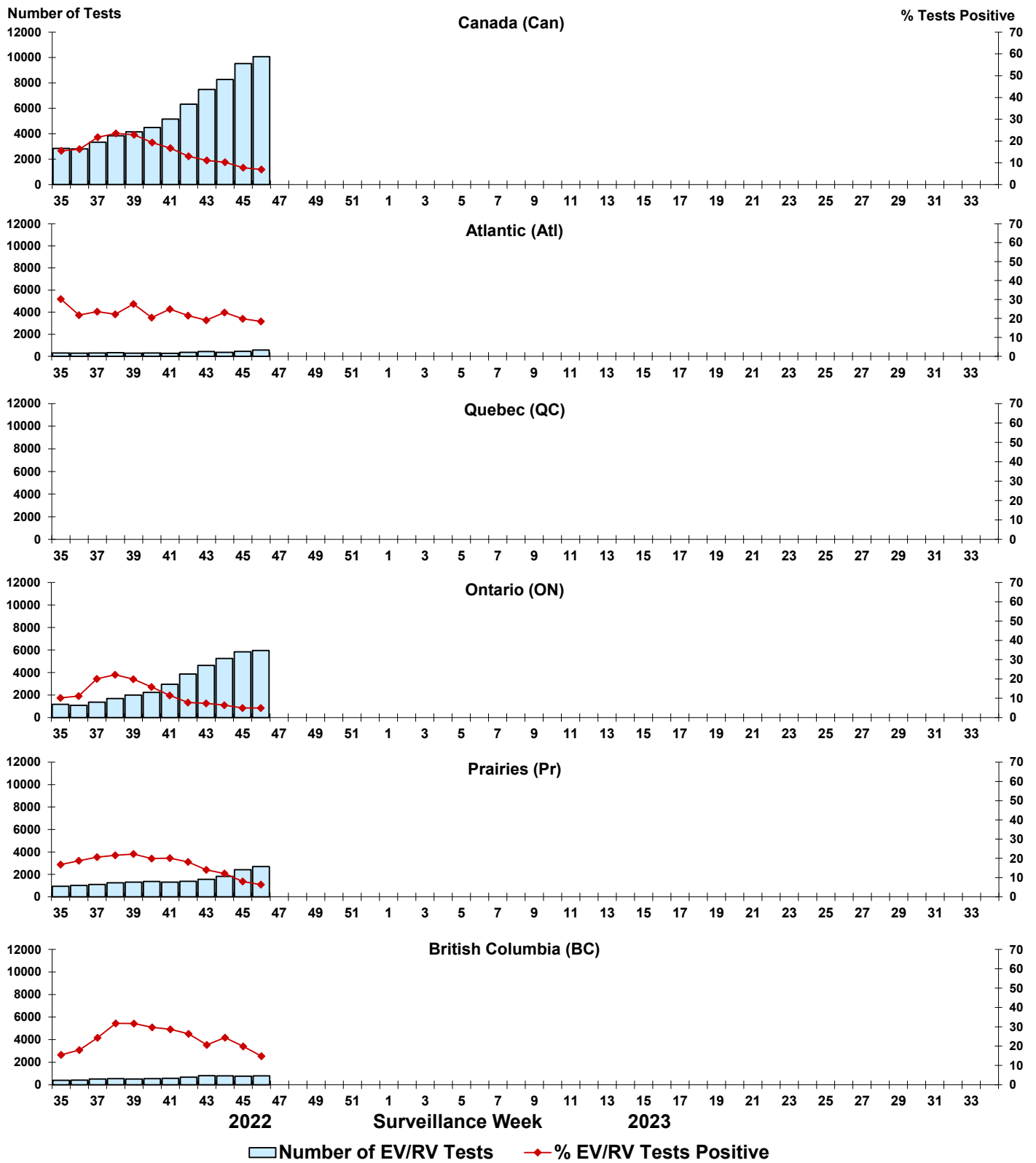


Figure 9: Positive Human coronavirus (HCoV) tests (%) in Canada by region by surveillance week

