

# RESPIRATORY VIRUS DETECTION REPORT

November 20 to November 26, 2022  
(Surveillance Week 2022-47)



Please note that the Respiratory Virus Detection Surveillance System (RVDSS) is a sentinel laboratory surveillance system that does not capture all respiratory virus testing performed in Canada; differences may exist between the data presented in this report and provincial/territorial epidemiological reports. SARS-CoV-2 laboratory data is included in this report to facilitate the comparison of positivity with other respiratory viruses. Interpretation should be made with caution as testing practices differ among viruses.

For additional SARS-CoV-2 surveillance information, please refer to the [COVID-19 epidemiology update](#).

## Overall Summary

In week 47 (week ending November 26, 2022) in Canada, participating RVDSS laboratories reported 10,639 detections of SARS-CoV-2 from 89,913 tests (11.8% positive). Among non-SARS-CoV-2 respiratory viruses, where test volumes are lower (range of 9,346 to 35,629 tests), activity of influenza is highest and increasing.

- Influenza A activity is far above expected levels for this time of year and continues to increase (8,226 detections; 23.1% positive). Influenza A accounts for nearly all influenza detections in Canada.
- Activity of respiratory syncytial virus (RSV) has stabilized (2,099 detections; 6.9% positive). Compared to pre-pandemic seasons, RSV activity is higher than average but within expected levels typical of this time of year.
- Activity of most other non-SARS-CoV-2 respiratory viruses is near expected levels typical of this time of year.
- 33/35 sentinel laboratories reported surveillance data.

## Abbreviations

ADV: Adenovirus

Atl: Atlantic Canada

BC: British Columbia

Can: Canada

EORLA: Eastern Ontario Regional Laboratory Association

EV/RV: Enterovirus/Rhinovirus

Flu: Influenza

Flu A(H1N1)pdm09: Influenza A(H1N1)pdm09

Flu A(H3): Influenza A(H3N2)

Flu A (UnS): Influenza A(Unsubtyped)

HCoV: Human coronavirus 229E/OC43/NL63/HKU1

HMPV: Human metapneumovirus

HPIV: Human parainfluenza virus

HSC: Health Sciences Centre

N.C.: Data not collected

N.R.: Data not reported for current week

ON: Ontario

PR: Prairies

P.H.O.L.: Public Health Ontario Laboratory

QC: Quebec

RSV: Respiratory syncytial virus

RVDSS: Respiratory Virus Detection Surveillance System

SARS-CoV-2: Severe acute respiratory syndrome coronavirus 2

Terr: Territories of Canada

UHN: University Health Network

© His Majesty the King in Right of Canada, as represented by the Minister of Health, 2021

ISSN: 2564-2359 | Cat.: HP38-7E-PDF | Pub.: 210284

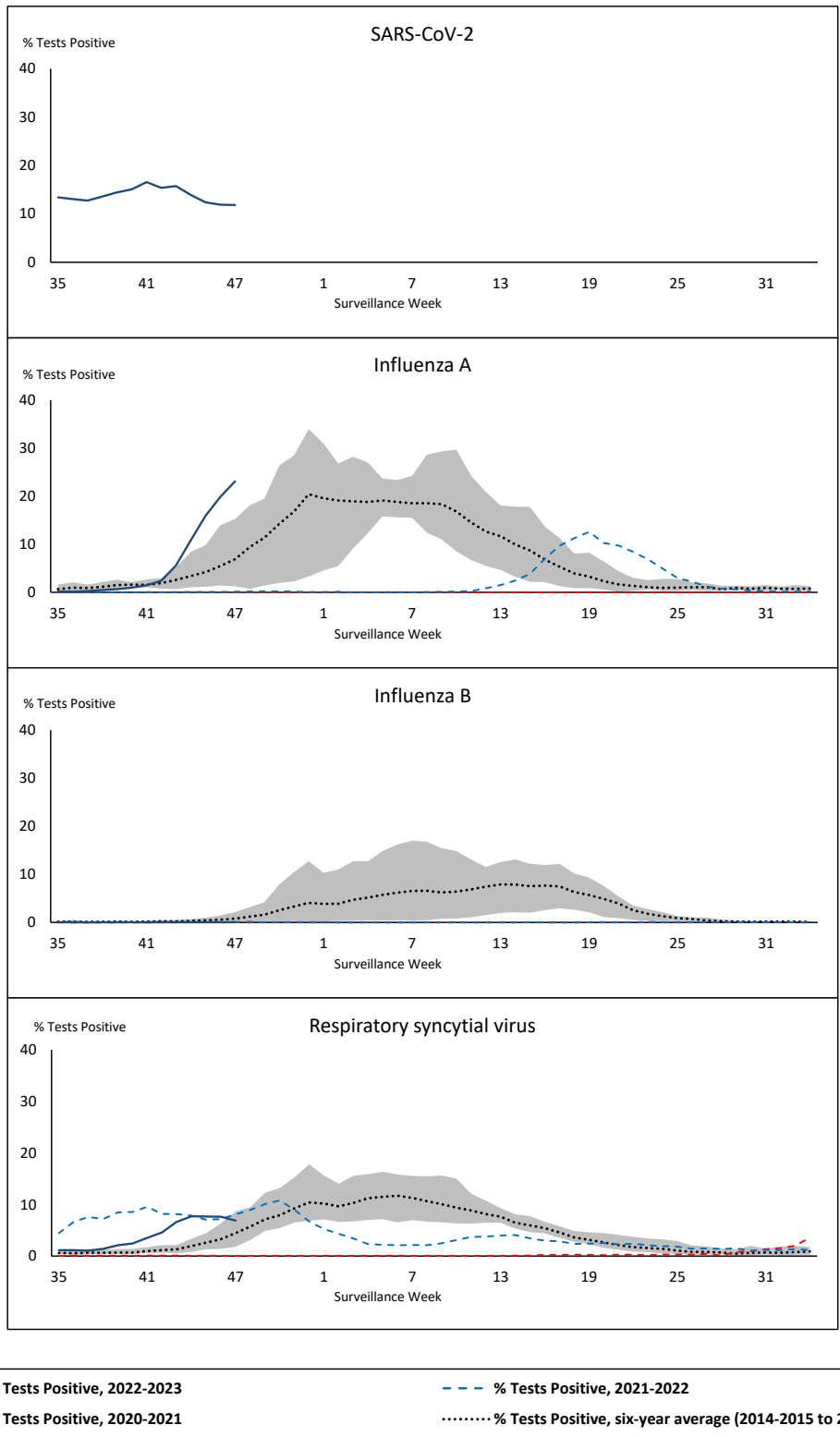


Public Health  
Agency of Canada

Agence de la santé  
publique du Canada

Canada

**Figure 1: Positive severe acute respiratory syndrome coronavirus 2 (SARS-CoV-2), influenza, and respiratory syncytial virus tests (%) reported by participating laboratories in Canada by surveillance week compared to average and range from 2014-2015 to 2019-2020 season**



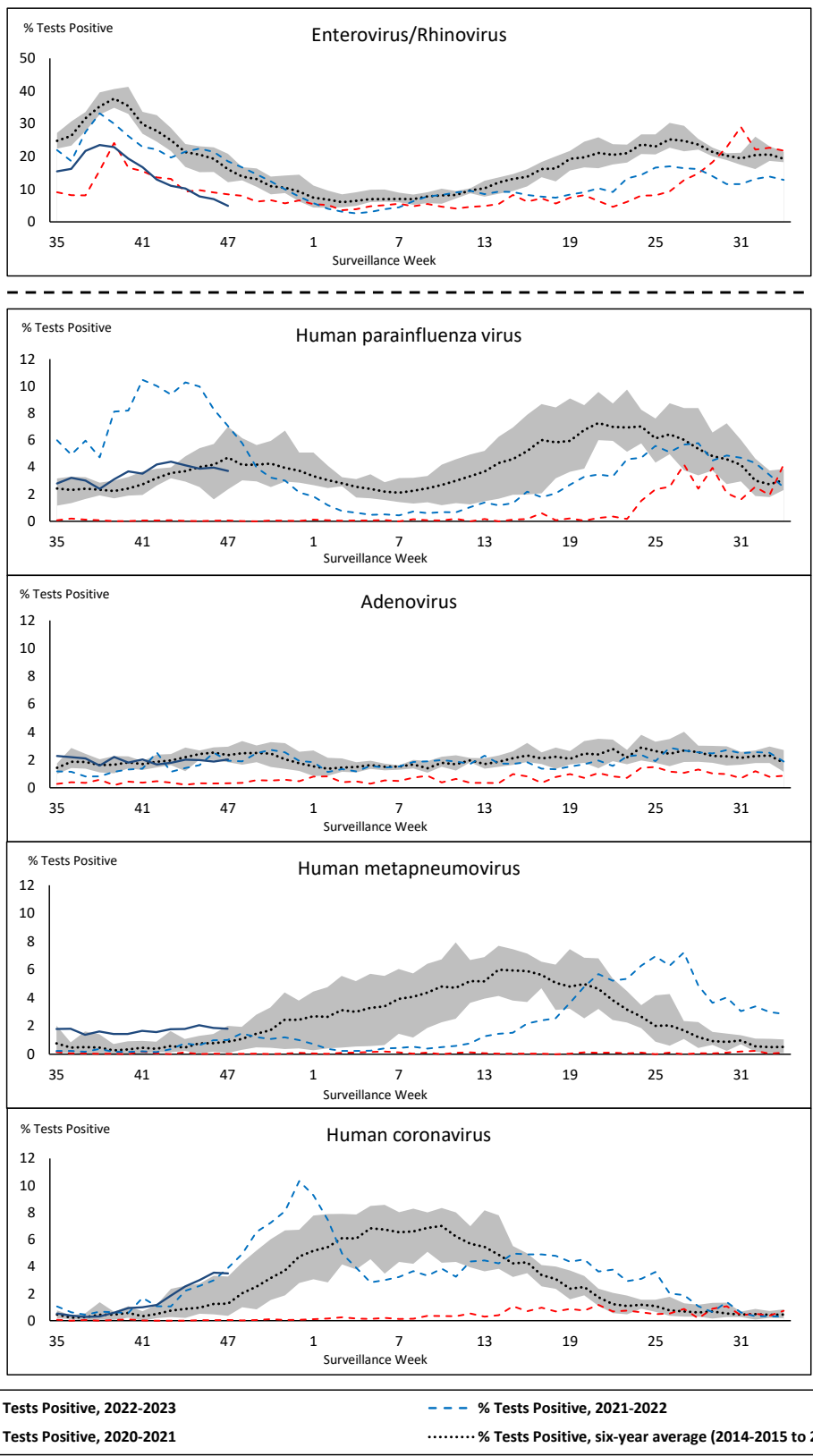
Shaded area represents the maximum and minimum % of respiratory virus tests positive reported by week from seasons 2014-2015 to 2019-2020

Note: Changes to testing practices during the COVID-19 pandemic may cause substantial changes to indicator estimates from previous years. Collection of laboratory testing practice meta-data to understand these changes is ongoing. Interpret trends with caution.

Note: SARS-CoV-2 surveillance was integrated into RVDSS at the beginning of the 2022-2023 season; no appropriate data is available for historical comparison.

Note: Data from week 11 of the 2019-2020 season onwards are excluded from the historical comparison due to the COVID-19 pandemic.

**Figure 2: Positive tests (%) of other respiratory viruses reported by participating laboratories in Canada by surveillance week compared to average and range from 2014-2015 to 2019-2020 season**



Shaded area represents the maximum and minimum % of respiratory virus tests positive reported by week from seasons 2014-2015 to 2019-2020

Note: Changes to testing practices during the COVID-19 pandemic may cause substantial changes to indicator estimates from previous years. Collection of laboratory testing practice meta-data to understand these changes is ongoing. Interpret trends with caution.

Note: Data from week 11 of the 2019-2020 season onwards are excluded from the historical comparison due to the COVID-19 pandemic.

Note: % Tests Positive scale changes across the dashed line

**Table 1: Respiratory virus detections for the week ending November 26, 2022 (surveillance week 2022-47)**

Reporting Laboratory	SARS-CoV-2 Tested	SARS-CoV-2 Positive	Flu Tested	A(H1)pdm09 Positive	A(H3) Positive	A(UN)S Positive	Total Flu A Positive	Total Flu B Positive	RSV Tested	RSV Positive	HPIV Tested	HPIV 1 Positive	HPIV 2 Positive	HPIV 3 Positive	HPIV 4 Positive	Other HPIV Positive	ADV Tested	ADV Positive	HMPV Tested	HMPV Positive	EV/RV Tested	EV/RV Positive	HCoV Tested	HCoV Positive	
Newfoundland	487	102	340	0	34	3	37	0	340	16	340	0	1	0	1	0	340	12	340	13	340	21	340	3	
Prince Edward Island	1184	264	111	0	21	18	39	0	111	5	69	2	2	5	0	0	69	1	69	1	69	11	69	3	
Nova Scotia	5021	584	2305	0	0	605	605	0	2305	159	31	0	1	2	0	0	31	1	31	0	31	4	31	0	
New Brunswick	4969	642	2384	0	24	539	563	0	1924	112	237	0	4	19	3	0	237	13	237	1	237	30	237	12	
<b>Atlantic</b>	<b>11661</b>	<b>1592</b>	<b>5140</b>	<b>0</b>	<b>79</b>	<b>1165</b>	<b>1244</b>	<b>0</b>	<b>4680</b>	<b>292</b>	<b>677</b>	<b>2</b>	<b>8</b>	<b>26</b>	<b>4</b>	<b>0</b>	<b>677</b>	<b>27</b>	<b>677</b>	<b>15</b>	<b>677</b>	<b>66</b>	<b>677</b>	<b>18</b>	
Région Nord-Est	2813	331	1349	0	0	115	115	0	519	75	49	1	0	9	0	0	49	0	49	4	N.C.	N.C.	49	0	
Québec-Chaudière-Appalaches	7749	591	886	0	0	135	135	2	894	146	306	2	0	5	0	0	319	25	306	25	N.C.	N.C.	306	23	
Centre-du-Québec	5735	694	1057	0	0	276	276	1	881	95	31	0	0	0	0	0	31	4	31	3	N.C.	N.C.	31	3	
Montréal-Laval	7340	1001	4018	0	1	964	965	1	2109	145	862	6	0	16	1	0	862	35	868	43	N.C.	N.C.	833	18	
Ouest du Québec	4577	619	937	0	0	329	329	0	770	70	35	0	0	3	1	0	34	11	35	2	N.C.	N.C.	35	3	
Montérégie	5346	616	974	0	0	277	277	2	973	82	4	0	0	0	0	0	4	0	4	2	N.C.	N.C.	4	1	
<b>Province of Québec</b>	<b>33560</b>	<b>3852</b>	<b>9221</b>	<b>0</b>	<b>1</b>	<b>2096</b>	<b>2097</b>	<b>6</b>	<b>6146</b>	<b>613</b>	<b>1287</b>	<b>9</b>	<b>0</b>	<b>33</b>	<b>2</b>	<b>0</b>	<b>1299</b>	<b>75</b>	<b>1293</b>	<b>79</b>	<b>N.C.</b>	<b>N.C.</b>	<b>1258</b>	<b>48</b>	
P.H.O.L. - Ottawa	625	133	150	2	9	6	17	0	150	12	134	0	0	0	0	4	134	0	134	0	134	8	134	5	
EOURLA	2779	228	749	0	0	223	223	0	749	104	37	0	0	0	4	0	37	3	37	0	37	4	37	7	
P.H.O.L. - Kingston	544	60	99	0	7	3	10	1	99	12	93	0	0	0	0	8	93	0	93	0	93	10	93	10	
UHN / Mount Sinai Hospital	2989	190	785	0	0	54	54	2	785	15	43	0	0	0	0	0	43	0	43	0	43	2	43	3	
P.H.O.L. - Toronto	1734	476	1045	4	333	34	140	0	1044	41	786	0	0	0	0	47	786	13	786	8	786	43	786	32	
Sick Kids Hospital - Toronto	N.R.	N.R.	N.R.	N.R.	N.R.	N.R.	N.R.	N.R.	N.R.	N.R.	N.R.	N.R.	N.R.	N.R.	N.R.	N.R.	N.R.	N.R.	N.R.	N.R.	N.R.	N.R.	N.R.	N.R.	
Shared Hospital Laboratory	2543	144	2543	0	162	127	289	0	2543	139	2194	0	0	0	0	19	2194	15	2208	6	2184	24	2207	55	
P.H.O.L. - Sault Ste. Marie	51	8	39	0	6	11	17	0	39	0	32	0	0	0	0	2	32	0	32	1	32	0	32	0	
P.H.O.L. - Timmins	278	16	76	0	12	22	34	0	76	2	76	0	0	0	0	12	76	0	76	0	76	2	76	1	
St. Joseph's - London	N.R.	N.R.	N.R.	N.R.	N.R.	N.R.	N.R.	N.R.	N.R.	N.R.	N.R.	N.R.	N.R.	N.R.	N.R.	N.R.	N.R.	N.R.	N.R.	N.R.	N.R.	N.R.	N.R.	N.R.	
P.H.O.L. - London	961	164	402	0	72	4	75	0	402	41	358	0	0	0	0	24	358	5	358	3	358	22	358	14	
P.H.O.L. - Orillia	15	9	106	0	28	4	32	0	106	12	106	0	0	0	0	6	106	3	106	1	106	8	106	4	
P.H.O.L. - Thunder Bay	162	57	44	0	11	0	11	0	44	2	36	0	0	0	0	0	36	0	36	1	36	1	36	1	
P.H.O.L. - Sudbury	52	14	45	0	4	5	9	0	45	1	32	0	0	0	0	4	32	1	32	0	32	0	32	0	
P.H.O.L. - Hamilton	554	131	327	0	46	8	54	0	327	50	255	0	0	0	0	11	255	2	255	2	255	7	255	20	
P.H.O.L. - Peterborough	90	10	31	0	9	0	9	0	31	2	31	0	0	0	0	1	31	0	31	0	31	1	31	0	
St. Joseph's - Hamilton	3011	370	1517	0	0	366	366	0	1517	136	1517	0	0	38	0	0	1517	11	1517	0	1517	52	0	0	
Sault Area Hospital	481	64	470	0	33	33	66	0	470	4	139	4	0	1	0	0	139	3	139	11	139	8	139	0	
<b>Province of Ontario</b>	<b>16869</b>	<b>2074</b>	<b>8428</b>	<b>6</b>	<b>732</b>	<b>900</b>	<b>1406</b>	<b>3</b>	<b>8427</b>	<b>573</b>	<b>5869</b>	<b>4</b>	<b>0</b>	<b>39</b>	<b>4</b>	<b>138</b>	<b>5869</b>	<b>56</b>	<b>5883</b>	<b>33</b>	<b>5859</b>	<b>192</b>	<b>4365</b>	<b>152</b>	
Manitoba	2842	400	1914	2	26	382	410	0	1914	43	175	0	0	12	1	0	175	10	211	7	175	19	211	9	
Saskatchewan	7187	489	1986	0	0	582	582	1	1573	42	637	1	3	20	0	0	637	13	637	23	637	34	631	24	
Alberta	10207	1441	4541	85	1058	294	1437	0	3478	242	1509	6	3	28	1	0	1508	15	1509	18	1496	48	1509	58	
<b>Prairies</b>	<b>20236</b>	<b>2330</b>	<b>8441</b>	<b>87</b>	<b>1084</b>	<b>1258</b>	<b>2429</b>	<b>1</b>	<b>6965</b>	<b>327</b>	<b>2321</b>	<b>7</b>	<b>6</b>	<b>60</b>	<b>2</b>	<b>0</b>	<b>2320</b>	<b>38</b>	<b>2357</b>	<b>48</b>	<b>2308</b>	<b>101</b>	<b>2351</b>	<b>91</b>	
<b>British Columbia</b>	<b>7230</b>	<b>760</b>	<b>4248</b>	<b>26</b>	<b>299</b>	<b>0</b>	<b>1026</b>	<b>6</b>	<b>4112</b>	<b>291</b>	<b>727</b>	<b>14</b>	<b>12</b>	<b>31</b>	<b>4</b>	<b>0</b>	<b>727</b>	<b>25</b>	<b>727</b>	<b>23</b>	<b>695</b>	<b>102</b>	<b>695</b>	<b>17</b>	
Yukon	167	5	11	0	1	5	6	0	11	0	N.C.	N.C.	N.C.	N.C.	N.C.	N.C.	N.C.	N.C.	N.C.	N.C.	N.C.	N.C.	N.C.	N.C.	
Northwest Territories	89	21	85	0	11	0	11	0	85	2	N.C.	N.C.	N.C.	N.C.	N.C.	N.C.	N.C.	N.C.	N.C.	N.C.	N.C.	85	10	N.C.	N.C.
Nunavut	101	5	55	0	7	0	7	0	55	1	N.C.	N.C.	N.C.	N.C.	N.C.	N.C.	N.C.	N.C.	N.C.	N.C.	N.C.	N.C.	N.C.	N.C.	
<b>Territories</b>	<b>357</b>	<b>31</b>	<b>151</b>	<b>0</b>	<b>19</b>	<b>5</b>	<b>24</b>	<b>0</b>	<b>151</b>	<b>3</b>	<b>N.C.</b>	<b>N.C.</b>	<b>N.C.</b>	<b>N.C.</b>	<b>N.C.</b>	<b>N.C.</b>	<b>N.C.</b>	<b>N.C.</b>	<b>N.C.</b>	<b>N.C.</b>	<b>85</b>	<b>10</b>	<b>N.C.</b>	<b>N.C.</b>	
<b>CANADA</b>	<b>89913</b>	<b>10639</b>	<b>35629</b>	<b>119</b>	<b>2214</b>	<b>5424</b>	<b>8226</b>	<b>16</b>	<b>30481</b>	<b>2099</b>	<b>10881</b>	<b>36</b>	<b>26</b>	<b>189</b>	<b>16</b>	<b>138</b>	<b>10892</b>	<b>221</b>	<b>10937</b>	<b>198</b>	<b>9624</b>	<b>471</b>	<b>9346</b>	<b>326</b>	

The data in the RVDSS report represent surveillance data available at the time of writing. Data missing from the current week are denoted by N.R. Data not collected by reporting lab denoted by N.C.

Non-SARS-CoV-2 specimens and select SARS-CoV-2 specimens from Yukon (YT) are sent to reference laboratories in British Columbia and reported results reflect specimens identified as originating from YT.

Results from British Columbia comprise of specimens from the following sites: Children's and Women's Hospital Laboratory, Fraser Health Medical Microbiology Laboratory, Island Health, Providence Health Care, Vancouver Coastal Health sites, Victoria General Hospital, BCCDC Public Health Laboratory, Interior Health Authority sites and Northern Health Authority sites.

Due to different testing protocols of laboratories across Canada, influenza A subtype detection counts may not be included in total influenza A detection counts. Total influenza A and B positive counts are used to calculate percentage of tests

Delays in the reporting of data may cause data to change retrospectively.

**Table 2: Cumulative respiratory virus detections from August 28, 2022 to November 26, 2022 (surveillance weeks 2022-35 to 2022-47)**

Reporting Laboratory	SARS-CoV-2 Tested	SARS-CoV-2 Positive	Flu Tested	A(H1)pdm09 Positive	A(H3) Positive	A(UnS) Positive	Total Flu A Positive	Total Flu B Positive	RSV Tested	RSV Positive	HPIV Tested	HPIV 1 Positive	HPIV 2 Positive	HPIV 3 Positive	HPIV 4 Positive	Other HPIV Positive	ADV Tested	ADV Positive	HMPV Tested	HMPV Positive	EV/RV Tested	EV/RV Positive	HCoV Tested	HCoV Positive	
Newfoundland	6705	1665	2744	0	52	3	55	0	2744	113	2744	2	10	16	6	0	2744	58	2744	95	2744	358	2744	9	
Prince Edward Island	17083	4561	705	0	68	21	89	0	705	14	661	12	20	44	2	0	661	39	661	10	661	265	661	8	
Nova Scotia	62080	12925	7651	0	3	1003	1006	1	7650	540	586	4	7	11	1	0	586	23	586	0	586	142	586	4	
New Brunswick	45276	7095	8559	0	49	967	1016	2	5651	192	934	1	15	59	7	0	934	71	934	2	934	243	879	31	
<b>Atlantic</b>	<b>131144</b>	<b>26246</b>	<b>19659</b>	<b>0</b>	<b>172</b>	<b>1994</b>	<b>2166</b>	<b>3</b>	<b>16750</b>	<b>859</b>	<b>4925</b>	<b>19</b>	<b>52</b>	<b>130</b>	<b>16</b>	<b>0</b>	<b>4925</b>	<b>191</b>	<b>4925</b>	<b>107</b>	<b>4925</b>	<b>1008</b>	<b>4870</b>	<b>52</b>	
Région Nord-Est	32783	4527	12150	0	0	158	158	3	2729	271	347	4	2	28	0	0	347	12	347	13	N.C.	N.C.	347	6	
Québec-Chaudière-Appalaches	81232	7628	5071	0	0	208	208	3	5091	851	2232	19	4	27	0	0	2397	147	2232	123	N.C.	N.C.	2232	69	
Centre-du-Québec	64352	8852	4390	0	0	414	414	2	4134	515	340	12	0	14	0	0	340	23	340	40	N.C.	N.C.	340	6	
Montréal-Laval	99804	12664	20744	0	6	1863	1869	9	15170	1493	7751	95	12	134	6	0	7760	262	7832	457	N.C.	N.C.	7519	83	
Ouest du Québec	48763	6800	4057	0	3	549	552	1	3448	484	530	16	0	41	1	0	529	94	530	24	N.C.	N.C.	530	19	
Montérégie	67071	7483	6117	0	0	562	562	6	6050	631	53	0	0	1	0	0	53	0	53	2	N.C.	N.C.	53	1	
<b>Province of Québec</b>	<b>394005</b>	<b>47954</b>	<b>52529</b>	<b>0</b>	<b>9</b>	<b>3754</b>	<b>3763</b>	<b>24</b>	<b>36622</b>	<b>4245</b>	<b>11253</b>	<b>146</b>	<b>18</b>	<b>245</b>	<b>7</b>	<b>0</b>	<b>11426</b>	<b>538</b>	<b>11334</b>	<b>659</b>	<b>N.C.</b>	<b>N.C.</b>	<b>11021</b>	<b>184</b>	
P.H.O.L. - Ottawa	15264	3764	983	2	32	7	41	0	983	30	967	0	0	0	0	26	967	1	967	10	967	92	967	13	
EOURLA	42801	4965	4812	0	0	519	519	2	4812	556	525	6	3	13	10	0	525	22	525	13	525	156	525	23	
P.H.O.L. - Kingston	16471	2722	822	0	41	7	48	1	822	52	782	0	0	0	0	36	782	15	782	6	782	121	782	23	
UHN / Mount Sinai Hospital	44106	3330	6866	0	10	197	207	9	6866	61	301	0	0	1	0	0	268	1	301	0	301	12	301	21	
P.H.O.L. - Toronto	29589	5600	6943	31	1221	52	480	0	6926	171	6537	0	0	0	0	319	6539	99	6536	58	6537	675	6536	135	
Sick Kids Hospital - Toronto	0	0	0	0	0	0	0	0	0	0	0	0	0	0	0	0	0	0	0	0	0	0	0	0	
Shared Hospital Laboratory	35027	2327	35028	12	858	459	1329	2	35029	932	13248	4	0	16	0	187	13261	91	13297	29	13244	395	13143	185	
P.H.O.L. - Sault Ste. Marie	1049	228	148	0	10	14	24	0	148	0	136	0	0	0	0	3	136	0	136	1	136	8	136	1	
P.H.O.L. - Timmins	4982	596	289	0	36	24	59	0	288	3	288	0	0	0	0	32	288	2	288	6	288	36	288	11	
St. Joseph's - London	58389	8185	2334	0	0	177	177	3	2334	219	628	0	0	0	0	20	662	19	662	0	662	134	251	15	
P.H.O.L. - London	18418	3939	2458	5	310	15	322	1	2458	178	2397	0	0	0	0	144	2397	38	2397	9	2397	252	2397	50	
P.H.O.L. - Orillia	247	137	911	4	193	8	205	0	911	62	911	0	0	0	0	60	911	17	911	9	911	148	911	27	
P.H.O.L. - Thunder Bay	5003	988	335	0	80	1	81	0	334	6	300	0	0	0	0	1	300	5	300	1	300	36	300	5	
P.H.O.L. - Sudbury	1138	144	172	0	5	8	13	0	172	3	148	0	0	0	0	7	148	3	148	1	148	13	148	5	
P.H.O.L. - Hamilton	13533	3195	1879	0	186	17	203	3	1876	196	1721	0	0	0	0	69	1721	21	1721	12	1721	173	1721	50	
P.H.O.L. - Peterborough	2184	412	415	0	46	0	46	0	415	23	415	0	0	0	0	17	415	5	415	2	415	84	415	10	
St. Joseph's - Hamilton	40082	6503	13516	0	0	1575	1575	6	13516	853	13516	0	0	411	0	0	13516	105	13516	41	13516	1252	0	0	
Sault Area Hospital	6375	1274	3198	0	93	54	147	0	3198	18	1065	18	0	8	0	0	1065	25	1065	47	1065	156	1065	6	
<b>Province of Ontario</b>	<b>334658</b>	<b>48309</b>	<b>81109</b>	<b>54</b>	<b>3121</b>	<b>3134</b>	<b>5476</b>	<b>27</b>	<b>81088</b>	<b>3363</b>	<b>43885</b>	<b>28</b>	<b>3</b>	<b>449</b>	<b>10</b>	<b>921</b>	<b>43901</b>	<b>469</b>	<b>43967</b>	<b>245</b>	<b>43915</b>	<b>3743</b>	<b>29886</b>	<b>580</b>	
Manitoba	30342	6880	9802	11	81	603	695	0	9802	243	1995	1	2	70	5	0	1995	74	2244	86	1995	447	2244	25	
Saskatchewan	78805	7613	11259	0	0	2017	2017	4	9406	135	4196	10	25	190	8	0	4198	111	4200	192	4198	545	4195	111	
Alberta	106745	18491	36338	246	4550	793	5589	12	30421	942	14779	85	46	273	18	0	14776	182	14762	121	14503	1848	14779	491	
<b>Prairies</b>	<b>215892</b>	<b>32984</b>	<b>57399</b>	<b>257</b>	<b>4631</b>	<b>3413</b>	<b>8301</b>	<b>16</b>	<b>49629</b>	<b>1320</b>	<b>20970</b>	<b>96</b>	<b>73</b>	<b>533</b>	<b>31</b>	<b>0</b>	<b>20969</b>	<b>367</b>	<b>21206</b>	<b>399</b>	<b>20696</b>	<b>2840</b>	<b>21218</b>	<b>627</b>	
<b>British Columbia</b>	<b>123447</b>	<b>11020</b>	<b>37320</b>	<b>142</b>	<b>1675</b>	<b>12</b>	<b>3287</b>	<b>18</b>	<b>34667</b>	<b>1013</b>	<b>8422</b>	<b>96</b>	<b>105</b>	<b>303</b>	<b>41</b>	<b>6</b>	<b>8422</b>	<b>178</b>	<b>8422</b>	<b>153</b>	<b>8165</b>	<b>1855</b>	<b>8165</b>	<b>71</b>	
Yukon	2877	211	109	0	5	5	10	0	106	1	N.C.	N.C.	N.C.	N.C.	N.C.	N.C.	N.C.	N.C.	N.C.	N.C.	N.C.	N.C.	N.C.	N.C.	
Northwest Territories	612	86	584	0	18	0	18	0	584	24	N.C.	N.C.	N.C.	N.C.	N.C.	N.C.	N.C.	N.C.	N.C.	N.C.	N.C.	584	187	N.C.	N.C.
Nunavut	2076	178	1075	3	180	2	185	0	1075	22	N.C.	N.C.	N.C.	N.C.	N.C.	N.C.	N.C.	N.C.	N.C.	N.C.	N.C.	N.C.	N.C.	N.C.	N.C.
<b>Territories</b>	<b>5565</b>	<b>475</b>	<b>1768</b>	<b>3</b>	<b>203</b>	<b>7</b>	<b>213</b>	<b>0</b>	<b>1765</b>	<b>47</b>	<b>N.C.</b>	<b>N.C.</b>	<b>N.C.</b>	<b>N.C.</b>	<b>N.C.</b>	<b>N.C.</b>	<b>N.C.</b>	<b>N.C.</b>	<b>N.C.</b>	<b>N.C.</b>	<b>584</b>	<b>187</b>	<b>N.C.</b>	<b>N.C.</b>	
<b>CANADA</b>	<b>1204711</b>	<b>166988</b>	<b>249784</b>	<b>456</b>	<b>9811</b>	<b>12314</b>	<b>23206</b>	<b>88</b>	<b>220521</b>	<b>10847</b>	<b>89455</b>	<b>385</b>	<b>251</b>	<b>1660</b>	<b>105</b>	<b>927</b>	<b>89643</b>	<b>1743</b>	<b>89854</b>	<b>1563</b>	<b>78285</b>	<b>9633</b>	<b>75160</b>	<b>1514</b>	

The data in the RVDSS report represent surveillance data available at the time of writing. Data not collected by reporting lab denoted by N.C.

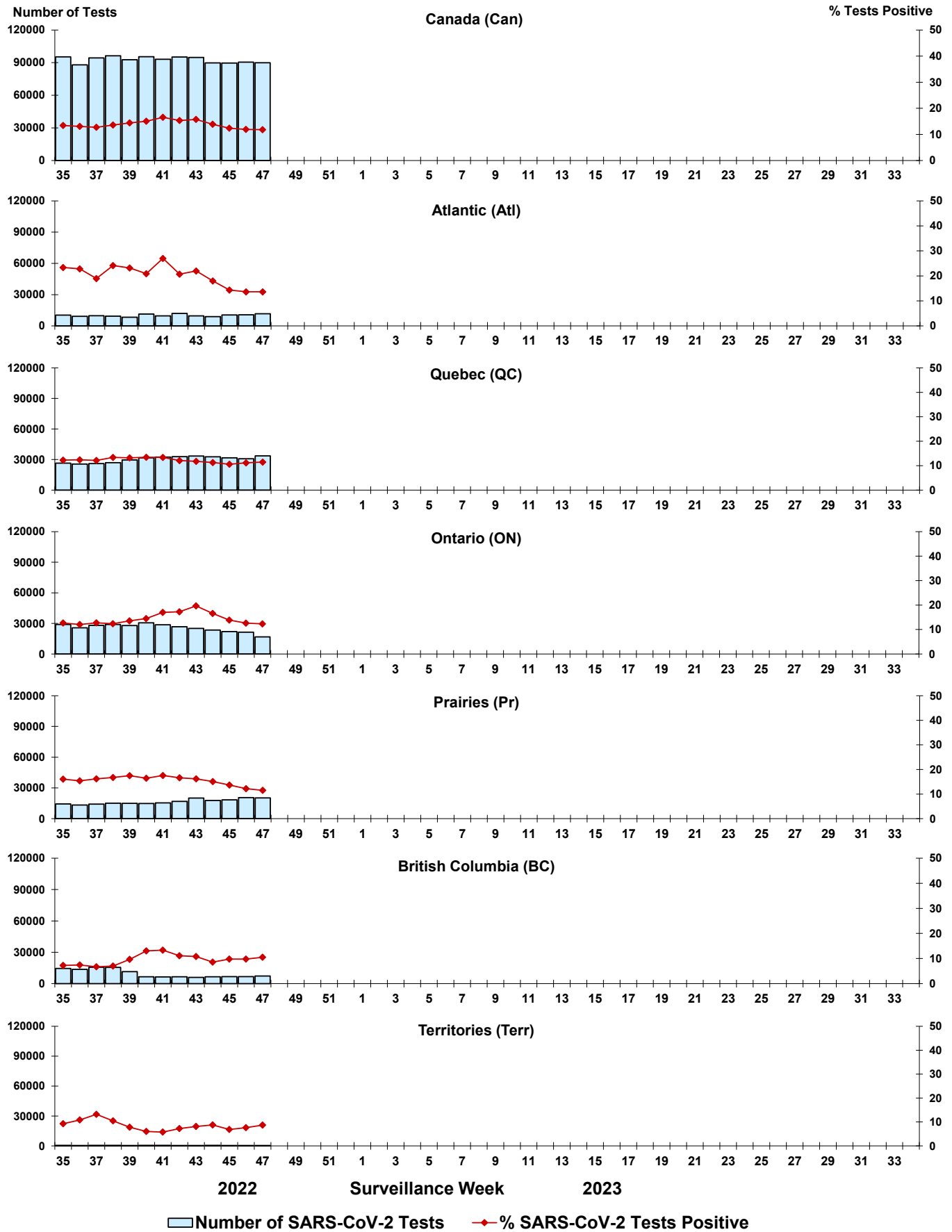
Non-SARS-CoV-2 specimens and select SARS-CoV-2 specimens from Yukon (YT) are sent to reference laboratories in British Columbia and reported results reflect specimens identified as originating from YT.

Results from British Columbia comprise of specimens from the following sites: Children's and Women's Hospital Laboratory, Fraser Health Medical Microbiology Laboratory, Island Health, Providence Health Care, Vancouver Coastal Health sites, Victoria General Hospital, BCCDC Public Health Laboratory, Interior Health Authority sites and Northern Health Authority sites.

Due to different testing protocols of laboratories across Canada, influenza A subtype detection counts may not be included in total influenza A detection counts. Total influenza A and B positive counts are used to calculate percentage of tests

Delays in the reporting of data may cause data to change retrospectively. Due to these delays, the sum of weekly report totals do not add up to cumulative totals.

**Figure 3: Positive severe acute respiratory syndrome coronavirus 2 (SARS-CoV-2) tests (%) in Canada by region by surveillance week**



Note: Differences in positivity between jurisdictions can reflect differences in testing practices. Please interpret with caution.

Figure 4: Positive Influenza (Flu) tests (%) in Canada by region by surveillance week

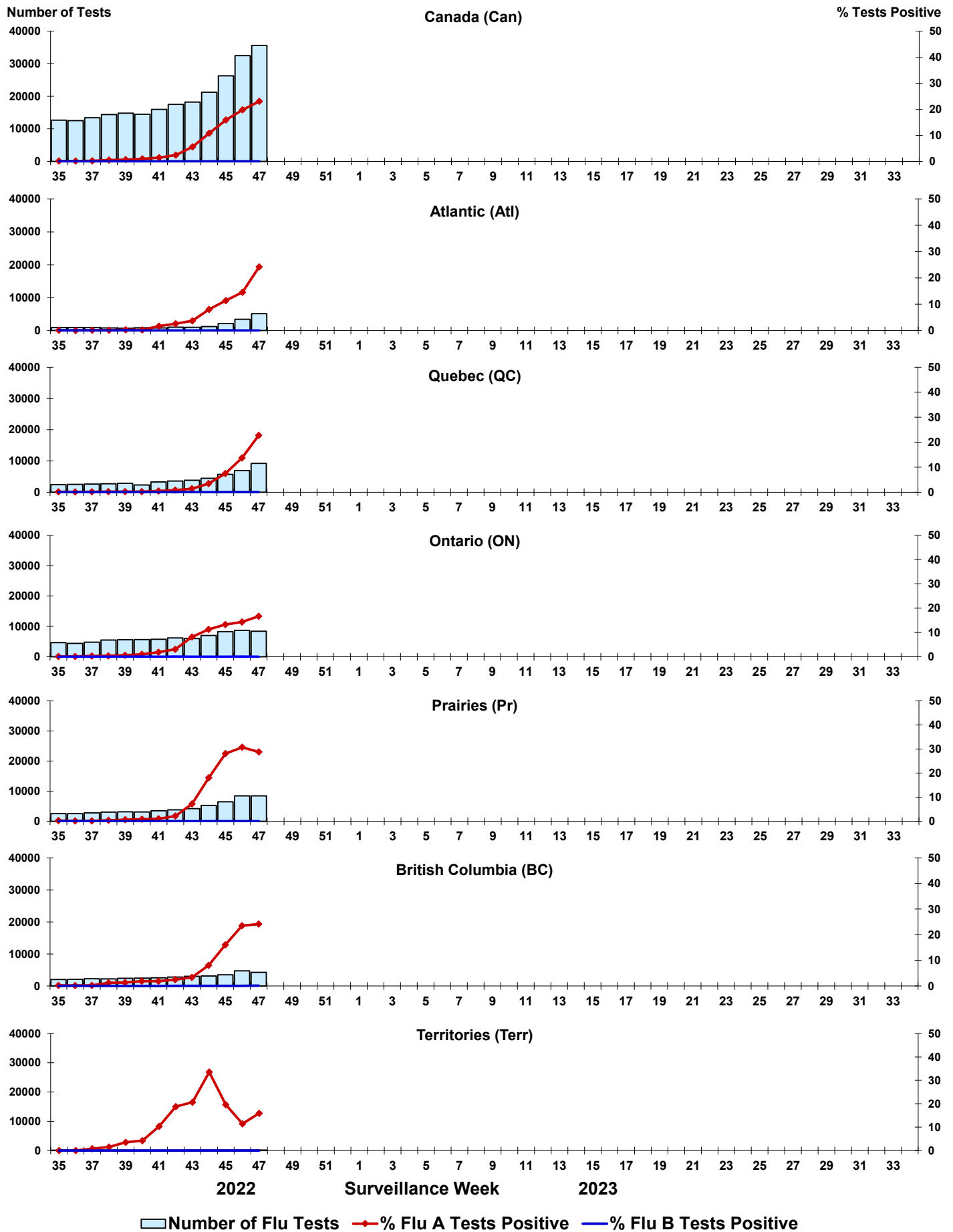


Figure 5: Positive Respiratory syncytial virus (RSV) tests (%) in Canada by region by surveillance week

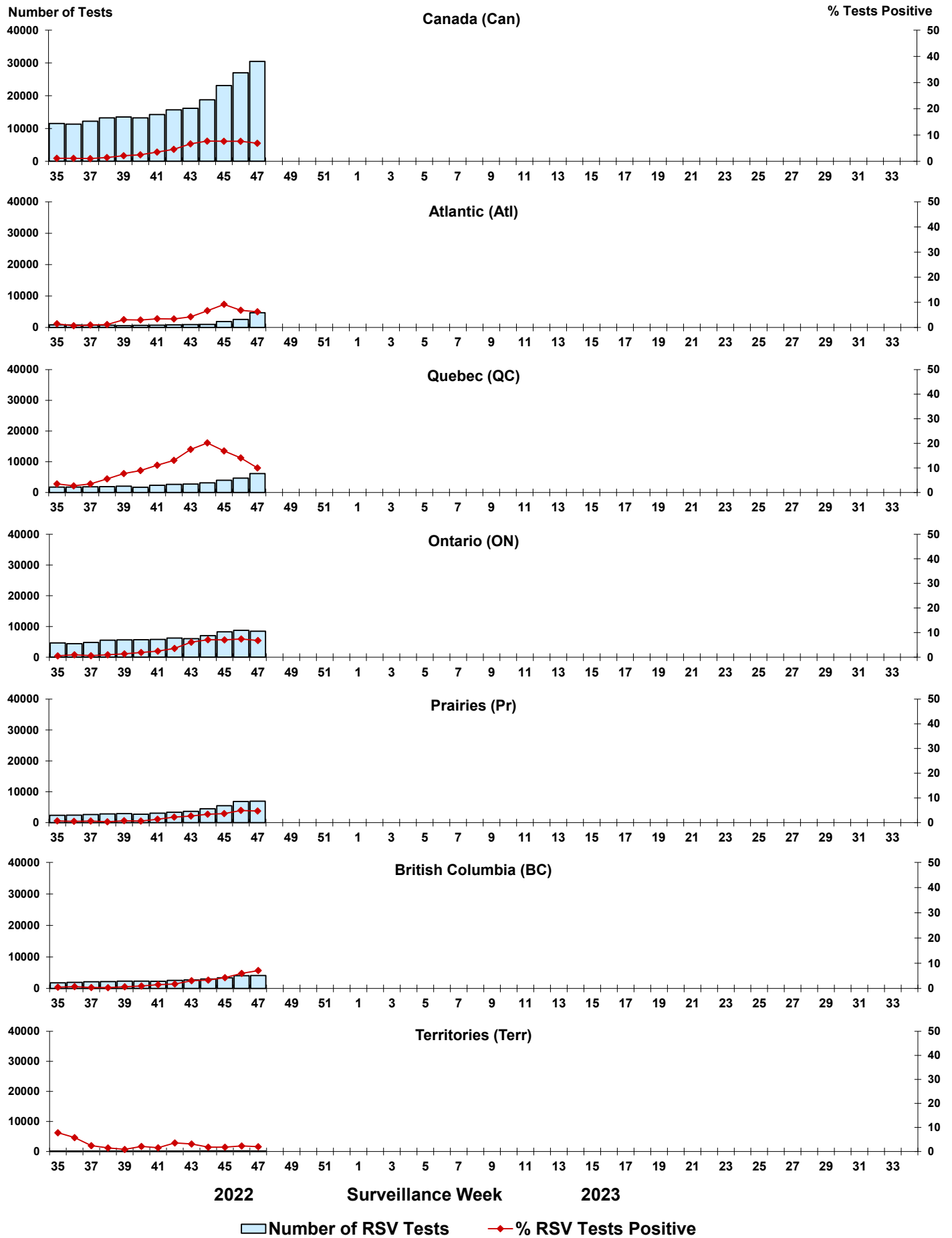




Figure 6: Positive Human parainfluenza virus (HPIV) tests (%) in Canada by region by surveillance week

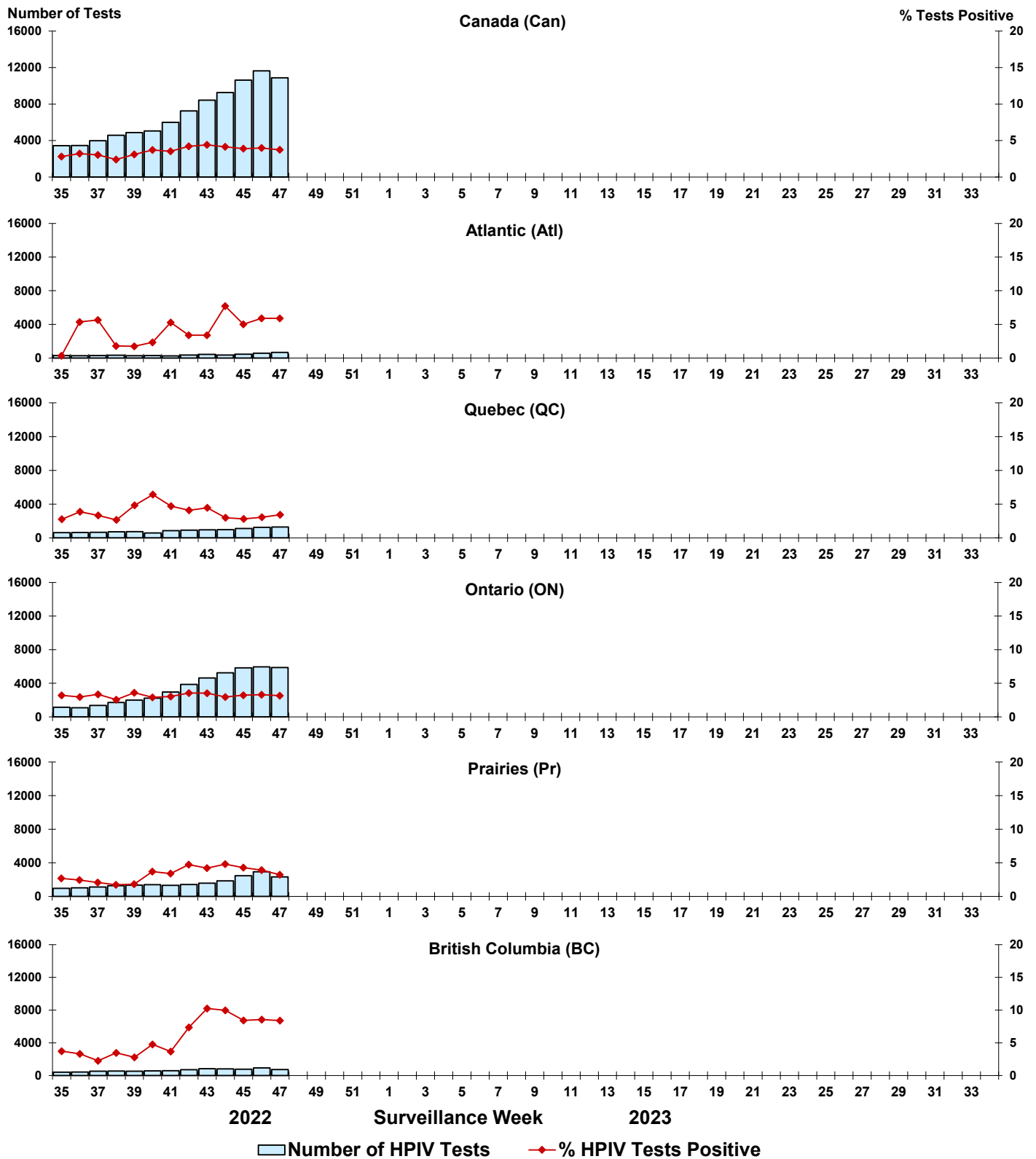


Figure 7: Positive Adenovirus (ADV) tests (%) in Canada by region by surveillance week

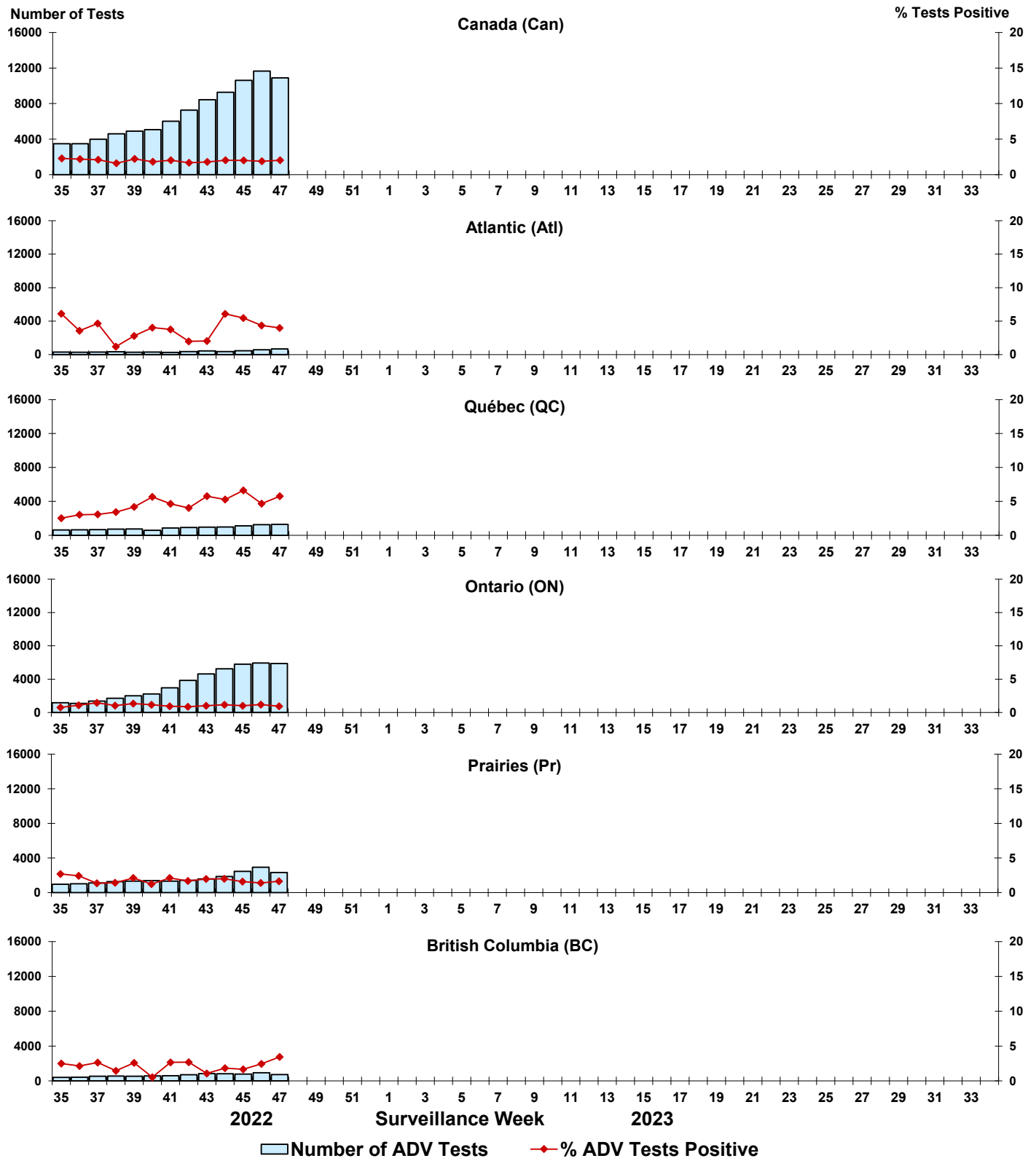


Figure 8: Positive Human metapneumovirus (HMPV) tests (%) in Canada by region by surveillance week

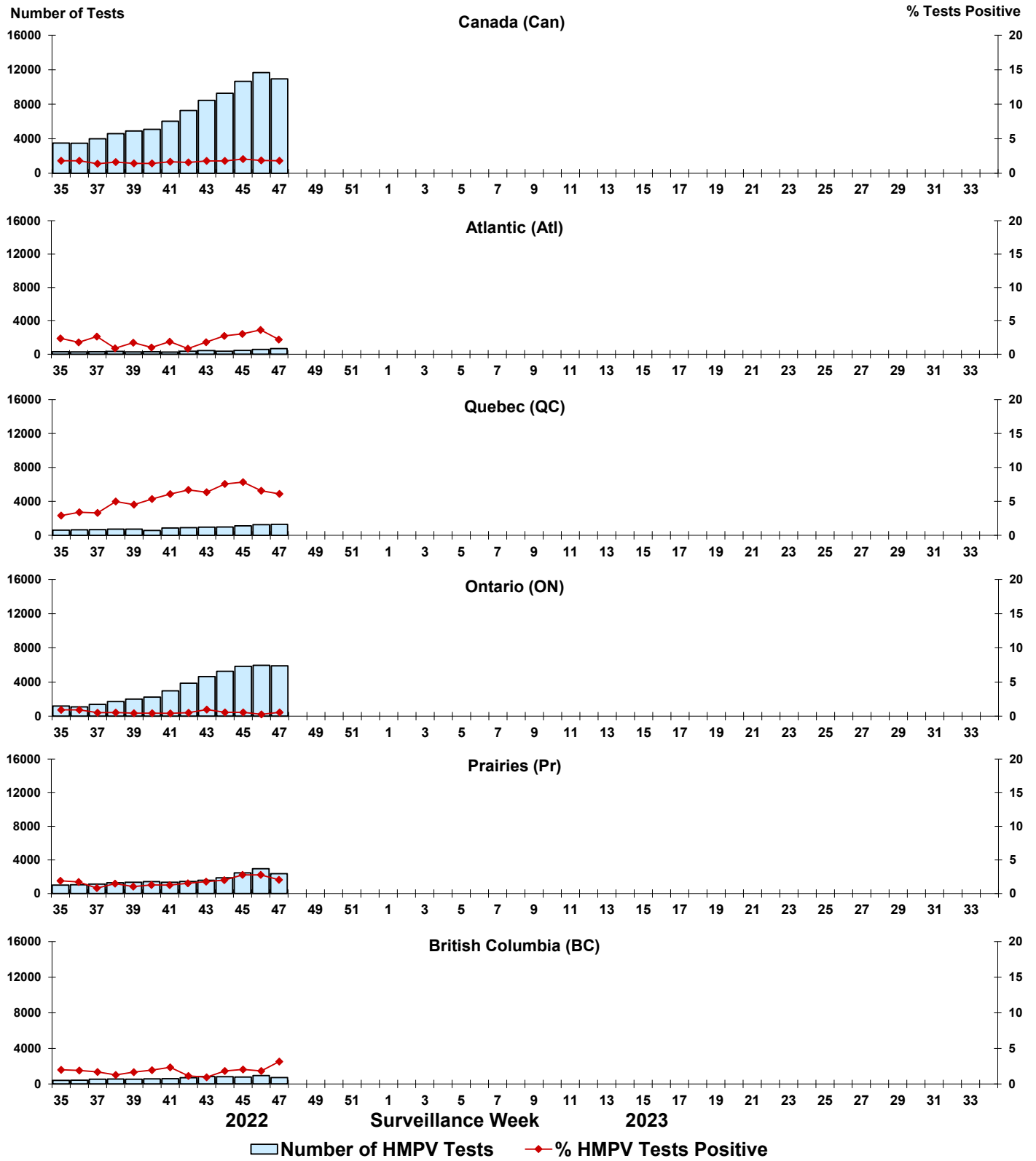


Figure 9: Positive Enterovirus/Rhinovirus (EV/RV) tests (%) in Canada by region by surveillance week

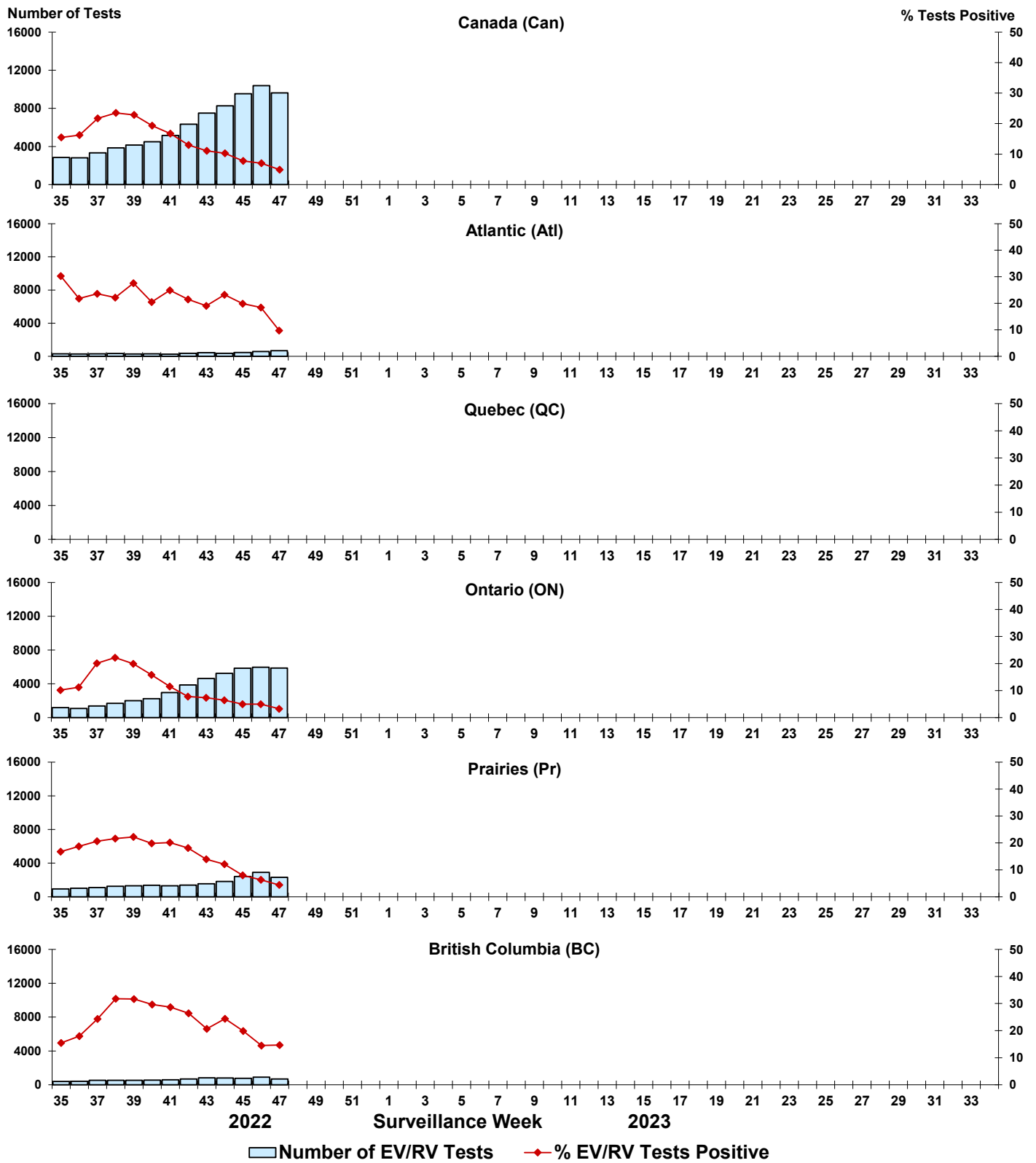


Figure 10: Positive Human coronavirus (HCoV) tests (%) in Canada by region by surveillance week

